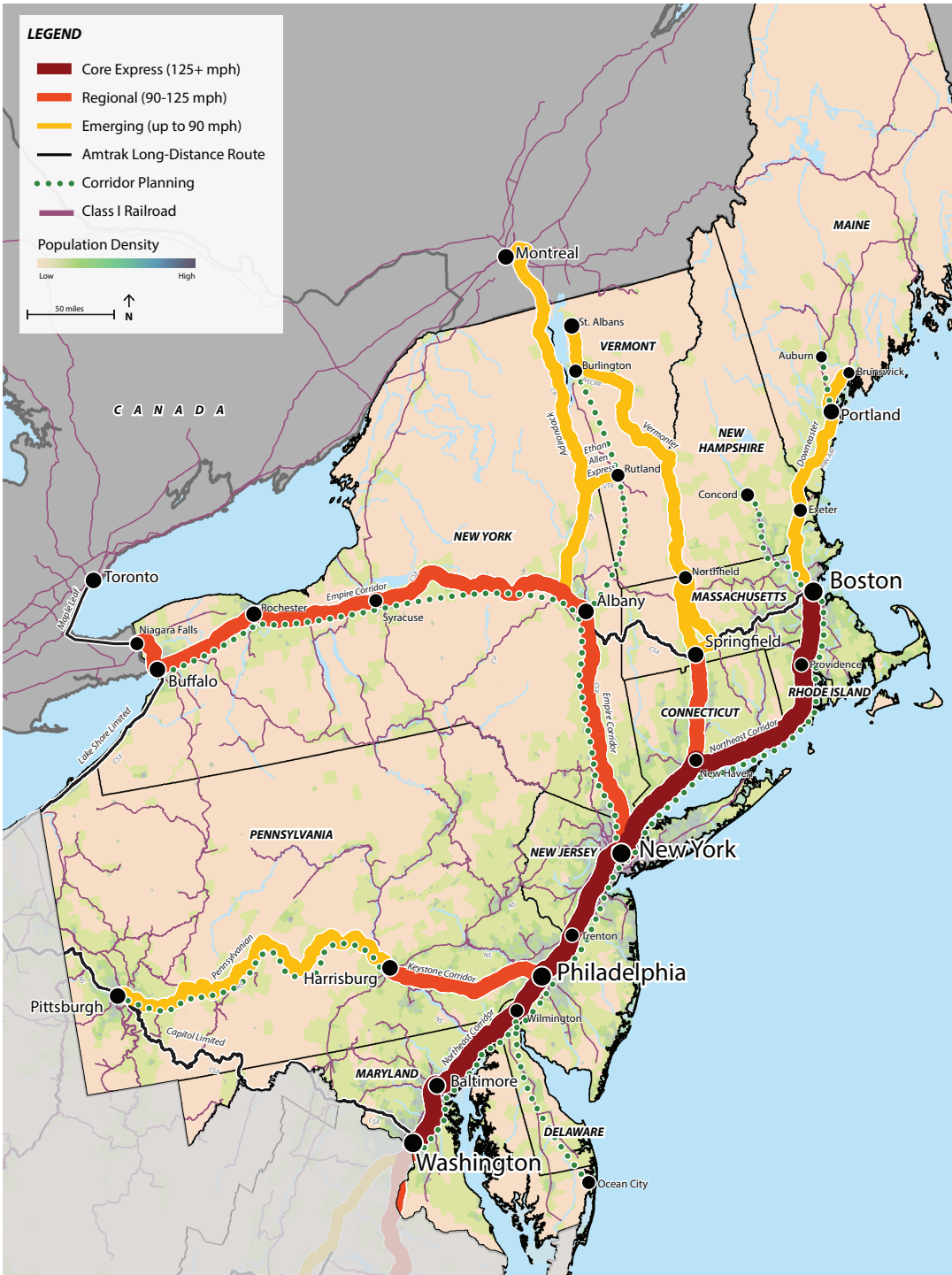


America's Rail Network: *Northeast Region*



The Northeast region is home to the nation's busiest rail routes, many of which have seen regular passenger service for over 150 years. Today, multistate planning efforts will prepare the region for continued ridership growth into the next century.

Comprehensive Northeast Corridor (NEC) planning for the first time since 1978:

The NEC FUTURE program will result in a Passenger Rail Corridor Investment Plan (PRCIP), establishing a roadmap for future investment on the Corridor. NEC FUTURE consists of two coordinated documents: 1) a Service Development Plan (SDP) that defines the vision for the NEC rail network in 2040, as well as the investments needed and the economic impacts/benefits of implementing the vision; and 2) a Tier 1 Environmental Impact Statement (EIS), required under the National Environmental Policy Act (NEPA), that will evaluate broad environmental benefits and consequences of implementing the SDP and be used as the vehicle for permitting the future improvements on the Corridor.

Enhanced connection to Vermont: The FRA investment of \$52.7 million in HSIPR Recovery Act funds, coupled with \$5 million in private investment from New England Central Railroad, allowed the State of Vermont to improve track, roadbed, grade crossings, and bridges along 190 miles of the route in Vermont. The project has resulted in nearly 30 minutes in travel time savings, along with increased speeds, greater reliability, and the potential for additional train frequencies in the future. Also, the strengthening and repair of bridges along this route has improved safety and freight capacity.

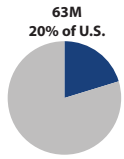
Expanded service in Maine: FRA provided \$38.4 million in HSIPR Recovery Act funds to improve the condition of track, roadbed, grade crossings, signals, and bridges on the Pan Am Railways line between Portland and Brunswick, ME to allow for an extension of the Amtrak Downeaster service – providing passenger service to Freeport and Brunswick for the first time since 1959. About 30 miles of new rail, 34,000 new rail ties, over 25 rehabilitated bridges and culverts, and 37 upgraded at-grade crossings will increase safety and reliability, while laying the foundation for additional frequencies in the future.



Northeast Region

Region Characteristics

Population

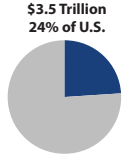


Global Rank
(comparable to)

22

(United Kingdom)

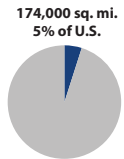
Economy



5

(Germany)

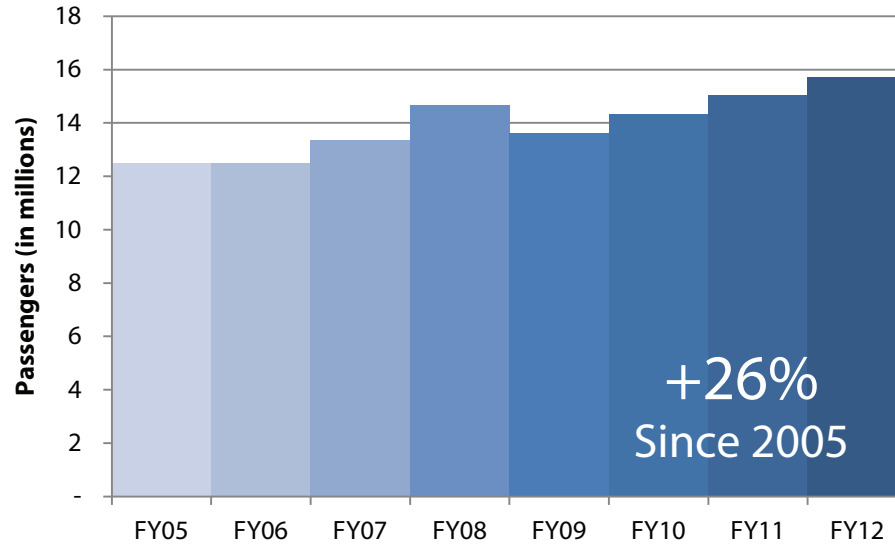
Land Area



56

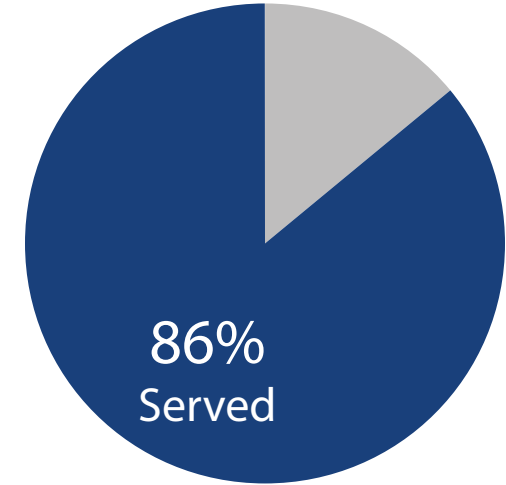
(Sweden)

Ridership Growth



Population Served

Population within 30 miles of a passenger station that receives at least one daily intercity train.



Corridor Details

Corridor	Distance (miles)	Federal Investments (\$M, 2008-2012)					Investment Description	Service Improvements			
		HSIPR	TIGER	RRIF	Other	Total		More Trains/ New Service	Faster Travel	Better Reliability	Improved Stations/ Equipment
Northeast Corridor (DC - NYC - Boston)	457	\$954	\$23	\$563	\$47	\$1,587	Track upgrades to allow top speeds of 160mph; replacement and enlargement of locomotive fleet; station upgrades; new bridges; planning work for alleviating bottlenecks; capacity improvements.		✓	✓	✓
Albany - Rutland	100	\$1	-	-	-	\$1	Study of new alignments between eastern NY and southwestern VT.	<i>planning</i>			
Boston - Portland - Brunswick	138	\$60	\$10	-	\$1	\$71	Extension of service north of Portland to Freeport and Brunswick, ME; improvements to provide a safer and more reliable service.	✓		✓	✓
New Haven - Hartford - Springfield - St. Albans	314	\$316	\$18	-	-	\$334	Track upgrades to allow for 90mph service; additional daily service in Connecticut; improvements to reduce travel time in Vermont.	✓	✓	✓	✓
New York City - Albany - Buffalo - Niagara Falls	460	\$187	\$32	-	\$1	\$219	Improvements to stations, signal systems, and capacity; improved reliability and decreased trip times.		✓	✓	✓
New York City - Albany - Montreal	381	\$3	-	-	-	\$3	Elimination of a key bottleneck affecting two intercity services.			✓	
Philadelphia - Harrisburg - Pittsburgh	353	\$66	-	-	-	\$66	Track and grade crossing improvements, reducing trip times and improving safety; study of improved passenger service to Pittsburgh.		✓	✓	
Multiple Northeastern Corridors	<i>n/a</i>	\$30	\$83	-	-	\$113	Work to begin expansion of New York Penn/Moynihan Station.				✓
Other Corridors / Freight Investments	<i>n/a</i>	\$3	-	\$34	\$16	\$53	Improvements to freight corridors/facilities throughout the region.	<i>varies</i>			
TOTAL		\$1,620	\$165	\$597	\$65	\$2,447					