



Southeast Region

Metropolitan areas in the Southeast are among the fastest growing in the nation and the states have recognized the need to invest.



Two Additional Trains Per Day
between Charlotte and Raleigh

North Carolina has committed to increase capacity and improve service quality and reliability for the three corridor trains that operate daily, and support additional corridor trains.



Improved Reliability
and congestion mitigation in North Carolina

Four new track crossovers between Petersburg, VA and Raleigh, NC will improve reliability and service quality, strengthening connections between the Northeast Corridor and routes serving the Southeast.

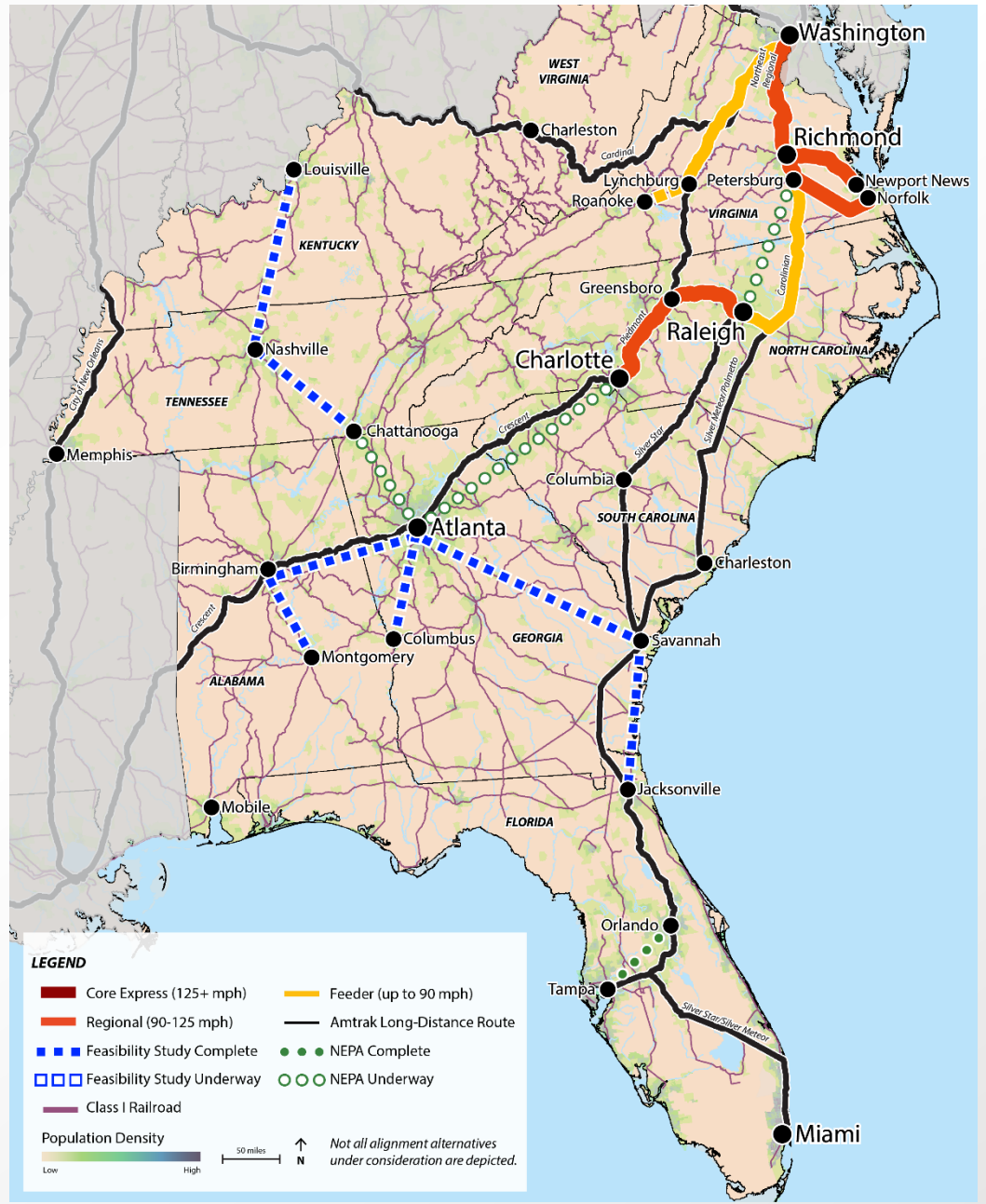


Planning and Feasibility Studies
currently underway for several corridors

Planning is underway to expand service on the Atlanta-Charlotte Corridor, building upon a 2008 feasibility study. Studies are also underway in Georgia, Alabama, and Tennessee, to extend rail service to more communities.

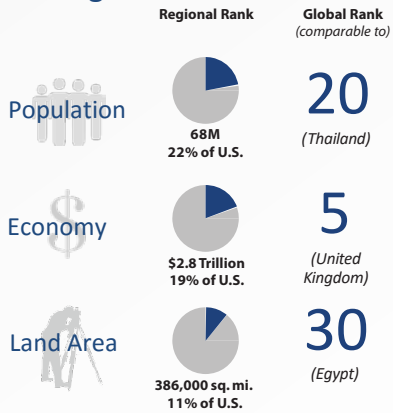


90% Ridership Increase
in the region since 2005

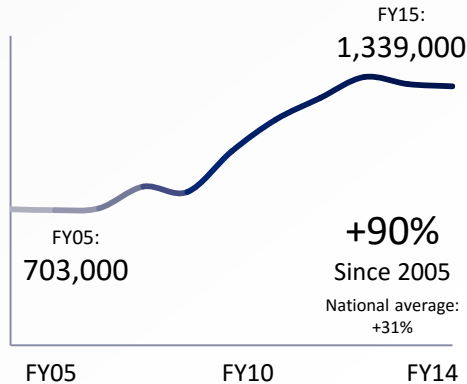


Southeast Region

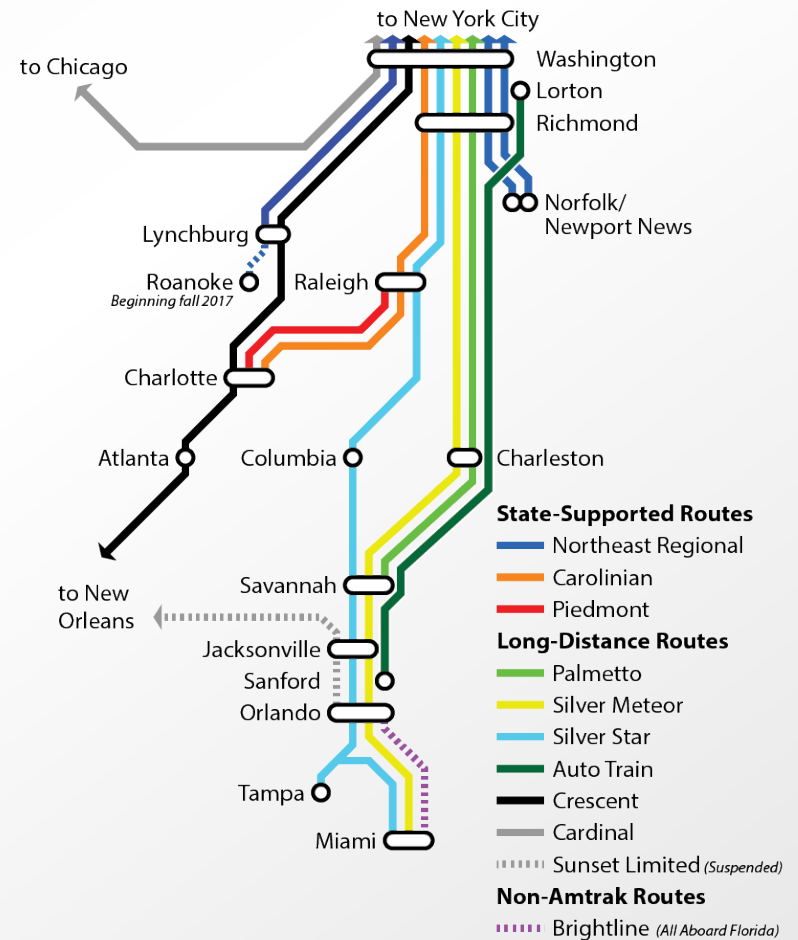
Region Characteristics



Ridership Growth



Route Diagram



Funding by Corridor and Source

Corridor		Length (miles)	Investments \$M 2009-2015		
			Federal	Non-Federal	Total
Southeast High-Speed Rail Corridor (SEHSR)	Washington DC - Raleigh	306	\$155	\$15	\$170
	Raleigh - Charlotte	173	\$606	\$65	\$671
	Charlotte - Atlanta	258	\$4	\$1	\$5
Tampa - Orlando - Miami		364	\$32	\$ -	\$32
Other Corridors / Freight Investments		NA	\$30	\$43	\$73
State Rail Plans		NA	\$1	\$1	\$1
TOTAL			\$828	\$126	\$954

Includes HSIPR and TIGER investments. Totals may not add exactly due to rounding.

SOURCES: Population: U.S. Census Bureau, 2010. Economy: U.S. Bureau of Economic Analysis, 2010. International Statistics: CIA World Factbook, 2012. Ridership: Amtrak, 2015. All Other Information: Federal Railroad Administration, 2016. Last revised October 3, 2016.