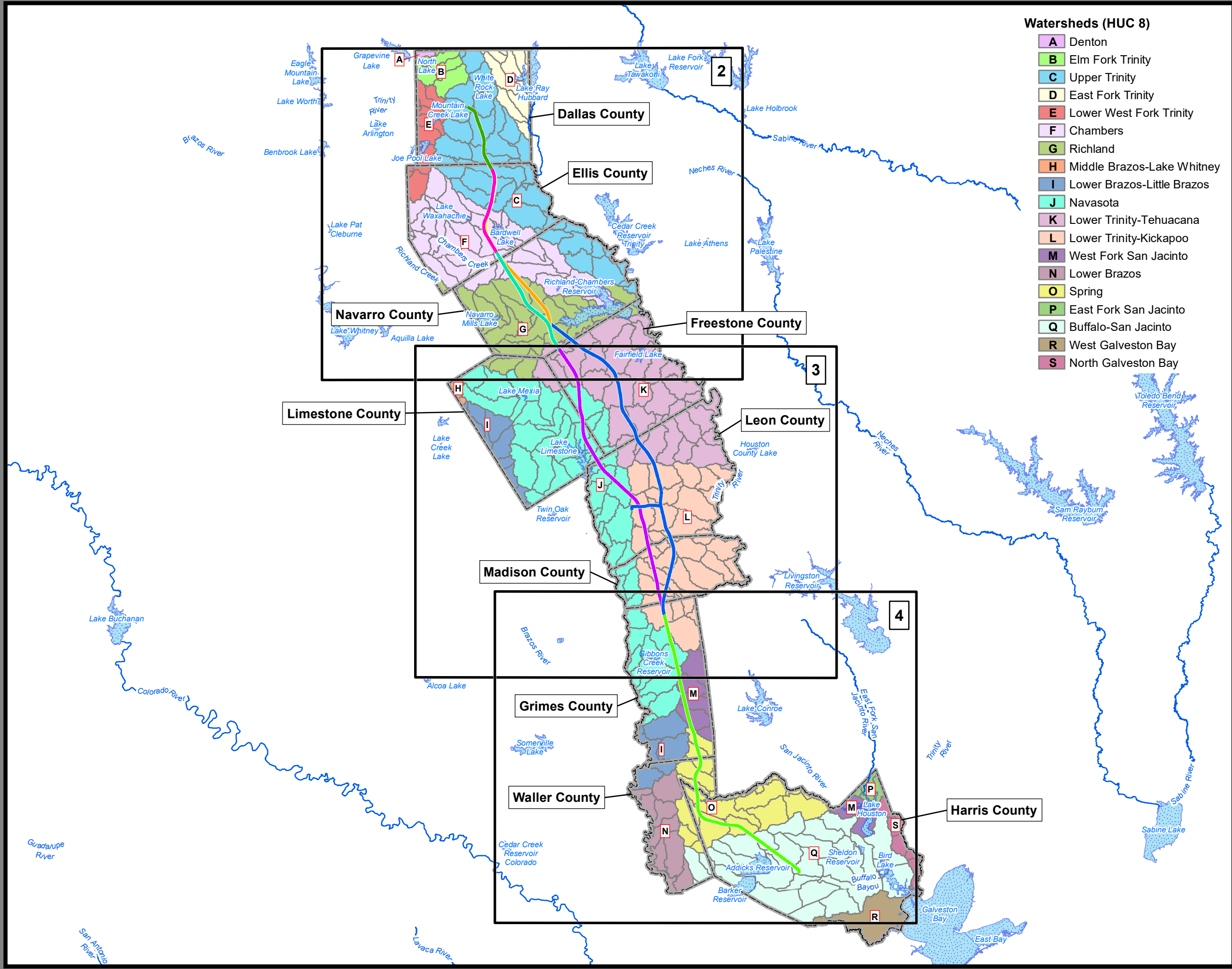


**Dallas to Houston High-Speed Rail
Final Environmental Impact Statement**

**Appendix D:
Surface Water Resources**

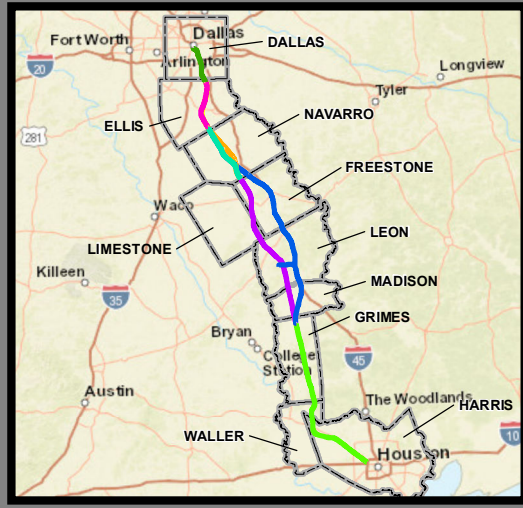


**Federal Railroad
Administration**



Watersheds (HUC 8)

- A Denton
- B Elm Fork Trinity
- C Upper Trinity
- D East Fork Trinity
- E Lower West Fork Trinity
- F Chambers
- G Richland
- H Middle Brazos-Lake Whitney
- I Lower Brazos-Little Brazos
- J Navasota
- K Lower Trinity-Tehuacana
- L Lower Trinity-Kickapoo
- M West Fork San Jacinto
- N Lower Brazos
- O Spring
- P East Fork San Jacinto
- Q Buffalo-San Jacinto
- R West Galveston Bay
- S North Galveston Bay



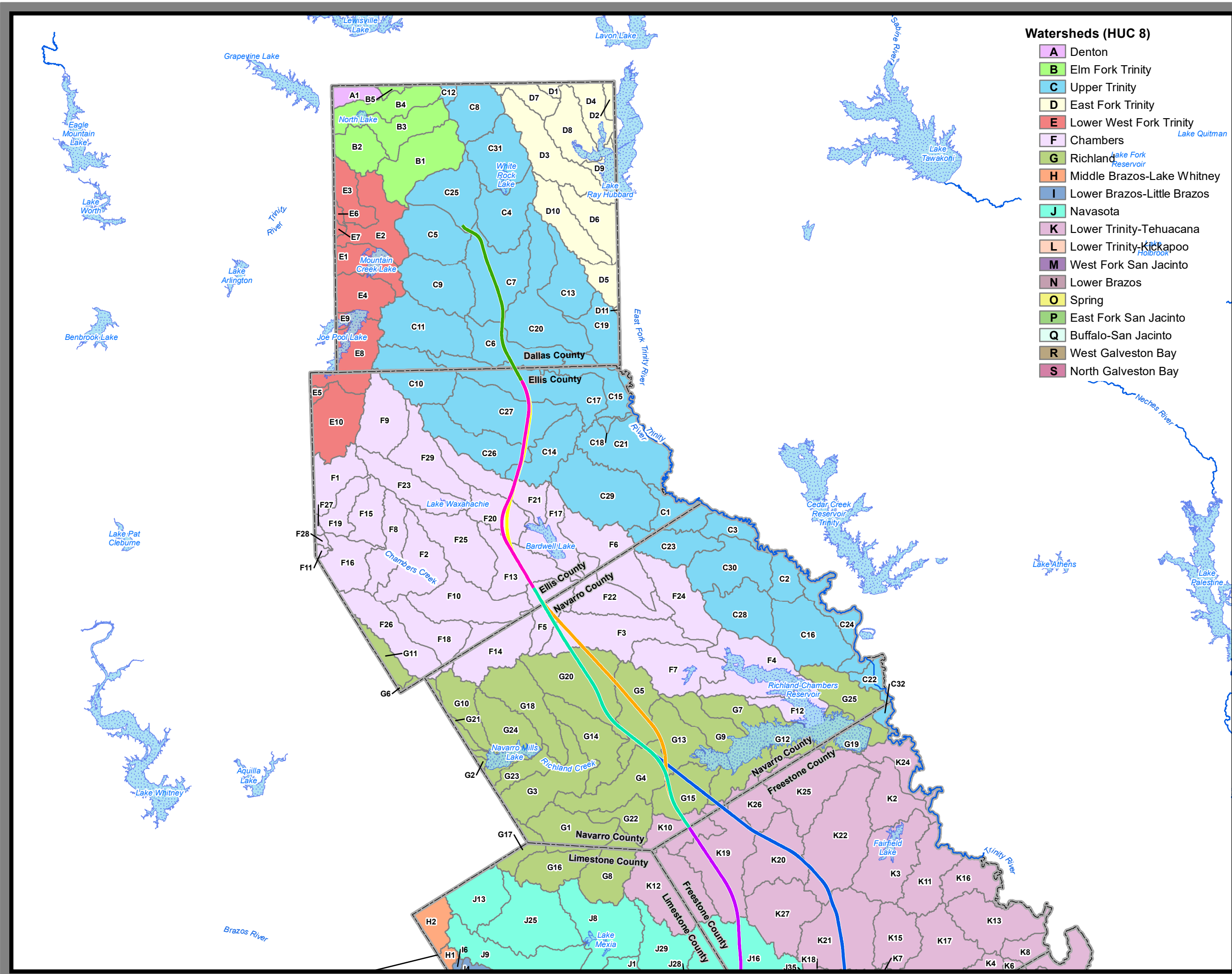
**Dallas to Houston
High-Speed Rail Project
Surface Water Resources
Sheet 1 of 4**

Legend

- Map Index
- Alternative Segments**
- Segment 1
- Segment 2A
- Segment 2B
- Segment 3A
- Segment 3B
- Segment 3C
- Segment 4
- Segment 5
- Subwatershed (HUC12) Boundary
- River/Stream
- Waterbody
- County Boundary

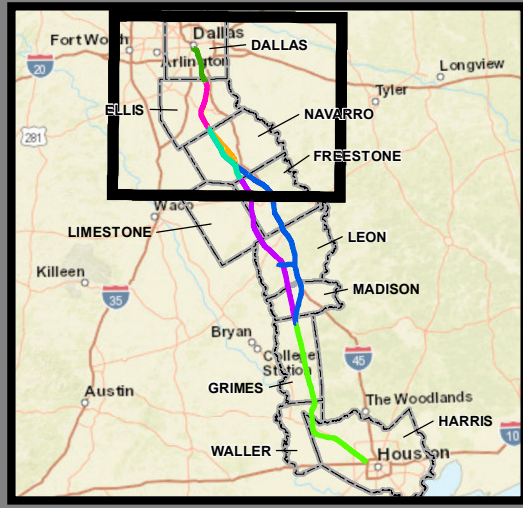
Data Sources: TWDB, TCEQ, USGS





Watersheds (HUC 8)

- A Denton
- B Elm Fork Trinity
- C Upper Trinity
- D East Fork Trinity
- E Lower West Fork Trinity
- F Chambers
- G Richland
- H Middle Brazos-Lake Whitney
- I Lower Brazos-Little Brazos
- J Navasota
- K Lower Trinity-Tehuacana
- L Lower Trinity-Kickapoo
- M West Fork San Jacinto
- N Lower Brazos
- O Spring
- P East Fork San Jacinto
- Q Buffalo-San Jacinto
- R West Galveston Bay
- S North Galveston Bay



**Dallas to Houston
High-Speed Rail Project
Surface Water Resources
Sheet 2 of 4**

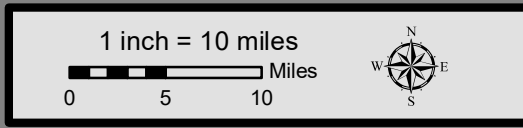
Legend

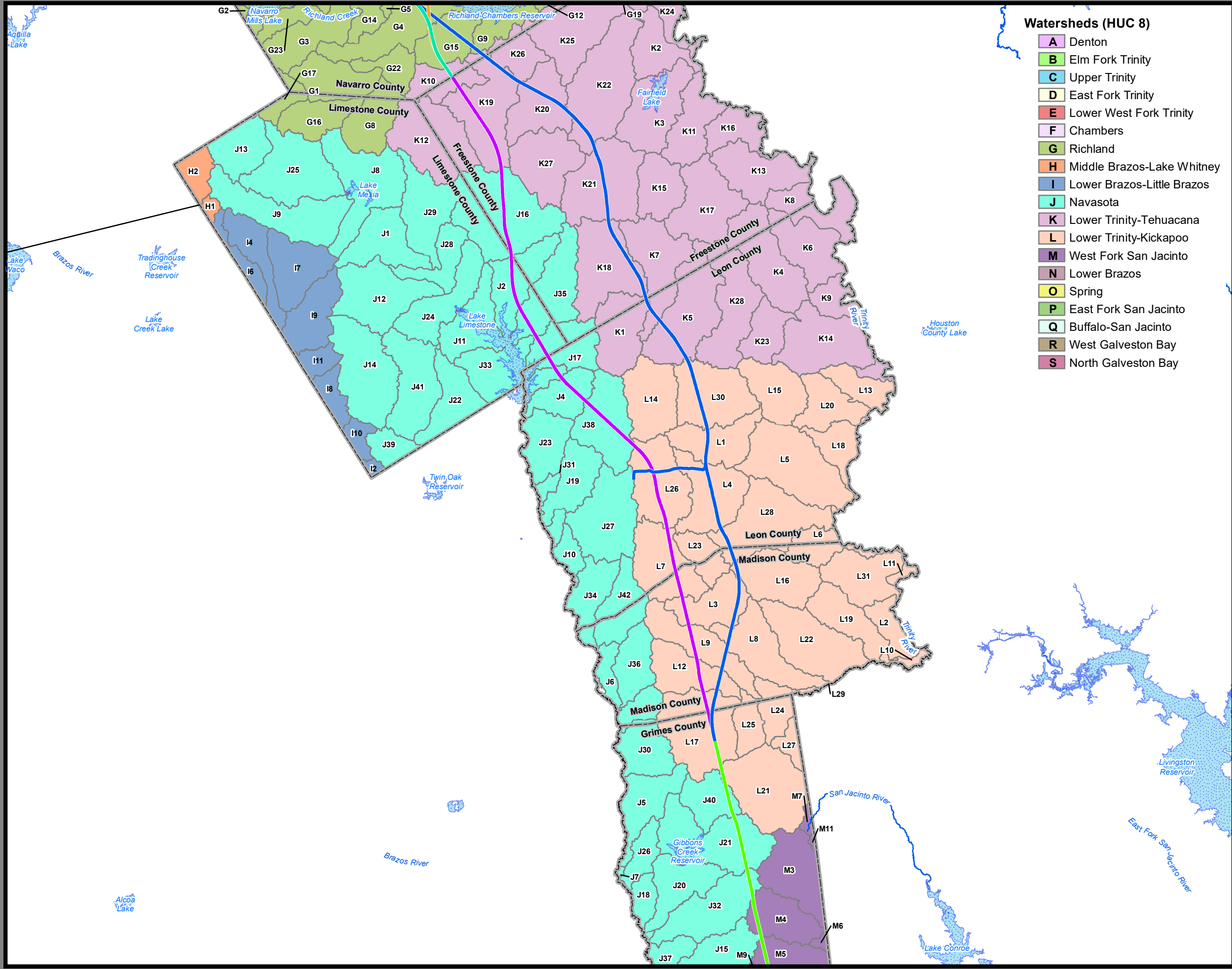
Alternative Segments

- Segment 1
- Segment 2A
- Segment 2B
- Segment 3A
- Segment 3B
- Segment 3C
- Segment 4
- Segment 5

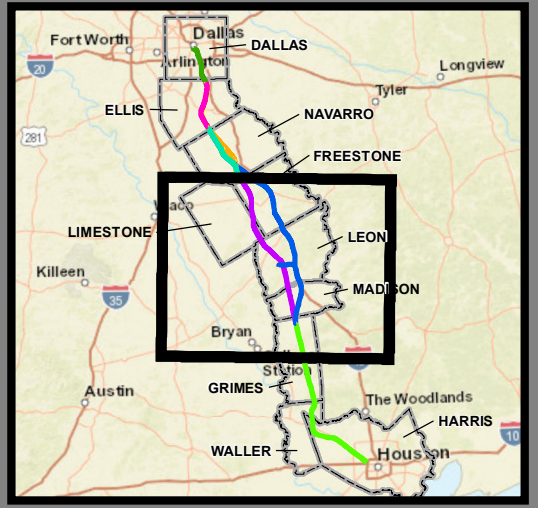
- Subwatershed (HUC12) Boundary
- River/Stream
- Waterbody
- County Boundary

Data Sources: TWDB, TCEQ, USGS





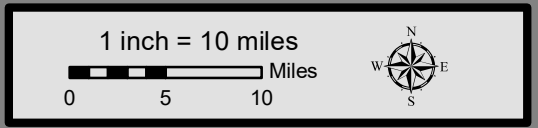
- Watersheds (HUC 8)**
- A** Denton
 - B** Elm Fork Trinity
 - C** Upper Trinity
 - D** East Fork Trinity
 - E** Lower West Fork Trinity
 - F** Chambers
 - G** Richland
 - H** Middle Brazos-Lake Whitney
 - I** Lower Brazos-Little Brazos
 - J** Navasota
 - K** Lower Trinity-Tehuacana
 - L** Lower Trinity-Kickapoo
 - M** West Fork San Jacinto
 - N** Lower Brazos
 - O** Spring
 - P** East Fork San Jacinto
 - Q** Buffalo-San Jacinto
 - R** West Galveston Bay
 - S** North Galveston Bay

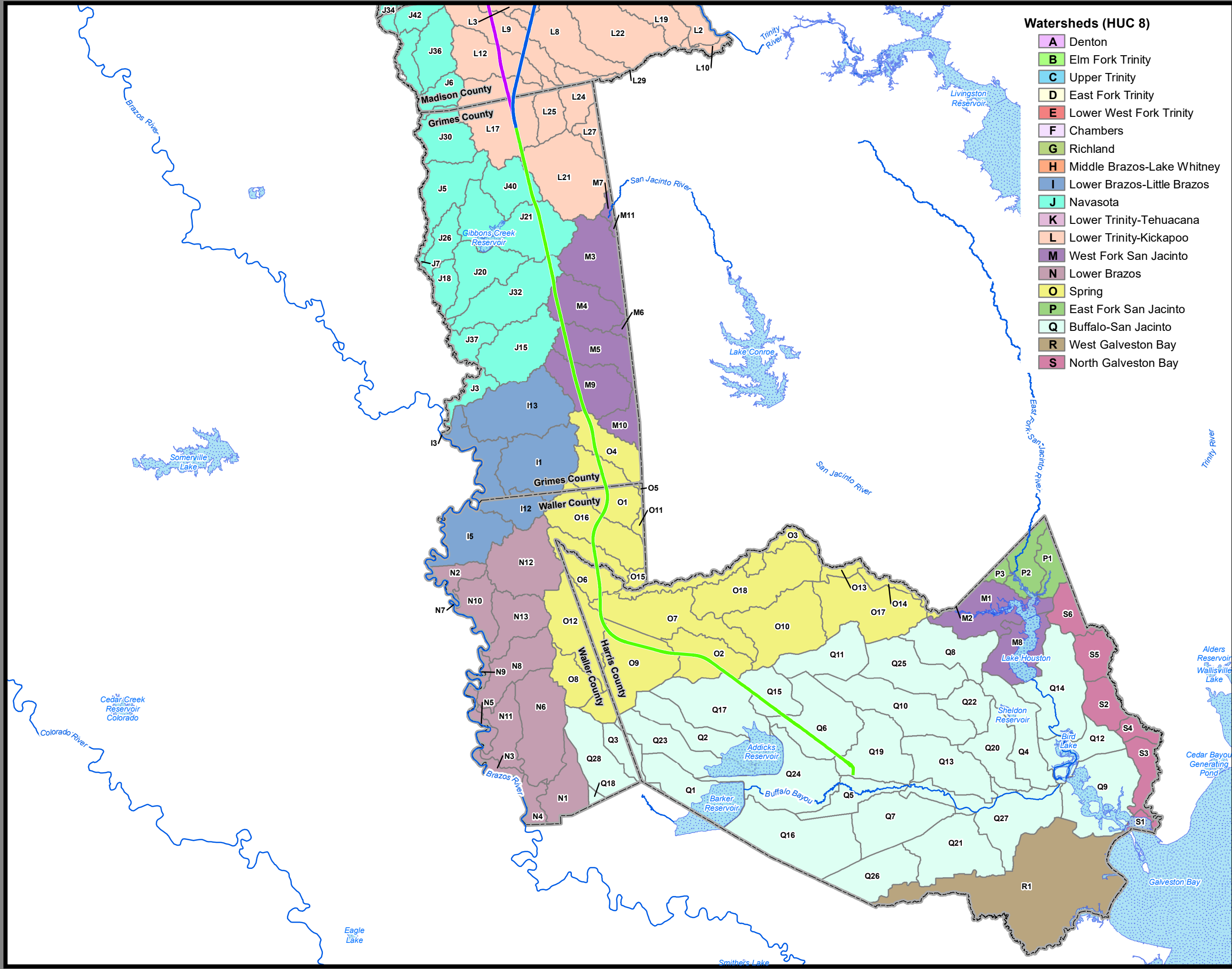


Dallas to Houston High-Speed Rail Project
Surface Water Resources
Sheet 3 of 4

- Legend**
- Alternative Segments**
- Segment 1
 - Segment 2A
 - Segment 2B
 - Segment 3A
 - Segment 3B
 - Segment 3C
 - Segment 4
 - Segment 5
- Subwatershed (HUC12) Boundary
 - River/Stream
 - Waterbody
 - County Boundary

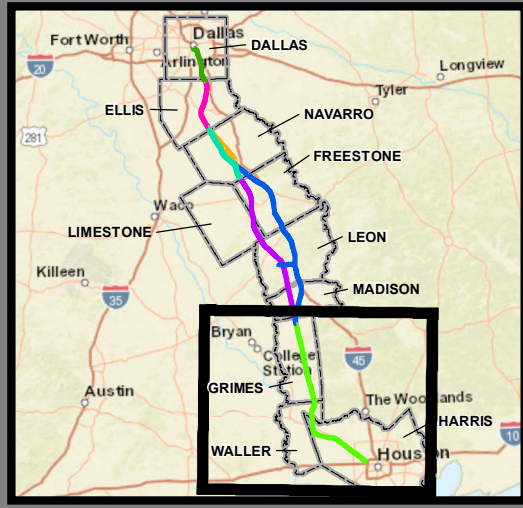
Data Sources: TWDB, TCEQ, USGS





Watersheds (HUC 8)

- A Denton
- B Elm Fork Trinity
- C Upper Trinity
- D East Fork Trinity
- E Lower West Fork Trinity
- F Chambers
- G Richland
- H Middle Brazos-Lake Whitney
- I Lower Brazos-Little Brazos
- J Navasota
- K Lower Trinity-Tehuacana
- L Lower Trinity-Kickapoo
- M West Fork San Jacinto
- N Lower Brazos
- O Spring
- P East Fork San Jacinto
- Q Buffalo-San Jacinto
- R West Galveston Bay
- S North Galveston Bay



**Dallas to Houston
High-Speed Rail Project
Surface Water Resources
Sheet 4 of 4**

Legend

- Alternative Segments**
- Segment 1
 - Segment 2A
 - Segment 2B
 - Segment 3A
 - Segment 3B
 - Segment 3C
 - Segment 4
 - Segment 5
- Subwatershed (HUC12) Boundary
 - River/Stream
 - Waterbody
 - County Boundary

Data Sources: TWDB, TCEQ, USGS

