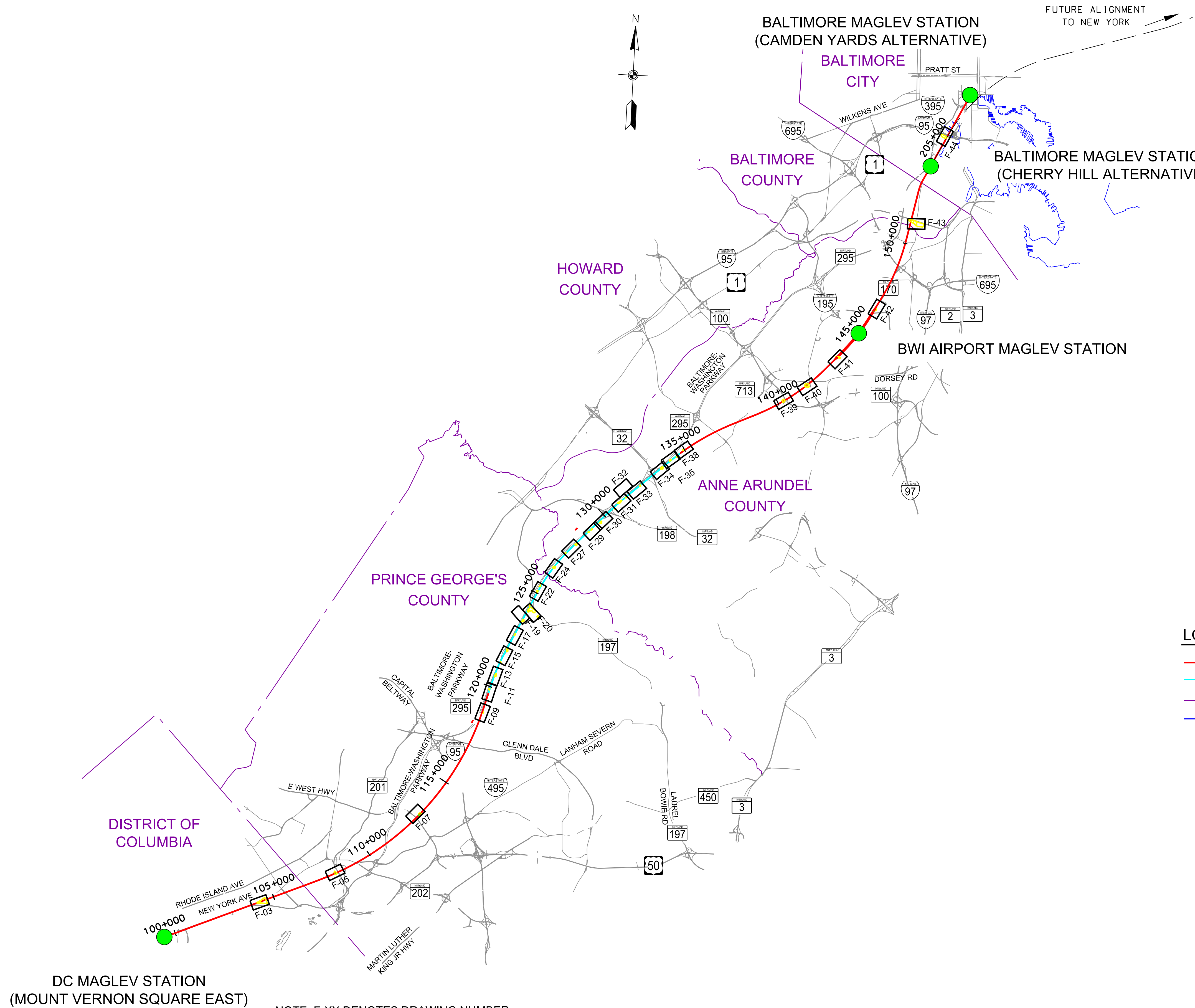


Printed By: USMC665788 p:\high-eas2\pw\beniley.com\high-eas2\pw-10\Documents\Transportation\Eng\B\The NORTHHEAST MAGLEV\VEIS\Technical\Baltimore - DC\CADD\Custneis\DEIS - Facilities\_DEIS.dgn



**LOCATION MAP AND INDEX LEGEND**

- ALIGNMENT CENTERLINE - DEEP TUNNEL
- ALIGNMENT CENTERLINE - ELEVATED STRUCTURE
- - - COUNTY LIMIT LINE
- EDGE OF WATER
- STATION LOCATION

DC MAGLEV STATION  
(MOUNT VERNON SQUARE EAST)

NOTE: F-XX DENOTES DRAWING NUMBER

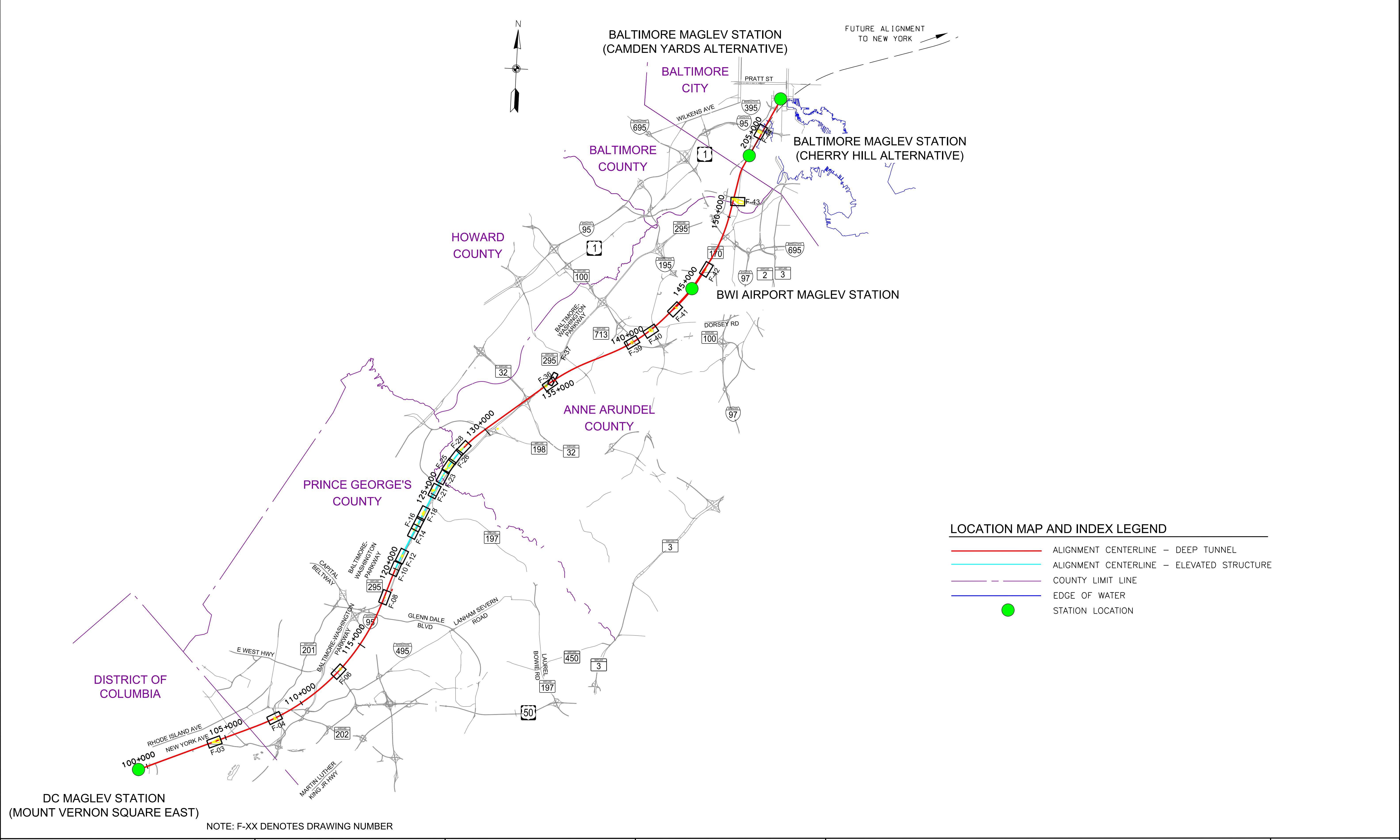


VERTICAL SCALE:

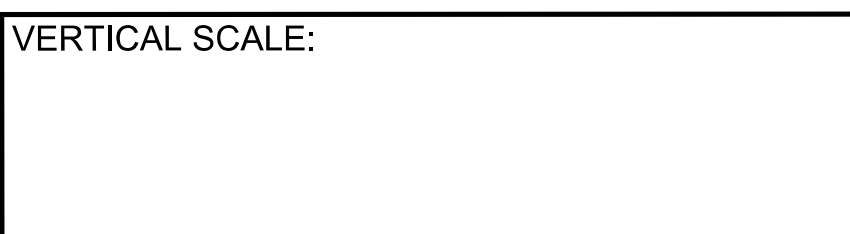
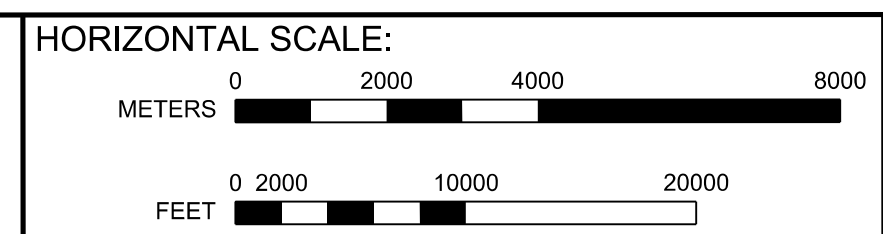
**BALTIMORE-WASHINGTON SCMAGLEV  
J ALIGNMENT  
FACILITIES KEY MAP**

DATE:	6/10/2020
DRAWING NO.	F-01
SHEET NO.	-- OF --

Printed By USMC667288 p:\high-eas2\pw\beniley.com\high-eas2\pw-10\Documents\Transportation Eng BU\The NORTHHEAST MAGLEV\VEIS\Technical\Baltimore - DC\CADD\Custsheet\DEIS - Facilities\_DEIS.dgn 6/10/2020



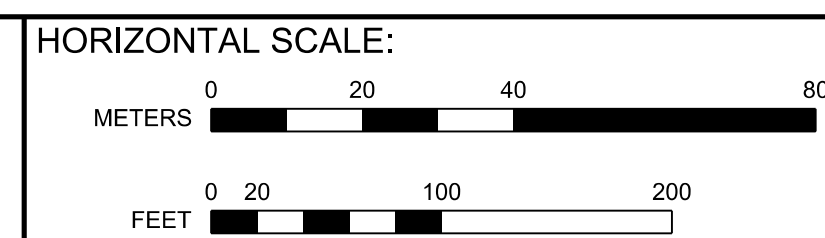
NOTE: F-XX DENOTES DRAWING NUMBER



BALTIMORE-WASHINGTON SCMAGLEV  
J1 ALIGNMENT  
FACILITIES KEY MAP

DATE:	6/10/2020
DRAWING NO.	F-02
SHEET NO.	-- OF --

Printed By USM0827288 p:\high-eas2\pw\_bentley.com\high-eas2\pw-1\Documents\Transportation\_Eng\Baltimore\NORTHHEAST\MAGLEV\VEIS\Technical\Baltimore - DC\CADD\Cutsheets\DEIS - Facilities\_DEIS.dgn 6/10/2020



VERTICAL SCALE:  
NONE

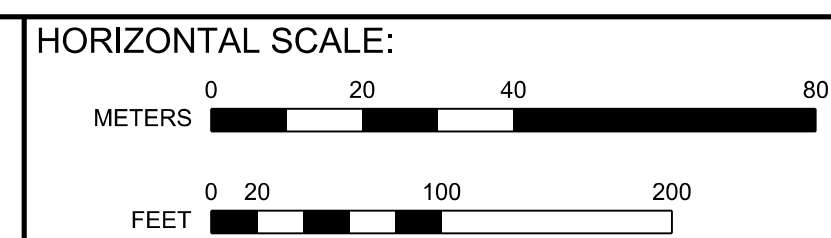
BALTIMORE-WASHINGTON SCMAGLEV  
J1 AND J ALIGNMENTS  
SUBSTATION & FA / EE FACILITY STA. 104+250

DATE: 6/10/2020  
DRAWING NO. F-03  
SHEET NO. -- OF --

Printed By USMC882788 p:\high-eas2\pw\_bentley.com\high-eas2-pw-10\Documents\Transportation\_Eng\_B\The NORTH-EAST MAGLEV\VEIS\Technical\Baltimore - DC\CADD\Cutsheets\DEIS - Facilities\_DEIS.dgn 6/10/2020



NOTE: THE LAYOUT OF THE FRESH AIR / EMERGENCY EGRESS FACILITY SITE MAY BE UPDATED WITHIN THE LIMITS OF THE EXISTING PARKING LOT, BASED ON FURTHER DISCUSSIONS WITH WASHINGTON SUBURBAN SANITARY COMMISSION.



VERTICAL SCALE:  
NONE

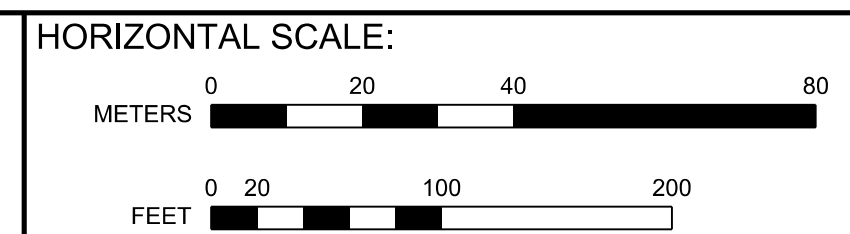
BALTIMORE-WASHINGTON SCMAGLEV  
J1 ALIGNMENT  
FRESH AIR / EMERGENCY EGRESS FACILITY STA. 108+150

DATE: 6/10/2020  
DRAWING NO. F-04  
SHEET NO. -- OF --

Printed By USMC882788 p:\high-eas2\pw\_bentley.com\high-eas2\pw-10\Documents\Transportation\_Eng\_BU\The NORTH-EAST MAGLEV\VE\B1\Technical\Baltimore - DC\CADD\Cutsheets\DEIS - Facilities\_DEIS.dgn



NOTE: THE LAYOUT OF THE FRESH AIR / EMERGENCY EGRESS FACILITY SITE MAY BE UPDATED WITHIN THE LIMITS OF THE EXISTING PARKING LOT, BASED ON FURTHER DICUSSIONS WITH WASHINGTON SUBURBAN SANITARY COMMISSION.

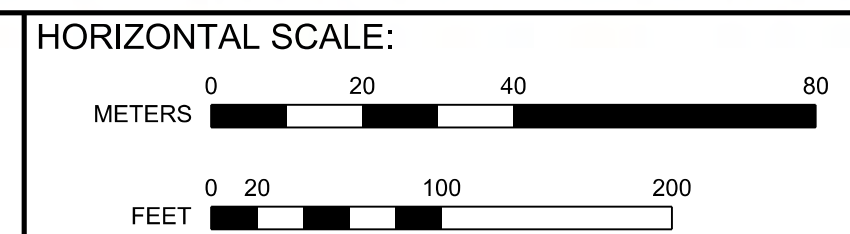
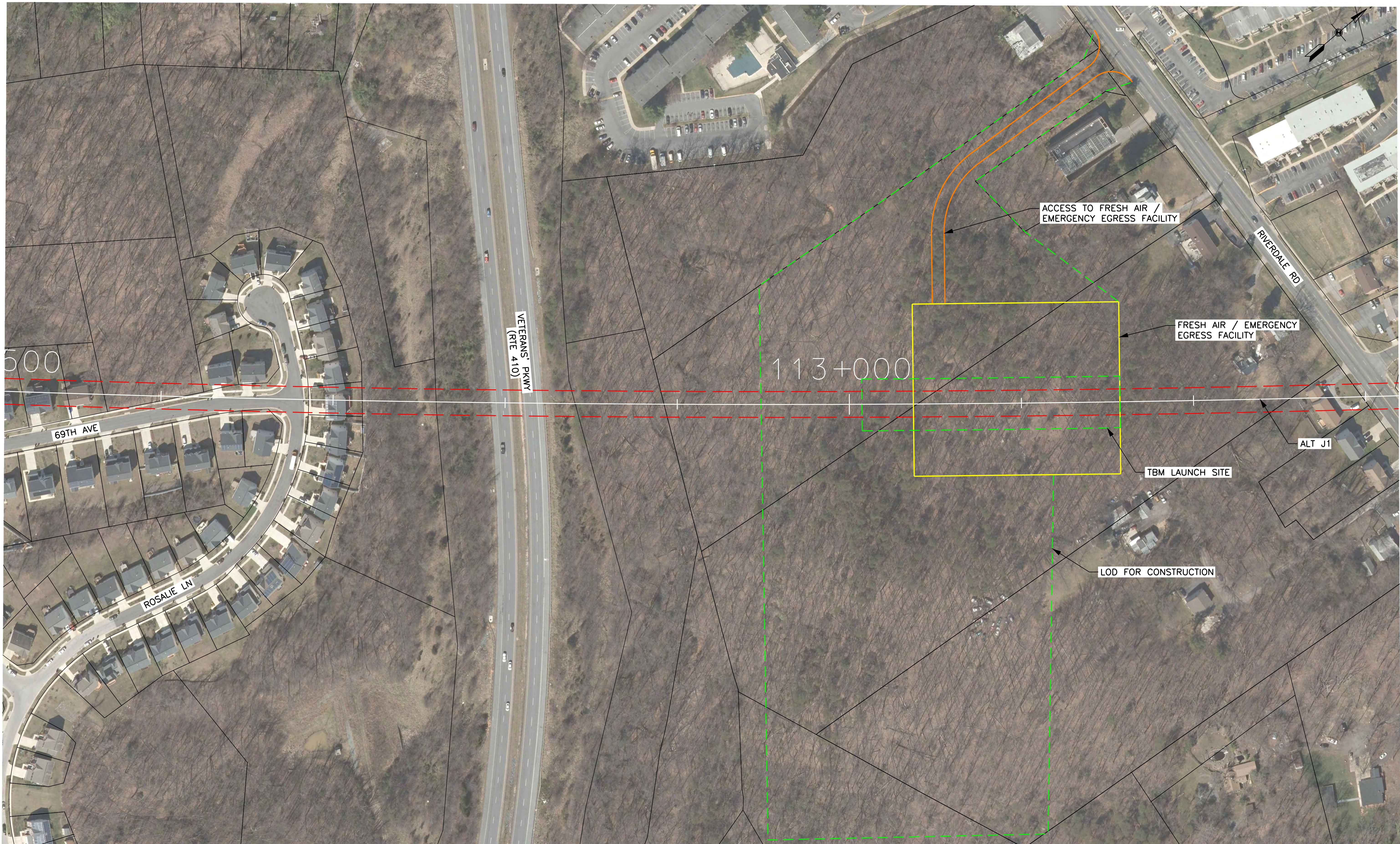


VERTICAL SCALE: NONE

BALTIMORE-WASHINGTON SCMAGLEV  
J ALIGNMENT  
FRESH AIR / EMERGENCY EGRESS FACILITY STA. 108+150

DATE: 6/10/2020  
DRAWING NO. F-05  
SHEET NO. -- OF --

Printed By USMC882788 p:\high-eas2\pw\_bentley.com\high-eas2\pw-10\Documents\Transportation\_Eng\B\The NORTHHEAST\MAGLEV\VE\B1\Technical\Ballmore - DC\CADD\Cutehees\DEIS - Facilities\_DEIS.dgn

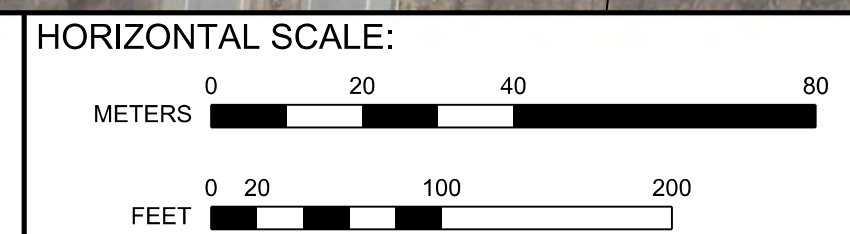
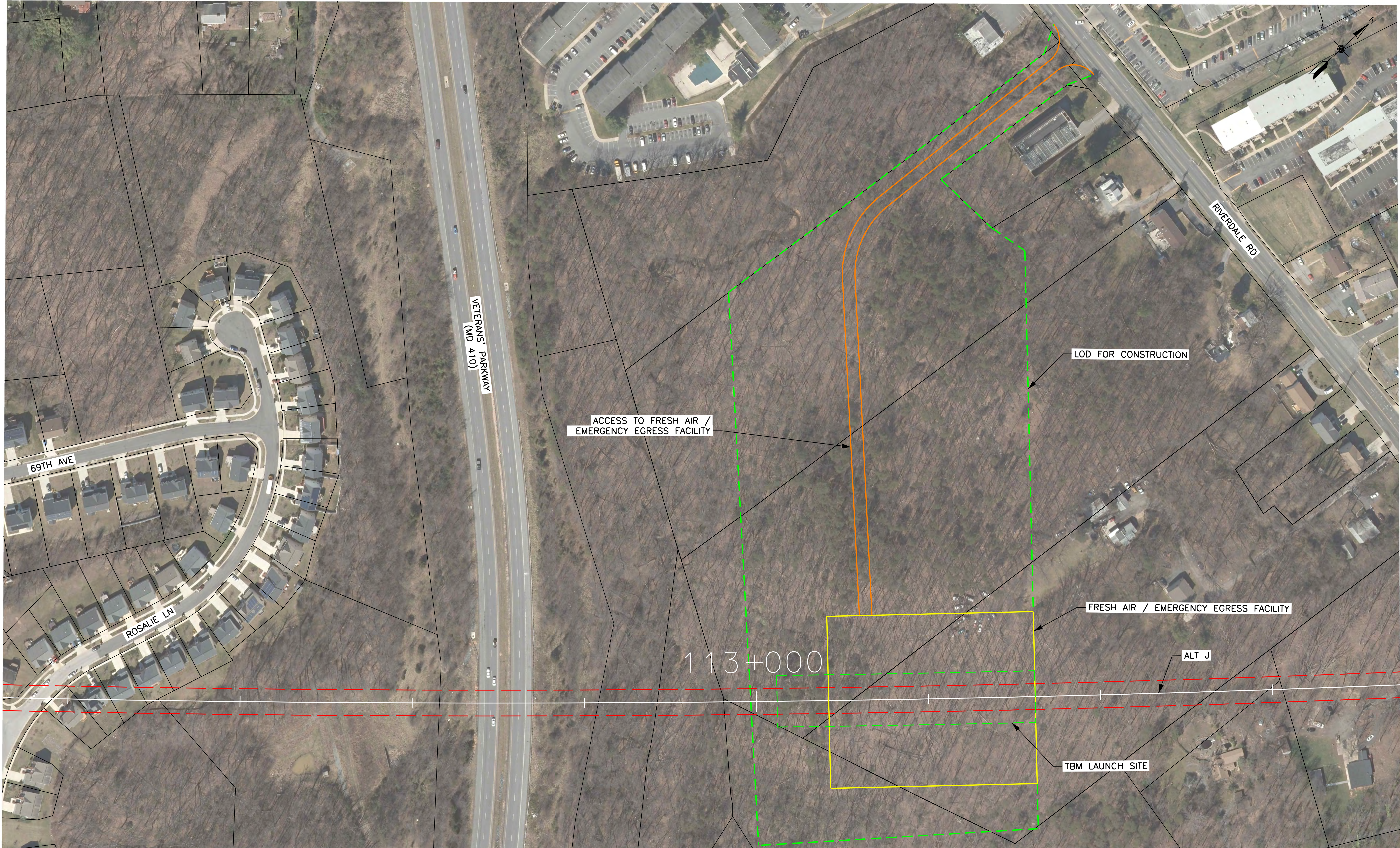


VERTICAL SCALE:  
NONE

BALTIMORE-WASHINGTON SCMAGLEV  
J1 ALIGNMENT  
FRESH AIR / EMERGENCY EGRESS FACILITY STA. 112+900

DATE: 6/10/2020  
DRAWING NO. F-06  
SHEET NO. -- OF --

Printed By USMC882788 p:\high-eas2\pw\_bentley.com\high-eas2\pw-10\Documents\Transportation\_Eng\_BUI\The NORTHHEAST\MAGLEV\Technical\Ballmore - DC\CADD\Cutsheets\DEIS - Facilities\_DEIS.dgn 6/10/2020

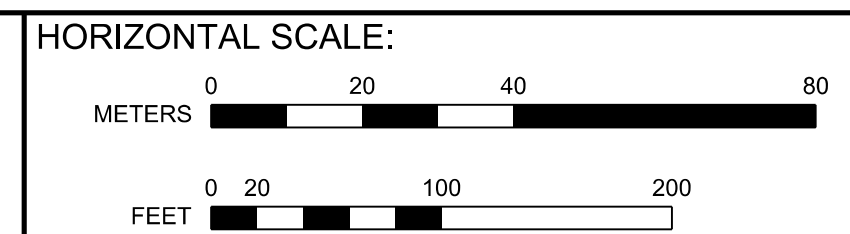
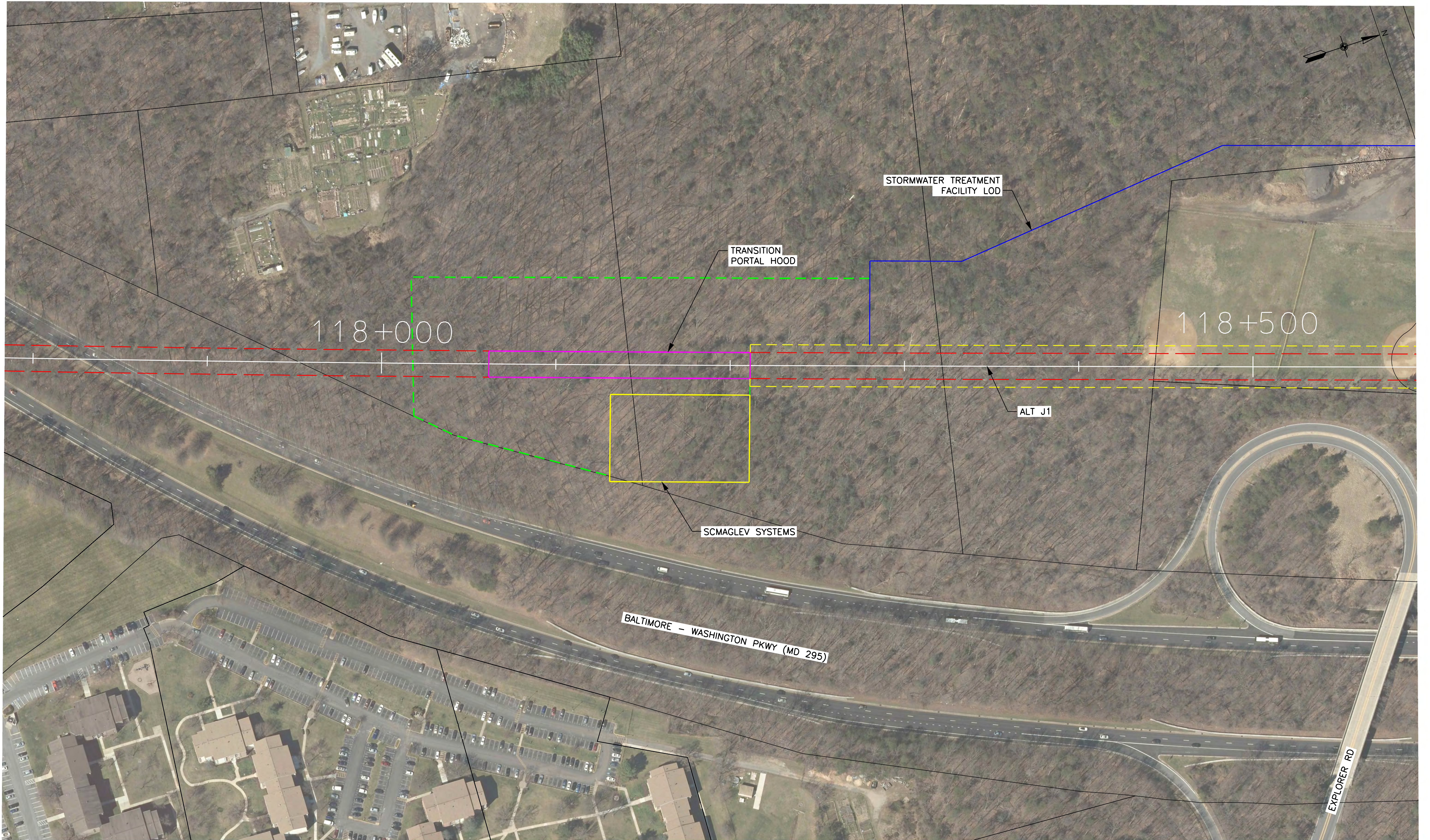


VERTICAL SCALE:  
NONE

BALTIMORE-WASHINGTON SCMAGLEV  
J ALIGNMENT  
FRESH AIR / EMERGENCY EGRESS FACILITY STA. 112+950

DATE: 6/10/2020  
DRAWING NO. F-07  
SHEET NO. -- OF --

Printed By USMC882788 p:\high-eas2\pw\_bentley.com\high-eas2-pw-10\Documents\Transportation\_Eng\B\The NORTH-EAST MAGLEV\WEB\Technical\Baltimore - DC\CADD\Cutsheets\DEIS - Facilities - DEIS.dgn 6/10/2020

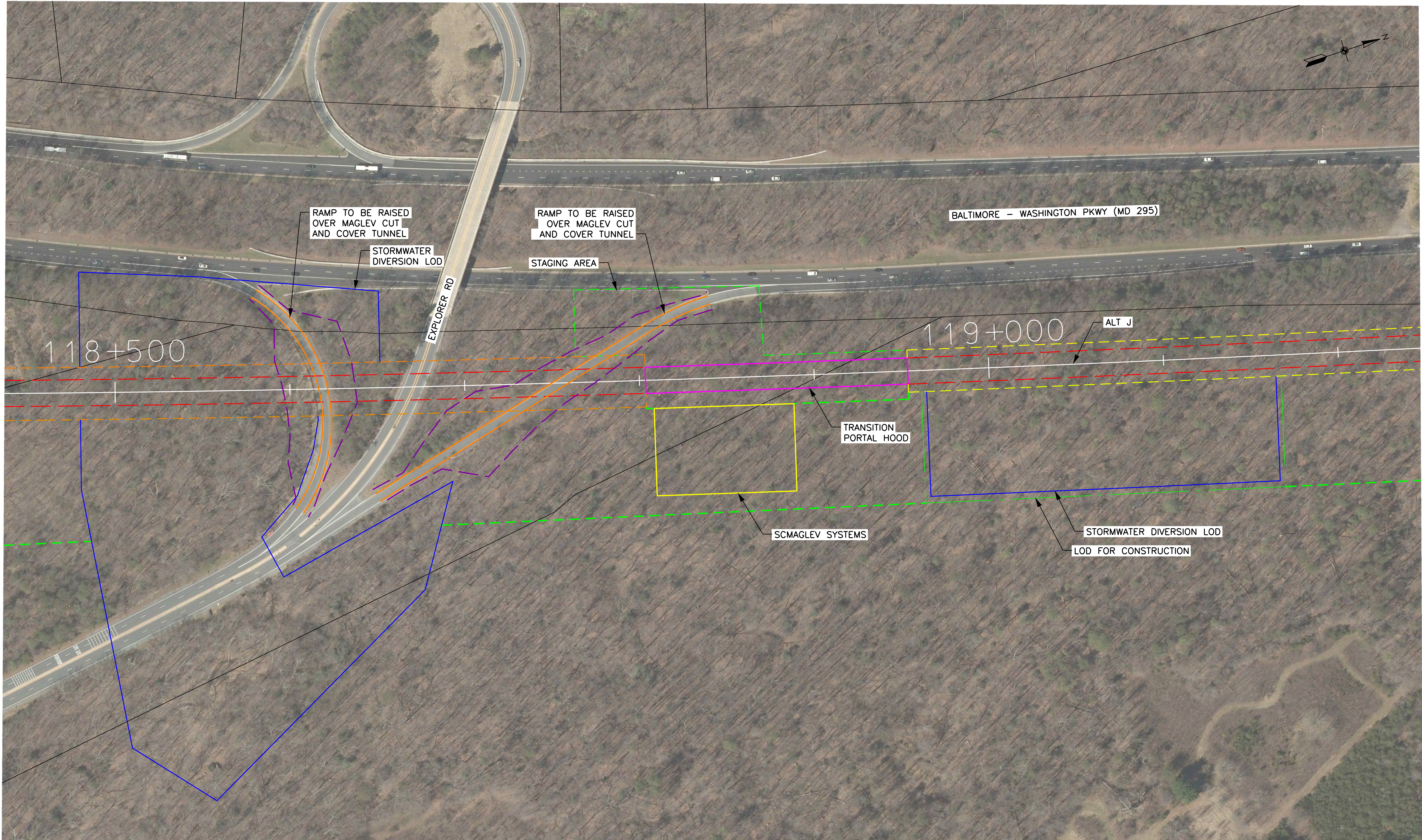
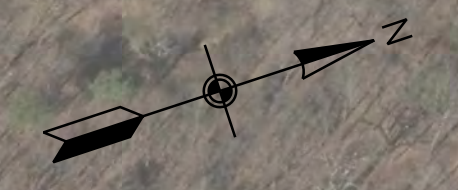


VERTICAL SCALE:  
NONE

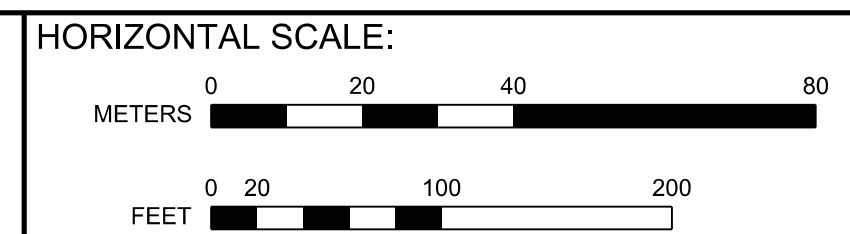
BALTIMORE-WASHINGTON SCMAGLEV  
J1 ALIGNMENT  
SCMAGLEV SYSTEMS STA. 118+150

DATE: 6/10/2020  
DRAWING NO. F-08  
SHEET NO. -- OF --





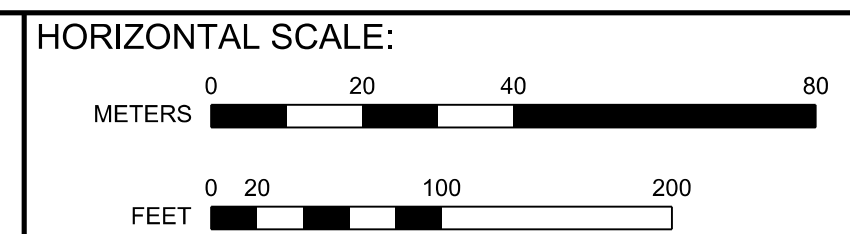
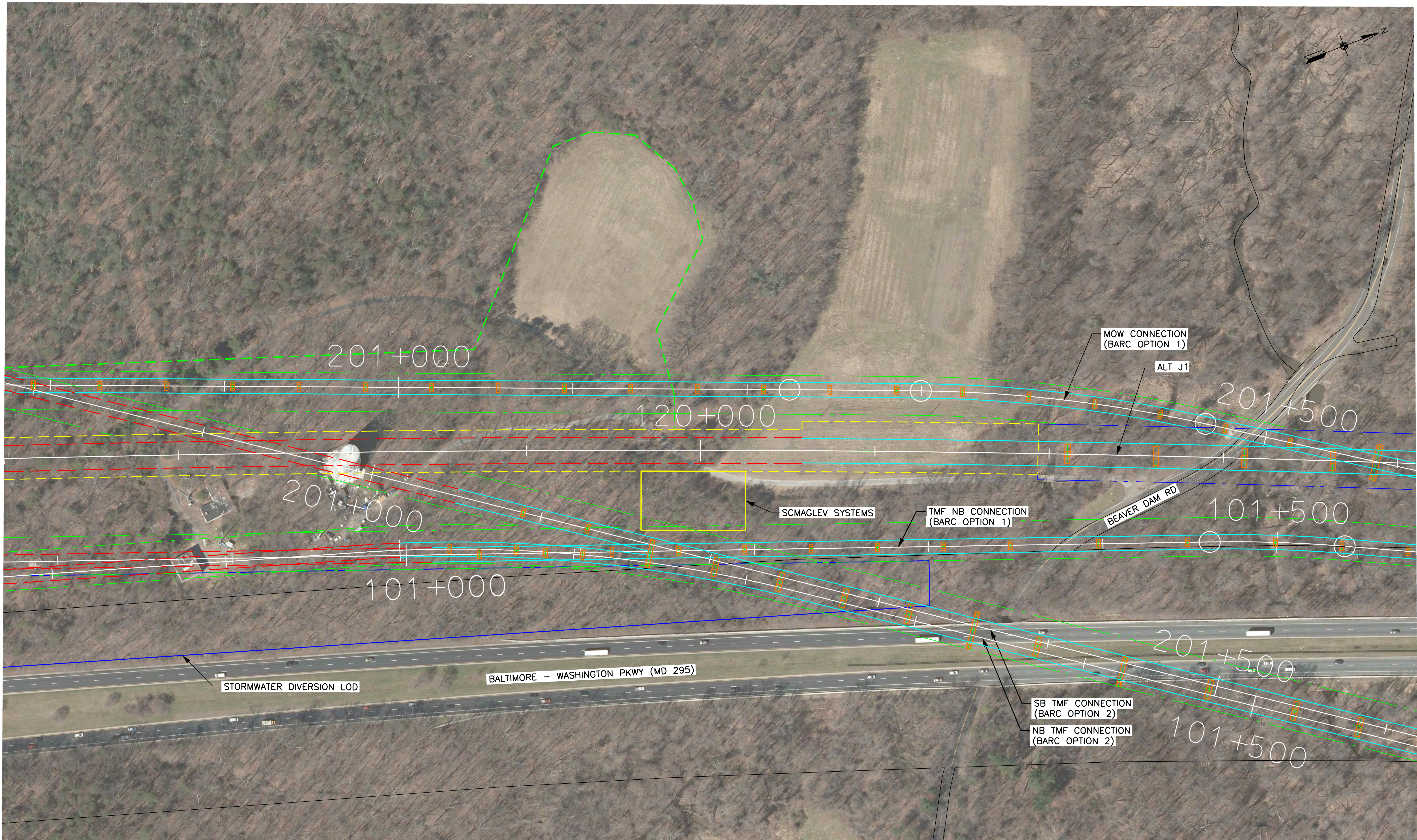
Printed By USM0882788 6/11/2020 p:\high-eas2-pw-bentley.com\high-eas2-pw-10\Documents\Transportation\_Eng\BUThe NORTHHEAST MAGLEV\VE\B1\Technical\Baltimore - DC\CADD\Cutsheets\DEIS - Facilities\_DEIS.dgn



BALTIMORE-WASHINGTON SCMAGLEV  
J ALIGNMENT  
SCMAGLEV SYSTEMS STA. 118+850

DATE: 6/11/2020  
DRAWING NO. F-09  
SHEET NO. -- OF --

Printed By USMC882788 p:\high-eas2\pw\_bentley.com\high-eas2-pw-10\Documents\Transportation\Eng\BUThe NORTH-EAST MAGLEV\VEIS\Technical\Baltimore - DC\CADD\Cutsheets\DEIS - Facilities\_DEIS.dgn 6/10/2020

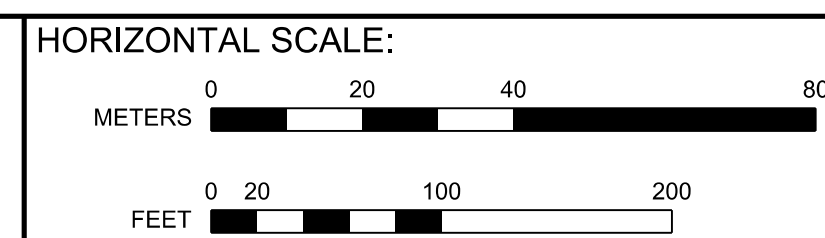
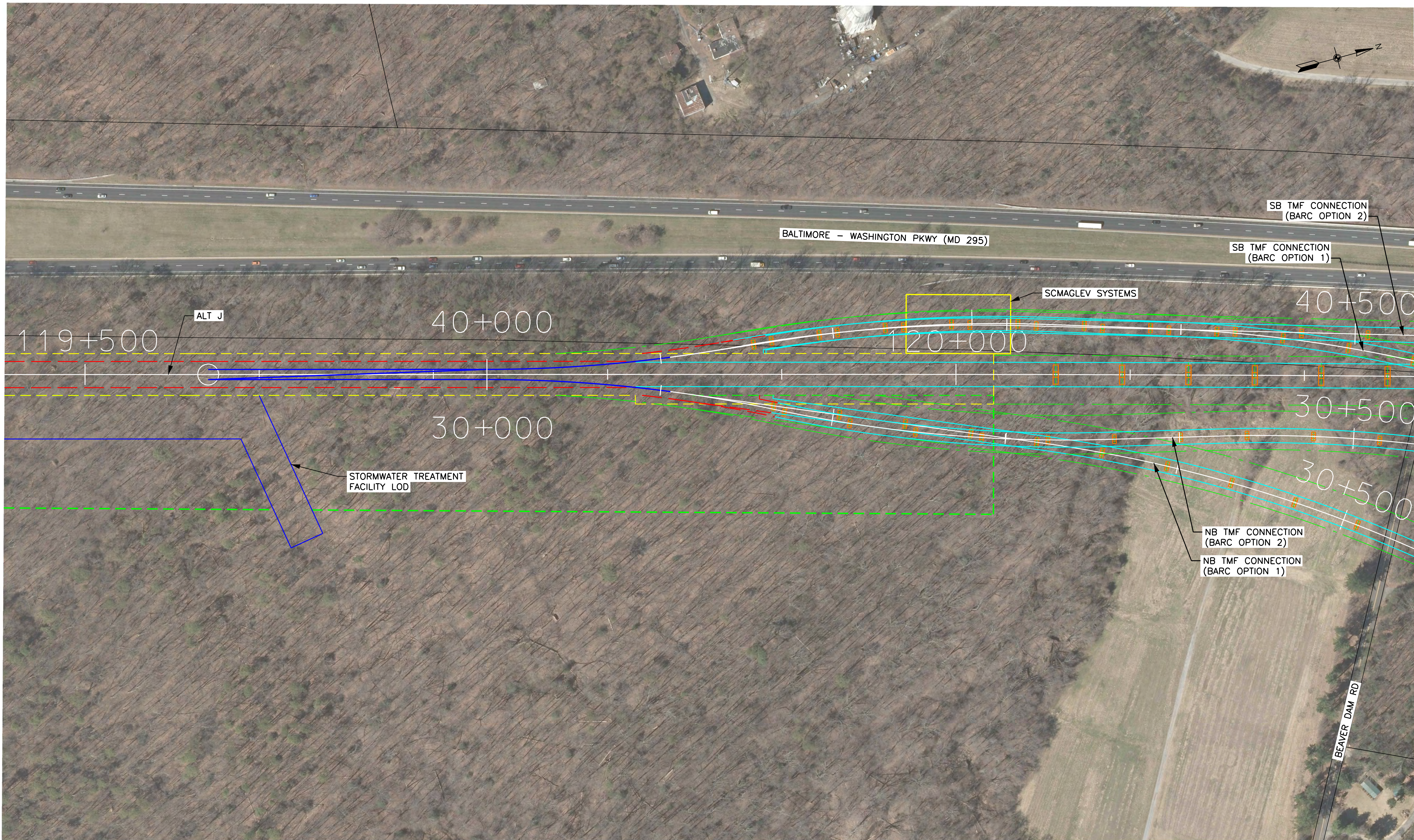


VERTICAL SCALE:  
NONE

BALTIMORE-WASHINGTON SCMAGLEV  
J1 ALIGNMENT  
SCMAGLEV SYSTEMS STA. 120+000

DATE: 6/10/2020  
DRAWING NO. F-10  
SHEET NO. -- OF --

Printed By: USMC882788 p:\high-eas2-pw-bentley.com\high-eas2-pw-10\Documents\Transportation\Eng\BUTHE NORTH-EAST\MAGLEV\VE\EST\Technical\Baltimore - DC\CADD\Cutsheets\DEIS - Facilities - DEIS.dgn

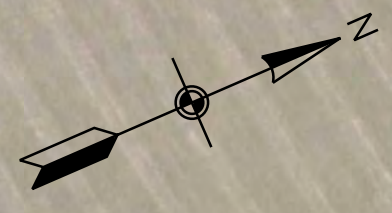


VERTICAL SCALE:

NONE

BALTIMORE-WASHINGTON SCMAGLEV  
J ALIGNMENT  
SCMAGLEV SYSTEMS STA. 120+000

DATE: 6/10/2020  
DRAWING NO. F-11  
SHEET NO. -- OF --



LOW-CLEARANCE VIADUCT SECURITY FENCE

MOW CONNECTION  
(BARC OPTION 1)

TMF NB CONNECTION  
(BARC OPTION 1)

120+500

ALT J1

121+000

SCMAGLEV SYSTEMS

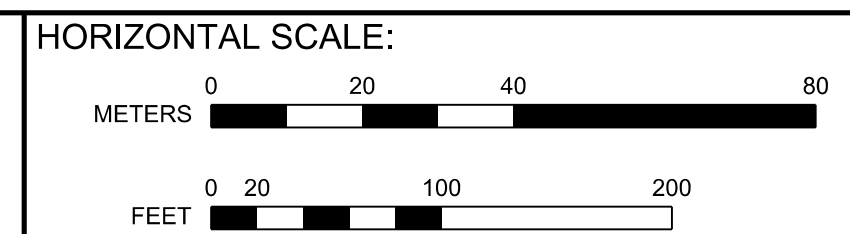
202+000

BALTIMORE - WASHINGTON PKWY (MD 295)

102+000

SB TMF CONNECTION  
(BARC OPTION 2)

NB TMF CONNECTION  
(BARC OPTION 2)  
SEE DRAWING NO. TMF-18



VERTICAL SCALE:  
NONE

BALTIMORE-WASHINGTON SCMAGLEV  
J1 ALIGNMENT  
SCMAGLEV SYSTEMS STA. 120+800

DATE: 6/12/2020  
DRAWING NO. F-12  
SHEET NO. -- OF --

Printed By USMC882788 p:\high-eas2\pw\_bentley.com\high-eas2-pw-10\Documents\Transportation\Eng\B\The NORTH-EAST MAGLEV\WEB\Technical\Baltimore - DC\CADD\Cutehees\DEIS - Facilities - DEIS.dgn 6/12/2020



BEAVER DAM RD

BALTIMORE - WASHINGTON PKWY (MD 295)

120+500

121+000

ALT J

LOW-CLEARANCE VIADUCT SECURITY FENCE

SCMAGLEV SYSTEMS

41+000

31+000

41+000

31+000

SB TMF CONNECTION  
(BARC OPTION 1)

NB TMF CONNECTION  
(BARC OPTION 1)

SB TMF CONNECTION  
(BARC OPTION 2)  
SEE DRAWING NO. TMF-14

NB TMF CONNECTION  
(BARC OPTION 2)



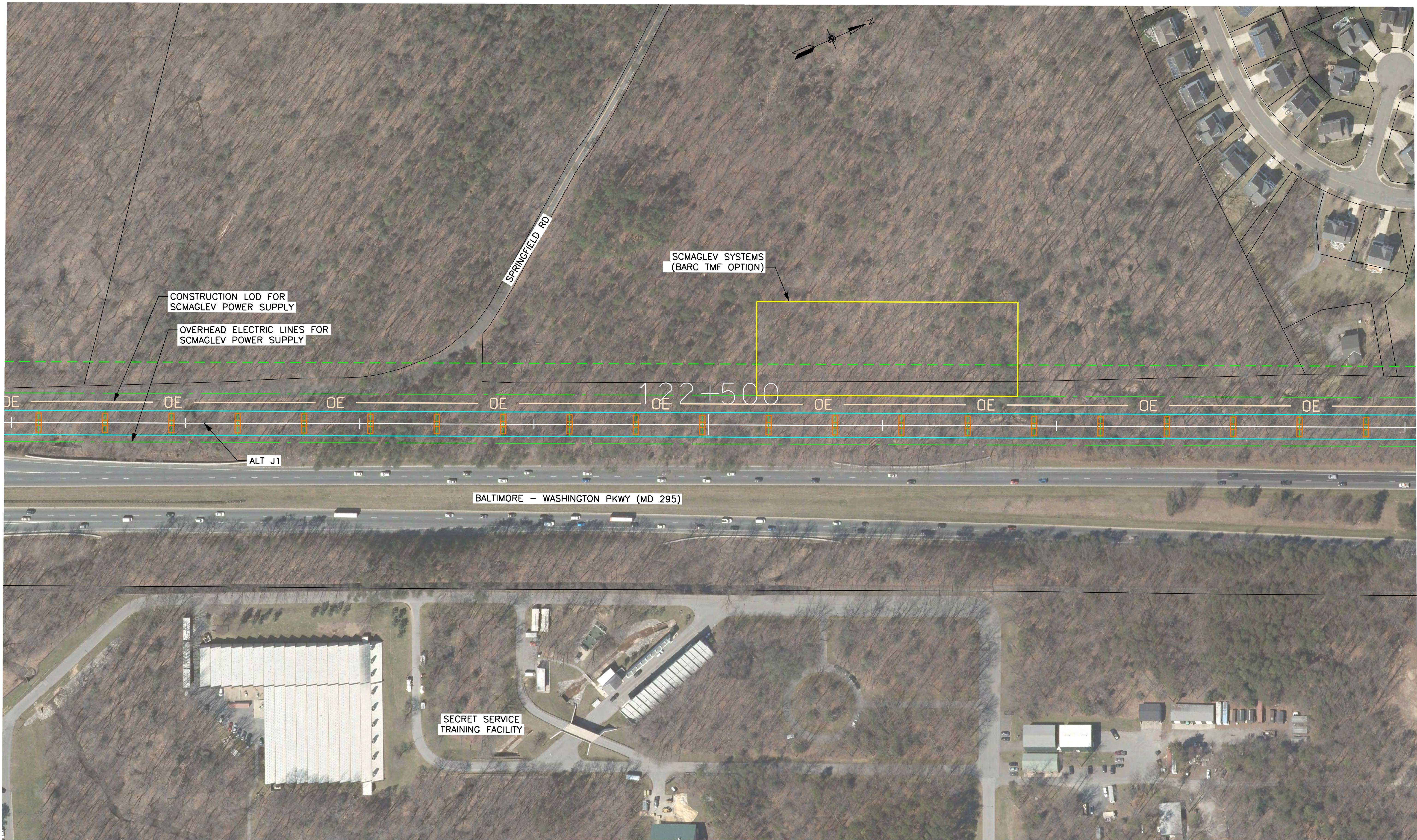
VERTICAL SCALE:  
NONE

BALTIMORE-WASHINGTON SCMAGLEV  
J ALIGNMENT  
SCMAGLEV SYSTEMS STA. 120+650

DATE: 6/12/2020  
DRAWING NO. F-13  
SHEET NO. -- OF --

Printed By USMC882788 p:\high-eas2\pw\_bentley.com\high-eas2-pw-10\Documents\Transportation\Eng\B\The NORTH-EAST MAGLEV\VE\B1\Technical\Baltimore - DC\CADD\Cutsheets\DEIS - Facilities\_DEIS.dgn 6/12/2020

Printed By USM0882788 p:\high-eas2\pw\_bentley.com\high-eas2-pw-10\Documents\Transportation\Eng\B\The NORTHHEAST MAGLEV\VEIS\Technical\Baltimore - DC\CADD\Cutehees\DEIS - Facilities - DEIS.dgn 6/10/2020



CONSTRUCTION LOD FOR SCMAGLEV POWER SUPPLY

OVERHEAD ELECTRIC LINES FOR SCMAGLEV POWER SUPPLY

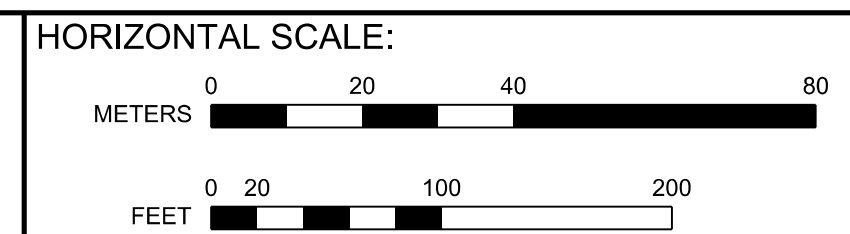
SCMAGLEV SYSTEMS (BARC TMF OPTION)

ALT J1

BALTIMORE - WASHINGTON PKWY (MD 295)

SECRET SERVICE TRAINING FACILITY

122+500

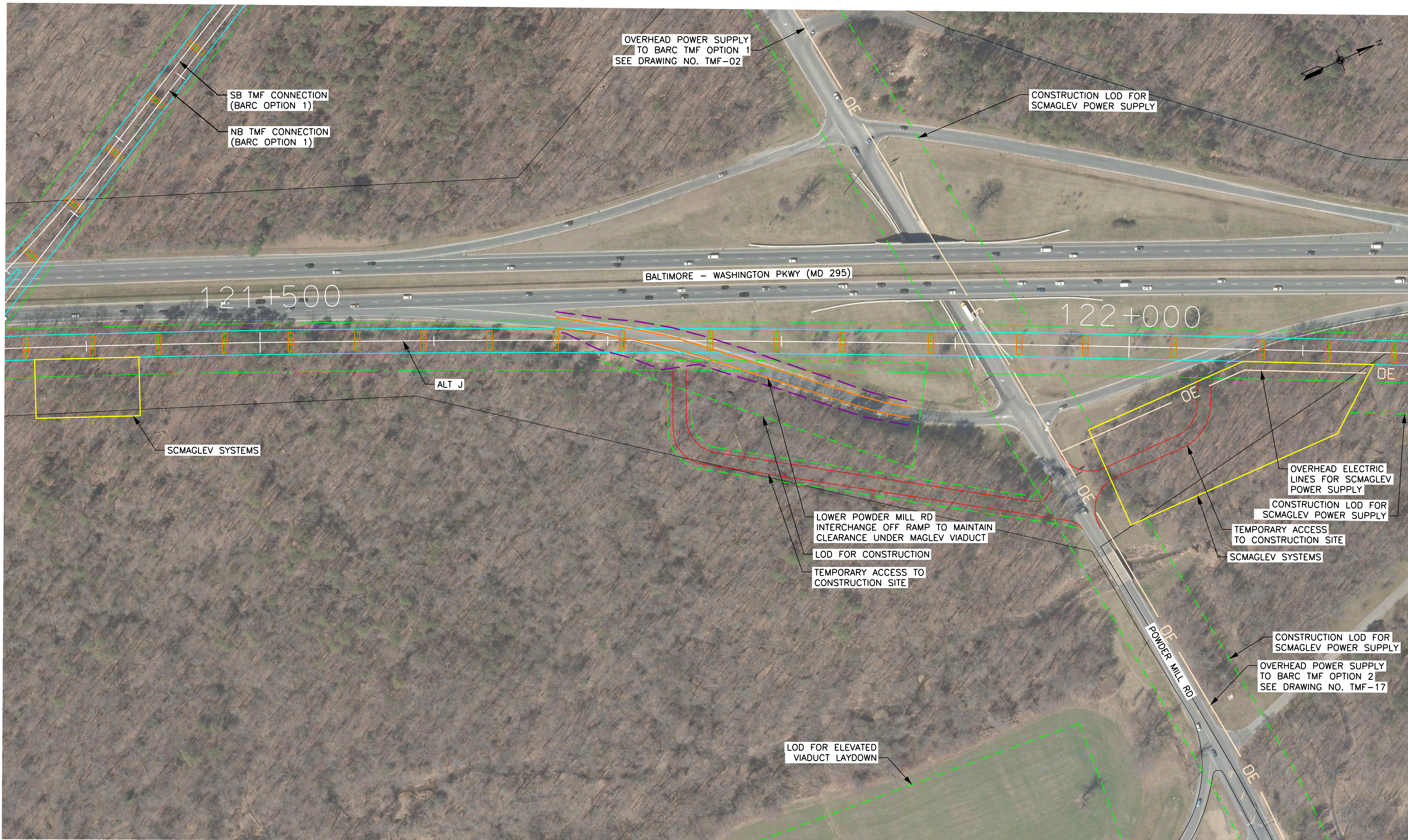


VERTICAL SCALE: NONE

BALTIMORE-WASHINGTON SCMAGLEV  
J1 ALIGNMENT  
SCMAGLEV SYSTEMS STA. 122+250

DATE: 6/10/2020  
DRAWING NO. F-14  
SHEET NO. -- OF --

Printed By USM0882788 p:\high-eas2\pw\_bentley.com\high-eas2-pw-10\Documents\Transportation\_Eng\_BU\The NORTH-EAST MAGLEV\VEIS\Technical\Baltimore - DC\CADD\Cutsheets\DEIS - Facilities\_DEIS.dgn



SB TMF CONNECTION  
(BARC OPTION 1)

NB TMF CONNECTION  
(BARC OPTION 1)

OVERHEAD POWER SUPPLY  
TO BARC TMF OPTION 1  
SEE DRAWING NO. TMF-02

CONSTRUCTION LOD FOR  
SCMAGLEV POWER SUPPLY

BALTIMORE - WASHINGTON PKWY (MD 295)

121+500

122+000

ALT J

SCMAGLEV SYSTEMS

LOWER POWDER MILL RD  
INTERCHANGE OFF RAMP TO MAINTAIN  
CLEARANCE UNDER MAGLEV VIADUCT  
LOD FOR CONSTRUCTION  
TEMPORARY ACCESS TO  
CONSTRUCTION SITE

OVERHEAD ELECTRIC  
LINES FOR SCMAGLEV  
POWER SUPPLY

CONSTRUCTION LOD FOR  
SCMAGLEV POWER SUPPLY

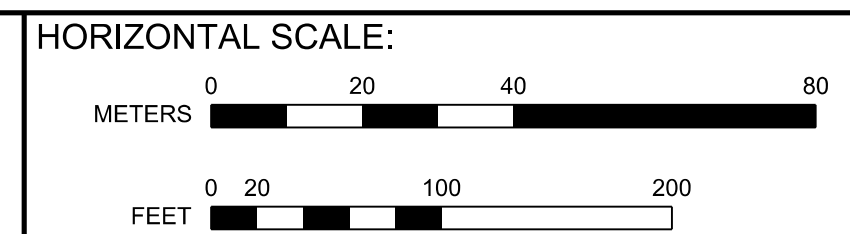
TEMPORARY ACCESS  
TO CONSTRUCTION SITE

SCMAGLEV SYSTEMS

CONSTRUCTION LOD FOR  
SCMAGLEV POWER SUPPLY

OVERHEAD POWER SUPPLY  
TO BARC TMF OPTION 2  
SEE DRAWING NO. TMF-17

LOD FOR ELEVATED  
VIADUCT LAYDOWN

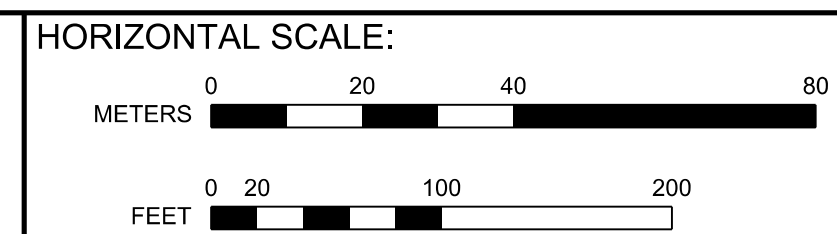
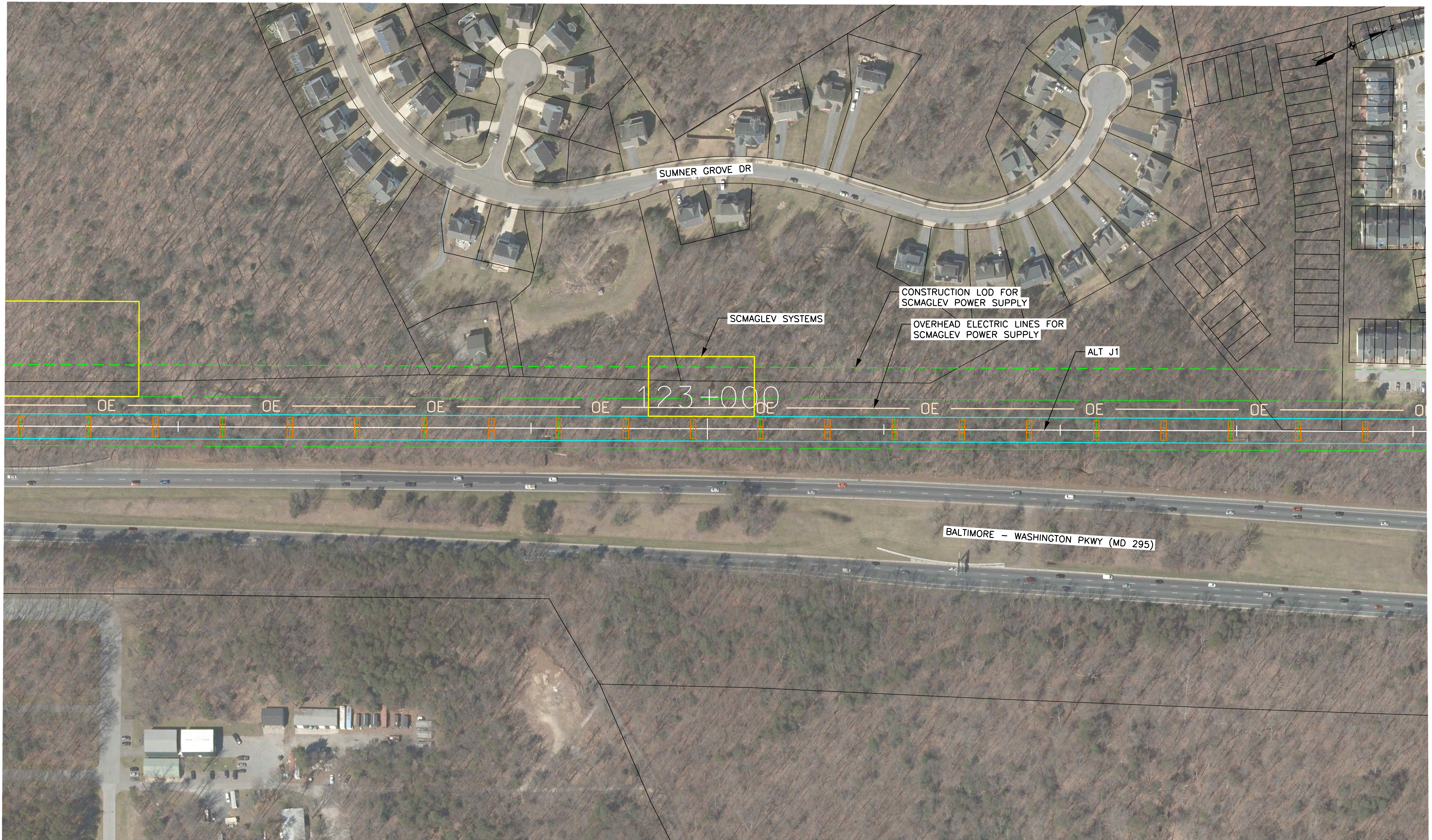


VERTICAL SCALE:  
NONE

BALTIMORE-WASHINGTON SCMAGLEV  
J ALIGNMENT  
SCMAGLEV SYSTEMS STA. 121+400 AND STA. 122+100

DATE: 6/10/2020  
DRAWING NO. F-15  
SHEET NO. -- OF --

Printed By USM0882788 p:\high-eas2\pw\_bentley.com\high-eas2-pw-10\Documents\Transportation\_Eng\B\The NORTH-EAST MAGLEV\WEB\Technical\Baltimore - DC\CADD\Cutehees\DEIS - Facilities\_DEIS.dgn 6/10/2020



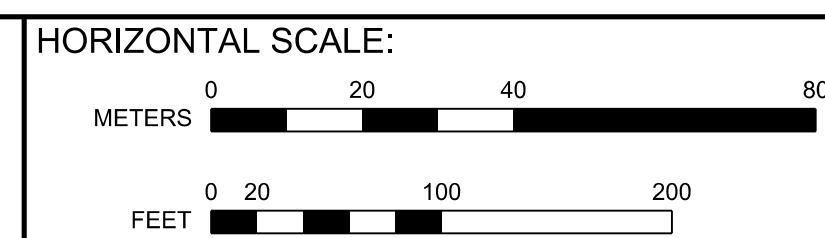
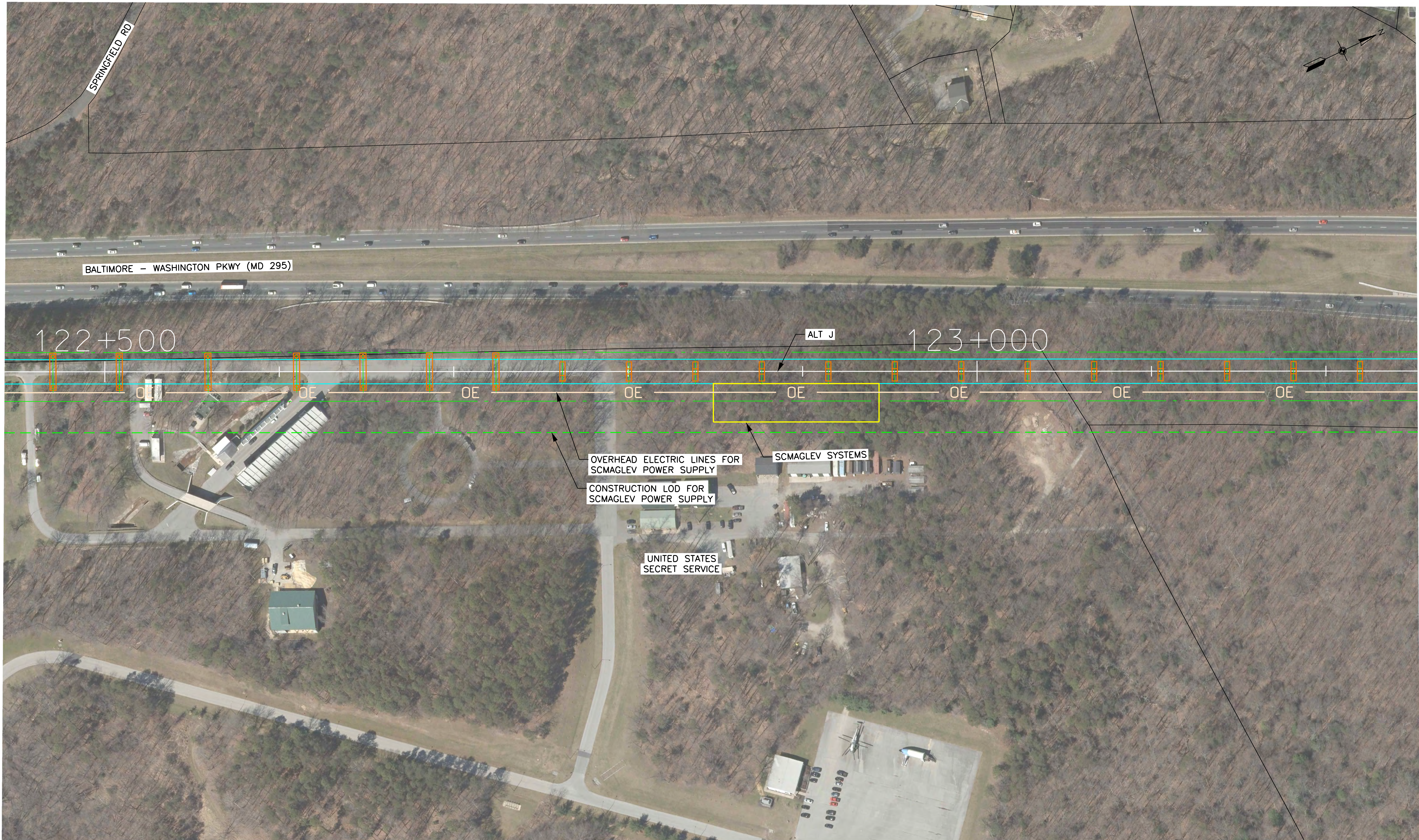
VERTICAL SCALE:  
NONE

BALTIMORE-WASHINGTON SCMAGLEV  
J1 ALIGNMENT  
SCMAGLEV SYSTEMS STA. 123+000

DATE: 6/10/2020  
DRAWING NO. F-16  
SHEET NO. -- OF --



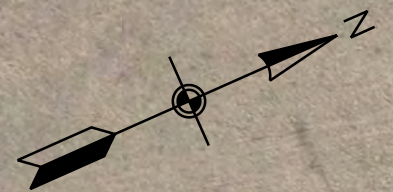
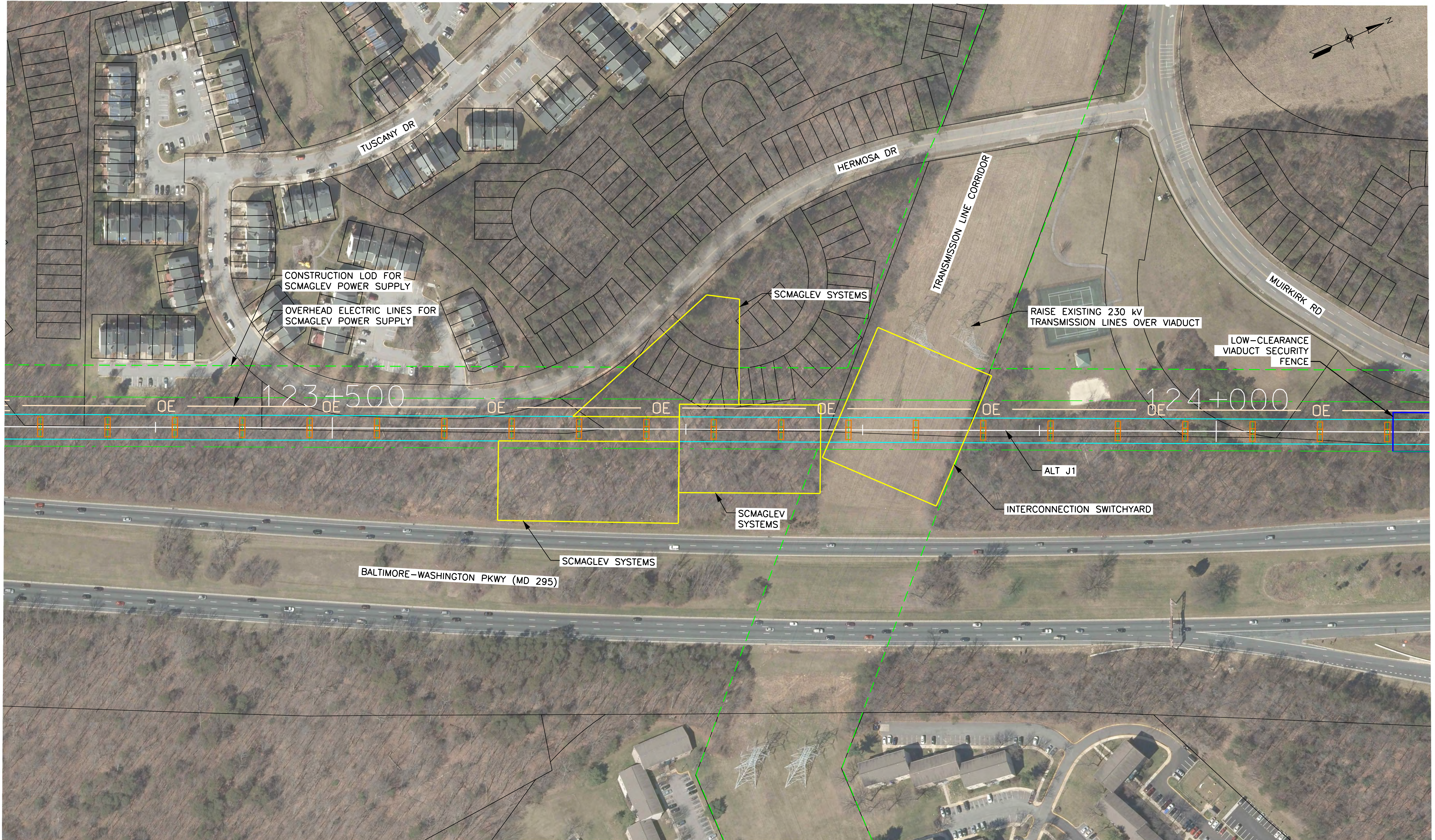
Printed By USM0882788 p:\high-eas2\pw\_bentley.com\high-eas2-pw-10\Documents\Transportation\_Eng\_BU\The NORTH-EAST MAGLEV\WEB\Technical\Baltimore - DC\CADD\Cutsheets\DEIS - Facilities\_DEIS.dgn 6/10/2020



VERTICAL SCALE:  
NONE

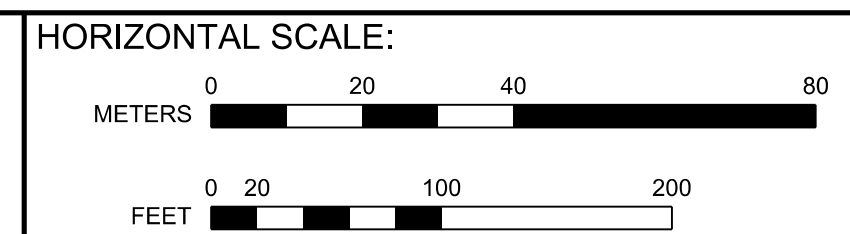
BALTIMORE-WASHINGTON SCMAGLEV  
J ALIGNMENT  
SCMAGLEV SYSTEMS STA. 122+900

DATE: 6/10/2020  
DRAWING NO. F-17  
SHEET NO. -- OF --



Printed By USMC882788 p:\high-eas2\pw\_bentley.com\high-eas2\pw-10\Documents\Transportation\Eng\B\The NORTH-EAST MAGLEV\WEB\Technical\Baltimore - DC\CADD\Cutehearts\DEIS - Facilities - DEIS.dgn

6/12/2020



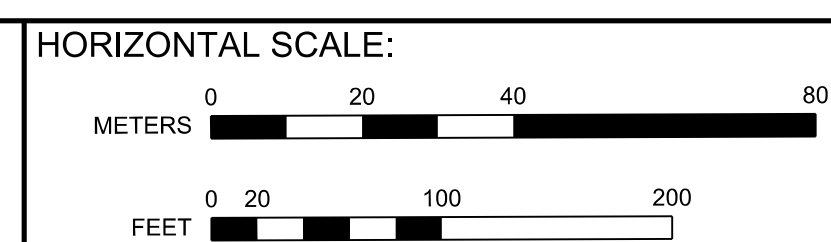
VERTICAL SCALE:  
NONE

BALTIMORE-WASHINGTON SCMAGLEV  
J1 ALIGNMENT  
SCMAGLEV SYSTEMS & SUBSTATION STA. 123+700

DATE:	6/12/2020
DRAWING NO.	F-18
SHEET NO.	-- OF --



Printed By USMC882788 p:\high-eus2\pw\_bentley.com\high-eus2\pw-10\Documents\Transportation\_Eng\BUTHE NORTH-EAST MAGLEV\WEB\Technical\Baltimore - DC\CADD\Cutsheets\DEIS - Facilities\_DEIS.dgn



VERTICAL SCALE:  
NONE

BALTIMORE-WASHINGTON SCMAGLEV  
J ALIGNMENT  
SCMAGLEV SYSTEMS STA. 123+600

DATE:	6/12/2020
DRAWING NO.:	F-19
SHEET NO.:	-- OF --



MATCHLINE SEE DRAWING NO. F-19

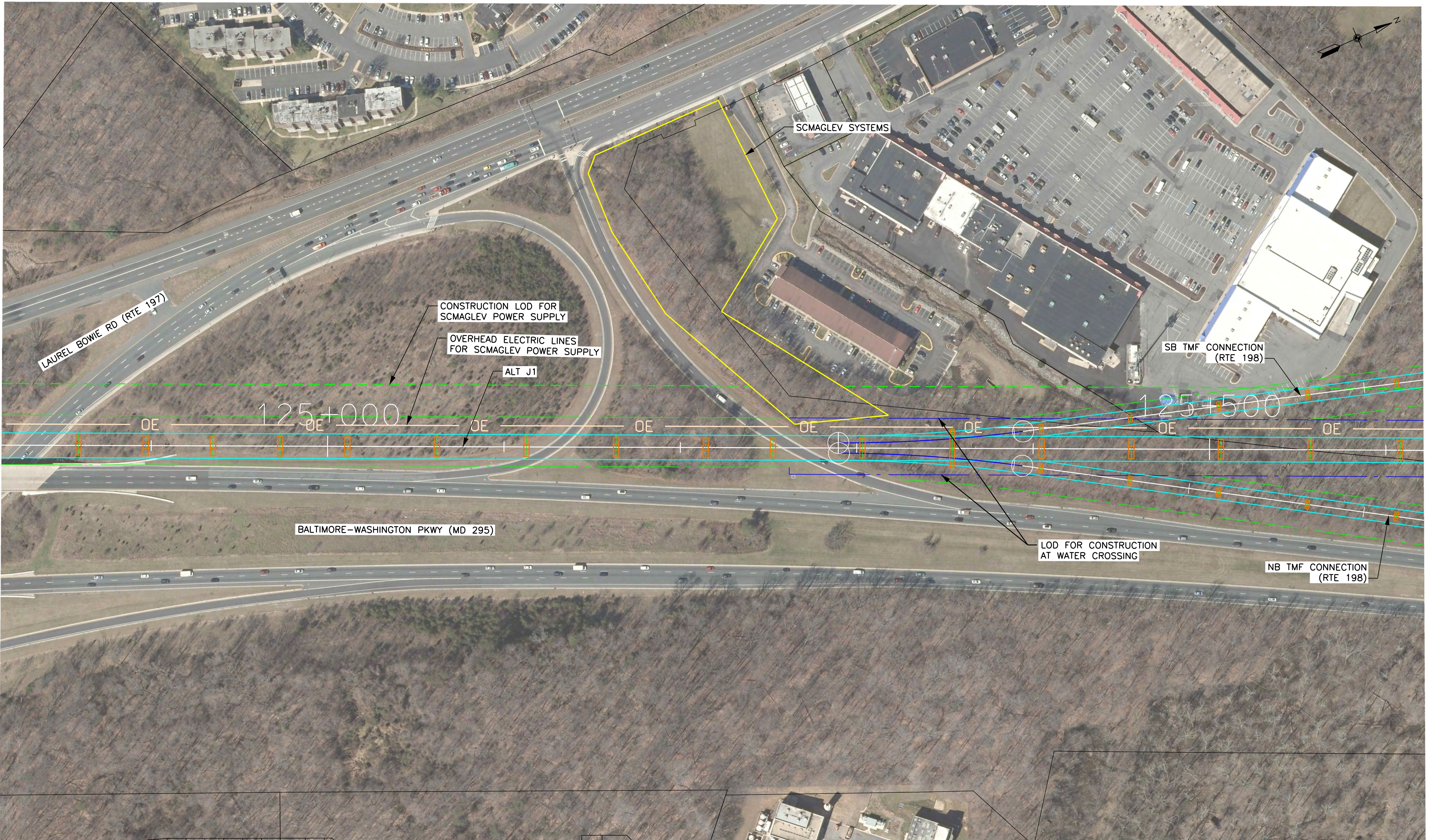


VERTICAL SCALE:

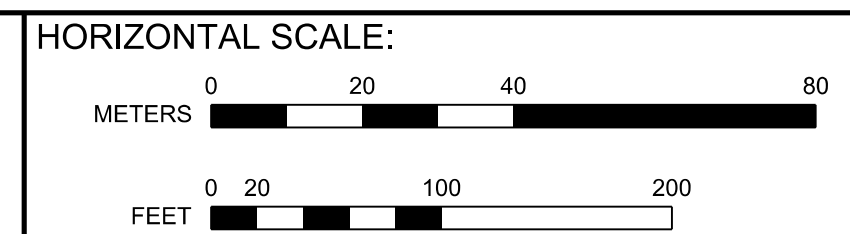
NONE

BALTIMORE-WASHINGTON SCMAGLEV  
J ALIGNMENT  
SCMAGLEV SYSTEMS & SUBSTATION STA. 124+200

DATE: 6/10/2020  
DRAWING NO. F-20  
SHEET NO. -- OF --



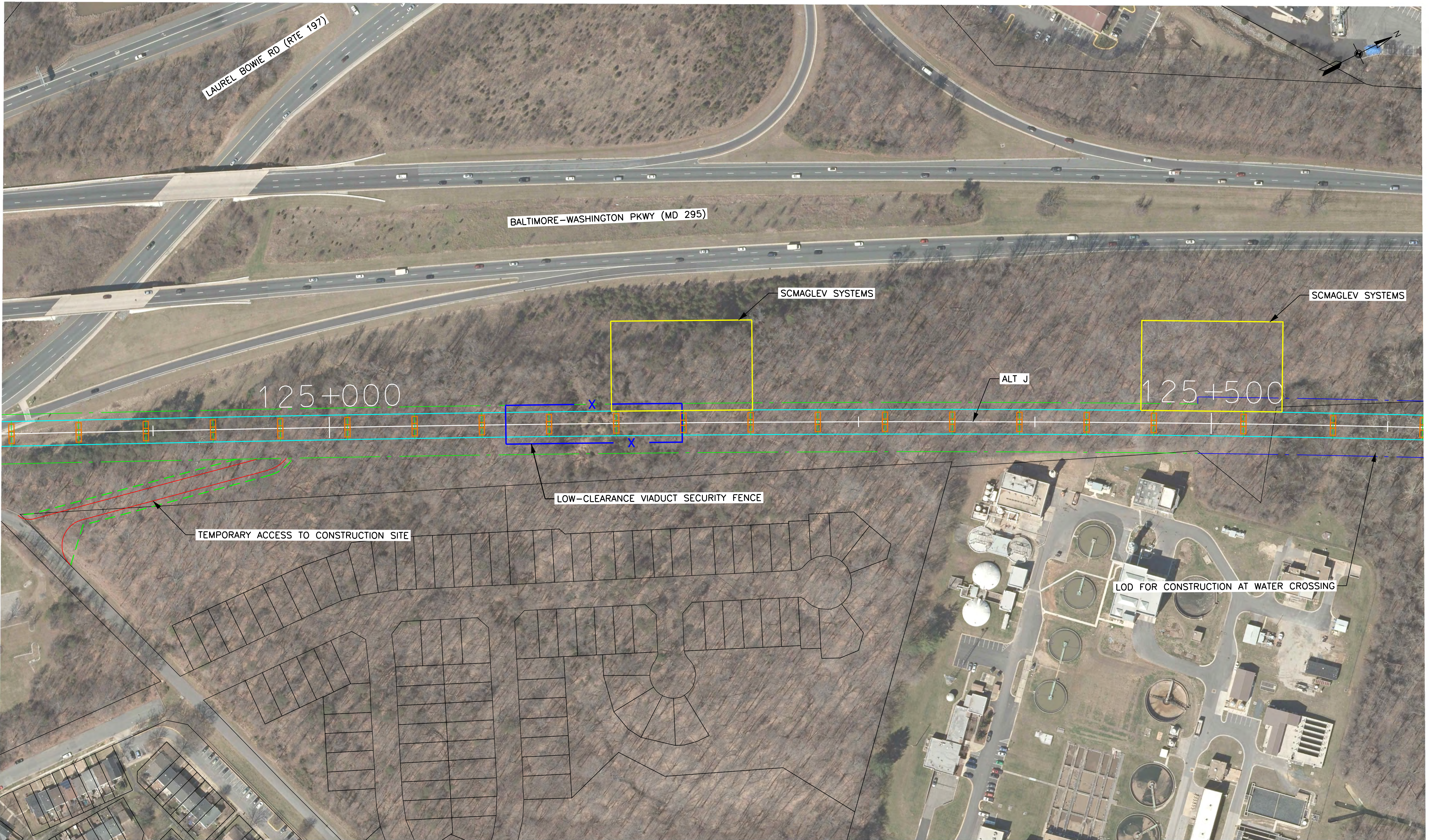
Printed By USMC882788 6/10/2020 p:\high-eas2-pw-bentley.com\high-eas2-pw-10\Documents\Transportation\Eng\B\The NORTH-EAST MAGLEV\WEB\Technical\Baltimore - DC\CADD\Cutehees\DEIS - Facilities\_DEIS.dgn



VERTICAL SCALE:  
NONE

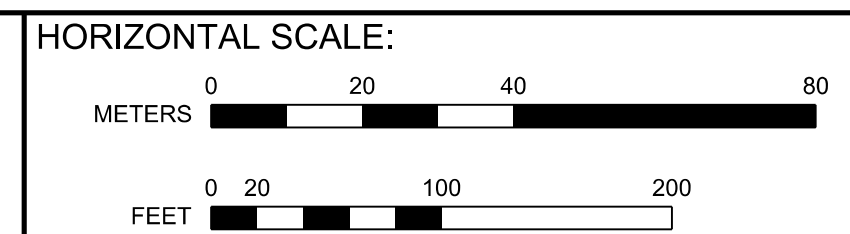
BALTIMORE-WASHINGTON SCMAGLEV  
J1 ALIGNMENT  
SCMAGLEV SYSTEMS STA. 125+300

DATE: 6/10/2020  
DRAWING NO. F-21  
SHEET NO. -- OF --



Printed By USMC882788 p:\high-eas2\pw\_bentley.com\high-eas2-pw-10\Documents\Transportation\_Eng\BUThe NORTH-EAST MAGLEV\VE\B1\Technical\Baltimore - DC\CADD\Cutehees\DEIS - Facilities\_DEIS.dgn

6/12/2020



VERTICAL SCALE:  
NONE

BALTIMORE-WASHINGTON SCMAGLEV  
J ALIGNMENT  
SCMAGLEV SYSTEMS STA. 125+500

DATE: 6/12/2020  
DRAWING NO. F-22  
SHEET NO. -- OF --