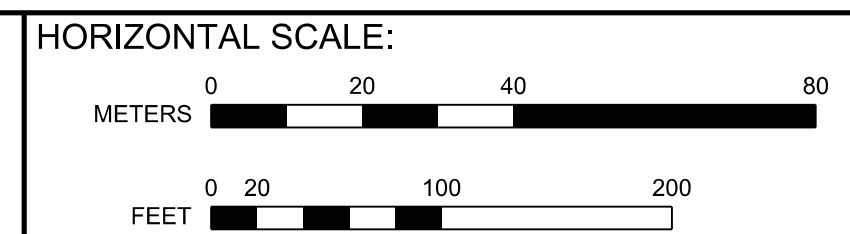




6/10/2020 Printed By USM0882788 p:\high-eas2\pw_bentley.com\high-eas2\pw-10\Documents\Transportation_Eng\BUTHE NORTH-EAST MAGLEV\VE\B1\Technical\Baltimore - DC\CADD\Cutehees\DEIS - Facilities_DEIS.dgn



VERTICAL SCALE:
NONE

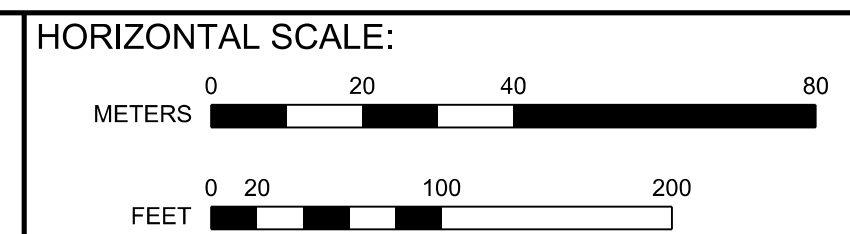
BALTIMORE-WASHINGTON SCMAGLEV
J1 ALIGNMENT
SCMAGLEV SYSTEMS STA. 126+300

DATE: 6/10/2020
DRAWING NO. F-23
SHEET NO. -- OF --



Printed By: USMC8827288 p:\high-eas2-pw-bentley.com\high-eas2-pw-10\Documents\Transportation_Eng_B\The NORTH-EAST MAGLEV\VEIS\Technical\Baltimore - DC\CADD\Cutsheets\DEIS - Facilities_DEIS.dgn

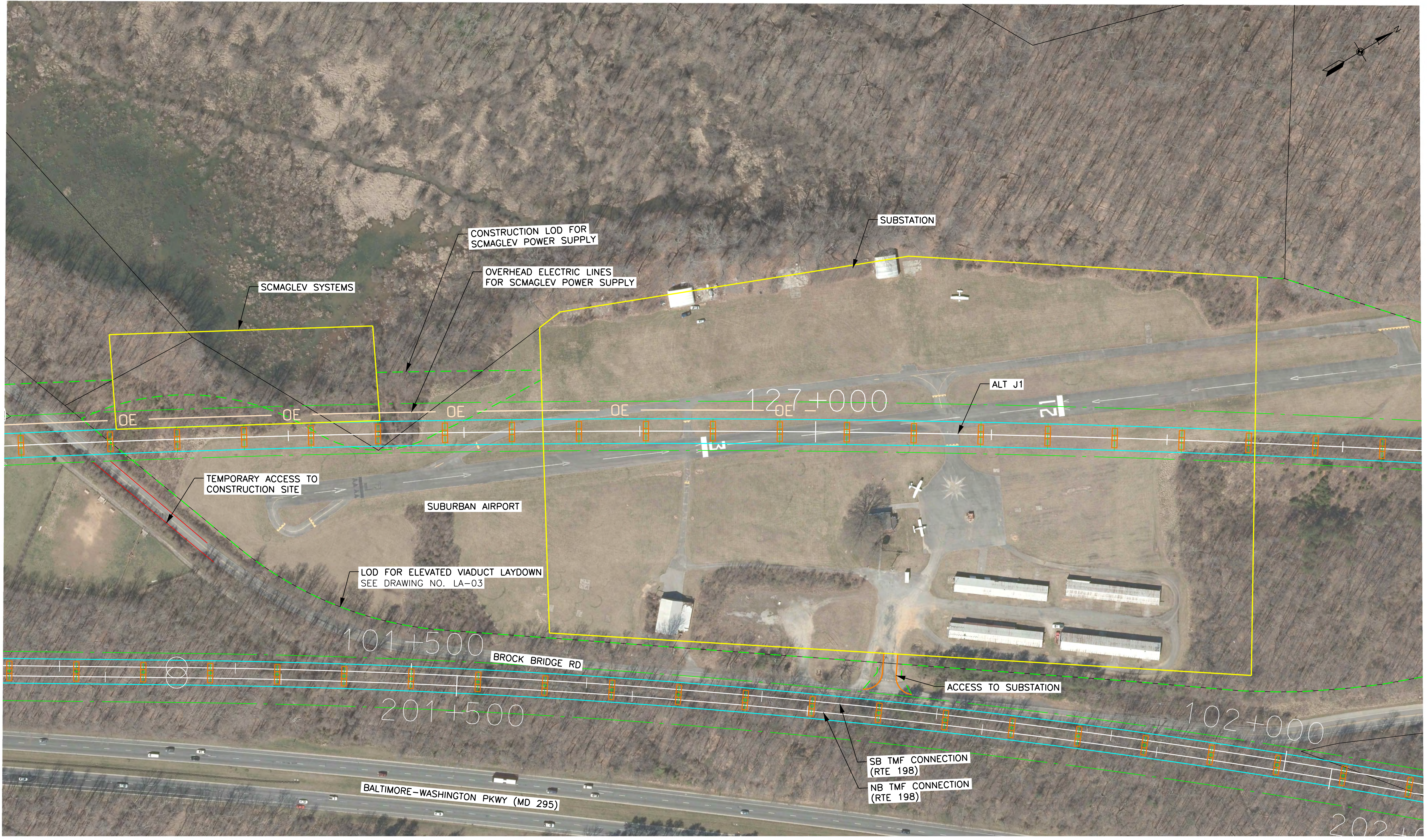
6/10/2020



VERTICAL SCALE:
NONE

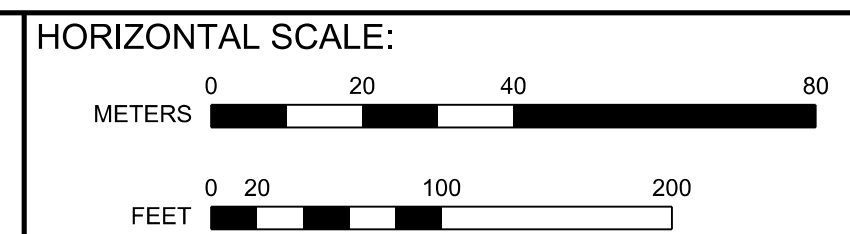
BALTIMORE-WASHINGTON SCMAGLEV
J ALIGNMENT
SCMAGLEV SYSTEMS STA. 126+550

DATE:	6/10/2020
DRAWING NO.:	F-24
SHEET NO.:	-- OF --



Printed By USMC882788 p:\high-eas2\pw_bentley.com\high-eas2\pw-10\Documents\Transportation\Eng\BUT\The NORTHHEAST MAGLEV\WEB\Technical\Baltimore - DC\CADD\Cutehearts\DEIS - Facilities_DEIS.dgn

6/10/2020



VERTICAL SCALE:
NONE

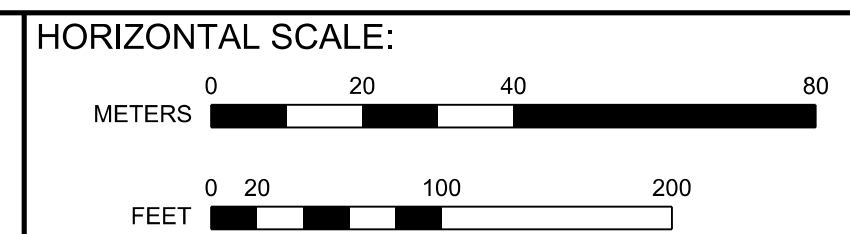
**BALTIMORE-WASHINGTON SCMAGLEV
J1 ALIGNMENT
SCMAGLEV SYSTEMS AND MOW FACILITY STA. 127+000**

DATE:	6/10/2020
DRAWING NO.	F-25
SHEET NO.	-- OF --



Printed By USMC882788 p:\high-eas2\pw_bentley.com\high-eas2-pw-10\Documents\Transportation_Eng\Baltimore-NORTHHEAST\MAGLEV\VEIS\Technical\Baltimore - DC\CADD\Cutehees\DEIS - Facilities_DEIS.dgn

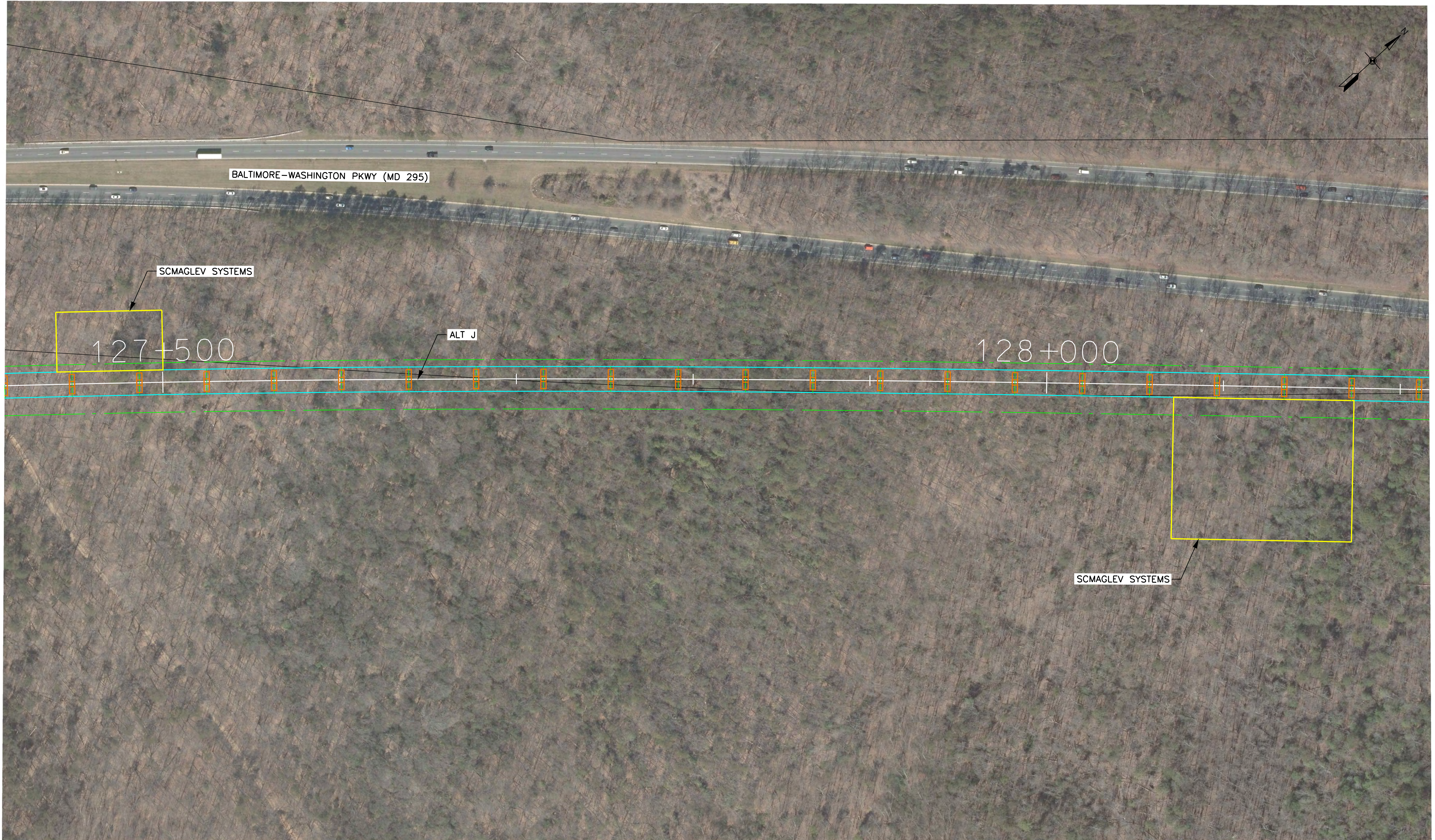
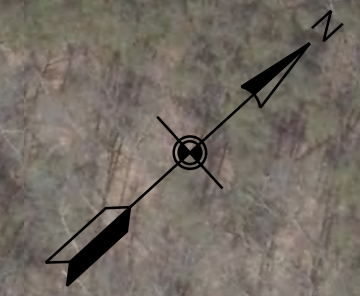
6/10/2020



VERTICAL SCALE:
NONE

BALTIMORE-WASHINGTON SCMAGLEV
J1 ALIGNMENT
SCMAGLEV SYSTEMS STA. 127+400

DATE: 6/10/2020
DRAWING NO. F-26
SHEET NO. -- OF --



BALTIMORE-WASHINGTON PKWY (MD 295)

SCMAGLEV SYSTEMS

127+500

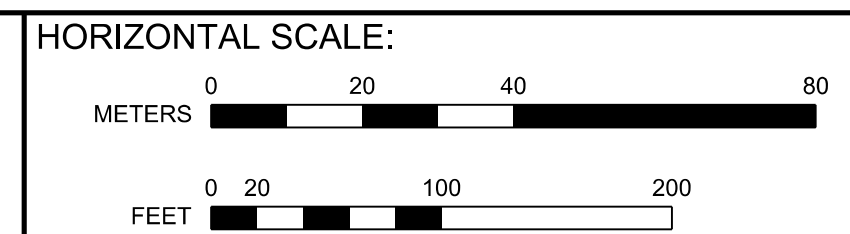
ALT J

128+000

SCMAGLEV SYSTEMS

Printed By USM0882788 p:\high-eas2\pw_bentley.com\high-eas2-pw-10\Documents\Transportation\Eng\B\The NORTH-EAST MAGLEV\WEB\Technical\Baltimore - DC\CADD\Cutsheets\DEIS - Facilities - DEIS.dgn

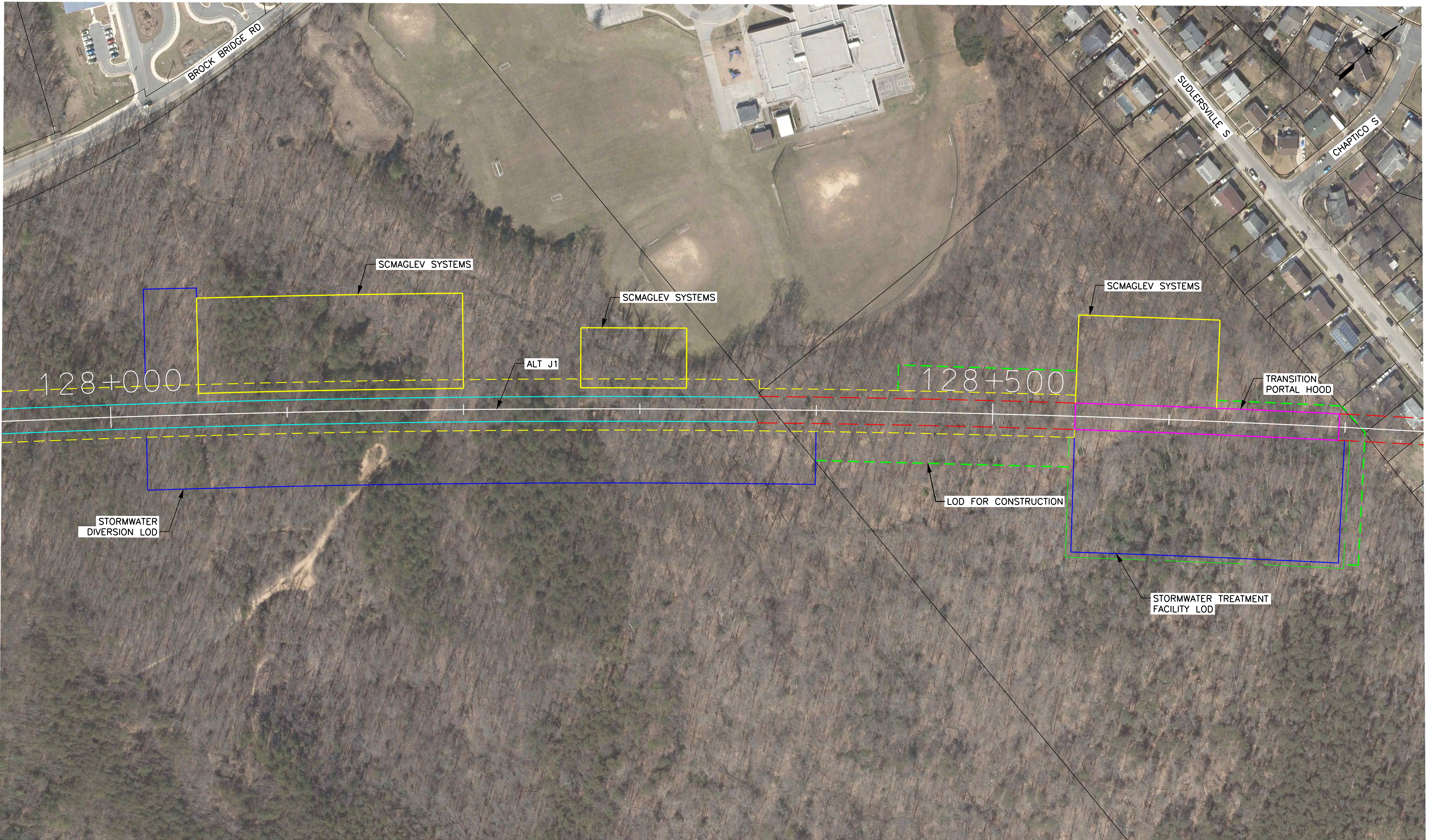
6/10/2020



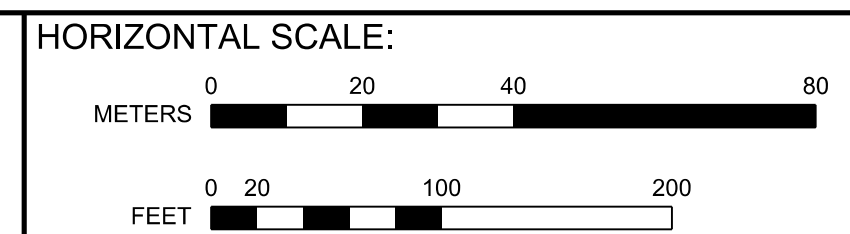
VERTICAL SCALE:
NONE

BALTIMORE-WASHINGTON SCMAGLEV
J ALIGNMENT
SCMAGLEV SYSTEMS STA. 127+450 AND STA. 128+100

DATE:	6/10/2020
DRAWING NO.	F-27
SHEET NO.	-- OF --



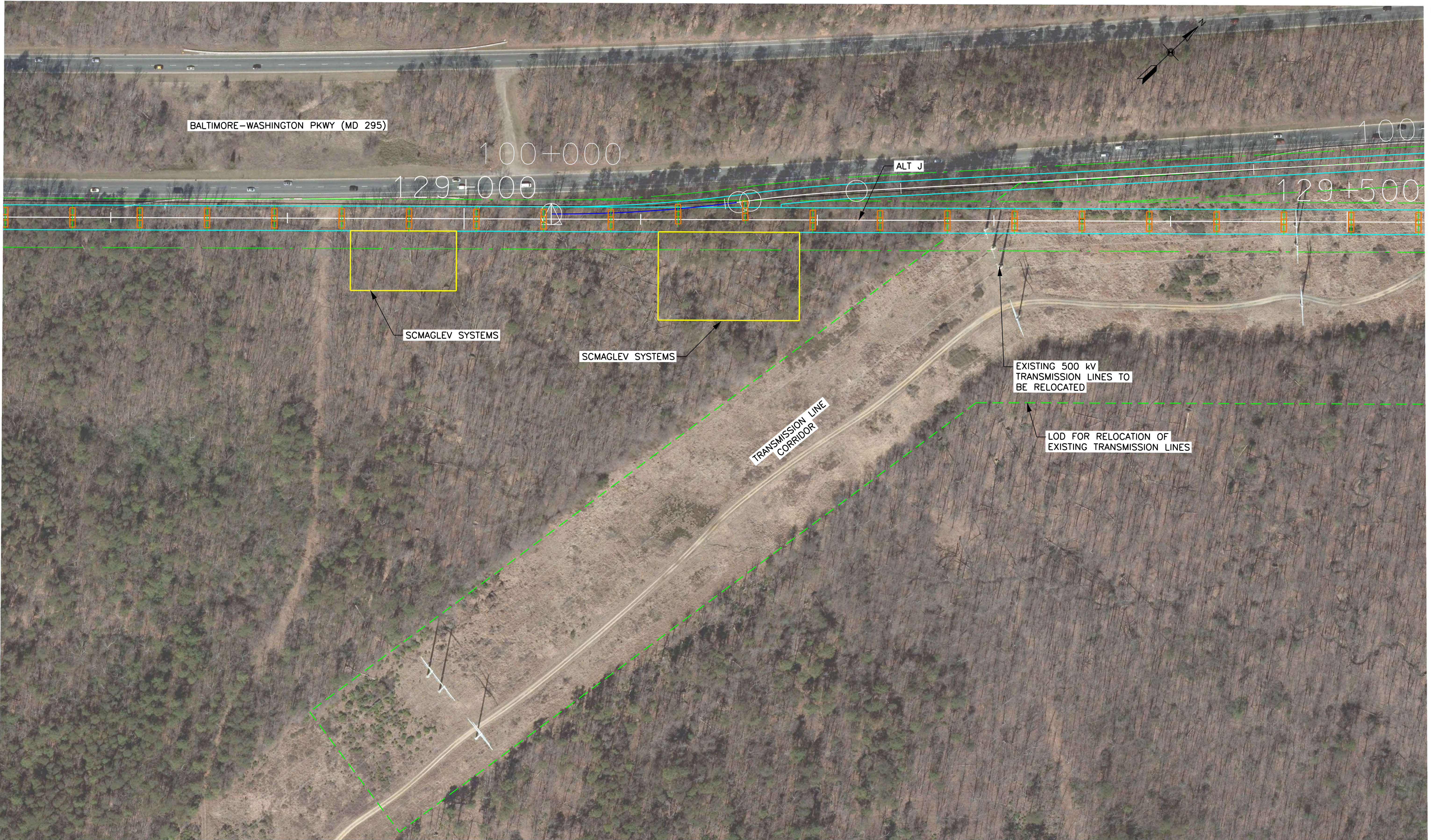
Printed By USM0882788 p:\high-eas2\pw_bentley.com\high-eas2\pw-10\Documents\Transportation_Eng\B\The NORTH-EAST MAGLEV\WEB\Technical\Baltimore - DC\CADD\Cutehees\DEIS_Facilities_DEIS.dgn



VERTICAL SCALE:
NONE

BALTIMORE-WASHINGTON SCMAGLEV
J1 ALIGNMENT
SCMAGLEV SYS STA. 128+100 / 128+300 / 128+600

DATE: 6/10/2020
DRAWING NO. F-28
SHEET NO. -- OF --



BALTIMORE-WASHINGTON PKWY (MD 295)

100+000

129+000

ALT J

129+500

SCMAGLEV SYSTEMS

SCMAGLEV SYSTEMS

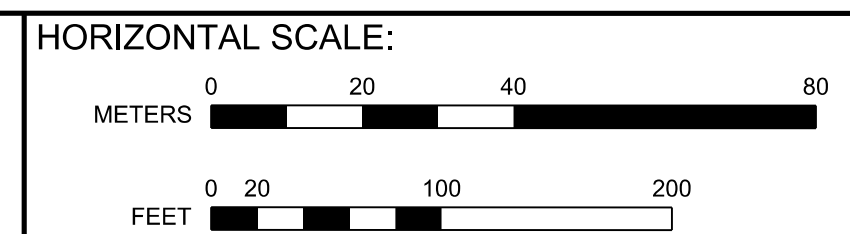
TRANSMISSION LINE CORRIDOR

EXISTING 500 kV TRANSMISSION LINES TO BE RELOCATED

LOD FOR RELOCATION OF EXISTING TRANSMISSION LINES

Printed By: USMC882788 p:\high-eas2\pw_bentley.com\high-eas2\pw-10\Documents\Transportation_Eng\B\The NORTHHEAST MAGLEV\WEB\Technical\Baltimore - DC\CADD\Cutsheets\DEIS_Facilities_DEIS.dgn

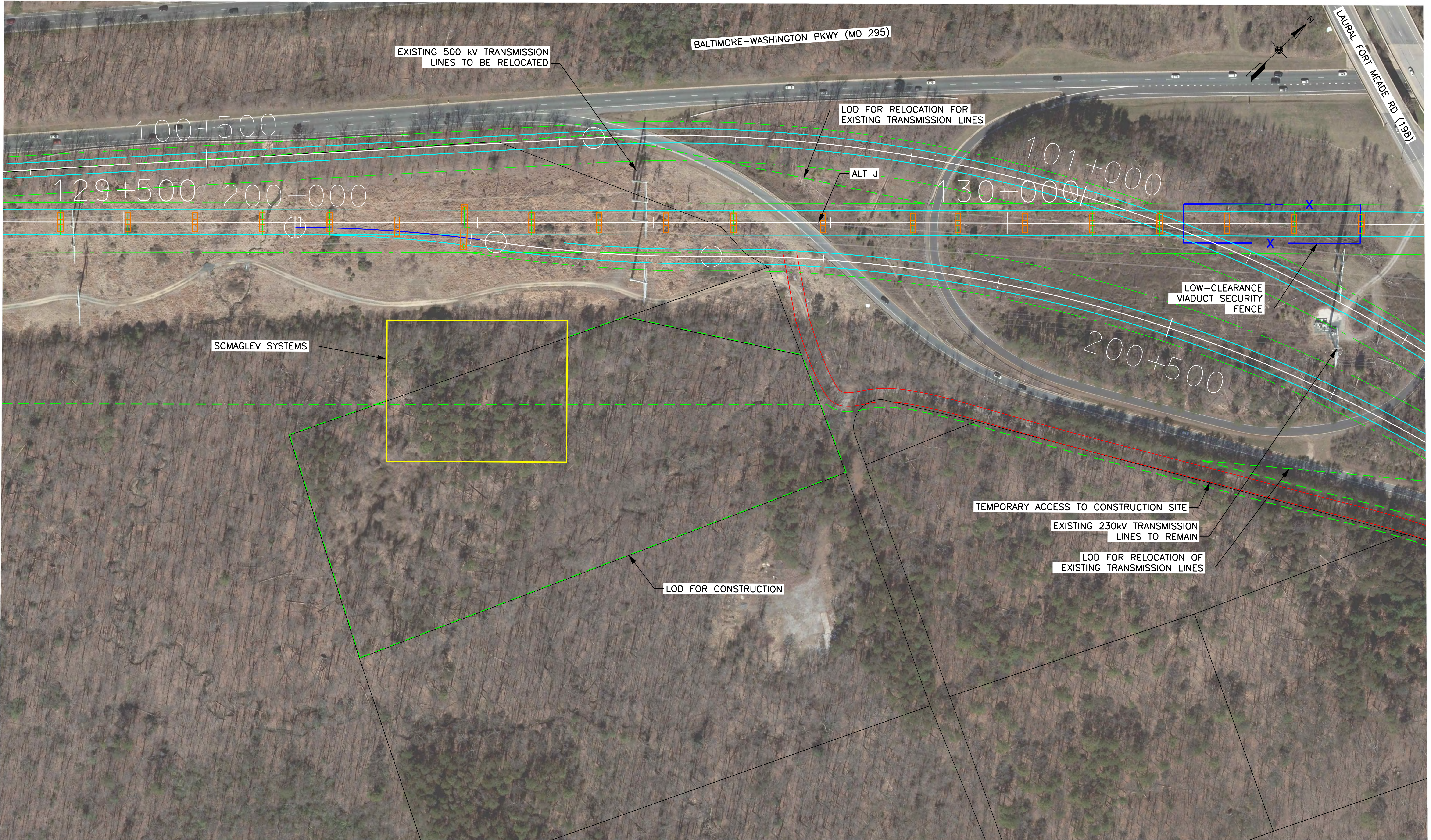
6/10/2020



VERTICAL SCALE:
NONE

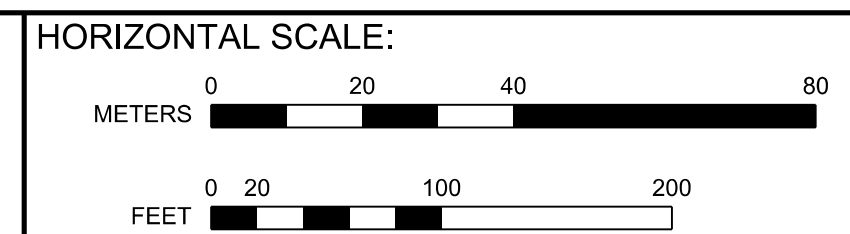
BALTIMORE-WASHINGTON SCMAGLEV
J ALIGNMENT
SCMAGLEV SYSTEMS STA. 128+950 & STA. 129+150

DATE: 6/10/2020
DRAWING NO. F-29
SHEET NO. -- OF --



Printed By: USMC882788 p:\high-eas2\pw_bentley.com\high-eas2\pw-10\Documents\Transportation\Eng\BUTHE NORTH-EAST MAGLEV\WEB\Technical\Baltimore - DC\CADD\Cutsheets\DEIS - Facilities_DEIS.dgn

6/12/2020



VERTICAL SCALE:
NONE

BALTIMORE-WASHINGTON SCMAGLEV
J ALIGNMENT
SCMAGLEV SYSTEMS STA. 129+700

DATE: 6/12/2020
DRAWING NO. F-30
SHEET NO. -- OF --

MATCHLINE SEE DRAWING NO. F-32



BALTIMORE-WASHINGTON PKWY (MD 295)

RAISE 500 kV TRANSMISSION LINES OVER VIADUCT

SCMAGLEV SYSTEMS

131+000

ALT J

RAISE 230 kV TRANSMISSION LINES OVER VIADUCT

SCMAGLEV SYSTEMS

SCMAGLEV SYSTEMS

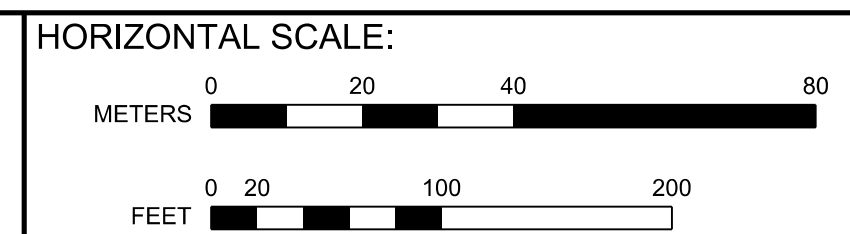
TEMPORARY ACCESS TO CONSTRUCTION SITE

EXISTING 500 kV TRANSMISSION LINES TO BE RELOCATED

LOD FOR RELOCATIONS OF EXISTING TRANSMISSION LINES

RELOCATED OLD PORTLAND RD SEE DRAWING NO. TMF-30

Printed By USMC882788 p:\high-eas2\pw_bentley.com\high-eas2-pw-10\Documents\Transportation_Eng\B\The NORTH-EAST MAGLEV\WEB\Technical\Baltimore - DC\CADD\Cutsheets\DEIS_Facilities_DEIS.dgn 6/10/2020



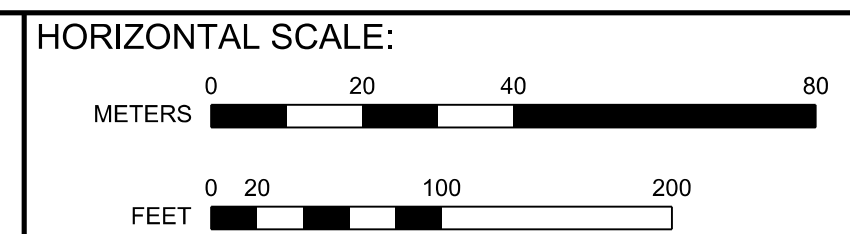
VERTICAL SCALE:
NONE

BALTIMORE-WASHINGTON SCMAGLEV
J ALIGNMENT
SCMAGLEV SYSTEMS STA. 131+000

DATE:	6/10/2020
DRAWING NO.:	F-31
SHEET NO.:	-- OF --



MATCHLINE SEE DRAWING NO. F-31

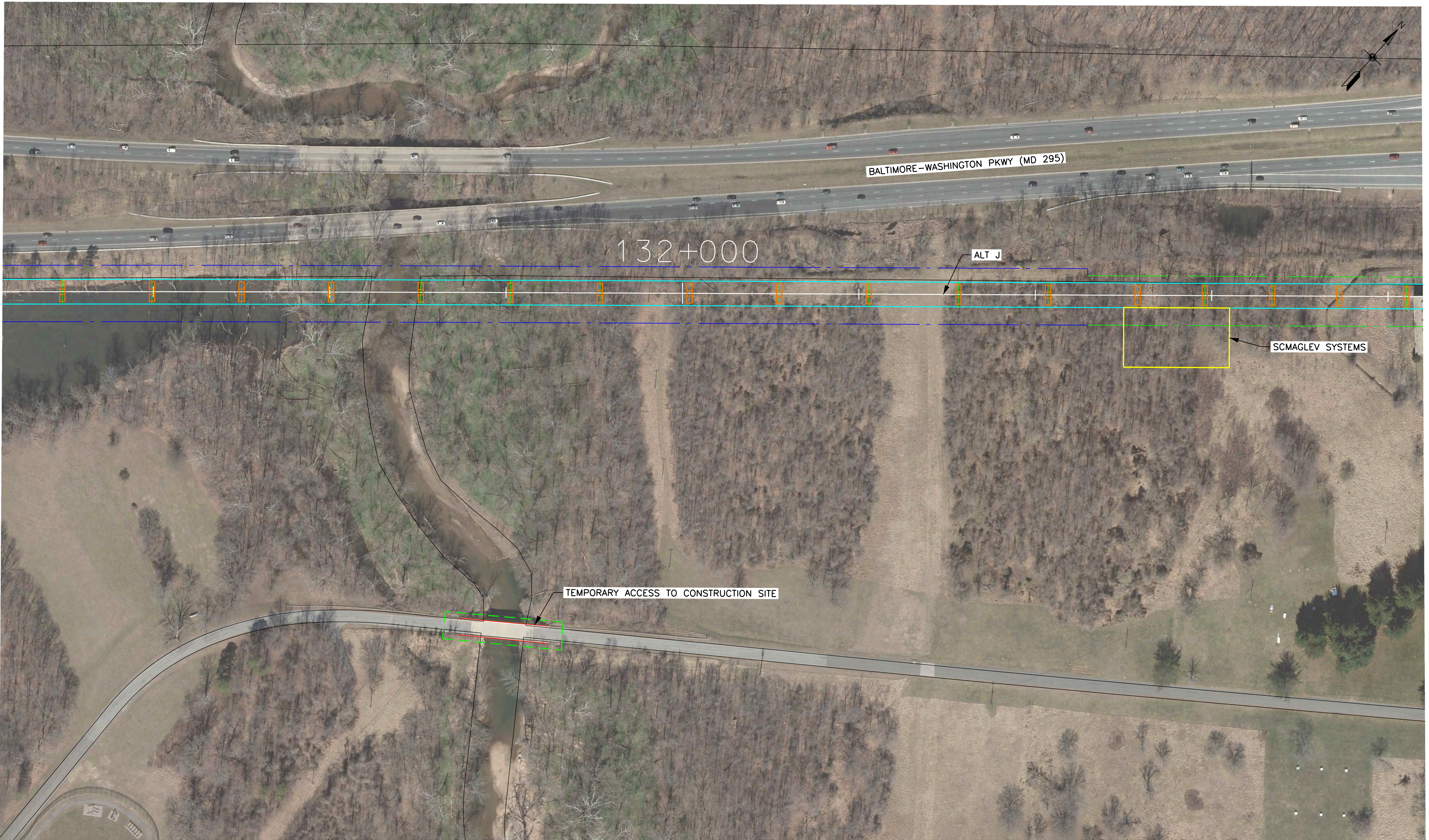


VERTICAL SCALE:
NONE

BALTIMORE-WASHINGTON SCMAGLEV
J ALIGNMENT
SCMAGLEV SYSTEMS STA. 131+000

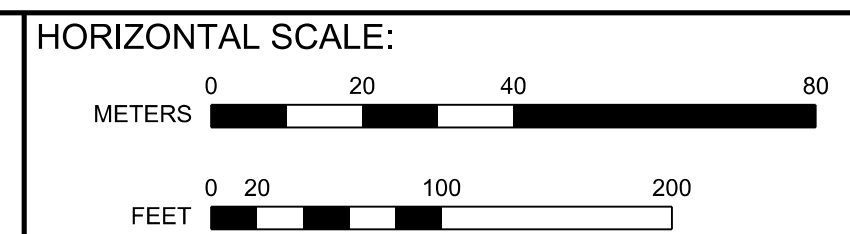
DATE:	6/10/2020
DRAWING NO.:	F-32
SHEET NO.:	-- OF --

6/10/2020 Printed By USM0882788 p:\high-eas2\pw_bentley.com\high-eas2\pw-10\Documents\Transportation_Eng\B\The NORTH-EAST MAGLEV\WEB\Technical\Baltimore - DC\CADD\Cutsheets\DEIS_Facilities_DEIS.dgn



Printed By USMC882788 p:\high-eas2\pw_bentley.com\high-eas2\pw-10\Documents\Transportation\Eng\B\The NORTH-EAST MAGLEV\VEIS\Technical\Baltimore - DC\CADD\Cutsheets\DEIS\Facilities_DEIS.dgn

6/10/2020

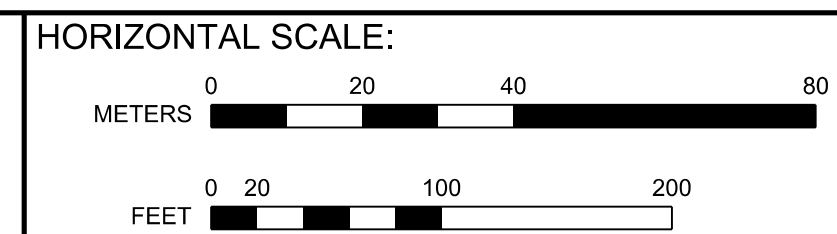


VERTICAL SCALE:
NONE

BALTIMORE-WASHINGTON SCMAGLEV
J ALIGNMENT
SCMAGLEV SYSTEMS STA. 131+900

DATE:	6/10/2020
DRAWING NO.	F-33
SHEET NO.	-- OF --

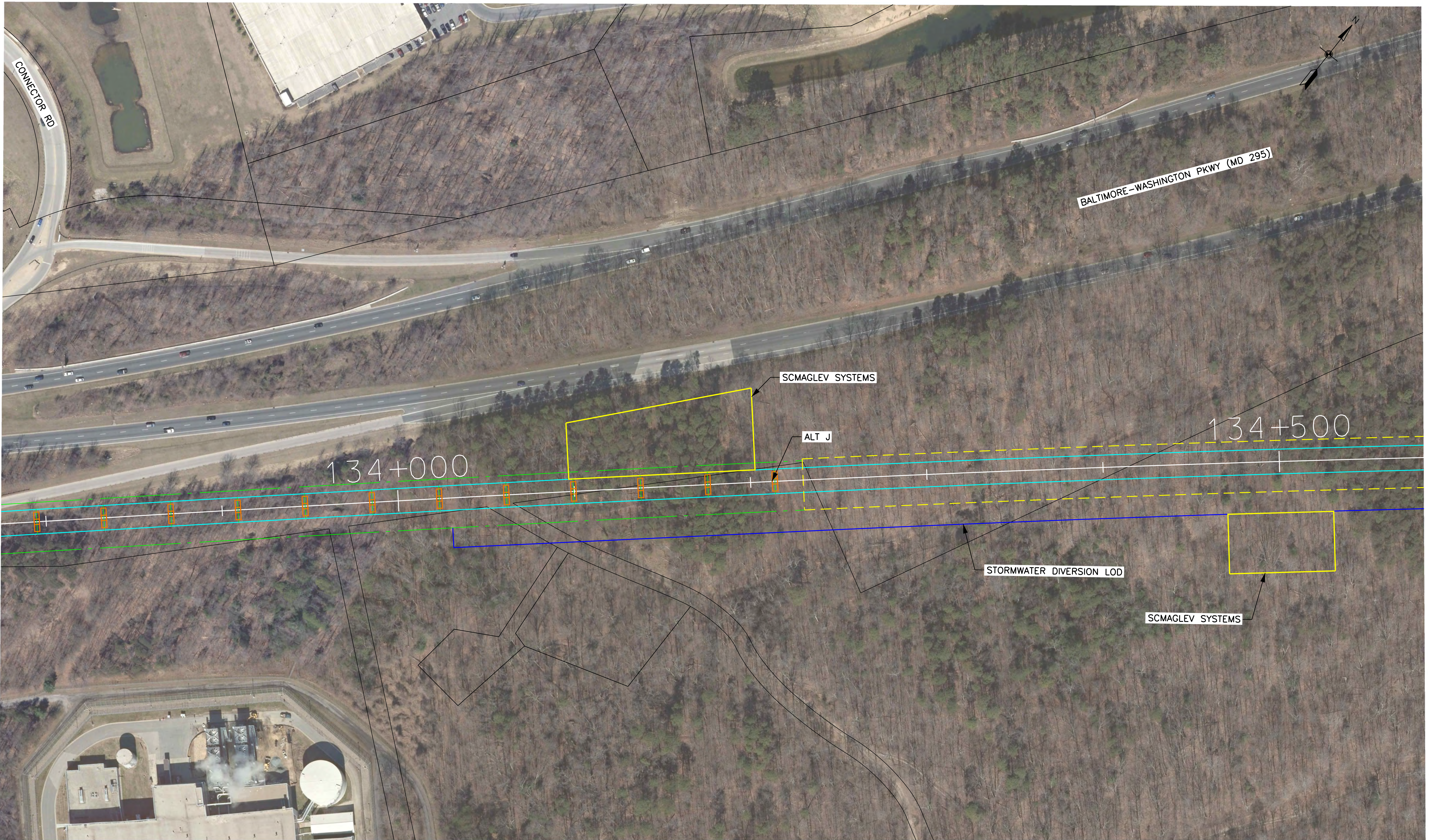
Printed By USMC882788 p:\high-eas2\pw_bentley.com\high-eas2-pw-10\Documents\Transportation_Eng_BU\The NORTH-EAST MAGLEV\VE\B1\Technical\Baltimore - DC\CADD\Cutsheets\DEIS - Facilities_DEIS.dgn 6/10/2020



VERTICAL SCALE:
NONE

BALTIMORE-WASHINGTON SCMAGLEV
J ALIGNMENT
SCMAGLEV SYSTEMS STA. 133+600

DATE: 6/10/2020
DRAWING NO. F-34
SHEET NO. -- OF --



CONNECTOR RD

BALTIMORE-WASHINGTON PKWY (MD 295)

134+000

134+500

SCMAGLEV SYSTEMS

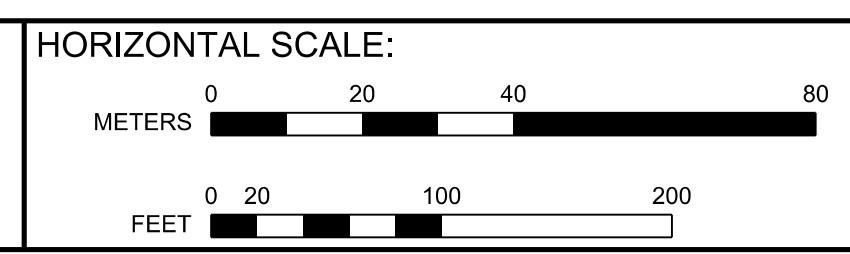
ALT J

STORMWATER DIVERSION LOD

SCMAGLEV SYSTEMS

Printed By USMC882788 p:\high-eas2\pw_bentley.com\high-eas2-pw-10\Documents\Transportation_Eng_BUT\The NORTH-EAST MAGLEV\Technical\Baltimore - DC\CADD\Cutsheets\DEIS - Facilities_DEIS.dgn

6/12/2020

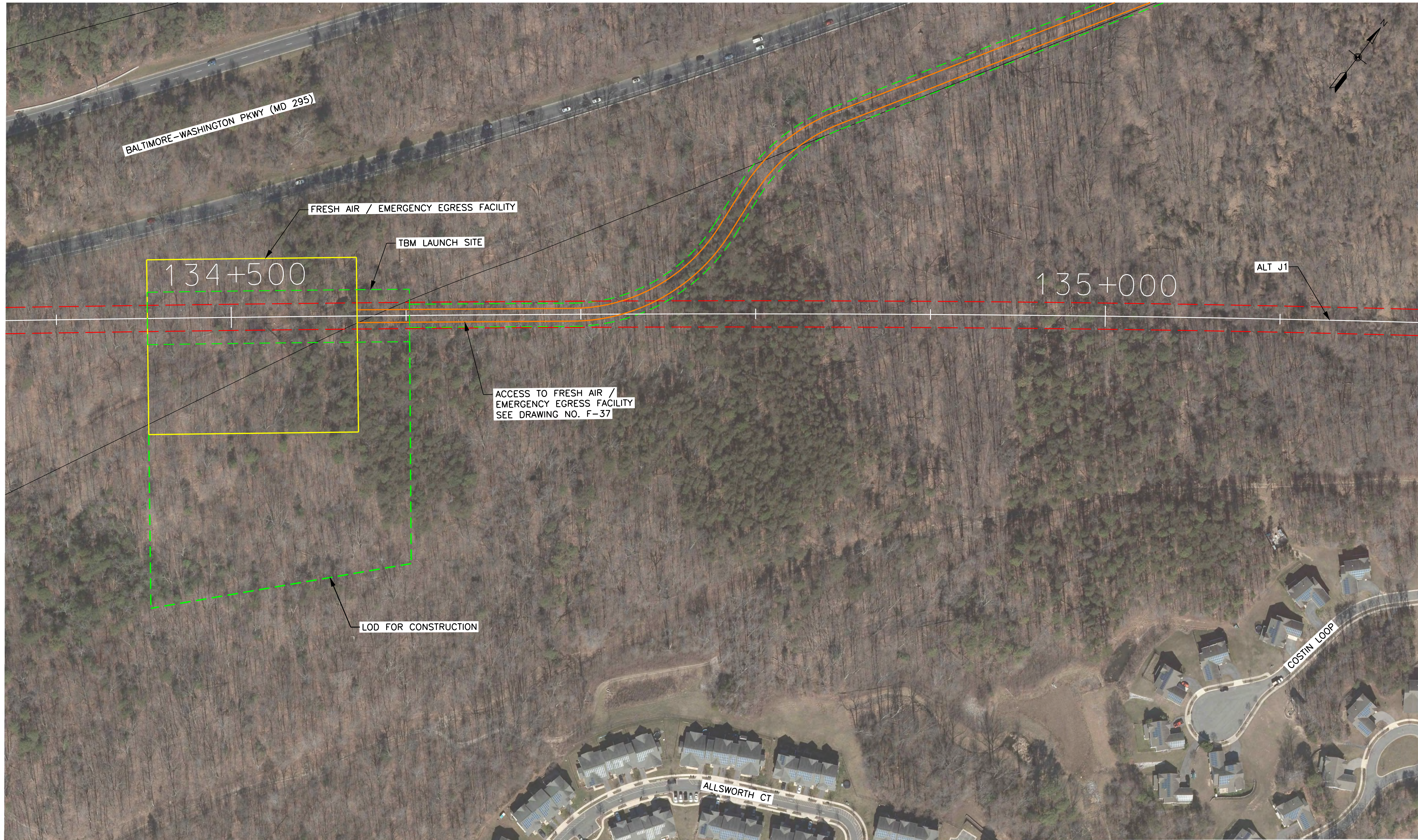


VERTICAL SCALE:
NONE

BALTIMORE-WASHINGTON SCMAGLEV
J ALIGNMENT
SCMAGLEV SYSTEMS STA. 134+100 & STA. 134+500

DATE: 6/12/2020
DRAWING NO. F-35
SHEET NO. -- OF --

Printed By USMC882788 p:\high-eas2\pw_bentley.com\high-eas2-pw-10\Documents\Transportation_Eng_BUT\The NORTHHEAST\MAGLEV\WEB\Technical\Baltimore - DC\CADD\Cutsheets\DEIS_Facilities_DEIS.dgn



BALTIMORE-WASHINGTON PKWY (MD 295)

FRESH AIR / EMERGENCY EGRESS FACILITY

TBM LAUNCH SITE

134+500

135+000

ALT J1

ACCESS TO FRESH AIR / EMERGENCY EGRESS FACILITY SEE DRAWING NO. F-37

LOD FOR CONSTRUCTION

ALLSWORTH CT

COSTIN LOOP



VERTICAL SCALE:
NONE

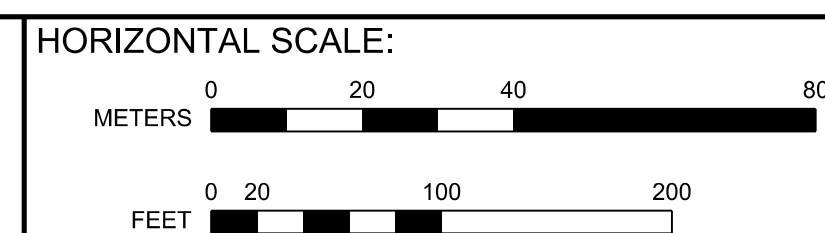
BALTIMORE-WASHINGTON SCMAGLEV
 J1 ALIGNMENT
 FRESH AIR / EMERGENCY EGRESS FACILITY STA. 134+500

DATE: 6/10/2020
 DRAWING NO. F-36
 SHEET NO. -- OF --



Printed By USM6882788 p:\high-eas2\pw_bentley.com\high-eas2-pw-10\Documents\Transportation_Eng\BUTHE NORTHHEAST\MAGLEV\VEIS\Technical\Baltimore - DC\CADD\Cutsheets\DEIS_Facilities_DEIS.dgn

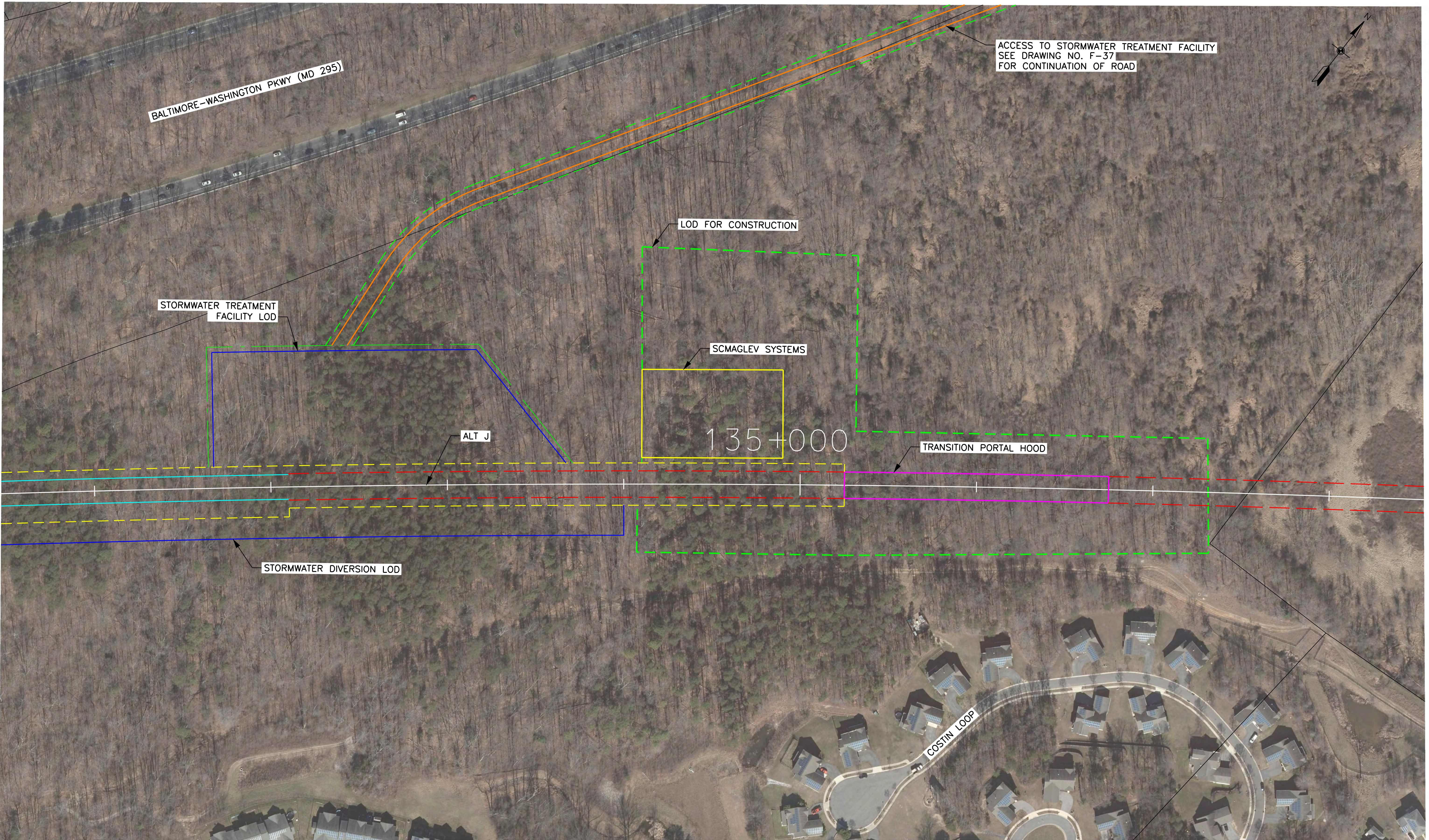
6/10/2020



VERTICAL SCALE:
NONE

BALTIMORE-WASHINGTON SCMAGLEV
J1 ALIGNMENT
FRESH AIR / EMERGENCY EGRESS FACILITY STA. 134+500

DATE: 6/10/2020
DRAWING NO. F-37
SHEET NO. -- OF --



ACCESS TO STORMWATER TREATMENT FACILITY
SEE DRAWING NO. F-37
FOR CONTINUATION OF ROAD

BALTIMORE-WASHINGTON PKWY (MD 295)

STORMWATER TREATMENT FACILITY LOD

LOD FOR CONSTRUCTION

SCMAGLEV SYSTEMS

135+000

TRANSITION PORTAL HOOD

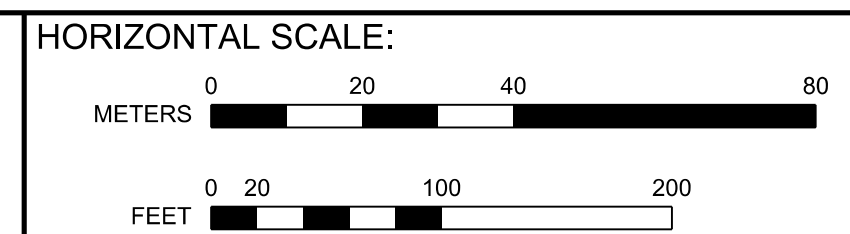
ALT J

STORMWATER DIVERSION LOD

COSTIN LOOP



Printed By USMC882788 p:\high-eas2\pw_bentley.com\high-eas2\pw-10\Documents\Transportation_Eng_BU\The NORTH-EAST MAGLEV\VEIS\Technical\Baltimore - DC\CADD\Cutsheets\DEIS - Facilities_DEIS.dgn

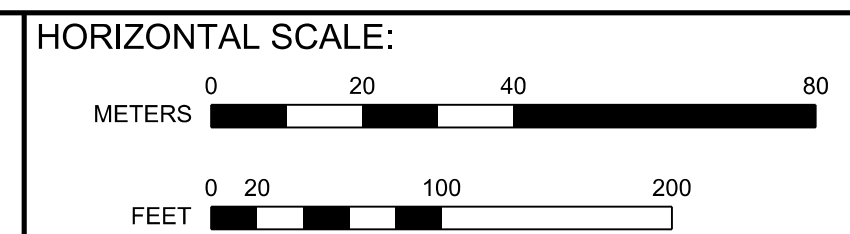
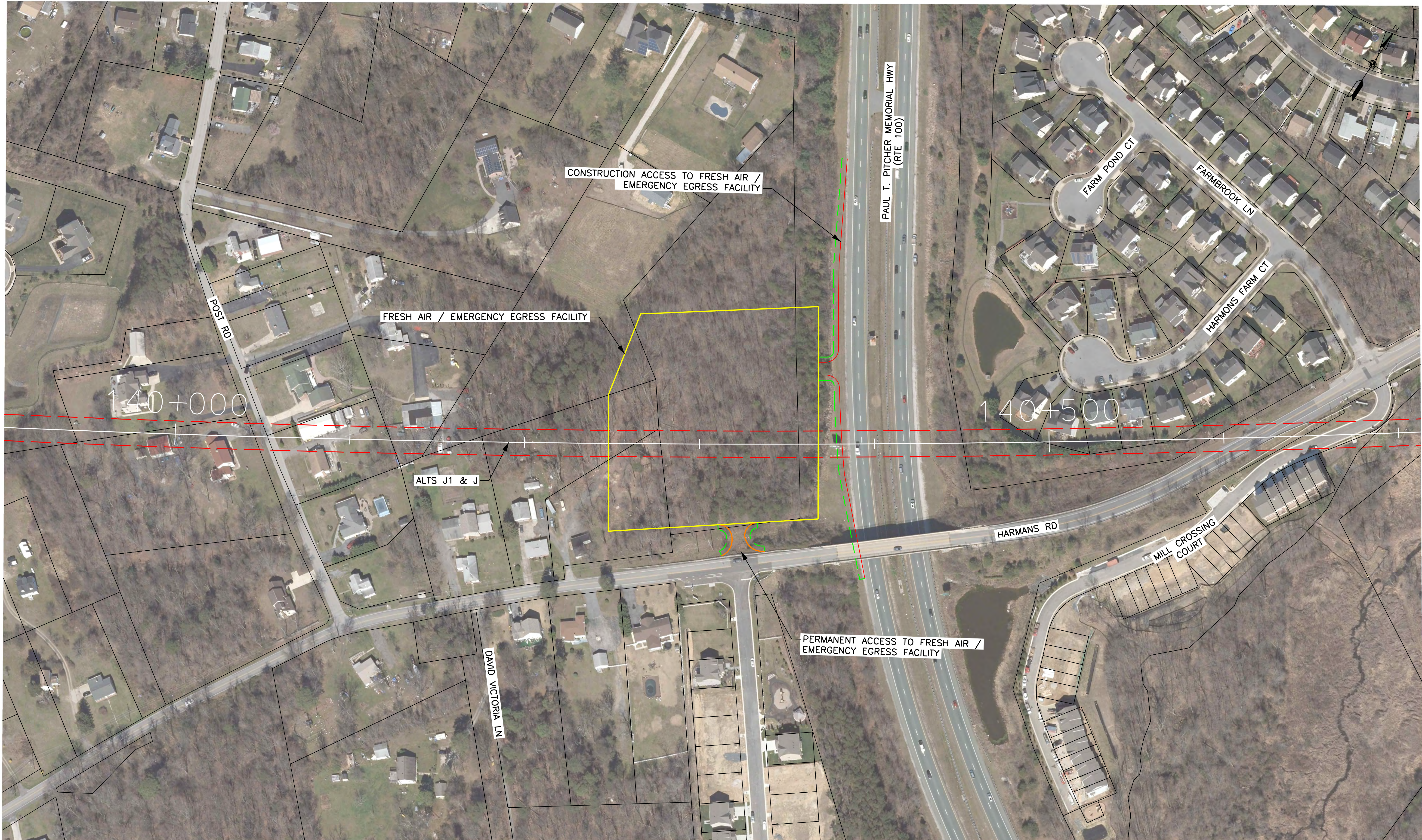


VERTICAL SCALE:
NONE

BALTIMORE-WASHINGTON SCMAGLEV
J ALIGNMENT
SCMAGLEV SYSTEMS STA. 134+900

DATE: 6/10/2020
DRAWING NO. F-38
SHEET NO. -- OF --

Printed By USMC882788 p:\high-eas2\pw_bentley.com\high-eas2-pw-10\Documents\Transportation_Eng\B\The NORTHHEAST\MAGLEV\EST\Technical\Baltimore - DC\CADD\Cutsheets\DEIS - Facilities_DEIS.dgn

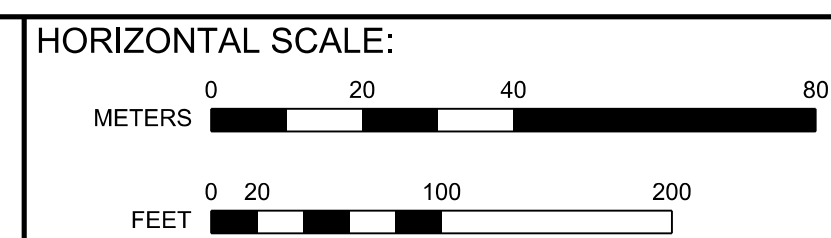


VERTICAL SCALE:
NONE

BALTIMORE-WASHINGTON SCMAGLEV
J1 AND J ALIGNMENTS
FRESH AIR / EMERGENCY EGRESS FACILITY STA. 140+300

DATE: 6/10/2020
DRAWING NO. F-39
SHEET NO. -- OF --

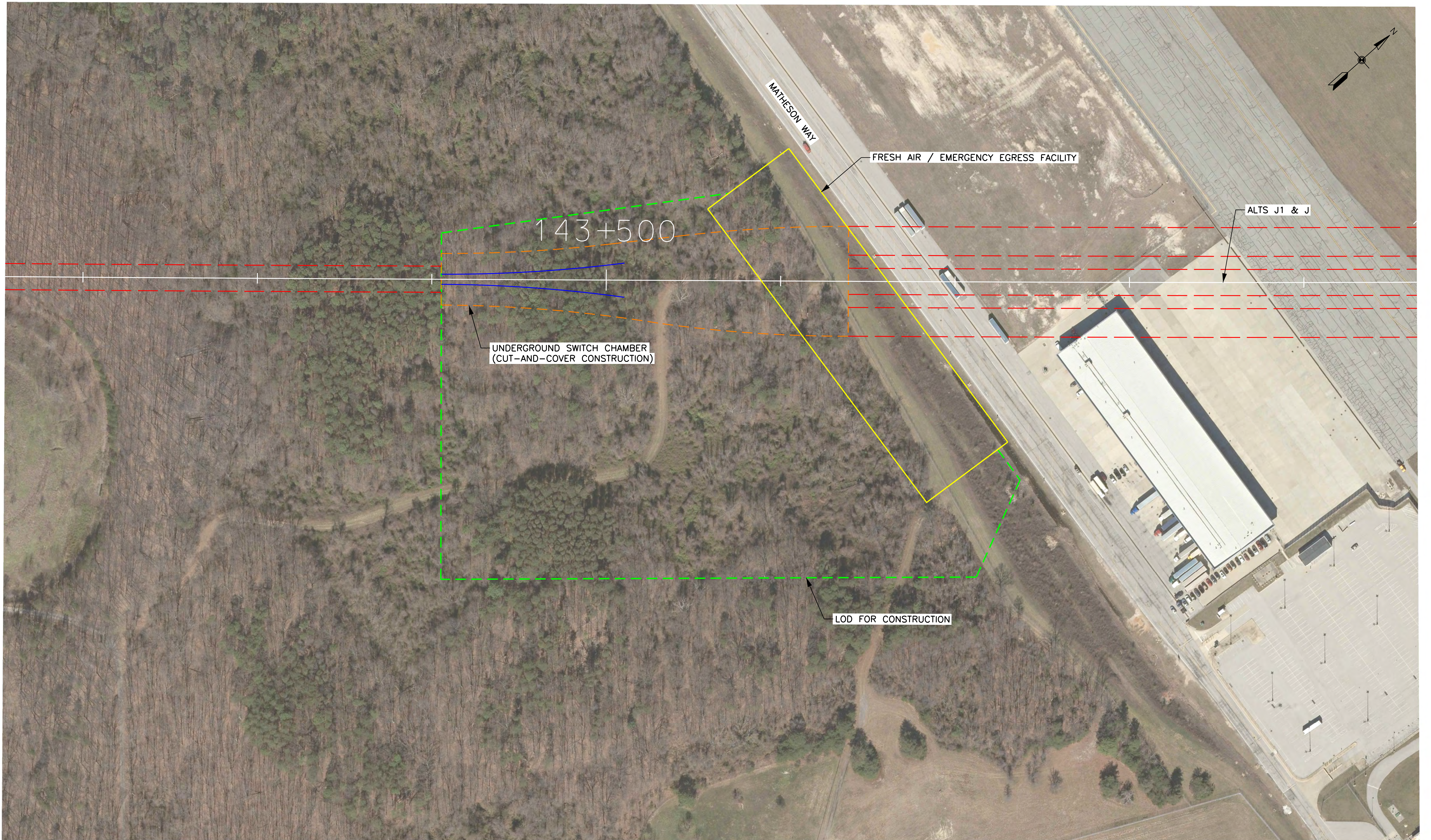
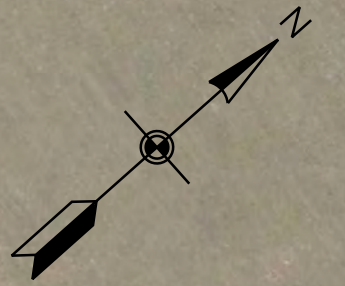
Printed By USMC882788 p:\high-eas2\pw-beentley.com\high-eas2-pw-10\Documents\Transportation_Eng\BUThe NORTHHEAST MAGLEV\VIEW\Technical\Baltimore - DC\CADD\Cutsheets\DEIS - Facilities_DEIS.dgn 6/10/2020



VERTICAL SCALE:
NONE

BALTIMORE-WASHINGTON SCMAGLEV
J1 AND J ALIGNMENTS
FRESH AIR / EMERGENCY EGRESS FACILITY STA. 141+600

DATE: 6/10/2020
DRAWING NO. F-40
SHEET NO. -- OF --



UNDERGROUND SWITCH CHAMBER
(CUT-AND-COVER CONSTRUCTION)

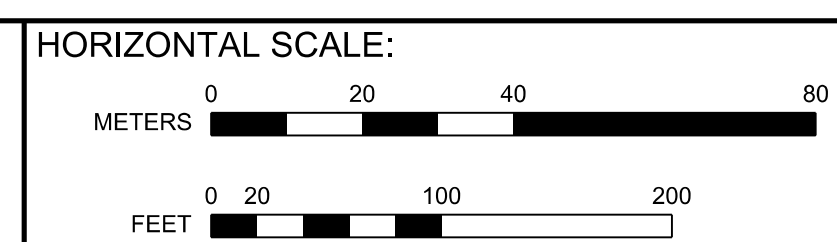
LOD FOR CONSTRUCTION

143+500

FRESH AIR / EMERGENCY EGRESS FACILITY

ALTS J1 & J

MATHESON WAY

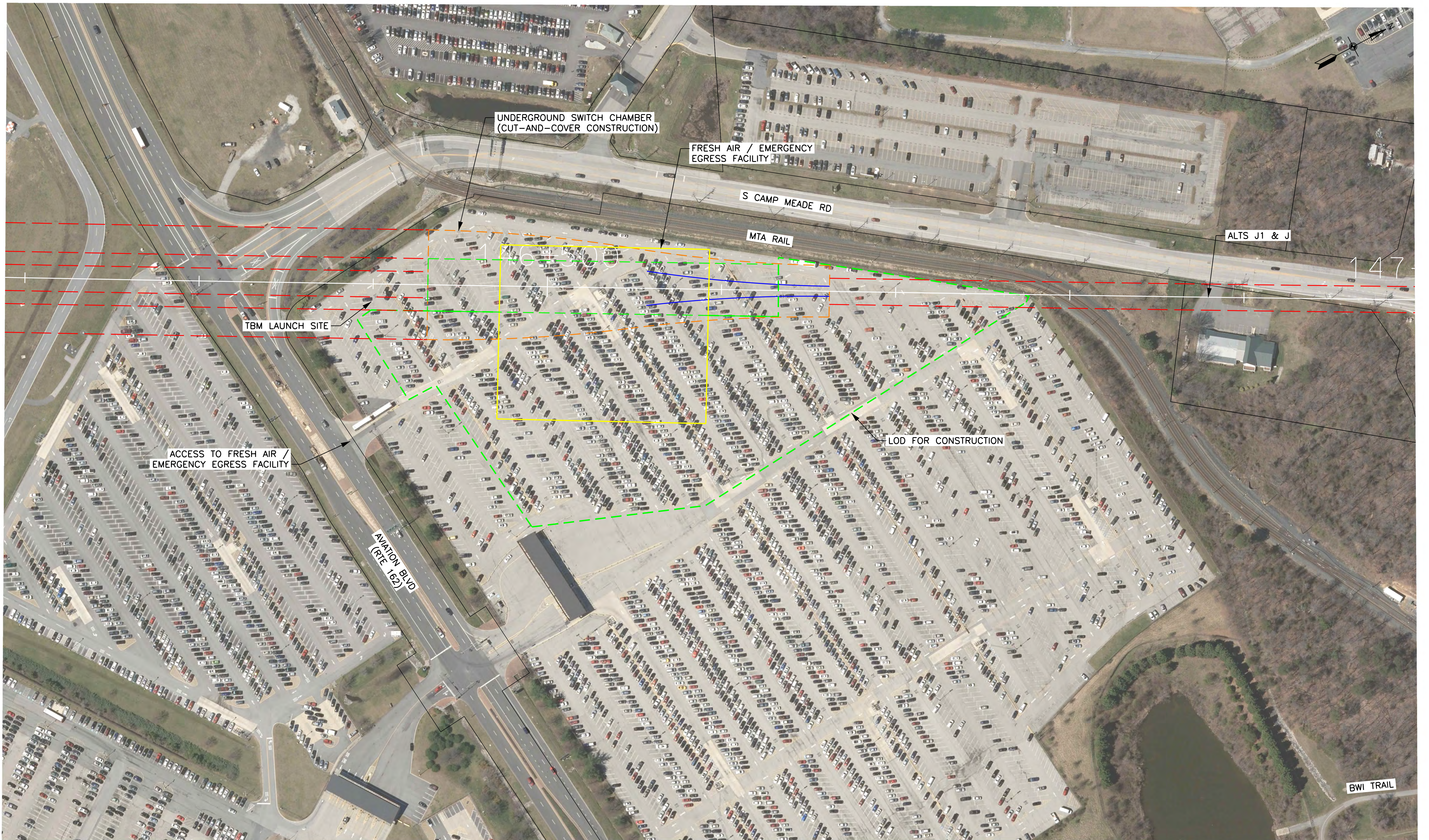


VERTICAL SCALE:
NONE

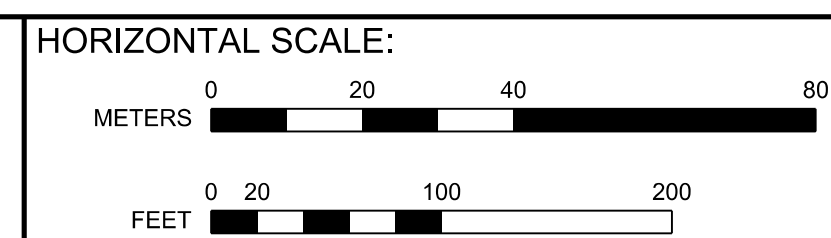
BALTIMORE-WASHINGTON SCMAGLEV
J1 AND J ALIGNMENTS
FRESH AIR / EMERGENCY EGRESS FACILITY STA. 143+600

DATE: 6/10/2020
DRAWING NO. F-41
SHEET NO. -- OF --

Printed By USMC882788 p:\high-eas2\pw_bentley.com\high-eas2-pw-10\Documents\Transportation_Eng_BU\The NORTH-EAST MAGLEV\WEB\Technical\Baltimore - DC\CADD\Cutsheets\DEIS_Facilities_DEIS.dgn 6/10/2020



Printed By USMC882788 p:\high-eas2\pw_bentley.com\high-eas2\pw-10\Documents\Transportation_Eng\BUTHE NORTHHEAST MAGLEV\WEB\Technical\Baltimore - DC\CADD\Cutsheets\DEIS - Facilities_DEIS.dgn 6/10/2020



VERTICAL SCALE:
NONE

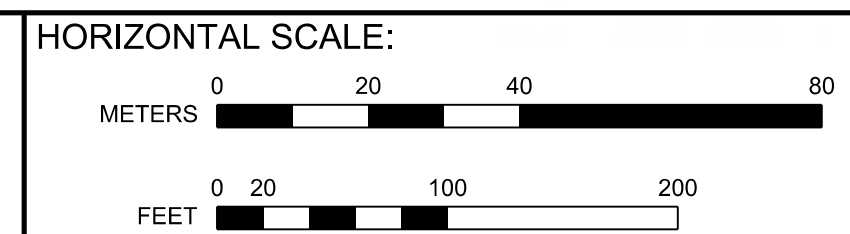
BALTIMORE-WASHINGTON SCMAGLEV
J1 AND J ALIGNMENTS
FRESH AIR / EMERGENCY EGRESS FACILITY STA. 146+500

DATE:	6/10/2020
DRAWING NO.	F-42
SHEET NO.	-- OF --

Printed By USMC882788 p:\high-eas2\pw_bentley.com\high-eas2\pw-10\Documents\Transportation_Eng\BUTHE NORTHHEAST MAGLEV\WEB\Technical\Baltimore - DC\CADD\Cutsheets\DEIS_Facilities_DEIS.dgn



6/10/2020

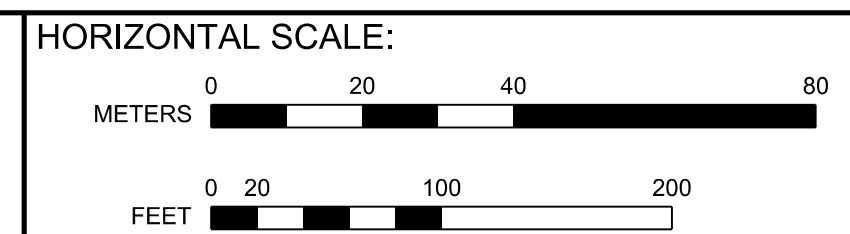
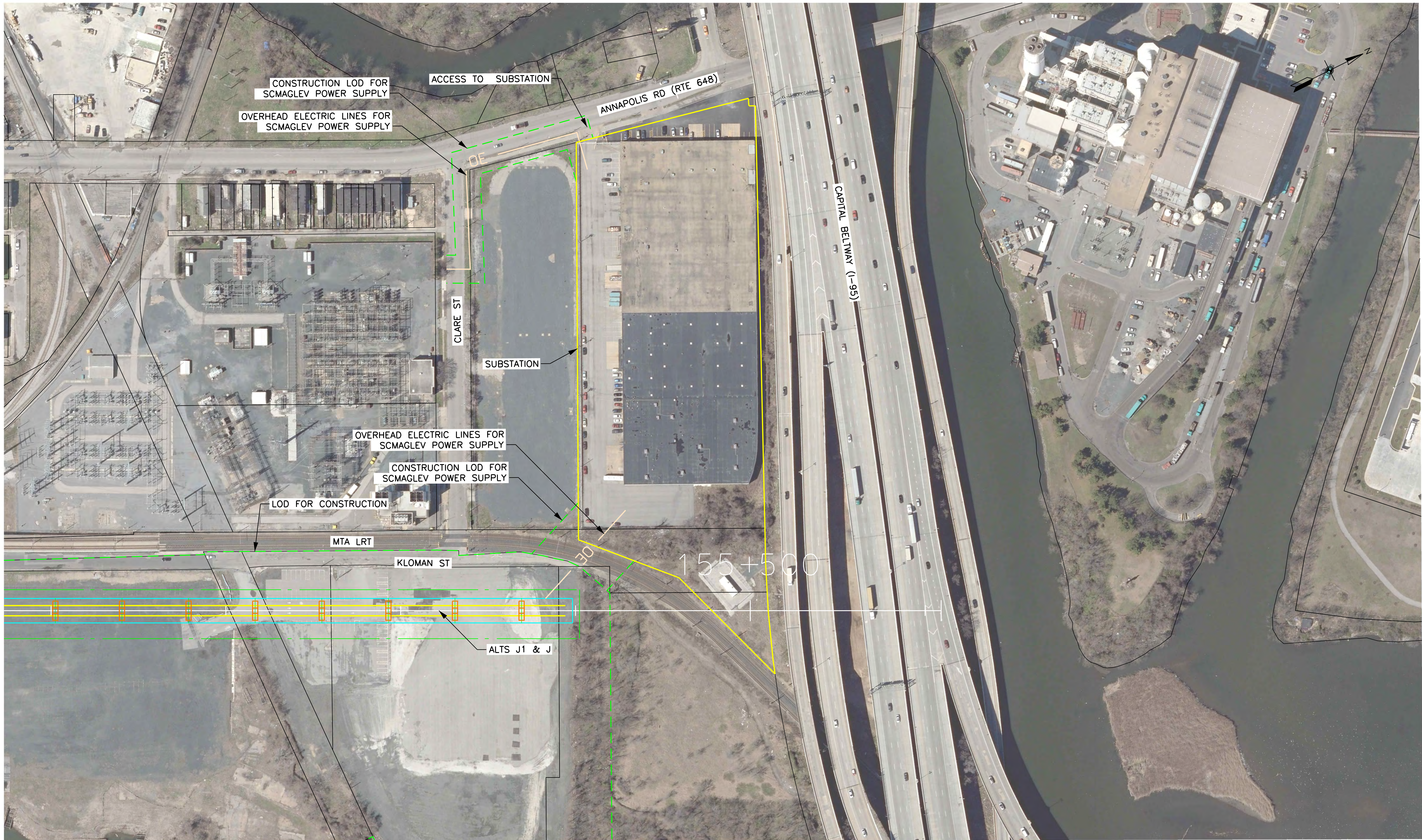


VERTICAL SCALE:
NONE

BALTIMORE-WASHINGTON SCMAGLEV
J1 AND J ALIGNMENTS
FA / EE FACILITY & SUBSTATION STA. 151+100

DATE:	6/10/2020
DRAWING NO.	F-43
SHEET NO.	-- OF --

Printed By USMC882788 p:\high-eas2\pw_bentley.com\high-eas2-pw-10\Documents\Transportation\Eng\BUT\The NORTH-EAST MAGLEV\WEB\Technical\Baltimore - DC\CADD\Cutehearts\DEIS - Facilities_DEIS.dgn 6/10/2020



VERTICAL SCALE:
NONE

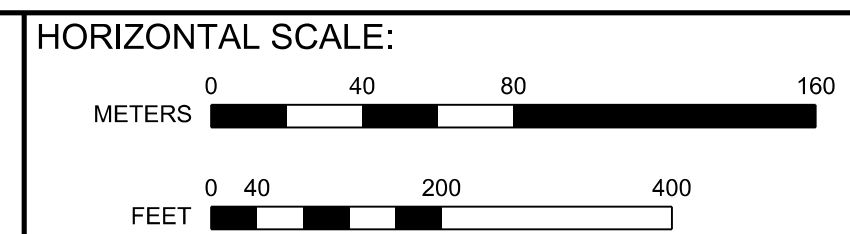
BALTIMORE-WASHINGTON SCMAGLEV
J1 AND J ALIGNMENTS
WESTPORT SUBSTATION

DATE:	6/10/2020
DRAWING NO.	F-44
SHEET NO.	-- OF --



NOTE:
 THE VIADUCT LAYDOWN AREAS SHOWN ON SHEETS LA-01 THRU 03 ARE
 IN ADDITION TO THE LOD FOR CONSTRUCTION AREAS SHOWN ALONG THE
 ALT J AND J1 ALIGNMENTS.

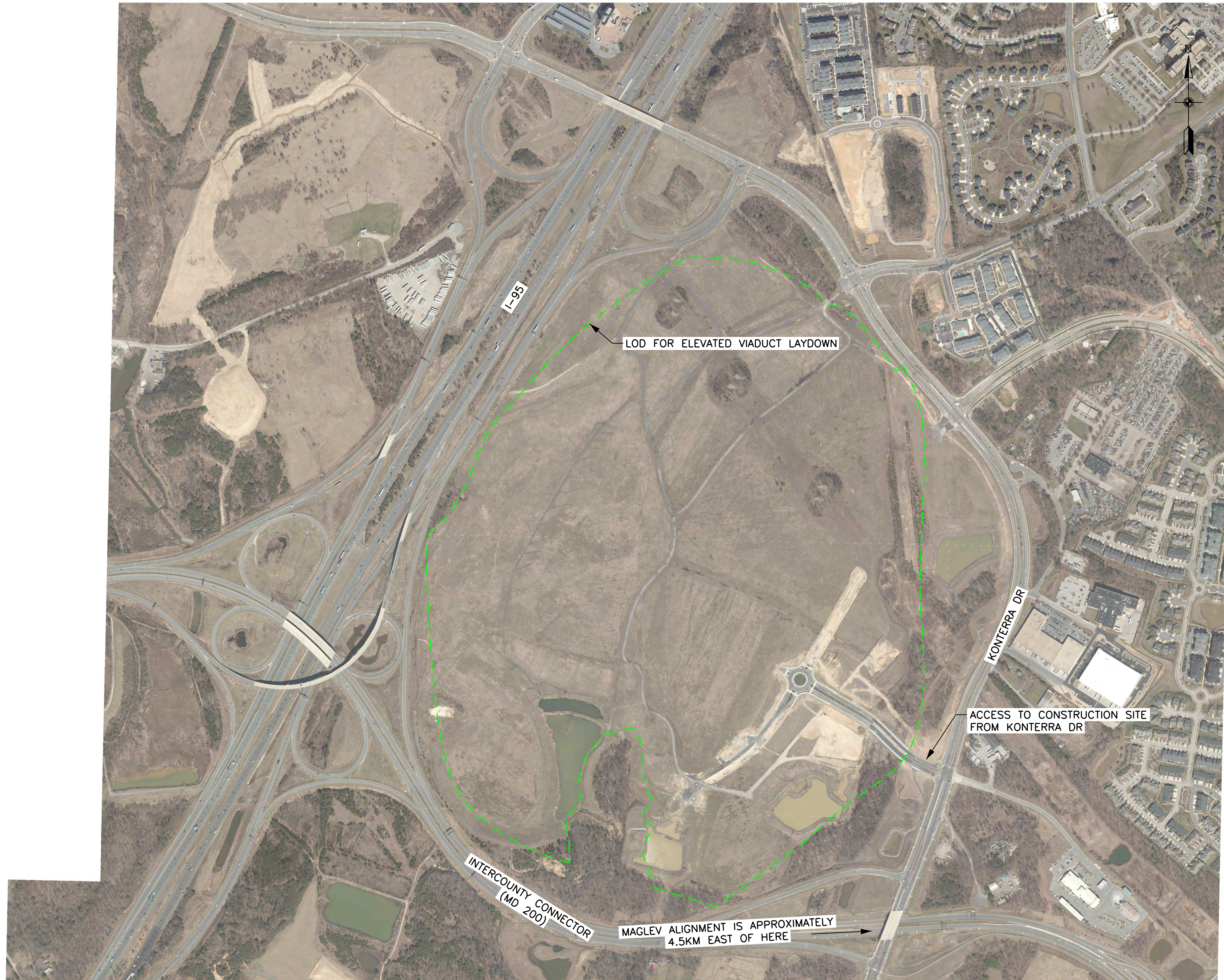
6/11/2020 Printed By USMC882788 p:\high-eus2-pw-bentley.com\high-eus2-pw-10\Documents\Transportation\Eng\B\The NORTH-EAST\MAGLEV\WEB\Technical\Ballmore - DC\CADD\Working\MC\align\w\mjpc-01_Laydown Area_DBE.dgn



VERTICAL SCALE:
 NONE

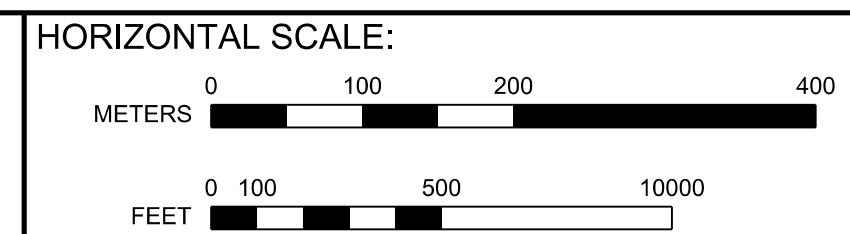
**BALTIMORE-WASHINGTON SCMAGLEV
 J1 AND J ALIGNMENTS
 LOD FOR ELEVATED VIADUCT LAYDOWN**

DATE:	6/11/2020
DRAWING NO.	LA-01
SHEET NO.	-- OF --



Printed By USMC882788 p:\high-eas2-pw-bentley.com\high-eas2-pw-10\Documents\Transportation_Eng\B\The NORTH-EAST MAGLEV\EST\Technical\Ballmore - DC\CADD\Cutsheets\DEIS_Laydown Area_DEIS.dgn

6/10/2020



VERTICAL SCALE:
NONE

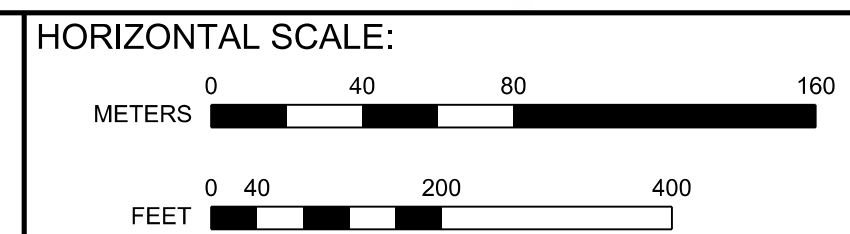
BALTIMORE-WASHINGTON SCMAGLEV
J1 AND J ALIGNMENTS
LOD FOR ELEVATED VIADUCT LAYDOWN

DATE:	6/10/2020
DRAWING NO.:	LA-02
SHEET NO.:	-- OF --



Printed By USM0882788 p:\high-eas2\pw_bentley.com\high-eas2\pw-10\Documents\Transportation\Eng\B\The NORTHHEAST MAGLEV\WEB\Technical\Baltimore - DC\CADD\Cutsheets\DEIS_Laydown Area_DEIS.dgn

6/10/2020



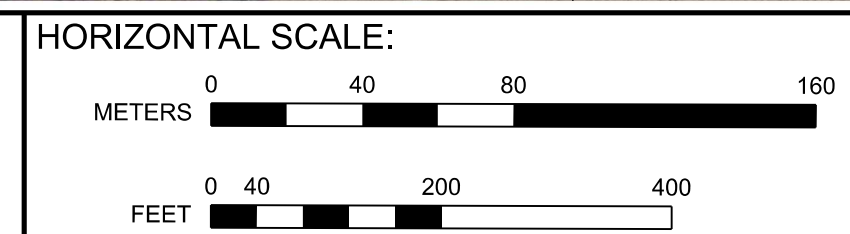
VERTICAL SCALE:
NONE

**BALTIMORE-WASHINGTON SCMAGLEV
J1 AND J ALIGNMENTS
LOD FOR CONSTRUCTION**

DATE:	6/10/2020
DRAWING NO.:	LA-03
SHEET NO.:	-- OF --



Printed By USM0882788 p:\high-eas2\pw_bentley.com\high-eas2\pw-10\Documents\Transportation_Eng\BUTHE NORTHHEAST MAGLEV\WEB\Technical\Baltimore - DC\CADD\Cutsheets\DEIS_Laydown Area_DEIS.dgn

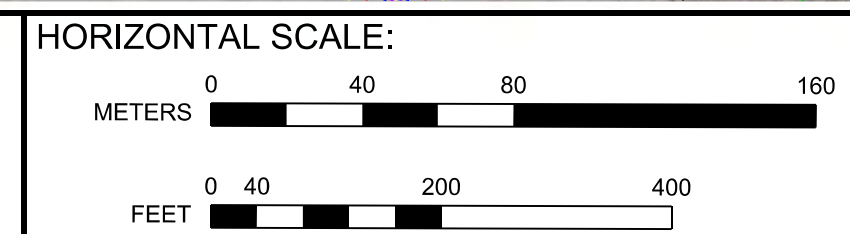


VERTICAL SCALE:
NONE

BALTIMORE-WASHINGTON SCMAGLEV
J1 AND J ALIGNMENTS
LOD FOR CONSTRUCTION

DATE:	6/10/2020
DRAWING NO.	LA-04
SHEET NO.	-- OF --

Printed By USMC882788 p:\high-speed-rail\benlby.com\high-speed-rail\Documents\Transportation_Eng\BUTHE NORTH-EAST MAGLEV\WEB\Technical\Baltimore - DC\CADD\Cutsheets\DEIS_Laydown_Area_DEIS.dgn



**BALTIMORE-WASHINGTON SCMAGLEV
J1 AND J ALIGNMENTS
LOD FOR CONSTRUCTION**

DATE:	6/10/2020
DRAWING NO.	LA-05
SHEET NO.	-- OF --