



FINAL ENVIRONMENTAL IMPACT STATEMENT AND FINAL SECTION 4(f) EVALUATION

APPENDIX 6

Land Use, Zoning, Public Policy, and Property Acquisition

6-1: Potential Property Acquisition



FINAL ENVIRONMENTAL IMPACT STATEMENT AND FINAL SECTION 4(f) EVALUATION

APPENDIX 6-1

Potential Property Acquisition

Property Acquisition Table

**Hudson Tunnel Project: Potential Temporary and Permanent Property Acquisitions Required
Based on Preliminary Engineering**

Location	Block	Lot	Class	Lot Area [Acre]	Easement Area [Acre]	Easement Type	Temporary	Permanent
Property Acquisitions, New Jersey: County Road to Tonnelle Avenue								
Secaucus	44	2 & 4	Industrial	21.09	0.182	Perpetual Access		X
Secaucus	44	2 & 4	Industrial	21.09	0.019	Temporary Site Mitigation Work	X	
Secaucus	44	2 & 4	Industrial	21.09	0.007	Temporary Site Mitigation Work	X	
Secaucus	44	2 & 4	Industrial	21.09	0.403	Fee Parcel		X
Secaucus	44	2 & 4	Industrial	21.09	0.073	Temporary Construction	X	
Secaucus	44	2 & 4	Industrial	21.09	0.007	Temporary Site Mitigation Work	X	
Secaucus	44	2 & 4	Industrial	21.09	0.007	Temporary Site Mitigation Work	X	
Secaucus	44	2 & 4	Industrial	21.09	0.013	Temporary Site Mitigation Work	X	
Secaucus	44	2 & 4	Industrial	21.09	0.068	Temporary Construction	X	
Secaucus	44	2 & 4	Industrial	21.09	0.039	Permanent Construction and Maintenance		X
Secaucus	44	5.04	Industrial	12.65	0.009	Temporary Site Mitigation Work	X	
Secaucus	44	5.04	Industrial	12.65	0.014	Temporary Site Mitigation Work	X	
Secaucus	44	5.04	Industrial	12.65	0.763	Perpetual Access		X
Secaucus	44	5.04	Industrial	12.65	0.606	Mitigation Drainage		X
Secaucus	44	5.04	Industrial	12.65	0.464	Permanent Construction and Maintenance		X
Secaucus	44	5.04	Industrial	12.65	0.008	Temporary Site Mitigation Work	X	
Secaucus	44	5.04	Industrial	12.65	0.008	Temporary Site Mitigation Work	X	
Secaucus	44	5.04	Industrial	12.65	0.061	Temporary Site Mitigation Work	X	
Secaucus	44	5.04	Industrial	12.65	0.065	Perpetual Access		X
Secaucus	45	2.03	Industrial	12.65	0.287	Dominant Estate		X
Secaucus	44	5.04	Industrial	12.65	0.152	Temporary Construction	X	
Secaucus	47	4.08	Industrial	3.19	0.070	Temporary Site Mitigation Work	X	
Secaucus	47	4.08	Industrial	3.19	0.010	Temporary Site Mitigation Work	X	
Secaucus	47	4.08	Industrial	3.19	0.004	Temporary Site Mitigation Work	X	
Secaucus	47	4.08	Industrial	3.19	0.079	Mitigation Drainage		X
Secaucus	47	4.08	Industrial	3.19	0.009	Temporary Construction	X	
Secaucus	47	4.08	Industrial	3.19	0.060	Permanent Construction and Maintenance		X
Secaucus	47	3.01	Industrial	3.19	0.535	Perpetual Access		X
Secaucus	47	3.01	Industrial	3.19	0.013	Temporary Construction	X	
Secaucus	47	3.01	Industrial	3.19	0.241	Mitigation Drainage		X
Secaucus	47	3.01	Industrial	3.19	0.179	Permanent Construction and Maintenance		X
Secaucus	47	3.01	Industrial	3.19	0.016	Temporary Site Mitigation Work	X	
Secaucus	47	3.01	Industrial	3.19	0.046	Temporary Site Mitigation Work	X	
Secaucus	47	2.01	Industrial	3.27	0.049	Temporary Site Mitigation Work	X	
Secaucus	47	2.01	Industrial	3.27	0.441	Mitigation Drainage		X
Secaucus	47	2.01	Industrial	3.27	0.411	Permanent Construction and Maintenance		X
Secaucus	47	2.01	Industrial	3.27	0.353	Perpetual Access		X
Secaucus	47	2.01	Industrial	3.27	0.053	Temporary Site Mitigation Work	X	
Secaucus	47	2.01	Industrial	3.27	0.071	Temporary Construction	X	
Secaucus	47	2.01	Industrial	3.27	0.104	Temporary Site Mitigation Work	X	
Secaucus	47	2.01	Industrial	3.27	0.014	Temporary Site Mitigation Work	X	
North Bergen	449.01	1.02	Industrial	1.79	0.031	Temporary Construction	X	
North Bergen	449.01	1.02	Industrial	1.79	0.030	Permanent Construction and Maintenance		X
North Bergen	449.01	1.02	Industrial	1.79	0.338	Temporary Construction	X	
North Bergen	449.01	1	Industrial	10.37	0.027	Permanent Construction and Maintenance		X
North Bergen	449.01	1	Industrial	10.37	0.201	Temporary Construction	X	
North Bergen	449.01	3	Commercial	48.17	1.105	Permanent Construction and Maintenance		X
North Bergen	449.01	3	Commercial	48.17	0.287	Perpetual Access		X
North Bergen	449.01	3	Commercial	48.17	2.235	Temporary Site Mitigation Work	X	
North Bergen	449.01	3	Commercial	48.17	2.235	Temporary Site Mitigation Work	X	
North Bergen	449.01	3	Commercial	48.17	0.633	Temporary Site Mitigation Work	X	
North Bergen	485	1.09 (Part)	Railroad Class 1	9.39	0.123	Dominant Estate Serviant Parcel		X
North Bergen	485	1.09 (Part)	Railroad Class 1	9.39	0.023	Temporary Construction	X	
North Bergen	485	1	Other Exempt	5.27	0.135	Bridge		X
North Bergen	485	1	Other Exempt	5.27	0.038	Temporary Construction	X	
North Bergen	485	1	Other Exempt	5.27	0.038	Temporary Construction	X	

**Hudson Tunnel Project: Potential Temporary and Permanent Property Acquisitions Required
Based on Preliminary Engineering**

Location	Block	Lot	Class	Lot Area [Acre]	Easement Area [Acre]	Easement Type	Temporary	Permanent
North Bergen	486	1	Railroad Class 1	7.70	0.124	Bridge		X
North Bergen	486	1	Railroad Class 1	7.70	0.011	Temporary Construction	X	
North Bergen	486	1	Railroad Class 1	7.70	0.010	Temporary Construction	X	
Property Acquisitions, New Jersey: Tonnelle Avenue to Hoboken Shaft Site								
North Bergen	44	9	Commercial	0.76	0.342	Deep subsurface		X
Weehawken	1	1-10	Commercial	0.68	0.085	Deep subsurface		X
Union City	185	3-4	Commercial	0.17	0.012	Deep subsurface		X
Union City	185 185 187	1-2 18-20 1.01, 1.02, 3-4	Vacant Land	4.88	0.799	Deep subsurface		X
Union City	186	67-70	Apartment	0.20	0.041	Deep subsurface		X
Union City	181	22-23	Apartment	0.14	0.069	Deep subsurface		X
Union City	63	24	Residential	0.06	0.011	Deep subsurface		X
Union City	63	25	Residential	0.06	0.046	Deep subsurface		X
Union City	63	23	Residential	0.05	0.021	Deep subsurface		X
Union City	63	22	Residential	0.05	0.015	Deep subsurface		X
Union City	63	21	Residential	0.05	0.009	Deep subsurface		X
Union City	63	20	Residential	0.05	0.002	Deep subsurface		X
Union City	74	27	Residential	0.04	0.014	Deep subsurface		X
Union City	74	25	Residential	0.03	0.023	Deep subsurface		X
Union City	74	24	Residential	0.03	0.027	Deep subsurface		X
Union City	74	22	Residential	0.04	0.037	Deep subsurface		X
Union City	74	21	Residential	0.04	0.038	Deep subsurface		X
Union City	74	20	Residential	0.04	0.025	Deep subsurface		X
Union City	74	19	Residential	0.04	0.041	Deep subsurface		X
Union City	74	18	Residential	0.04	0.039	Deep subsurface		X
Union City	74	16-17	Commercial	0.14	0.096	Deep subsurface		X
Union City	74	13	Residential	0.07	0.009	Deep subsurface		X
Union City	73	4	Residential	0.05	0.021	Deep subsurface		X
Union City	73	3	Residential	0.06	0.044	Deep subsurface		X
Union City	73	2	Commercial	0.06	0.065	Deep subsurface		X
Union City	73	5	Apartment	0.09	0.035	Deep subsurface		X
Union City	73	6	Apartment	0.09	0.014	Deep subsurface		X
Union City	76	1-8, 24-27	Church & Charitable Property	0.74	0.063	Deep subsurface		X
Union City	76	18-20	Apartment	0.15	0.116	Deep subsurface		X
Union City	76	14-16	Apartment	0.17	0.023	Deep subsurface		X
Union City	77	1-11 & 26-28	Other Exempt	0.80	0.248	Deep subsurface		X
Union City	86	1	Commercial	0.06	0.004	Deep subsurface		X
Union City	86	30	Apartment	0.07	0.014	Deep subsurface		X
Union City	86	28	Residential	0.16	0.153	Deep subsurface		X
Union City	86	25.01	Residential	0.06	0.055	Deep subsurface		X
Union City	86	26.01	Residential	0.06	0.050	Deep subsurface		X
Union City	86	27.01	Apartment	0.08	0.048	Deep subsurface		X
Union City	86	24	Residential	0.05	0.011	Deep subsurface		X
Union City	86	23	Residential	0.05	0.031	Deep subsurface		X
Union City	86	22	Residential	0.05	0.060	Deep subsurface		X
Union City	86	20	Residential	0.04	0.043	Deep subsurface		X
Union City	86	19	Residential	0.04	0.034	Deep subsurface		X
Union City	86	18	Residential	0.04	0.023	Deep subsurface		X
Union City	86	17	Residential	0.04	0.012	Deep subsurface		X
Union City	85	30	Residential	0.03	0.025	Deep subsurface		X
Union City	85	29	Residential	0.03	0.028	Deep subsurface		X
Union City	85	28	Commercial	0.03	0.028	Deep subsurface		X
Union City	85	27	Commercial	0.03	0.029	Deep subsurface		X
Union City	85	26	Residential	0.04	0.028	Deep subsurface		X
Union City	85	24-25	Residential	0.10	0.031	Deep subsurface		X
Union City	92	4	Residential	0.04	0.004	Deep subsurface		X
Union City	92	6 & 7	Residential	0.18	0.054	Deep subsurface		X
Union City	92	8	Residential	0.09	0.042	Deep subsurface		X
Union City	92	9	Residential	0.09	0.051	Deep subsurface		X
Union City	92	10	Residential	0.13	0.091	Deep subsurface		X
Union City	92	11-12	Residential	0.13	0.098	Deep subsurface		X
Union City	92	14	Residential	0.05	0.009	Deep subsurface		X

**Hudson Tunnel Project: Potential Temporary and Permanent Property Acquisitions Required
Based on Preliminary Engineering**

Location	Block	Lot	Class	Lot Area [Acre]	Easement Area [Acre]	Easement Type	Temporary	Permanent
Union City	92	15	Residential	0.05	0.029	Deep subsurface		X
Union City	92	18	Residential	0.05	0.048	Deep subsurface		X
Union City	92	19	Residential	0.05	0.034	Deep subsurface		X
Union City	93	31	Residential	0.05	0.006	Deep subsurface		X
Union City	93	30	Residential	0.05	0.025	Deep subsurface		X
Union City	93	27	Residential	0.05	0.049	Deep subsurface		X
Union City	93	25	Residential	0.09	0.044	Deep subsurface		X
Union City	93	22-23	Residential	0.16	0.034	Deep subsurface		X
Union City	93	21	Residential	0.08	0.002	Deep subsurface		X
Union City	108	1.04	Public School Property	5.26	0.356	Deep subsurface		X
Union City	97	17	Residential	0.05	0.034	Deep subsurface		X
Union City	97	15	Commercial	0.05	0.051	Deep subsurface		X
Union City	97	14	Residential	0.06	0.020	Deep subsurface		X
Union City	97	13	Apartment	0.06	0.009	Deep subsurface		X
Union City	104	1 (1-4, 33)	Vacant Land	0.29	0.043	Deep subsurface		X
Union City	104	32	Residential	0.06	0.034	Deep subsurface		X
Union City	104	31	Residential	0.06	0.044	Deep subsurface		X
Union City	104	29	Residential	0.06	0.055	Deep subsurface		X
Union City	104	24	Residential	0.05	0.051	Deep subsurface		X
Union City	104	20	Residential	0.05	0.008	Deep subsurface		X
Union City	105	7	Residential	0.06	0.051	Deep subsurface		X
Union City	106	31	Residential	0.06	0.059	Deep subsurface		X
Union City	106	29	Residential	0.07	0.011	Deep subsurface		X
Union City	106	33	Residential	0.05	0.054	Deep subsurface		X
Union City	106	34	Residential	0.05	0.046	Deep subsurface		X
Union City	106	35	Residential	0.05	0.035	Deep subsurface		X
Union City	106	36	Residential	0.05	0.024	Deep subsurface		X
Union City	106	38 (38-46)	Commercial	0.50	0.084	Deep subsurface		X
Union City	106	25 (25-28)	Industrial	0.59	0.177	Deep subsurface		X
Union City	106	1 (1-10, 49-60)	Commercial	1.19	0.533	Deep subsurface		X
North Bergen	40	24	Residential	0.04	0.015	Deep subsurface		X
North Bergen	43	48	Commercial	0.12	0.042	Deep subsurface		X
North Bergen	43	49	Residential	0.07	0.033	Deep subsurface		X
North Bergen	43	50	Residential	0.07	0.042	Deep subsurface		X
North Bergen	43	53	Commercial	0.11	0.081	Deep subsurface		X
North Bergen	44	1-8	Vacant Land	0.42	0.143	Deep subsurface		X
Union City	74	28	Residential	0.05	0.012	Deep subsurface		X
Union City	74	26	Residential	0.03	0.018	Deep subsurface		X
Union City	73	26	Commercial	0.07	0.001	Deep subsurface		X
Union City	76	17	Apartment	0.08	0.067	Deep subsurface		X
Union City	76	21-23	Public Property	0.17	0.143	Deep subsurface		X
Union City	73	1	Commercial	0.06	0.062	Deep subsurface		X
Union City	106	61	Commercial	0.51	0.002	Deep subsurface		X
Union City	74	15	Residential	0.06	0.003	Deep subsurface		X
Union City	74	6-7	Apartment	0.12	0.007	Deep subsurface		X
Union City	74	12	Residential	0.06	0.002	Deep subsurface		X
Union City	74	23	Residential	0.03	0.000	Deep subsurface		X

Property Acquisitions, New Jersey: Hoboken Shaft Site to New Jersey State Line (Hudson River)

Hoboken	146	4.01	Vacant Land	0.09	0.087	Permanent Subsurface		X
Hoboken	146	4	Vacant Land	0.03	0.033	Permanent Subsurface		X
Weehawken	34.03	1.01 & 1.02	Publicly owned	2.00	0.018	Dominant Estate Serviant Parcel		X
Weehawken	34.03	1.01 & 1.02		2.00	0.004	Permanent Subsurface		X
Weehawken	34.03	2.02 & 2.03		4.50	0.007	Permanent Subsurface		X
Hoboken	267 265 264 264	1 1 3.01 2	Publicly owned	32.60	5.431	Permanent Subsurface		X
Hoboken	269.04	1	Publicly owned	1.43	0.021	Permanent Subsurface		X
Hoboken	269.04	1	Publicly owned	1.43	0.060	Dominant Estate Serviant Parcel		X
Hoboken	269.04	1	Publicly owned	1.43	0.093	Permanent Subsurface		X
Hoboken	34.03	1.01 & 1.02		2.00	0.060	Permanent Subsurface		X

**Hudson Tunnel Project: Potential Temporary and Permanent Property Acquisitions Required
Based on Preliminary Engineering**

Location	Block	Lot	Class	Lot Area [Acre]	Easement Area [Acre]	Easement Type	Temporary	Permanent
Hoboken	256 11 11	1.01 2 1	Publicly owned	2.27	0.426	Permanent Subsurface		X
Hoboken	141	12.01	Industrial	0.46	0.002	Permanent Subsurface		X
Hoboken	266	1	Publicly owned	4.19	0.065	Permanent Subsurface		X
Hoboken	11	5	Residential	0.75	0.036	Temporary Construction Access: Haul Route Option 1	X	
Hoboken	146	2	Industrial	0.37	0.009	Temporary Construction Access: Haul Route Option 2	X	
Hoboken	11	5	Residential	0.75	0.036	Temporary Construction Access: Haul Route Option 3	X	
Hoboken	34.03	7.07	Railroad	0.02	0.004	Temporary Construction Access: Haul Route Option 3	X	
Hoboken	34.03	7.02	Commercial	1.38	0.003	Temporary Construction Access: Haul Route Option 3	X	
Hoboken	34.03	7.02	Commercial	1.38	0.001	Temporary Construction Access: Haul Route Option 3	X	
New Jersey - Hudson River			Hudson River	0.00	4.794	Permanent Subsurface		X
Property Acquisitions, New York								
Manhattan	661	River	Publicly owned	0.00	3.926	Permanent Subsurface		X
Manhattan	661	River	Publicly owned	0.00	0.836	Permanent Subsurface		X
Manhattan	665	6 & 68	Publicly owned	5.96	1.588	Permanent Subsurface		X
Manhattan			Publicly owned	0.00	0.451	Permanent Surface		X
Manhattan			Publicly owned	0.00	0.069	Mitigation Drainage		X
Manhattan	675	1	Industrial (vacant)	1.80	1.801	Permanent Surface		X
Manhattan	675	12	Car Wash	1.42	0.465	Temporary Construction	X	
Manhattan	729	1	Commercial	3.10	3.098	Permanent Surface		X

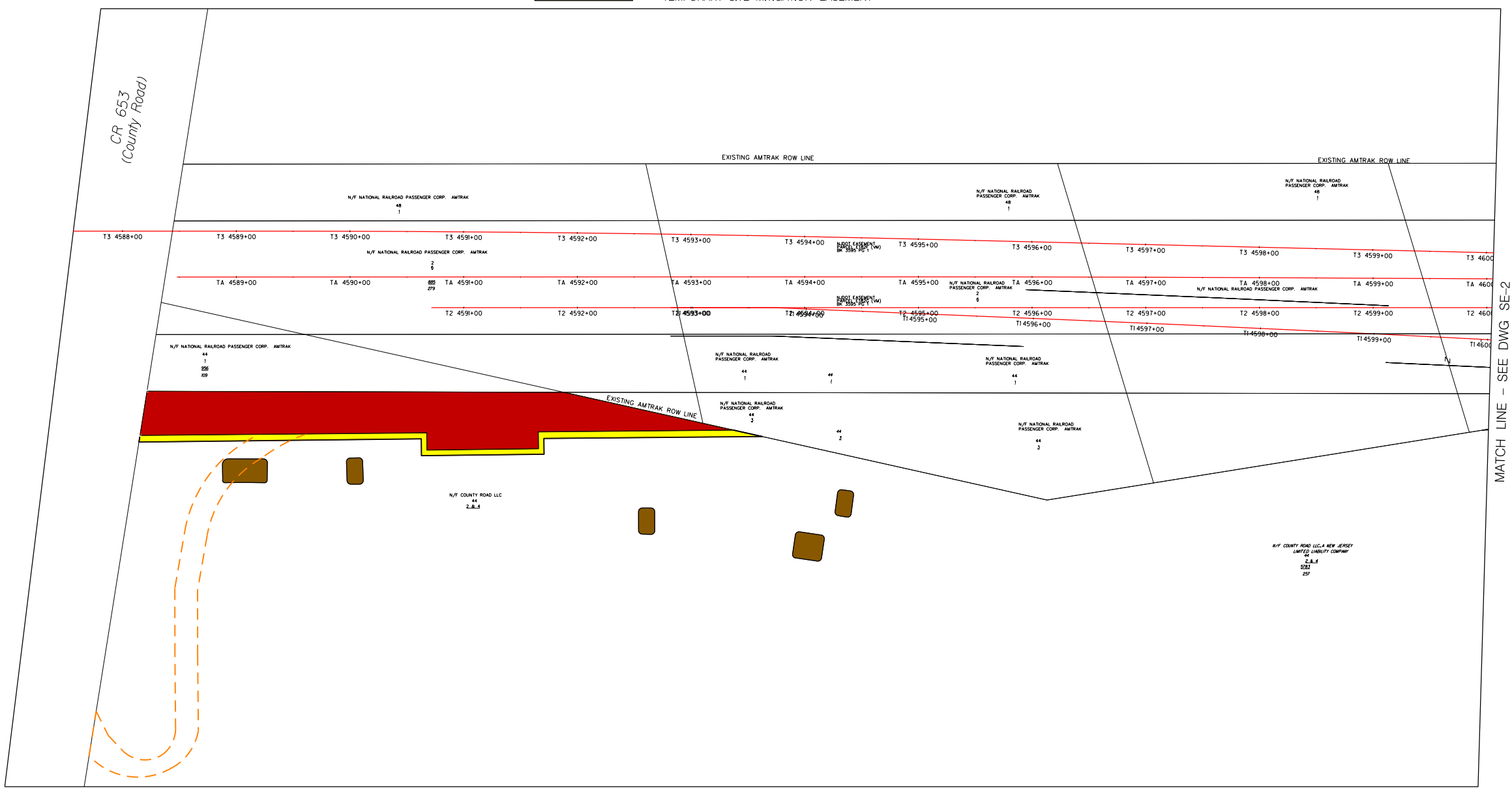
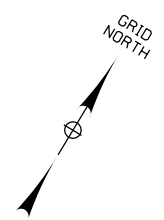
Property Acquisition Maps

LEGEND FOR SURFACE EASEMENT

- PROPOSED FEE PARCEL
- PROPOSED TEMPORARY CONSTRUCTION EASEMENT
- PROPOSED PERPETUAL ACCESS EASEMENT
- ALIGNMENT /CENTERLINE OF TRACK
- TEMPORARY SITE MITIGATION EASEMENT

← NEWARK

NEW YORK →



PLAN



This material is owned by and is the sole and exclusive property of the National Railroad Passenger Corporation (Amtrak), Office of Engineering, and is supplied on a confidential basis solely for use in connection with the design and construction of Amtrak facilities and equipment. The reproduction, display, sale or other disposition of this document without the express written consent of the National Railroad Passenger Corporation, Office of Engineering, is prohibited.

HUDSON RIVER TUNNEL PROJECT

SURFACE EASEMENT LIMIT
SHEET 1 OF 8








The Gateway
Trans-Hudson
Partnership

SE - 1



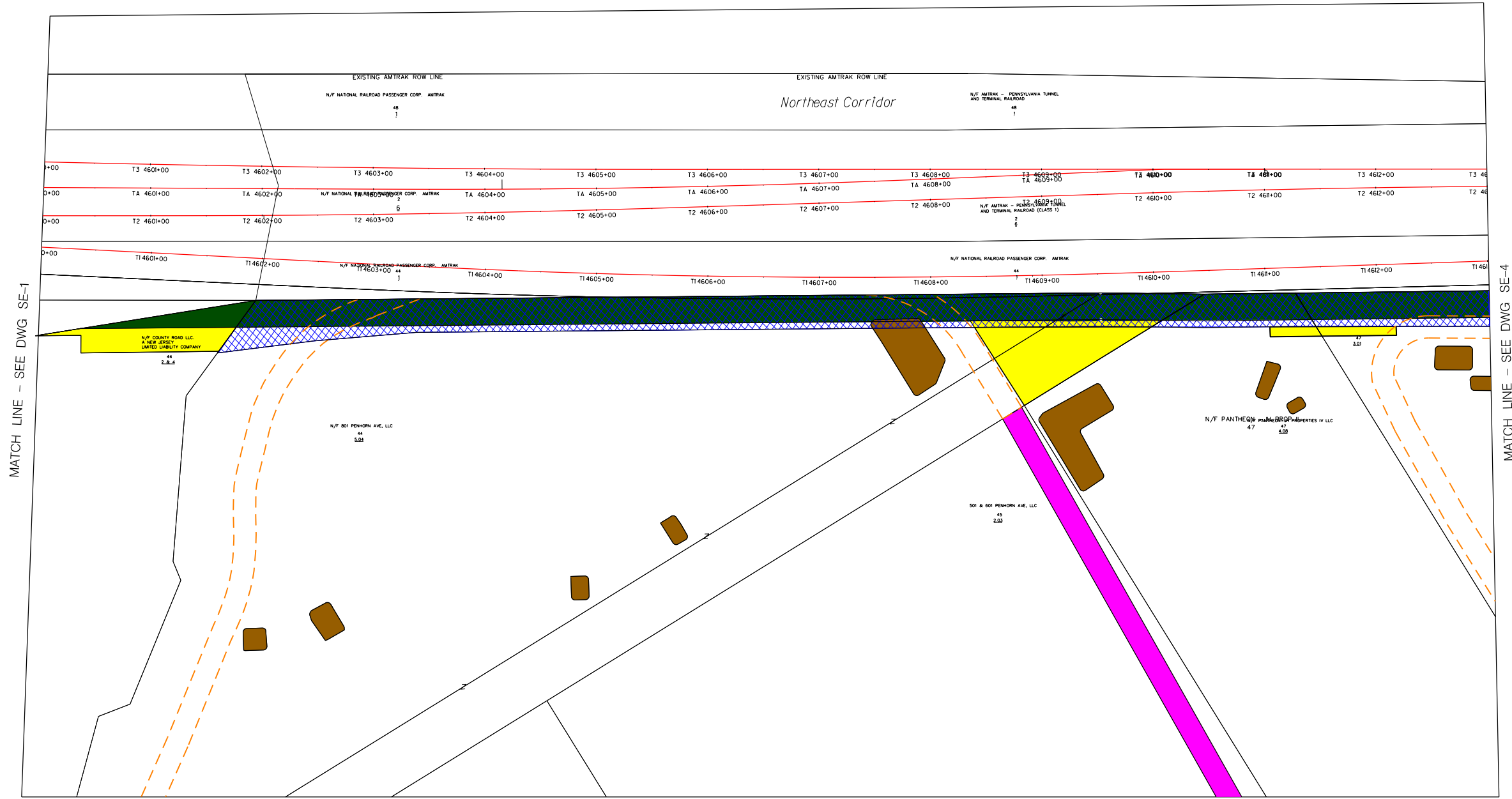
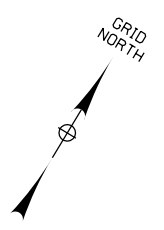
MAY 2021

LEGEND FOR SURFACE EASEMENT

-  PROPOSED PERMANENT CONSTRUCTION AND MAINTENANCE EASEMENT
-  PROPOSED TEMPORARY CONSTRUCTION EASEMENT
-  PROPOSED DRAINAGE EASEMENT
-  PROPOSED PERPETUAL ACCESS EASEMENT
-  ALIGNMENT /CENTERLINE OF TRACK
-  TEMPORARY SITE MITIGATION EASEMENT
-  DOMINANT ESTATE

NEWARK ←

NEW YORK →



MATCH LINE - SEE DWG SE-3

PLAN



This material is owned by and is the sole and exclusive property of the National Railroad Passenger Corporation (Amtrak), Office of Engineering, and is supplied on a confidential basis solely for use in connection with the design and construction of Amtrak facilities and equipment. The reproduction, display, sale or other disposition of this document without the express written consent of the National Railroad Passenger Corporation, Office of Engineering, is prohibited.

HUDSON RIVER TUNNEL PROJECT

SURFACE EASEMENT LIMIT
SHEET 2 OF 8



The Gateway
Trans-Hudson
Partnership

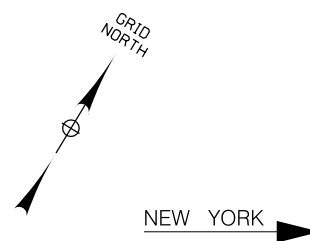
SE-2



MAY 2021

LEGEND FOR SURFACE EASEMENT

-  DOMINANT ESTATE
-  PROPOSED PERPETUAL ACCESS EASEMENT



← NEWARK

MATCH LINE – SEE DWG SE-2



PLAN



This material is owned by and is the sole and exclusive property of the National Railroad Passenger Corporation (Amtrak), Office of Engineering, and is supplied on a confidential basis solely for use in connection with the design and construction of Amtrak facilities and equipment. The reproduction, display, sale or other disposition of this document without the express written consent of the National Railroad Passenger Corporation, Office of Engineering, is prohibited.

HUDSON RIVER TUNNEL PROJECT

SURFACE EASEMENT LIMIT
SHEET 3 OF 8







The Gateway
Trans-Hudson
Partnership

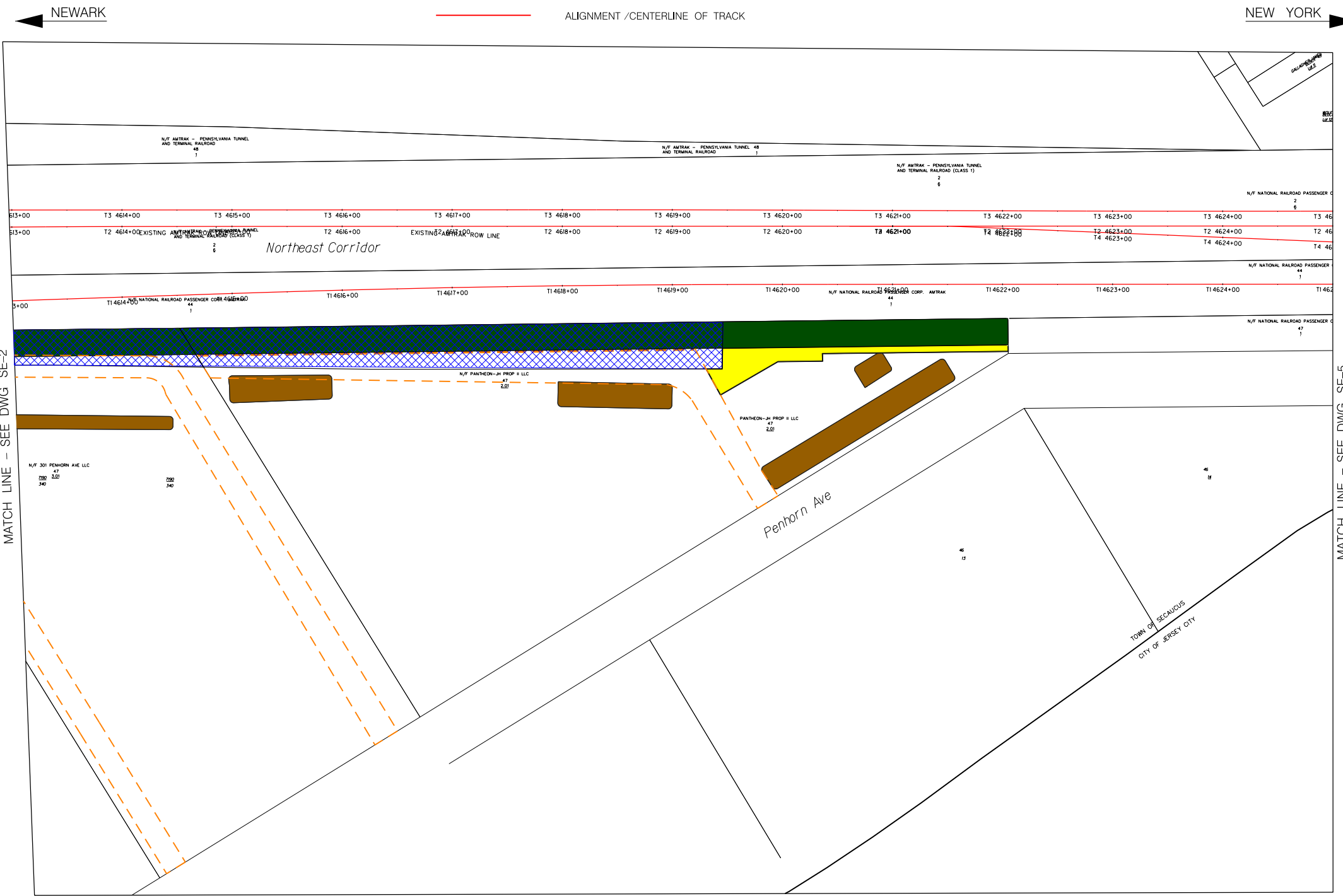
SE - 3



MAY 2021

LEGEND FOR SURFACE EASEMENT

-  PROPOSED PERMANENT CONSTRUCTION AND MAINTENANCE EASEMENT
-  PROPOSED TEMPORARY CONSTRUCTION EASEMENT
-  TEMPORARY SITE MITIGATION EASEMENT
-  PROPOSED DRAINAGE EASEMENT
-  PROPOSED PERPETUAL ACCESS EASEMENT
-  ALIGNMENT /CENTERLINE OF TRACK



MATCH LINE - SEE DWG SE-2

MATCH LINE - SEE DWG SE-5

PLAN



This material is owned by and is the sole and exclusive property of the National Railroad Passenger Corporation (Amtrak), Office of Engineering, and is supplied on a confidential basis solely for use in connection with the design and construction of Amtrak facilities and equipment. The reproduction, display, sale or other disposition of this document without the express written consent of the National Railroad Passenger Corporation, Office of Engineering, is prohibited.

HUDSON RIVER TUNNEL PROJECT

SURFACE EASEMENT LIMIT
SHEET 4 OF 8

The Gateway
Trans-Hudson
Partnership

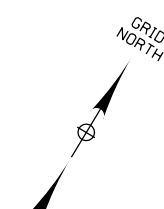
SE - 4



MAY 2021

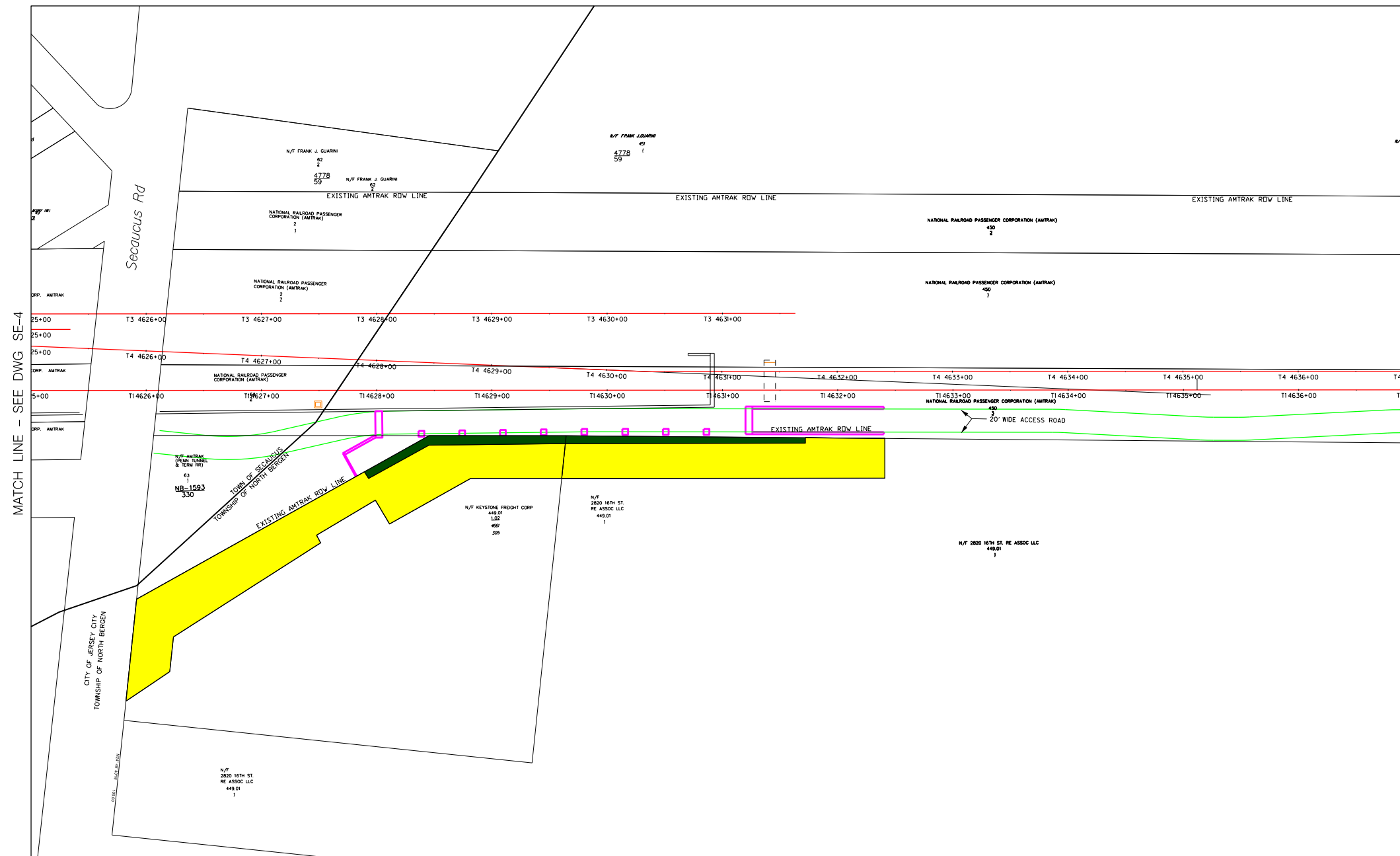
LEGEND FOR SURFACE EASEMENT

- PROPOSED PERMANENT CONSTRUCTION AND MAINTENANCE EASEMENT
- PROPOSED TEMPORARY CONSTRUCTION EASEMENT
- PROPOSED PERMANENT ACCEES ROAD
- ALIGNMENT /CENTERLINE OF TRACK



← NEWARK

NEW YORK →



PLAN



This material is owned by and is the sole and exclusive property of the National Railroad Passenger Corporation (Amtrak), Office of Engineering, and is supplied on a confidential basis solely for use in connection with the design and construction of Amtrak facilities and equipment. The reproduction, display, sale or other disposition of this document without the express written consent of the National Railroad Passenger Corporation, Office of Engineering, is prohibited.

HUDSON RIVER TUNNEL PROJECT

SURFACE EASEMENT LIMIT
SHEET 5 OF 8




The Gateway
Trans-Hudson
Partnership

SE - 5



MAY 2021

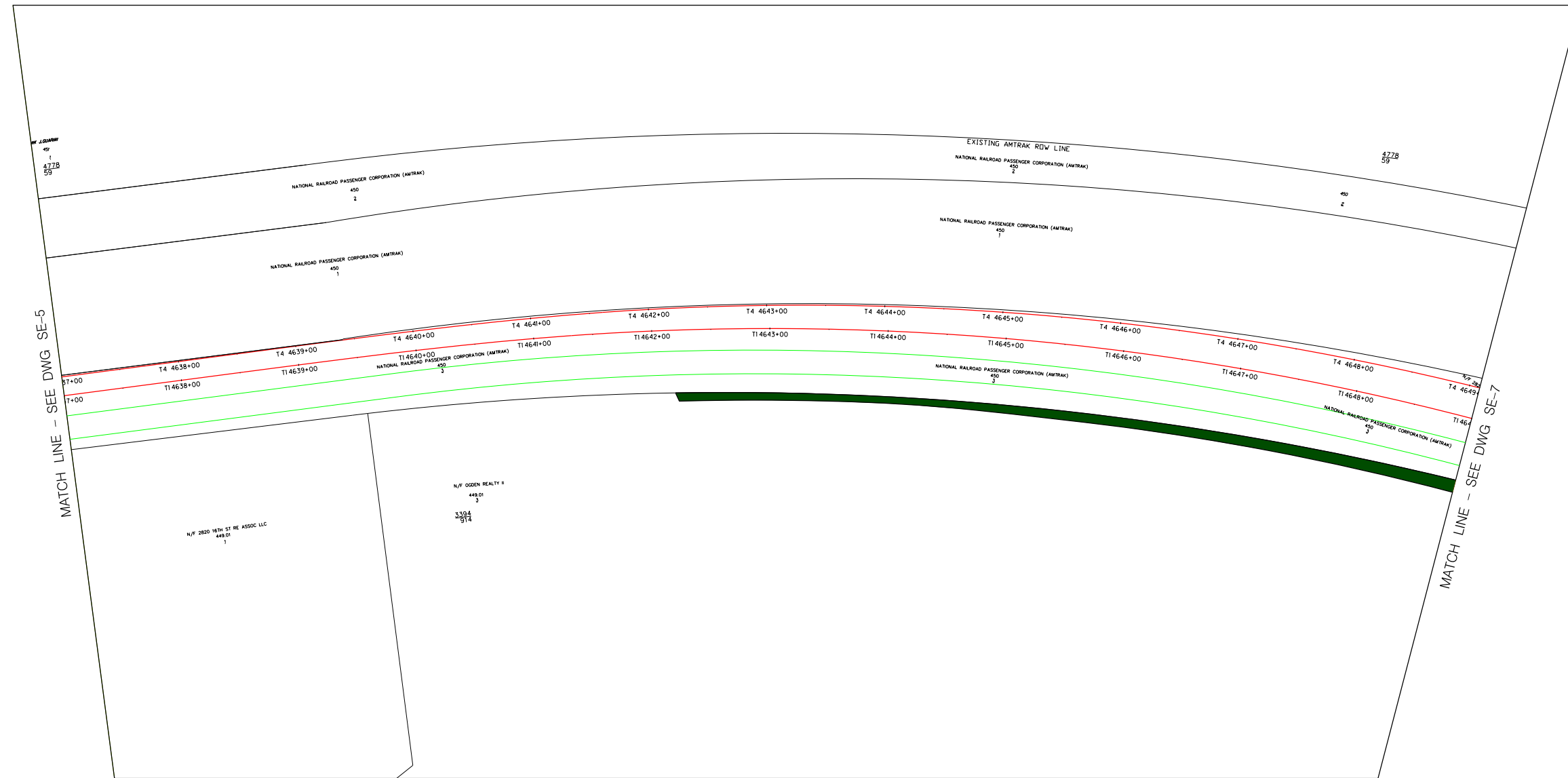
LEGEND FOR SURFACE EASEMENT

-  PROPOSED PERMANENT CONSTRUCTION AND MAINTENANCE EASEMENT
-  ALIGNMENT /CENTERLINE OF TRACK
-  PROPOSED ACCESS ROAD

← NEWARK

NEW YORK →

GRID NORTH



PLAN



Amtrak®

This material is owned by and is the sole and exclusive property of the National Railroad Passenger Corporation (Amtrak), Office of Engineering, and is supplied on a confidential basis solely for use in connection with the design and construction of Amtrak facilities and equipment. The reproduction, display, sale or other disposition of this document without the express written consent of the National Railroad Passenger Corporation, Office of Engineering, is prohibited.

HUDSON RIVER TUNNEL PROJECT

SURFACE EASEMENT LIMIT
SHEET 6 OF 8





The Gateway
Trans-Hudson
Partnership

SE - 6

AZCOM • WSP | PARSONS BRINCKERHOFF • STV

MAY 2021

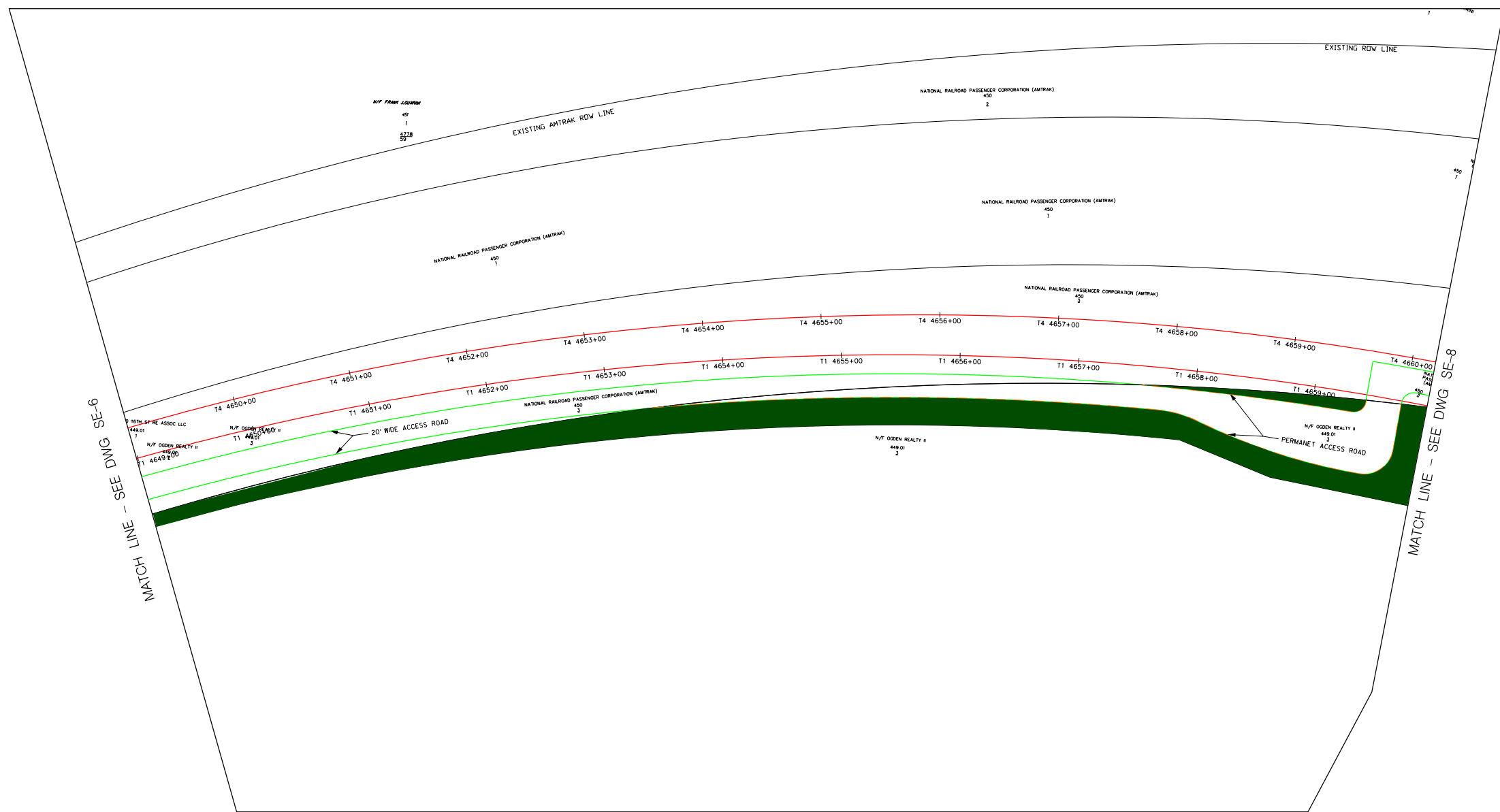
LEGEND FOR SURFACE EASEMENT

-  PROPOSED PERMANENT CONSTRUCTION AND MAINTENANCE EASEMENT
-  PROPOSED PERPETUAL ACCESS EASEMENT
-  PROPOSED PERMANENT ACCESS ROAD
-  ALIGNMENT /CENTERLINE OF TRACK

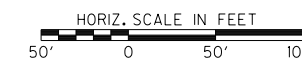
← NEWARK

NEW YORK →

GRID NORTH



PLAN



Amtrak[®]

HUDSON RIVER TUNNEL PROJECT

The Gateway
Trans-Hudson
Partnership

SE - 7

SURFACE EASEMENT LIMIT
SHEET 7 OF 8

AZCOM • WSP | PARSONS BRINCKERHOFF • STV 100

MAY 2021

This material is owned by and is the sole and exclusive property of the National Railroad Passenger Corporation (Amtrak), Office of Engineering, and is supplied on a confidential basis solely for use in connection with the design and construction of Amtrak facilities and equipment. The reproduction, display, sale or other disposition of this document without the express written consent of the National Railroad Passenger Corporation, Office of Engineering, is prohibited.

LEGEND FOR SURFACE EASEMENT

- PROPOSED PERMANENT CONSTRUCTION AND MAINTENANCE EASEMENT
- PROPOSED TEMPORARY CONSTRUCTION EASEMENT
- PREVIOUSLY ACQUIRED PARCEL AREA
- PROPOSED BRIDGE EASEMENT
- ALIGNMENT /CENTERLINE OF TRACK
- PROPOSED PERMANENT SUB-SURFACE EASEMENT (PSSE)
- SERVIENT PARCEL /DOMINANT ESTATE

NEWARK ←

NEW YORK →



PLAN



HUDSON RIVER TUNNEL PROJECT

SURFACE EASEMENT LIMIT
SHEET 8 OF 8

The Gateway
Trans-Hudson
Partnership

SE-8

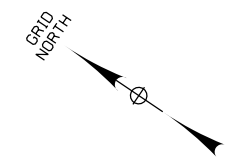


MAY 2021

This material is owned by and is the sole and exclusive property of the National Railroad Passenger Corporation (Amtrak), Office of Engineering, and is supplied on a confidential basis solely for use in connection with the design and construction of Amtrak facilities and equipment. The reproduction, display, sale or other disposition of this document without the express written consent of the National Railroad Passenger Corporation, Office of Engineering, is prohibited.

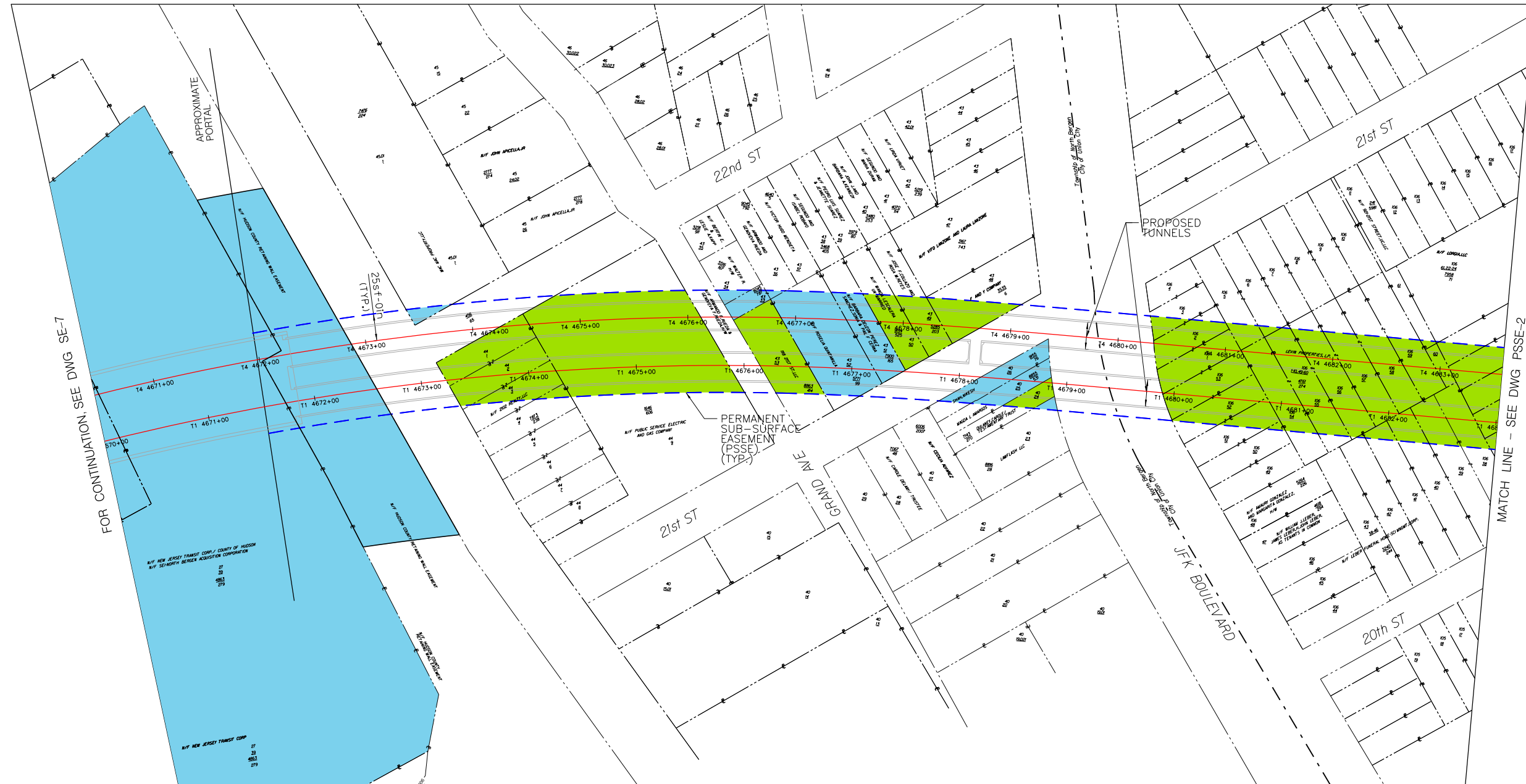
LEGEND FOR SUB-SURFACE EASEMENT

- PREVIOUSLY ACQUIRED PARCEL AREA
- PROPOSED PERMANENT SUB-SURFACE EASEMENT PARCEL AREA
- PERMANENT SUB-SURFACE EASEMENT LIMIT (PSSE)
- ALIGNMENT /CENTERLINE OF TRACK



← NEWARK

NEW YORK →



PLAN



HUDSON RIVER TUNNEL PROJECT
SUB-SURFACE EASEMENT LIMIT
SHEET 1 OF 11

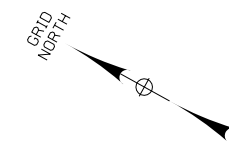
The Gateway Trans-Hudson Partnership
PSSE - 1
AZCOM • WSP | PARSONS BRINCKERHOFF • STV

MAY 2021

This material is owned by and is the sole and exclusive property of the National Railroad Passenger Corporation (Amtrak), Office of Engineering, and is supplied on a confidential basis solely for use in connection with the design and construction of Amtrak facilities and equipment. The reproduction, display, sale or other disposition of this document without the express written consent of the National Railroad Passenger Corporation, Office of Engineering, is prohibited.

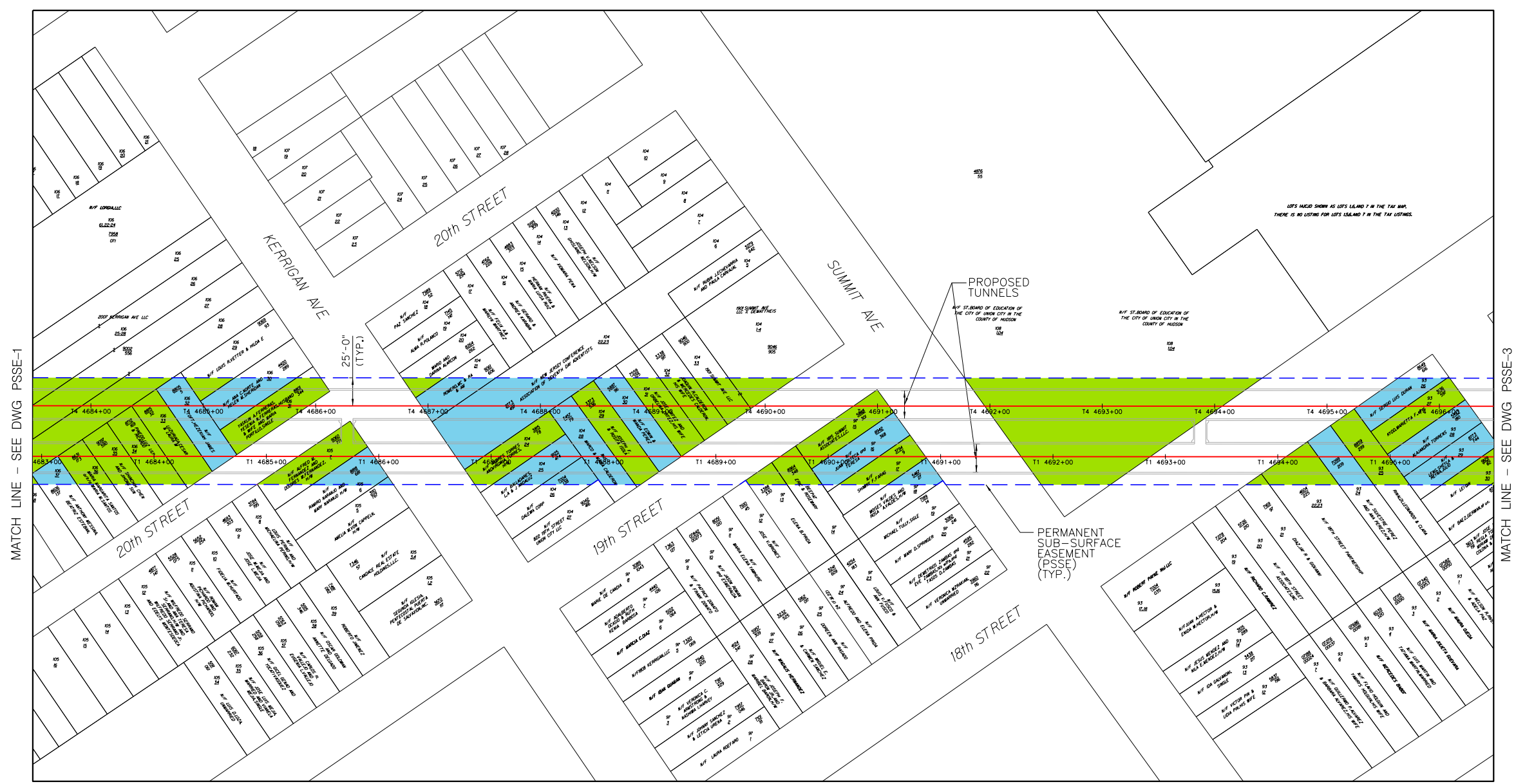
LEGEND FOR SUB-SURFACE EASEMENT

- PREVIOUSLY ACQUIRED PARCEL AREA
- PROPOSED PERMANENT SUB-SURFACE EASEMENT PARCEL AREA
- PERMANENT SUB-SURFACE EASEMENT LIMIT (PSSE)
- ALIGNMENT /CENTERLINE OF TRACK



← NEWARK

NEW YORK →



PLAN



HUDSON RIVER TUNNEL PROJECT
SUB-SURFACE EASEMENT LIMIT
SHEET 2 OF 11

The Gateway
Trans-Hudson
Partnership

PSSE - 2

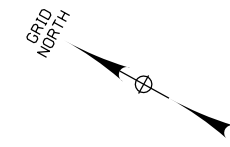
AECOM • WSP | PARSONS BRINCKERHOFF • STV

This material is owned by and is the sole and exclusive property of the National Railroad Passenger Corporation (Amtrak), Office of Engineering, and is supplied on a confidential basis solely for use in connection with the design and construction of Amtrak facilities and equipment. The reproduction, display, sale or other disposition of this document without the express written consent of the National Railroad Passenger Corporation, Office of Engineering, is prohibited.

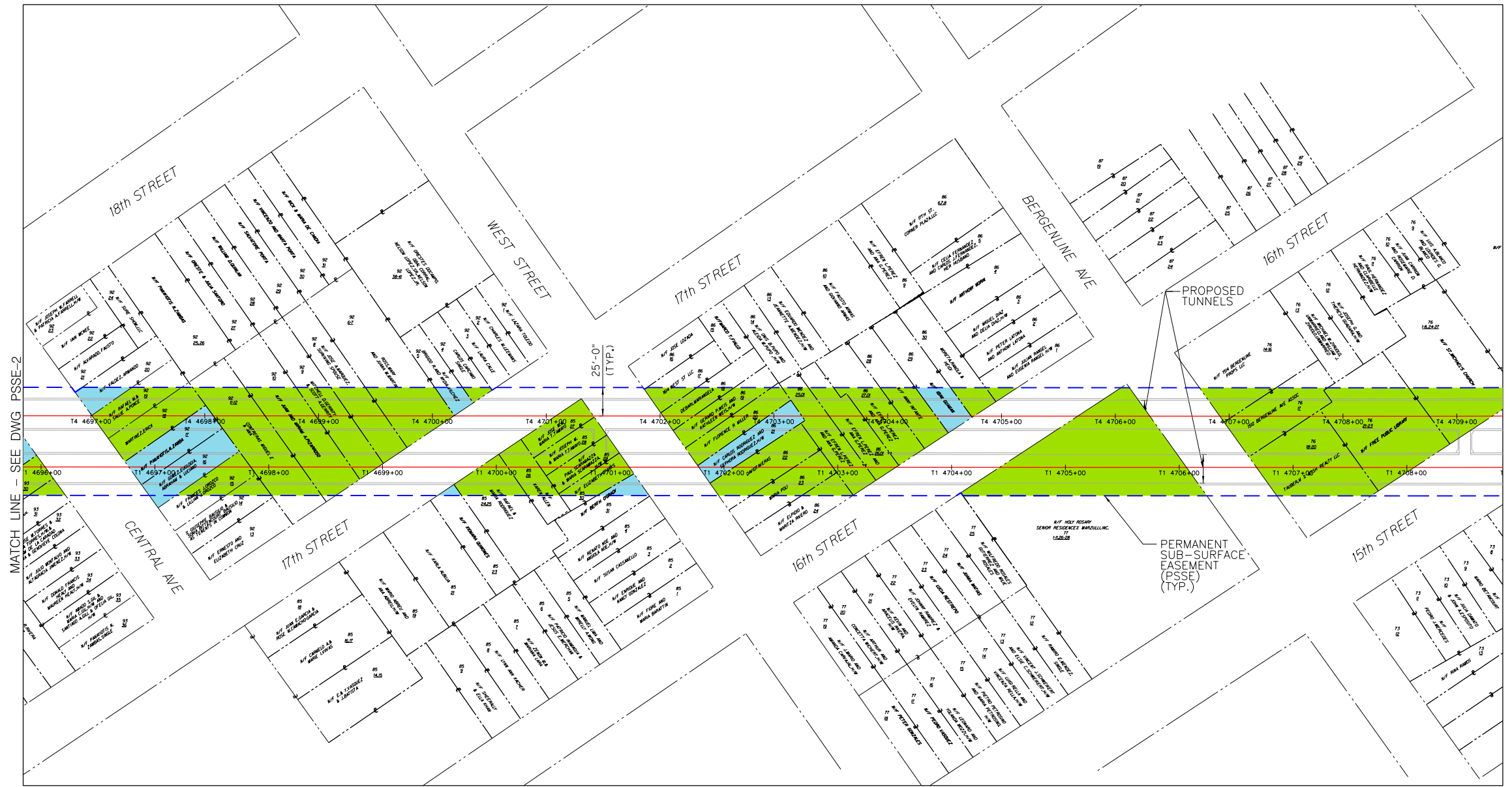
MAY 2021

LEGEND FOR SUB-SURFACE EASEMENT

- PREVIOUSLY ACQUIRED PARCEL AREA
- PROPOSED PERMANENT SUB-SURFACE EASEMENT PARCEL AREA
- ALIGNMENT /CENTERLINE OF TRACK
- PERMANENT SUB-SURFACE EASEMENT LIMIT (PSSE)



← NEWARK
NEW YORK →



PLAN



HUDSON RIVER TUNNEL PROJECT
SUB-SURFACE EASEMENT LIMIT
SHEET 3 OF 11

PSSE - 3

**The Gateway
Trans-Hudson
Partnership**

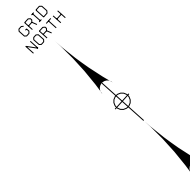
AZCOM • WSP | PARSONS BRINCKERHOFF • STV 100

This material is owned by and is the sole and exclusive property of the National Railroad Passenger Corporation (Amtrak), Office of Engineering, and is supplied on a confidential basis solely for use in connection with the design and construction of Amtrak facilities and equipment. The reproduction, display, sale or other disposition of this document without the express written consent of the National Railroad Passenger Corporation, Office of Engineering, is prohibited.

MAY 2021

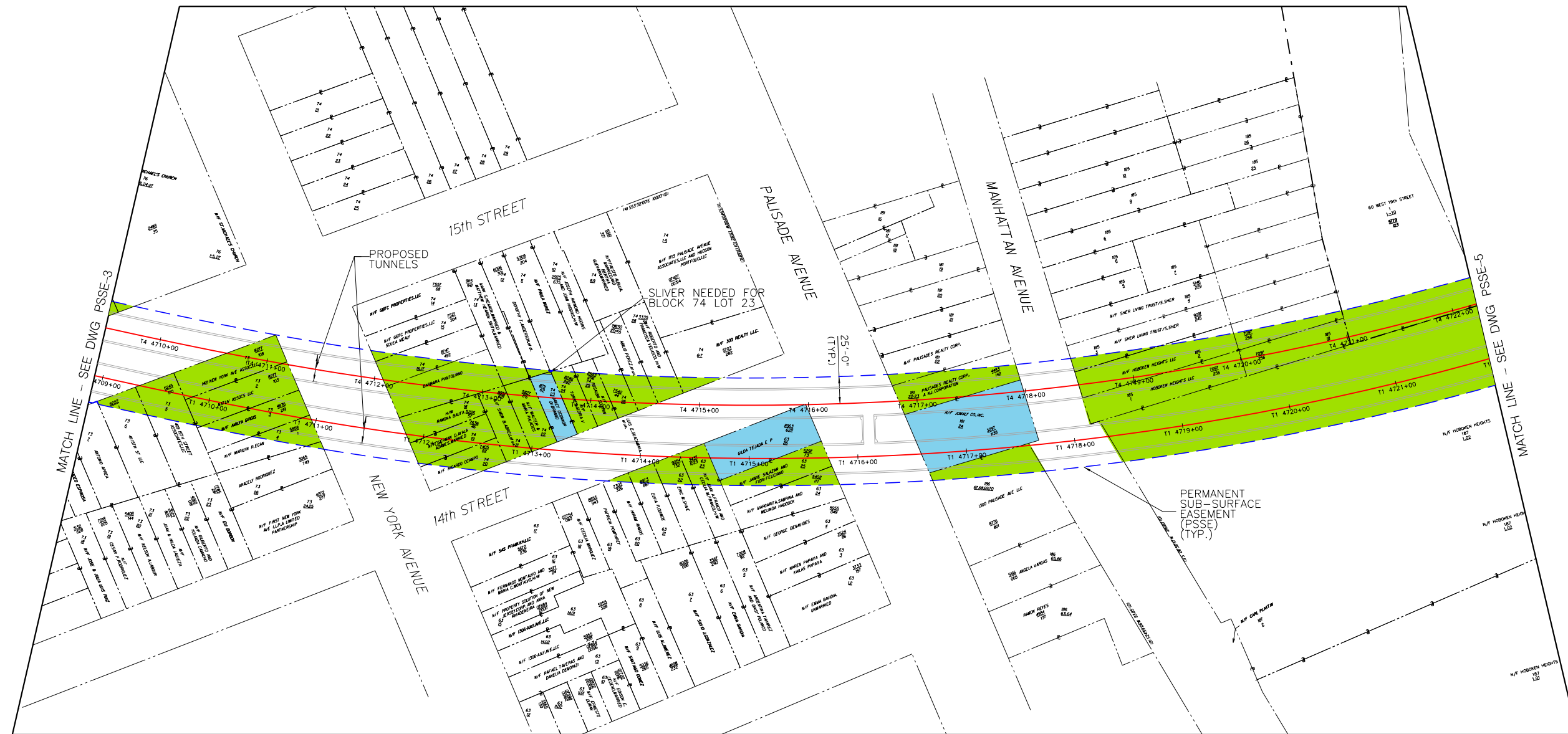
LEGEND FOR SUB-SURFACE EASEMENT

- PREVIOUSLY ACQUIRED PARCEL AREA
- PROPOSED PERMANENT SUB-SURFACE EASEMENT PARCEL AREA
- ALIGNMENT /CENTERLINE OF TRACK
- PERMANENT SUB-SURFACE EASEMENT LIMIT (PSSE)

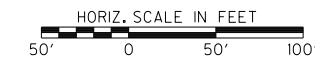


NEWARK ←

NEW YORK →



PLAN



This material is owned by and is the sole and exclusive property of the National Railroad Passenger Corporation (Amtrak), Office of Engineering, and is supplied on a confidential basis solely for use in connection with the design and construction of Amtrak facilities and equipment. The reproduction, display, sale or other disposition of this document without the express written consent of the National Railroad Passenger Corporation, Office of Engineering, is prohibited.

HUDSON RIVER TUNNEL PROJECT
SUB-SURFACE EASEMENT LIMIT
SHEET 4 OF 11

The Gateway
Trans-Hudson
Partnership

PSSE - 4



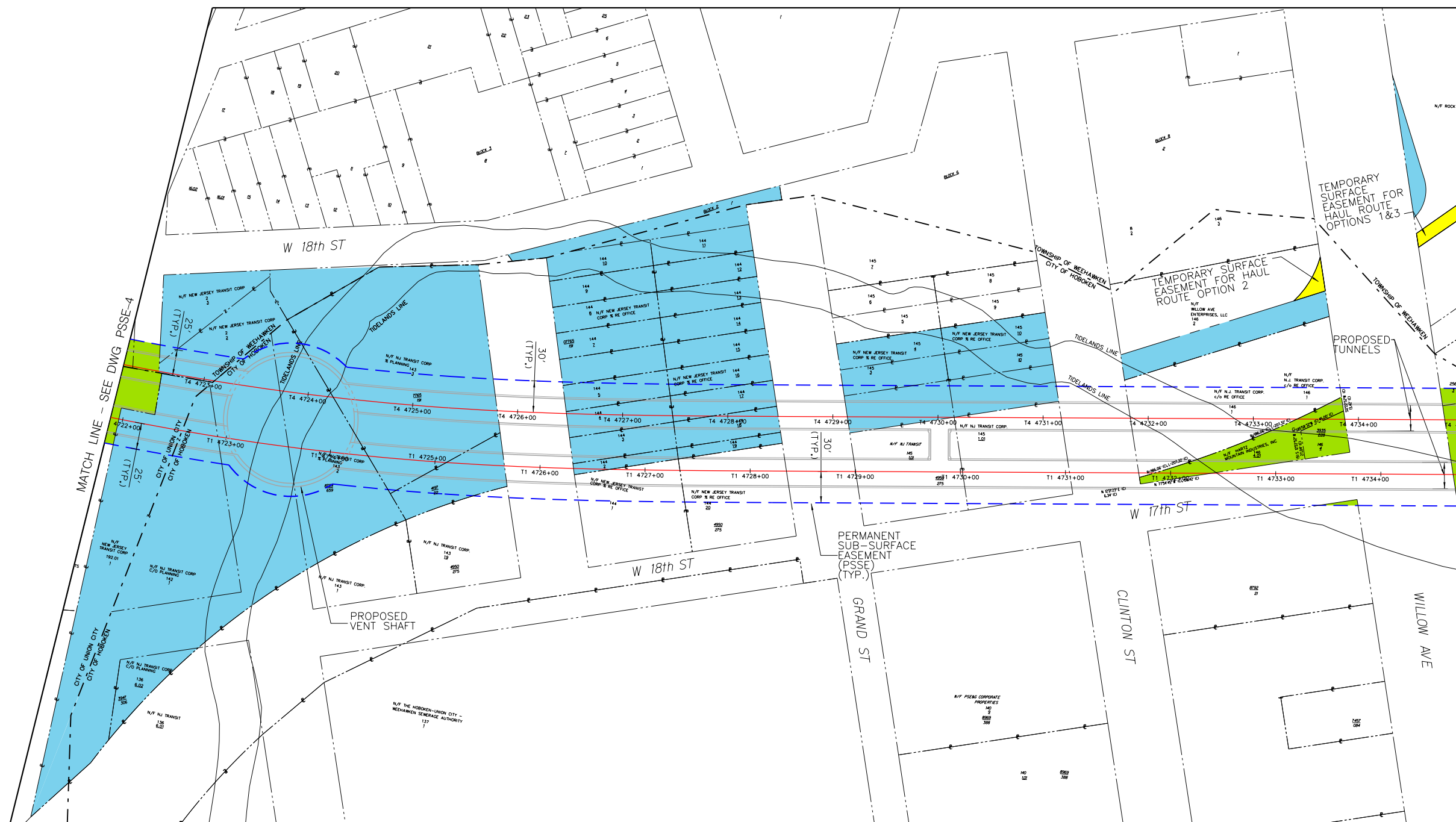
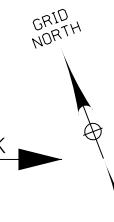
MAY 2021

LEGEND FOR SUB-SURFACE EASEMENT

- PREVIOUSLY ACQUIRED PARCEL AREA
- PROPOSED PERMANENT SUB-SURFACE EASEMENT PARCEL AREA
- PROPOSED TEMPORARY SURFACE EASEMENT
- ALIGNMENT /CENTERLINE OF TRACK
- PERMANENT SUB-SURFACE EASEMENT LIMIT (PSSE)

NEWARK ←

NEW YORK →



MATCH LINE - SEE DWG PSSE-4

MATCH LINE - SEE DWG PSSE-6

PLAN



HUDSON RIVER TUNNEL PROJECT
SUB-SURFACE EASEMENT LIMIT

SHEET 5 OF 11

The Gateway
Trans-Hudson
Partnership

PSSE - 5

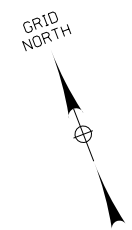


MAY 2021

This material is owned by and is the sole and exclusive property of the National Railroad Passenger Corporation (Amtrak), Office of Engineering, and is supplied on a confidential basis solely for use in connection with the design and construction of Amtrak facilities and equipment. The reproduction, display, sale or other disposition of this document without the express written consent of the National Railroad Passenger Corporation, Office of Engineering, is prohibited.

LEGEND FOR SUB-SURFACE EASEMENT

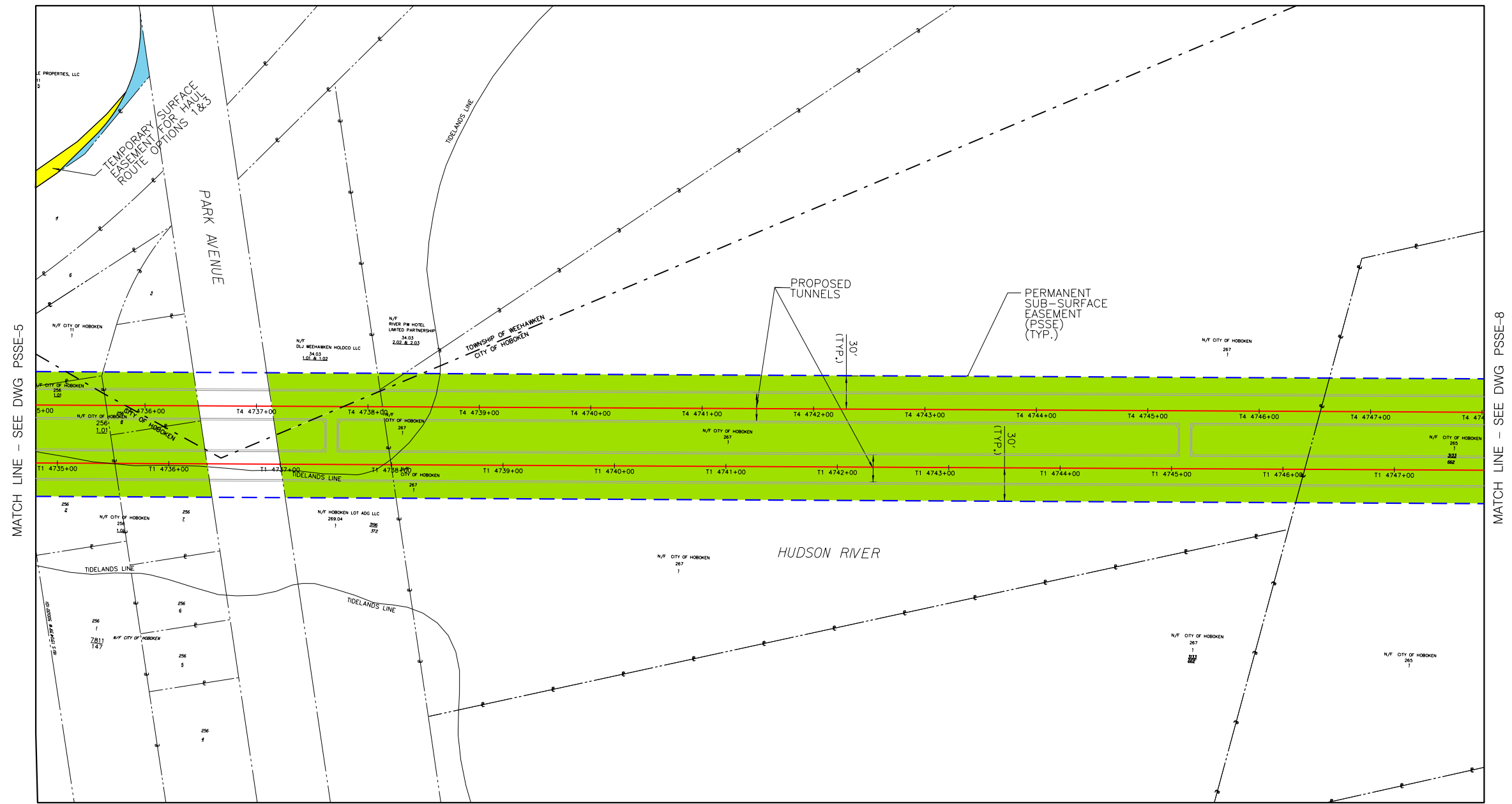
- PREVIOUSLY ACQUIRED PARCEL AREA
- TEMPORARY SURFACE EASEMENT
- PROPOSED PERMANENT SUB-SURFACE EASEMENT PARCEL AREA
- ALIGNMENT CENTERLINE OF TRACK
- PERMANENT SUB-SURFACE EASEMENT LIMIT (PSSE)



← NEWARK

NEW YORK →

MATCH LINE – SEE DWG PSSE-7



PLAN



HUDSON RIVER TUNNEL PROJECT
SUB-SURFACE EASEMENT LIMIT
SHEET 6 OF 11

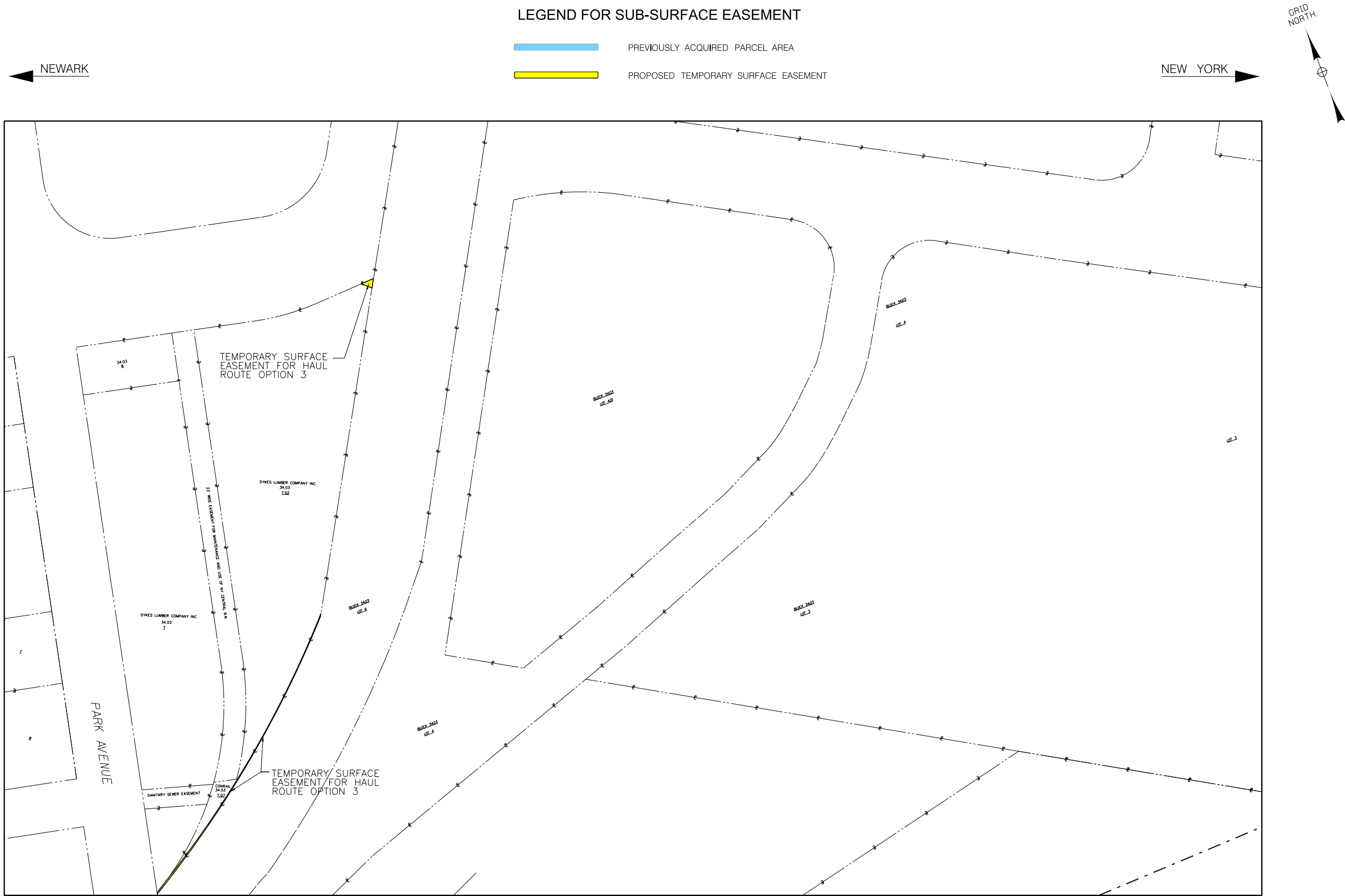
The Gateway Trans-Hudson Partnership PSSE - 6
 AZCOM • WSP | PARSONS BRINCKERHOFF • STV

MAY 2021

This material is owned by and is the sole and exclusive property of the National Railroad Passenger Corporation (Amtrak), Office of Engineering, and is supplied on a confidential basis solely for use in connection with the design and construction of Amtrak facilities and equipment. The reproduction, display, sale or other disposition of this document without the express written consent of the National Railroad Passenger Corporation, Office of Engineering, is prohibited.

LEGEND FOR SUB-SURFACE EASEMENT

- PREVIOUSLY ACQUIRED PARCEL AREA
- PROPOSED TEMPORARY SURFACE EASEMENT



MATCH LINE - SEE DWG PSSE-6

PLAN



This material is owned by and is the sole and exclusive property of the National Railroad Passenger Corporation (Amtrak), Office of Engineering, and is supplied on a confidential basis solely for use in connection with the design and construction of Amtrak facilities and equipment. The reproduction, display, sale or other disposition of this document without the express written consent of the National Railroad Passenger Corporation, Office of Engineering, is prohibited.

HUDSON RIVER TUNNEL PROJECT
SUB-SURFACE EASEMENT LIMIT
SHEET 7 OF 11

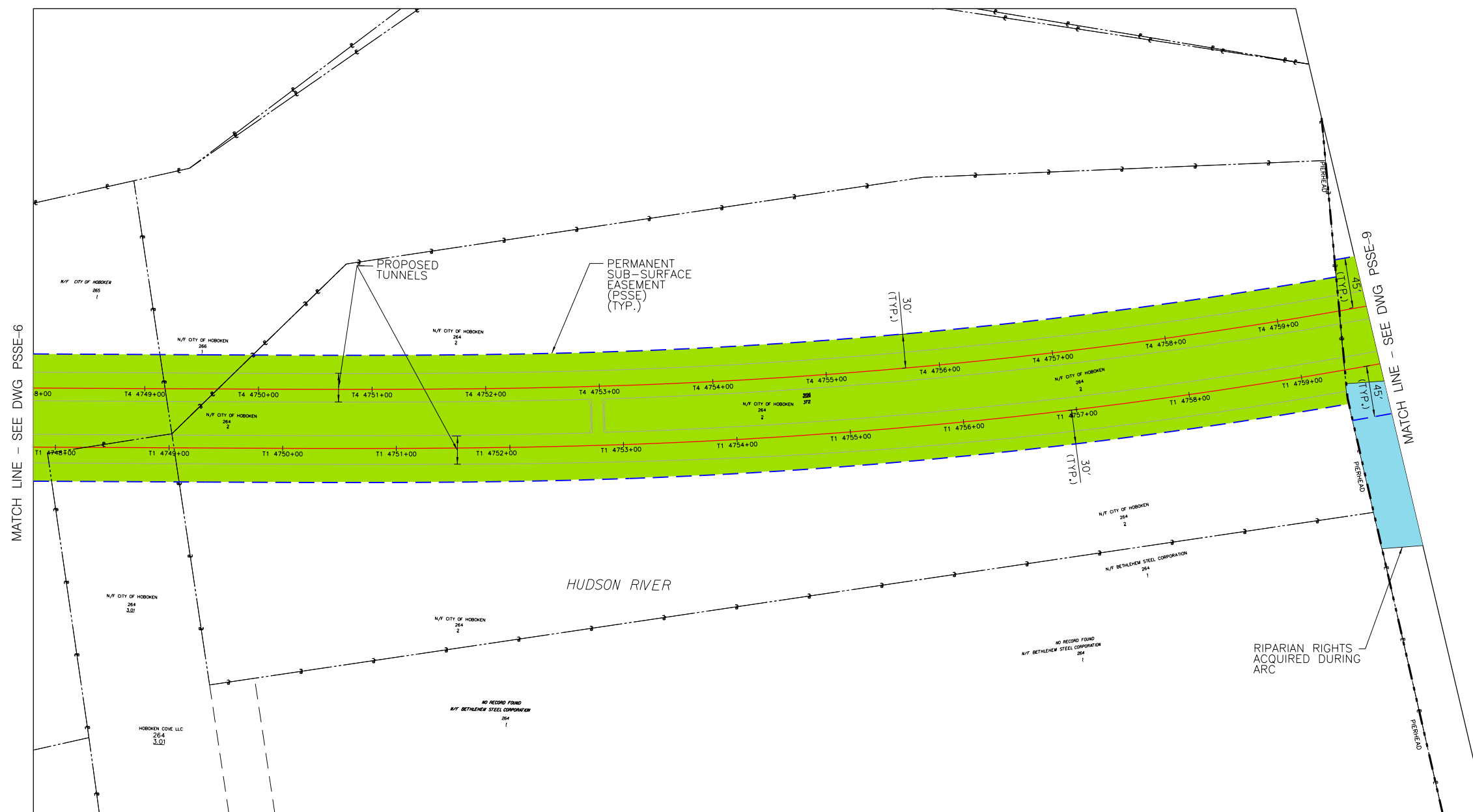
The Gateway Trans-Hudson Partnership PSSE - 7
AZCOM • **WSP** | PARSONS BRINCKERHOFF • **STV** 100
 MAY 2021

LEGEND FOR SUB-SURFACE EASEMENT

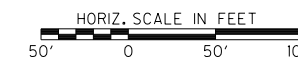
- PREVIOUSLY ACQUIRED PARCEL AREA
- PROPOSED PERMANENT SUB-SURFACE EASEMENT PARCEL AREA
- ALIGNMENT /CENTERLINE OF TRACK
- PERMANENT SUB-SURFACE EASEMENT LIMIT (PSSE)

NEWARK ←

NEW YORK →



PLAN



HUDSON RIVER TUNNEL PROJECT
SUB-SURFACE EASEMENT LIMIT
SHEET 8 OF 11

The Gateway
Trans-Hudson
Partnership

PSSE - 8

AZCOM • WSP | PARSONS BRINCKERHOFF • STV

MAY 2021

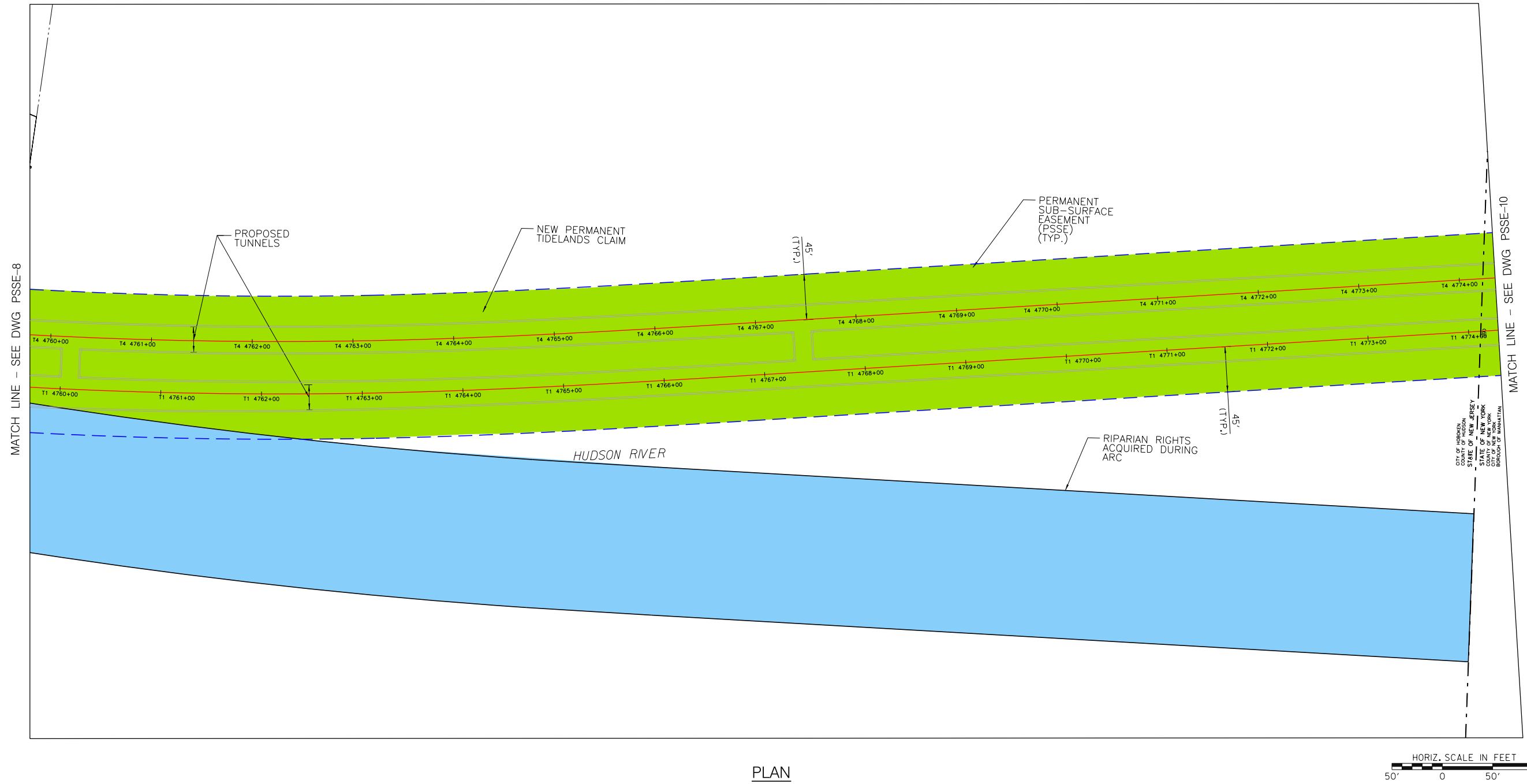
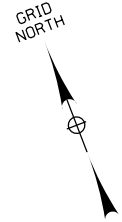
This material is owned by and is the sole and exclusive property of the National Railroad Passenger Corporation (Amtrak), Office of Engineering, and is supplied on a confidential basis solely for use in connection with the design and construction of Amtrak facilities and equipment. The reproduction, display, sale or other disposition of this document without the express written consent of the National Railroad Passenger Corporation, Office of Engineering, is prohibited.

LEGEND FOR SUB-SURFACE EASEMENT

- PREVIOUSLY ACQUIRED PARCEL AREA
- PROPOSED PERMANENT SUB-SURFACE EASEMENT PARCEL AREA
- ALIGNMENT /CENTERLINE OF TRACK
- PERMANENT SUB-SURFACE EASEMENT LIMIT (PSSE)

NEWARK ←

NEW YORK →



PLAN



This material is owned by and is the sole and exclusive property of the National Railroad Passenger Corporation (Amtrak), Office of Engineering, and is supplied on a confidential basis solely for use in connection with the design and construction of Amtrak facilities and equipment. The reproduction, display, sale or other disposition of this document without the express written consent of the National Railroad Passenger Corporation, Office of Engineering, is prohibited.

HUDSON RIVER TUNNEL PROJECT
SUB-SURFACE EASEMENT LIMIT
SHEET 9 OF 11

The Gateway
Trans-Hudson
Partnership

PSSE - 9

AZCOM • WSP | PARSONS BRINCKERHOFF • STV

MAY 2021

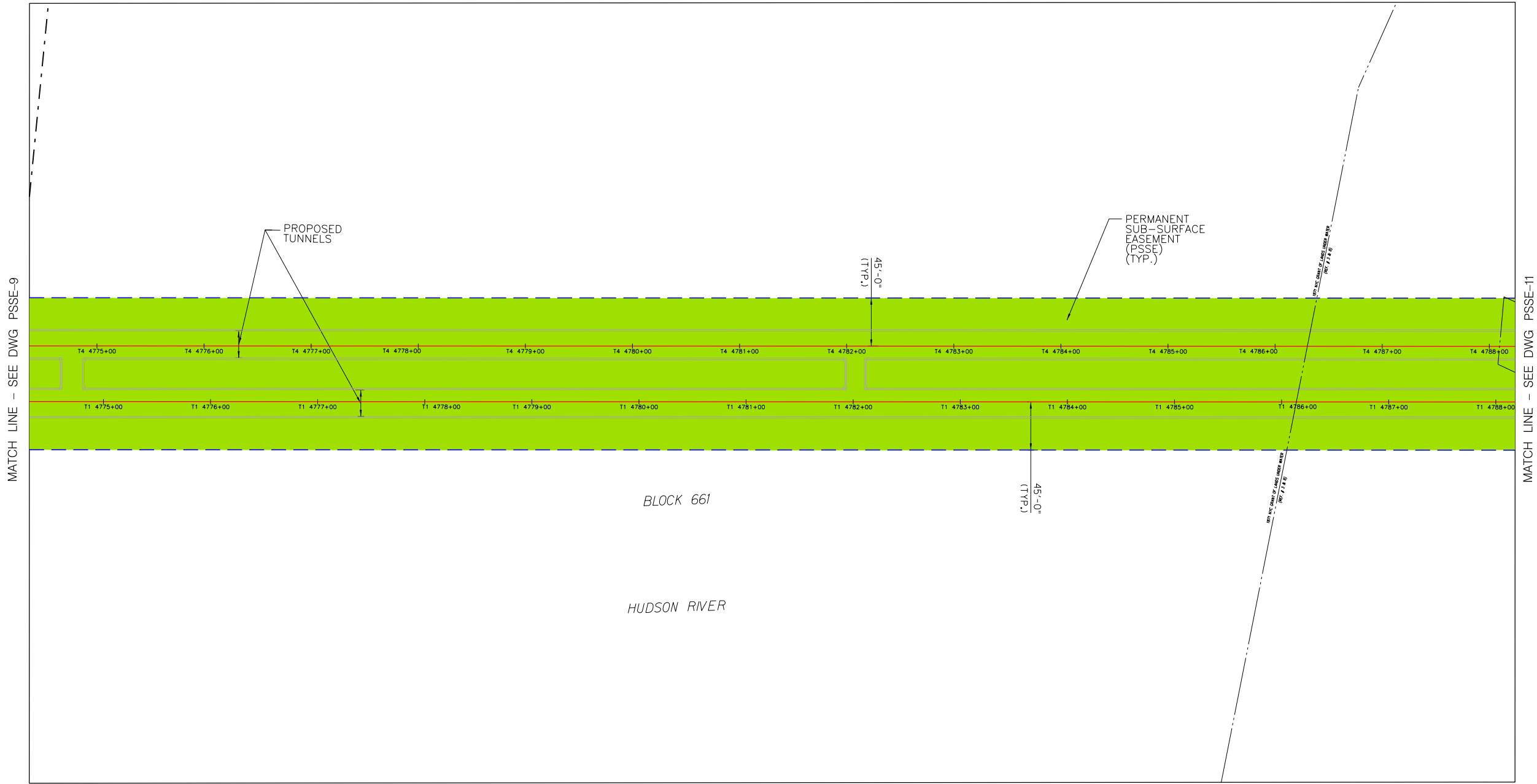
LEGEND FOR SUB-SURFACE EASEMENT

- PREVIOUSLY ACQUIRED PARCEL AREA
- PROPOSED PERMANENT SUB-SURFACE EASEMENT PARCEL AREA
- ALIGNMENT /CENTERLINE OF TRACK
- PERMANENT SUB-SURFACE EASEMENT LIMIT (PSSE)



NEWARK ←

NEW YORK →



PLAN











This material is owned by and is the sole and exclusive property of the National Railroad Passenger Corporation (Amtrak), Office of Engineering, and is supplied on a confidential basis solely for use in connection with the design and construction of Amtrak facilities and equipment. The reproduction, display, sale or other disposition of this document without the express written consent of the National Railroad Passenger Corporation, Office of Engineering, is prohibited.

HUDSON RIVER TUNNEL PROJECT
SUB-SURFACE EASEMENT LIMIT
SHEET 10 OF 11

The Gateway Trans-Hudson Partnership PSSE - 10
 AZCOM • WSP | PARSONS BRINCKERHOFF • STV 100

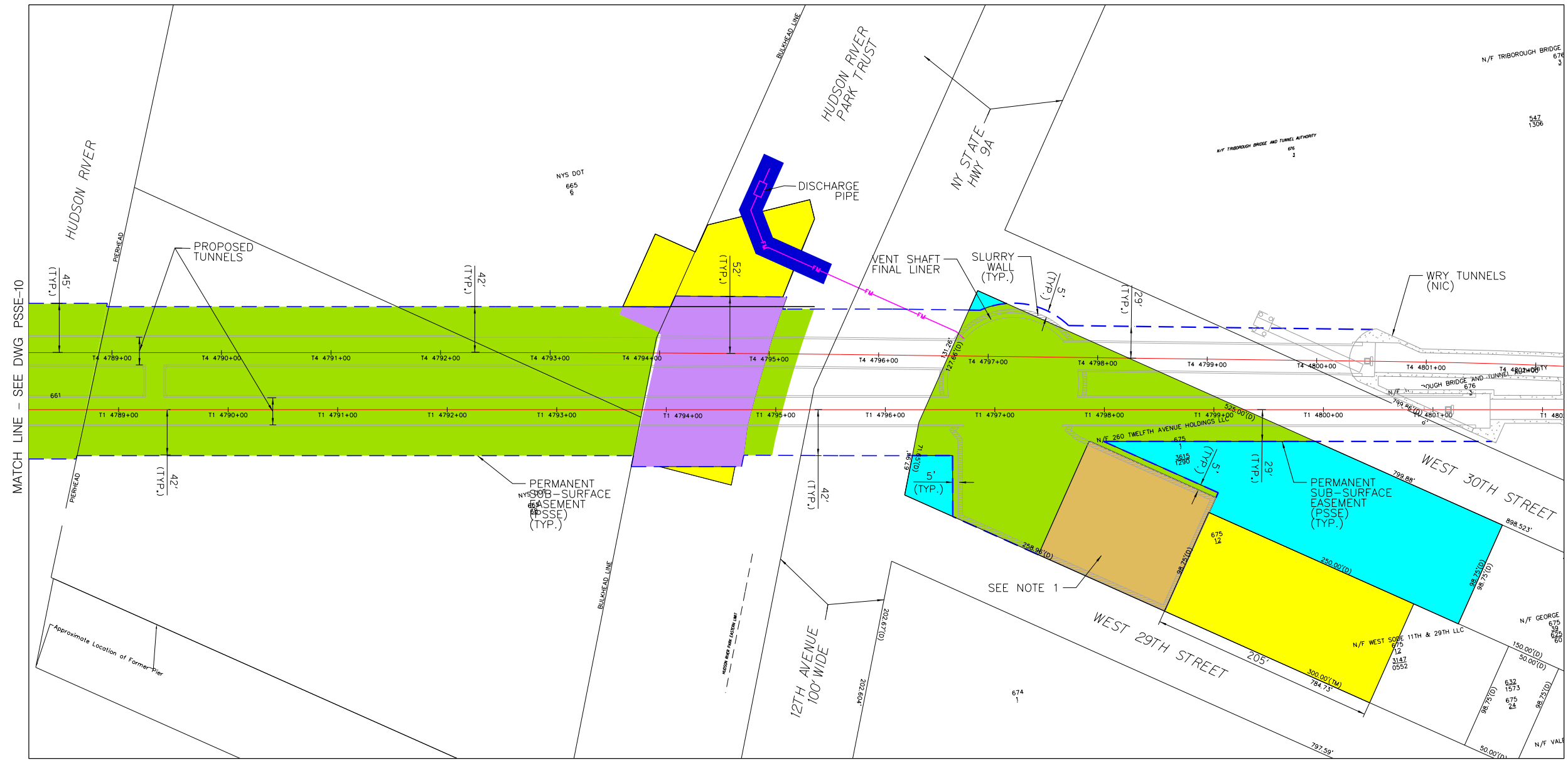
MAY 2021

LEGEND FOR SUB-SURFACE EASEMENT

	PROPOSED DRAINAGE EASEMENT		PROPOSED PERMANENT SURFACE, SUB-SURFACE & AERIAL EASEMENT PARCEL AREA
	PROPOSED PERMANENT SUB-SURFACE EASEMENT PARCEL AREA		PROPOSED PERMANENT SURFACE EASEMENT PARCEL AREA
	PROPOSED TEMPORARY SURFACE EASEMENT		ALIGNMENT /CENTERLINE OF TRACK
	PROPOSED PERMANENT SUB-SURFACE & TEMPORARY SURFACE EASEMENTS		PERMANENT SUB-SURFACE EASEMENT (PSSE)

NEWARK ←

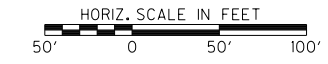
NEW YORK →



PLAN

NOTES:

1. THE NORTH WEST CORNER OF BLOCK 675, LOT 1 IS AN ALTERNATE LOCATION FOR THE FAN PLANT BUILDING. THIS LOCATION IS OVER THE SHAFT AND THIS AREA REQUIRES THE ACQUISITION OF PERMANENT SURFACE AND AERIAL EASEMENT.



HUDSON RIVER TUNNEL PROJECT
SUB-SURFACE EASEMENT LIMIT
SHEET 11 OF 11

The Gateway Trans-Hudson Partnership
PSSE - 11
AZCOM • WSP | PARSONS BRINCKERHOFF • STV

MAY 2011

This material is owned by and is the sole and exclusive property of the National Railroad Passenger Corporation (Amtrak), Office of Engineering, and is supplied on a confidential basis solely for use in connection with the design and construction of Amtrak facilities and equipment. The reproduction, display, sale or other disposition of this document without the express written consent of the National Railroad Passenger Corporation, Office of Engineering, is prohibited.