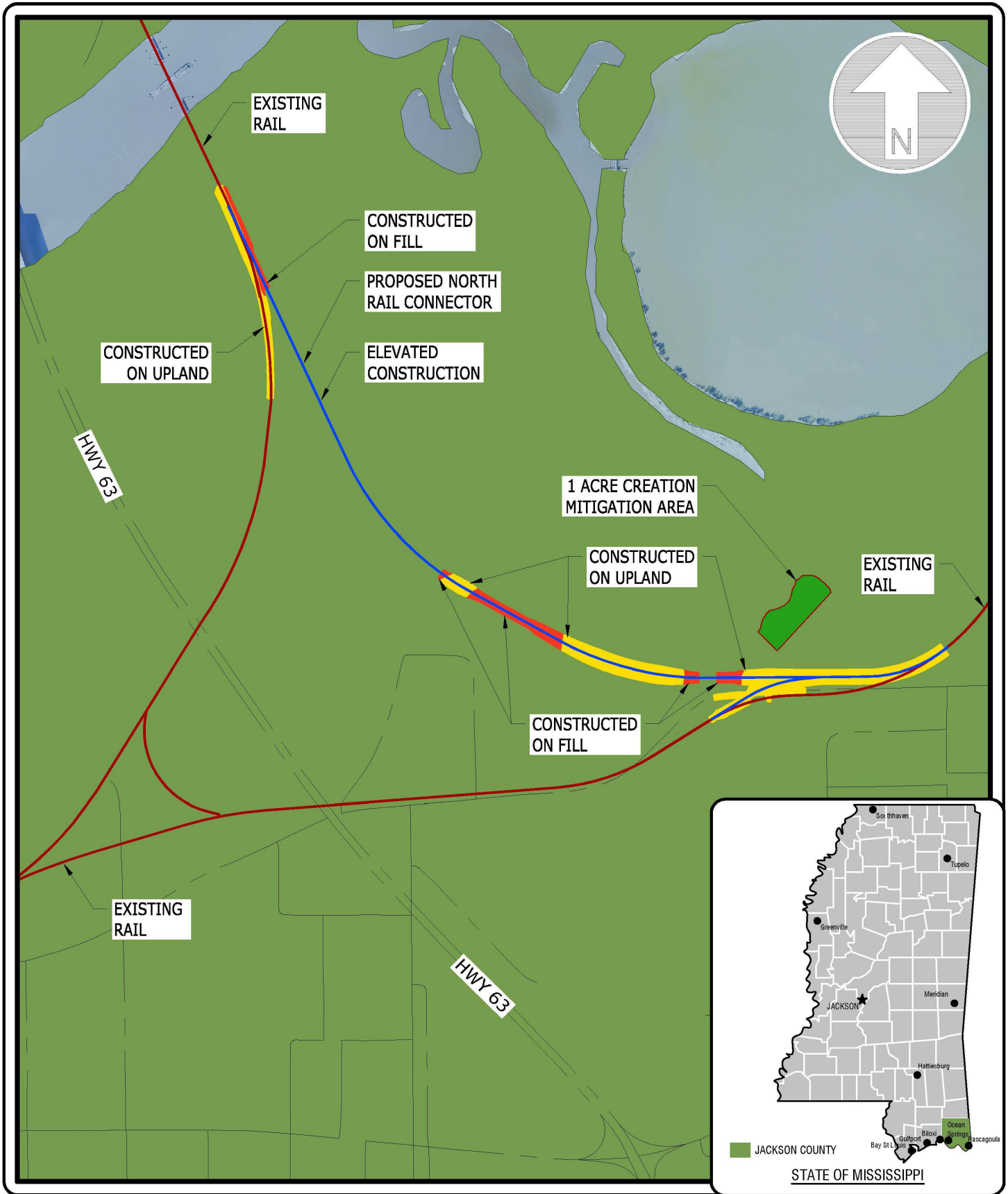


Appendix A – Figures

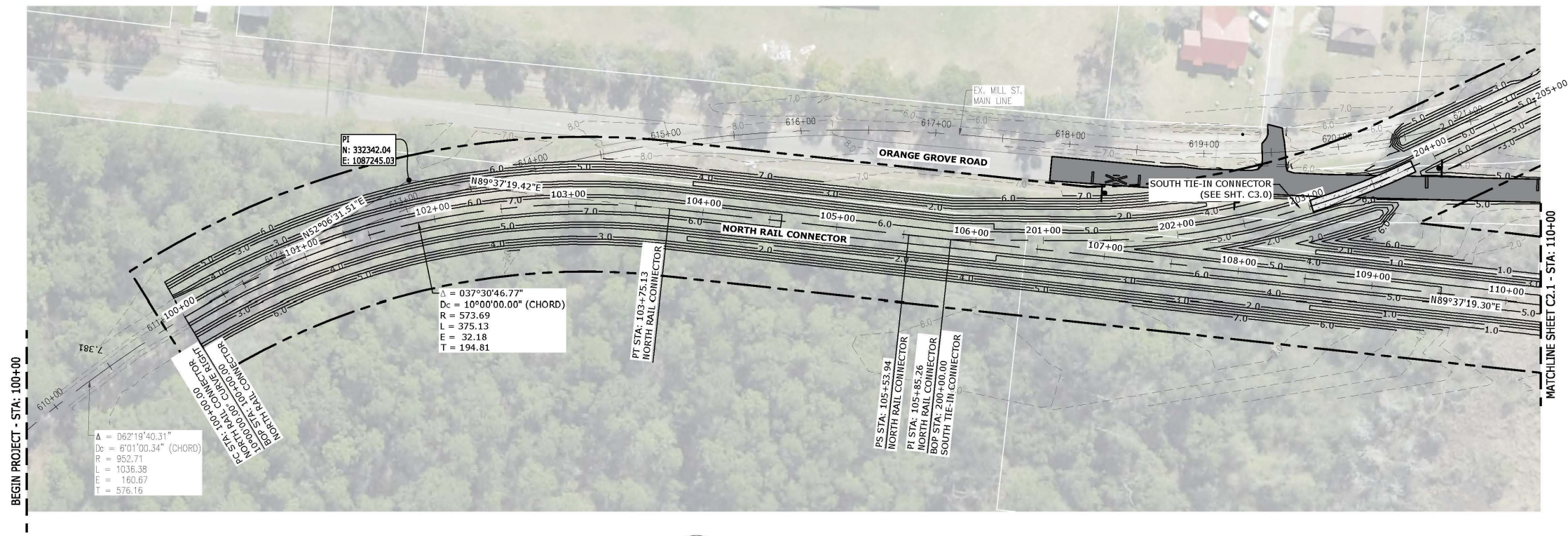
- Project Overview Map
- Project Detail Sheets, C2.0-C2.3
- Alternative Project Locations

S:\Pascagoula\0-Projects\2018\218-051 JCPA - North Rail Connector\Envir\Permitting\Reports\DWGS\218-051 APPENDIX A PROJECT OVERVIEW MAP REV A.dwg, 4/22/2021 10:19:53 AM, Joseph, 1:1

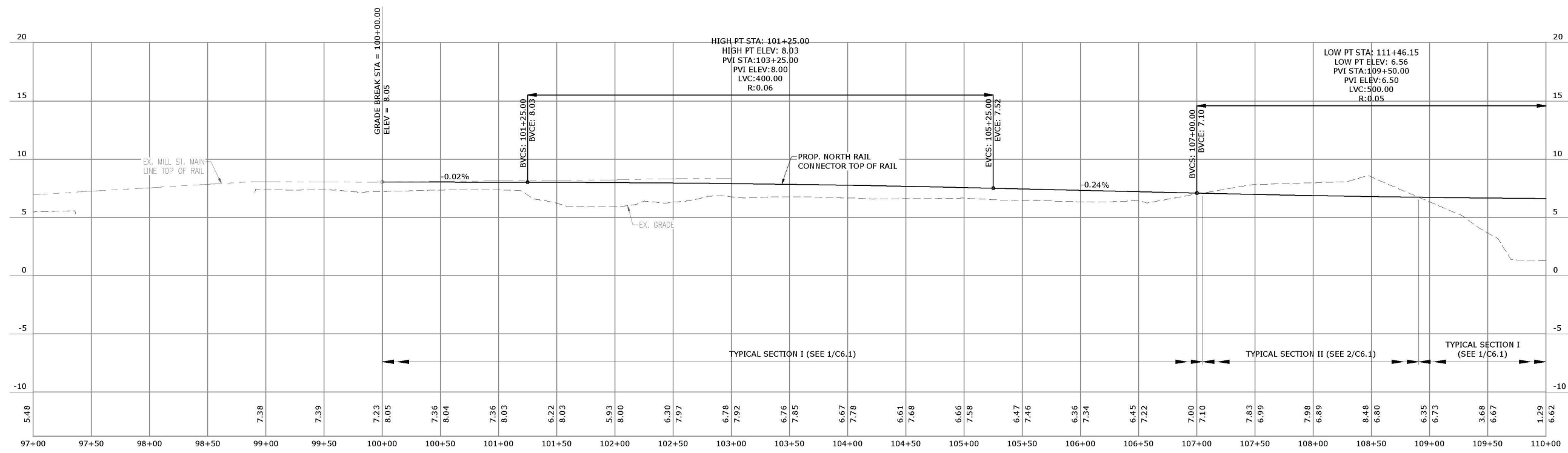


**COMPTON ENGINEERING, INC.**  
 ENGINEERING, SURVEYING & ENVIRONMENTAL SERVICES  
 PASCAGOULA • BILOXI • BAY ST. LOUIS  
 228-762-3970 228-432-2133 228-467-2770  
 www.comptonengineering.com

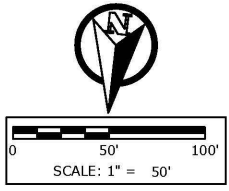
218-051  
 JACKSON COUNTY PORT AUTHORITY (JCPA),  
 MOSS POINT,  
 APPENDIX A PROJECT OVERVIEW MAP  
 SCALE: NTS  
 DRN. BY: JDL



**1 PROPOSED PLAN**  
**C2.0** SCALE: 1" = 50'



**2 PROFILE**  
**C2.0** SCALE: H: 1" = 50' V: 1" = 5'



**COMPTON ENGINEERING, INC.**  
 ENGINEERING, SURVEYING & ENVIRONMENTAL SERVICES  
 PASCAGOULA • BILOXI • BAY ST. LOUIS  
 228-762-3970 228-432-2133 228-467-2770  
 www.comptonengineering.com



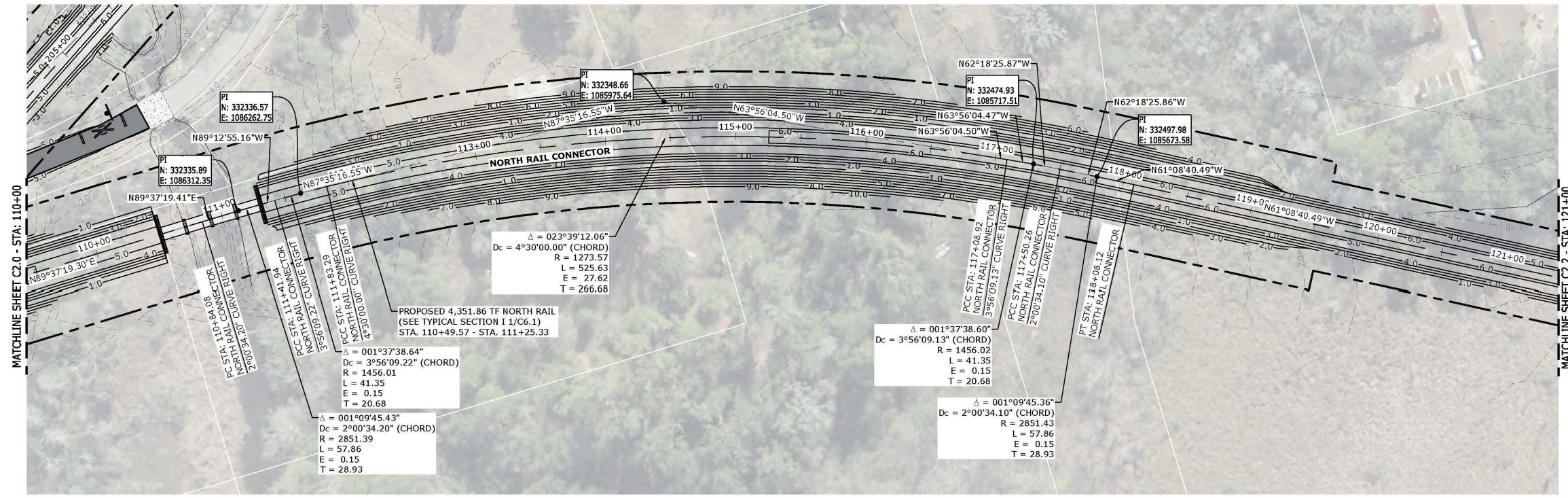
**PORT OF PASCAGOULA RESTORE PROJECT**  
**NORTH RAIL CONNECTOR PLANNING ASSISTANCE**  
 NORTH RAIL CONNECTOR - PLAN & PROFILE  
 STA: 100+00 - STA: 110+00

SCALE:	AS NOTED
JOB NO.:	218-051
DATE:	---
DSGN.:	J. STUDSTILL
DWG. BY:	B. LADNER
CHK.:	---
APVD.:	---

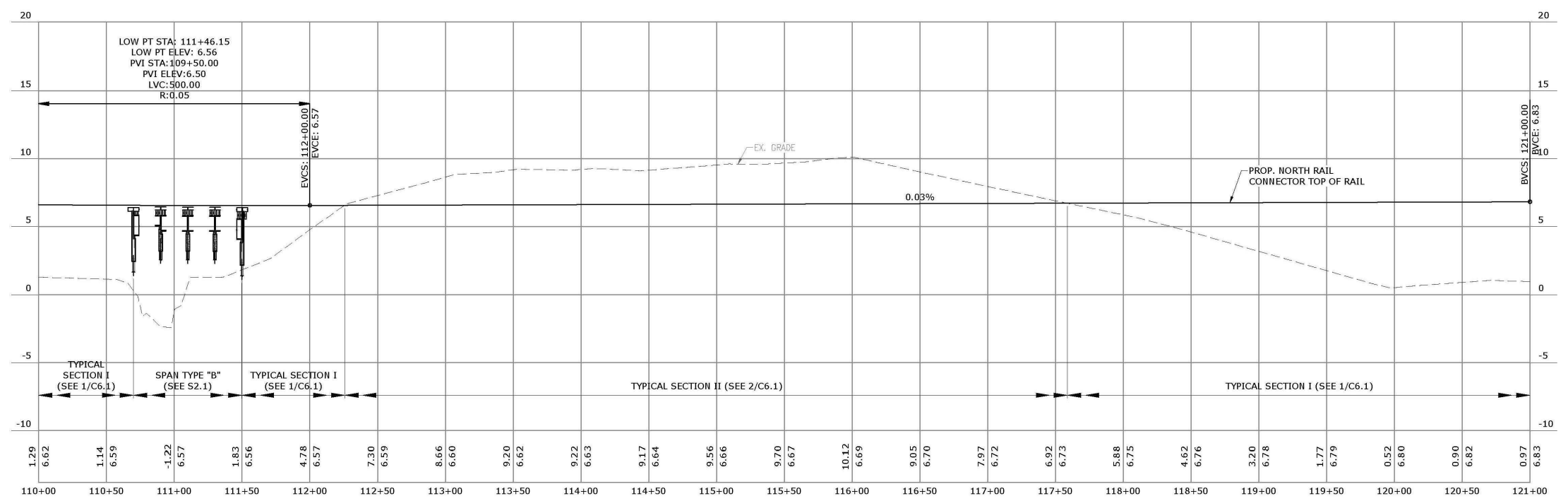
**C2.0**

S:\Pascagoula\0-Projects\2018\218-051 JCPA - North Rail Connector\001 Planning Assistance\Drawings\Current Design\Concept-Design\C2.0 - C2.3.dwg, C2.1, 1/26/2021 12:29:59 PM, brenti

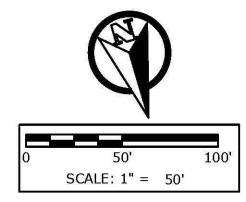
PROPRIETARY RIGHTS CLAUSE: INFORMATION AND DATA CONTAINED ON THIS DRAWING IS CONFIDENTIAL. IF GIVEN TO AN ENTITY NOT HAVING A CONTRACTUAL RELATIONSHIP WITH THE ENGINEER, THE INFORMATION SHALL NOT BE USED WITHOUT PRIOR WRITTEN PERMISSION. THIS LEGEND SHALL BE MARKED ON ANY REPRODUCTIONS HEREOF IN WHOLE OR IN PART. COMPTON ENGINEERING, INC. © COPYRIGHT 1998.



**1** PROPOSED PLAN  
**C2.1** SCALE: 1" = 50'



**2** PROFILE  
**C2.1** SCALE: H: 1" = 50' V: 1" = 5'



**COMPTON ENGINEERING, INC.**  
 ENGINEERING, SURVEYING & ENVIRONMENTAL SERVICES  
 PASCAGOULA • BLOXI • BAY ST. LOUIS  
 228-762-3970 228-432-2133 228-467-2770  
 www.comptonengineering.com



**PORT OF PASCAGOULA RESTORE PROJECT**  
**NORTH RAIL CONNECTOR PLANNING ASSISTANCE**  
 NORTH RAIL CONNECTOR - PLAN & PROFILE  
 STA: 110+00 - STA: 121+00

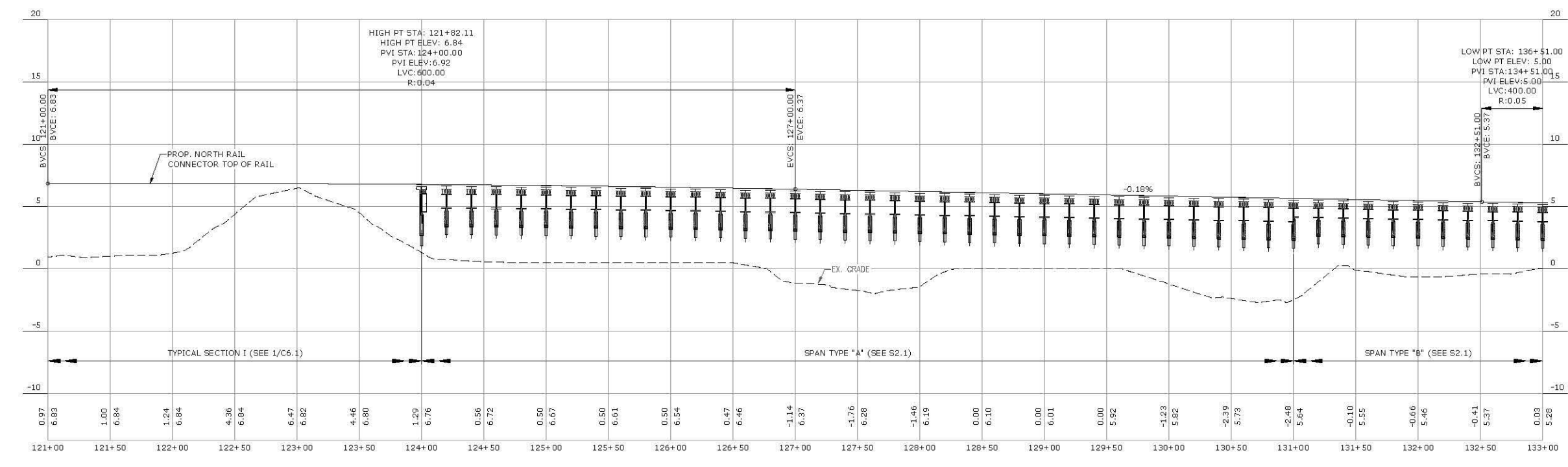
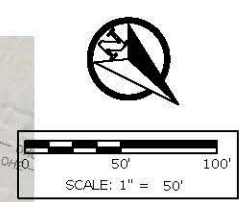
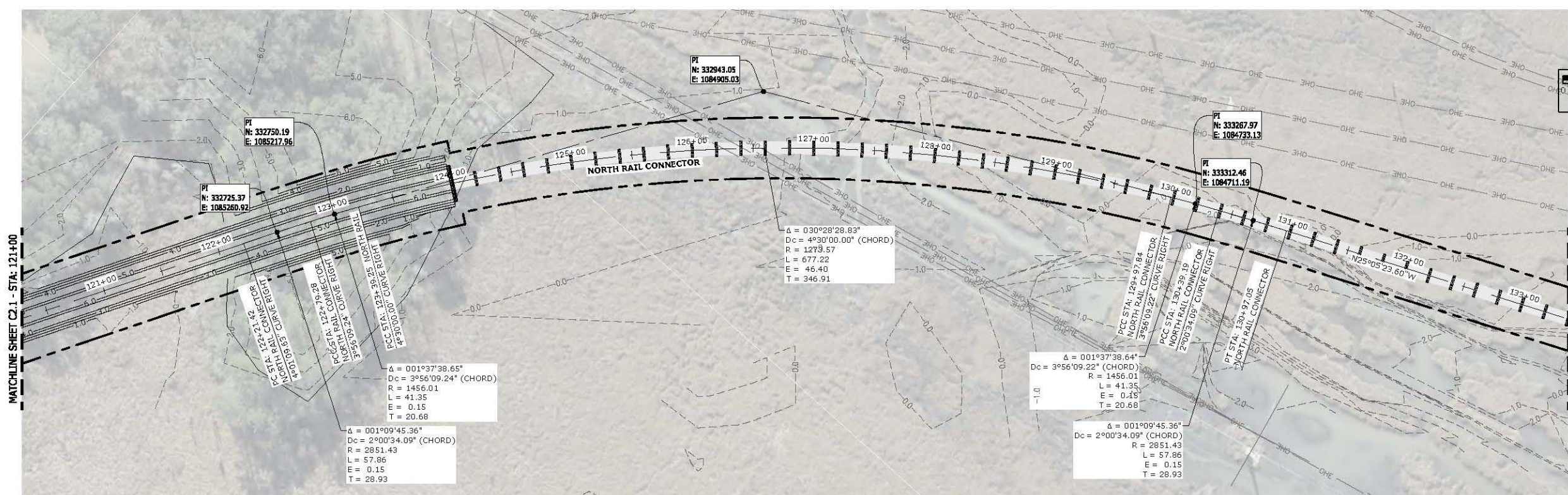
SCALE:	AS NOTED
JOB NO.:	218-051
DATE:	--
DSGN.:	J. STUDSTILL
DWG. BY:	B. LADNER
CHK.:	--
APVD.:	--

**C2.1**

05-09-19	ISSUED FOR JCPA REVIEW	TP	GC	05-16-19	ISSUED FOR JCPA REVIEW	BL	JB	06-30-20	PRELIM. ENG. DWGS - NOT FOR CONSTRUCTION	BL	JS
----------	------------------------	----	----	----------	------------------------	----	----	----------	--	----	----

S:\pascagoula\0-Projects\2018\2018-051 JCPA - North Rail Connector\001 Planning Assistance\dwgs\Current Design\Concept-Design\C2.0 - C2.3.dwg, C2.2, 1/26/2021 12:30:21 PM, brentd

PROPRIARY RIGHTS CLAUSE: INFORMATION AND DATA CONTAINED ON THIS DRAWING IS CONFIDENTIAL. IT GIVEN TO AN ENTITY NOT HAVING A CONTRACTUAL RELATIONSHIP WITH THE ENGINEER. THE INFORMATION SHALL NOT BE USED WITHOUT PRIOR WRITTEN PERMISSION. THIS LEGEND SHALL BE MARKED ON ANY REPRODUCTIONS HEREOF. © COPYRIGHT 1998.



**COMPTON ENGINEERING, INC.**  
ENGINEERING, SURVEYING & ENVIRONMENTAL SERVICES  
PASCAGOULA • BILOXI • BAY ST. LOUIS  
228-762-3970 228-432-2133 228-467-2770  
www.comptonengineering.com



**PORT OF PASCAGOULA RESTORE PROJECT**  
**NORTH RAIL CONNECTOR PLANNING ASSISTANCE**  
NORTH RAIL CONNECTOR - PLAN & PROFILE  
STA: 121+00 - STA: 133+00

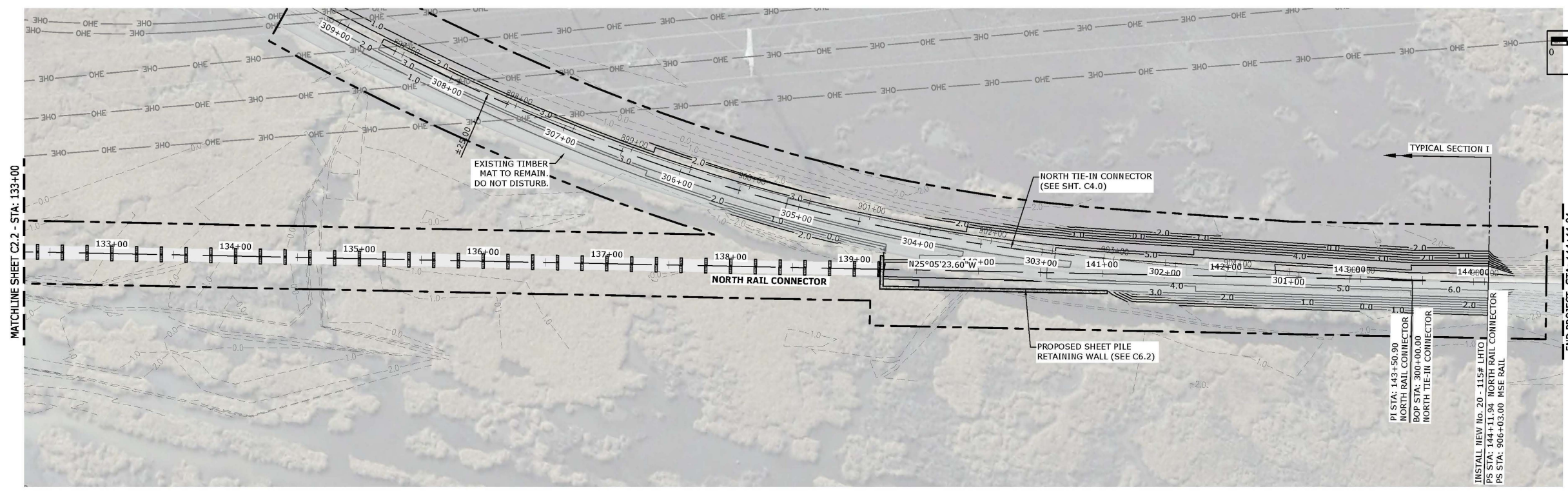
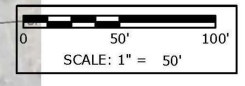
SCALE:	AS NOTED
JOB NO.:	218-051
DATE:	1/26/2021
DSGN.:	J. STODSTILL
DWG. BY:	B. LADNER
CHK.:	
APVD.:	

**C2.2**

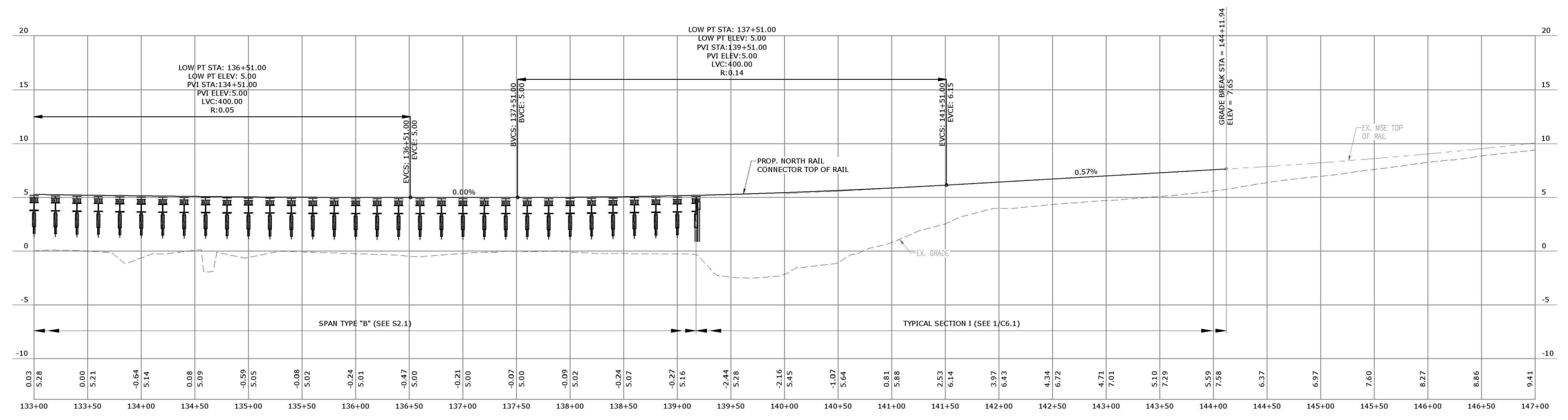
DATE	DESCRIPTION	BY	APVD.	DATE	DESCRIPTION	BY	APVD.	DATE	DESCRIPTION	BY	APVD.	DATE	DESCRIPTION	BY	APVD.
05-09-19	ISSUED FOR XCPA REVIEW	TP	GC	05-16-19	ISSUED FOR JCPA REVIEW	BL	JB	06-30-20	PRELIM. ENG. DWGS - NOT FOR CONSTRUCTION	BL	JS				

S:\Pascagoula\0-Projects\2018\051 JCPA - North Rail Connector\001 Planning Assistance\Drawings\Current Design\Concept-Design\C2.0 - C2.3.dwg, C2.3, 1/26/2021 12:30:44 PM, brenti

PROPRIETARY RIGHTS CLAIMED: INFORMATION AND DATA CONTAINED ON THIS DRAWING IS CONFIDENTIAL. IF GIVEN TO AN ENTITY NOT HAVING A CONTRACTUAL RELATIONSHIP WITH THE ENGINEER, THE INFORMATION SHALL NOT BE USED WITHOUT PRIOR WRITTEN PERMISSION. THIS LEGEND SHALL BE MARKED ON ANY REPRODUCTIONS HEREOF IN WHOLE OR IN PART. COMPTON ENGINEERING, INC. © COPYRIGHT 1998.



**1** PROPOSED PLAN  
**C2.3** SCALE: 1" = 50'



**2** PROFILE  
**C2.3** SCALE: H: 1" = 50' V: 1" = 5'

**COMPTON ENGINEERING, INC.**  
 ENGINEERING, SURVEYING & ENVIRONMENTAL SERVICES  
 PASCAGOULA • BILOXI • BAY ST. LOUIS  
 228-762-3970 228-432-2133 228-467-2770  
 www.comptonengineering.com



**PORT OF PASCAGOULA RESTORE PROJECT**  
**NORTH RAIL CONNECTOR PLANNING ASSISTANCE**  
 NORTH RAIL CONNECTOR - PLAN & PROFILE  
 STA: 133+00 - STA: 144+11.94

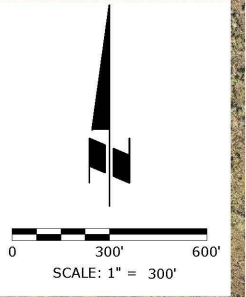
SCALE:	AS NOTED
JOB NO.:	218-051
DATE:	---
DSGN.:	J. STUDSTILL
DWG. BY:	B. LADNER
CHK.:	---
APVD.:	---

**C2.3**

05-09-19	ISSUED FOR JCPA REVIEW	TP	GC	05-16-19	ISSUED FOR JCPA REVIEW	BL	JB	06-30-20	PRELIM. ENG. DWGS - NOT FOR CONSTRUCTION	BL	JS
----------	------------------------	----	----	----------	------------------------	----	----	----------	--	----	----



**ATTACHMENT 2  
ALTERNATIVE 3 - PERMITTED ALIGNMENT  
CHOSEN ALIGNMENT**



**Alternative 3  
- Permitted  
Alignment**

**CHOSEN  
ALIGNMENT**



**COMPTON ENGINEERING, INC.**  
ENGINEERING, SURVEYING & ENVIRONMENTAL SERVICES  
PASCAGOULA • BILOXI • BAY ST. LOUIS  
228-762-3970 228-432-2133 228-467-2770  
[www.comptonengineering.com](http://www.comptonengineering.com)

S:\Pascagoula\Projects\2018\051\_JCPA - North Rail Connector\001 Planning Assistance\Envir\Permitting\Diggs\RAIL OVER MARSH 12-22-20.dwg, 12/22/2020 9:25:14 AM, nicolas, 1:2



