



Consulting Parties Meeting #12 for the Washington Union Station Expansion Project

July 14, 2022

Meeting Instructions:

Ways to Participate in Today's Meeting:

- Webex platform (using computer audio or dial-in audio)
- Dial-in only

REMINDER: Please mute yourself when not speaking.

Meeting Purpose:

1. Share the revised Preferred Alternative.
2. Share overview of planned Section 106 process.



Project Update:

October 2020: Section 106 and NEPA processes paused.

March 2022: Meeting with Consulting Parties; shared draft revised project.

June/July 2022: revised project presented to CFA and NCPC.

July 11, 2022: Section 106 and NEPA officially resumed with identification of a Preferred Alternative.

Preferred Alternative



Overview of Preferred Alternative:

Parking

- Belowground on one level
- 65% reduction in parking capacity from DEIS; 77% reduction from existing garage
- 3 street ramps to access parking and pick-up/drop-off facility

Pick-up/Drop-off (PUDO)

- Consolidated belowground facility
- Reduces pressures in front of station and adjacent streets

Bus Facility

- East-west facility integrated with the station
- Meets long term intercity and tour/charter needs with 38/39 slips
- Improved circulation

Opportunity for Civic Space

- Coordination with the private air-rights developer provided an enhanced opportunity to create a high-quality public space at the H Street level
- Civic space is a component of the private development project.

Preferred Alternative

Rail Platform Level Axon



TRAIN HALL

ACCESS TO WMATA

STUB END RAIL PLATFORMS

RUN-THROUGH RAIL PLATFORMS

MODERNIZED TRACKS AND PLATFORMS

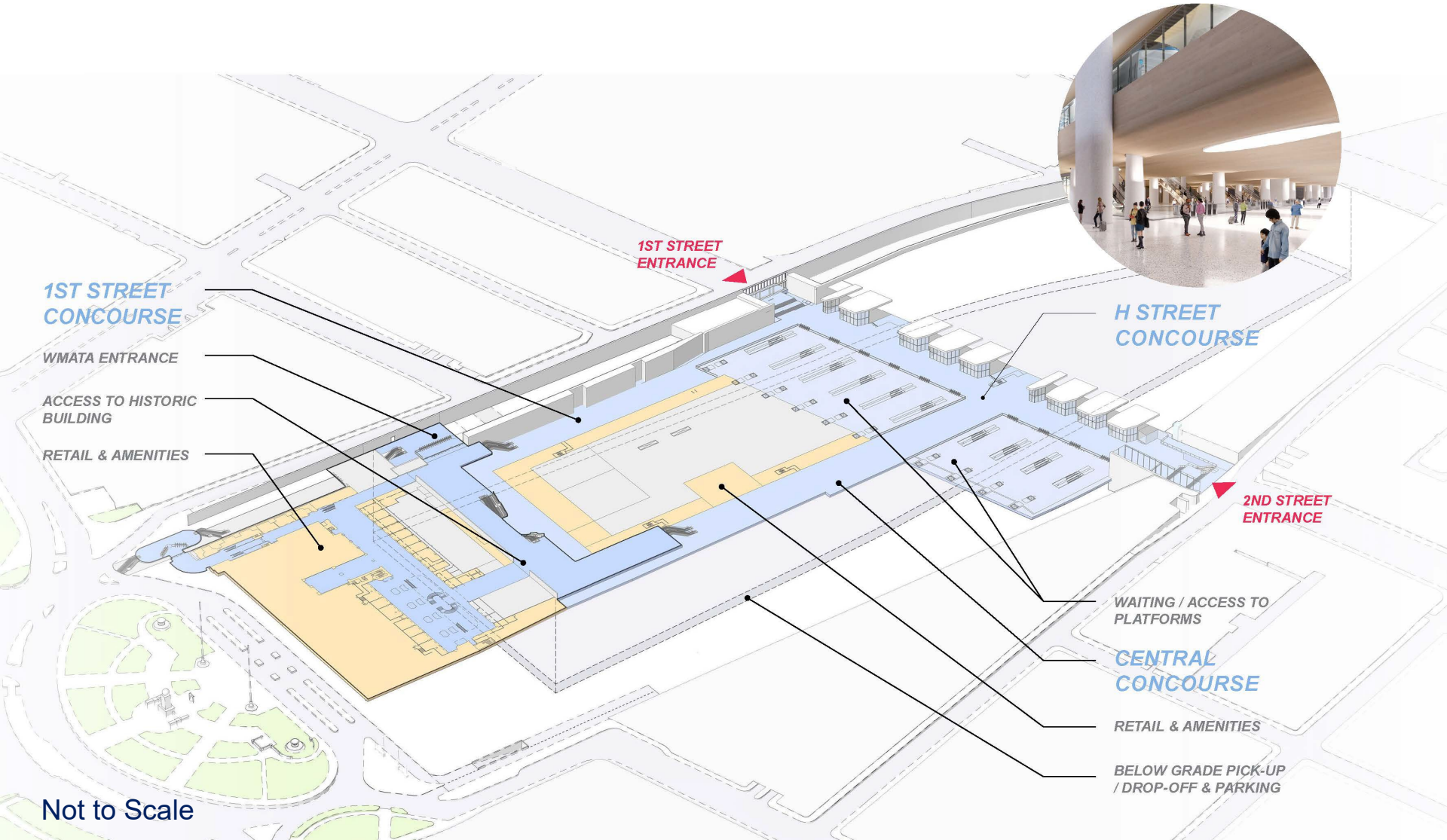
ACCESS TO NEW CONCOURSE BELOW

Not to Scale

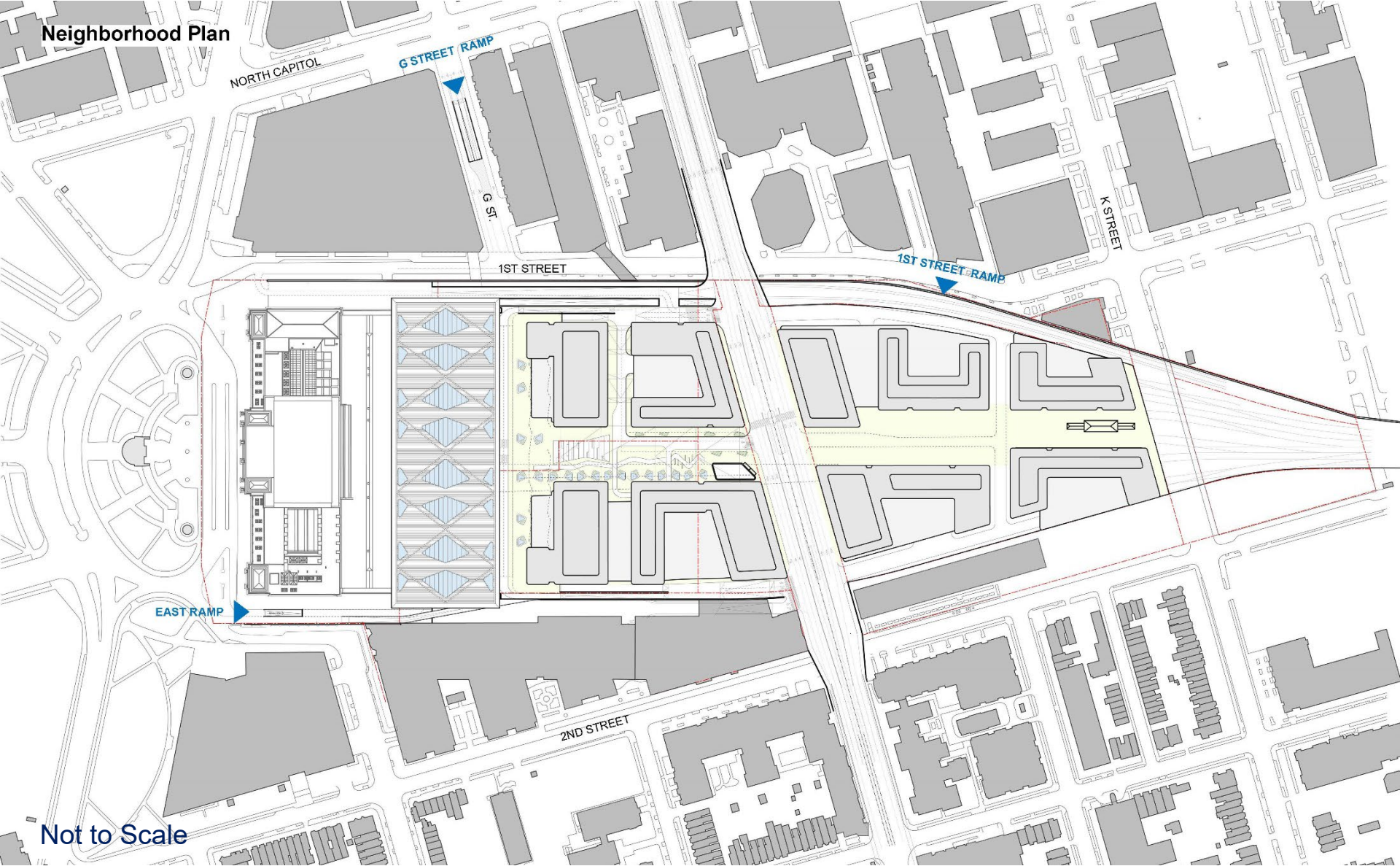


Preferred Alternative

Lower Concourse Level Axon



Preferred Alternative



Not to Scale

Preferred Alternative

H Street Concourse - Looking Southwest



Preferred Alternative

1st Street Entrance



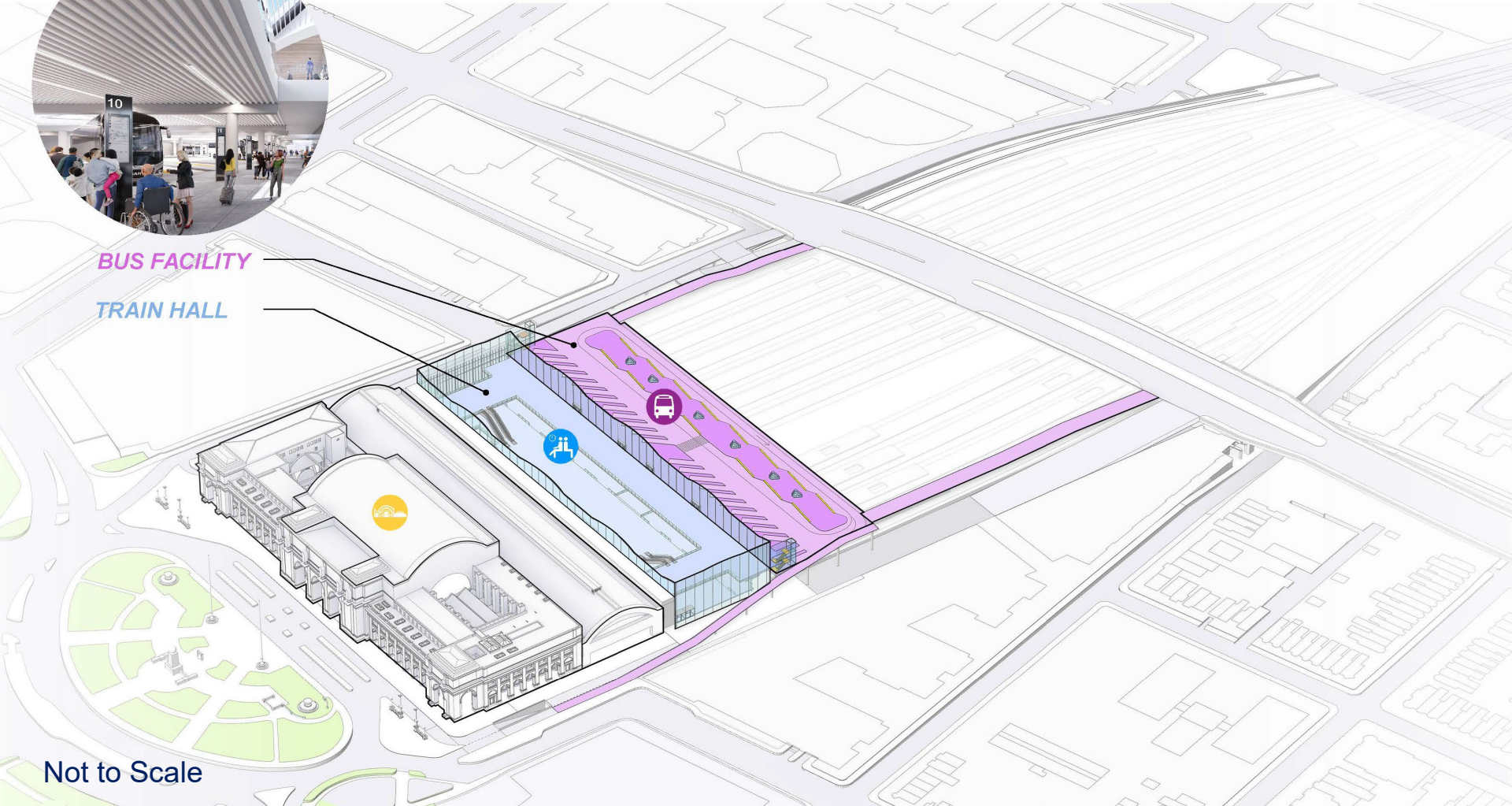
Preferred Alternative

Bus Facility Level Axon



BUS FACILITY

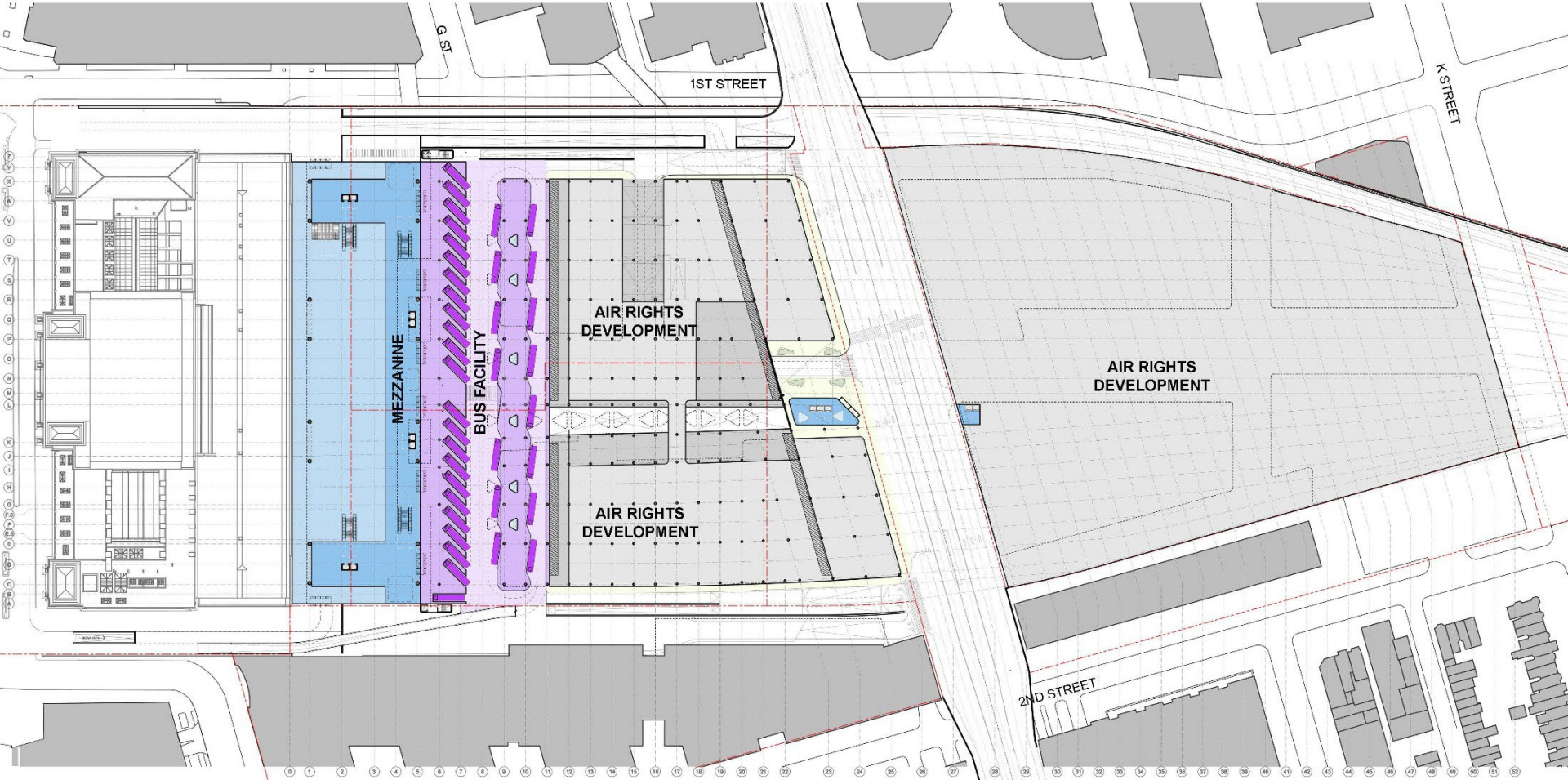
TRAIN HALL



Not to Scale

Preferred Alternative

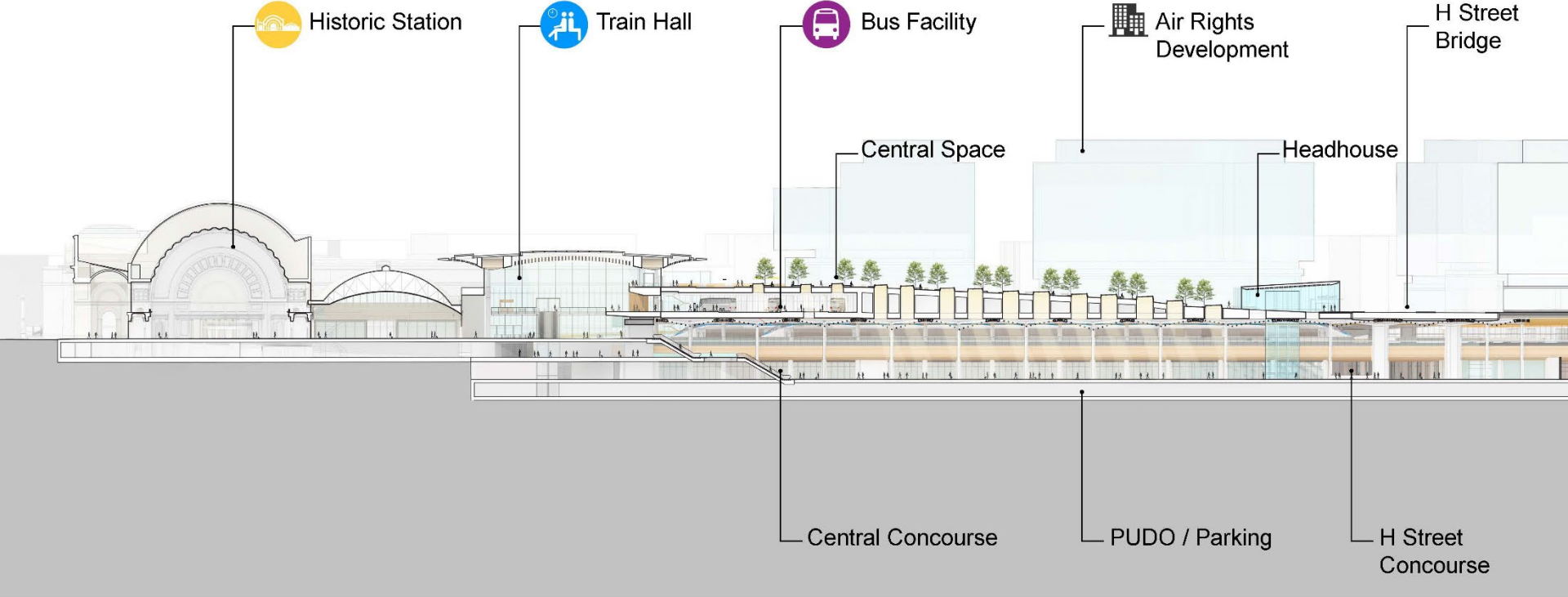
Bus Level Plan



Not to Scale

Preferred Alternative

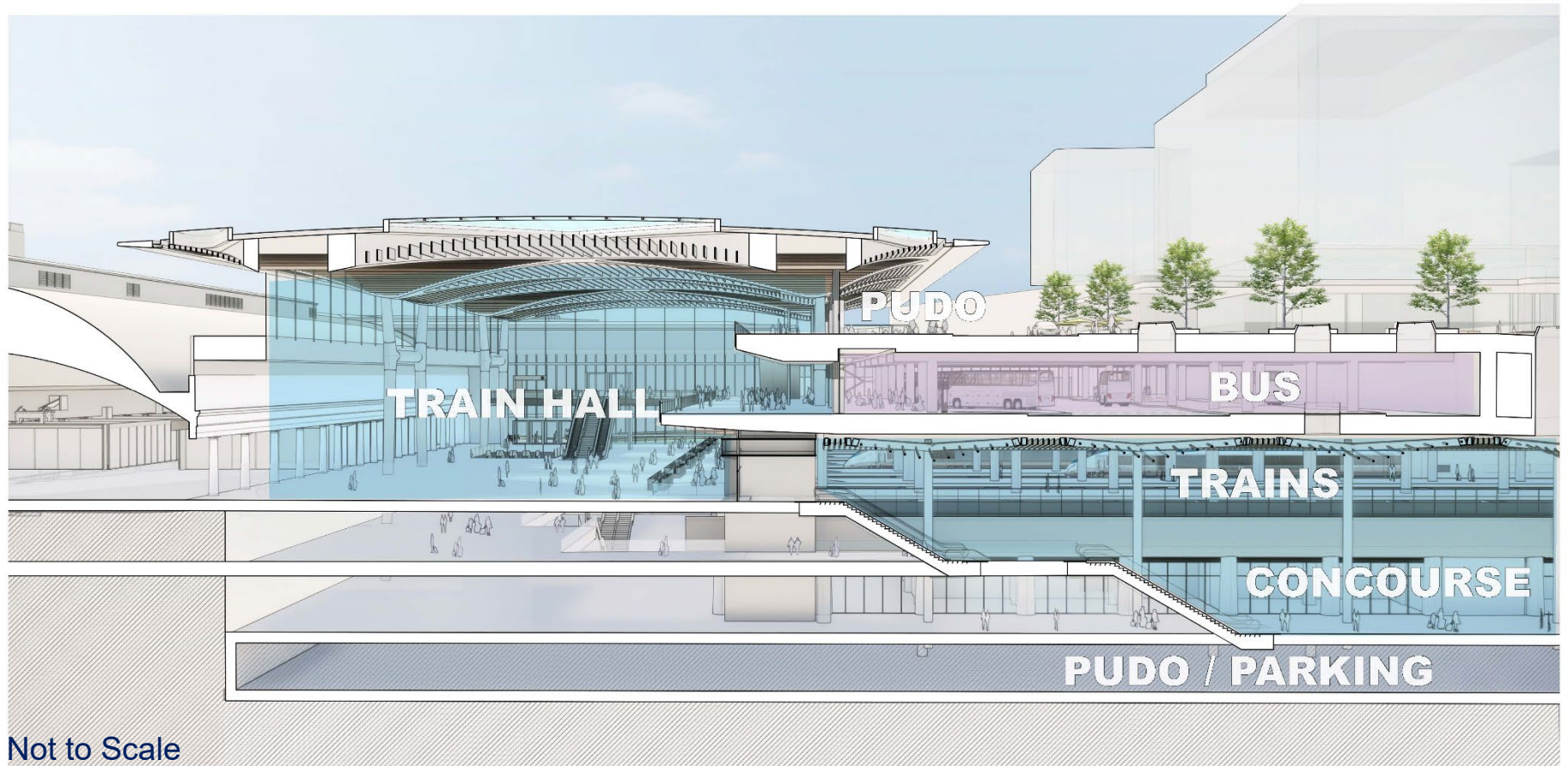
N-S Section Through Central Concourse



Not to Scale

Preferred Alternative

N-S Section Through Bus Facility



Not to Scale

Preferred Alternative

Train Hall - Looking Northwest



Preferred Alternative

Train Hall Mezzanine - Looking East



Preferred Alternative

Bus Facility- Looking East



Preferred Alternative

PUDO and Deck Level Axon



Not to Scale

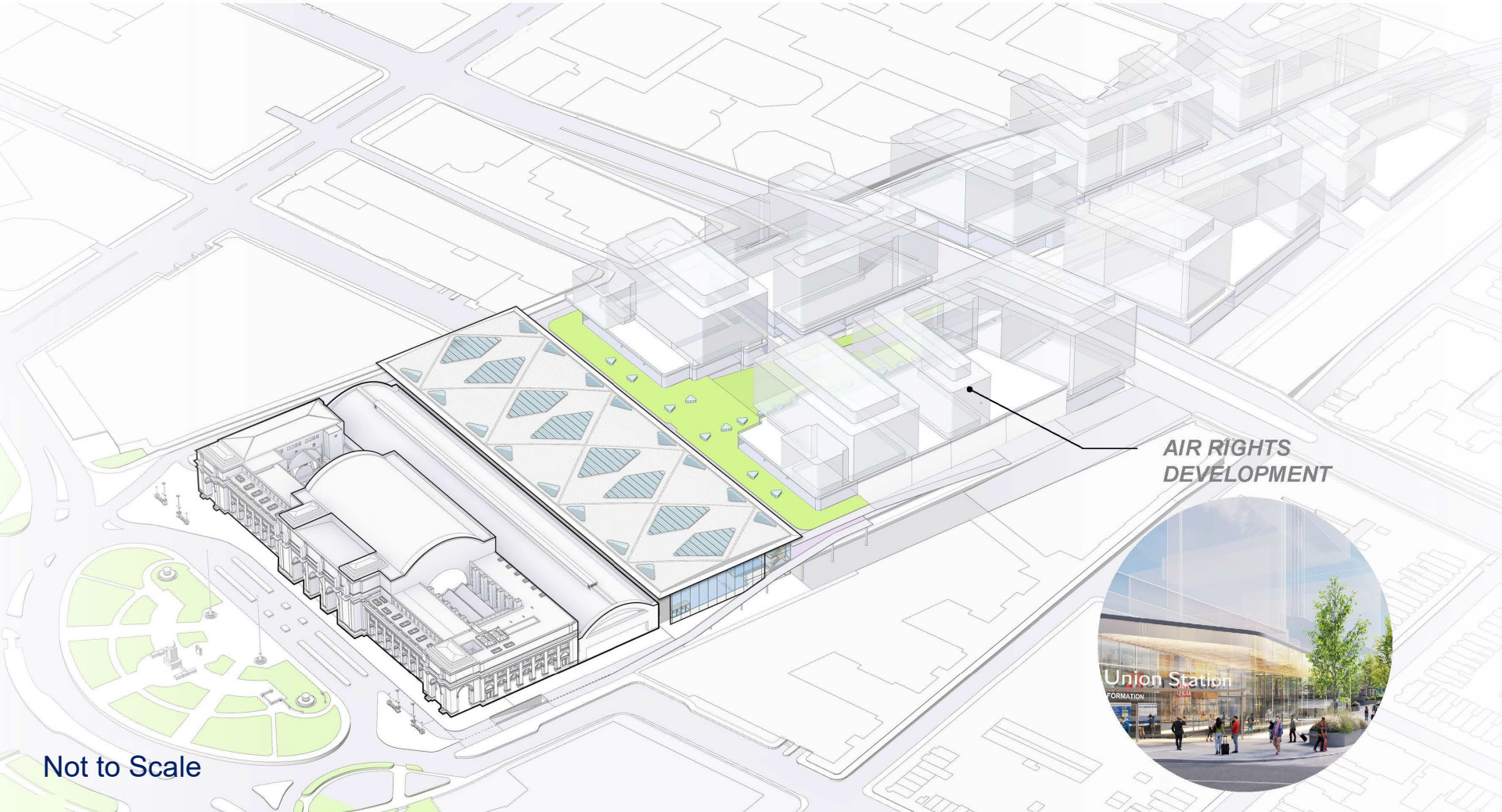
Preferred Alternative

PUDO - Looking west



Preferred Alternative

Air Rights + Development Axon



AIR RIGHTS
DEVELOPMENT

Not to Scale

Preferred Alternative

Central Space - View from H Street Bridge, looking south to Station



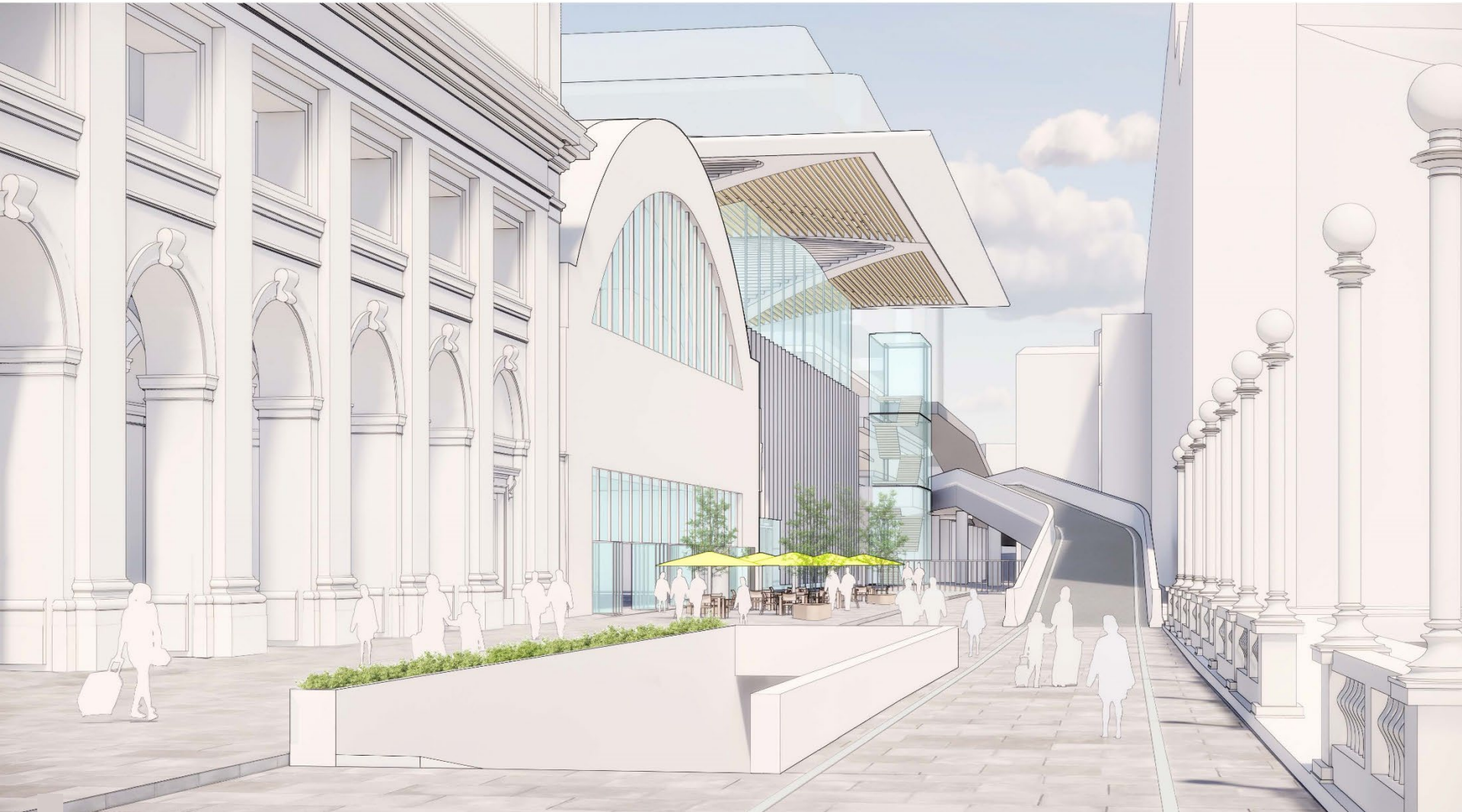
Preferred Alternative

West Ramp



Preferred Alternative

East Ramp



Animation of Preferred Alternative



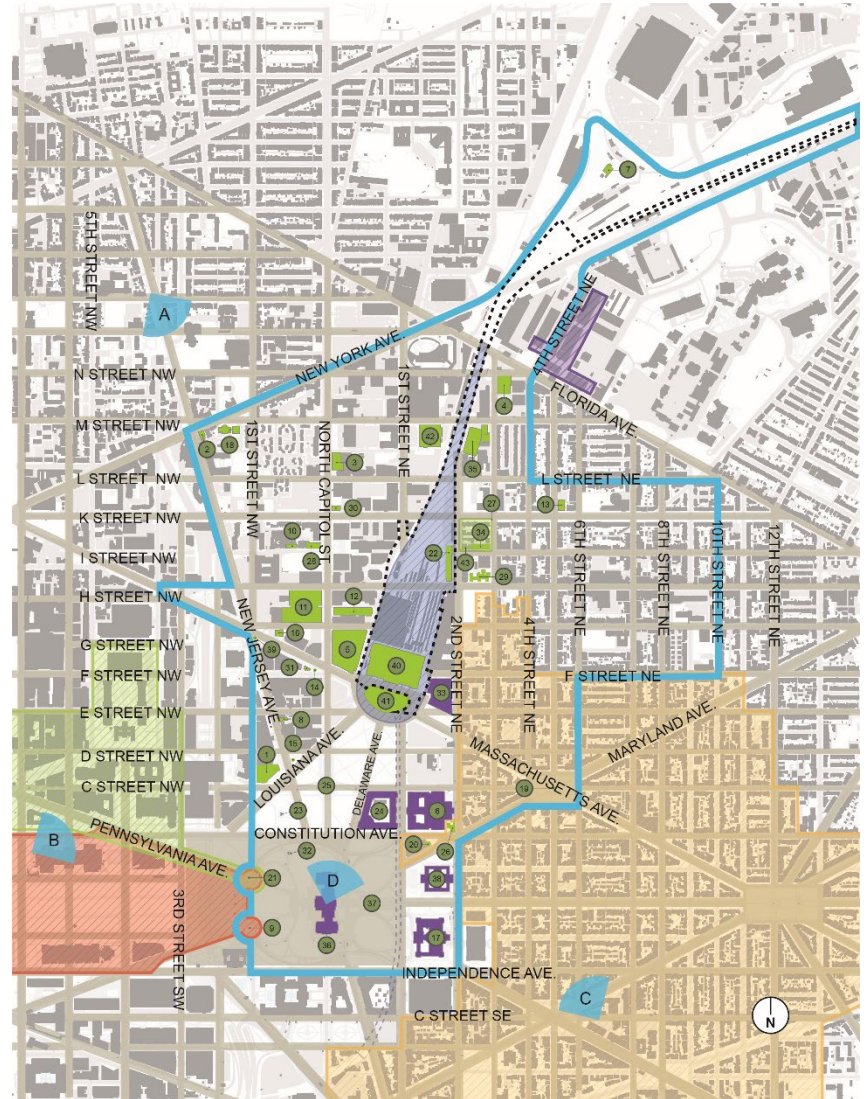
Area of Potential Effect



APE and Identified Historic Properties

FRA proposes that the APE **does not** require revision to account for potential effects of the Preferred Alternative.

SHPO confirmed that no additional properties within the APE are eligible nor have been added to the DC Inventory or National Register.



Section 106 Process Future Consultation

Planned Section 106 Consultation

Fall 2022:

- Submit Supplemental Assessment of Effects Report to Consulting Parties for review and comment
- CP Meeting #13 to discuss comments and proposed minimization and mitigation strategies

Winter 2023: Determination of Effect submitted to SHPO

Spring 2023:

- CP Meeting #14 to discuss draft Programmatic Agreement (PA)
- Public Review of the Supplemental Draft Environmental Impact Statement (SDEIS)

Fall 2023: Finalize and execute PA prior to Record of Decision (ROD)

Comments and Discussion





THANK YOU

Amanda Murphy

Acting Federal Preservation
Officer

Federal Railroad Administration
amanda.murphy2@dot.gov

Project website:

www.WUSstationexpansion.com

