

# *AAF RAILWAY AT GOAA*

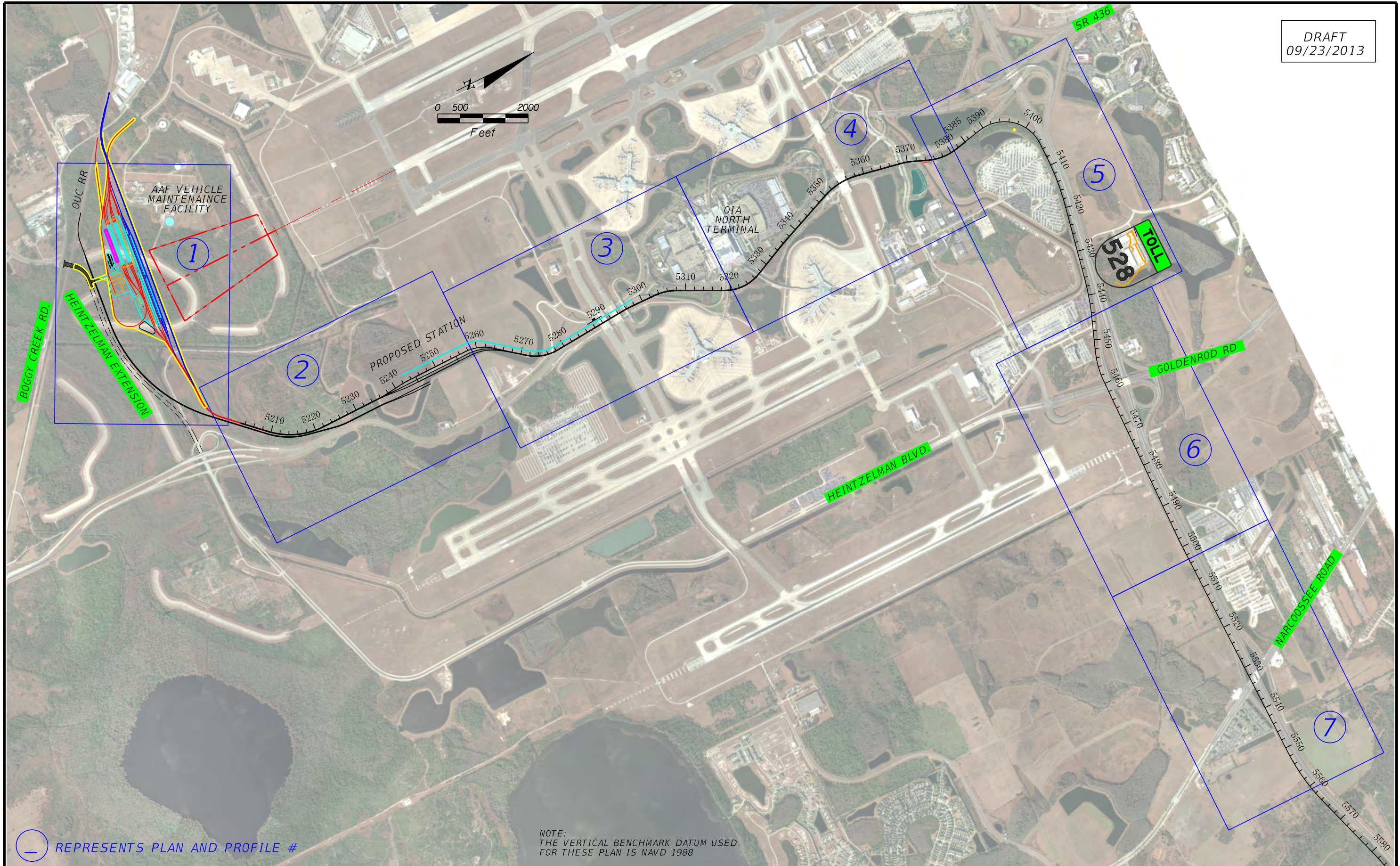
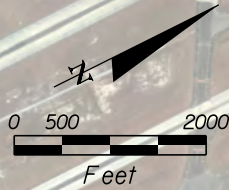
*AAF RAILWAY AT GOAA*

*ALL ABOARD FLORIDA INTERCITY PASSENGER RAIL PROJECT*



U.S. Department of Transportation  
Federal Railroad Administration





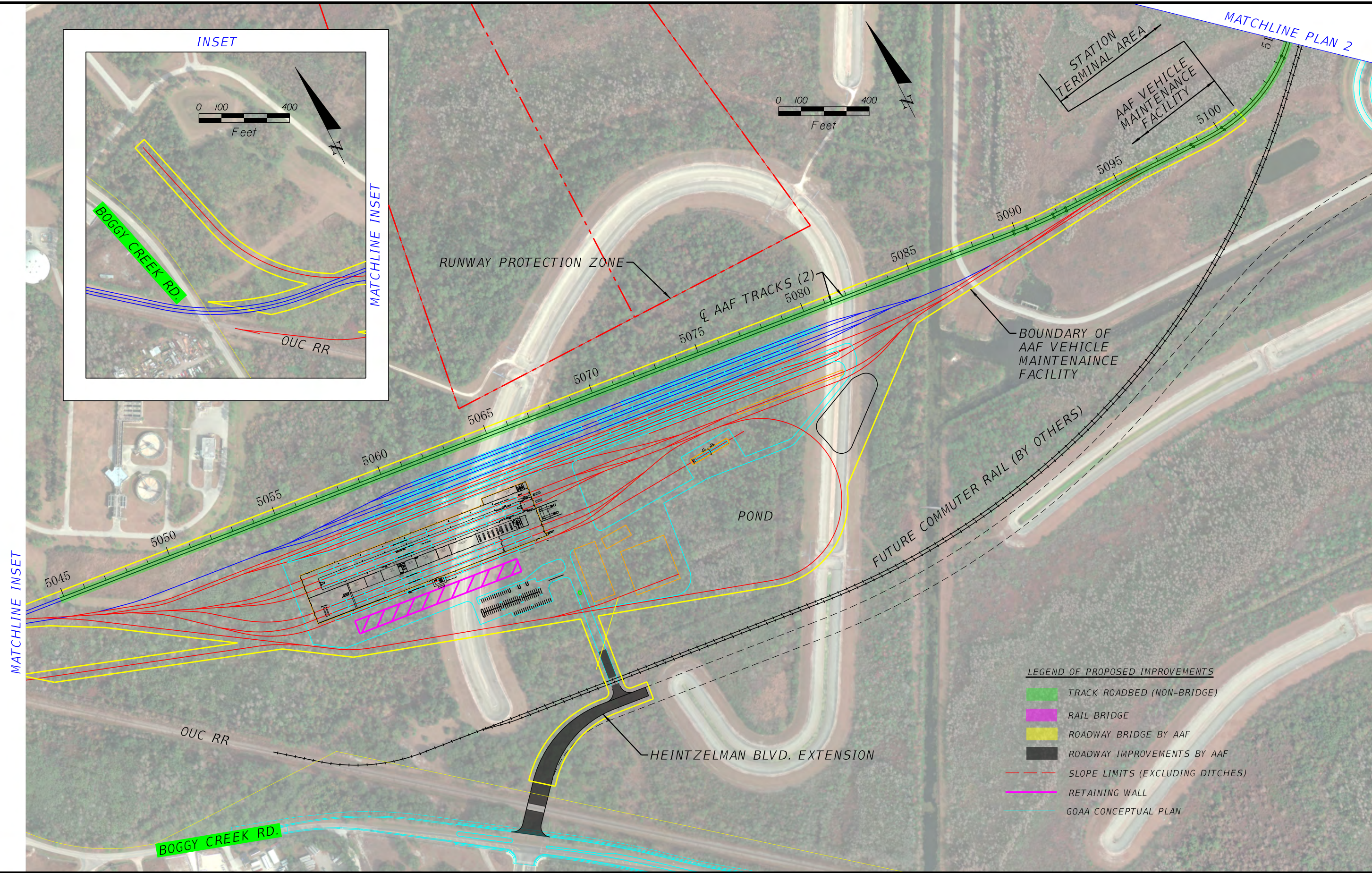
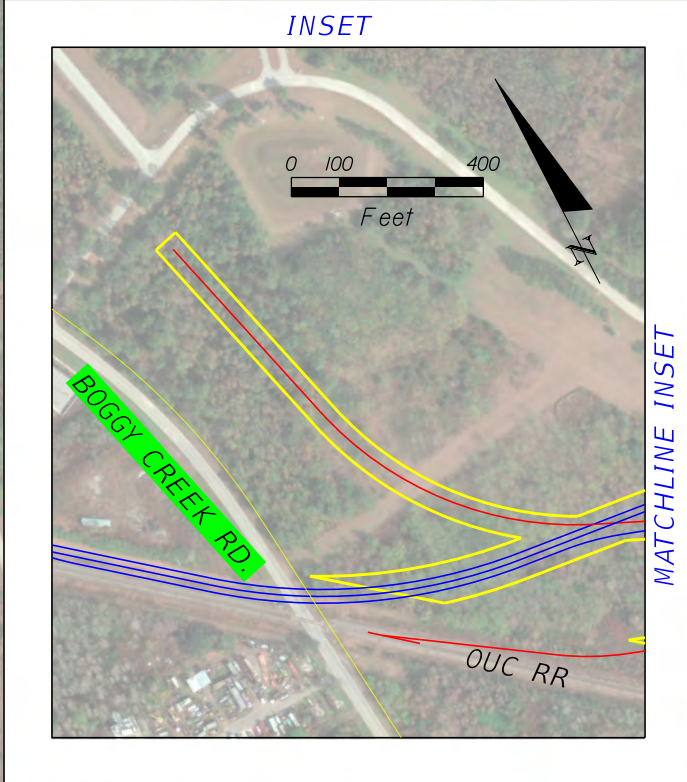
○ REPRESENTS PLAN AND PROFILE #

NOTE:  
THE VERTICAL BENCHMARK DATUM USED  
FOR THESE PLAN IS NAVD 1988

**AAF RAILWAY AT GOAA**  
**ALL ABOARD FLORIDA INTERCITY PASSENGER RAIL PROJECT**







- LEGEND OF PROPOSED IMPROVEMENTS**
- TRACK ROADBED (NON-BRIDGE)
  - RAIL BRIDGE
  - ROADWAY BRIDGE BY AAF
  - ROADWAY IMPROVEMENTS BY AAF
  - SLOPE LIMITS (EXCLUDING DITCHES)
  - RETAINING WALL
  - GOAA CONCEPTUAL PLAN

**AAF RAILWAY AT GOAA**  
**ALL ABOARD FLORIDA INTERCITY PASSENGER RAIL PROJECT**







MATCHLINE PLAN 1

5109+75.79 BACK =  
5203+00.00 AHEAD

SOUTH AIRPORT BLVD (FUTURE)

SOUTH TERMINAL (FUTURE)

AAF TRACKS (3)

MATCHLINE PLAN 3

- LEGEND OF PROPOSED IMPROVEMENTS**
- TRACK ROADBED (NON-BRIDGE)
  - RAIL BRIDGE
  - ROADWAY BRIDGE BY AAF
  - ROADWAY IMPROVEMENTS BY AAF
  - SLOPE LIMITS (EXCLUDING DITCHES)
  - RETAINING WALL
  - GOAA CONCEPTUAL PLAN

FUTURE COMMUTER RAIL (BY OTHERS)

SOUTH TERMINAL (FUTURE)

NORTH AIRPORT BLVD (FUTURE)

**AAF RAILWAY AT GOAA**  
**ALL ABOARD FLORIDA INTERCITY PASSENGER RAIL PROJECT**



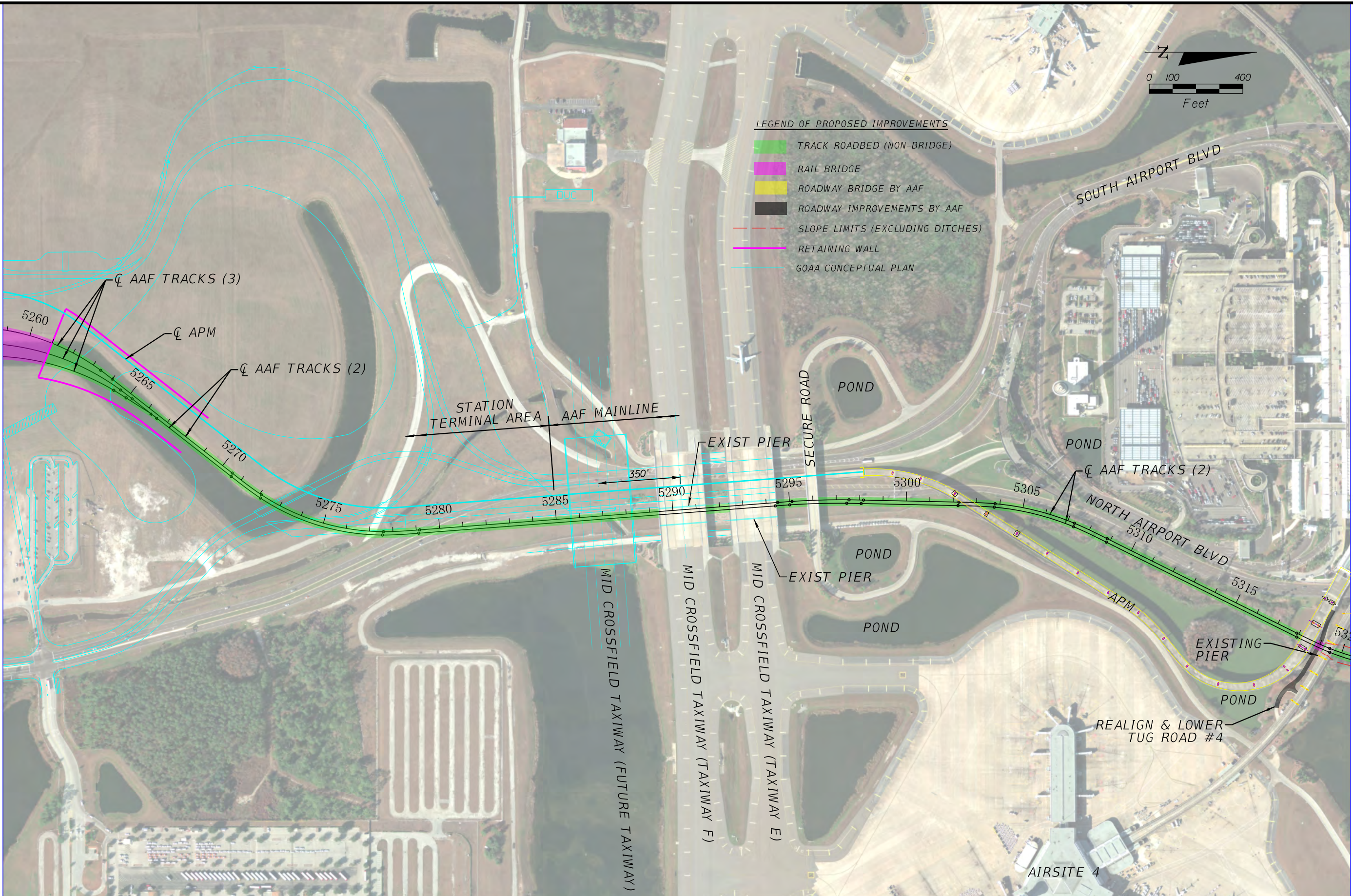


MATCHLINE PLAN 2



**LEGEND OF PROPOSED IMPROVEMENTS**

- █ TRACK ROADBED (NON-BRIDGE)
- █ RAIL BRIDGE
- █ ROADWAY BRIDGE BY AAF
- █ ROADWAY IMPROVEMENTS BY AAF
- SLOPE LIMITS (EXCLUDING DITCHES)
- RETAINING WALL
- GOAA CONCEPTUAL PLAN



MATCHLINE PLAN 4

**AAF RAILWAY AT GOAA**  
**ALL ABOARD FLORIDA INTERCITY PASSENGER RAIL PROJECT**







**LEGEND OF PROPOSED IMPROVEMENTS**

- TRACK ROADBED (NON-BRIDGE)
- RAIL BRIDGE
- ROADWAY BRIDGE BY AAF
- ROADWAY IMPROVEMENTS BY AAF
- SLOPE LIMITS (EXCLUDING DITCHES)
- RETAINING WALL
- GOAA CONCEPTUAL PLAN



MATCHLINE PLAN 3

MATCHLINE PLAN 5

**AAF RAILWAY AT GOAA**  
**ALL ABOARD FLORIDA INTERCITY PASSENGER RAIL PROJECT**

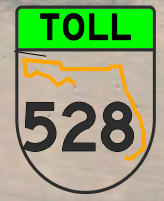
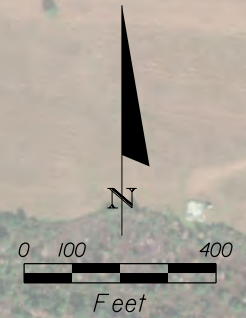






**LEGEND OF PROPOSED IMPROVEMENTS**

- TRACK ROADBED (NON-BRIDGE)
- RAIL BRIDGE
- ROADWAY BRIDGE BY AAF
- ROADWAY IMPROVEMENTS BY AAF
- SLOPE LIMITS (EXCLUDING DITCHES)
- RETAINING WALL
- GOAA CONCEPTUAL PLAN



EAGLE NEST  
(NEW 28.4501079355334,  
81.3054906141938)

STATION EQUATION  
STA. 5383+92.16 BACK  
STA. 5385+00.00 AHEAD

☉ AAF TRACKS (2)

☉ AAF TRACKS (2)

RUNWAY PROTECTION ZONE

SUB-STATION

MATCHLINE PLAN 4

MATCHLINE PLAN 6

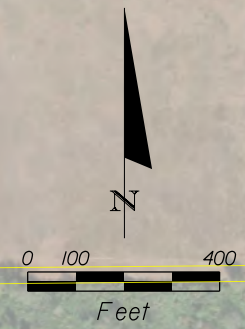
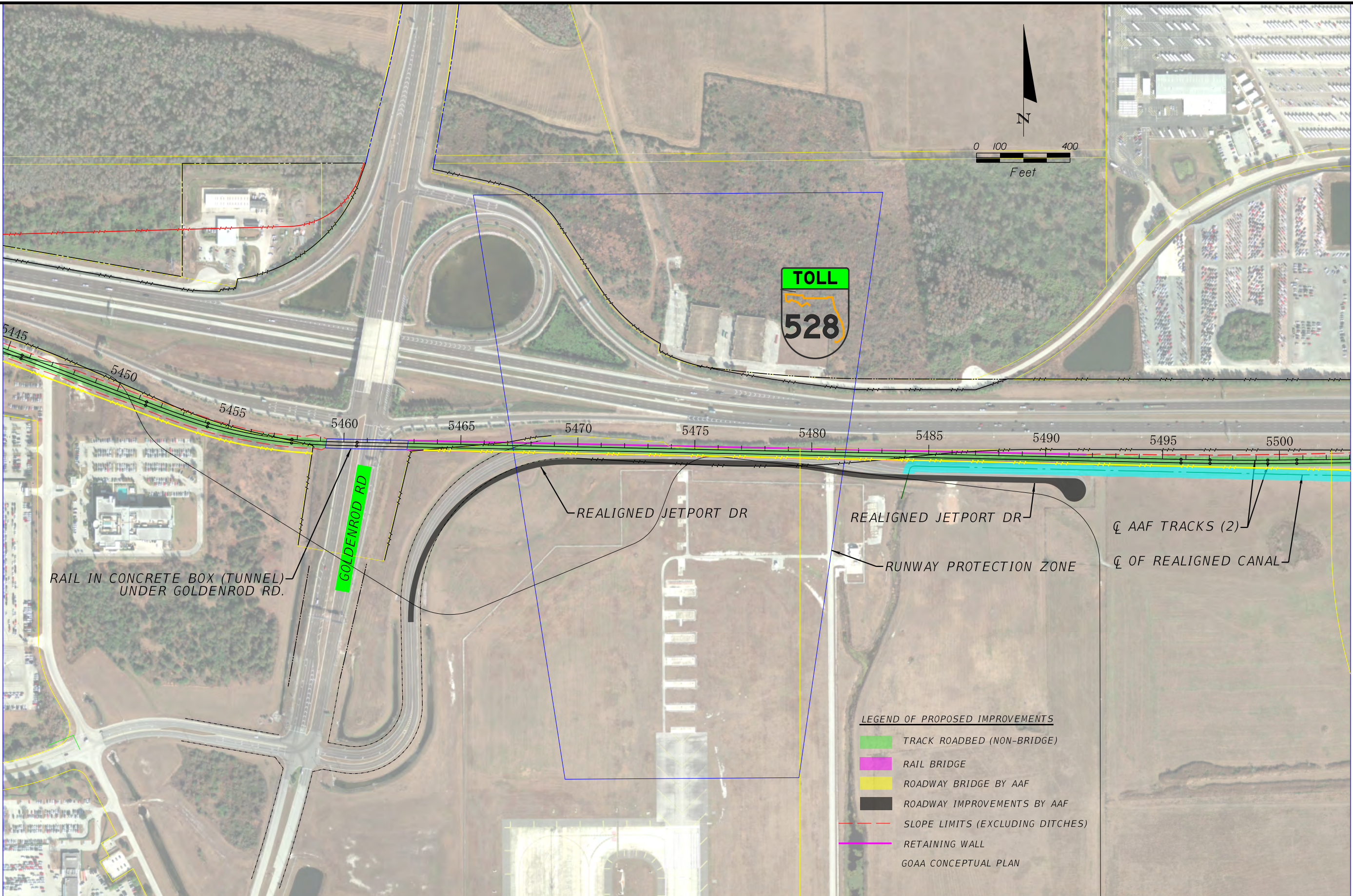
**AAF RAILWAY AT GOAA**  
**ALL ABOARD FLORIDA INTERCITY PASSENGER RAIL PROJECT**





MATCHLINE PLAN 5

MATCHLINE PLAN 7



RAIL IN CONCRETE BOX (TUNNEL)  
UNDER GOLDENROD RD.

GOLDENROD RD

REALIGNED JETPORT DR

REALIGNED JETPORT DR

RUNWAY PROTECTION ZONE

AAF TRACKS (2)

OF REALIGNED CANAL

LEGEND OF PROPOSED IMPROVEMENTS

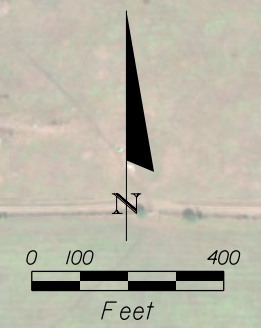
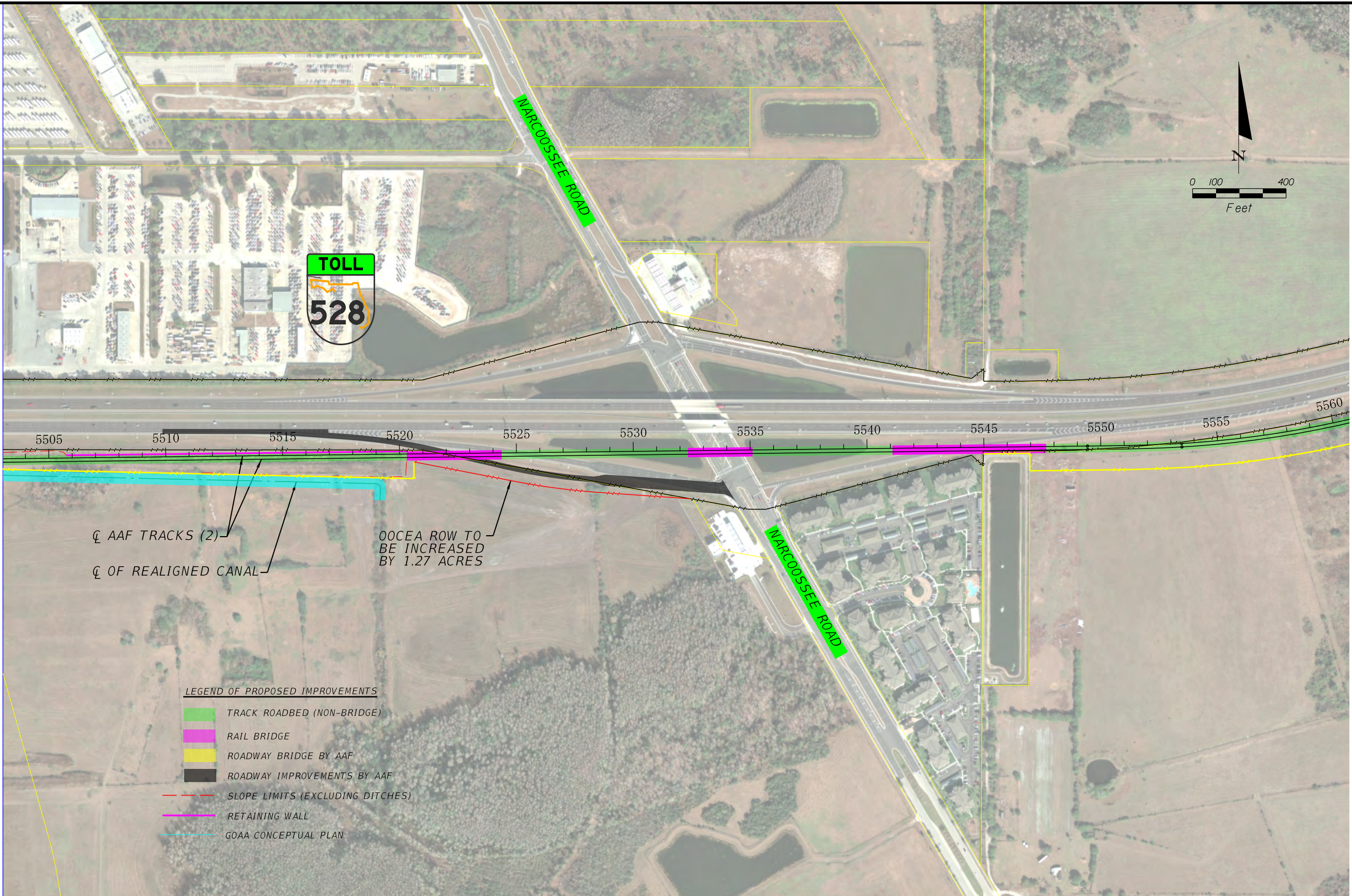
- TRACK ROADBED (NON-BRIDGE)
- RAIL BRIDGE
- ROADWAY BRIDGE BY AAF
- ROADWAY IMPROVEMENTS BY AAF
- SLOPE LIMITS (EXCLUDING DITCHES)
- RETAINING WALL
- GOAA CONCEPTUAL PLAN

AAF RAILWAY AT GOAA  
ALL ABOARD FLORIDA INTERCITY PASSENGER RAIL PROJECT





MATCHLINE PLAN 6



AAF RAILWAY AT GOAA  
ALL ABOARD FLORIDA INTERCITY PASSENGER RAIL PROJECT

