

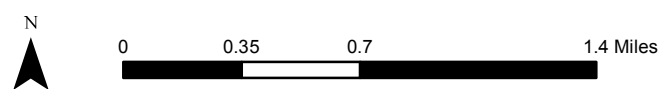
Explanation of Features

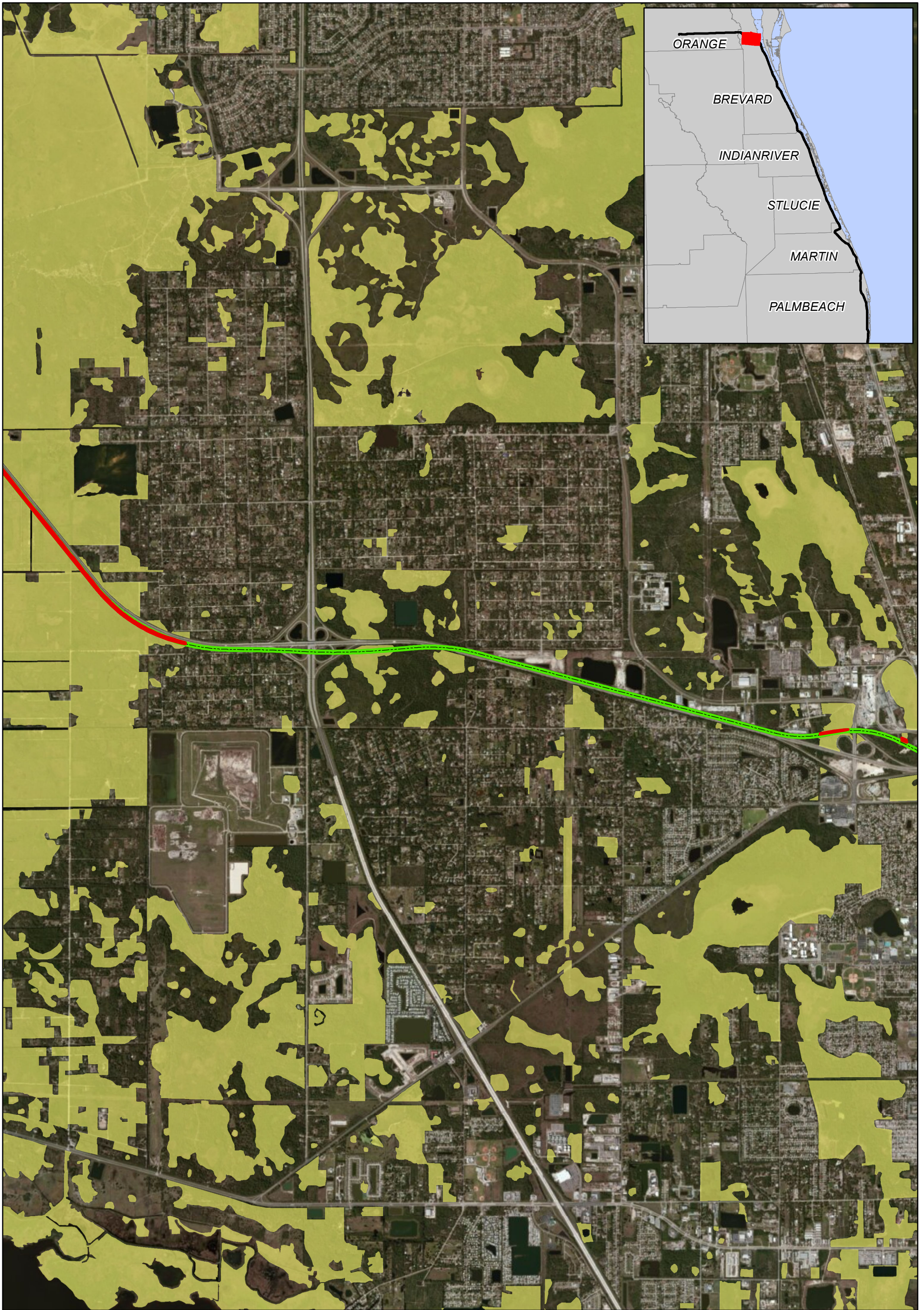
- Impacted Wetlands
- Wetlands
- N-S Corridor Extension
- E-W Corridor Extension

Data Sources: ESRI Bing Maps 2012 Imagery, SJRWMD 2009, SFWMD 2004, AAF 2012

Location of Impacted Wetlands Along the E-W Corridor

All Aboard Florida Intercity Passenger Rail Project





Explanation of Features

- Impacted Wetlands
- Wetlands
- N-S Corridor Extension
- E-W Corridor Extension

Data Sources: ESRI Bing Maps 2012 Imagery, SJRWMD 2009, SFWMD 2004, AAF 2012

Location of Impacted Wetlands Along the E-W Corridor

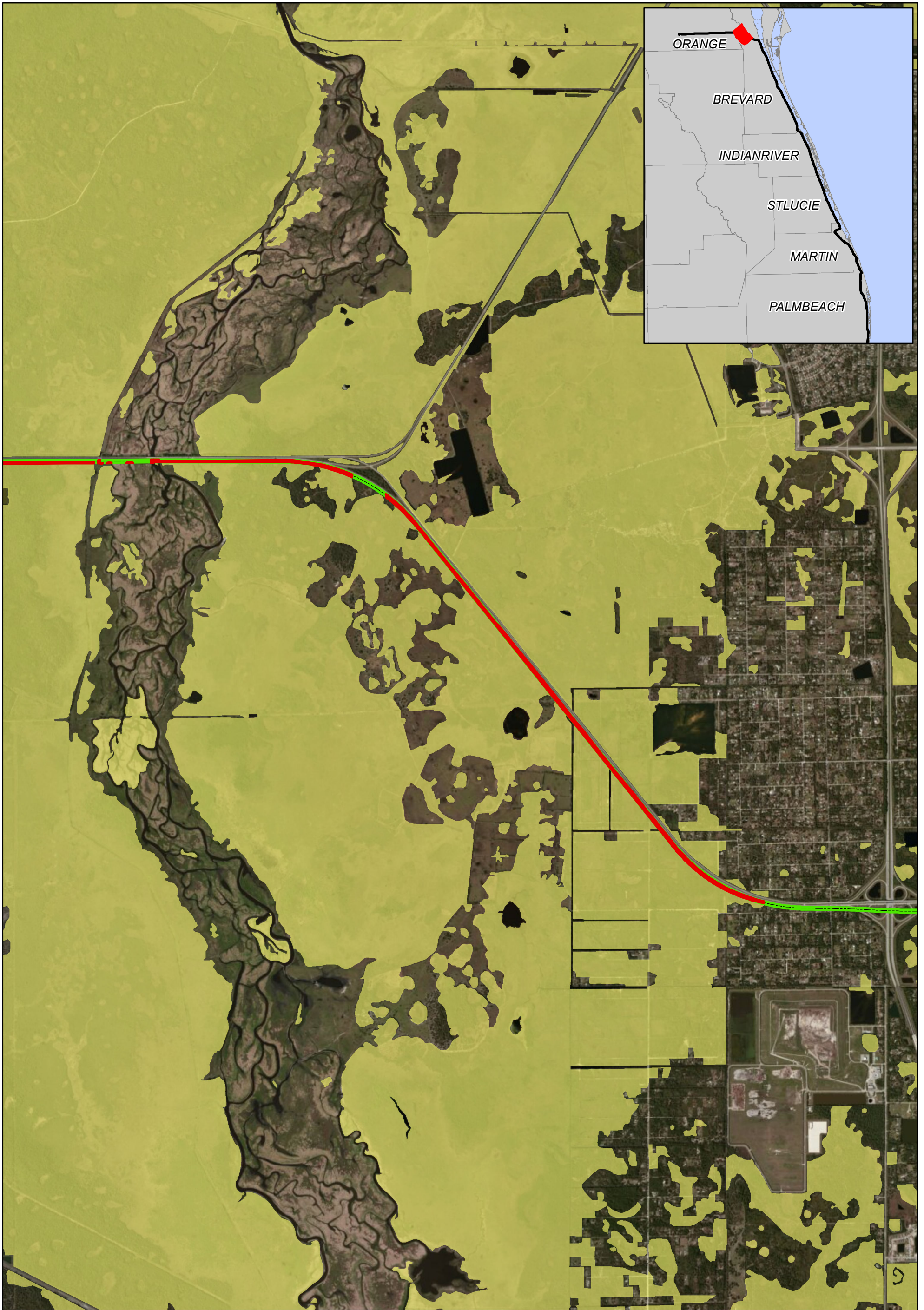
All Aboard Florida Intercity Passenger Rail Project



0 0.35 0.7 1.4 Miles



U.S. Department of Transportation
Federal Railroad Administration



Explanation of Features

- Impacted Wetlands
- Wetlands
- N-S Corridor Extension
- E-W Corridor Extension

Data Sources: ESRI Bing Maps 2012 Imagery, SJRWMD 2009, SFWMD 2004, AAF 2012

Location of Impacted Wetlands Along the E-W Corridor

All Aboard Florida Intercity Passenger Rail Project



0 0.35 0.7 1.4 Miles



U.S. Department of Transportation
Federal Railroad Administration



Explanation of Features

- Impacted Wetlands
- Wetlands
- N-S Corridor Extension
- E-W Corridor Extension

Data Sources: ESRI Bing Maps 2012 Imagery, SJRWMD 2009, SFWMD 2004, AAF 2012

Location of Impacted Wetlands Along the E-W Corridor

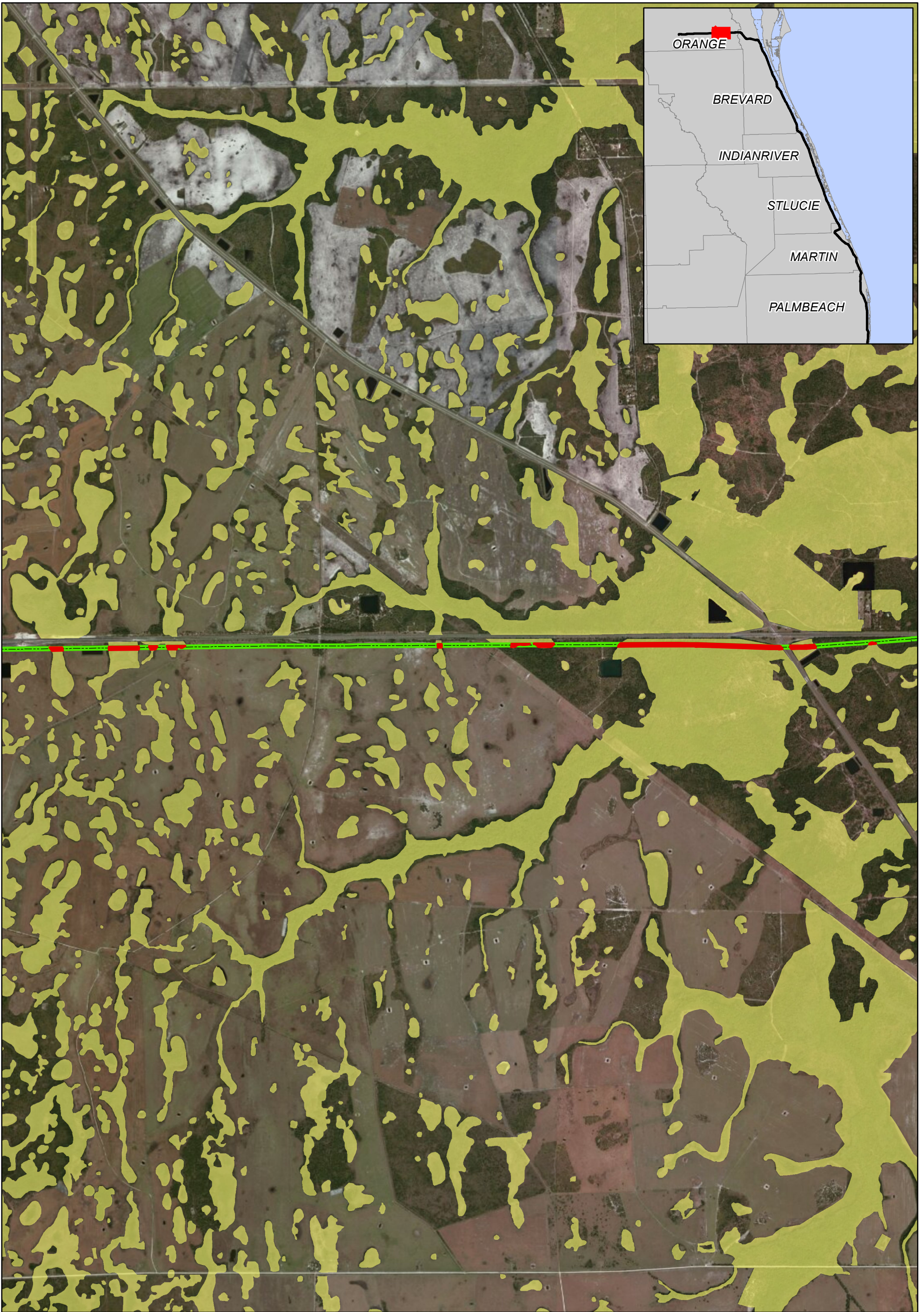
All Aboard Florida Intercity Passenger Rail Project



0 0.35 0.7 1.4 Miles



U.S. Department of Transportation
Federal Railroad Administration



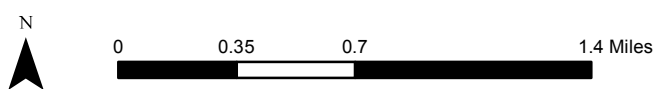
Explanation of Features

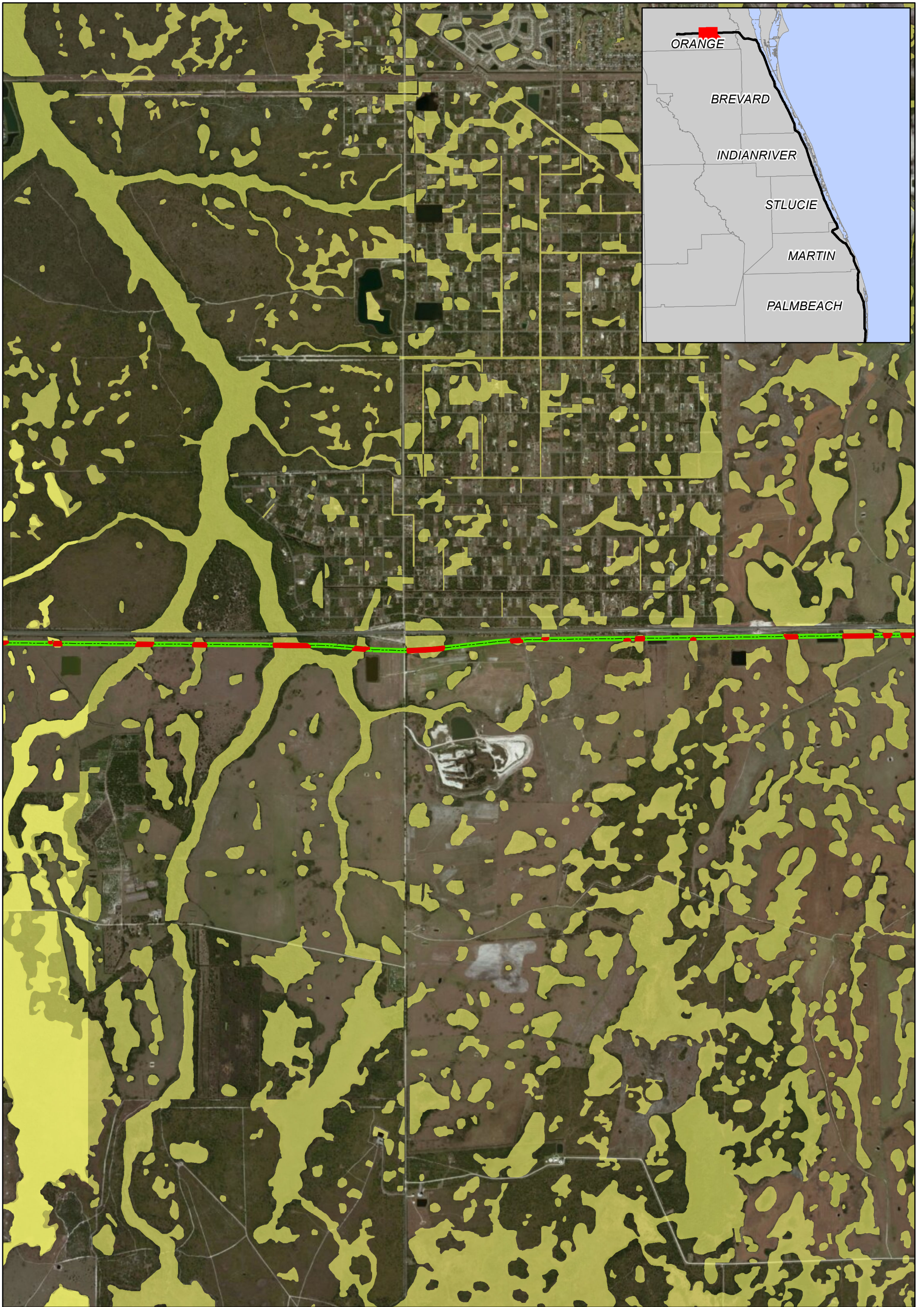
- Impacted Wetlands
- Wetlands
- N-S Corridor Extension
- E-W Corridor Extension

Data Sources: ESRI Bing Maps 2012 Imagery, SJRWMD 2009, SFWMD 2004, AAF 2012

Location of Impacted Wetlands Along the E-W Corridor

All Aboard Florida Intercity Passenger Rail Project





Explanation of Features

- Impacted Wetlands
- Wetlands
- N-S Corridor Extension
- E-W Corridor Extension

Data Sources: ESRI Bing Maps 2012 Imagery, SJRWMD 2009, SFWMD 2004, AAF 2012

Location of Impacted Wetlands Along the E-W Corridor

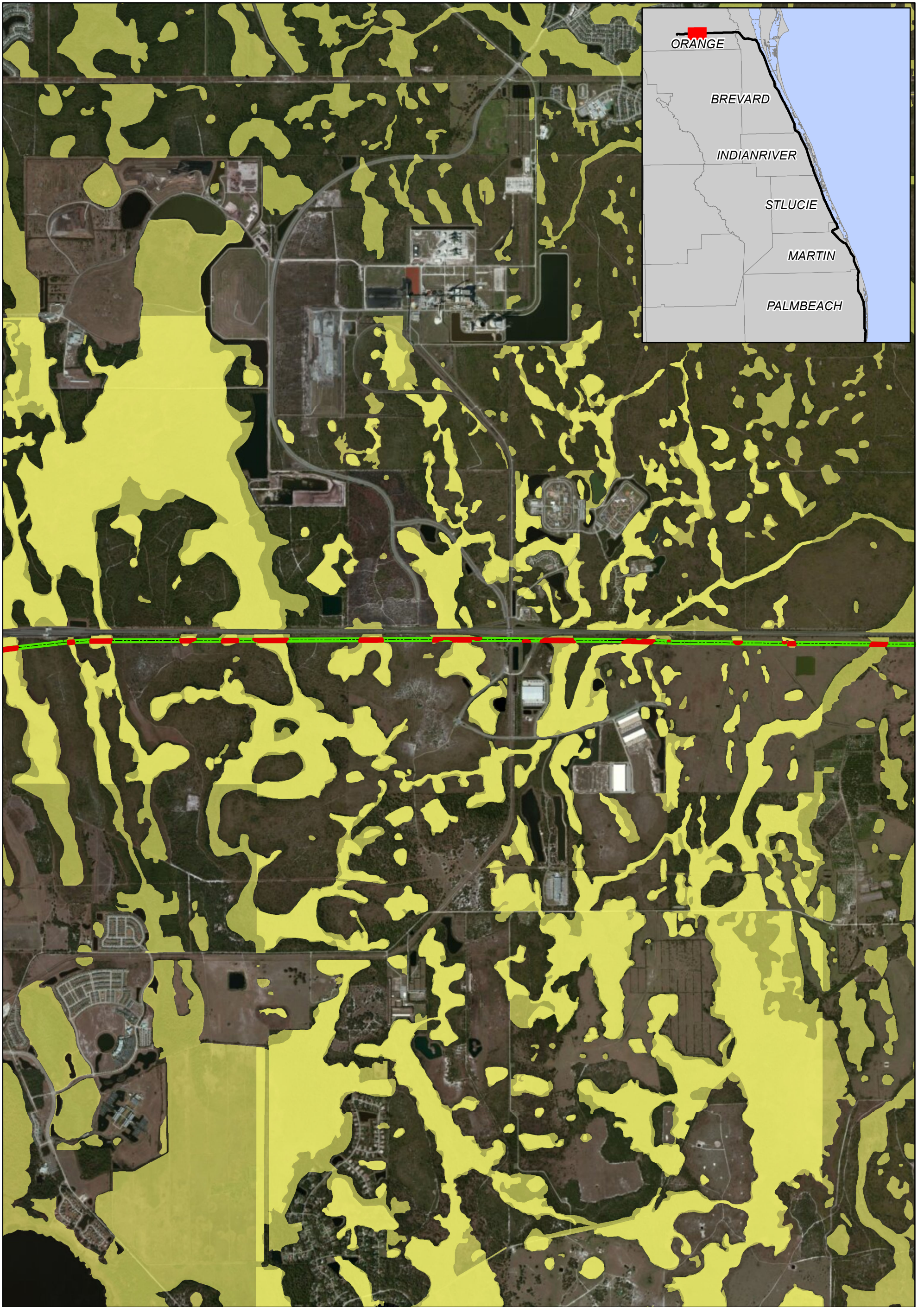
All Aboard Florida Intercity Passenger Rail Project



0 0.35 0.7 1.4 Miles



U.S. Department of Transportation
Federal Railroad Administration



Explanation of Features

- Impacted Wetlands
- Wetlands
- N-S Corridor Extension
- E-W Corridor Extension

Data Sources: ESRI Bing Maps 2012 Imagery, SJRWMD 2009, SFWMD 2004, AAF 2012

Location of Impacted Wetlands Along the E-W Corridor

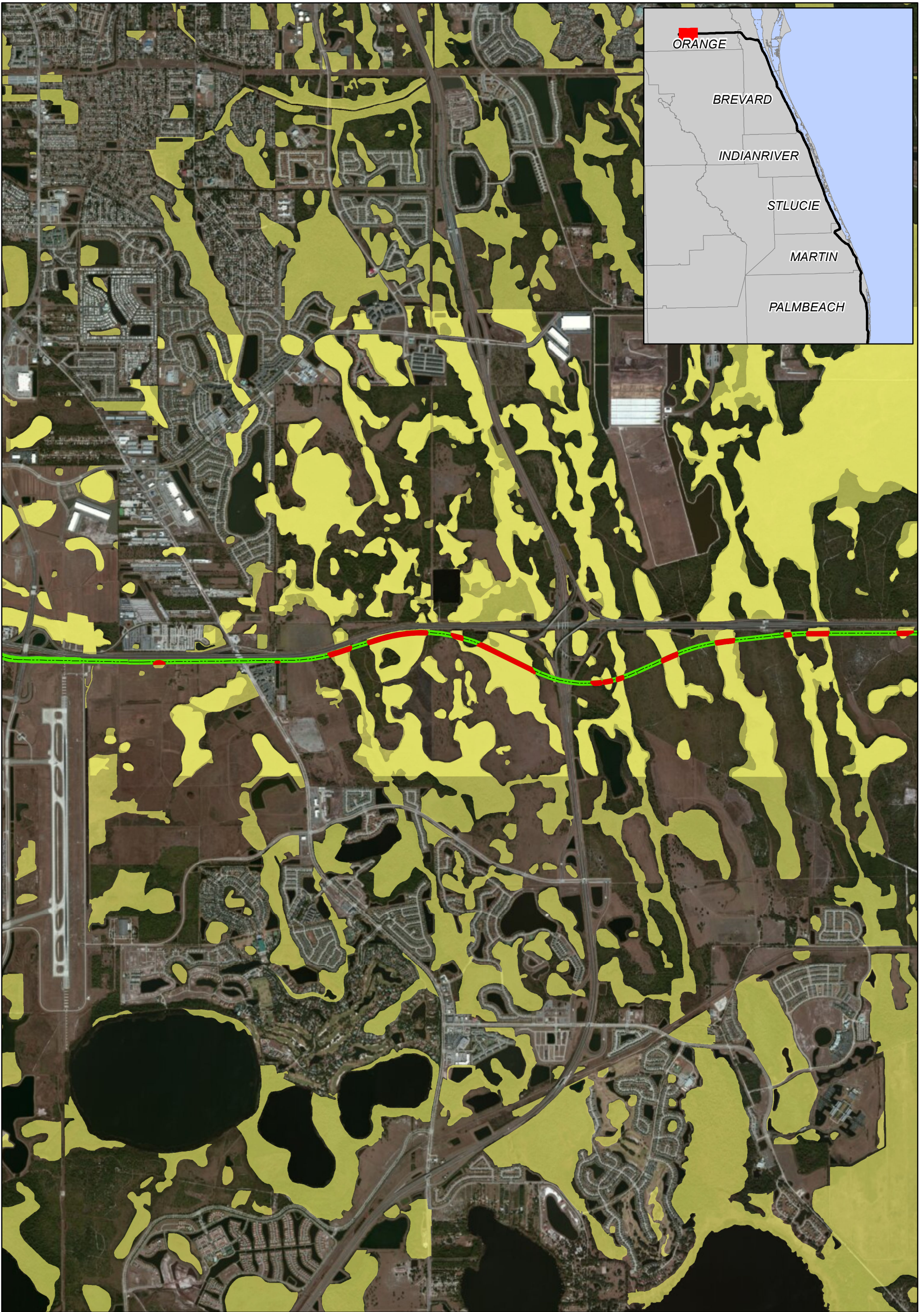
All Aboard Florida Intercity Passenger Rail Project



0 0.35 0.7 1.4 Miles



U.S. Department of Transportation
Federal Railroad Administration



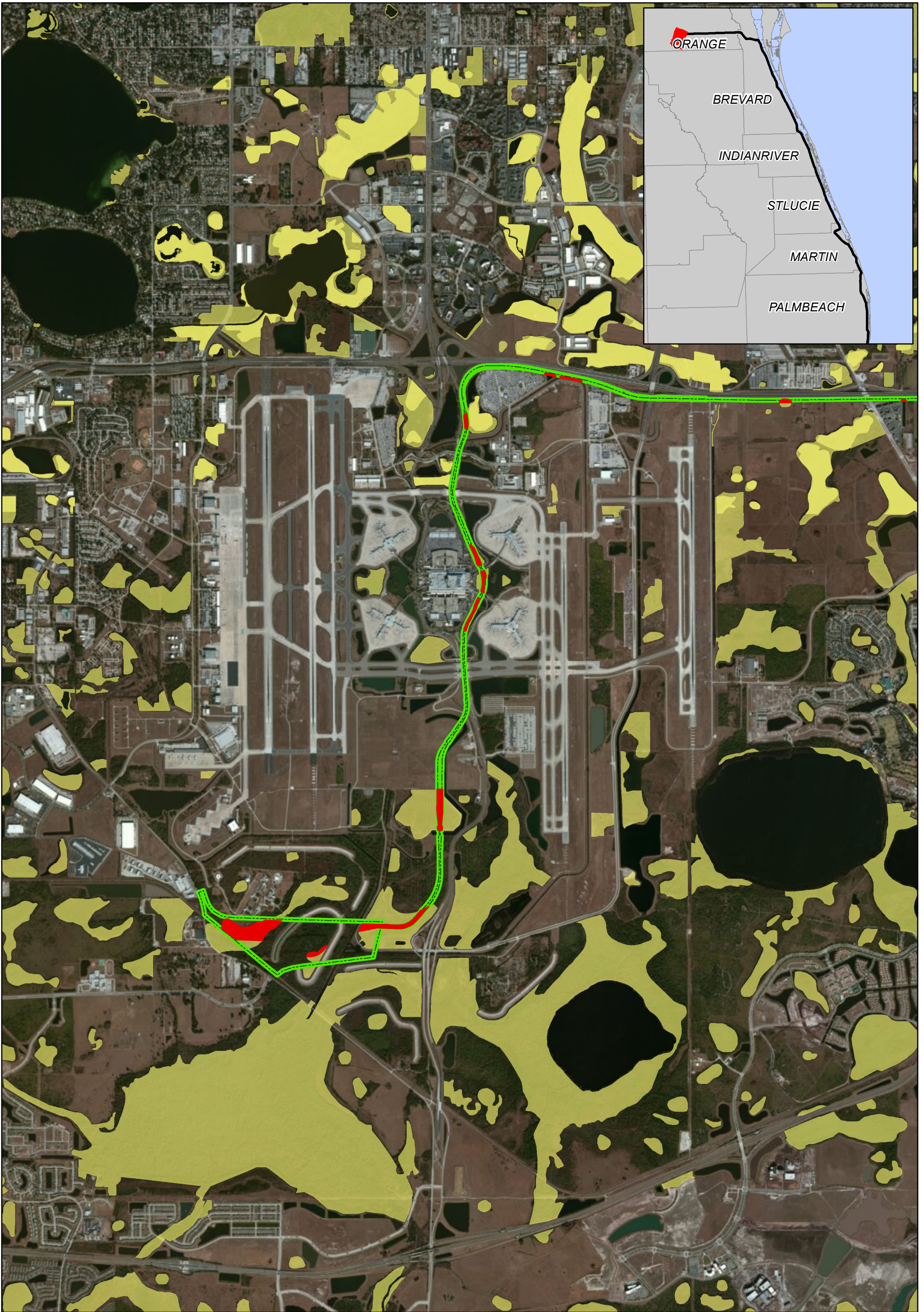
Explanation of Features

- Impacted Wetlands
- Wetlands
- N-S Corridor Extension
- E-W Corridor Extension

Data Sources: ESRI Bing Maps 2012 Imagery, SJRWMD 2009, SFWMD 2004, AAF 2012

| | |
|-------------------------------------------------------------------------------------|----------------------------------------------|
| Location of Impacted Wetlands Along the E-W Corridor | |
| All Aboard Florida Intercity Passenger Rail Project | |
| <p>N</p> | <p>0 0.35 0.7 1.4 Miles</p> |
| <p>U.S. Department of Transportation Federal Railroad Administration</p> | <p><small>Project # 6063-12-0212</small></p> |

Path: F:\FECl\FECl_GDB\MXD\EIS\Location of Impacted Wetlands Along the E-W Corridor_v5.mxd



Explanation of Features

- Impacted Wetlands
- Wetlands
- N-S Corridor Extension
- E-W Corridor Extension

Data Sources: ESRI Bing Maps 2012 Imagery, SJRWMD 2009, SFWMD 2004, AAF 2012

Location of Impacted Wetlands Along the E-W Corridor

All Aboard Florida Intercity Passenger Rail Project



0 0.35 0.7 1.4 Miles



U.S. Department of Transportation
Federal Railroad Administration