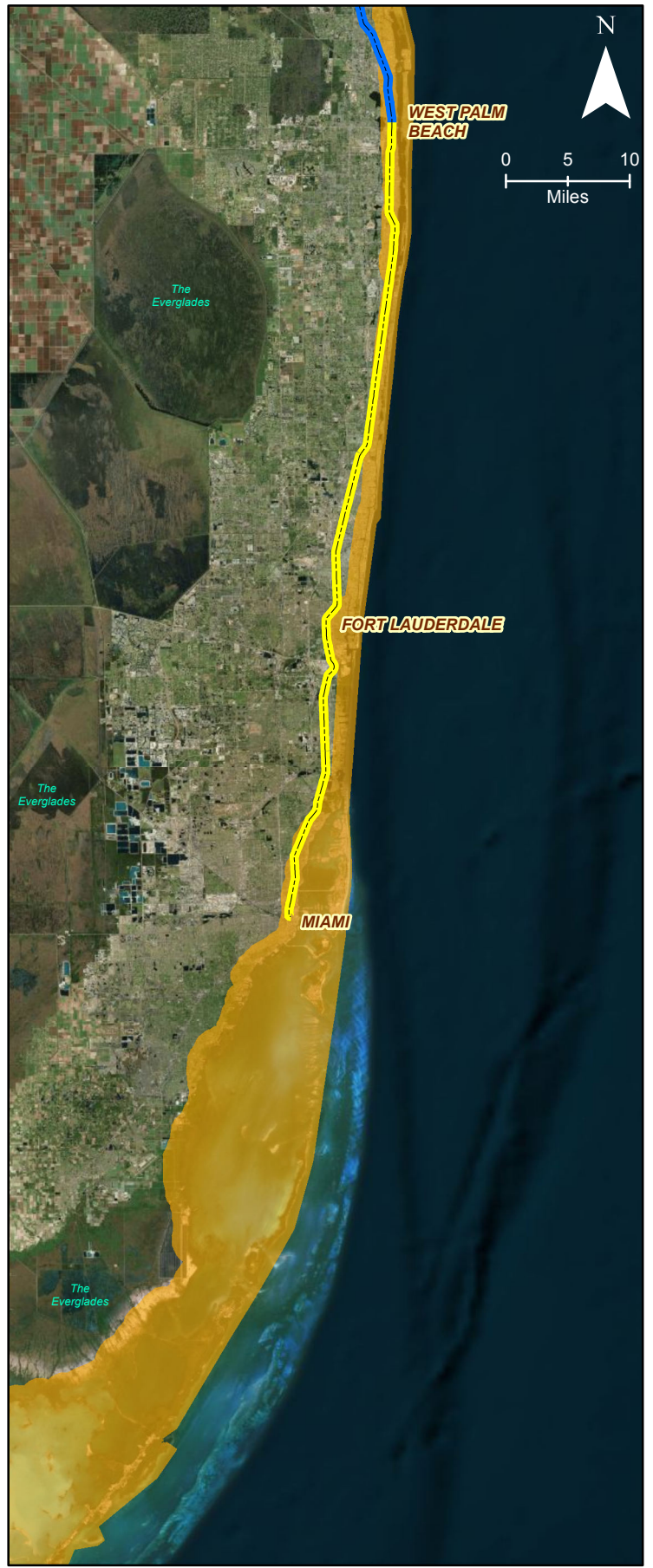
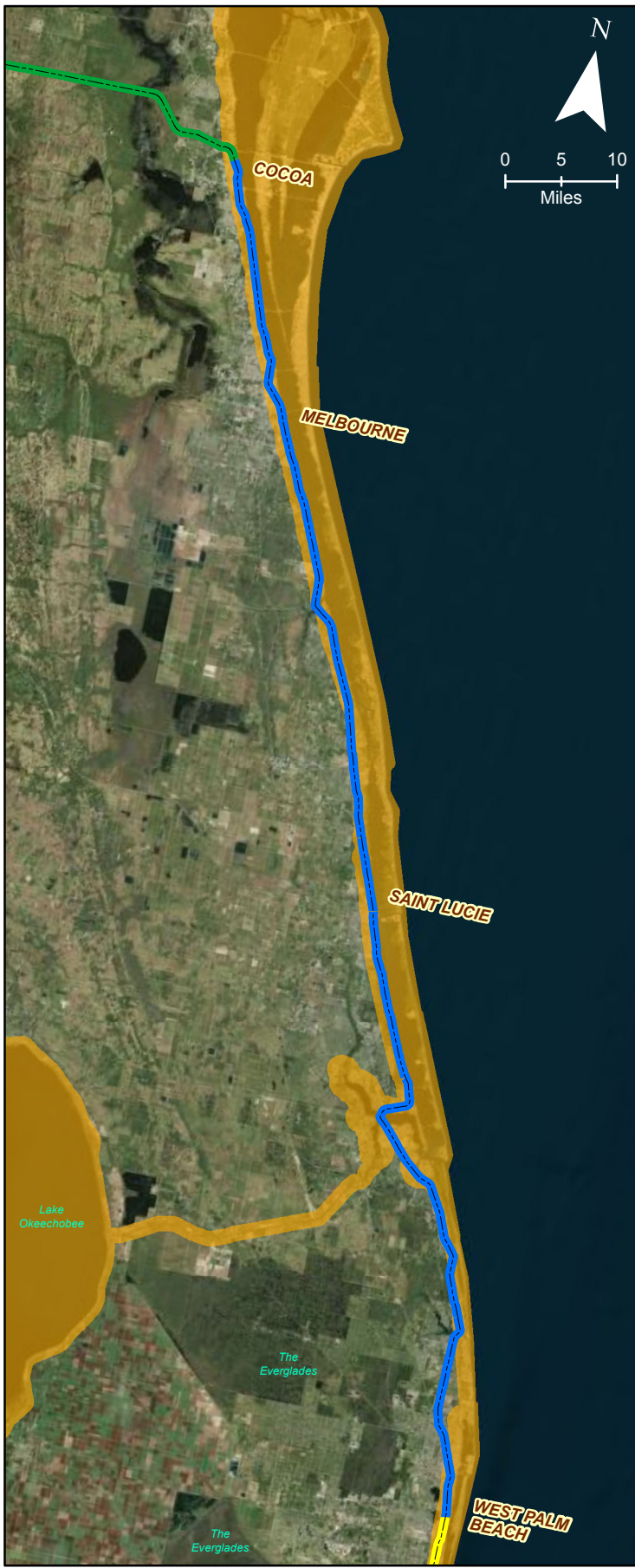


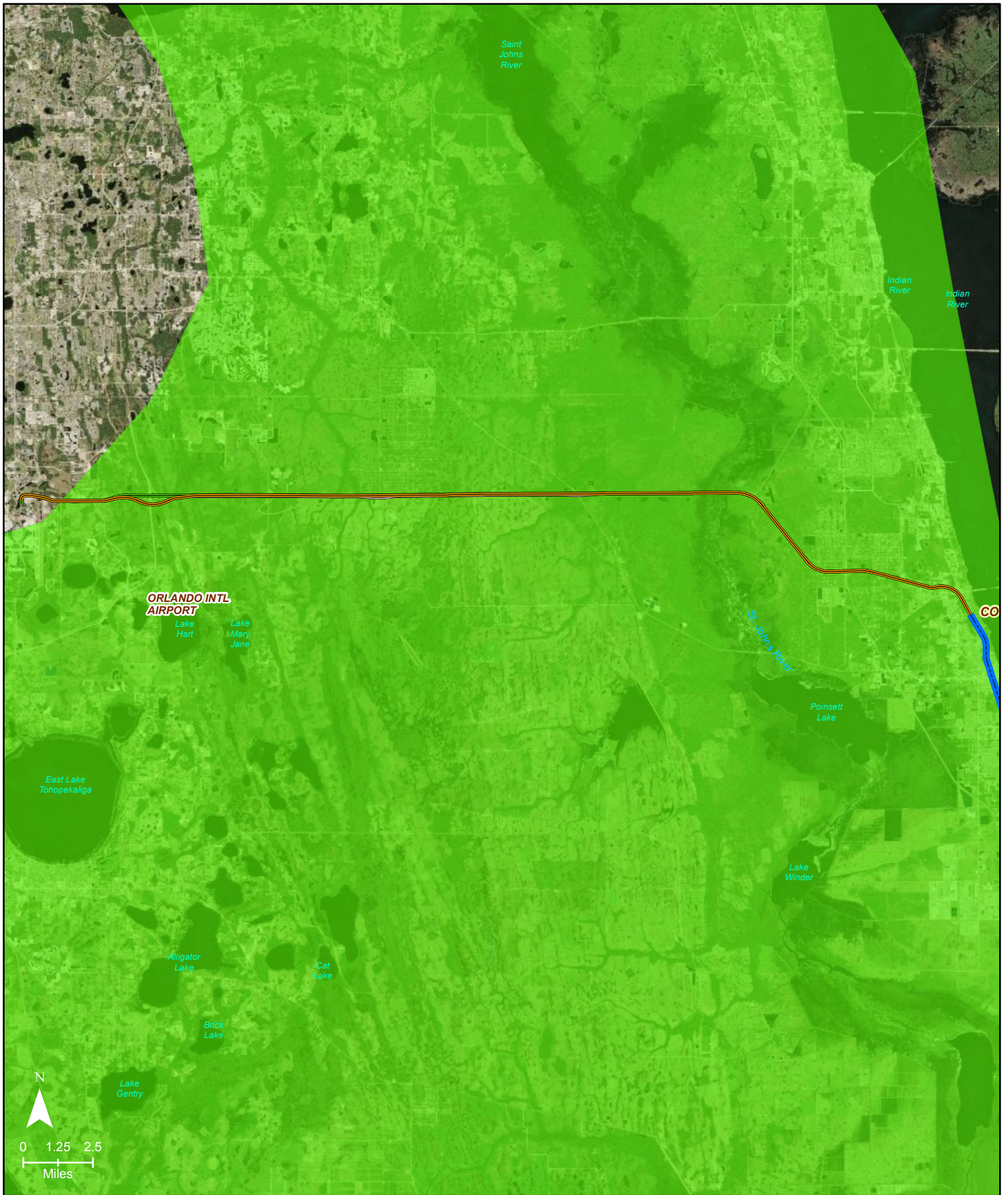
- Alternative C-East/West Study Area Line
- Alternative A-East/West Study Area Line
- Alternative E-East/West Study Area Line
- North-South Corridor Extension (WPB-Cocoa) 128.5 Miles
- WEST INDIAN MANATEE CONSULTATION AREA

East/West West Indian Manatee Consultation Area Map	
All Aboard Florida Intercity Passenger Rail Project	



- East-West Corridor Extension (Cocoa-Orlando) 40 Miles
- - - North-South Corridor Extension (WPB-Cocoa) 128.5 Miles
- - - MIA-WPB 66.5 Miles (FONSI 1/30/13)
- WEST INDIAN MANATEE CONSULTATION AREA

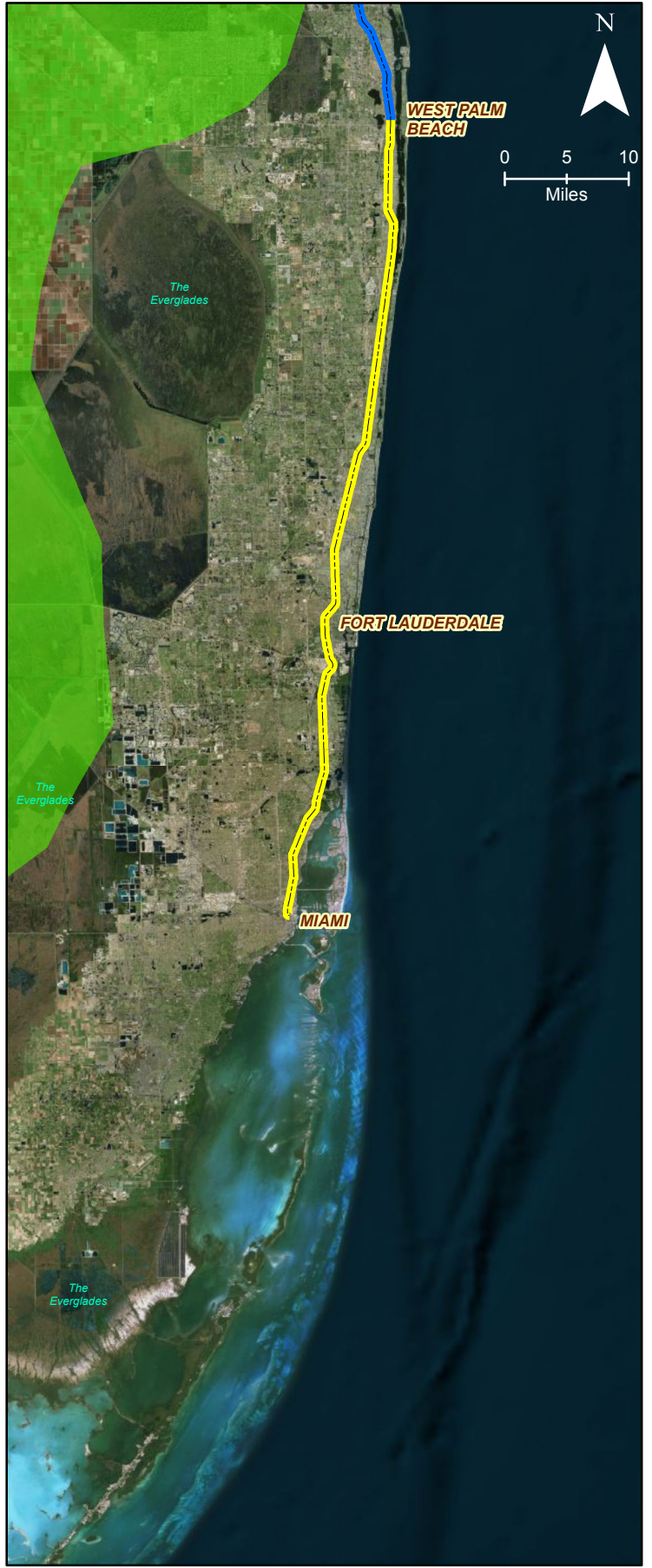
North/South West Indian Manatee Consultation Area Map	
All Aboard Florida Intercity Passenger Rail Project	



Explanation of Features

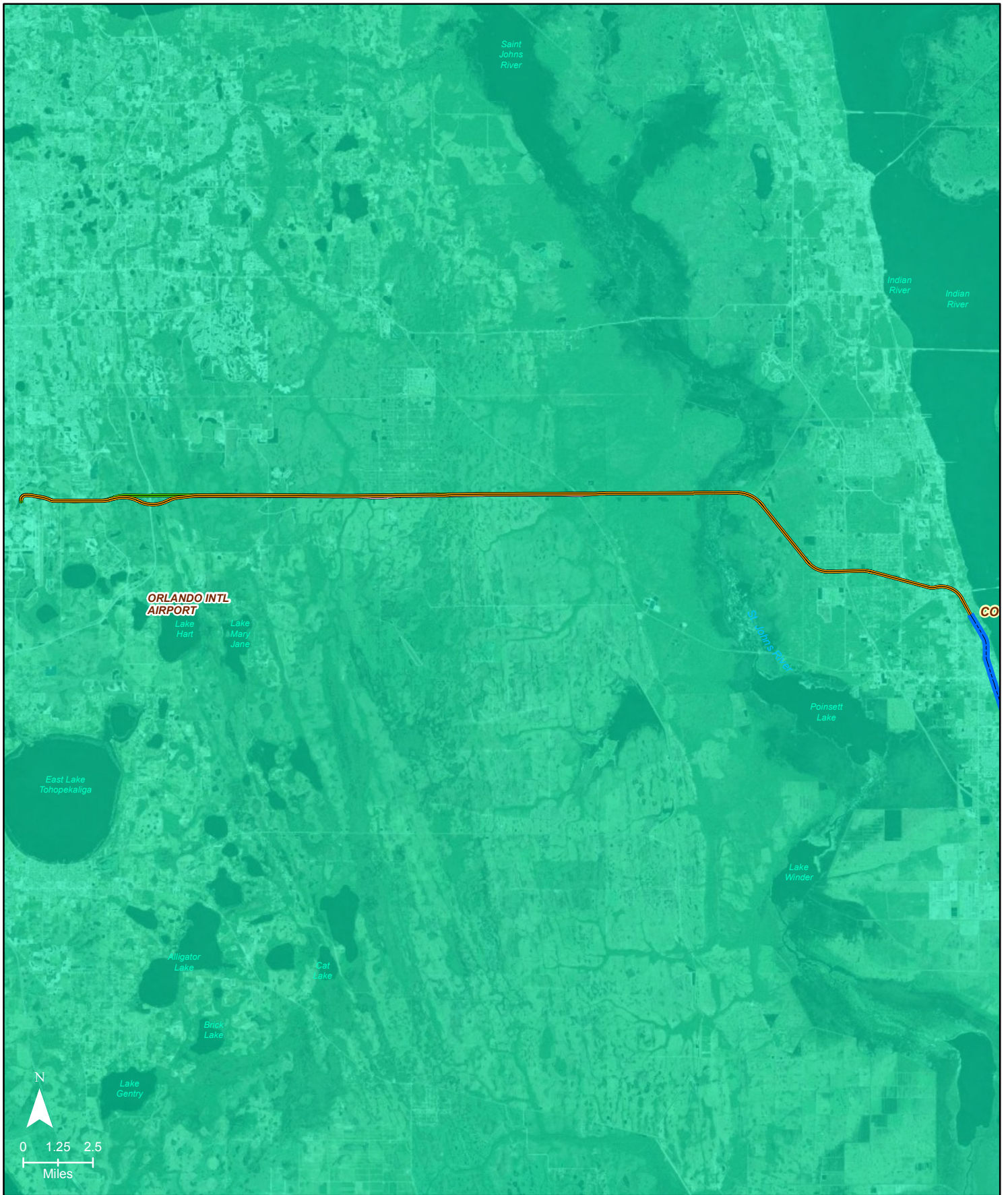
- Alternative C-East/West Study Area Line
- Alternative A-East/West Study Area Line
- Alternative E-East/West Study Area Line
- North-South Corridor Extension (WPB-Cocoa) 128.5 Miles
- CRESTED CARACARA CONSULTATION AREA

East/West Crested Caracara Consultation Area Map	
All Aboard Florida Intercity Passenger Rail Project	



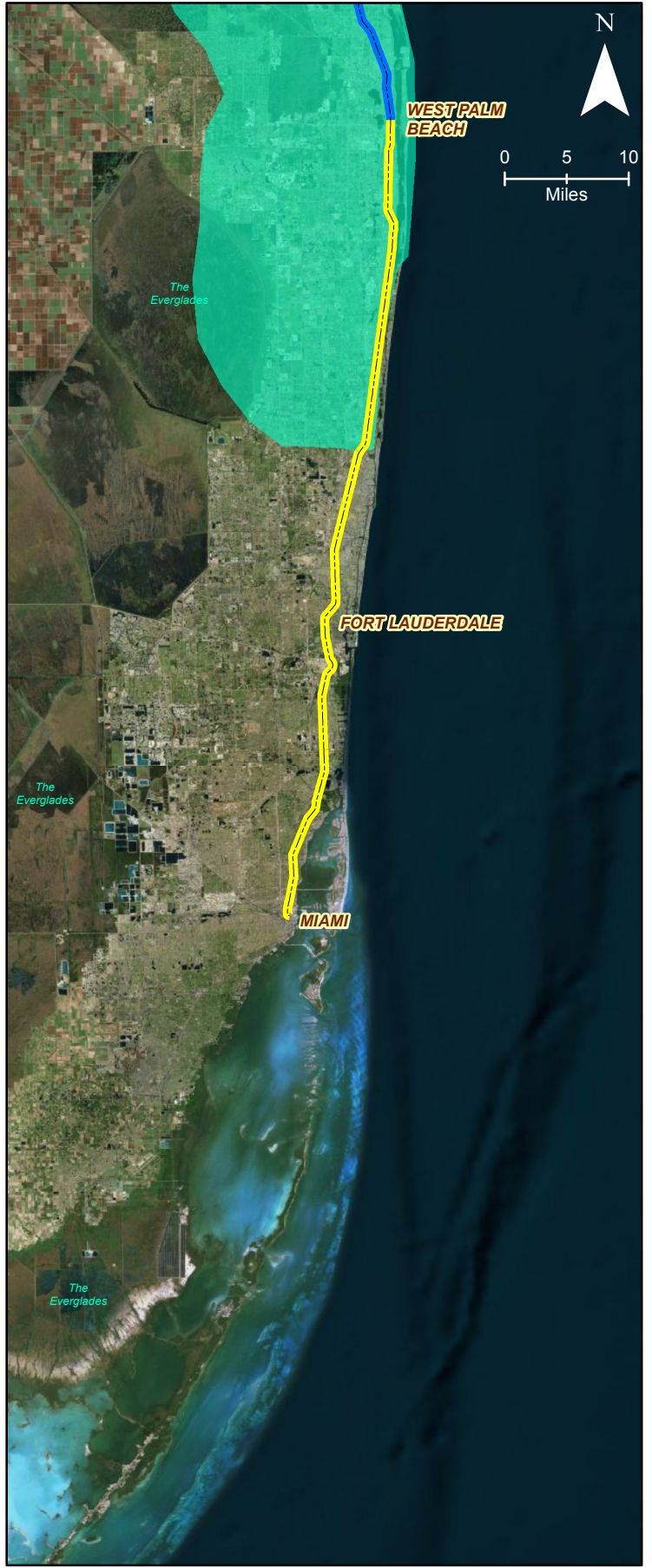
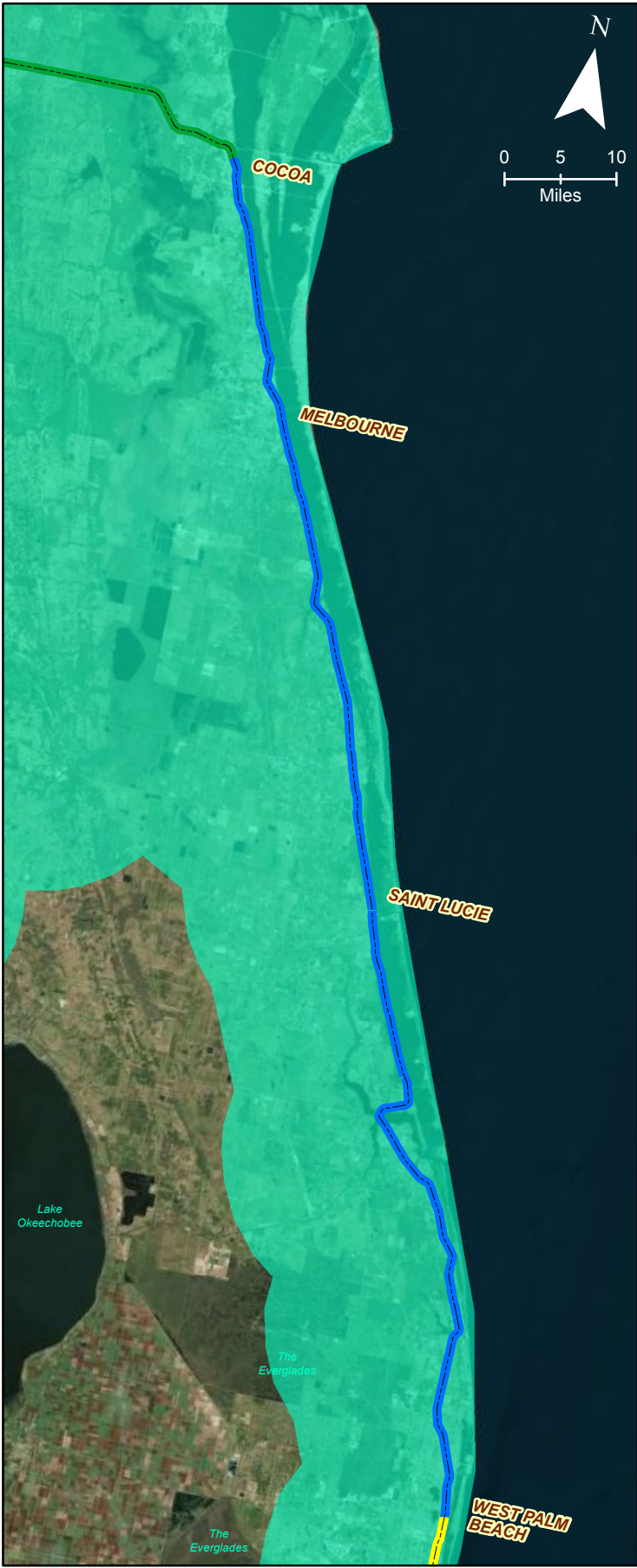
- East-West Corridor Extension (Cocoa-Orlando) 40 Miles
- - - North-South Corridor Extension (WPB-Cocoa) 128.5 Miles
- - - MIA-WPB 66.5 Miles (FONSI 1/30/13)
- CRESTED CARACARA CONSULTATION AREA

North/South Crested Caracara Consultation Area Map	
All Aboard Florida Intercity Passenger Rail Project	



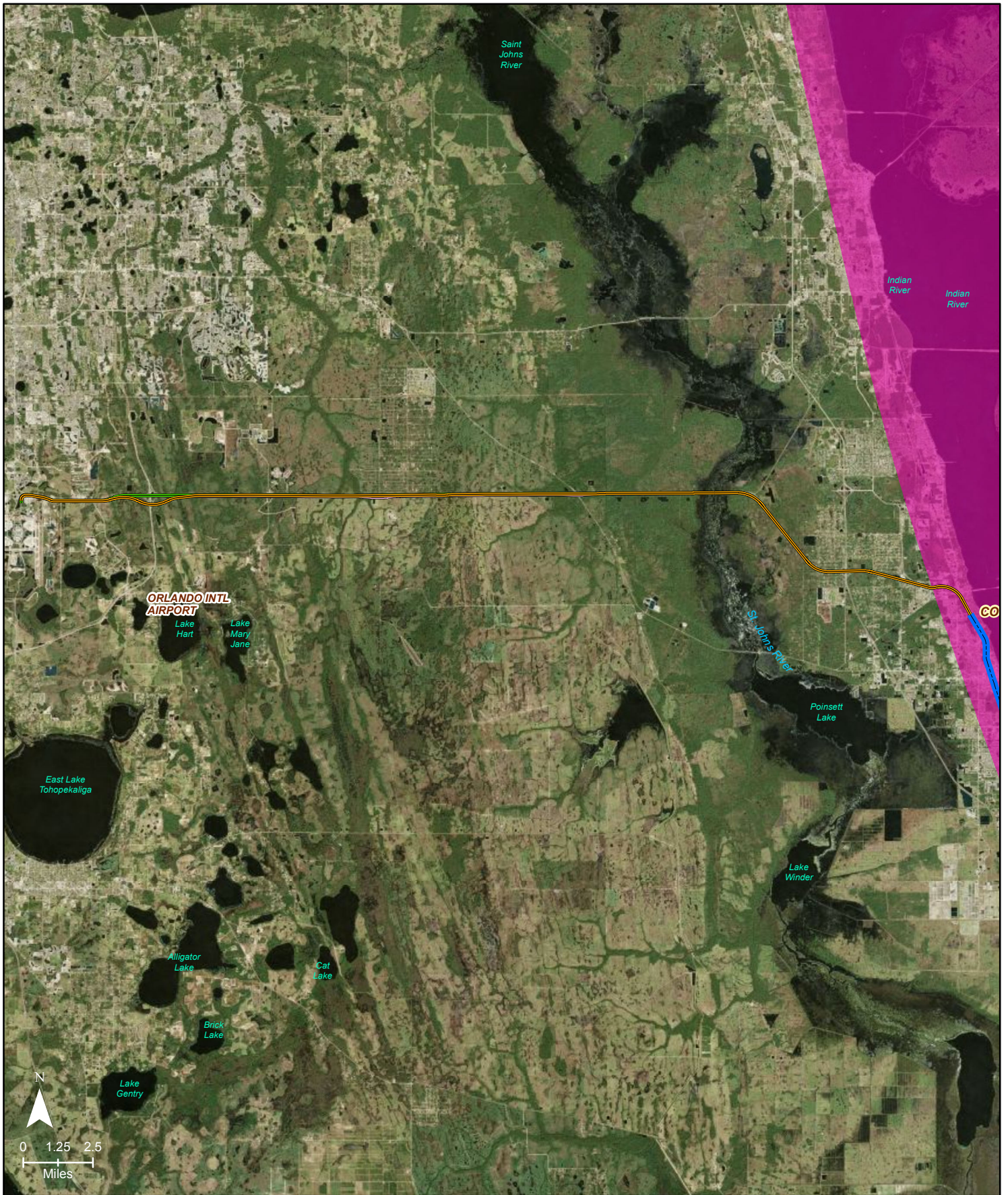
- Alternative C-East/West Study Area Line
- Alternative A-East/West Study Area Line
- Alternative E-East/West Study Area Line
- North-South Corridor Extension (WPB-Cocoa) 128.5 Miles
- SCRUB-JAY CONSULTATION AREA

East/West Florida Scrub-Jay Consultation Area Map	
All Aboard Florida Intercity Passenger Rail Project	



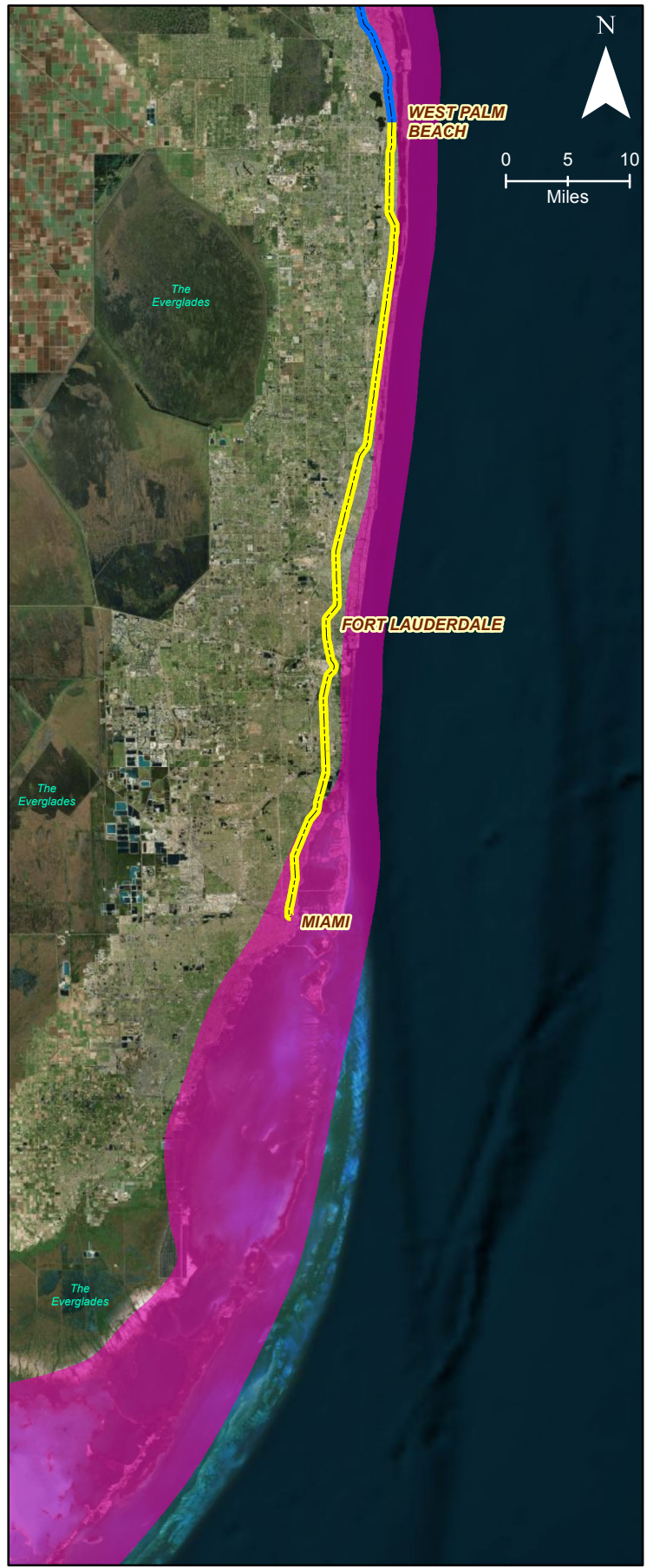
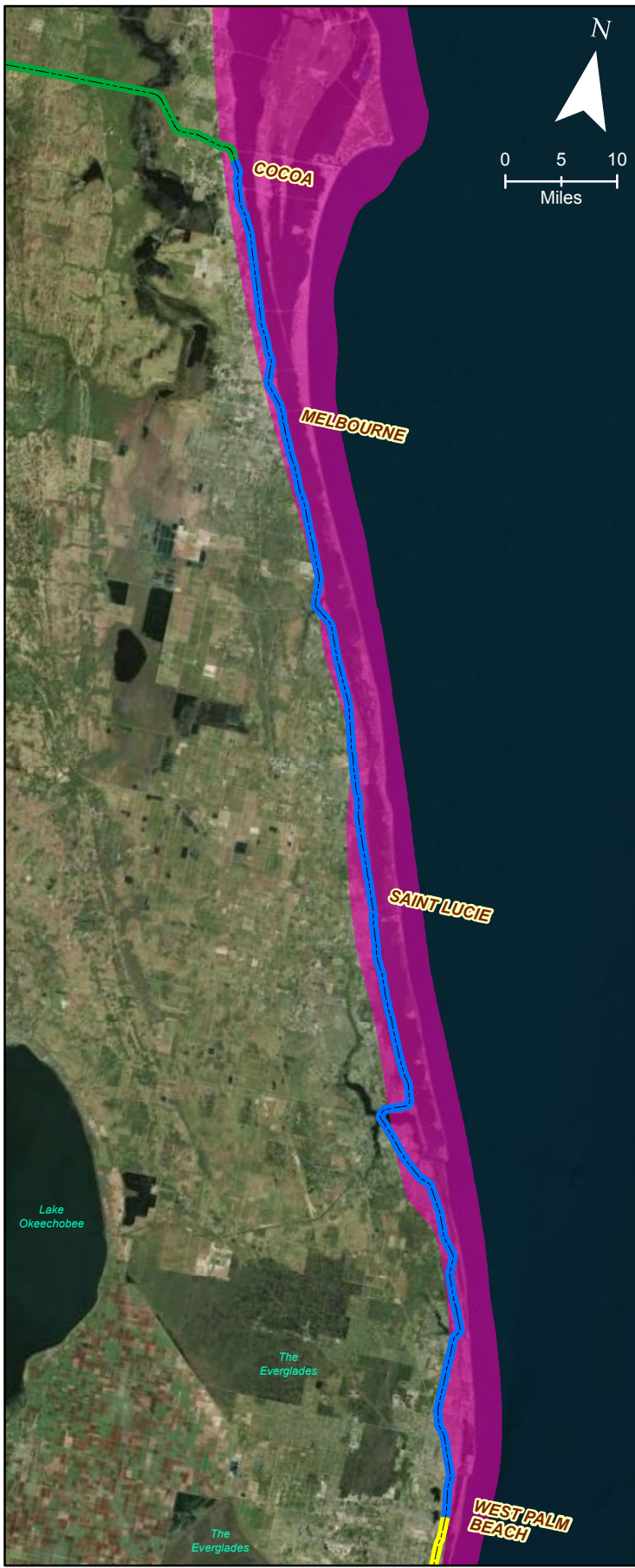
- East-West Corridor Extension (Cocoa-Orlando) 40 Miles
- - - North-South Corridor Extension (WPB-Cocoa) 128.5 Miles
- - - MIA-WPB 66.5 Miles (FONSI 1/30/13)
- SCRUB-JAY CONSULTATION AREA

North/South Florida Scrub-Jay Consultation Area Map	
All Aboard Florida Intercity Passenger Rail Project	



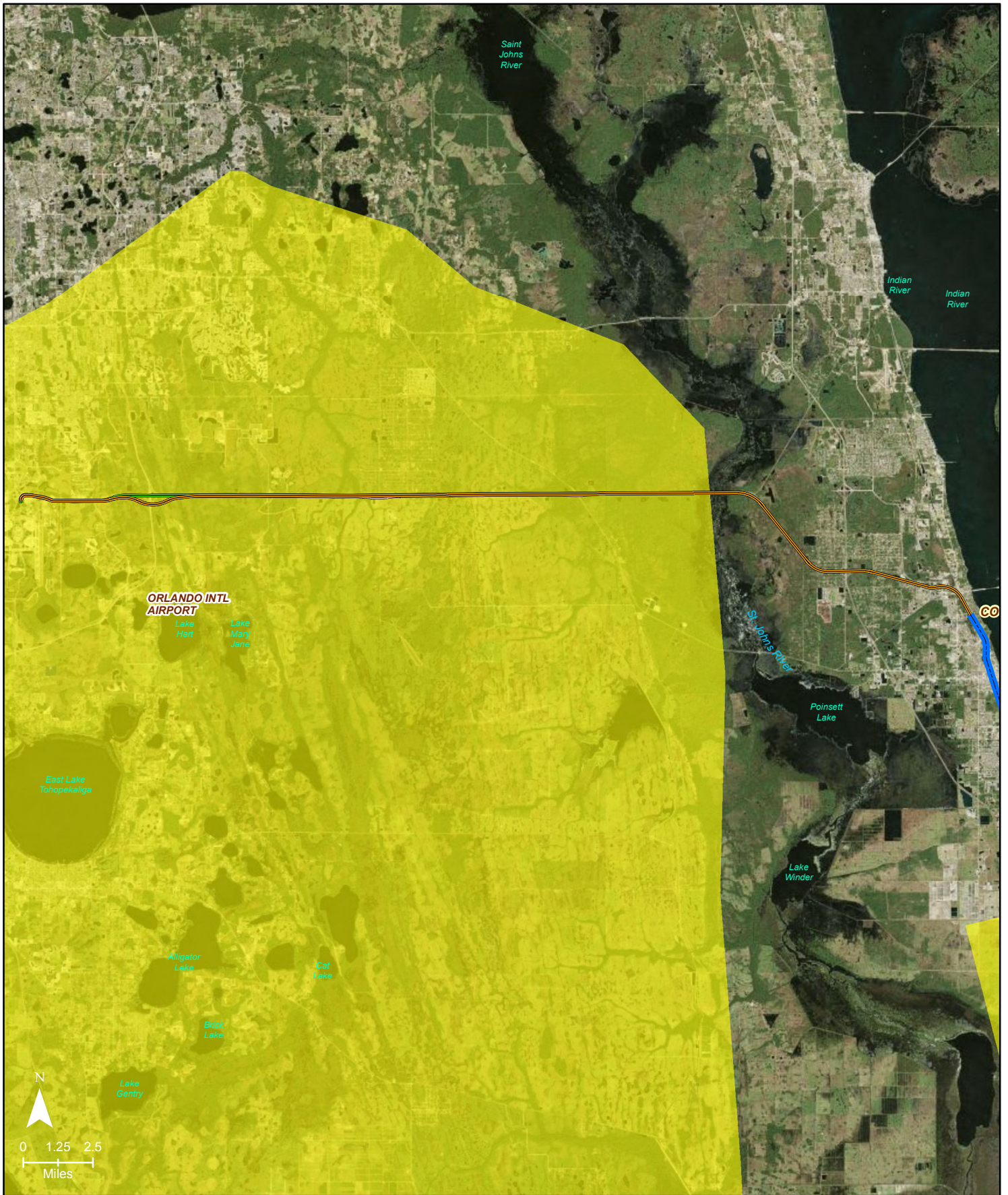
- Alternative C-East/West Study Area Line
- Alternative A-East/West Study Area Line
- Alternative E-East/West Study Area Line
- North-South Corridor Extension (WPB-Cocoa) 128.5 Miles
- PIPING PLOVER CONSULTATION AREA

East/West Piping Plover Consultation Area Map	
All Aboard Florida Intercity Passenger Rail Project	
Path: F:\FEC\FEC1_GDB\MXD\EA\EW PIPING PLOVER CONSULTATION AREA.mxd	



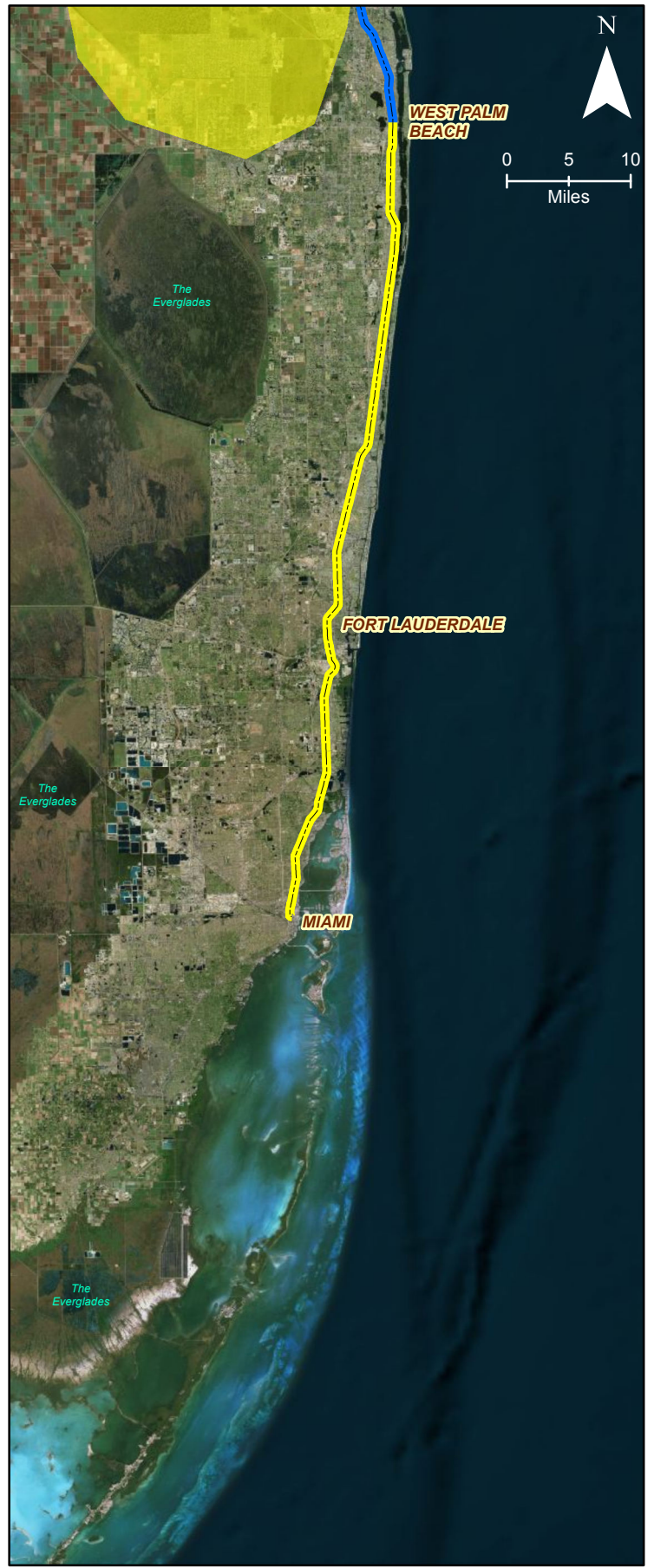
- East-West Corridor Extension (Cocoa-Orlando) 40 Miles
- - - North-South Corridor Extension (WPB-Cocoa) 128.5 Miles
- - - MIA-WPB 66.5 Miles (FONSI 1/30/13)
- PIPING PLOVER CONSULTATION AREA

North/South Piping Plover Consultation Area Map	
All Aboard Florida Intercity Passenger Rail Project	



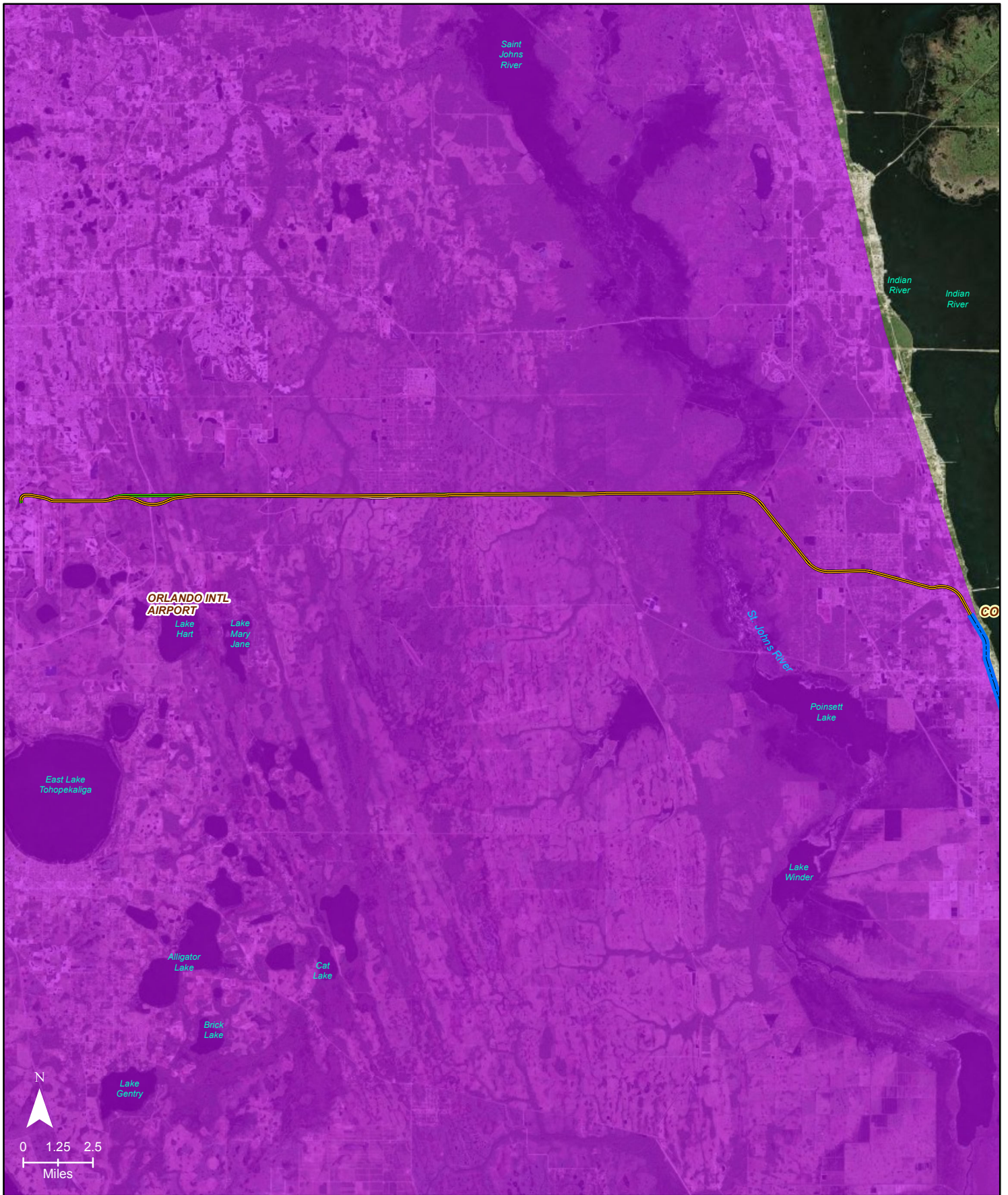
- Alternative C-East/West Study Area Line
- Alternative A-East/West Study Area Line
- Alternative E-East/West Study Area Line
- North-South Corridor Extension (WPB-Cocoa) 128.5 Miles
- RED COCKADED WOODPECKER CONSULTATION AREA

East/West Red Cockaded Woodpecker Consultation Area Map	
All Aboard Florida Intercity Passenger Rail Project	



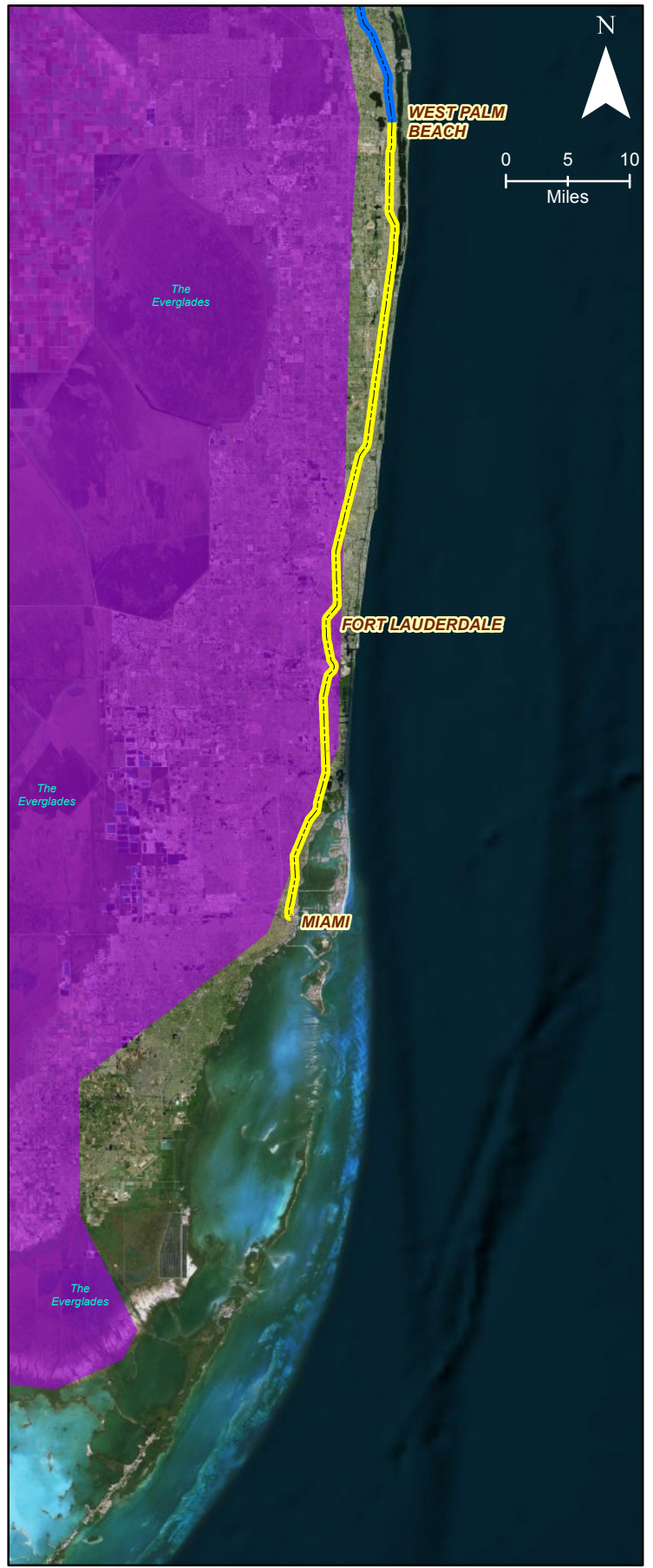
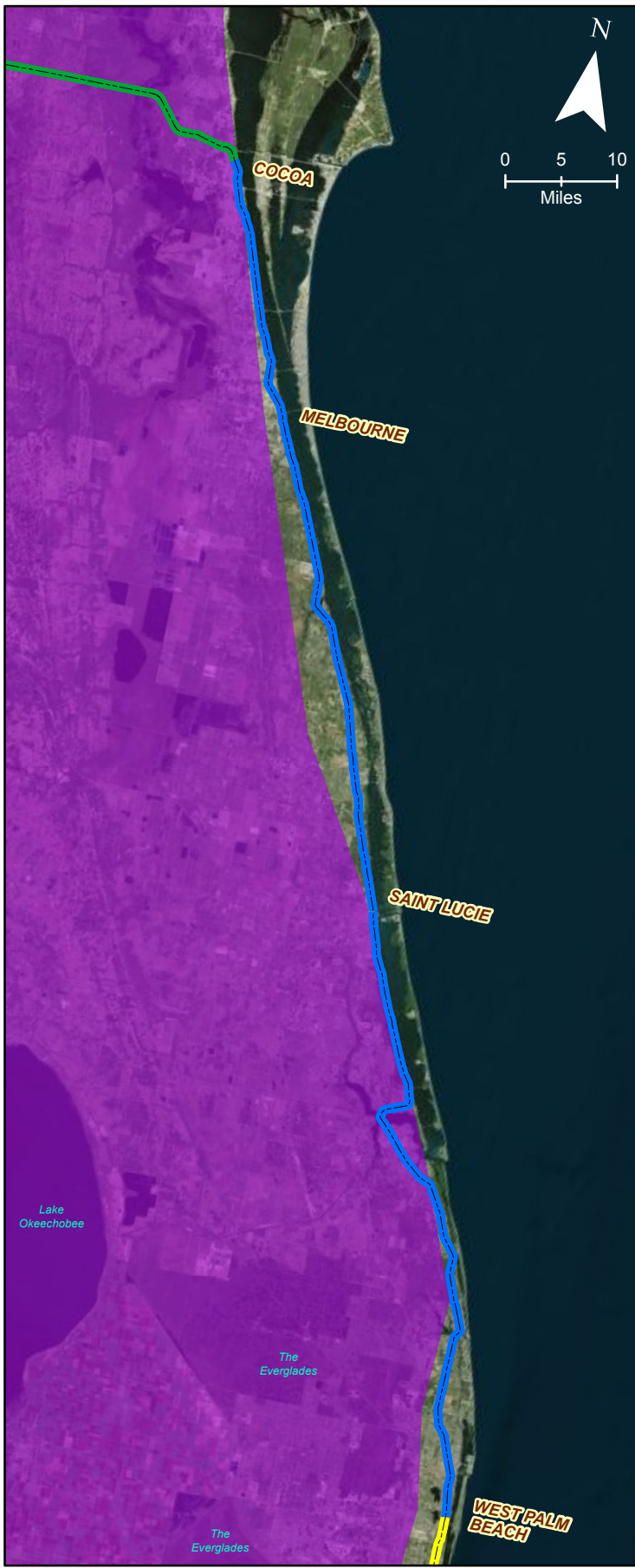
- East-West Corridor Extension (Cocoa-Orlando) 40 Miles
- North-South Corridor Extension (WPB-Cocoa) 128.5 Miles
- MIA-WPB 66.5 Miles (FONSI 1/30/13)
- RED COCKADED WOODPECKER CONSULTATION AREA

North/South Red Cockaded Woodpecker Consultation Area Map	
All Aboard Florida Intercity Passenger Rail Project	



- Alternative C-East/West Study Area Line
- Alternative A-East/West Study Area Line
- Alternative E-East/West Study Area Line
- North-South Corridor Extension (WPB-Cocoa) 128.5 Miles
- SNAIL KITE CONSULTATION AREA

East/West Snail Kite Consultation Area Map	
All Aboard Florida Intercity Passenger Rail Project	

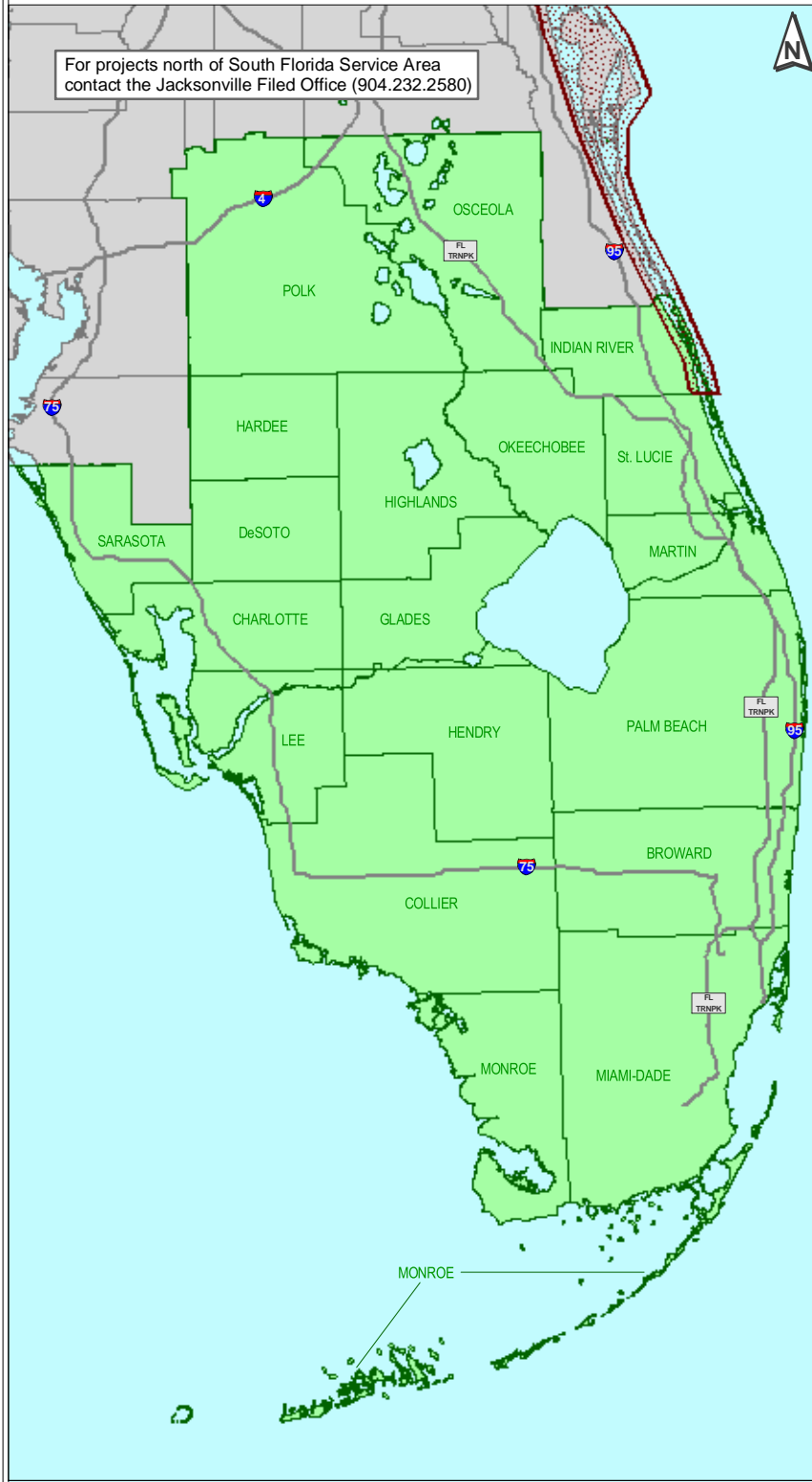


- East-West Corridor Extension (Cocoa-Orlando) 40 Miles
- North-South Corridor Extension (WPB-Cocoa) 128.5 Miles
- - - MIA-WPB 66.5 Miles (FONSI 1/30/13)
- SNAIL KITE CONSULTATION AREA

North/South Snail Kite Consultation Area Map	
All Aboard Florida Intercity Passenger Rail Project	

Atlantic Salt Marsh Snake

For projects north of South Florida Service Area contact the Jacksonville Filed Office (904.232.2580)



Consultation Area Map

September 29, 2003

-  Atlantic Salt Marsh Snake Consultation Area
-  South Florida Service Area



Produced by:
South Florida Ecological Services Office
<http://verobeach.fws.gov>
Phone: 772.562.3909

Disclaimer:
The information on this map has been compiled from a variety of sources and is intended for illustration purposes only.

