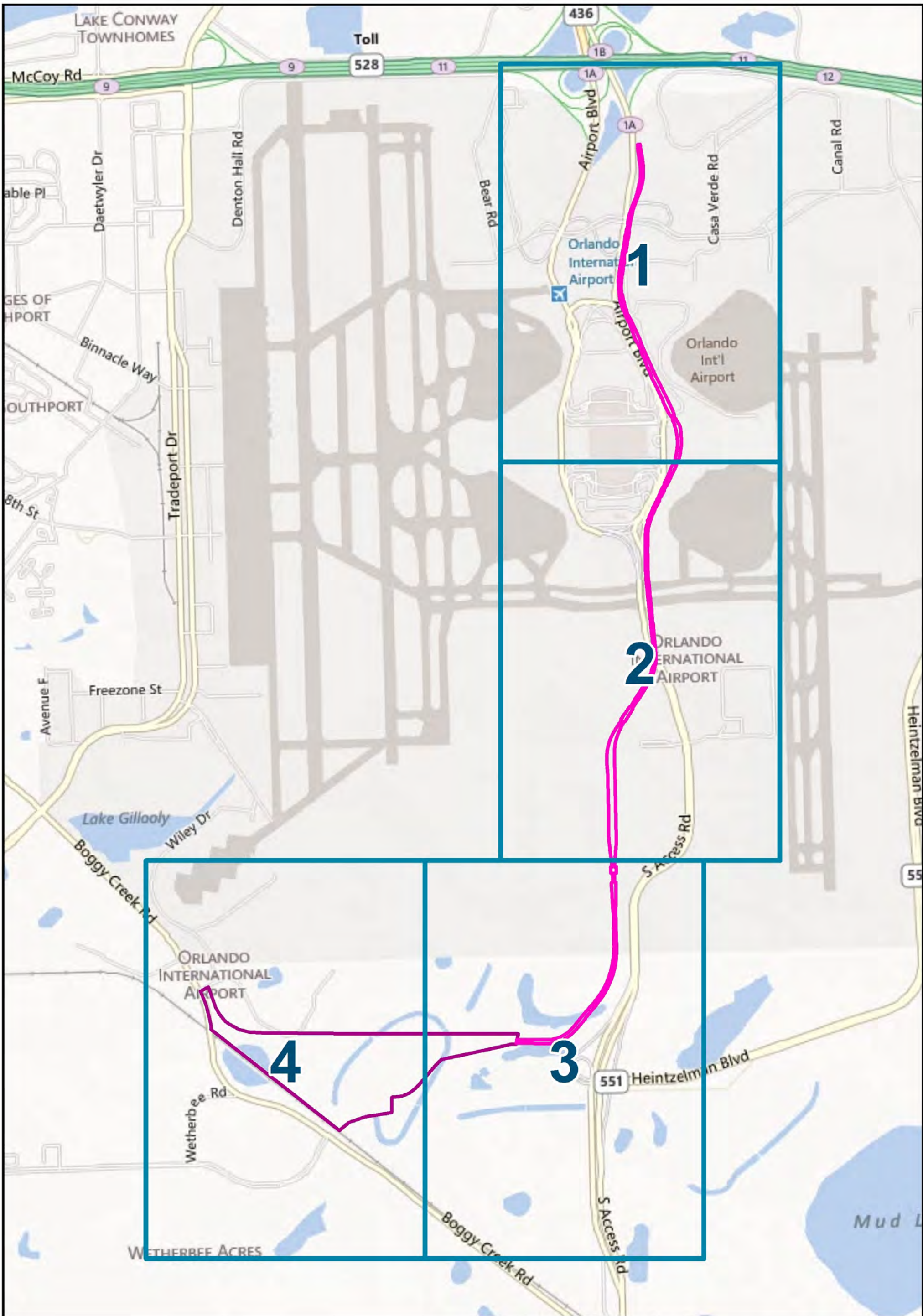


APPENDIX D:

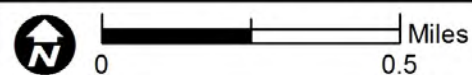
**AERIAL MAPPING SHOWING THE AIRPORT RAILWAY ALIGNMENT
AND VMF APE AND THE LOCATIONS OF CULTURAL RESOURCES
IDENTIFIED WITHIN THE AIRPORT RAILWAY ALIGNMENT
AND VMF APE**

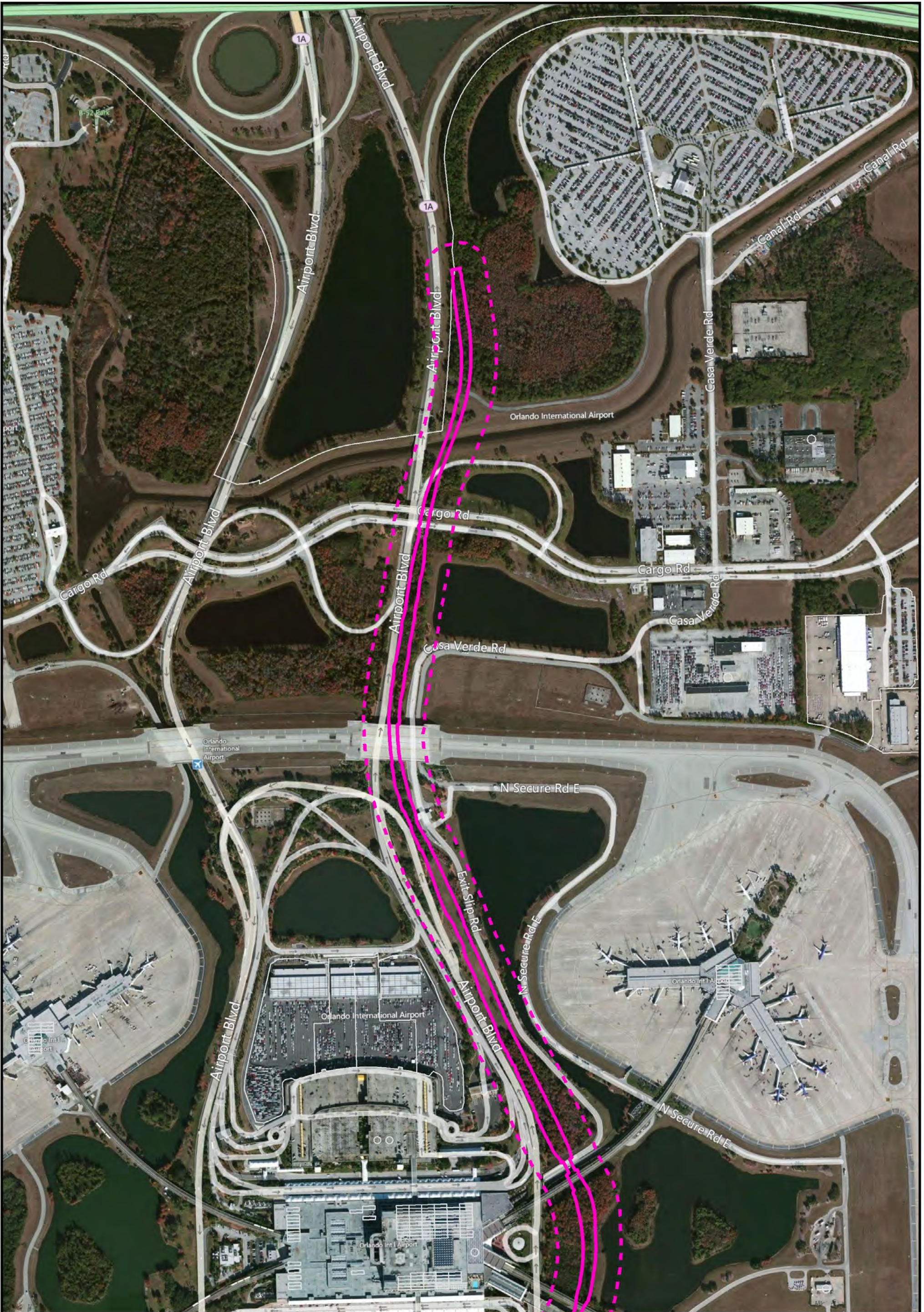


- Vehicle Maintenance Facility (VMF) Footprint
- Orlando International Airport (MCO) Alignment
- Mapping Frames

Identified Cultural Resources within the Archaeological and Historic Resources APE Established for the Airport Alignment and VMF

Overview Map





- Vehicle Maintenance Facility (VMF) Footprint
- Orlando International Airport (MCO) Alignment
- 150-Foot Buffer of MCO Alignment
- Archaeological Site

Note: The archaeological APE included the footprint of the Airport Alignment and the VMF. The historic resources APE included a buffer of 150 feet out from the Airport Alignment and the footprint of the VMF.

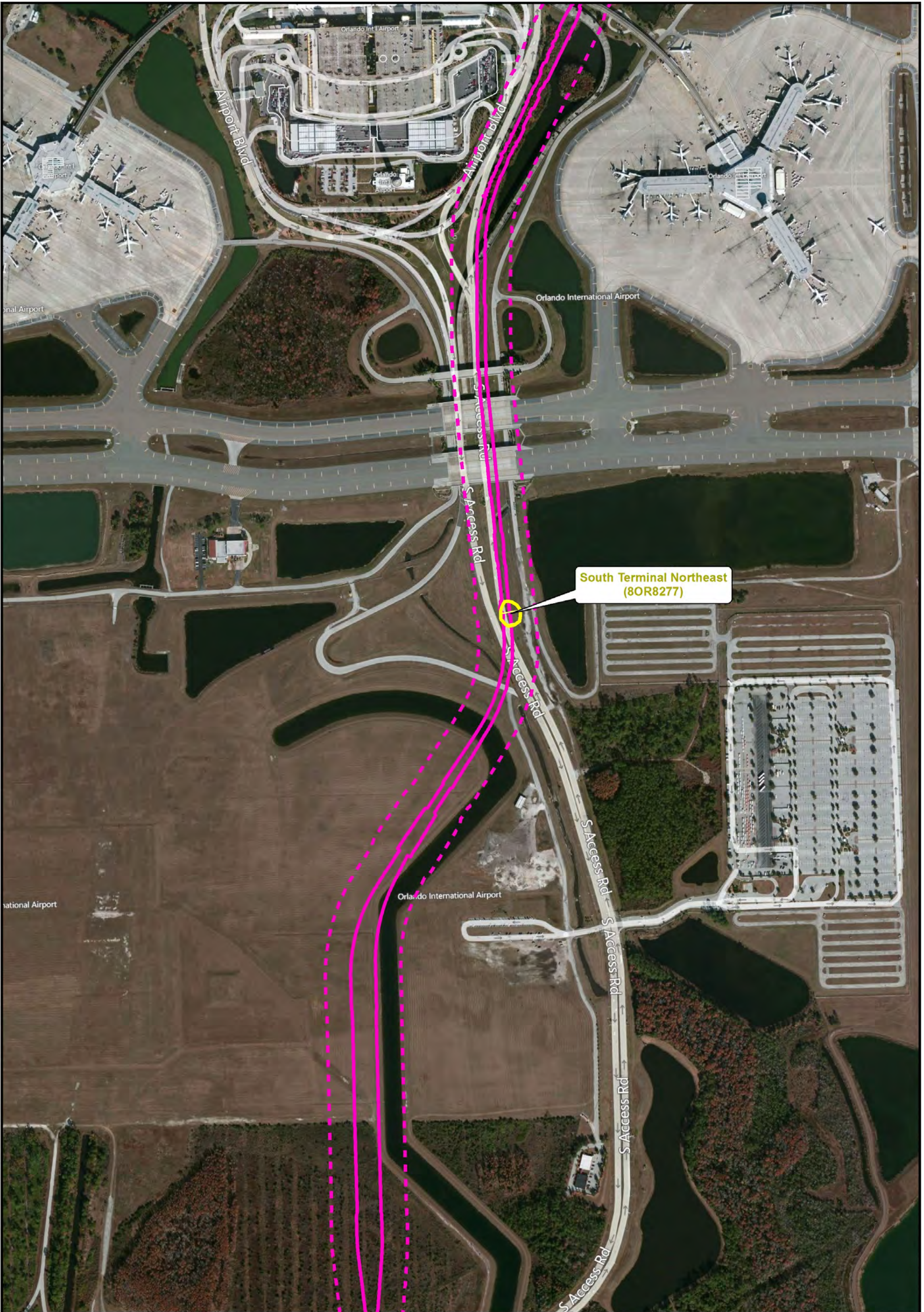
Identified Cultural Resources within the Archaeological and Historic Resources APE Established for the Airport Alignment and VMF

Orange County

0
300
600

Feet

Map
1




South Terminal Northeast
(8OR8277)

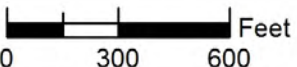
- Vehicle Maintenance Facility (VMF) Footprint
- Orlando International Airport (MCO) Alignment
- 150-Foot Buffer of MCO Alignment
- Archaeological Site

Note: The archaeological APE included the footprint of the Airport Alignment and the VMF. The historic resources APE included a buffer of 150 feet out from the Airport Alignment and the footprint of the VMF.

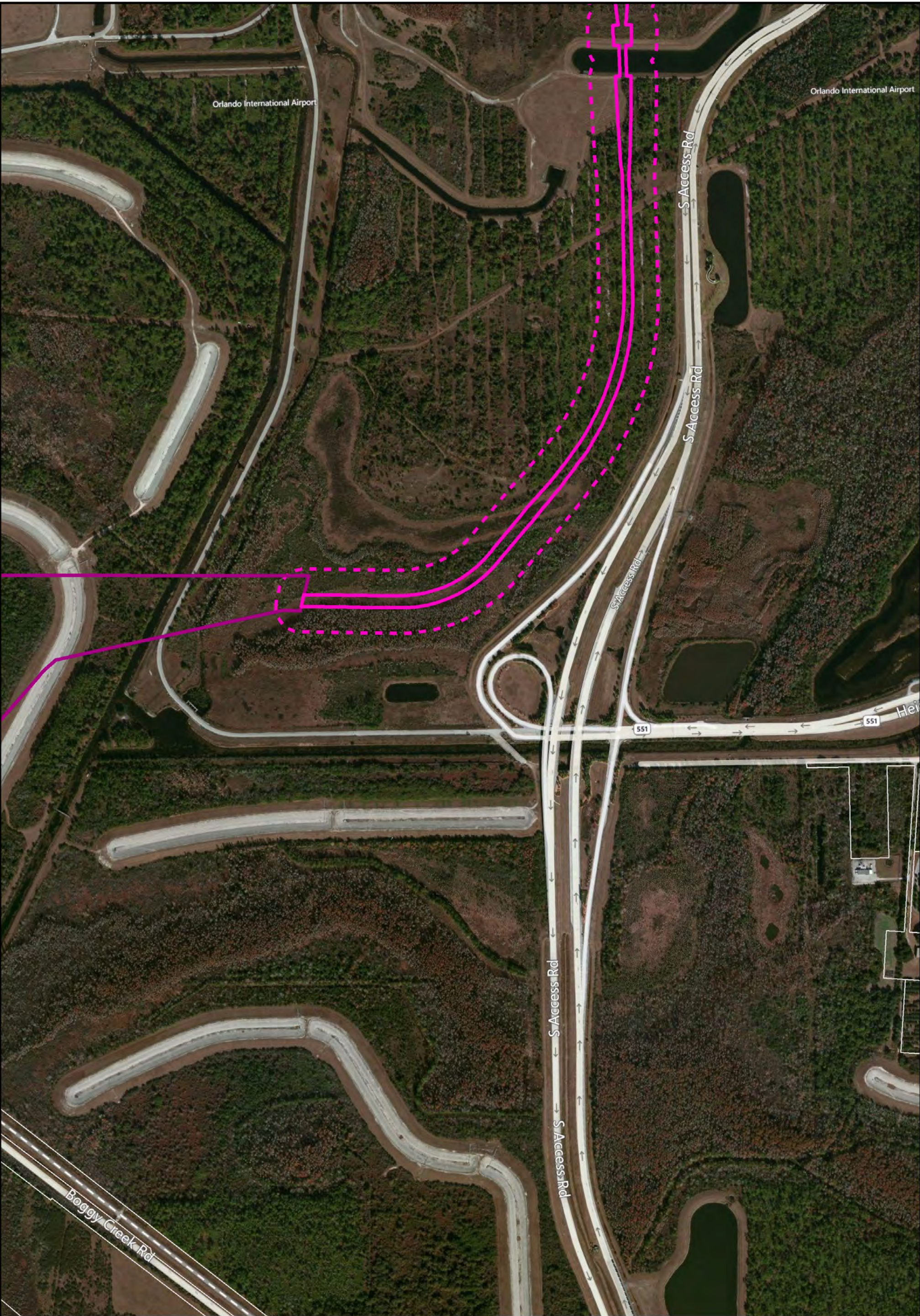
Identified Cultural Resources within the Archaeological and Historic Resources APE Established for the Airport Alignment and VMF

Orange County





Map
2




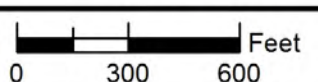
- Vehicle Maintenance Facility (VMF) Footprint
- Orlando International Airport (MCO) Alignment
- 150-Foot Buffer of MCO Alignment
- Archaeological Site

Note: The archaeological APE included the footprint of the Airport Alignment and the VMF. The historic resources APE included a buffer of 150 feet out from the Airport Alignment and the footprint of the VMF.

Identified Cultural Resources within the Archaeological and Historic Resources APE Established for the Airport Alignment and VMF

Orange County





Map 3



- Vehicle Maintenance Facility (VMF) Footprint
- Orlando International Airport (MCO) Alignment
- 150-Foot Buffer of MCO Alignment
- Archaeological Site

Note: The archaeological APE included the footprint of the Airport Alignment and the VMF. The historic resources APE included a buffer of 150 feet out from the Airport Alignment and the footprint of the VMF.

Identified Cultural Resources within the Archaeological and Historic Resources APE Established for the Airport Alignment and VMF

Orange County

0 300 600

Feet

Map
4