

# **Appendix 3.3.3-A1**

## **MCO Segment Planset**

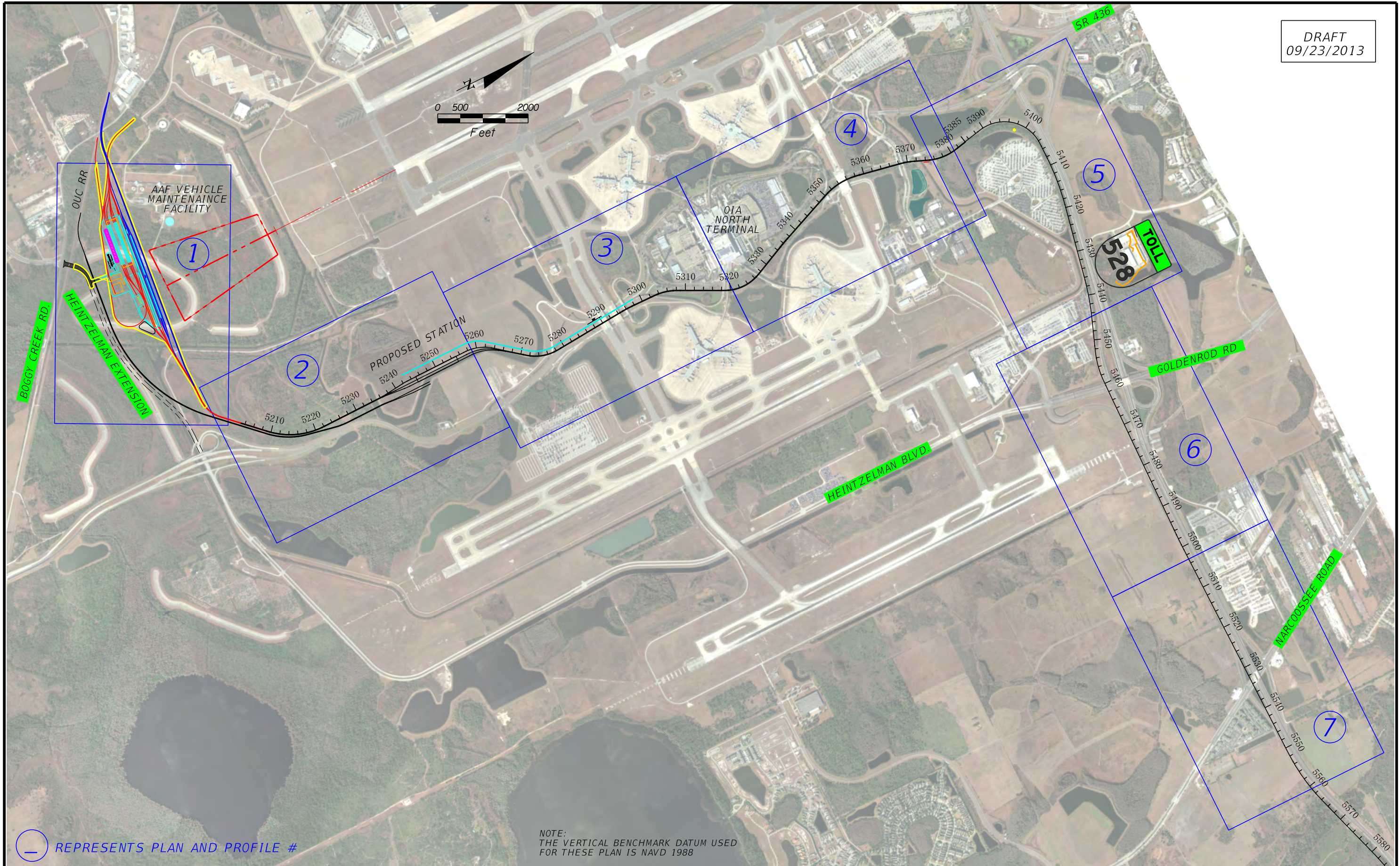
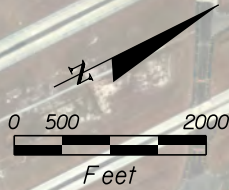
# *AAF RAILWAY AT GOAA*

*AAF RAILWAY AT GOAA*

*ALL ABOARD FLORIDA INTERCITY PASSENGER RAIL PROJECT*



U.S. Department of Transportation  
Federal Railroad Administration

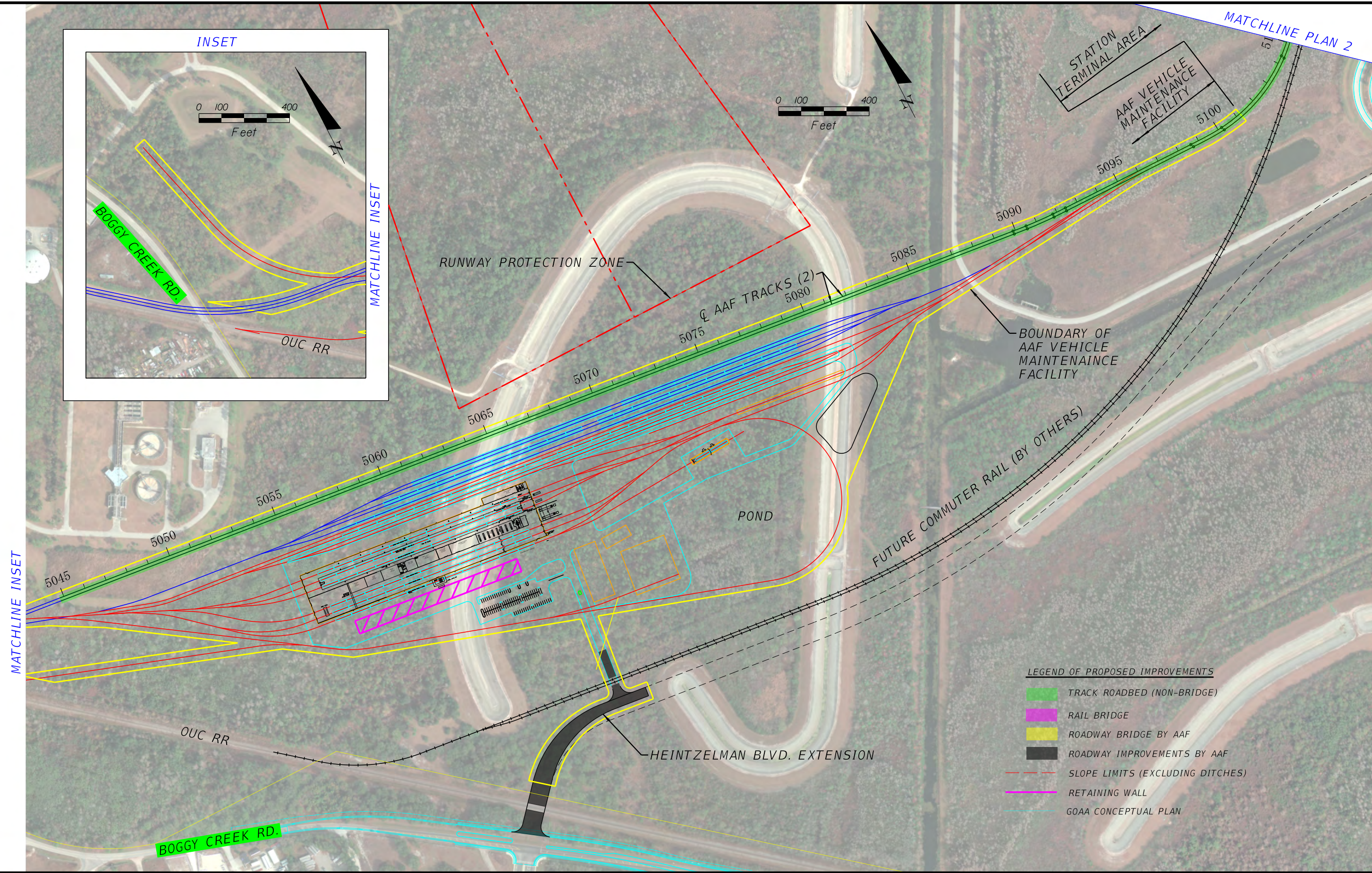
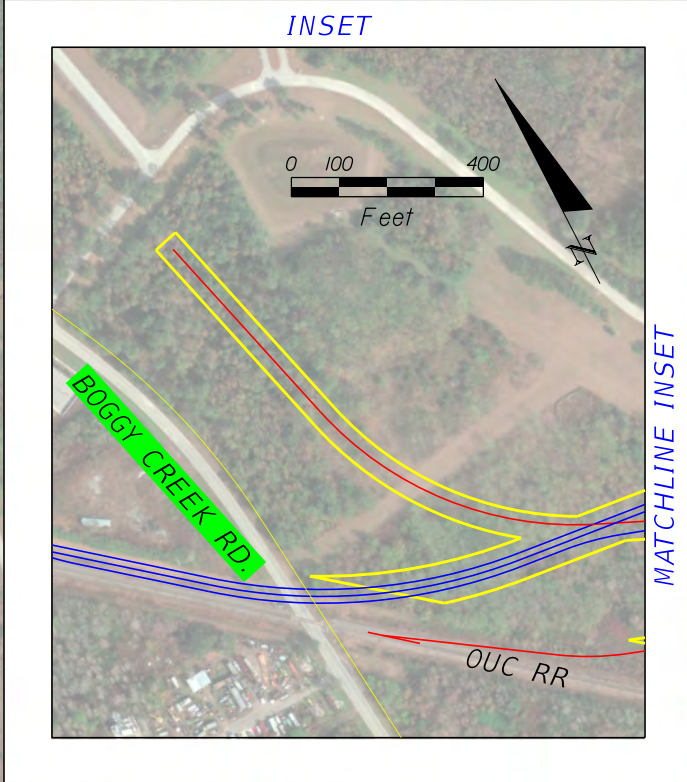


— REPRESENTS PLAN AND PROFILE #

NOTE:  
THE VERTICAL BENCHMARK DATUM USED  
FOR THESE PLAN IS NAVD 1988

**AAF RAILWAY AT GOAA**  
**ALL ABOARD FLORIDA INTERCITY PASSENGER RAIL PROJECT**





- LEGEND OF PROPOSED IMPROVEMENTS**
- TRACK ROADBED (NON-BRIDGE)
  - RAIL BRIDGE
  - ROADWAY BRIDGE BY AAF
  - ROADWAY IMPROVEMENTS BY AAF
  - SLOPE LIMITS (EXCLUDING DITCHES)
  - RETAINING WALL
  - GOAA CONCEPTUAL PLAN



MATCHLINE PLAN 1

5109+75.79 BACK =  
5203+00.00 AHEAD

SOUTH AIRPORT BLVD (FUTURE)

SOUTH TERMINAL (FUTURE)

AAF TRACKS (3)

MATCHLINE PLAN 3

- LEGEND OF PROPOSED IMPROVEMENTS**
- TRACK ROADBED (NON-BRIDGE)
  - RAIL BRIDGE
  - ROADWAY BRIDGE BY AAF
  - ROADWAY IMPROVEMENTS BY AAF
  - SLOPE LIMITS (EXCLUDING DITCHES)
  - RETAINING WALL
  - GOAA CONCEPTUAL PLAN

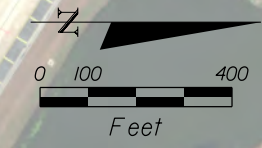
FUTURE COMMUTER RAIL (BY OTHERS)

SOUTH TERMINAL (FUTURE)

NORTH AIRPORT BLVD (FUTURE)

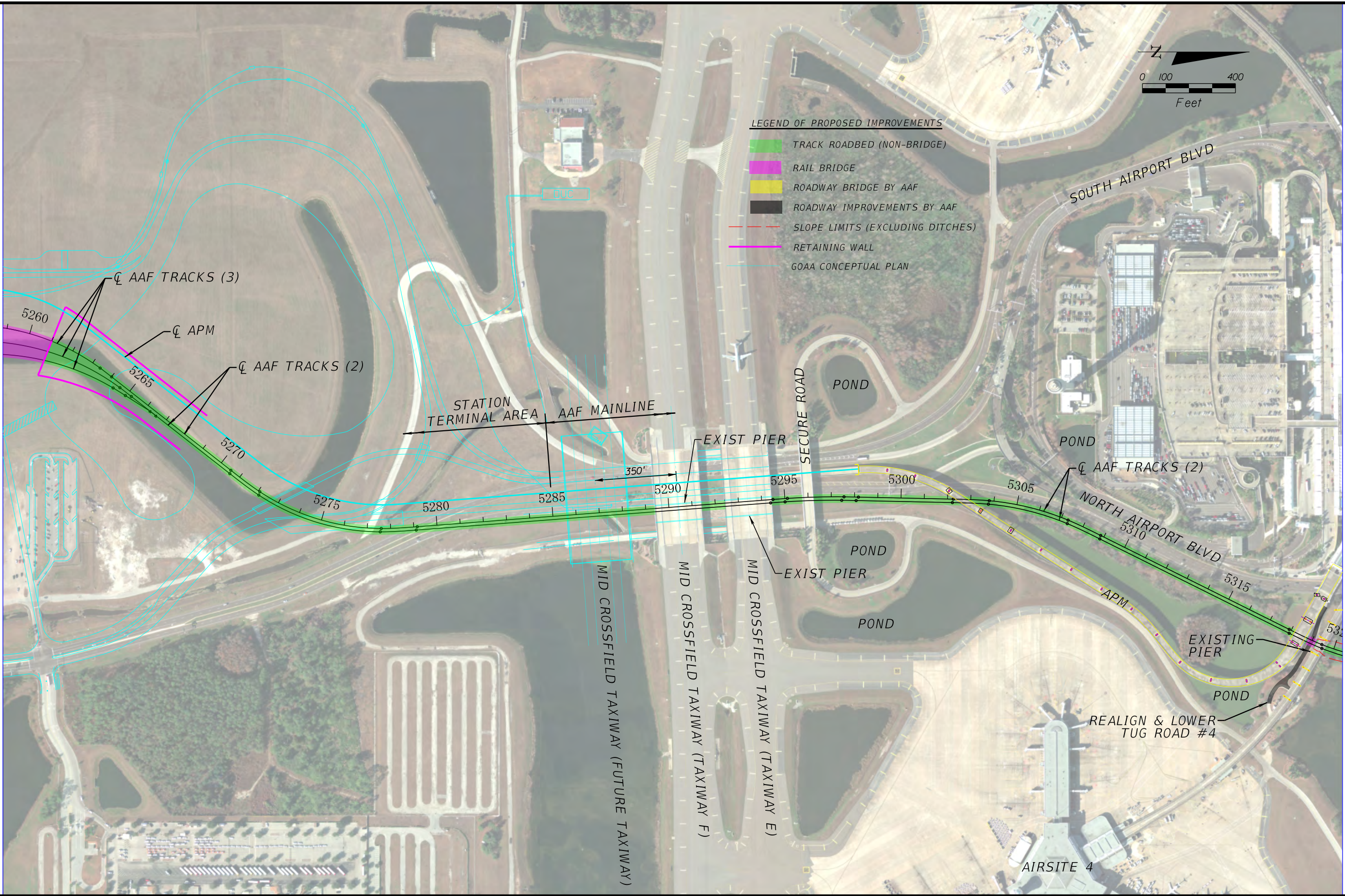
<b>AAF RAILWAY AT GOAA</b>	
<b>ALL ABOARD FLORIDA INTERCITY PASSENGER RAIL PROJECT</b>	
U.S Department of Transportation <b>Federal Railroad Administration</b>	

MATCHLINE PLAN 2



LEGEND OF PROPOSED IMPROVEMENTS

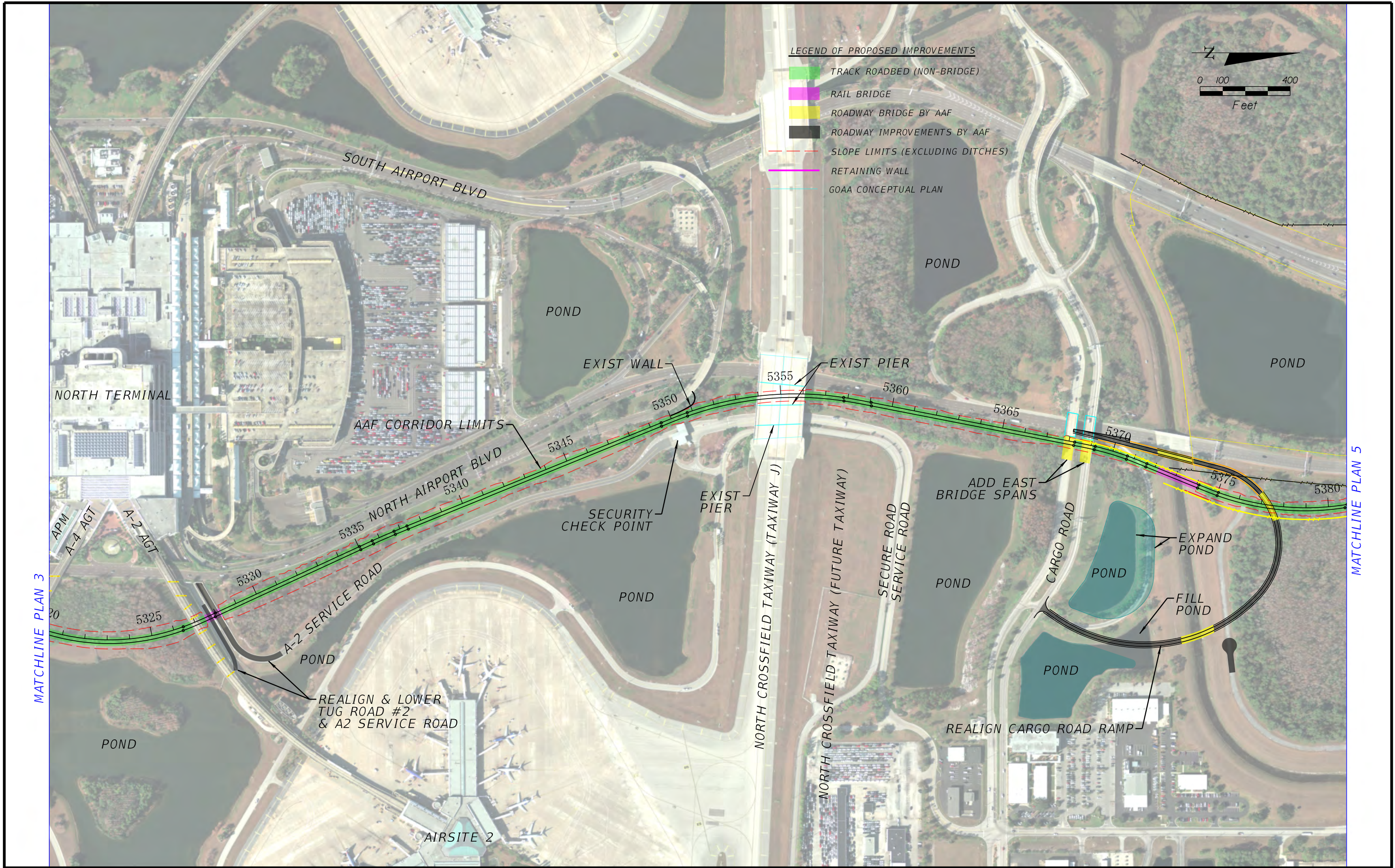
- █ TRACK ROADBED (NON-BRIDGE)
- █ RAIL BRIDGE
- █ ROADWAY BRIDGE BY AAF
- █ ROADWAY IMPROVEMENTS BY AAF
- SLOPE LIMITS (EXCLUDING DITCHES)
- RETAINING WALL
- GOAA CONCEPTUAL PLAN



MATCHLINE PLAN 4

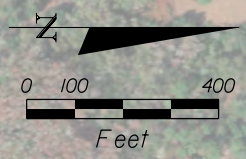
**AAF RAILWAY AT GOAA**  
**ALL ABOARD FLORIDA INTERCITY PASSENGER RAIL PROJECT**





**LEGEND OF PROPOSED IMPROVEMENTS**

- TRACK ROADBED (NON-BRIDGE)
- RAIL BRIDGE
- ROADWAY BRIDGE BY AAF
- ROADWAY IMPROVEMENTS BY AAF
- SLOPE LIMITS (EXCLUDING DITCHES)
- RETAINING WALL
- GOAA CONCEPTUAL PLAN



MATCHLINE PLAN 3

MATCHLINE PLAN 5

**AAF RAILWAY AT GOAA**

**ALL ABOARD FLORIDA INTERCITY PASSENGER RAIL PROJECT**



U.S Department of Transportation  
Federal Railroad Administration

SUSERS

SDATES

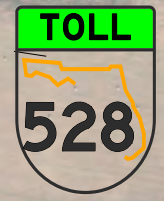
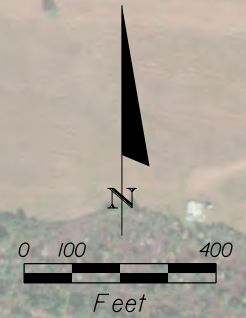
STIMES

SFILES



**LEGEND OF PROPOSED IMPROVEMENTS**

- TRACK ROADBED (NON-BRIDGE)
- RAIL BRIDGE
- ROADWAY BRIDGE BY AAF
- ROADWAY IMPROVEMENTS BY AAF
- SLOPE LIMITS (EXCLUDING DITCHES)
- RETAINING WALL
- GOAA CONCEPTUAL PLAN



MATCHLINE PLAN 4

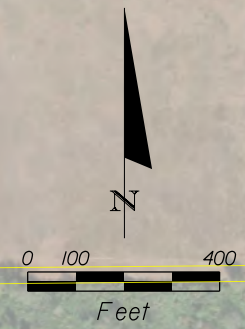
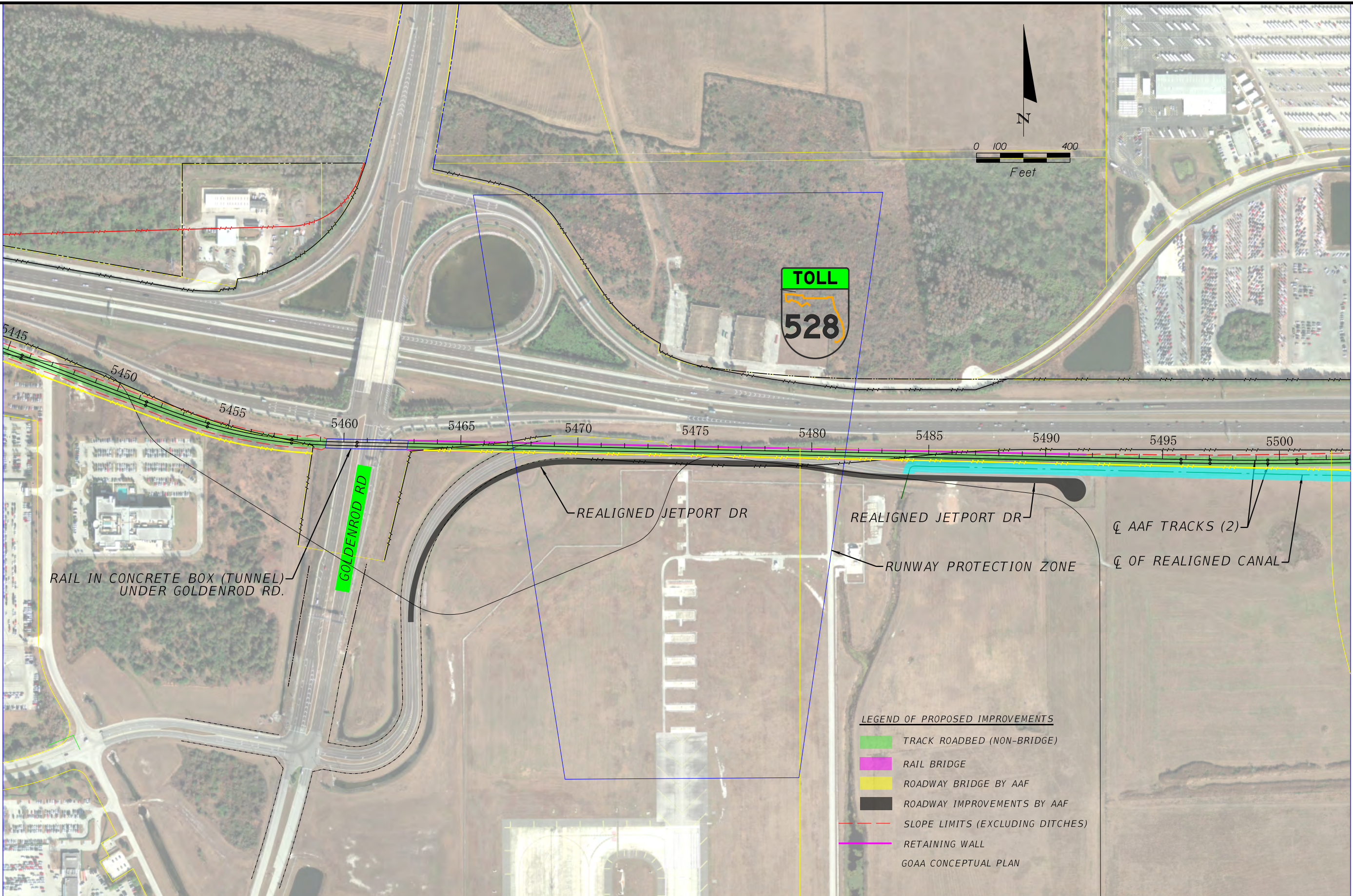
MATCHLINE PLAN 6

<b>AAF RAILWAY AT GOAA</b>		
<b>ALL ABOARD FLORIDA INTERCITY PASSENGER RAIL PROJECT</b>		
	U.S. Department of Transportation <b>Federal Railroad Administration</b>	



MATCHLINE PLAN 5

MATCHLINE PLAN 7



RAIL IN CONCRETE BOX (TUNNEL)  
UNDER GOLDENROD RD.

GOLDENROD RD

REALIGNED JETPORT DR

REALIGNED JETPORT DR

RUNWAY PROTECTION ZONE

AAF TRACKS (2)

OF REALIGNED CANAL

LEGEND OF PROPOSED IMPROVEMENTS

- TRACK ROADBED (NON-BRIDGE)
- RAIL BRIDGE
- ROADWAY BRIDGE BY AAF
- ROADWAY IMPROVEMENTS BY AAF
- SLOPE LIMITS (EXCLUDING DITCHES)
- RETAINING WALL
- GOAA CONCEPTUAL PLAN

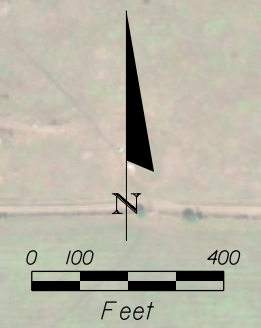
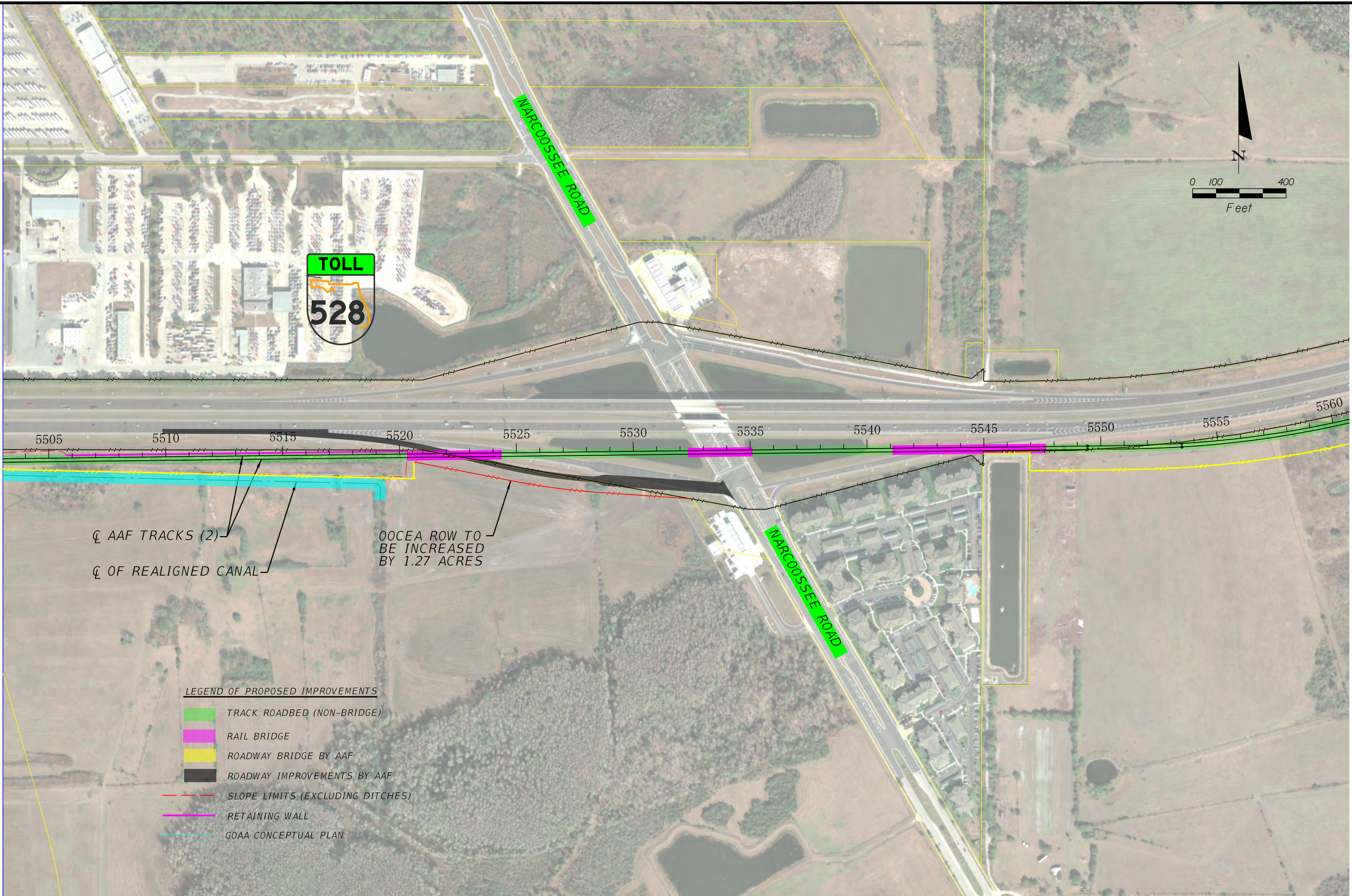
AAF RAILWAY AT GOAA

ALL ABOARD FLORIDA INTERCITY PASSENGER RAIL PROJECT



U.S. Department of Transportation  
Federal Railroad Administration

MATCHLINE PLAN 6



☐ AAF TRACKS (2)  
 ☐ OF REALIGNED CANAL  
 OOCEA ROW TO BE INCREASED BY 1.27 ACRES

- LEGEND OF PROPOSED IMPROVEMENTS**
- TRACK ROADBED (NON-BRIDGE)
  - RAIL BRIDGE
  - ROADWAY BRIDGE BY AAF
  - ROADWAY IMPROVEMENTS BY AAF
  - SLOPE LIMITS (EXCLUDING DITCHES)
  - RETAINING WALL
  - GOAA CONCEPTUAL PLAN

**AAF RAILWAY AT GOAA**  
**ALL ABOARD FLORIDA INTERCITY PASSENGER RAIL PROJECT**

