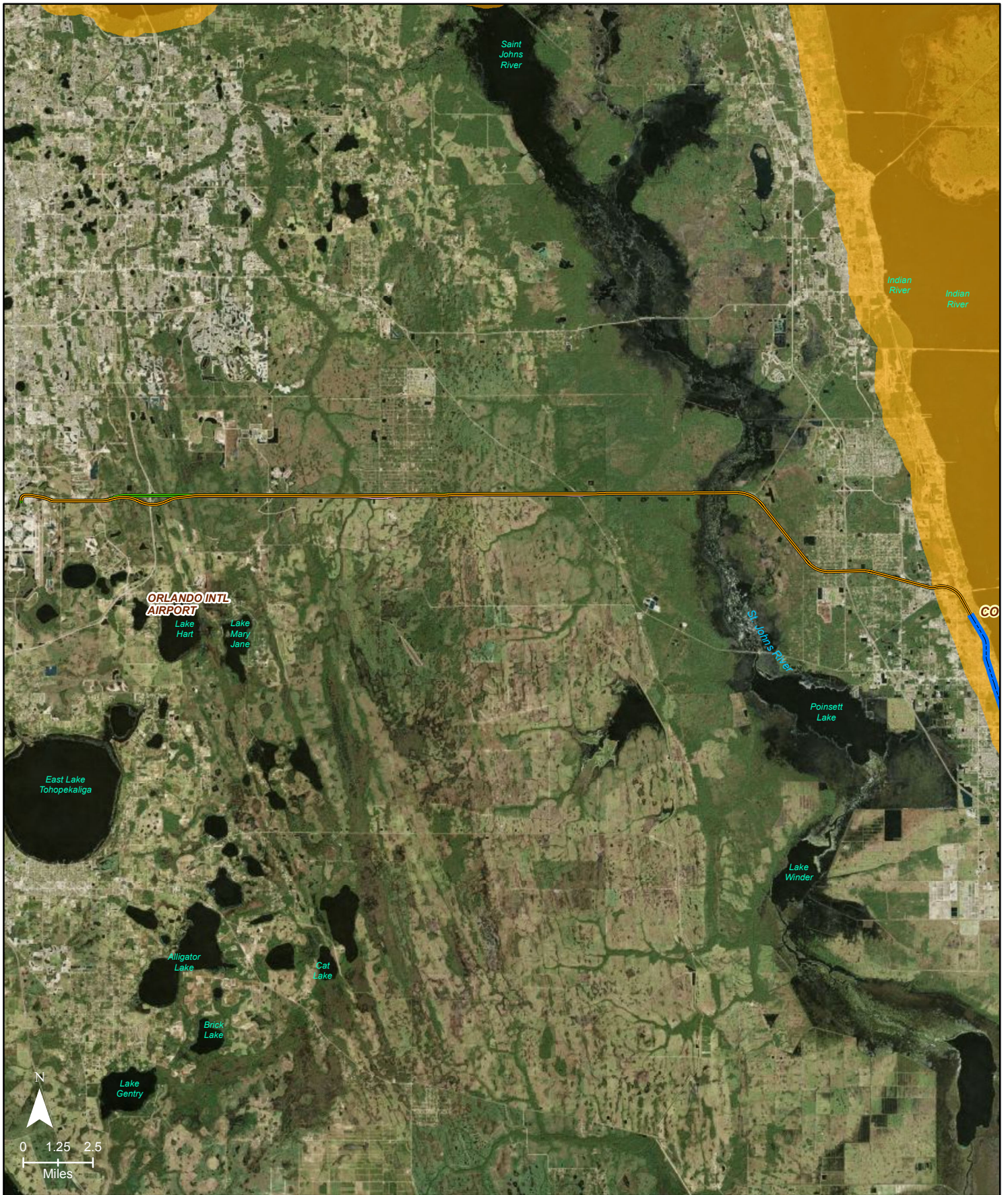


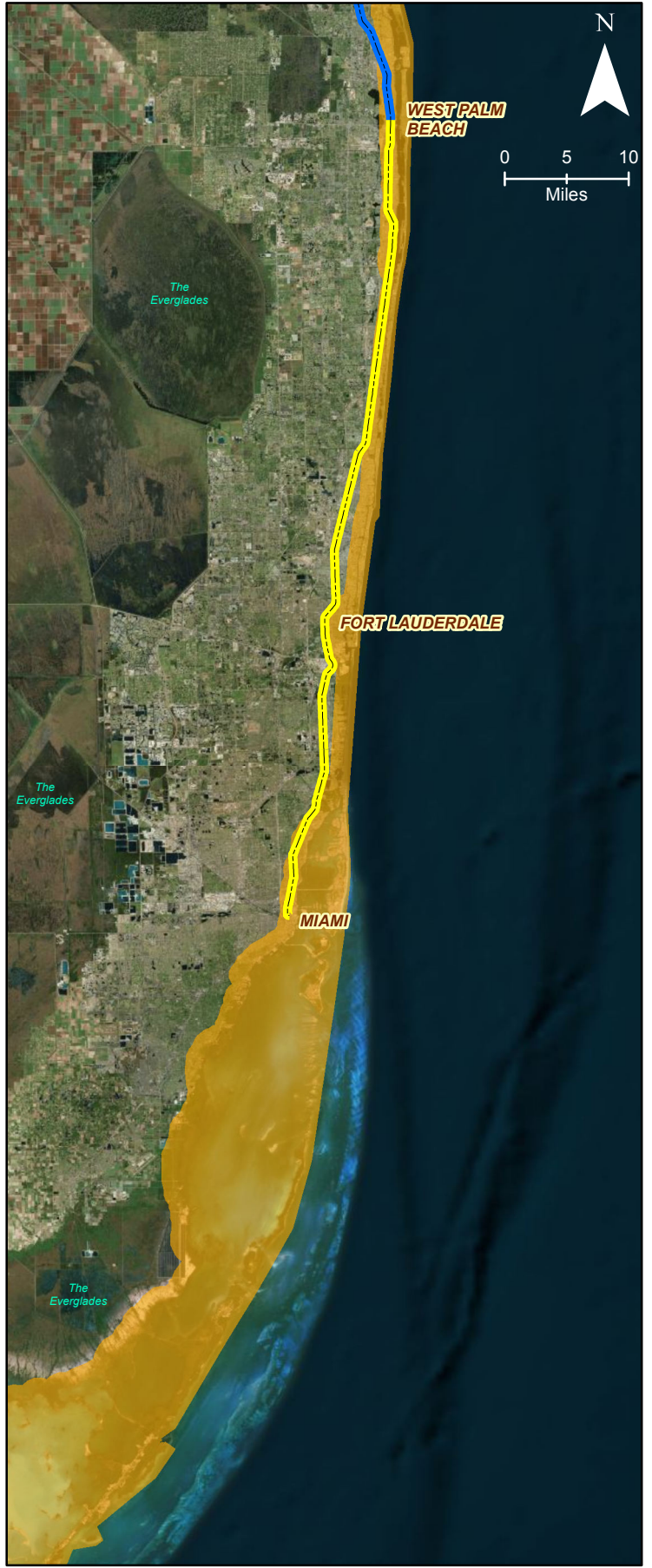
## **Appendix 4.3.6-B**

# **Rare Species Consultation Areas Maps**



- Alternative C-East/West Study Area Line
- Alternative A-East/West Study Area Line
- Alternative E-East/West Study Area Line
- North-South Corridor Extension (WPB-Cocoa) 128.5 Miles
- WEST INDIAN MANATEE CONSULTATION AREA

<b>East/West West Indian Manatee Consultation Area Map</b>	
<b>All Aboard Florida Intercity Passenger Rail Project</b>	

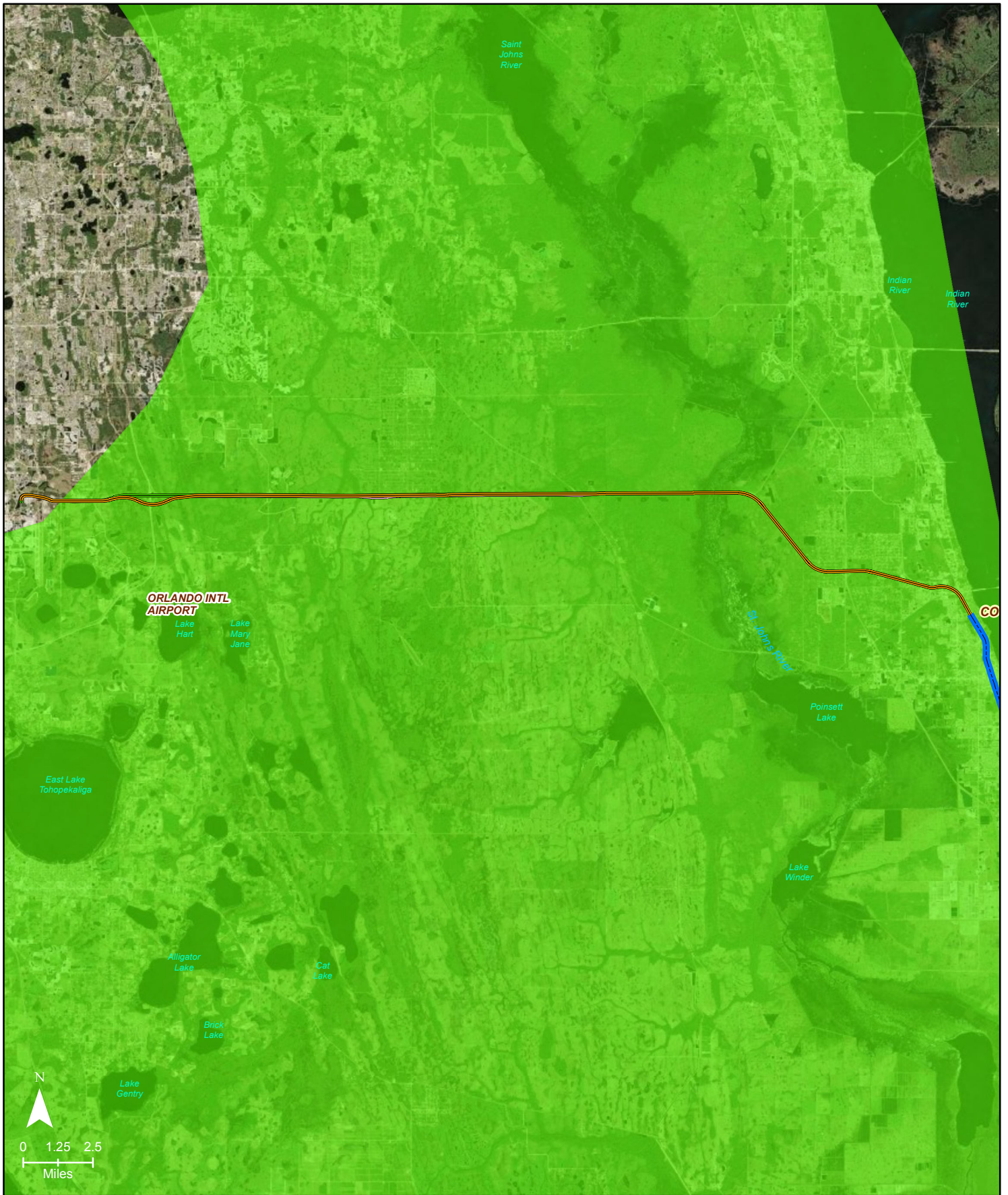


- East-West Corridor Extension (Cocoa-Orlando) 40 Miles
- - - North-South Corridor Extension (WPB-Cocoa) 128.5 Miles
- - - MIA-WPB 66.5 Miles (FONSI 1/30/13)
- WEST INDIAN MANATEE CONSULTATION AREA

**North/South West Indian Manatee Consultation Area Map**

**All Aboard Florida Intercity Passenger Rail Project**

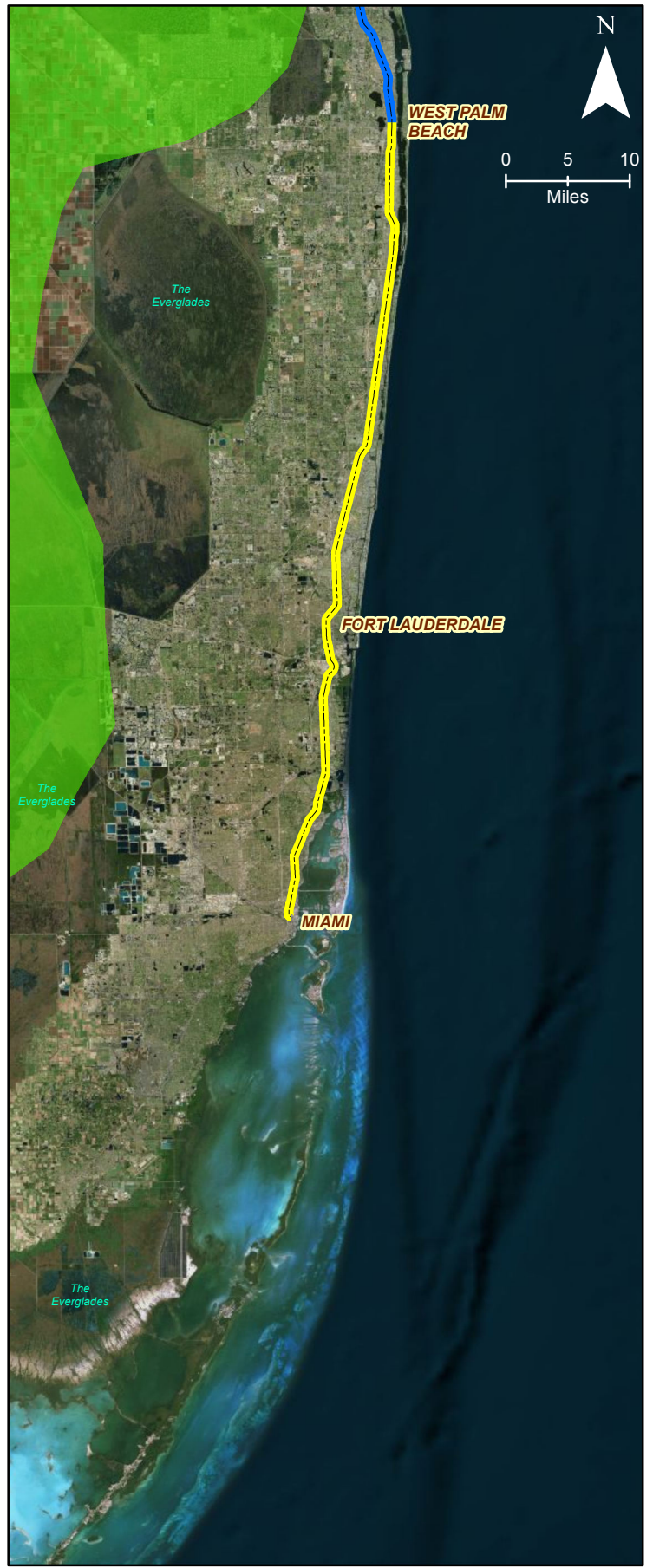
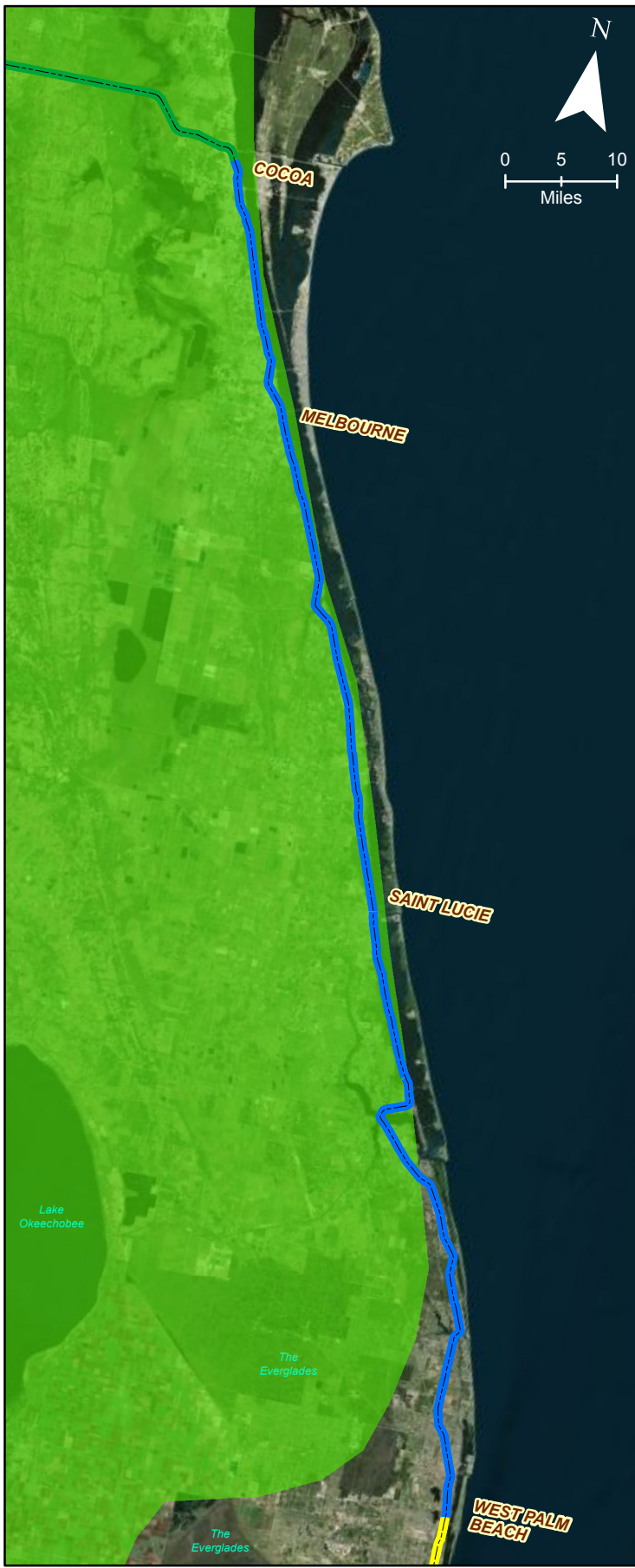




**Explanation of Features**

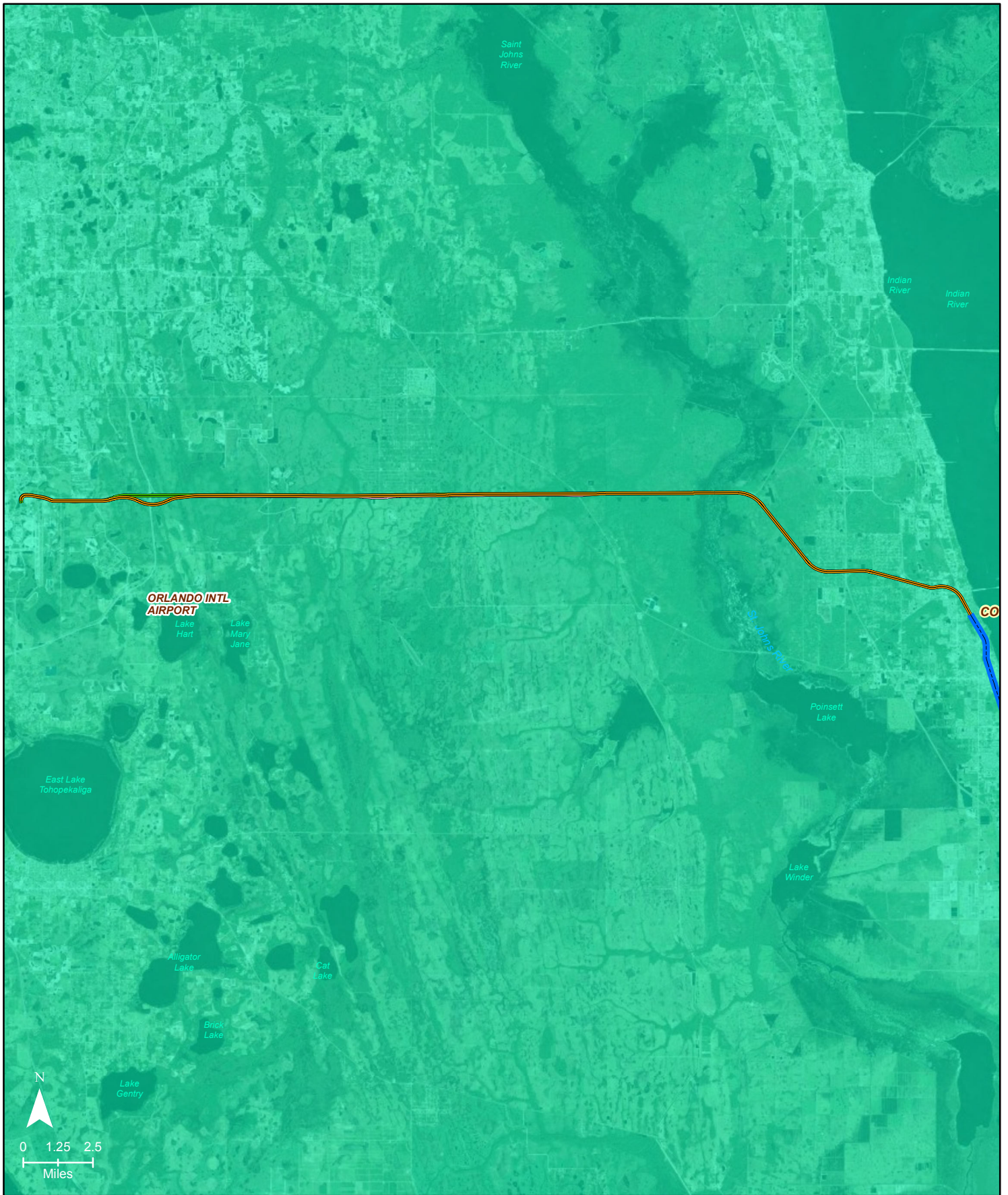
- Alternative C-East/West Study Area Line
- Alternative A-East/West Study Area Line
- Alternative E-East/West Study Area Line
- North-South Corridor Extension (WPB-Cocoa) 128.5 Miles
- CRESTED CARACARA CONSULTATION AREA

<b>East/West Crested Caracara Consultation Area Map</b>	
<b>All Aboard Florida Intercity Passenger Rail Project</b>	



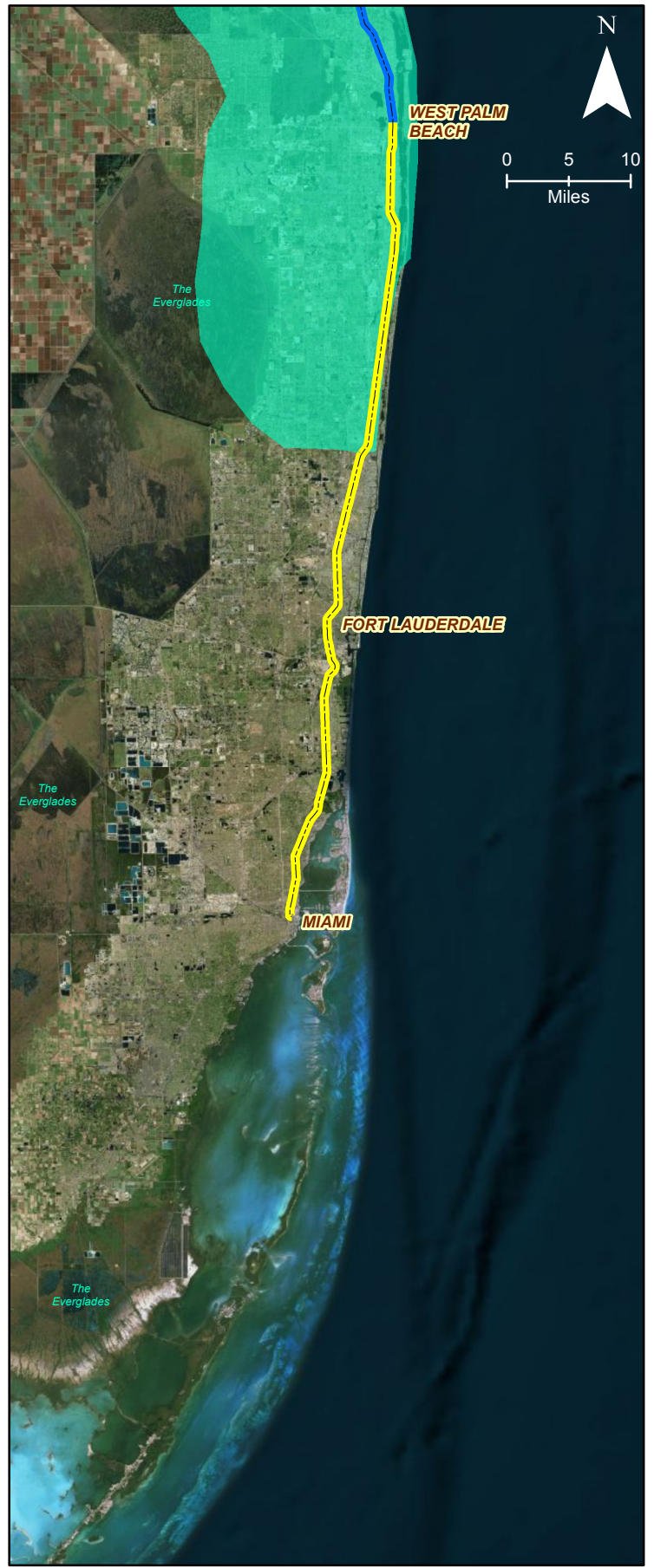
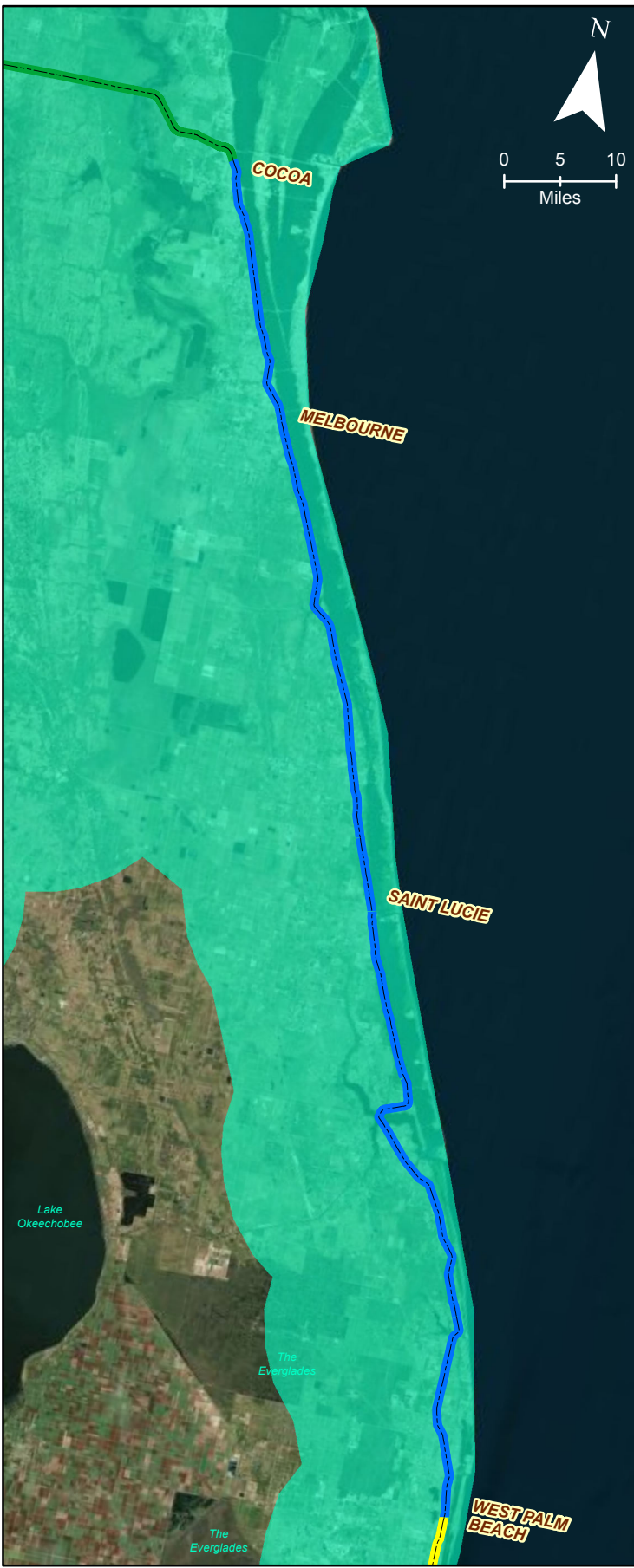
- East-West Corridor Extension (Cocoa-Orlando) 40 Miles
- - - North-South Corridor Extension (WPB-Cocoa) 128.5 Miles
- - - MIA-WPB 66.5 Miles (FONSI 1/30/13)
- CRESTED CARACARA CONSULTATION AREA

<b>North/South Crested Caracara Consultation Area Map</b>	
<b>All Aboard Florida Intercity Passenger Rail Project</b>	



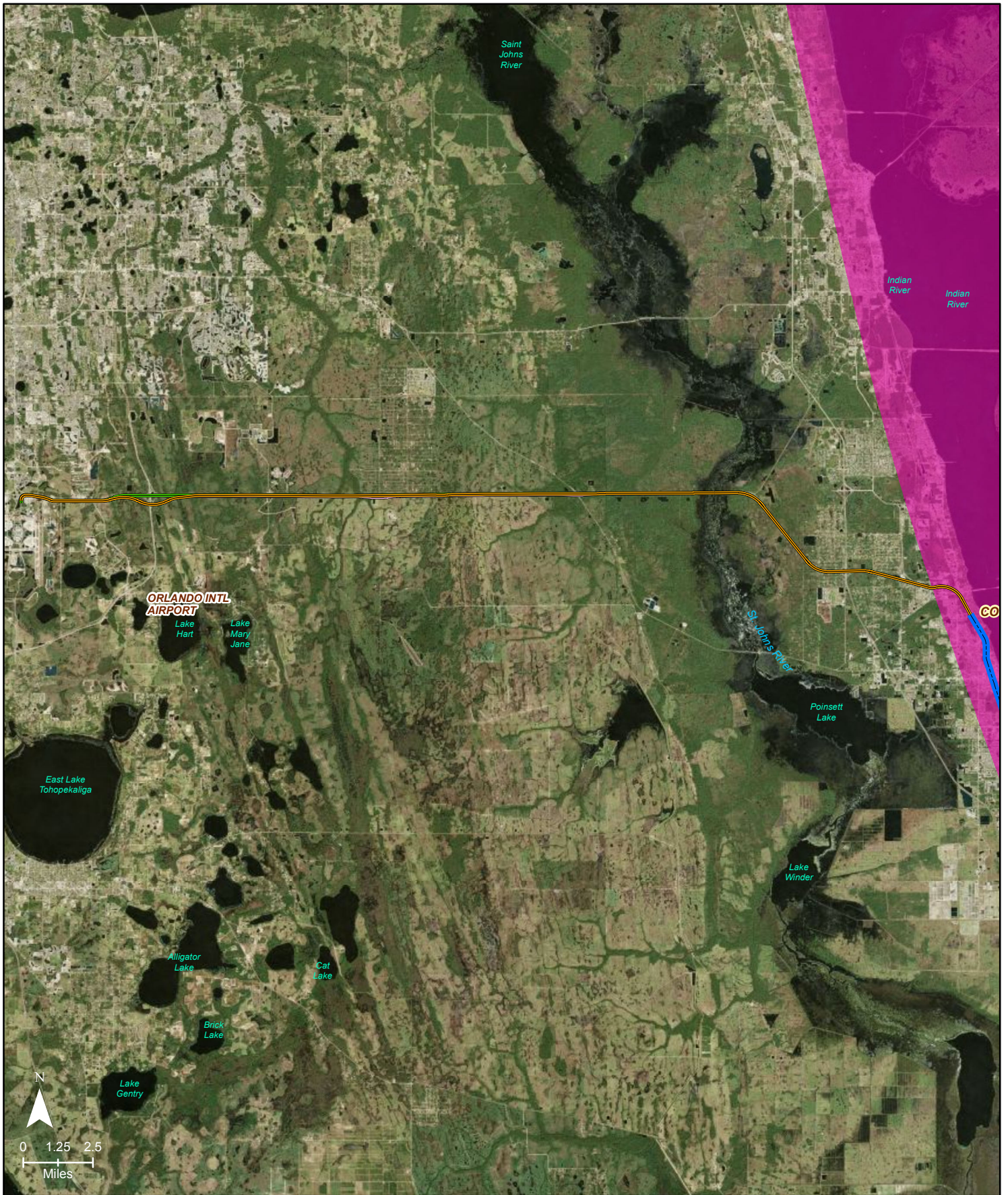
- Alternative C-East/West Study Area Line
- Alternative A-East/West Study Area Line
- Alternative E-East/West Study Area Line
- North-South Corridor Extension (WPB-Cocoa) 128.5 Miles
- SCRUB-JAY CONSULTATION AREA






<b>East/West Florida Scrub-Jay Consultation Area Map</b>	
<b>All Aboard Florida Intercity Passenger Rail Project</b>	

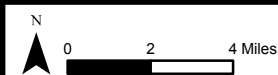



- East-West Corridor Extension (Cocoa-Orlando) 40 Miles
- - - North-South Corridor Extension (WPB-Cocoa) 128.5 Miles
- - - MIA-WPB 66.5 Miles (FONSI 1/30/13)
- SCRUB-JAY CONSULTATION AREA

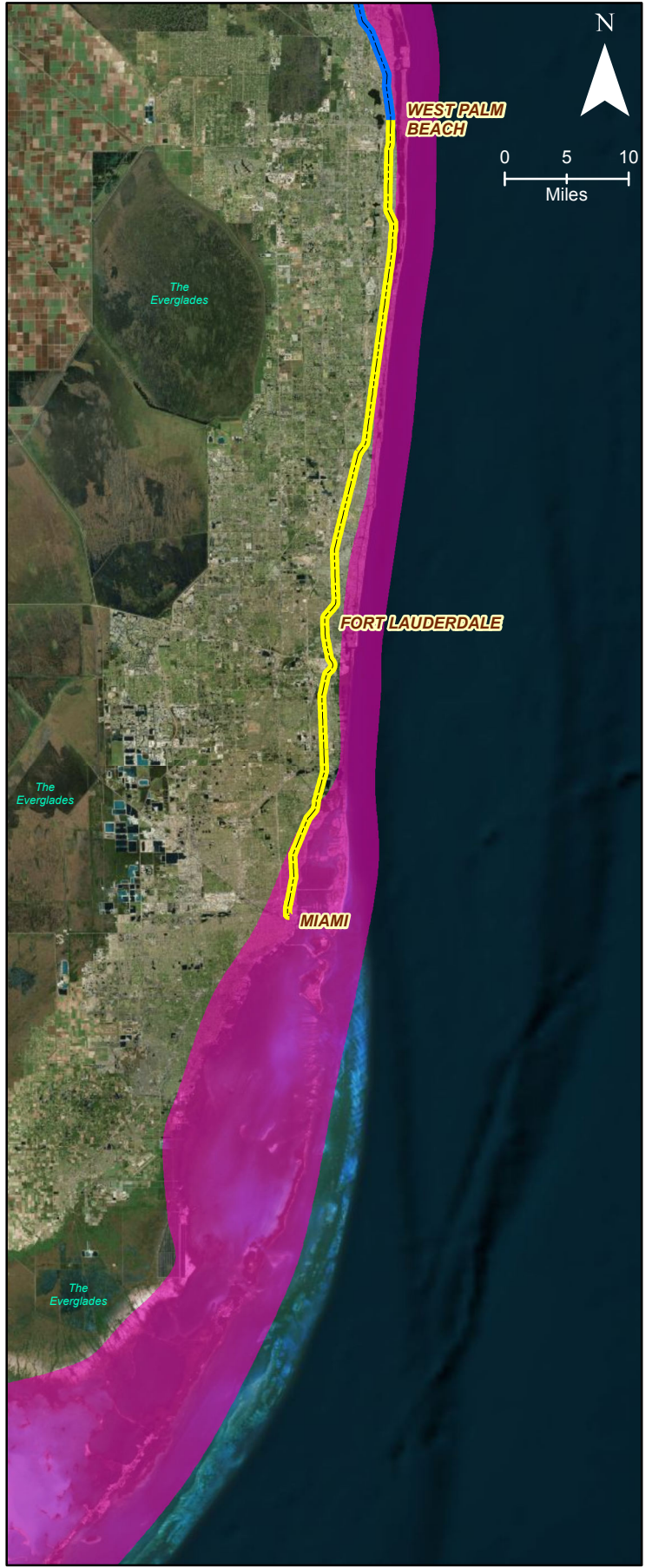
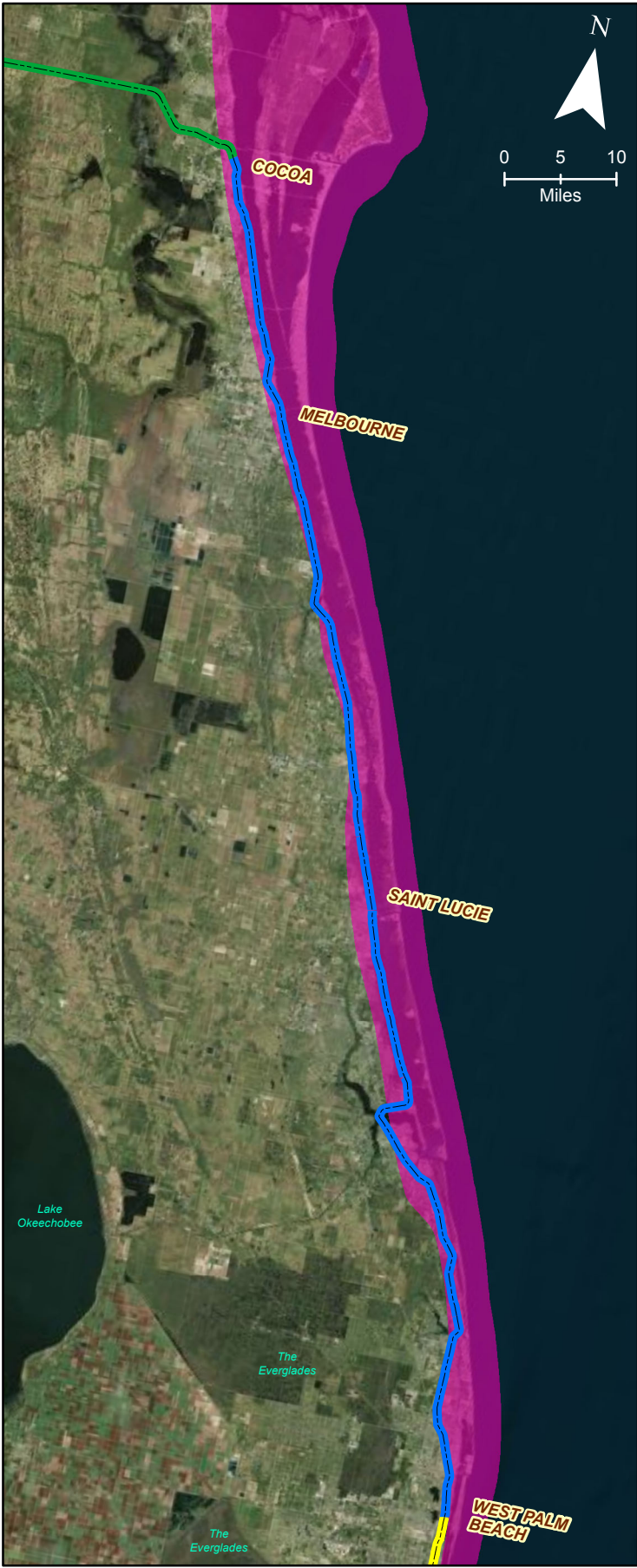
<b>North/South Florida Scrub-Jay Consultation Area Map</b>	
<b>All Aboard Florida Intercity Passenger Rail Project</b>	



-  Alternative C-East/West Study Area Line
-  Alternative A-East/West Study Area Line
-  Alternative E-East/West Study Area Line
-  North-South Corridor Extension (WPB-Cocoa) 128.5 Miles
-  PIPING PLOVER CONSULTATION AREA

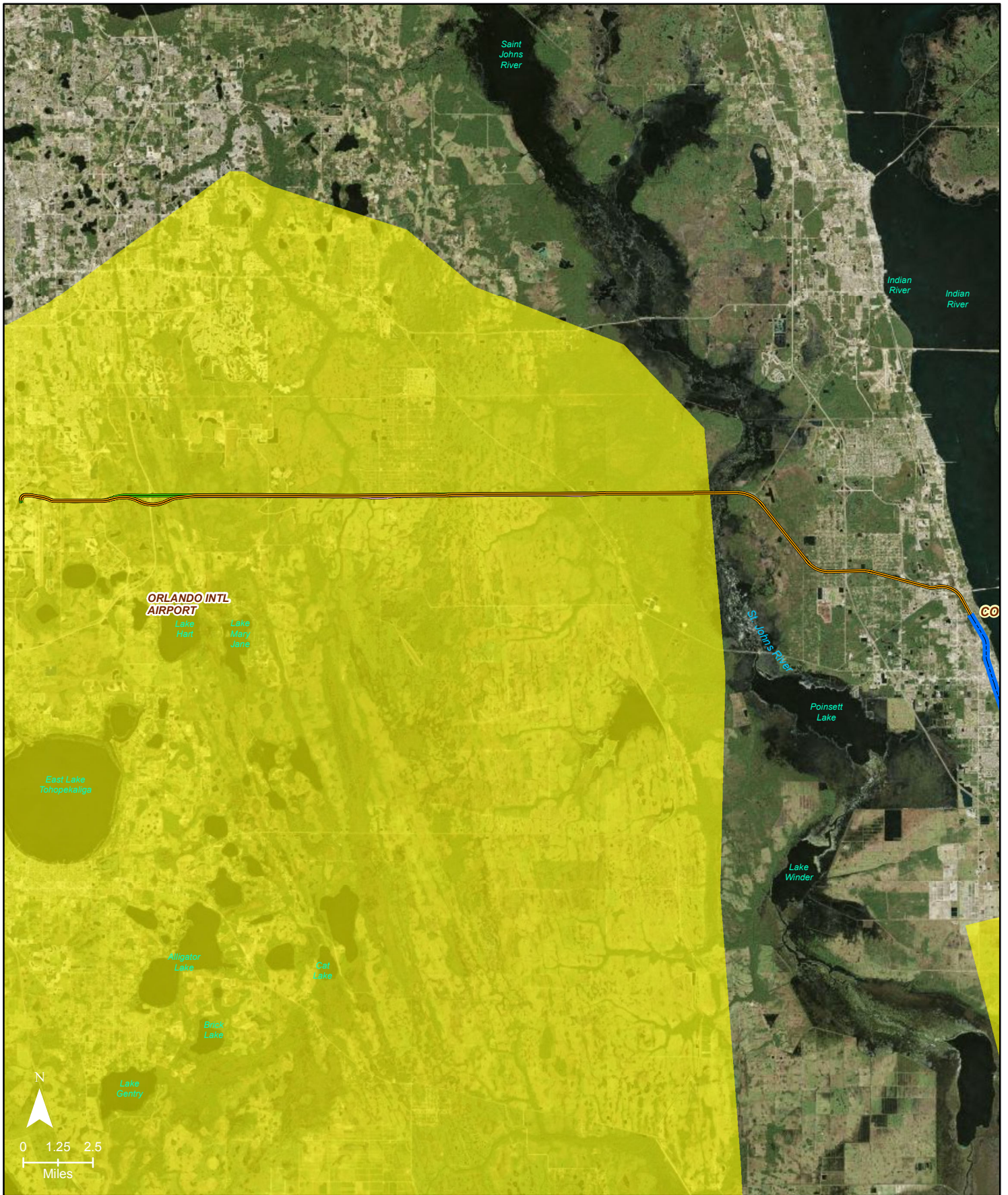
<b>East/West Piping Plover Consultation Area Map</b>	
<b>All Aboard Florida Intercity Passenger Rail Project</b>	
	





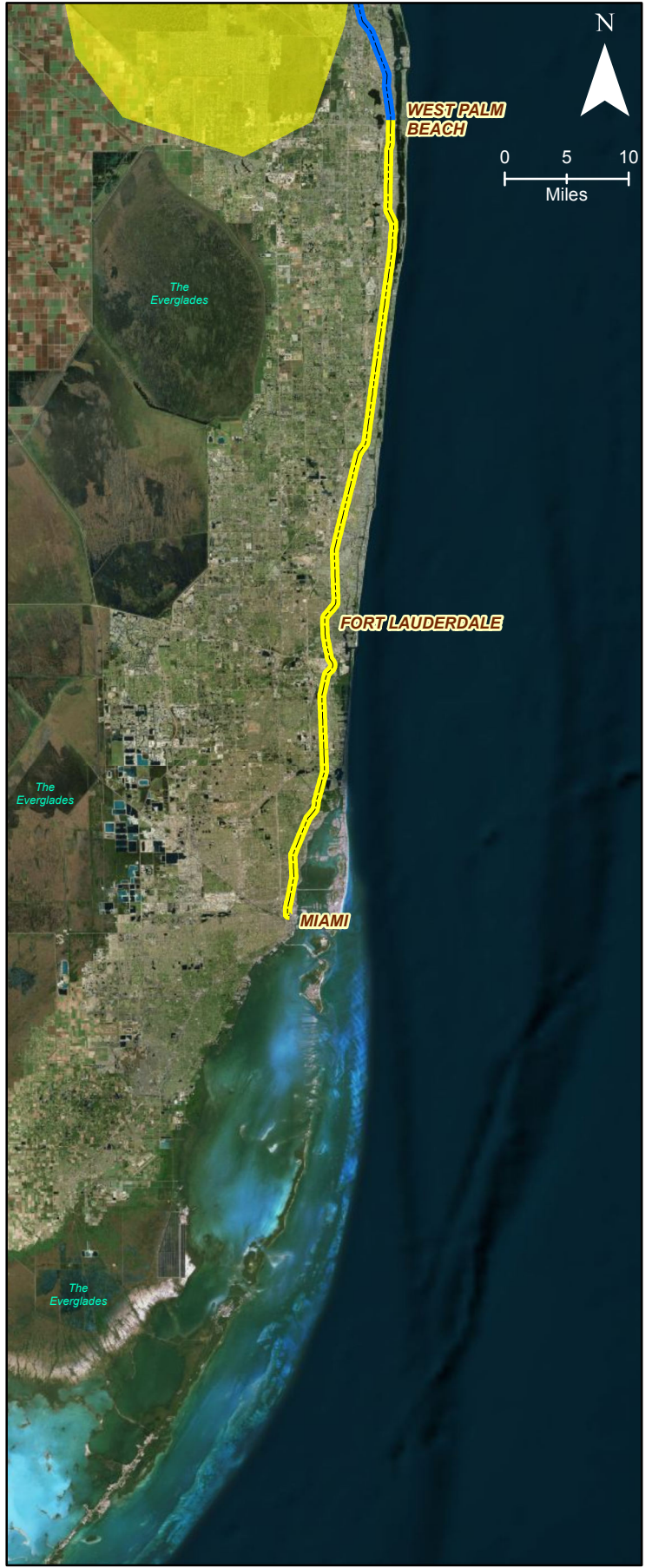
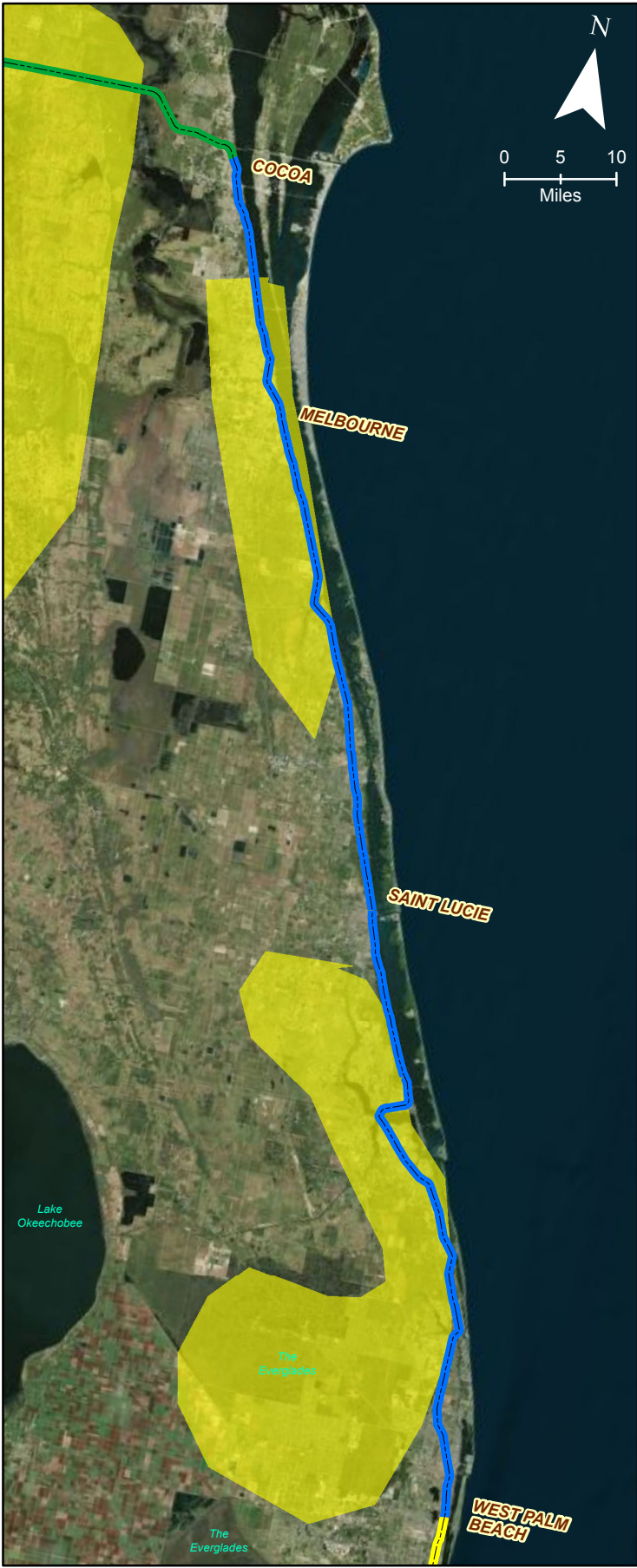
- East-West Corridor Extension (Cocoa-Orlando) 40 Miles
- - - North-South Corridor Extension (WPB-Cocoa) 128.5 Miles
- - - MIA-WPB 66.5 Miles (FONSI 1/30/13)
- PIPING PLOVER CONSULTATION AREA

<b>North/South Piping Plover Consultation Area Map</b>	
<b>All Aboard Florida Intercity Passenger Rail Project</b>	



- Alternative C-East/West Study Area Line
- Alternative A-East/West Study Area Line
- Alternative E-East/West Study Area Line
- North-South Corridor Extension (WPB-Cocoa) 128.5 Miles
- RED COCKADED WOODPECKER CONSULTATION AREA

<b>East/West Red Cockaded Woodpecker Consultation Area Map</b>	
<b>All Aboard Florida Intercity Passenger Rail Project</b>	

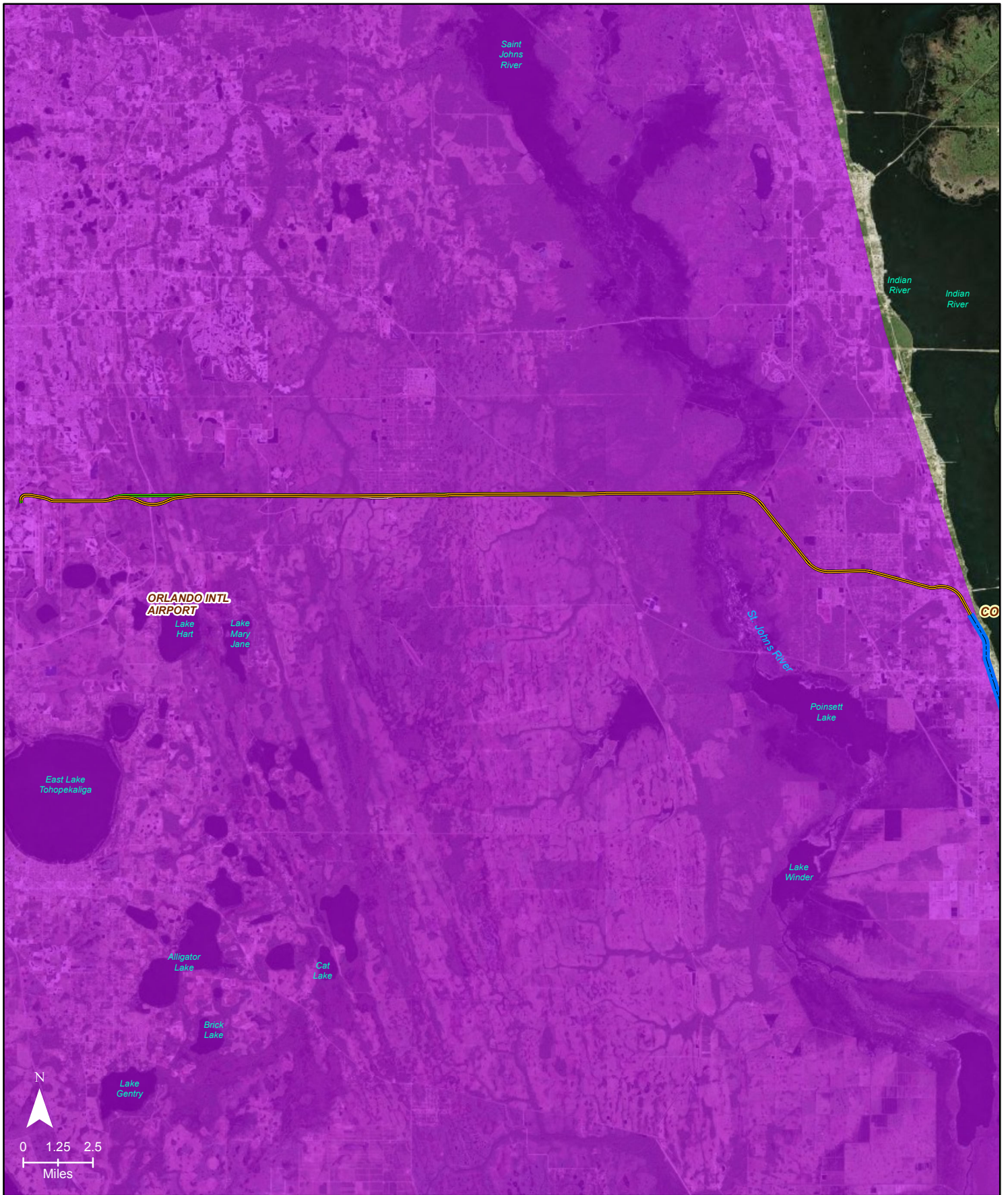


- East-West Corridor Extension (Cocoa-Orlando) 40 Miles
- North-South Corridor Extension (WPB-Cocoa) 128.5 Miles
- MIA-WPB 66.5 Miles (FONSI 1/30/13)
- RED COCKADED WOODPECKER CONSULTATION AREA

**North/South Red Cockaded Woodpecker Consultation Area Map**

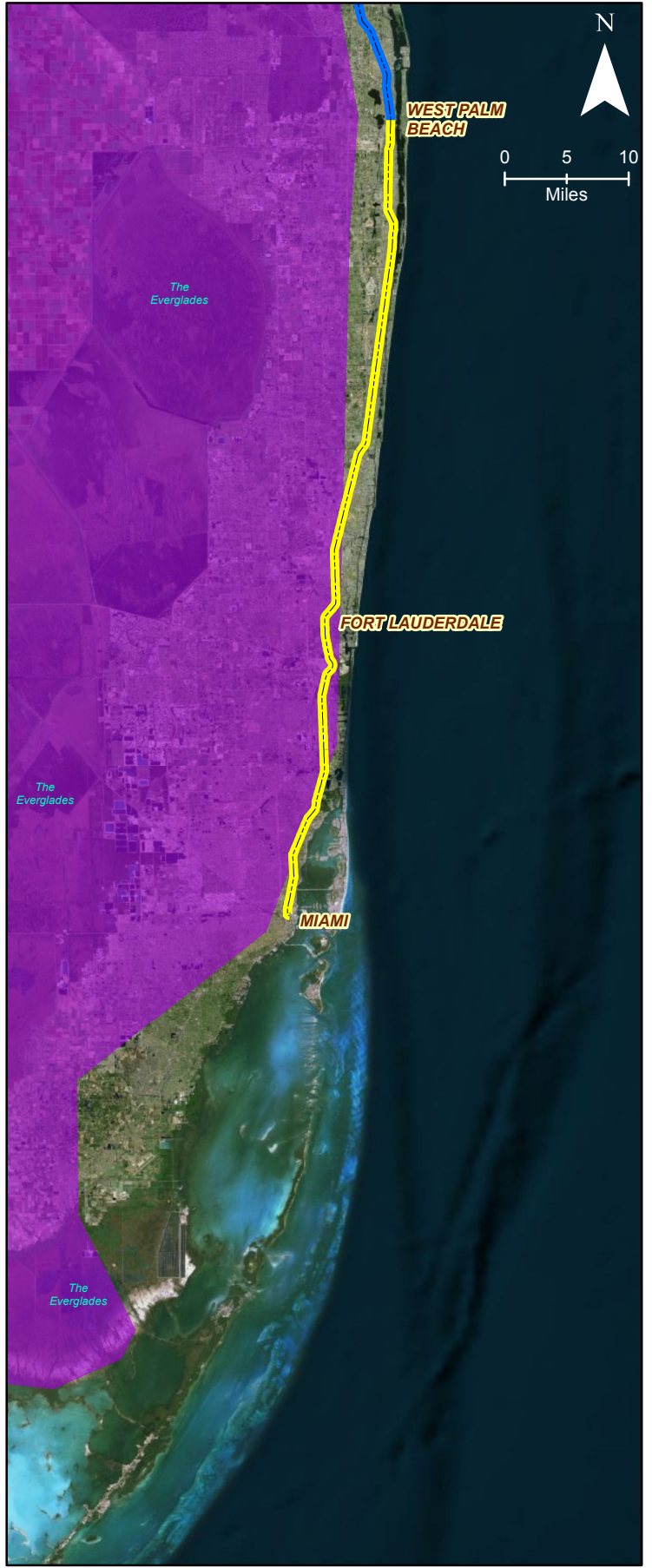
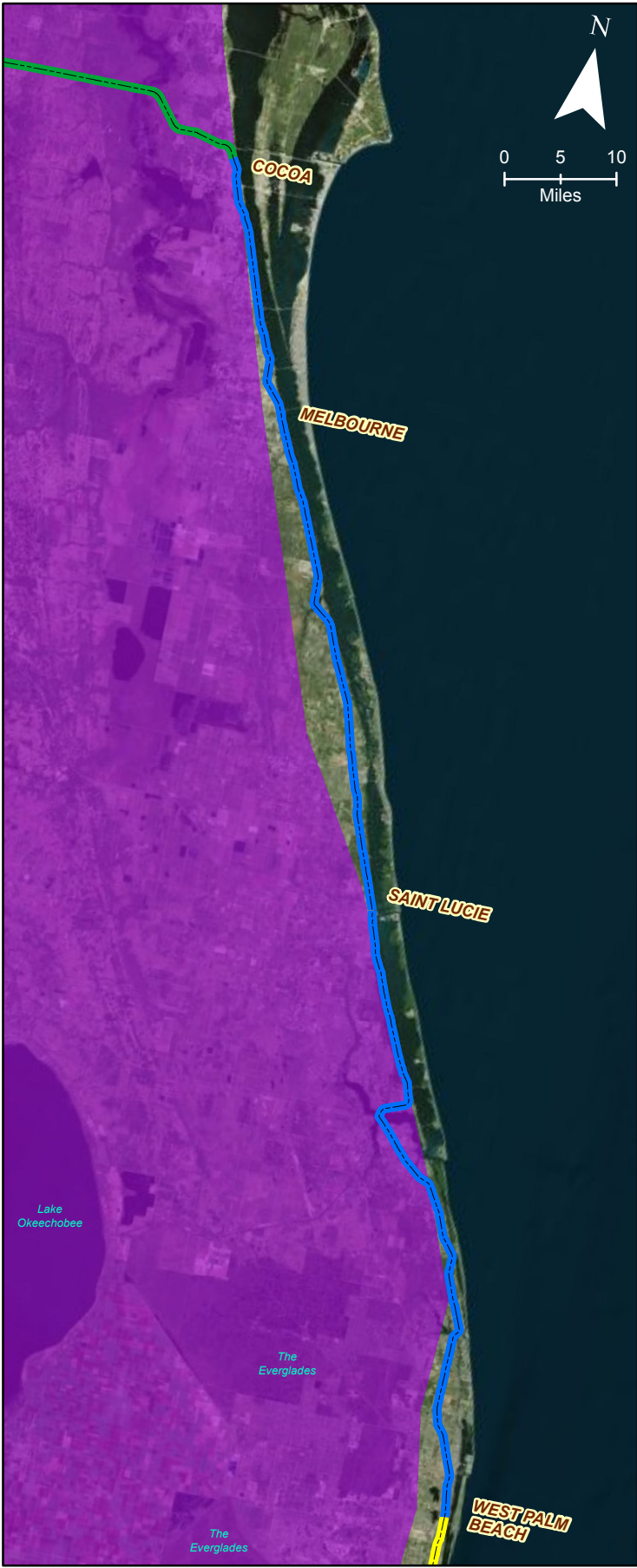
**All Aboard Florida Intercity Passenger Rail Project**

--	--	--



- Alternative C-East/West Study Area Line
- Alternative A-East/West Study Area Line
- Alternative E-East/West Study Area Line
- North-South Corridor Extension (WPB-Cocoa) 128.5 Miles
- SNAIL KITE CONSULTATION AREA

<b>East/West Snail Kite Consultation Area Map</b>	
<b>All Aboard Florida Intercity Passenger Rail Project</b>	

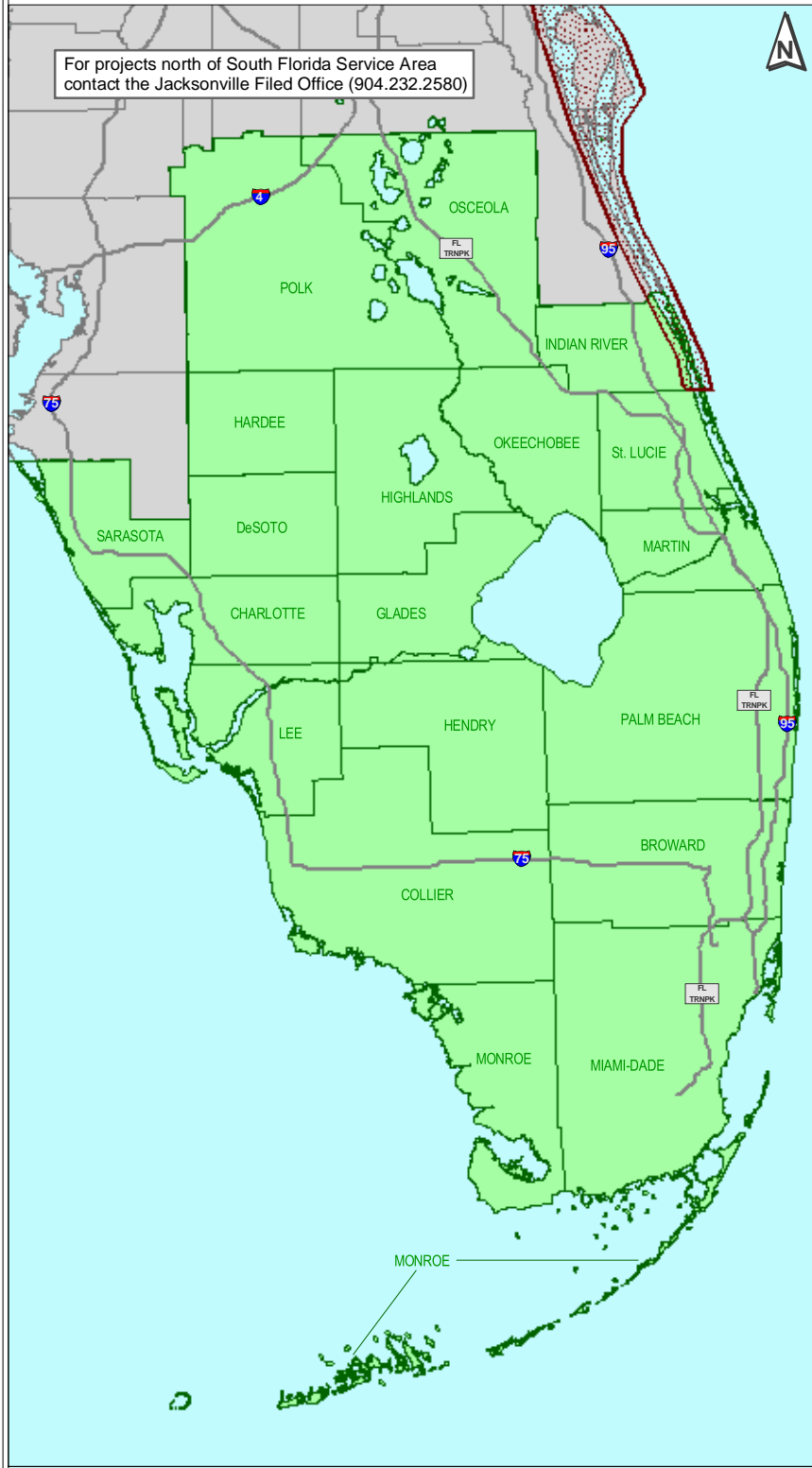


- East-West Corridor Extension (Cocoa-Orlando) 40 Miles
- - - North-South Corridor Extension (WPB-Cocoa) 128.5 Miles
- - - MIA-WPB 66.5 Miles (FONSI 1/30/13)
- SNAIL KITE CONSULTATION AREA

<b>North/South Snail Kite Consultation Area Map</b>	
<b>All Aboard Florida Intercity Passenger Rail Project</b>	
<small>Path: F:\FEC\FECL_GDB\MXD\EAINS Snail Kite Consultation Areas.mxd</small>	


# Atlantic Salt Marsh Snake

For projects north of South Florida Service Area contact the Jacksonville Filed Office (904.232.2580)



## Consultation Area Map

September 29, 2003

-  Atlantic Salt Marsh Snake Consultation Area
-  South Florida Service Area



Produced by:  
South Florida Ecological Services Office  
<http://verobeach.fws.gov>  
Phone: 772.562.3909

Disclaimer:  
The information on this map has been compiled from a variety of sources and is intended for illustration purposes only.

