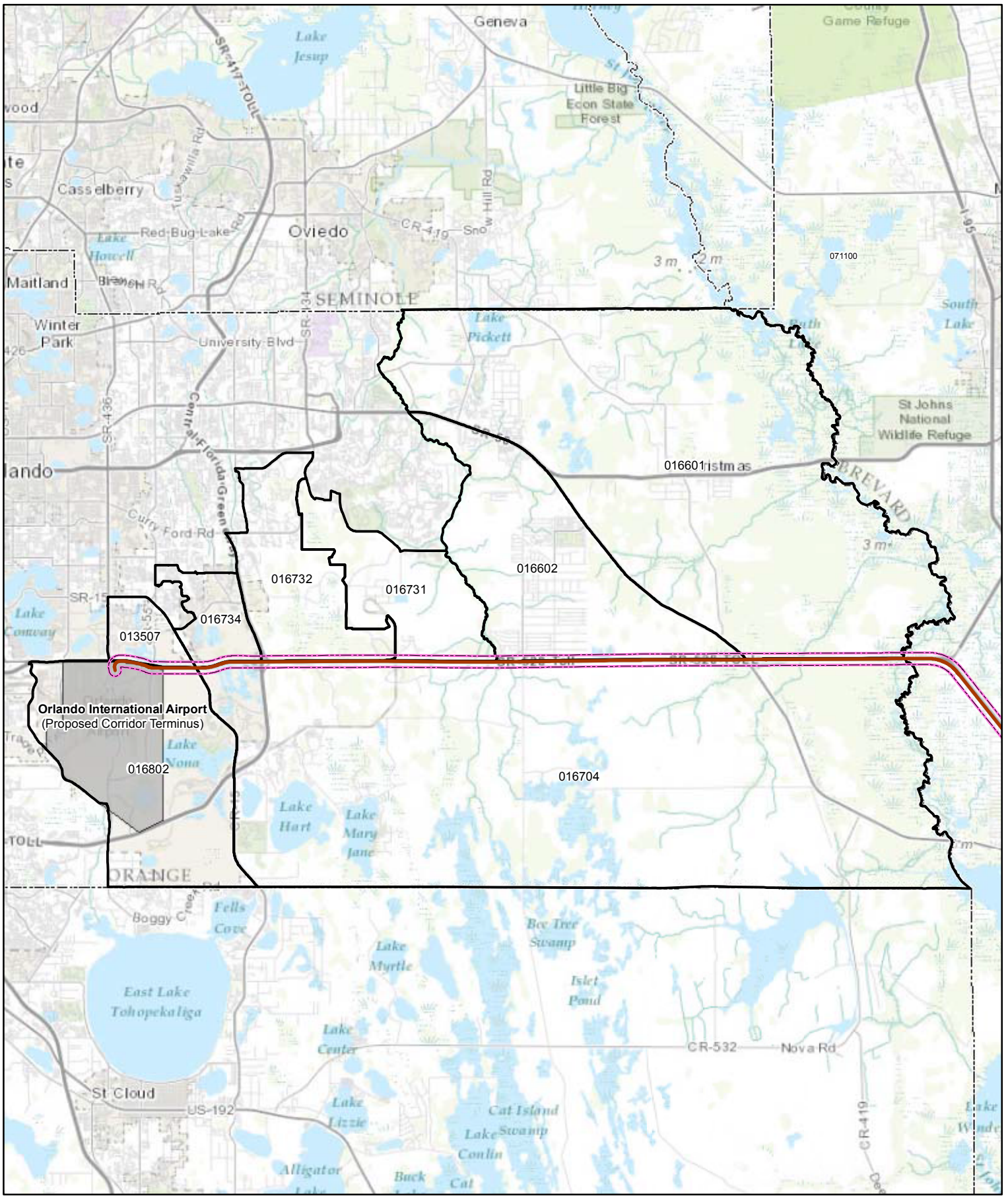


# **Appendix 4.4.2-A**

## **Minority Populations Maps**



**Explanation of Features**

- AAF Railway Line
- 1000' Buffer
- County Boundary
- Census Tract
- Census Tract, Minority > 37.4%
- Census Tract, Minority > 50%
- Orlando International Airport

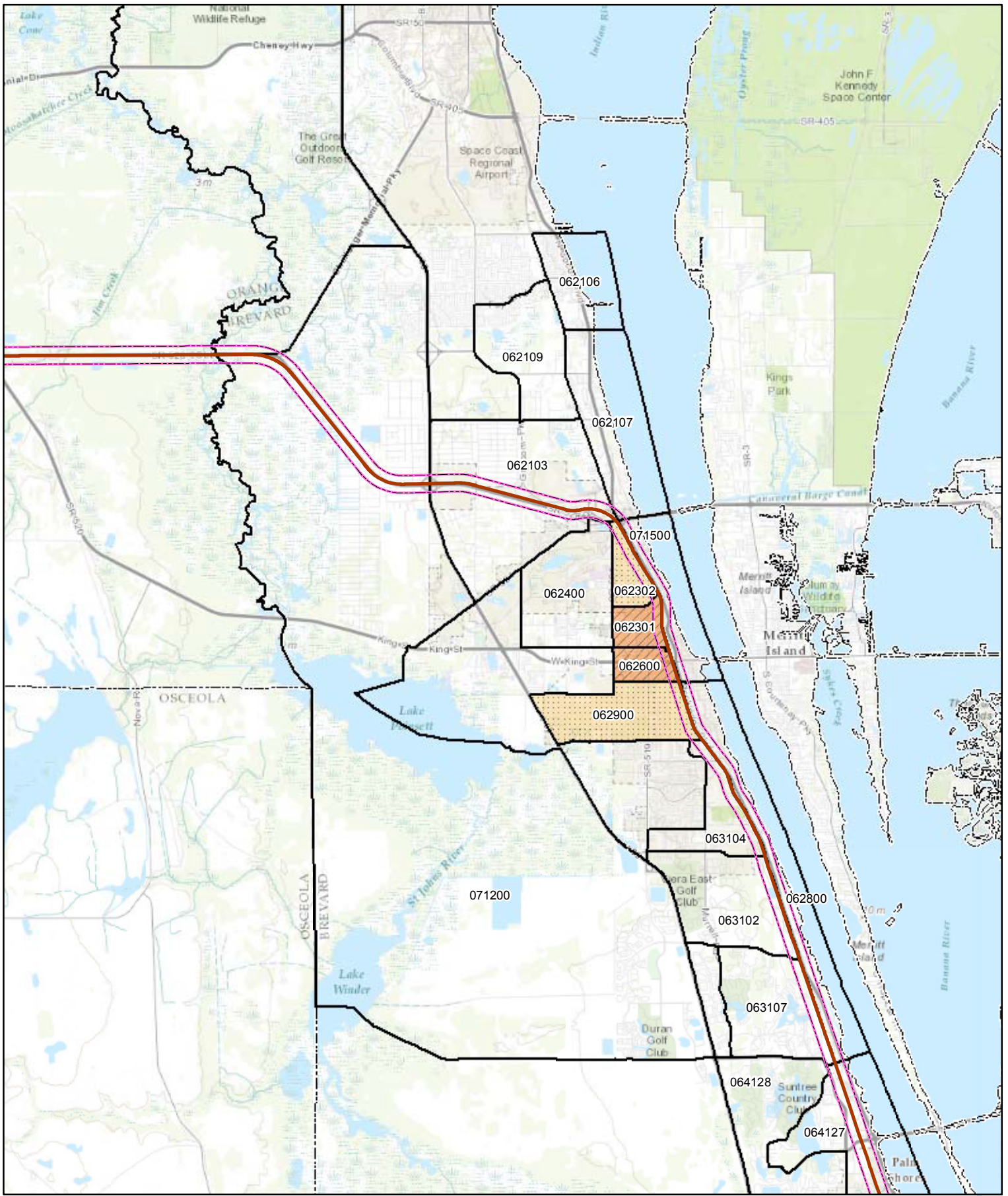
Data Sources: ESRI 2012, US Census 2010

<b>Orange County Minority Population Concentrations</b>	
<b>AAF - Passenger Rail Corridor Evaluation</b>	
<b>Figure 4.4.2-A1</b>	

Path: X:\Projects\2013 Projects\606312012 AAF\MXD\census\_brevard.mxd

Project # 6063-12-0212





**Explanation of Features**

- AAF Railway Line
- 1000' Buffer
- County Boundary
- Census Tract
- Census Tract, Minority > 37.4%
- Census Tract, Minority > 50%

Data Sources: ESRI 2012  
US Census 2010

**Brevard County Minority Population Concentrations**

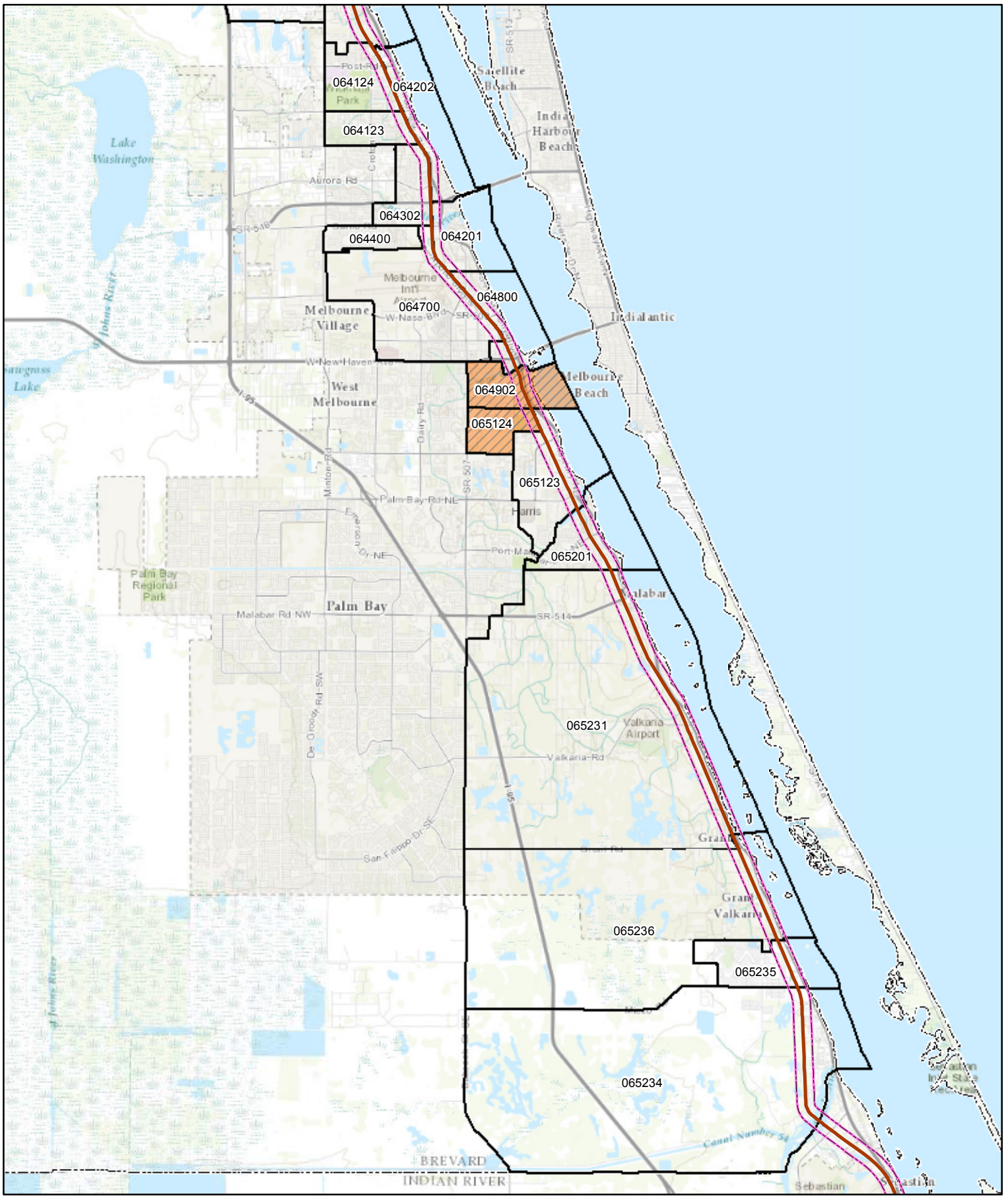
**AAF - Passenger Rail Corridor Evaluation**



U.S. Department of Transportation  
**Federal Railroad Administration**

**Figure**  
4.4.2-A2





**Explanation of Features**

- AAF Railway Line
- 1000' Buffer
- County Boundary
- Census Tract
- Census Tract, Minority > 37.4%
- Census Tract, Minority > 50%

Data Sources: ESRI 2012  
US Census 2010

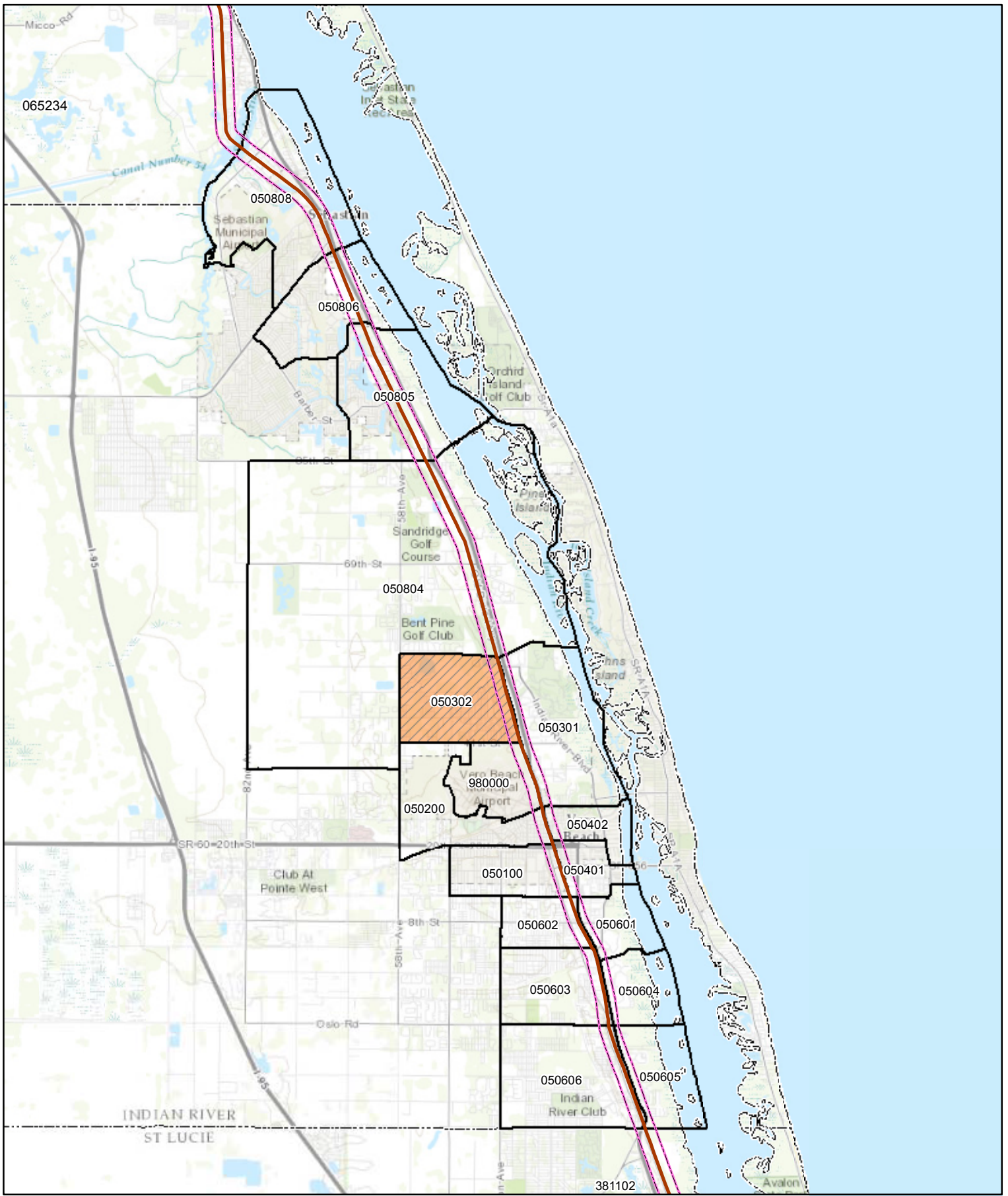
**Brevard County Minority Population Concentrations**

**AAF - Passenger Rail Corridor Evaluation**



U.S. Department of Transportation  
**Federal Railroad Administration**

**Figure**  
4.4.2-A3



**Explanation of Features**

- AAF Railway Line
- 1000' Buffer
- County Boundary
- Census Tract
- Census Tract, Minority > 37.4%
- Census Tract, Minority > 50%

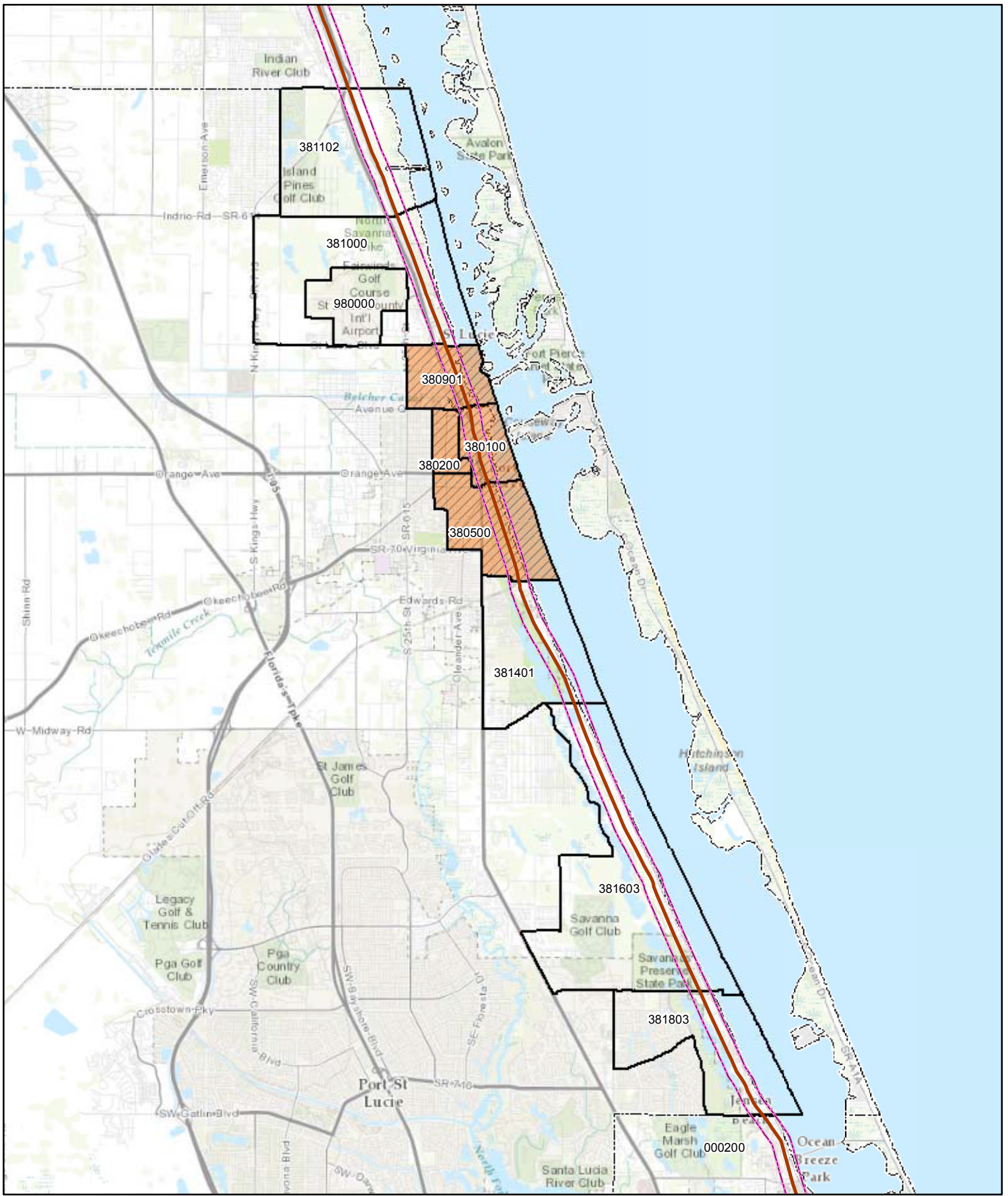
Data Sources: ESRI 2012  
US Census 2010

<b>Indian River County Minority Population Concentrations</b>	
<b>AAF - Passenger Rail Corridor Evaluation</b>	
<b>Figure 4.4.2-A4</b>	

Path: X:\Projects\2013 Projects\6063120212 AAF\MXD\census\_Brevard.mxd

Project # 6063-12-0212





**Explanation of Features**

- AAF Railway Line
- 1000' Buffer
- County Boundary
- Census Tract
- Census Tract, Minority > 37.4%
- Census Tract, Minority > 50%

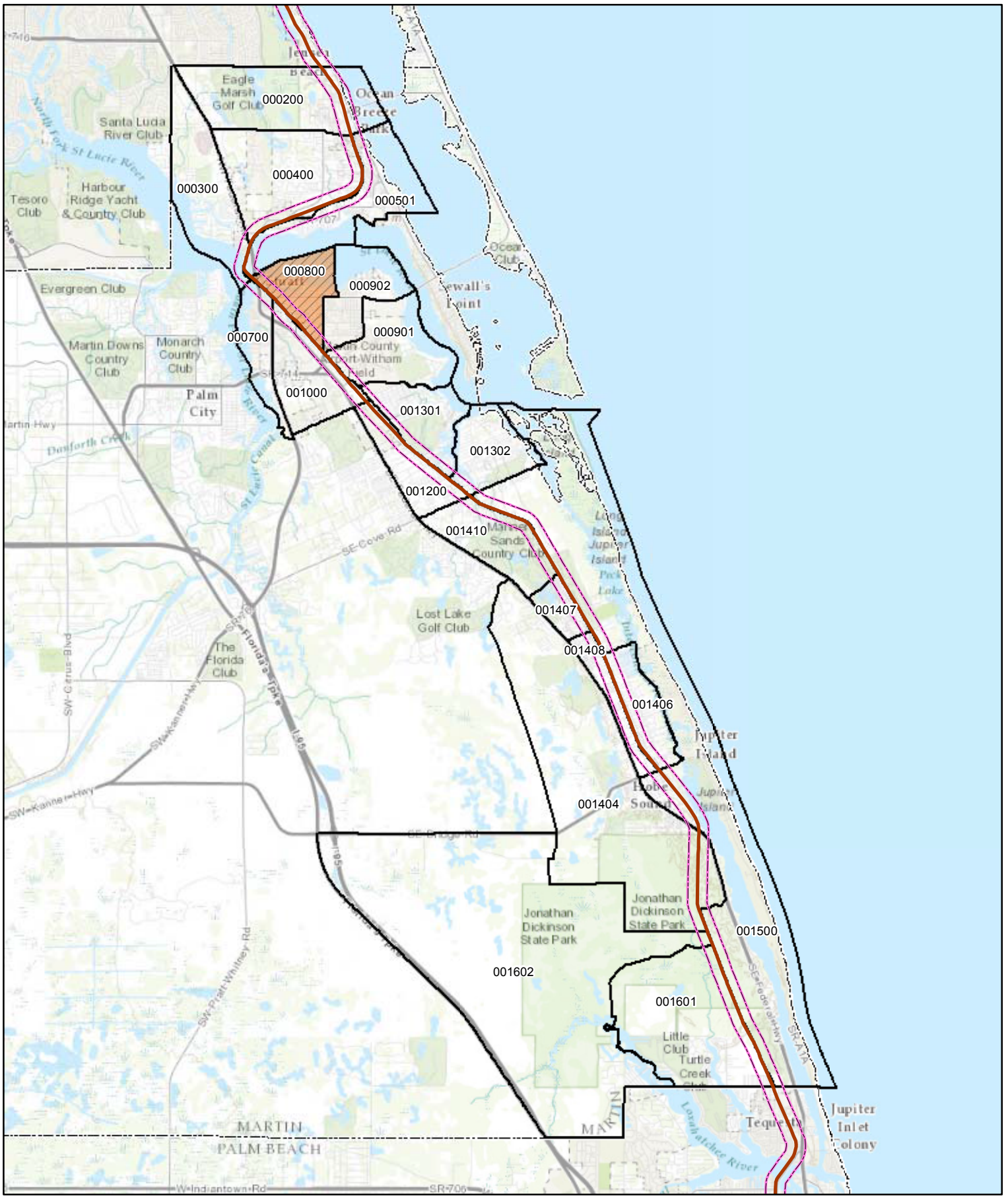
Data Sources: ESRI 2012  
US Census 2010

<b>St. Lucie County Minority Population Concentrations</b>		
<b>AAF - Passenger Rail Corridor Evaluation</b>		
		<b>Figure 4.4.2-A5</b>

Path: X:\Projects\2013 Projects\6063120212 AAF\MXD\Census\_Brevard.mxd

Project # 6063-12-0212





**Explanation of Features**

- AAF Railway Line
- 1000' Buffer
- County Boundary
- Census Tract
- Census Tract, Minority > 37.4%
- Census Tract, Minority > 50%

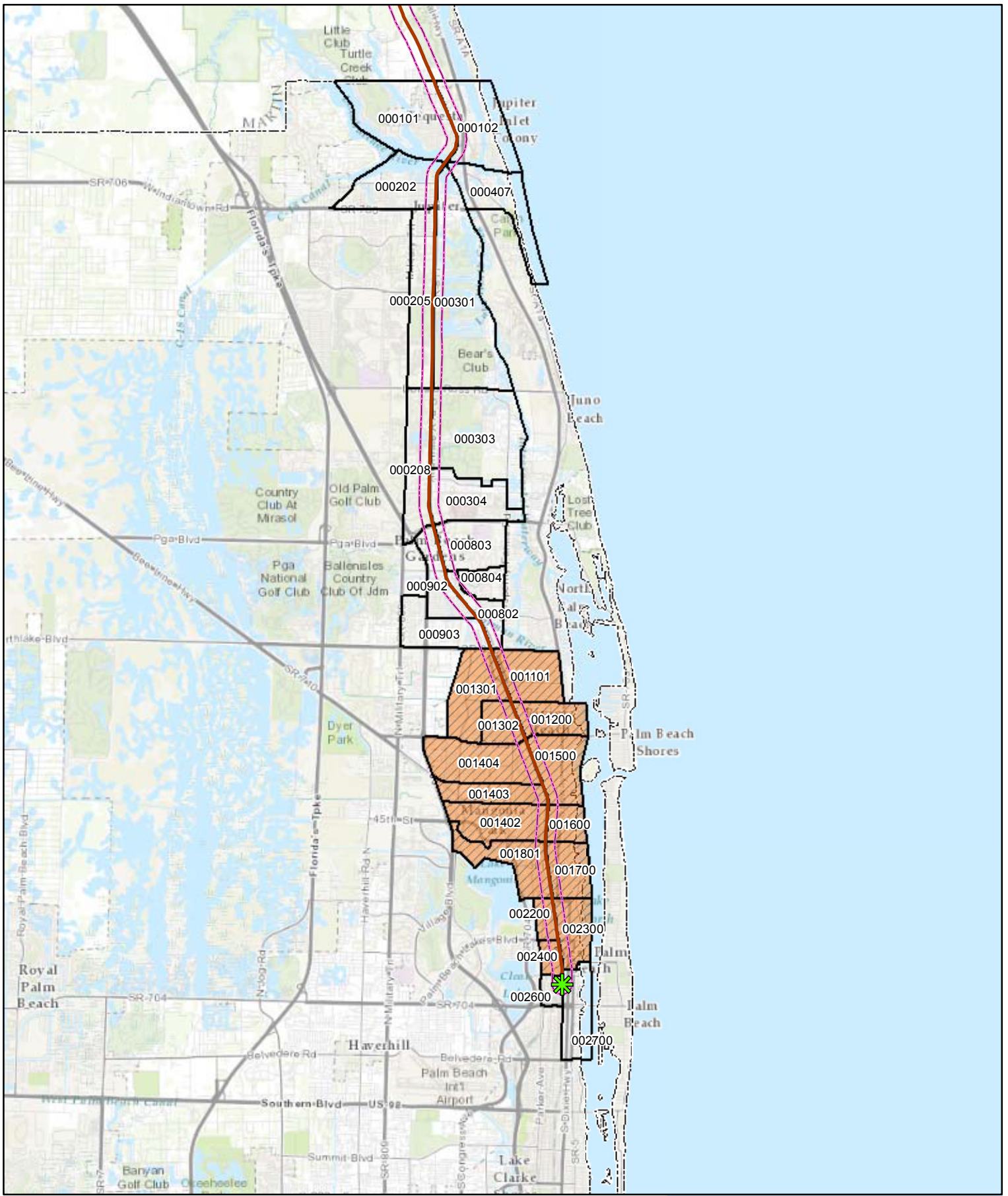
Data Sources: ESRI 2012  
US Census 2010

<b>Martin County Minority Population Concentrations</b>		
<b>AAF - Passenger Rail Corridor Evaluation</b>		
 		<b>Figure</b> <b>4.4.2-A6</b>

Path: X:\Projects\2013 Projects\6063120212 AAF\MXD\census\_Brevard.mxd

Project # 6063-12-0212





**Explanation of Features**

- AAF Railway Line
- 1000' Buffer
- County Boundary
- Census Tract
- Census Tract, Minority > 37.4%
- Census Tract, Minority > 50%
- Proposed West Palm Beach Station

Data Sources: ESRI 2012, US Census 2010

<b>Palm Beach County Minority Population Concentrations</b>		
<b>AAF - Passenger Rail Corridor Evaluation</b>		
		<b>Figure 4.4.2-A7</b>