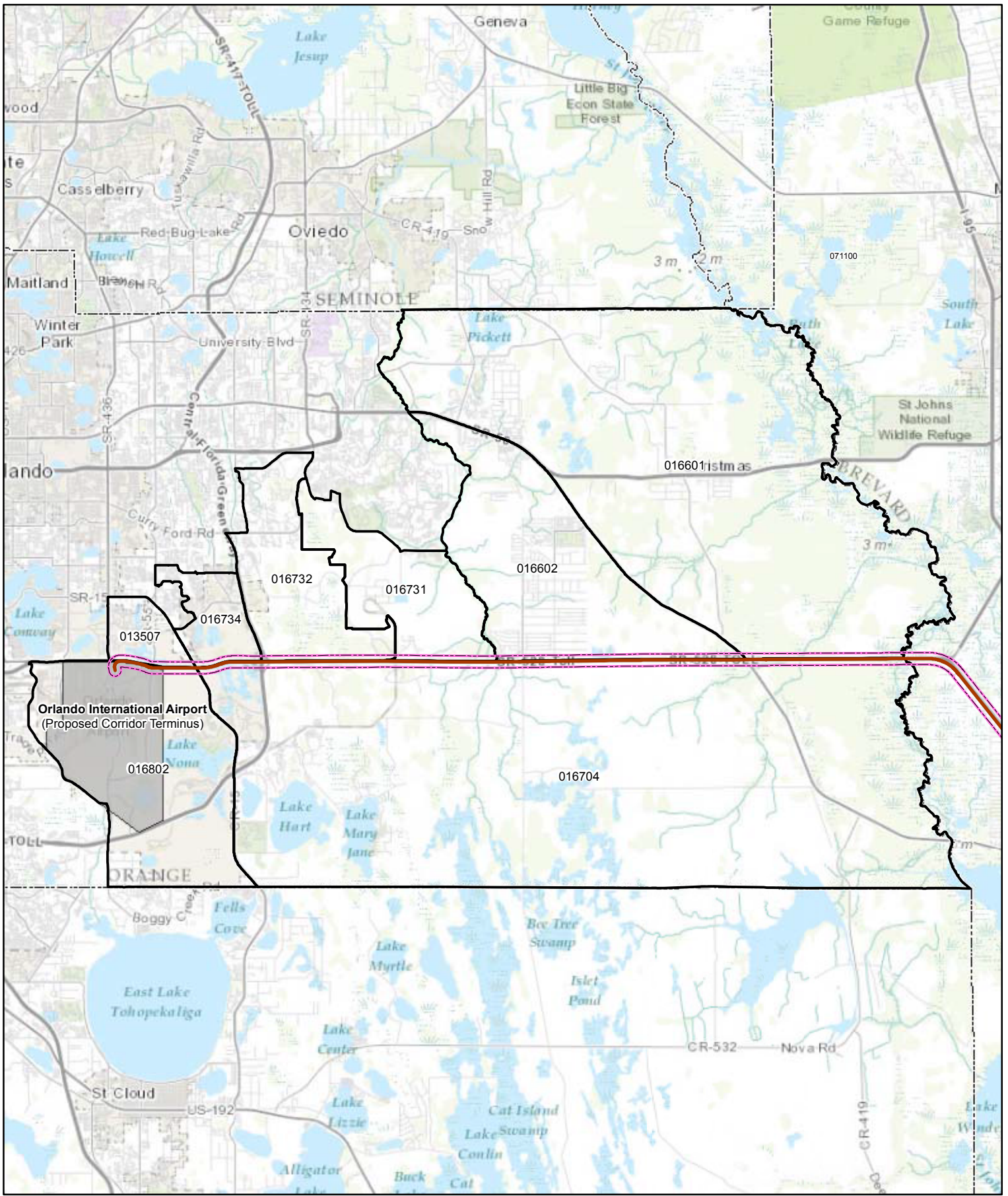


Appendix 4.4.2-B

Low-Income Populations Maps



Explanation of Features

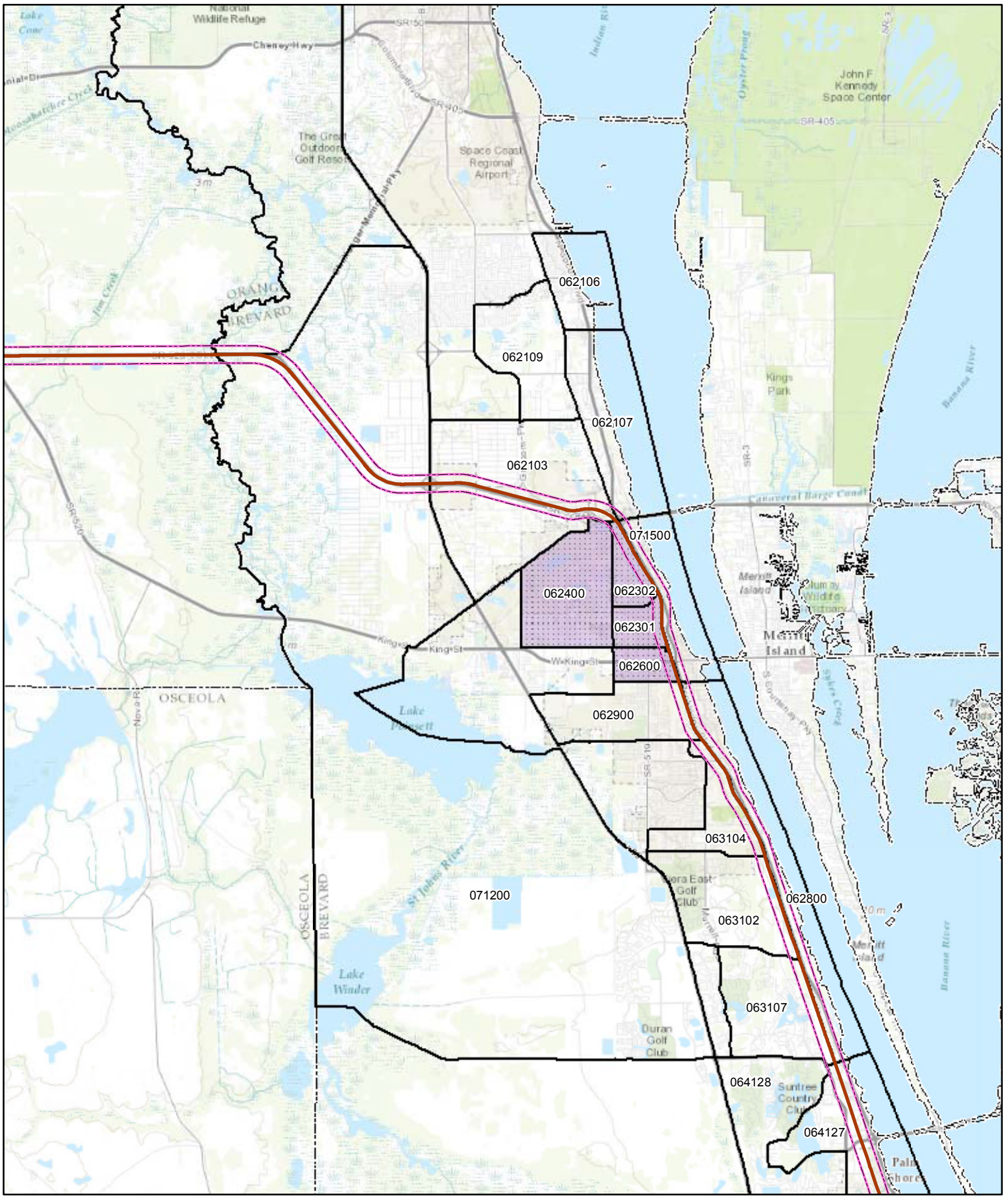
- AAF Railway Line
- 1000' Buffer
- County Boundary
- Census Tract
- Census Tract, Poverty > 22.4%
- Census Tract, Poverty > 50%
- Orlando International Airport

Data Sources: ESRI 2012
US Census 2010

Orange County Low-Income Population Concentrations		
AAF - Passenger Rail Corridor Evaluation		
		Figure 4.4.2-B1

Path: X:\Projects\2013 Projects\6063120212 AAF\MXD\census_brevard.mxd

Project # 6063-12-0212



Explanation of Features

- AAF Railway Line
- 1000' Buffer
- County Boundary
- Census Tract
- Census Tract, Poverty > 22.4%
- Census Tract, Poverty > 50%

Data Sources: ESRI 2012
US Census 2010

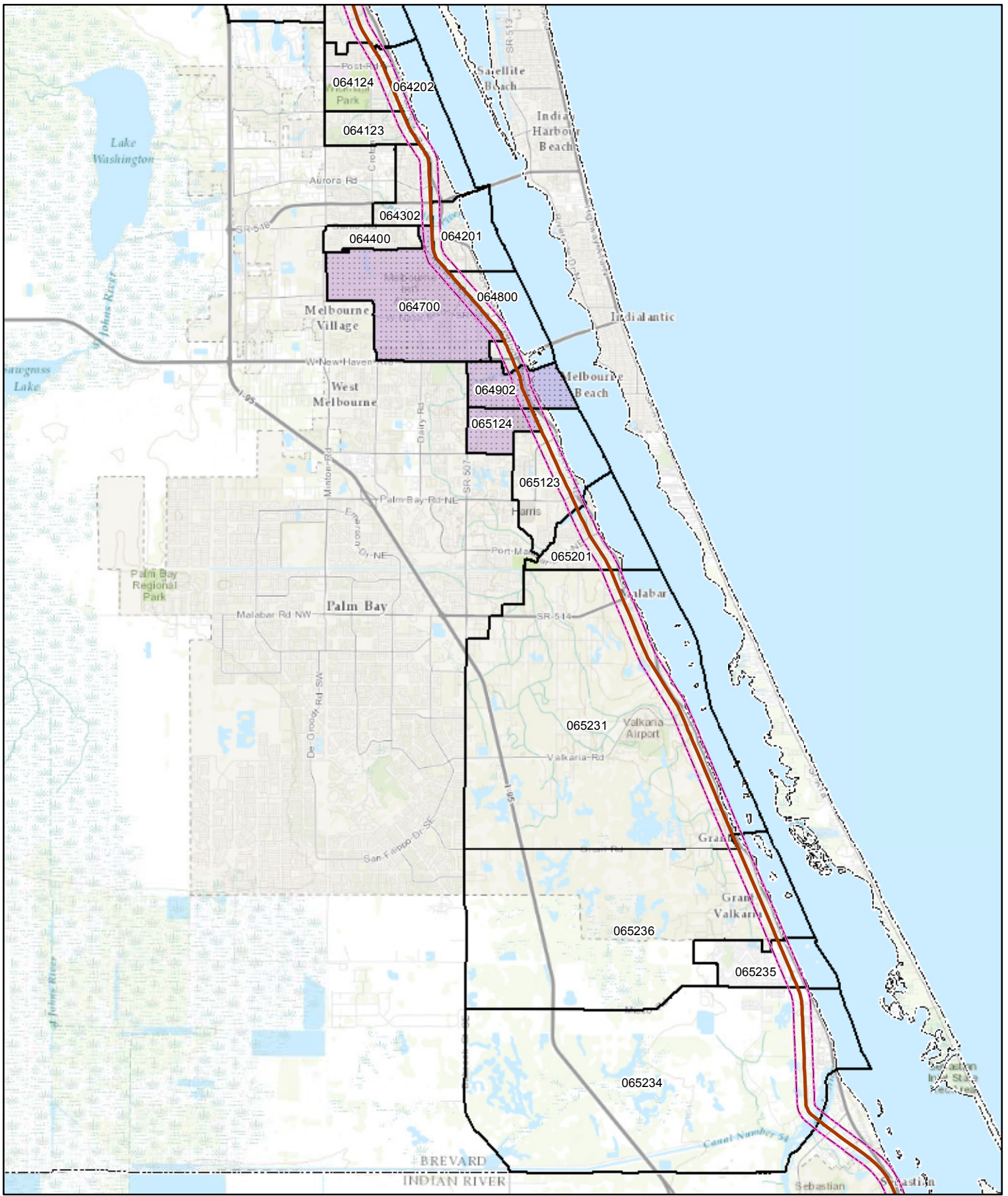
Brevard County Low-Income Population Concentrations

AAF - Passenger Rail Corridor Evaluation



U.S. Department of Transportation
Federal Railroad Administration

Figure
4.4.2-B2



Explanation of Features

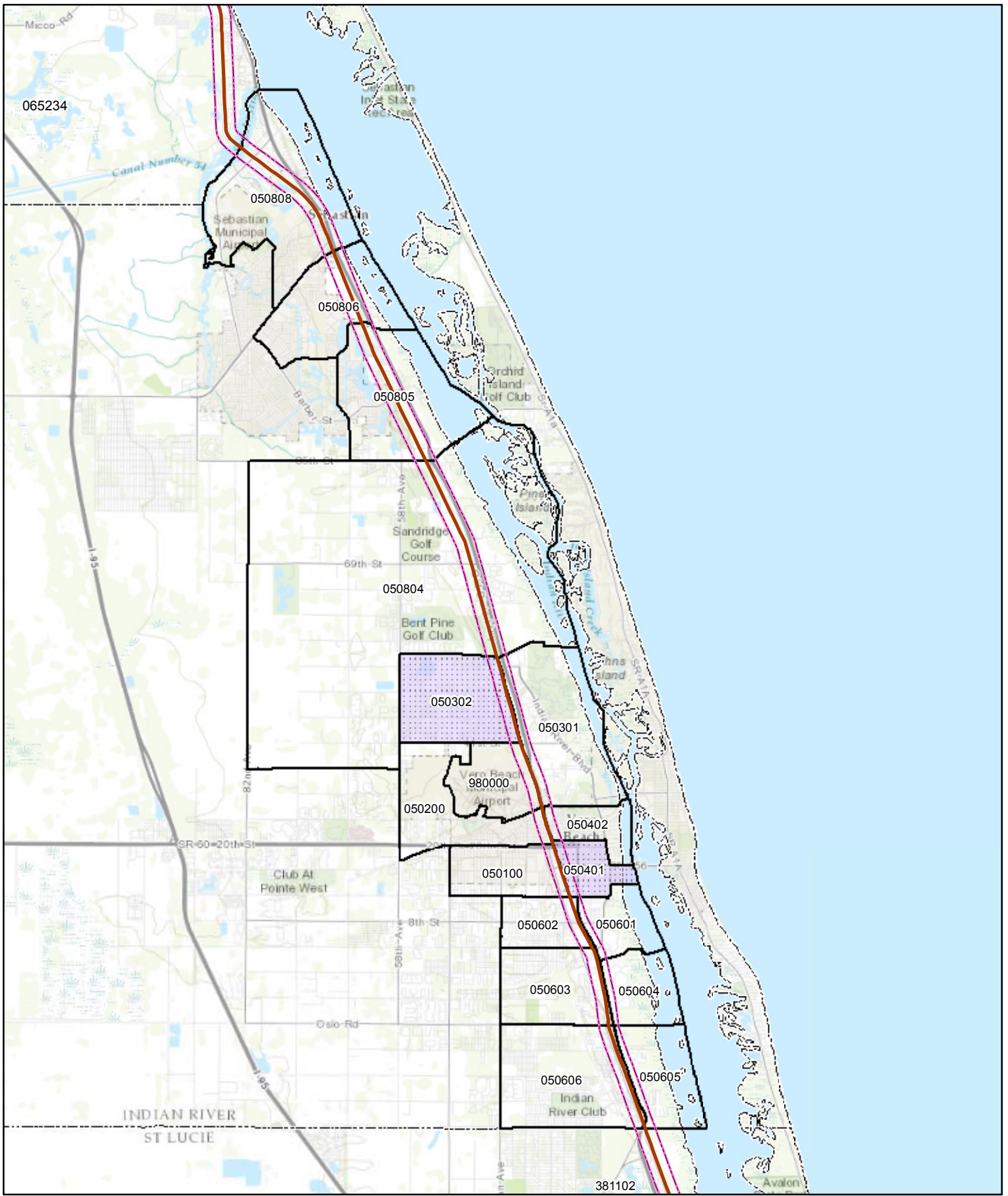
- AAF Railway Line
- 1000' Buffer
- County Boundary
- Census Tract
- Census Tract, Poverty > 22.4%
- Census Tract, Poverty > 50%

Data Sources: ESRI 2012
US Census 2010

Brevard County Low-Income Population Concentrations		
AAF - Passenger Rail Corridor Evaluation		
		Figure 4.4.2-B3

Path: X:\Projects\2013 Projects\6063120212 AAF\MXD\census_Brevard.mxd

Project # 6063-12-0212



Explanation of Features

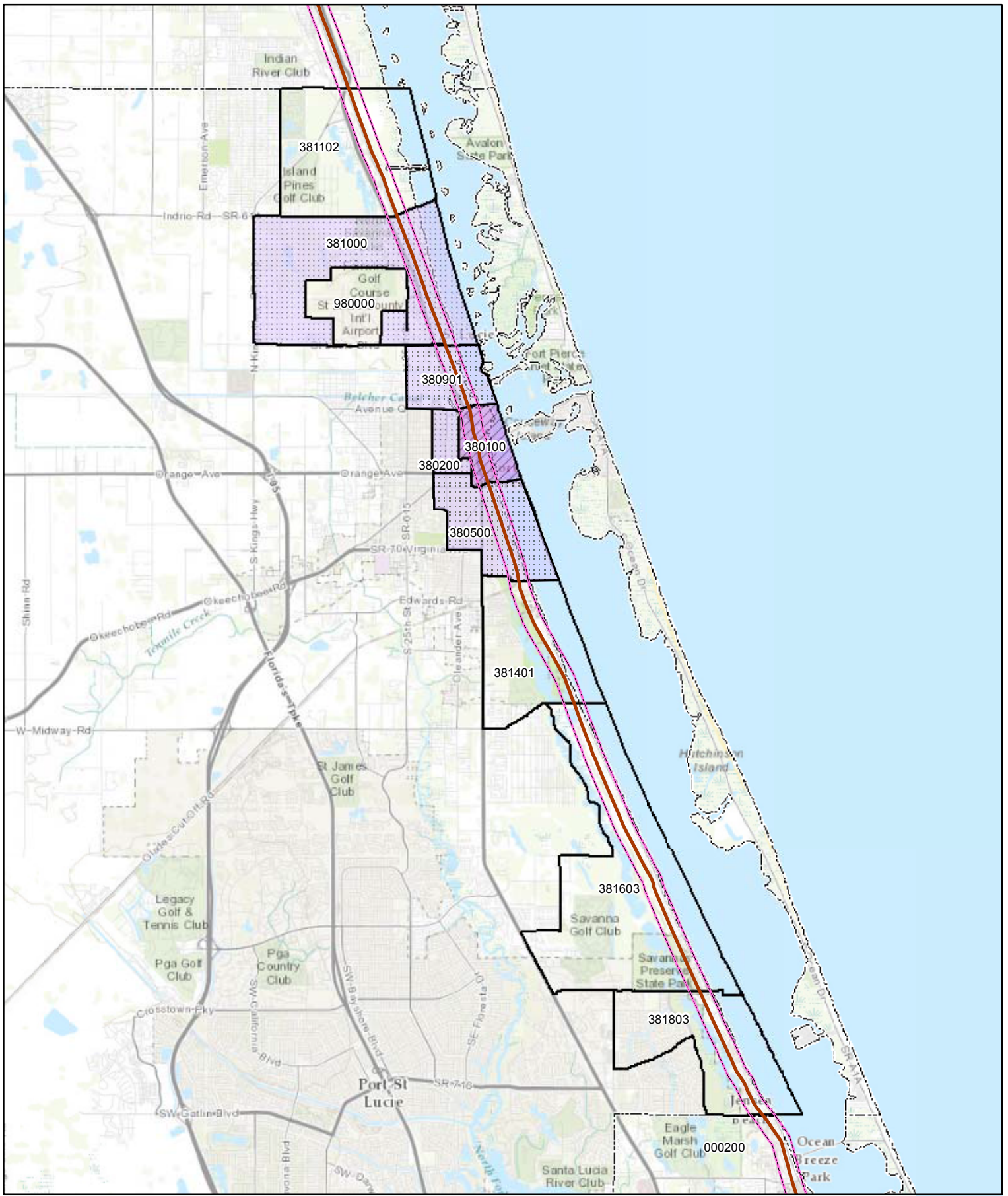
- AAF Railway Line
- 1000' Buffer
- County Boundary
- Census Tract
- Census Tract, Poverty > 22.4%
- Census Tract, Poverty > 50%

Data Sources: ESRI 2012
US Census 2010

Indian River County Low-Income Population Concentrations		
AAF - Passenger Rail Corridor Evaluation		
		Figure 4.4.2-B4

Path: X:\Projects\2013 Projects\6063120212 AAF\MXD\census_Brevard.mxd

Project # 6063-12-0212



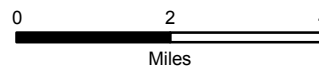
Explanation of Features

- AAF Railway Line
- 1000' Buffer
- County Boundary
- Census Tract
- Census Tract, Poverty > 22.4%
- Census Tract, Poverty > 50%

Data Sources: ESRI 2012
US Census 2010

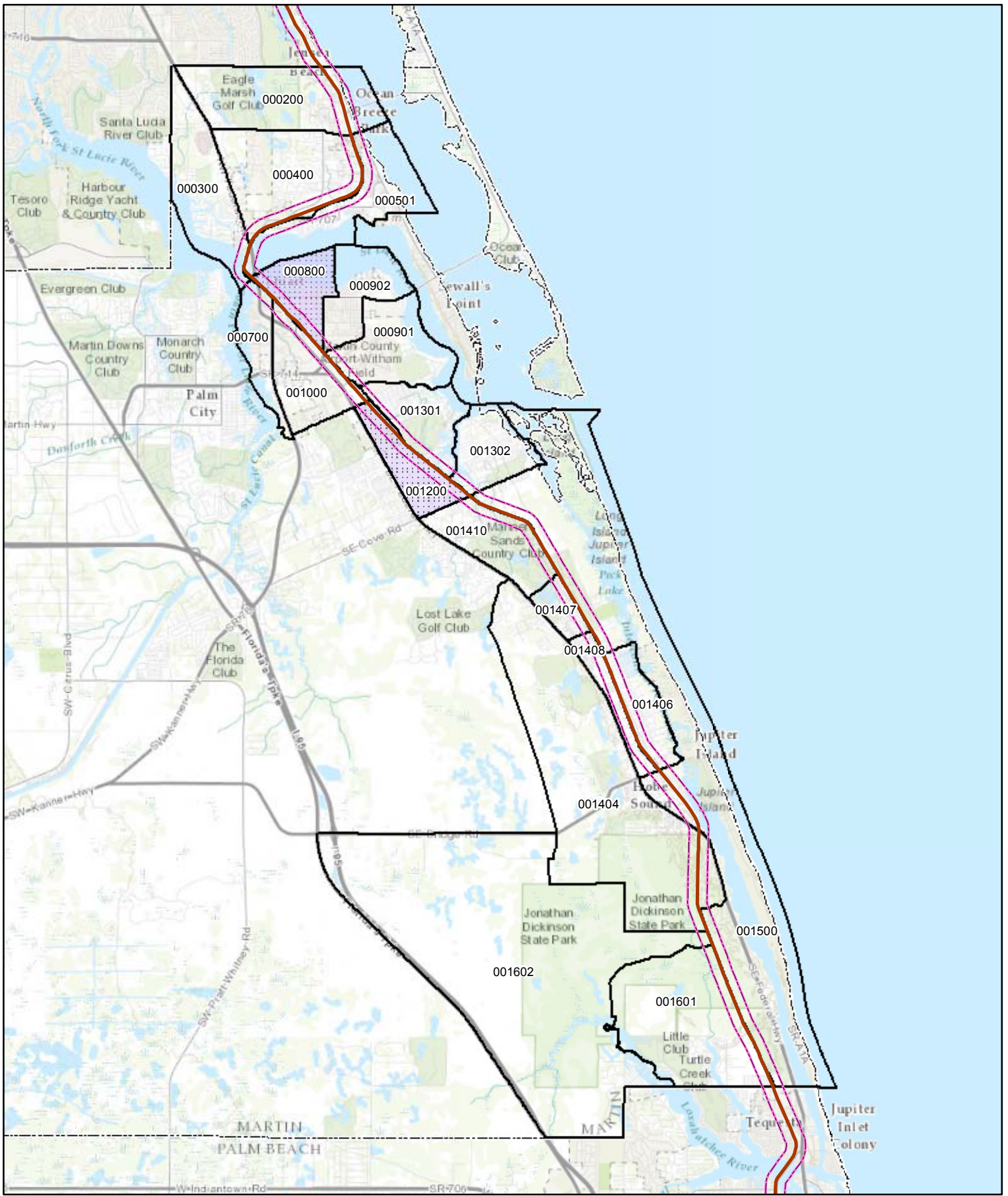
St. Lucie County Low-Income Population Concentrations

AAF - Passenger Rail Corridor Evaluation



U.S. Department of Transportation
Federal Railroad Administration

Figure
4.4.2-B5



Explanation of Features

- AAF Railway Line
- 1000' Buffer
- County Boundary
- Census Tract
- Census Tract, Poverty > 22.4%
- Census Tract, Poverty > 50%

Data Sources: ESRI 2012
US Census 2010

Martin County Low-Income Population Concentrations	
AAF - Passenger Rail Corridor Evaluation	
Figure 4.4.2-B6	

Path: X:\Projects\2013 Projects\6063120212 AAF\MXD\census_Brevard.mxd

Project # 6063-12-0212

