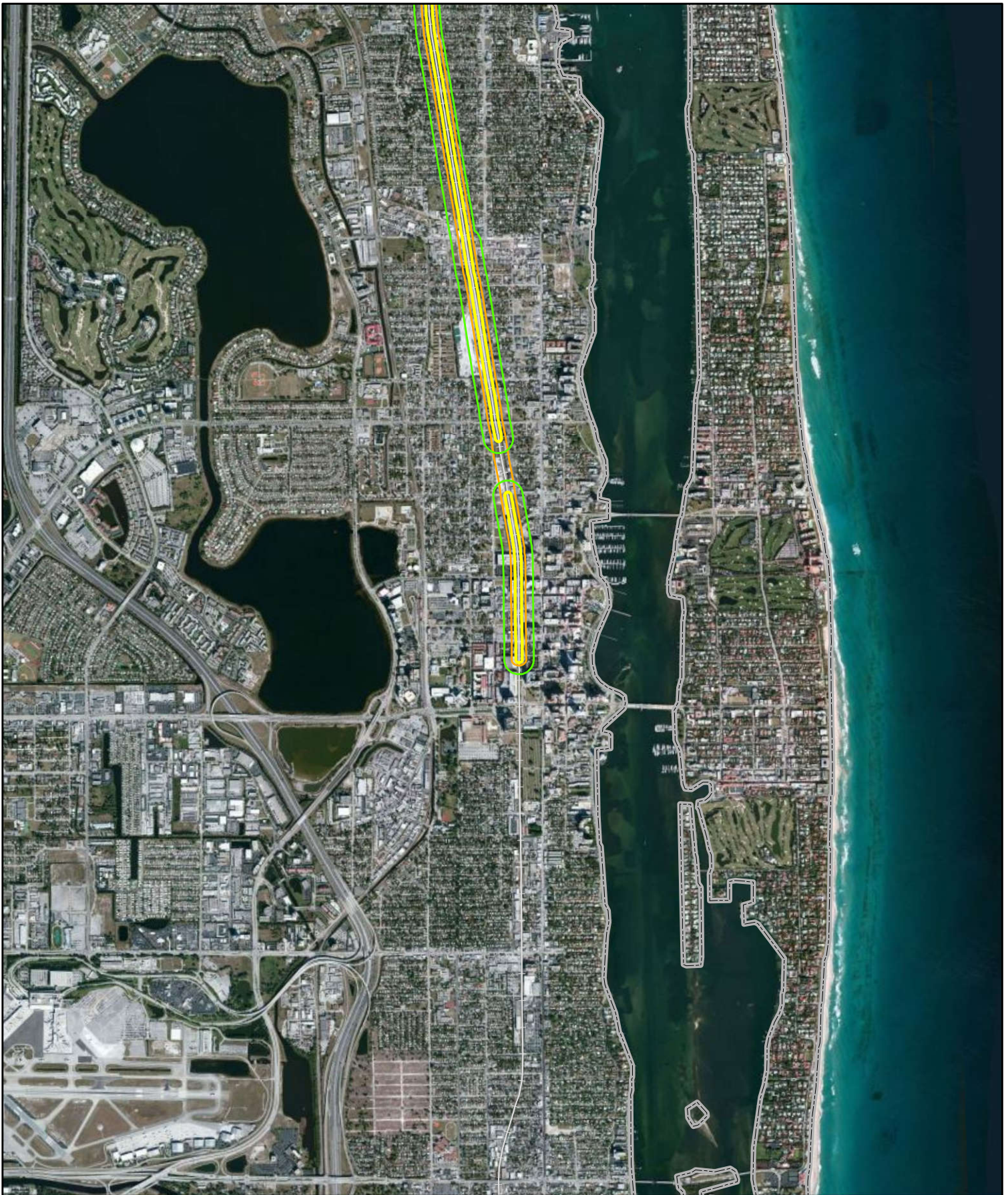


Appendix 5.2.2-A2

Noise and Vibration Impact Maps



Explanation of Features

- Severe Impact Noise
- Moderate Impact Noise
- Vibration Impact
- County Boundary
- AAF Railway Line

Palm Beach County Inventory of Noise and Vibration Impacts		
All Aboard Florida Intercity Passenger Rail Project		
<p>N</p>		<p>Figure 5-1</p>



Explanation of Features

- Severe Impact Noise
- Moderate Impact Noise
- Vibration Impact
- County Boundary
- AAF Railway Line

Palm Beach County Inventory of Noise and Vibration Impacts		
All Aboard Florida Intercity Passenger Rail Project		
<p>N</p> <p>0 1,500 3,000 Feet</p>	<p>U.S. Department of Transportation Federal Railroad Administration</p>	<p>Figure 5-2</p>

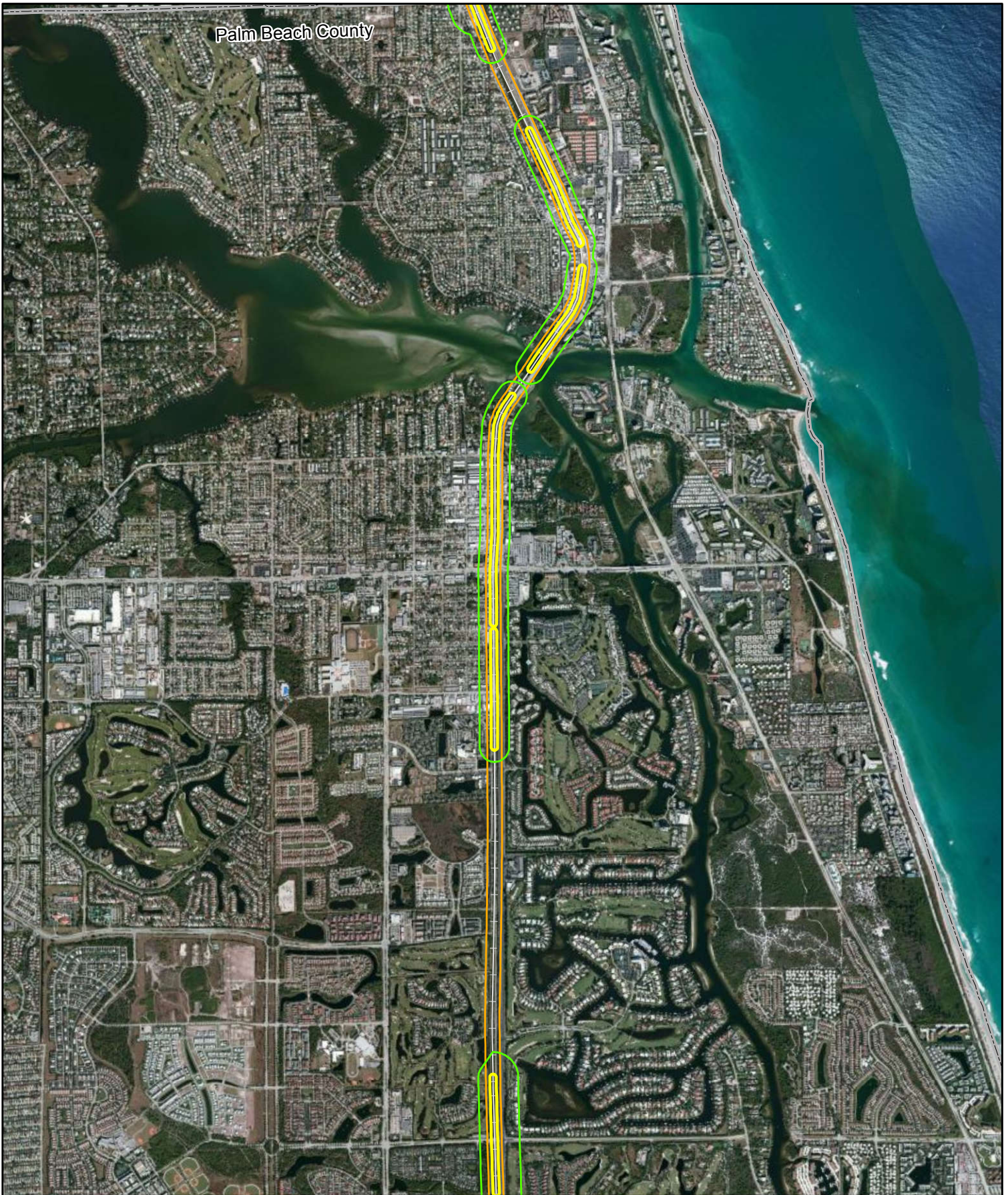


Explanation of Features

- Severe Impact Noise
- Moderate Impact Noise
- Vibration Impact
- County Boundary
- AAF Railway Line

Palm Beach County Inventory of Noise and Vibration Impacts		
All Aboard Florida Intercity Passenger Rail Project		
<p>N</p> <p>0 1,500 3,000 Feet</p>	<p>U.S. Department of Transportation Federal Railroad Administration</p>	<p>Figure 5-3</p>

Palm Beach County



Explanation of Features

- Severe Impact Noise
- Moderate Impact Noise
- Vibration Impact
- County Boundary
- AAF Railway Line

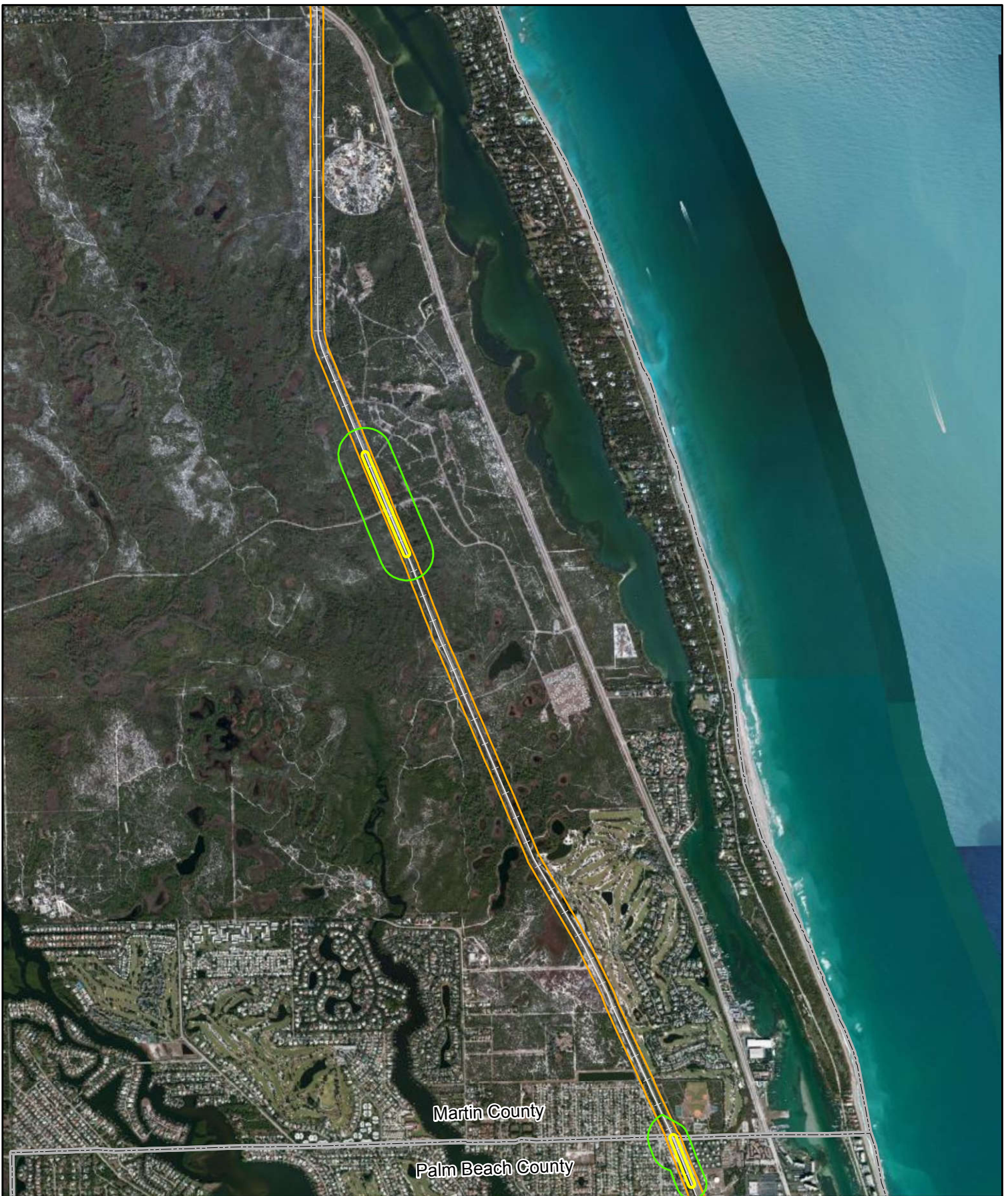
Palm Beach County Inventory of Noise and Vibration Impacts

All Aboard Florida Intercity Passenger Rail Project

N
0 1,500 3,000 Feet

U.S. Department of Transportation
Federal Railroad Administration

Figure 5-4



Martin County

Palm Beach County

Explanation of Features

- Severe Impact Noise
- Moderate Impact Noise
- Vibration Impact
- County Boundary
- AAF Railway Line

Data Sources: ESRI 2012, FRA 2012, FGDL 2012, AMEC 2013

Palm Beach / Martin County Inventory of Noise and Vibration Impacts		
All Aboard Florida Intercity Passenger Rail Project		
<p>N</p>		<p>Figure 5-5</p>

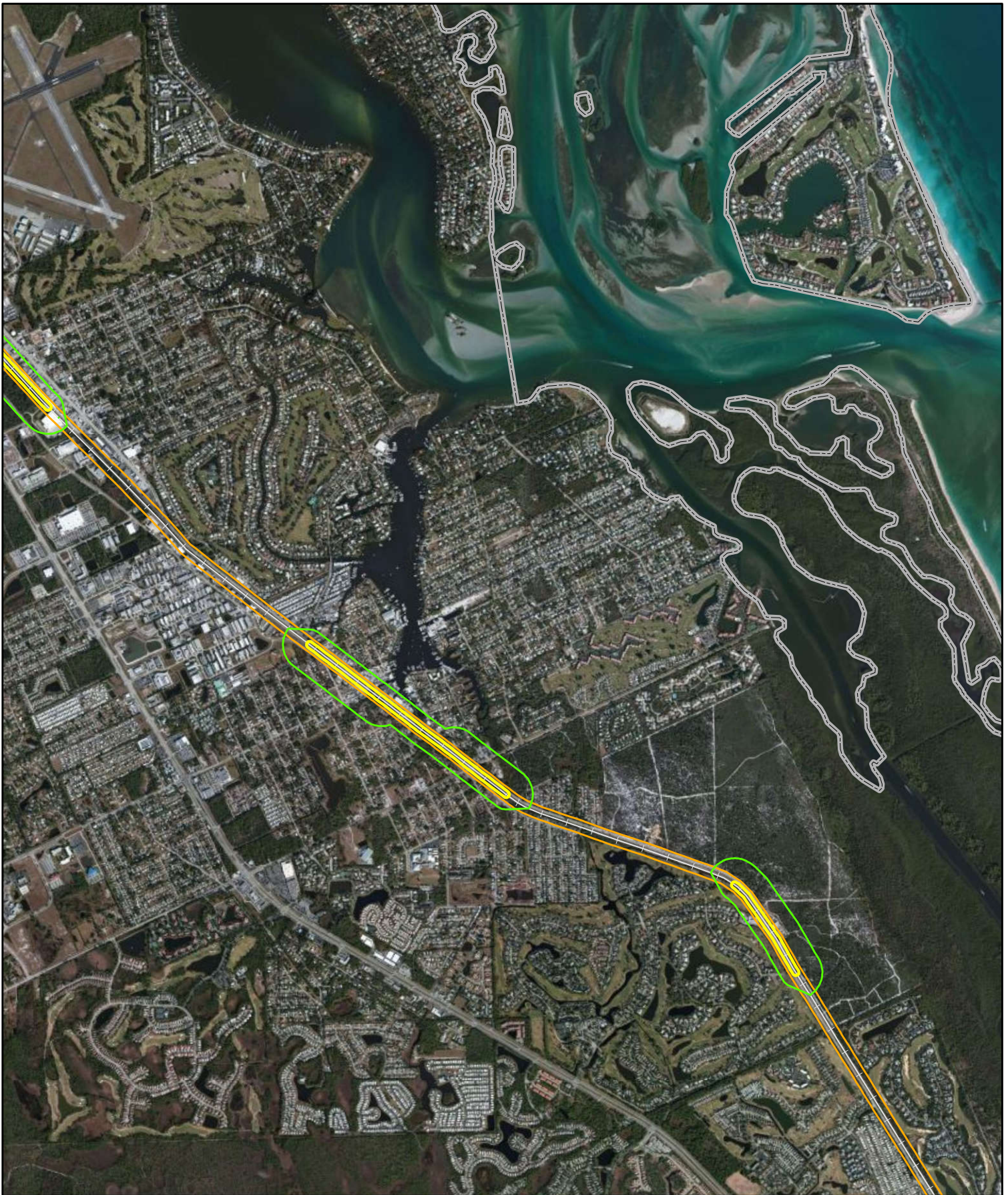
Path: H:\CSX\Floridate_Noise_and_Vibration_Analysis\Task1\MXD\Noise_and_Vibration_Contour_Map_FRA.mxd Project # 6063-12-0212



Explanation of Features

- Severe Impact Noise
- Moderate Impact Noise
- Vibration Impact
- County Boundary
- AAF Railway Line

Martin County Inventory of Noise and Vibration Impacts		
All Aboard Florida Intercity Passenger Rail Project		
<p>N</p> <p>0 1,500 3,000 Feet</p>	<p>U.S. Department of Transportation Federal Railroad Administration</p>	<p>Figure 5-6</p>



Explanation of Features

- Severe Impact Noise
- Moderate Impact Noise
- Vibration Impact
- County Boundary
- AAF Railway Line

Data Sources: ESRI 2012, FRA 2012, FGDL 2012, AMEC 2013

Martin County Inventory of Noise and Vibration Impacts		
All Aboard Florida Intercity Passenger Rail Project		
<p>N</p>		<p>Figure 5-7</p>

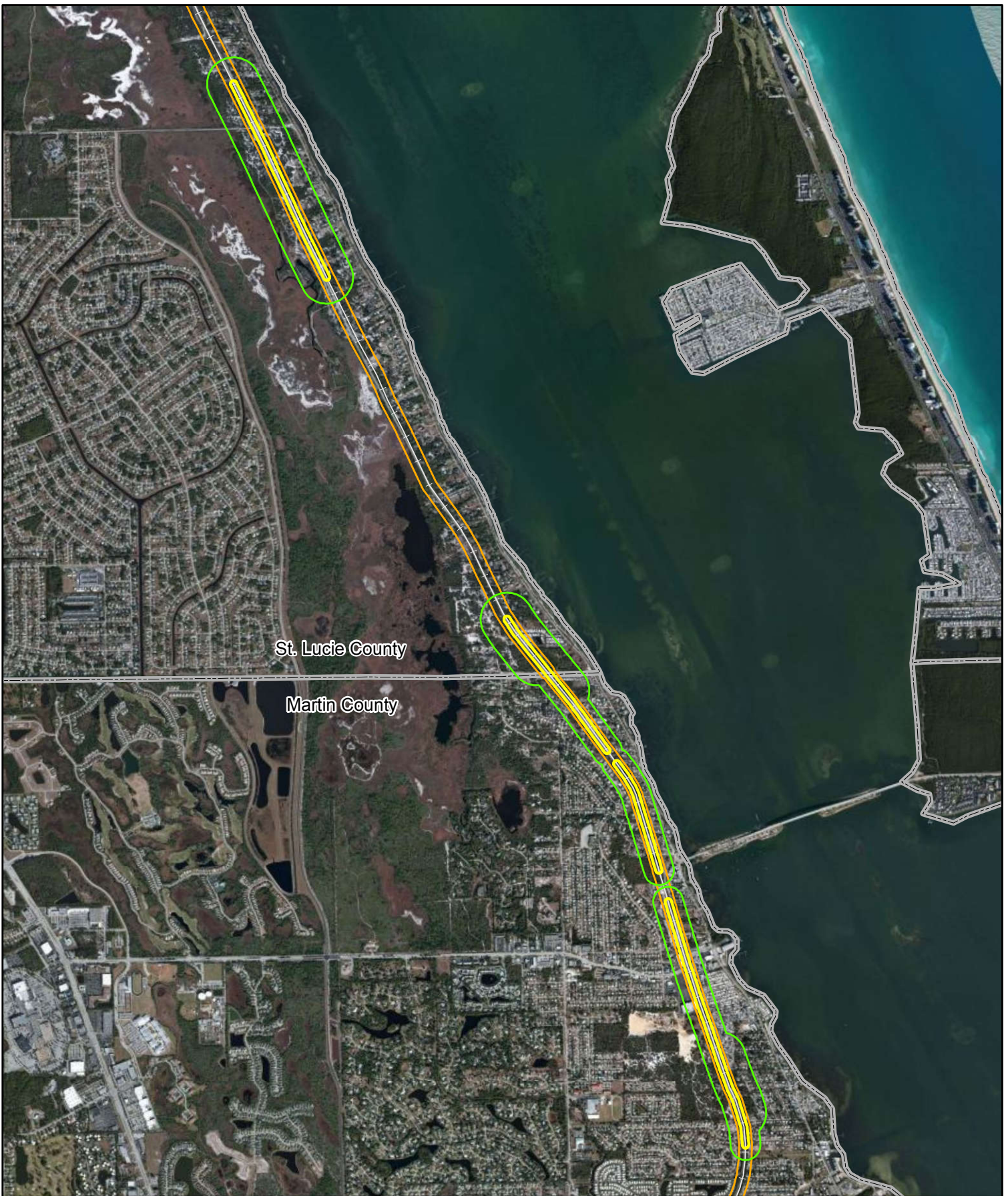
Path: H:\CSX\Floridate_Noise_and_Vibration_Analysis\Task1\MXD\Noise_and_Vibration_Contour_Map_FRA.mxd Project # 6063-12-0212



Explanation of Features

- Severe Impact Noise
- Moderate Impact Noise
- Vibration Impact
- County Boundary
- AAF Railway Line

Martin County Inventory of Noise and Vibration Impacts		
All Aboard Florida Intercity Passenger Rail Project		
 	 U.S. Department of Transportation Federal Railroad Administration	Figure 5-8



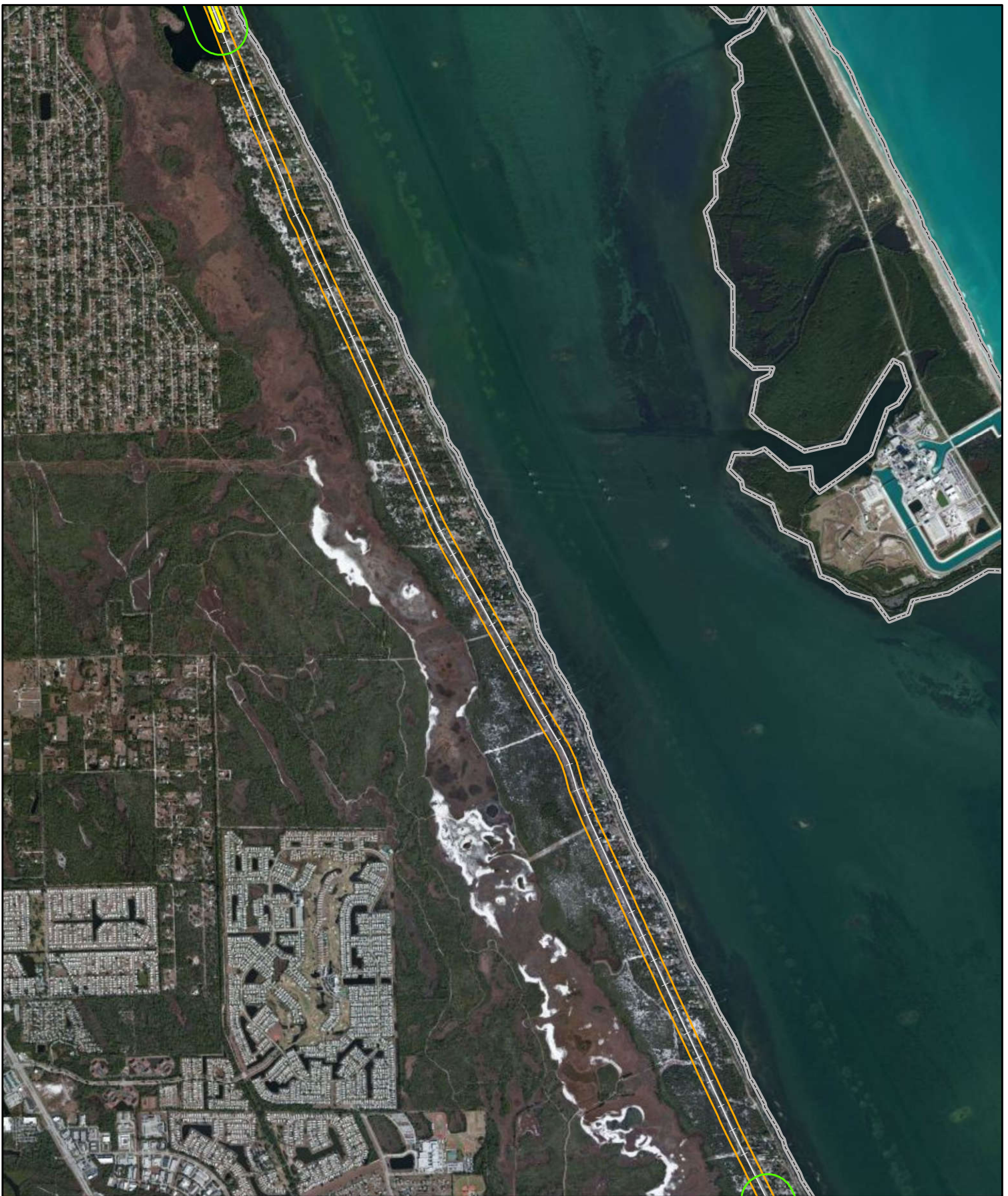
St. Lucie County

Martin County

Explanation of Features

- Severe Impact Noise
- Moderate Impact Noise
- Vibration Impact
- County Boundary
- AAF Railway Line

Martin / St. Lucie County Inventory of Noise and Vibration Impacts		
All Aboard Florida Intercity Passenger Rail Project		
<p>N</p>		<p>Figure 5-9</p>



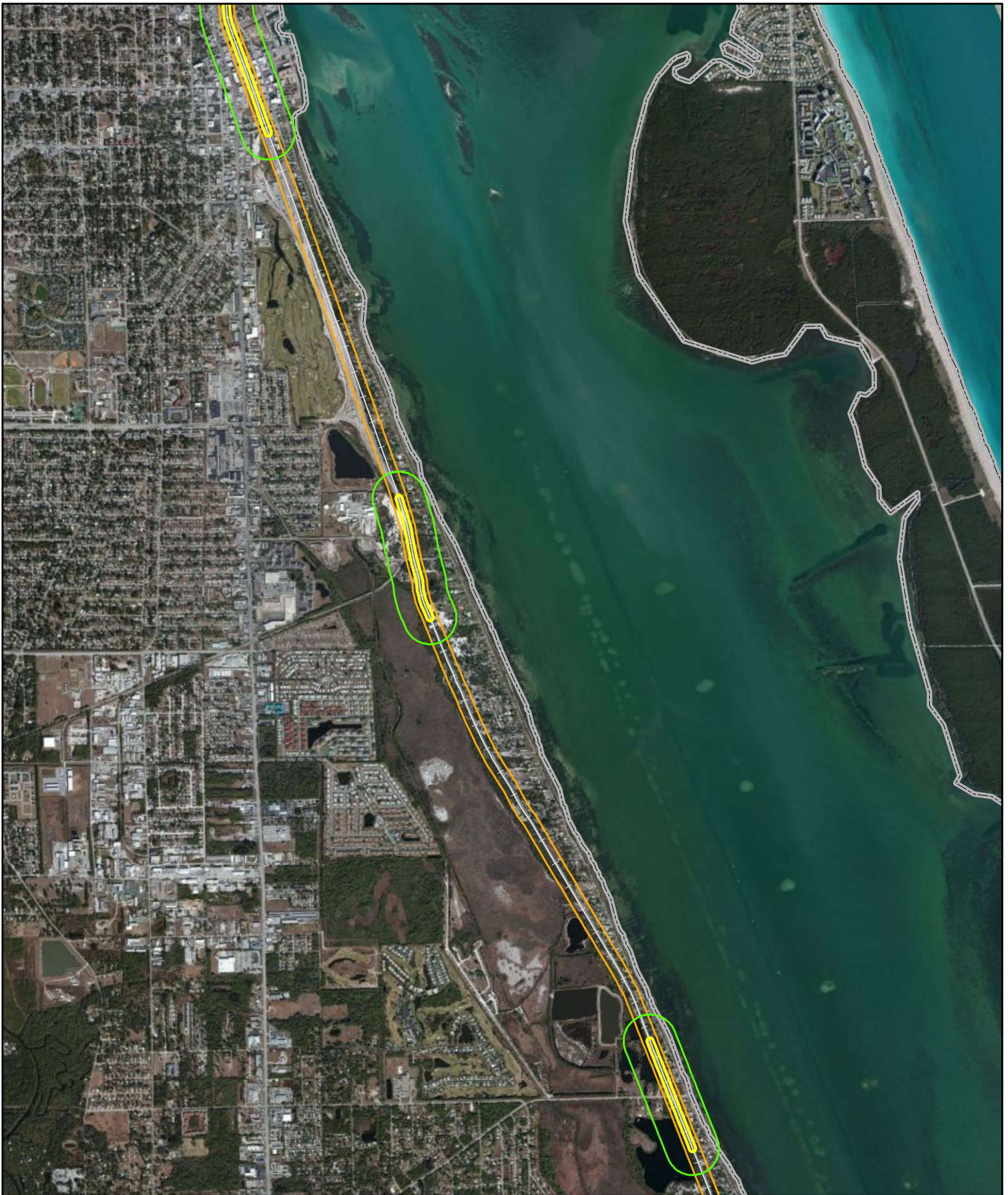
Explanation of Features

- ▭ Severe Impact Noise
- ▭ Moderate Impact Noise
- ▭ Vibration Impact
- County Boundary
- AAF Railway Line

Data Sources: ESRI 2012, FRA 2012, FGDL 2012, AMEC 2013

St. Lucie County Inventory of Noise and Vibration Impacts		
All Aboard Florida Intercity Passenger Rail Project		
		Figure 5-10

Path: H:\CSX\Floridate_Noise_and_Vibration_Analysis\Task1\MXD\Noise_and_Vibration_Contour_Map_FRA.mxd Project # 6063-12-0212



Explanation of Features

- Severe Impact Noise
- Moderate Impact Noise
- Vibration Impact
- County Boundary
- AAF Railway Line

Data Sources: ESRI 2012, FRA 2012, FGDL 2012, AMEC 2013

St. Lucie County Inventory of Noise and Vibration Impacts		
All Aboard Florida Intercity Passenger Rail Project		
		Figure 5-11

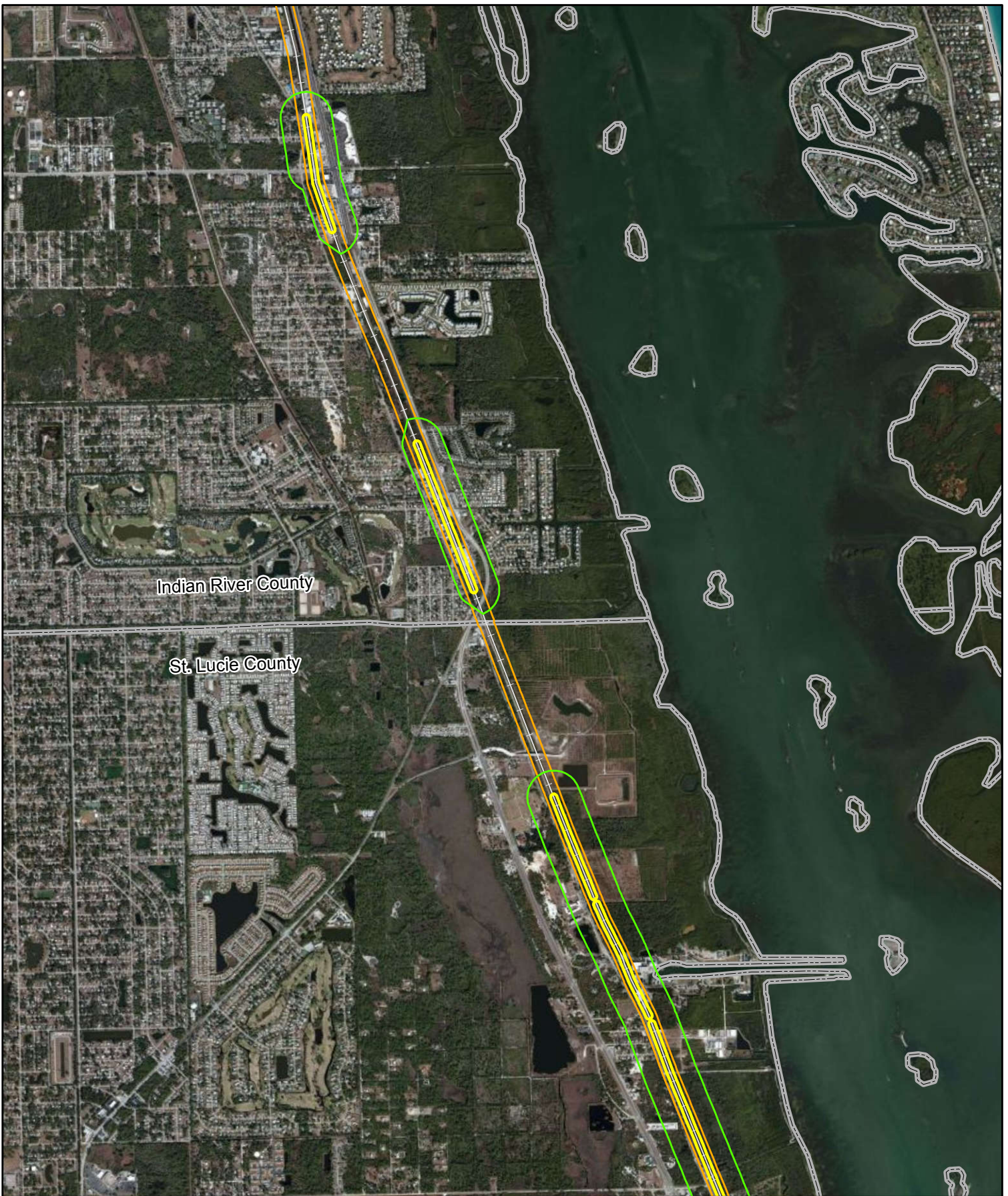
Path: H:\CSX\Floridate_Noise_and_Vibration_Analysis\Task1\MXD\Noise_and_Vibration_Contour_Map_FRA.mxd Project # 6063-12-0212



Explanation of Features

- Severe Impact Noise
- Moderate Impact Noise
- Vibration Impact
- County Boundary
- AAF Railway Line

St. Lucie County Inventory of Noise and Vibration Impacts		
All Aboard Florida Intercity Passenger Rail Project		
		Figure 5-12



Indian River County

St. Lucie County

Explanation of Features

- Severe Impact Noise
- Moderate Impact Noise
- Vibration Impact
- County Boundary
- AAF Railway Line

St. Lucie / Indian River County Inventory of Noise and Vibration Impacts

All Aboard Florida Intercity Passenger Rail Project



Figure 5-13



Explanation of Features

- Severe Impact Noise
- Moderate Impact Noise
- Vibration Impact
- County Boundary
- AAF Railway Line

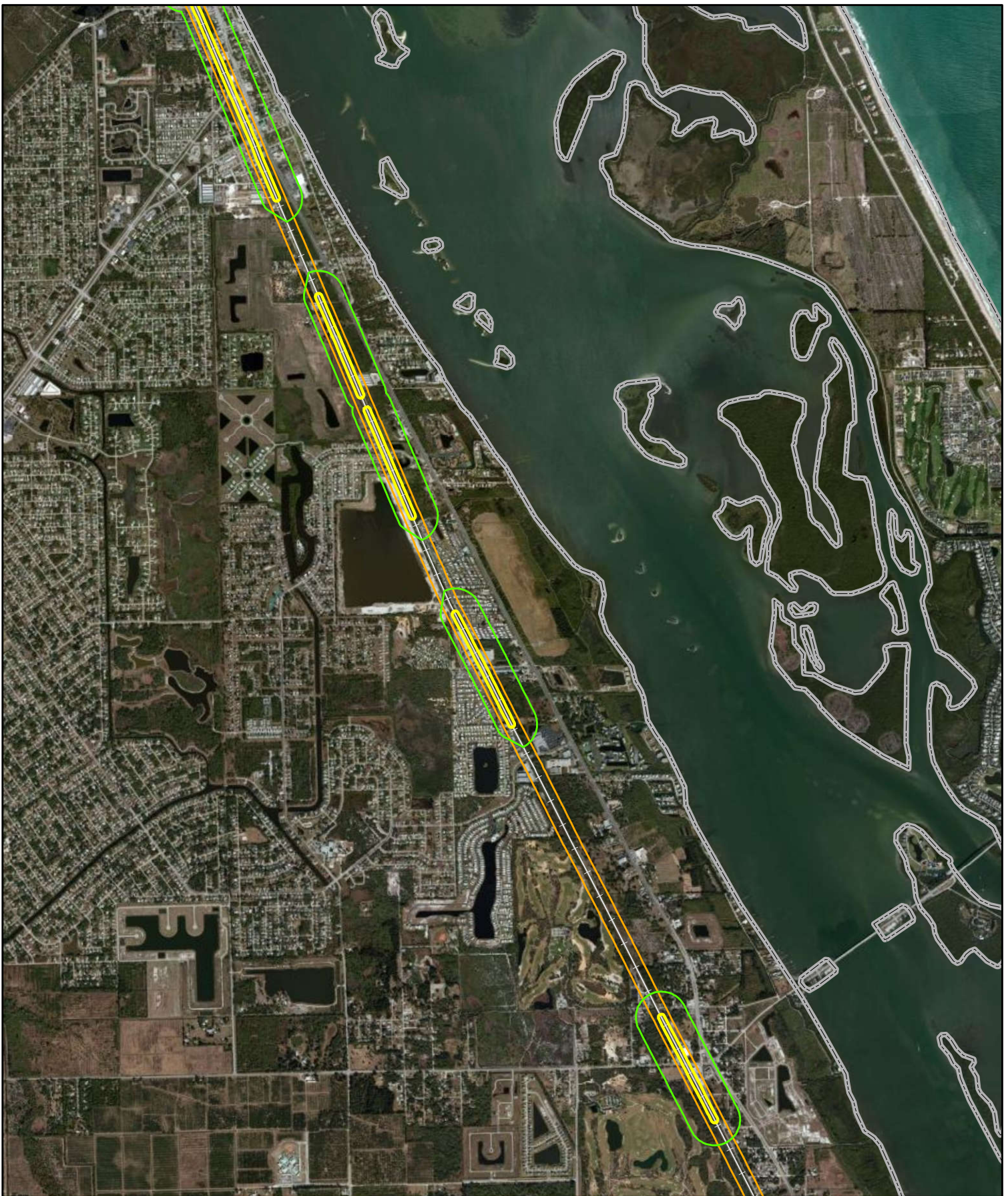
Indian River County Inventory of Noise and Vibration Impacts		
All Aboard Florida Intercity Passenger Rail Project		
<p>N</p>		<p>Figure 5-14</p>



Explanation of Features

- Severe Impact Noise
- Moderate Impact Noise
- Vibration Impact
- County Boundary
- AAF Railway Line

Indian River County Inventory of Noise and Vibration Impacts		
All Aboard Florida Intercity Passenger Rail Project		
<p>N</p> <p>0 1,500 3,000 Feet</p>	<p>U.S. Department of Transportation Federal Railroad Administration</p>	<p>Figure 5-15</p>



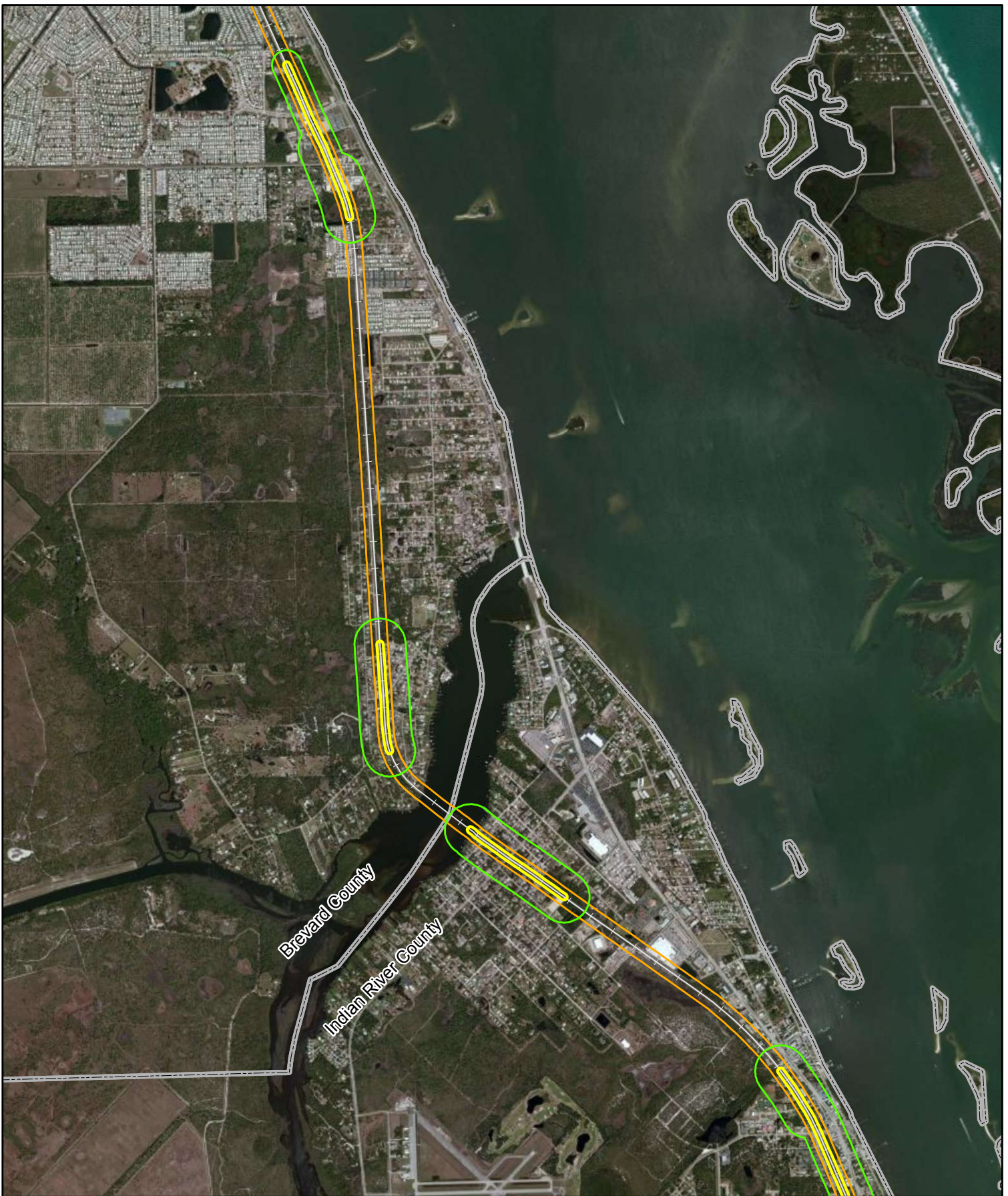
Explanation of Features

- Severe Impact Noise
- Moderate Impact Noise
- Vibration Impact
- County Boundary
- AAF Railway Line

Data Sources: ESRI 2012, FRA 2012, FGDL 2012, AMEC 2013

Indian River County Inventory of Noise and Vibration Impacts		
All Aboard Florida Intercity Passenger Rail Project		
 	 U.S. Department of Transportation Federal Railroad Administration	Figure 5-16

Path: H:\CSX\Floridate_Noise_and_Vibration_Analysis\Task1\MXD\Noise_and_Vibration_Contour_Map_FRA.mxd Project # 6063-12-0212



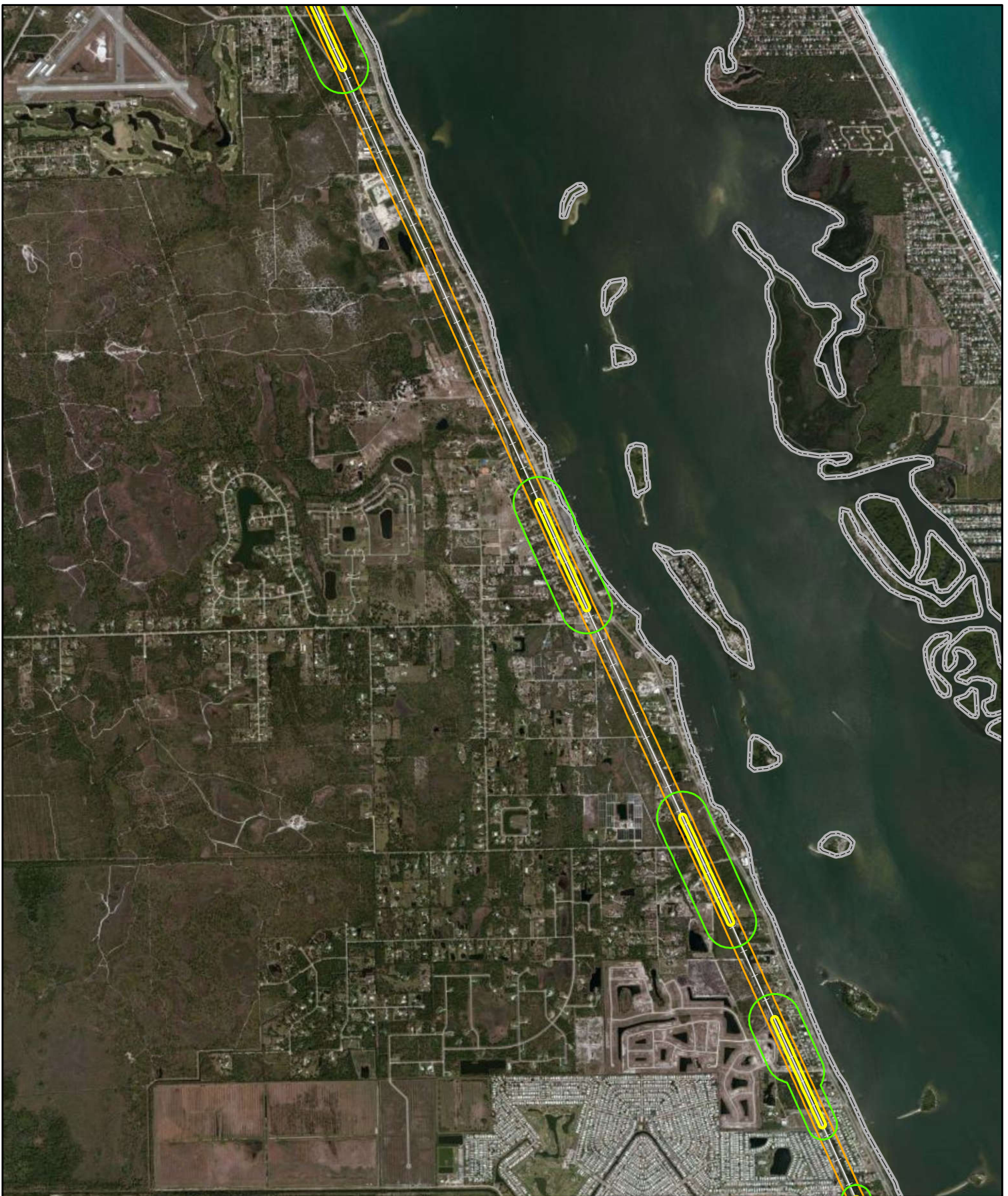
Explanation of Features

- Severe Impact Noise
- Moderate Impact Noise
- Vibration Impact
- County Boundary
- AAF Railway Line

Data Sources: ESRI 2012, FRA 2012, FGDL 2012, AMEC 2013

Indian River / Brevard County Inventory of Noise and Vibration Impacts		
All Aboard Florida Intercity Passenger Rail Project		
 	 U.S. Department of Transportation Federal Railroad Administration	Figure 5-17

Path: H:\CSXI\Floridate_Noise_and_Vibration_Analysis\Task1\MXD\Noise_and_Vibration_Contour_Map_FRA.mxd Project # 6063-12-0212



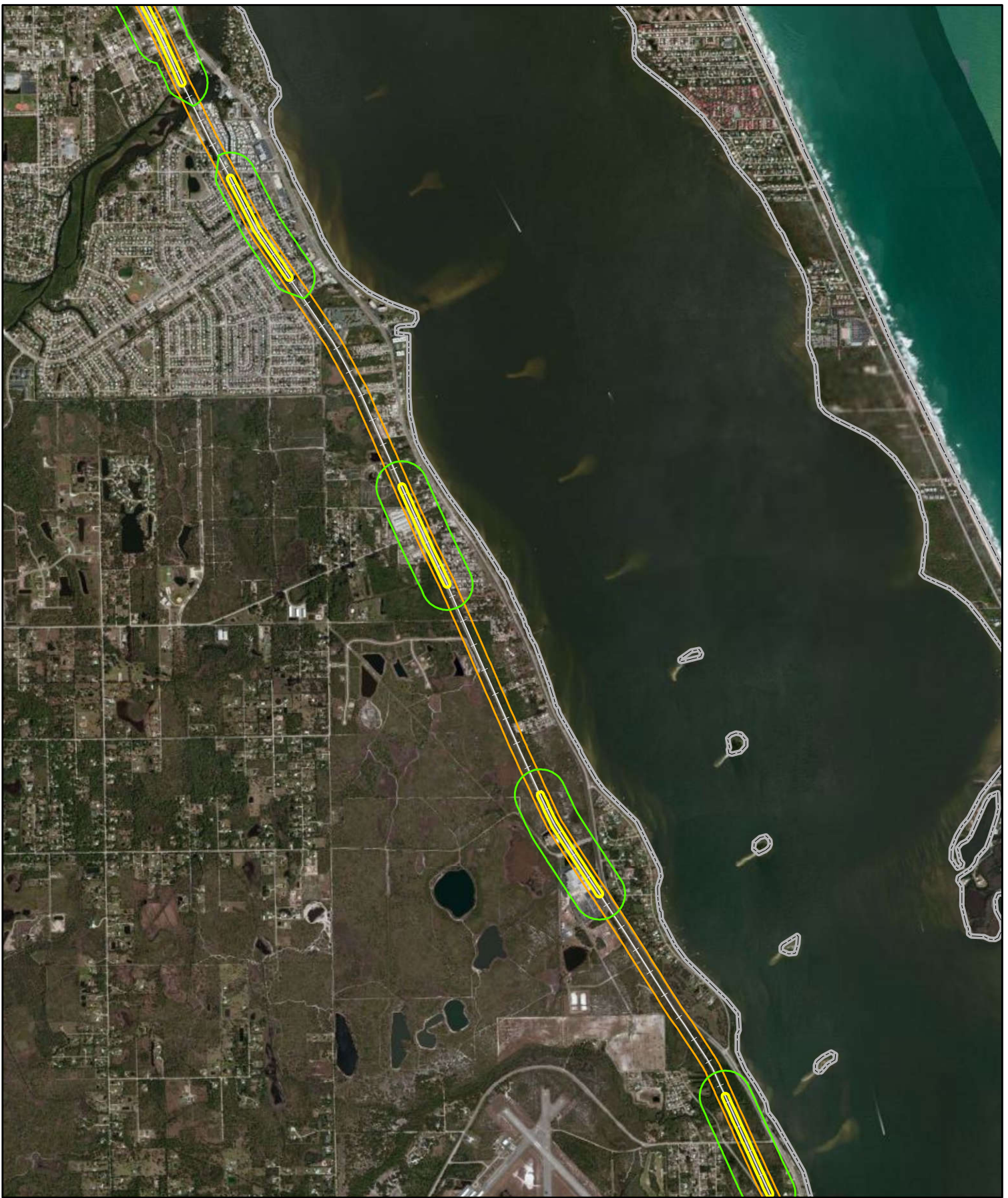
Explanation of Features

- Severe Impact Noise
- Moderate Impact Noise
- Vibration Impact
- County Boundary
- + AAF Railway Line

Data Sources: ESRI 2012, FRA 2012, FGDL 2012, AMEC 2013

Brevard County Inventory of Noise and Vibration Impacts		
All Aboard Florida Intercity Passenger Rail Project		
		Figure 5-18

Path: H:\CSX\Floridate_Noise_and_Vibration_Analysis\Task1\MXD\Noise_and_Vibration_Contour_Map_FRA.mxd Project # 6063-12-0212



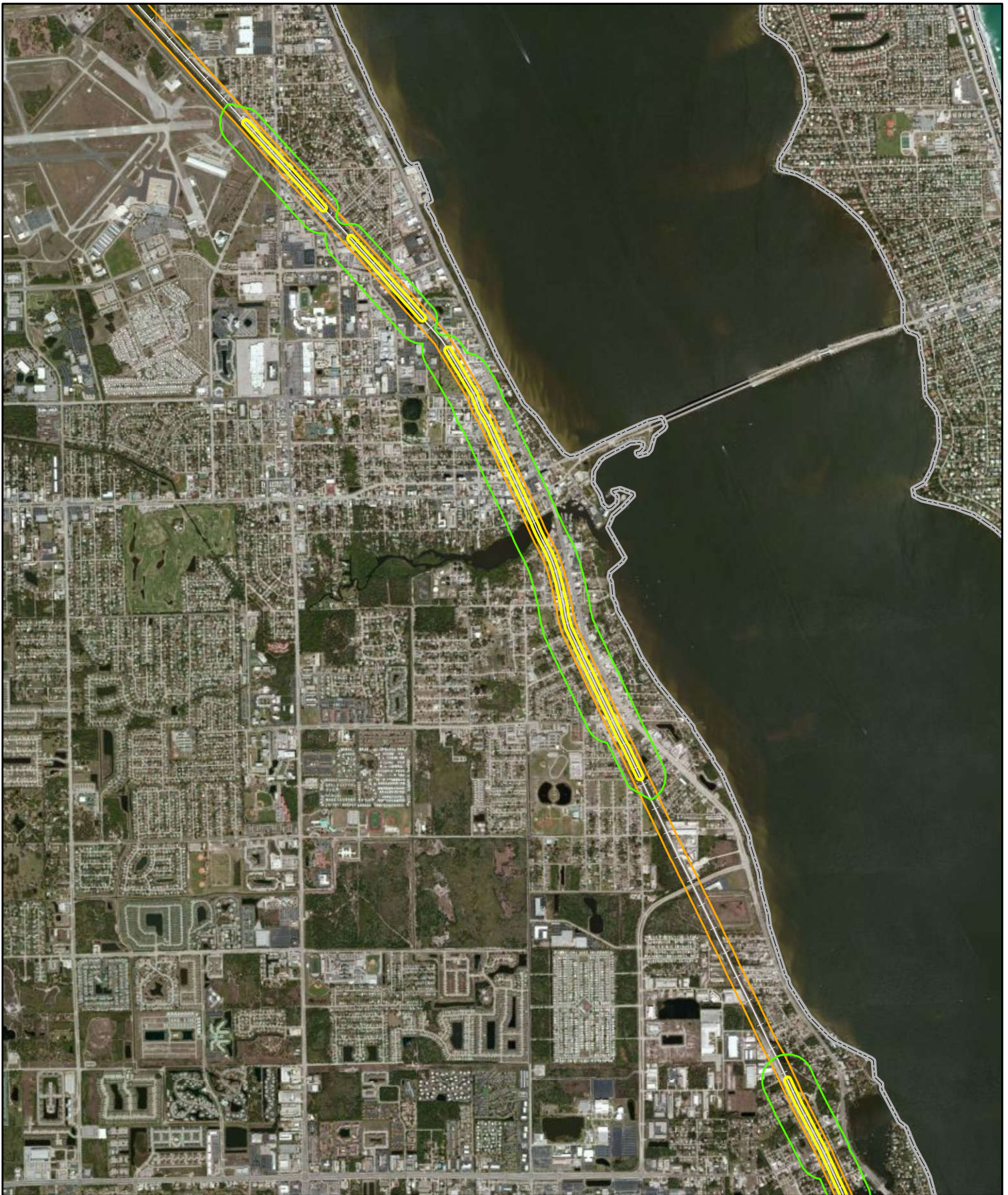
Explanation of Features

- Severe Impact Noise
- Moderate Impact Noise
- Vibration Impact
- County Boundary
- AAF Railway Line

Data Sources: ESRI 2012, FRA 2012, FGDL 2012, AMEC 2013

Brevard County Inventory of Noise and Vibration Impacts		
All Aboard Florida Intercity Passenger Rail Project		
		Figure 5-19

Path: H:\CSX\Florida\Noise_and_Vibration_Analysis\Task1\MXD\Noise_and_Vibration_Contour_Map_FRA.mxd Project # 6063-12-0212



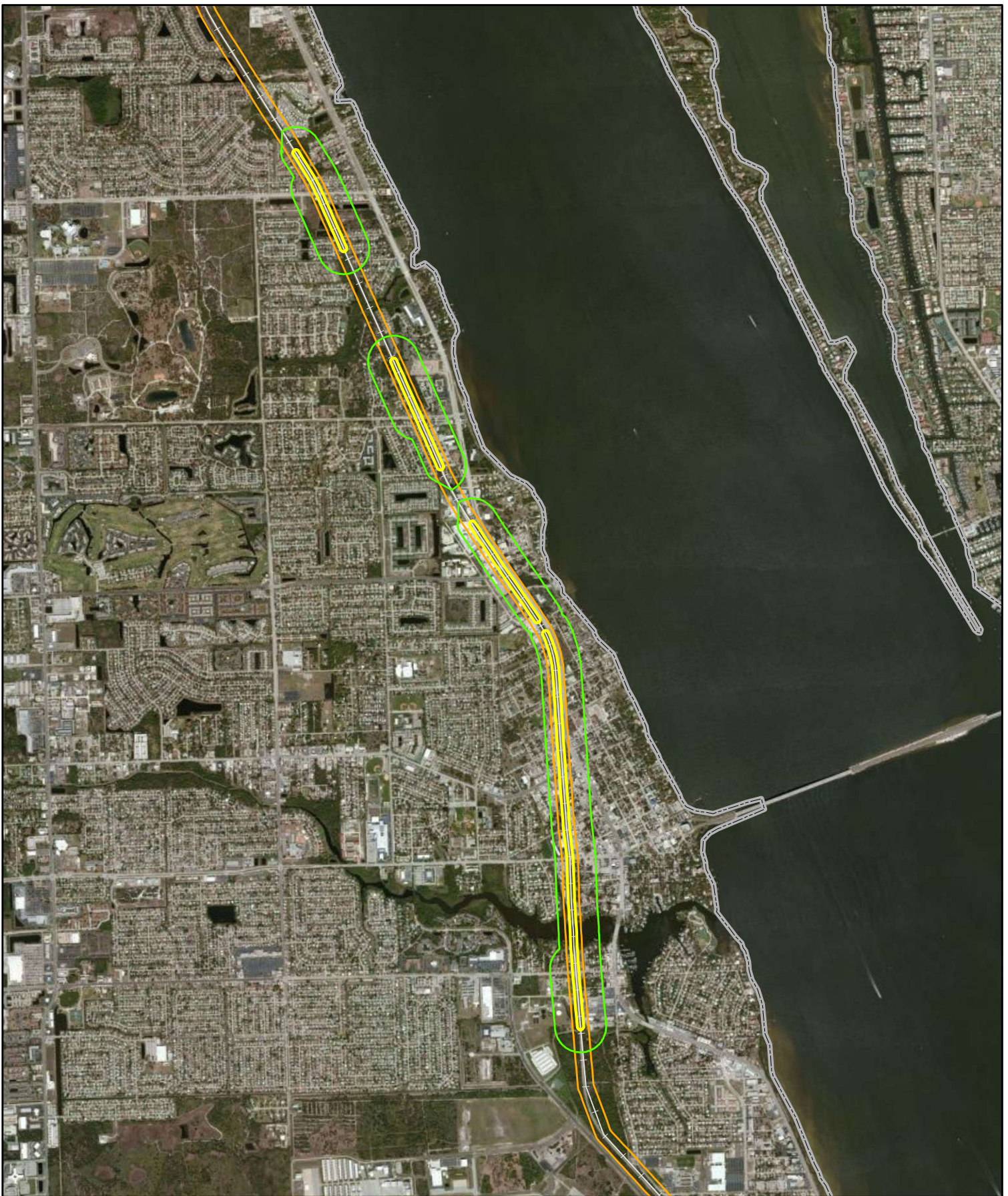
Explanation of Features

- Severe Impact Noise
- Moderate Impact Noise
- Vibration Impact
- County Boundary
- AAF Railway Line

Data Sources: ESRI 2012, FRA 2012, FGDL 2012, AMEC 2013

Brevard County Inventory of Noise and Vibration Impacts		
All Aboard Florida Intercity Passenger Rail Project		
<p>N</p> <p>0 1,500 3,000 Feet</p>	<p>U.S. Department of Transportation Federal Railroad Administration</p>	<p>Figure 5-20</p>

Path: H:\CSX\Floridate_Noise_and_Vibration_Analysis\Task1\MXD\Noise_and_Vibration_Contour_Map_FRA.mxd Project # 6063-12-0212



Explanation of Features

- Severe Impact Noise
- Moderate Impact Noise
- Vibration Impact
- County Boundary
- AAF Railway Line

Data Sources: ESRI 2012, FRA 2012, FGDL 2012, AMEC 2013

Brevard County Inventory of Noise and Vibration Impacts		
All Aboard Florida Intercity Passenger Rail Project		
 0 1,500 3,000 Feet	 U.S. Department of Transportation Federal Railroad Administration	Figure 5-21

Path: H:\CSX\Floridate_Noise_and_Vibration_Analysis\Task1\MXD\Noise_and_Vibration_Contour_Map_FRA.mxd Project # 6063-12-0212



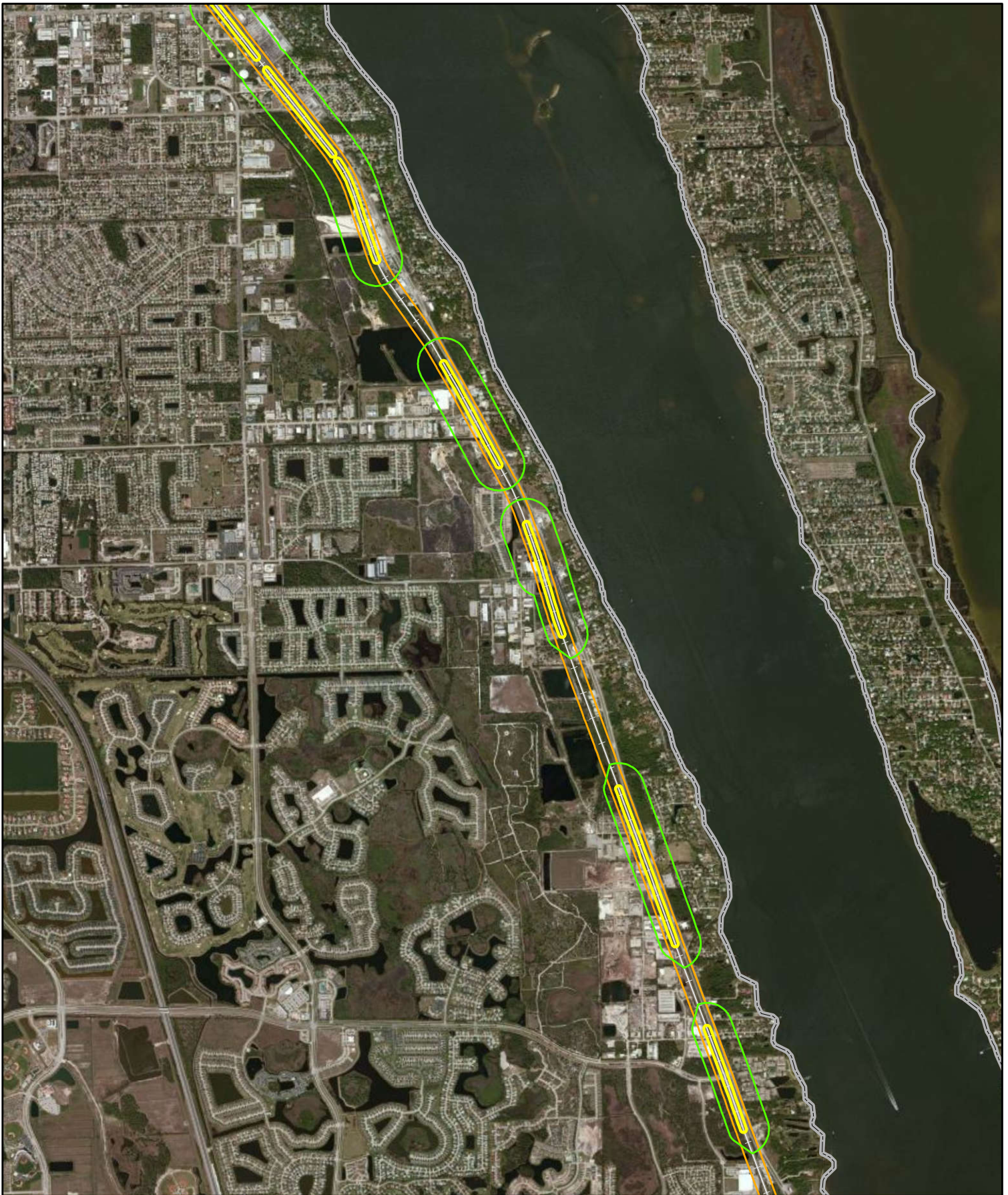
Explanation of Features

- Severe Impact Noise
- Moderate Impact Noise
- Vibration Impact
- County Boundary
- AAF Railway Line

Data Sources: ESRI 2012, FRA 2012, FGDL 2012, AMEC 2013

Brevard County Inventory of Noise and Vibration Impacts		
All Aboard Florida Intercity Passenger Rail Project		
		Figure 5-22

Path: H:\CSXIFloridate_Noise_and_Vibration_Analysis\Task1\MXD\Noise_and_Vibration_Contour_Map_FRA.mxd Project # 6063-12-0212



Explanation of Features

- Severe Impact Noise
- Moderate Impact Noise
- Vibration Impact
- County Boundary
- AAF Railway Line

Data Sources: ESRI 2012, FRA 2012, FGDL 2012, AMEC 2013

Brevard County Inventory of Noise and Vibration Impacts		
All Aboard Florida Intercity Passenger Rail Project		
		Figure 5-23

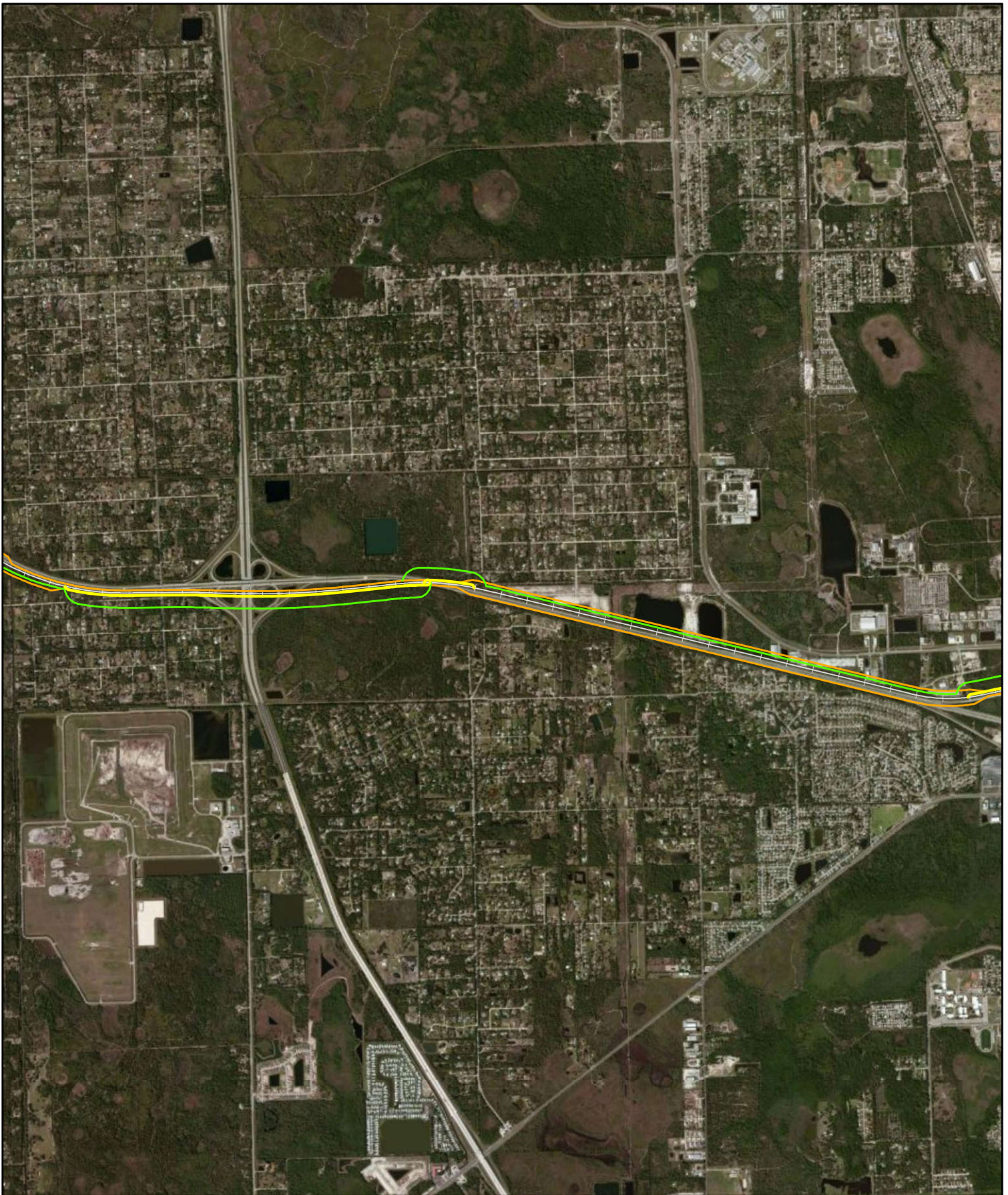
Path: H:\CSXI\Floridate_Noise_and_Vibration_Analysis\Task1\MXD\Noise_and_Vibration_Contour_Map_FRA.mxd Project # 6063-12-0212



Explanation of Features



- Severe Impact Noise
- Moderate Impact Noise
- Vibration Impact
- County Boundary
- AAF Railway Line

Brevard County Inventory of Noise and Vibration Impacts		
All Aboard Florida Intercity Passenger Rail Project		
 	 U.S. Department of Transportation Federal Railroad Administration	Figure 5-24



Explanation of Features

- Severe Impact Noise
- Moderate Impact Noise
- Vibration Impact
- County Boundary
- AAF Railway Line

Brevard County Inventory of Noise and Vibration Impacts		
All Aboard Florida Intercity Passenger Rail Project		
 0 1,500 3,000 Feet	 U.S. Department of Transportation Federal Railroad Administration	Figure 5-25



Explanation of Features

- Severe Impact Noise
- Moderate Impact Noise
- Vibration Impact
- County Boundary
- AAF Railway Line

Data Sources: ESRI 2012, FRA 2012, FGDL 2012, AMEC 2013

Brevard / Orange County Inventory of Noise and Vibration Impacts		
All Aboard Florida Intercity Passenger Rail Project		
 		Figure 5-26

Path: H:\CSX\Floridate_Noise_and_Vibration_Analysis\Task1\MXD\Noise_and_Vibration_Contour_Map_FRA.mxd Project # 6063-12-0212



Explanation of Features

- Severe Impact Noise
- Moderate Impact Noise
- Vibration Impact
- County Boundary
- AAF Railway Line

Data Sources: ESRI 2012, FRA 2012, FGDL 2012, AMEC 2013

Orange County Inventory of Noise and Vibration Impacts		
All Aboard Florida Intercity Passenger Rail Project		
 	 U.S. Department of Transportation Federal Railroad Administration	Figure 5-27

Path: H:\CSX\Floridate_Noise_and_Vibration_Analysis\Task1\MXD\Noise_and_Vibration_Contour_Map_FRA.mxd Project # 6063-12-0212



Explanation of Features

- Severe Impact Noise
- Moderate Impact Noise
- Vibration Impact
- County Boundary
- AAF Railway Line

Data Sources: ESRI 2012, FRA 2012, FGDL 2012, AMEC 2013

Orange County Inventory of Noise and Vibration Impacts		
All Aboard Florida Intercity Passenger Rail Project		
 		Figure 5-28

Path: H:\CSX\Floridate_Noise_and_Vibration_Analysis\Task1\MXD\Noise_and_Vibration_Contour_Map_FRA.mxd Project # 6063-12-0212



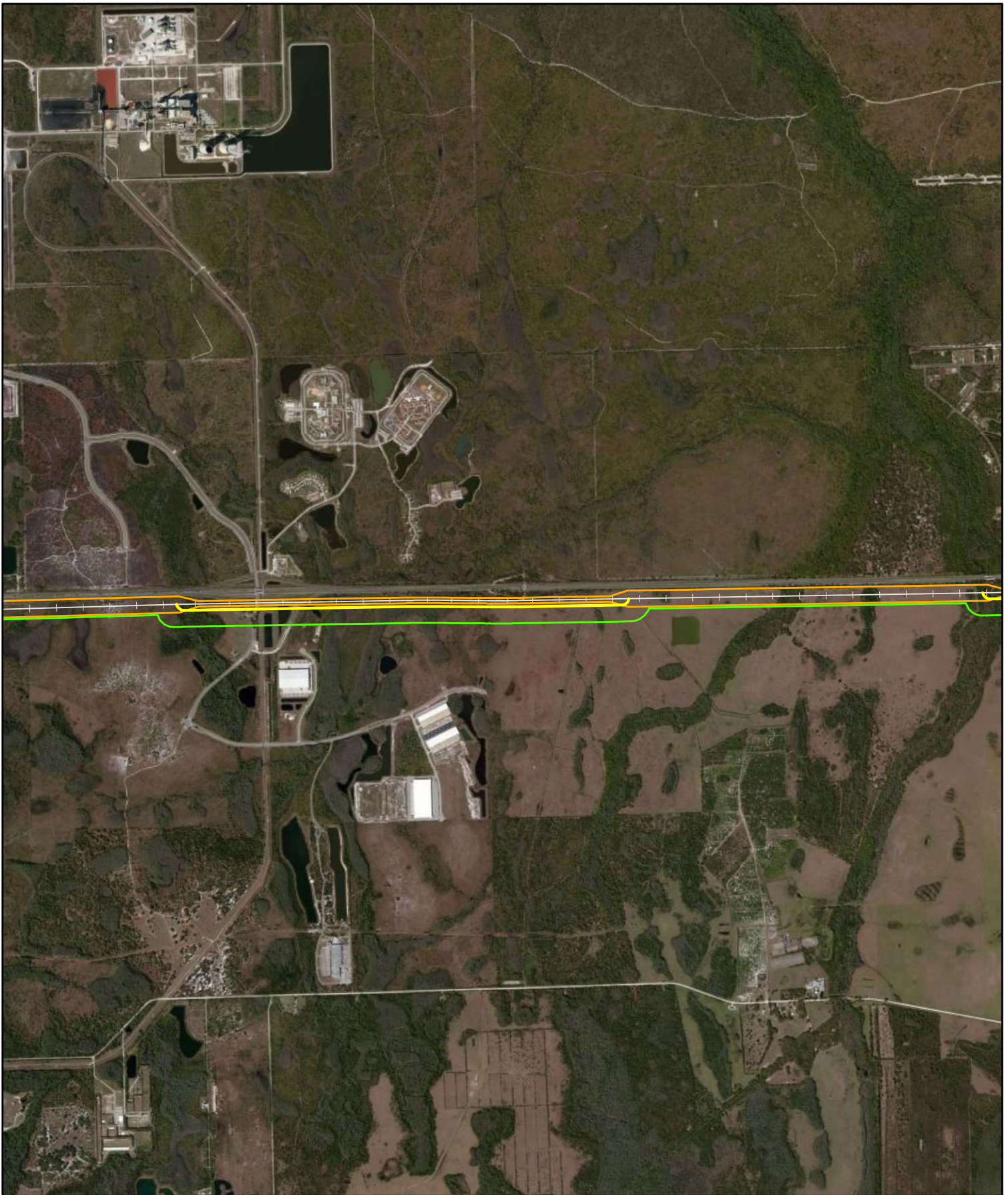
Explanation of Features

- Severe Impact Noise
- Moderate Impact Noise
- Vibration Impact
- County Boundary
- AAF Railway Line

Data Sources: ESRI 2012, FRA 2012, FGDL 2012, AMEC 2013

Orange County Inventory of Noise and Vibration Impacts		
All Aboard Florida Intercity Passenger Rail Project		
 	 U.S. Department of Transportation Federal Railroad Administration	Figure 5-29

Path: H:\CSX\Florida\Noise_and_Vibration_Analysis\Task1\MXD\Noise_and_Vibration_Contour_Map_FRA.mxd Project # 6063-12-0212



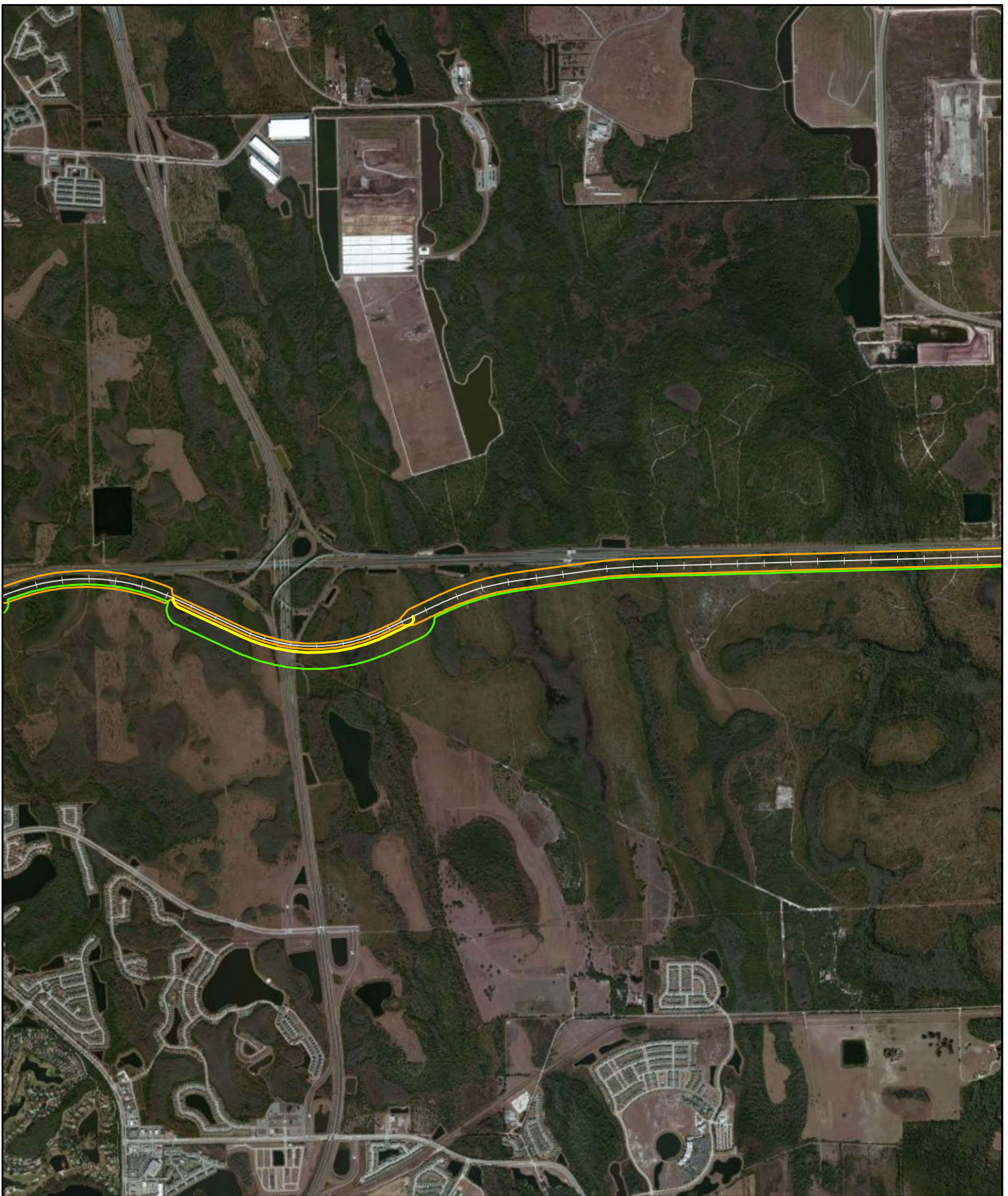
Explanation of Features

- Severe Impact Noise
- Moderate Impact Noise
- Vibration Impact
- County Boundary
- AAF Railway Line

Data Sources: ESRI 2012, FRA 2012, FGDL 2012, AMEC 2013

Orange County Inventory of Noise and Vibration Impacts		
All Aboard Florida Intercity Passenger Rail Project		
 	 U.S. Department of Transportation Federal Railroad Administration	Figure 5-30

Path: H:\CSX\Floridate_Noise_and_Vibration_Analysis\Task1\MXD\Noise_and_Vibration_Contour_Map_FRA.mxd Project # 6063-12-0212



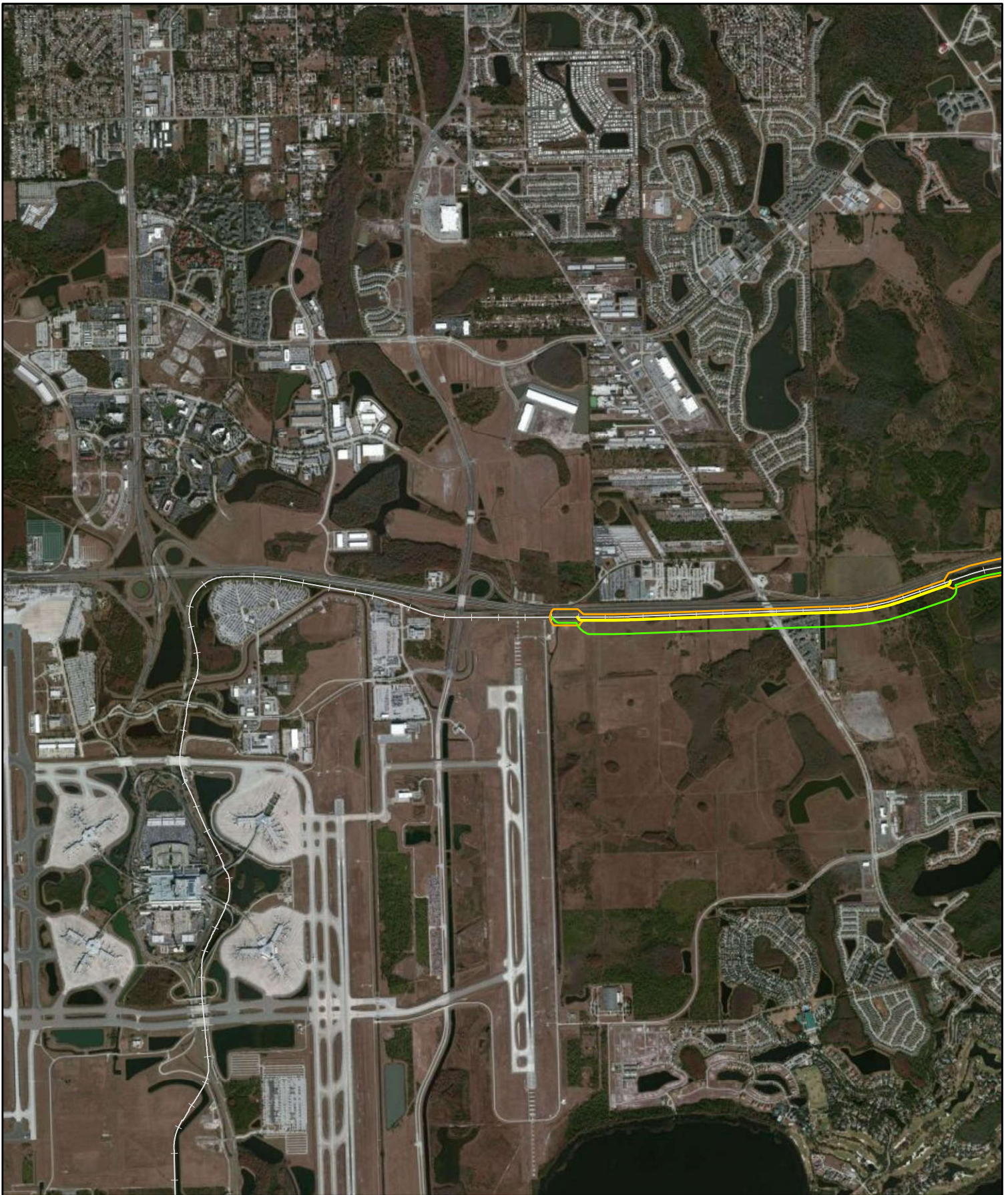
Explanation of Features

- Severe Impact Noise
- Moderate Impact Noise
- Vibration Impact
- County Boundary
- AAF Railway Line

Data Sources: ESRI 2012, FRA 2012, FGDL 2012, AMEC 2013

Orange County Inventory of Noise and Vibration Impacts		
All Aboard Florida Intercity Passenger Rail Project		
 		Figure 5-31

Path: H:\CSX\Floridate_Noise_and_Vibration_Analysis\Task1\MXD\Noise_and_Vibration_Contour_Map_FRA.mxd Project # 6063-12-0212



Explanation of Features

- Severe Impact Noise
- Moderate Impact Noise
- Vibration Impact
- County Boundary
- AAF Railway Line

*Noise and vibration contour for OIA can be found on map 5-33

Orange County Inventory of Noise and Vibration Impacts All Aboard Florida Intercity Passenger Rail Project		
 	 U.S. Department of Transportation Federal Railroad Administration	Figure 5-32