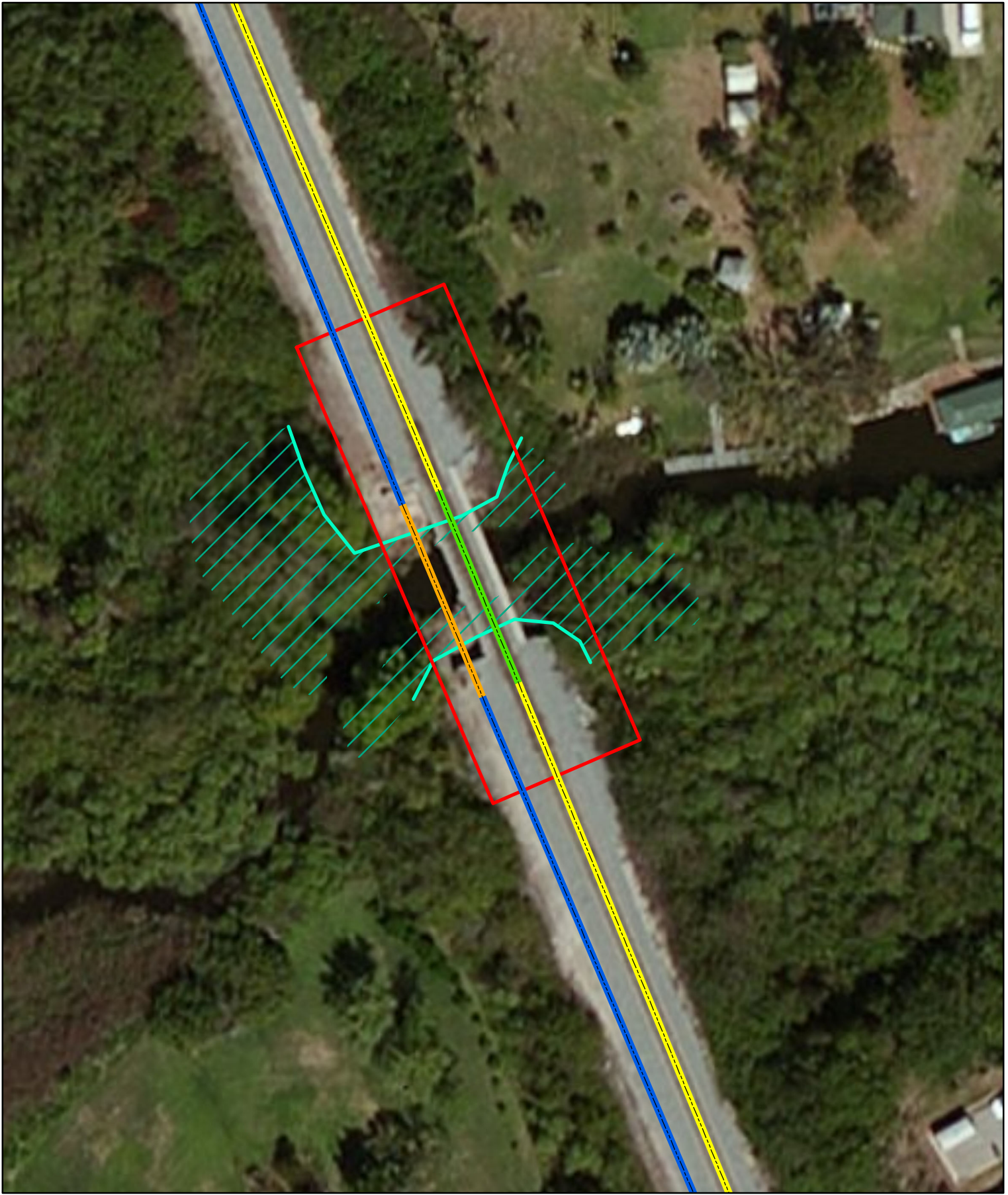


Appendix 5.3.1

Bridge Crossing Maps



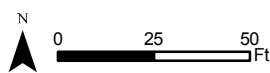
Explanation of Features

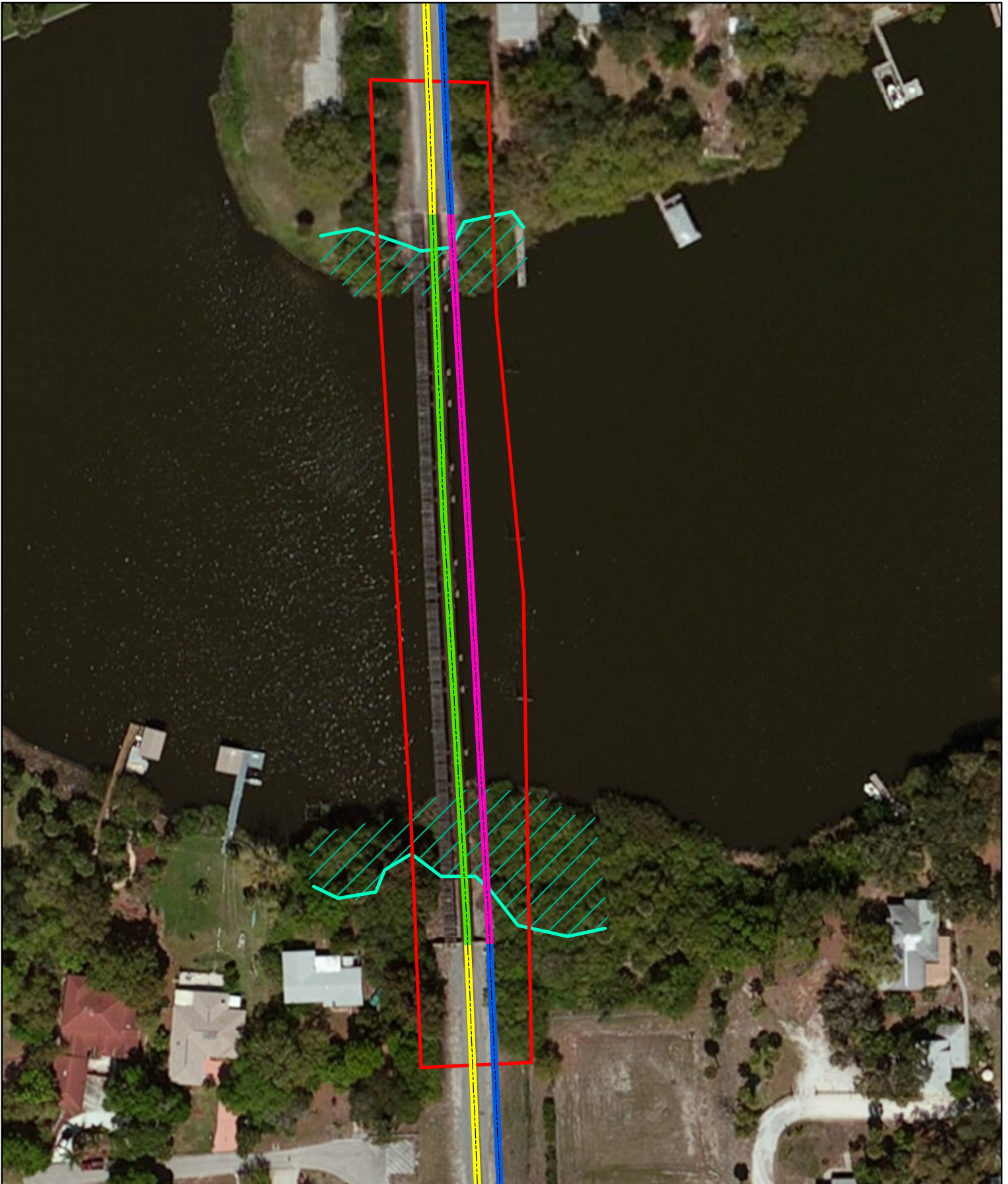
- Existing Bridge
- Existing Alignment
- Proposed New Bridge
- Proposed Alignment
- Bridge Work Area
- Wetland Line
- / / / Wetland

Data Sources: ESRI Bing Maps 2012 Imagery, AAF 2012, AMEC 2012

MP 187.37 Horse Creek Bridge Work Area

All Aboard Florida Intercity Passenger Rail Project



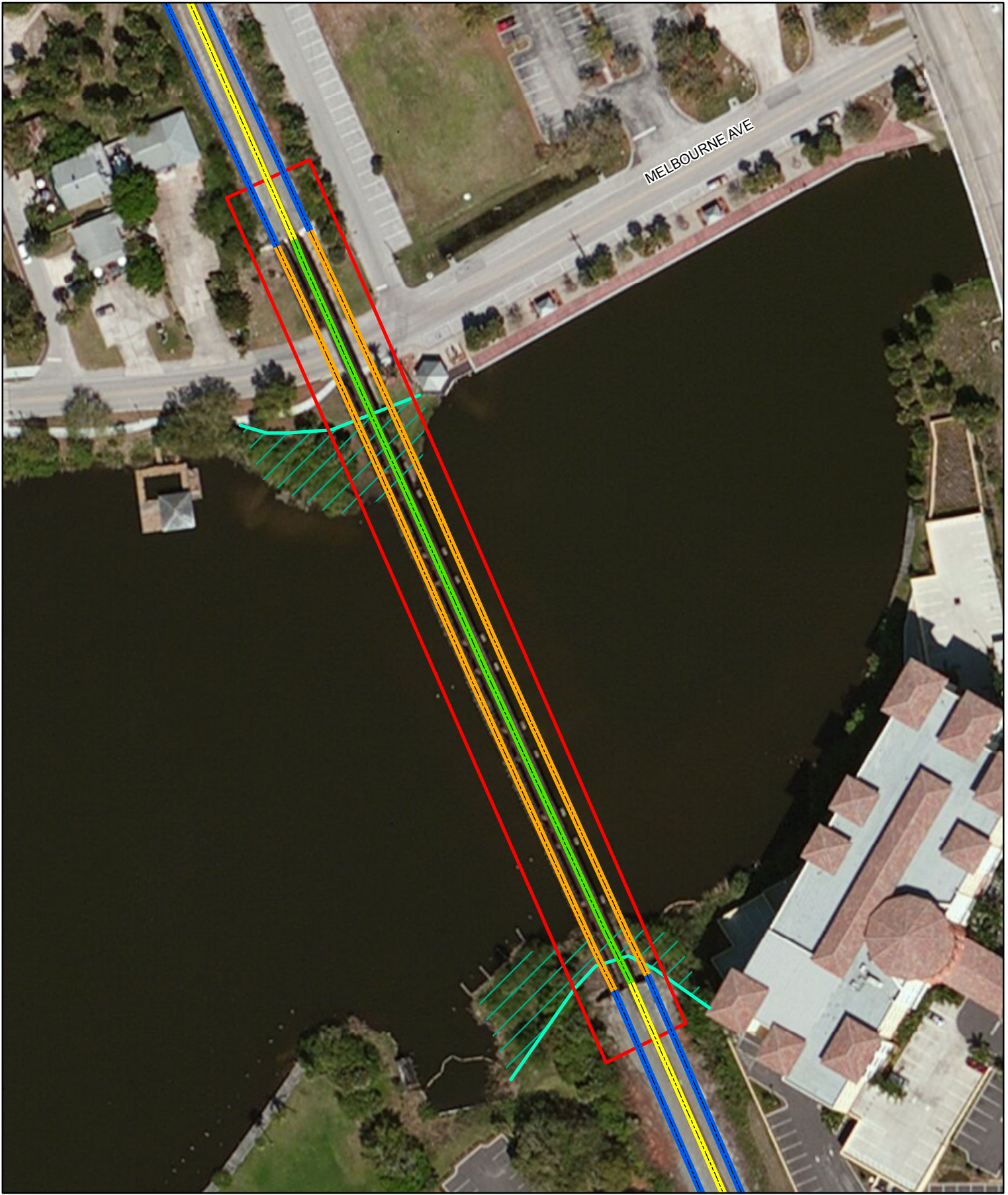


Explanation of Features

- Existing Bridge to be Abandoned
- Existing Alignment
- Proposed Double Track Bridge
- Proposed Double Track Alignment
- Bridge Work Area
- Wetland Line
- / Wetland

Data Sources: ESRI 2012 Imagery, AAF 2012, AMEC 2012

MP 190.47 Eau Gallie River Bridge Work Area	
All Aboard Florida Intercity Passenger Rail Project	
<p style="text-align: center;">N</p>	



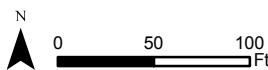
Explanation of Features

- Existing Bridge to be Abandoned
- Existing Alignment
- Proposed New Bridge
- Proposed Alignment
- Bridge Work Area
- Wetland Line
- / / Wetland

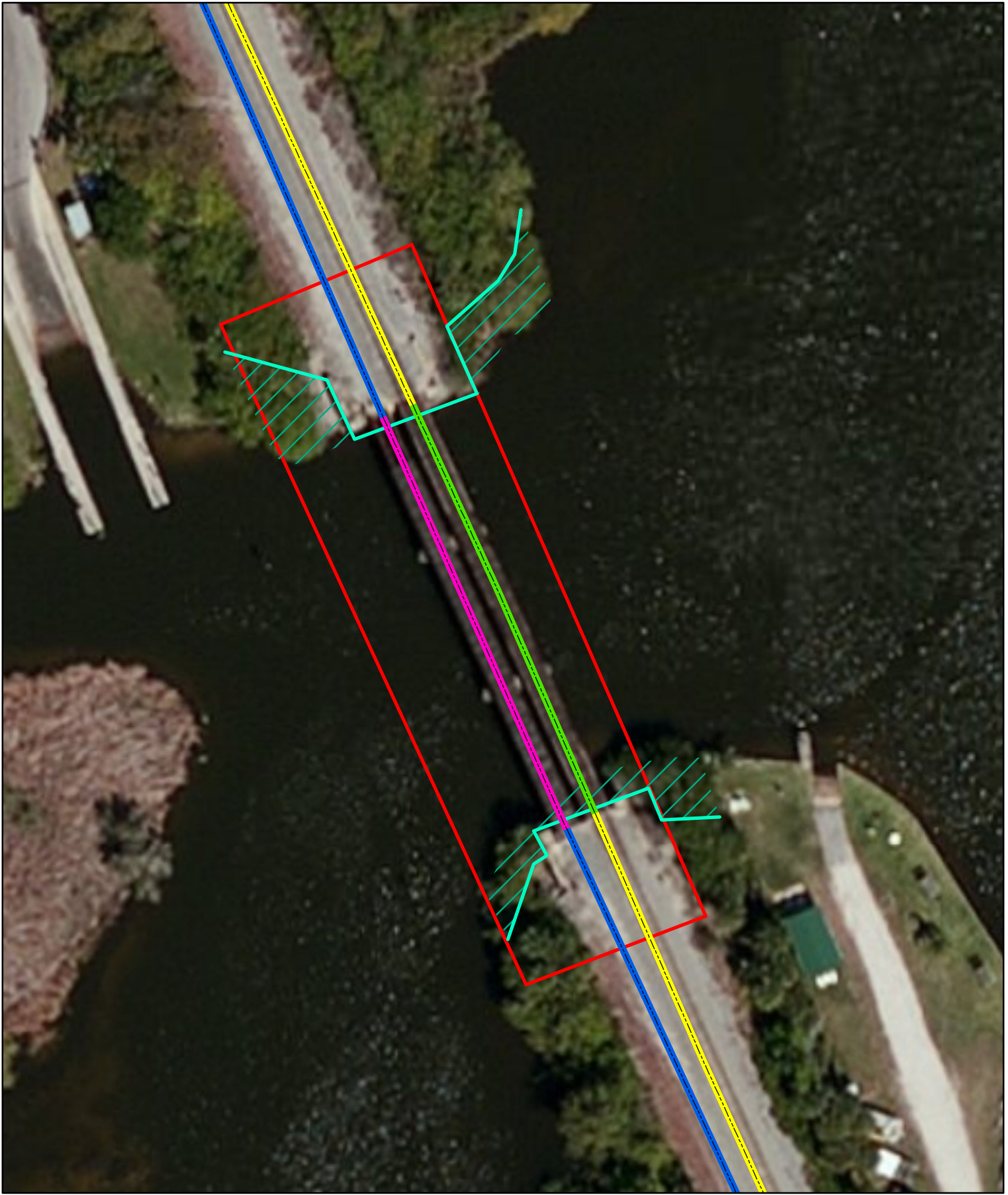
Data Sources: ESRI Bing Maps 2012 Imagery, AAF 2012, AMEC 2012

MP 194.34 Crane Creek Bridge Work Area

All Aboard Florida Intercity Passenger Rail Project



U.S. Department
of Transportation
**Federal Railroad
Administration**



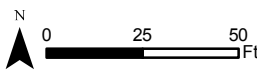
Explanation of Features

- Existing Bridge to be Abandoned
- Existing Alignment
- Proposed Double Track Bridge
- Proposed Double Track Alignment
- Bridge Work Area
- Wetland Line
- / / / Wetland

Data Sources: ESRI Bing Maps 2012 Imagery, AAF 2012, AMEC 2012

MP 197.70 Turkey Creek Bridge Work Area

All Aboard Florida Intercity Passenger Rail Project



U.S. Department
of Transportation
**Federal Railroad
Administration**



Explanation of Features

- Existing Bridge to be Replaced
- Existing Alignment
- Proposed New Bridge
- Proposed Alignment
- Bridge Work Area
- Wetland Line
- / Wetland

Data Sources: ESRI Bing Maps 2012 Imagery, AAF 2012, AMEC 2012

MP 202.59 Goat Creek Bridge Work Area	
All Aboard Florida Intercity Passenger Rail Project	

Path: F:\FEC\FECI_GDB\MXD\GIS\Detailed Bridge Maps\Goat Creek Detailed Map.mxd



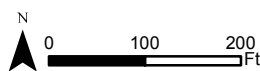
Explanation of Features

- Existing Bridge to be Abandoned
- Existing Alignment
- Proposed Double Track Bridge
- Proposed Double Alignment
- Bridge Work Area
- Wetland Line
- / / Wetland

Data Sources: ESRI Bing Maps 2012 Imagery, AAF 2012, AMEC 2012

MP 212.07 Sebastian River Bridge Work Area

All Aboard Florida Intercity Passenger Rail Project

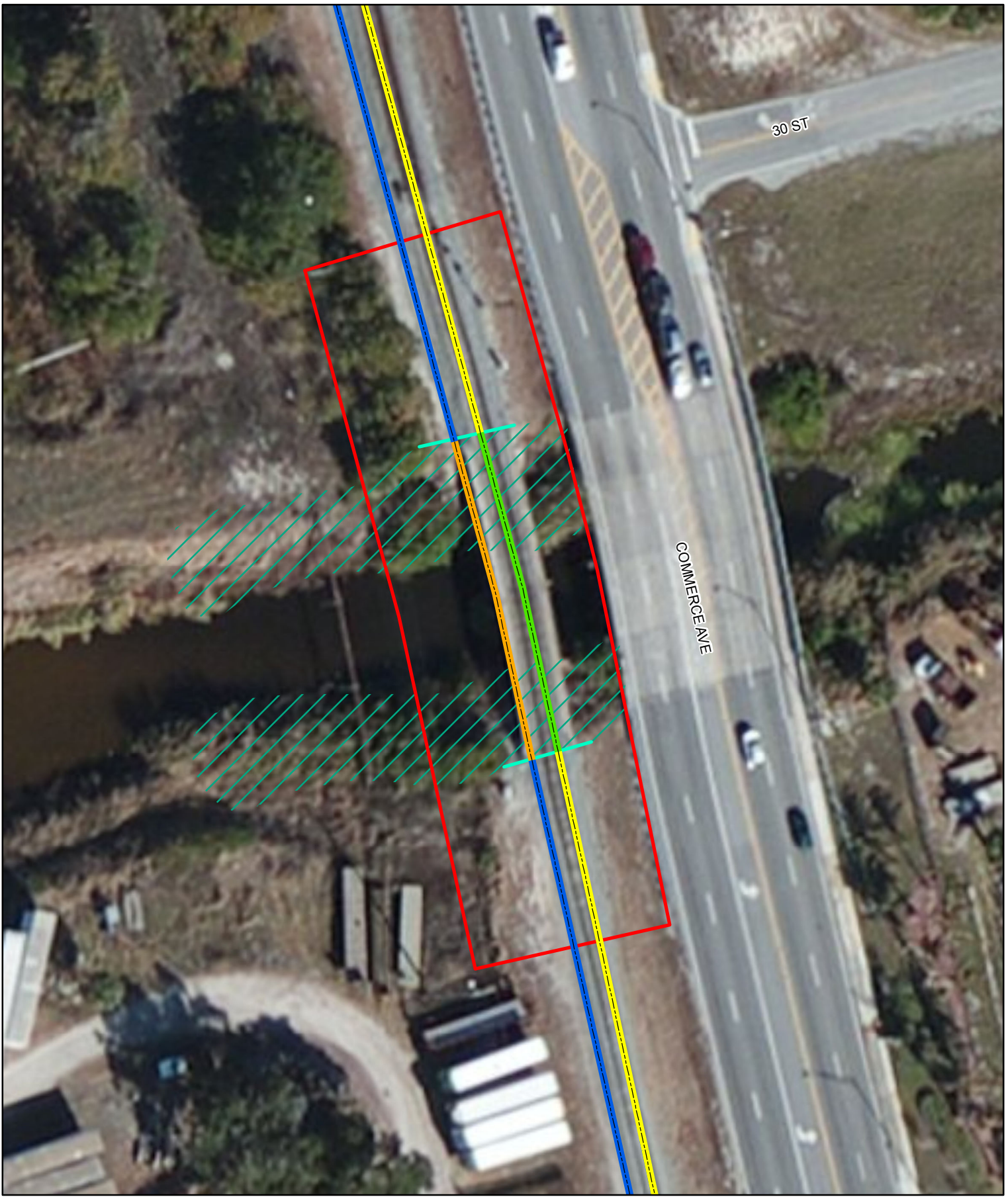




- Explanation of Features**
- Existing Bridge
 - - - Existing Alignment
 - - - Proposed New Bridge
 - - - Proposed Alignment
 - Bridge Work Area
 - Wetland Line
 - / / / Wetland

Data Sources: ESRI Bing Maps 2012 Imagery, AAF 2012, AMEC 2012

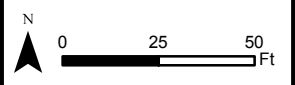
MP 223.70 North Canal Bridge Work Area	
All Aboard Florida Intercity Passenger Rail Project	



- Explanation of Features**
- Existing Bridge
 - Existing Alignment
 - Proposed New Bridge
 - Proposed Alignment
 - Bridge Work Area
 - / / Wetland Line
 - / / Wetland

MP 226.78 Main Canal Bridge Work Area

All Aboard Florida Intercity Passenger Rail Project



Data Sources: ESRI Bing Maps 2012 Imagery, AAF 2012, AMEC 2012

Path: F:\FECH\FECL_GOB\MXD\EIS\Detailed Bridge Maps\Main Canal Detailed Map.mxd



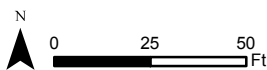
Explanation of Features

- Existing Bridge
- Existing Alignment
- Proposed New Bridge
- Proposed Alignment
- Bridge Work Area
- Wetland Line
- / / / Wetland

Data Sources: ESRI Bing Maps 2012 Imagery, AAF 2012, AMEC 2012

MP 230.03 South Canal Bridge Work Area

All Aboard Florida Intercity Passenger Rail Project



U.S. Department
of Transportation
**Federal Railroad
Administration**



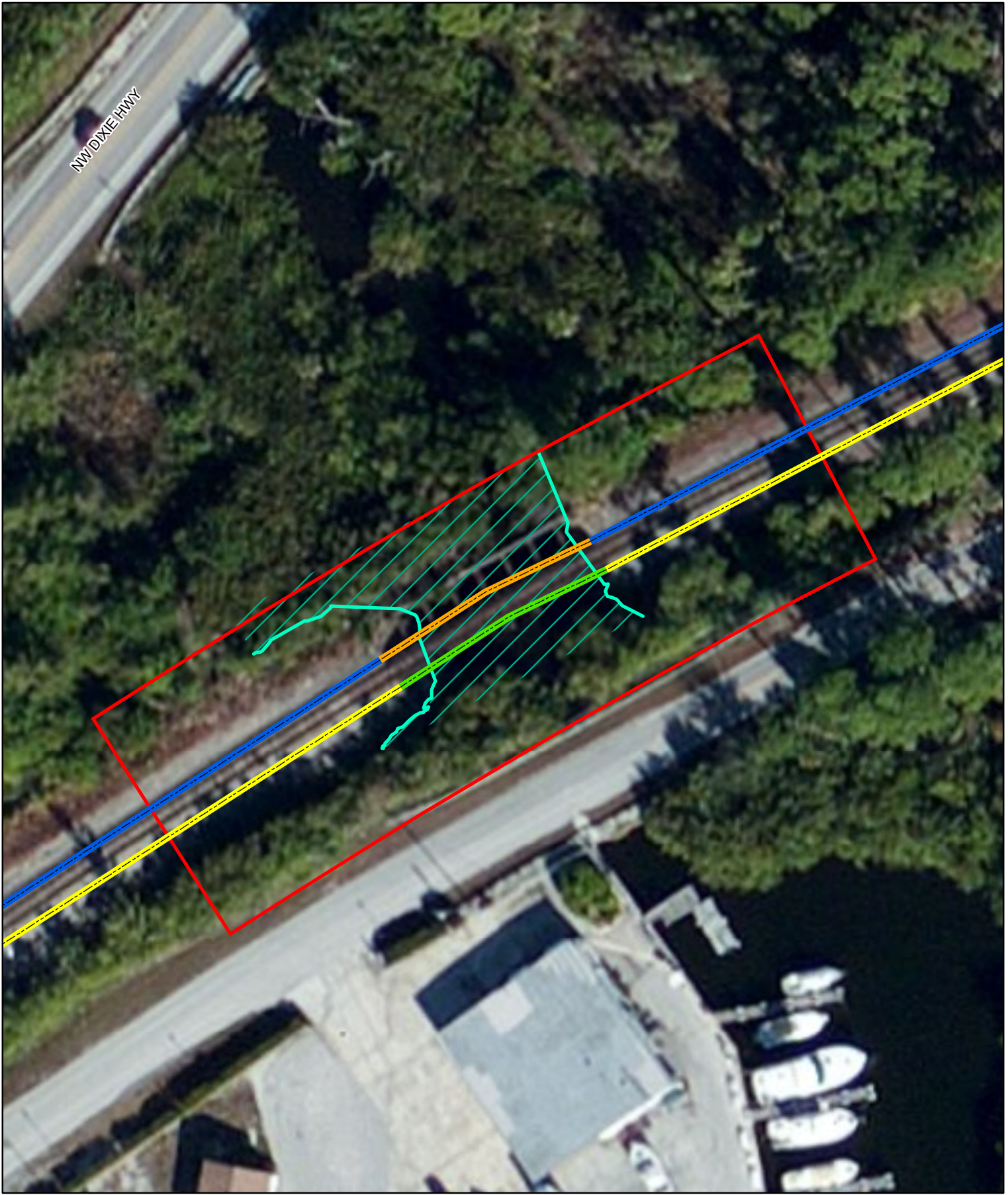
Explanation of Features

- Existing Bridge
- Existing Alignment
- Proposed New Bridge
- Proposed Alignment
- Bridge Work Area
- Wetland Line
- Wetland

MP 241.27 Moores Creek Bridge Work Area	
All Aboard Florida Intercity Passenger Rail Project	
<p>N</p> <p>0 25 50 Ft</p>	<p>U.S. Department of Transportation Federal Railroad Administration</p>

Data Sources: ESRI Bing Maps 2012 Imagery, AAF 2012, AMEC 2012

Path: F:\FEI\FECl_GDB\MXD\EIS\Detailed Bridge Maps\Moores Creek_Detailed Map10.2.mxd



- Explanation of Features**
- Existing Bridge to be Replaced
 - Existing Alignment
 - Proposed New Bridge
 - Proposed Alignment
 - Bridge Work Area
 - Wetland Line
 - / / Wetland

Data Sources: ESRI Bing Maps 2012 Imagery, AAF 2012, AMEC 2012

MP 259.95 Unnamed Creek Bridge Work Area	
All Aboard Florida Intercity Passenger Rail Project	

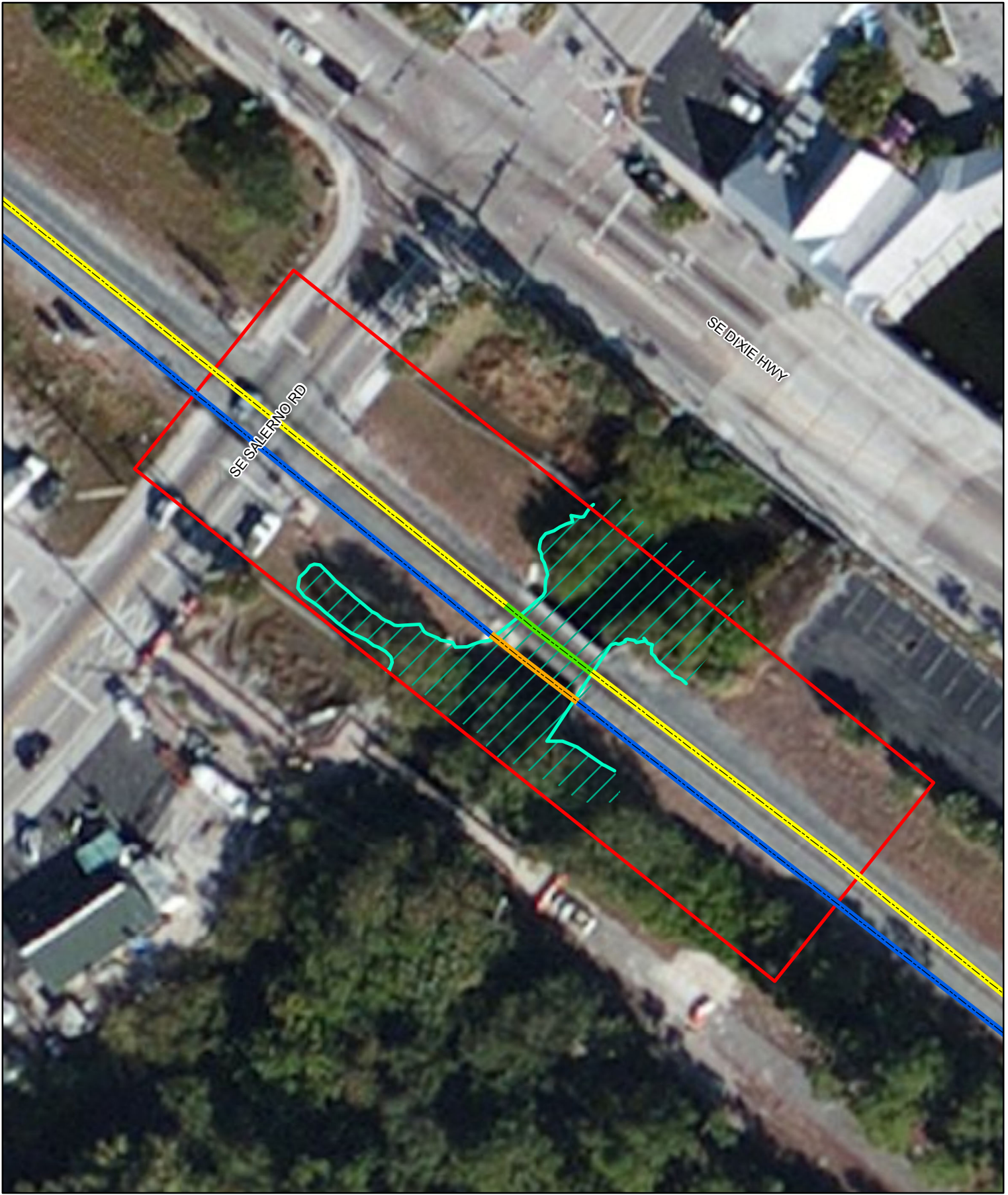
Path: F:\FEC\FECL_GDB\MXD\EIS\Detailed Bridge Maps\Unnamed Creek Detailed Map.mxd



- Explanation of Features**
- Existing Bridge
 - Existing Alignment
 - Proposed New Bridge
 - Proposed Alignment
 - Bridge Work Area
 - Wetland Line
 - / / / Wetland

Data Sources: ESRI Bing Maps 2012 Imagery, AAF 2012, AMEC 2012

MP 266.58 Unnamed Tributary 1 Bridge Work Area	
All Aboard Florida Intercity Passenger Rail Project	



Explanation of Features

- Existing Bridge to be Replaced
- Existing Alignment
- Proposed New Bridge
- Proposed Alignment
- Bridge Work Area
- Wetland Line
- / / / Wetland

MP 266.86 Unnamed Tributary 2 Bridge Work Area	
All Aboard Florida Intercity Passenger Rail Project	
<p>N</p> <p>0 25 50 Ft</p>	<p>U.S. Department of Transportation Federal Railroad Administration</p>

Data Sources: ESRI Bing Maps 2012 Imagery, AAF 2012, AMEC 2012

Path: F:\FEC\FECL_GOB\MXD\EIS\Detailed Bridge Maps\Unnamed Tributary 2 Detailed Map.mxd



Explanation of Features

- Existing Bridge to be Replaced
- Existing Alignment
- Proposed New Bridge
- Proposed Alignment
- Bridge Work Area
- / / / Wetland Line
- / / / Wetland

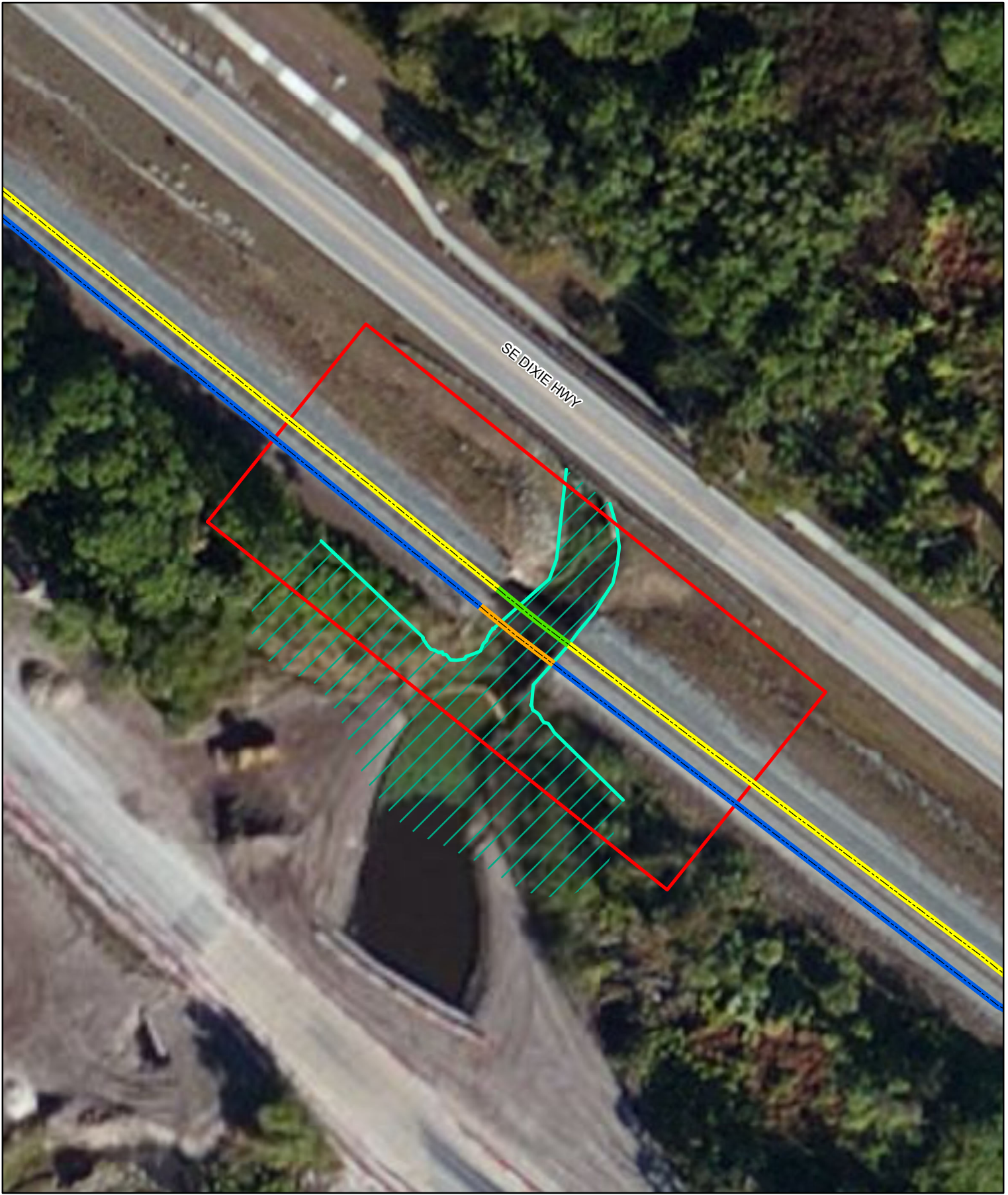
Data Sources: ESRI Bing Maps 2012 Imagery, AAF 2012, AMEC 2012

MP 267.34 Trib to Manatee Creek 1 Bridge Work Area

All Aboard Florida Intercity Passenger Rail Project



Path: F:\FECH\FECL_GDB\MXD\EIS\Detailed Bridge Maps\Tributary to Manatee Creek 1 Detailed Map.mxd



Explanation of Features

- Existing Bridge to be Replaced
- Existing Alignment
- Proposed New Bridge
- Proposed Alignment
- Bridge Work Area
- Wetland Line
- / / Wetland

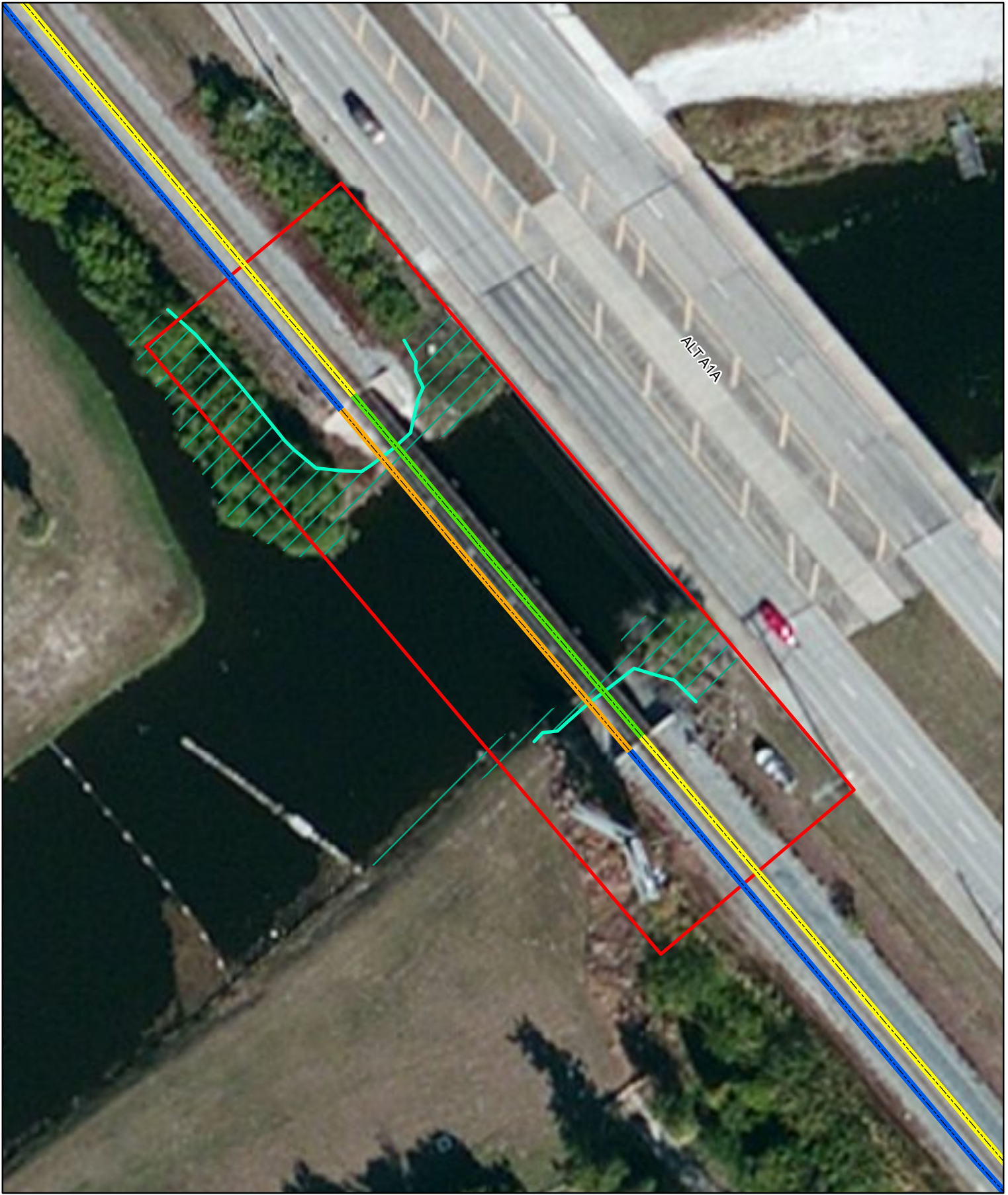
MP 267.70 Trib to Manatee Creek 2 Bridge Work Area

All Aboard Florida Intercity Passenger Rail Project



Data Sources: ESRI Bing Maps 2012 Imagery, AAF 2012, AMEC 2012

Path: F:\FECH\FECL_GDB\MXD\IEIS\Detailed Bridge Maps\Tributary to Manatee Creek 2 Detailed Map.mxd

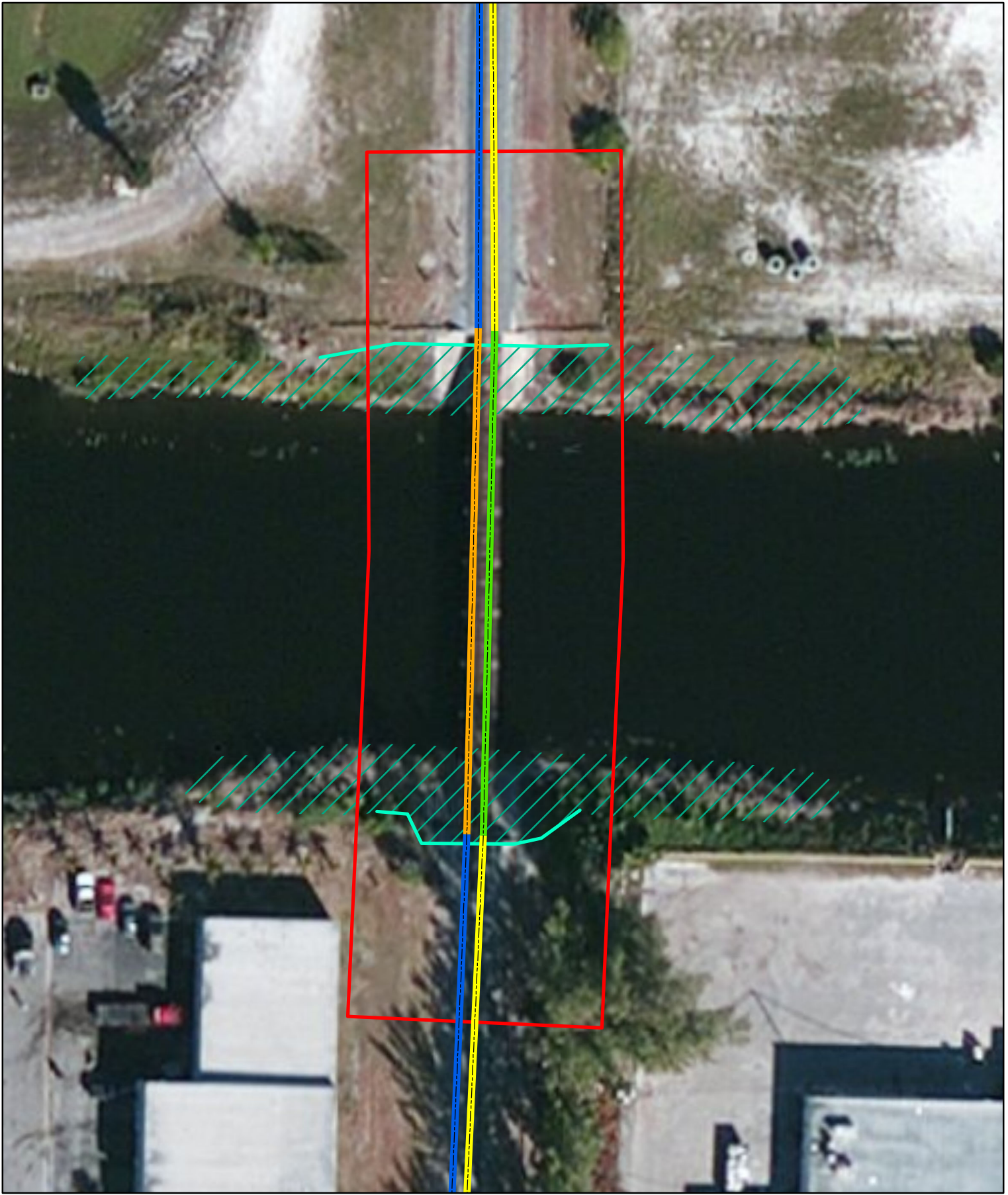


- Explanation of Features**
- Existing Bridge
 - Existing Alignment
 - Proposed New Bridge
 - Proposed Alignment
 - Bridge Work Area
 - Wetland Line
 - / Wetland

Data Sources: ESRI Bing Maps 2012 Imagery, AAF 2012, AMEC 2012

MP 291.86 Earman River Bridge Work Area	
All Aboard Florida Intercity Passenger Rail Project	
<p>N</p> <p>0 25 50 Ft</p>	<p>U.S. Department of Transportation Federal Railroad Administration</p>

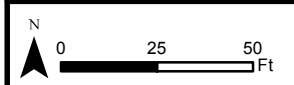
Path: F:\FECI\FECI_GDB\MXD\EIS\Detailed Bridge Maps\Earman Creek Detailed Map.mxd



- Explanation of Features**
- Existing Bridge
 - Existing Alignment
 - Proposed New Bridge
 - Proposed Alignment
 - Bridge Work Area
 - / / / Wetland Line
 - / / / Wetland

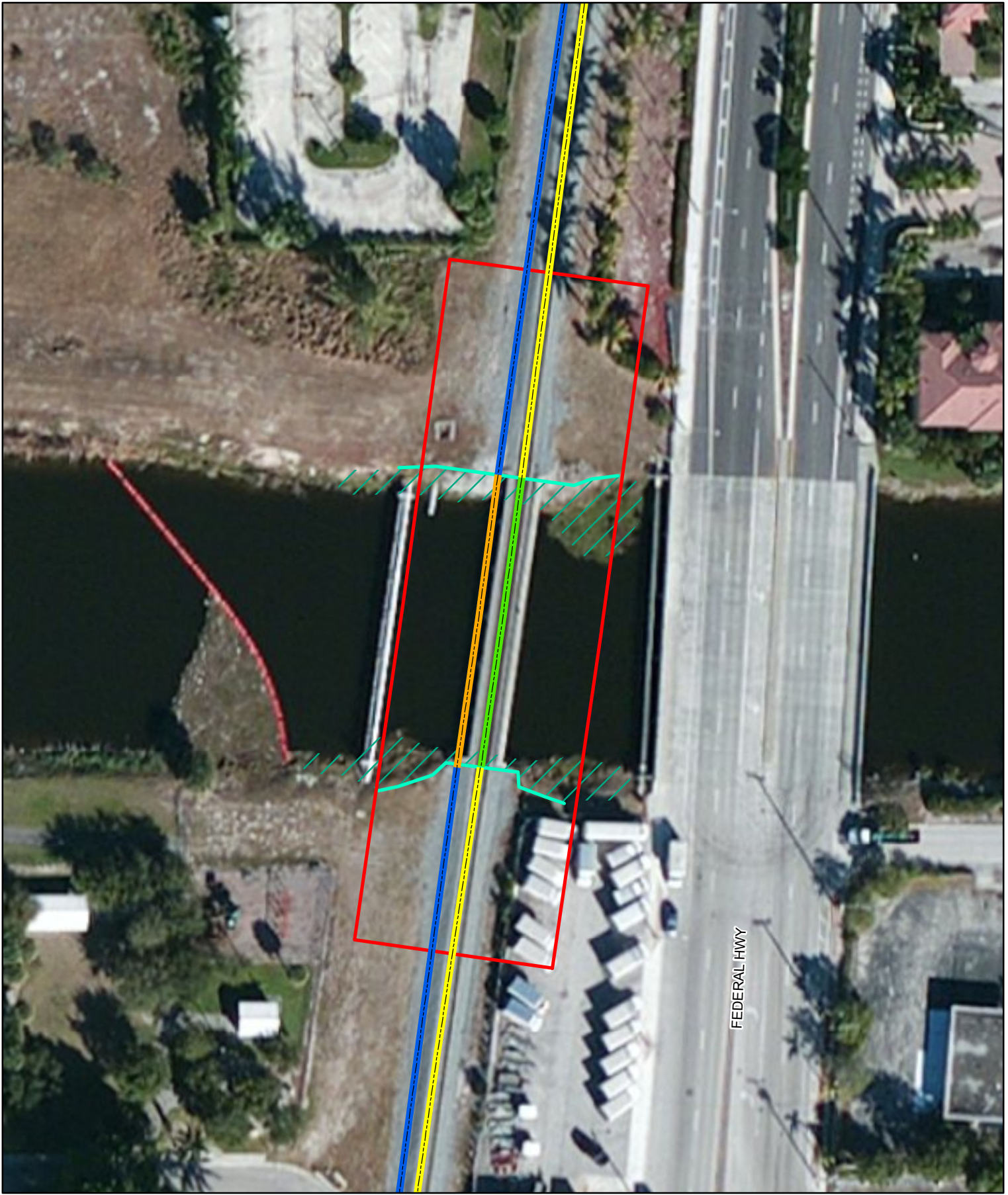
MP 304.05 Canal C-51 Bridge Work Area

All Aboard Florida Intercity Passenger Rail Project



Data Sources: ESRI Bing Maps 2012 Imagery, AAF 2012, AMEC 2012

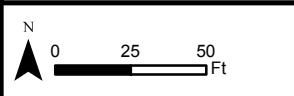
Path: F:\FECH\FECL_GDB\IMXD\EIS\Detailed Bridge Maps\Canal C-51 Detailed Map.mxd



- Explanation of Features**
- Existing Bridge
 - Existing Alignment
 - Proposed New Bridge
 - Proposed Alignment
 - Bridge Work Area
 - Wetland Line
 - / Wetland

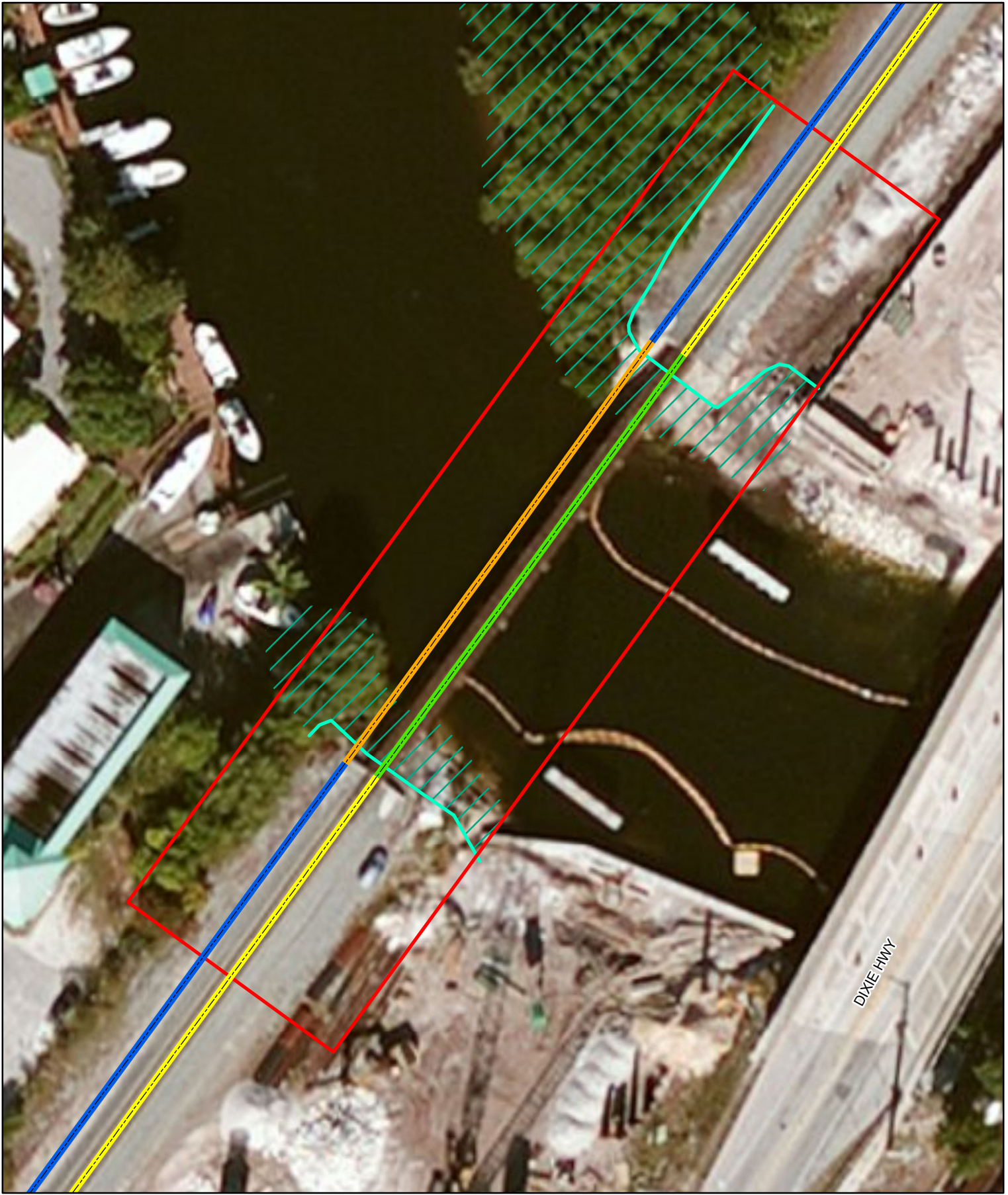
MP 311.45 Boyton Beach Canal Bridge Work Area

All Aboard Florida Intercity Passenger Rail Project



Data Sources: ESRI Bing Maps 2012 Imagery, AAF 2012, AMEC 2012

Path: F:\FECL\FECL_GDB\MXD\EIS\Detailed Bridge Maps\Boyton Creek Detailed Map.mxd



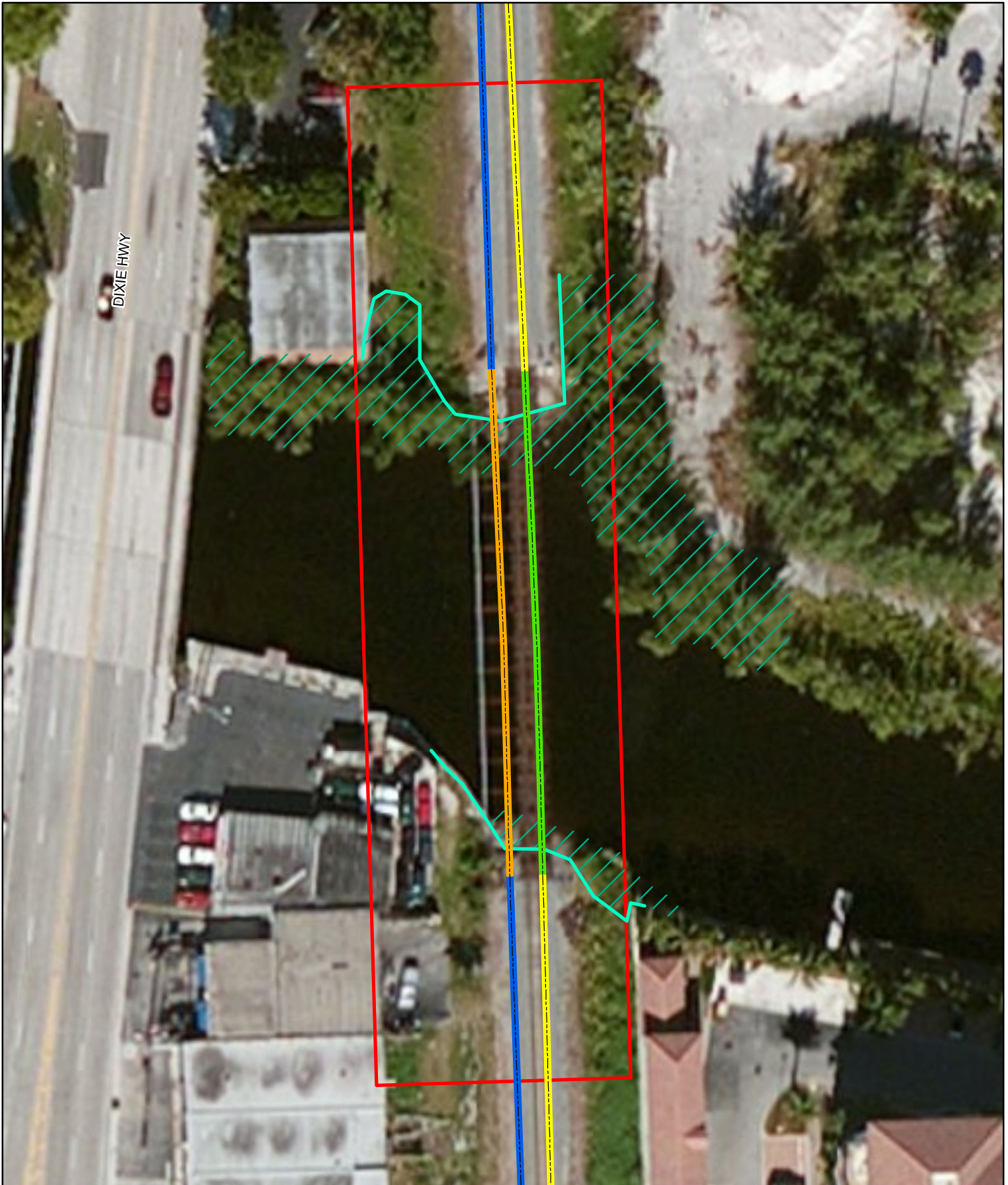
Explanation of Features

- Existing Bridge
- Existing Alignment
- Proposed New Bridge
- Proposed Alignment
- Bridge Work Area
- Wetland Line
- / Wetland

Data Sources: ESRI Bing Maps 2012 Imagery, AAF 2012, AMEC 2012

MP 326.58 Hillsboro Canal Bridge Work Area	
All Aboard Florida Intercity Passenger Rail Project	
<p>N</p> <p>0 25 50 Ft</p>	<p style="font-size: small;">U.S. Department of Transportation Federal Railroad Administration</p>

Path: F:\FEC\FEC1_GDB\MXD\EIS\Detailed Bridge Maps\Hillsboro Canal Detailed Map.mxd



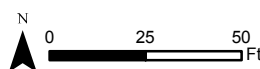
Explanation of Features

- ▬ Existing Bridge to be Replaced
- ▬ Existing Alignment
- ▬ Proposed New Bridge
- ▬ Proposed Alignment
- Bridge Work Area
- ▬ Wetland Line
- ▬ Wetland

Data Sources: ESRI Bing Maps 2012 Imagery, AAF 2012, AMEC 2012

MP 337.91 N. Fork of Middle River Bridge Work Area

All Aboard Florida Intercity Passenger Rail Project



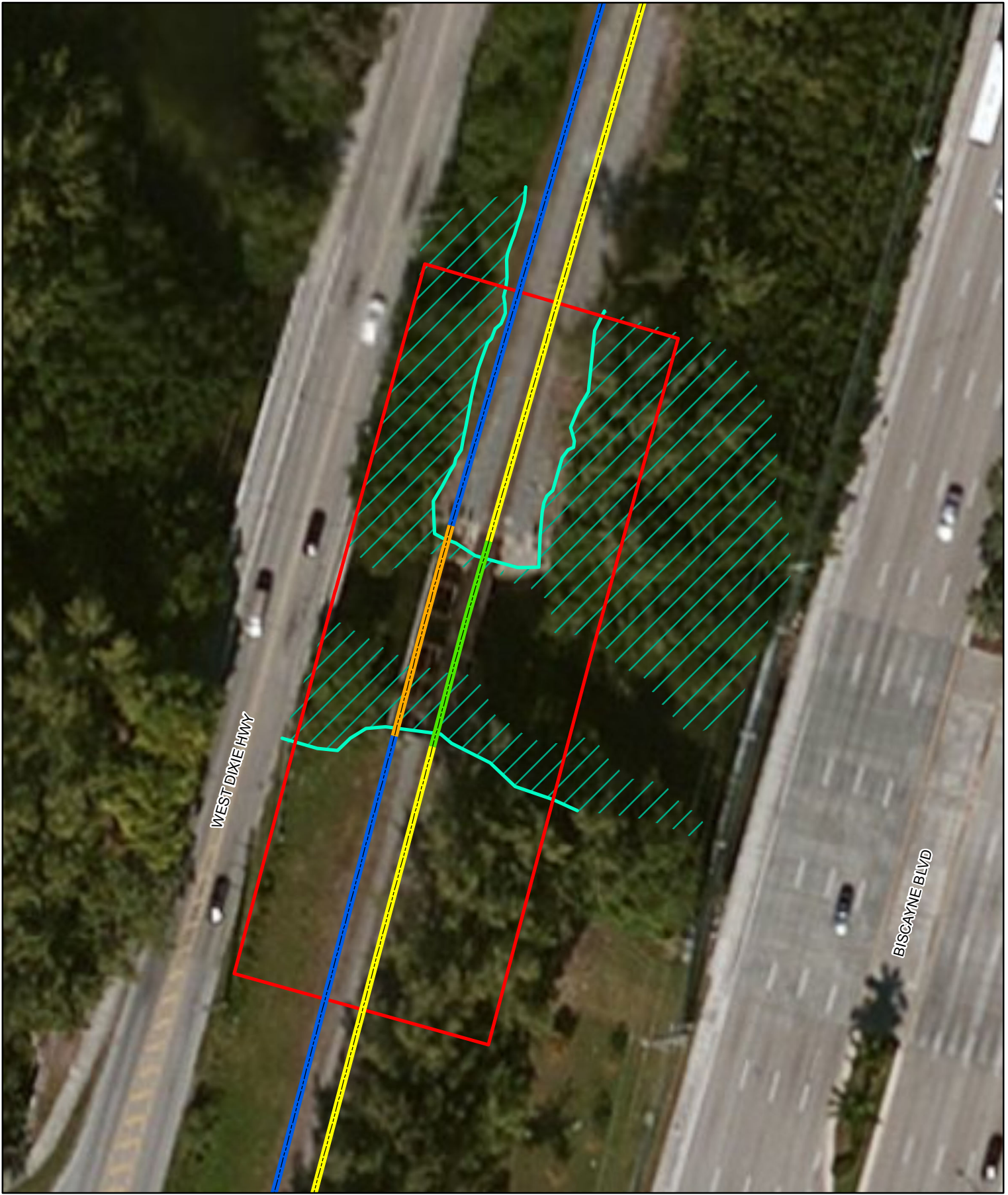


- Explanation of Features**
- Existing Bridge to be Replaced
 - Existing Alignment
 - Proposed New Bridge
 - Proposed Alignment
 - Bridge Work Area
 - Wetland Line
 - / / Wetland

MP 338.52 S. Fork of Middle River Bridge Work Area	
All Aboard Florida Intercity Passenger Rail Project	
<p>N</p> <p>0 25 50 Ft</p>	<p>U.S. Department of Transportation Federal Railroad Administration</p>

Data Sources: ESRI Bing Maps 2012 Imagery, AAF 2012, AMEC 2012

Path: F:\FEC\I\EC1_GDB\MXD\EIS\Detailed Bridge Maps\South Fork Detailed Map.mxd



Explanation of Features

- Existing Bridge to be Replaced
- Existing Alignment
- Proposed New Bridge
- Proposed Alignment
- Bridge Work Area
- Wetland Line
- / / Wetland

MP 353.74 Oleta River Bridge Work Area	
All Aboard Florida Intercity Passenger Rail Project	

Data Sources: ESRI Bing Maps 2012 Imagery, AAF 2012, AMEC 2012

Path: F:\FEC\I\EC1_GDB\MXD\EIS\Detailed Bridge Maps\Oleta River Detailed Map.mxd



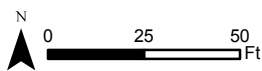
Explanation of Features

- Existing Bridge
- Existing Alignment
- Proposed New Bridge
- Proposed Alignment
- Bridge Work Area
- Wetland Line
- Wetland

Data Sources: ESRI Bing Maps 2012 Imagery, AAF 2012, AMEC 2012

MP 356.53 Arch Creek Bridge Work Area

All Aboard Florida Intercity Passenger Rail Project



U.S. Department
of Transportation
**Federal Railroad
Administration**