



T.O. 5 MIDWEST

Indiana Gateway Project

(Series of Track Construction Projects)

Brief description:

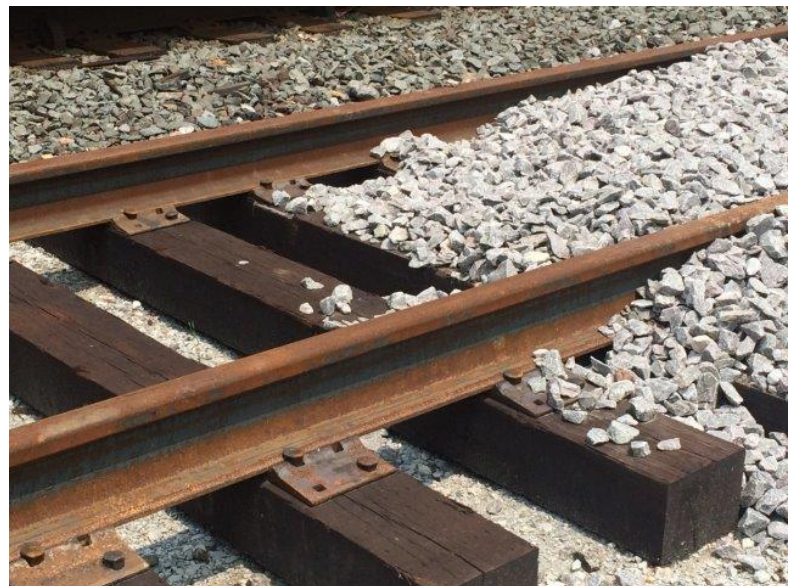
This project consists of the final design and construction of eight subprojects. Seven of the subprojects are located on Norfolk Southern Railway Company's (NS) Chicago Line between Porter, Indiana and the Indiana/Illinois border. One subproject is located on Amtrak's Michigan Line near Porter, Indiana. These projects include the relocation, reconfiguration, and addition of high-speed crossovers and related signal system improvements, minor rail line additions (at two locations comprising the lengthening and rehabilitation of existing sidings) and the creation of a new parallel passing siding. These projects are designed to provide flexibility and fluidity and will benefit multiple Amtrak services, including the Wolverine, Bluewater, Pere Marquette, Lake Shore Limited, and the Capitol Limited. Estimated costs of the entire project are \$71 million and completion is anticipated in late 2016.

Interesting aspect:

This project is located one of NS's most congested subdivisions, with 90 freight trains and 14 Amtrak passenger trains daily. Finding construction windows has been very challenging but NS is committed to the completion of the project before 2017.

How this project supports the larger rail network:

The completion of the project will reduce congestion and improve travel time and reliability for passenger service. In addition, the Development Rights Agreement signed with NS makes available property rights in the vicinity of the NS "Sugar Track" for future development for intercity passenger use.



T.O. 5 Midwest

CONTACTS

Wynne Davis

FRA Regional Manager / Project Manager
202-493-6441
Wynne.davis@dot.gov

Matthew Lyons

Volpe TOCOR
Tel 617-494-2254
Matthew.Lyons@dot.gov

Andrew Peternith

FRA Grant Manager
202-493-1320
Andrew.peternithg@dot.gov

Peter Schwartz

FRA Planner
202-493-6360
Peter.schwartz@dot.gov

Andrea Martin

FRA Environmental Protection Specialist
202-493-6201
Andrea.Martin@dot.gov

Dick Cogswell

FRA Engineer
202-493-6388
Richard.cogswell@dot.gov

Zeb Schorr

FRA Attorney
202-493-6072
Zeb.schorr@dot.gov

LIST OF PROJECTS

IL DOT

- Chicago to St. Louis Corridor Investment Plan – Corridor Program
- Midwest Next Gen Passenger Rail Equipment

City of Alton, IL

- Alton Regional Multimodal Station – FD Construction

City of Springfield, IL

- Chicago to St. Louis HSR, Carpenter Street – FD Construction

MI DOT

- Dearborn- Kalamazoo Corridor Acquisition and Improvements – Corridor Program
- Dearborn to Kalamazoo: track rehabilitation and signal improvements – Corridor Program, PE NEPA, FD Construction
- Dearborn Intermodal Facility – FD Construction
- Troy Multimodal Transit Facility – FD Construction
- West Detroit Rail Improvements – FD Construction
- Ann Arbor Station – PE NEPA
- Chicago Hub (Chicago-Detroit/Pontiac) HSR Corridor: Kalamazoo to Dearborn Infrastructure Improvements – FD Construction
- Chicago to Detroit/Pontiac Corridor Investment Plan – Planning SDP

IL DOT

- Chicago-to-Iowa City: Chicago-Quad Cities Expansion Program - Corridor Program
- CREATE 1 – Englewood Flyover Project – FD Construction

IA DOT

- Chicago – Iowa City / New Corridor Service – Corridor Program
- IA State Rail Plan – Statewide Travel Demand Model for Rail – Planning

IN DOT

- Indiana Gateway Project – FD Construction
- White River Freight Railroad Bridge Replacement – FD Construction

MN DOT

- Northern Lights Express – PE NEPA
- Minneapolis St Paul MN to Milwaukee HSR Corridor, Tier 1 EIS and SDP