

# **Benefits of Working with Third-Party Mitigation Providers to Streamline Project Delivery**

Kris Hoellen

The Conservation Fund

October 14, 2015

# *Our Mission*

The Conservation Fund forges partnerships to conserve America's legacy of land and water resources. Through land acquisition, community and economic development, and training and education, the Fund and its partners demonstrate balanced conservation solutions that emphasize the integration of economic and environmental goals.



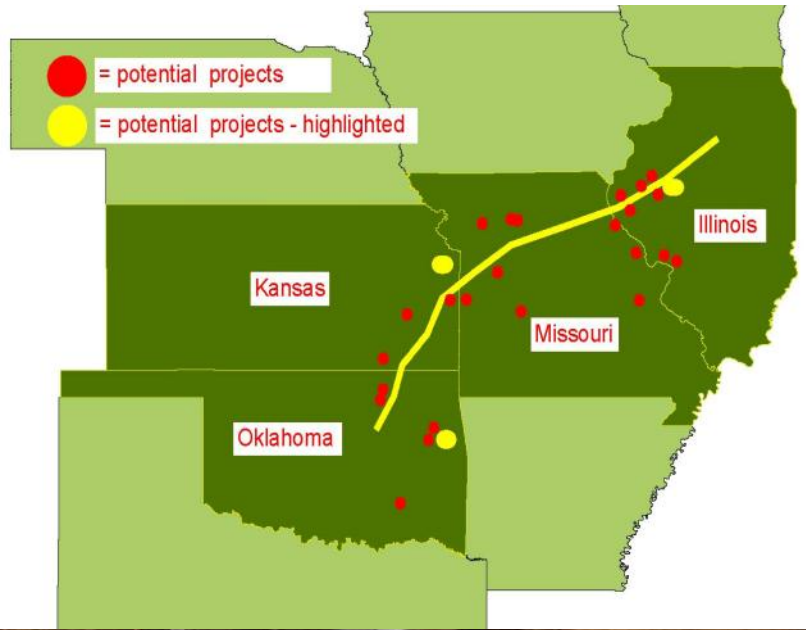
# Land and Water Conservation

**Wildlife  
Habitat**



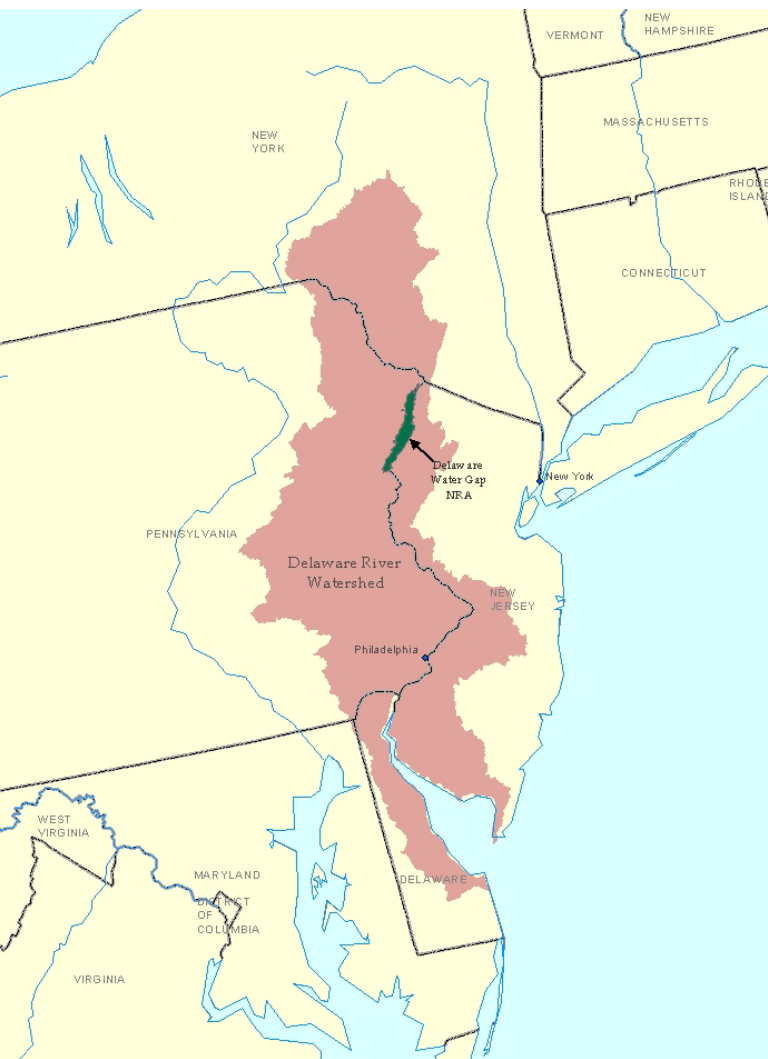
**Rivers &  
Watersheds**







# Middle Delaware River Resources



- National Park Service (PA/NJ)
  - Delaware Water Gap NRA
  - Mid. Delaware National Scenic River
  - Appalachian National Scenic Trail
  
- Millions of visitors (NYC/Philly)
  - Canoeing, camping, hiking, hunting
  
- 500,000 acre network of conserved lands
  - Cherry Valley NWR
  - State parks and forests (PA and NJ)
  - TNC Preserves

# Current Line



# Proposed Line

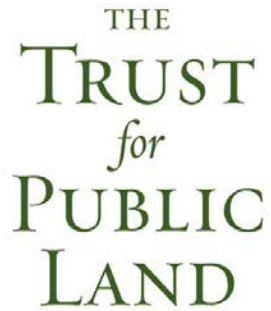




# Mitigation Plan



- TCF administer a mitigation fund and acquire acceptable parcels:
- NPS inholdings, edgeholdings
- PA wildlife corridors-state
- Appalachian Trail buffer
- Cherry Valley NWR inholdings
- State acquisitions (PA / NJ)
- Non-profit partnerships (TNC)



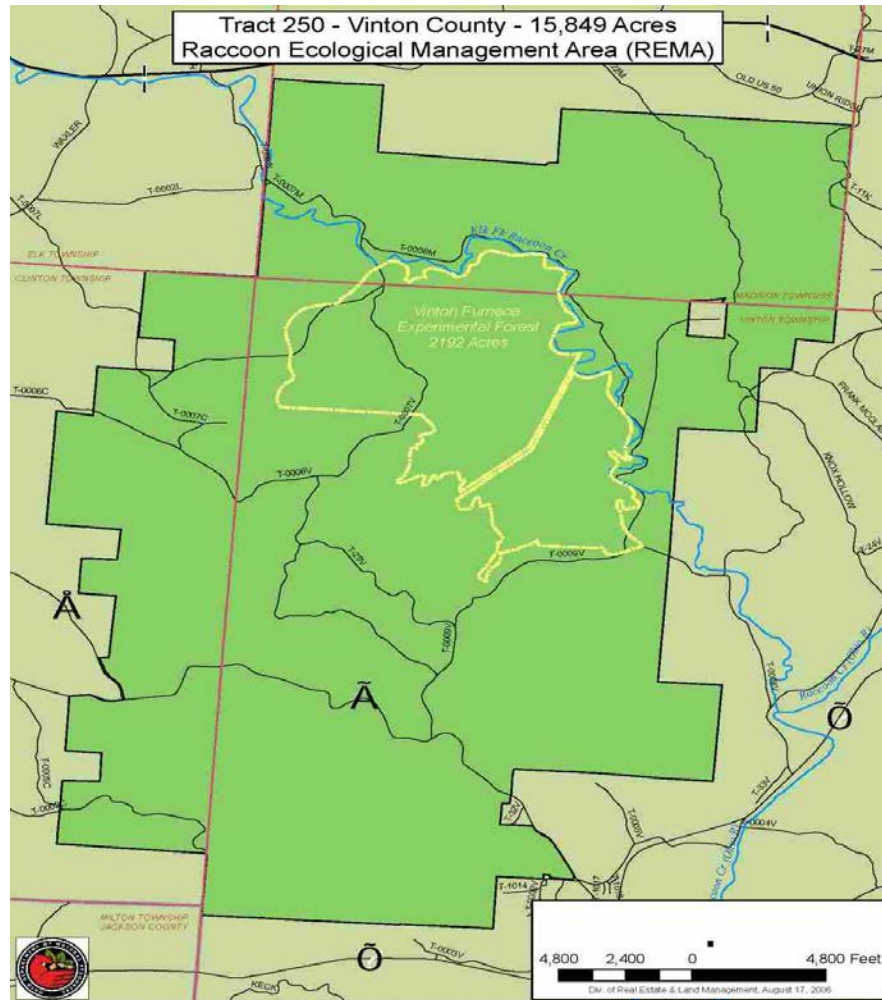
- Federal -- NPS, FWS and USFS
- TNC – PA and NJ chapters
- Trust for Public Land
- Commonwealth of PA – DCNR
- State of New Jersey – DEP
- Local land trusts/organizations
  - Ridge & Valley Conservancy, NJ
  - Conservation Resources Inc. , NJ
  - Land Conservancy of NJ
  - Open Space Institute
  - NJ Audubon Society

## Kern River



- 740 acres of Desert Tortoise habitat purchased
- 18 months saved, mitigation costs approximately half of original estimate
- Capitalized on long-standing relationships with regulatory agencies.

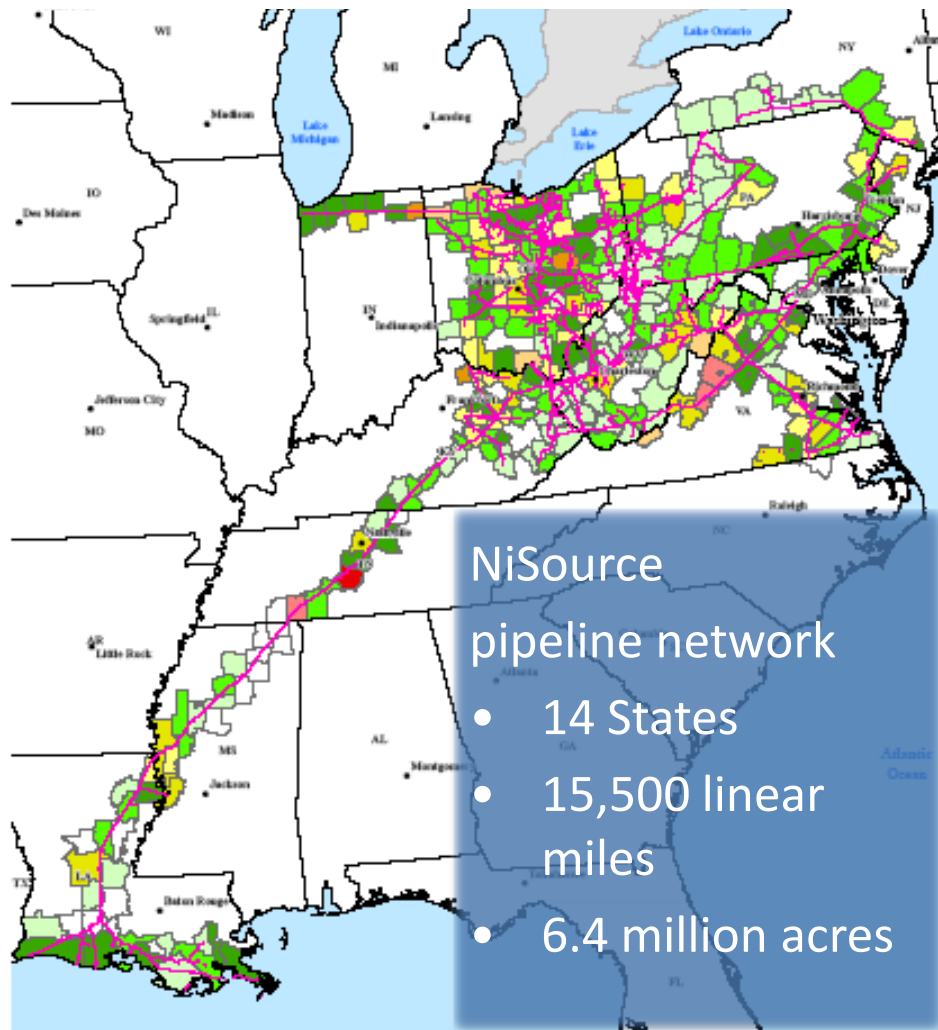
# Rockies Express



- 1700 mile pipeline from Colorado to Ohio;
- Established \$4 million mitigation fund to compensate for expected migratory bird habitat loss along a 639 mile stretch of pipeline;
- Administered by TCF -- issue RFPs, provide due diligence & make grants for restoration/acquisition of key MB habitat in 4 states.
- REMA/Vinton Furnace project combined more than \$2M of REX East with AEP SEP dollars to complete timely acquisition of an irreplaceable forest property.
- Leveraged a footprint of habitat conserved @ 7 times greater than that disturbed.

## GI Network, Decision Trees & Optimization

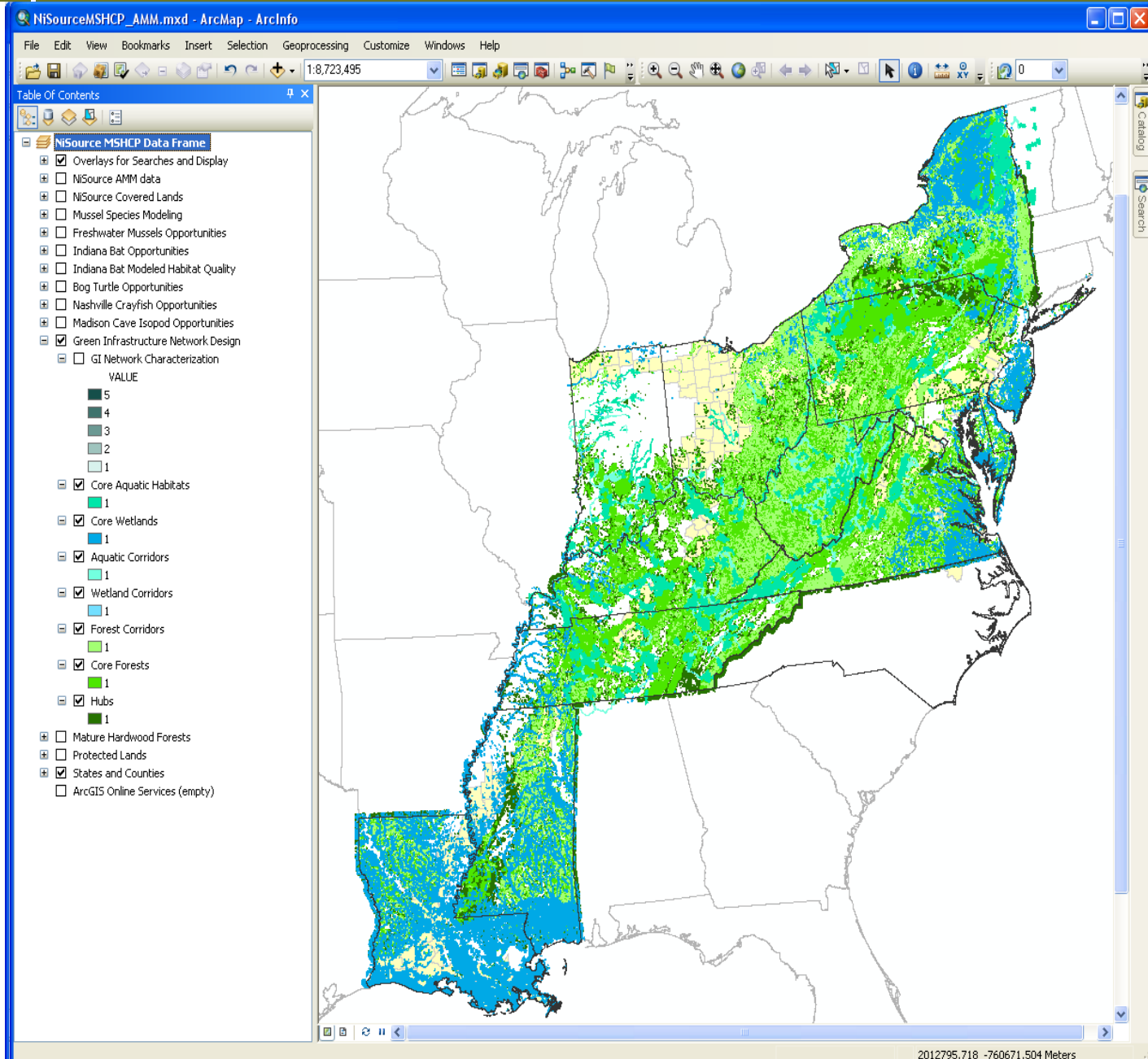
- Natural gas transmission company
- Operation and maintenance activities impact endangered species
- Enforce Endangered Species Act
- Streamline project review while enhancing species protection



# Mitigation Needs/Opportunities

## NiSource MSHCP

- 13 State focus groups
- GI Network Design Methods
- Decision Tree Criteria
- Mitigation Opportunities
- Mitigation Project GIS Database



- **Pre-Injury**
  - Better Cost/Budget Estimating for mitigation;
  - Potential time savings
  - Increased likelihood of permits being issued, decreased threat of litigation/ameliorate public opposition and/or garner stakeholder support
- **Post-Injury**
  - Time Savings, opportunity to leverage funds, increased potential to produce good conservation

- **Project design** – typically domain of in-house engineering/third-party engineering firms;
- **Environmental Review** – typically third-party environmental consultants engaged to prepare documents and/or fatal flaw analysis = do not generally seek ways to reduce impacts;

\*\*\*\*\*

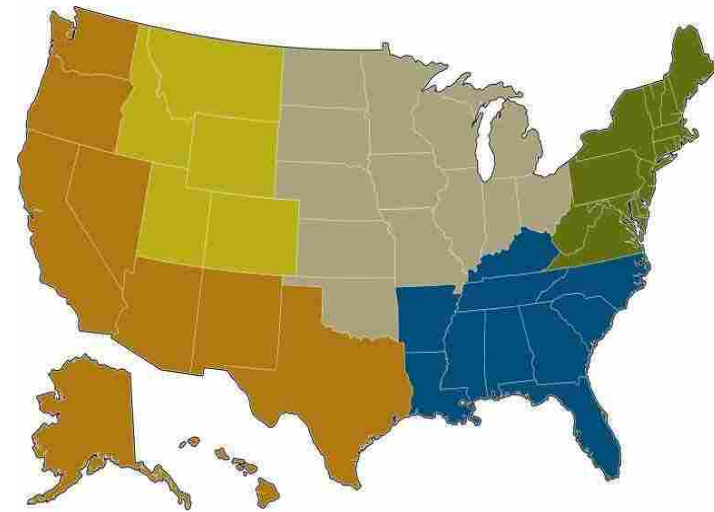
- **Permitting risk assessments; identification of mitigation packages/strategies** – role of third-party independent mitigation providers
- **Neutral brokers!**



# Additional Information

RESULTS	
Acres Protected to Date	6.7 million
Fair Market Value	\$5.6 billion
Conservation Programs	96%
Fundraising Costs	1%

RECOGNITION	
A+ Rating	American Institute of Philanthropy
Four Star Rating	Charity Navigator





- [www.conservationfund.org](http://www.conservationfund.org)
- Kris Hoellen  
Senior Vice President,  
Mitigation Solutions Lead  
304-653-9474  
khoellen@conservationfund.org
- Questions?