

Section 106 Consulting Parties Meeting

Washington Union Station Expansion Project

Monday, May 9, 2016
Columbus Club, Union Station



Second Consulting Parties Meeting Agenda:

- 1. Welcome**
- 2. Introductions**
- 3. Proposed Study Area and Important Viewsheds**
- 4. Existing Historic Districts, Sites, and Buildings**
- 5. Visual Impact Study**
- 6. Moving Forward: Discuss Schedule for Consulting Parties' Participation & Future Meetings**
- 7. Questions and Discussion**



Section 106 Process & NEPA

DECEMBER
2015

SUMMER
2016

SPRING
2017

FALL
2017

S106

- Define Undertaking
- Initiate Consultation

- Identify & Invite Consulting Parties
- Define Study Area
- Begin identifying potentially affected properties

Define Area(s) of Potential Effects (APE)

- Identify & Evaluate Historic Properties
- Assess Effects

Draft Memorandum of Agreement (MOA) or Programmatic Agreement (PA) to Resolve Adverse Effects

Execute MOA or PA

CONSULTING PARTY MEETINGS TO BE DETERMINED

EIS

Notice of Intent

Scoping

Purpose and Need

Project Alternatives

Environmental Studies and Evaluation

Draft Environmental Impact Statement (DEIS)

Final EIS / Record of Decision (ROD)

December 2015

Info Forum #2 March 30th

Public Meeting #3

Public Meeting #4

Public Meeting #5



Complete

Step 1: Initiate the Process

- Establish undertaking
- Notify SHPO
- Identify other consulting parties
- Plan to involve the public

Now until Spring 2017

Step 2: Identify Historic Properties

- Define Study Area
- Determine Area(s) of Potential Effect (APE)
- Identify historic properties (those properties listed on the National Register or eligible for listing)
- Consult with SHPO and other consulting parties
- Involve the public

Spring 2017

Step 3: Assess Effects of Undertaking

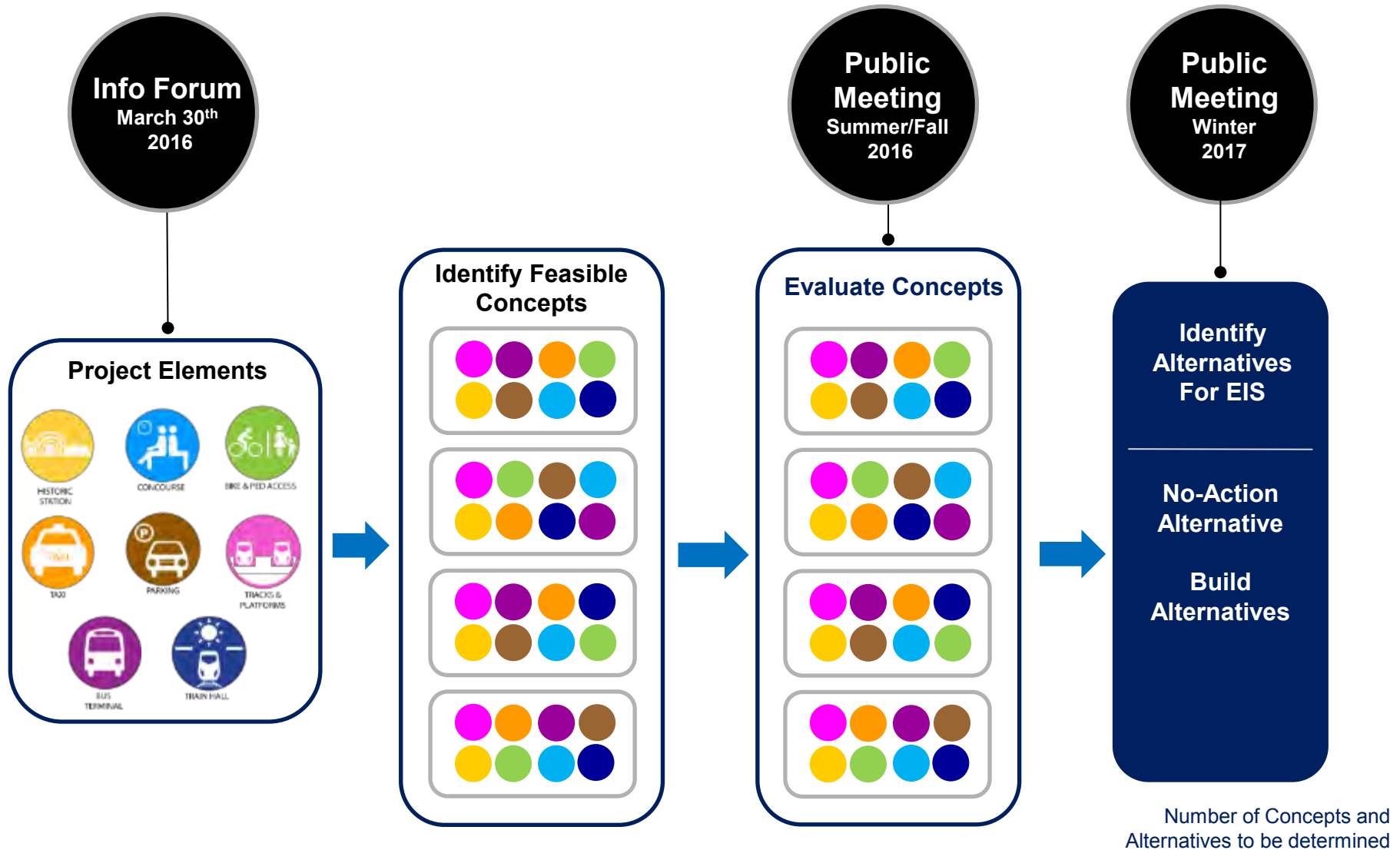
- Apply criteria of adverse effect. *Adverse effects occur when an undertaking directly or indirectly alters the characteristics of a historic property that qualify it for inclusion on the National Register in a manner that would diminish the integrity of the property's location, design, setting, materials, workmanship, feeling, or association.*
- Consult with SHPO and other consulting parties
- Involve the public

Fall 2017

Step 4: Resolve Adverse Effects

- Avoid, minimize, or mitigate adverse effects through continued consultation
- Develop agreement document (Memorandum of Agreement (MOA) or Programmatic Agreement (PA))

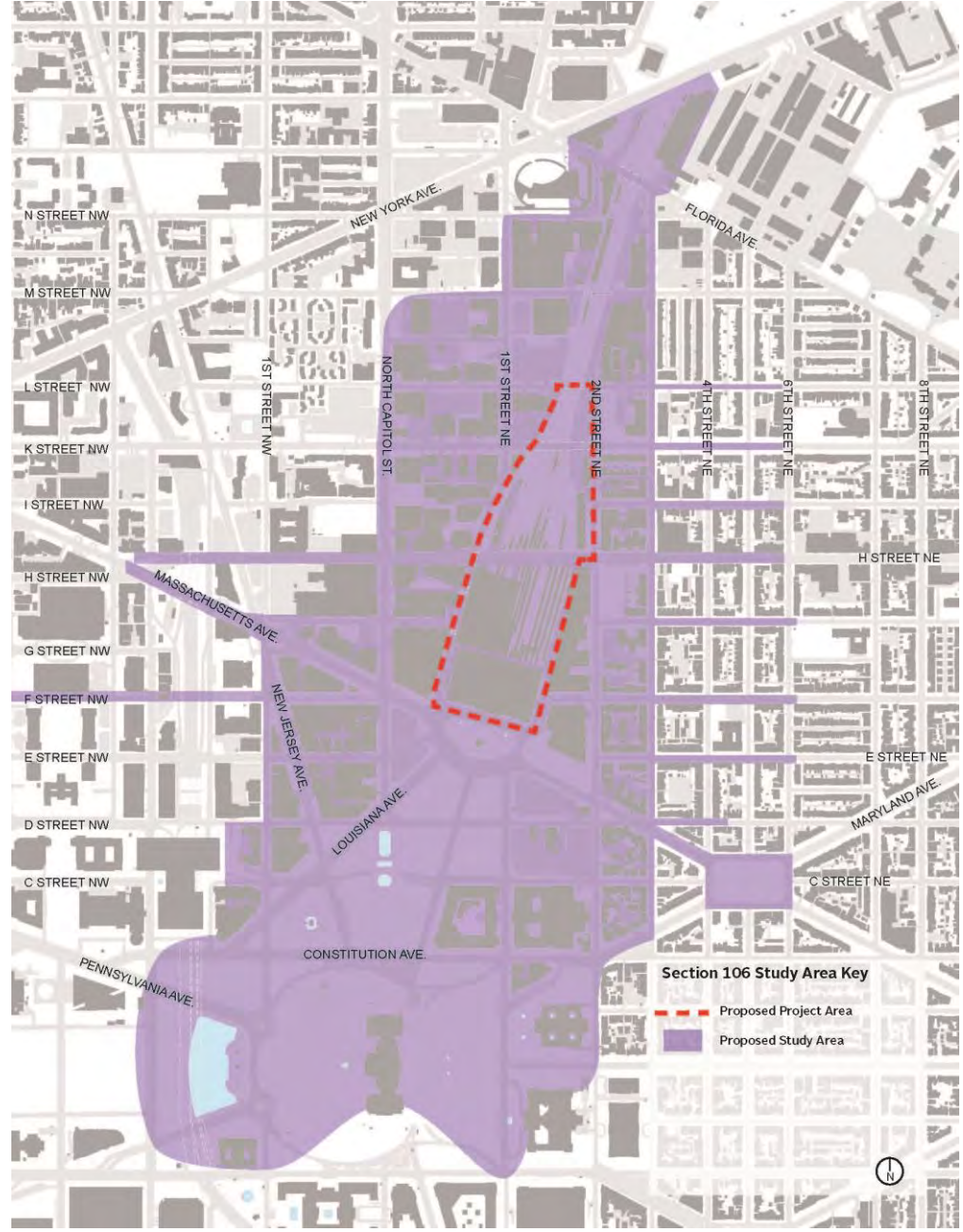
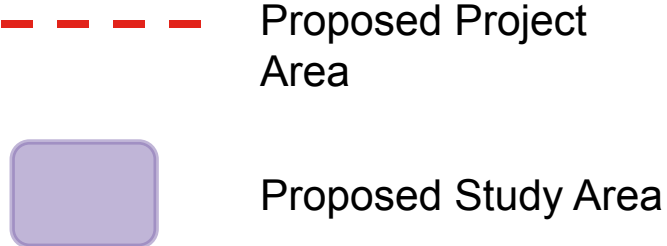
Next Steps in EIS Design Process



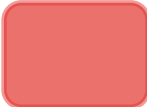
Proposed Section 106 Study Area

Study Area: The geographic area within which known historic properties are present that could potentially be directly or indirectly affected by the station expansion project.

- Important views
- DC and NR-listed districts, sites & buildings
- Most inclusive



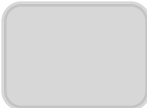
Proposed Section 106 Study Area - Viewsheds



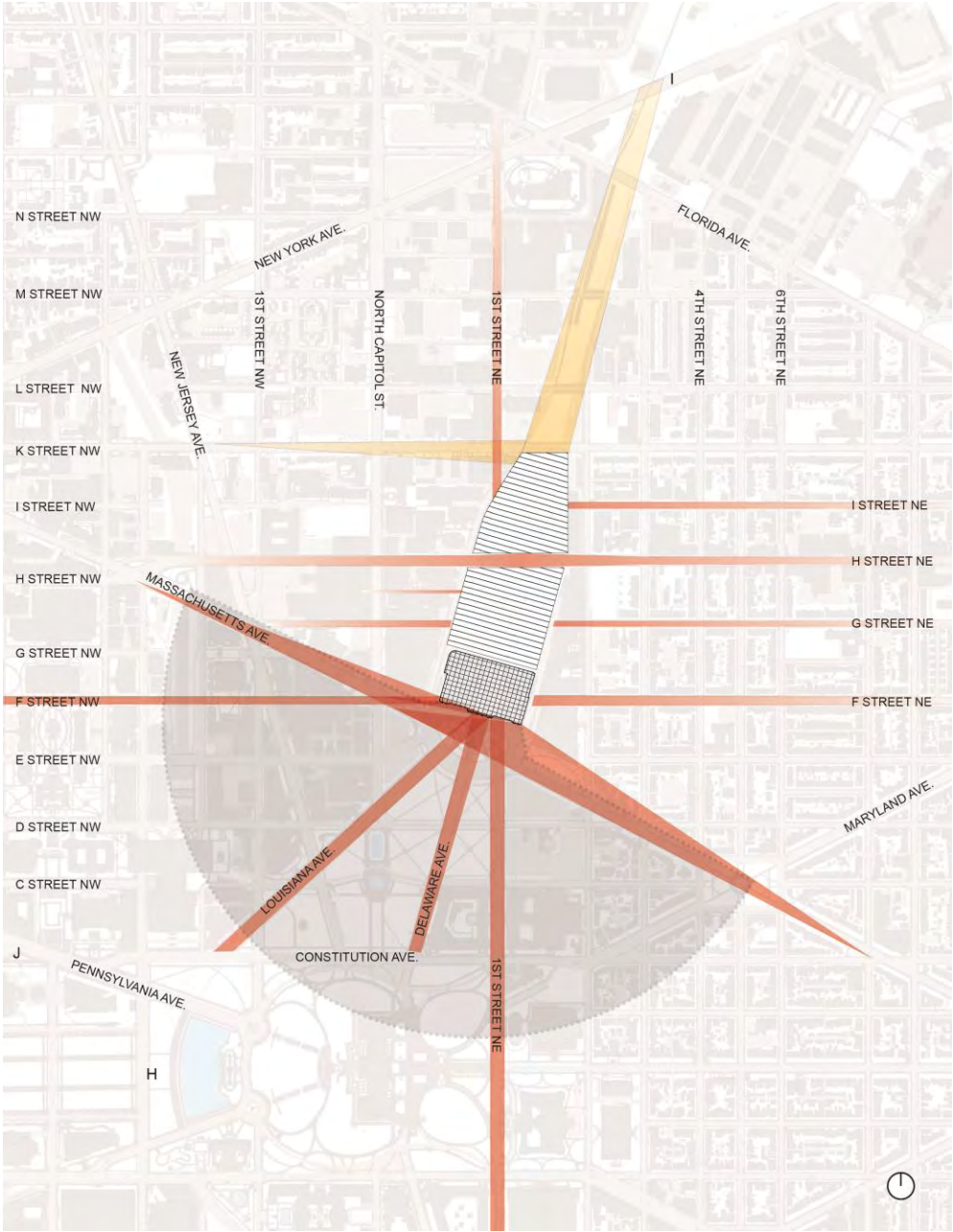
Axial Views Along Streets and Avenues of the L'Enfant Plan



NoMA Neighborhood Views

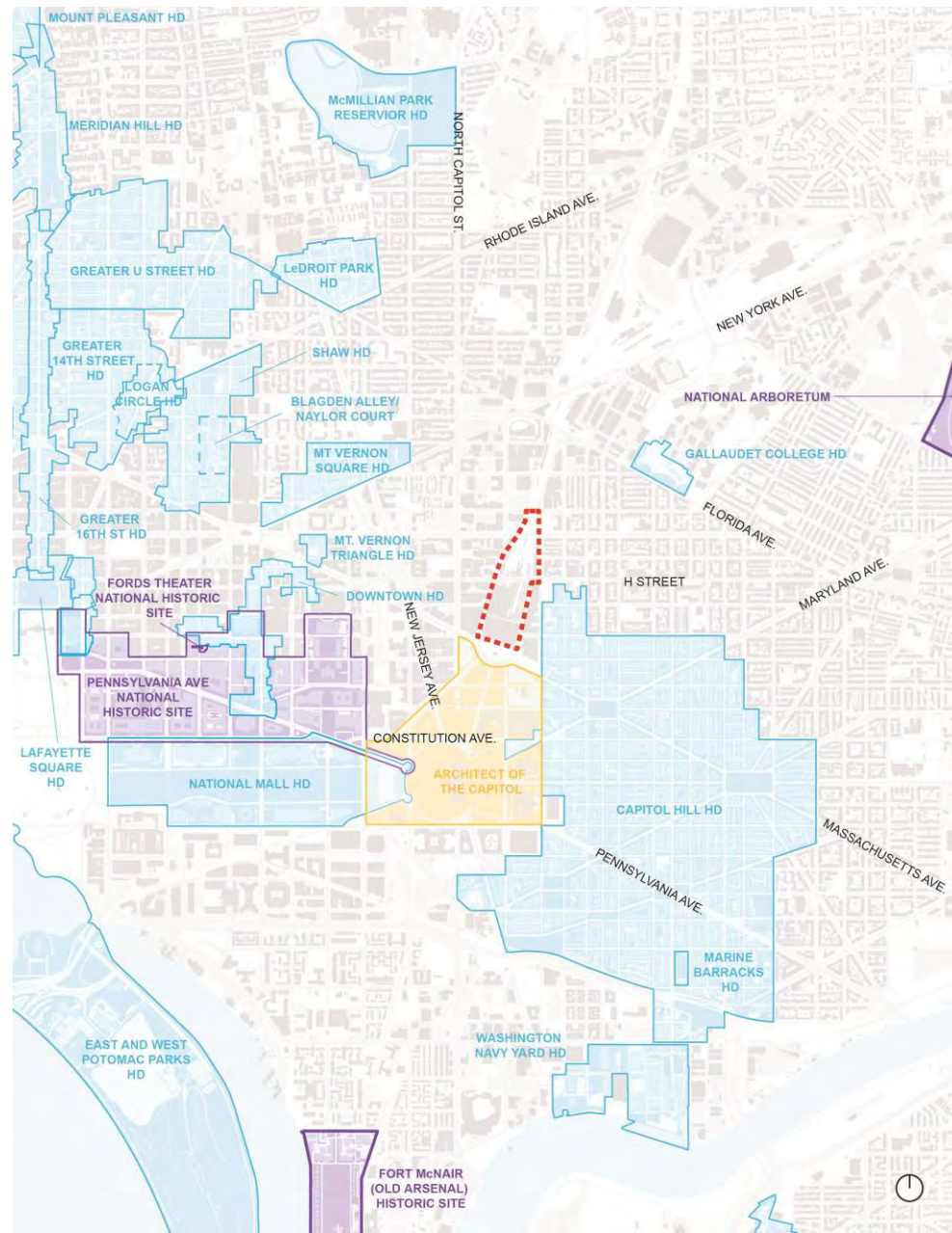


Views to and from buildings and public spaces (as identified in USRC's Union Station Historic Preservation Plan)



Map of Historic Districts

-  Proposed Project Area
-  DC Inventory of Historic Sites – Designated Historic Site
-  DC Inventory of Historic Sites – Designated Historic District
-  Architect of the Capitol Properties



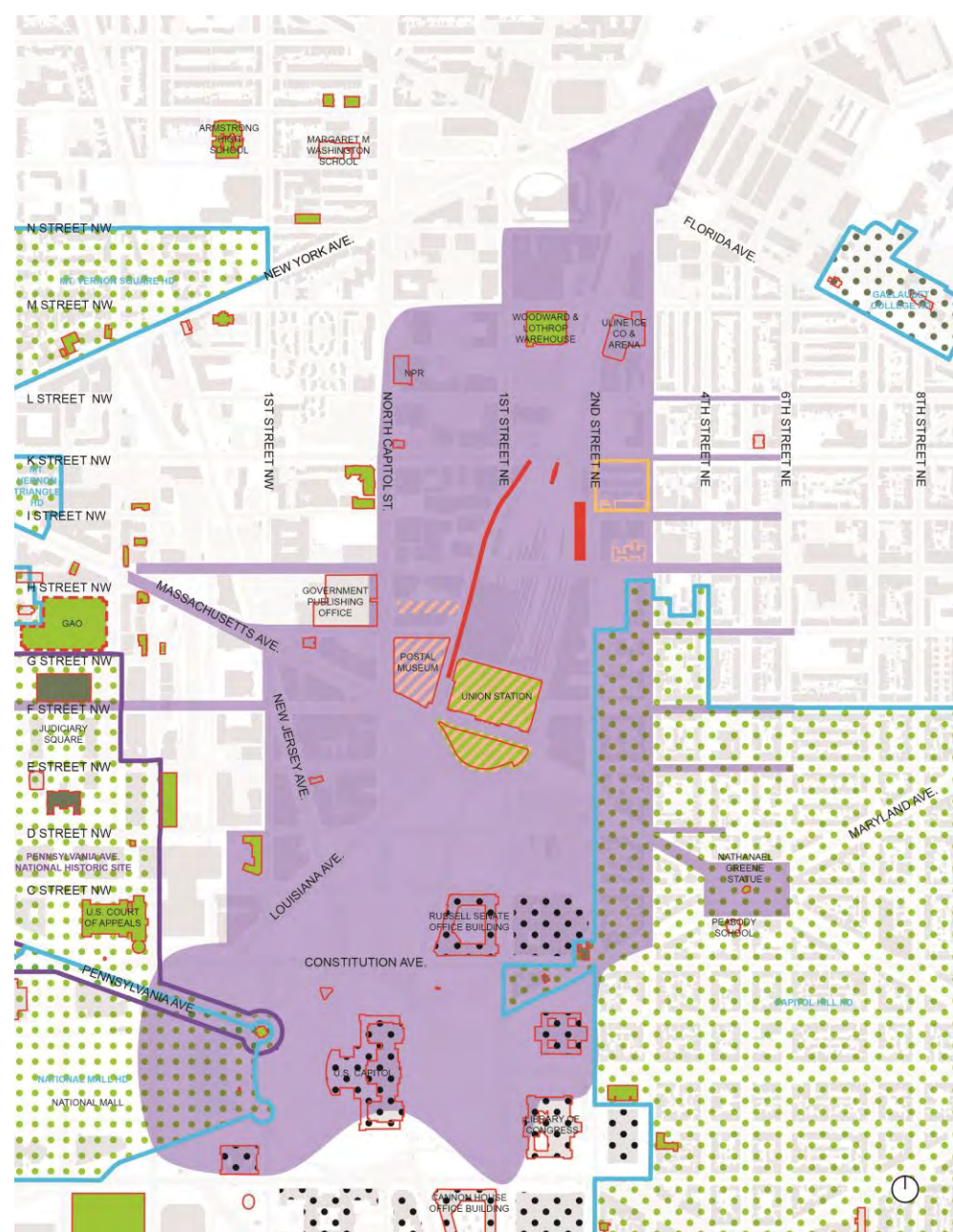
Map of Historic Districts and Sites

-  Contributing Elements to WUS
-  DC Inventory– Designated Historic Landmark (dashed red = potential DC historic landmark)
-  DC Inventory– Historic District (green dots = NRHP district)
-  DC Inventory– Historic Site
-  NRHP Building, Structure or Object
-  National Historic Landmark and on NRHP
-  Potential Historic District
-  Architect of the Capitol building (black dots)

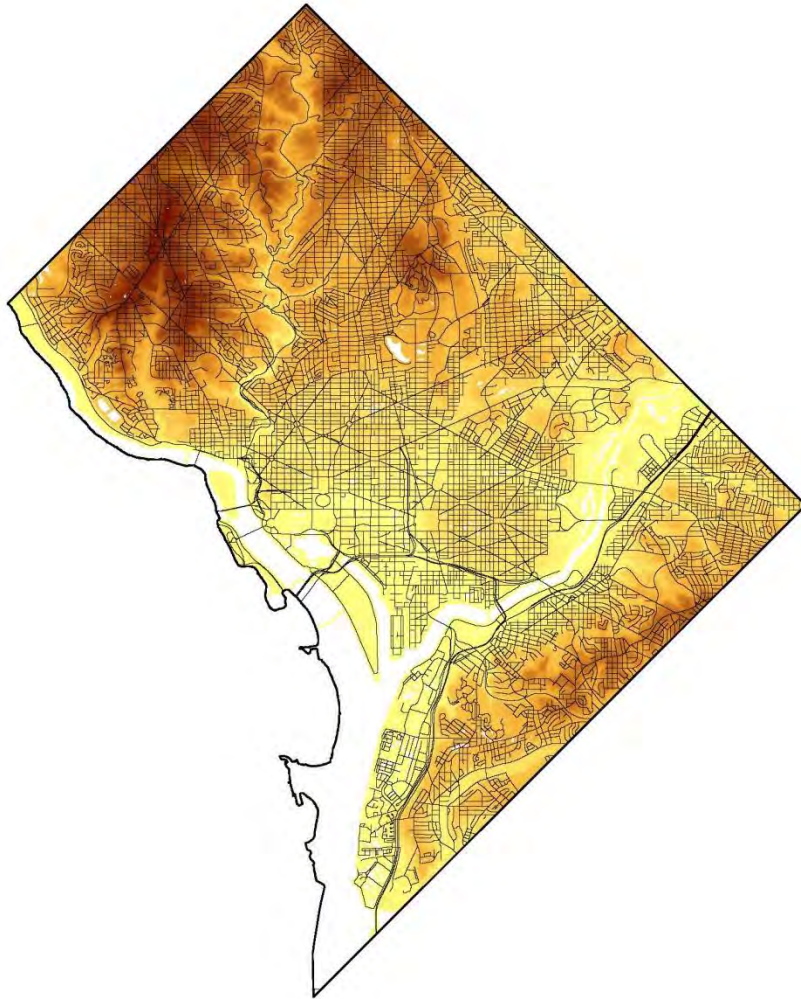


Map of Historic Districts and Sites with Proposed S106 Draft Study Area

-  Contributing Elements to WUS
-  DC Inventory– Designated Historic Landmark (dashed red = potential DC historic landmark)
-  DC Inventory– Historic District (green dots = NRHP district)
-  DC Inventory– Historic Site
-  NRHP Building, Structure or Object
-  National Historic Landmark and on NRHP
-  Potential Historic District
-  Architect of the Capitol building (black dots)
-  Proposed S106 Study Area



Proposed Viewshed Impact Locations



Proposed viewshed impact locations:
Viewsheds that may be affected by the station expansion project.

High points with potential viewshed impacts include:

- Arlington National Cemetery (not shown on map)
- St. Elizabeth's (West Campus)
- U.S. Capitol Dome
- Washington Monument
- Old Post Office Building
- National Cathedral
- Catholic University
- National Arboretum



View From Arlington National Cemetery



View From U.S. Capitol Dome



View From the Washington Monument



View From St. Elizabeth's West Campus

Moving Forward: Schedule for Consulting Parties (Meetings TBD)

Step 1:
Initiate the
Process

November 2015: Formally Initiate the Process

Consulting Party Meeting #1 –

Introduce the Project (undertaking) to Consulting Parties and seek input on approach. Distinguish project/undertaking from other efforts.

Step 2:
Identify
Historic
Properties

Today: Consulting Party Meeting #2 –

Discuss proposed Section 106 Study Area and known historic properties within Study Area.

TBD: Consulting Party Meeting #3 – Preview the design concepts before the EIS Public Meeting (TBD). Refine Study Area based on those concepts. Refine list of known historic properties within Study Area.

Moving Forward: Schedule for Consulting Parties (Meetings TBD)

Step 2:
Identify
Historic
Properties
(continued)

Fall 2016: Consulting Party Meeting #4 –

Review list of additional properties (based on CP input) within Study Area that may be affected. Review proposed Area(s) of Potential Effect (APE(s)) (built and archaeological; indirect and direct) for each Alternative in the EIS.

Fall-Winter 2016: Consulting Party Meeting #5 –

Confirm list of properties within APE(s) that may be affected. Confirm inventory of historic properties and significance. Confirm APE(s) (built and archaeological; indirect and direct) for each Alternative in EIS.

Step 3:
Assess
Effects of
Undertaking

Mid-April 2017: Consulting Party Meeting #6 –

Review assessment of effects (no effect, no adverse effect, adverse effect).

Mid-June 2017: Consulting Party Meeting #7 –

If necessary, confirm findings of adverse effect. If necessary, solicit input from consulting parties on Section 106 Agreement Document content and structure to inform drafting such a document.

Moving Forward: Schedule for Consulting Parties (Meetings TBD)

Step 4:
Resolve
Adverse
Effects

August 2017: Consulting Party Meeting #8 –

If necessary, review content of Section 106 Agreement Document (MOA or PA).

November 2017: Consulting Party Meeting #9 –

If necessary, discuss Draft Section 106 Agreement Document (MOA or PA).

Questions/Discussion

Email
questions/comments to:
laura.shick@dot.gov
info@WUSstationexpansion.com

Or written comments to
FRA:

Laura Shick, Federal
Preservation Officer

RPD-13

Office of Railroad Policy
and Development

USDOT Federal Railroad
Administration

1200 New Jersey Ave. SE
Washington DC 20590

