

# 2016

# FRA Rail Program Delivery

Meeting

## Lightening Talks Point Defiance Bypass and New Station in Tacoma

Valarie Kniss and Chris Dunster  
FRA and WSDOT

# Point Defiance Bypass

## ▶ Project overview

- ▶ \$150 million project
- ▶ New Tacoma Amtrak Cascades station at Freighthouse Square
- ▶ New 19.5-mile inland bypass route for less congestion, quicker trips
- ▶ Five reconstructed crossings with advanced warning and signal systems
- ▶ New crossovers and turnouts to reduce passenger train congestion
- ▶ Three railroad bridges rehabilitated; a fourth re-constructed
- ▶ New, 700-foot trestle platform extension (in conjunction with Sound Transit)



# New Tacoma station

- ▶ Location within Freighthouse Square
  - ▶ Part of a multi-modal hub with commuter trains, light rail, transit buses, and private bus lines



# New Tacoma station

## ► Current construction progress



# New Tacoma station

- ▶ Entrance doors can be lifted to provide greater indoor-outdoor experience



# New Tacoma station

- ▶ Corridor links to shops and cafes



# New Tacoma station

- ▶ Waiting room includes glass and wood elements with a Northwest feel



# New Tacoma station

- ▶ Platform on station side



- ▶ Covered glass canopies allow for sunlight, as well as rain protection





# New Tacoma station

- ▶ Adding second platform

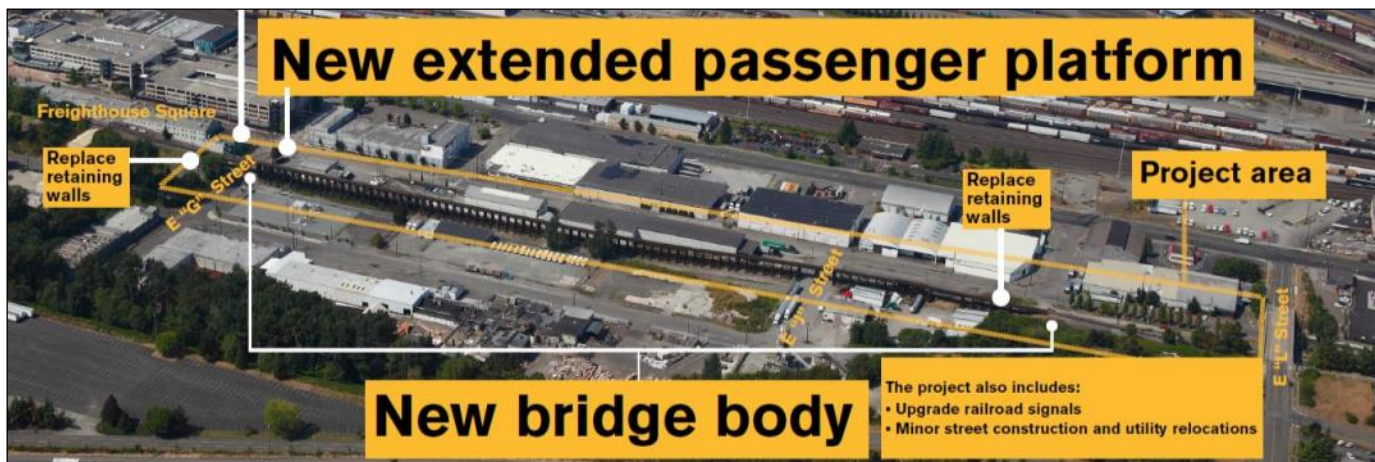


- ▶ Both platforms will service commuter and Amtrak Cascades trains



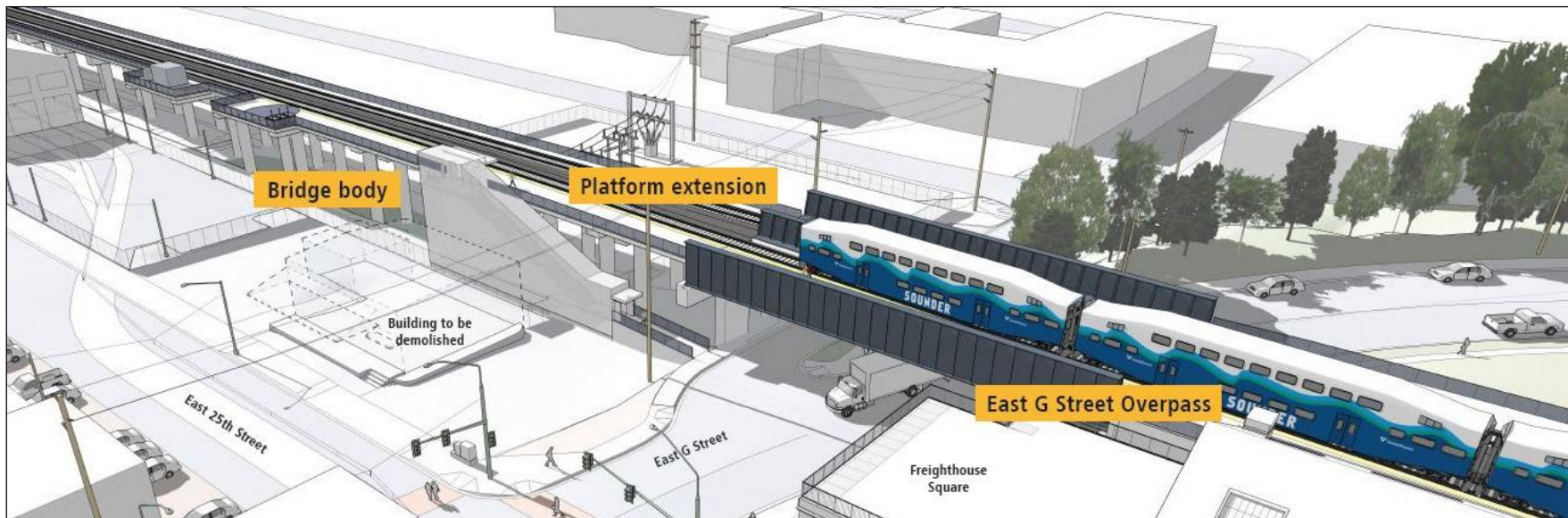
# Tacoma trestle project

- ▶ Sound Transit project, with WSDOT-funded components
  - ▶ Replacing aging wooden single-track trestle
  - ▶ Building new concrete double-track bridge
  - ▶ Extending platform to accommodate long-distance trains
  - ▶ Upgrading railroad signals



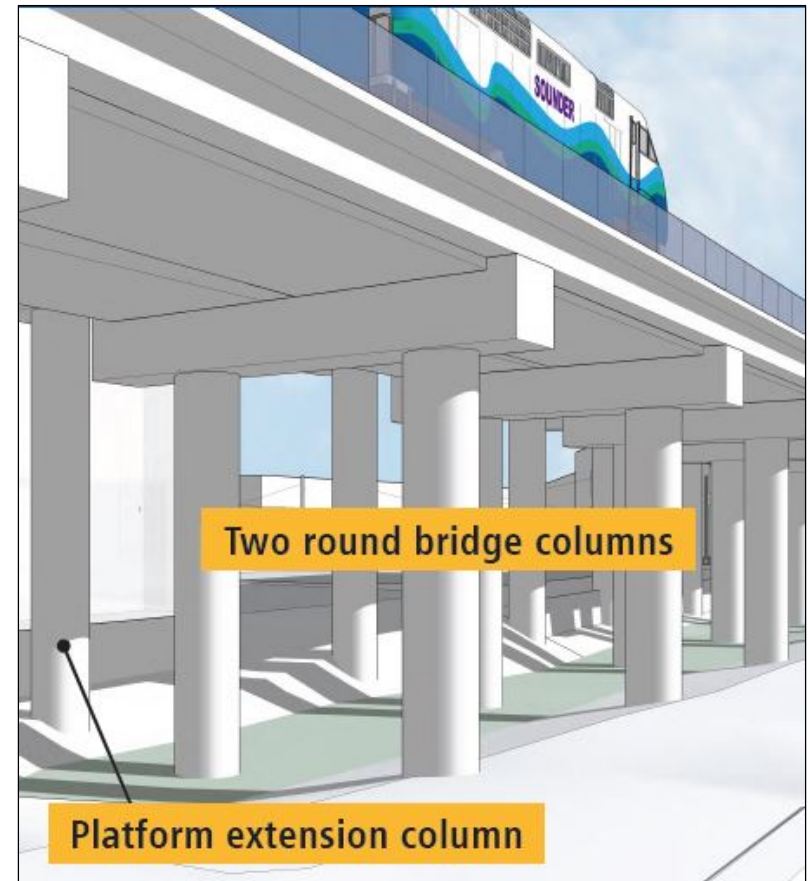
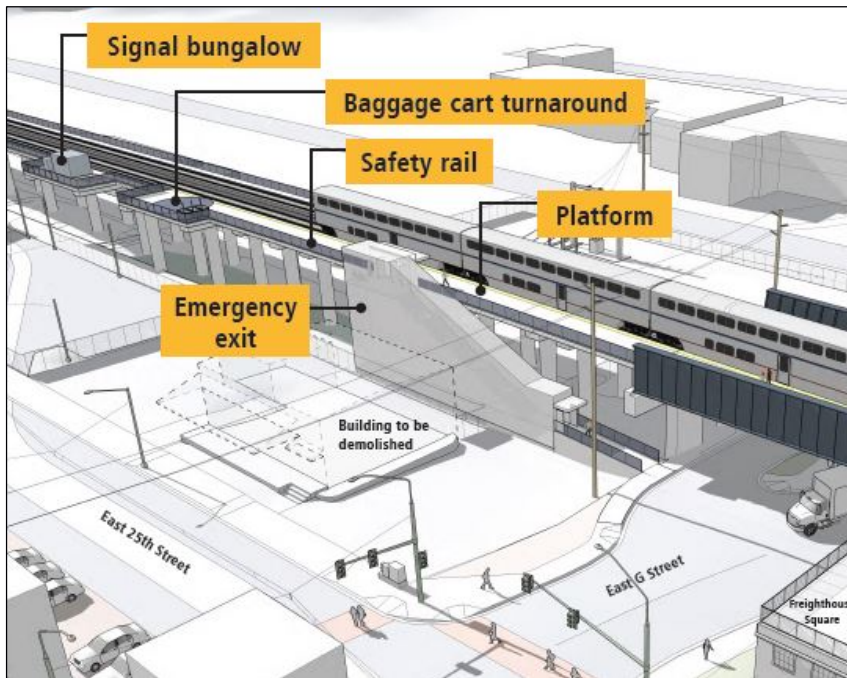
# Tacoma trestle project

- ▶ Will be used by Sounder commuter trains, Amtrak Cascades intercity trains, and Amtrak long-distance trains



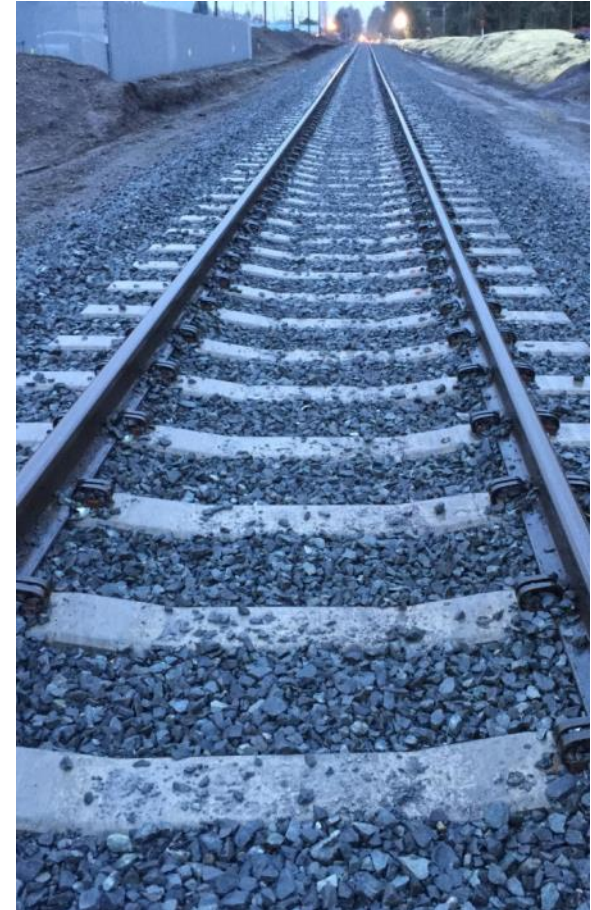
# Tacoma trestle project

- ▶ Bridge body and platform extension



# Track and signal work

- ▶ WSDOT contracted with Sound Transit to deliver the track and signal work on its right-of-way
- ▶ **This part of the project includes:**
  - ▶ 14.5 miles on new and upgraded tracks
  - ▶ Safety improvements at five traffic signals that have at-grade railroad crossings
  - ▶ Bridge rehabilitation and construction
  - ▶ Retaining wall construction and fencing



# 2016

# FRA Rail Program Delivery

## Meeting

# Thank you!

Valarie Kniss

Northwest Regional Manager

[Valarie.Kniss@dot.gov](mailto:Valarie.Kniss@dot.gov)

202-493-0616

[www.FRA.dot.gov](http://www.FRA.dot.gov)

Chris Dunster

Assistant Program Delivery Manager

[DunsteC@wsdot.wa.gov](mailto:DunsteC@wsdot.wa.gov)

360-705-6947

[WSDOT.wa.gov/Rail](http://WSDOT.wa.gov/Rail)