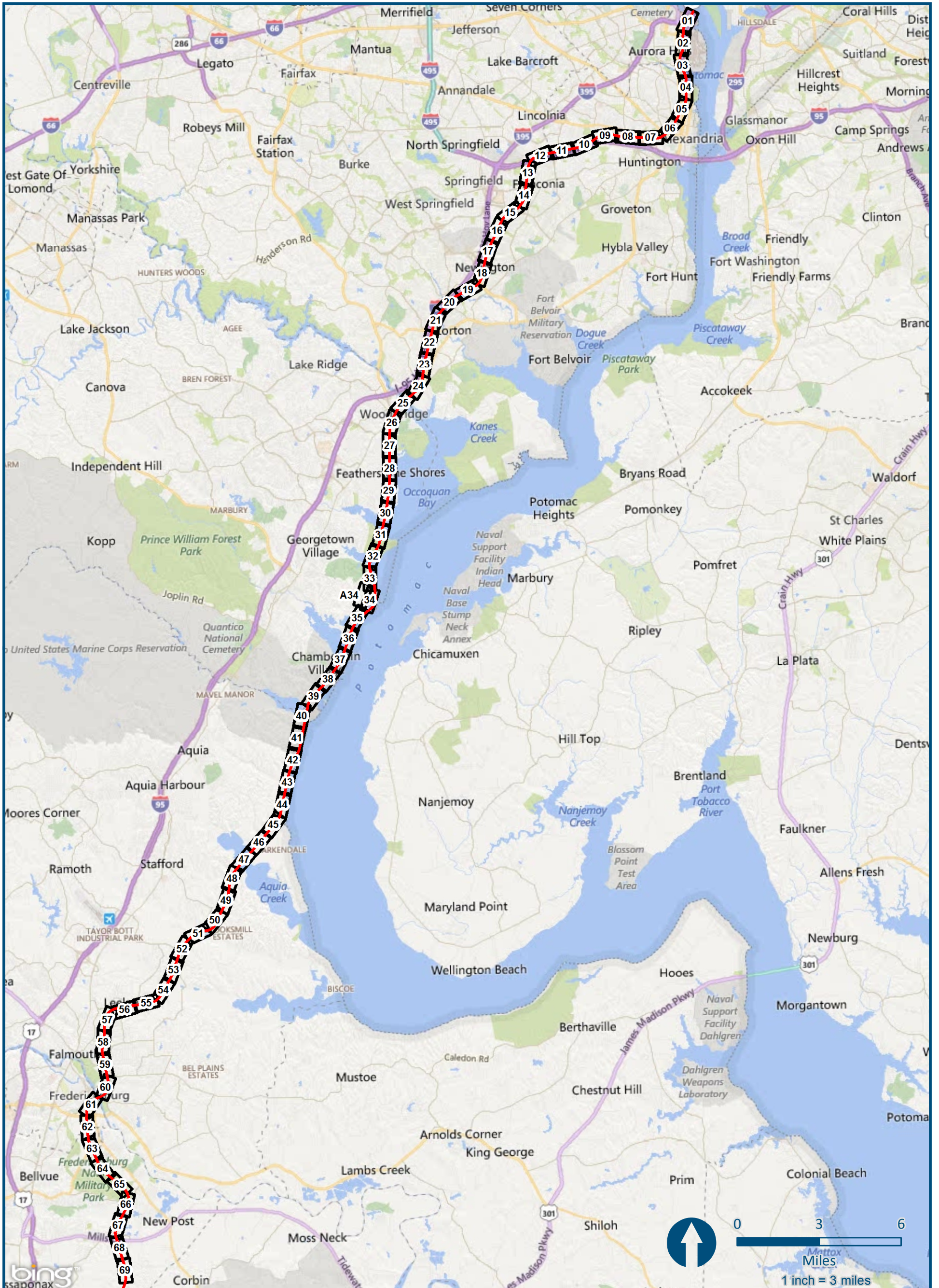
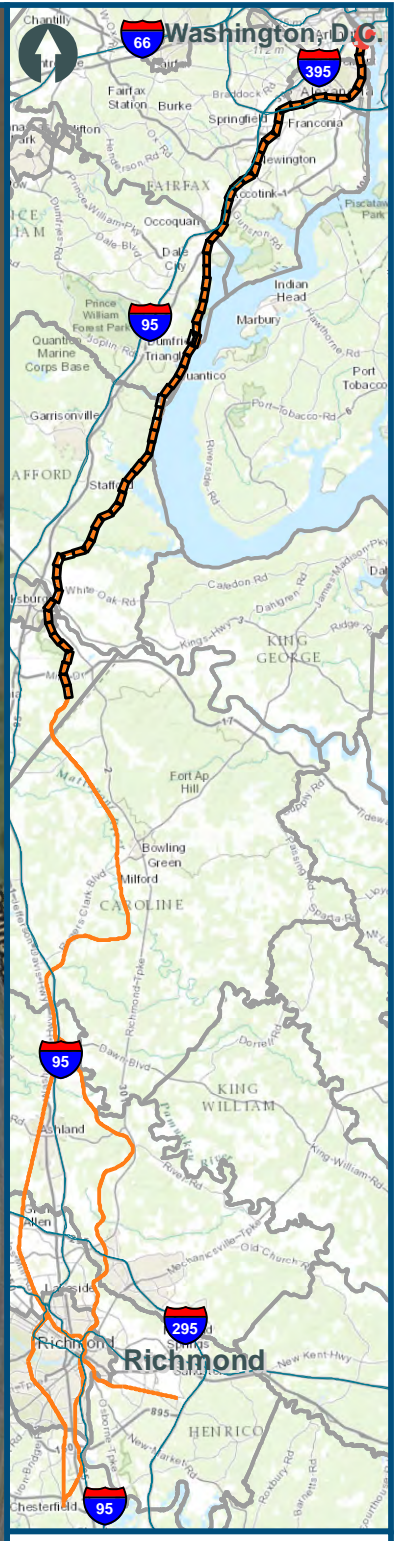


## Northern Virginia (NOV) Project Section Hold Bridges and Tangents Alignment Option Index Map



\\dlsmain\GIS\_DATA\GIS\Projects\011545\_VA\Dev\Rail\Public\Trans\portation\0230056\_RAPS-4\AI\Dev-Concept\Eng\map\_docs\mxd\AI\_Tech\_Report\DC2RVA\_Appendix\_AlignmentIndex\_11x17.mxd | Last Updated: 11.05.2015

\\dlismain\GIS\_DATA\GIS\Projects\11545\_VA\DeptofRails-Public\Transportation\0239056\_RAPS-4\AIDev-Concept\Eng\map\_docs\mxd\Alt\_Tech\_Report\DC2RVA\_Cht6\_Appendices\_NOV\_HoldBridgesandTangents\_Alignments\_11x17.mxd | Last Updated: 11.04.2015

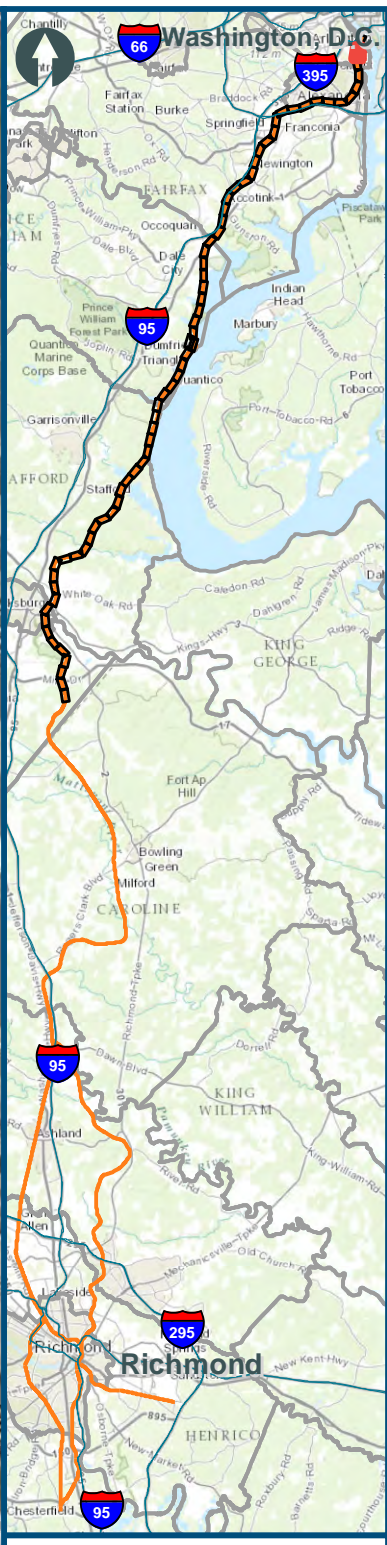


0 150 300  
Feet  
1 inch = 300 feet  
@ 11 x 17 inches  
Projection: Lambert Conformal Conic  
State Plane Virginia North FIPS 4501 Feet  
North American Datum of 1983  
Imagery: Bing Map Aerial

**Legend**

- CSXT Mileposts
- Existing Track
- New Track
- Shifted Track
- CSXT Right-of-Way
- Streams

**Figure I-1**  
**Northern Virginia**  
**Hold Bridges and**  
**Tangents**  
**Alignment Option**

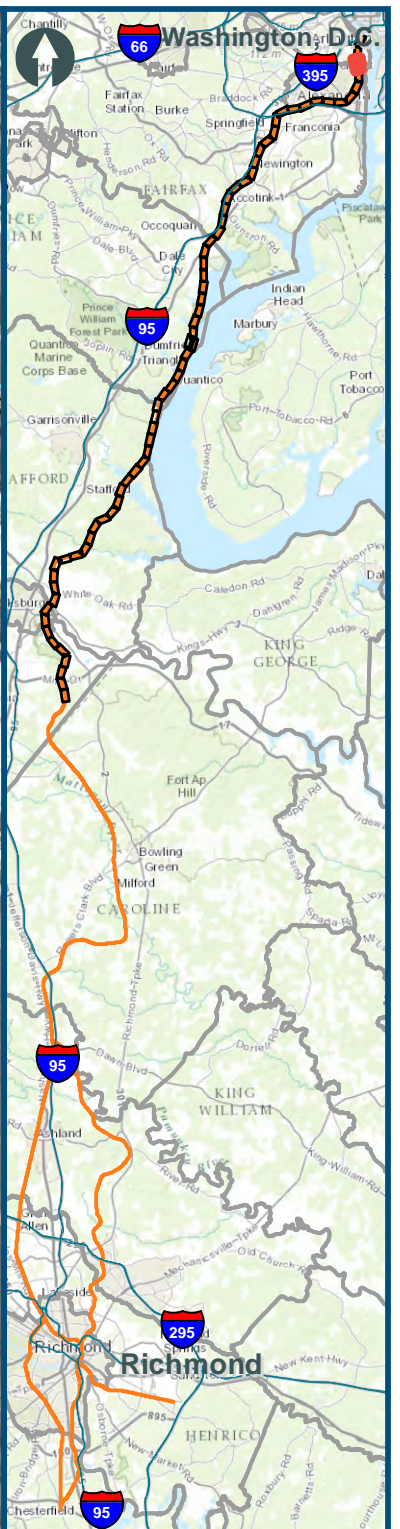


0 150 300  
 Feet  
 1 inch = 300 feet  
 @ 11 x 17 inches  
 Projection: Lambert Conformal Conic  
 State Plane Virginia North FIPS 4501 Feet  
 North American Datum of 1983  
 Imagery: Bing Map Aerial

- Legend**
- WMATA
  - VRE Station
  - CSXT Mileposts
  - Existing Track
  - New Track
  - Shifted Track
  - CSXT Right-of-Way
  - Streams

**Figure I-2**  
**Northern Virginia**  
**Hold Bridges and**  
**Tangents**  
**Alignment Option**

\\dlmain\GIS\_DATA\GIS\Projects\11545\_VA Dept of Rail's Public Transportation\0239056\_RAPS-4\11Dev-Concept\Eng\map\_docs\mxd\Alt\_Tech\_Report\DC2RVA\_Ch6\_Appendices\NOV\_HoldBridgesandTangents\_Alignments\_11x17.mxd | Last Updated: 11.04.2015



0 150 300  
Feet  
1 inch = 300 feet  
@ 11 x 17 inches  
Projection: Lambert Conformal Conic  
State Plane Virginia North FIPS 4501 Feet  
North American Datum of 1983  
Imagery: Bing Map Aerial

**Legend**

- CSXT Mileposts
- Existing Track
- New Track
- Shifted Track
- ▭ CSXT Right-of-Way
- Streams

**Figure I-3**  
**Northern Virginia**  
**Hold Bridges and**  
**Tangents**  
**Alignment Option**

\\dlismain\GIS\_DATA\GIS\Projects\011545\_VA Dept of Rails-Public\Transportation\0239056\_RAPS-4\AllDev-Concept\Eng\map\_docs\mxd\Alt\_Tech\_Report\DC2RVA\_Chr6\_Appendices\_NOV\_HoldBridgesandTangents\_Alignments\_11x17.mxd | Last Updated: 11.04.2015

\\dlismain\GIS\_DATA\GIS\Projects\11545\_VA\DeptofRails-PublicTransportation\0239056\_RAPS-4\AIDev-ConceptEng\map\_docs\mxd\Alt\_Tech\_Report\DC2RVA\_Ch6\_Appendices\_NOV\_HoldBridgesandTangents\_Alignments\_11x17.mxd | Last Updated: 11.04.2015



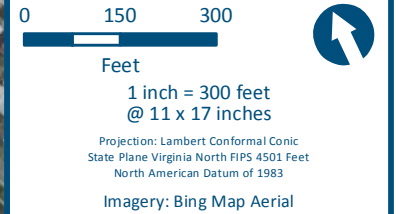
0 150 300  
Feet  
1 inch = 300 feet  
@ 11 x 17 inches  
Projection: Lambert Conformal Conic  
State Plane Virginia North FIPS 4501 Feet  
North American Datum of 1983  
Imagery: Bing Map Aerial

**Legend**

- CSXT Mileposts
- Existing Track
- New Track
- Shifted Track
- ▭ CSXT Right-of-Way
- Streams

**Figure I-4**  
**Northern Virginia**  
**Hold Bridges and**  
**Tangents**  
**Alignment Option**

\\dlismain\GIS\_DATA\GIS\Projects\11545\_VA\DeptofRails-PublicTransportation\0239056\_RAPS-4\AllDev-Concept\Eng\map\_docs\mxd\Alt\_Tech\_Report\DC2RVA\_Chr6\_Appendices\_NOV\_HoldBridgesandTangents\_Alignments\_11x17.mxd | Last Updated: 11.04.2015



- Legend**
- CSXT Mileposts
  - Existing Track
  - New Track
  - Shifted Track
  - CSXT Right-of-Way
  - Streams

**Figure I-5**  
**Northern Virginia**  
**Hold Bridges and**  
**Tangents**  
**Alignment Option**



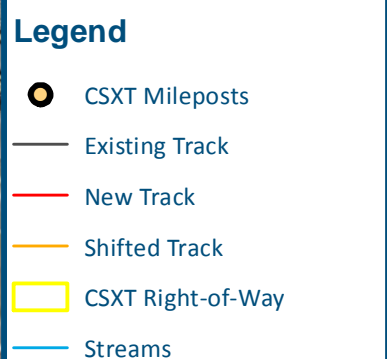
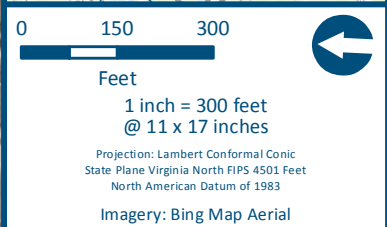
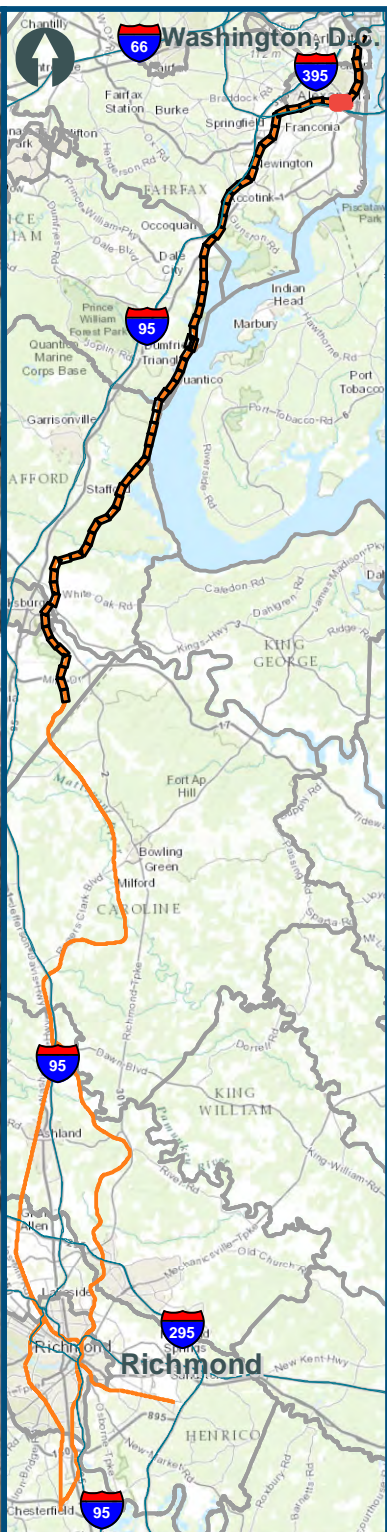
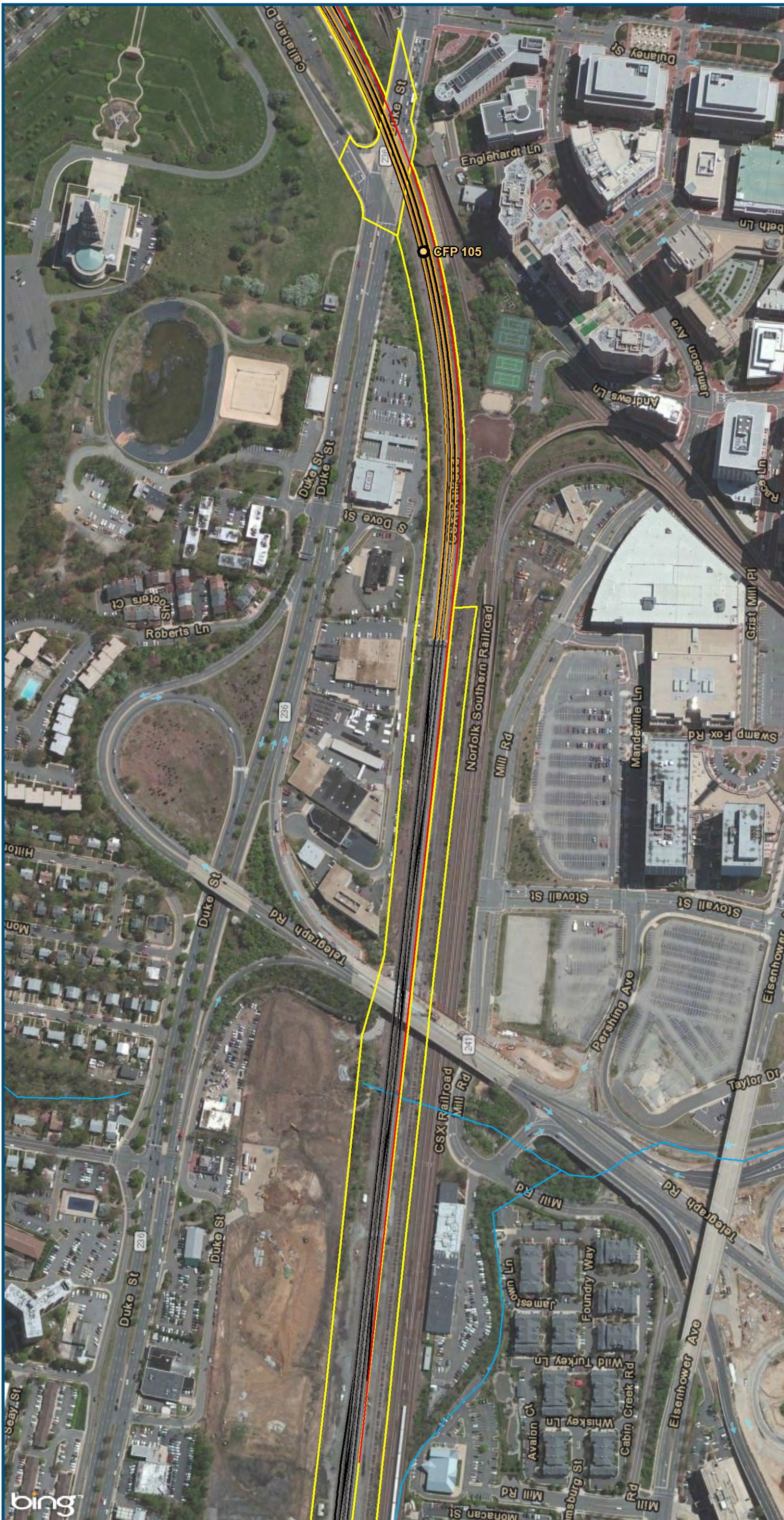
0 150 300  
Feet  
1 inch = 300 feet  
@ 11 x 17 inches  
Projection: Lambert Conformal Conic  
State Plane Virginia North FIPS 4501 Feet  
North American Datum of 1983  
Imagery: Bing Map Aerial

**Legend**

- WMATA
- Amtrak/VRE Station
- CSXT Mileposts
- Existing Track
- New Track
- Shifted Track
- CSXT Right-of-Way
- Streams

**Figure I-6**  
**Northern Virginia**  
**Hold Bridges and**  
**Tangents**  
**Alignment Option**

\\dlismain\GIS\_DATA\GIS\Projects\011545\_VA\DeptofRails-PublicTransportation\0239056\_RAPS-4\AIDev-Concept\Eng\map\_docs\mxd\Alt\_Tech\_Report\DC2RVA\_Ch6\_Appendices\_NOV\_HoldBridgesandTangents\_Alignments\_11x17.mxd | Last Updated: 11.04.2015

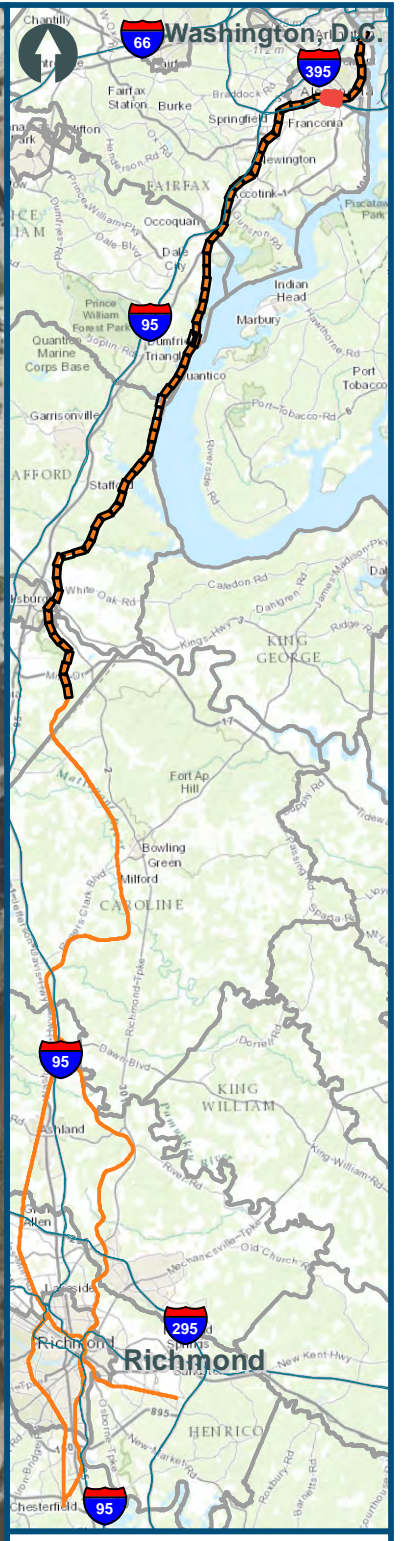


**Figure I-7  
Northern Virginia  
Hold Bridges and  
Tangents  
Alignment Option**

\\dlismain\GIS\_DATA\GIS\Projects\011545\_VA Dept of Rails-Public\Transportation\0239056\_RAPS-4\AIDDev-Concept\Eng\map\_docs\mxd\Ait\_Tech\_Report\DC2RVA\_Cht6\_Appendices\_NOV\_HoldBridgesandTangents\_Alignments\_11x17.mxd | Last Updated: 11.04.2015



\\dlismain\GIS\_DATA\GIS\Projects\11545\_VA Dept of Rails-Public\Transportation\0239056\_RAPS-4\AIDev-Concept\Eng\map\_docs\mxd\Alt\_Tech\_Report\DC2RVA\_Ch6\_Appendices\NOV\_HoldBridgesandTangents\_Alignments\_11x17.mxd | Last Updated: 11.04.2015



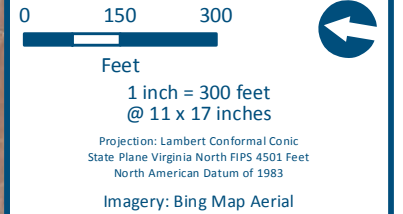
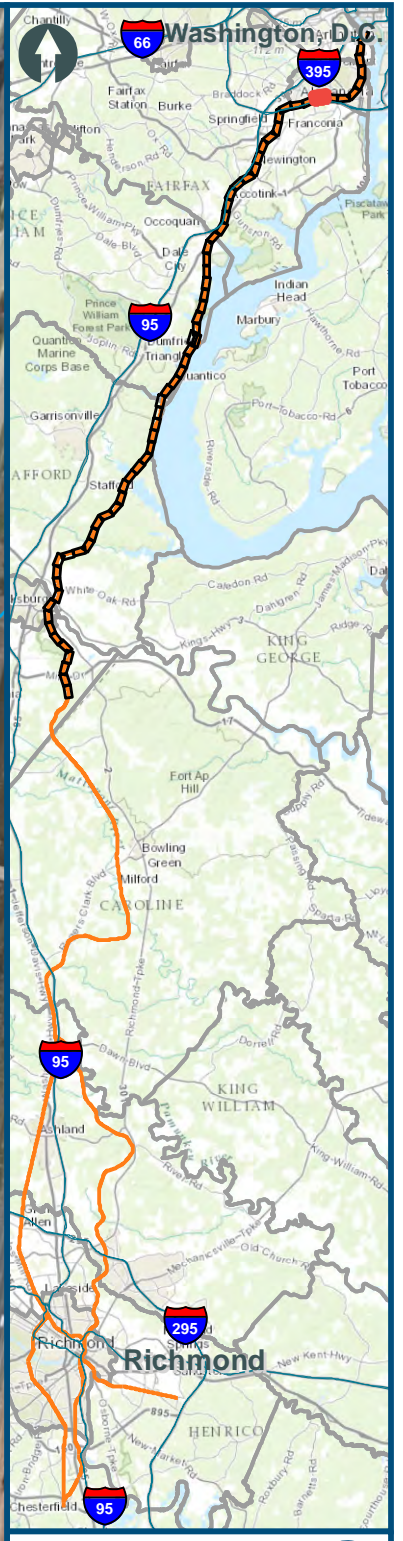
0 150 300  
Feet  
1 inch = 300 feet  
@ 11 x 17 inches  
Projection: Lambert Conformal Conic  
State Plane Virginia North FIPS 4501 Feet  
North American Datum of 1983  
Imagery: Bing Map Aerial

**Legend**

- CSXT Mileposts
- Existing Track
- New Track
- Shifted Track
- ▭ CSXT Right-of-Way
- Streams

**Figure I-8**  
**Northern Virginia**  
**Hold Bridges and**  
**Tangents**  
**Alignment Option**

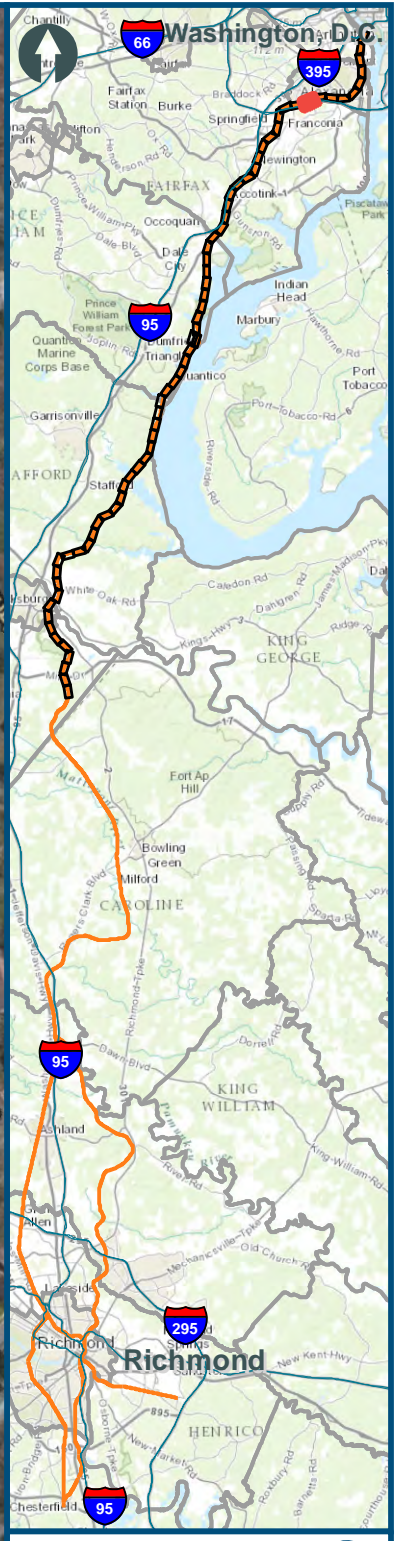
\\dlismain\GIS\_DATA\GIS\Projects\011545\_VA\DeptofRails-PublicTransportation\0239056\_RAPS-4\AIDev-ConceptEng\map\_docs\mxd\Alt\_Tech\_Report\DC2RVA\_Ch6\_Appendices\_NOV\_HoldBridgesandTangents\_Alignments\_11x17.mxd | Last Updated: 11.04.2015



- Legend**
- CSXT Mileposts
  - Existing Track
  - New Track
  - Shifted Track
  - CSXT Right-of-Way
  - Streams

**Figure I-9**  
**Northern Virginia**  
**Hold Bridges and**  
**Tangents**  
**Alignment Option**

\\dlmain\GIS\_DATA\GIS\Projects\11545\_VA\DeptofRails-PublicTransportation\0239056\_RAPS-4\AIDev-ConceptEng\map\_docs\mxd\Ait\_Tech\_Report\DC2RVA\_Chr6\_Appendices\_NOV\_HoldBridgesandTangents\_Alignments\_11x17.mxd | Last Updated: 11.04.2015



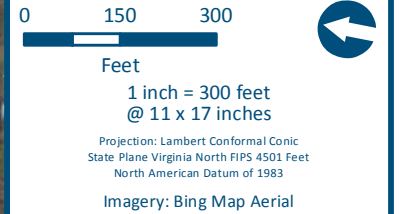
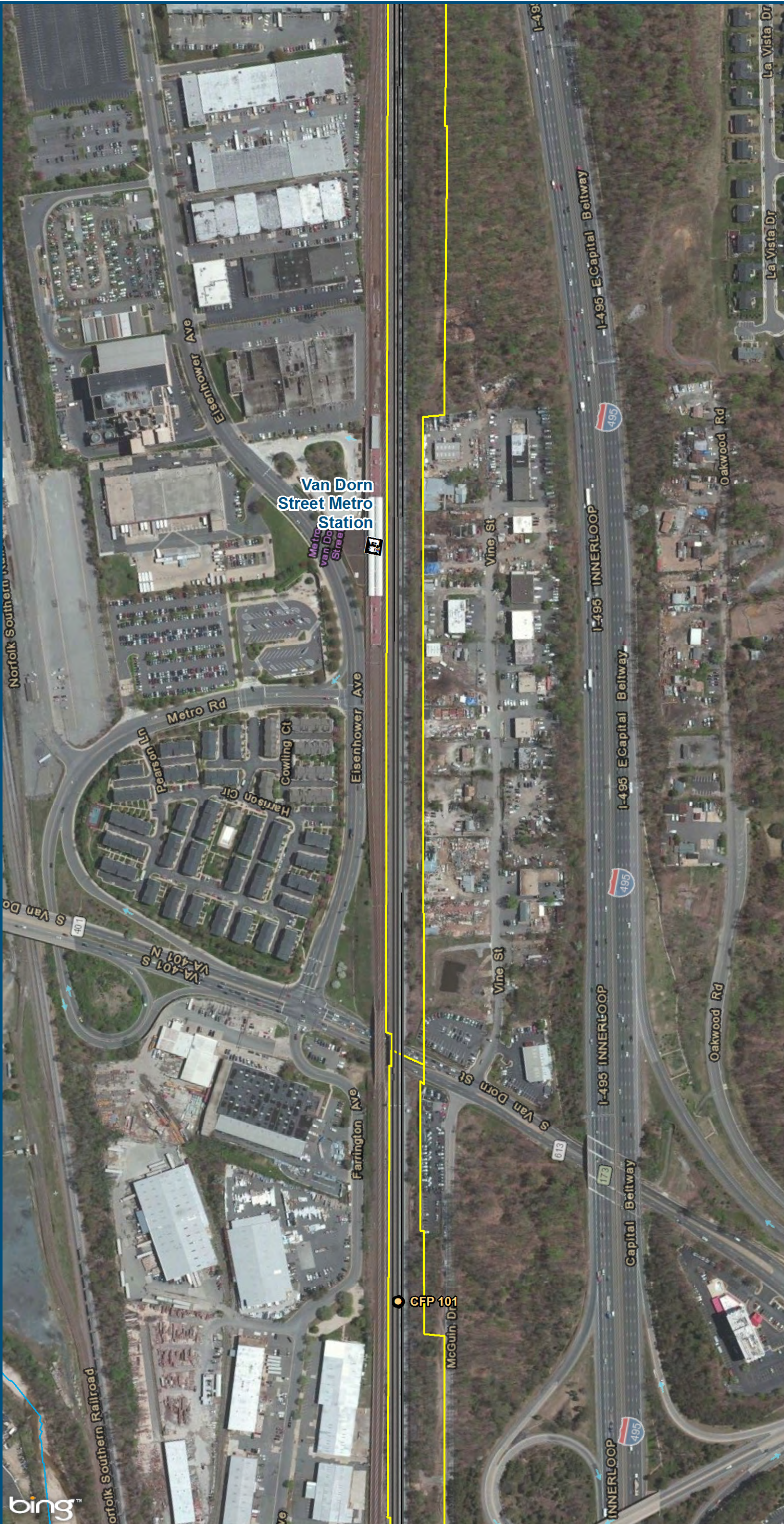
0 150 300  
Feet  
1 inch = 300 feet  
@ 11 x 17 inches  
Projection: Lambert Conformal Conic  
State Plane Virginia North FIPS 4501 Feet  
North American Datum of 1983  
Imagery: Bing Map Aerial

**Legend**

- CSXT Mileposts
- Existing Track
- New Track
- Shifted Track
- CSXT Right-of-Way
- Streams

**Figure I-10**  
**Northern Virginia**  
**Hold Bridges and**  
**Tangents**  
**Alignment Option**

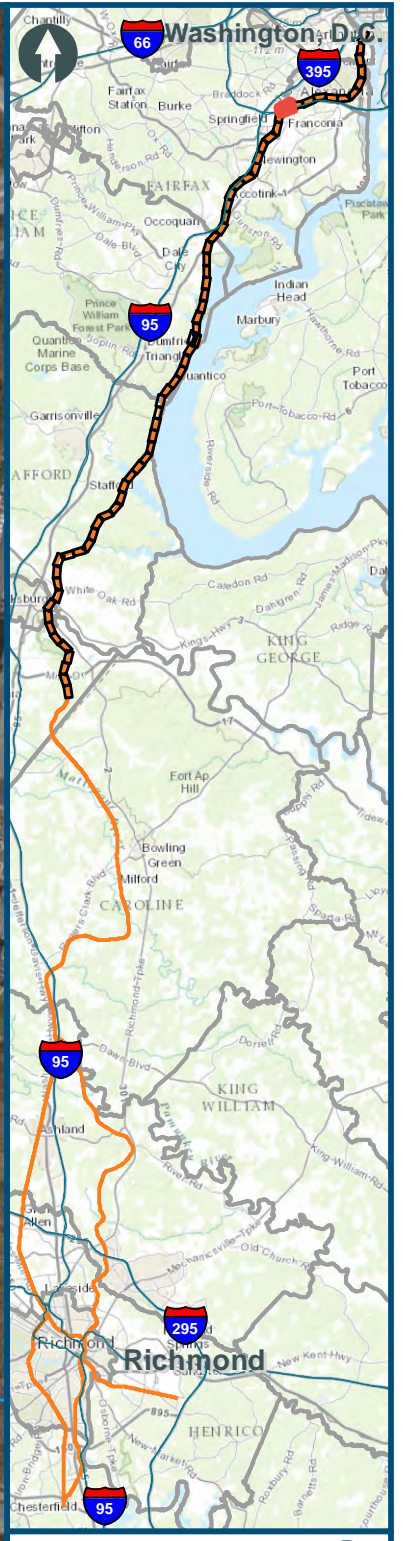
\\dlmain\GIS\_DATA\GIS\Projects\011545\_VA\DeptofRails-PublicTransportation\0239056\_RAPS-4AIDev-ConceptEng\map\_docs\mxd\Alt\_Tech\_Report\DC2RVA\_Ch6\_Appendices\NOV\_HoldBridgesandTangents\_Alignments\_11x17.mxd | Last Updated: 11.04.2015



- Legend**
- WMATA
  - CSXT Mileposts
  - Existing Track
  - New Track
  - Shifted Track
  - CSXT Right-of-Way
  - Streams

**Figure I-11**  
**Northern Virginia**  
**Hold Bridges and**  
**Tangents**  
**Alignment Option**

\\dlismain\GIS\_DATA\GIS\Projects\11545\_VA\DeptofRails-PublicTransportation\0239056\_RAPS-4\AIDev-Concept\Eng\map\_docs\mxd\Alt\_Tech\_Report\DC2RVA\_Ch6\_Appendices\_NOV\_HoldBridgesandTangents\_Alignments\_11x17.mxd | Last Updated: 11.04.2015

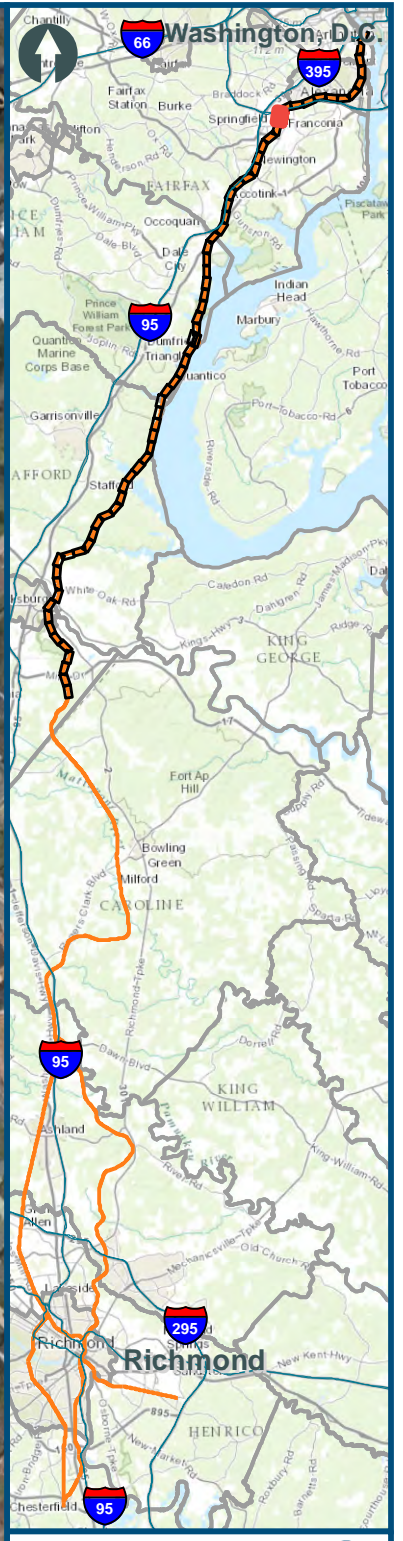
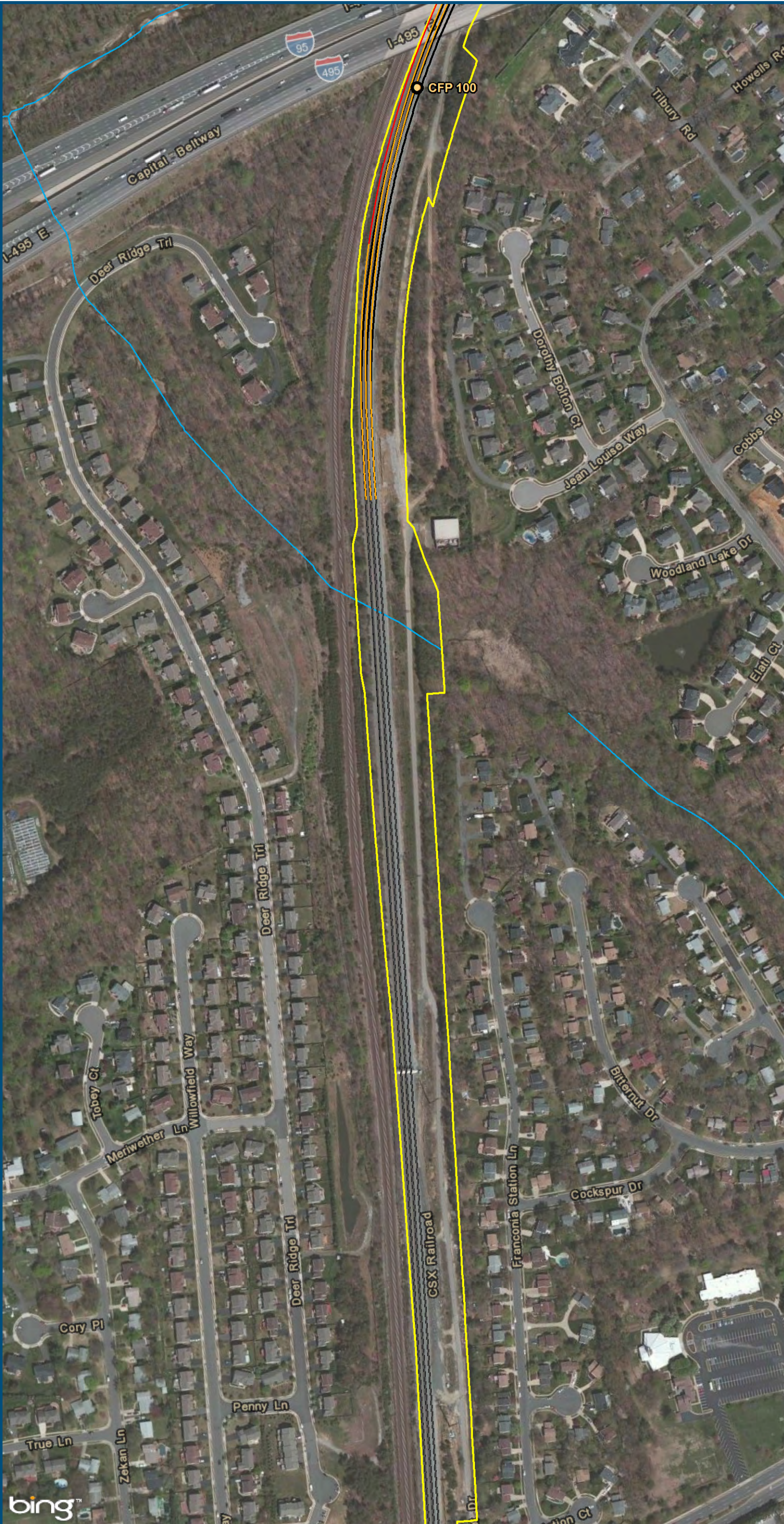


0 150 300  
Feet  
1 inch = 300 feet  
@ 11 x 17 inches  
Projection: Lambert Conformal Conic  
State Plane Virginia North FIPS 4501 Feet  
North American Datum of 1983  
Imagery: Bing Map Aerial

- Legend**
- CSXT Mileposts
  - Existing Track
  - New Track
  - Shifted Track
  - CSXT Right-of-Way
  - Streams

**Figure I-12**  
**Northern Virginia**  
**Hold Bridges and**  
**Tangents**  
**Alignment Option**

\\dlismain\GIS\_DATA\GIS\Projects\11545\_VA\DeptofRails-PublicTransportation\0239056\_RAPS-4\AIDev-Concept\Eng\map\_docs\mxd\Alt\_Tech\_Report\DC2RVA\_Ch6\_Appendices\_NOV\_HoldBridgesandTangents\_Alignments\_11x17.mxd | Last Updated: 11.04.2015



0 150 300  
Feet  
1 inch = 300 feet  
@ 11 x 17 inches  
Projection: Lambert Conformal Conic  
State Plane Virginia North FIPS 4501 Feet  
North American Datum of 1983  
Imagery: Bing Map Aerial

- Legend**
- CSXT Mileposts
  - Existing Track
  - New Track
  - Shifted Track
  - CSXT Right-of-Way
  - Streams

**Figure I-13**  
**Northern Virginia**  
**Hold Bridges and**  
**Tangents**  
**Alignment Option**

\\dlismain\GIS\_DATA\GIS\Projects\11545\_VA\DeptofRails-PublicTransportation\0239056\_RAPS-4\AIDev-ConceptEng\map\_docs\mxd\Alt\_Tech\_Report\DC2RVA\_Ch6\_Appendices\_NOV\_HoldBridgesandTangents\_Alignments\_11x17.mxd | Last Updated: 11.04.2015



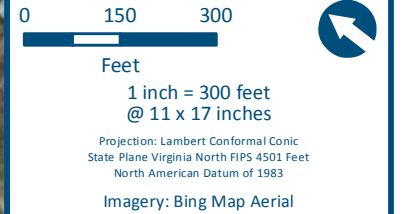
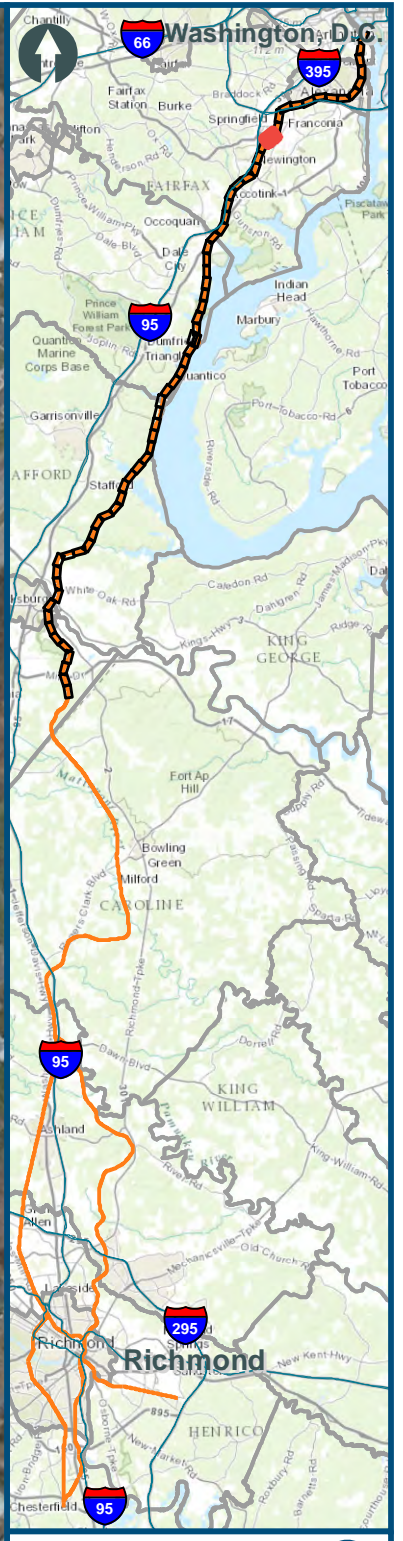
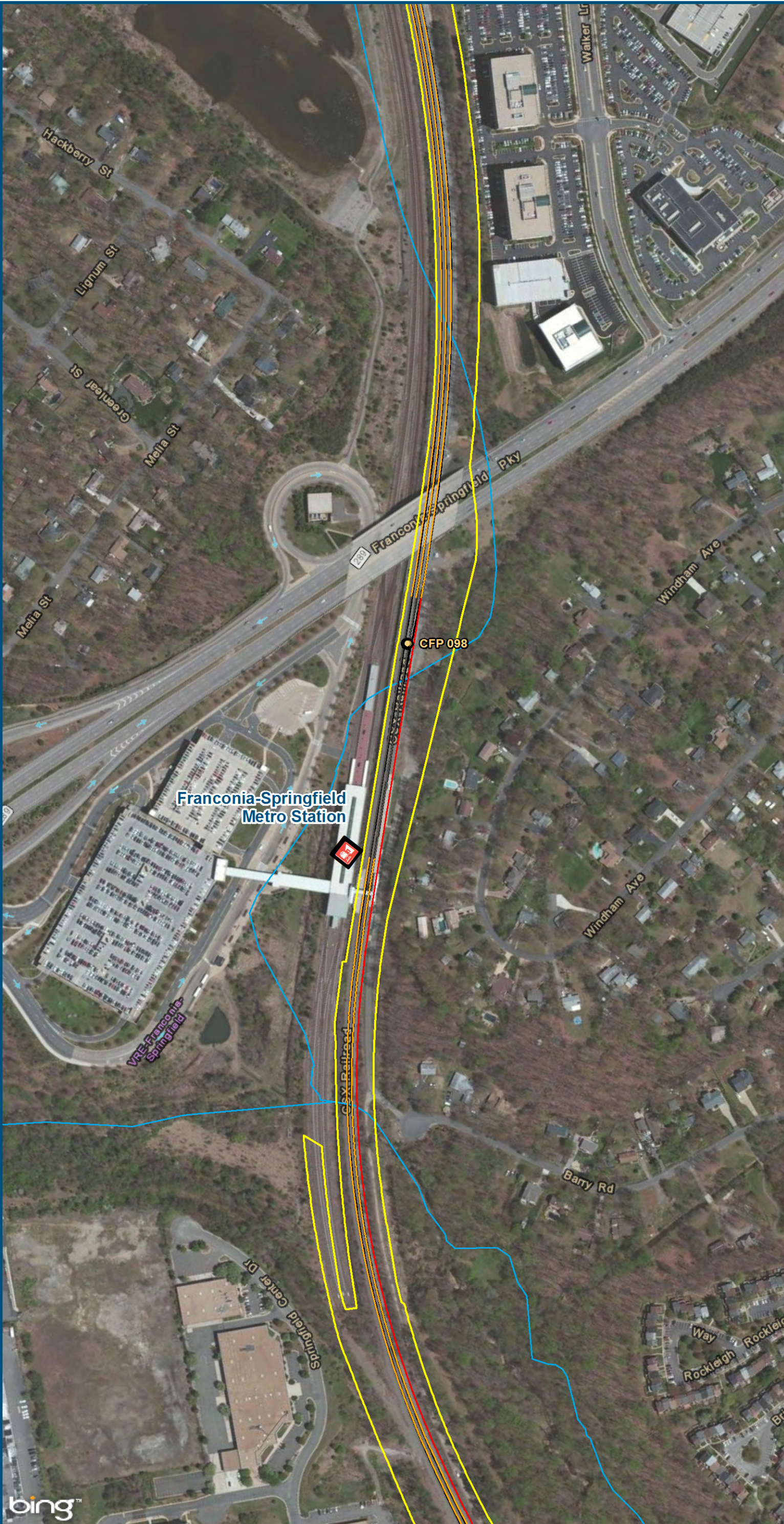
0 150 300  
Feet  
1 inch = 300 feet  
@ 11 x 17 inches  
Projection: Lambert Conformal Conic  
State Plane Virginia North FIPS 4501 Feet  
North American Datum of 1983  
Imagery: Bing Map Aerial








**Legend**

- CSXT Mileposts
- Existing Track
- New Track
- Shifted Track
- CSXT Right-of-Way
- Streams

**Figure I-14**  
**Northern Virginia**  
**Hold Bridges and**  
**Tangents**  
**Alignment Option**

\\dlismain\GIS\_DATA\GIS\Projects\011545\_VA\DeptofRails-PublicTransportation\0239056\_RAPS-4\AIDev-ConceptEng\map\_docs\mxd\Alt\_Tech\_Report\DC2RVA\_Chr6\_Appendices\_NOV\_HoldBridgesandTangents\_Alignments\_11x17.mxd | Last Updated: 11.04.2015

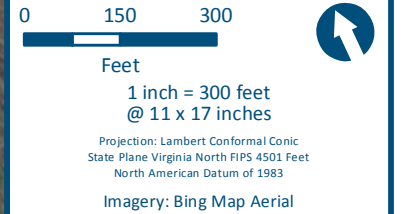
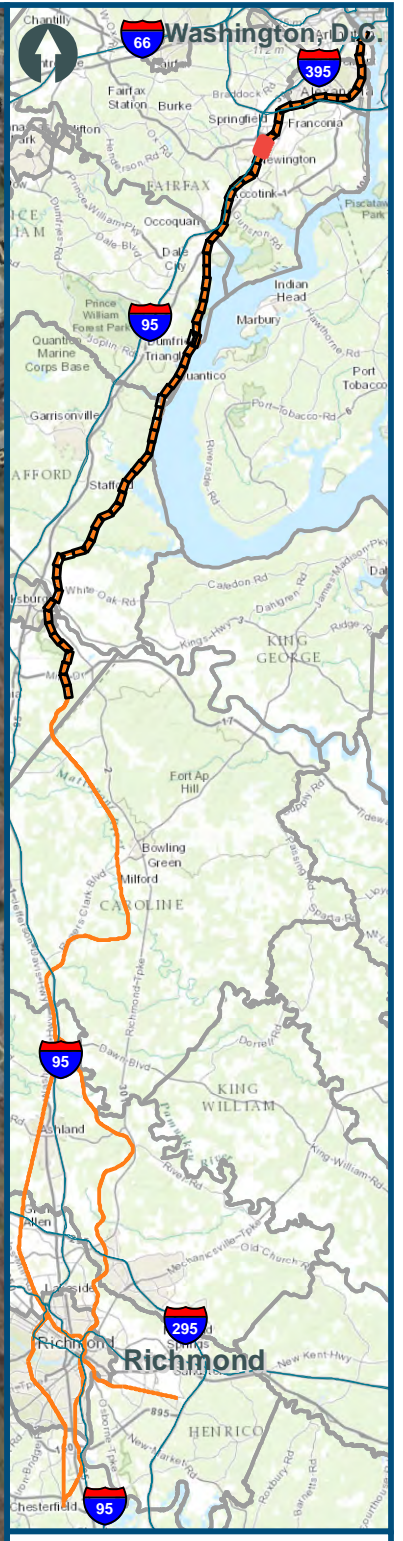
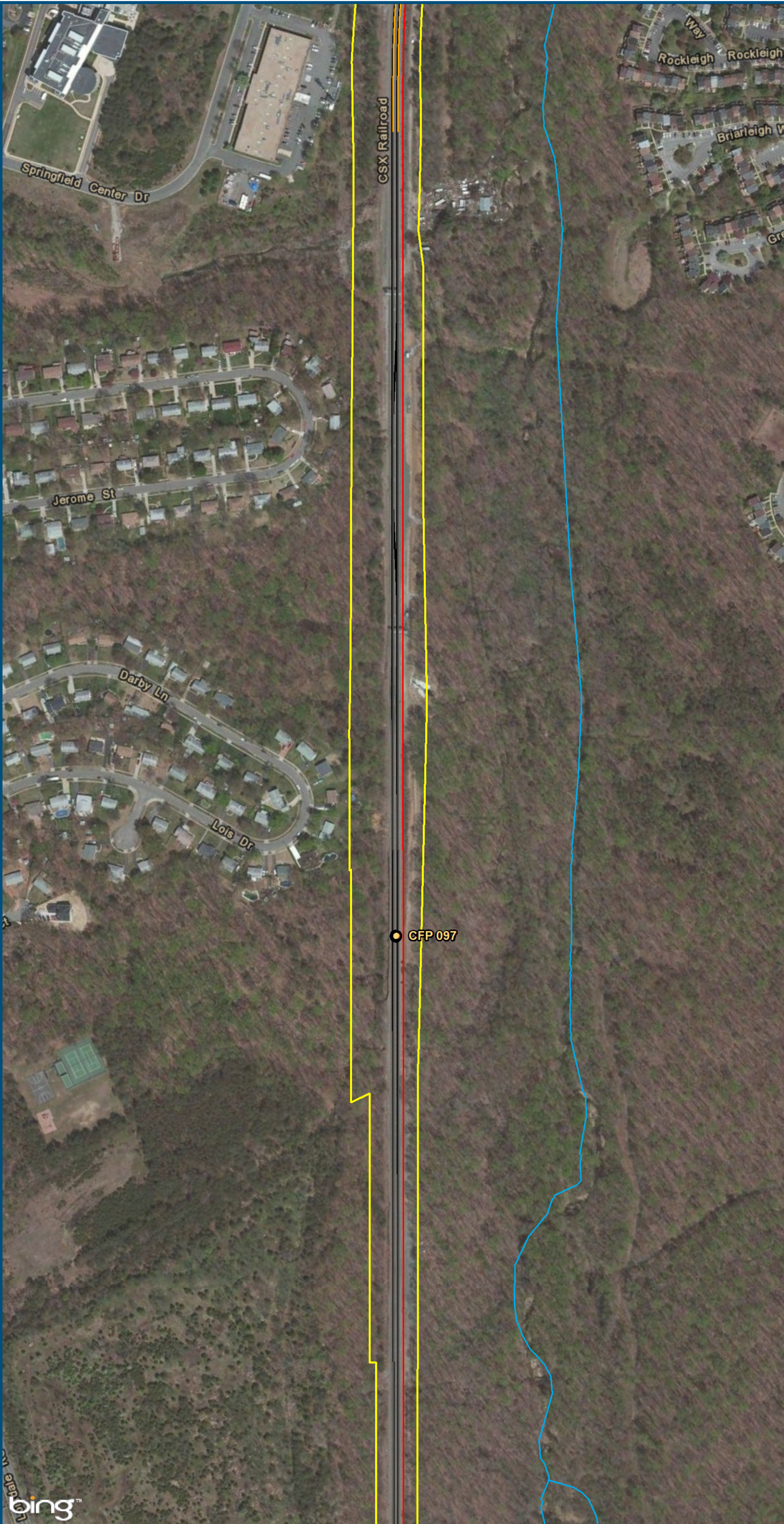


- Legend**
-  VRE/Wmata Station
  -  CSXT Mileposts
  -  Existing Track
  -  New Track
  -  Shifted Track
  -  CSXT Right-of-Way
  -  Streams

**Figure I-15**  
**Northern Virginia**  
**Hold Bridges and**  
**Tangents**  
**Alignment Option**



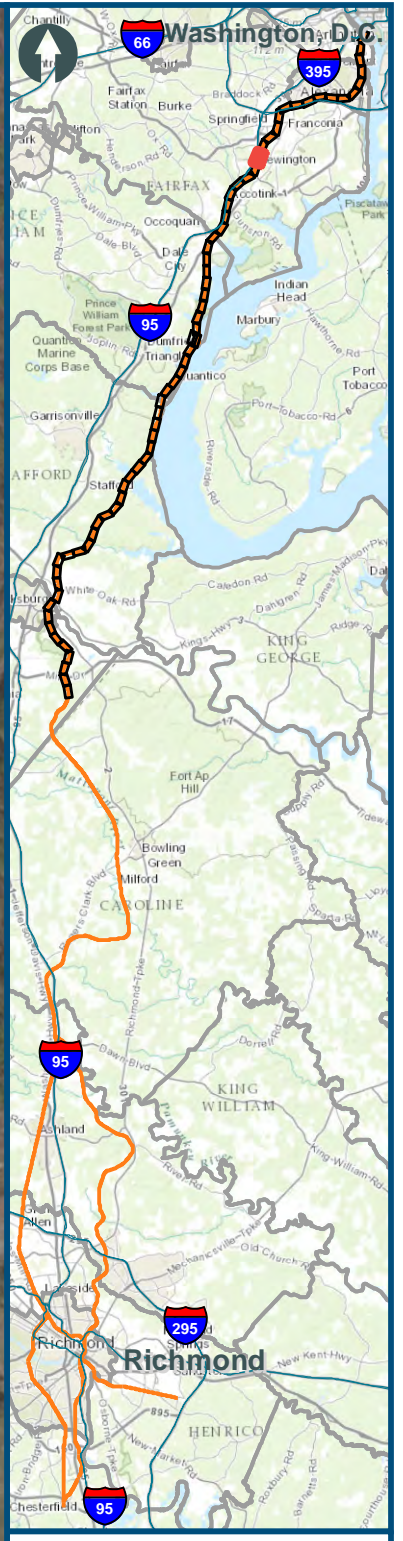
\\dlismain\GIS\_DATA\GIS\Projects\011545\_VA\DeptofRails-PublicTransportation\0239056\_RAPS-4\AIDev-ConceptEng\map\_docs\mxd\Alt\_Tech\_Report\DC2RVA\_Chr6\_Appendices\_NOV\_HoldBridgesandTangents\_Alignments\_11x17.mxd | Last Updated: 11.04.2015



- Legend**
- CSXT Mileposts
  - Existing Track
  - New Track
  - Shifted Track
  - CSXT Right-of-Way
  - Streams

**Figure I-16**  
**Northern Virginia**  
**Hold Bridges and**  
**Tangents**  
**Alignment Option**

\\dlismain\GIS\_DATA\GIS\Projects\011545\_VA\DeptofRails-PublicTransportation\0239056\_RAPS-4\AIDev-ConceptEng\map\_docs\mxd\Alt\_Tech\_Report\DC2RVA\_Ch6\_Appendices\_NOV\_HoldBridgesandTangents\_Alignments\_11x17.mxd | Last Updated: 11.04.2015



0 150 300  
Feet  
1 inch = 300 feet  
@ 11 x 17 inches  
Projection: Lambert Conformal Conic  
State Plane Virginia North FIPS 4501 Feet  
North American Datum of 1983  
Imagery: Bing Map Aerial

- Legend**
- CSXT Mileposts
  - Existing Track
  - New Track
  - Shifted Track
  - ▭ CSXT Right-of-Way
  - Streams

**Figure I-17**  
**Northern Virginia**  
**Hold Bridges and**  
**Tangents**  
**Alignment Option**

\\dlismain\GIS\_DATA\GIS\Projects\11545\_VA\DeptofRails-Public\Transportation\0239056\_RAPS-4\AIDev-Concept\Eng\map\_docs\mxd\Alt\_Tech\_Report\DC2RVA\_Ch6\_Appendices\_NOV\_HoldBridgesandTangents\_Alignments\_11x17.mxd | Last Updated: 11.04.2015

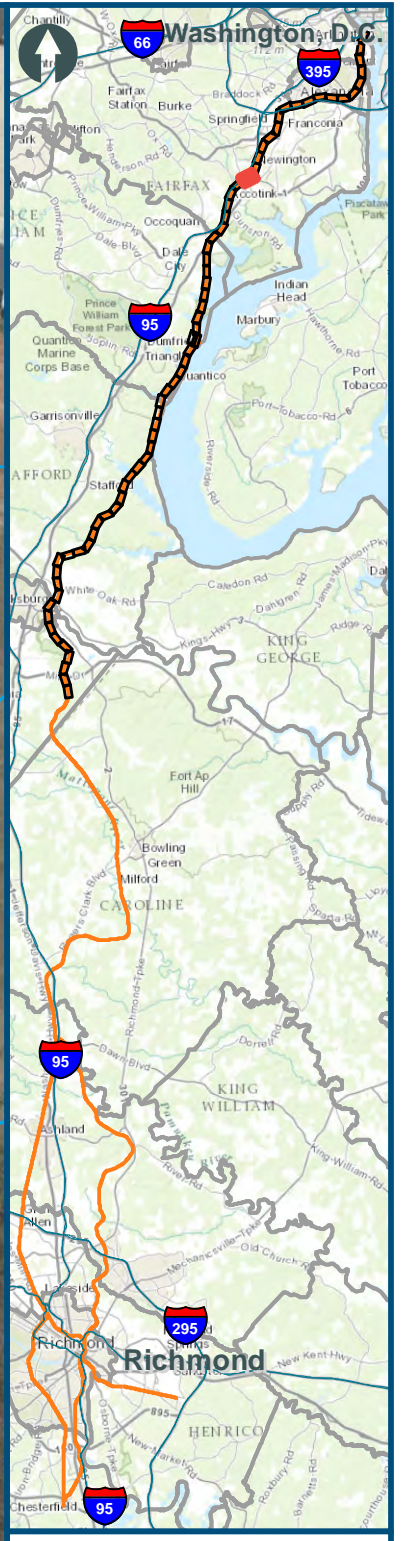


0 150 300  
Feet  
1 inch = 300 feet  
@ 11 x 17 inches  
Projection: Lambert Conformal Conic  
State Plane Virginia North FIPS 4501 Feet  
North American Datum of 1983  
Imagery: Bing Map Aerial

- Legend**
- CSXT Mileposts
  - Existing Track
  - New Track
  - Shifted Track
  - CSXT Right-of-Way
  - Streams

**Figure I-18**  
**Northern Virginia**  
**Hold Bridges and**  
**Tangents**  
**Alignment Option**

\\dlismain\GIS\_DATA\GIS\Projects\011545\_VA\DeptofRails-PublicTransportation\0239056\_RAPS-4\AIDev-Concept\Eng\map\_docs\mxd\Alt\_Tech\_Report\DC2RVA\_Chr6\_Appendices\_NOV\_HoldBridgesandTangents\_Alignments\_11x17.mxd | Last Updated: 11.04.2015

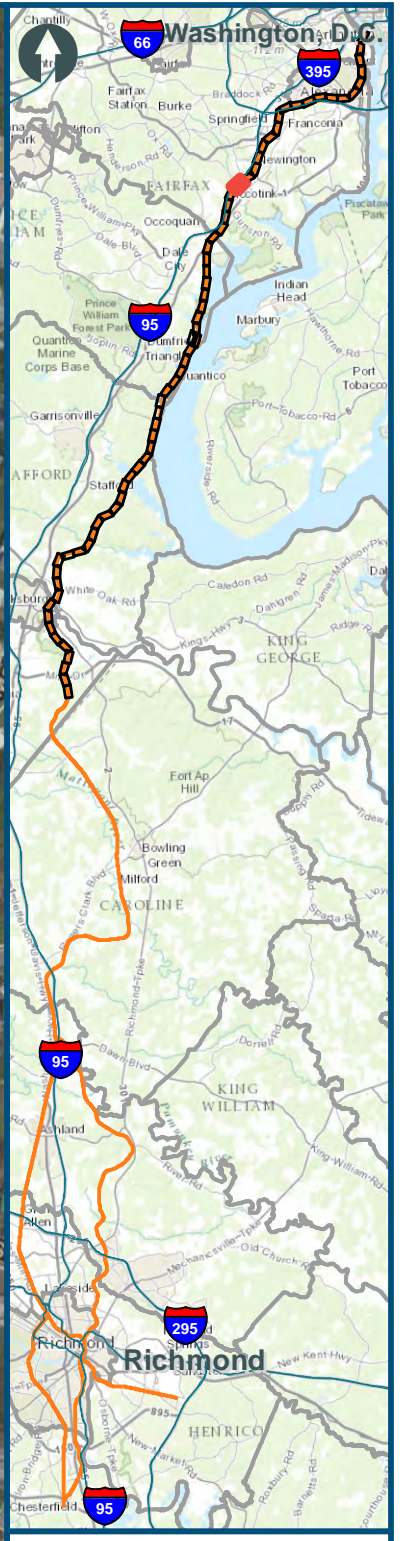
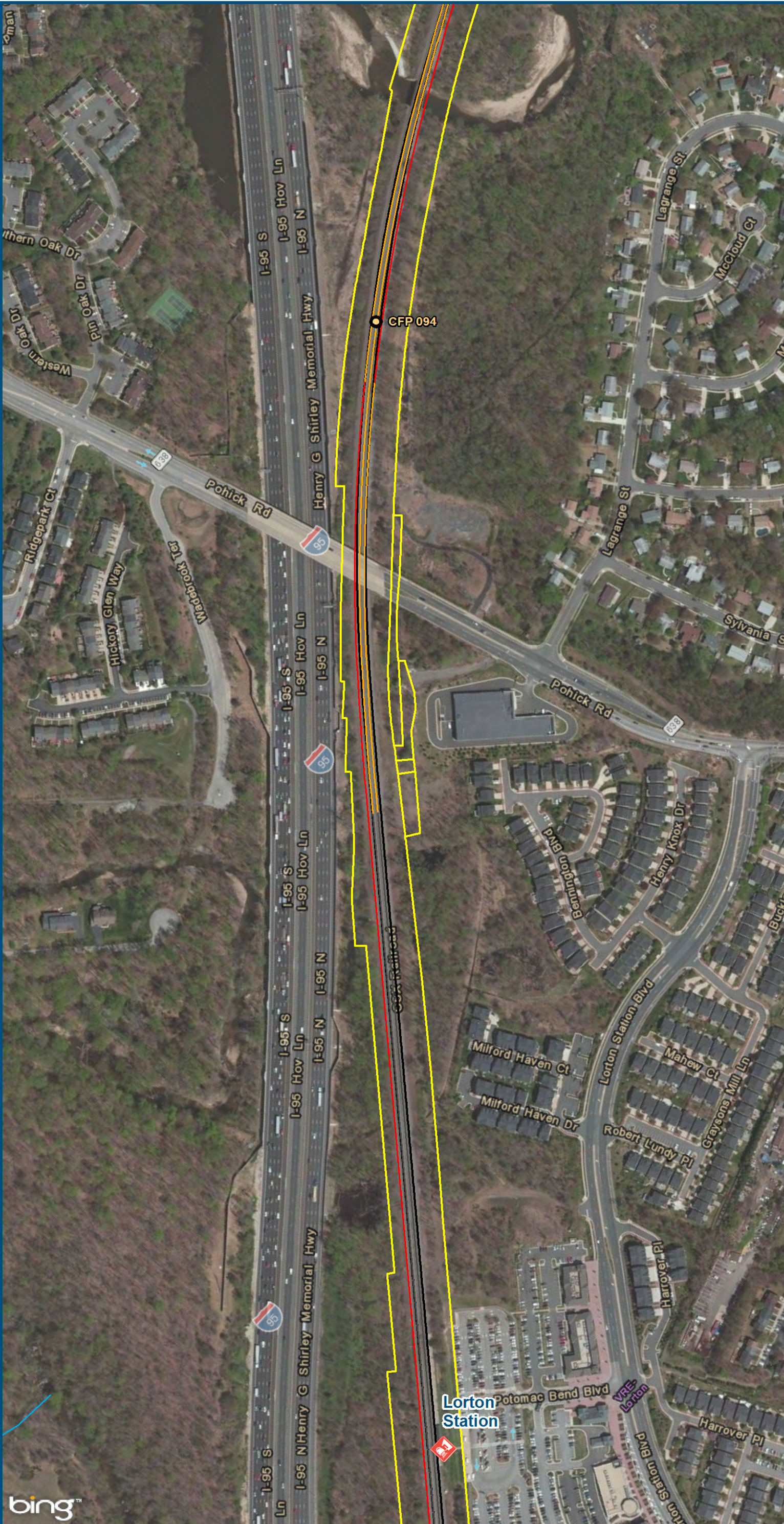


0 150 300  
Feet  
1 inch = 300 feet  
@ 11 x 17 inches  
Projection: Lambert Conformal Conic  
State Plane Virginia North FIPS 4501 Feet  
North American Datum of 1983  
Imagery: Bing Map Aerial

- Legend**
- CSXT Mileposts
  - Existing Track
  - New Track
  - Shifted Track
  - CSXT Right-of-Way
  - Streams

**Figure I-19**  
**Northern Virginia**  
**Hold Bridges and**  
**Tangents**  
**Alignment Option**

\\dlmain\GIS\_DATA\GIS\Projects\011545\_VA\DeptofRails-PublicTransportation\0239056\_RAPS-4\AIDev-ConceptEng\map\_docs\mxd\Alt\_Tech\_Report\DC2RVA\_Cht6\_Appendices\_NOV\_HoldBridgesandTangents\_Alignments\_11x17.mxd | Last Updated: 11.04.2015



0 150 300  
Feet  
1 inch = 300 feet  
@ 11 x 17 inches  
Projection: Lambert Conformal Conic  
State Plane Virginia North FIPS 4501 Feet  
North American Datum of 1983  
Imagery: Bing Map Aerial

- Legend**
- VRE Station
  - CSXT Mileposts
  - Existing Track
  - New Track
  - Shifted Track
  - CSXT Right-of-Way
  - Streams

**Figure I-20**  
**Northern Virginia**  
**Hold Bridges and**  
**Tangents**  
**Alignment Option**

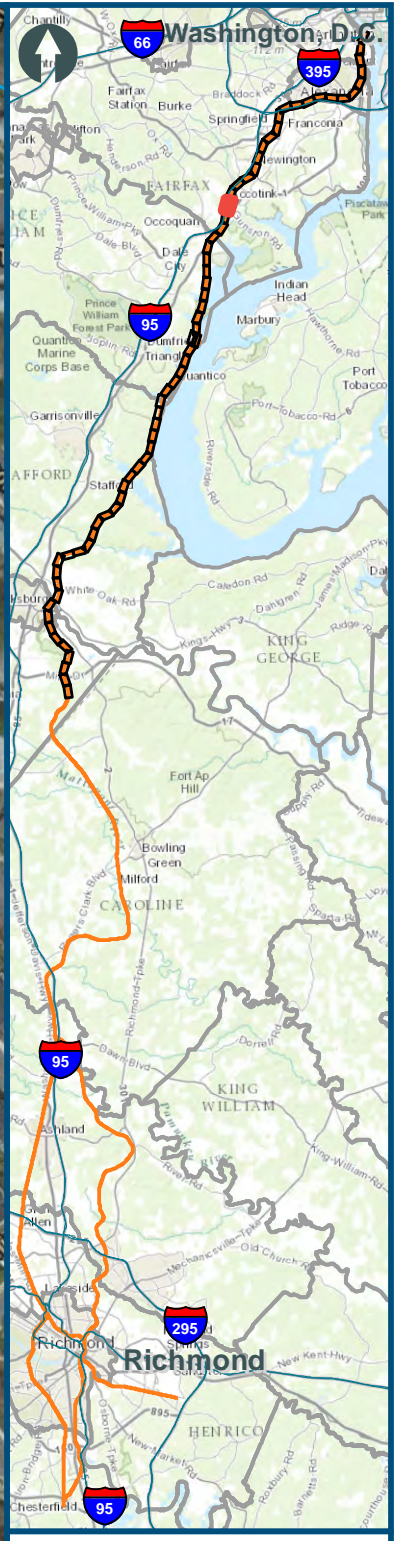
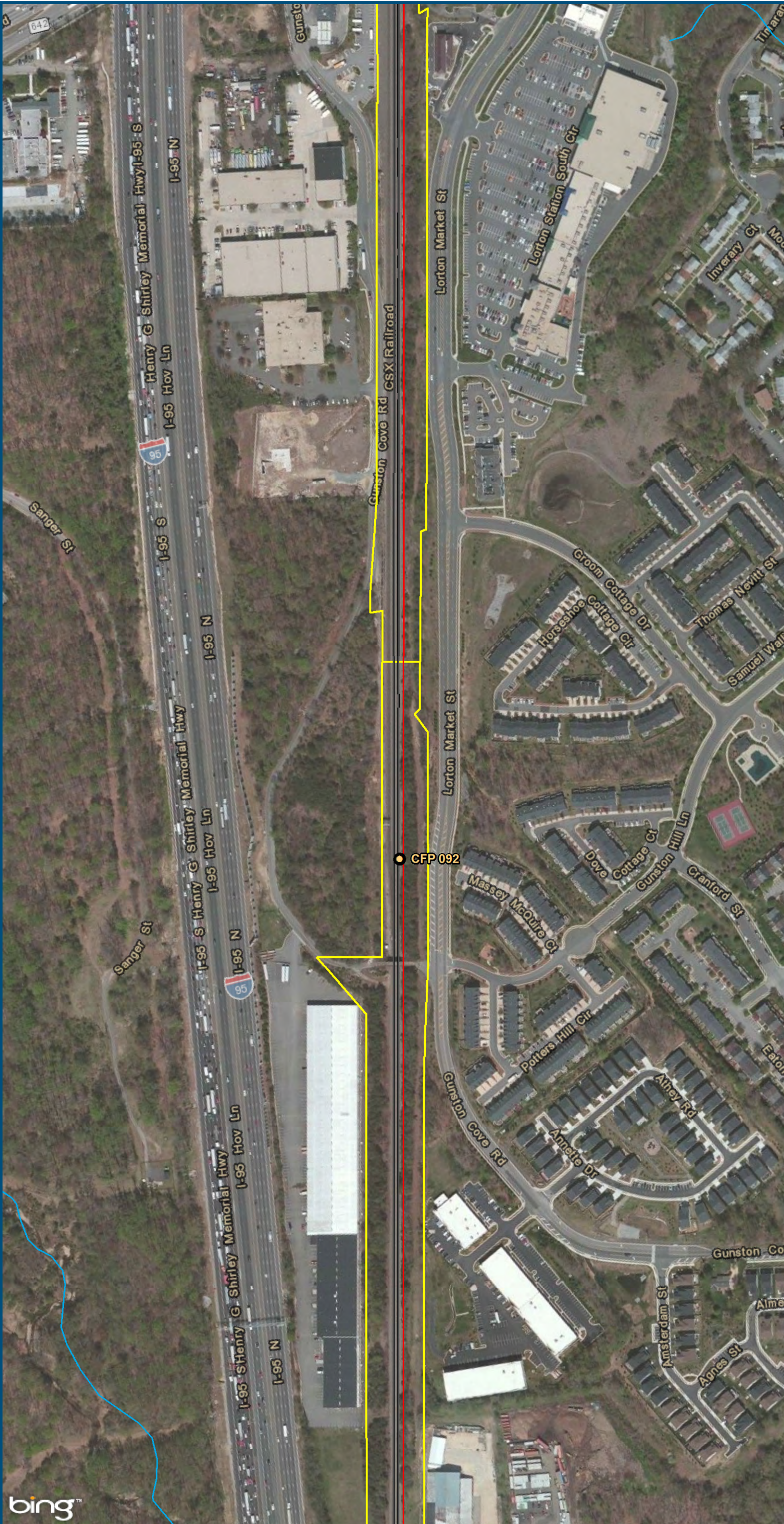
\\dlismain\GIS\_DATA\GIS\Projects\011545\_VA\DeptofRails-PublicTransportation\0239056\_RAPS-4\AllDev-ConceptEng\map\_docs\mxd\Alt\_Tech\_Report\DC2RVA\_Ch6\_Appendices\_NOV\_HoldBridgesandTangents\_Alignments\_11x17.mxd | Last Updated: 11.04.2015



0 150 300  
 Feet  
 1 inch = 300 feet  
 @ 11 x 17 inches  
 Projection: Lambert Conformal Conic  
 State Plane Virginia North FIPS 4501 Feet  
 North American Datum of 1983  
 Imagery: Bing Map Aerial

- Legend**
- Amtrak Station
  - VRE Station
  - CSXT Mileposts
  - Existing Track
  - New Track
  - Shifted Track
  - CSXT Right-of-Way
  - Streams

**Figure I-21**  
**Northern Virginia**  
**Hold Bridges and**  
**Tangents**  
**Alignment Option**



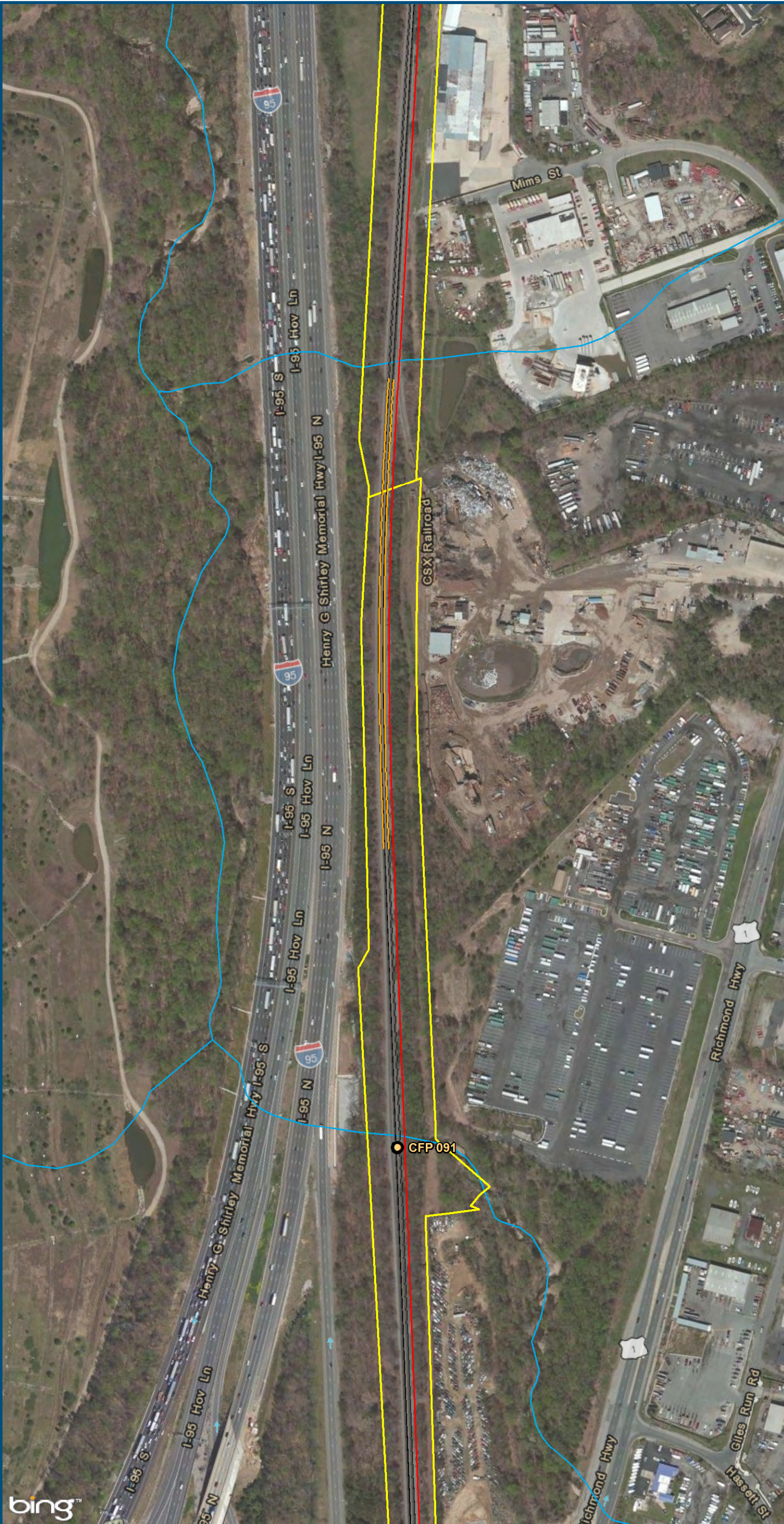
0 150 300  
Feet  
1 inch = 300 feet  
@ 11 x 17 inches  
Projection: Lambert Conformal Conic  
State Plane Virginia North FIPS 4501 Feet  
North American Datum of 1983  
Imagery: Bing Map Aerial

**Legend**

- CSXT Mileposts
- Existing Track
- New Track
- Shifted Track
- CSXT Right-of-Way
- Streams

**Figure I-22**  
**Northern Virginia**  
**Hold Bridges and**  
**Tangents**  
**Alignment Option**

\\dlismain\GIS\_DATA\GIS\Projects\011545\_VA\DeptofRails-PublicTransportation\0239056\_RAPS-4\AIDev-ConceptEng\map\_docs\mxd\Alt\_Tech\_Report\DC2RVA\_Cht6\_Appendices\_NOV\_HoldBridgesandTangents\_Alignments\_11x17.mxd | Last Updated: 11.04.2015



0 150 300  
Feet  
1 inch = 300 feet  
@ 11 x 17 inches  
Projection: Lambert Conformal Conic  
State Plane Virginia North FIPS 4501 Feet  
North American Datum of 1983  
Imagery: Bing Map Aerial

- Legend**
- CSXT Mileposts
  - Existing Track
  - New Track
  - Shifted Track
  - CSXT Right-of-Way
  - Streams

**Figure I-23**  
**Northern Virginia**  
**Hold Bridges and**  
**Tangents**  
**Alignment Option**



\\dlismain\GIS\_DATA\GIS\Projects\11545\_VA\DeptofRails-PublicTransportation\0239056\_RAPS-4\AllDev-Concept\Eng\map\_docs\mxd\Alt\_Tech\_Report\DC2RVA\_Chr6\_Appendices\_NOV\_HoldBridgesandTangents\_Alignments\_11x17.mxd | Last Updated: 11.04.2015



0 150 300  
Feet  
1 inch = 300 feet  
@ 11 x 17 inches  
Projection: Lambert Conformal Conic  
State Plane Virginia North FIPS 4501 Feet  
North American Datum of 1983  
Imagery: Bing Map Aerial

- Legend**
- CSXT Mileposts
  - Existing Track
  - New Track
  - Shifted Track
  - CSXT Right-of-Way
  - Streams

**Figure I-24**  
**Northern Virginia**  
**Hold Bridges and**  
**Tangents**  
**Alignment Option**

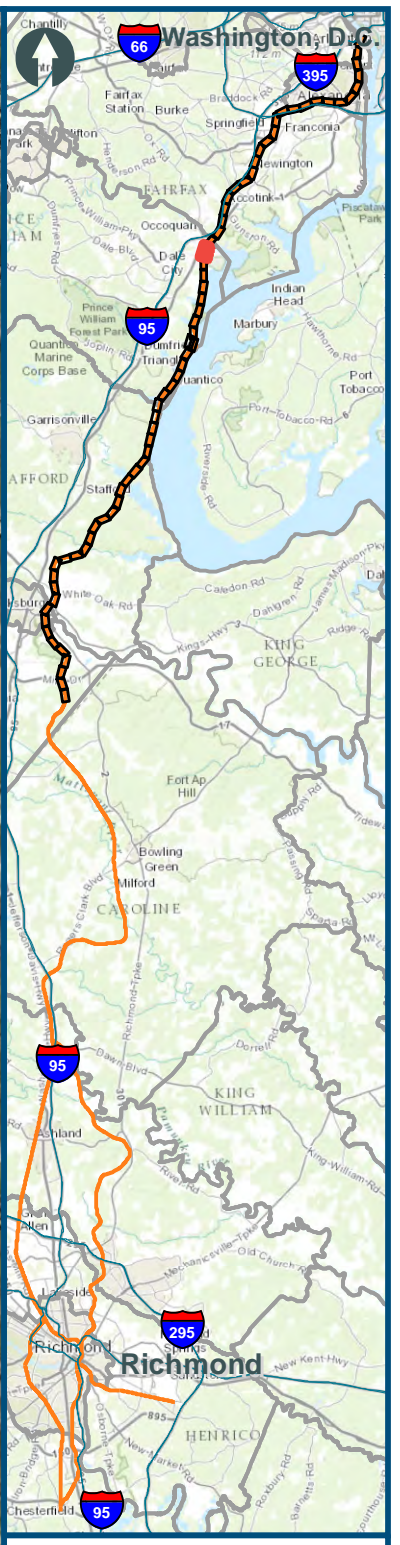
\\dlismain\GIS\_DATA\GIS\Projects\011545\_VA Dept of Rails-PublicTransportation\0239056\_RAPS-4AIDeV-ConceptEng\map\_docs\mxd\Alt\_Tech\_Report\DC2RVA\_Ch6\_Appendices\_NOV\_HoldBridgesandTangents\_Alignments\_11x17.mxd | Last Updated: 11.04.2015



0 150 300  
Feet  
1 inch = 300 feet  
@ 11 x 17 inches  
Projection: Lambert Conformal Conic  
State Plane Virginia North FIPS 4501 Feet  
North American Datum of 1983  
Imagery: Bing Map Aerial

- Legend**
- CSXT Mileposts
  - Existing Track
  - New Track
  - Shifted Track
  - CSXT Right-of-Way
  - Streams

**Figure I-25**  
**Northern Virginia**  
**Hold Bridges and**  
**Tangents**  
**Alignment Option**



0 150 300  
 Feet  
 1 inch = 300 feet  
 @ 11 x 17 inches  
 Projection: Lambert Conformal Conic  
 State Plane Virginia North FIPS 4501 Feet  
 North American Datum of 1983  
 Imagery: Bing Map Aerial

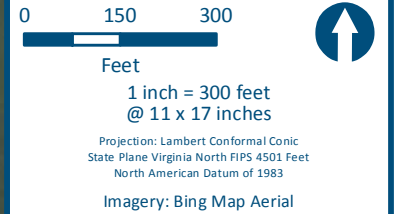
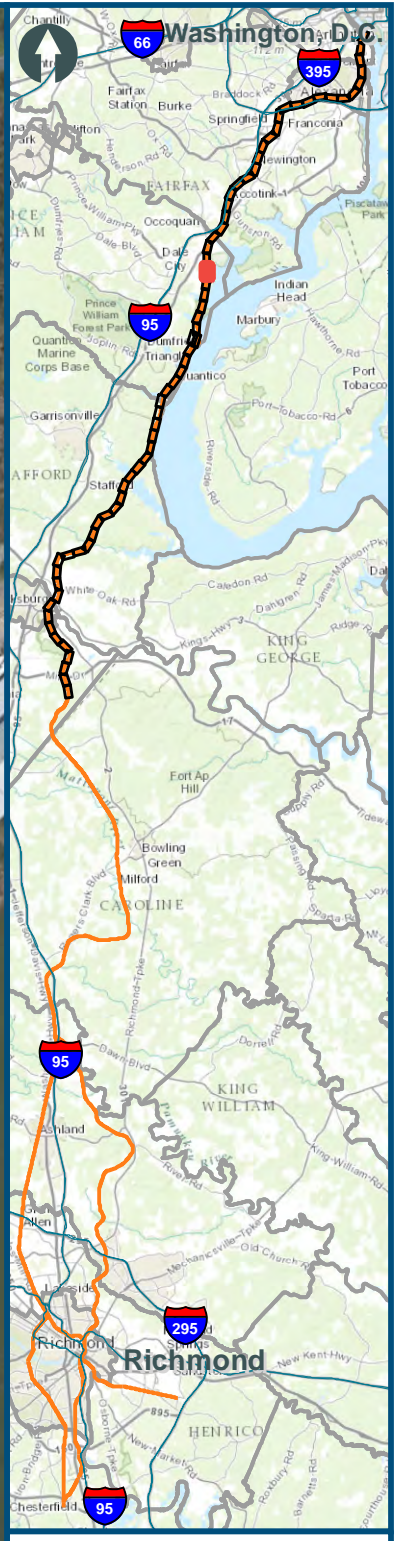
- Legend**
- Amtrak/VRE Station
  - CSXT Mileposts
  - Existing Track
  - New Track
  - Shifted Track
  - CSXT Right-of-Way
  - Streams

**Figure I-26**  
**Northern Virginia**  
**Hold Bridges and**  
**Tangents**  
**Alignment Option**

\\dlismain\GIS\_DATA\GIS\Projects\011545\_VA\DeptofRails-PublicTransportation\0239056\_RAPS-4\AllDev-Concept\Eng\map\_docs\mxd\Alt\_Tech\_Report\DC2RVA\_Chr6\_Appendices\_NOV\_HoldBridgesandTangents\_Alignments\_11x17.mxd | Last Updated: 11.04.2015



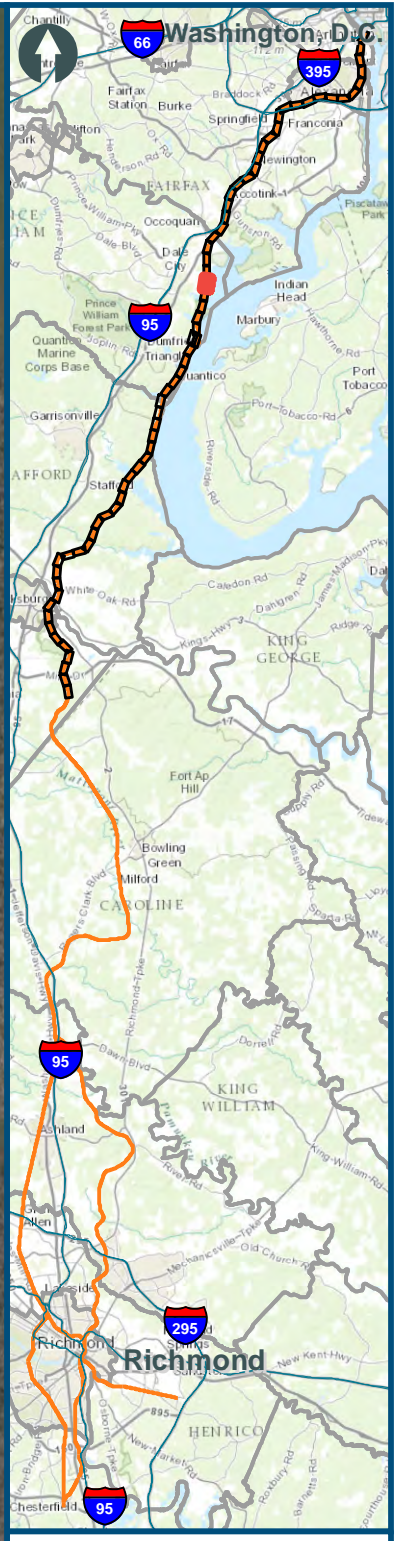
\\dlismain\GIS\_DATA\GIS\Projects\011545\_VA\DeptofRails-PublicTransportation\0239056\_RAPS-4\AIDev-Concept\Eng\map\_docs\mxd\Alt\_Tech\_Report\DC2RVA\_Ch6\_Appendices\_NOV\_HoldBridgesandTangents\_Alignments\_11x17.mxd | Last Updated: 11.04.2015



- Legend**
- CSXT Mileposts
  - Existing Track
  - New Track
  - Shifted Track
  - CSXT Right-of-Way
  - Streams

**Figure I-28**  
**Northern Virginia**  
**Hold Bridges and**  
**Tangents**  
**Alignment Option**

\\dlismain\GIS\_DATA\GIS\Projects\11545\_VA\DeptofRails-Public\Transportation\0239056\_RAPS-4\AIDev-Concept\Eng\map\_docs\mxd\Alt\_Tech\_Report\DC2RVA\_Ch6\_Appendices\_NOV\_HoldBridgesandTangents\_Alignments\_11x17.mxd | Last Updated: 11.04.2015

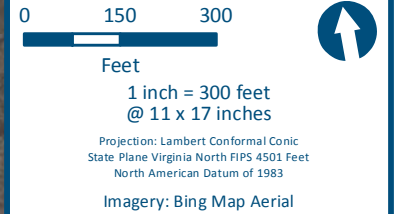
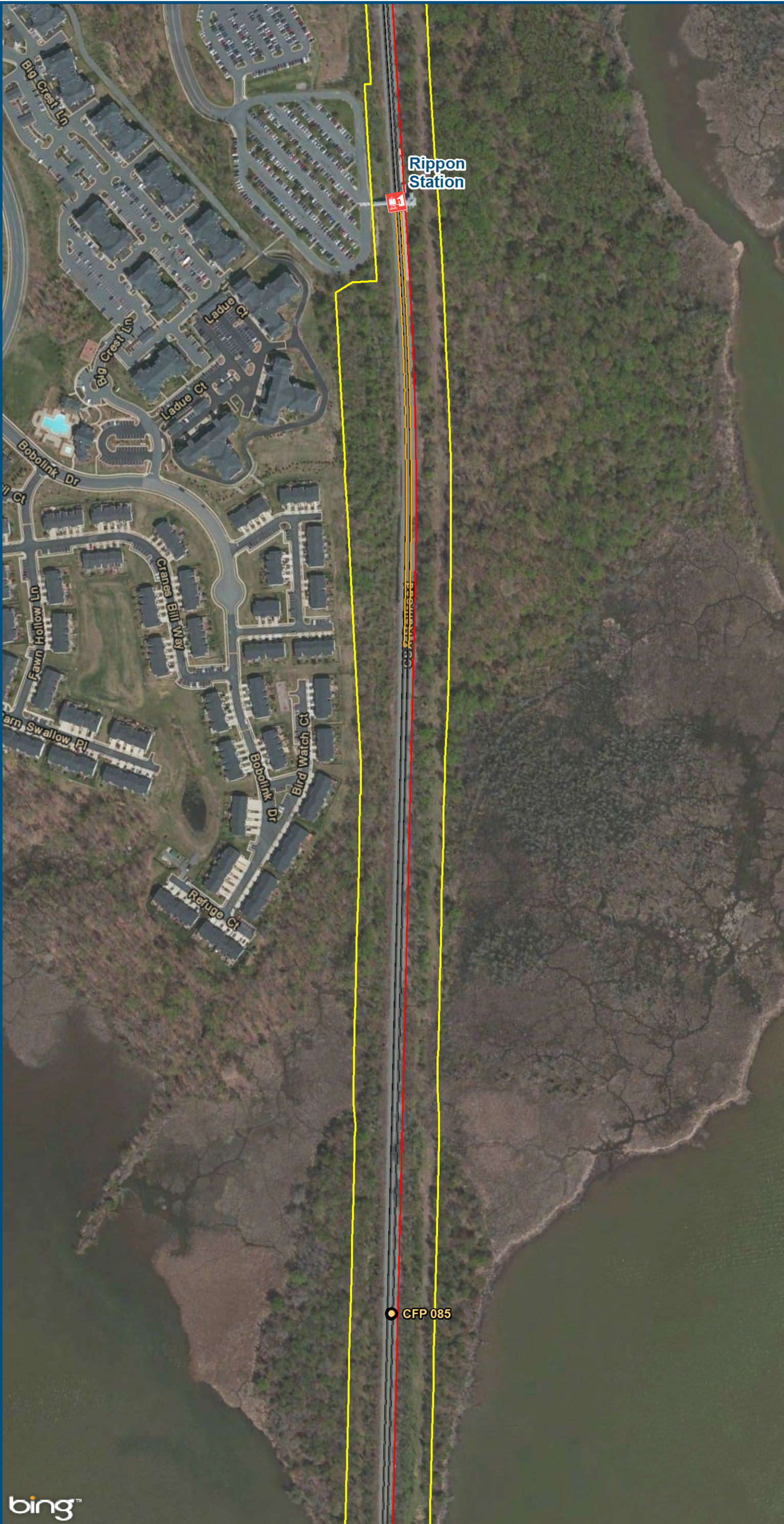


0 150 300  
Feet  
1 inch = 300 feet  
@ 11 x 17 inches  
Projection: Lambert Conformal Conic  
State Plane Virginia North FIPS 4501 Feet  
North American Datum of 1983  
Imagery: Bing Map Aerial

- Legend**
- CSXT Mileposts
  - Existing Track
  - New Track
  - Shifted Track
  - CSXT Right-of-Way
  - Streams

**Figure I-29**  
**Northern Virginia**  
**Hold Bridges and**  
**Tangents**  
**Alignment Option**

\\dlismain\GIS\_DATA\GIS\Projects\011545\_VA\DeptofRails-PublicTransportation\02390506\_RAPS-4\AIDev-ConceptEng\map\_docs\mxd\Alt\_Tech\_Report\DC2RVA\_Cht6\_Appendices\_NOV\_HoldBridgesandTangents\_Alignments\_11x17.mxd | Last Updated: 11.04.2015



- Legend**
- VRE Station
  - CSXT Mileposts
  - Existing Track
  - New Track
  - Shifted Track
  - CSXT Right-of-Way
  - Streams

**Figure I-30**  
**Northern Virginia**  
**Hold Bridges and**  
**Tangents**  
**Alignment Option**

\\dlismain\GIS\_DATA\GIS\Projects\011545\_VA\DeptofRails-PublicTransportation\0239056\_RAPS-4\AIDev-ConceptEng\map\_docs\mxd\Alt\_Tech\_Report\DC2RVA\_Chr6\_Appendices\_NOV\_HoldBridgesandTangents\_Alignments\_11x17.mxd | Last Updated: 11.04.2015



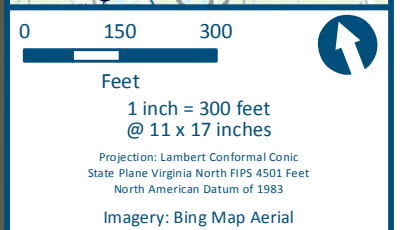
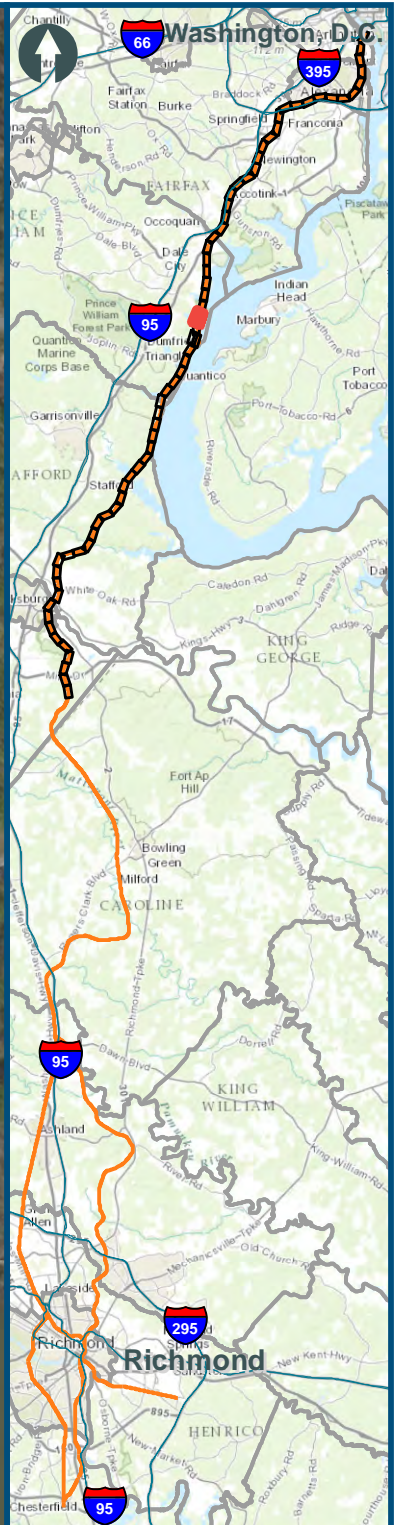
0 150 300  
Feet  
1 inch = 300 feet  
@ 11 x 17 inches  
Projection: Lambert Conformal Conic  
State Plane Virginia North FIPS 4501 Feet  
North American Datum of 1983  
Imagery: Bing Map Aerial







- Legend**
- CSXT Mileposts
  - Existing Track
  - New Track
  - Shifted Track
  - CSXT Right-of-Way
  - Streams

**Figure I-31**  
**Northern Virginia**  
**Hold Bridges and**  
**Tangents**  
**Alignment Option**



\\dlismain\GIS\_DATA\GIS\Projects\011545\_VA\DeptofRails-PublicTransportation\0239056\_RAPS-4\AIDev-ConceptEng\map\_docs\mxd\Alt\_Tech\_Report\DC2RVA\_Cht6\_Appendices\_NOV\_HoldBridgesandTangents\_Alignments\_11x17.mxd | Last Updated: 11.04.2015



- Legend**
-  CSXT Mileposts
  -  Existing Track
  -  New Track
  -  Shifted Track
  -  CSXT Right-of-Way
  -  Streams

**Figure I-32**  
**Northern Virginia**  
**Hold Bridges and**  
**Tangents**  
**Alignment Option**

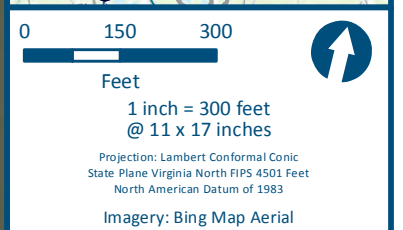
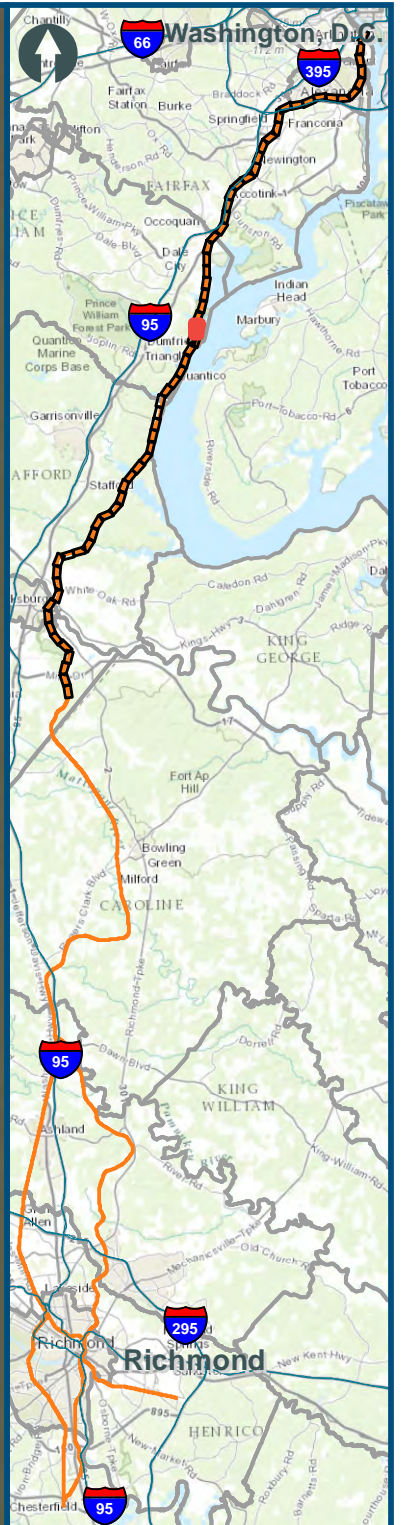
\\dlismain\GIS\_DATA\GIS\Projects\011545\_VA\DeptofRails-PublicTransportation\0239056\_RAPS-4\AIDev-ConceptEng\map\_docs\mxd\Alt\_Tech\_Report\DC2RVA\_Chr6\_Appendices\_NOV\_HoldBridgesandTangents\_Alignments\_11x17.mxd | Last Updated: 11.11.2015



Planned VRE  
- Potomac  
Shores Station

● CFP 083

Cherry Hill Rd



**Legend**

- VRE Station
- CSXT Mileposts
- Third Track Under Construction by CSXT
- Existing Track
- New Track
- Shifted Track
- CSXT Right-of-Way
- Streams

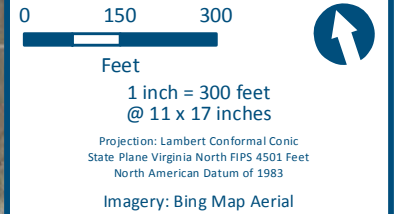
**Figure I-33**  
**Northern Virginia**  
**Hold Bridges and**  
**Tangents**  
**Alignment Option**



[www.DC2RVArail.com](http://www.DC2RVArail.com)



\\dlismain\GIS\_DATA\GIS\Projects\011545\_VA\DeptofRails-PublicTransportation\0239056\_RAPS-4\AIDev-ConceptEng\map\_docs\mxd\Alt\_Tech\_Report\DC2RVA\_Chr6\_Appendices\_NOV\_HoldBridgesandTangents\_Alignments\_11x17.mxd | Last Updated: 11.11.2015



- Legend**
- CSXT Mileposts
  - Third Track Under Construction by CSXT
  - Existing Track
  - New Track
  - Shifted Track
  - CSXT Right-of-Way
  - Streams

**Figure I-34**  
**Northern Virginia**  
**Hold Bridges and**  
**Tangents**  
**Alignment Option**