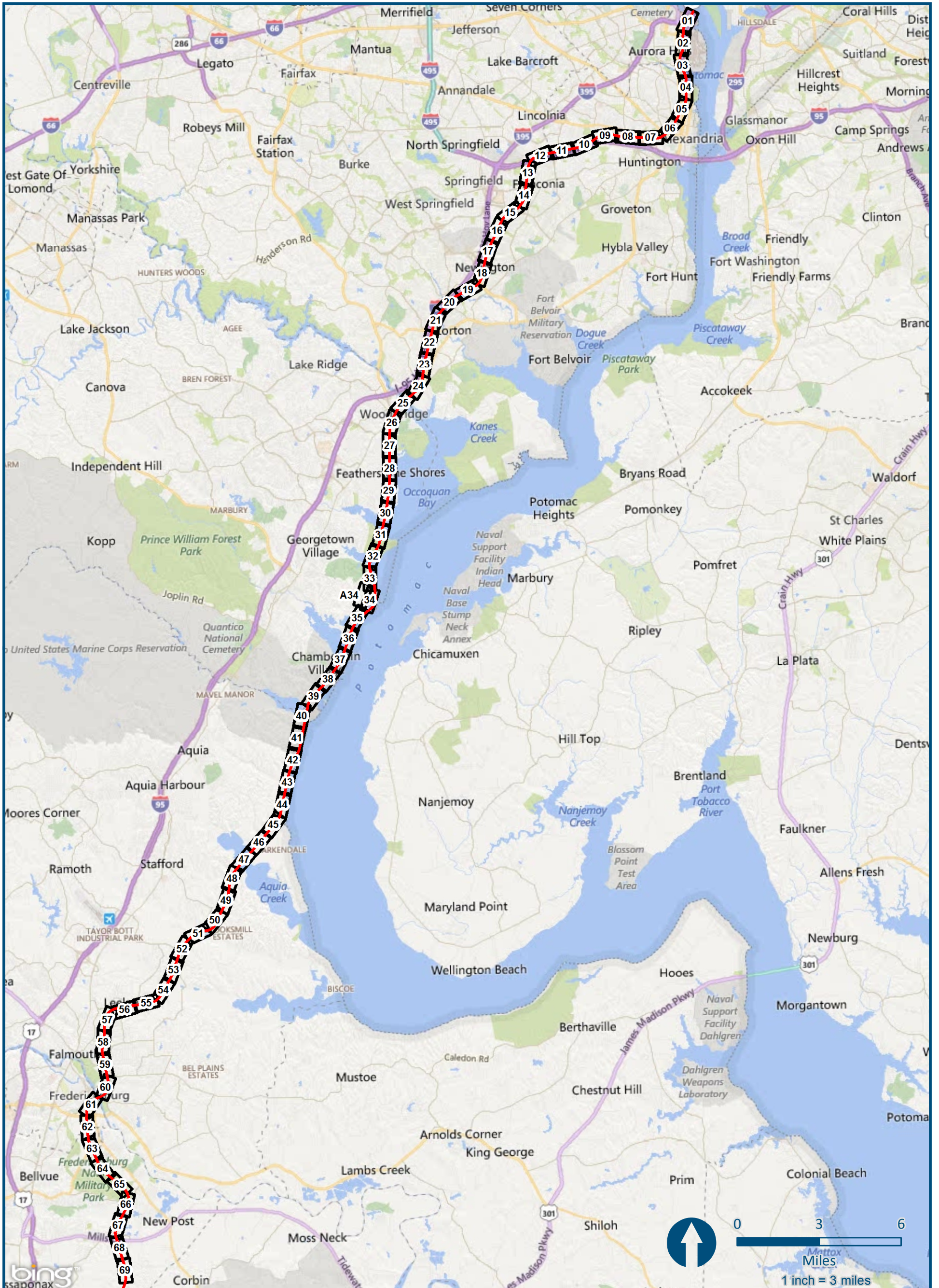
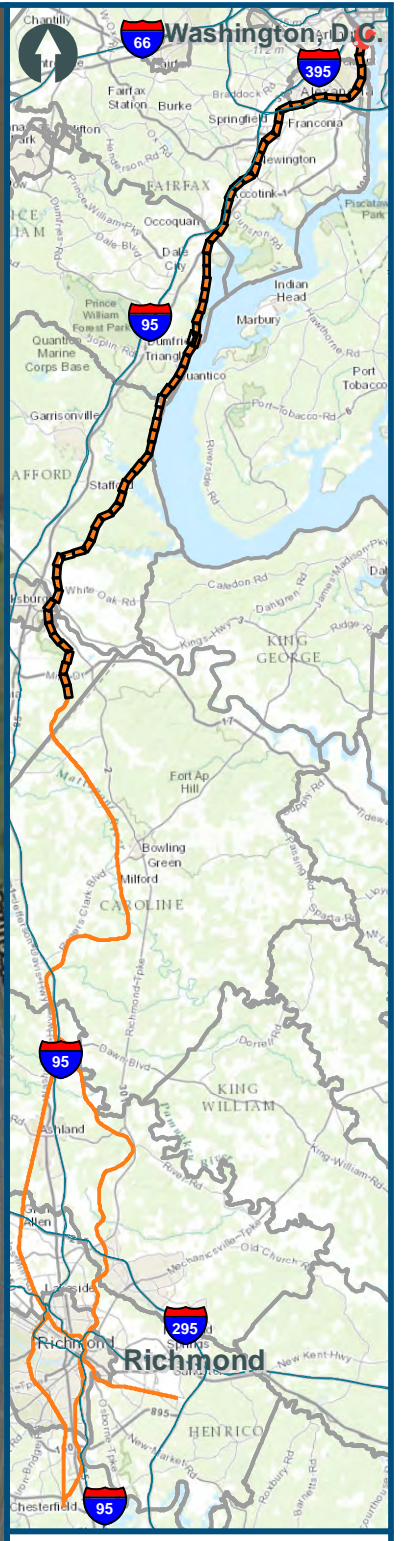


Northern Virginia (NOV) Project Section East Alignment Option Index Map



\\dlsmain\GIS_DATA\GIS\Projects\011545_VA\Dev\Rail\Public\Trans\Portation\0239056_RAPS-4\AI\Dev-Concept\Eng\map_docs\mxd\All_Tech_Report\DC2RVA_Appendix_AlignmentIndex_11x17.mxd | Last Updated: 11.05.2015

\\dlismain\GIS_DATA\GIS\Projects\11545_VA\DeptofRails-Public\Transportation\0239056_RAPS-4\AIDev-Concept\Eng\map_docs\mxd\Alt_Tech_Report\DC2RVA_Cht6_Appendices_NOV_East_Alignments_11x17.mxd | Last Updated: 11.04.2015



0 150 300
Feet
1 inch = 300 feet
@ 11 x 17 inches
Projection: Lambert Conformal Conic
State Plane Virginia North FIPS 4501 Feet
North American Datum of 1983
Imagery: Bing Map Aerial

- Legend**
- CSXT Mileposts
 - Existing Track
 - New Track
 - Shifted Track
 - CSXT Right-of-Way
 - Streams

Figure J-1
Northern Virginia
East
Alignment Option



0 150 300

Feet
1 inch = 300 feet
@ 11 x 17 inches

Projection: Lambert Conformal Conic
State Plane Virginia North FIPS 4501 Feet
North American Datum of 1983

Imagery: Bing Map Aerial

Legend

- WMATA
- VRE Station
- CSXT Mileposts
- Existing Track
- New Track
- Shifted Track
- CSXT Right-of-Way
- Streams

Figure J-2
Northern Virginia
East
Alignment Option

\\dlismain\GIS_DATA\GIS\Projects\11545_VA\DeptofRails-PublicTransportation\0239056_RAPS-4\IDev-ConceptEng\map_docs\mxd\Alt_Tech_Report\DC2RVA_Chr6_Appendices_NOV_East_Alignments_11x17.mxd | Last Updated: 11.04.2015



0 150 300
Feet
1 inch = 300 feet
@ 11 x 17 inches
Projection: Lambert Conformal Conic
State Plane Virginia North FIPS 4501 Feet
North American Datum of 1983
Imagery: Bing Map Aerial

- Legend**
- CSXT Mileposts
 - Existing Track
 - New Track
 - Shifted Track
 - CSXT Right-of-Way
 - Streams

Figure J-3
Northern Virginia
East
Alignment Option

\\dlismain\GIS_DATA\GIS\Projects\011545_VA\DeptofRails-PublicTransportation\0239056_RAPS-4\AIDev-ConceptEng\map_docs\mxd\Alt_Tech_Report\DC2RVA_Ch6_Appendices_NOV_East_Alignments_11x17.mxd | Last Updated: 11.04.2015

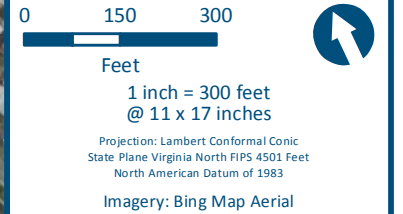
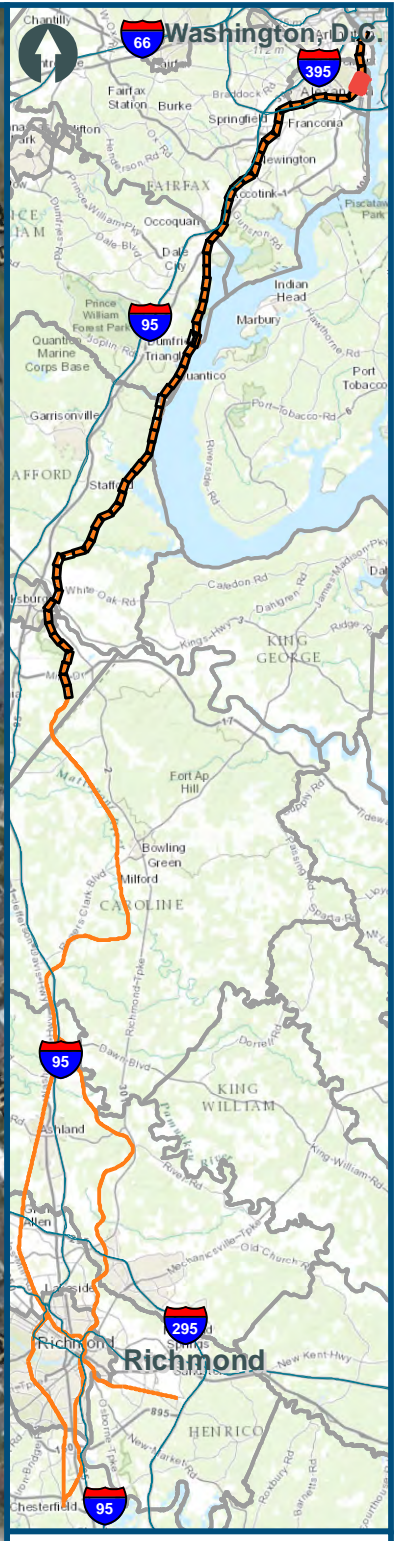


0 150 300
Feet
1 inch = 300 feet
@ 11 x 17 inches
Projection: Lambert Conformal Conic
State Plane Virginia North FIPS 4501 Feet
North American Datum of 1983
Imagery: Bing Map Aerial

- Legend**
- CSXT Mileposts
 - Existing Track
 - New Track
 - Shifted Track
 - CSXT Right-of-Way
 - Streams

Figure J-4
Northern Virginia
East
Alignment Option

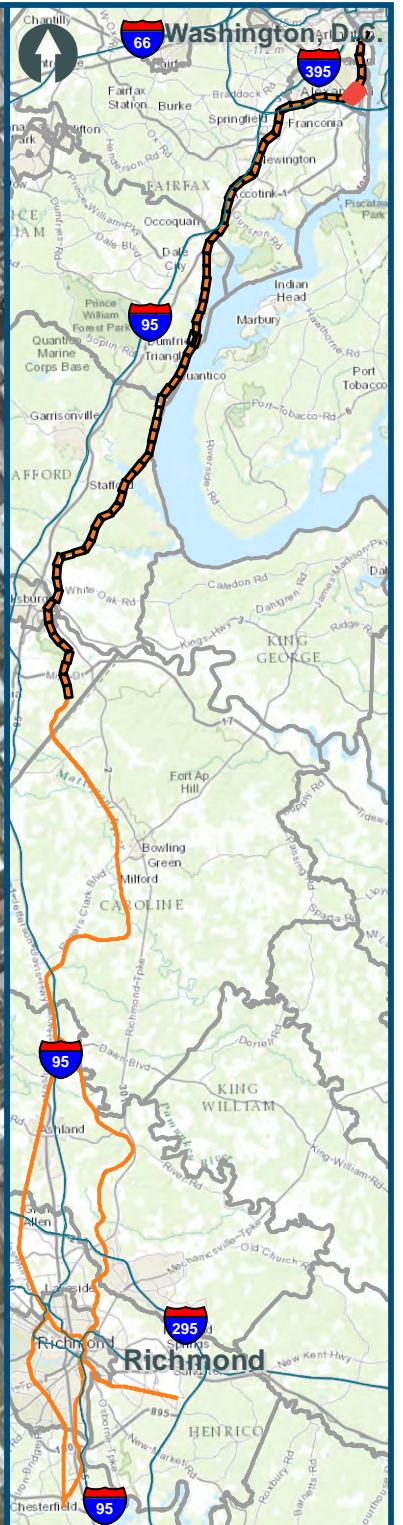
\\dlismain\GIS_DATA\GIS\Projects\11545_VA\DeptofRails-PublicTransportation\0239056_RAPS-4\AllDev-Concept\Eng\map_docs\mxd\Alt_Tech_Report\DC2RVA_Chr6_Appendices_NOV_East_Alignments_11x17.mxd | Last Updated: 11.04.2015



- Legend**
- CSXT Mileposts
 - Existing Track
 - New Track
 - Shifted Track
 - CSXT Right-of-Way
 - Streams

Figure J-5
Northern Virginia
East
Alignment Option

\\dlmain\GIS_DATA\GIS\Projects\11545_VA\DeptofRails-PublicTransportation\0239056_RAPS-4\AIDev-ConceptEngin\map_docs\mxd\Alt_Tech_Report\DC2RVA_Ch6_Appendices_NOV_East_Alignments_11x17.mxd | Last Updated: 11.04.2015

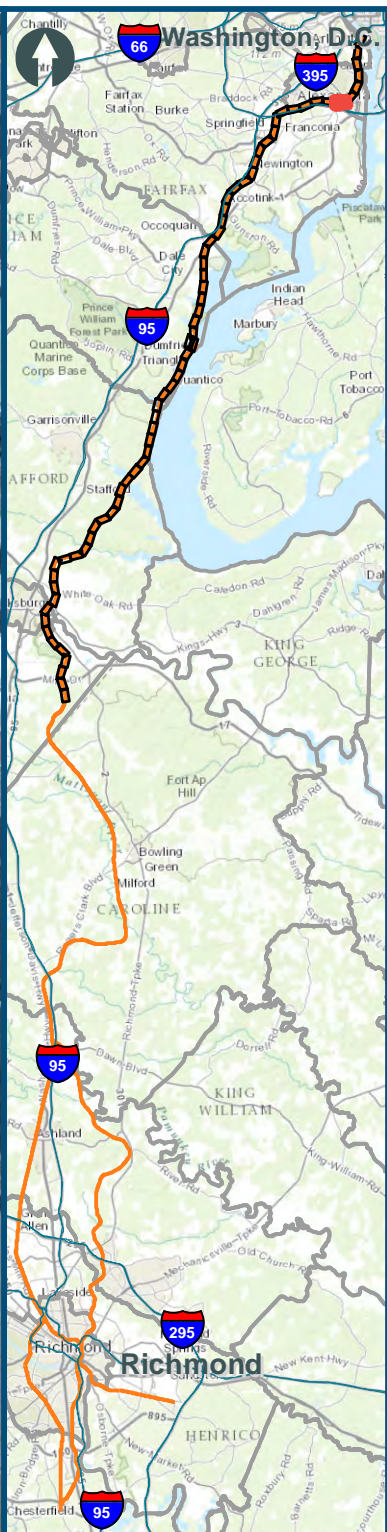


0 150 300
 Feet
 1 inch = 300 feet @ 11 x 17 inches
 Projection: Lambert Conformal Conic State Plane Virginia North FIPS 4501 Feet North American Datum of 1983
 Imagery: Bing Map Aerial

Legend

- WMATA
- Amtrak/VRE Station
- CSXT Mileposts
- Existing Track
- New Track
- Shifted Track
- CSXT Right-of-Way
- Streams

Figure J-6
Northern Virginia East Alignment Option



0 150 300
 Feet
 1 inch = 300 feet
 @ 11 x 17 inches
 Projection: Lambert Conformal Conic
 State Plane Virginia North FIPS 4501 Feet
 North American Datum of 1983
 Imagery: Bing Map Aerial

Legend

- CSXT Mileposts
- Existing Track
- New Track
- Shifted Track
- CSXT Right-of-Way
- Streams

Figure J-7
Northern Virginia
East
Alignment Option



0 150 300
Feet
1 inch = 300 feet
@ 11 x 17 inches
Projection: Lambert Conformal Conic
State Plane Virginia North FIPS 4501 Feet
North American Datum of 1983
Imagery: Bing Map Aerial

Legend

- CSXT Mileposts
- Existing Track
- New Track
- Shifted Track
- CSXT Right-of-Way
- Streams

Figure J-8
Northern Virginia
East
Alignment Option

\\dlismain\GIS_DATA\GIS\Projects\011545_VA\DeptofRails-PublicTransportation\0239056_RAPS-4\AIDev-ConceptEng\map_docs\mxd\Alt_Tech_Report\DC2RVA_Ch6_Appendices_NOV_East_Alignments_11x17.mxd | Last Updated: 11.04.2015



0 150 300
Feet
1 inch = 300 feet
@ 11 x 17 inches
Projection: Lambert Conformal Conic
State Plane Virginia North FIPS 4501 Feet
North American Datum of 1983
Imagery: Bing Map Aerial

- Legend**
- CSXT Mileposts
 - Existing Track
 - New Track
 - Shifted Track
 - CSXT Right-of-Way
 - Streams

Figure J-9
Northern Virginia
East
Alignment Option

\\dlismain\GIS_DATA\GIS\Projects\11545_VA\DeptofRails-PublicTransportation\0239056_RAPS-4\AIDev-ConceptEng\map_docs\mxd\Ait_Tech_Report\DC2RVA_Ch6_Appendices_NOV_East_Alignments_11x17.mxd | Last Updated: 11.04.2015

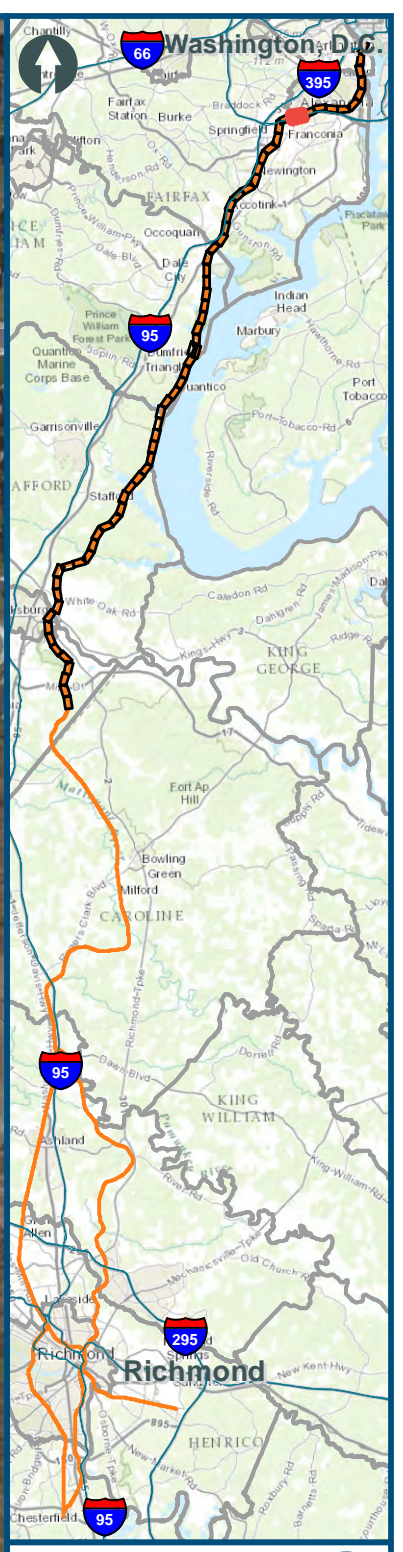
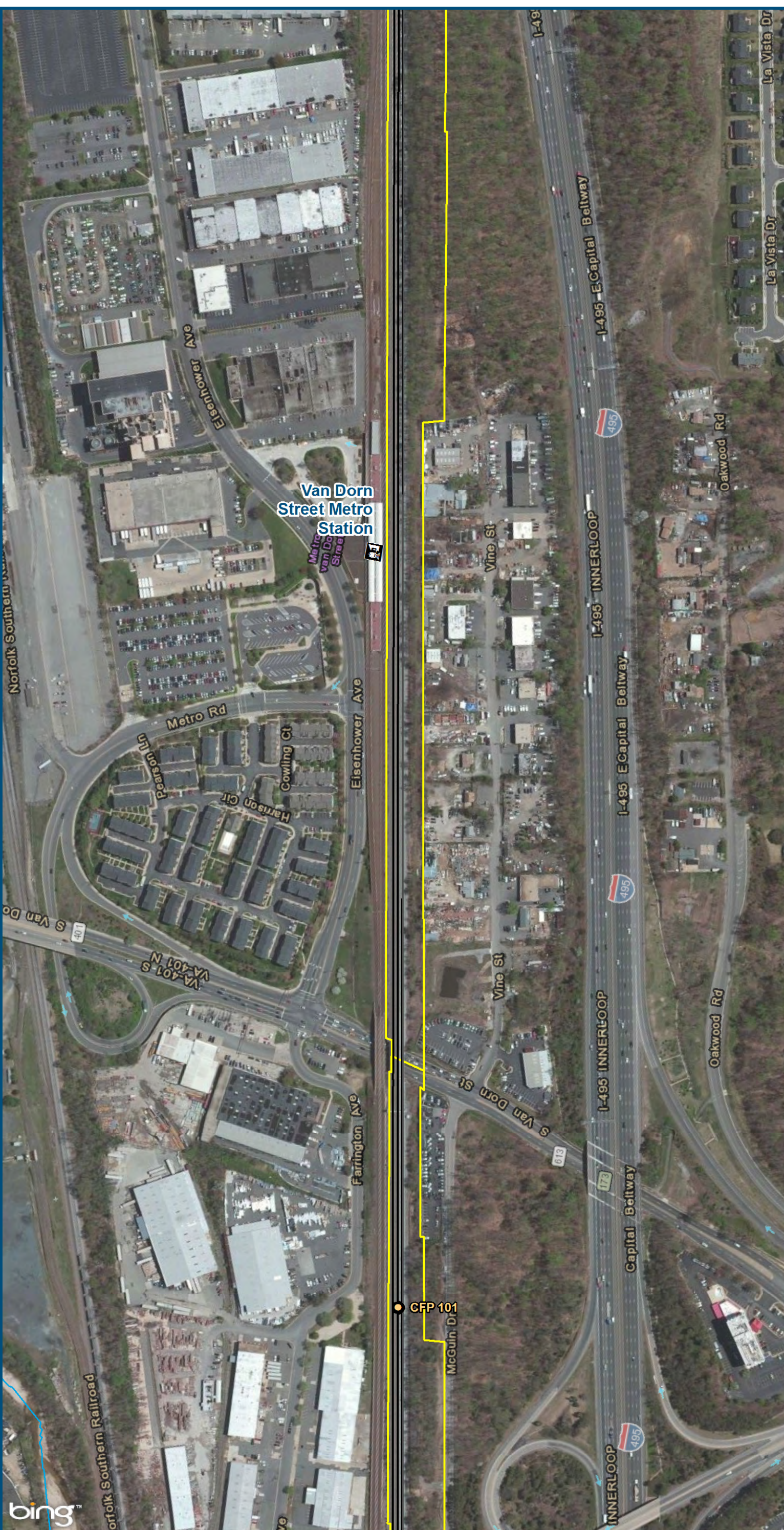


0 150 300
Feet
1 inch = 300 feet
@ 11 x 17 inches
Projection: Lambert Conformal Conic
State Plane Virginia North FIPS 4501 Feet
North American Datum of 1983
Imagery: Bing Map Aerial

- Legend**
- CSXT Mileposts
 - Existing Track
 - New Track
 - Shifted Track
 - CSXT Right-of-Way
 - Streams

Figure J-10
Northern Virginia
East
Alignment Option

\\dlmain\GIS_DATA\GIS\Projects\011545_VA\DeptofRails-PublicTransportation\0239056_RAPS-4AIDev-ConceptEng\map_docs\mxd\Ail_Tech_Report\DC2RVA_Ch6_Appendices_NOV_East_Alignments_11x17.mxd | Last Updated: 11.04.2015

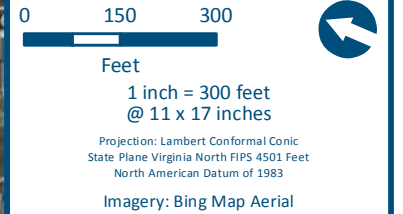
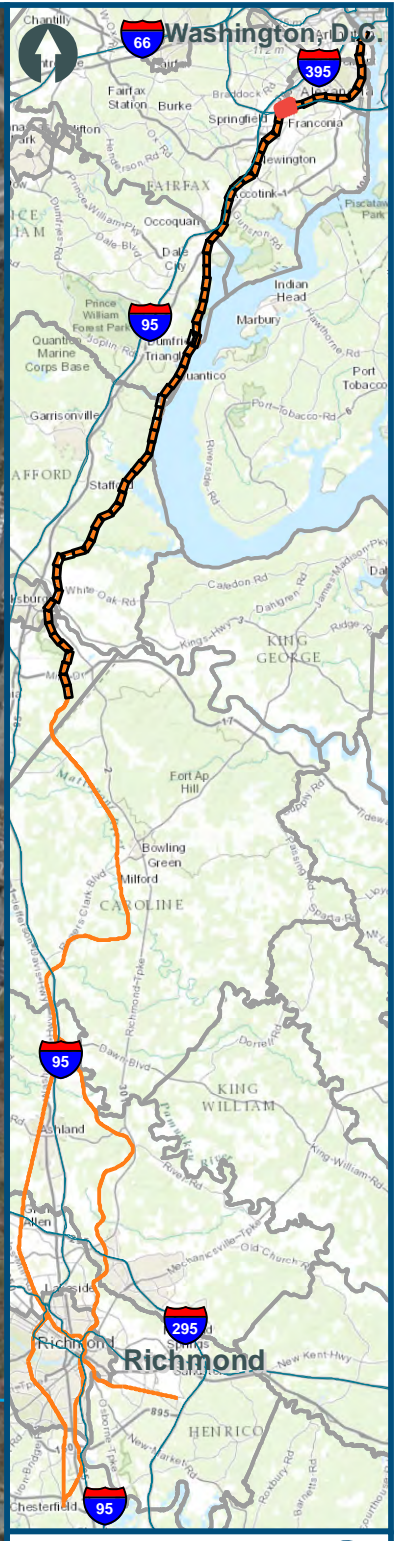


0 150 300
 Feet
 1 inch = 300 feet
 @ 11 x 17 inches
 Projection: Lambert Conformal Conic
 State Plane Virginia North FIPS 4501 Feet
 North American Datum of 1983
 Imagery: Bing Map Aerial

- Legend**
- WMATA
 - CSXT Mileposts
 - Existing Track
 - New Track
 - Shifted Track
 - CSXT Right-of-Way
 - Streams

Figure J-11
 Northern Virginia
 East
 Alignment Option

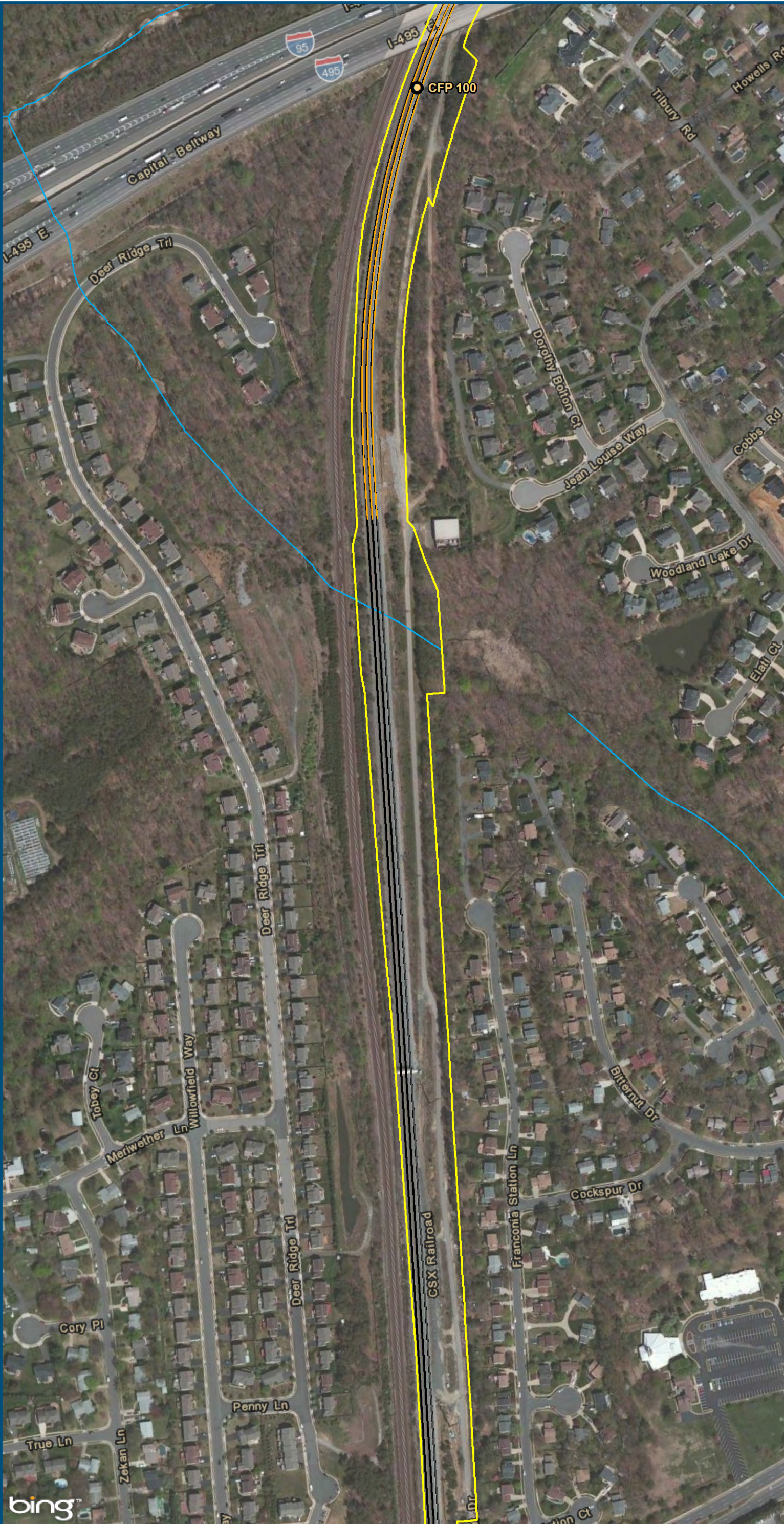
\\dlismain\GIS_DATA\GIS\Projects\011545_VA\DeptofRails-PublicTransportation\0239056_RAPS-4\AllDev-Concept\Eng\map_docs\mxd\Alt_Tech_Report\DC2RVA_Ch6_Appendices_NOV_East_Alignments_11x17.mxd | Last Updated: 11.04.2015



- Legend**
- CSXT Mileposts
 - Existing Track
 - New Track
 - Shifted Track
 - CSXT Right-of-Way
 - Streams

Figure J-12
Northern Virginia
East
Alignment Option

\\dlismain\GIS_DATA\GIS\Projects\011545_VA Dept of Rails-PublicTransportation\0239056_RAPS-4AIDev-ConceptEngin\map_docs\mxd\Alt_Tech_Report\DC2RVA_Ch6_Appendices_NOV_East_Alignments_11x17.mxd | Last Updated: 11.04.2015

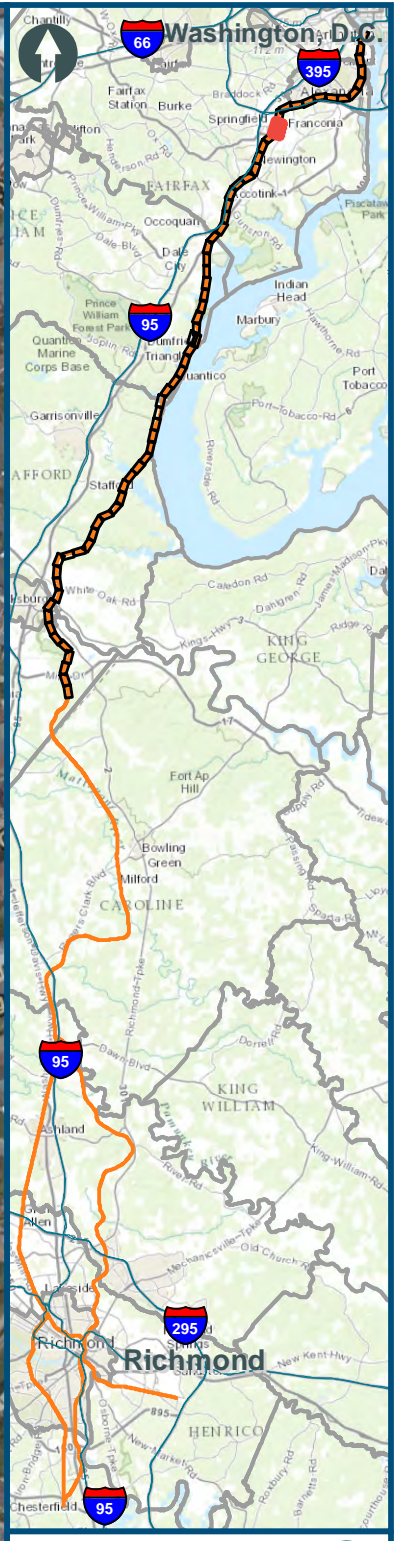


0 150 300
Feet
1 inch = 300 feet
@ 11 x 17 inches
Projection: Lambert Conformal Conic
State Plane Virginia North FIPS 4501 Feet
North American Datum of 1983
Imagery: Bing Map Aerial

- Legend**
- CSXT Mileposts
 - Existing Track
 - New Track
 - Shifted Track
 - CSXT Right-of-Way
 - Streams

Figure J-13
Northern Virginia
East
Alignment Option

\\dlismain\GIS_DATA\GIS\Projects\011545_VA\DeptofRails-PublicTransportation\0239056_RAPS-4\AIDev-Concept\Eng\map_docs\mxd\Alt_Tech_Report\DC2RVA_Ch6_Appendices_NOV_East_Alignments_11x17.mxd | Last Updated: 11.04.2015

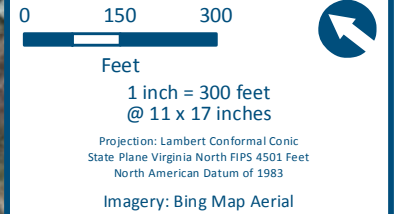


0 150 300
Feet
1 inch = 300 feet
@ 11 x 17 inches
Projection: Lambert Conformal Conic
State Plane Virginia North FIPS 4501 Feet
North American Datum of 1983
Imagery: Bing Map Aerial

- Legend**
- CSXT Mileposts
 - Existing Track
 - New Track
 - Shifted Track
 - CSXT Right-of-Way
 - Streams

Figure J-14
Northern Virginia
East
Alignment Option

\\dlismain\GIS_DATA\GIS\Projects\011545_VA\DeptofRails-PublicTransportation\0239056_RAPS-4\AIDev-ConceptEng\map_docs\mxd\Alt_Tech_Report\DC2RVA_Chr6_Appendices_NOV_East_Alignments_11x17.mxd | Last Updated: 11.04.2015










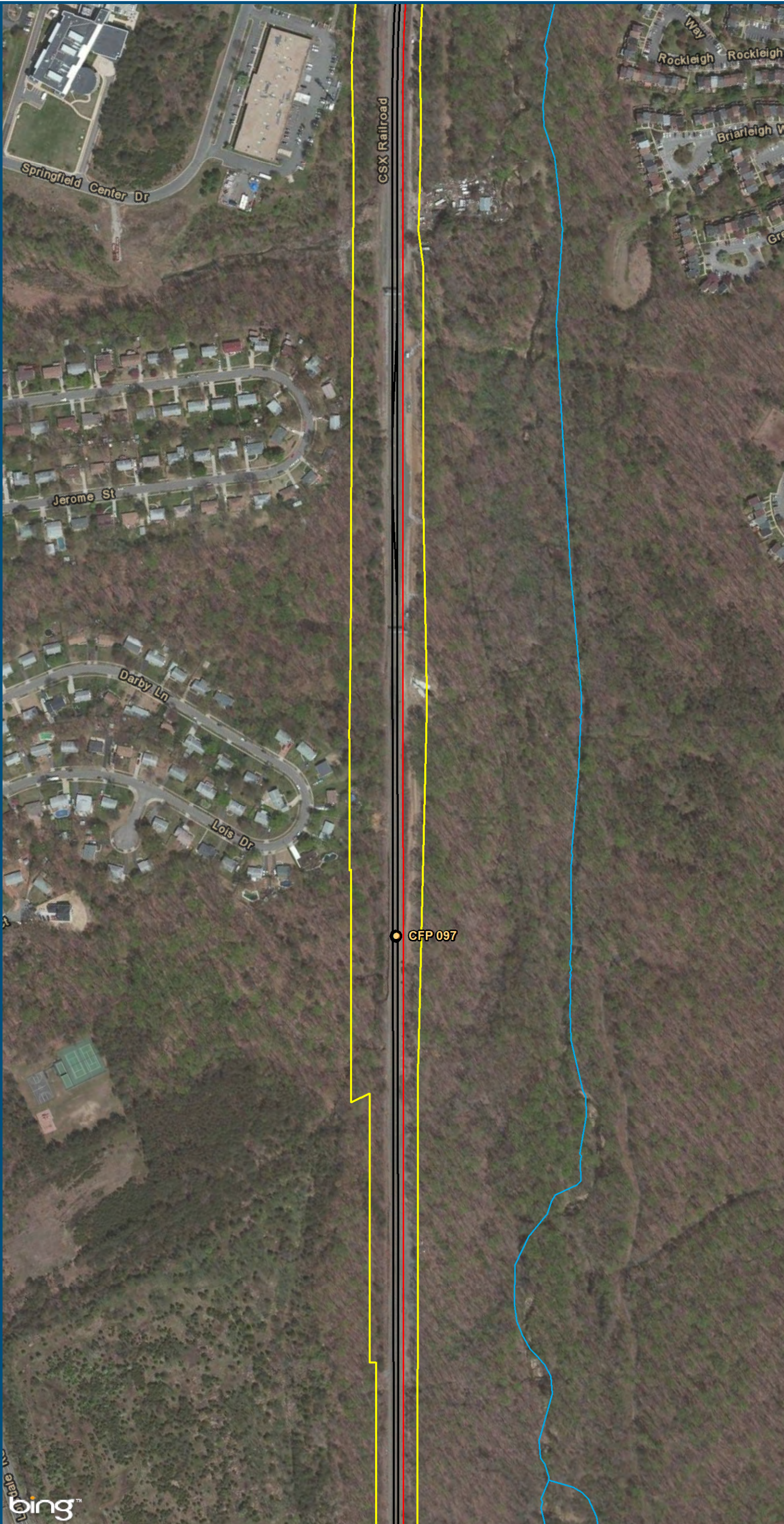
- Legend**
-  VRE/Wmata Station
 -  CSXT Mileposts
 -  Existing Track
 -  New Track
 -  Shifted Track
 -  CSXT Right-of-Way
 -  Streams

Figure J-15
Northern Virginia
East
Alignment Option

\\dlismain\GIS_DATA\GIS\Projects\011545_VA\DeptofRails-PublicTransportation\0239056_RAPS-4\AIDev-ConceptEng\map_docs\mxd\Alt_Tech_Report\DC2RVA_Chr6_Appendices_NOV_East_Alignments_11x17.mxd | Last Updated: 11.04.2015

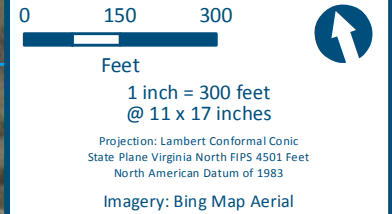
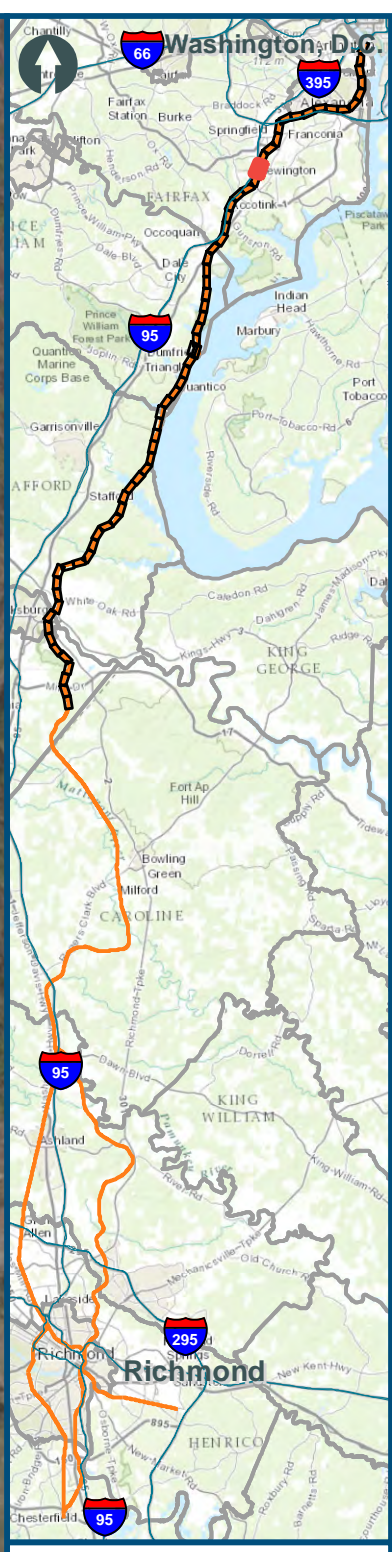


0 150 300
Feet
1 inch = 300 feet
@ 11 x 17 inches
Projection: Lambert Conformal Conic
State Plane Virginia North FIPS 4501 Feet
North American Datum of 1983
Imagery: Bing Map Aerial

- Legend**
- CSXT Mileposts
 - Existing Track
 - New Track
 - Shifted Track
 - CSXT Right-of-Way
 - Streams

Figure J-16
Northern Virginia
East
Alignment Option

\\dlmain\GIS_DATA\GIS\Projects\011545_VA\DeptofRails-PublicTransportation\0239056_RAPS-4\AIDev-ConceptEng\map_docs\mxd\Alt_Tech_Report\DC2RVA_Chr6_Appendices_NOV_East_Alignments_11x17.mxd | Last Updated: 11.04.2015



- Legend**
- CSXT Mileposts
 - Existing Track
 - New Track
 - Shifted Track
 - CSXT Right-of-Way
 - Streams

Figure J-17
Northern Virginia
East
Alignment Option

\\dlismain\GIS_DATA\GIS\Projects\11545_VA\DeptofRails-Public\Transportation\0239056_RAPS-4\AIDev-Concept\Eng\map_docs\mxd\Alt_Tech_Report\DC2RVA_Ch6_Appendices_NOV_East_Alignments_11x17.mxd | Last Updated: 11.04.2015

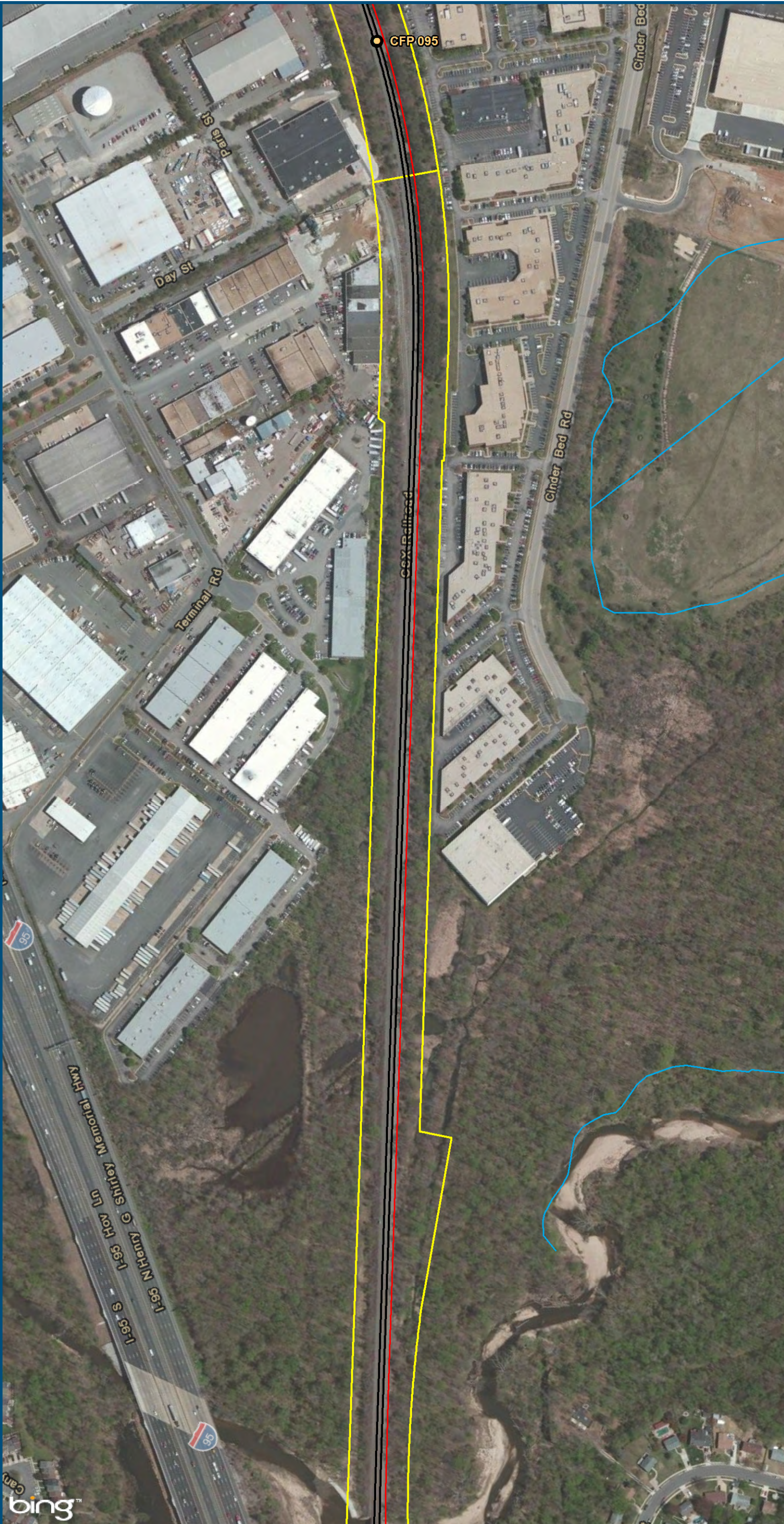


0 150 300
Feet
1 inch = 300 feet
@ 11 x 17 inches
Projection: Lambert Conformal Conic
State Plane Virginia North FIPS 4501 Feet
North American Datum of 1983
Imagery: Bing Map Aerial

- Legend**
- CSXT Mileposts
 - Existing Track
 - New Track
 - Shifted Track
 - CSXT Right-of-Way
 - Streams

Figure J-18
Northern Virginia
East
Alignment Option

\\dlismain\GIS_DATA\GIS\Projects\011545_VA\DeptofRails-PublicTransportation\0239056_RAPS-4\AIDev-ConceptEng\map_docs\mxd\Alt_Tech_Report\DC2RVA_Chr6_Appendices_NOV_East_Alignments_11x17.mxd | Last Updated: 11.04.2015

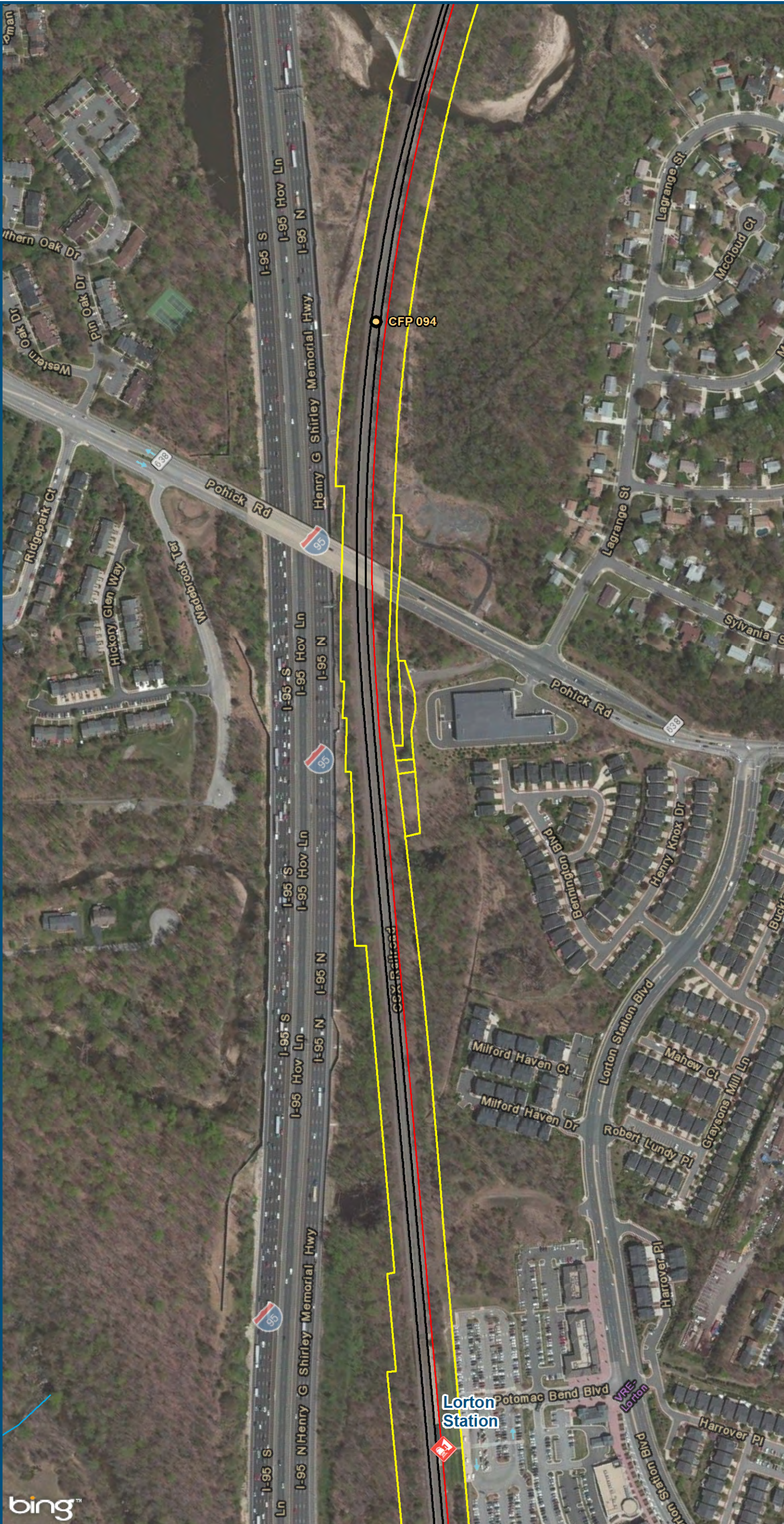


0 150 300
Feet
1 inch = 300 feet
@ 11 x 17 inches
Projection: Lambert Conformal Conic
State Plane Virginia North FIPS 4501 Feet
North American Datum of 1983
Imagery: Bing Map Aerial

- Legend**
- CSXT Mileposts
 - Existing Track
 - New Track
 - Shifted Track
 - ▭ CSXT Right-of-Way
 - Streams

Figure J-19
Northern Virginia
East
Alignment Option

\\dlismain\GIS_DATA\GIS\Projects\011545_VA\DeptofRails-PublicTransportation\0239056_RAPS-4\AIDev-ConceptEng\map_docs\mxd\Alt_Tech_Report\DC2RVA_Cht6_Appendices_NOV_East_Alignments_11x17.mxd | Last Updated: 11.04.2015

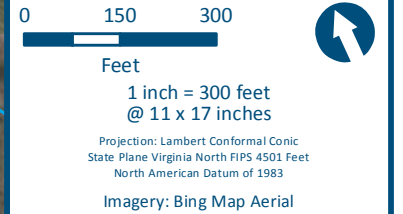
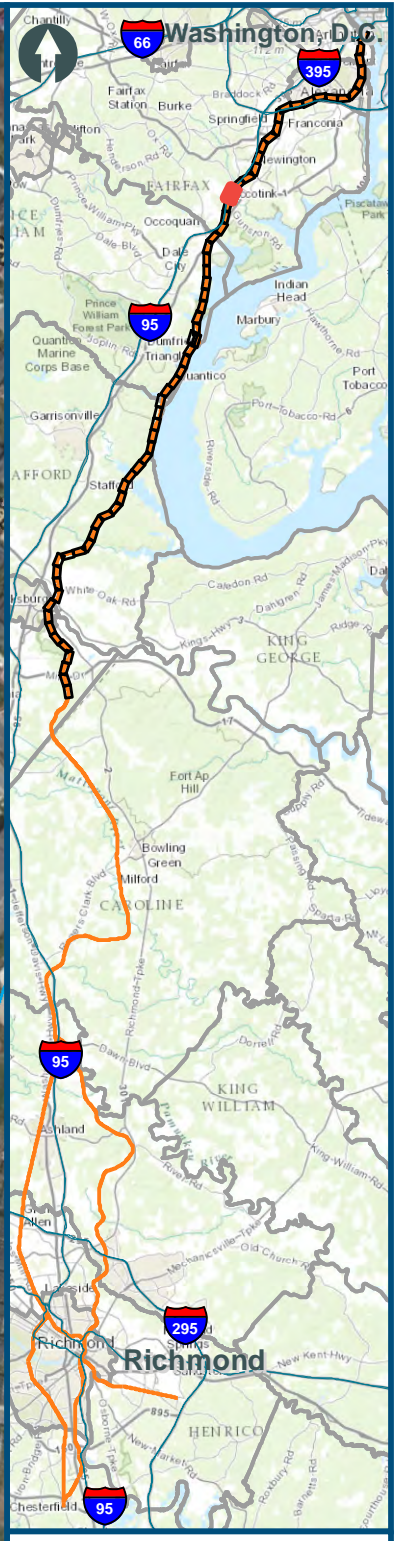


0 150 300
Feet
1 inch = 300 feet
@ 11 x 17 inches
Projection: Lambert Conformal Conic
State Plane Virginia North FIPS 4501 Feet
North American Datum of 1983
Imagery: Bing Map Aerial

- Legend**
- VRE Station
 - CSXT Mileposts
 - Existing Track
 - New Track
 - Shifted Track
 - CSXT Right-of-Way
 - Streams

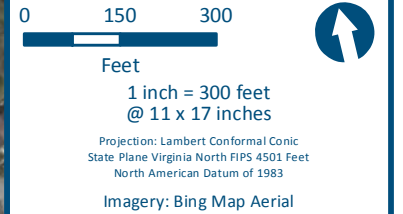
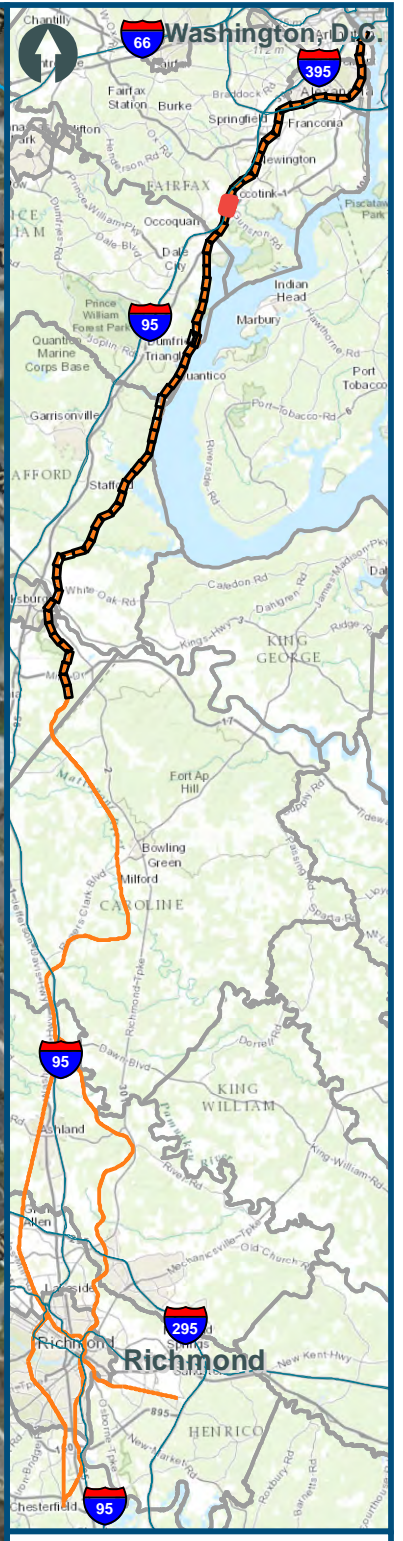
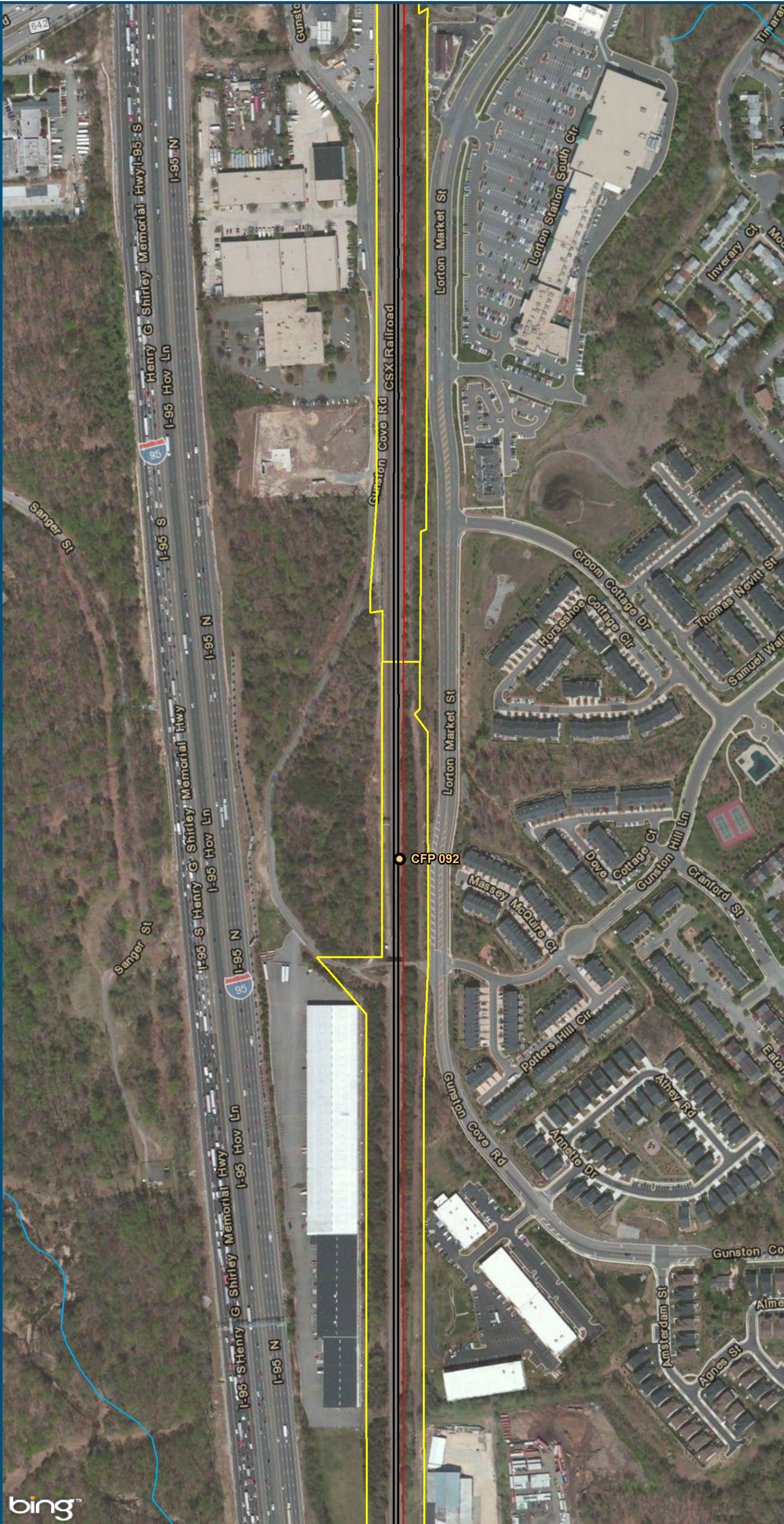
Figure J-20
Northern Virginia
East
Alignment Option

\\dlismain\GIS_DATA\GIS\Projects\011545_VA\DeptofRails-PublicTransportation\0239056_RAPS-4\AllDev-Concept\Eng\map_docs\mxd\Alt_Tech_Report\DC2RVA_Ch6_Appendices_NOV_East_Alignments_11x17.mxd | Last Updated: 11.04.2015



- Legend**
- Amtrak Station
 - VRE Station
 - CSXT Mileposts
 - Existing Track
 - New Track
 - Shifted Track
 - CSXT Right-of-Way
 - Streams

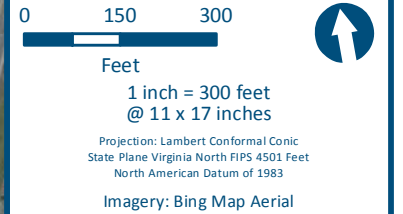
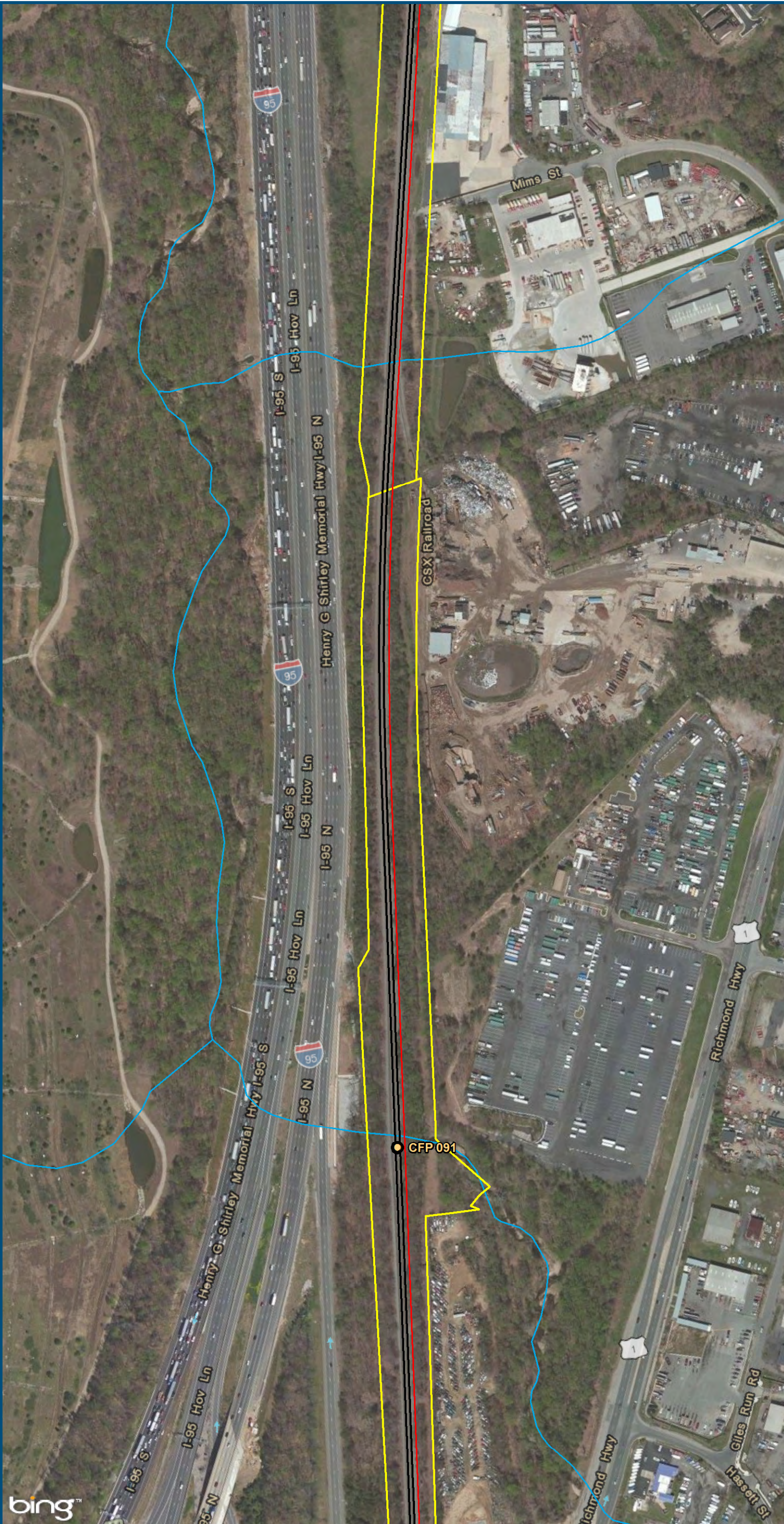
Figure J-21
Northern Virginia
East
Alignment Option



- Legend**
- CSXT Mileposts
 - Existing Track
 - New Track
 - Shifted Track
 - CSXT Right-of-Way
 - Streams

Figure J-22
Northern Virginia
East
Alignment Option

\\dlismain\GIS_DATA\GIS\Projects\011545_VA Dept of Rails-PublicTransportation\0239056_RAPS-4\AIDev-Concept\Eng\map_docs\mxd\Ail_Tech_Report\DC2RVA_Chr6_Appendices_NOV_East_Alignments_11x17.mxd | Last Updated: 11.04.2015



- Legend**
- CSXT Mileposts
 - Existing Track
 - New Track
 - Shifted Track
 - CSXT Right-of-Way
 - Streams

Figure J-23
Northern Virginia
East
Alignment Option

\\dlismain\GIS_DATA\GIS\Projects\11545_VA\DeptofRails-PublicTransportation\02390566_RAPS-4\AllDev-Concept\Eng\map_docs\mxd\Alt_Tech_Report\DC2RVA_Chr6_Appendices_NOV_East_Alignments_11x17.mxd | Last Updated: 11.04.2015

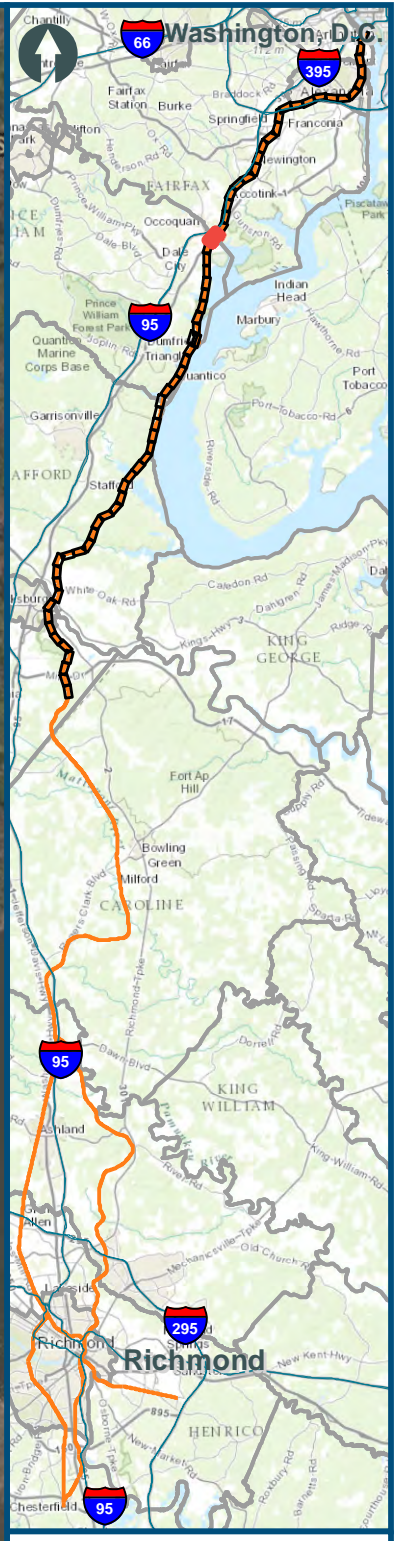


0 150 300
Feet
1 inch = 300 feet
@ 11 x 17 inches
Projection: Lambert Conformal Conic
State Plane Virginia North FIPS 4501 Feet
North American Datum of 1983
Imagery: Bing Map Aerial

- Legend**
- CSXT Mileposts
 - Existing Track
 - New Track
 - Shifted Track
 - CSXT Right-of-Way
 - Streams

Figure J-24
Northern Virginia
East
Alignment Option

\\dlismain\GIS_DATA\GIS\Projects\11545_VA\DeptofRails-PublicTransportation\0239056_RAPS-4\AIDev-ConceptEng\map_docs\mxd\Alt_Tech_Report\DC2RVA_Ch6_Appendices_NOV_East_Alignments_11x17.mxd | Last Updated: 11.04.2015

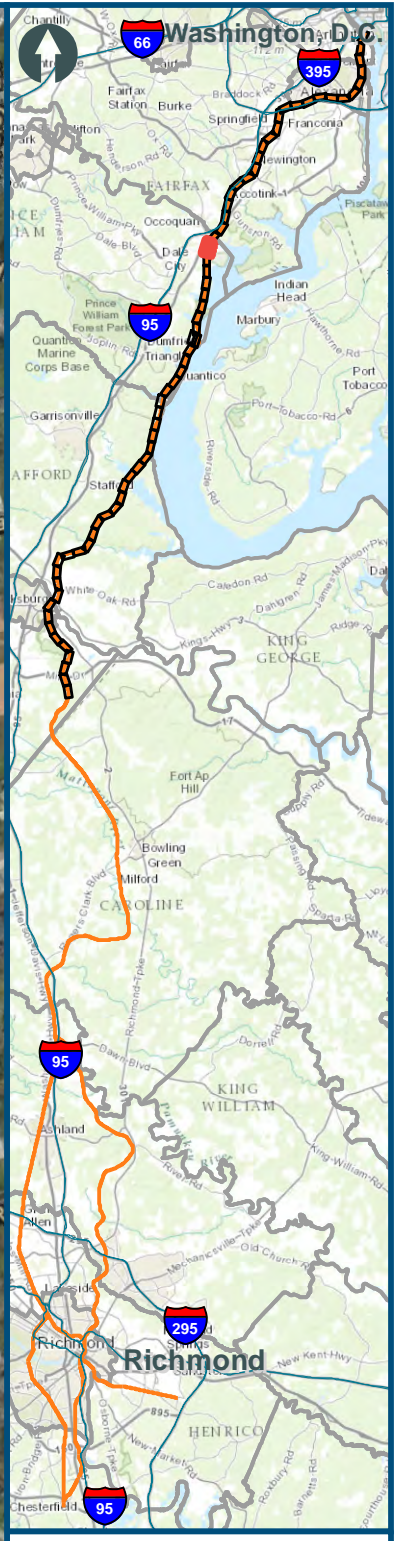


0 150 300
Feet
1 inch = 300 feet
@ 11 x 17 inches
Projection: Lambert Conformal Conic
State Plane Virginia North FIPS 4501 Feet
North American Datum of 1983
Imagery: Bing Map Aerial

- Legend**
- CSXT Mileposts
 - Existing Track
 - New Track
 - Shifted Track
 - CSXT Right-of-Way
 - Streams

Figure J-25
Northern Virginia
East
Alignment Option

\\dlismain\GIS_DATA\GIS\Projects\011545_VA\DeptofRails-PublicTransportation\0239056_RAPS-4\AIDev-ConceptEng\map_docs\mxd\Alt_Tech_Report\DC2RVA_Chr6_Appendices_NOV_East_Alignments_11x17.mxd | Last Updated: 11.04.2015

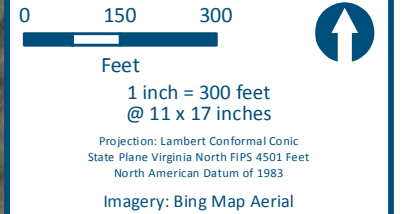
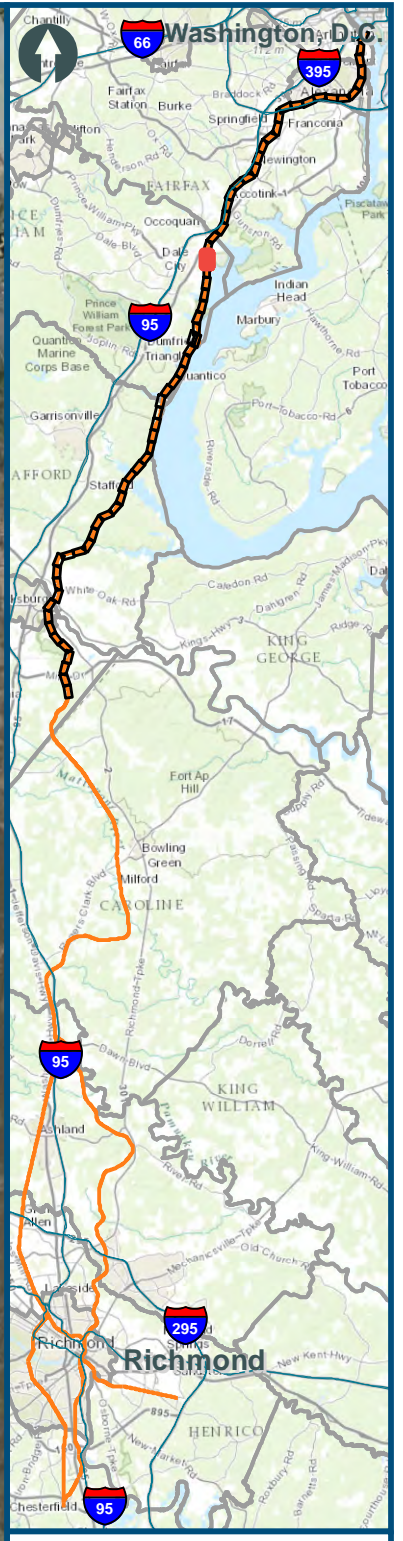
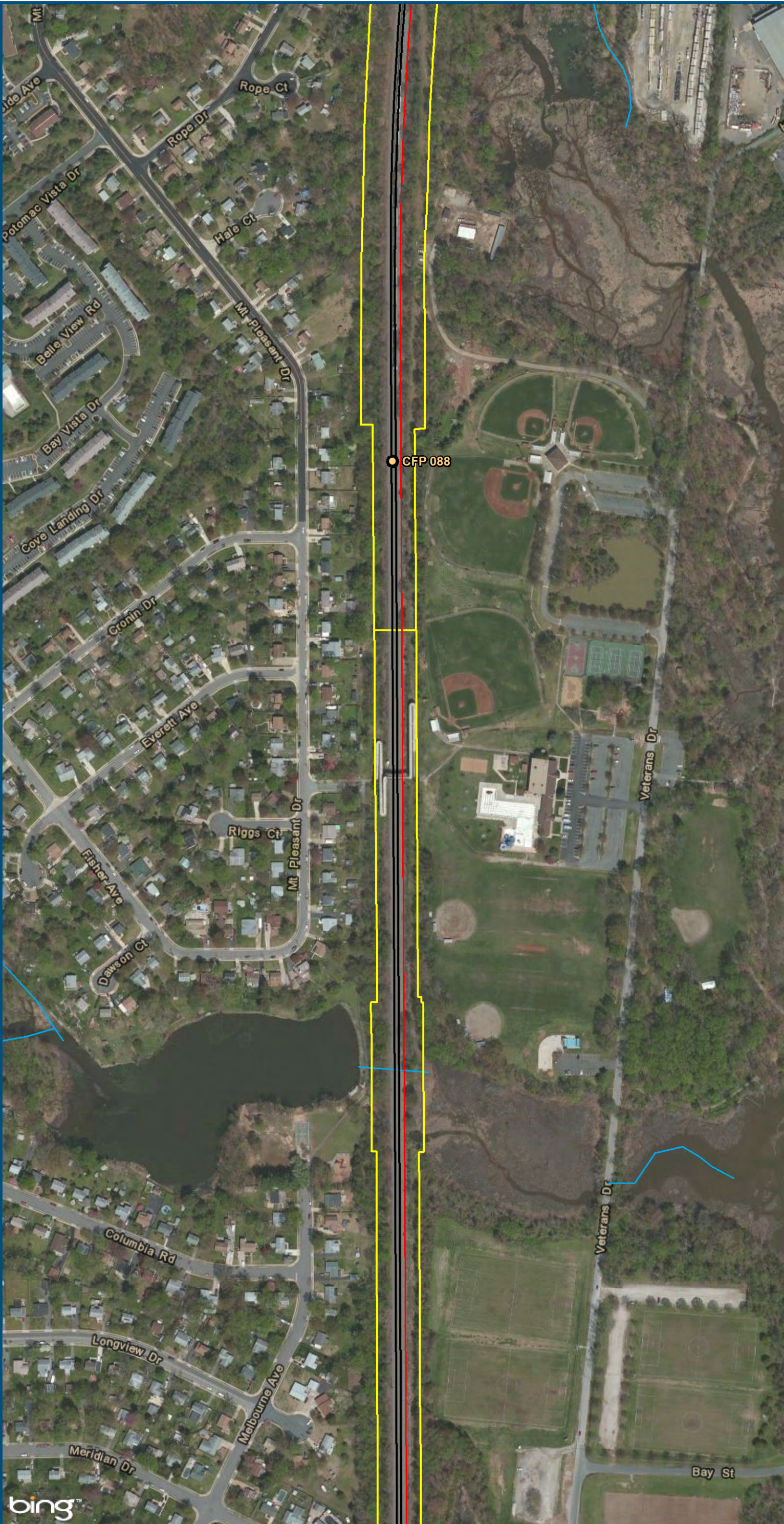


0 150 300
Feet
1 inch = 300 feet
@ 11 x 17 inches
Projection: Lambert Conformal Conic
State Plane Virginia North FIPS 4501 Feet
North American Datum of 1983
Imagery: Bing Map Aerial

- Legend**
- Amtrak/VRE Station
 - CSXT Mileposts
 - Existing Track
 - New Track
 - Shifted Track
 - CSXT Right-of-Way
 - Streams

Figure J-26
Northern Virginia
East
Alignment Option

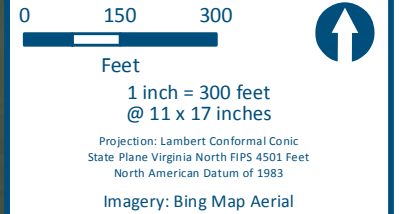
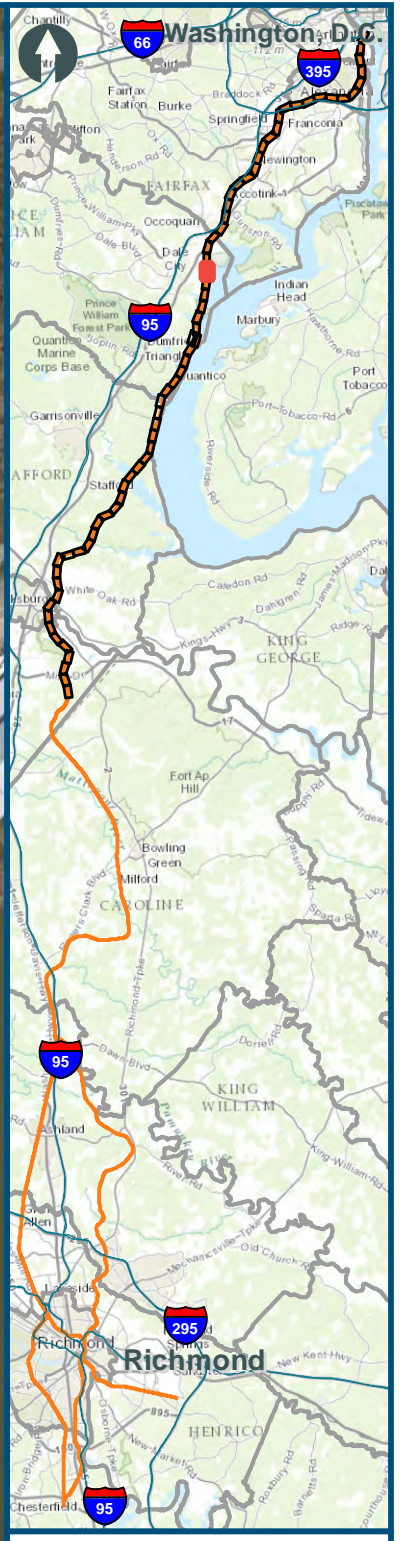
\\dlismain\GIS_DATA\GIS\Projects\11545_VA\DeptofRails-PublicTransportation\0239056_RAPS-4\AIDev-Concept\Eng\map_docs\mxd\Alt_Tech_Report\DC2RVA_Ch6_Appendices_NOV_East_Alignments_11x17.mxd | Last Updated: 11.04.2015



- Legend**
- CSXT Mileposts
 - Existing Track
 - New Track
 - Shifted Track
 - CSXT Right-of-Way
 - Streams

Figure J-27
Northern Virginia
East
Alignment Option

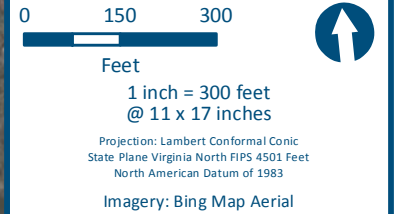
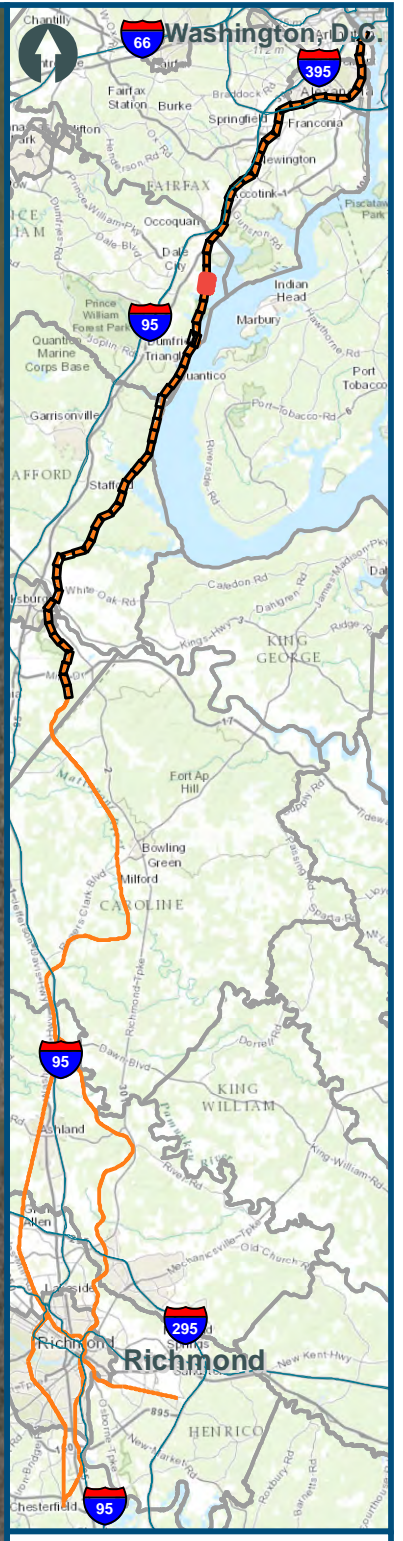
\\dlismain\GIS_DATA\GIS\Projects\011545_VA\DeptofRails-PublicTransportation\0239056_RAPS-4\AIDev-Concept\Eng\map_docs\mxd\Alt_Tech_Report\DC2RVA_Ch6_Appendices_NOV_East_Alignments_11x17.mxd | Last Updated: 11.04.2015



- Legend**
- CSXT Mileposts
 - Existing Track
 - New Track
 - Shifted Track
 - CSXT Right-of-Way
 - Streams

Figure J-28
Northern Virginia
East
Alignment Option

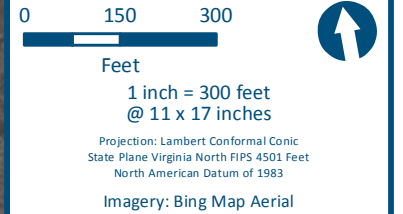
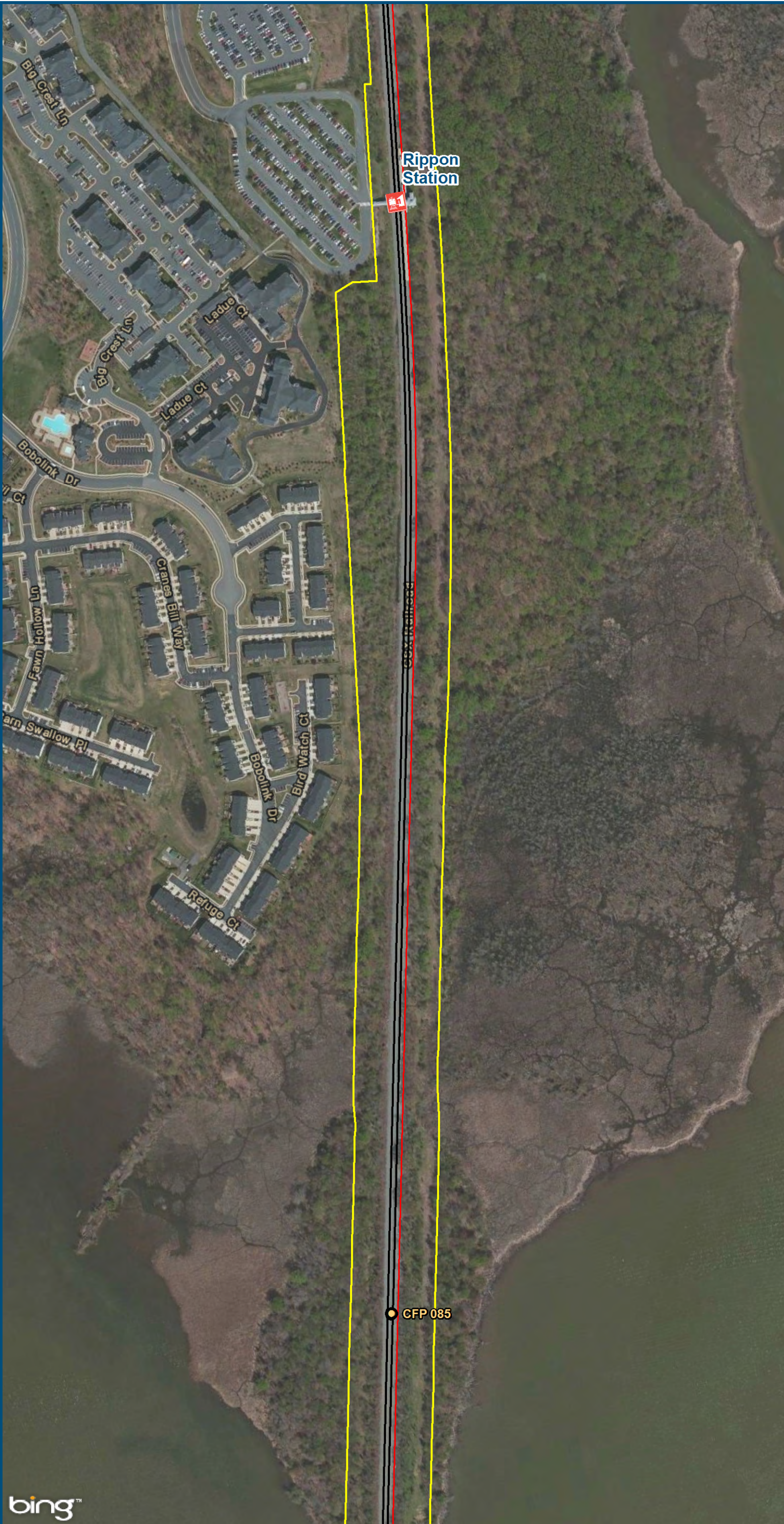
\\dlismain\GIS_DATA\GIS\Projects\11545_VA\DeptofRails-PublicTransportation\0239056_RAPS-4\AIDev-ConceptEng\map_docs\mxd\Alt_Tech_Report\DC2RVA_Ch6_Appendices_NOV_East_Alignments_11x17.mxd | Last Updated: 11.04.2015



- Legend**
- CSXT Mileposts
 - Existing Track
 - New Track
 - Shifted Track
 - CSXT Right-of-Way
 - Streams

Figure J-29
Northern Virginia
East
Alignment Option

\\dlismain\GIS_DATA\GIS\Projects\011545_VA\DeptofRails-PublicTransportation\0239056_RAPS-4\AIDev-ConceptEng\map_docs\mxd\Alt_Tech_Report\DC2RVA_Chr6_Appendices_NOV_East_Alignments_11x17.mxd | Last Updated: 11.04.2015










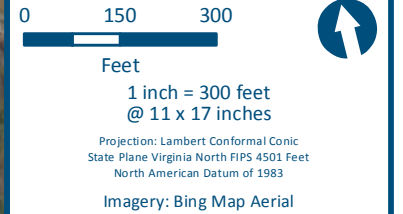
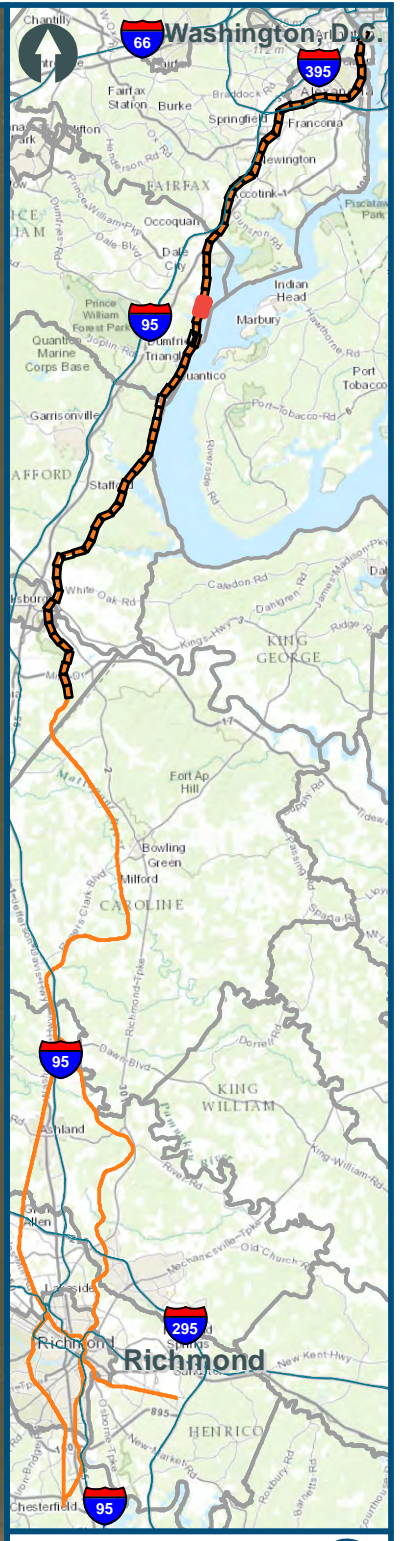
- Legend**
-  VRE Station
 -  CSXT Mileposts
 -  Existing Track
 -  New Track
 -  Shifted Track
 -  CSXT Right-of-Way
 -  Streams

Figure J-30
Northern Virginia
East
Alignment Option

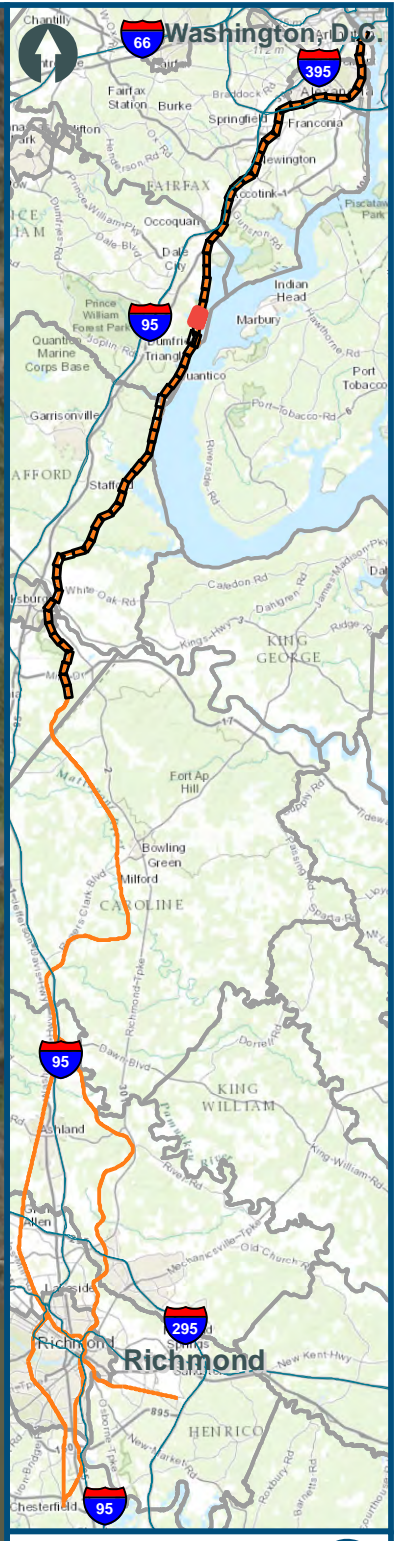
\\dlismain\GIS_DATA\GIS\Projects\011545_VA\DeptofRails-PublicTransportation\0239056_RAPS-4\AIDev-ConceptEng\map_docs\mxd\Alt_Tech_Report\DC2RVA_Ch6_Appendices_NOV_East_Alignments_11x17.mxd | Last Updated: 11.04.2015



- Legend**
- CSXT Mileposts
 - Existing Track
 - New Track
 - Shifted Track
 - CSXT Right-of-Way
 - Streams

**Figure J-31
Northern Virginia
East
Alignment Option**

\\dlismain\GIS_DATA\GIS\Projects\11545_VA\DeptofRails-PublicTransportation\0239056_RAPS-4\AIDev-ConceptEng\map_docs\mxd\Alt_Tech_Report\DC2RVA_Chr6_Appendices_NOV_East_Alignments_11x17.mxd | Last Updated: 11.04.2015



0 150 300
Feet
1 inch = 300 feet
@ 11 x 17 inches
Projection: Lambert Conformal Conic
State Plane Virginia North FIPS 4501 Feet
North American Datum of 1983
Imagery: Bing Map Aerial

- Legend**
- CSXT Mileposts
 - Existing Track
 - New Track
 - Shifted Track
 - CSXT Right-of-Way
 - Streams

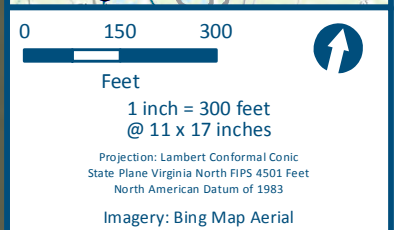
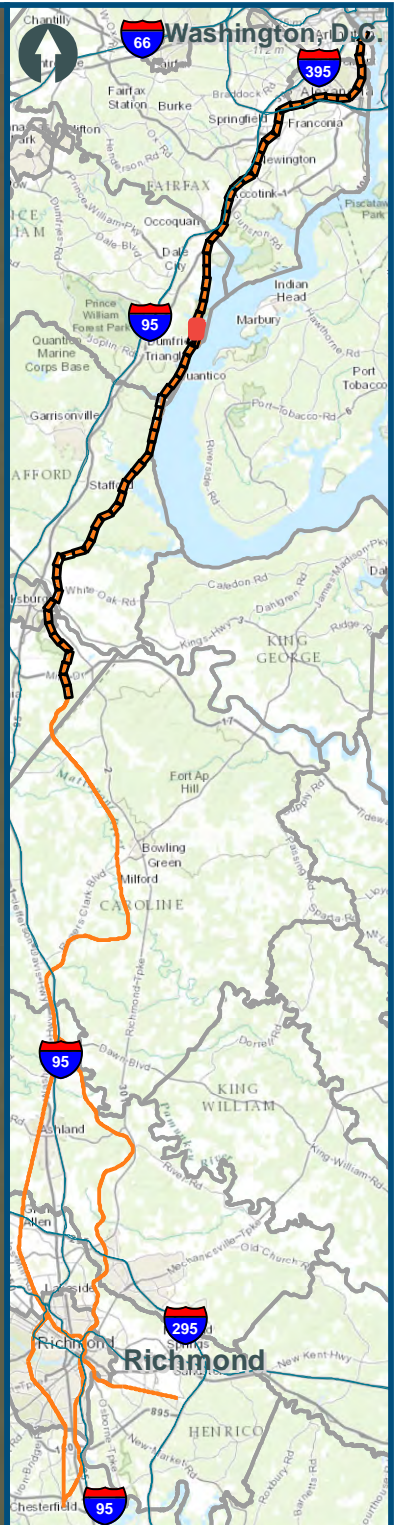
Figure J-32
Northern Virginia
East
Alignment Option

\\dlismain\GIS_DATA\GIS\Projects\011545_VA\DeptofRails-PublicTransportation\0239056_RAPS-4\AIIDev-ConceptEng\map_docs\mxd\Alt_Tech_Report\DC2RVA_Chr6_Appendices_NOV_East_Alignments_11x17.mxd | Last Updated: 11.11.2015



Planned VRE
- Potomac
Shores Station

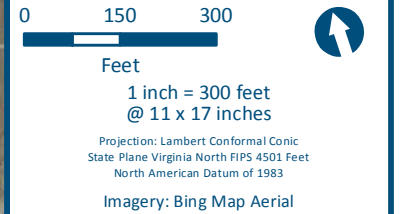
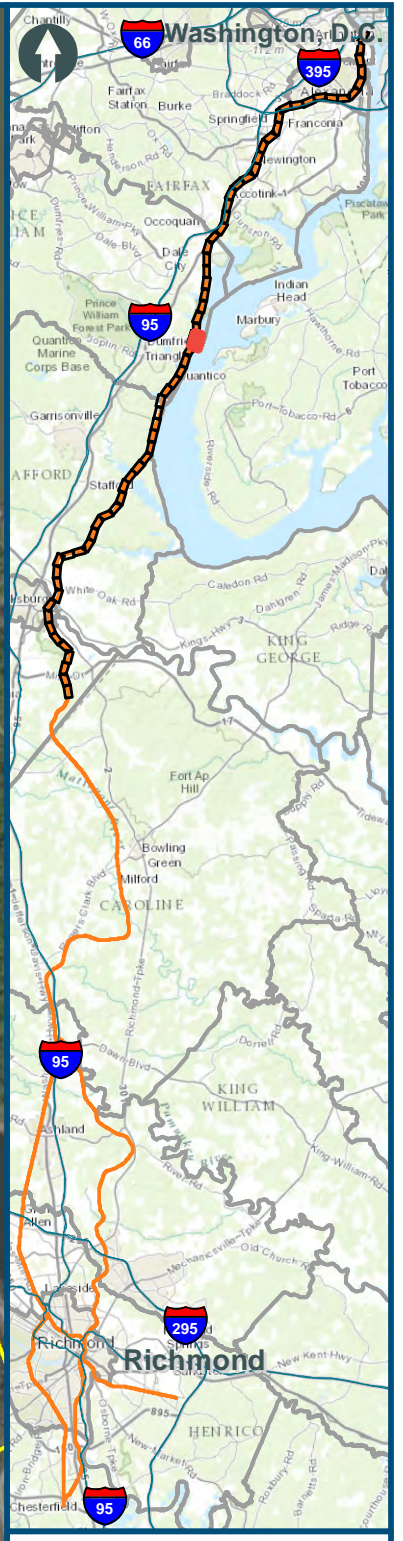
CFP 083



- Legend**
- VRE Station
 - CSXT Mileposts
 - Third Track Under Construction by CSXT
 - Existing Track
 - New Track
 - Shifted Track
 - CSXT Right-of-Way
 - Streams

Figure J-33
Northern Virginia
East
Alignment Option

\\dlismain\GIS_DATA\GIS\Projects\011545_VA\DeptofRails-PublicTransportation\0239056_RAPS-4\AIDev-ConceptEng\map_docs\mxd\Alt_Tech_Report\DC2RVA_Chr6_Appendices_NOV_East_Alignments_11x17.mxd | Last Updated: 11.11.2015



- Legend**
- CSXT Mileposts
 - Third Track Under Construction by CSXT
 - Existing Track
 - New Track
 - Shifted Track
 - CSXT Right-of-Way
 - Streams

Figure J-34
Northern Virginia
East
Alignment Option