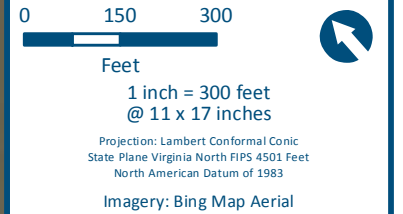


\\dlismain\GIS_DATA\GIS\Projects\011545_VA\DeptofRails-PublicTransportation\0239056_RAPS-4\AIDev-ConceptEng\map_docs\mxd\Alt_Tech_Report\DC2RVA_Chr6_Appendices_NOV_West_Alignments_11x17.mxd | Last Updated: 11.11.2015










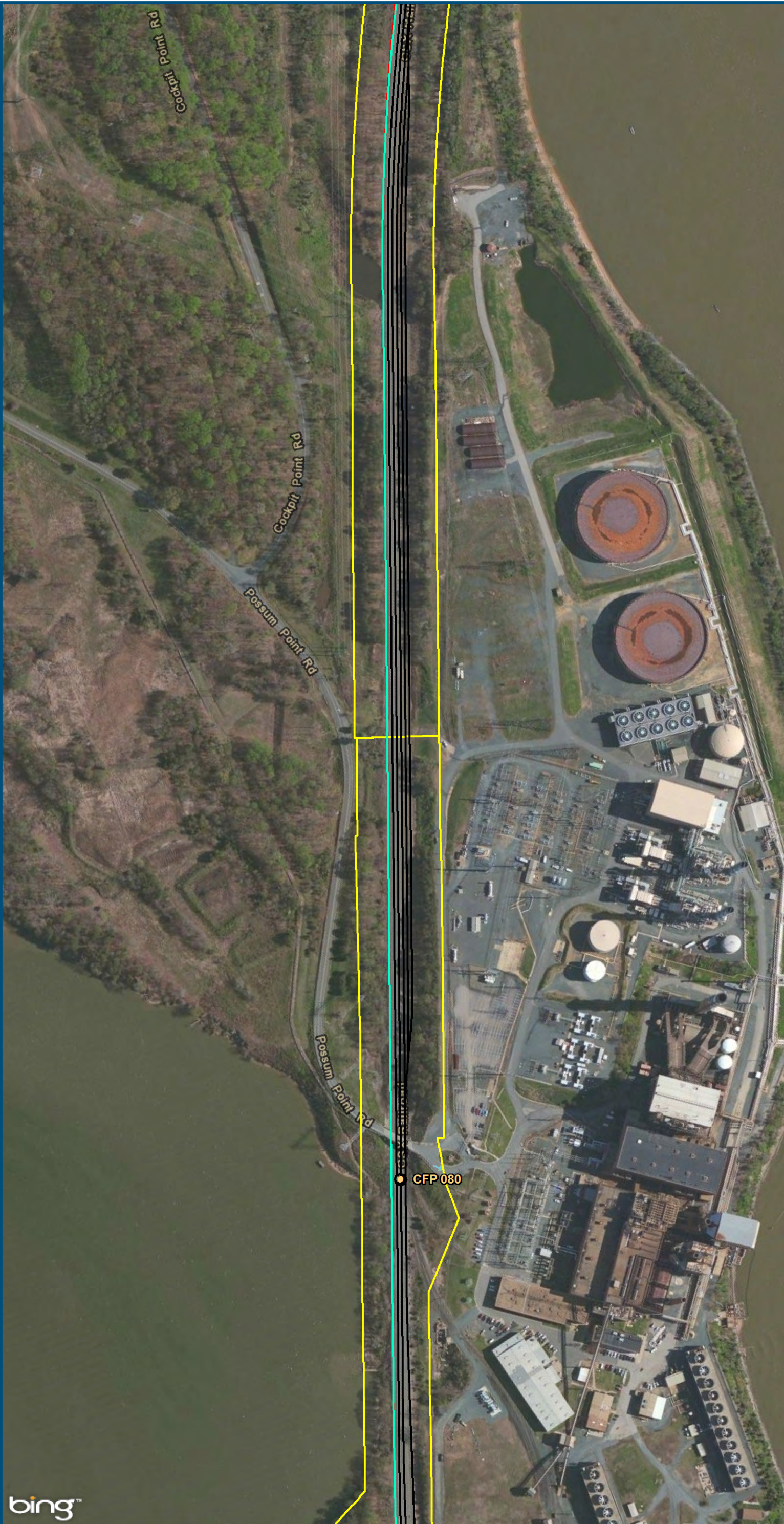
- Legend**
-  CSXT Mileposts
 -  Third Track Under Construction by CSXT
 -  Existing Track
 -  New Track
 -  Shifted Track
 -  CSXT Right-of-Way
 -  Streams

Figure K-35
Northern Virginia
West
Alignment Option

\\dlismain\GIS_DATA\GIS\Projects\011545_VA\DeptofRails-PublicTransportation\0239056_RAPS-4\AIDev-ConceptEng\map_docs\mxd\Alt_Tech_Report\DC2RVA_Chr6_Appendices_NOV_West_Alignments_11x17.mxd | Last Updated: 11.11.2015

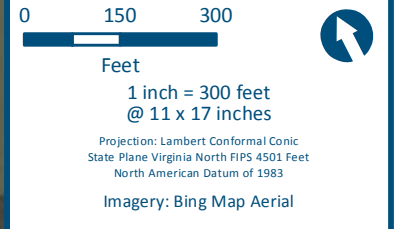


0 150 300
Feet
1 inch = 300 feet
@ 11 x 17 inches
Projection: Lambert Conformal Conic
State Plane Virginia North FIPS 4501 Feet
North American Datum of 1983
Imagery: Bing Map Aerial

- Legend**
- CSXT Mileposts
 - Third Track Under Construction by CSXT
 - Existing Track
 - New Track
 - Shifted Track
 - CSXT Right-of-Way
 - Streams

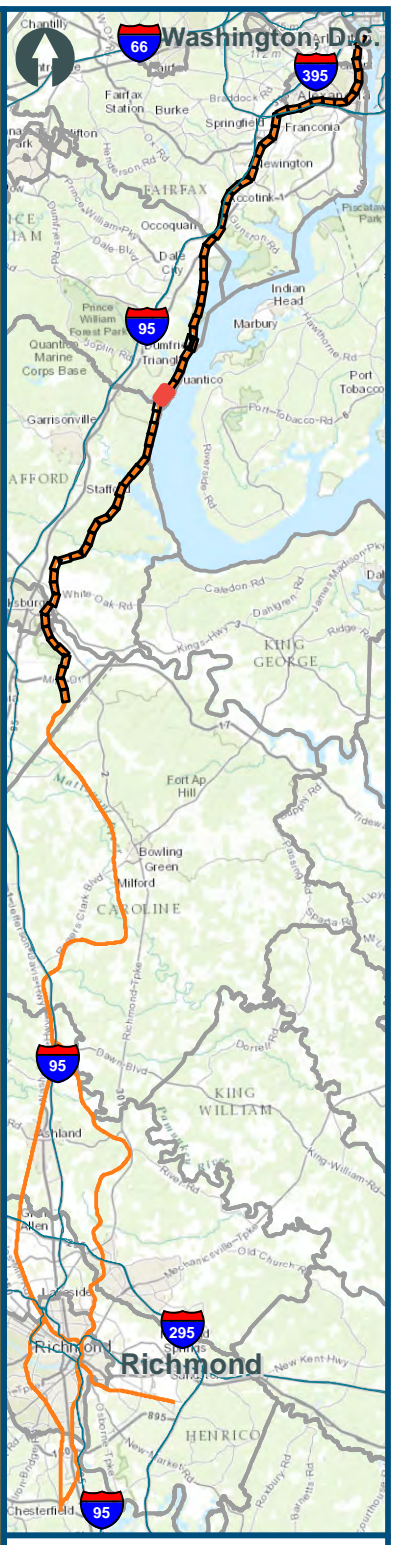
Figure K-36
Northern Virginia
West
Alignment Option

\\dlismain\GIS_DATA\GIS\Projects\011545_VA\DeptofRails-PublicTransportation\0239056_RAPS-4\AIDev-ConceptEng\map_docs\mxd\Alt_Tech_Report\DC2RVA_Cht6_Appendices_NOV_Weat_Alignments_11x17.mxd | Last Updated: 11.11.2015



- Legend**
- CSXT Mileposts
 - Third Track Under Construction by CSXT
 - Existing Track
 - New Track
 - Shifted Track
 - CSXT Right-of-Way
 - Streams

Figure K-37
Northern Virginia
West
Alignment Option



0 150 300
 Feet
 1 inch = 300 feet
 @ 11 x 17 inches
 Projection: Lambert Conformal Conic
 State Plane Virginia North FIPS 4501 Feet
 North American Datum of 1983
 Imagery: Bing Map Aerial

- Legend**
- CSXT Mileposts
 - Third Track Under Construction by CSXT
 - Existing Track
 - New Track
 - Shifted Track
 - CSXT Right-of-Way
 - Streams

Figure K-39
Northern Virginia
West
Alignment Option

\\dlismain\GIS_DATA\GIS\Projects\11545_VA Dept of Rail - Public Transportation\0239056_RAPS-4\1Dev-Concept\Eng\map_docs\mxd\Alt_Tech_Report\DC2RVA_Chr6_Appendices_NOV_West_Alignments_11x17.mxd | Last Updated: 11.11.2015

\\dlismain\GIS_DATA\GIS\Projects\011545_VA\DeptofRails-PublicTransportation\0239056_RAPS-4\AIDev-Concept\Eng\map_docs\mxd\Alt_Tech_Report\DC2RVA_Chr6_Appendices_NOV_Weat_Alignments_11x17.mxd | Last Updated: 11.11.2015

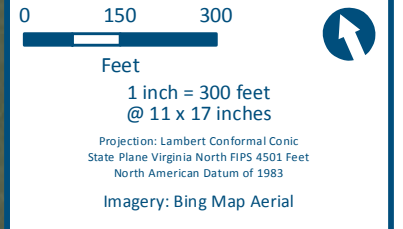
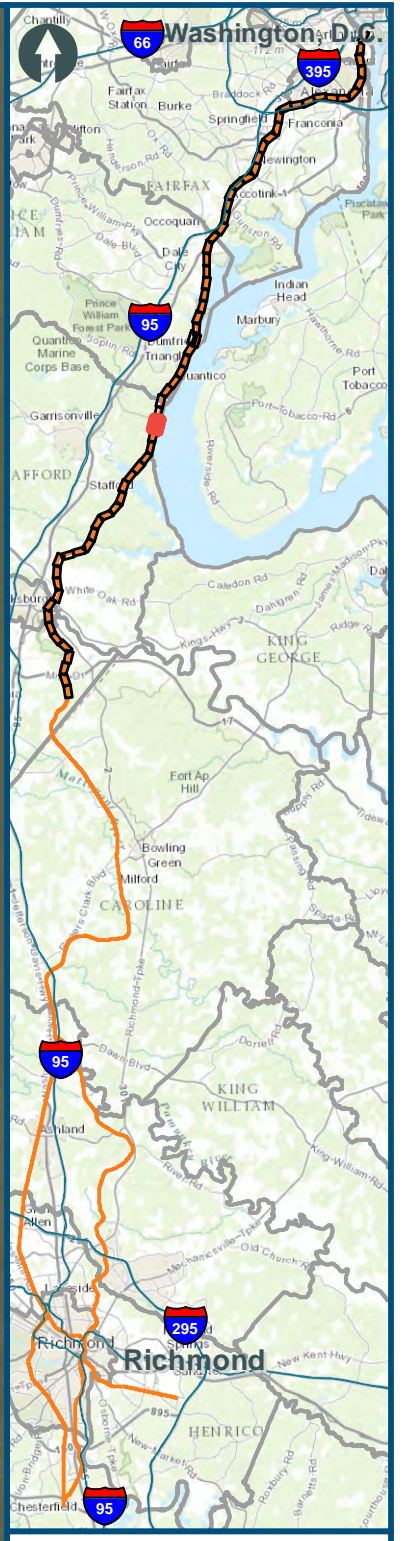


0 150 300
Feet
1 inch = 300 feet
@ 11 x 17 inches
Projection: Lambert Conformal Conic
State Plane Virginia North FIPS 4501 Feet
North American Datum of 1983
Imagery: Bing Map Aerial

- Legend**
- CSXT Mileposts
 - Third Track Under Construction by CSXT
 - Existing Track
 - New Track
 - Shifted Track
 - CSXT Right-of-Way
 - Streams

Figure K-41
Northern Virginia
West
Alignment Option

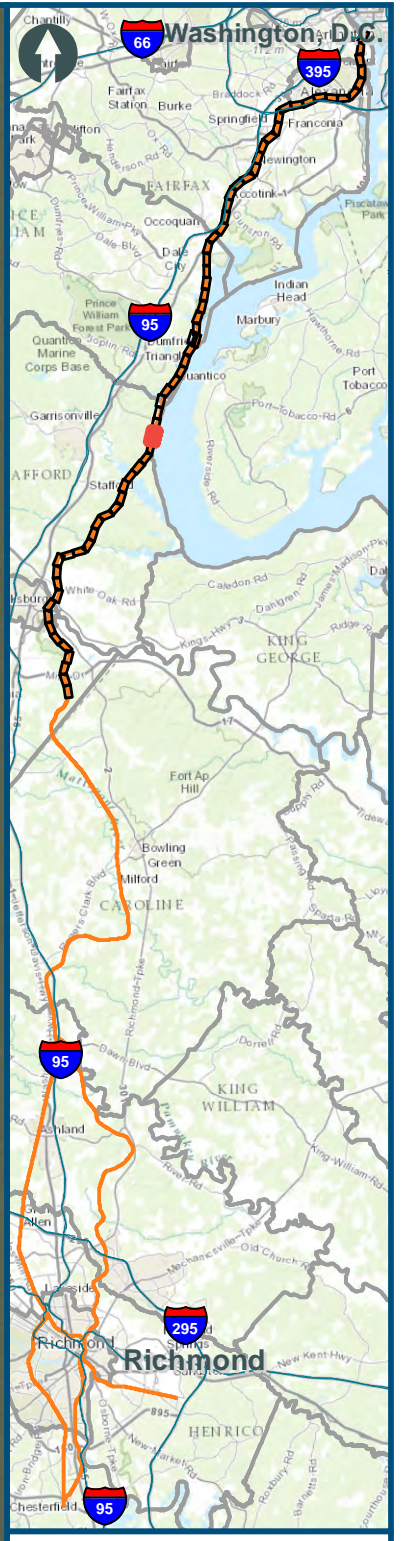
\\dlismain\GIS_DATA\GIS\Projects\011545_VA\DeptofRails-PublicTransportation\0239056_RAPS-4\AIDev-ConceptEng\map_docs\mxd\Alt_Tech_Report\DC2RVA_Cht6_Appendices_NOV_Weat_Alignments_11x17.mxd | Last Updated: 11.11.2015



- Legend**
- CSXT Mileposts
 - Third Track Under Construction by CSXT
 - Existing Track
 - New Track
 - Shifted Track
 - CSXT Right-of-Way
 - Streams

Figure K-42
Northern Virginia
West
Alignment Option

\\dlismain\GIS_DATA\GIS\Projects\011545_VA\DeptofRails-PublicTransportation\0239056_RAPS-4\AIDev-ConceptEng\map_docs\mxd\Alt_Tech_Report\DC2RVA_Cht6_Appendices_NOV_2015\Alignments_11x17.mxd | Last Updated: 11.11.2015



0 150 300
Feet
1 inch = 300 feet
@ 11 x 17 inches
Projection: Lambert Conformal Conic
State Plane Virginia North FIPS 4501 Feet
North American Datum of 1983
Imagery: Bing Map Aerial

- Legend**
- CSXT Mileposts
 - Third Track Under Construction by CSXT
 - Existing Track
 - New Track
 - Shifted Track
 - CSXT Right-of-Way
 - Streams

Figure K-43
Northern Virginia
West
Alignment Option

\\dlismain\GIS_DATA\GIS\Projects\011545_VA\DeptofRails-PublicTransportation\0239056_RAPS-4\AIDev-ConceptEng\map_docs\mxd\Alt_Tech_Report\DC2RVA_Chr6_Appendices_NOV_Weat_Alignments_11x17.mxd | Last Updated: 11.11.2015



0 150 300
Feet
1 inch = 300 feet
@ 11 x 17 inches
Projection: Lambert Conformal Conic
State Plane Virginia North FIPS 4501 Feet
North American Datum of 1983
Imagery: Bing Map Aerial

- Legend**
- CSXT Mileposts
 - Third Track Under Construction by CSXT
 - Existing Track
 - New Track
 - Shifted Track
 - CSXT Right-of-Way
 - Streams

Figure K-44
Northern Virginia
West
Alignment Option

\\dlismain\GIS_DATA\GIS\Projects\011545_VA\DeptofRails-PublicTransportation\0239056_RAPS-4\AIDev-ConceptEng\map_docs\mxd\Alt_Tech_Report\DC2RVA_Cht6_Appendices_NOV_Weat_Alignments_11x17.mxd | Last Updated: 11.11.2015

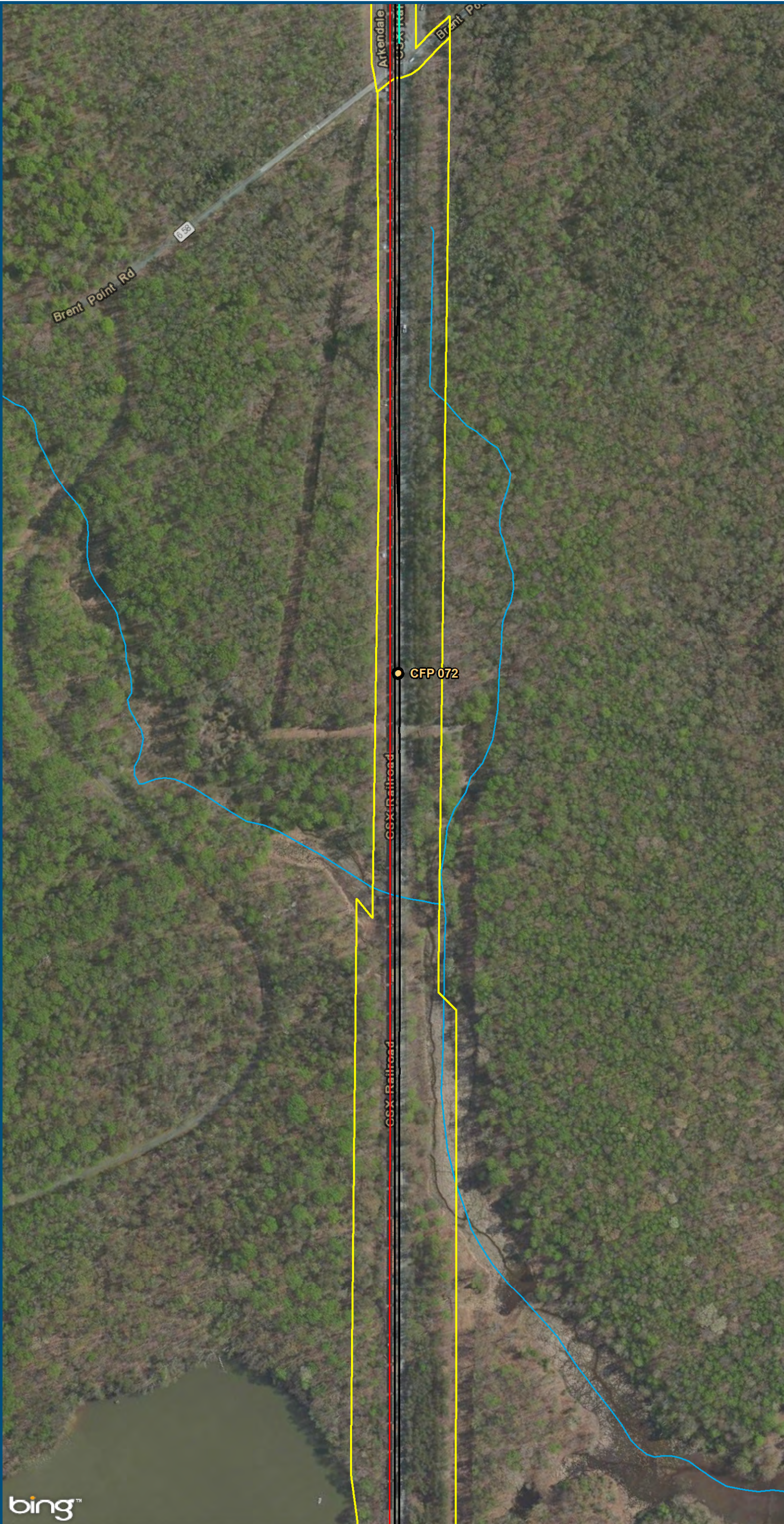


0 150 300
Feet
1 inch = 300 feet
@ 11 x 17 inches
Projection: Lambert Conformal Conic
State Plane Virginia North FIPS 4501 Feet
North American Datum of 1983
Imagery: Bing Map Aerial

- Legend**
- CSXT Mileposts
 - Third Track Under Construction by CSXT
 - Existing Track
 - New Track
 - Shifted Track
 - CSXT Right-of-Way
 - Streams

Figure K-45
Northern Virginia
West
Alignment Option

\\dlismain\GIS_DATA\GIS\Projects\011545_VA\DeptofRails-PublicTransportation\0239056_RAPS-4\AIDev-ConceptEng\map_docs\mxd\Alt_Tech_Report\DC2RVA_Cht6_Appendices_NOV_Weat_Alignments_11x17.mxd | Last Updated: 11.11.2015

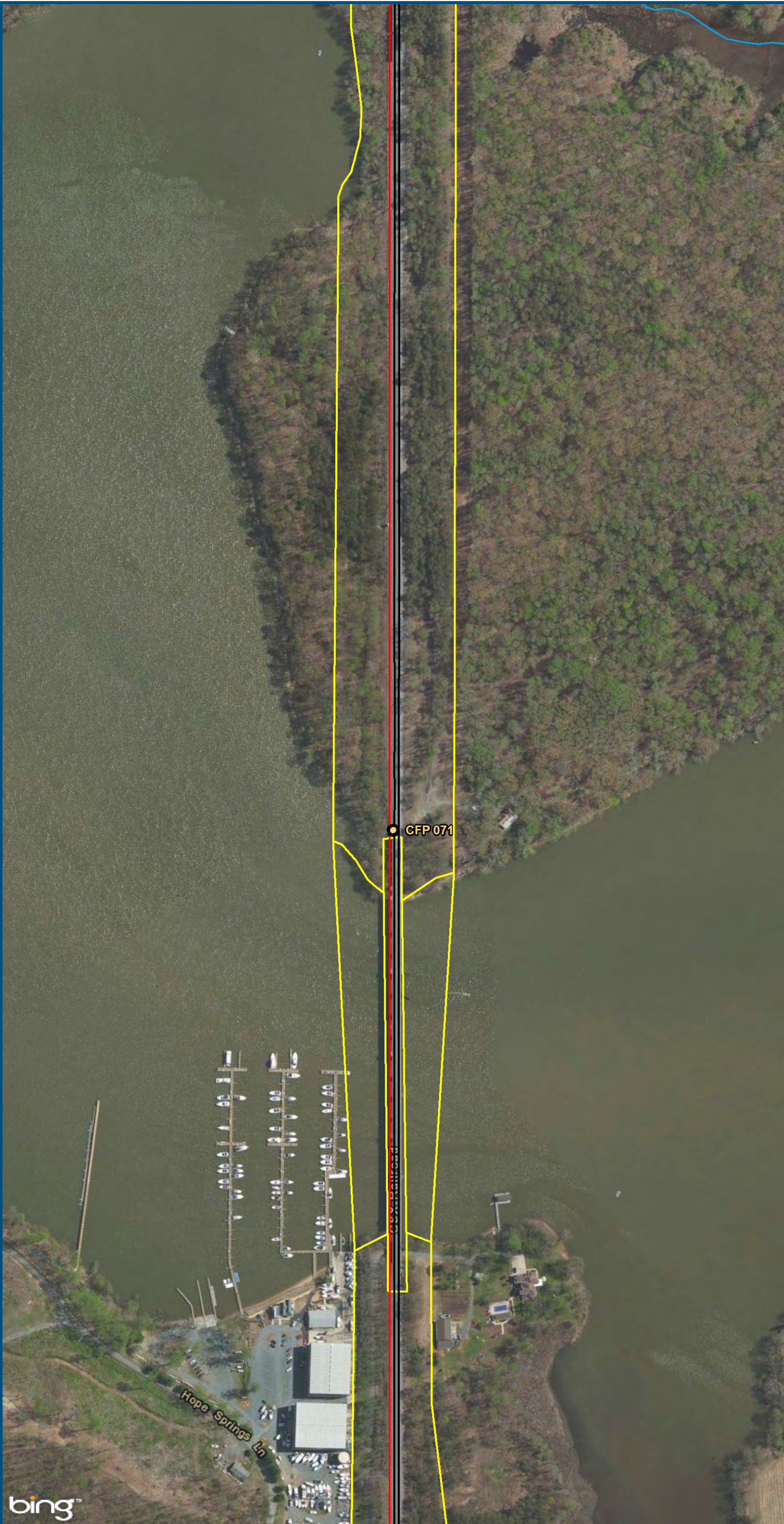


0 150 300
Feet
1 inch = 300 feet
@ 11 x 17 inches
Projection: Lambert Conformal Conic
State Plane Virginia North FIPS 4501 Feet
North American Datum of 1983
Imagery: Bing Map Aerial

- Legend**
- CSXT Mileposts
 - Third Track Under Construction by CSXT
 - Existing Track
 - New Track
 - Shifted Track
 - CSXT Right-of-Way
 - Streams

Figure K-46
Northern Virginia
West
Alignment Option

\\dlismain\GIS_DATA\GIS\Projects\011545_VA\DeptofRails-PublicTransportation\0239056_RAPS-4\AIDev-Concept\Eng\map_docs\mxd\Alt_Tech_Report\DC2RVA_Chr6_Appendices_NOV_Weat_Alignments_11x17.mxd | Last Updated: 11.04.2015

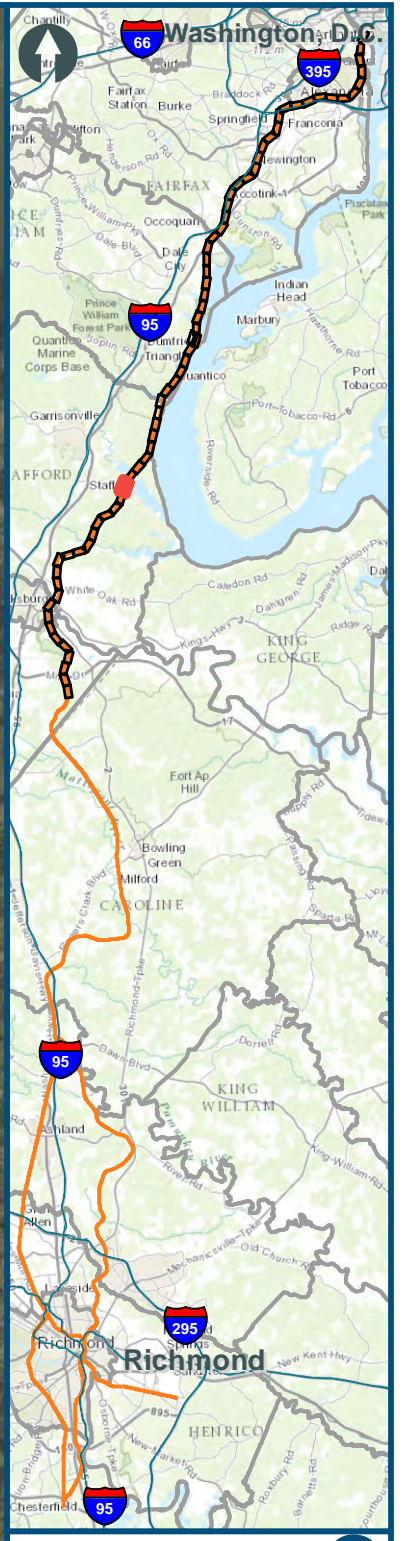


0 150 300
Feet
1 inch = 300 feet
@ 11 x 17 inches
Projection: Lambert Conformal Conic
State Plane Virginia North FIPS 4501 Feet
North American Datum of 1983
Imagery: Bing Map Aerial

- Legend**
- CSXT Mileposts
 - Existing Track
 - New Track
 - Shifted Track
 - CSXT Right-of-Way
 - Streams

Figure K-47
Northern Virginia
West
Alignment Option

\\dlismain\GIS_DATA\GIS\Projects\011545_VA\DeptofRails-PublicTransportation\0239056_RAPS-4\AIDev-ConceptEng\map_docs\mxd\Alt_Tech_Report\DC2RVA_Chr6_Appendices_NOV_11_04_2015

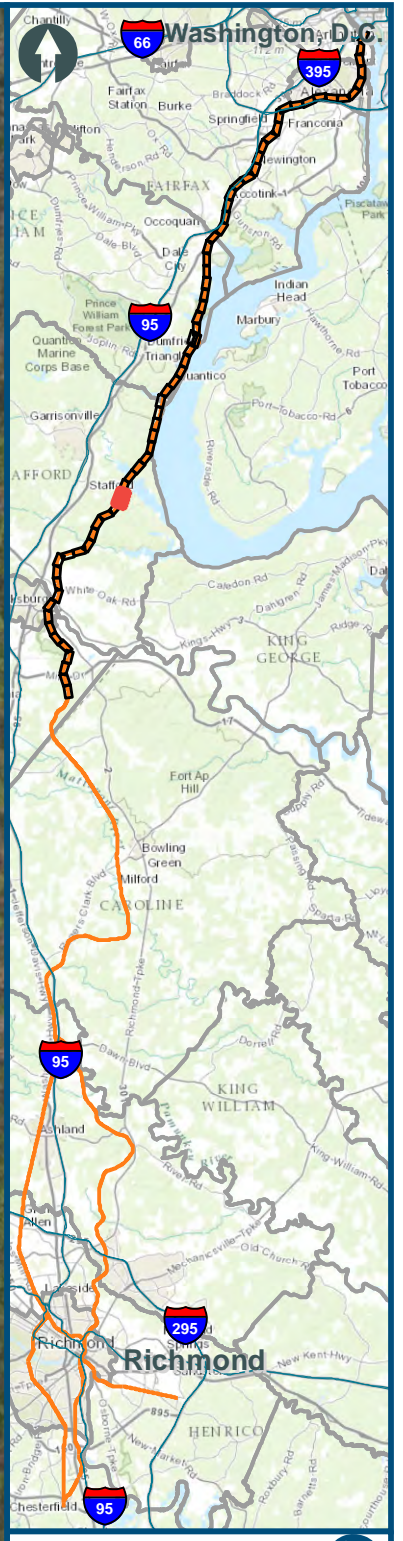


0 150 300
Feet
1 inch = 300 feet
@ 11 x 17 inches
Projection: Lambert Conformal Conic
State Plane Virginia North FIPS 4501 Feet
North American Datum of 1983
Imagery: Bing Map Aerial

- Legend**
- CSXT Mileposts
 - Existing Track
 - New Track
 - Shifted Track
 - CSXT Right-of-Way
 - Streams

Figure K-48
Northern Virginia
West
Alignment Option

\\dlismain\GIS_DATA\GIS\Projects\011545_VA\DeptofRails-PublicTransportation\0239056_RAPS-4\AIDev-ConceptEng\map_docs\mxd\Alt_Tech_Report\DC2RVA_Chr6_Appendices_NOV_11\11_04_2015



0 150 300
 Feet
 1 inch = 300 feet
 @ 11 x 17 inches
 Projection: Lambert Conformal Conic
 State Plane Virginia North FIPS 4501 Feet
 North American Datum of 1983
 Imagery: Bing Map Aerial

- Legend**
- CSXT Mileposts
 - Existing Track
 - New Track
 - Shifted Track
 - CSXT Right-of-Way
 - Streams

Figure K-49
Northern Virginia
West
Alignment Option

\\dlismain\GIS_DATA\GIS\Projects\011545_VA\DeptofRails-PublicTransportation\0239056_RAPS-4\AIDev-ConceptEng\map_docs\mxd\Alt_Tech_Report\DC2RVA_Chr6_Appendices_NOV_Weat_Alignments_11x17.mxd | Last Updated: 11_04_2015



0 150 300
Feet
1 inch = 300 feet
@ 11 x 17 inches
Projection: Lambert Conformal Conic
State Plane Virginia North FIPS 4501 Feet
North American Datum of 1983
Imagery: Bing Map Aerial

- Legend**
- CSXT Mileposts
 - Existing Track
 - New Track
 - Shifted Track
 - CSXT Right-of-Way
 - Streams

Figure K-50
Northern Virginia
West
Alignment Option

\\dlismain\GIS_DATA\GIS\Projects\011545_VA\DeptofRails-PublicTransportation\0239056_RAPS-4\AllDev-Concept\Eng\map_docs\mxd\Alt_Tech_Report\DC2RVA_Chr6_Appendices_NOV_West_Alignments_11x17.mxd | Last Updated: 11.04.2015

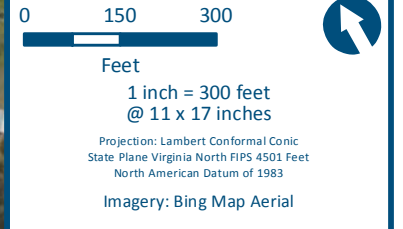
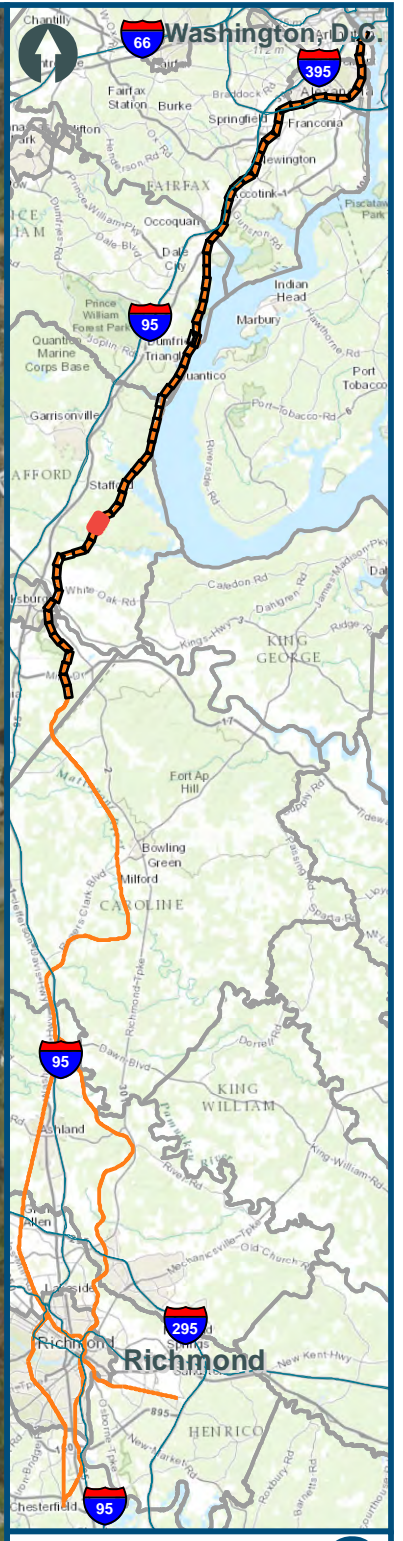
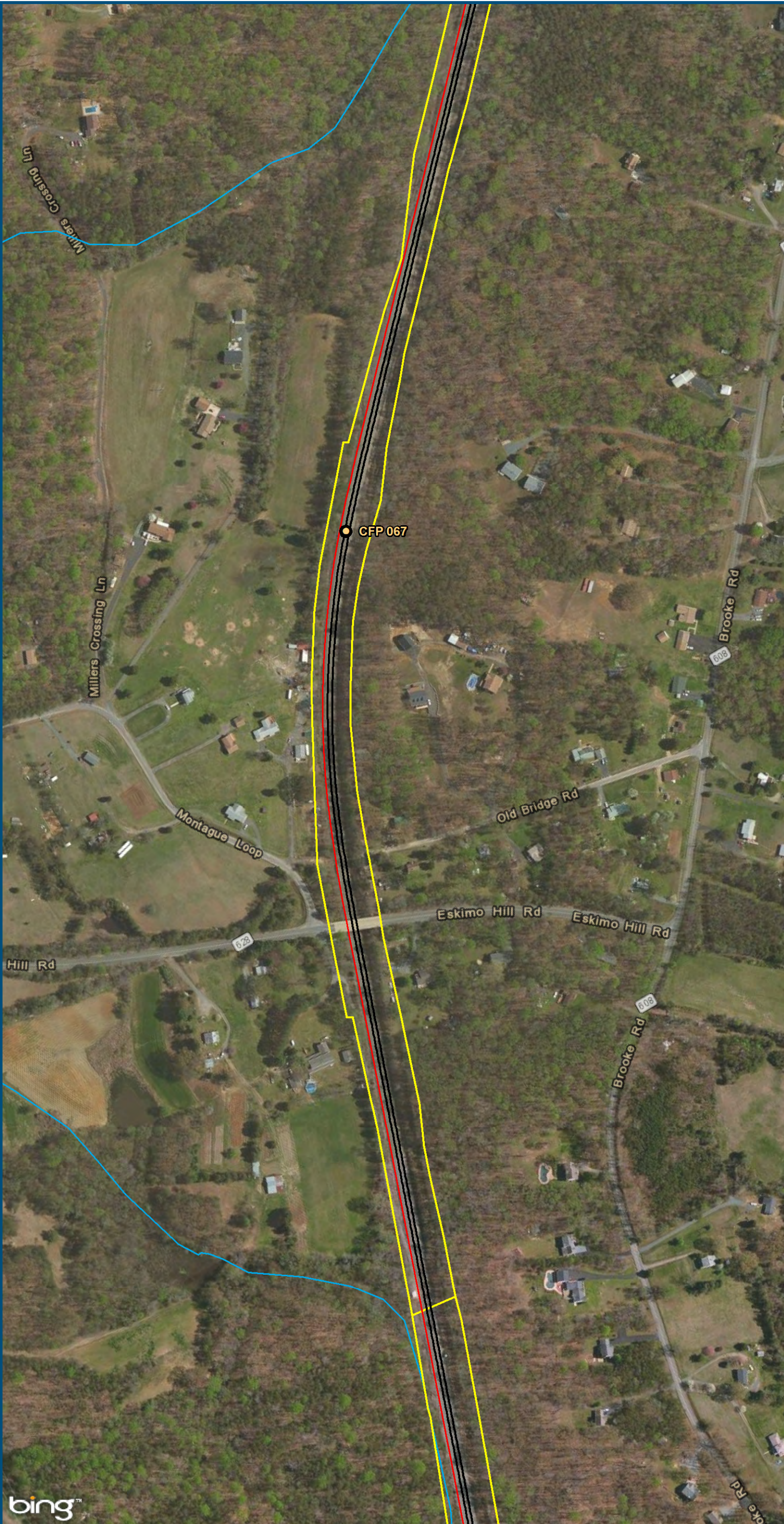


0 150 300
Feet
1 inch = 300 feet
@ 11 x 17 inches
Projection: Lambert Conformal Conic
State Plane Virginia North FIPS 4501 Feet
North American Datum of 1983
Imagery: Bing Map Aerial

- Legend**
- VRE Station
 - CSXT Mileposts
 - Existing Track
 - New Track
 - Shifted Track
 - CSXT Right-of-Way
 - Streams

Figure K-51
Northern Virginia
West
Alignment Option

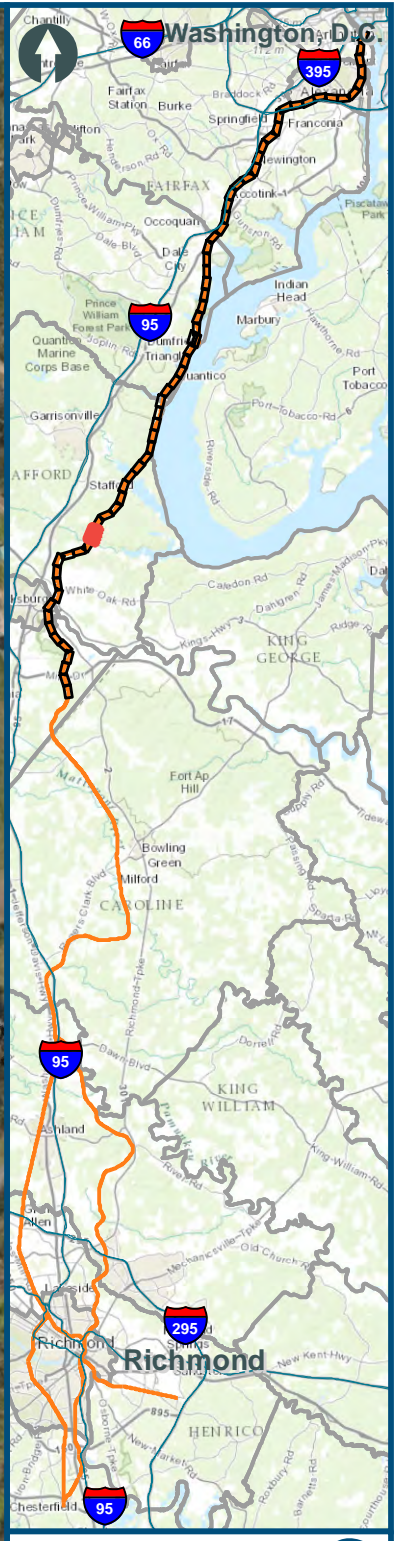
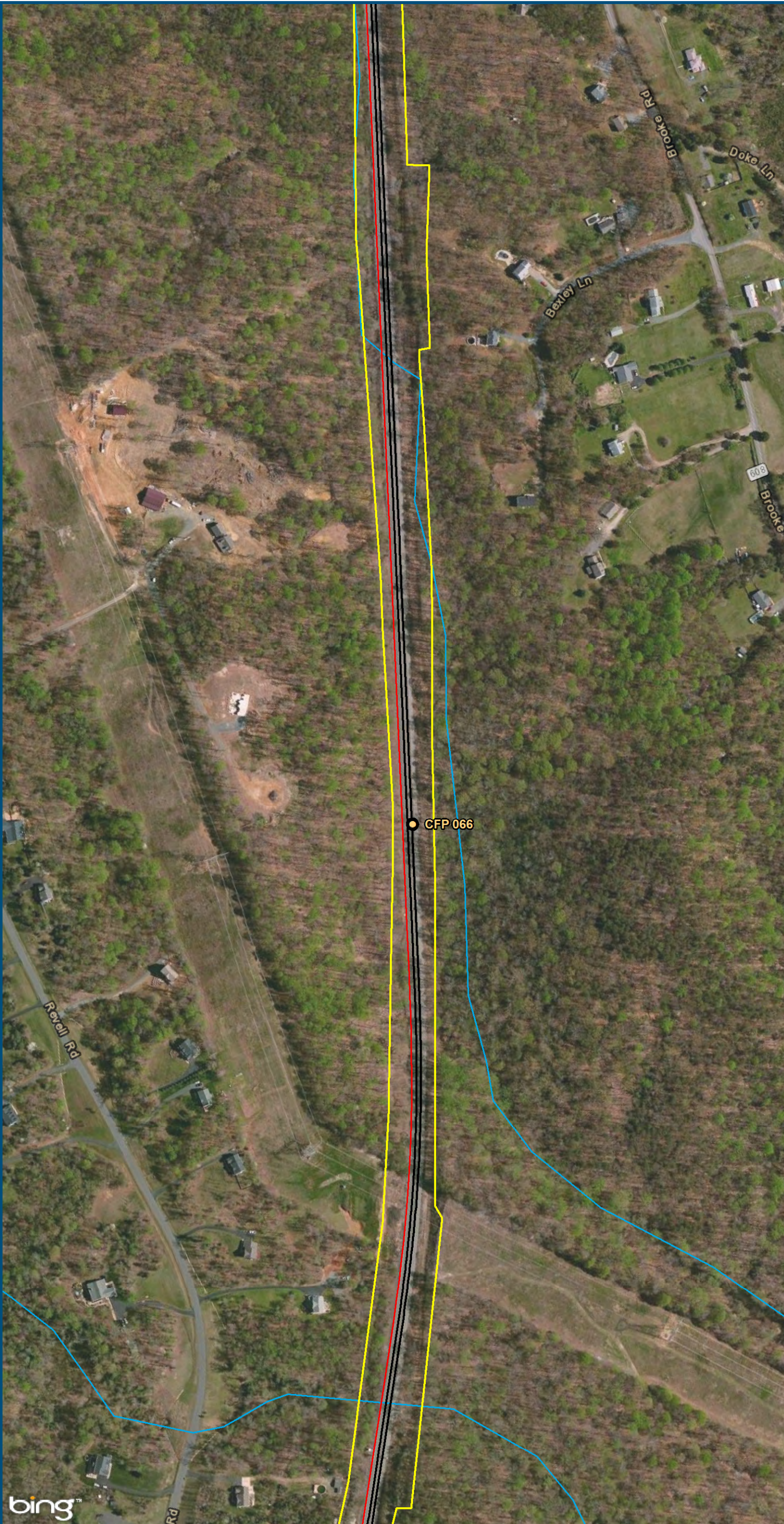
\\dlismain\GIS_DATA\GIS\Projects\011545_VA\DeptofRails-PublicTransportation\0239056_RAPS-4\AIDev-ConceptEng\map_docs\mxd\Alt_Tech_Report\DC2RVA_Chr6_Appendices_NOV_Web_Alignments_11x17.mxd | Last Updated: 11_04_2015



- Legend**
- CSXT Mileposts
 - Existing Track
 - New Track
 - Shifted Track
 - CSXT Right-of-Way
 - Streams

Figure K-52
Northern Virginia
West
Alignment Option

\\dlismain\GIS_DATA\GIS\Projects\011545_VA\DeptofRails-Public\Transportation\0239056_RAPS-4\AIDev-Concept\Eng\map_docs\mxd\Alt_Tech_Report\DC2RVA_Cht6_Appendices_NOV_West_Alignments_11x17.mxd | Last Updated: 11.04.2015

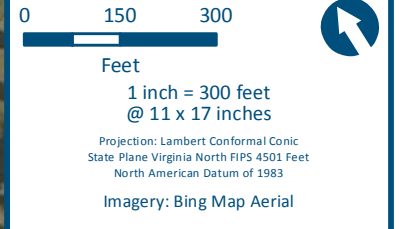
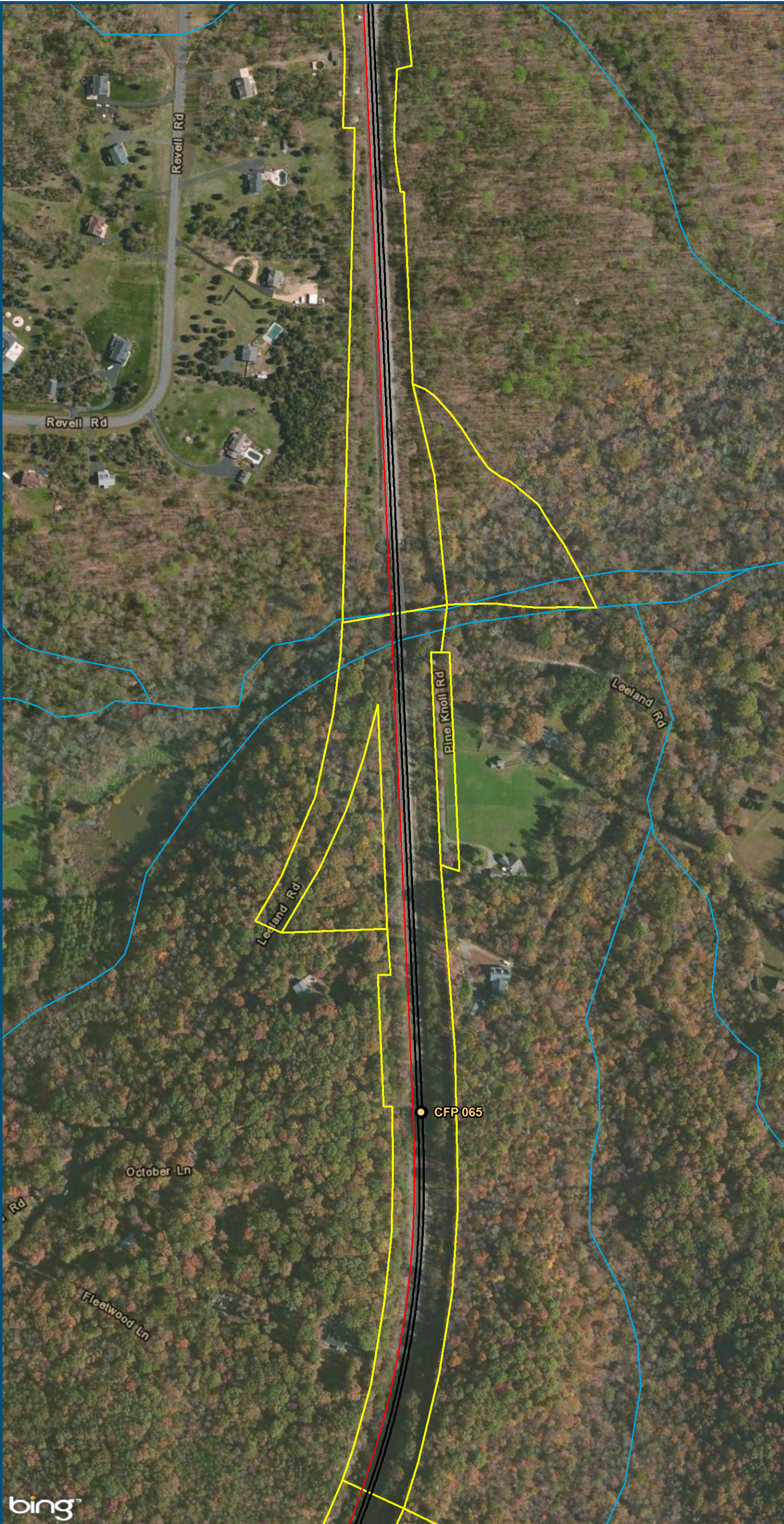


0 150 300
Feet
1 inch = 300 feet
@ 11 x 17 inches
Projection: Lambert Conformal Conic
State Plane Virginia North FIPS 4501 Feet
North American Datum of 1983
Imagery: Bing Map Aerial

- Legend**
- CSXT Mileposts
 - Existing Track
 - New Track
 - Shifted Track
 - CSXT Right-of-Way
 - Streams

Figure K-53
Northern Virginia
West
Alignment Option

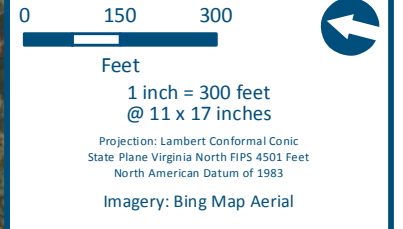
\\dlismain\GIS_DATA\GIS\Projects\011545_VA\DeptofRails-PublicTransportation\0239056_RAPS-4\AllDev-Concept\Eng\map_docs\mxd\Alt_Tech_Report\DC2RVA_Cht6_Appendices_NOV_2015.mxd | Last Updated: 11_04_2015



- Legend**
- CSXT Mileposts
 - Existing Track
 - New Track
 - Shifted Track
 - CSXT Right-of-Way
 - Streams

Figure K-54
Northern Virginia
West
Alignment Option

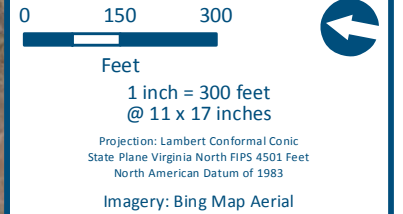
\\dlismain\GIS_DATA\GIS\Projects\011545_VA\DeptofRails-PublicTransportation\0239056_RAPS-4\AIDev-ConceptEng\map_docs\mxd\Alt_Tech_Report\DC2RVA_Chr6_Appendices_NOV_Weat_Alignments_11x17.mxd | Last Updated: 11_04_2015



- Legend**
- CSXT Mileposts
 - Existing Track
 - New Track
 - Shifted Track
 - CSXT Right-of-Way
 - Streams

Figure K-55
Northern Virginia
West
Alignment Option

\\dlismain\GIS_DATA\GIS\Projects\011545_VA\DeptofRails-PublicTransportation\0239056_RAPS-4\AllDev-Concept\Eng\map_docs\mxd\Alt_Tech_Report\DC2RVA_Ch6_Appendices_NOV_West_Alignments_11x17.mxd | Last Updated: 11.04.2015



- Legend**
- VRE Station
 - CSXT Mileposts
 - Existing Track
 - New Track
 - Shifted Track
 - CSXT Right-of-Way
 - Streams

Figure K-56
Northern Virginia
West
Alignment Option

\\dlismain\GIS_DATA\GIS\Projects\11545_VA\DeptofRails-PublicTransportation\0239056_RAPS-4\AIDev-Concept\Eng\map_docs\mxd\Alt_Tech_Report\DC2RVA_Cht6_Appendices_NOV_Weat_Alignments_11x17.mxd | Last Updated: 11_04_2015

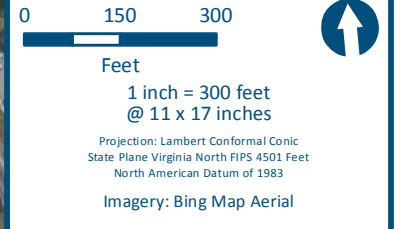
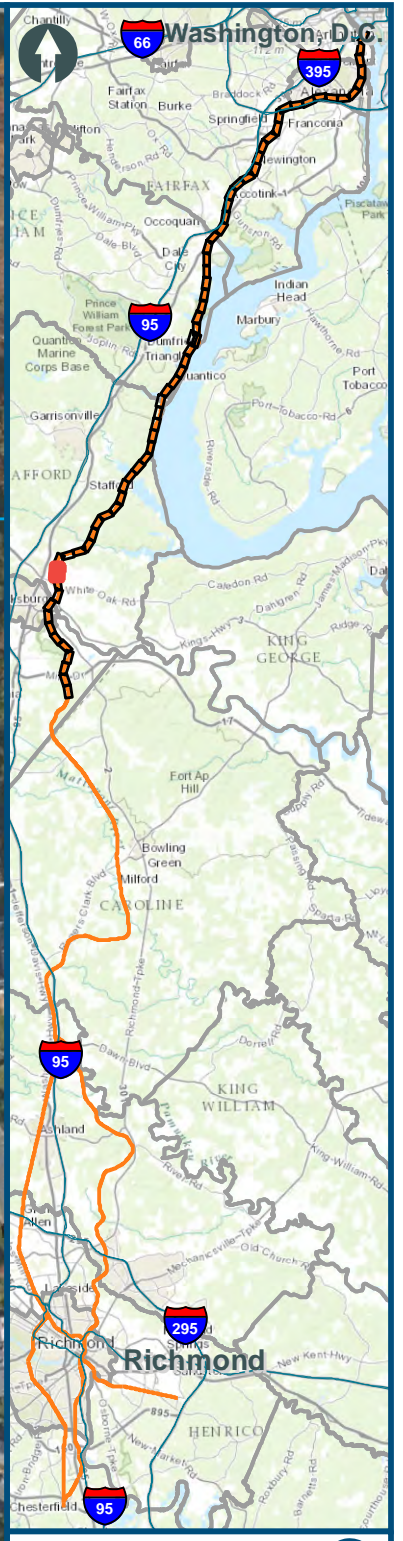
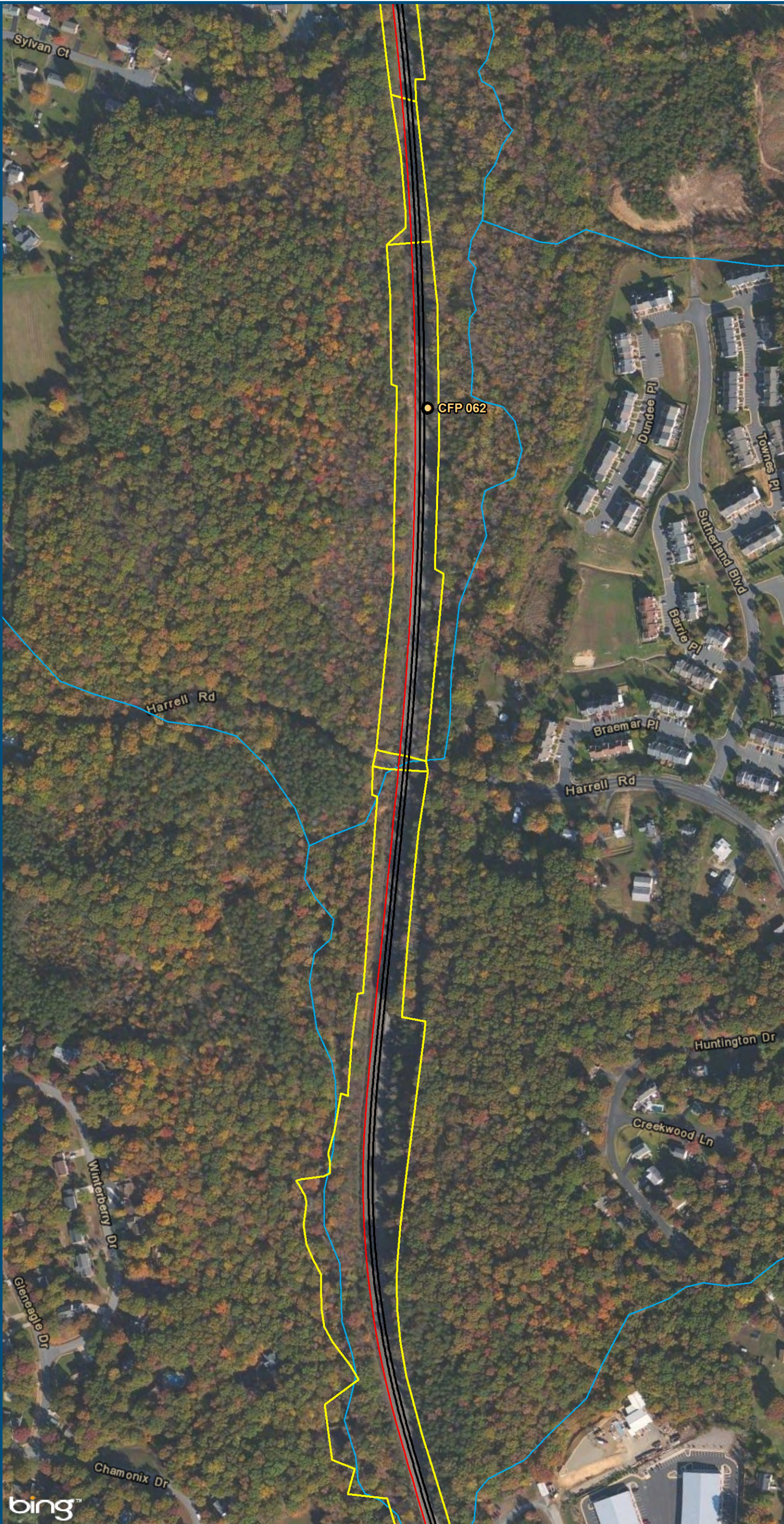


0 150 300
Feet
1 inch = 300 feet
@ 11 x 17 inches
Projection: Lambert Conformal Conic
State Plane Virginia North FIPS 4501 Feet
North American Datum of 1983
Imagery: Bing Map Aerial

- Legend**
- CSXT Mileposts
 - Existing Track
 - New Track
 - Shifted Track
 - ▭ CSXT Right-of-Way
 - Streams

Figure K-57
Northern Virginia
West
Alignment Option

\\dlismain\GIS_DATA\GIS\Projects\011545_VA\DeptofRails-PublicTransportation\0239056_RAPS-4\AllDev-Concept\Eng\map_docs\mxd\Alt_Tech_Report\DC2RVA_Cht6_Appendices_NOV_West_Alignments_11x17.mxd | Last Updated: 11.04.2015









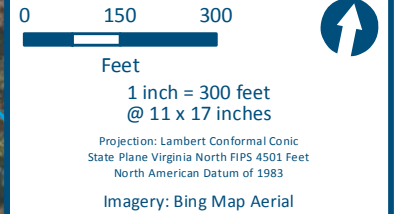
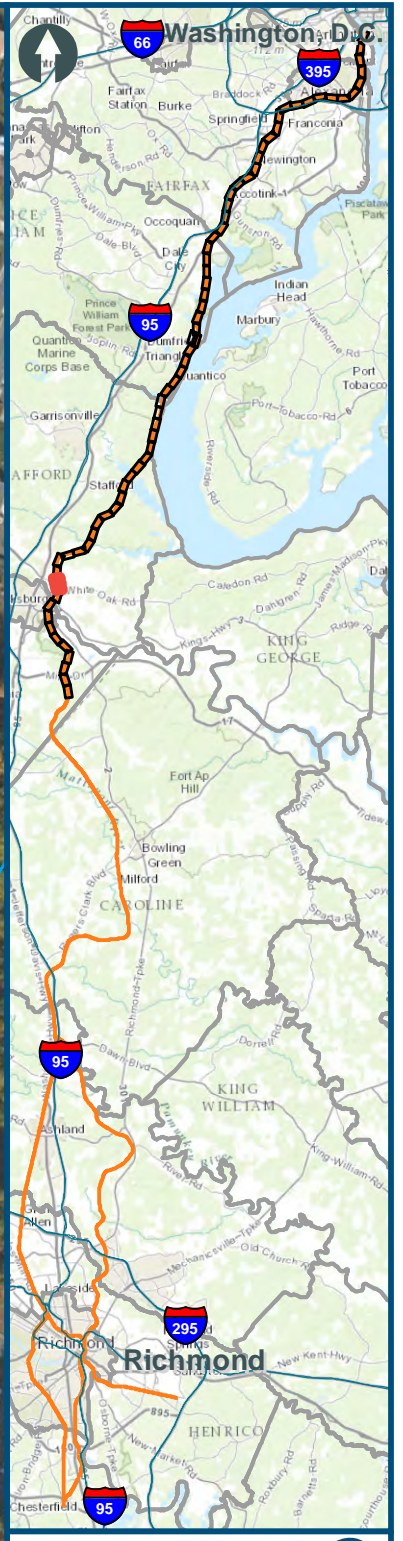
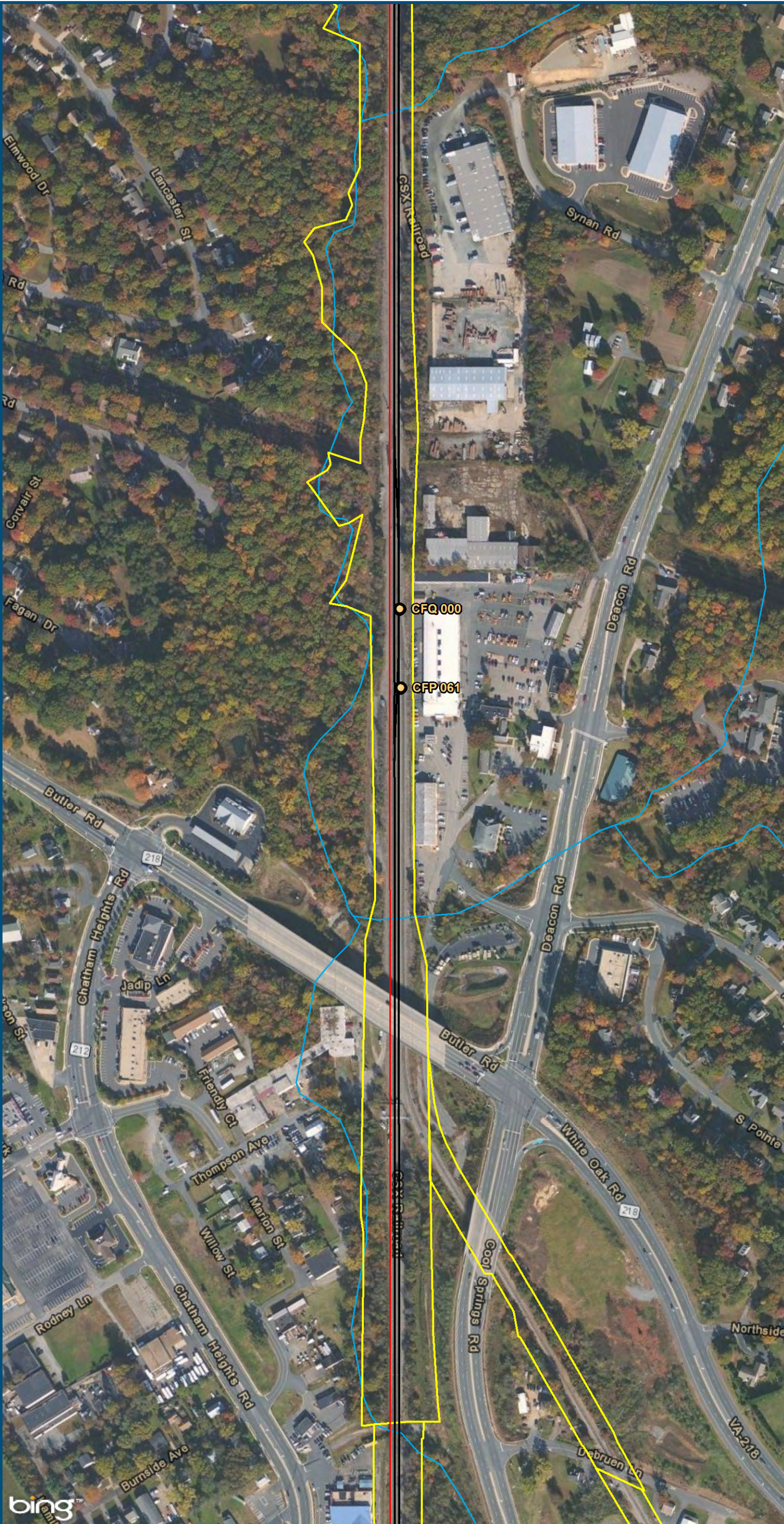
- Legend**
-  CSXT Mileposts
 -  Existing Track
 -  New Track
 -  Shifted Track
 -  CSXT Right-of-Way
 -  Streams

Figure K-58
Northern Virginia
West
Alignment Option

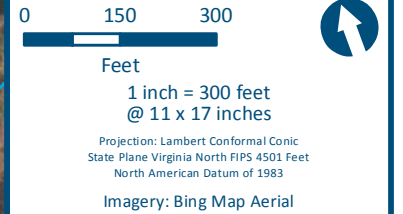
\\dlismain\GIS_DATA\GIS\Projects\011545_VA\DeptofRails-PublicTransportation\0239056_RAPS-4\AIDev-ConceptEng\map_docs\mxd\Alt_Tech_Report\DC2RVA_Ch6_Appendices_NOV_2015\West_Alignments_11x17.mxd | Last Updated: 11.04.2015



- Legend**
- CSXT Mileposts
 - Existing Track
 - New Track
 - Shifted Track
 - CSXT Right-of-Way
 - Streams

Figure K-59
Northern Virginia
West
Alignment Option

\\dlismain\GIS_DATA\GIS\Projects\011545_VA\DeptofRails-PublicTransportation\0239056_RAPS-4\AIDev-ConceptEng\map_docs\mxd\Alt_Tech_Report\DC2RVA_Chr6_Appendices_NOV_Web_Alignments_11x17.mxd | Last Updated: 11.04.2015



- Legend**
- CSXT Mileposts
 - Existing Track
 - New Track
 - Shifted Track
 - CSXT Right-of-Way
 - Streams

Figure K-60
Northern Virginia
West
Alignment Option

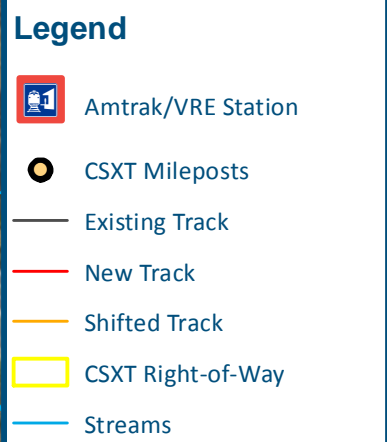
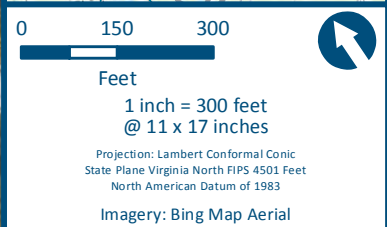
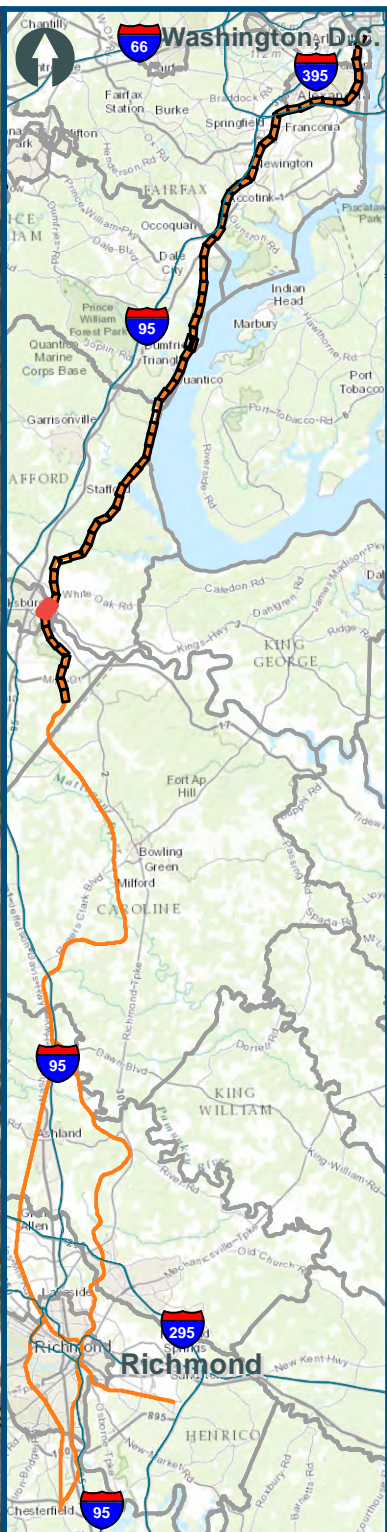
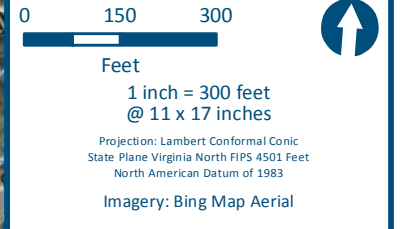
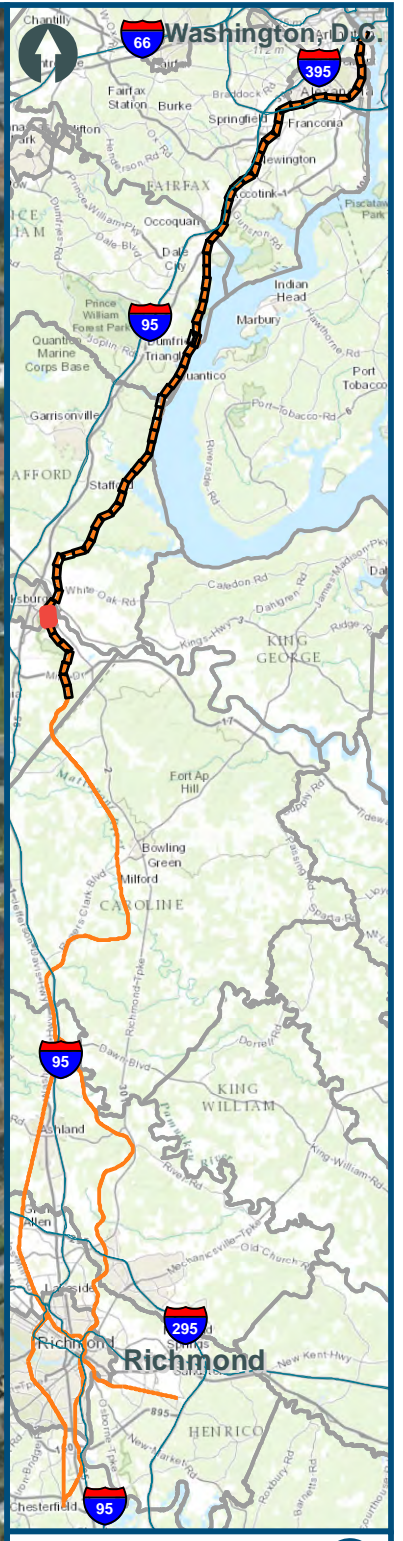


Figure K-61
Northern Virginia
West
Alignment Option

\\dlismain\GIS_DATA\GIS\Projects\11545_VA\DeptofRails-PublicTransportation\0239056_RAPS-4\AIDev-ConceptEng\map_docs\mxd\Alt_Tech_Report\DC2RVA_Ch6_Appendices_NOV_West_Alignments_11x17.mxd | Last Updated: 11.04.2015

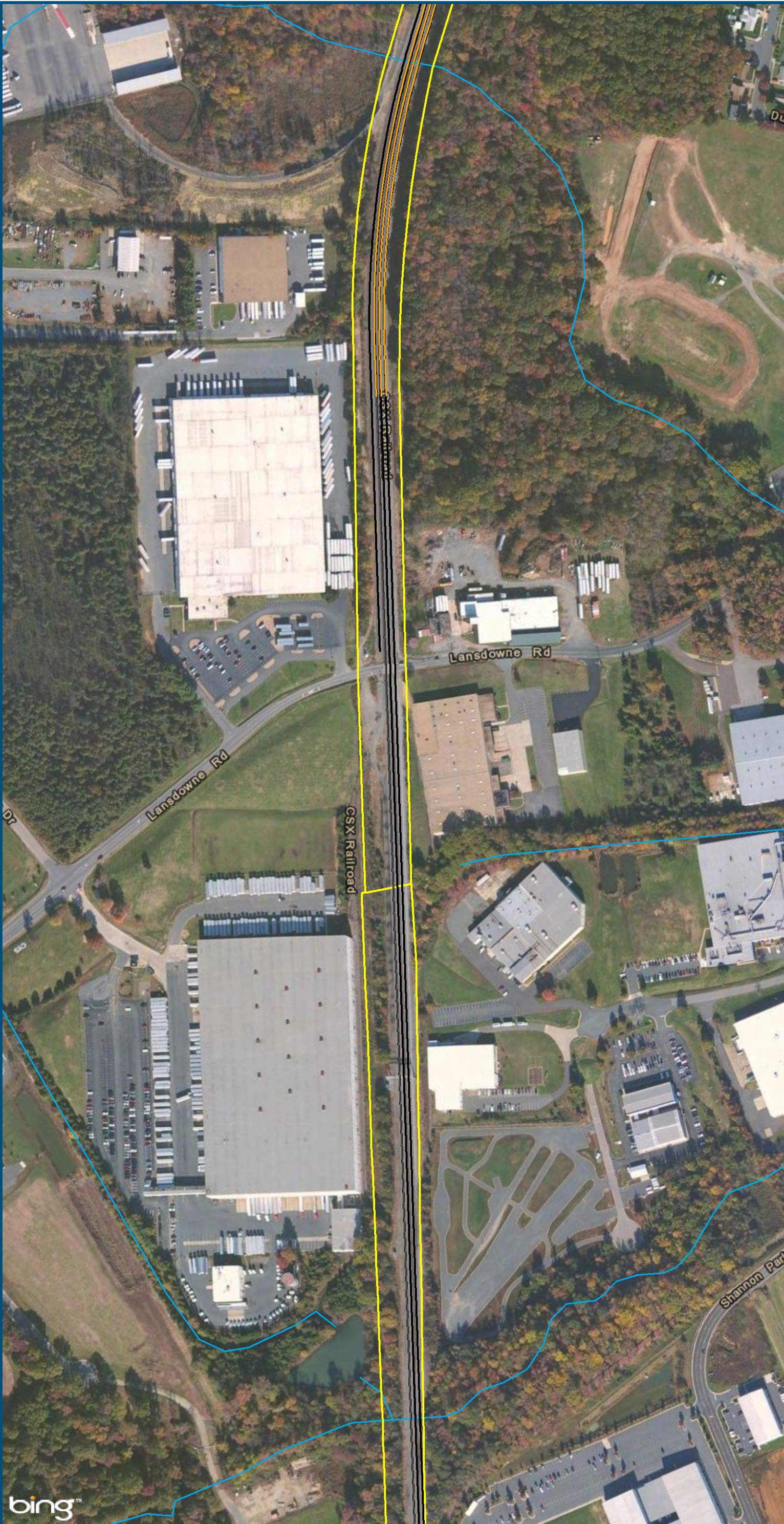
\\dlismain\GIS_DATA\GIS\Projects\011545_VA\DeptofRails-PublicTransportation\0239056_RAPS-4\AIDev-ConceptEng\map_docs\mxd\Alt_Tech_Report\DC2RVA_Chr6_Appendices_NOV_West_Alignments_11x17.mxd | Last Updated: 11.04.2015



- Legend**
- CSXT Mileposts
 - Existing Track
 - New Track
 - Shifted Track
 - CSXT Right-of-Way
 - Streams

Figure K-62
Northern Virginia
West
Alignment Option

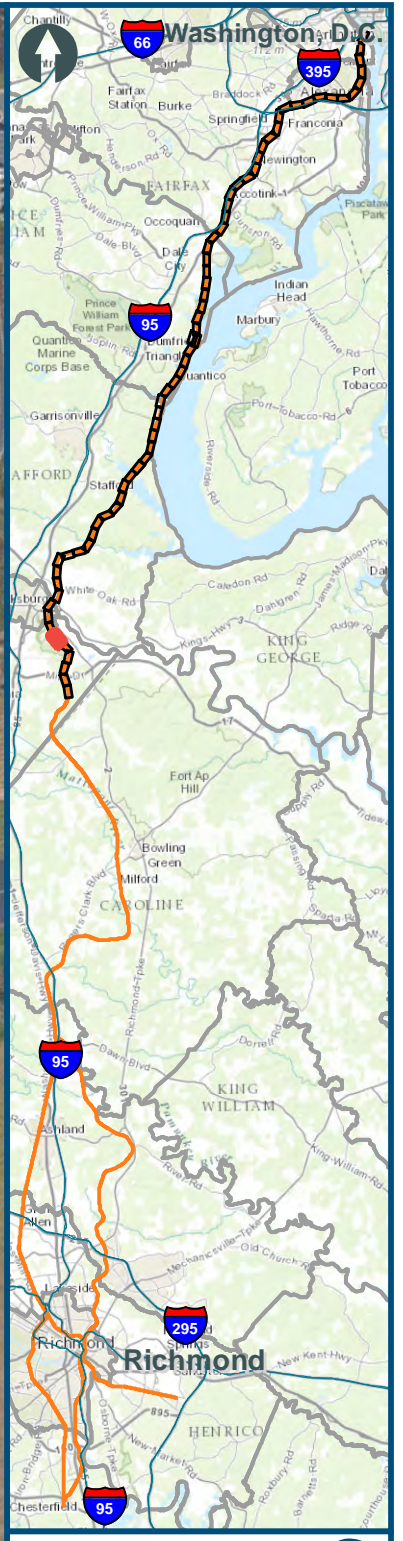
\\dlismain\GIS_DATA\GIS\Projects\011545_VA\DeptofRails-PublicTransportation\0239056_RAPS-4\AIDev-ConceptEng\map_docs\mxd\Alt_Tech_Report\DC2RVA_Chr6_Appendices_NOV_2015\Alignments_11x17.mxd | Last Updated: 11_04_2015



0 150 300
Feet
1 inch = 300 feet
@ 11 x 17 inches
Projection: Lambert Conformal Conic
State Plane Virginia North FIPS 4501 Feet
North American Datum of 1983
Imagery: Bing Map Aerial

- Legend**
- CSXT Mileposts
 - Existing Track
 - New Track
 - Shifted Track
 - CSXT Right-of-Way
 - Streams

Figure K-63
Northern Virginia
West
Alignment Option



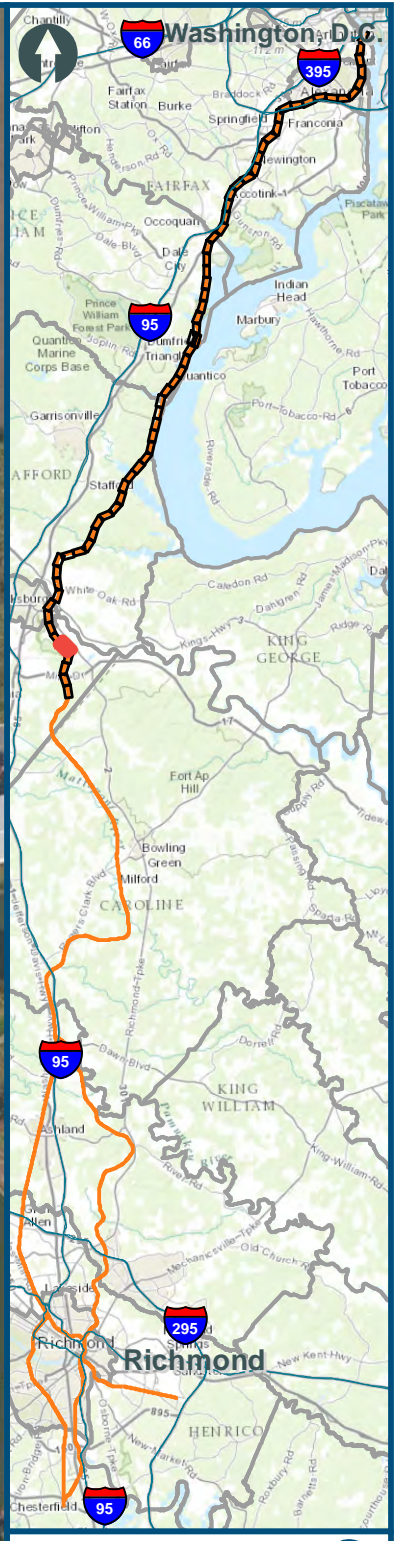
0 150 300
 Feet
 1 inch = 300 feet
 @ 11 x 17 inches
 Projection: Lambert Conformal Conic
 State Plane Virginia North FIPS 4501 Feet
 North American Datum of 1983
 Imagery: Bing Map Aerial

- Legend**
- CSXT Mileposts
 - Existing Track
 - New Track
 - Shifted Track
 - CSXT Right-of-Way
 - Streams

Figure K-64
Northern Virginia
West
Alignment Option

\\dlismain\GIS_DATA\GIS\Projects\011545_VA\DeptofRails-PublicTransportation\0239056_RAPS-4\AIDev-ConceptEng\map_docs\mxd\Alt_Tech_Report\DC2RVA_Chr6_Appendices_NOV_2015\West_Alignments_11x17.mxd | Last Updated: 11_04_2015

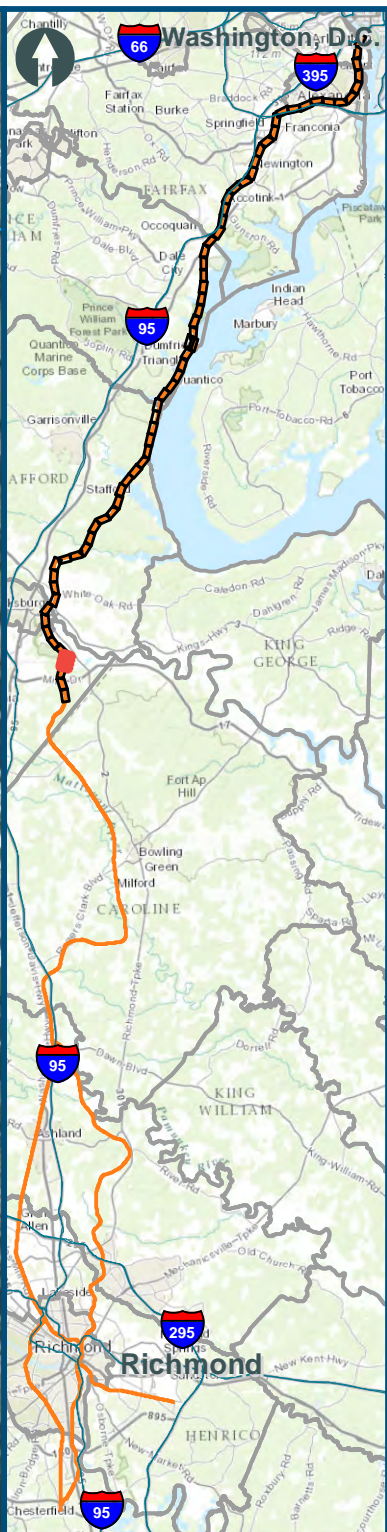
\\dlismain\GIS_DATA\GIS\Projects\011545_VA\DeptofRails-PublicTransportation\0239056_RAPS-4\AIDev-ConceptEng\map_docs\mxd\Alt_Tech_Report\DC2RVA_Chr6_Appendices_NOV_11x17.mxd | Last Updated: 11.04.2015



0 150 300
Feet
1 inch = 300 feet
@ 11 x 17 inches
Projection: Lambert Conformal Conic
State Plane Virginia North FIPS 4501 Feet
North American Datum of 1983
Imagery: Bing Map Aerial

- Legend**
- CSXT Mileposts
 - Existing Track
 - New Track
 - Shifted Track
 - CSXT Right-of-Way
 - Streams

Figure K-65
Northern Virginia
West
Alignment Option



- Legend**
- CSXT Mileposts
 - Third Track Under Construction by CSXT
 - Existing Track
 - New Track
 - Shifted Track
 - CSXT Right-of-Way
 - Streams

Figure K-66
Northern Virginia
West
Alignment Option

\\dlismain\GIS_DATA\GIS\Projects\011545_VA\DeptofRails-PublicTransportation\0239056_RAPS-4\AIDev-ConceptEngin\map_docs\mxd\Alt_Tech_Report\DC2RVA_Ch6_Appendices_NOV_West_Alignments_11x17.mxd | Last Updated: 11.11.2015

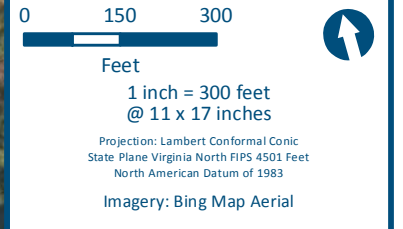
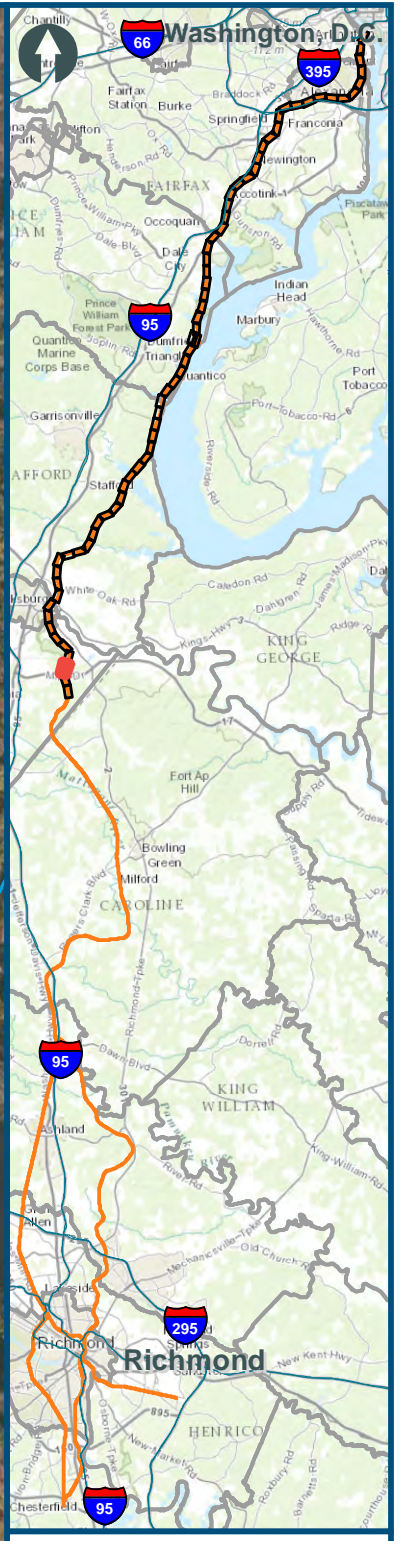


U.S. Department of Transportation
Federal Railroad Administration

www.DC2RVArail.com



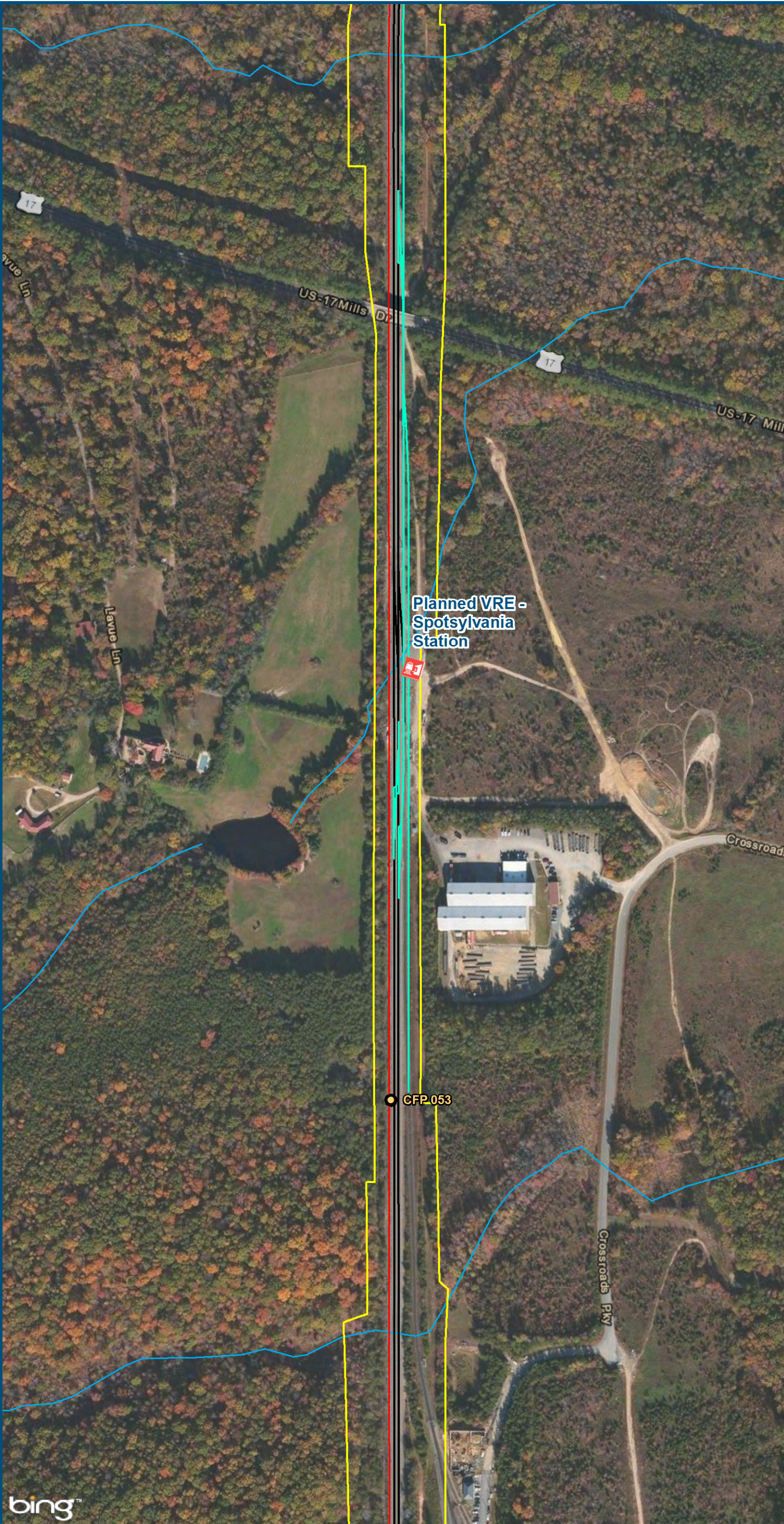
\\dlismain\GIS_DATA\GIS\Projects\011545_VA\DeptofRails-PublicTransportation\0239056_RAPS-4\AIDev-ConceptEng\map_docs\mxd\Alt_Tech_Report\DC2RVA_Cht6_Appendices_NOV_2015.mxd | Last Updated: 11.11.2015



- Legend**
- CSXT Mileposts
 - Third Track Under Construction by CSXT
 - Existing Track
 - New Track
 - Shifted Track
 - CSXT Right-of-Way
 - Streams

Figure K-67
Northern Virginia
West
Alignment Option

\\dlismain\GIS_DATA\GIS\Projects\011545_VA\DeptofRails-PublicTransportation\0239056_RAPS-4\AIDev-ConceptEng\map_docs\mxd\Alt_Tech_Report\DC2RVA_Chr6_Appendices_NOV_11\11.2015

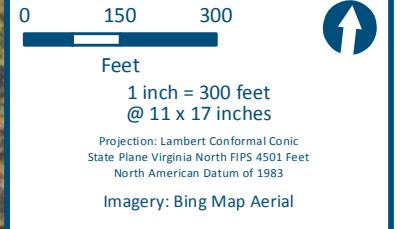
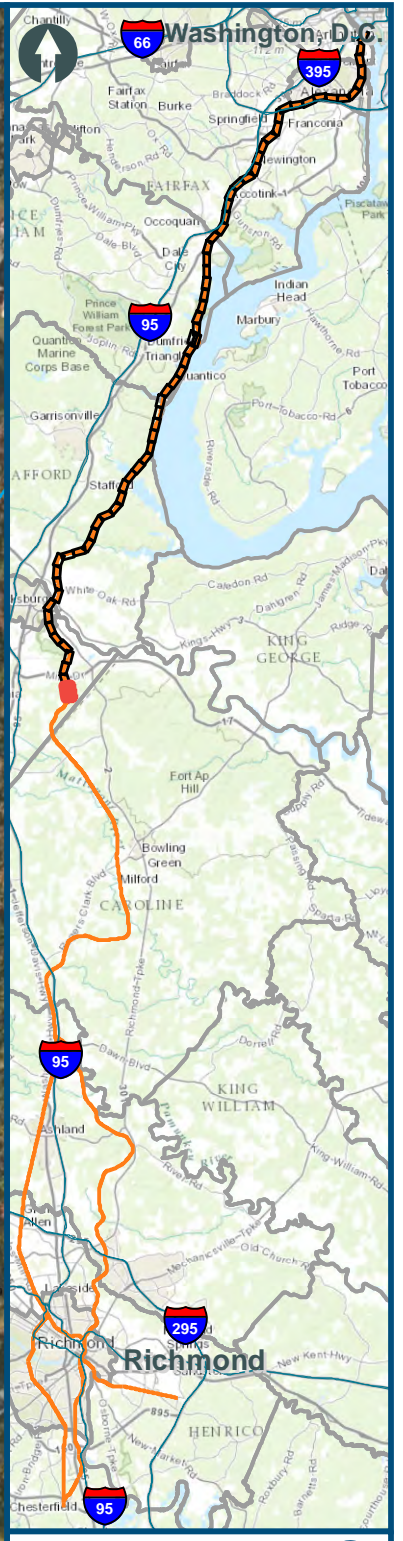
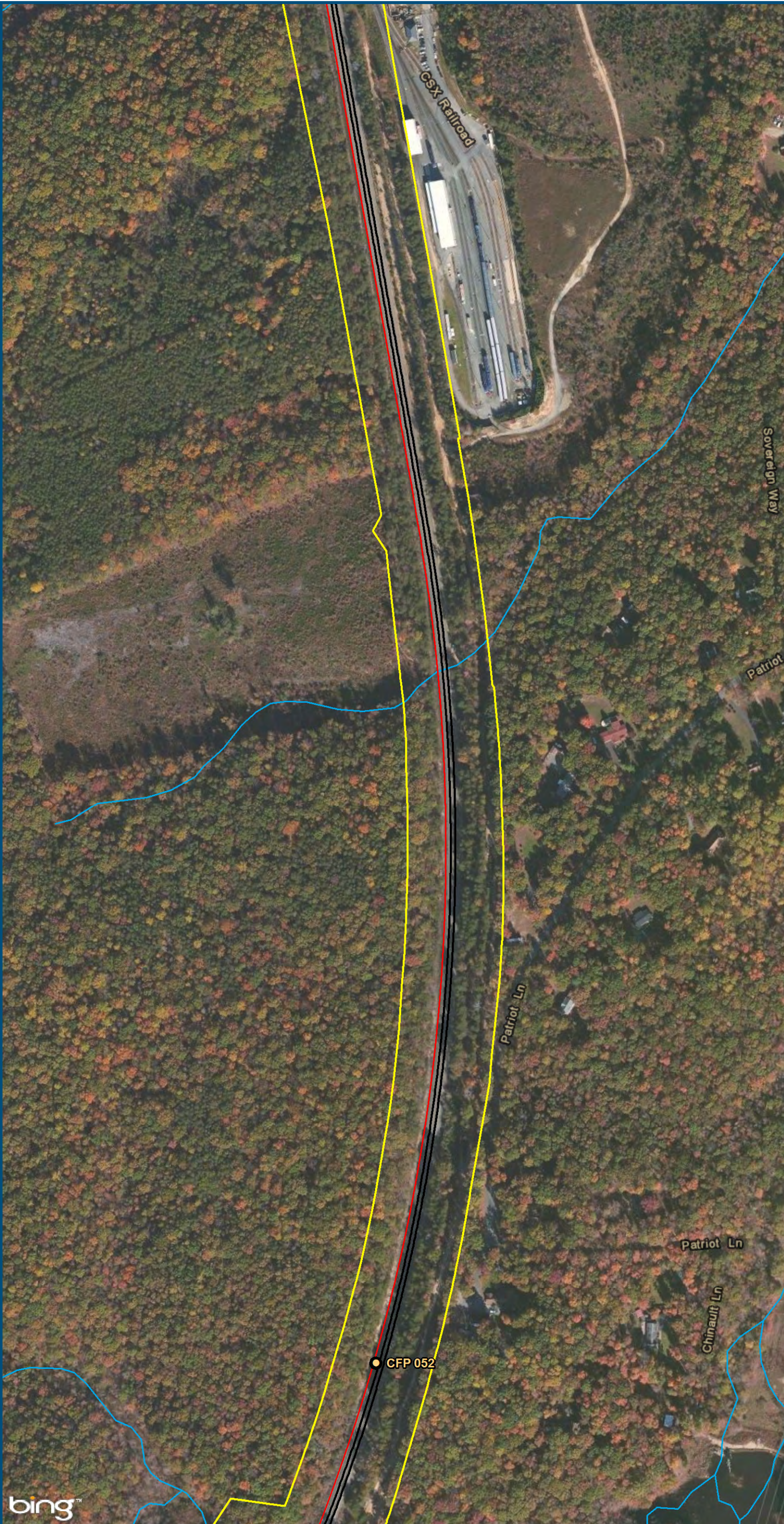


0 150 300
Feet
1 inch = 300 feet
@ 11 x 17 inches
Projection: Lambert Conformal Conic
State Plane Virginia North FIPS 4501 Feet
North American Datum of 1983
Imagery: Bing Map Aerial

- Legend**
- VRE Station
 - CSXT Mileposts
 - Third Track Under Construction by CSXT
 - Existing Track
 - New Track
 - Shifted Track
 - CSXT Right-of-Way
 - Streams

Figure K-68
Northern Virginia
West
Alignment Option

\\dlismain\GIS_DATA\GIS\Projects\011545_VA\DeptofRails-PublicTransportation\0239056_RAPS-4\AIDev-ConceptEng\map_docs\mxd\Alt_Tech_Report\DC2RVA_Chr6_Appendices_NOV_Weat_Alignments_11x17.mxd | Last Updated: 11.04.2015



- Legend**
- CSXT Mileposts
 - Existing Track
 - New Track
 - Shifted Track
 - CSXT Right-of-Way
 - Streams

Figure K-69
Northern Virginia
West
Alignment Option