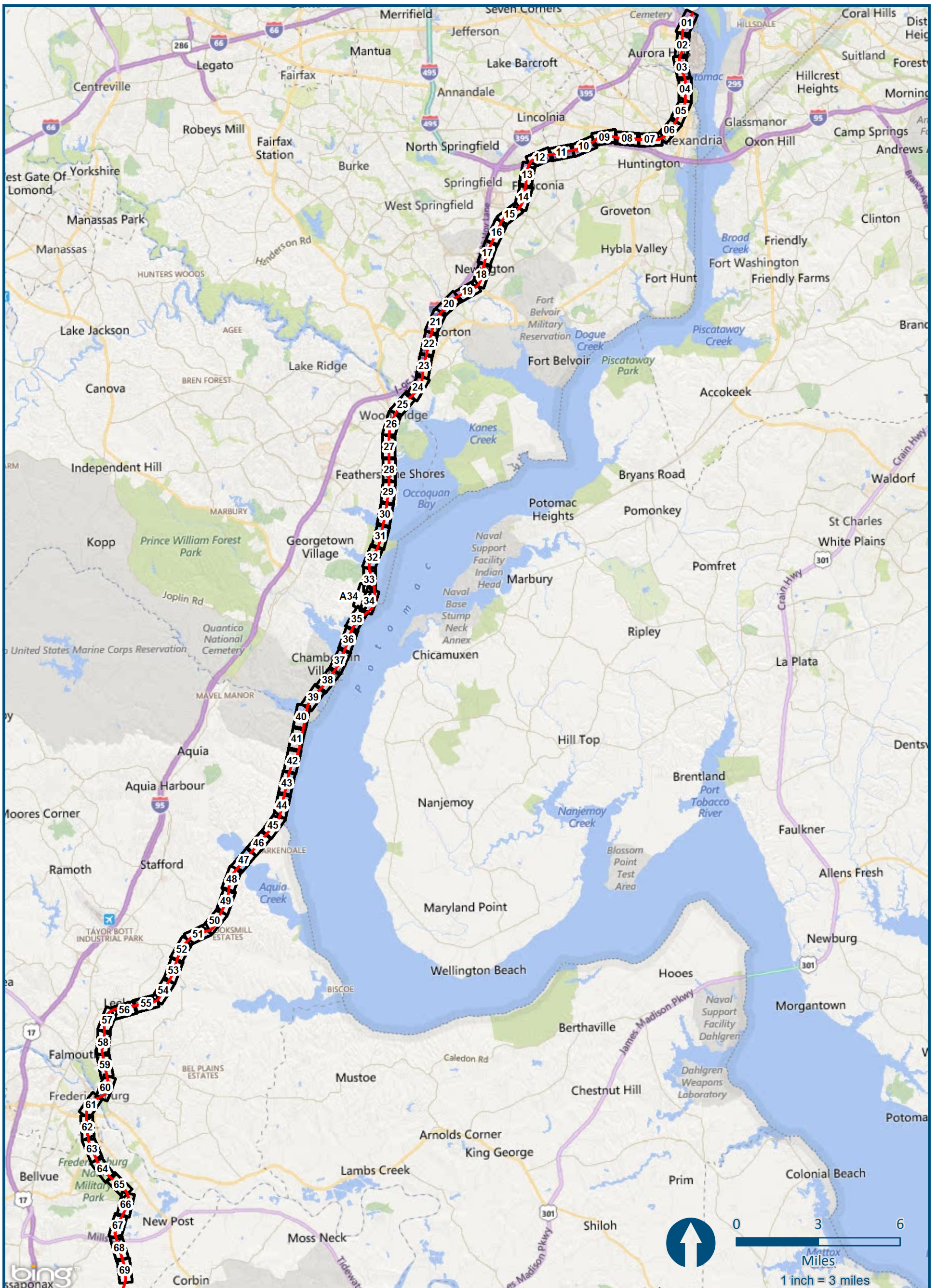


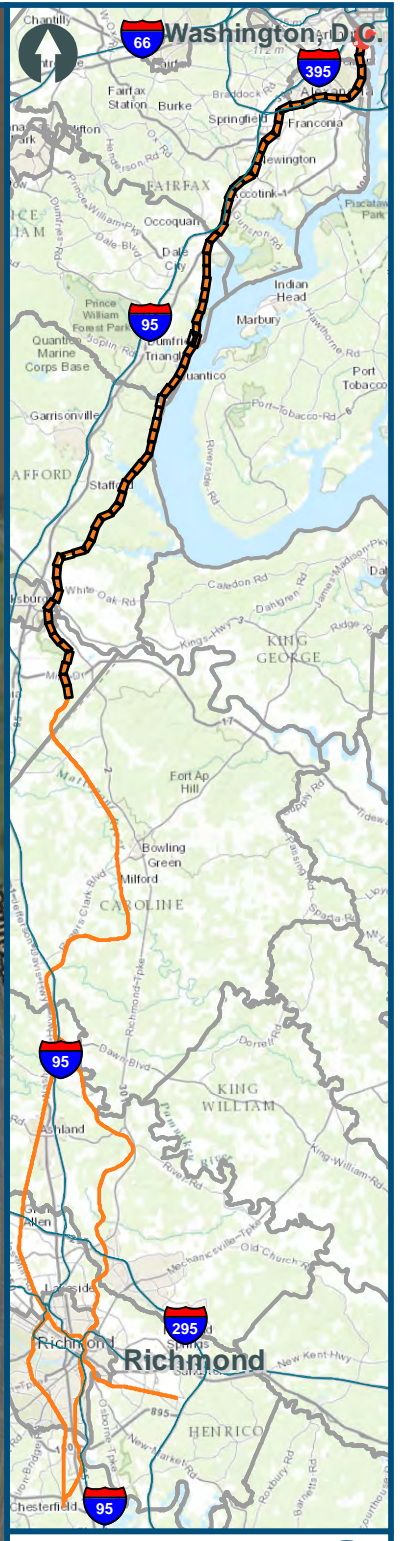
## Northern Virginia (NOV) Project Section 2006 Report Alignment Option Index Map



\\dlsmain\GIS\_DATA\GIS\Projects\011545\_VA\Dev\Rail\Public\Trans\Portation\0239056\_RAPS-4\AI\Dev-Concept\Eng\map\_docs\mxd\All\_Tech\_Report\DC2RVA\_Appendix\_AlignmentIndex\_11x17.mxd | Last Updated: 11.05.2015



\\dlismain\GIS\_DATA\GIS\Projects\11545\_VA\DeptofRails-Public\Transportation\0239056\_RAPS-4\AIDev-Concept\Eng\map\_docs\mxd\Alt\_Tech\_Report\DC2RVA\_Chr6\_Appendices\_NOV\_2006\Report\_Alignments\_11x17.mxd | Last Updated: 11.04.2015



0 150 300  
Feet  
1 inch = 300 feet  
@ 11 x 17 inches  
Projection: Lambert Conformal Conic  
State Plane Virginia North FIPS 4501 Feet  
North American Datum of 1983  
Imagery: Bing Map Aerial

- Legend**
- CSXT Mileposts
  - Existing Track
  - New Track
  - CSXT Right-of-Way
  - Streams

**Figure L-1**  
**Northern Virginia**  
**2006 Report**  
**Alignment Option**



\\dlmain\GIS\_DATA\GIS\Projects\11545\_VA\DeptofRails-PublicTransportation\0239056\_RAPS-4\AllDev-Concept\Eng\map\_docs\mxd\Alt\_Tech\_Report\DC2RVA\_Ch6\_Appendices\_NOV\_2006\Report\_Alignments\_11x17.mxd | Last Updated: 11.04.2015



0 150 300  
 Feet  
 1 inch = 300 feet  
 @ 11 x 17 inches  
 Projection: Lambert Conformal Conic  
 State Plane Virginia North FIPS 4501 Feet  
 North American Datum of 1983  
 Imagery: Bing Map Aerial

- Legend**
- WMATA
  - VRE Station
  - CSXT Mileposts
  - Existing Track
  - New Track
  - CSXT Right-of-Way
  - Streams

**Figure L-2**  
**Northern Virginia**  
**2006 Report**  
**Alignment Option**



\\dlismain\GIS\_DATA\GIS\Projects\11545\_VA\DeptofRails-PublicTransportation\0239056\_RAPS-4\AIDev-ConceptEng\map\_docs\mxd\Alt\_Tech\_Report\DC2RVA\_Chr6\_Appendices\_NOV\_2006\Report\_Alignments\_11x17.mxd | Last Updated: 11.04.2015



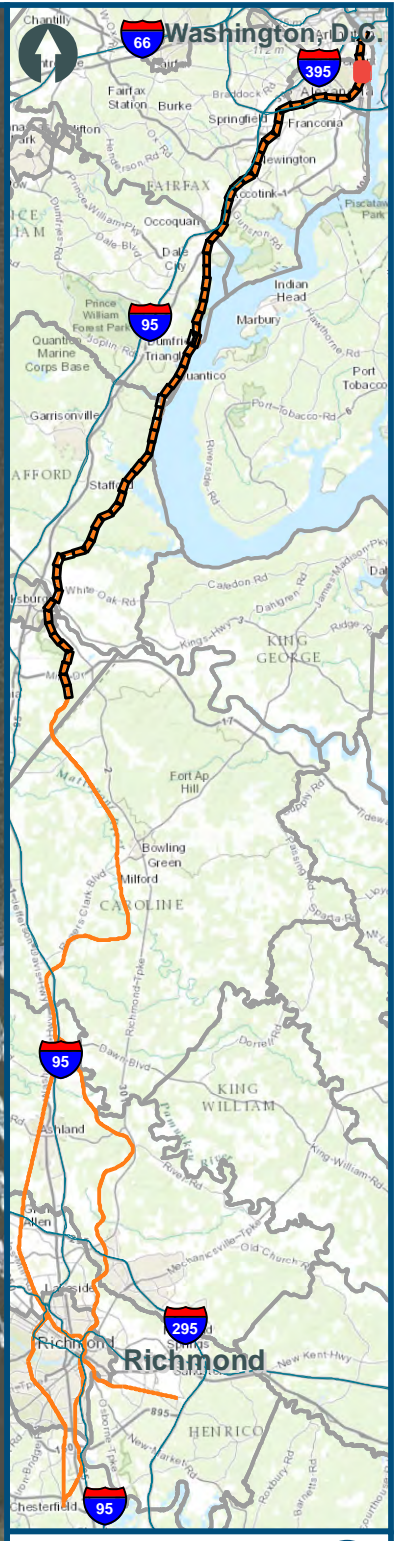
0 150 300  
Feet  
1 inch = 300 feet  
@ 11 x 17 inches  
Projection: Lambert Conformal Conic  
State Plane Virginia North FIPS 4501 Feet  
North American Datum of 1983  
Imagery: Bing Map Aerial

- Legend**
- CSXT Mileposts
  - Existing Track
  - New Track
  - CSXT Right-of-Way
  - Streams

**Figure L-3**  
**Northern Virginia**  
**2006 Report**  
**Alignment Option**



\\dlismain\GIS\_DATA\GIS\Projects\011545\_VA\DeptofRails-PublicTransportation\0239056\_RAPS-4\AIDev-Concept\Eng\map\_docs\mxd\Alt\_Tech\_Report\DC2RVA\_Ch6\_Appendices\_NOV\_2006\Report\_Alignments\_11x17.mxd | Last Updated: 11.04.2015



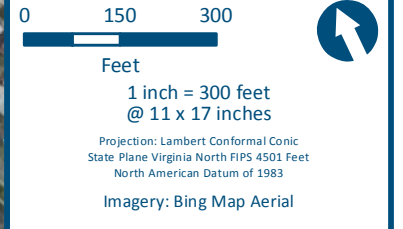
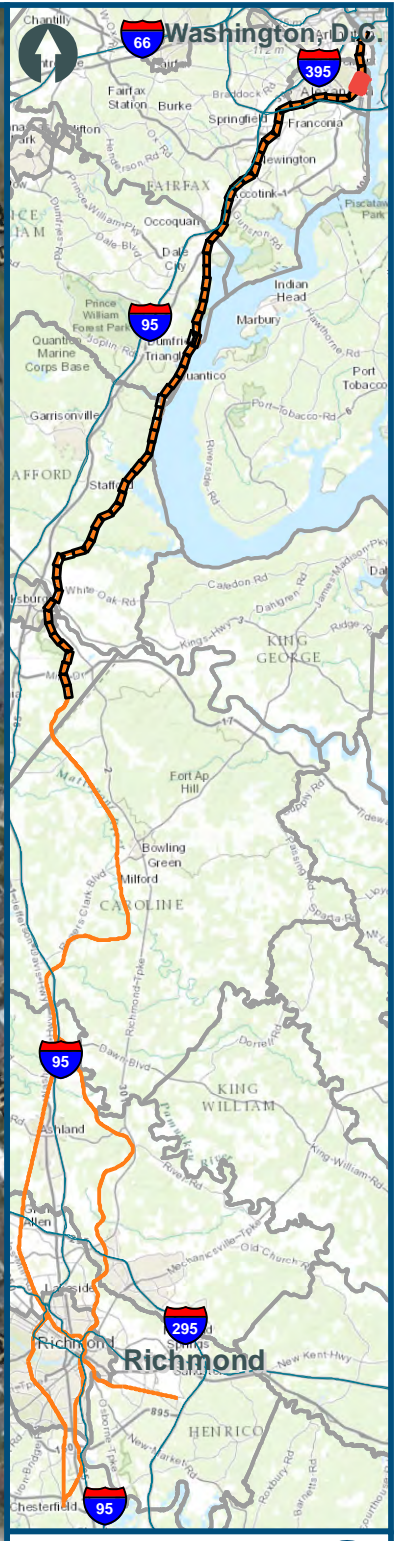
0 150 300  
Feet  
1 inch = 300 feet  
@ 11 x 17 inches  
Projection: Lambert Conformal Conic  
State Plane Virginia North FIPS 4501 Feet  
North American Datum of 1983  
Imagery: Bing Map Aerial


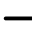



- Legend**
- CSXT Mileposts
  - Existing Track
  - New Track
  - CSXT Right-of-Way
  - Streams

**Figure L-4**  
**Northern Virginia**  
**2006 Report**  
**Alignment Option**



\\dlismain\GIS\_DATA\GIS\Projects\11545\_VA\DeptofRails-PublicTransportation\0239056\_RAPS-4\AllDev-Concept\Eng\map\_docs\mxd\Alt\_Tech\_Report\DC2RVA\_Chr6\_Appendices\_NOV\_2006\Report\_Alignments\_11x17.mxd | Last Updated: 11.04.2015

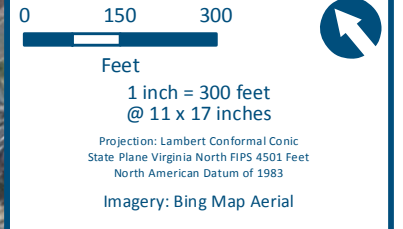









- Legend**
-  CSXT Mileposts
  -  Existing Track
  -  New Track
  -  CSXT Right-of-Way
  -  Streams

**Figure L-5**  
**Northern Virginia**  
**2006 Report**  
**Alignment Option**



\\dlmain\GIS\_DATA\GIS\Projects\011545\_VA\DeptofRails-PublicTransportation\0239056\_RAPS-4\AIDev-ConceptEng\map\_docs\mxd\Alt\_Tech\_Report\DC2RVA\_Ch6\_Appendices\_NOV\_2006\Report\_Alignments\_11x17.mxd | Last Updated: 11.04.2015

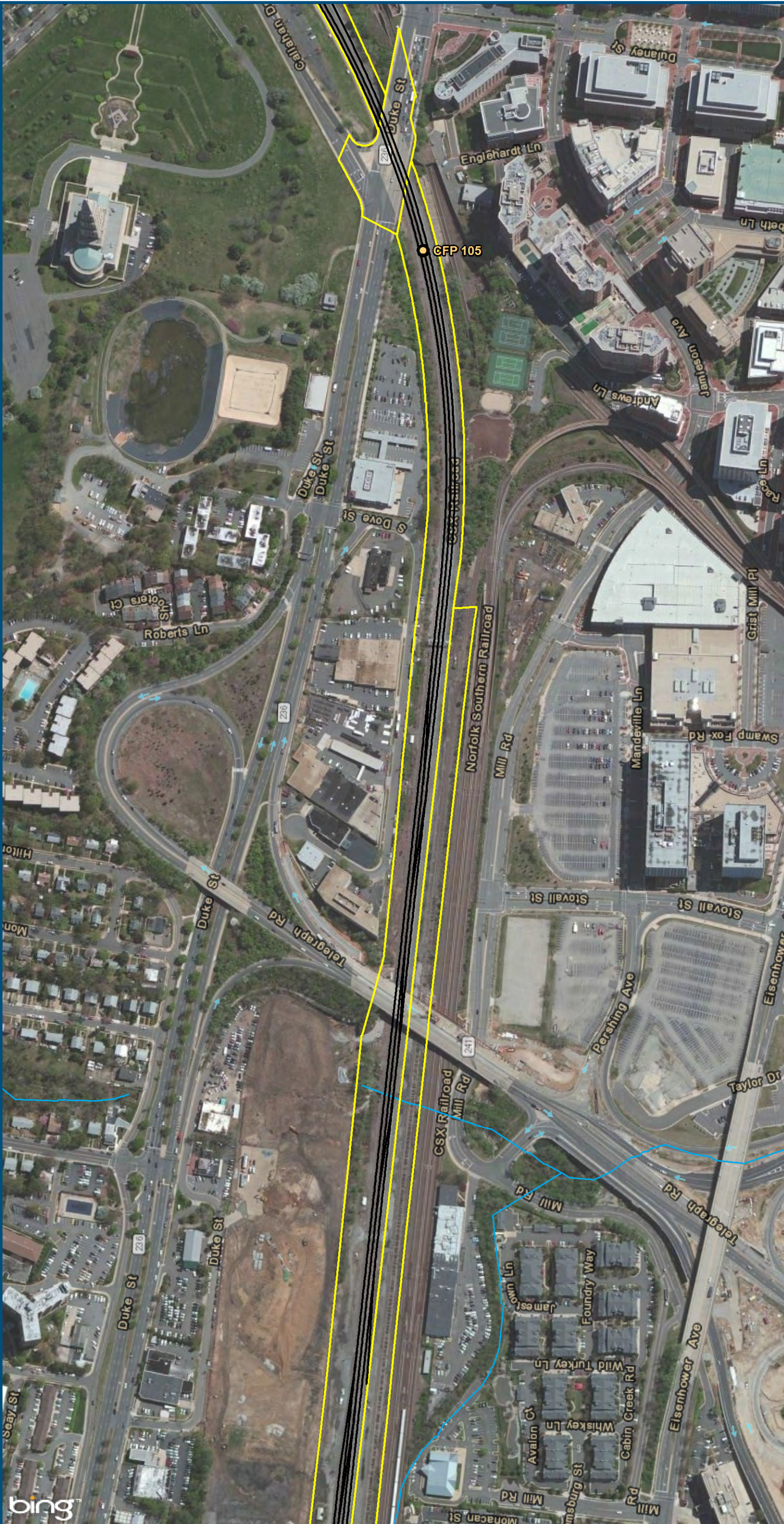


- Legend**
-  WMATA
  -  Amtrak/VRE Station
  -  CSXT Mileposts
  -  Existing Track
  -  New Track
  -  CSXT Right-of-Way
  -  Streams

**Figure L-6**  
**Northern Virginia**  
**2006 Report**  
**Alignment Option**



\\dlismain\GIS\_DATA\GIS\Projects\011545\_VA\DeptofRails-PublicTransportation\0239056\_RAPS-4\AIDev-ConceptEng\map\_docs\mxd\Alt\_Tech\_Report\DC2RVA\_Chr6\_Appendices\NOV\_2006\Report\_Alignments\_11x17.mxd | Last Updated: 11.04.2015

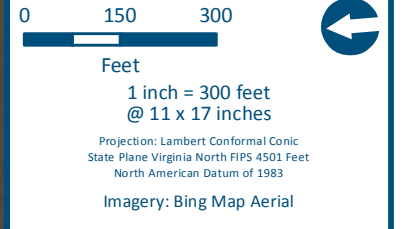


0 150 300  
Feet  
1 inch = 300 feet  
@ 11 x 17 inches  
Projection: Lambert Conformal Conic  
State Plane Virginia North FIPS 4501 Feet  
North American Datum of 1983  
Imagery: Bing Map Aerial

- Legend**
- CSXT Mileposts
  - Existing Track
  - New Track
  - ▭ CSXT Right-of-Way
  - Streams

**Figure L-7**  
**Northern Virginia**  
**2006 Report**  
**Alignment Option**



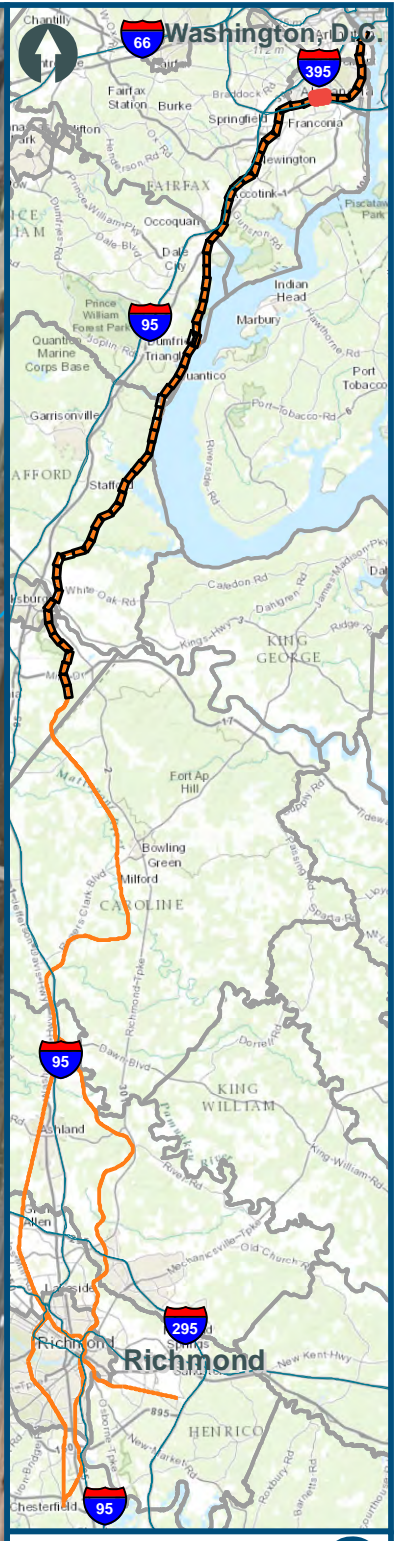


- Legend**
- CSXT Mileposts
  - Existing Track
  - New Track
  - CSXT Right-of-Way
  - Streams

**Figure L-8**  
**Northern Virginia**  
**2006 Report**  
**Alignment Option**



\\dlmain\GIS\_DATA\GIS\Projects\11545\_VA Dept of Rails-Public\Transportation\0239056\_RAPS-4\AIDev-Concept\Eng\map\_docs\mxd\Alt\_Tech\_Report\DC2RVA\_Ch6\_Appendices\_NOV\_2006\Report\_Alignments\_11x17.mxd | Last Updated: 11.04.2015



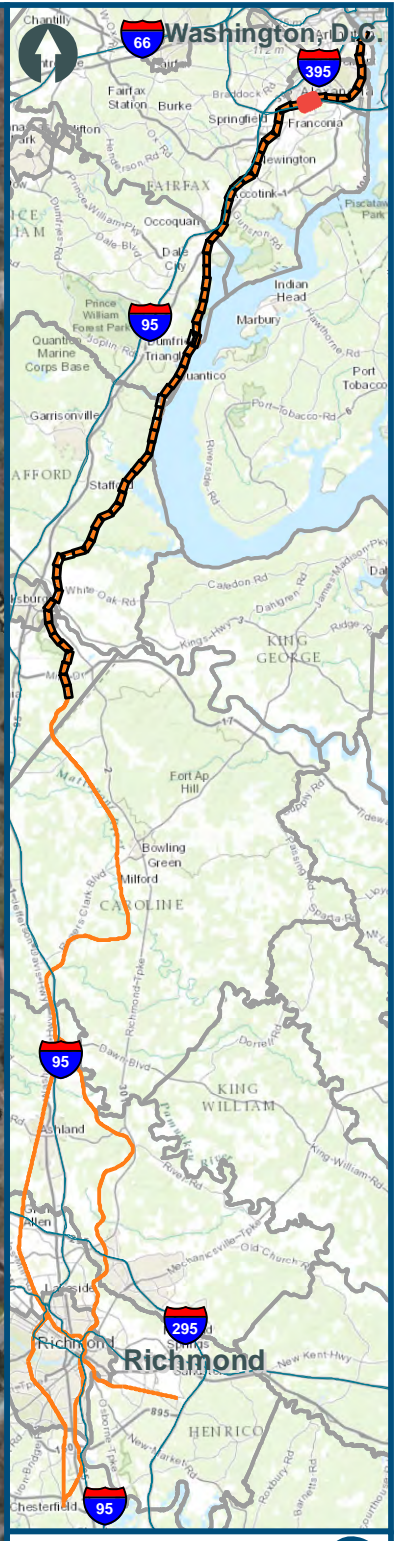
0 150 300  
Feet  
1 inch = 300 feet  
@ 11 x 17 inches  
Projection: Lambert Conformal Conic  
State Plane Virginia North FIPS 4501 Feet  
North American Datum of 1983  
Imagery: Bing Map Aerial

- Legend**
- CSXT Mileposts
  - Existing Track
  - New Track
  - CSXT Right-of-Way
  - Streams

**Figure L-9**  
**Northern Virginia**  
**2006 Report**  
**Alignment Option**



\\dlmain\GIS\_DATA\GIS\Projects\011545\_VA\DeptofRails-PublicTransportation\0239056\_RAPS-4\AIDev-ConceptEng\map\_docs\mxd\Ail\_Tech\_Report\DC2RVA\_Ch6\_Appendices\_NOV\_2006\Report\_Alignments\_11x17.mxd | Last Updated: 11.04.2015



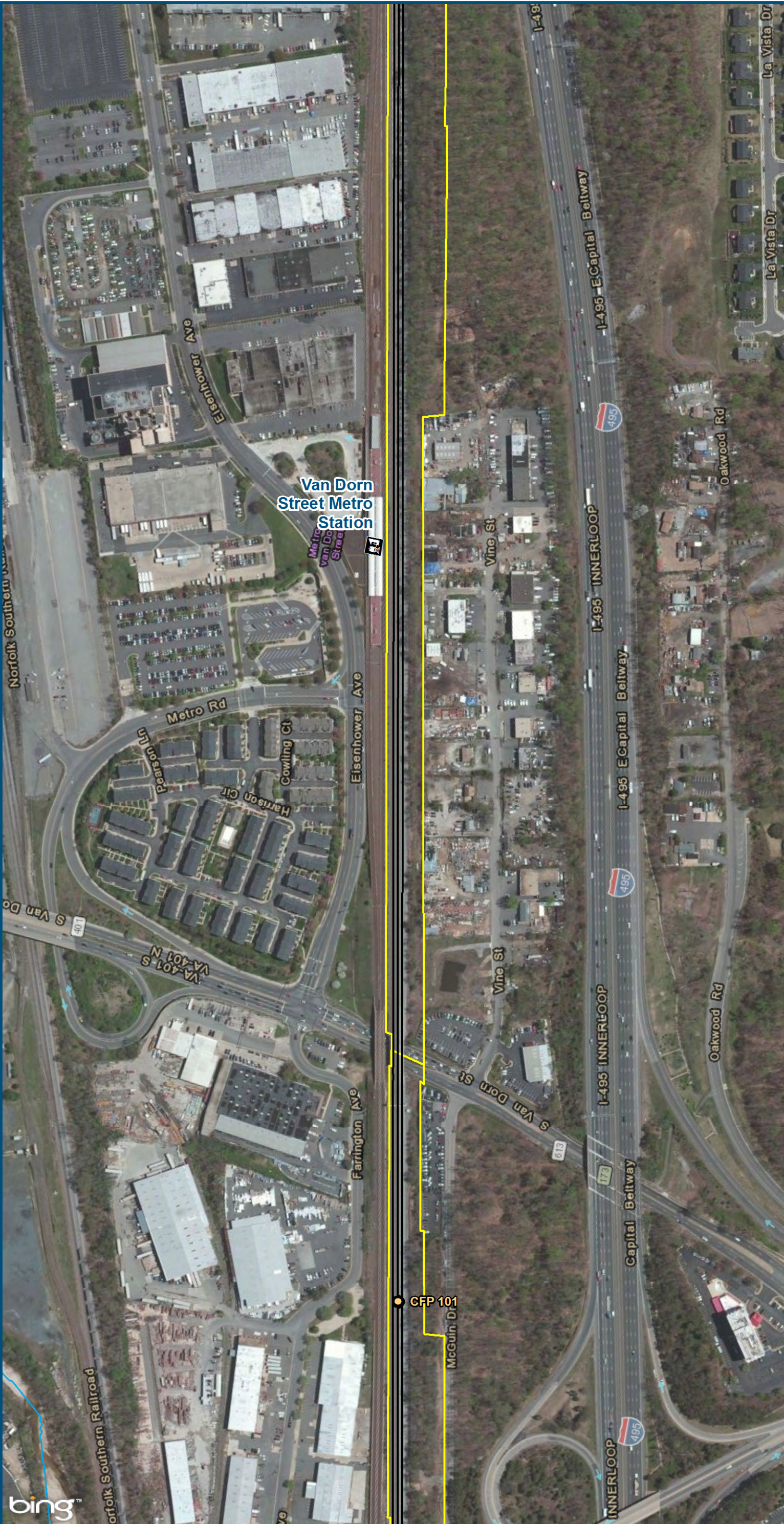
0 150 300  
Feet  
1 inch = 300 feet  
@ 11 x 17 inches  
Projection: Lambert Conformal Conic  
State Plane Virginia North FIPS 4501 Feet  
North American Datum of 1983  
Imagery: Bing Map Aerial

**Legend**

- CSXT Mileposts
- Existing Track
- New Track
- ▭ CSXT Right-of-Way
- Streams

Figure L-10  
Northern Virginia  
2006 Report  
Alignment Option





0 150 300  
 Feet  
 1 inch = 300 feet  
 @ 11 x 17 inches  
 Projection: Lambert Conformal Conic  
 State Plane Virginia North FIPS 4501 Feet  
 North American Datum of 1983  
 Imagery: Bing Map Aerial

- Legend**
- WMATA
  - CSXT Mileposts
  - Existing Track
  - New Track
  - CSXT Right-of-Way
  - Streams

**Figure L-11**  
**Northern Virginia**  
**2006 Report**  
**Alignment Option**



\\dlmain\GIS\_DATA\GIS\Projects\011545\_VA\DeptofRails-PublicTransportation\0239056\_RAPS-4\AIDev-Concept\Eng\map\_docs\mxd\Alt\_Tech\_Report\DC2RVA\_Ch6\_Appendices\_NOV\_2006\Report\_Alignments\_11x17.mxd | Last Updated: 11.04.2015



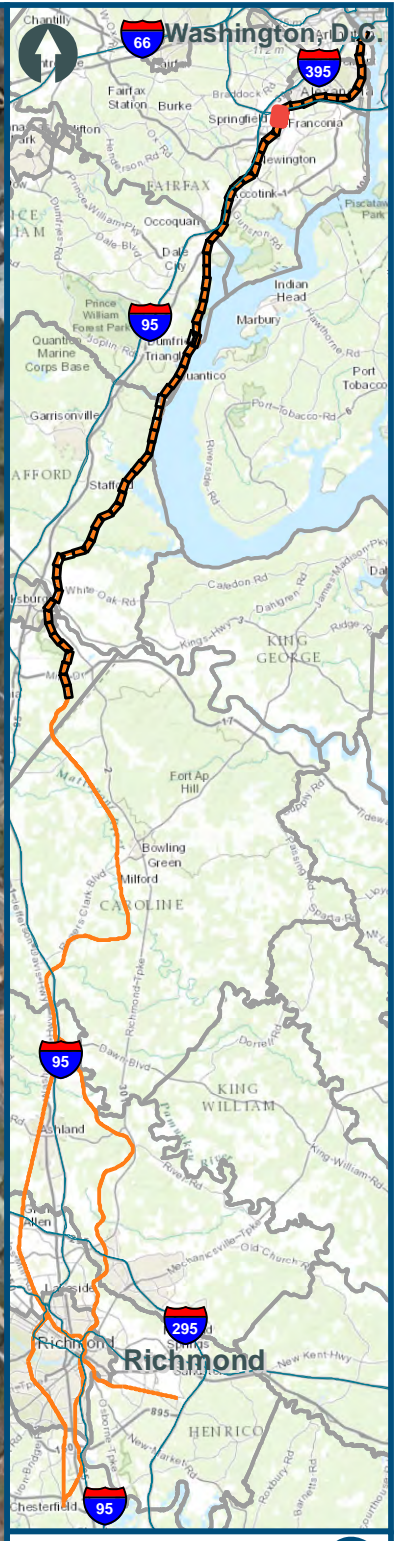
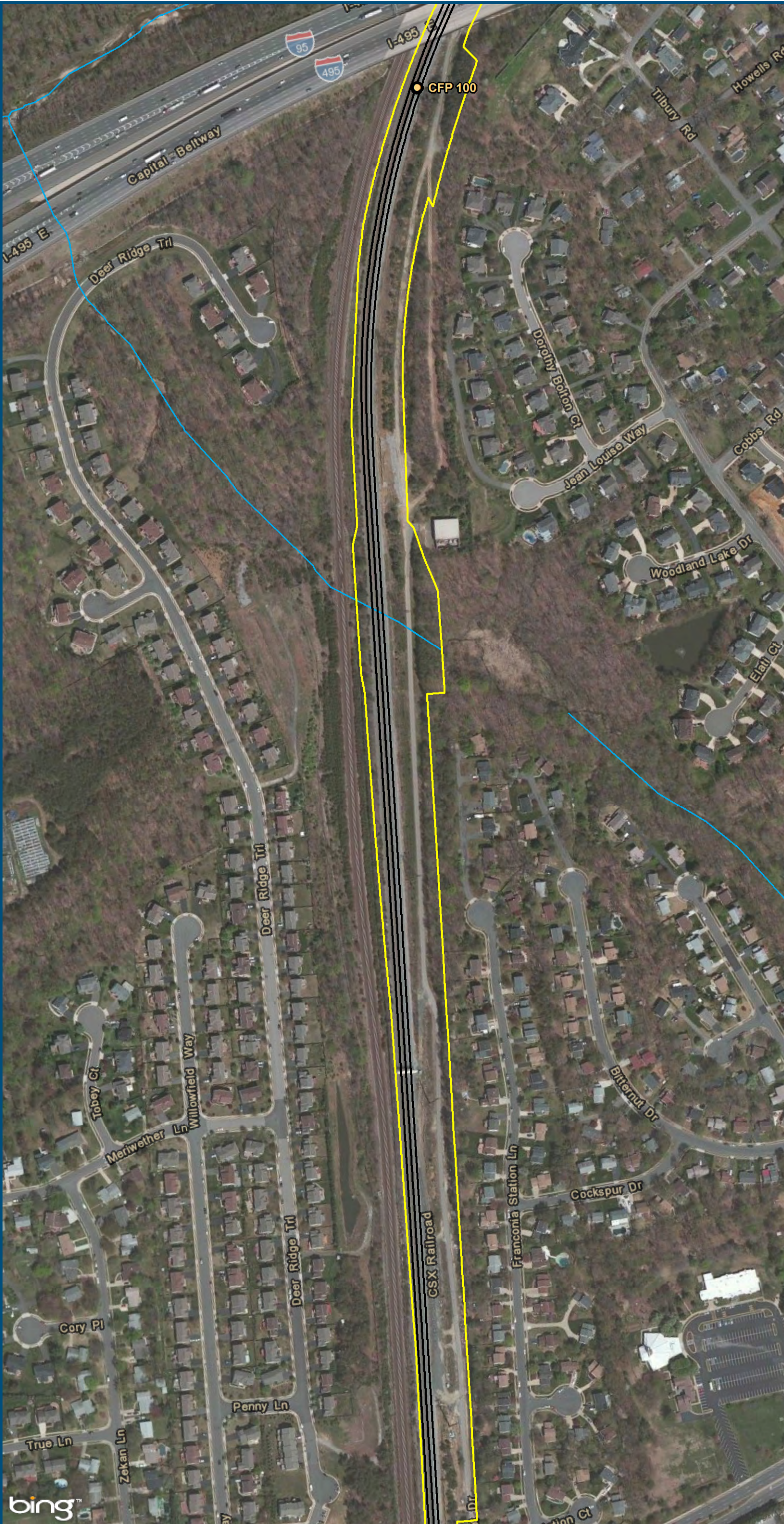
0 150 300  
Feet  
1 inch = 300 feet  
@ 11 x 17 inches  
Projection: Lambert Conformal Conic  
State Plane Virginia North FIPS 4501 Feet  
North American Datum of 1983  
Imagery: Bing Map Aerial

- Legend**
- CSXT Mileposts
  - Existing Track
  - New Track
  - ▭ CSXT Right-of-Way
  - Streams

**Figure L-12**  
**Northern Virginia**  
**2006 Report**  
**Alignment Option**



\\dlismain\GIS\_DATA\GIS\Projects\011545\_VA\DeptofRails-PublicTransportation\0239056\_RAPS-4AIDev-ConceptEngin\map\_docs\mxd\Alt\_Tech\_Report\DC2RVA\_Ch6\_Appendices\_NOV\_2006\Report\_Alignments\_11x17.mxd | Last Updated: 11.04.2015



0 150 300  
Feet  
1 inch = 300 feet  
@ 11 x 17 inches  
Projection: Lambert Conformal Conic  
State Plane Virginia North FIPS 4501 Feet  
North American Datum of 1983  
Imagery: Bing Map Aerial

- Legend**
- CSXT Mileposts
  - Existing Track
  - New Track
  - ▭ CSXT Right-of-Way
  - Streams

**Figure L-13**  
**Northern Virginia**  
**2006 Report**  
**Alignment Option**



\\dlismain\GIS\_DATA\GIS\Projects\011545\_VA\DeptofRails-PublicTransportation\02390566\_RAPS-4\AIDev-Concept\Eng\map\_docs\mxd\Alt\_Tech\_Report\DC2RVA\_Ch6\_Appendices\_NOV\_2006\Report\_Alignments\_11x17.mxd | Last Updated: 11.04.2015



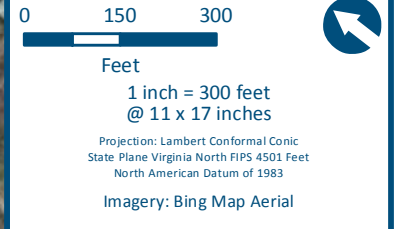
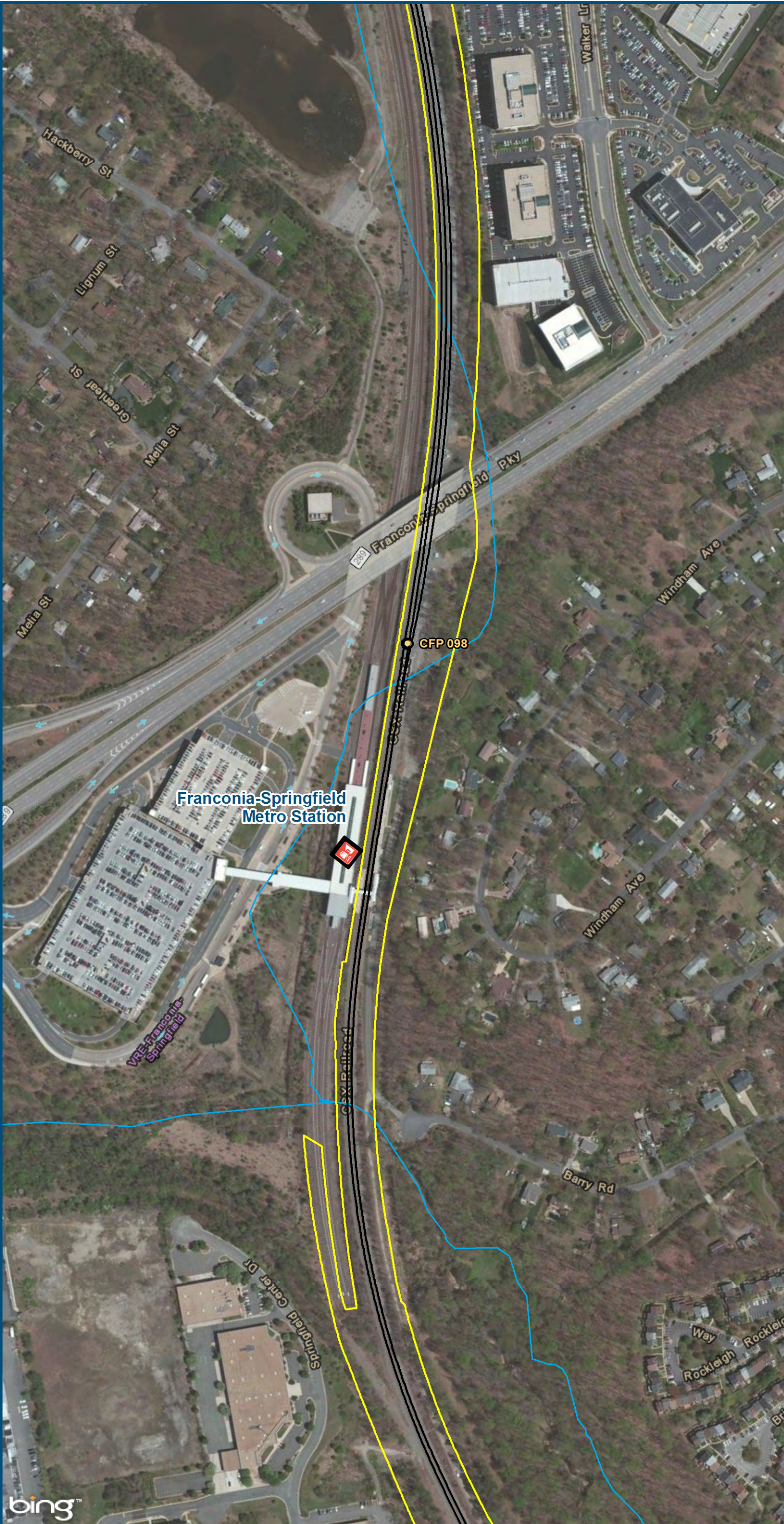
0 150 300  
Feet  
1 inch = 300 feet  
@ 11 x 17 inches  
Projection: Lambert Conformal Conic  
State Plane Virginia North FIPS 4501 Feet  
North American Datum of 1983  
Imagery: Bing Map Aerial







- Legend**
- CSXT Mileposts
  - Existing Track
  - New Track
  - CSXT Right-of-Way
  - Streams

**Figure L-14**  
**Northern Virginia**  
**2006 Report**  
**Alignment Option**



\\dlismain\GIS\_DATA\GIS\Projects\011545\_VA\DeptofRails-PublicTransportation\0239056\_RAPS-4\AIDev-Concept\Eng\map\_docs\mxd\Alt\_Tech\_Report\DC2RVA\_Chr6\_Appendices\_NOV\_2006\Report\_Alignments\_11x17.mxd | Last Updated: 11.04.2015



- Legend**
-  VRE/WMATA Station
  -  CSXT Mileposts
  -  Existing Track
  -  New Track
  -  CSXT Right-of-Way
  -  Streams

**Figure L-15**  
**Northern Virginia**  
**2006 Report**  
**Alignment Option**



\\dlismain\GIS\_DATA\GIS\Projects\011545\_VA\DeptofRails-PublicTransportation\0239056\_RAPS-4\AIDev-ConceptEng\map\_docs\mxd\Alt\_Tech\_Report\DC2RVA\_Cht6\_Appendices\_NOV\_2006\Report\_Alignments\_11x17.mxd | Last Updated: 11.04.2015



0 150 300  
Feet  
1 inch = 300 feet  
@ 11 x 17 inches  
Projection: Lambert Conformal Conic  
State Plane Virginia North FIPS 4501 Feet  
North American Datum of 1983  
Imagery: Bing Map Aerial

- Legend**
- CSXT Mileposts
  - Existing Track
  - New Track
  - CSXT Right-of-Way
  - Streams

**Figure L-16**  
**Northern Virginia**  
**2006 Report**  
**Alignment Option**





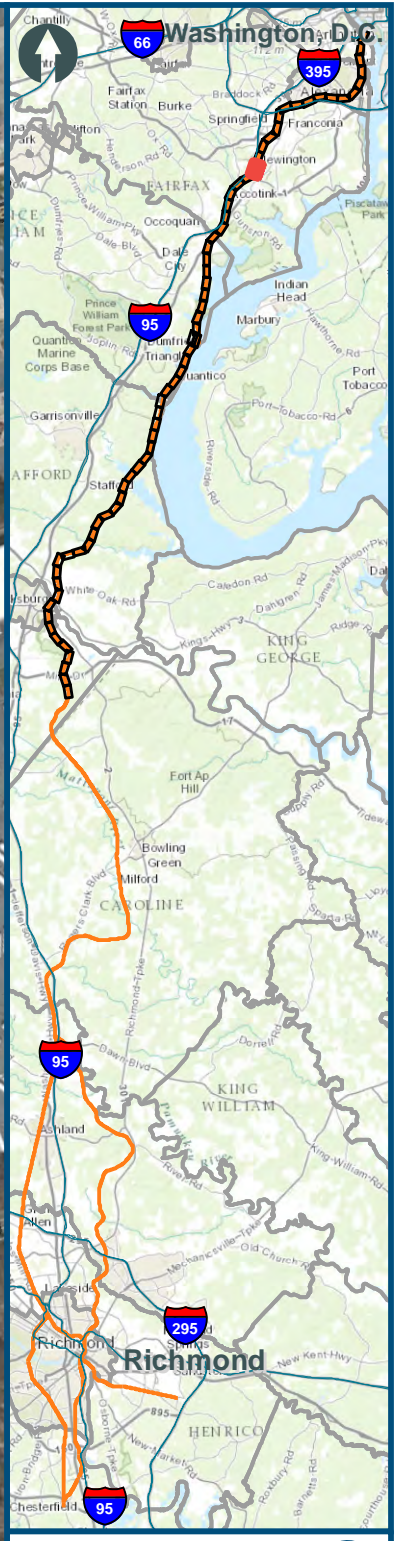
0 150 300  
Feet  
1 inch = 300 feet  
@ 11 x 17 inches  
Projection: Lambert Conformal Conic  
State Plane Virginia North FIPS 4501 Feet  
North American Datum of 1983  
Imagery: Bing Map Aerial

- Legend**
- CSXT Mileposts
  - Existing Track
  - New Track
  - CSXT Right-of-Way
  - Streams

**Figure L-17**  
**Northern Virginia**  
**2006 Report**  
**Alignment Option**



\\dlmain\GIS\_DATA\GIS\Projects\11545\_VA\DeptofRails-PublicTransportation\0239056\_RAPS-4\AIDev-Concept\Eng\map\_docs\mxd\Alt\_Tech\_Report\DC2RVA\_Ch6\_Appendices\_NOV\_2006\Report\_Alignments\_11x17.mxd | Last Updated: 11.04.2015



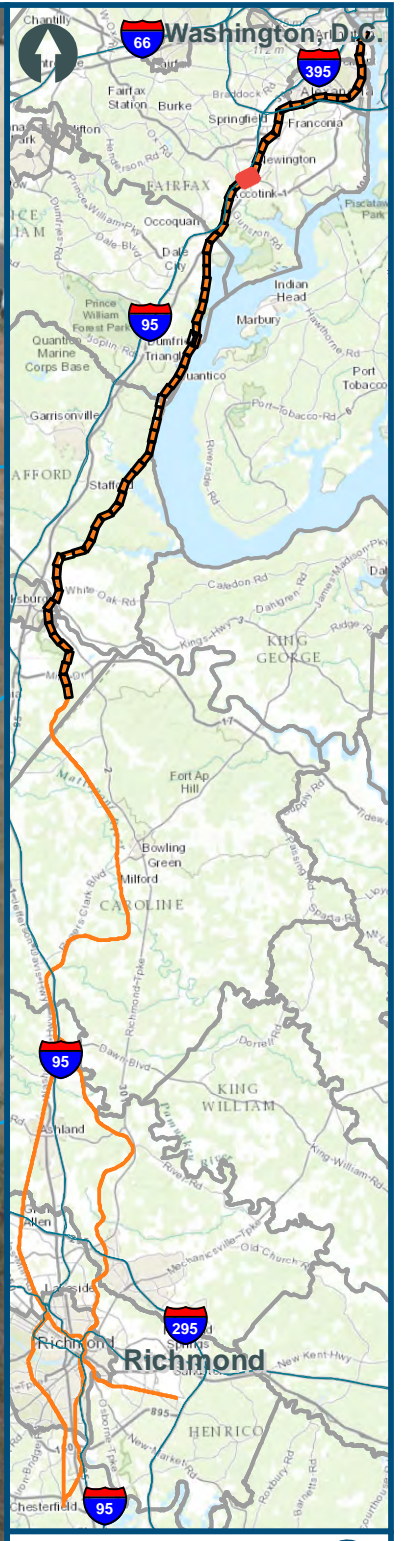
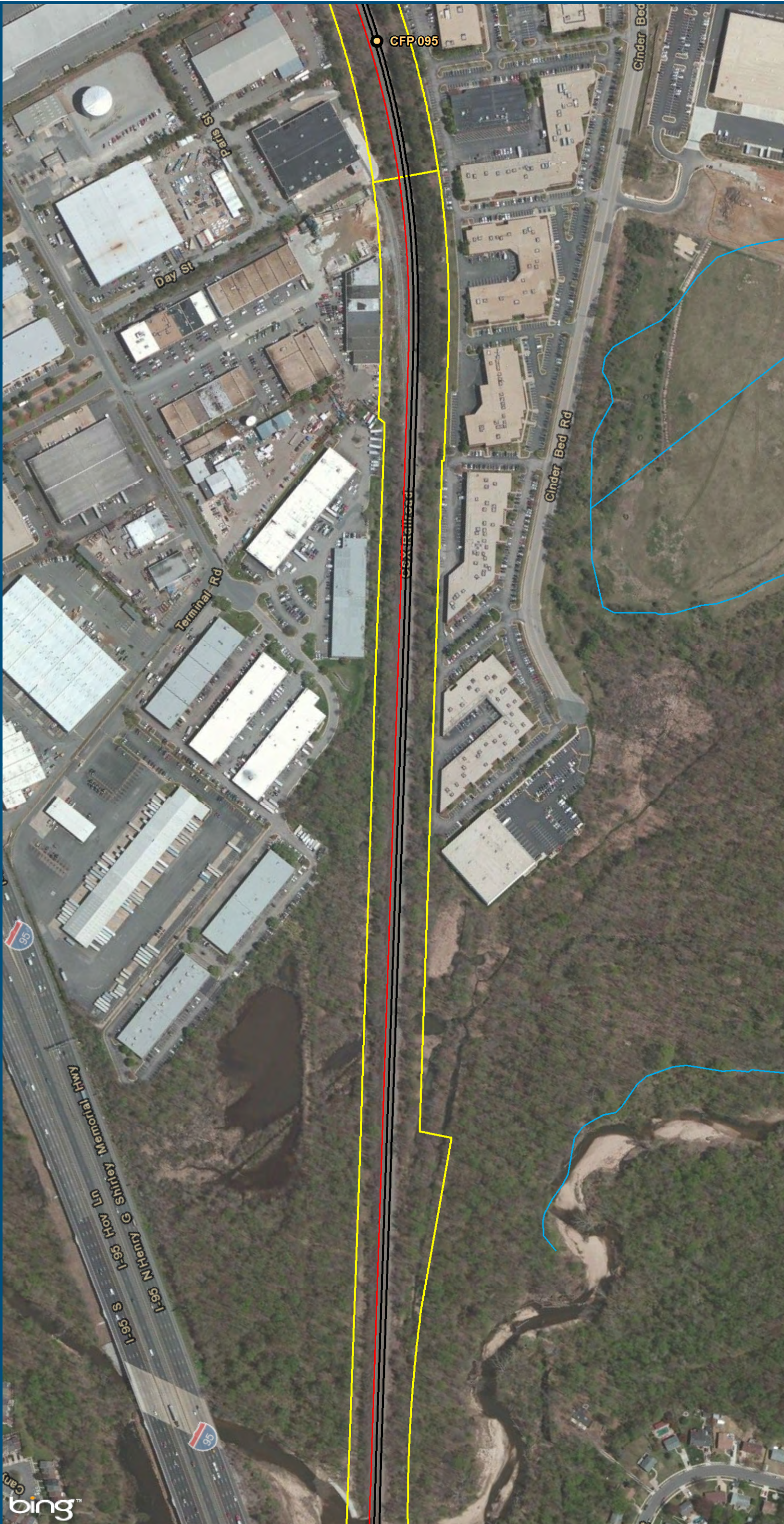
0 150 300  
Feet  
1 inch = 300 feet  
@ 11 x 17 inches  
Projection: Lambert Conformal Conic  
State Plane Virginia North FIPS 4501 Feet  
North American Datum of 1983  
Imagery: Bing Map Aerial

- Legend**
- CSXT Mileposts
  - Existing Track
  - New Track
  - CSXT Right-of-Way
  - Streams

**Figure L-18**  
**Northern Virginia**  
**2006 Report**  
**Alignment Option**



\\dlismain\GIS\_DATA\GIS\Projects\011545\_VA\DeptofRails-PublicTransportation\0239056\_RAPS-4\AIDev-ConceptEng\map\_docs\mxd\Alt\_Tech\_Report\DC2RVA\_Chr6\_Appendices\_NOV\_2006\Report\_Alignments\_11x17.mxd | Last Updated: 11.04.2015



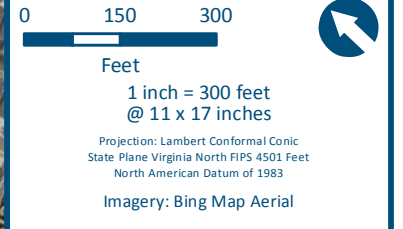
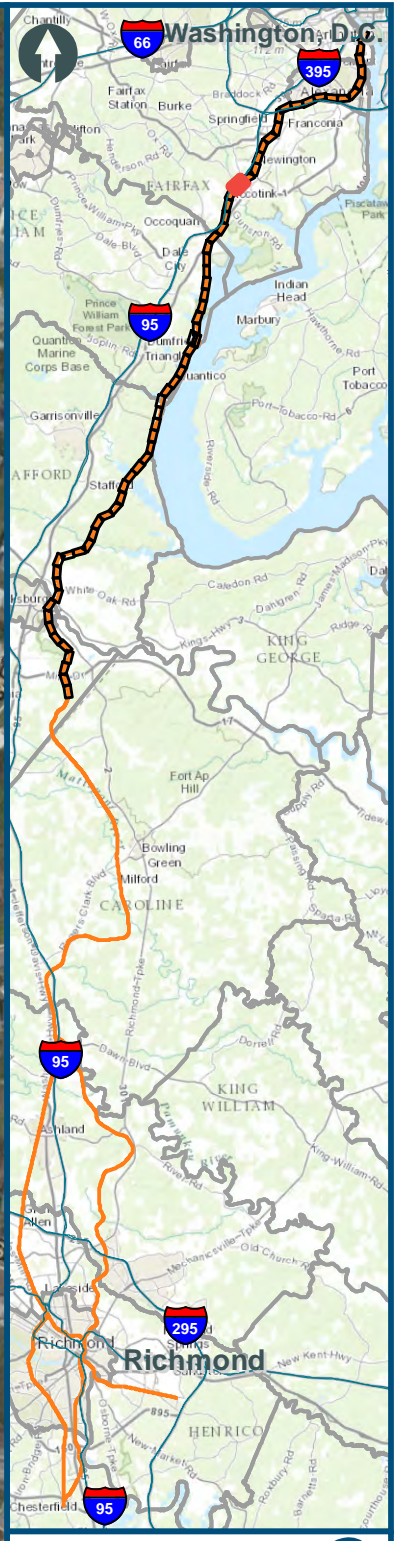
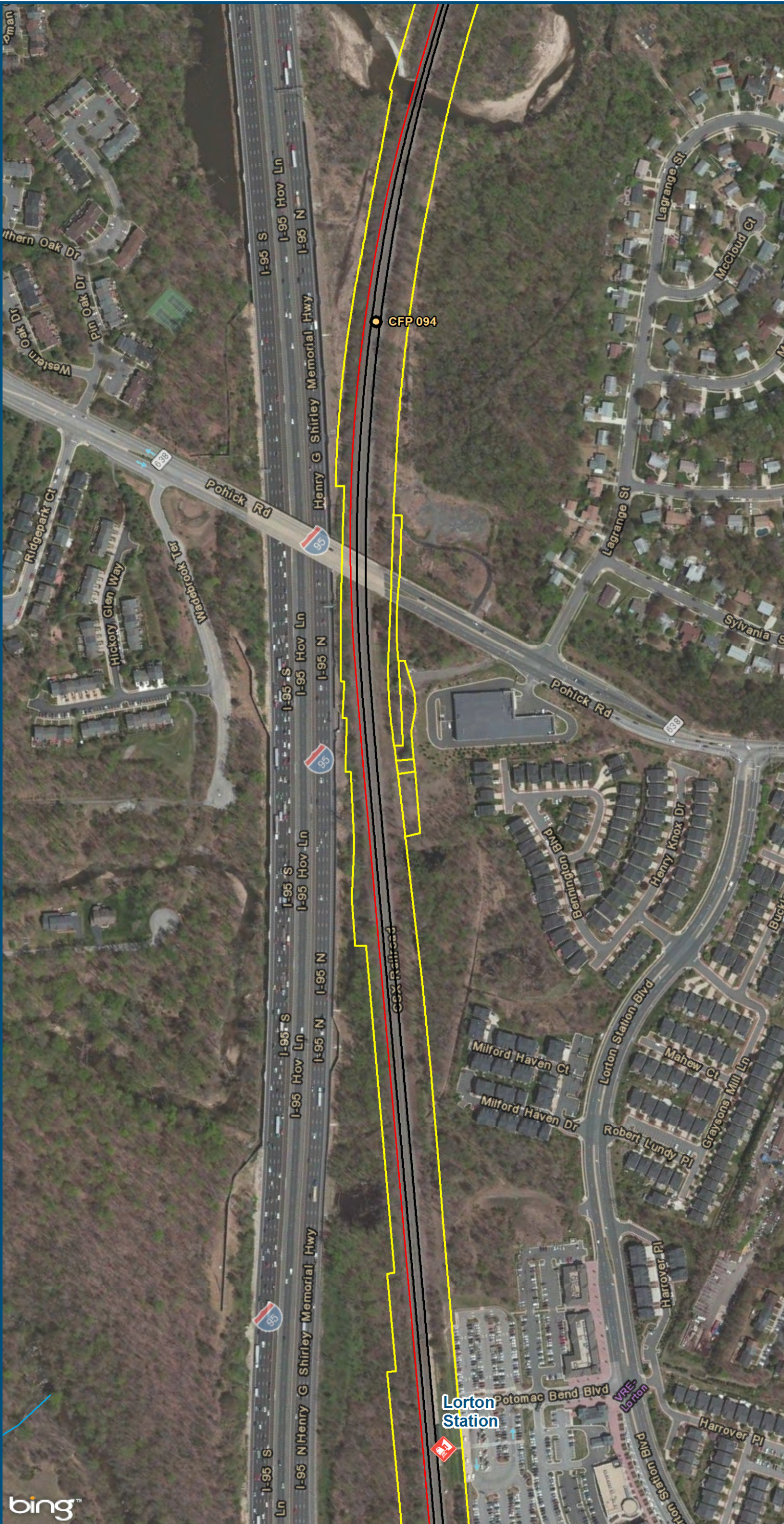
0 150 300  
Feet  
1 inch = 300 feet  
@ 11 x 17 inches  
Projection: Lambert Conformal Conic  
State Plane Virginia North FIPS 4501 Feet  
North American Datum of 1983  
Imagery: Bing Map Aerial

- Legend**
- CSXT Mileposts
  - Existing Track
  - New Track
  - CSXT Right-of-Way
  - Streams

**Figure L-19**  
**Northern Virginia**  
**2006 Report**  
**Alignment Option**



\\dlismain\GIS\_DATA\GIS\Projects\011545\_VA\DeptofRails-PublicTransportation\0239056\_RAPS-4\AIDev-ConceptEng\map\_docs\mxd\Alt\_Tech\_Report\DC2RVA\_Cht6\_Appendices\_NOV\_2006\Report\_Alignments\_11x17.mxd | Last Updated: 11.04.2015

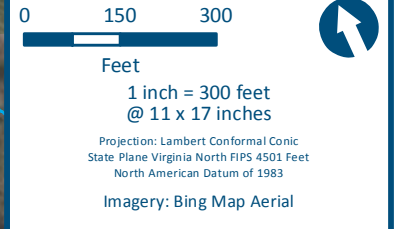


- Legend**
- VRE Station
  - CSXT Mileposts
  - Existing Track
  - New Track
  - CSXT Right-of-Way
  - Streams

**Figure L-20**  
**Northern Virginia**  
**2006 Report**  
**Alignment Option**



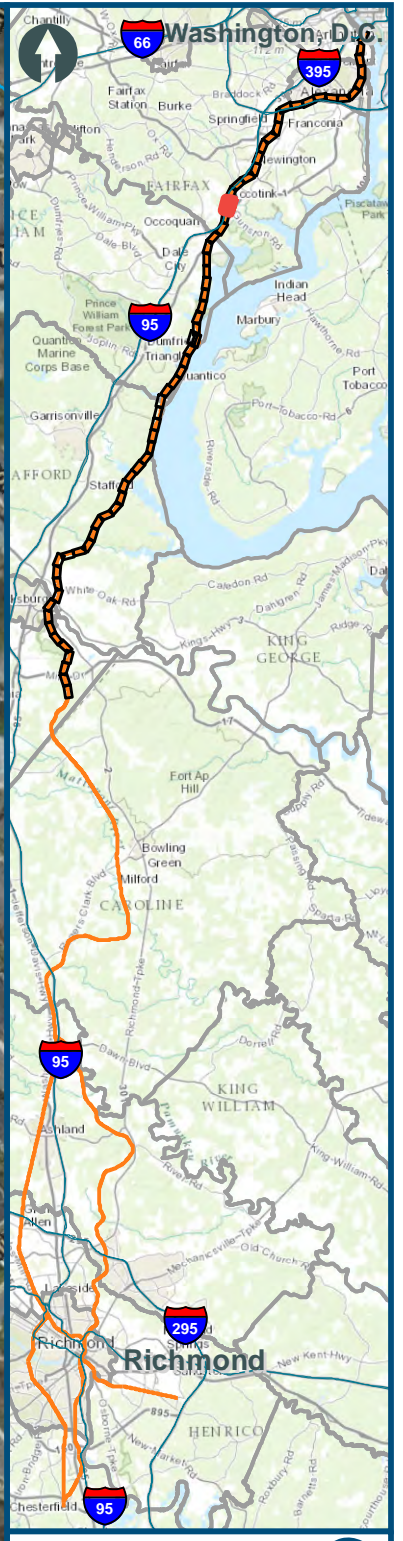
\\dlmain\GIS\Projects\11545\_VA\DeptofRails-PublicTransportation\0239056\_RAPS-4\MapDev-Concept\Eng\map\_docs\mxd\Alt\_Tech\_Report\DC2RVA\_Ch6\_Appendices\_NOV\_2006\Report\_Alignments\_11x17.mxd | Last Updated: 11.04.2015



- Legend**
- Amtrak Station
  - VRE Station
  - CSXT Mileposts
  - Existing Track
  - New Track
  - CSXT Right-of-Way
  - Streams

**Figure L-21  
Northern Virginia  
2006 Report  
Alignment Option**





0 150 300  
Feet  
1 inch = 300 feet  
@ 11 x 17 inches  
Projection: Lambert Conformal Conic  
State Plane Virginia North FIPS 4501 Feet  
North American Datum of 1983  
Imagery: Bing Map Aerial

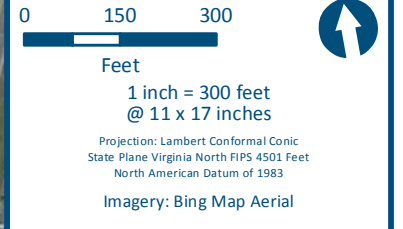
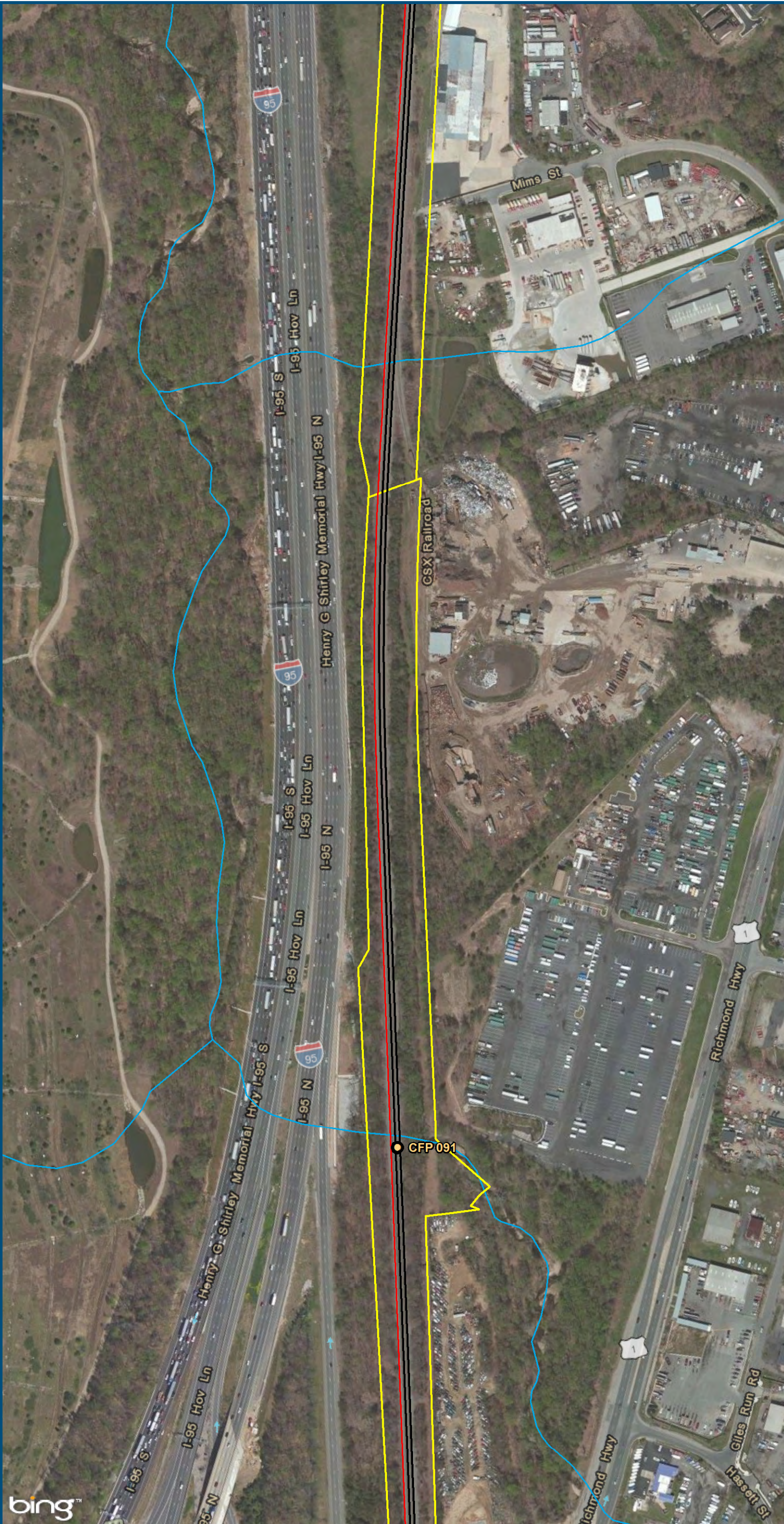
**Legend**

- CSXT Mileposts
- Existing Track
- New Track
- ▭ CSXT Right-of-Way
- Streams

**Figure L-22**  
**Northern Virginia**  
**2006 Report**  
**Alignment Option**



\\dlismain\GIS\_DATA\GIS\Projects\011545\_VA\DeptofRails-PublicTransportation\0239056\_RAPS-4\AIDev-ConceptEng\map\_docs\mxd\Ail\_Tech\_Report\DC2RVA\_Chr6\_Appendices\_NOV\_2006\Report\_Alignments\_11x17.mxd | Last Updated: 11.04.2015



- Legend**
- CSXT Mileposts
  - Existing Track
  - New Track
  - CSXT Right-of-Way
  - Streams

**Figure L-23**  
**Northern Virginia**  
**2006 Report**  
**Alignment Option**





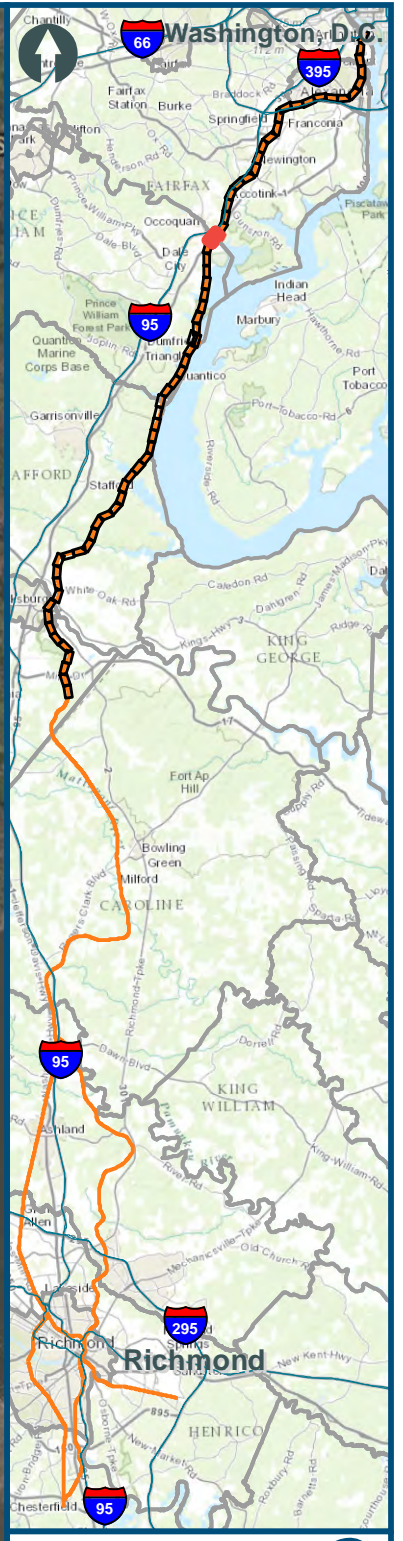
0 150 300  
Feet  
1 inch = 300 feet  
@ 11 x 17 inches  
Projection: Lambert Conformal Conic  
State Plane Virginia North FIPS 4501 Feet  
North American Datum of 1983  
Imagery: Bing Map Aerial

- Legend**
- CSXT Mileposts
  - Existing Track
  - New Track
  - CSXT Right-of-Way
  - Streams

**Figure L-24**  
**Northern Virginia**  
**2006 Report**  
**Alignment Option**



\\dlismain\GIS\_DATA\GIS\Projects\011545\_VA Dept of Rails-Public Transportation\0239056\_RAPS-4\AIDev-Concept\Eng\map\_docs\mxd\Ail\_Tech\_Report\DC2RVA\_Ch6\_Appendices\_NOV\_2006\Report\_Alignments\_11x17.mxd | Last Updated: 11.04.2015



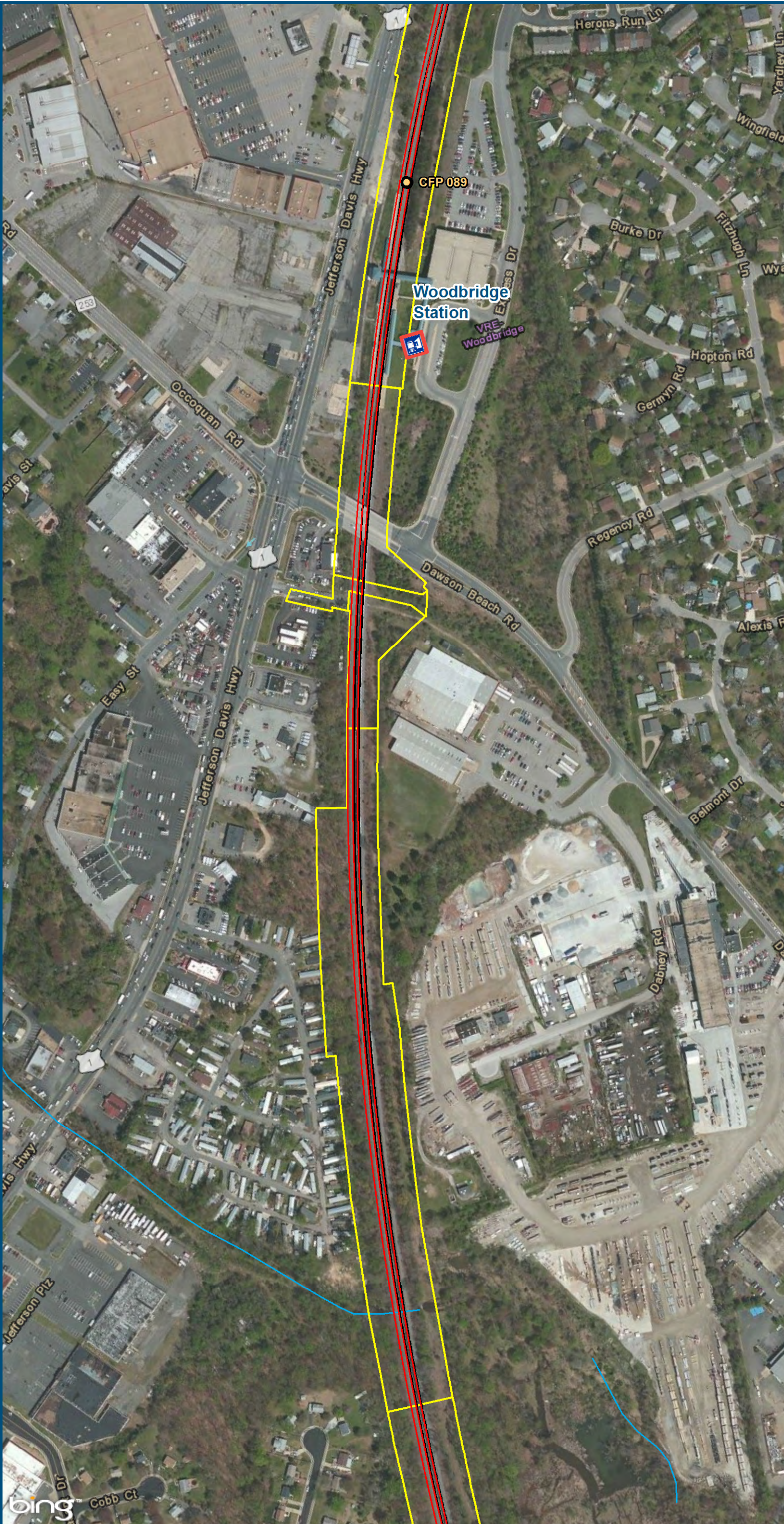
0 150 300  
Feet  
1 inch = 300 feet  
@ 11 x 17 inches  
Projection: Lambert Conformal Conic  
State Plane Virginia North FIPS 4501 Feet  
North American Datum of 1983  
Imagery: Bing Map Aerial

- Legend**
- CSXT Mileposts
  - Existing Track
  - New Track
  - CSXT Right-of-Way
  - Streams

**Figure L-25**  
**Northern Virginia**  
**2006 Report**  
**Alignment Option**



\\dlmain\GIS\_DATA\GIS\Projects\011545\_VA\DeptofRails-PublicTransportation\0239056\_RAPS-4\AIDev-Concept\Eng\map\_docs\mxd\Airt\_Tech\_Report\DC2RVA\_Ch6\_Appendices\_NOV\_2006\Report\_Alignments\_11x17.mxd | Last Updated: 11.04.2015



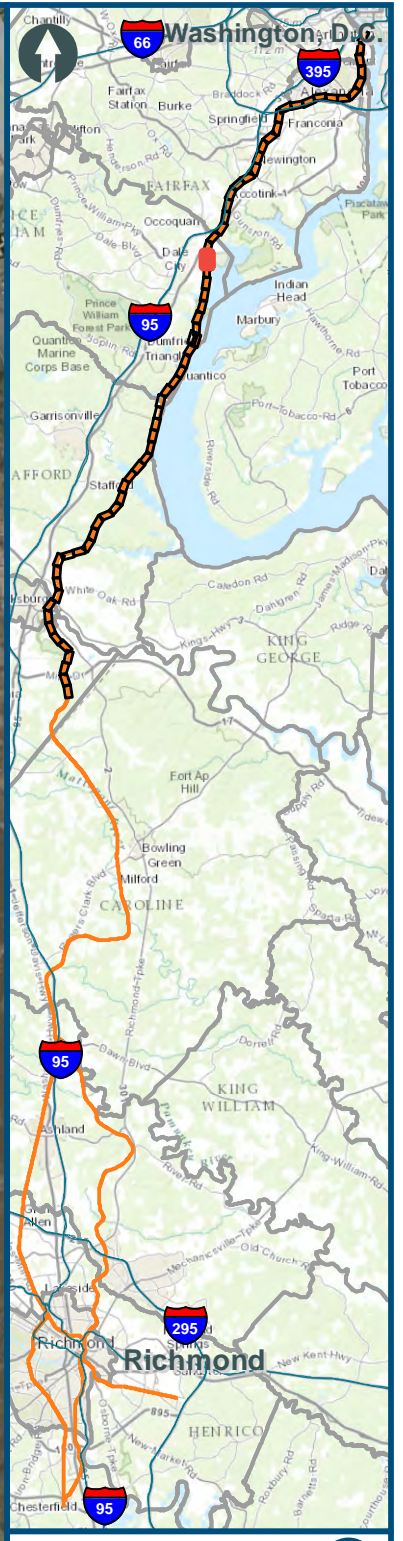
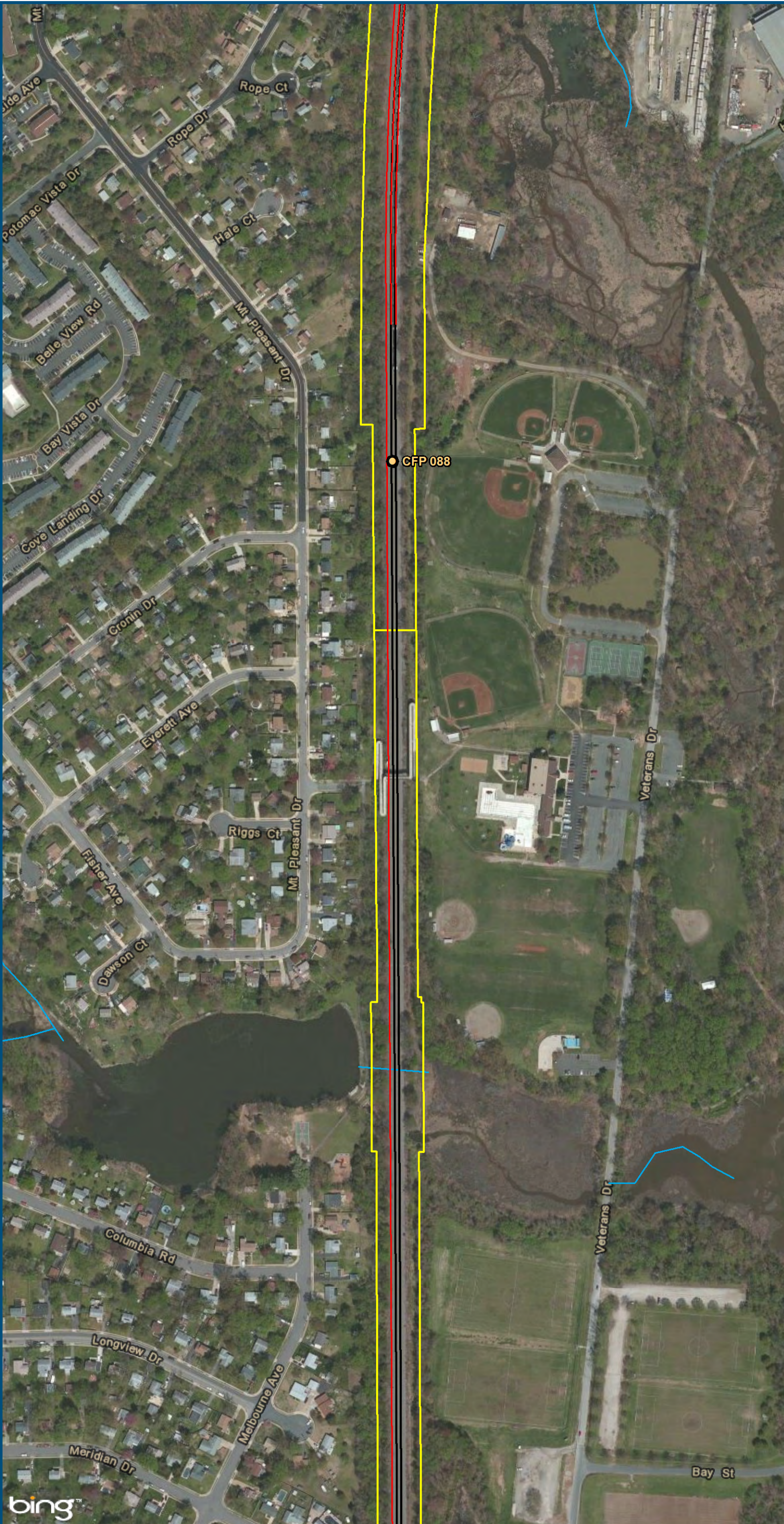
0 150 300  
Feet  
1 inch = 300 feet  
@ 11 x 17 inches  
Projection: Lambert Conformal Conic  
State Plane Virginia North FIPS 4501 Feet  
North American Datum of 1983  
Imagery: Bing Map Aerial

- Legend**
- Amtrak/VRE Station
  - CSXT Mileposts
  - Existing Track
  - New Track
  - CSXT Right-of-Way
  - Streams

**Figure L-26**  
**Northern Virginia**  
**2006 Report**  
**Alignment Option**



\\dlmain\GIS\_DATA\GIS\Projects\11545\_VA\DeptofRails-PublicTransportation\0239056\_RAPS-4\AIDev-Concept\Eng\map\_docs\mxd\Alt\_Tech\_Report\DC2RVA\_Ch6\_Appendices\_NOV\_2006\Report\_Alignments\_11x17.mxd | Last Updated: 11.04.2015



0 150 300  
Feet  
1 inch = 300 feet  
@ 11 x 17 inches  
Projection: Lambert Conformal Conic  
State Plane Virginia North FIPS 4501 Feet  
North American Datum of 1983  
Imagery: Bing Map Aerial

- Legend**
- CSXT Mileposts
  - Existing Track
  - New Track
  - CSXT Right-of-Way
  - Streams

**Figure L-27**  
**Northern Virginia**  
**2006 Report**  
**Alignment Option**



\\dlismain\GIS\_DATA\GIS\Projects\011545\_VA\DeptofRails-PublicTransportation\0239056\_RAPS-4\AllDev-Concept\Eng\map\_docs\mxd\Alt\_Tech\_Report\DC2RVA\_Ch6\_Appendices\_NOV\_2006\Report\_Alignments\_11x17.mxd | Last Updated: 11.04.2015



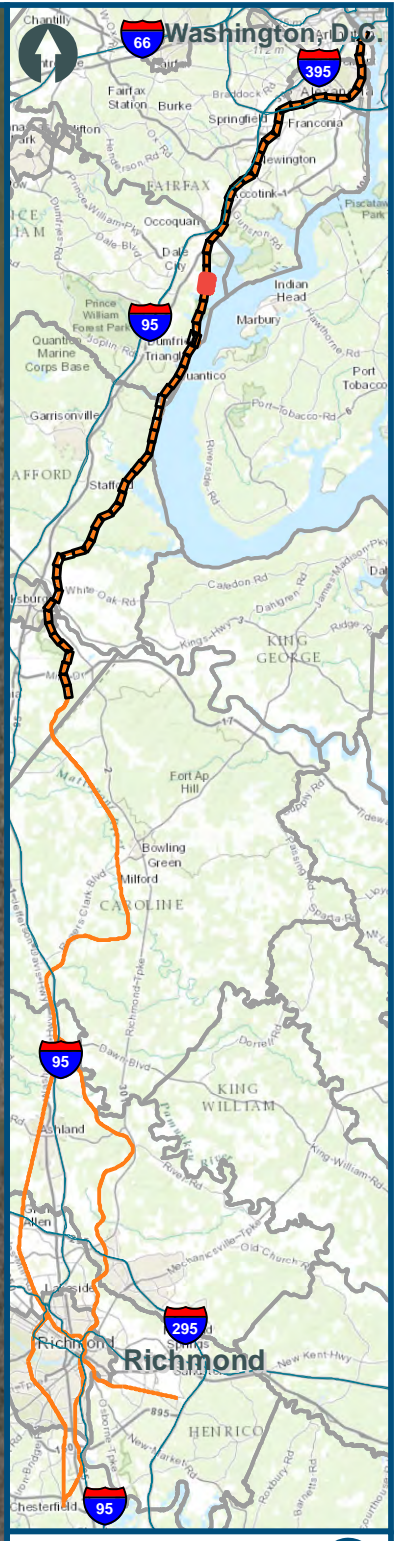
0 150 300  
Feet  
1 inch = 300 feet  
@ 11 x 17 inches  
Projection: Lambert Conformal Conic  
State Plane Virginia North FIPS 4501 Feet  
North American Datum of 1983  
Imagery: Bing Map Aerial

- Legend**
- CSXT Mileposts
  - Existing Track
  - New Track
  - CSXT Right-of-Way
  - Streams

**Figure L-28**  
**Northern Virginia**  
**2006 Report**  
**Alignment Option**



\\dlmain\GIS\_DATA\GIS\Projects\011545\_VA Dept of Rails-Public\Transportation\0239056\_RAPS-4\AIDev-Concept\Eng\map\_docs\mxd\Alt\_Tech\_Report\DC2RVA\_Chr6\_Appendices\_NOV\_2006\Report\_Alignments\_11x17.mxd | Last Updated: 11.04.2015



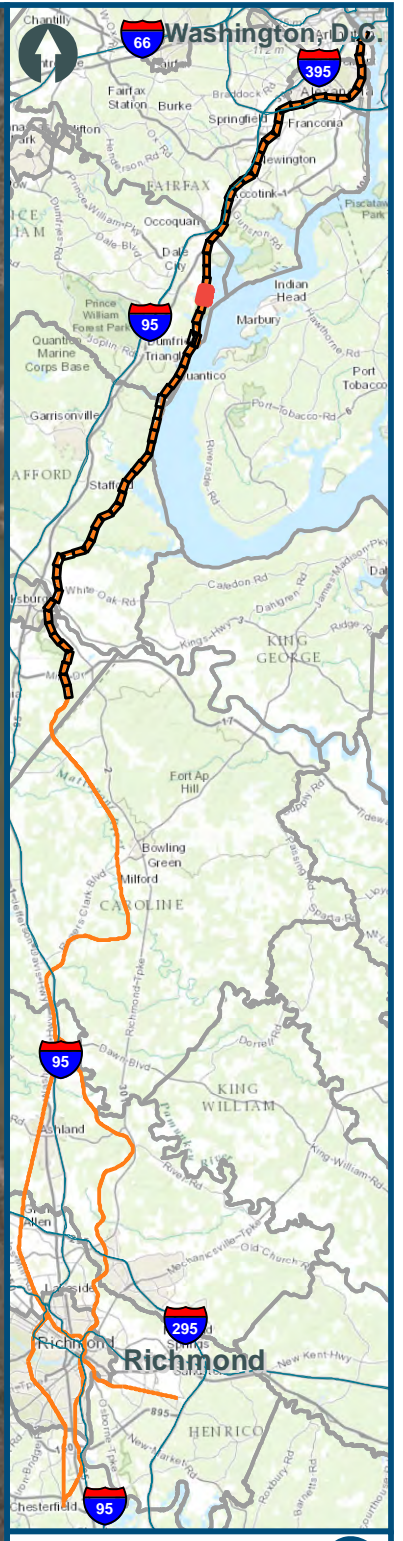
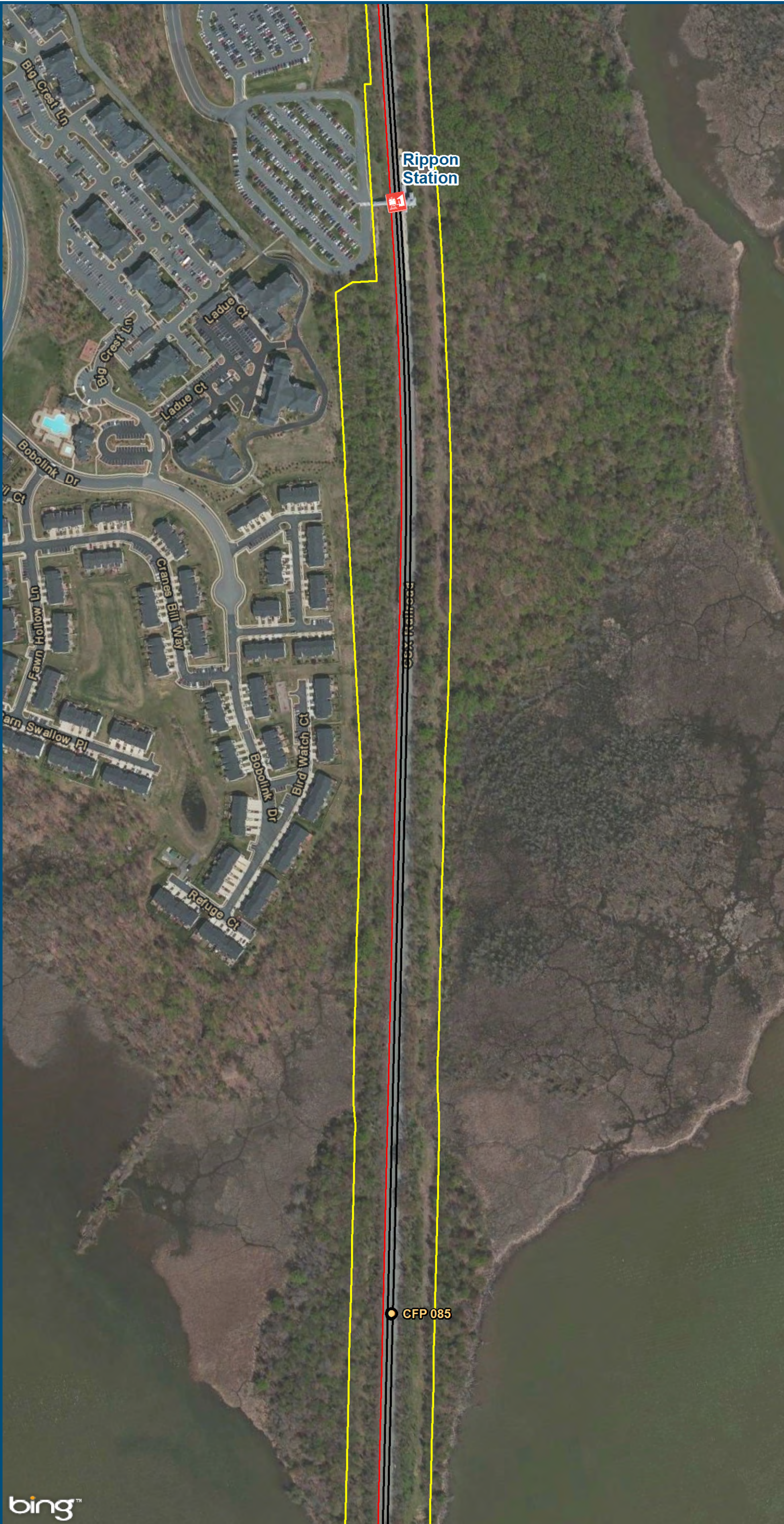
0 150 300  
Feet  
1 inch = 300 feet  
@ 11 x 17 inches  
Projection: Lambert Conformal Conic  
State Plane Virginia North FIPS 4501 Feet  
North American Datum of 1983  
Imagery: Bing Map Aerial

- Legend**
- CSXT Mileposts
  - Existing Track
  - New Track
  - CSXT Right-of-Way
  - Streams







**Figure L-29**  
**Northern Virginia**  
**2006 Report**  
**Alignment Option**



\\dlismain\GIS\_DATA\GIS\Projects\011545\_VA\DeptofRails-PublicTransportation\0239056\_RAPS-4\AIDev-ConceptEng\map\_docs\mxd\Alt\_Tech\_Report\DC2RVA\_Cht6\_Appendices\_NOV\_2006\Report\_Alignments\_11x17.mxd | Last Updated: 11.04.2015



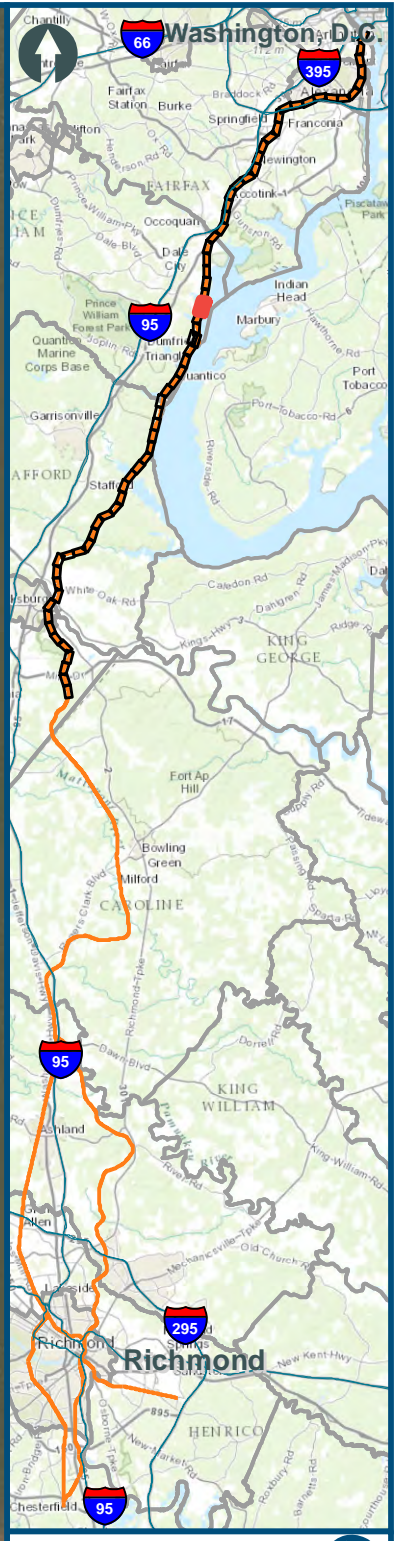
0 150 300  
Feet  
1 inch = 300 feet  
@ 11 x 17 inches  
Projection: Lambert Conformal Conic  
State Plane Virginia North FIPS 4501 Feet  
North American Datum of 1983  
Imagery: Bing Map Aerial

- Legend**
-  VRE Station
  -  CSXT Mileposts
  -  Existing Track
  -  New Track
  -  CSXT Right-of-Way
  -  Streams

**Figure L-30**  
**Northern Virginia**  
**2006 Report**  
**Alignment Option**



\\dlismain\GIS\_DATA\GIS\Projects\011545\_VA\DeptofRails-PublicTransportation\0239056\_RAPS-4\AIDev-ConceptEng\map\_docs\mxd\Alt\_Tech\_Report\DC2RVA\_Chr6\_Appendices\_NOV\_2006\Report\_Alignments\_11x17.mxd | Last Updated: 11.04.2015



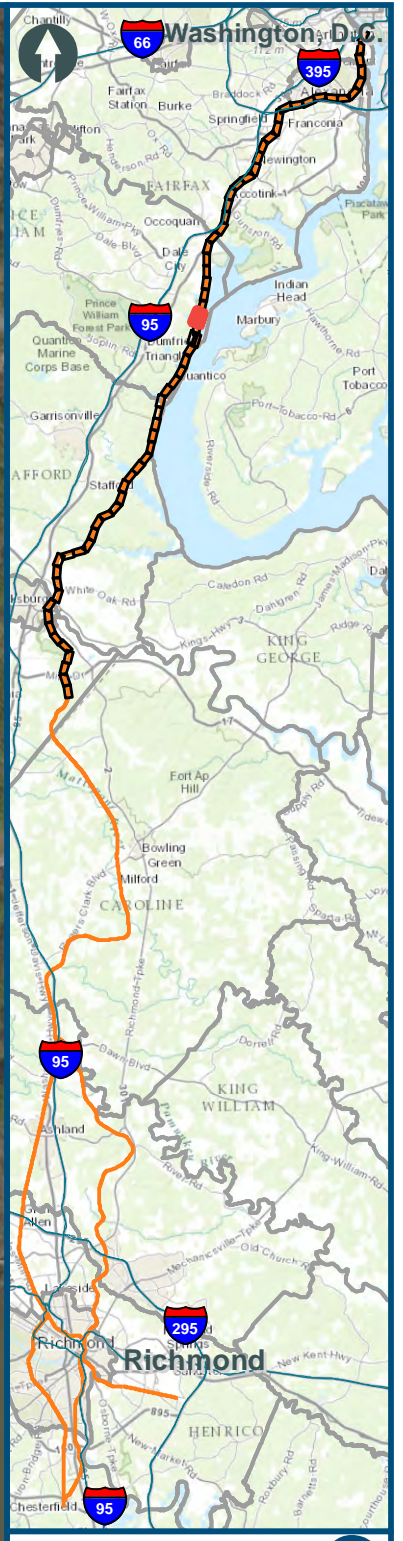
0 150 300  
Feet  
1 inch = 300 feet  
@ 11 x 17 inches  
Projection: Lambert Conformal Conic  
State Plane Virginia North FIPS 4501 Feet  
North American Datum of 1983  
Imagery: Bing Map Aerial

- Legend**
- CSXT Mileposts
  - Existing Track
  - New Track
  - CSXT Right-of-Way
  - Streams

**Figure L-31**  
**Northern Virginia**  
**2006 Report**  
**Alignment Option**



\\dlismain\GIS\_DATA\GIS\Projects\011545\_VA\DeptofRails-PublicTransportation\0239056\_RAPS-4\AIDev-ConceptEng\map\_docs\mxd\Alt\_Tech\_Report\DC2RVA\_Chr6\_Appendices\_NOV\_2006\Report\_Alignments\_11x17.mxd | Last Updated: 11.04.2015



0 150 300  
Feet  
1 inch = 300 feet  
@ 11 x 17 inches  
Projection: Lambert Conformal Conic  
State Plane Virginia North FIPS 4501 Feet  
North American Datum of 1983  
Imagery: Bing Map Aerial

- Legend**
- CSXT Mileposts
  - Existing Track
  - New Track
  - CSXT Right-of-Way
  - Streams

**Figure L-32**  
**Northern Virginia**  
**2006 Report**  
**Alignment Option**



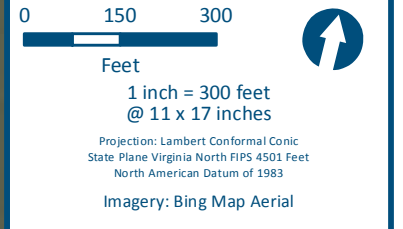
\\dlismain\GIS\_DATA\GIS\Projects\011545\_VA\DeptofRails-PublicTransportation\0239056\_RAPS-4\AIDev-ConceptEng\map\_docs\mxd\Alt\_Tech\_Report\DC2RVA\_Chr6\_Appendices\_NOV\_2006\Report\_Alignments\_11x17.mxd | Last Updated: 11.11.2015










Planned VRE  
- Potomac  
Shores Station

CFP 083

Cherry Hill Rd

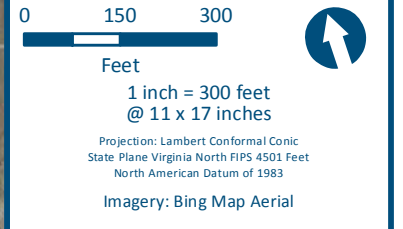
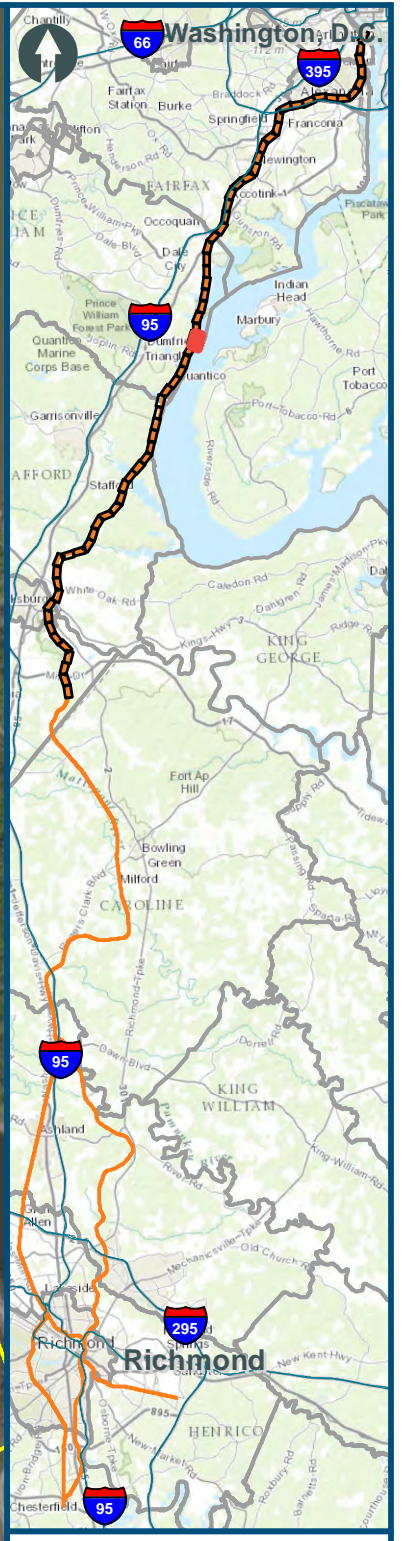








- Legend**
-  VRE Station
  -  CSXT Mileposts
  -  Third Track Under Construction by CSXT
  -  Existing Track
  -  New Track
  -  CSXT Right-of-Way
  -  Streams

**Figure L-33**  
**Northern Virginia**  
**2006 Report**  
**Alignment Option**



\\dlismain\GIS\_DATA\GIS\Projects\011545\_VA\DeptofRails-PublicTransportation\0239056\_RAPS-4\AIDev-ConceptEng\map\_docs\mxd\Alt\_Tech\_Report\DC2RVA\_Chr6\_Appendices\_NOV\_2006\Report\_Alignments\_11x17.mxd | Last Updated: 11.11.2015



- Legend**
-  CSXT Mileposts
  -  Third Track Under Construction by CSXT
  -  Existing Track
  -  New Track
  -  CSXT Right-of-Way
  -  Streams

**Figure L-34**  
**Northern Virginia**  
**2006 Report**  
**Alignment Option**