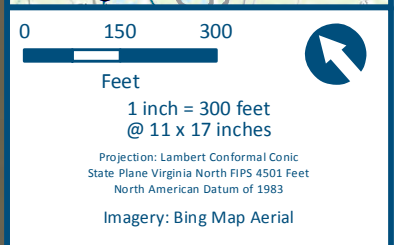
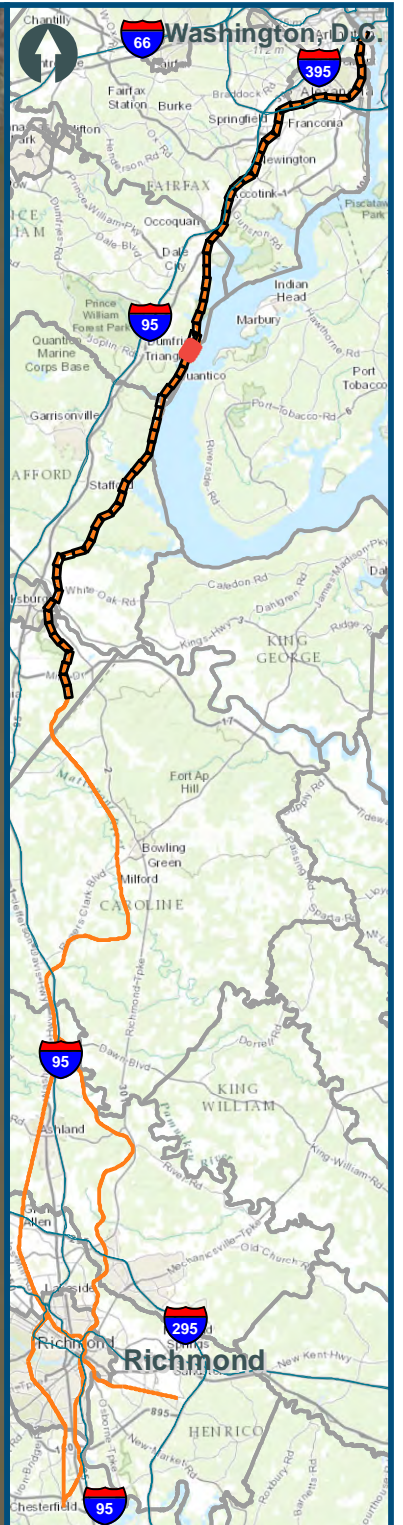


\\dlismain\GIS_DATA\GIS\Projects\011545_VA\DeptofRails-PublicTransportation\0239056_RAPS-4\AIDev-ConceptEng\map_docs\mxd\Alt_Tech_Report\DC2RVA_Ch6_Appendices_NOV_2006\Report_Alignments_11x17.mxd | Last Updated: 11.11.2015









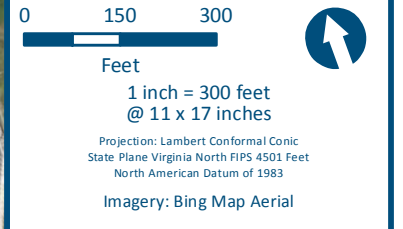
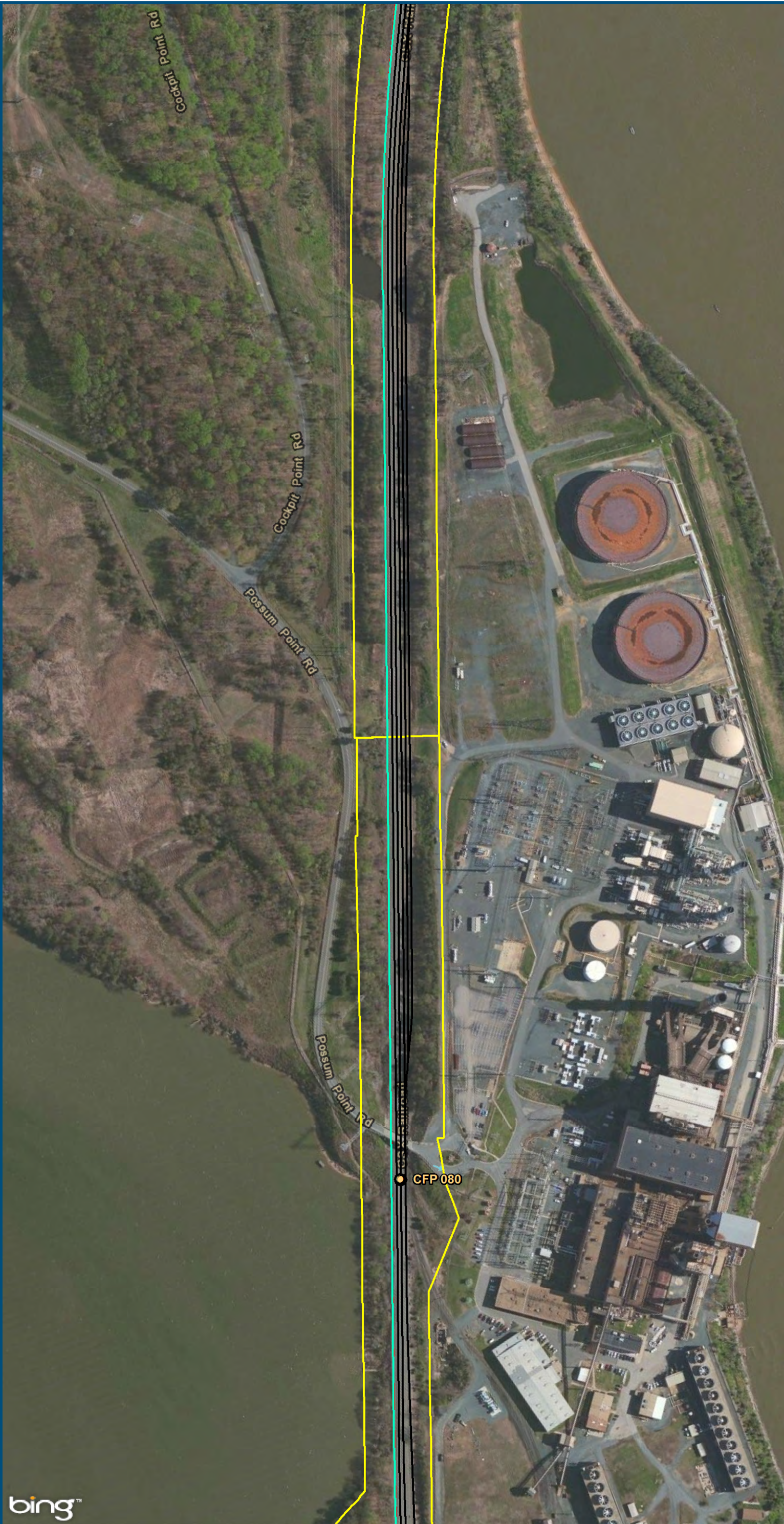
- Legend**
-  CSXT Mileposts
 -  Third Track Under Construction by CSXT
 -  Existing Track
 -  New Track
 -  CSXT Right-of-Way
 -  Streams

Figure L-35
Northern Virginia
2006 Report
Alignment Option

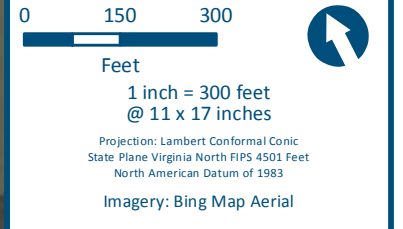
\\dlismain\GIS_DATA\GIS\Projects\011545_VA\DeptofRails-PublicTransportation\0239056_RAPS-4\AIDev-ConceptEng\map_docs\mxd\Alt_Tech_Report\DC2RVA_Chr6_Appendices_NOV_2006\Report_Alignments_11x17.mxd | Last Updated: 11.11.2015



- Legend**
- CSXT Mileposts
 - Third Track Under Construction by CSXT
 - Existing Track
 - New Track
 - CSXT Right-of-Way
 - Streams

Figure L-36
Northern Virginia
2006 Report
Alignment Option

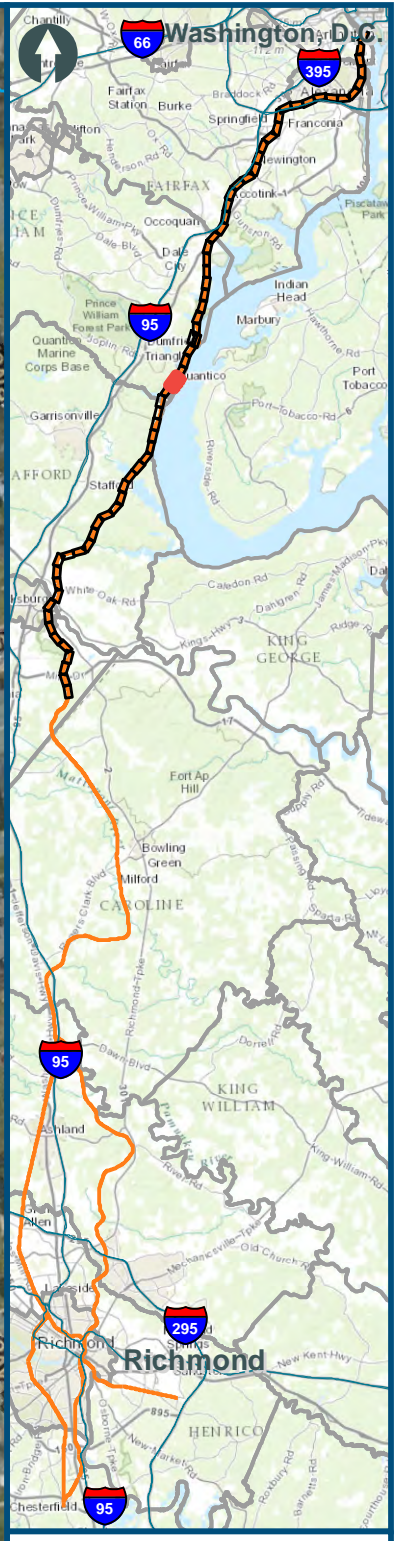
\\dlismain\GIS_DATA\GIS\Projects\011545_VA Dept of Rail-Public Transportation\0239056_RAPS-4\AIDev-Concept\Eng\map_docs\mxd\Alt_Tech_Report\DC2RVA_Chr6_Appendices_NOV_2006\Report_Alignments_11x17.mxd | Last Updated: 11.11.2015



- Legend**
- CSXT Mileposts
 - Third Track Under Construction by CSXT
 - Existing Track
 - New Track
 - CSXT Right-of-Way
 - Streams

Figure L-37
Northern Virginia
2006 Report
Alignment Option

\\dlmain\GIS_DATA\GIS\Projects\011545_VA\DeptofRails-PublicTransportation\0239056_RAPS-4\AllDev-Concept\Eng\map_docs\mxd\Alt_Tech_Report\DC2RVA_Ch6_Appendices_NOV_2006\Report_Alignments_11x17.mxd | Last Updated: 11.11.2015










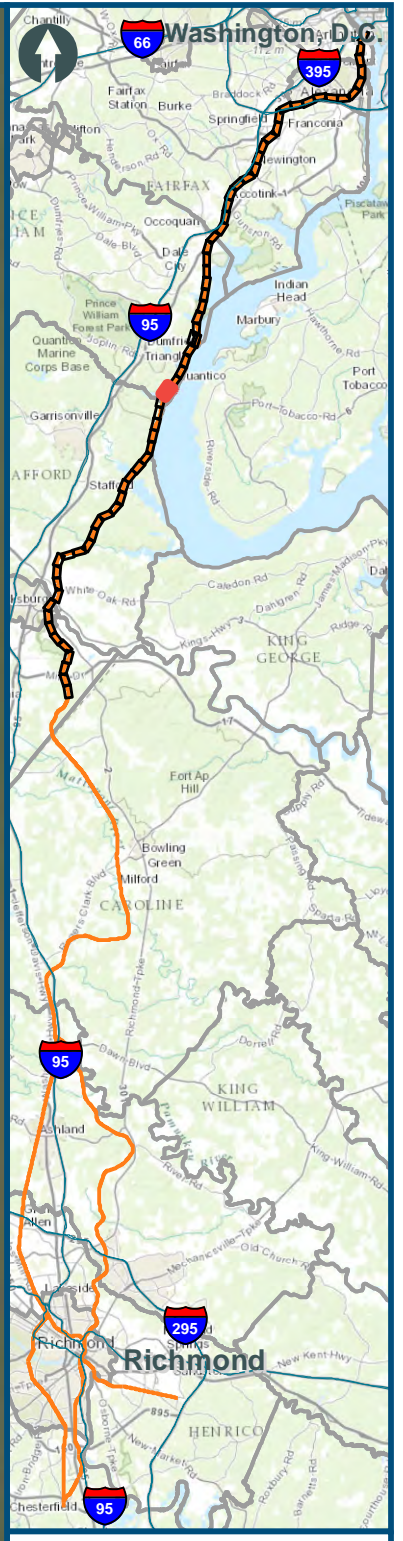
- Legend**
-  Amtrak/VRE Station
 -  CSXT Mileposts
 -  Third Track Under Construction by CSXT
 -  Existing Track
 -  New Track
 -  CSXT Right-of-Way
 -  Streams

Figure L-38
Northern Virginia
2006 Report
Alignment Option

\\dlmain\GIS_DATA\GIS\Projects\11545_VA Dept of Rail\PublicTransportation\0239056_RAPS-4\AI\Dev-Concept\Eng\map_docs\mxd\Alt_Tech_Report\DC2RVA_Chr6_Appendices_NOV_2006\Report_Alignments_11x17.mxd | Last Updated: 11.11.2015



0 150 300
Feet
1 inch = 300 feet
@ 11 x 17 inches
Projection: Lambert Conformal Conic
State Plane Virginia North FIPS 4501 Feet
North American Datum of 1983
Imagery: Bing Map Aerial

- Legend**
- CSXT Mileposts
 - Third Track Under Construction by CSXT
 - Existing Track
 - New Track
 - CSXT Right-of-Way
 - Streams

Figure L-39
Northern Virginia
2006 Report
Alignment Option

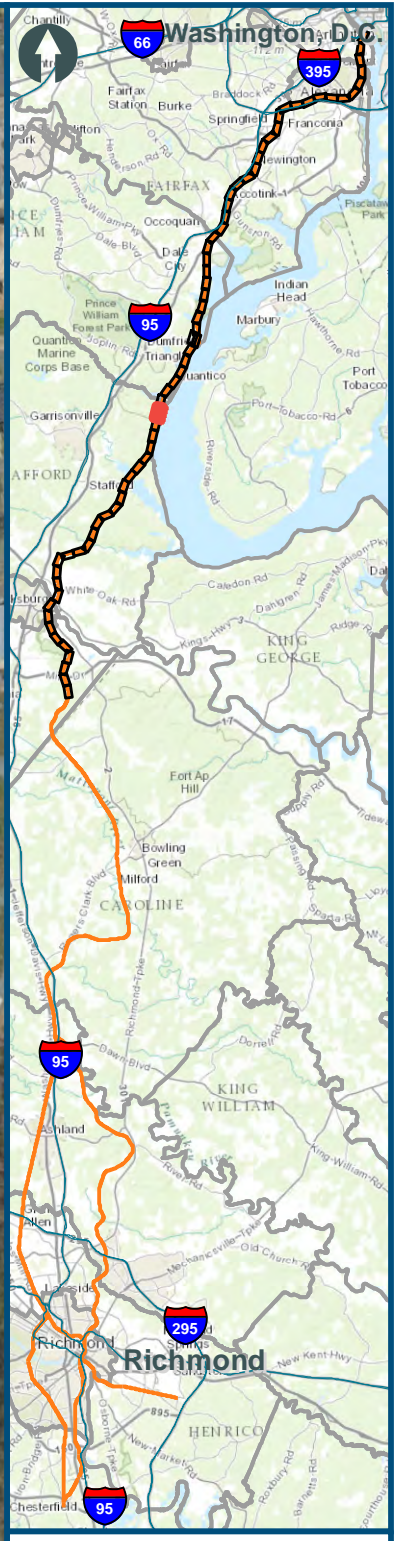


0 150 300
Feet
1 inch = 300 feet
@ 11 x 17 inches
Projection: Lambert Conformal Conic
State Plane Virginia North FIPS 4501 Feet
North American Datum of 1983
Imagery: Bing Map Aerial

- Legend**
- CSXT Mileposts
 - Third Track Under Construction by CSXT
 - Existing Track
 - New Track
 - CSXT Right-of-Way
 - Streams

Figure L-40
Northern Virginia
2006 Report
Alignment Option

\\dlismain\GIS_DATA\GIS\Projects\011545_VA\DeptofRails-PublicTransportation\0239056_RAPS-4\AIDev-Concept\Eng\map_docs\mxd\Alt_Tech_Report\DC2RVA_Chr6_Appendices_NOV_2006\Report_Alignments_11x17.mxd | Last Updated: 11.11.2015



0 150 300
Feet
1 inch = 300 feet
@ 11 x 17 inches
Projection: Lambert Conformal Conic
State Plane Virginia North FIPS 4501 Feet
North American Datum of 1983
Imagery: Bing Map Aerial

Legend

- CSXT Mileposts
- Third Track Under Construction by CSXT
- Existing Track
- New Track
- CSXT Right-of-Way
- Streams

Figure L-41
Northern Virginia
2006 Report
Alignment Option

\\dlismain\GIS_DATA\GIS\Projects\011545_VA\DeptofRails-PublicTransportation\0239056_RAPS-4\AllDev-Concept\Eng\map_docs\mxd\Alt_Tech_Report\DC2RVA_Chr6_Appendices_NOV_2006\Report_Alignments_11x17.mxd | Last Updated: 11.11.2015

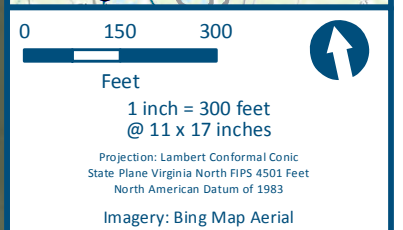
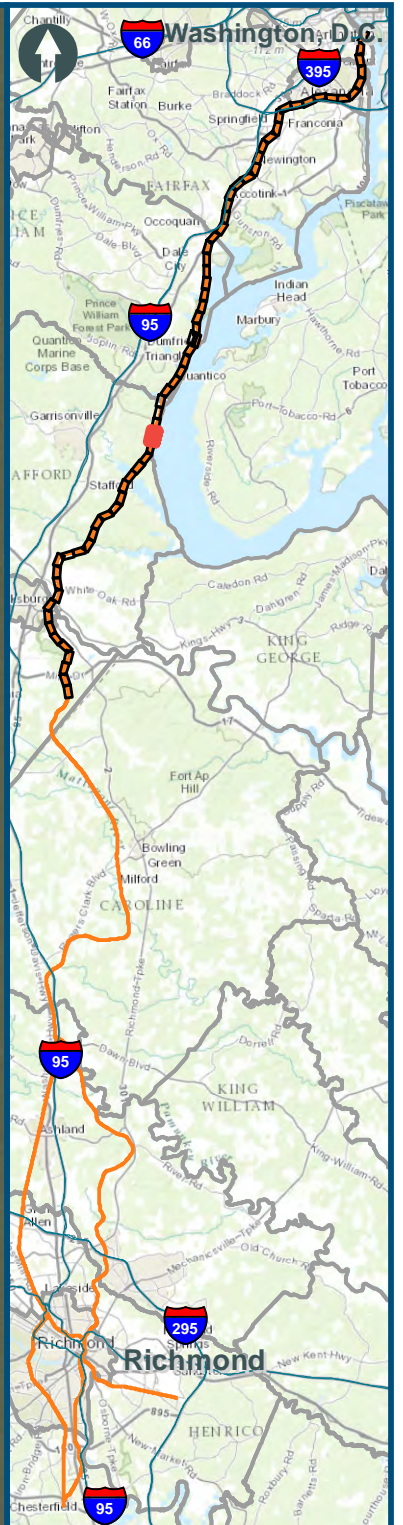


0 150 300
Feet
1 inch = 300 feet
@ 11 x 17 inches
Projection: Lambert Conformal Conic
State Plane Virginia North FIPS 4501 Feet
North American Datum of 1983
Imagery: Bing Map Aerial

- Legend**
- CSXT Mileposts
 - Third Track Under Construction by CSXT
 - Existing Track
 - New Track
 - CSXT Right-of-Way
 - Streams

Figure L-42
Northern Virginia
2006 Report
Alignment Option

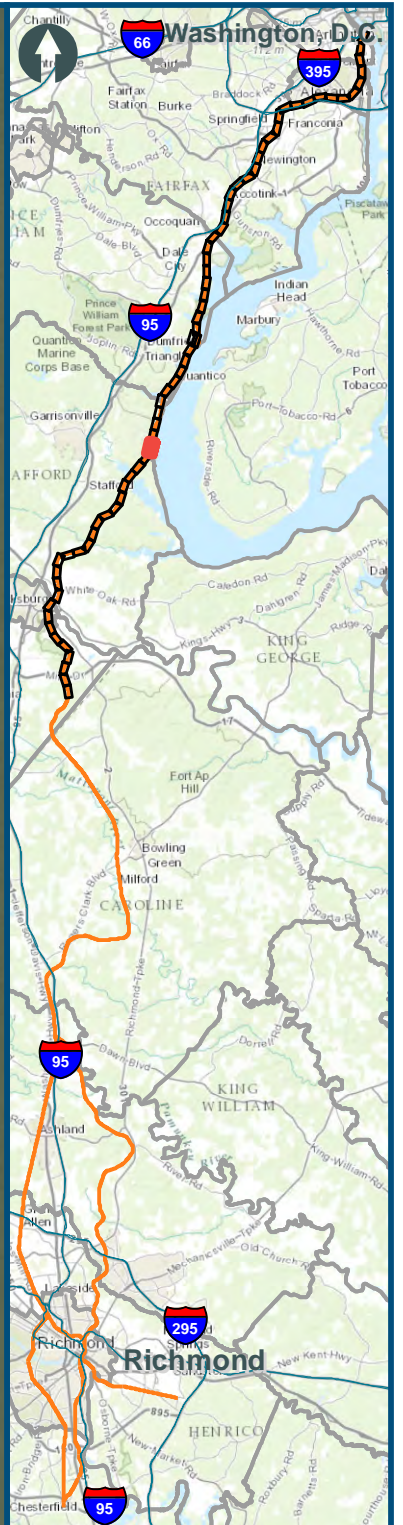
\\dlismain\GIS_DATA\GIS\Projects\011545_VA\DeptofRails-PublicTransportation\0239056_RAPS-4\AIDev-ConceptEng\map_docs\mxd\Alt_Tech_Report\DC2RVA_Chr6_Appendices_NOV_2006\Report_Alignments_11x17.mxd | Last Updated: 11.11.2015



- Legend**
- CSXT Mileposts
 - Third Track Under Construction by CSXT
 - Existing Track
 - New Track
 - CSXT Right-of-Way
 - Streams

Figure L-43
Northern Virginia
2006 Report
Alignment Option

\\dlismain\GIS_DATA\GIS\Projects\011545_VA\DeptofRails-PublicTransportation\0239056_RAPS-4\AIDev-Concept\Eng\map_docs\mxd\Alt_Tech_Report\DC2RVA_Cht6_Appendices_NOV_2006\Report_Alignments_11x17.mxd | Last Updated: 11.11.2015



0 150 300
Feet
1 inch = 300 feet
@ 11 x 17 inches
Projection: Lambert Conformal Conic
State Plane Virginia North FIPS 4501 Feet
North American Datum of 1983
Imagery: Bing Map Aerial

- Legend**
- CSXT Mileposts
 - Third Track Under Construction by CSXT
 - Existing Track
 - New Track
 - CSXT Right-of-Way
 - Streams

Figure L-44
Northern Virginia
2006 Report
Alignment Option

\\dlismain\GIS_DATA\GIS\Projects\011545_VA\DeptofRails-PublicTransportation\0239056_RAPS-4\AIDev-Concept\Eng\map_docs\mxd\Alt_Tech_Report\DC2RVA_Cht6_Appendices_NOV_2006\Report_Alignments_11x17.mxd | Last Updated: 11.11.2015

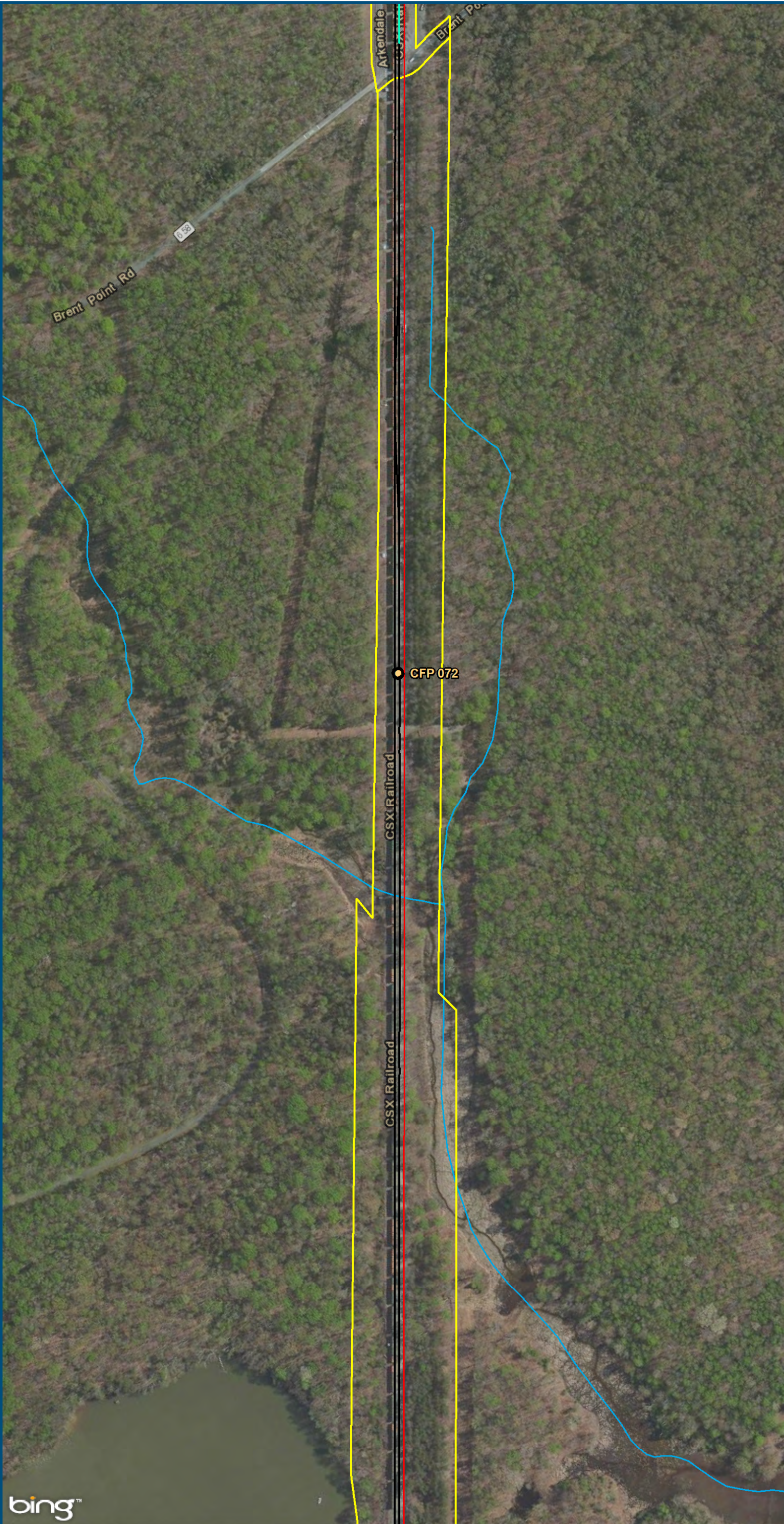


0 150 300
Feet
1 inch = 300 feet
@ 11 x 17 inches
Projection: Lambert Conformal Conic
State Plane Virginia North FIPS 4501 Feet
North American Datum of 1983
Imagery: Bing Map Aerial

- Legend**
- CSXT Mileposts
 - Third Track Under Construction by CSXT
 - Existing Track
 - New Track
 - CSXT Right-of-Way
 - Streams

Figure L-45
Northern Virginia
2006 Report
Alignment Option

\\dlismain\GIS_DATA\GIS\Projects\011545_VA\DeptofRails-PublicTransportation\0239056_RAPS-4\AIDev-ConceptEng\map_docs\mxd\Alt_Tech_Report\DC2RVA_Cht6_Appendices_NOV_2006\Report_Alignments_11x17.mxd | Last Updated: 11.11.2015

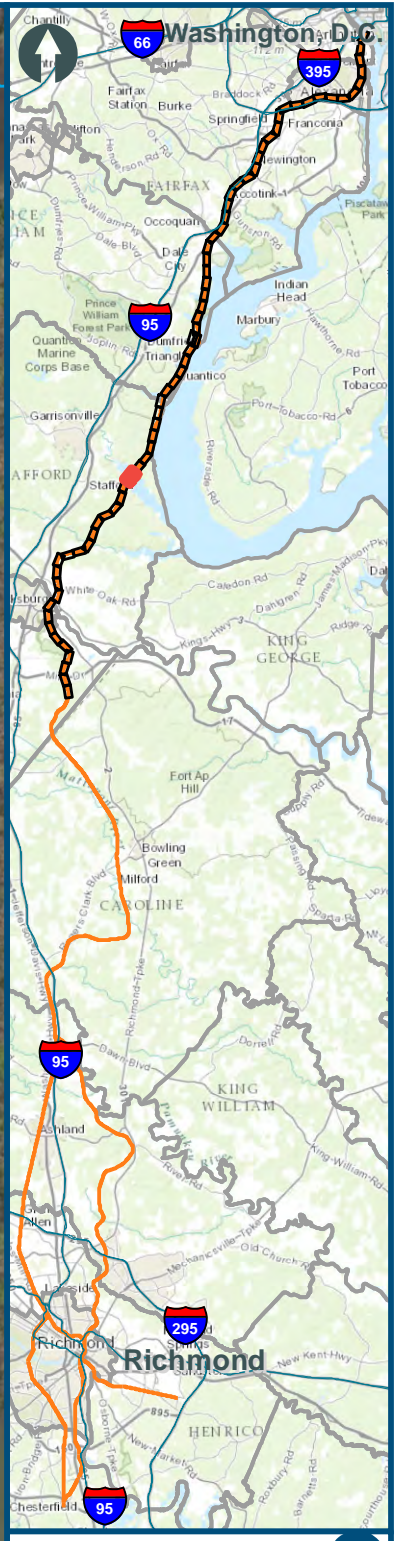


0 150 300
Feet
1 inch = 300 feet
@ 11 x 17 inches
Projection: Lambert Conformal Conic
State Plane Virginia North FIPS 4501 Feet
North American Datum of 1983
Imagery: Bing Map Aerial

- Legend**
- CSXT Mileposts
 - Third Track Under Construction by CSXT
 - Existing Track
 - New Track
 - CSXT Right-of-Way
 - Streams

Figure L-46
Northern Virginia
2006 Report
Alignment Option

\\dlismain\GIS_DATA\GIS\Projects\011545_VA\DeptofRails-PublicTransportation\0239056_RAPS-4\AIDev-Concept\Eng\map_docs\mxd\Alt_Tech_Report\DC2RVA_Chr6_Appendices_NOV_2006\Report_Alignments_11x17.mxd | Last Updated: 11.04.2015

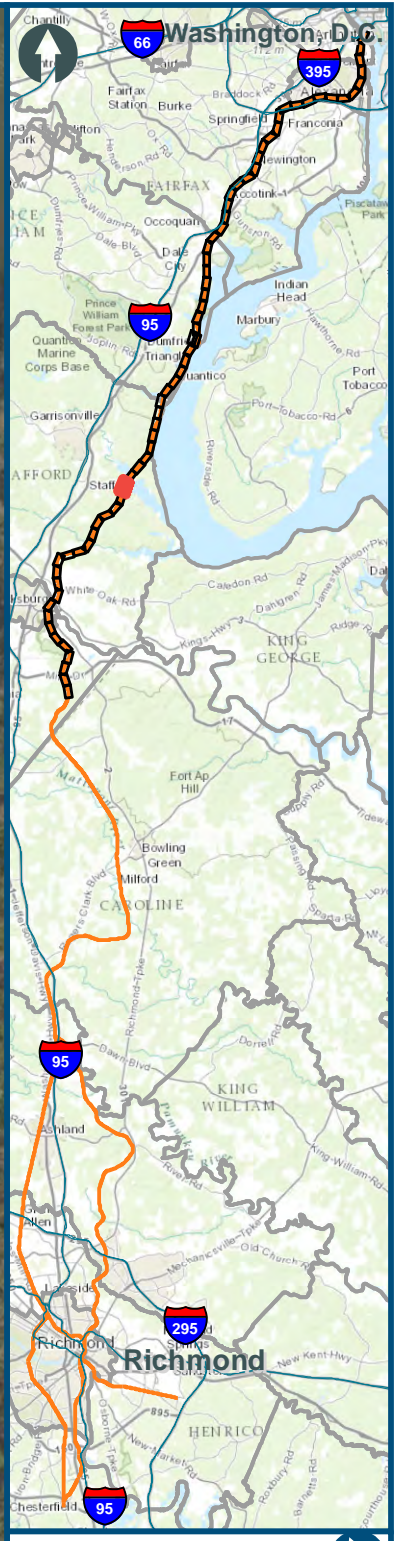


0 150 300
Feet
1 inch = 300 feet
@ 11 x 17 inches
Projection: Lambert Conformal Conic
State Plane Virginia North FIPS 4501 Feet
North American Datum of 1983
Imagery: Bing Map Aerial

- Legend**
- CSXT Mileposts
 - Existing Track
 - New Track
 - CSXT Right-of-Way
 - Streams

Figure L-47
Northern Virginia
2006 Report
Alignment Option

\\dlismain\GIS_DATA\GIS\Projects\011545_VA\DeptofRails-PublicTransportation\0239056_RAPS-4\AllDev-Concept\Eng\map_docs\mxd\Alt_Tech_Report\DC2RVA_Chr6_Appendices_NOV_2006\Report_Alignments_11x17.mxd | Last Updated: 11.04.2015

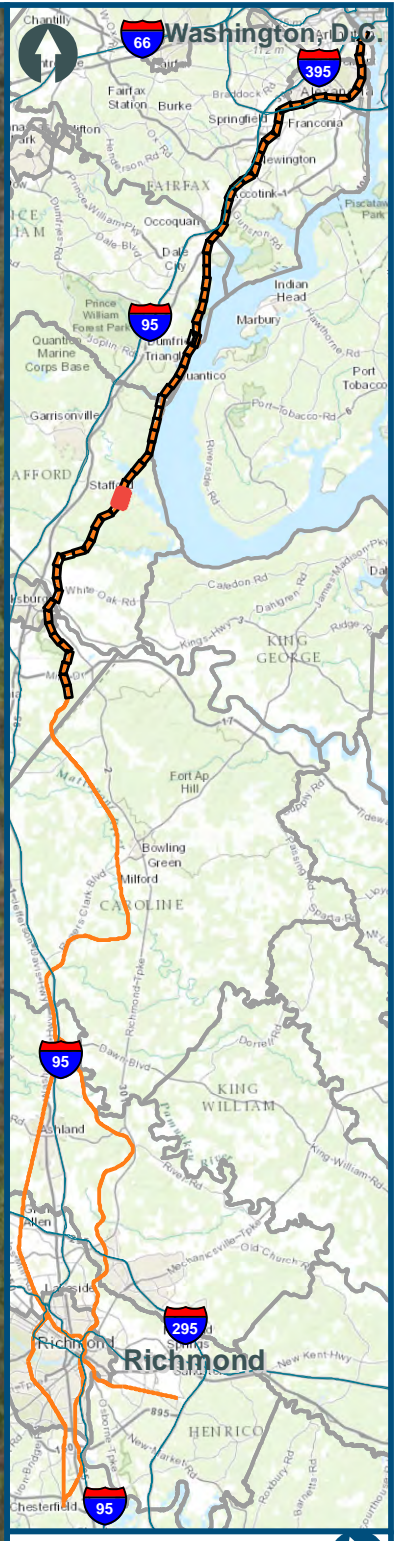


0 150 300
Feet
1 inch = 300 feet
@ 11 x 17 inches
Projection: Lambert Conformal Conic
State Plane Virginia North FIPS 4501 Feet
North American Datum of 1983
Imagery: Bing Map Aerial

- Legend**
- CSXT Mileposts
 - Existing Track
 - New Track
 - CSXT Right-of-Way
 - Streams

Figure L-48
Northern Virginia
2006 Report
Alignment Option

\\dlismain\GIS_DATA\GIS\Projects\011545_VA\DeptofRails-PublicTransportation\0239056_RAPS-4\AIDev-ConceptEng\map_docs\mxd\Alt_Tech_Report\DC2RVA_Chr6_Appendices_NOV_2006\Report_Alignments_11x17.mxd | Last Updated: 11.04.2015

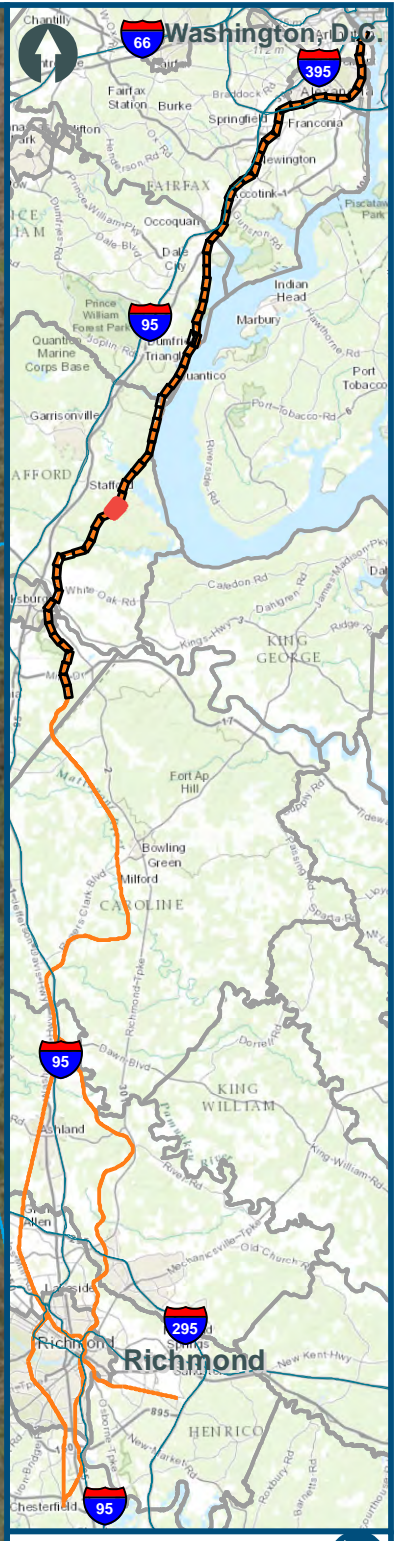


0 150 300
Feet
1 inch = 300 feet
@ 11 x 17 inches
Projection: Lambert Conformal Conic
State Plane Virginia North FIPS 4501 Feet
North American Datum of 1983
Imagery: Bing Map Aerial

- Legend**
- CSXT Mileposts
 - Existing Track
 - New Track
 - CSXT Right-of-Way
 - Streams

Figure L-49
Northern Virginia
2006 Report
Alignment Option

\\dlismain\GIS_DATA\GIS\Projects\011545_VA\DeptofRails-PublicTransportation\0239056_RAPS-4\AIDev-Concept\Eng\map_docs\mxd\Alt_Tech_Report\DC2RVA_Chr6_Appendices_NOV_2006\Report_Alignments_11x17.mxd | Last Updated: 11.04.2015



0 150 300
Feet
1 inch = 300 feet
@ 11 x 17 inches
Projection: Lambert Conformal Conic
State Plane Virginia North FIPS 4501 Feet
North American Datum of 1983
Imagery: Bing Map Aerial

- Legend**
- CSXT Mileposts
 - Existing Track
 - New Track
 - CSXT Right-of-Way
 - Streams

Figure L-50
Northern Virginia
2006 Report
Alignment Option

\\dlismain\GIS_DATA\GIS\Projects\011545_VA\DeptofRails-PublicTransportation\0239056_RAPS-4\AllDev-Concept\Eng\map_docs\mxd\Alt_Tech_Report\DC2RVA_Cht6_Appendices_NOV_2006\Report_Alignments_11x17.mxd | Last Updated: 11.04.2015

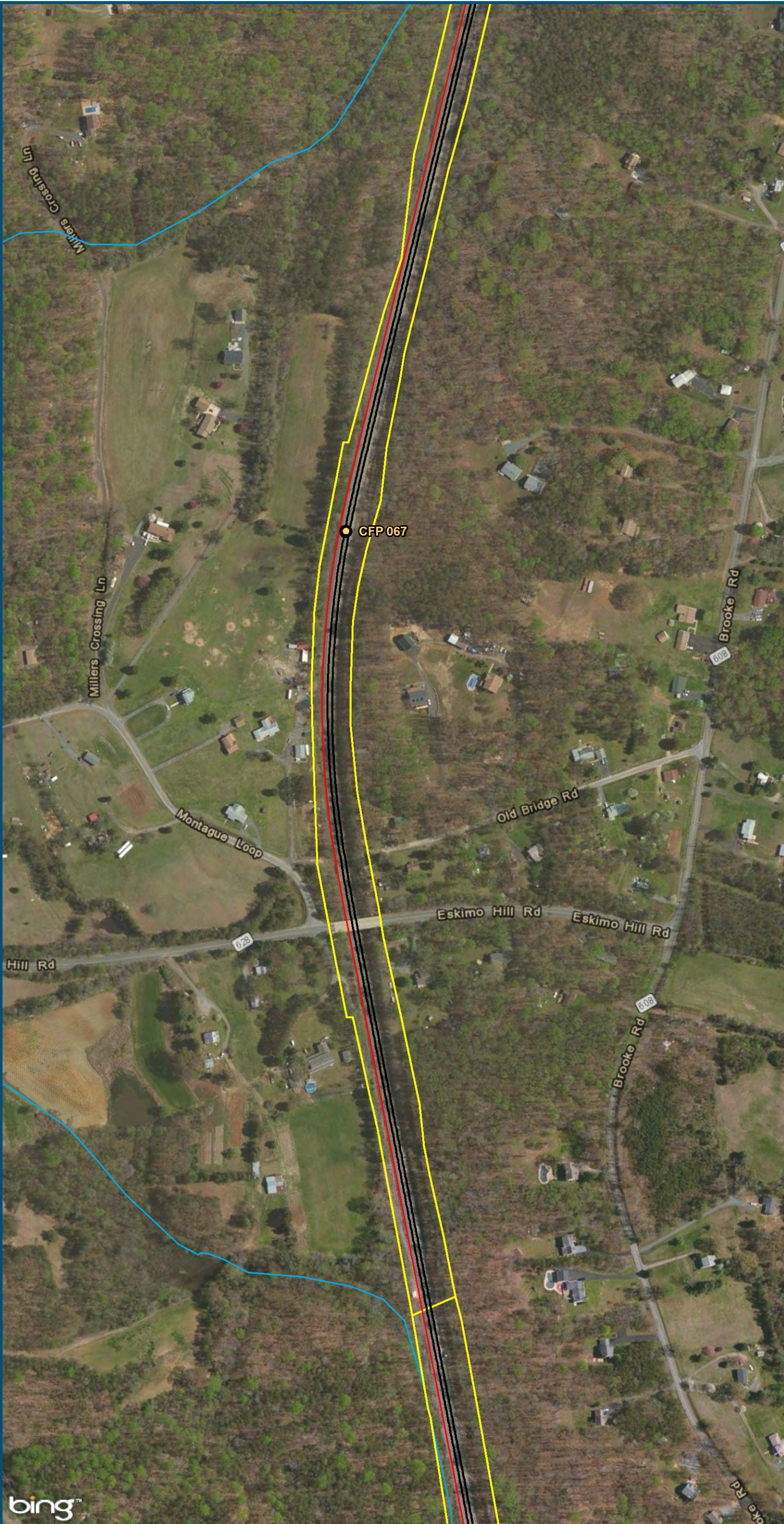


0 150 300
Feet
1 inch = 300 feet
@ 11 x 17 inches
Projection: Lambert Conformal Conic
State Plane Virginia North FIPS 4501 Feet
North American Datum of 1983
Imagery: Bing Map Aerial

- Legend**
- VRE Station
 - CSXT Mileposts
 - Existing Track
 - New Track
 - CSXT Right-of-Way
 - Streams

Figure L-51
Northern Virginia
2006 Report
Alignment Option

\\dlismain\GIS_DATA\GIS\Projects\011545_VA\DeptofRails-PublicTransportation\0239056_RAPS-4\AIDev-ConceptEng\map_docs\mxd\Alt_Tech_Report\DC2RVA_Chr6_Appendices_NOV_2006\Report_Alignments_11x17.mxd | Last Updated: 11.04.2015

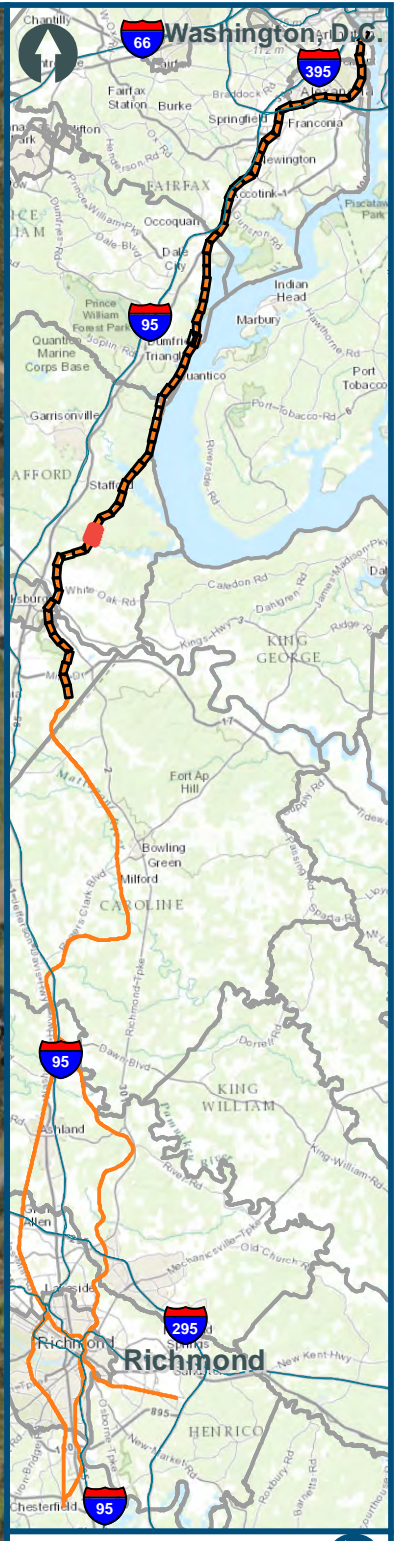
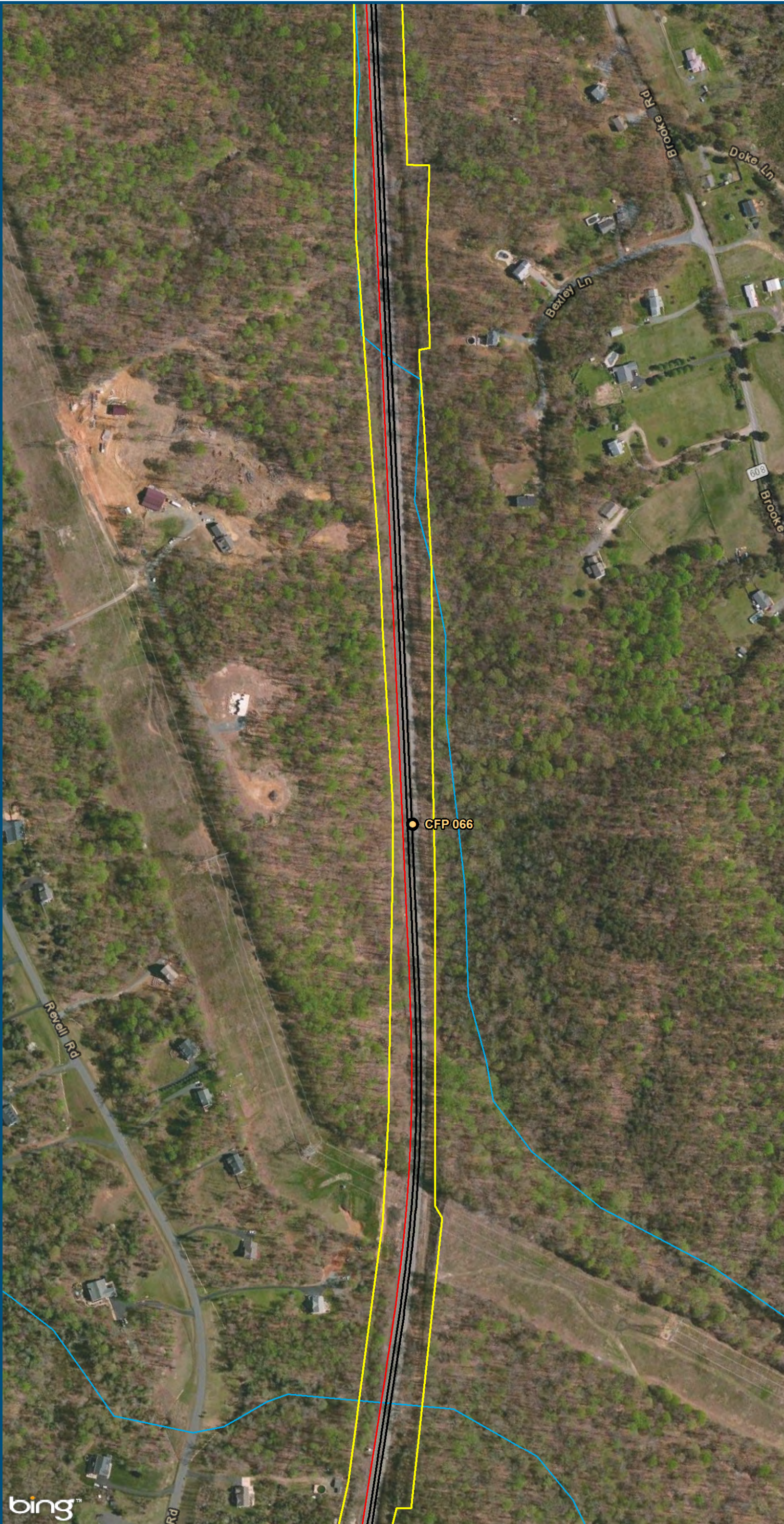


0 150 300
Feet
1 inch = 300 feet
@ 11 x 17 inches
Projection: Lambert Conformal Conic
State Plane Virginia North FIPS 4501 Feet
North American Datum of 1983
Imagery: Bing Map Aerial

- Legend**
- CSXT Mileposts
 - Existing Track
 - New Track
 - CSXT Right-of-Way
 - Streams

Figure L-52
Northern Virginia
2006 Report
Alignment Option

\\dlismain\GIS_DATA\GIS\Projects\011545_VA\DeptofRails-Public\Transportation\0239056_RAPS-4\AIDev-Concept\Eng\map_docs\mxd\Alt_Tech_Report\DC2RVA_Ch6_Appendices_NOV_2006\Report_Alignments_11x17.mxd | Last Updated: 11.04.2015

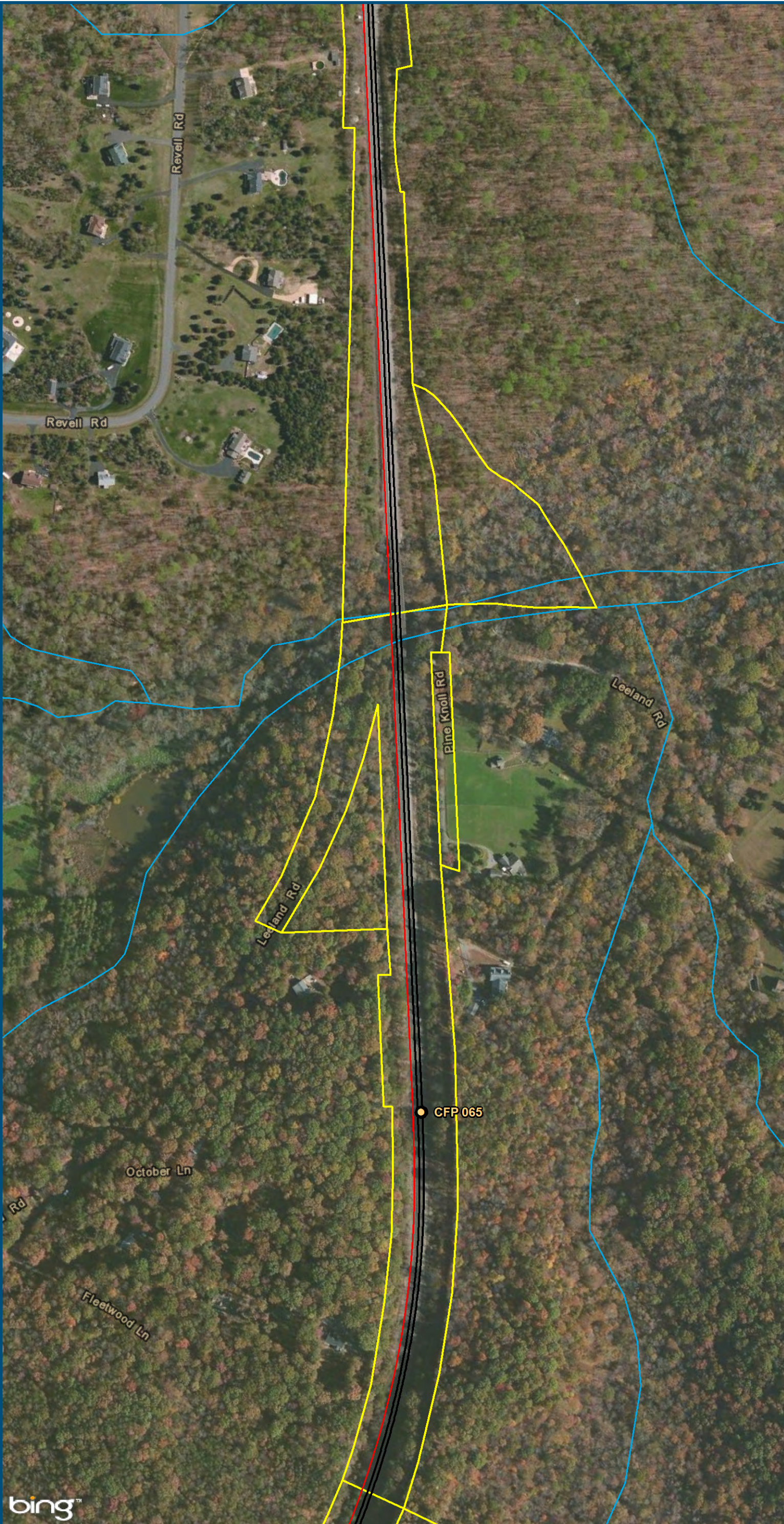


0 150 300
Feet
1 inch = 300 feet
@ 11 x 17 inches
Projection: Lambert Conformal Conic
State Plane Virginia North FIPS 4501 Feet
North American Datum of 1983
Imagery: Bing Map Aerial

- Legend**
- CSXT Mileposts
 - Existing Track
 - New Track
 - CSXT Right-of-Way
 - Streams

Figure L-53
Northern Virginia
2006 Report
Alignment Option

\\dlismain\GIS_DATA\GIS\Projects\011545_VA\DeptofRails-PublicTransportation\0239056_RAPS-4\AIDev-Concept\Eng\map_docs\mxd\Alt_Tech_Report\DC2RVA_Chr6_Appendices_NOV_2006\Report_Alignments_11x17.mxd | Last Updated: 11.04.2015



0 150 300
Feet
1 inch = 300 feet
@ 11 x 17 inches
Projection: Lambert Conformal Conic
State Plane Virginia North FIPS 4501 Feet
North American Datum of 1983
Imagery: Bing Map Aerial

- Legend**
- CSXT Mileposts
 - Existing Track
 - New Track
 - CSXT Right-of-Way
 - Streams

Figure L-54
Northern Virginia
2006 Report
Alignment Option

\\dlismain\GIS_DATA\GIS\Projects\011545_VA\DeptofRails-PublicTransportation\0239056_RAPS-4\AIDev-ConceptEng\map_docs\mxd\Alt_Tech_Report\DC2RVA_Chr6_Appendices_NOV_2006\Report_Alignments_11x17.mxd | Last Updated: 11.04.2015



0 150 300
Feet
1 inch = 300 feet
@ 11 x 17 inches
Projection: Lambert Conformal Conic
State Plane Virginia North FIPS 4501 Feet
North American Datum of 1983
Imagery: Bing Map Aerial

- Legend**
- CSXT Mileposts
 - Existing Track
 - New Track
 - CSXT Right-of-Way
 - Streams

Figure L-55
Northern Virginia
2006 Report
Alignment Option

\\dlismain\GIS_DATA\GIS\Projects\011545_VA\DeptofRails-PublicTransportation\0239056_RAPS-4\AllDev-Concept\Eng\map_docs\mxd\Alt_Tech_Report\DC2RVA_Chr6_Appendices_NOV_2006\Report_Alignments_11x17.mxd | Last Updated: 11.04.2015

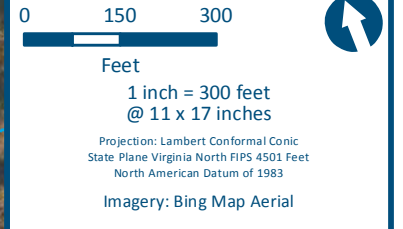


0 150 300
Feet
1 inch = 300 feet
@ 11 x 17 inches
Projection: Lambert Conformal Conic
State Plane Virginia North FIPS 4501 Feet
North American Datum of 1983
Imagery: Bing Map Aerial

- Legend**
- VRE Station
 - CSXT Mileposts
 - Existing Track
 - New Track
 - CSXT Right-of-Way
 - Streams

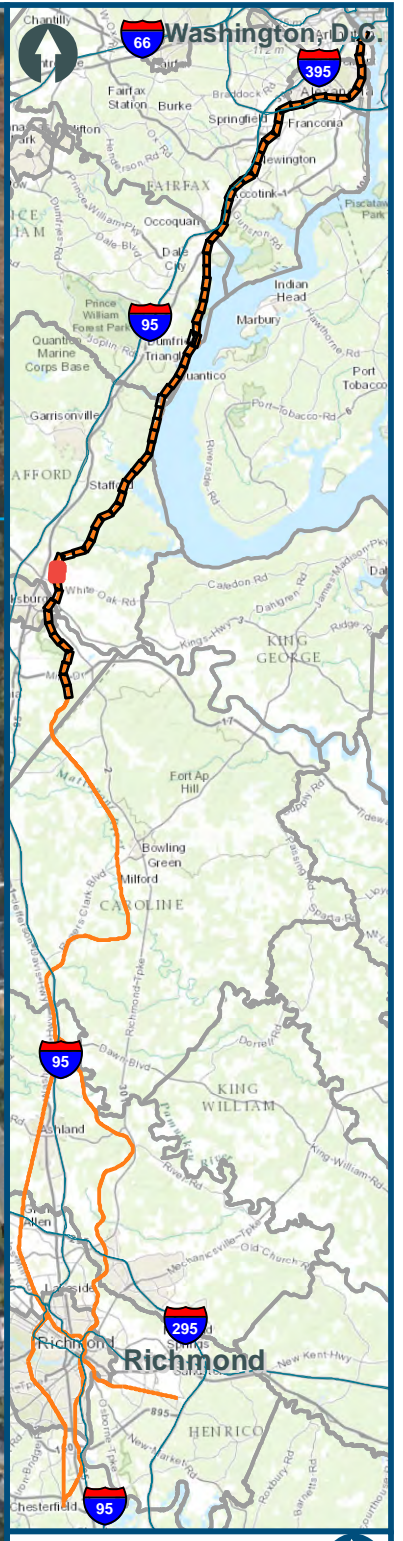
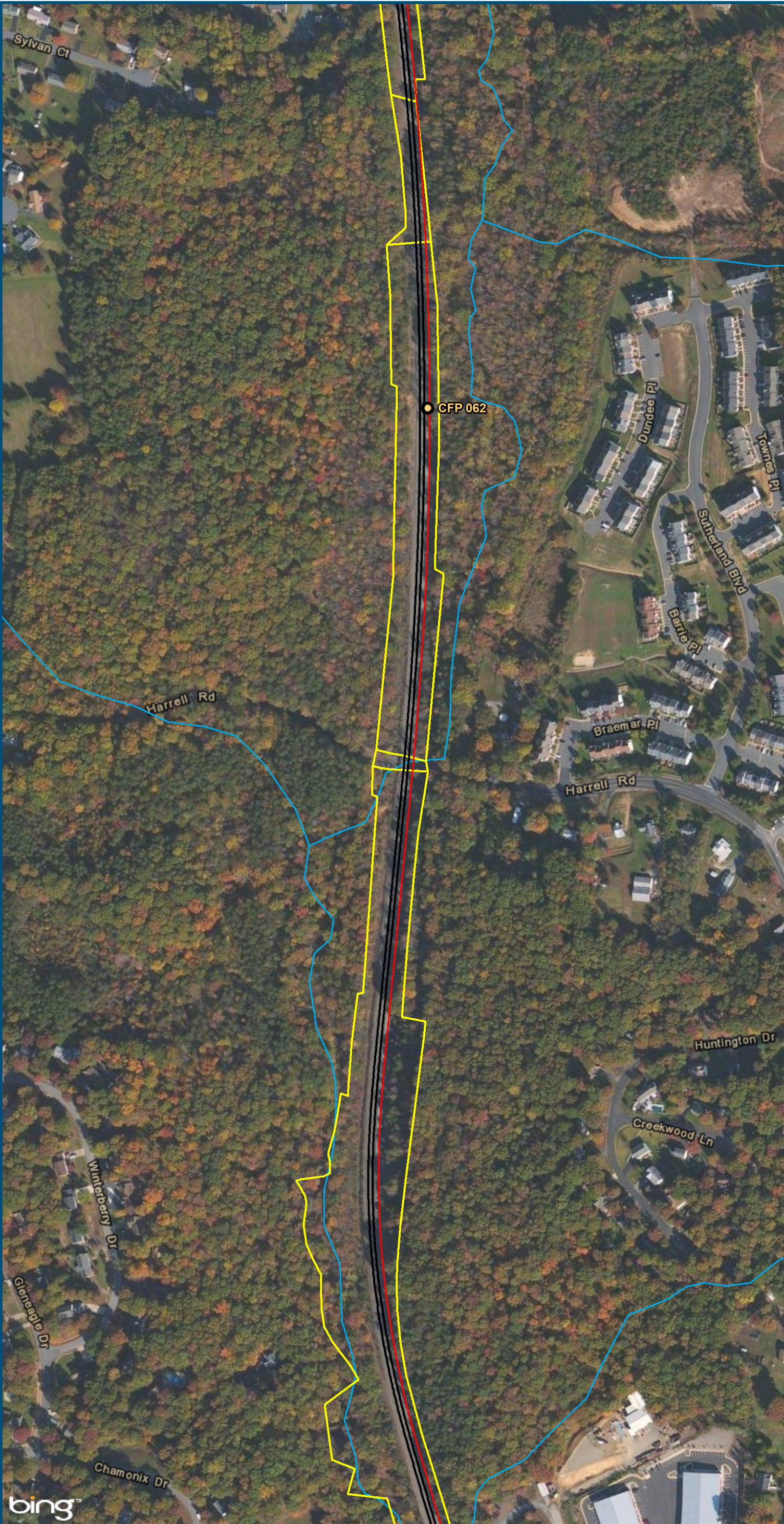
Figure L-56
Northern Virginia
2006 Report
Alignment Option

\\dlismain\GIS_DATA\GIS\Projects\011545_VA\DeptofRails-PublicTransportation\0239056_RAPS-4\AIDev-Concept\Eng\map_docs\mxd\Alt_Tech_Report\DC2RVA_Cht6_Appendices_NOV_2006\Report_Alignments_11x17.mxd | Last Updated: 11.04.2015



- Legend**
- CSXT Mileposts
 - Existing Track
 - New Track
 - CSXT Right-of-Way
 - Streams

Figure L-57
Northern Virginia
2006 Report
Alignment Option



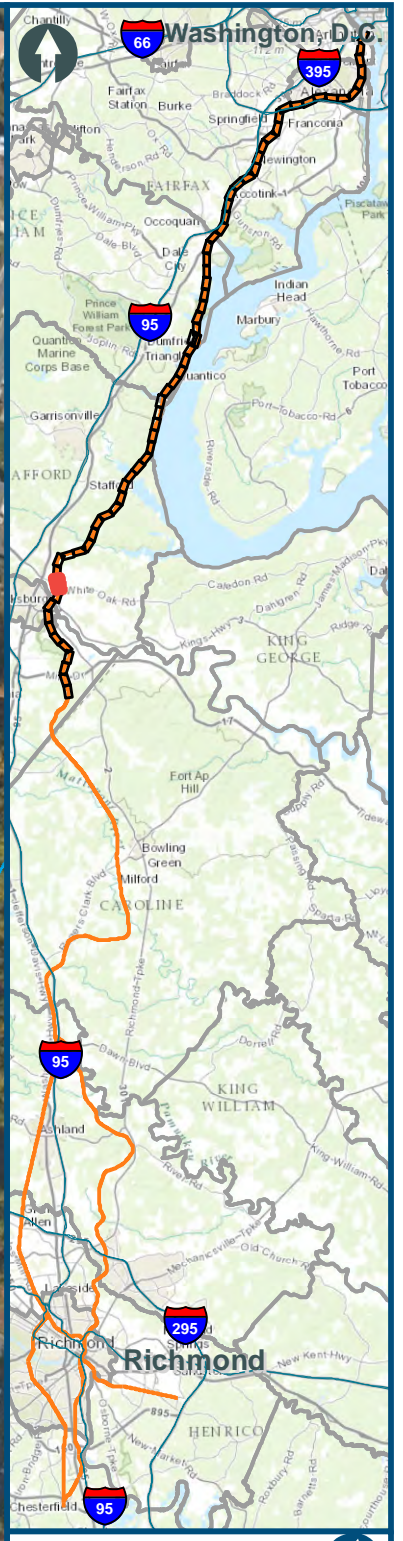
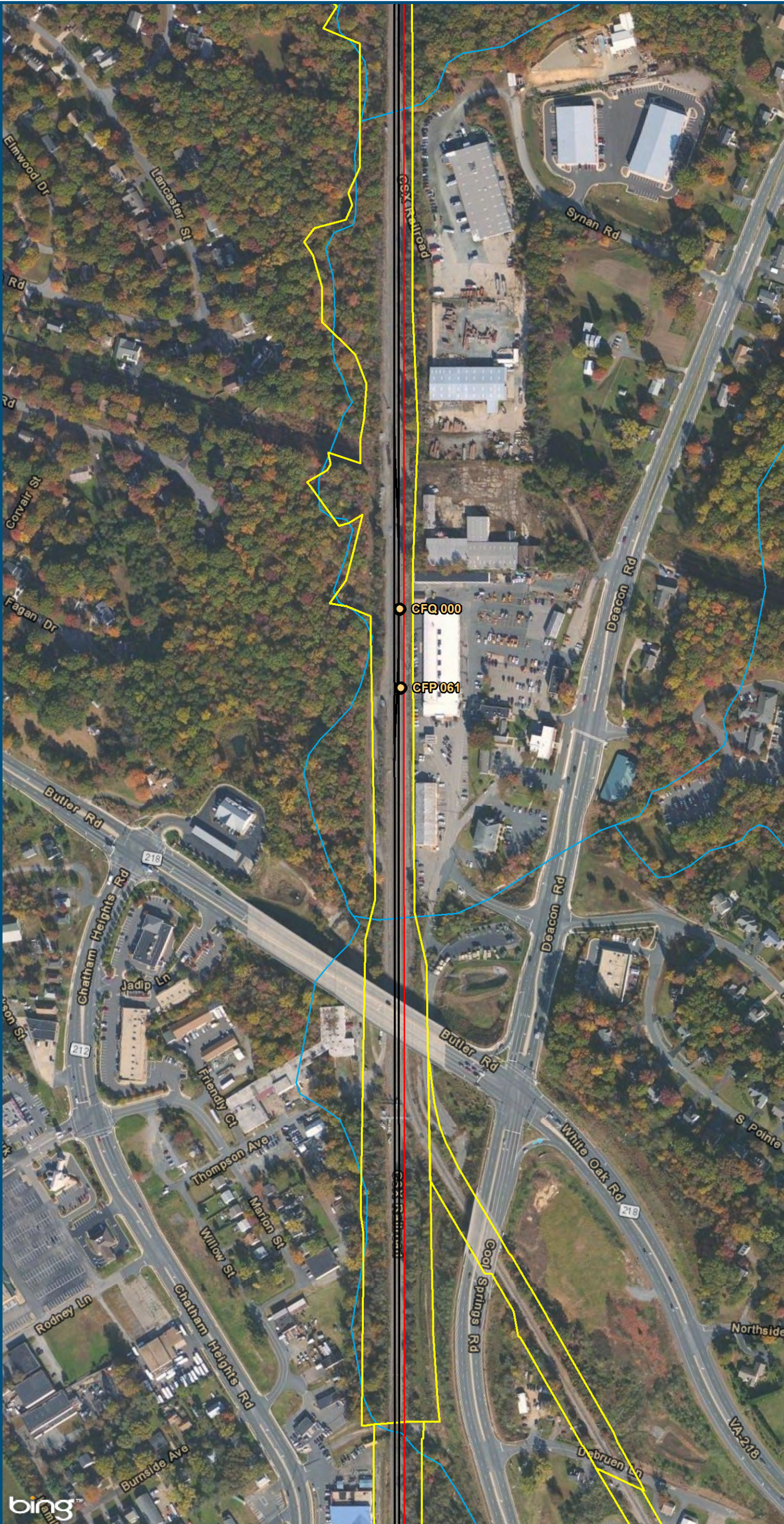
0 150 300
 Feet
 1 inch = 300 feet
 @ 11 x 17 inches
 Projection: Lambert Conformal Conic
 State Plane Virginia North FIPS 4501 Feet
 North American Datum of 1983
 Imagery: Bing Map Aerial

- Legend**
- CSXT Mileposts
 - Existing Track
 - New Track
 - ▭ CSXT Right-of-Way
 - Streams

Figure L-58
Northern Virginia
2006 Report
Alignment Option

\\dlismain\GIS_DATA\GIS\Projects\011545_VA\DeptofRails-PublicTransportation\0239056_RAPS-4\AllDev-Concept\Eng\map_docs\mxd\Alt_Tech_Report\DC2RVA_Cht6_Appendices_NOV_2006\Report_Alignments_11x17.mxd | Last Updated: 11.04.2015

\\dlismain\GIS_DATA\GIS\Projects\011545_VA\DeptofRails-PublicTransportation\0239056_RAPS-4\AIDev-ConceptEng\map_docs\mxd\Alt_Tech_Report\DC2RVA_Ch6_Appendices_NOV_2006\Report_Alignments_11x17.mxd | Last Updated: 11.04.2015



0 150 300
Feet
1 inch = 300 feet
@ 11 x 17 inches
Projection: Lambert Conformal Conic
State Plane Virginia North FIPS 4501 Feet
North American Datum of 1983
Imagery: Bing Map Aerial

- Legend**
- CSXT Mileposts
 - Existing Track
 - New Track
 - ▭ CSXT Right-of-Way
 - Streams

Figure L-59
Northern Virginia
2006 Report
Alignment Option

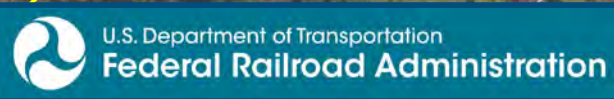
\\dlismain\GIS_DATA\GIS\Projects\011545_VA\DeptofRails-PublicTransportation\0239056_RAPS-4\AIDev-ConceptEng\map_docs\mxd\Alt_Tech_Report\DC2RVA_Chr6_Appendices_NOV_2006\Report_Alignments_11x17.mxd | Last Updated: 11.04.2015



0 150 300
Feet
1 inch = 300 feet
@ 11 x 17 inches
Projection: Lambert Conformal Conic
State Plane Virginia North FIPS 4501 Feet
North American Datum of 1983
Imagery: Bing Map Aerial

- Legend**
- CSXT Mileposts
 - Existing Track
 - New Track
 - CSXT Right-of-Way
 - Streams

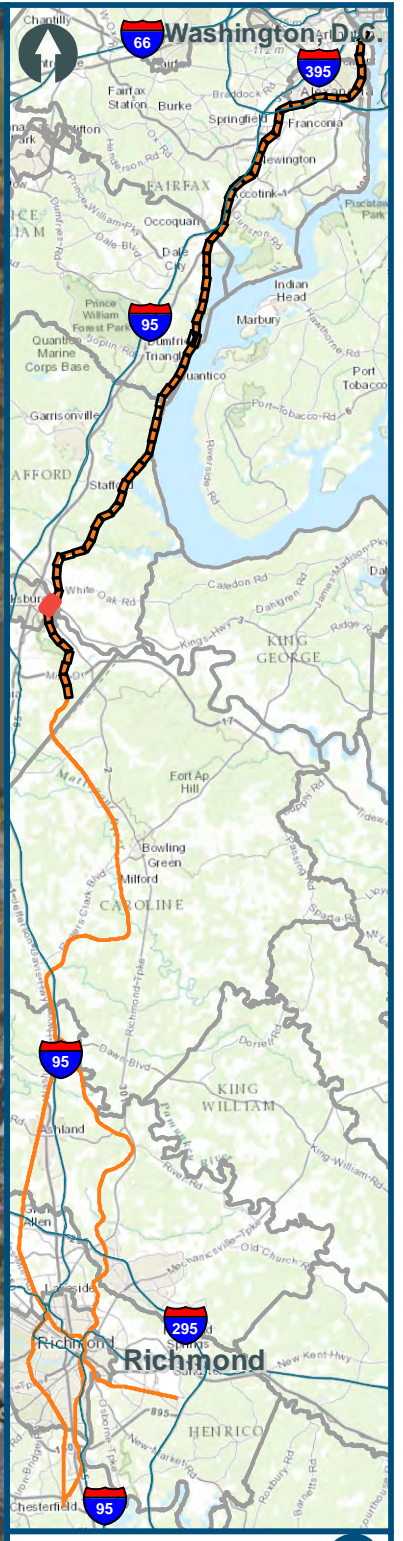
Figure L-60
Northern Virginia
2006 Report
Alignment Option



www.DC2RVArail.com



\\dlismain\GIS_DATA\GIS\Projects\11545_VA\DeptofRails-Public\Transportation\0239056_RAPS-4\AIDev-Concept\Eng\map_docs\mxd\Alt_Tech_Report\DC2RVA_Chr6_Appendices_NOV_2006\Report_Alignments_11x17.mxd | Last Updated: 11.04.2015



0 150 300
Feet
1 inch = 300 feet
@ 11 x 17 inches
Projection: Lambert Conformal Conic
State Plane Virginia North FIPS 4501 Feet
North American Datum of 1983
Imagery: Bing Map Aerial

- Legend**
- Amtrak/VRE Station
 - CSXT Mileposts
 - Existing Track
 - New Track
 - CSXT Right-of-Way
 - Streams

Figure L-61
Northern Virginia
2006 Report
Alignment Option

\\dlmain\GIS_DATA\GIS\Projects\011545_VA\DeptofRails-PublicTransportation\0239056_RAPS-4\AIDev-Concept\Eng\map_docs\mxd\Alt_Tech_Report\DC2RVA_Chr6_Appendices_NOV_2006\Report_Alignments_11x17.mxd | Last Updated: 11.04.2015

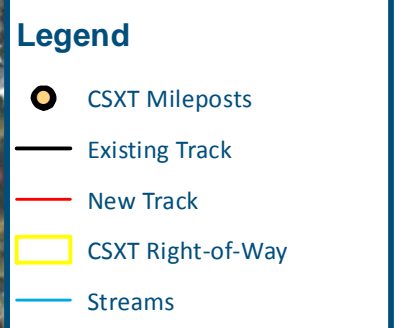
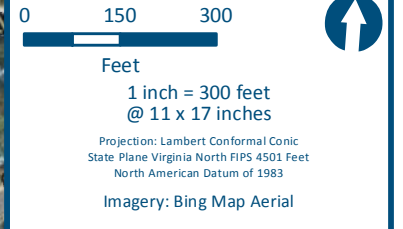
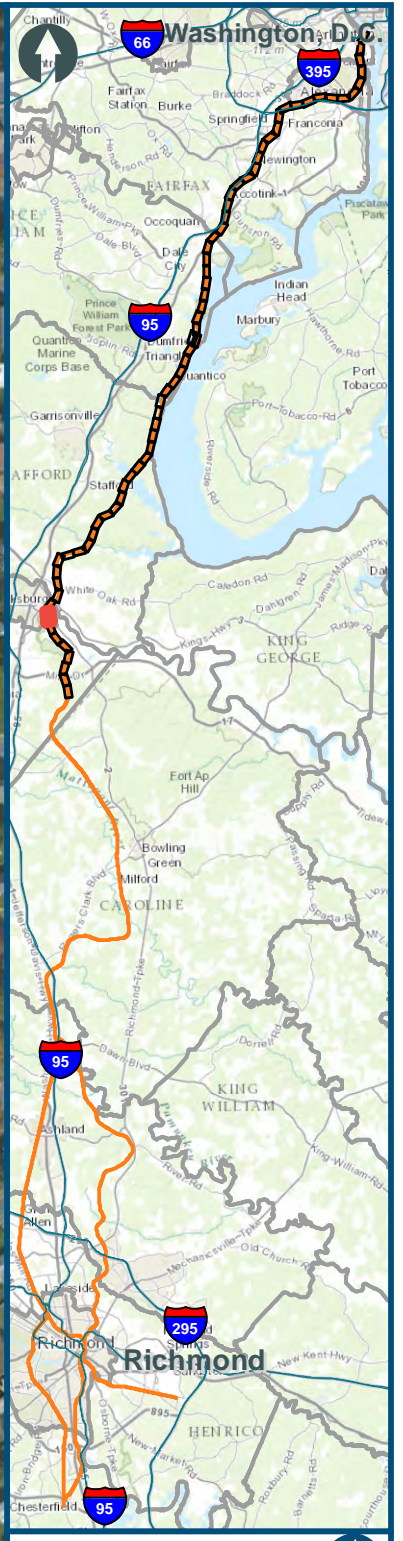
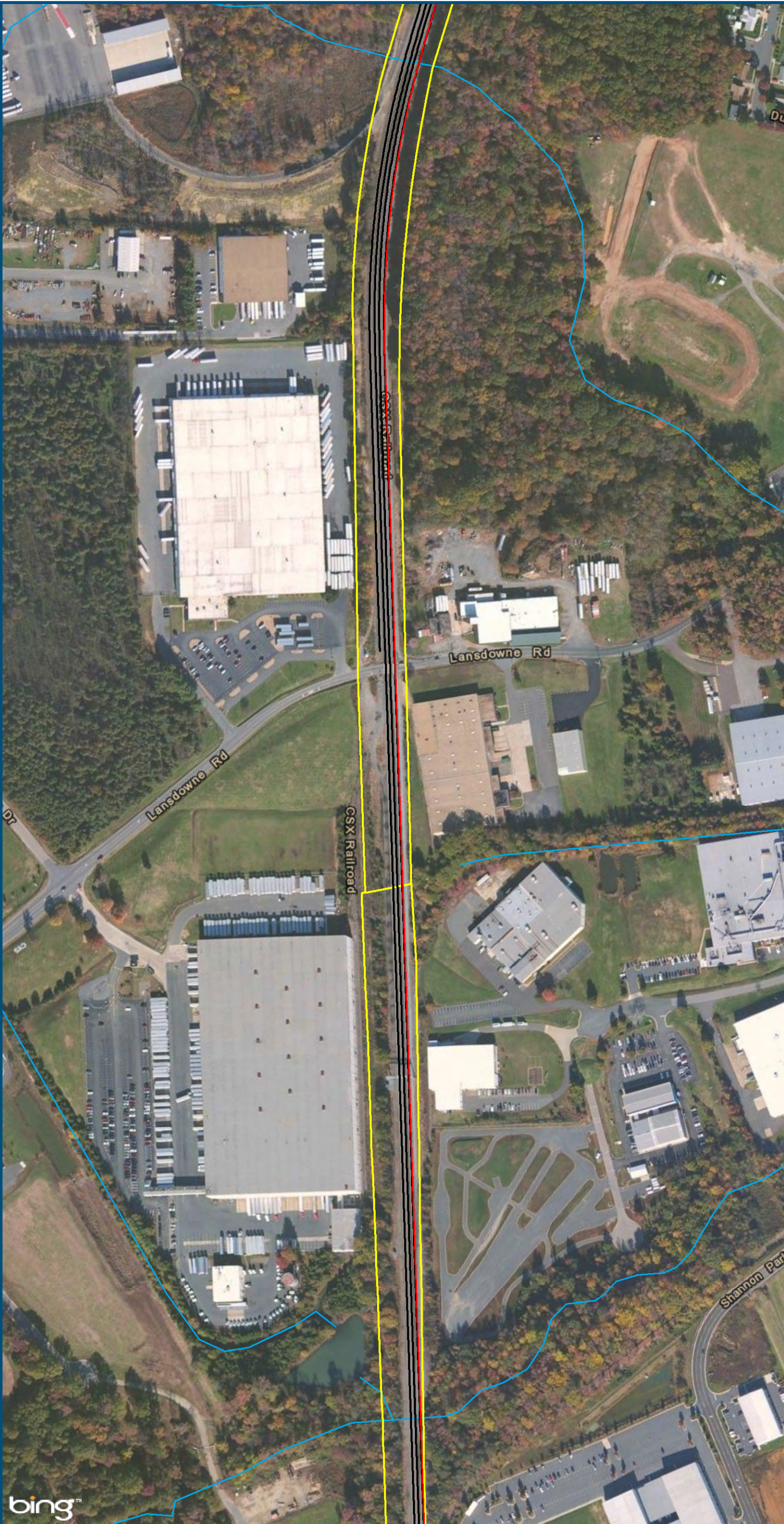


Figure L-62
Northern Virginia
2006 Report
Alignment Option

\\dlismain\GIS_DATA\GIS\Projects\011545_VA\DeptofRails-PublicTransportation\0239056_RAPS-4\AIDev-ConceptEng\map_docs\mxd\Alt_Tech_Report\DC2RVA_Chr6_Appendices_NOV_2006\Report_Alignments_11x17.mxd | Last Updated: 11.04.2015



0 150 300
Feet
1 inch = 300 feet
@ 11 x 17 inches
Projection: Lambert Conformal Conic
State Plane Virginia North FIPS 4501 Feet
North American Datum of 1983
Imagery: Bing Map Aerial

- Legend**
- CSXT Mileposts
 - Existing Track
 - New Track
 - CSXT Right-of-Way
 - Streams

Figure L-63
Northern Virginia
2006 Report
Alignment Option

\\dlismain\GIS_DATA\GIS\Projects\011545_VA\DeptofRails-PublicTransportation\0239056_RAPS-4\AIDev-ConceptEng\map_docs\mxd\Alt_Tech_Report\DC2RVA_Chr6_Appendices_NOV_2006\Report_Alignments_11x17.mxd | Last Updated: 11.04.2015

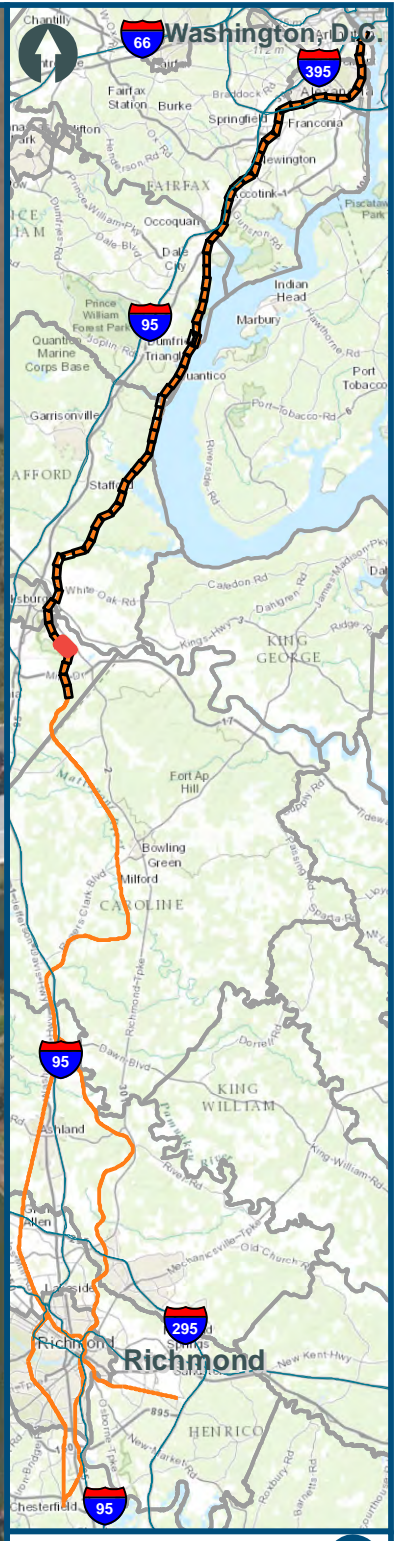


0 150 300
Feet
1 inch = 300 feet
@ 11 x 17 inches
Projection: Lambert Conformal Conic
State Plane Virginia North FIPS 4501 Feet
North American Datum of 1983
Imagery: Bing Map Aerial

- Legend**
- CSXT Mileposts
 - Existing Track
 - New Track
 - CSXT Right-of-Way
 - Streams

Figure L-64
Northern Virginia
2006 Report
Alignment Option

\\dlismain\GIS_DATA\GIS\Projects\011545_VA\DeptofRails-PublicTransportation\0239056_RAPS-4\AIDev-ConceptEng\map_docs\mxd\Alt_Tech_Report\DC2RVA_Chr6_Appendices_NOV_2006\Report_Alignments_11x17.mxd | Last Updated: 11.04.2015

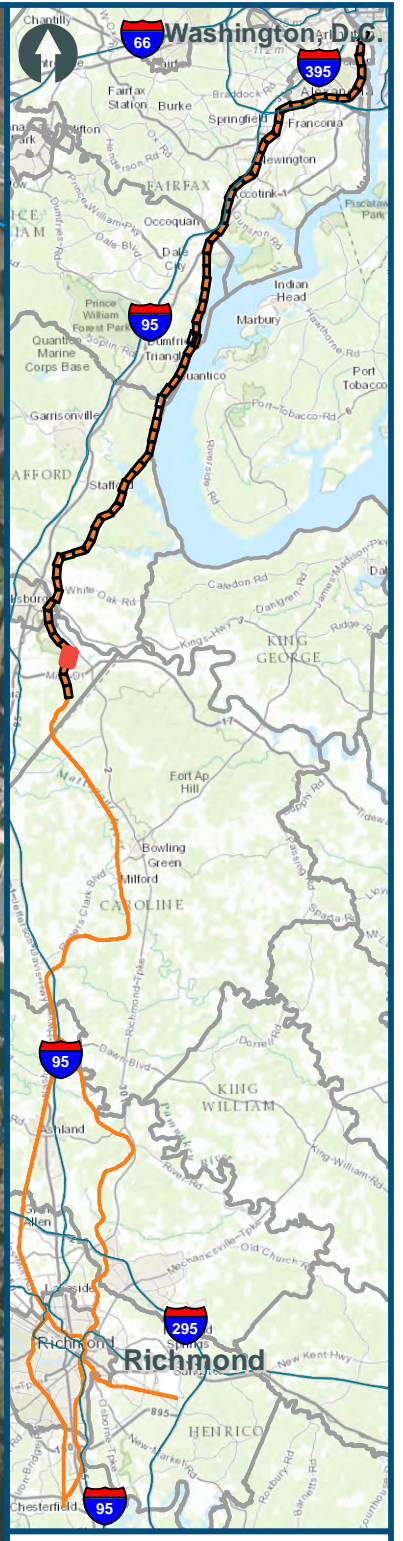


0 150 300
Feet
1 inch = 300 feet
@ 11 x 17 inches
Projection: Lambert Conformal Conic
State Plane Virginia North FIPS 4501 Feet
North American Datum of 1983
Imagery: Bing Map Aerial

- Legend**
- CSXT Mileposts
 - Existing Track
 - New Track
 - CSXT Right-of-Way
 - Streams

Figure L-65
Northern Virginia
2006 Report
Alignment Option

\\dlismain\GIS_DATA\GIS\Projects\011545_VA\DeptofRails-PublicTransportation\0239056_RAPS-4\AIDev-ConceptEng\map_docs\mxd\Alt_Tech_Report\DC2RVA_Chr6_Appendices_NOV_2006\Report_Alignments_11x17.mxd | Last Updated: 11.11.2015

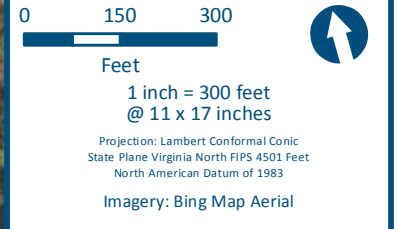
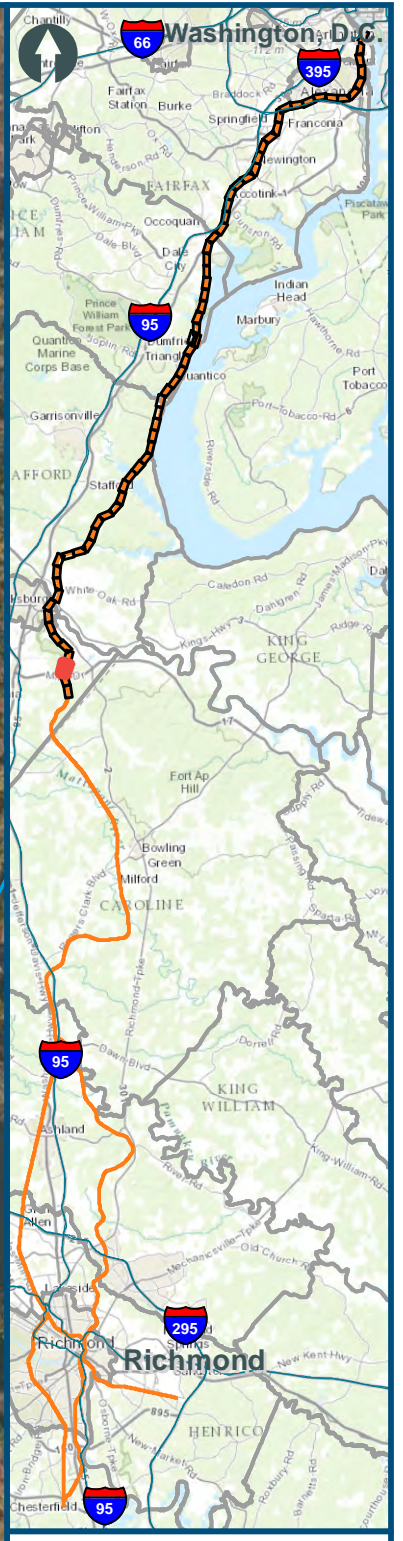


0 150 300
Feet
1 inch = 300 feet
@ 11 x 17 inches
Projection: Lambert Conformal Conic
State Plane Virginia North FIPS 4501 Feet
North American Datum of 1983
Imagery: Bing Map Aerial

- Legend**
- CSXT Mileposts
 - Third Track Under Construction by CSXT
 - Existing Track
 - New Track
 - CSXT Right-of-Way
 - Streams

Figure L-66
Northern Virginia
2006 Report
Alignment Option

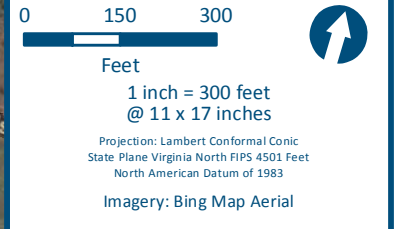
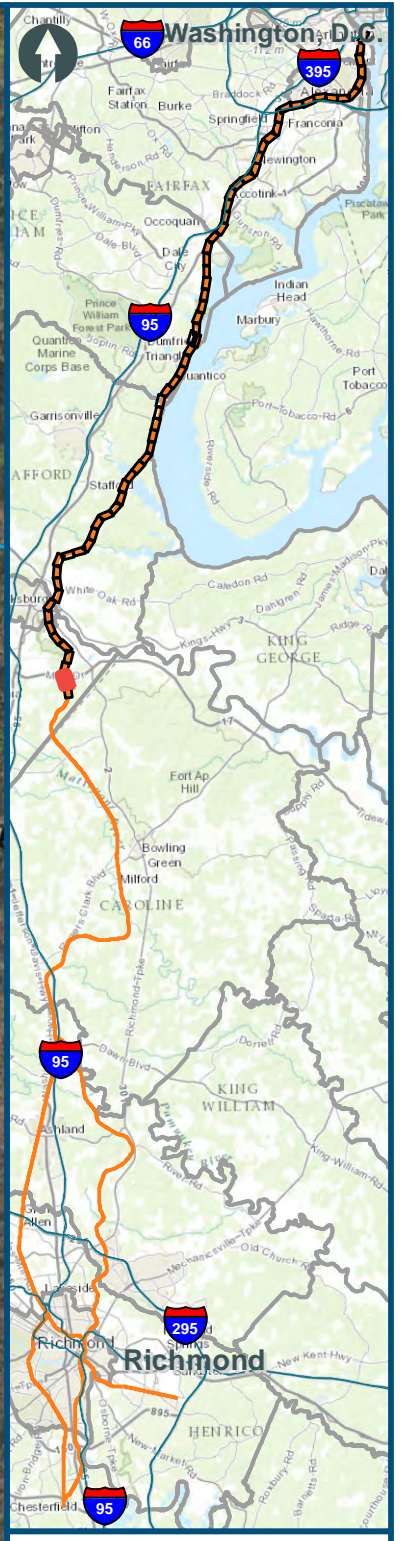
\\dlismain\GIS_DATA\GIS\Projects\011545_VA\DeptofRails-PublicTransportation\0239056_RAPS-4\AIDev-ConceptEng\map_docs\mxd\Alt_Tech_Report\DC2RVA_Chr6_Appendices_NOV_2006\Report_Alignments_11x17.mxd | Last Updated: 11.11.2015



- Legend**
- CSXT Mileposts
 - Third Track Under Construction by CSXT
 - Existing Track
 - New Track
 - CSXT Right-of-Way
 - Streams

Figure L-67
Northern Virginia
2006 Report
Alignment Option

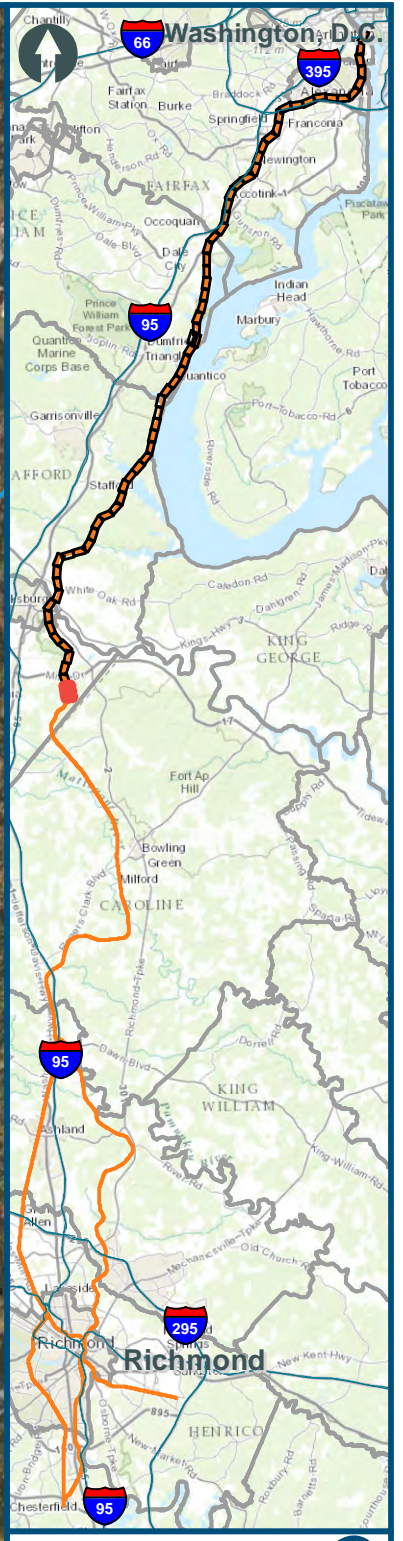
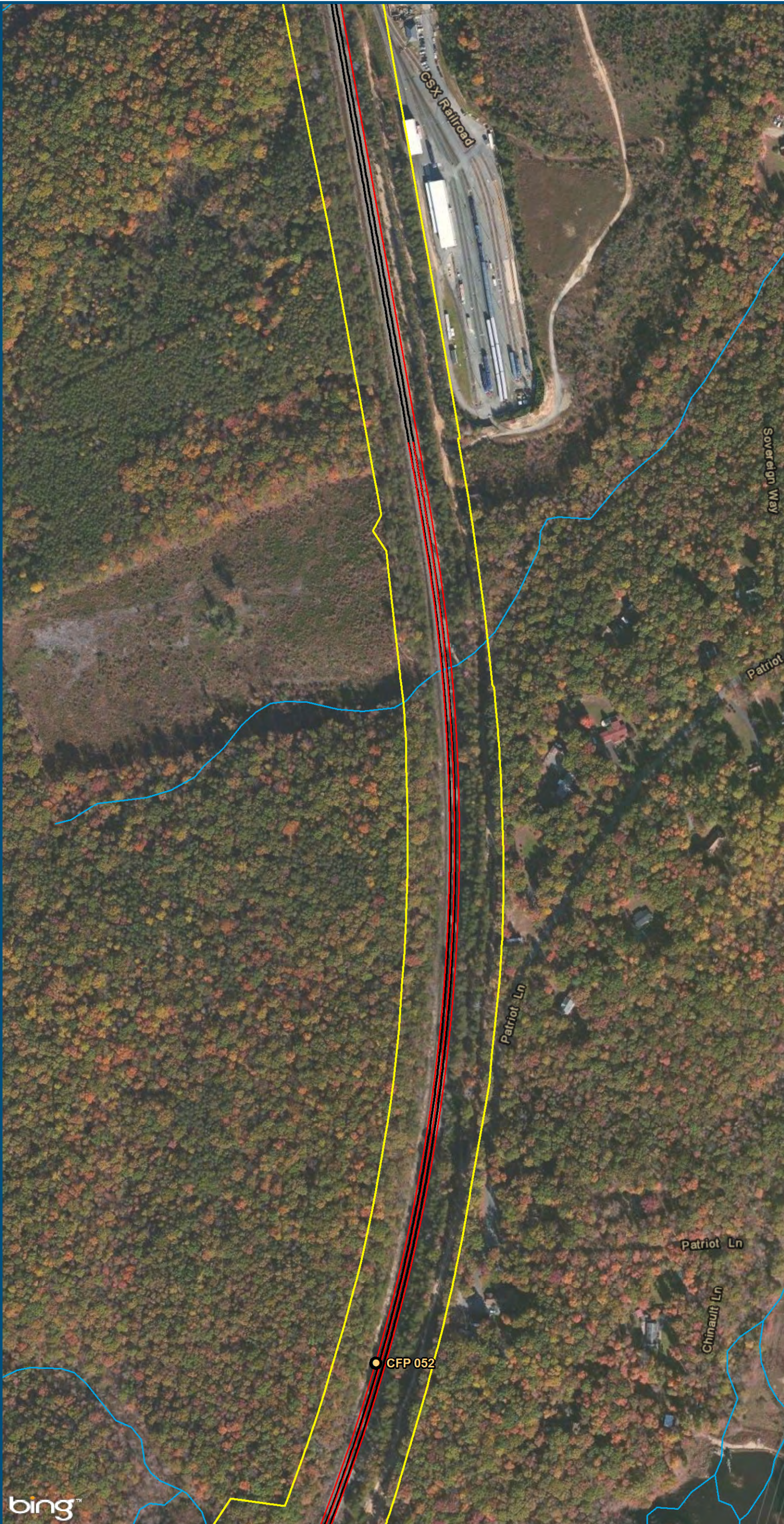
\\slsmain\GIS_DATA\GIS\Projects\011545_VA\DeptofRails-PublicTransportation\0239056_RAPS-4\AIDev-ConceptEng\map_docs\mxd\Alt_Tech_Report\DC2RVA_Chr6_Appendices_NOV_2006\Report_Alignments_11x17.mxd | Last Updated: 11.11.2015



- Legend**
- VRE Station
 - CSXT Mileposts
 - Third Track Under Construction by CSXT
 - Existing Track
 - New Track
 - CSXT Right-of-Way
 - Streams

Figure L-68
Northern Virginia
2006 Report
Alignment Option

\\dlismain\GIS_DATA\GIS\Projects\011545_VA\DeptofRails-PublicTransportation\0239056_RAPS-4\AIDev-ConceptEng\map_docs\mxd\Alt_Tech_Report\DC2RVA_Chr6_Appendices_NOV_2006\Report_Alignments_11x17.mxd | Last Updated: 11.04.2015



0 150 300
Feet
1 inch = 300 feet
@ 11 x 17 inches
Projection: Lambert Conformal Conic
State Plane Virginia North FIPS 4501 Feet
North American Datum of 1983
Imagery: Bing Map Aerial

- Legend**
- CSXT Mileposts
 - Existing Track
 - New Track
 - CSXT Right-of-Way
 - Streams

Figure L-69
Northern Virginia
2006 Report
Alignment Option