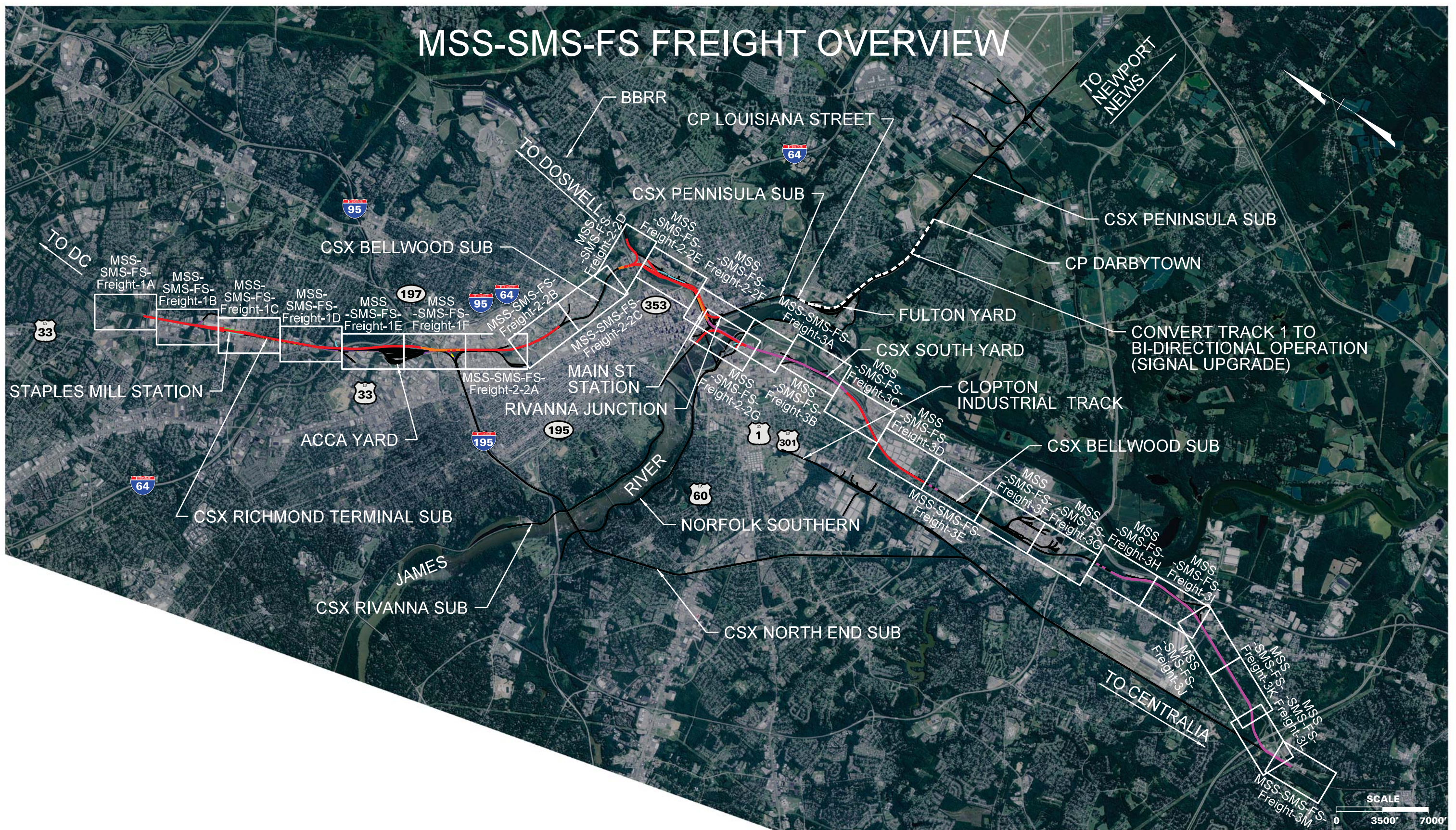


MSS-SMS-FS FREIGHT OVERVIEW



THESE PLANS ARE UNFINISHED AND UNAPPROVED AND ARE NOT TO BE USED FOR ANY TYPE OF CONSTRUCTION OR THE ACQUISITION OF RIGHT OF WAY.

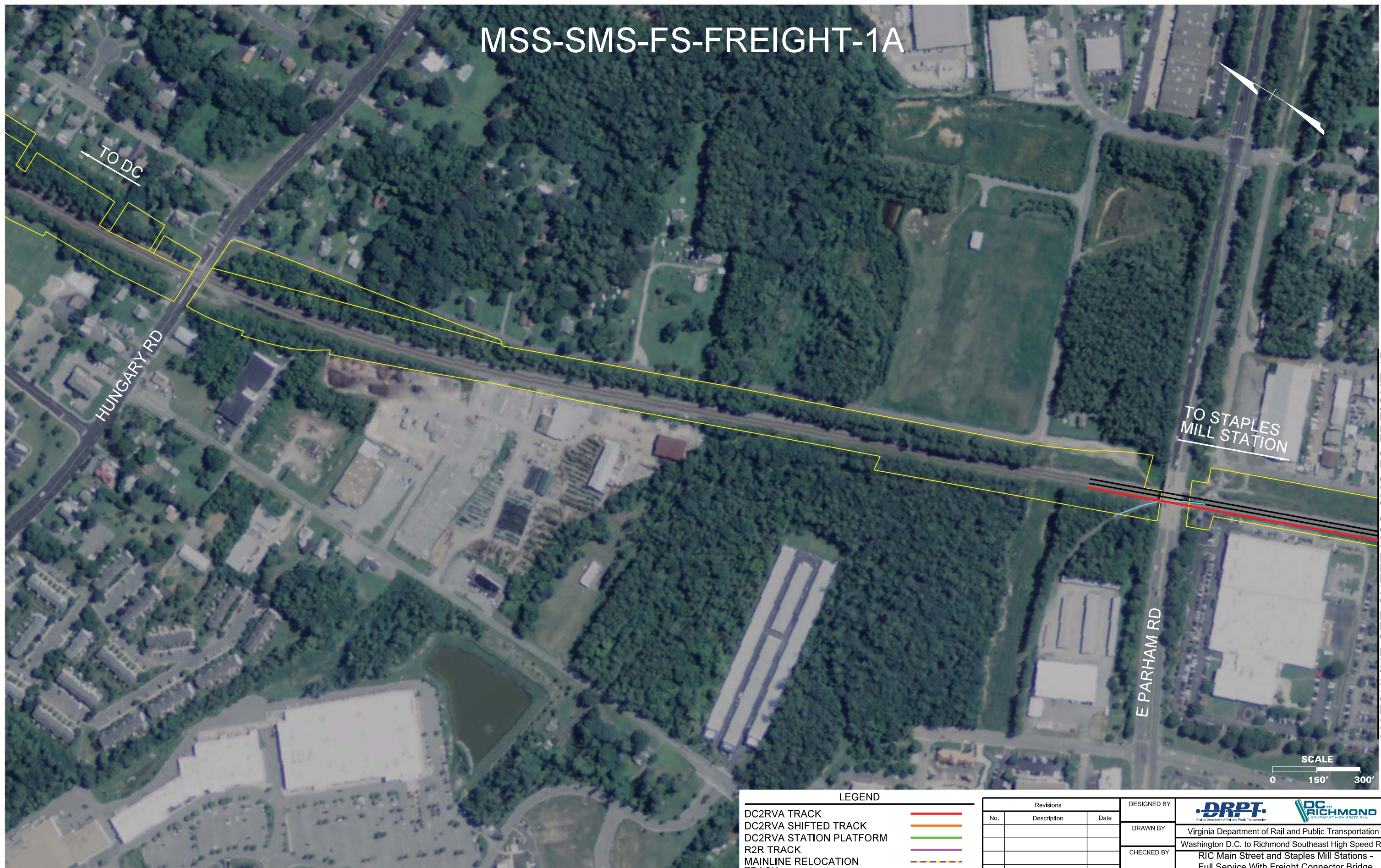
LEGEND

- DC2RVA TRACK —
- DC2RVA SHIFTED TRACK —
- DC2RVA STATION PLATFORM —
- R2R TRACK —
- MAINLINE RELOCATION TRACK —
- RETIRED TRACK —
- EXISTING TRACK —
- EXISTING RW —

Revisions		
No.	Description	Date

DESIGNED BY			
DRAWN BY	Virginia Department of Rail and Public Transportation		
CHECKED BY	Washington D.C. to Richmond Southeast High Speed Rail		
DATE	11/17/2015		
SCALE	As Shown		
PROJECT NO.	DRAWING NO.	SHEET NO.	
	GG	1	

MSS-SMS-FS-FREIGHT-1A



MATCHLINE SEE SHEET MSS-SMS-FS-FREIGHT-1B

LEGEND	
DC2RVA TRACK	
DC2RVA SHIFTED TRACK	
DC2RVA STATION PLATFORM	
R2R TRACK	
MAINLINE RELOCATION TRACK	
RETIRED TRACK	
EXISTING TRACK	
EXISTING R/W	

Revisions		
No.	Description	Date

DESIGNED BY			
DRAWN BY	Virginia Department of Rail and Public Transportation		
CHECKED BY	Washington D.C. to Richmond Southeast High Speed Rail		
DATE	RIC Main Street and Staples Mill Stations - Full Service With Freight Connector Bridge (MSS-SMS-FS-Freight) Alignment Option Mapbook		
SCALE	PROJECT NO.	DRAWING NO.	SHEET NO.
As Shown		GG	2

THESE PLANS ARE UNFINISHED AND UNAPPROVED AND ARE NOT TO BE USED FOR ANY TYPE OF CONSTRUCTION OR THE ACQUISITION OF RIGHT OF WAY.

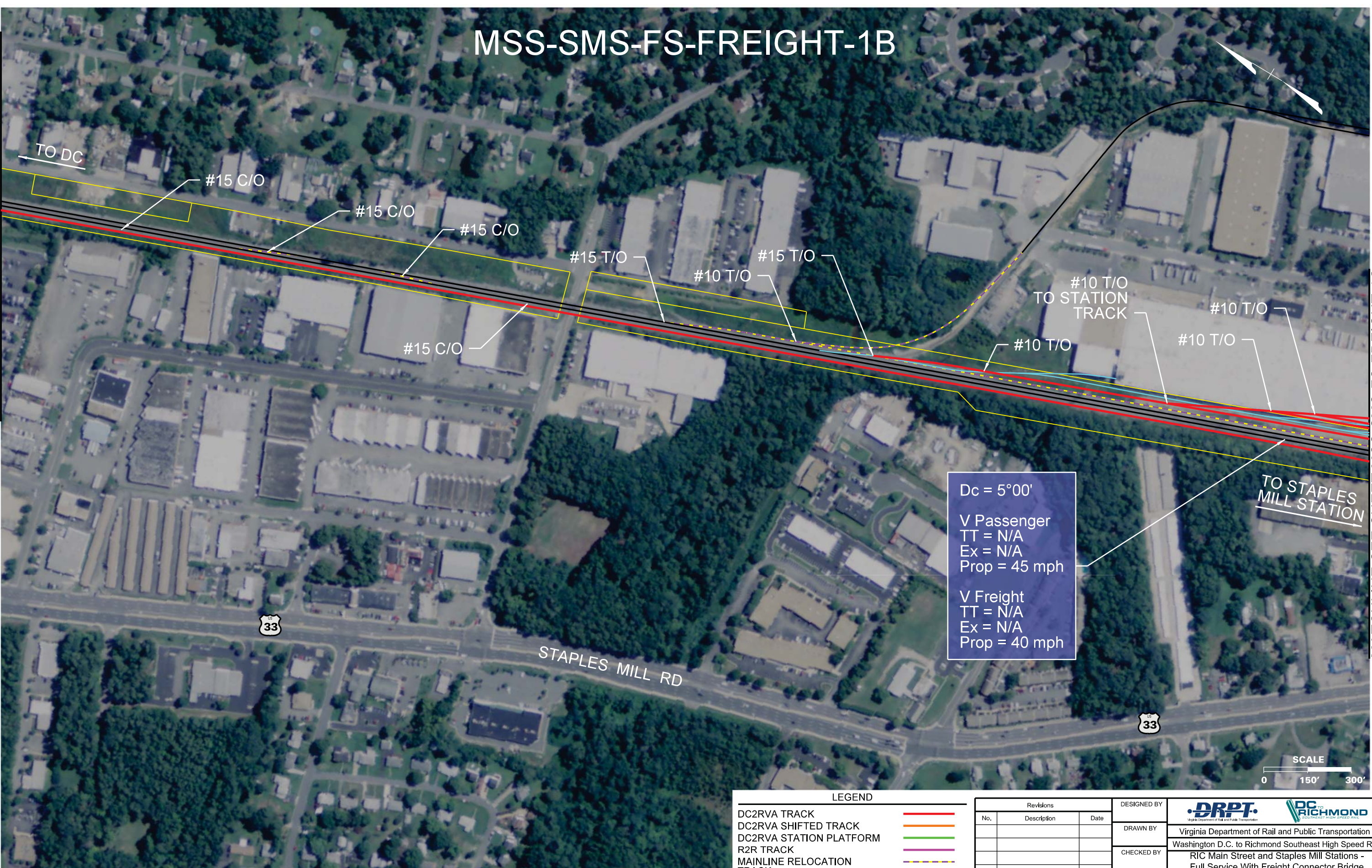
Plotted by: cpowell 11/13/2015 4:27:50 PM
 MSSM-FS-FC-01A.dgn

STAPLES MILL RD

MSS-SMS-FS-FREIGHT-1B

MATCHLINE SEE SHEET MSS-SMS-FS-FREIGHT-1A

MATCHLINE SEE SHEET MSS-SMS-FS-FREIGHT-1C



Dc = 5°00'
 V Passenger
 TT = N/A
 Ex = N/A
 Prop = 45 mph

 V Freight
 TT = N/A
 Ex = N/A
 Prop = 40 mph



LEGEND	
DC2RVA TRACK	—
DC2RVA SHIFTED TRACK	—
DC2RVA STATION PLATFORM	—
R2R TRACK	—
MAINLINE RELOCATION TRACK	- - -
RETIRED TRACK	—
EXISTING TRACK	—
EXISTING RW	—

Revisions		
No.	Description	Date

DESIGNED BY			
DRAWN BY	Virginia Department of Rail and Public Transportation		
CHECKED BY	Washington D.C. to Richmond Southeast High Speed Rail		
DATE	RIC Main Street and Staples Mill Stations - Full Service With Freight Connector Bridge (MSS-SMS-FS-Freight) Alignment Option Mapbook		
SCALE	PROJECT NO.	DRAWING NO.	SHEET NO.
As Shown		GG	3

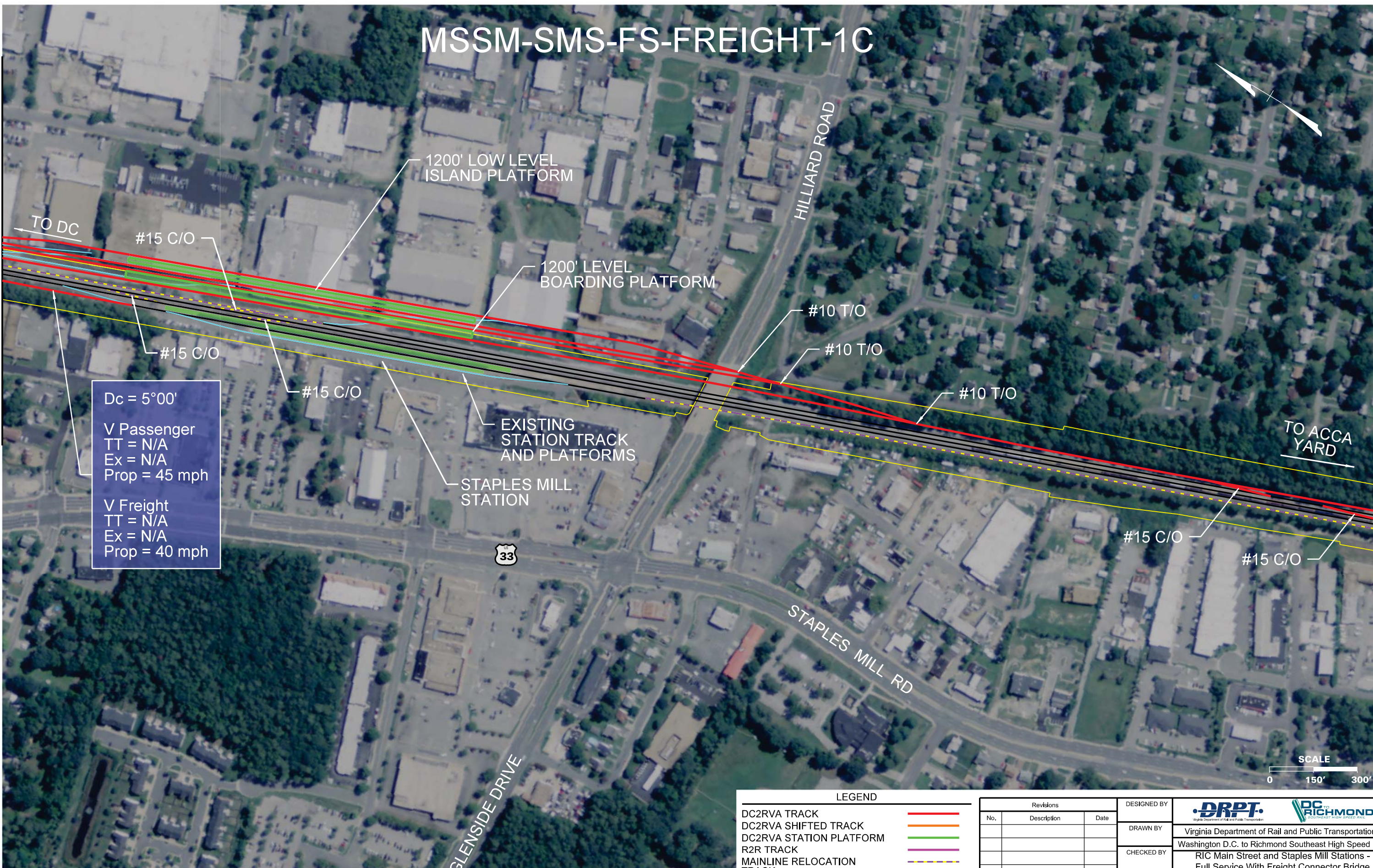
THESE PLANS ARE UNFINISHED AND UNAPPROVED AND ARE NOT TO BE USED FOR ANY TYPE OF CONSTRUCTION OR THE ACQUISITION OF RIGHT OF WAY.

Plotted by: cpowell 11/13/2015 4:27:55 PM
 MSSM-FS-FC-01B.dgn

MSSM-SMS-FS-FREIGHT-1C

MATCHLINE SEE SHEET MSS-SMS-FS-FREIGHT-1B

MATCHLINE SEE SHEET MSS-SMS-FS-FREIGHT-1D



Dc = 5°00'
 V Passenger
 TT = N/A
 Ex = N/A
 Prop = 45 mph

 V Freight
 TT = N/A
 Ex = N/A
 Prop = 40 mph

LEGEND	
DC2RVA TRACK	—
DC2RVA SHIFTED TRACK	—
DC2RVA STATION PLATFORM	—
R2R TRACK	—
MAINLINE RELOCATION TRACK	—
RETIRED TRACK	—
EXISTING TRACK	—
EXISTING RW	—

Revisions		
No.	Description	Date

DESIGNED BY			
DRAWN BY	Virginia Department of Rail and Public Transportation		
CHECKED BY	Washington D.C. to Richmond Southeast High Speed Rail		
DATE	RIC Main Street and Staples Mill Stations - Full Service With Freight Connector Bridge (MSS-SMS-FS-Freight) Alignment Option Mapbook		
SCALE	PROJECT NO.	DRAWING NO.	SHEET NO.
As Shown		GG	4

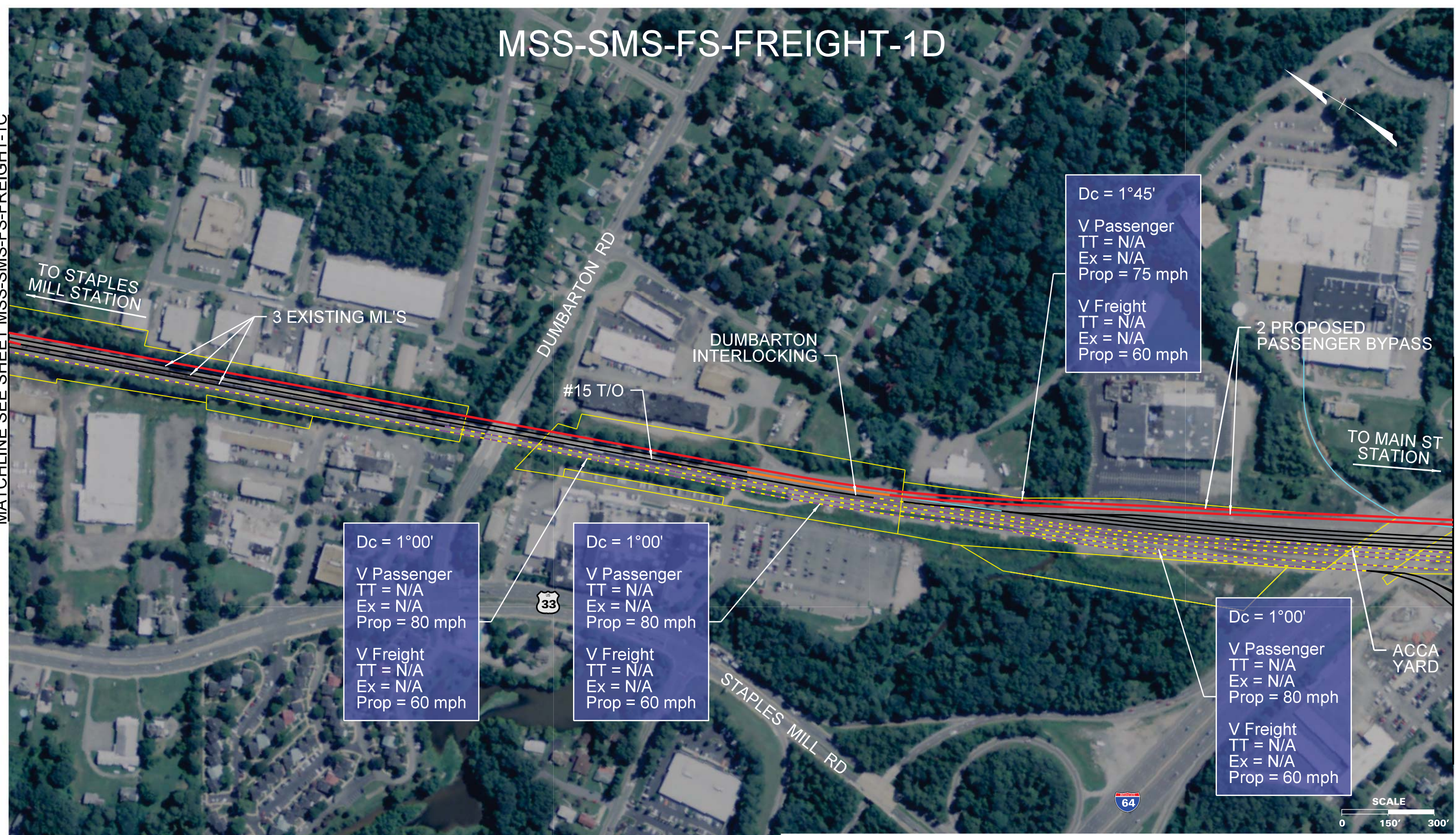
THESE PLANS ARE UNFINISHED AND UNAPPROVED AND ARE NOT TO BE USED FOR ANY TYPE OF CONSTRUCTION OR THE ACQUISITION OF RIGHT OF WAY.

Plotted by cpowell 11/13/2015 4:28:00 PM
 MSSM-FS-FC-DC.dgn

MSS-SMS-FS-FREIGHT-1D

MATCHLINE SEE SHEET MSS-SMS-FS-FREIGHT-1C

MATCHLINE SEE SHEET MSS-SMS-FS-FREIGHT-1E



Dc = 1°00'
 V Passenger
 TT = N/A
 Ex = N/A
 Prop = 80 mph

 V Freight
 TT = N/A
 Ex = N/A
 Prop = 60 mph

Dc = 1°00'
 V Passenger
 TT = N/A
 Ex = N/A
 Prop = 80 mph

 V Freight
 TT = N/A
 Ex = N/A
 Prop = 60 mph

Dc = 1°45'
 V Passenger
 TT = N/A
 Ex = N/A
 Prop = 75 mph

 V Freight
 TT = N/A
 Ex = N/A
 Prop = 60 mph

Dc = 1°00'
 V Passenger
 TT = N/A
 Ex = N/A
 Prop = 80 mph

 V Freight
 TT = N/A
 Ex = N/A
 Prop = 60 mph

LEGEND			Revisions			DESIGNED BY		
No.	Description	Date	No.	Description	Date	DRPT Virginia Department of Rail and Public Transportation		
—	DC2RVA TRACK					DRAWN BY		
—	DC2RVA SHIFTED TRACK					CHECKED BY		
—	DC2RVA STATION PLATFORM					DATE		
—	R2R TRACK					SCALE		
—	MAINLINE RELOCATION TRACK					PROJECT NO.		
—	RETIRED TRACK					DRAWING NO.		
—	EXISTING TRACK					SHEET NO.		
—	EXISTING R/W					5		

THESE PLANS ARE UNFINISHED AND UNAPPROVED AND ARE NOT TO BE USED FOR ANY TYPE OF CONSTRUCTION OR THE ACQUISITION OF RIGHT OF WAY.

Plotted by: cpowell 11/13/2015 4:28:05 PM MSSM-FS-FC-010.dgn

MSS-SMS-FS-FREIGHT-1E

Dc = 1°00'
 V Passenger
 TT = N/A
 Ex = N/A
 Prop = 80 mph

 V Freight
 TT = N/A
 Ex = N/A
 Prop = 60 mph

Dc = 1°00'
 V Passenger
 TT = N/A
 Ex = N/A
 Prop = 80 mph

 V Freight
 TT = N/A
 Ex = N/A
 Prop = 60 mph

Dc = 3°00'
 V Passenger
 TT = N/A
 Ex = N/A
 Prop = 60 mph

 V Freight
 TT = N/A
 Ex = N/A
 Prop = 55 mph

Dc = 1°00'
 V Passenger
 TT = N/A
 Ex = N/A
 Prop = 80 mph

 V Freight
 TT = N/A
 Ex = N/A
 Prop = 60 mph

MATCHLINE SEE SHEET MSS-SMS-FS-FREIGHT-1D

MATCHLINE SEE SHEET MSS-SMS-FS-FREIGHT-1F

TO STAPLES MILL STATION

2 PROPOSED PASSENGER BYPASS

ACCA YARD

CSX BIDS / TRANSLOAD FACILITY

TO MAIN ST STATION

BRYAN PARK MAINTENANCE FACILITY



THESE PLANS ARE UNFINISHED AND UNAPPROVED AND ARE NOT TO BE USED FOR ANY TYPE OF CONSTRUCTION OR THE ACQUISITION OF RIGHT OF WAY.

LEGEND	
DC2RVA TRACK	
DC2RVA SHIFTED TRACK	
DC2RVA STATION PLATFORM	
R2R TRACK	
MAINLINE RELOCATION TRACK	
RETIRED TRACK	
EXISTING TRACK	
EXISTING RW	

Revisions		
No.	Description	Date

DESIGNED BY	
DRAWN BY	Virginia Department of Rail and Public Transportation
CHECKED BY	Washington D.C. to Richmond Southeast High Speed Rail
DATE	11/17/2015
SCALE	As Shown
PROJECT NO.	DRAWING NO. GG
	SHEET NO. 6

Plotted by cpowell 11/13/2015 4:26:00 PM MSSM-FS-FC-OLE.dgn

MSS-SMS-FS-FREIGHT-1F

MATCHLINE SEE SHEET MSS-SMS-FS-FREIGHT-1E

MATCHLINE SEE SHEET MSS-SMS-FS-FREIGHT-2-2A

Dc = 1°00'
 V Passenger
 TT = N/A
 Ex = N/A
 Prop = 80 mph
 V Freight
 TT = N/A
 Ex = N/A
 Prop = 60 mph

Dc = 1°00'
 V Passenger
 TT = N/A
 Ex = N/A
 Prop = 80 mph
 V Freight
 TT = N/A
 Ex = N/A
 Prop = 60 mph

Dc = 6°15'
 V Passenger
 TT = N/A
 Ex = N/A
 Prop = 30 mph
 V Freight
 TT = N/A
 Ex = N/A
 Prop = 30 mph

Dc = 5°00'
 V Passenger
 TT = N/A
 Ex = N/A
 Prop = 45 mph
 V Freight
 TT = N/A
 Ex = N/A
 Prop = 40 mph

Dc = 7°30'
 V Passenger
 TT = N/A
 Ex = N/A
 Prop = 20 mph
 V Freight
 TT = N/A
 Ex = N/A
 Prop = 20 mph

Dc = 4°45'
 V Passenger
 TT = N/A
 Ex = N/A
 Prop = 30 mph
 V Freight
 TT = N/A
 Ex = N/A
 Prop = 30 mph

Dc = 7°00'
 V Passenger
 TT = N/A
 Ex = N/A
 Prop = 20 mph
 V Freight
 TT = N/A
 Ex = N/A
 Prop = 20 mph

Dc = 7°30'
 V Passenger
 TT = N/A
 Ex = N/A
 Prop = 20 mph
 V Freight
 TT = N/A
 Ex = N/A
 Prop = 20 mph

Dc = 2°00'
 V Passenger
 TT = N/A
 Ex = N/A
 Prop = 70 mph
 V Freight
 TT = N/A
 Ex = N/A
 Prop = 60 mph

THESE PLANS ARE UNFINISHED AND UNAPPROVED AND ARE NOT TO BE USED FOR ANY TYPE OF CONSTRUCTION OR THE ACQUISITION OF RIGHT OF WAY.

LEGEND	
DC2RVA TRACK	—
DC2RVA SHIFTED TRACK	—
DC2RVA STATION PLATFORM	—
R2R TRACK	—
MAINLINE RELOCATION TRACK	- - -
RETIRED TRACK	—
EXISTING TRACK	—
EXISTING RW	—

Revisions		
No.	Description	Date

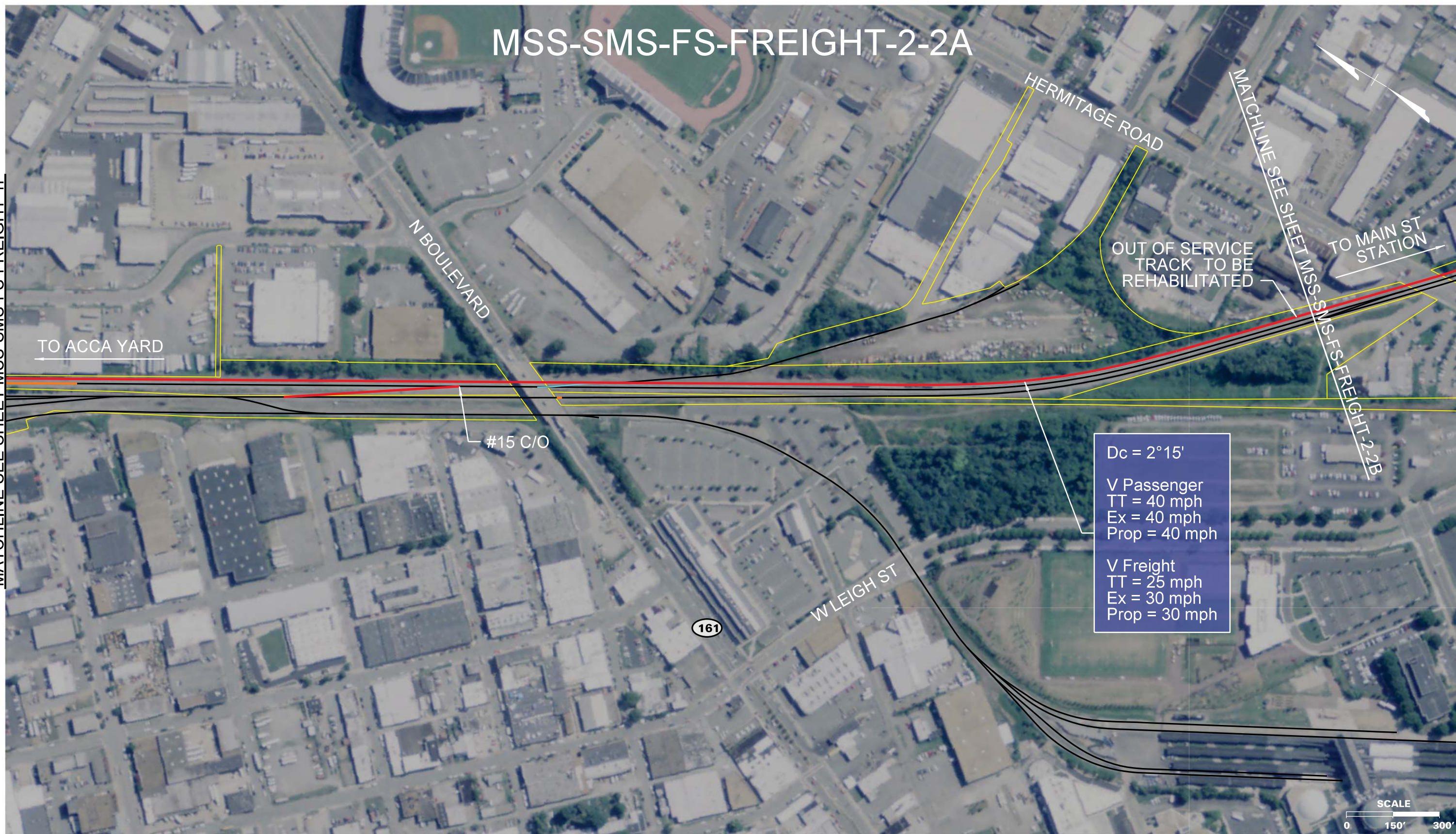
DESIGNED BY			
DRAWN BY	Virginia Department of Rail and Public Transportation		
CHECKED BY	Washington D.C. to Richmond Southeast High Speed Rail		
DATE	11/17/2015		
SCALE	As Shown		
PROJECT NO.	DRAWING NO.	SHEET NO.	
	GG	7	



Plotted by cpowell 11/13/2015 4:28:55 PM MSSM-FS-FC-DIF.dgn

MSS-SMS-FS-FREIGHT-2-2A

MATCHLINE SEE SHEET MSS-SMS-FS-FREIGHT-1F



TO ACCA YARD

N BOULEVARD

HERMITAGE ROAD

OUT OF SERVICE TRACK TO BE REHABILITATED

MATCHLINE SEE SHEET MSS-SMS-FS-FREIGHT-2-2B

TO MAIN ST STATION

#15 C/O

Dc = 2° 15'
 V Passenger
 TT = 40 mph
 Ex = 40 mph
 Prop = 40 mph
 V Freight
 TT = 25 mph
 Ex = 30 mph
 Prop = 30 mph

W LEIGH ST

161

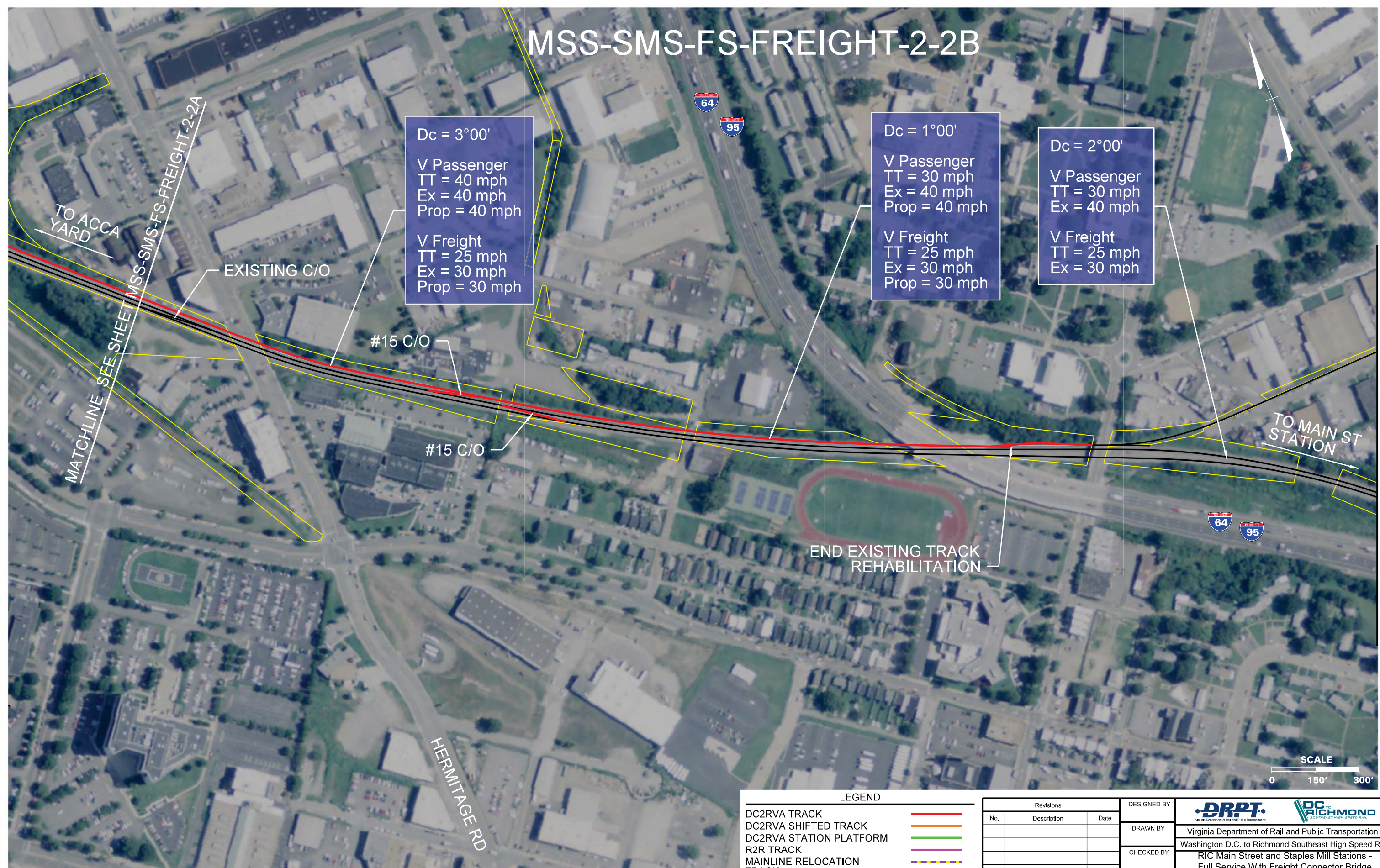
SCALE
 0 150' 300'

LEGEND			Revisions			DESIGNED BY		
No.	Description	Date	No.	Description	Date	No.	Description	Date
	DC2RVA TRACK							
	DC2RVA SHIFTED TRACK							
	DC2RVA STATION PLATFORM							
	R2R TRACK							
	MAINLINE RELOCATION TRACK							
	RETIRED TRACK							
	EXISTING TRACK							
	EXISTING RW							

DRAWN BY	DRPT	DRPT RICHMOND
CHECKED BY	Virginia Department of Rail and Public Transportation	Virginia Department of Rail and Public Transportation
DATE	11/17/2015	Washington D.C. to Richmond Southeast High Speed Rail
SCALE	As Shown	RIC Main Street and Staples Mill Stations - Full Service With Freight Connector Bridge (MSS-SMS-FS-Freight) Alignment Option Mapbook
PROJECT NO.	DRAWING NO.	SHEET NO.
	GG	8

THESE PLANS ARE UNFINISHED AND UNAPPROVED AND ARE NOT TO BE USED FOR ANY TYPE OF CONSTRUCTION OR THE ACQUISITION OF RIGHT OF WAY.

MSS-SMS-FS-FREIGHT-2-2B



Dc = 3°00'
 V Passenger
 TT = 40 mph
 Ex = 40 mph
 Prop = 40 mph
 V Freight
 TT = 25 mph
 Ex = 30 mph
 Prop = 30 mph

Dc = 1°00'
 V Passenger
 TT = 30 mph
 Ex = 40 mph
 Prop = 40 mph
 V Freight
 TT = 25 mph
 Ex = 30 mph
 Prop = 30 mph

Dc = 2°00'
 V Passenger
 TT = 30 mph
 Ex = 40 mph
 V Freight
 TT = 25 mph
 Ex = 30 mph

LEGEND

DC2RVA TRACK	
DC2RVA SHIFTED TRACK	
DC2RVA STATION PLATFORM	
R2R TRACK	
MAINLINE RELOCATION TRACK	
RETIRED TRACK	
EXISTING TRACK	
EXISTING RW	

Revisions		
No.	Description	Date

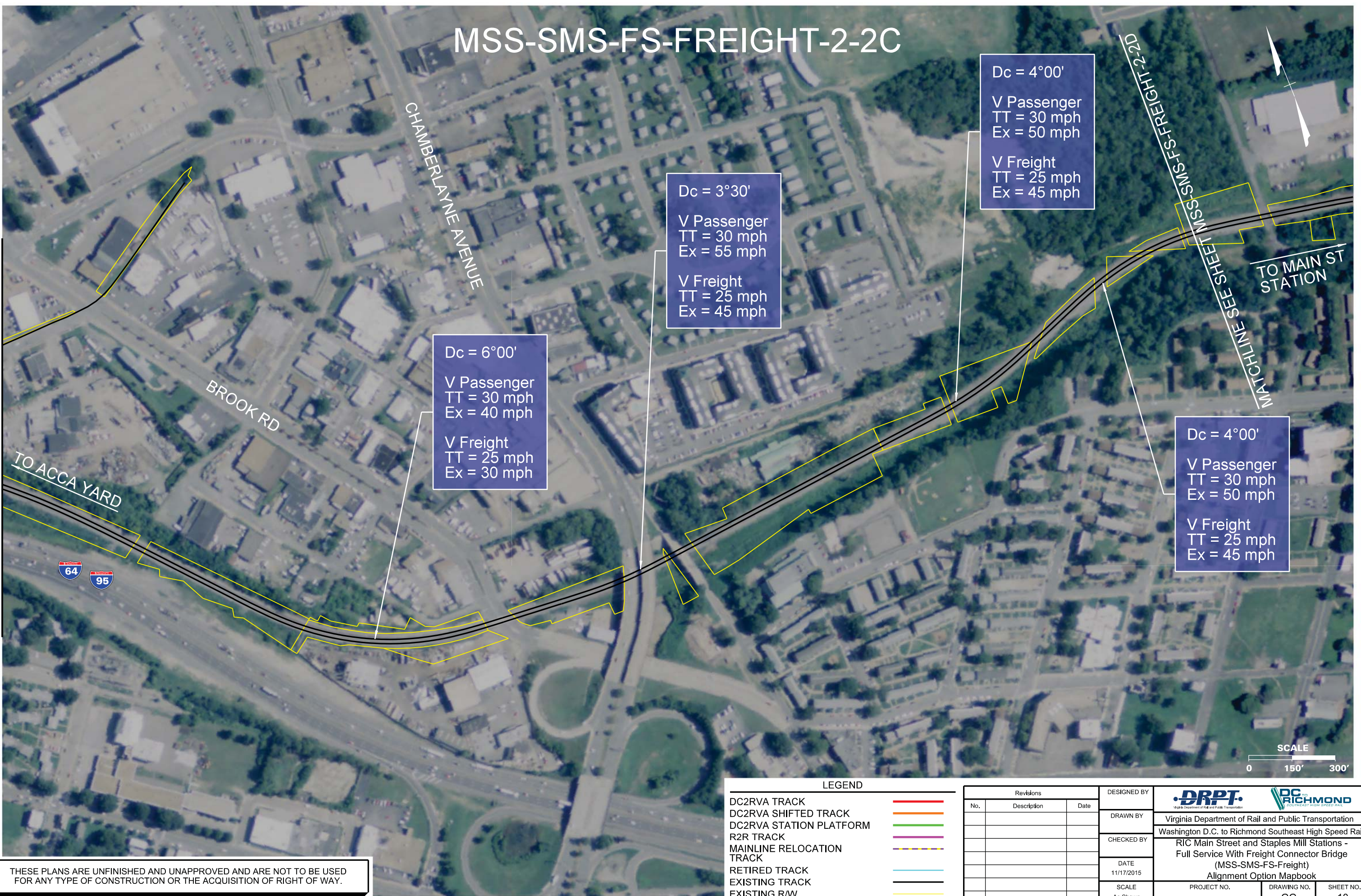
DESIGNED BY			
DRAWN BY	Virginia Department of Rail and Public Transportation		
CHECKED BY	Washington D.C. to Richmond Southeast High Speed Rail		
DATE	11/17/2015		
SCALE	As Shown		
PROJECT NO.	DRAWING NO.	SHEET NO.	
	GG	9	

THESE PLANS ARE UNFINISHED AND UNAPPROVED AND ARE NOT TO BE USED FOR ANY TYPE OF CONSTRUCTION OR THE ACQUISITION OF RIGHT OF WAY.

Printed by cpowell 11/13/2015 4:28:27 PM
 MSSM-FS-FC-02-2B.dgn

MSS-SMS-FS-FREIGHT-2-2C

MATCHLINE SEE SHEET MSS-SMS-FS-FREIGHT-2-2B



Dc = 6°00'
 V Passenger
 TT = 30 mph
 Ex = 40 mph
 V Freight
 TT = 25 mph
 Ex = 30 mph

Dc = 3°30'
 V Passenger
 TT = 30 mph
 Ex = 55 mph
 V Freight
 TT = 25 mph
 Ex = 45 mph

Dc = 4°00'
 V Passenger
 TT = 30 mph
 Ex = 50 mph
 V Freight
 TT = 25 mph
 Ex = 45 mph

Dc = 4°00'
 V Passenger
 TT = 30 mph
 Ex = 50 mph
 V Freight
 TT = 25 mph
 Ex = 45 mph

TO ACCA YARD



CHAMBERLAYNE AVENUE

BROOK RD

MATCHLINE SEE SHEET MSS-SMS-FS-FREIGHT-2-2D

TO MAIN ST STATION



LEGEND

- DC2RVA TRACK —
- DC2RVA SHIFTED TRACK —
- DC2RVA STATION PLATFORM —
- R2R TRACK —
- MAINLINE RELOCATION TRACK —
- RETIRED TRACK —
- EXISTING TRACK —
- EXISTING RW —

Revisions		
No.	Description	Date

DESIGNED BY
DRAWN BY
CHECKED BY
DATE
SCALE

Virginia Department of Rail and Public Transportation

DC RICHMOND
METRO RAIL

Washington D.C. to Richmond Southeast High Speed Rail

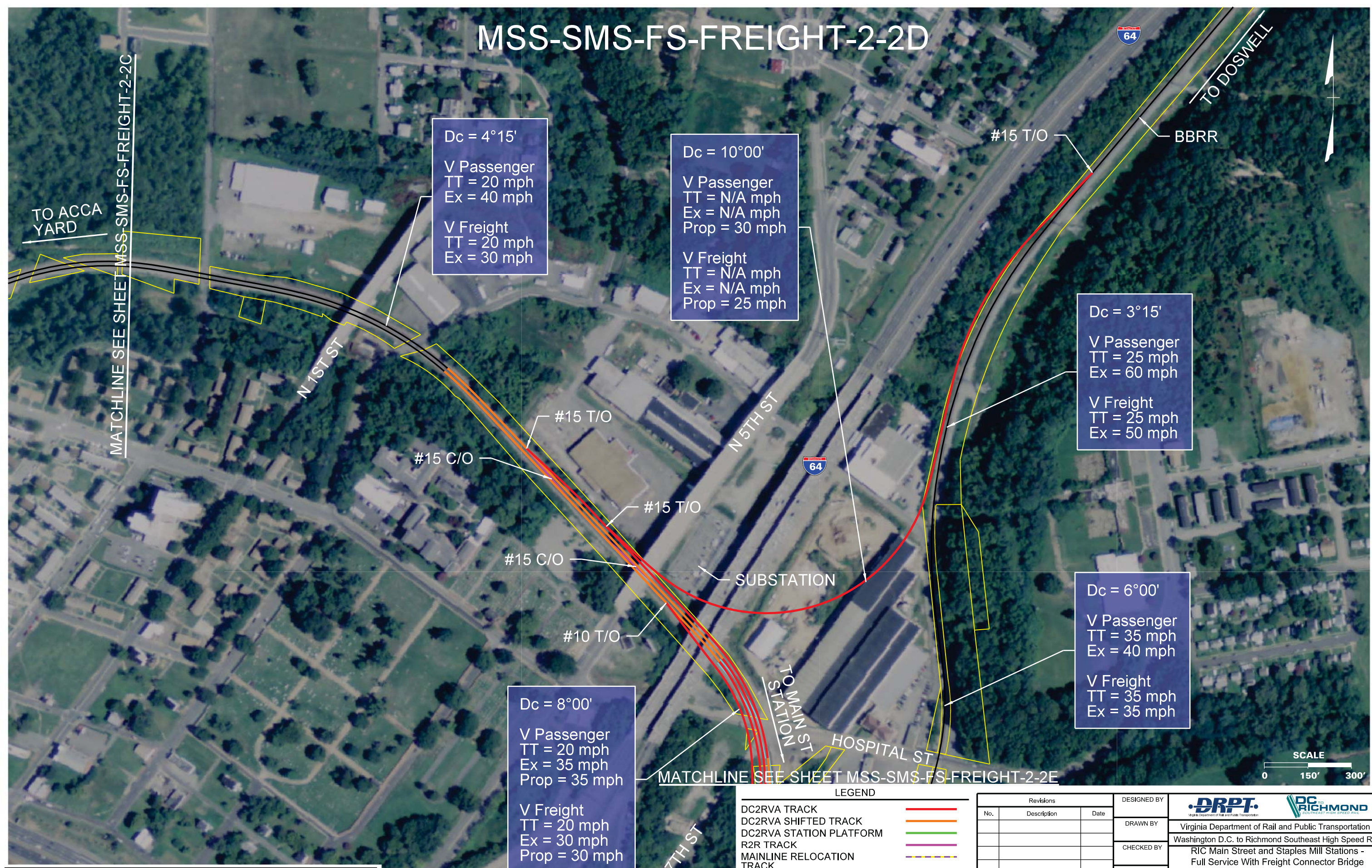
RIC Main Street and Staples Mill Stations - Full Service With Freight Connector Bridge (MSS-SMS-FS-Freight)

Alignment Option Mapbook

PROJECT NO.	DRAWING NO.	SHEET NO.
	GG	10

THESE PLANS ARE UNFINISHED AND UNAPPROVED AND ARE NOT TO BE USED FOR ANY TYPE OF CONSTRUCTION OR THE ACQUISITION OF RIGHT OF WAY.

MSS-SMS-FS-FREIGHT-2-2D



Dc = 4°15'
 V Passenger
 TT = 20 mph
 Ex = 40 mph
 V Freight
 TT = 20 mph
 Ex = 30 mph

Dc = 10°00'
 V Passenger
 TT = N/A mph
 Ex = N/A mph
 Prop = 30 mph
 V Freight
 TT = N/A mph
 Ex = N/A mph
 Prop = 25 mph

Dc = 3°15'
 V Passenger
 TT = 25 mph
 Ex = 60 mph
 V Freight
 TT = 25 mph
 Ex = 50 mph

Dc = 6°00'
 V Passenger
 TT = 35 mph
 Ex = 40 mph
 V Freight
 TT = 35 mph
 Ex = 35 mph

Dc = 8°00'
 V Passenger
 TT = 20 mph
 Ex = 35 mph
 Prop = 35 mph
 V Freight
 TT = 20 mph
 Ex = 30 mph
 Prop = 30 mph

TO ACCA YARD

TO DOSWELL

MATCHLINE SEE SHEET MSS-SMS-FS-FREIGHT-2-2C

MATCHLINE SEE SHEET MSS-SMS-FS-FREIGHT-2-2E



LEGEND	
DC2RVA TRACK	—
DC2RVA SHIFTED TRACK	—
DC2RVA STATION PLATFORM	—
R2R TRACK	—
MAINLINE RELOCATION TRACK	—
RETIRED TRACK	—
EXISTING TRACK	—
EXISTING RW	—

Revisions		
No.	Description	Date

DESIGNED BY			
DRAWN BY	Virginia Department of Rail and Public Transportation		
CHECKED BY	Washington D.C. to Richmond Southeast High Speed Rail		
DATE	11/17/2015		
SCALE	As Shown		
PROJECT NO.	DRAWING NO.	SHEET NO.	
	GG	11	

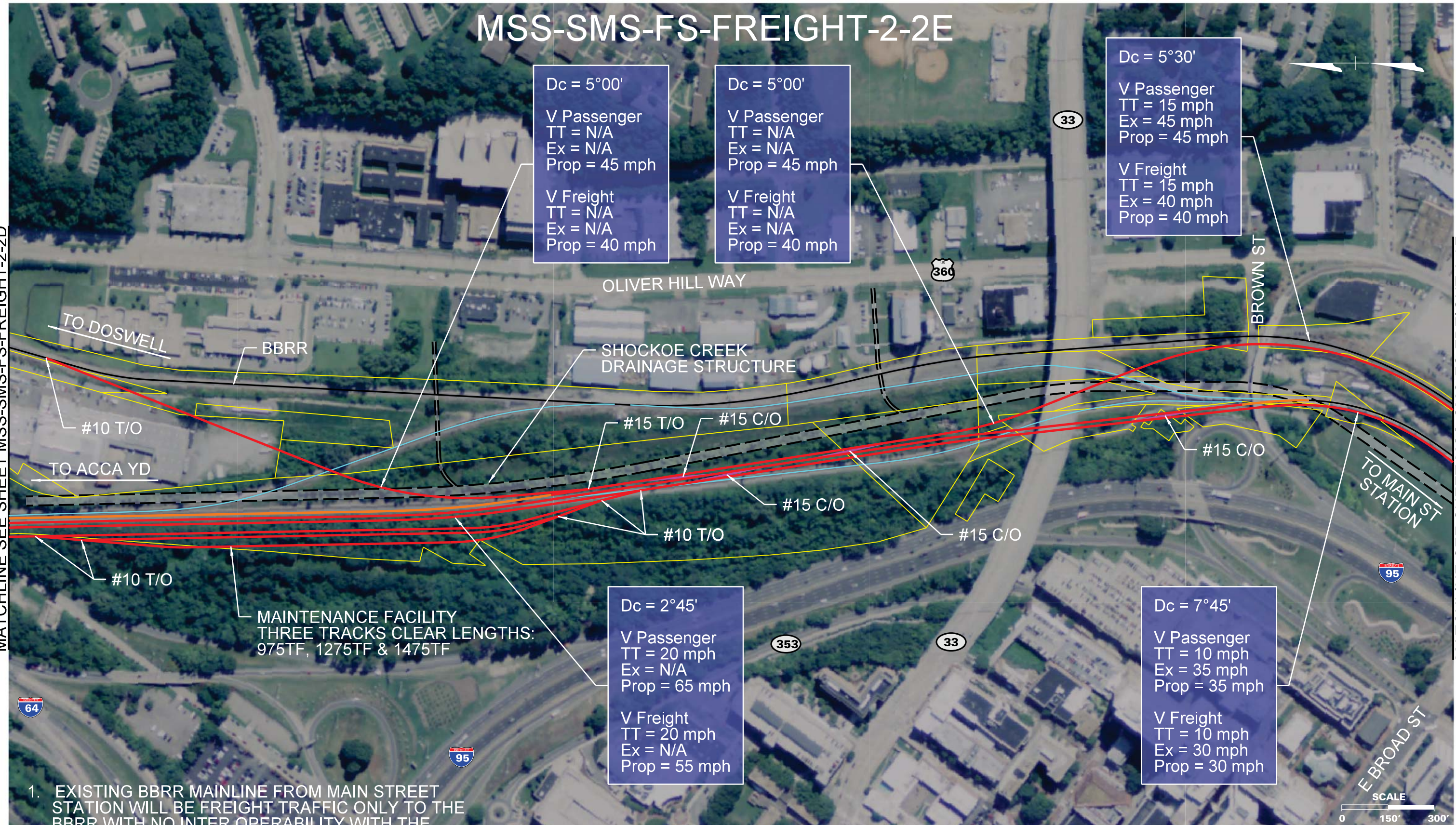
THESE PLANS ARE UNFINISHED AND UNAPPROVED AND ARE NOT TO BE USED FOR ANY TYPE OF CONSTRUCTION OR THE ACQUISITION OF RIGHT OF WAY.

Plotted by: cpowell 11/13/2015 4:28:37 PM MSSM-FS-FC-02-2D.dgn

MSS-SMS-FS-FREIGHT-2-2E

MATCHLINE SEE SHEET MSS-SMS-FS-FREIGHT-2-2D

MATCHLINE SEE SHEET MSS-SMS-FS-FREIGHT-2-2F



Dc = 5°00'
 V Passenger
 TT = N/A
 Ex = N/A
 Prop = 45 mph
 V Freight
 TT = N/A
 Ex = N/A
 Prop = 40 mph

Dc = 5°00'
 V Passenger
 TT = N/A
 Ex = N/A
 Prop = 45 mph
 V Freight
 TT = N/A
 Ex = N/A
 Prop = 40 mph

Dc = 5°30'
 V Passenger
 TT = 15 mph
 Ex = 45 mph
 Prop = 45 mph
 V Freight
 TT = 15 mph
 Ex = 40 mph
 Prop = 40 mph

Dc = 2°45'
 V Passenger
 TT = 20 mph
 Ex = N/A
 Prop = 65 mph
 V Freight
 TT = 20 mph
 Ex = N/A
 Prop = 55 mph

Dc = 7°45'
 V Passenger
 TT = 10 mph
 Ex = 35 mph
 Prop = 35 mph
 V Freight
 TT = 10 mph
 Ex = 30 mph
 Prop = 30 mph

MAINTENANCE FACILITY
 THREE TRACKS CLEAR LENGTHS:
 975TF, 1275TF & 1475TF

- EXISTING BBRR MAINLINE FROM MAIN STREET STATION WILL BE FREIGHT TRAFFIC ONLY TO THE BBRR WITH NO INTER OPERABILITY WITH THE BELLWOOD SUB.
- PROPOSED BBRR MAINLINE FROM MAIN STREET STATION WILL BE FREIGHT/PASSENGER WITH INTER OPERABILITY WITH THE BELLWOOD SUB.

THESE PLANS ARE UNFINISHED AND UNAPPROVED AND ARE NOT TO BE USED FOR ANY TYPE OF CONSTRUCTION OR THE ACQUISITION OF RIGHT OF WAY.

LEGEND	
DC2RVA TRACK	—
DC2RVA SHIFTED TRACK	—
DC2RVA STATION PLATFORM	—
R2R TRACK	—
MAINLINE RELOCATION TRACK	—
RETIRED TRACK	—
EXISTING TRACK	—
EXISTING RW	—

Revisions		
No.	Description	Date

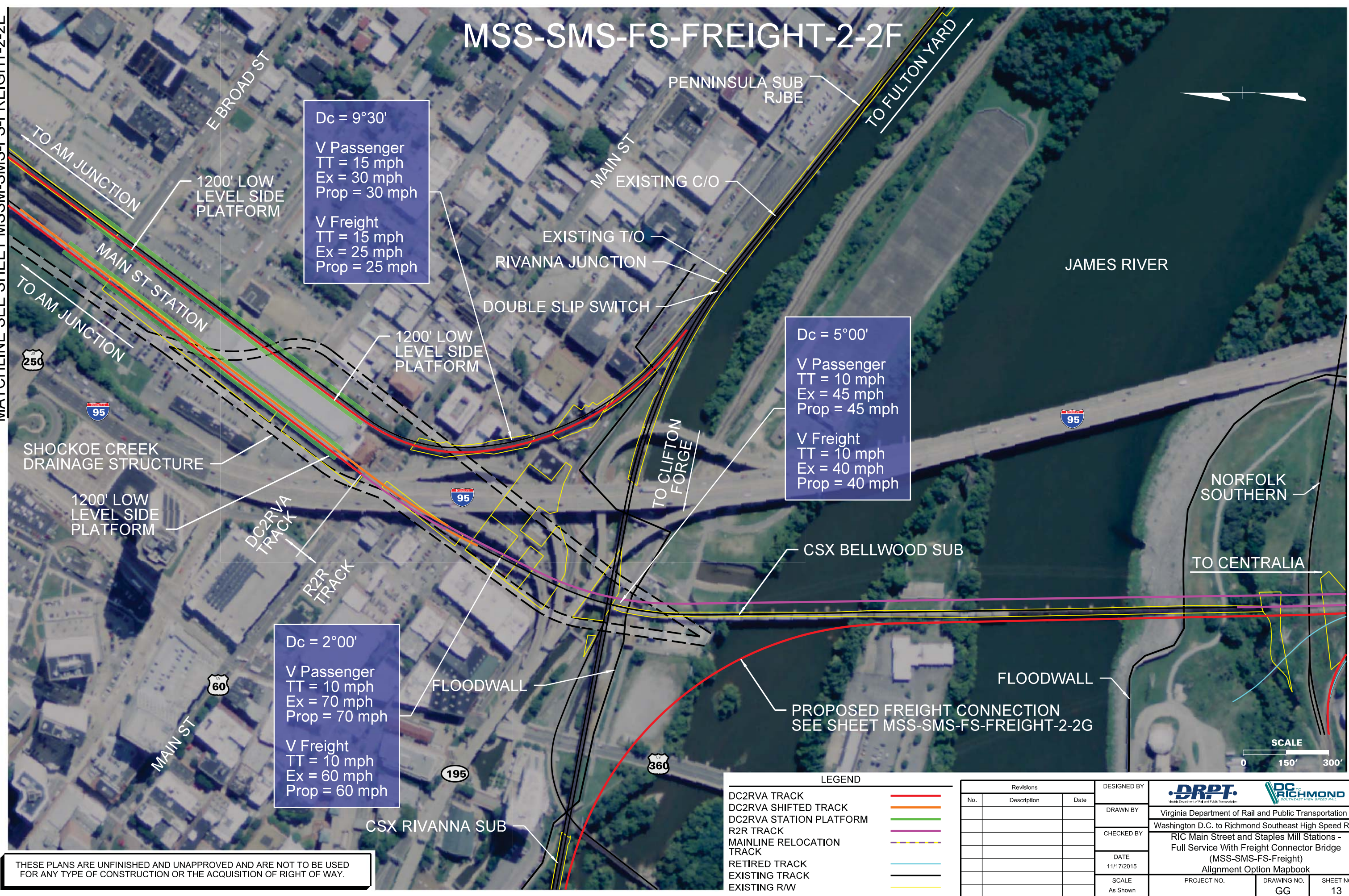
DESIGNED BY	DRPT PC RICHMOND
DRAWN BY	Virginia Department of Rail and Public Transportation
CHECKED BY	Washington D.C. to Richmond Southeast High Speed Rail
DATE	11/17/2015
SCALE	As Shown
PROJECT NO.	DRAWING NO. GG
	SHEET NO. 12

Plotted by cpowell 11/13/2015 4:28:42 PM MSSM-FS-FC-02-2E.dwg

MSS-SMS-FS-FREIGHT-2-2F

MATCHLINE SEE SHEET MSSM-SMS-FS-FREIGHT-2-2E

MATCHLINE SEE SHEET MSS-SMS-FS-FREIGHT-3A



Dc = 9°30'

V Passenger
TT = 15 mph
Ex = 30 mph
Prop = 30 mph

V Freight
TT = 15 mph
Ex = 25 mph
Prop = 25 mph

Dc = 5°00'

V Passenger
TT = 10 mph
Ex = 45 mph
Prop = 45 mph

V Freight
TT = 10 mph
Ex = 40 mph
Prop = 40 mph

Dc = 2°00'

V Passenger
TT = 10 mph
Ex = 70 mph
Prop = 70 mph

V Freight
TT = 10 mph
Ex = 60 mph
Prop = 60 mph

LEGEND	
DC2RVA TRACK	—
DC2RVA SHIFTED TRACK	—
DC2RVA STATION PLATFORM	—
R2R TRACK	—
MAINLINE RELOCATION TRACK	—
RETIRED TRACK	—
EXISTING TRACK	—
EXISTING RW	—

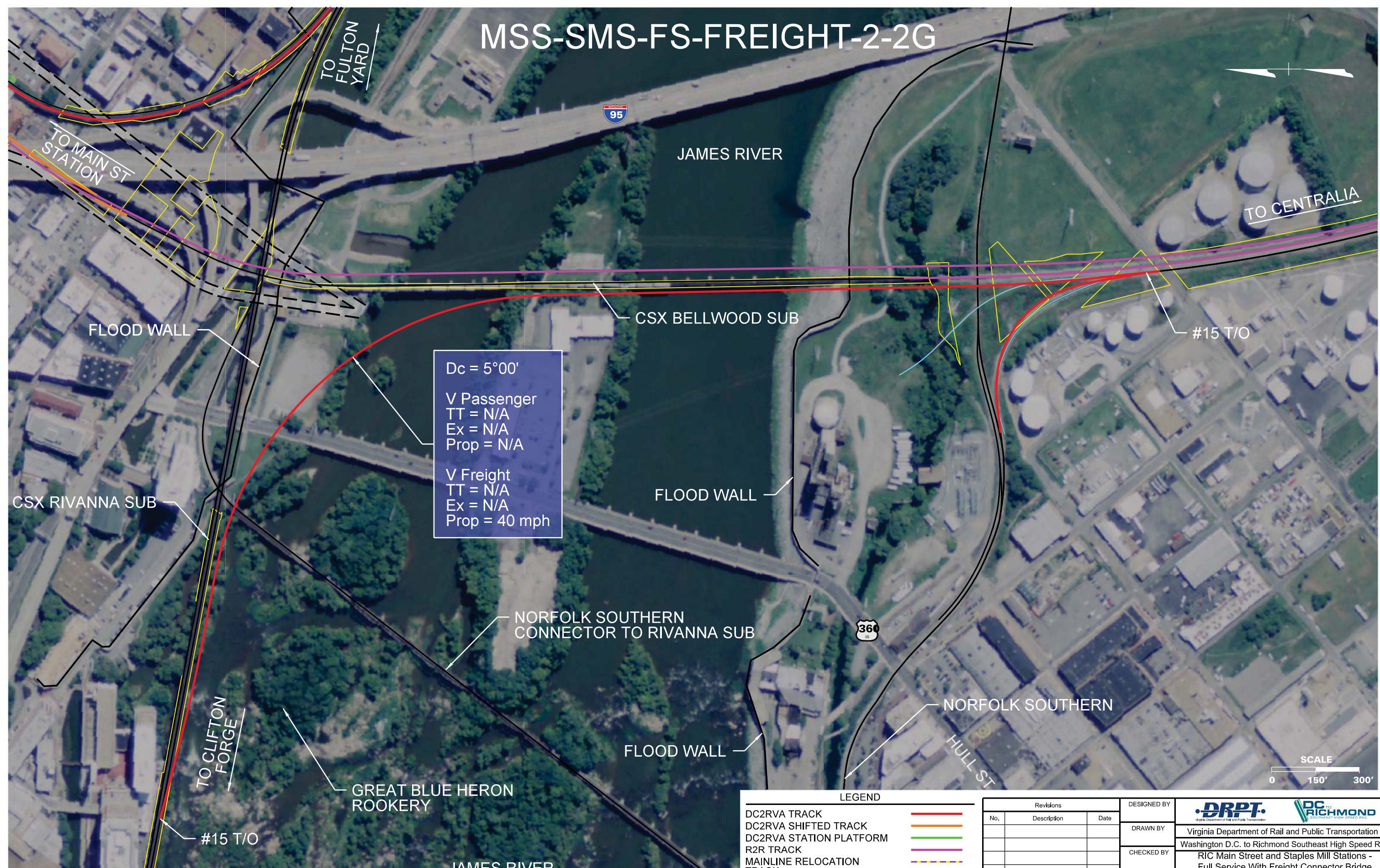
Revisions		
No.	Description	Date

DESIGNED BY			
DRAWN BY	Virginia Department of Rail and Public Transportation		
CHECKED BY	Washington D.C. to Richmond Southeast High Speed Rail		
DATE	11/17/2015		
SCALE	As Shown		
PROJECT NO.	DRAWING NO.	SHEET NO.	
	GG	13	

THESE PLANS ARE UNFINISHED AND UNAPPROVED AND ARE NOT TO BE USED FOR ANY TYPE OF CONSTRUCTION OR THE ACQUISITION OF RIGHT OF WAY.

Plotted by cpowell 11/13/2015 4:28:46 PM MSSM-FS-FC-02-2F.dgn

MSS-SMS-FS-FREIGHT-2-2G



Dc = 5°00'
 V Passenger
 TT = N/A
 Ex = N/A
 Prop = N/A

 V Freight
 TT = N/A
 Ex = N/A
 Prop = 40 mph

LEGEND

DC2RVA TRACK	
DC2RVA SHIFTED TRACK	
DC2RVA STATION PLATFORM	
R2R TRACK	
MAINLINE RELOCATION TRACK	
RETIRED TRACK	
EXISTING TRACK	
EXISTING RW	

Revisions		
No.	Description	Date

DESIGNED BY			
DRAWN BY	Virginia Department of Rail and Public Transportation		
CHECKED BY	Washington D.C. to Richmond Southeast High Speed Rail		
DATE	11/17/2015		
SCALE	As Shown		
PROJECT NO.	DRAWING NO.	SHEET NO.	
	GG	14	

THESE PLANS ARE UNFINISHED AND UNAPPROVED AND ARE NOT TO BE USED FOR ANY TYPE OF CONSTRUCTION OR THE ACQUISITION OF RIGHT OF WAY.

Plotted by: cpowell 11/13/2015 4:26:51 PM
 MSSM-FS-FC-02-2G.dgn

MSS-SMS-FS-FREIGHT-3A

JAMES RIVER



2 - R2R TRACKS
(1 EXIST AND 1 PROP)

#20 C/O

TO CENTRALIA

#20 C/O

#10 T/O

MATCHLINE SEE SHEET MSS-SMS-FS-FREIGHT-3B

NORFOLK
SOUTHERN

MATCHLINE SEE MSS-SMS-FS-FREIGHT-2-2F

TO MAIN ST STATION

PROPOSED FREIGHT CONNECTION
SEE SHEET MSS-SMS-FS-FREIGHT-2-2G

E. 4TH ST

MAURY ST



LEGEND

- DC2RVA TRACK —
- DC2RVA SHIFTED TRACK —
- DC2RVA STATION PLATFORM —
- R2R TRACK —
- MAINLINE RELOCATION TRACK —
- RETIRED TRACK —
- EXISTING TRACK —
- EXISTING RW —

Revisions		
No.	Description	Date

DESIGNED BY	
DRAWN BY	
CHECKED BY	
DATE	11/17/2015
SCALE	As Shown

Virginia Department of Rail and Public Transportation

Richmond
Virginia

Washington D.C. to Richmond Southeast High Speed Rail

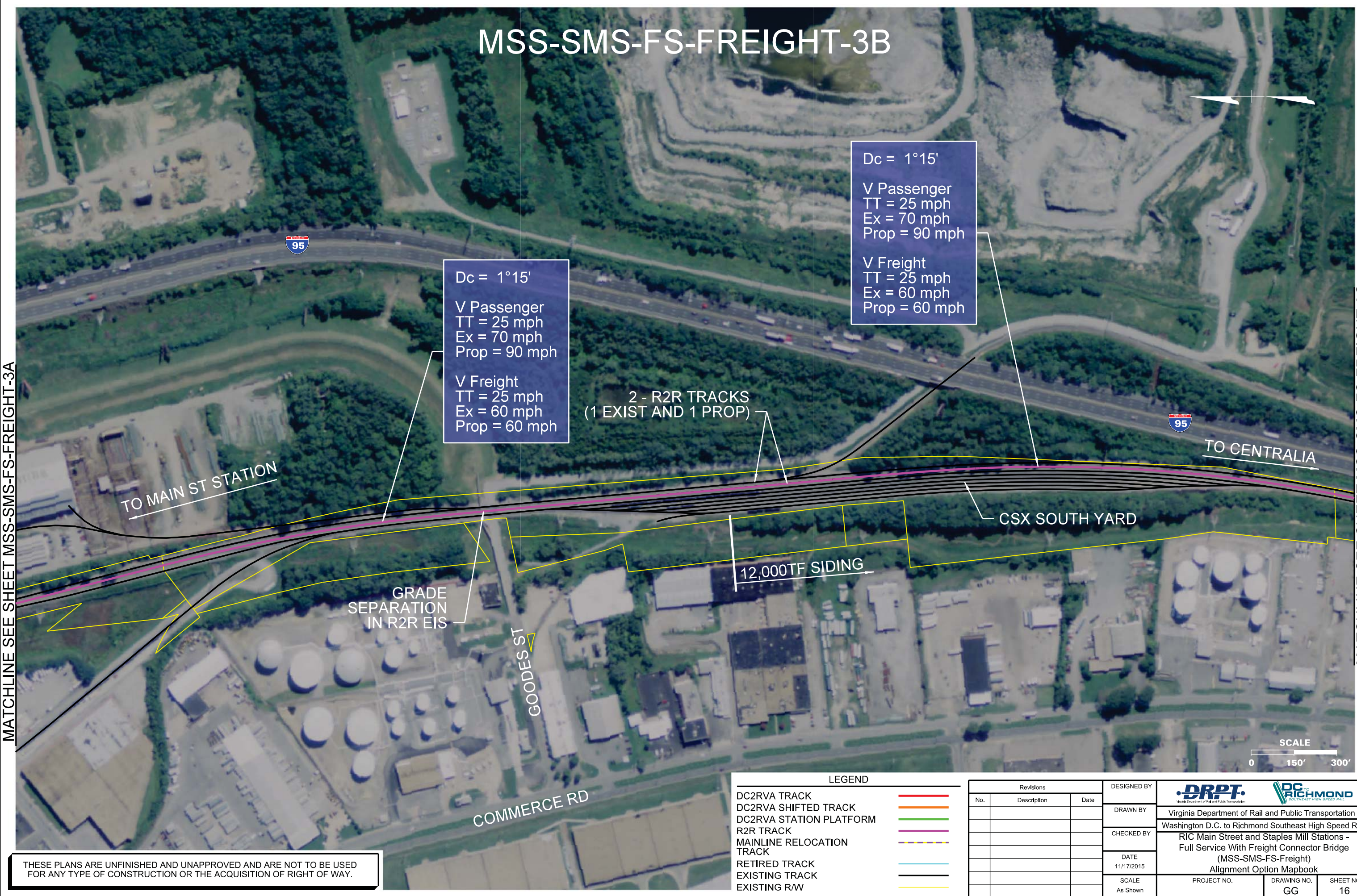
RIC Main Street and Staples Mill Stations -
Full Service With Freight Connector Bridge
(MSS-SMS-FS-Freight)
Alignment Option Mapbook

PROJECT NO.	DRAWING NO. GG	SHEET NO. 15
-------------	-------------------	-----------------

THESE PLANS ARE UNFINISHED AND UNAPPROVED AND ARE NOT TO BE USED FOR ANY TYPE OF CONSTRUCTION OR THE ACQUISITION OF RIGHT OF WAY.

Plotted by: cpowell 11/13/2015 4:28:56 PM MSSM-FS-FC-03A.dgn

MSS-SMS-FS-FREIGHT-3B



Dc = 1°15'

V Passenger
TT = 25 mph
Ex = 70 mph
Prop = 90 mph

V Freight
TT = 25 mph
Ex = 60 mph
Prop = 60 mph

Dc = 1°15'

V Passenger
TT = 25 mph
Ex = 70 mph
Prop = 90 mph

V Freight
TT = 25 mph
Ex = 60 mph
Prop = 60 mph

2 - R2R TRACKS
(1 EXIST AND 1 PROP)

TO MAIN ST STATION

TO CENTRALIA

CSX SOUTH YARD

12,000TF SIDING

GRADE SEPARATION
IN R2R EIS

GOODES ST

COMMERCE RD



MATCHLINE SEE SHEET MSS-SMS-FS-FREIGHT-3A

MATCHLINE SEE SHEET MSS-SMS-FS-FREIGHT-3C

Plotted by cpowell 11/13/2015 4:29:00 PM MSSM-FS-FC-03B.dwg

THESE PLANS ARE UNFINISHED AND UNAPPROVED AND ARE NOT TO BE USED FOR ANY TYPE OF CONSTRUCTION OR THE ACQUISITION OF RIGHT OF WAY.

LEGEND	
DC2RVA TRACK	
DC2RVA SHIFTED TRACK	
DC2RVA STATION PLATFORM	
R2R TRACK	
MAINLINE RELOCATION TRACK	
RETIRED TRACK	
EXISTING TRACK	
EXISTING RW	

Revisions		
No.	Description	Date

DESIGNED BY			
DRAWN BY	Virginia Department of Rail and Public Transportation		
CHECKED BY	Washington D.C. to Richmond Southeast High Speed Rail		
DATE	11/17/2015		
SCALE	As Shown		
PROJECT NO.	DRAWING NO.	SHEET NO.	
	GG	16	

MSS-SMS-FS-FREIGHT-3C

MATCHLINE SEE SHEET MSS-SMS-FS-FREIGHT-3B

MATCHLINE SEE SHEET MSS-SMS-FS-FREIGHT-3D



Dc = 2°00'

V Passenger
TT = 25 mph
Ex = 70 mph
Prop = 90 mph

V Freight
TT = 25 mph
Ex = 60 mph
Prop = 60 mph

THESE PLANS ARE UNFINISHED AND UNAPPROVED AND ARE NOT TO BE USED FOR ANY TYPE OF CONSTRUCTION OR THE ACQUISITION OF RIGHT OF WAY.

LEGEND	
DC2RVA TRACK	—
DC2RVA SHIFTED TRACK	—
DC2RVA STATION PLATFORM	—
R2R TRACK	—
MAINLINE RELOCATION TRACK	—
RETIRED TRACK	—
EXISTING TRACK	—
EXISTING RW	—

Revisions		
No.	Description	Date

DESIGNED BY			
DRAWN BY	Virginia Department of Rail and Public Transportation		
CHECKED BY	Washington D.C. to Richmond Southeast High Speed Rail		
DATE	RIC Main Street and Staples Mill Stations - Full Service With Freight Connector Bridge (MSS-SMS-FS-Freight) Alignment Option Mapbook		
SCALE	PROJECT NO.	DRAWING NO.	SHEET NO.
As Shown		GG	17

MSS-SMS-FS-FREIGHT-3D



ALLEGHANY WAREHOUSES

GRADE SEPARATION
IN R2R EIS

RUFFIN RD

MATCHLINE SEE SHEET MSS-SMS-FS-FREIGHT-3C

MATCHLINE SEE SHEET MSS-SMS-FS-FREIGHT-3E

TO MAIN ST STATION

2 - R2R TRACKS
(2 EXIST)

TO CENTRALIA

12,000TF SIDING

12,000TF SIDING

POWER #15 T/O

Dc = 1°00'
 V Passenger
 TT = 25 mph
 Ex = 85 mph
 Prop = 90 mph

 V Freight
 TT = 25 mph
 Ex = 60 mph
 Prop = 60 mph



LEGEND			Revisions			DESIGNED BY		
No.	Description	Date	No.	Description	Date	DRPT Virginia Department of Rail and Public Transportation		
—	DC2RVA TRACK					DRAWN BY		
—	DC2RVA SHIFTED TRACK					CHECKED BY		
—	DC2RVA STATION PLATFORM					DATE		
—	R2R TRACK					SCALE		
—	MAINLINE RELOCATION TRACK					PROJECT NO.		
—	RETIRED TRACK					DRAWING NO.		
—	EXISTING TRACK					SHEET NO.		
—	EXISTING R/W					18		

THESE PLANS ARE UNFINISHED AND UNAPPROVED AND ARE NOT TO BE USED FOR ANY TYPE OF CONSTRUCTION OR THE ACQUISITION OF RIGHT OF WAY.

Plotted by cpowell 11/13/2015 4:29:00 PM MSSM-FS-FC-03.dwg

MSS-SMS-FS-FREIGHT-3E

PHILLIP MORRIS USA

161

TO MAIN ST STATION

TO CENTRALIA

#20 C/O

#20 C/O

BELLS RD

GRADE SEPARATION
IN R2R EIS

2 - R2R TRACKS
(2 EXIST)

DALE AVE



MATCHLINE SEE SHEET MSS-SMS-FS-FREIGHT-3D

MATCHLINE SEE SHEET MSS-SMS-FS-FREIGHT-3F

THESE PLANS ARE UNFINISHED AND UNAPPROVED AND ARE NOT TO BE USED FOR ANY TYPE OF CONSTRUCTION OR THE ACQUISITION OF RIGHT OF WAY.

LEGEND

- DC2RVA TRACK —
- DC2RVA SHIFTED TRACK —
- DC2RVA STATION PLATFORM —
- R2R TRACK —
- MAINLINE RELOCATION TRACK —
- RETIRED TRACK —
- EXISTING TRACK —
- EXISTING R/W —

Revisions		
No.	Description	Date

DESIGNED BY			
DRAWN BY	Virginia Department of Rail and Public Transportation		
CHECKED BY	Washington D.C. to Richmond Southeast High Speed Rail		
DATE	11/17/2015		
SCALE	As Shown		
PROJECT NO.	DRAWING NO.	SHEET NO.	
	GG	19	

MSS-SMS-FS-FREIGHT-3F

TRENTON AVE

DUPONT

TO MAIN ST STATION

TO CENTRALIA

2 - R2R TRACKS
(2 EXIST)



MATCHLINE SEE SHEET MSS-SMS-FS-FREIGHT-3E

MATCHLINE SEE SHEET MSS-SMS-FS-FREIGHT-3G

THESE PLANS ARE UNFINISHED AND UNAPPROVED AND ARE NOT TO BE USED FOR ANY TYPE OF CONSTRUCTION OR THE ACQUISITION OF RIGHT OF WAY.

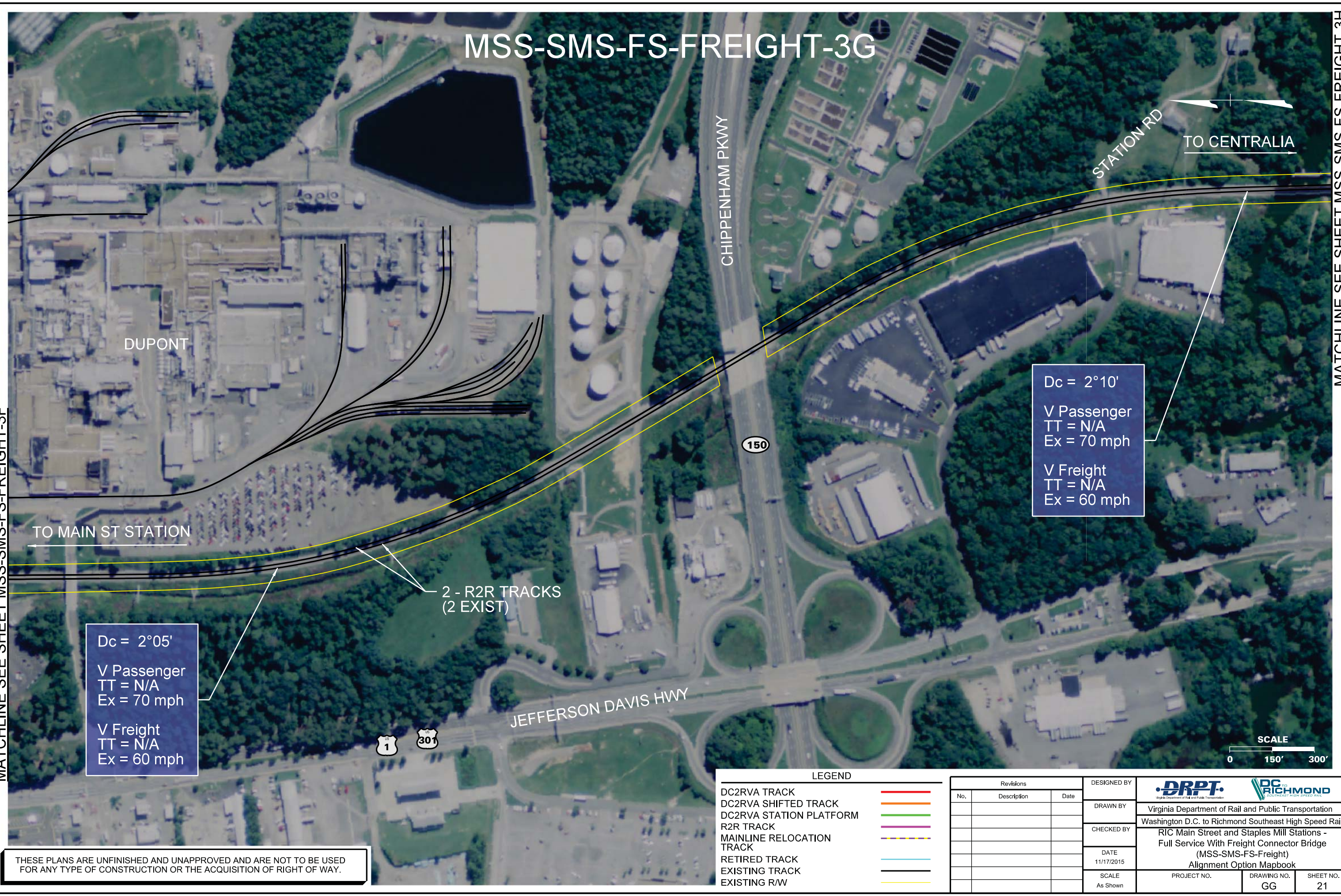
LEGEND	
DC2RVA TRACK	
DC2RVA SHIFTED TRACK	
DC2RVA STATION PLATFORM	
R2R TRACK	
MAINLINE RELOCATION TRACK	
RETIRED TRACK	
EXISTING TRACK	
EXISTING RW	

Revisions		
No.	Description	Date

DESIGNED BY			
DRAWN BY	Virginia Department of Rail and Public Transportation		
CHECKED BY	Washington D.C. to Richmond Southeast High Speed Rail		
DATE	11/17/2015		
SCALE	As Shown		
PROJECT NO.	DRAWING NO.	SHEET NO.	
	GG	20	

Plotted by: cpowell 11/13/2015 4:29:20 PM MSSM-FS-FC-03F.dwg

MSS-SMS-FS-FREIGHT-3G



MATCHLINE SEE SHEET MSS-SMS-FS-FREIGHT-3F

MATCHLINE SEE SHEET MSS-SMS-FS-FREIGHT-3H

Dc = 2°05'
 V Passenger
 TT = N/A
 Ex = 70 mph

 V Freight
 TT = N/A
 Ex = 60 mph

Dc = 2°10'
 V Passenger
 TT = N/A
 Ex = 70 mph

 V Freight
 TT = N/A
 Ex = 60 mph

2 - R2R TRACKS
 (2 EXIST)

TO MAIN ST STATION

STATION RD
 TO CENTRALIA

CHIPPENHAM PKWY

JEFFERSON DAVIS HWY



LEGEND	
DC2RVA TRACK	—
DC2RVA SHIFTED TRACK	—
DC2RVA STATION PLATFORM	—
R2R TRACK	—
MAINLINE RELOCATION TRACK	—
RETIRED TRACK	—
EXISTING TRACK	—
EXISTING RW	—

Revisions		
No.	Description	Date

DESIGNED BY			
DRAWN BY	Virginia Department of Rail and Public Transportation		
CHECKED BY	Washington D.C. to Richmond Southeast High Speed Rail		
DATE	11/17/2015		
SCALE	As Shown		
PROJECT NO.	DRAWING NO.	SHEET NO.	
	GG	21	

THESE PLANS ARE UNFINISHED AND UNAPPROVED AND ARE NOT TO BE USED FOR ANY TYPE OF CONSTRUCTION OR THE ACQUISITION OF RIGHT OF WAY.

Printed by cpowell 11/13/2015 4:29:25 PM MSSM-FS-FC-036.dgn

MSS-SMS-FS-FREIGHT-3H



TO CENTRALIA

MARINA DR



TO MAIN ST STATION

Dc = 2°00'
 V Passenger
 TT = N/A
 Ex = 70 mph
 Prop = 70 mph

 V Freight
 TT = N/A
 Ex = 60 mph
 Prop = 60 mph

2 - R2R TRACKS
 (2 PROP)

#20 C/O

#20 C/O

2 - R2R TRACKS
 (2 EXIST)

Dc = 2°05'
 V Passenger
 TT = N/A
 Ex = 70 mph
 Prop = 70 mph

 V Freight
 TT = N/A
 Ex = 60 mph
 Prop = 60 mph



MATCHLINE SEE SHEET MSS-SMS-FS-FREIGHT-3G

MATCHLINE SEE SHEET MSS-SMS-FS-FREIGHT-3I

LEGEND

- DC2RVA TRACK —
- DC2RVA SHIFTED TRACK —
- DC2RVA STATION PLATFORM —
- R2R TRACK —
- MAINLINE RELOCATION TRACK —
- RETIRED TRACK —
- EXISTING TRACK —
- EXISTING R/W —

Revisions		
No.	Description	Date

DESIGNED BY			
DRAWN BY	Virginia Department of Rail and Public Transportation		
CHECKED BY	Washington D.C. to Richmond Southeast High Speed Rail		
DATE	11/17/2015		
SCALE	As Shown		
PROJECT NO.	DRAWING NO.	SHEET NO.	
	GG	22	

THESE PLANS ARE UNFINISHED AND UNAPPROVED AND ARE NOT TO BE USED FOR ANY TYPE OF CONSTRUCTION OR THE ACQUISITION OF RIGHT OF WAY.

Plotted by cpowell 11/13/2015 4:29:30 PM MSSM-FS-FC-03H.dgn

MSS-SMS-FS-FREIGHT-3I

TO MAIN ST STATION

2 - R2R TRACKS
(2 PROP)

Dc = 2°00'
 V Passenger
 TT = N/A
 Ex = 70 mph
 Prop = 70 mph

 V Freight
 TT = N/A
 Ex = 60 mph
 Prop = 60 mph

Dc = 2°05'
 V Passenger
 TT = N/A
 Ex = 70 mph
 Prop = 70 mph

 V Freight
 TT = N/A
 Ex = 60 mph
 Prop = 60 mph

TO CENTRALIA

MATCHLINE SEE SHEET MSS-SMS-FS-FREIGHT-3H

MATCHLINE SEE SHEET MSS-SMS-FS-FREIGHT-3J

ELLIHAM AVE

JEFFERSON DAVIS HWY



LEGEND

- DC2RVA TRACK —
- DC2RVA SHIFTED TRACK —
- DC2RVA STATION PLATFORM —
- R2R TRACK —
- MAINLINE RELOCATION TRACK —
- RETIRED TRACK —
- EXISTING TRACK —
- EXISTING RW —

Revisions		
No.	Description	Date

DESIGNED BY			
DRAWN BY	Virginia Department of Rail and Public Transportation		
CHECKED BY	Washington D.C. to Richmond Southeast High Speed Rail		
DATE	RIC Main Street and Staples Mill Stations - Full Service With Freight Connector Bridge (MSS-SMS-FS-Freight) Alignment Option Mapbook		
SCALE	PROJECT NO.	DRAWING NO.	SHEET NO.
As Shown		GG	23

THESE PLANS ARE UNFINISHED AND UNAPPROVED AND ARE NOT TO BE USED FOR ANY TYPE OF CONSTRUCTION OR THE ACQUISITION OF RIGHT OF WAY.

MSS-SMS-FS-FREIGHT-3J



MATCHLINE SEE SHEET MSS-SMS-FS-FREIGHT-3I

MATCHLINE SEE SHEET MSS-SMS-FS-FREIGHT-3K

TO MAIN ST STATION

TO CENTRALIA

#20 C/O

2 - R2R TRACKS
(2 PROP)

195

JEFFERSON DAVIS HWY

KINGSDALE RD

PERRYMONT RD

CHESTER RD

1 301



LEGEND

- DC2RVA TRACK —
- DC2RVA SHIFTED TRACK —
- DC2RVA STATION PLATFORM —
- R2R TRACK —
- MAINLINE RELOCATION TRACK —
- RETIRED TRACK —
- EXISTING TRACK —
- EXISTING R/W —

Revisions		
No.	Description	Date

DESIGNED BY			
DRAWN BY	Virginia Department of Rail and Public Transportation		
CHECKED BY	Washington D.C. to Richmond Southeast High Speed Rail		
DATE	RIC Main Street and Staples Mill Stations - Full Service With Freight Connector Bridge (MSS-SMS-FS-Freight) Alignment Option Mapbook		
SCALE	PROJECT NO.	DRAWING NO.	SHEET NO.
As Shown		GG	24

THESE PLANS ARE UNFINISHED AND UNAPPROVED AND ARE NOT TO BE USED FOR ANY TYPE OF CONSTRUCTION OR THE ACQUISITION OF RIGHT OF WAY.

Plotted by: cpowell 11/13/2015 4:29:39 PM
 MSSM-FS-FC-03.dgn

MSS-SMS-FS-FREIGHT-3K

MATCHLINE SEE SHEET MSS-SMS-FS-FREIGHT-3J

MATCHLINE SEE SHEET MSS-SMS-FS-FREIGHT-3L

TO MAIN ST STATION

TO CENTRALIA

2 - R2R TRACKS
(2 PROP)

Dc = 2°30'
 V Passenger
 TT = N/A
 Ex = 70 mph
 Prop = 70 mph

 V Freight
 TT = N/A
 Ex = 60 mph
 Prop = 60 mph



LEGEND	
DC2RVA TRACK	
DC2RVA SHIFTED TRACK	
DC2RVA STATION PLATFORM	
R2R TRACK	
MAINLINE RELOCATION TRACK	
RETIRED TRACK	
EXISTING TRACK	
EXISTING RW	

Revisions		
No.	Description	Date

DESIGNED BY			
DRAWN BY	Virginia Department of Rail and Public Transportation		
CHECKED BY	Washington D.C. to Richmond Southeast High Speed Rail		
DATE	RIC Main Street and Staples Mill Stations - Full Service With Freight Connector Bridge (MSS-SMS-FS-Freight) Alignment Option Mapbook		
SCALE	PROJECT NO.	DRAWING NO.	SHEET NO.
As Shown		GG	25

THESE PLANS ARE UNFINISHED AND UNAPPROVED AND ARE NOT TO BE USED FOR ANY TYPE OF CONSTRUCTION OR THE ACQUISITION OF RIGHT OF WAY.

Plotted by: cpowell 11/13/2015 4:29:45 PM
 MSSM-FS-FC-03K.dgn

MSS-SMS-FS-FREIGHT-3L

145

CHESTER RD

288

WORLD WAR II VETERANS MEMORIAL HWY

MATCHLINE SEE SHEET MSS-SMS-FS-FREIGHT-3M

MATCHLINE SEE SHEET MSS-SMS-FS-FREIGHT-3K

TO MAIN ST STATION

2 - R2R TRACKS
(2 PROP)

#20 C/O

#20 C/O

TO CENTRALIA

OLD LN

EXISTING
C/O

Dc = 2°30'
V Passenger
TT = N/A
Ex = 70 mph
Prop = 70 mph

V Freight
TT = N/A
Ex = 60 mph
Prop = 60 mph

Dc = 4°15'
V Passenger
TT = N/A
Ex = 50 mph
Prop = 50 mph

V Freight
TT = N/A
Ex = 40 mph
Prop = 40 mph

TO ACCA YARD



LEGEND	
DC2RVA TRACK	
DC2RVA SHIFTED TRACK	
DC2RVA STATION PLATFORM	
R2R TRACK	
MAINLINE RELOCATION TRACK	
RETIRED TRACK	
EXISTING TRACK	
EXISTING R/W	

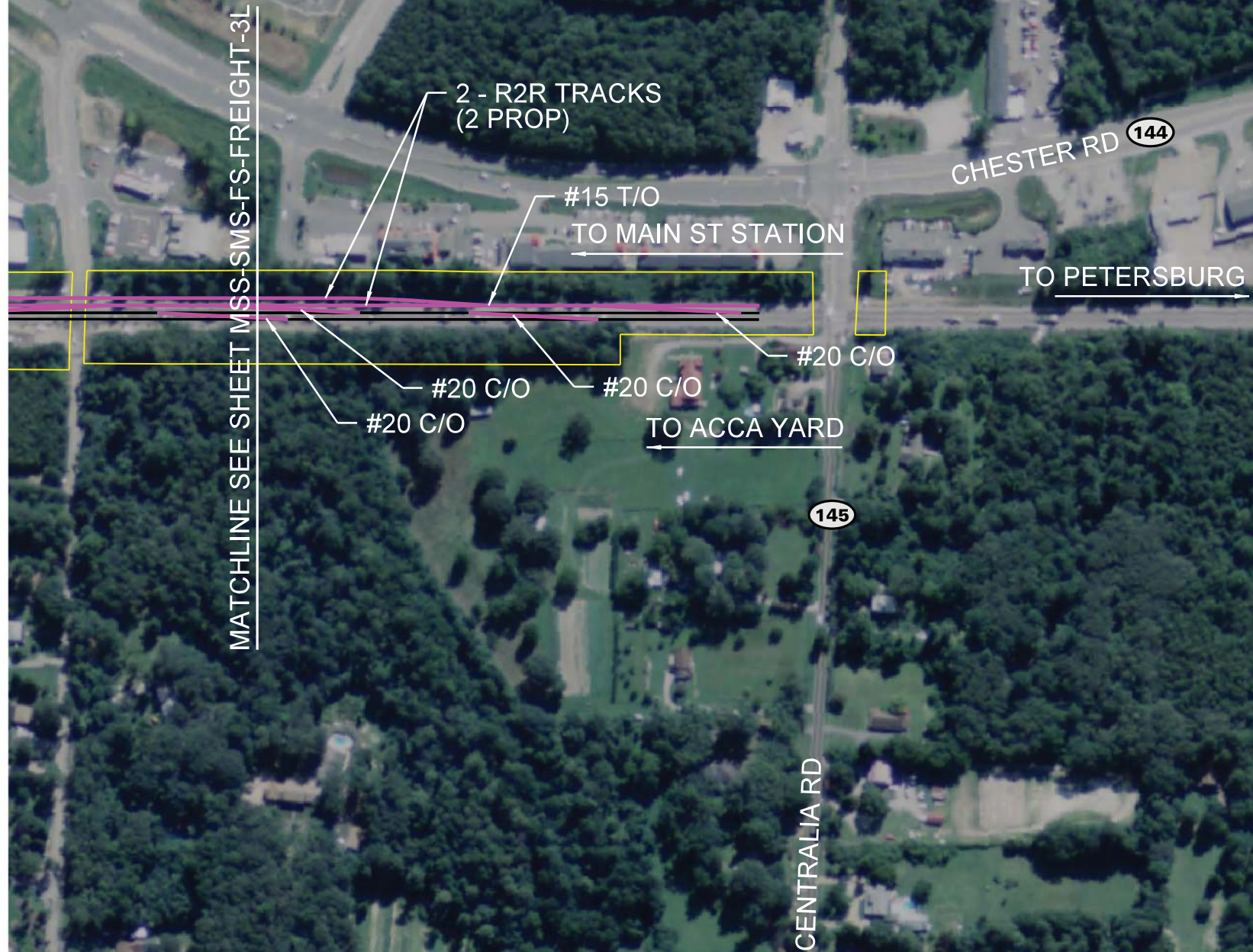
Revisions		
No.	Description	Date

DESIGNED BY			
DRAWN BY	Virginia Department of Rail and Public Transportation		
CHECKED BY	Washington D.C. to Richmond Southeast High Speed Rail		
DATE	11/17/2015		
SCALE	As Shown		
PROJECT NO.	DRAWING NO.	SHEET NO.	
	GG	26	

THESE PLANS ARE UNFINISHED AND UNAPPROVED AND ARE NOT TO BE USED FOR ANY TYPE OF CONSTRUCTION OR THE ACQUISITION OF RIGHT OF WAY.

Plotted by: cpowell 11/13/2015 4:29:51 PM MSSM-FS-FC-03L.dgn

MSS-SMS-FS-FREIGHT-3M



LEGEND	
DC2RVA TRACK	
DC2RVA SHIFTED TRACK	
DC2RVA STATION PLATFORM	
R2R TRACK	
MAINLINE RELOCATION TRACK	
RETIRED TRACK	
EXISTING TRACK	
EXISTING R/W	

Revisions		
No.	Description	Date

DESIGNED BY			
DRAWN BY	Virginia Department of Rail and Public Transportation		
CHECKED BY	Washington D.C. to Richmond Southeast High Speed Rail		
DATE	11/17/2015		
SCALE	As Shown		
PROJECT NO.	DRAWING NO.	SHEET NO.	
	GG	27	

THESE PLANS ARE UNFINISHED AND UNAPPROVED AND ARE NOT TO BE USED FOR ANY TYPE OF CONSTRUCTION OR THE ACQUISITION OF RIGHT OF WAY.

Plotted by cpowell 11/13/2015 4:29:58 PM
 MSSM-FS-FC-03M.dgn