

BVSO S-Line WITH FREIGHT CONNECTOR OVERVIEW



THESE PLANS ARE UNFINISHED AND UNAPPROVED AND ARE NOT TO BE USED FOR ANY TYPE OF CONSTRUCTION OR THE ACQUISITION OF RIGHT OF WAY.

LEGEND

- DC2RVA TRACK —
- DC2RVA SHIFTED TRACK —
- DC2RVA STATION PLATFORM —
- R2R TRACK —
- MAINLINE RELOCATION TRACK —
- RETIRED TRACK —
- EXISTING TRACK —
- EXISTING RW —

Revisions		
No.	Description	Date

DESIGNED BY			
DRAWN BY	Virginia Department of Rail and Public Transportation		
CHECKED BY	Washington D.C. to Richmond Southeast High Speed Rail		
DATE	RIC Boulevard Station Only - S-Line with Freight Connector (BVSO S-Line Freight) Alignment Option Mapbook		
SCALE	PROJECT NO.	DRAWING NO.	SHEET NO.
As Shown		MM	1

BVSO S-Line Freight-1A



MATCHLINE SEE SHEET BVSO S-Line Freight-1B

THESE PLANS ARE UNFINISHED AND UNAPPROVED AND ARE NOT TO BE USED FOR ANY TYPE OF CONSTRUCTION OR THE ACQUISITION OF RIGHT OF WAY.

LEGEND

- DC2RVA TRACK —
- DC2RVA SHIFTED TRACK —
- DC2RVA STATION PLATFORM —
- R2R TRACK —
- MAINLINE RELOCATION TRACK —
- RETIRED TRACK —
- EXISTING TRACK —
- EXISTING R/W —

Revisions		
No.	Description	Date

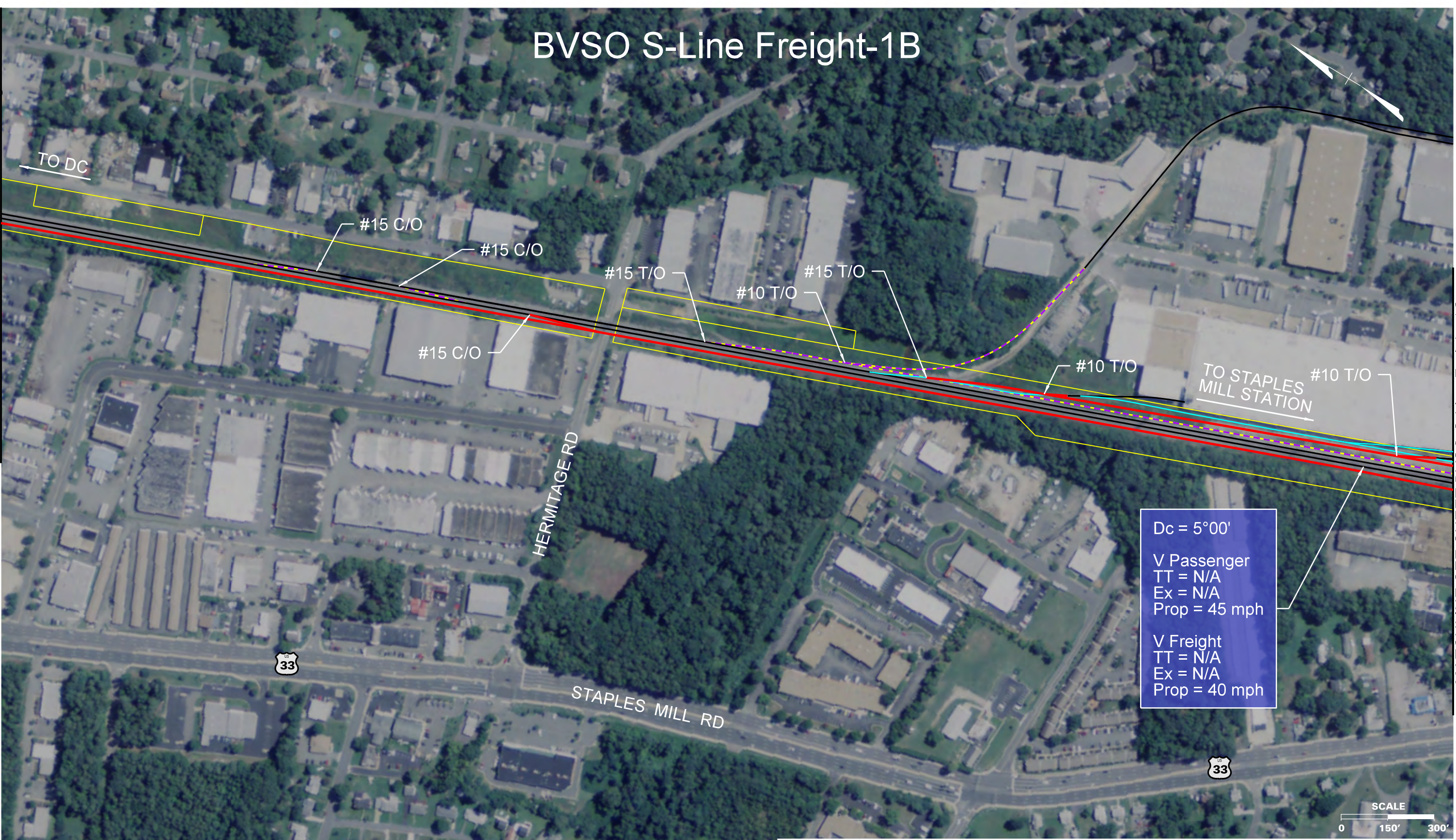
DESIGNED BY			
DRAWN BY	Virginia Department of Rail and Public Transportation		
CHECKED BY	Washington D.C. to Richmond Southeast High Speed Rail		
DATE	RIC Boulevard Station Only - S-Line with Freight Connector (BVSO S-Line Freight) Alignment Option Mapbook		
SCALE	PROJECT NO.	DRAWING NO.	SHEET NO.
As Shown		MM	2

Plotted by gmadlin 11/13/2015 4:54:28 PM BVSO S-Line-01A.dgn

BVSO S-Line Freight-1B

MATCHLINE SEE SHEET BVSO S-Line Freight-1A

MATCHLINE SEE SHEET BVSO S-Line Freight-1C



Dc = 5°00'
 V Passenger
 TT = N/A
 Ex = N/A
 Prop = 45 mph

 V Freight
 TT = N/A
 Ex = N/A
 Prop = 40 mph



THESE PLANS ARE UNFINISHED AND UNAPPROVED AND ARE NOT TO BE USED FOR ANY TYPE OF CONSTRUCTION OR THE ACQUISITION OF RIGHT OF WAY.

LEGEND	
DC2RVA TRACK	—
DC2RVA SHIFTED TRACK	—
DC2RVA STATION PLATFORM	—
R2R TRACK	—
MAINLINE RELOCATION TRACK	—
RETIRED TRACK	—
EXISTING TRACK	—
EXISTING RW	—

Revisions		
No.	Description	Date

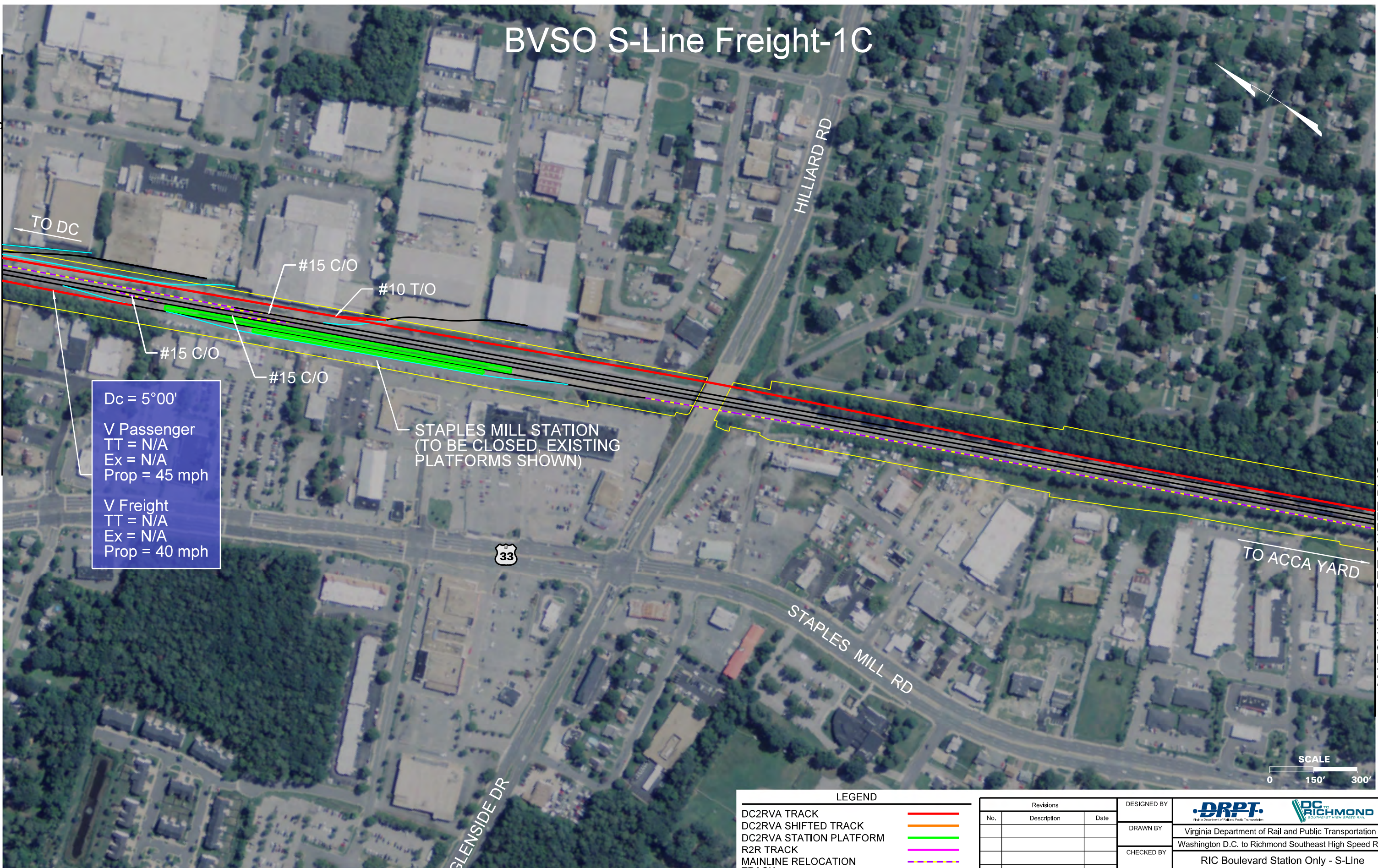
DESIGNED BY			
DRAWN BY	Virginia Department of Rail and Public Transportation		
CHECKED BY	Washington D.C. to Richmond Southeast High Speed Rail		
DATE	RIC Boulevard Station Only - S-Line with Freight Connector (BVSO S-Line Freight) Alignment Option Mapbook		
SCALE	PROJECT NO.	DRAWING NO.	SHEET NO.
As Shown		MM	3

Plotted by gmadlin 11/13/2015 4:54:54 PM
 BVSO S-Line-01E.dgn

BVSO S-Line Freight-1C

MATCHLINE SEE SHEET BVSO S-Line Freight-1B

MATCHLINE SEE SHEET BVSO S-Line Freight-1D



Dc = 5°00'
 V Passenger
 TT = N/A
 Ex = N/A
 Prop = 45 mph

 V Freight
 TT = N/A
 Ex = N/A
 Prop = 40 mph

STAPLES MILL STATION
(TO BE CLOSED, EXISTING PLATFORMS SHOWN)

LEGEND	
DC2RVA TRACK	—
DC2RVA SHIFTED TRACK	—
DC2RVA STATION PLATFORM	—
R2R TRACK	—
MAINLINE RELOCATION TRACK	—
RETIRED TRACK	—
EXISTING TRACK	—
EXISTING RW	—

Revisions		
No.	Description	Date

DESIGNED BY			
DRAWN BY	Virginia Department of Rail and Public Transportation		
CHECKED BY	Washington D.C. to Richmond Southeast High Speed Rail		
DATE	11/17/2015		
SCALE	As Shown		
PROJECT NO.	DRAWING NO.	SHEET NO.	
	MM	4	

THESE PLANS ARE UNFINISHED AND UNAPPROVED AND ARE NOT TO BE USED FOR ANY TYPE OF CONSTRUCTION OR THE ACQUISITION OF RIGHT OF WAY.

Plotted by: gmadlin 11/13/2015 4:34:41 PM
 BVSO S-Line-DC-09n

BVSO S-Line Freight-1D

MATCHLINE SEE SHEET BVSO S-Line Freight-1C

MATCHLINE SEE SHEET BVSO S-Line Freight-1E



Dc = 1°00'

V Passenger
TT = N/A
Ex = N/A
Prop = 80 mph

V Freight
TT = N/A
Ex = N/A
Prop = 60 mph

Dc = 1°00'

V Passenger
TT = N/A
Ex = N/A
Prop = 80 mph

V Freight
TT = N/A
Ex = N/A
Prop = 60 mph

Dc = 1°45'

V Passenger
TT = N/A
Ex = N/A
Prop = 75 mph

V Freight
TT = N/A
Ex = N/A
Prop = 60 mph

Dc = 1°00'

V Passenger
TT = N/A
Ex = N/A
Prop = 80 mph

V Freight
TT = N/A
Ex = N/A
Prop = 60 mph

LEGEND			Revisions			DESIGNED BY		
No.	Description	Date	No.	Description	Date	DRPT Virginia Department of Rail and Public Transportation		
—	DC2RVA TRACK					DRAWN BY		
—	DC2RVA SHIFTED TRACK					CHECKED BY		
—	DC2RVA STATION PLATFORM					DATE		
—	R2R TRACK					SCALE		
—	MAINLINE RELOCATION TRACK					PROJECT NO.		
—	RETIRED TRACK					DRAWING NO.		
—	EXISTING TRACK					SHEET NO.		
—	EXISTING RW					5		

THESE PLANS ARE UNFINISHED AND UNAPPROVED AND ARE NOT TO BE USED FOR ANY TYPE OF CONSTRUCTION OR THE ACQUISITION OF RIGHT OF WAY.

Plotted by gmadlin 11/13/2015 4:54:48 PM BVSO S-Line-01D.dgn

BVSO S-Line Freight-1E

Dc = 1°00'
 V Passenger
 TT = N/A
 Ex = N/A
 Prop = 80 mph

 V Freight
 TT = N/A
 Ex = N/A
 Prop = 60 mph

Dc = 1°00'
 V Passenger
 TT = N/A
 Ex = N/A
 Prop = 80 mph

 V Freight
 TT = N/A
 Ex = N/A
 Prop = 60 mph

Dc = 3°00'
 V Passenger
 TT = N/A
 Ex = N/A
 Prop = 60 mph

 V Freight
 TT = N/A
 Ex = N/A
 Prop = 55 mph

Dc = 1°00'
 V Passenger
 TT = N/A
 Ex = N/A
 Prop = 80 mph

 V Freight
 TT = N/A
 Ex = N/A
 Prop = 60 mph

MATCHLINE SEE SHEET BVSO S-Line Freight-1D

MATCHLINE SEE SHEET BVSO S-Line Freight-1F

TO STAPLES MILL STATION

2 PROPOSED PASSENGER BYPASS

ACCA YARD

CSX BIDS / TRANSLOAD FACILITY

TO BOULEVARD STATION

BRYAN PARK MAINTENANCE FACILITY



THESE PLANS ARE UNFINISHED AND UNAPPROVED AND ARE NOT TO BE USED FOR ANY TYPE OF CONSTRUCTION OR THE ACQUISITION OF RIGHT OF WAY.

LEGEND	
DC2RVA TRACK	
DC2RVA SHIFTED TRACK	
DC2RVA STATION PLATFORM	
R2R TRACK	
MAINLINE RELOCATION TRACK	
RETIRED TRACK	
EXISTING TRACK	
EXISTING RW	

Revisions		
No.	Description	Date

DESIGNED BY	
DRAWN BY	Virginia Department of Rail and Public Transportation
CHECKED BY	Washington D.C. to Richmond Southeast High Speed Rail
DATE	11/17/2015
SCALE	As Shown
PROJECT NO.	DRAWING NO. MM
	SHEET NO. 6

Printed by gmadlin 11/13/2015 4:34:54 PM BVSO S-Line-01E.dgn

BVSO S-Line Freight-1F

MATCHLINE SEE SHEET BVSO S-Line Freight-1E

MATCHLINE SEE SHEET BVSO S-Line Freight-2-2A

Dc = 1°00'
 V Passenger
 TT = N/A
 Ex = N/A
 Prop = 80 mph
 V Freight
 TT = N/A
 Ex = N/A
 Prop = 60 mph

Dc = 1°00'
 V Passenger
 TT = N/A
 Ex = N/A
 Prop = 80 mph
 V Freight
 TT = N/A
 Ex = N/A
 Prop = 60 mph

Dc = 6°15'
 V Passenger
 TT = N/A
 Ex = N/A
 Prop = 30 mph
 V Freight
 TT = N/A
 Ex = N/A
 Prop = 30 mph

Dc = 5°00'
 V Passenger
 TT = N/A
 Ex = N/A
 Prop = 45 mph
 V Freight
 TT = N/A
 Ex = N/A
 Prop = 40 mph

Dc = 7°30'
 V Passenger
 TT = N/A
 Ex = N/A
 Prop = 20 mph
 V Freight
 TT = N/A
 Ex = N/A
 Prop = 20 mph

Dc = 4°45'
 V Passenger
 TT = N/A
 Ex = N/A
 Prop = 30 mph
 V Freight
 TT = N/A
 Ex = N/A
 Prop = 30 mph

Dc = 7°00'
 V Passenger
 TT = N/A
 Ex = N/A
 Prop = 20 mph
 V Freight
 TT = N/A
 Ex = N/A
 Prop = 20 mph

Dc = 7°30'
 V Passenger
 TT = N/A
 Ex = N/A
 Prop = 20 mph
 V Freight
 TT = N/A
 Ex = N/A
 Prop = 20 mph

Dc = 2°00'
 V Passenger
 TT = N/A
 Ex = N/A
 Prop = 70 mph
 V Freight
 TT = N/A
 Ex = N/A
 Prop = 60 mph

THESE PLANS ARE UNFINISHED AND UNAPPROVED AND ARE NOT TO BE USED FOR ANY TYPE OF CONSTRUCTION OR THE ACQUISITION OF RIGHT OF WAY.

LEGEND

- DC2RVA TRACK —
- DC2RVA SHIFTED TRACK —
- DC2RVA STATION PLATFORM —
- R2R TRACK —
- MAINLINE RELOCATION TRACK —
- RETIRED TRACK —
- EXISTING TRACK —
- EXISTING RW —

Revisions		
No.	Description	Date

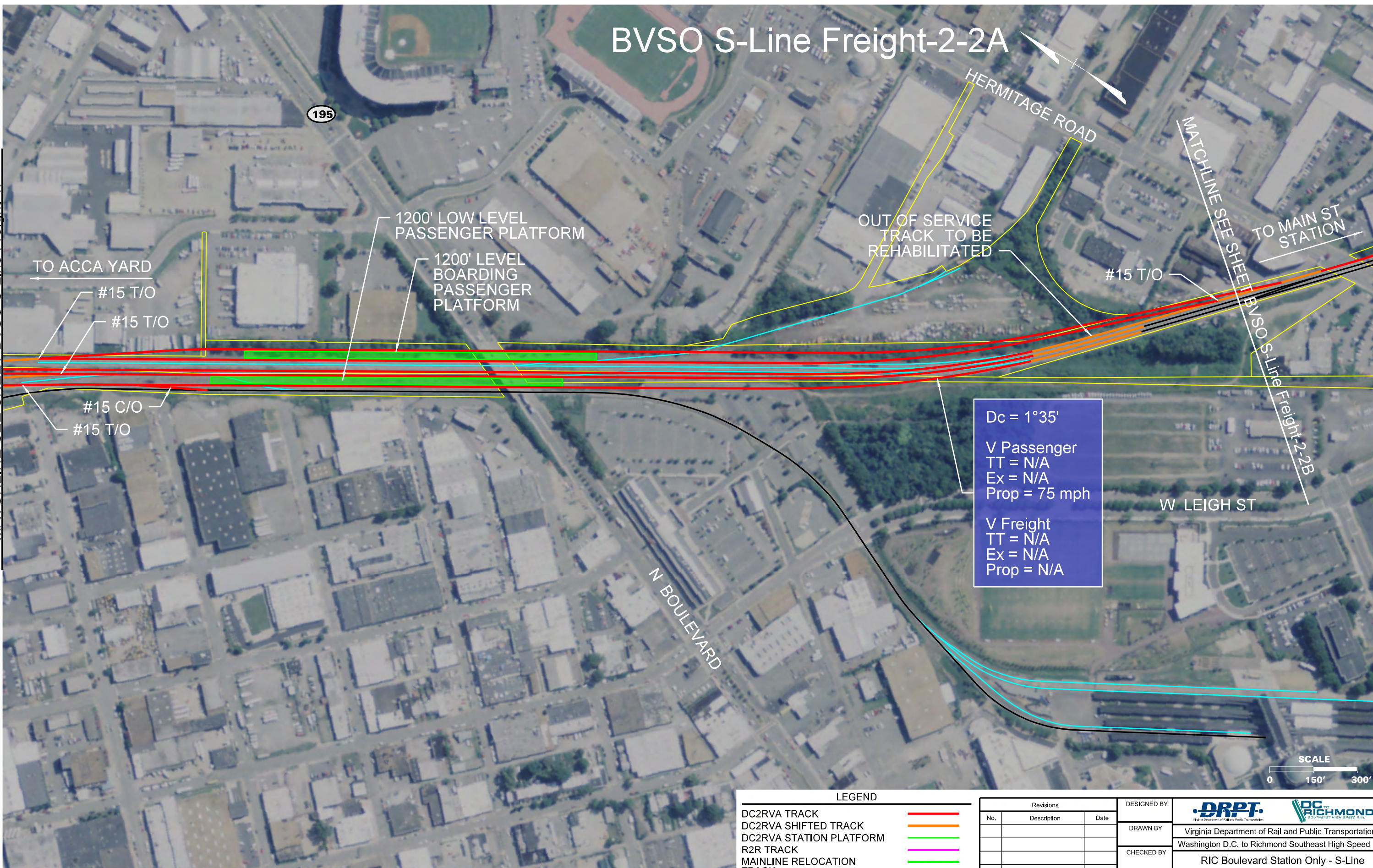
DESIGNED BY			
DRAWN BY	Virginia Department of Rail and Public Transportation		
CHECKED BY	Washington D.C. to Richmond Southeast High Speed Rail		
DATE	11/17/2015		
SCALE	As Shown		
PROJECT NO.	DRAWING NO.	SHEET NO.	
	MM	7	



Plotted by gmadlin 11/13/2015 4:35:01 PM
 BVSO S-Line-01F.dgn

BVSO S-Line Freight-2-2A

MATCHLINE SEE SHEET BVSO S-Line Freight-1F




Dc = 1°35'
 V Passenger
 TT = N/A
 Ex = N/A
 Prop = 75 mph
 V Freight
 TT = N/A
 Ex = N/A
 Prop = N/A




LEGEND	
DC2RVA TRACK	—
DC2RVA SHIFTED TRACK	—
DC2RVA STATION PLATFORM	—
R2R TRACK	—
MAINLINE RELOCATION TRACK	—
RETIRED TRACK	—
EXISTING TRACK	—
EXISTING RW	—

Revisions		
No.	Description	Date

DESIGNED BY	
DRAWN BY	
CHECKED BY	
DATE	11/17/2015
SCALE	As Shown



Virginia Department of Rail and Public Transportation



Metrolink

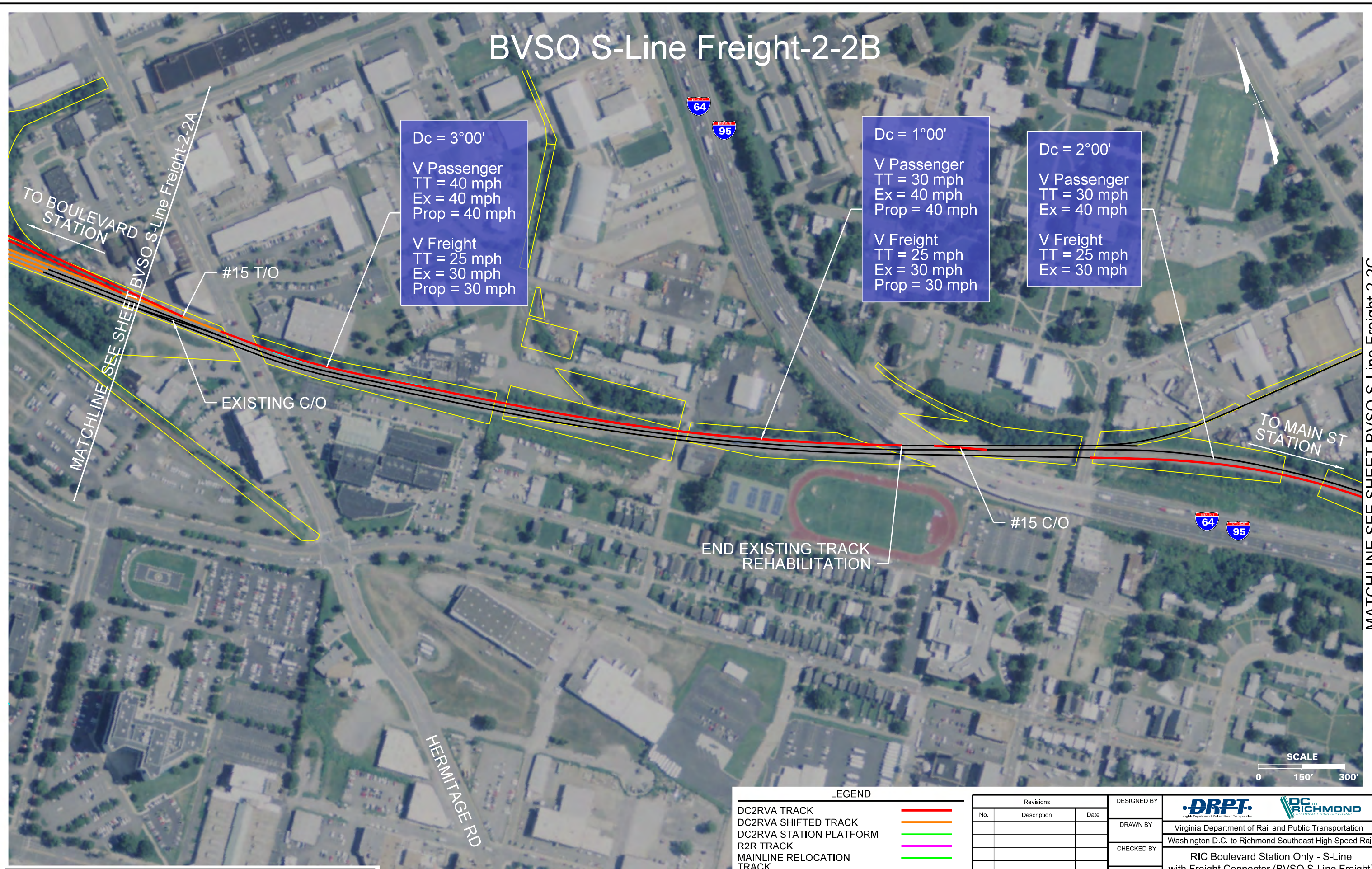
Washington D.C. to Richmond Southeast High Speed Rail

RIC Boulevard Station Only - S-Line with Freight Connector (BVSO S-Line Freight) Alignment Option Mapbook

PROJECT NO.	DRAWING NO.	SHEET NO.
	MM	8

THESE PLANS ARE UNFINISHED AND UNAPPROVED AND ARE NOT TO BE USED FOR ANY TYPE OF CONSTRUCTION OR THE ACQUISITION OF RIGHT OF WAY.

BVSO S-Line Freight-2-2B



Plotted by Jmaruval 11/30/2015 3:46:50 PM
 BVSO S-Line-02-2B.dgn

THESE PLANS ARE UNFINISHED AND UNAPPROVED AND ARE NOT TO BE USED FOR ANY TYPE OF CONSTRUCTION OR THE ACQUISITION OF RIGHT OF WAY.

LEGEND	
DC2RVA TRACK	—
DC2RVA SHIFTED TRACK	—
DC2RVA STATION PLATFORM	—
R2R TRACK	—
MAINLINE RELOCATION TRACK	—
RETIRED TRACK	—
EXISTING TRACK	—
EXISTING RW	—

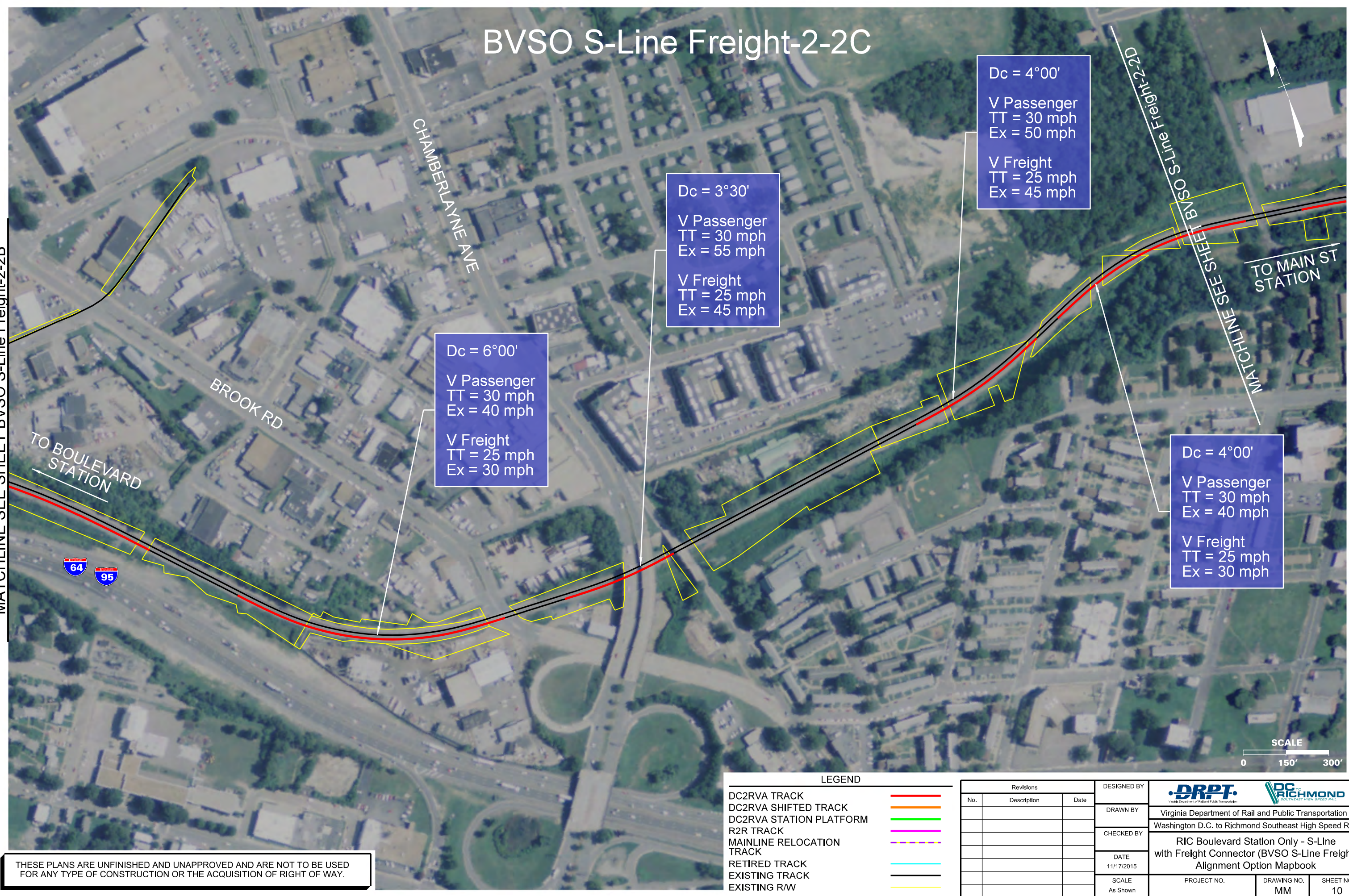
Revisions		
No.	Description	Date

DESIGNED BY			
DRAWN BY	Virginia Department of Rail and Public Transportation		
CHECKED BY	Washington D.C. to Richmond Southeast High Speed Rail		
DATE	11/17/2015		
SCALE	As Shown		
PROJECT NO.	DRAWING NO.	SHEET NO.	
	MM	9	



BVSO S-Line Freight-2-2C

MATCHLINE SEE SHEET BVSO S-Line Freight-2-2B



Dc = 3°30'
 V Passenger
 TT = 30 mph
 Ex = 55 mph
 V Freight
 TT = 25 mph
 Ex = 45 mph

Dc = 6°00'
 V Passenger
 TT = 30 mph
 Ex = 40 mph
 V Freight
 TT = 25 mph
 Ex = 30 mph

Dc = 4°00'
 V Passenger
 TT = 30 mph
 Ex = 50 mph
 V Freight
 TT = 25 mph
 Ex = 45 mph

Dc = 4°00'
 V Passenger
 TT = 30 mph
 Ex = 40 mph
 V Freight
 TT = 25 mph
 Ex = 30 mph

TO BOULEVARD STATION

TO MAIN STATION



LEGEND	
DC2RVA TRACK	—
DC2RVA SHIFTED TRACK	—
DC2RVA STATION PLATFORM	—
R2R TRACK	—
MAINLINE RELOCATION TRACK	—
RETIRED TRACK	—
EXISTING TRACK	—
EXISTING RW	—

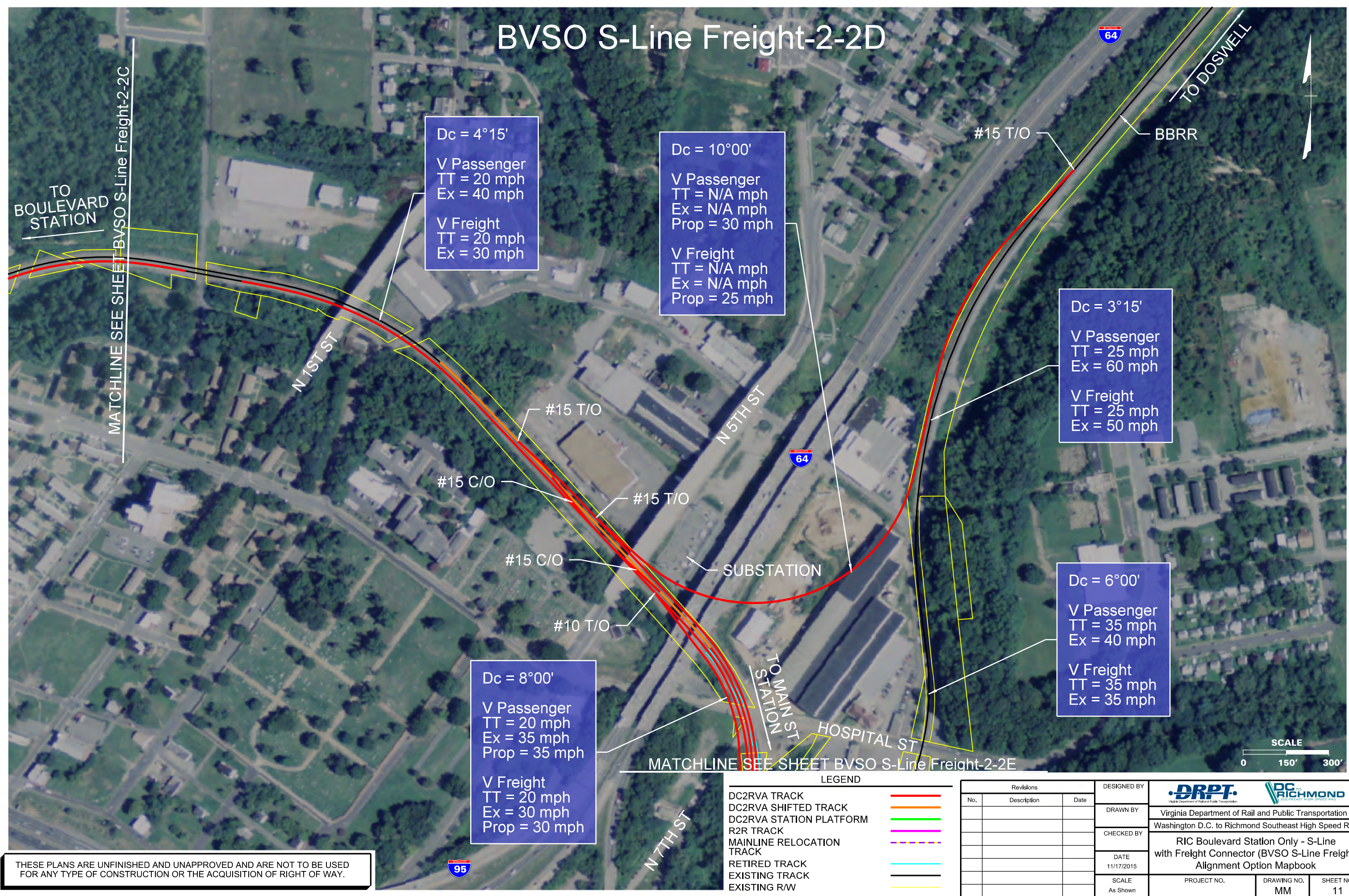
Revisions		
No.	Description	Date

DESIGNED BY			
DRAWN BY	Virginia Department of Rail and Public Transportation		
CHECKED BY	Washington D.C. to Richmond Southeast High Speed Rail		
DATE	11/17/2015		
SCALE	As Shown		
PROJECT NO.	DRAWING NO.	SHEET NO.	
	MM	10	

THESE PLANS ARE UNFINISHED AND UNAPPROVED AND ARE NOT TO BE USED FOR ANY TYPE OF CONSTRUCTION OR THE ACQUISITION OF RIGHT OF WAY.

Printed by gmadlin 11/13/2015 4:35:22 PM BVSO S-Line-02-2C.dgn

BVSO S-Line Freight-2-2D



Dc = 4°15'
 V Passenger
 TT = 20 mph
 Ex = 40 mph
 V Freight
 TT = 20 mph
 Ex = 30 mph

Dc = 10°00'
 V Passenger
 TT = N/A mph
 Ex = N/A mph
 Prop = 30 mph
 V Freight
 TT = N/A mph
 Ex = N/A mph
 Prop = 25 mph

Dc = 3°15'
 V Passenger
 TT = 25 mph
 Ex = 60 mph
 V Freight
 TT = 25 mph
 Ex = 50 mph

Dc = 6°00'
 V Passenger
 TT = 35 mph
 Ex = 40 mph
 V Freight
 TT = 35 mph
 Ex = 35 mph

Dc = 8°00'
 V Passenger
 TT = 20 mph
 Ex = 35 mph
 Prop = 35 mph
 V Freight
 TT = 20 mph
 Ex = 30 mph
 Prop = 30 mph

TO BOULEVARD STATION

MATCHLINE SEE SHEET BVSO S-Line Freight-2-2C

TO DOSWELL

BBRR

#15 T/O

N 1ST ST

#15 T/O

N 5TH ST

#15 C/O

#15 T/O

I-64

SUBSTATION

#15 C/O

#10 T/O

TO MAIN ST

HOSPITAL ST

MATCHLINE SEE SHEET BVSO S-Line Freight-2-2E

N 7TH ST

I-95



LEGEND	
DC2RVA TRACK	—
DC2RVA SHIFTED TRACK	—
DC2RVA STATION PLATFORM	—
R2R TRACK	—
MAINLINE RELOCATION TRACK	—
RETIRED TRACK	—
EXISTING TRACK	—
EXISTING RW	—

Revisions		
No.	Description	Date

DESIGNED BY			
DRAWN BY	Virginia Department of Rail and Public Transportation		
CHECKED BY	Washington D.C. to Richmond Southeast High Speed Rail		
DATE	11/17/2015		
SCALE	As Shown		
PROJECT NO.	DRAWING NO.	SHEET NO.	
	MM	11	

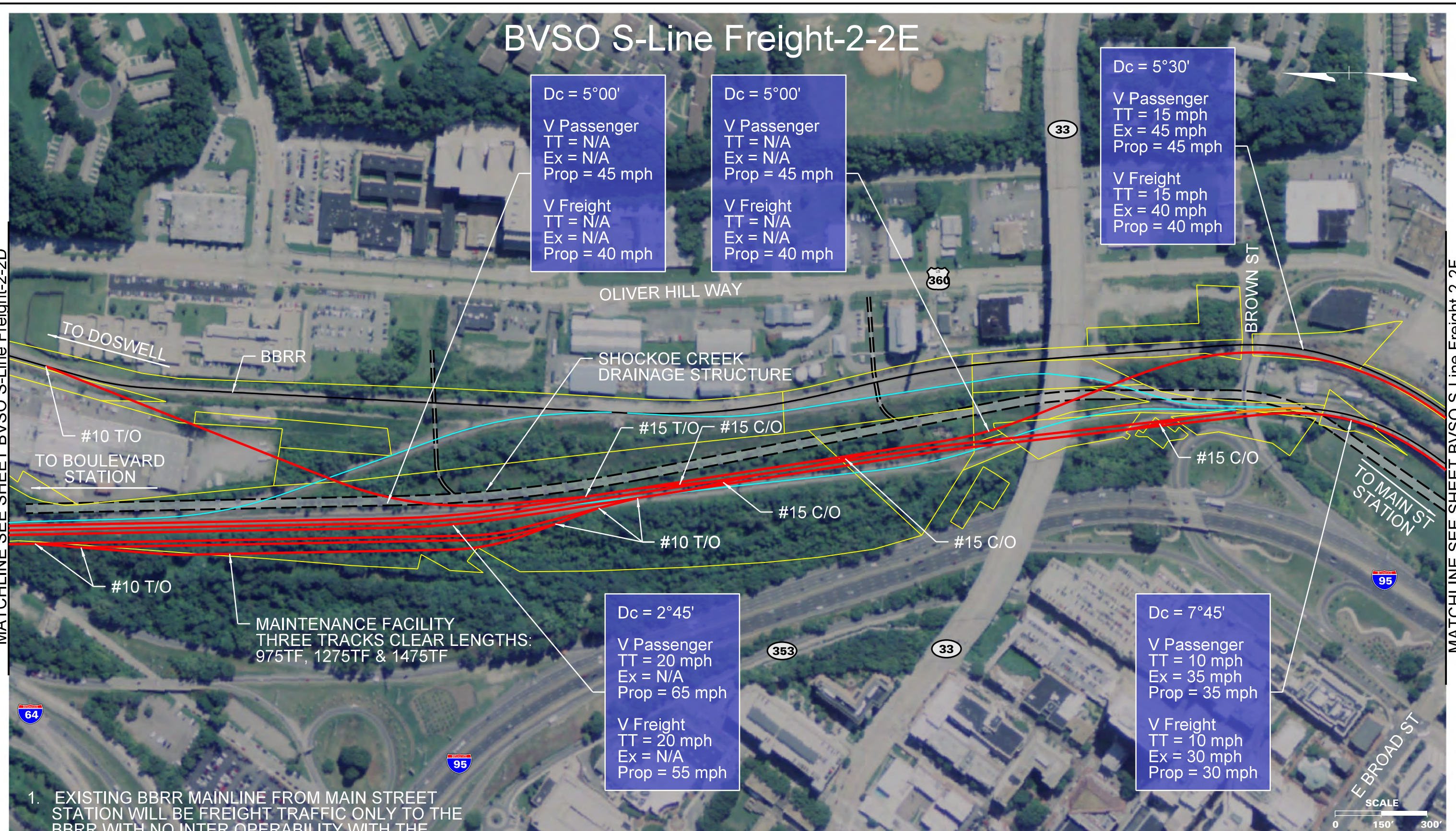
THESE PLANS ARE UNFINISHED AND UNAPPROVED AND ARE NOT TO BE USED FOR ANY TYPE OF CONSTRUCTION OR THE ACQUISITION OF RIGHT OF WAY.

Plotted by gmadlin 11/13/2015 4:35:28 PM
 BVSO S-Line-02-2D.dgn

BVSO S-Line Freight-2-2E

MATCHLINE SEE SHEET BVSO S-Line Freight-2-2D

MATCHLINE SEE SHEET BVSO S-Line Freight-2-2F



Dc = 5°00'
 V Passenger
 TT = N/A
 Ex = N/A
 Prop = 45 mph
 V Freight
 TT = N/A
 Ex = N/A
 Prop = 40 mph

Dc = 5°00'
 V Passenger
 TT = N/A
 Ex = N/A
 Prop = 45 mph
 V Freight
 TT = N/A
 Ex = N/A
 Prop = 40 mph

Dc = 5°30'
 V Passenger
 TT = 15 mph
 Ex = 45 mph
 Prop = 45 mph
 V Freight
 TT = 15 mph
 Ex = 40 mph
 Prop = 40 mph

Dc = 2°45'
 V Passenger
 TT = 20 mph
 Ex = N/A
 Prop = 65 mph
 V Freight
 TT = 20 mph
 Ex = N/A
 Prop = 55 mph

Dc = 7°45'
 V Passenger
 TT = 10 mph
 Ex = 35 mph
 Prop = 35 mph
 V Freight
 TT = 10 mph
 Ex = 30 mph
 Prop = 30 mph

MAINTENANCE FACILITY
 THREE TRACKS CLEAR LENGTHS:
 975TF, 1275TF & 1475TF

- EXISTING BBRR MAINLINE FROM MAIN STREET STATION WILL BE FREIGHT TRAFFIC ONLY TO THE BBRR WITH NO INTER OPERABILITY WITH THE BELLWOOD SUB.
- PROPOSED BBRR MAINLINE FROM MAIN STREET STATION WILL BE FREIGHT/PASSENGER WITH INTER OPERABILITY WITH THE BELLWOOD SUB.

THESE PLANS ARE UNFINISHED AND UNAPPROVED AND ARE NOT TO BE USED FOR ANY TYPE OF CONSTRUCTION OR THE ACQUISITION OF RIGHT OF WAY.

LEGEND	
DC2RVA TRACK	—
DC2RVA SHIFTED TRACK	—
DC2RVA STATION PLATFORM	—
R2R TRACK	—
MAINLINE RELOCATION TRACK	—
RETIRED TRACK	—
EXISTING TRACK	—
EXISTING R/W	—

Revisions		
No.	Description	Date

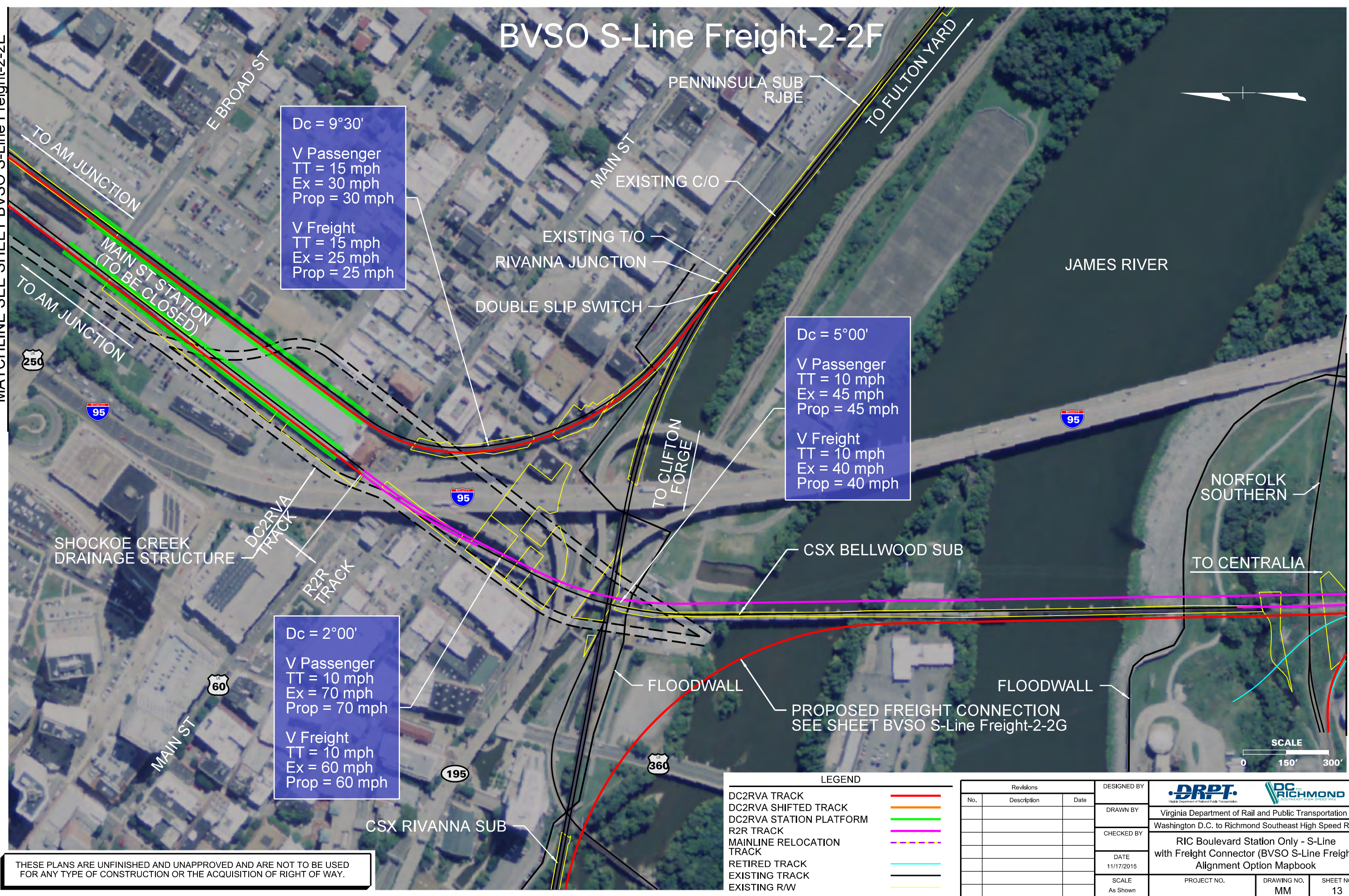
DESIGNED BY			
DRAWN BY	Virginia Department of Rail and Public Transportation		
CHECKED BY	Washington D.C. to Richmond Southeast High Speed Rail		
DATE	11/17/2015		
SCALE	As Shown		
PROJECT NO.	DRAWING NO.	SHEET NO.	
	MM	12	

Plotted by gmadlin 11/13/2015 4:35:54 PM BVSO S-Line-02-2E.dgn

BVSO S-Line Freight-2-2F

MATCHLINE SEE SHEET BVSO S-Line Freight-2-2E

MATCHLINE SEE SHEET BVSO S-Line Freight-3A



Dc = 9°30'
 V Passenger
 TT = 15 mph
 Ex = 30 mph
 Prop = 30 mph
 V Freight
 TT = 15 mph
 Ex = 25 mph
 Prop = 25 mph

Dc = 5°00'
 V Passenger
 TT = 10 mph
 Ex = 45 mph
 Prop = 45 mph
 V Freight
 TT = 10 mph
 Ex = 40 mph
 Prop = 40 mph

Dc = 2°00'
 V Passenger
 TT = 10 mph
 Ex = 70 mph
 Prop = 70 mph
 V Freight
 TT = 10 mph
 Ex = 60 mph
 Prop = 60 mph

LEGEND

DC2RVA TRACK	—
DC2RVA SHIFTED TRACK	—
DC2RVA STATION PLATFORM	—
R2R TRACK	—
MAINLINE RELOCATION TRACK	—
RETIRED TRACK	—
EXISTING TRACK	—
EXISTING R/W	—

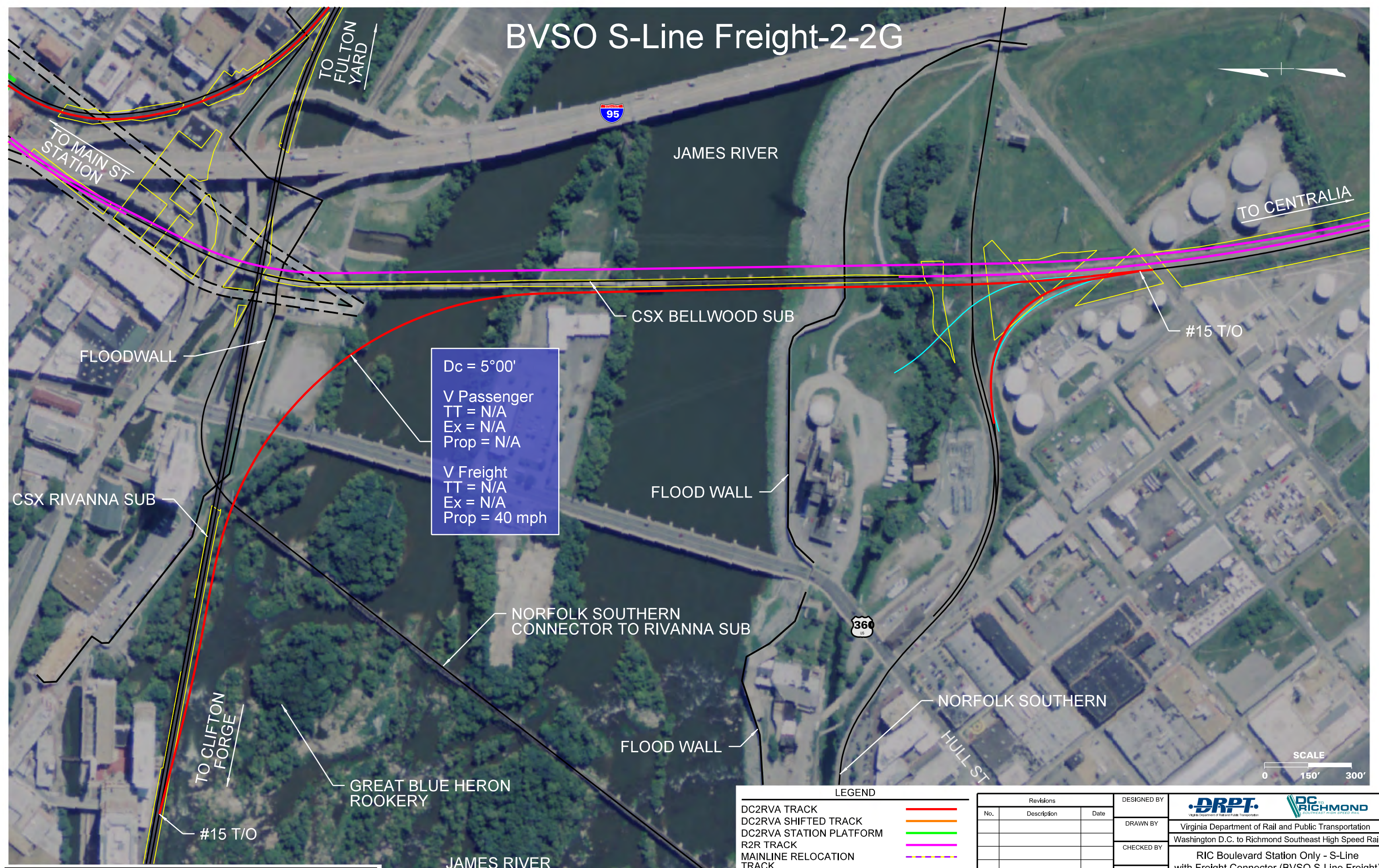
Revisions		
No.	Description	Date

DESIGNED BY			
DRAWN BY	Virginia Department of Rail and Public Transportation		
CHECKED BY	Washington D.C. to Richmond Southeast High Speed Rail		
DATE	11/17/2015		
SCALE	As Shown		
PROJECT NO.	DRAWING NO.	SHEET NO.	
	MM	13	

THESE PLANS ARE UNFINISHED AND UNAPPROVED AND ARE NOT TO BE USED FOR ANY TYPE OF CONSTRUCTION OR THE ACQUISITION OF RIGHT OF WAY.

Plotted by gmadlin 11/13/2015 4:35:40 PM BVSO S-Line-02-2F.dgn

BVSO S-Line Freight-2-2G



Dc = 5°00'
 V Passenger
 TT = N/A
 Ex = N/A
 Prop = N/A

 V Freight
 TT = N/A
 Ex = N/A
 Prop = 40 mph

LEGEND

DC2RVA TRACK	—
DC2RVA SHIFTED TRACK	—
DC2RVA STATION PLATFORM	—
R2R TRACK	—
MAINLINE RELOCATION TRACK	—
RETIRED TRACK	—
EXISTING TRACK	—
EXISTING RW	—

Revisions		
No.	Description	Date

DESIGNED BY	DRPT Virginia Department of Rail and Public Transportation
DRAWN BY	Virginia Department of Rail and Public Transportation
CHECKED BY	Washington D.C. to Richmond Southeast High Speed Rail
DATE	11/17/2015
SCALE	As Shown
PROJECT NO.	DRAWING NO. MM
	SHEET NO. 14

THESE PLANS ARE UNFINISHED AND UNAPPROVED AND ARE NOT TO BE USED FOR ANY TYPE OF CONSTRUCTION OR THE ACQUISITION OF RIGHT OF WAY.

Plotted by gmadlin 11/13/2015 4:35:46 PM
 BVSO S-Line-02-20.dgn

BVSO S-Line Freight-3A

JAMES RIVER



NORFOLK SOUTHERN

2 - R2R TRACKS
(1 EXIST AND 1 PROP)

#20 C/O

TO CENTRALIA

#20 C/O

#10 T/O

TO MAIN ST STATION

MATCHLINE SEE BVSO S-Line Freight-2-1F

PROPOSED FREIGHT CONNECTION
SEE SHEET BVSO S-Line Freight-2-2G

MATCHLINE SEE SHEET BVSO S-Line Freight-3B

E 4TH ST

MAURY ST



LEGEND

- DC2RVA TRACK —
- DC2RVA SHIFTED TRACK —
- DC2RVA STATION PLATFORM —
- R2R TRACK —
- MAINLINE RELOCATION TRACK —
- RETIRED TRACK —
- EXISTING TRACK —
- EXISTING RW —

Revisions		
No.	Description	Date

DESIGNED BY	
DRAWN BY	
CHECKED BY	
DATE	11/17/2015
SCALE	As Shown

Virginia Department of Rail and Public Transportation

Richmond
Virginia

Washington D.C. to Richmond Southeast High Speed Rail

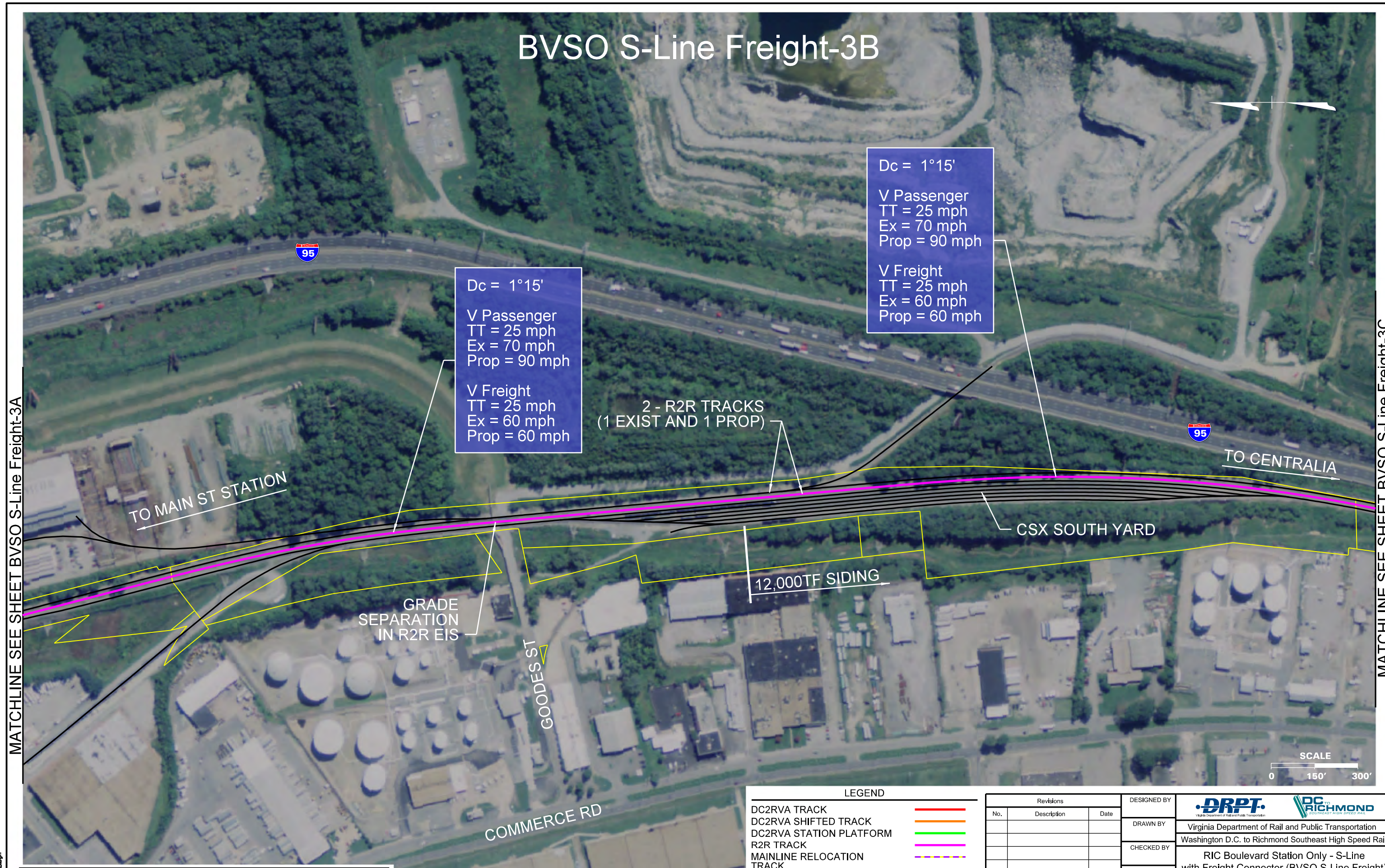
RIC Boulevard Station Only - S-Line
with Freight Connector (BVSO S-Line Freight)
Alignment Option Mapbook

PROJECT NO.	DRAWING NO. MM	SHEET NO. 15
-------------	-------------------	-----------------

THESE PLANS ARE UNFINISHED AND UNAPPROVED AND ARE NOT TO BE USED FOR ANY TYPE OF CONSTRUCTION OR THE ACQUISITION OF RIGHT OF WAY.

Plotted by: gmadlin 11/13/2015 4:35:51 PM
BVSO S-Line-03A.dgn

BVSO S-Line Freight-3B



Dc = 1°15'
 V Passenger
 TT = 25 mph
 Ex = 70 mph
 Prop = 90 mph
 V Freight
 TT = 25 mph
 Ex = 60 mph
 Prop = 60 mph

Dc = 1°15'
 V Passenger
 TT = 25 mph
 Ex = 70 mph
 Prop = 90 mph
 V Freight
 TT = 25 mph
 Ex = 60 mph
 Prop = 60 mph

2 - R2R TRACKS
 (1 EXIST AND 1 PROP)

TO MAIN ST STATION

TO CENTRALIA

CSX SOUTH YARD

12,000TF SIDING

GRADE SEPARATION
 IN R2R EIS

GOODES ST

COMMERCE RD



MATCHLINE SEE SHEET BVSO S-Line Freight-3A

MATCHLINE SEE SHEET BVSO S-Line Freight-3C

Plotted by gmadlin 11/13/2015 4:35:58 PM
 BVSO S-Line-03B.dgn

THESE PLANS ARE UNFINISHED AND UNAPPROVED AND ARE NOT TO BE USED FOR ANY TYPE OF CONSTRUCTION OR THE ACQUISITION OF RIGHT OF WAY.

LEGEND	
DC2RVA TRACK	
DC2RVA SHIFTED TRACK	
DC2RVA STATION PLATFORM	
R2R TRACK	
MAINLINE RELOCATION TRACK	
RETIRED TRACK	
EXISTING TRACK	
EXISTING RW	

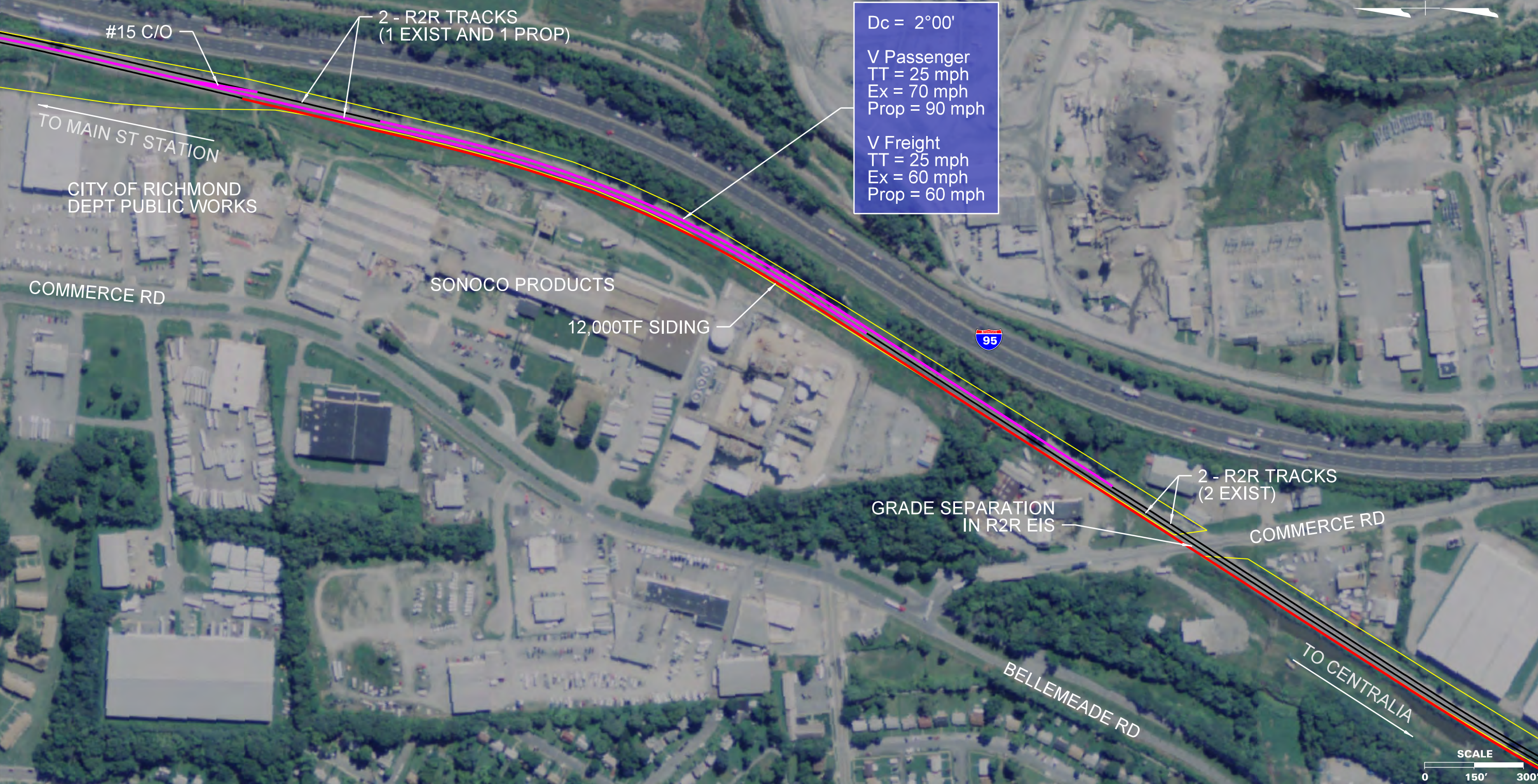
Revisions		
No.	Description	Date

DESIGNED BY			
DRAWN BY	Virginia Department of Rail and Public Transportation		
CHECKED BY	Washington D.C. to Richmond Southeast High Speed Rail		
DATE	11/17/2015		
SCALE	As Shown		
PROJECT NO.	DRAWING NO.	SHEET NO.	
	MM	16	

BVSO S-Line Freight-3C

MATCHLINE SEE SHEET BVSO S-Line Freight-3B

MATCHLINE SEE SHEET BVSO S-Line Freight-3D



THESE PLANS ARE UNFINISHED AND UNAPPROVED AND ARE NOT TO BE USED FOR ANY TYPE OF CONSTRUCTION OR THE ACQUISITION OF RIGHT OF WAY.

LEGEND	
DC2RVA TRACK	—
DC2RVA SHIFTED TRACK	—
DC2RVA STATION PLATFORM	—
R2R TRACK	—
MAINLINE RELOCATION TRACK	—
RETIRED TRACK	—
EXISTING TRACK	—
EXISTING RW	—

Revisions		
No.	Description	Date

DESIGNED BY			
DRAWN BY	Virginia Department of Rail and Public Transportation		
CHECKED BY	Washington D.C. to Richmond Southeast High Speed Rail		
DATE	RIC Boulevard Station Only - S-Line with Freight Connector (BVSO S-Line Freight) Alignment Option Mapbook		
SCALE	PROJECT NO.	DRAWING NO.	SHEET NO.
As Shown		MM	17

Plotted by gmadlin 11/13/2015 4:36:04 PM BVSO S-Line-03C.dgn

BVSO S-Line Freight-3D



ALLEGHANY WAREHOUSES

2 - R2R TRACKS
(2 EXIST)

GRADE SEPARATION
IN R2R EIS

RUFFIN RD

TO CENTRALIA

12,000TF SIDING

12,000TF SIDING

POWER #15 T/O

SCALE

0 150' 300'

MATCHLINE SEE SHEET BVSO S-Line Freight-3C

MATCHLINE SEE SHEET BVSO S-Line Freight-3E

Dc = 1°00'

V Passenger
TT = 25 mph
Ex = 85 mph
Prop = 90 mph

V Freight
TT = 25 mph
Ex = 60 mph
Prop = 60 mph

LEGEND

- DC2RVA TRACK —
- DC2RVA SHIFTED TRACK —
- DC2RVA STATION PLATFORM —
- R2R TRACK —
- MAINLINE RELOCATION TRACK —
- RETIRED TRACK —
- EXISTING TRACK —
- EXISTING R/W —

Revisions		
No.	Description	Date

DESIGNED BY			
DRAWN BY	Virginia Department of Rail and Public Transportation		
CHECKED BY	Washington D.C. to Richmond Southeast High Speed Rail		
DATE	RIC Boulevard Station Only - S-Line with Freight Connector (BVSO S-Line Freight) Alignment Option Mapbook		
SCALE	PROJECT NO.	DRAWING NO.	SHEET NO.
As Shown		MM	18

THESE PLANS ARE UNFINISHED AND UNAPPROVED AND ARE NOT TO BE USED FOR ANY TYPE OF CONSTRUCTION OR THE ACQUISITION OF RIGHT OF WAY.

Plotted by gmadlin 11/13/2015 4:36:00 PM BVSO S-Line-03D.dgn

BVSO S-Line Freight-3E

PHILLIP MORRIS USA

161

TO MAIN ST STATION

TO CENTRALIA

2 - R2R TRACKS
(2 EXIST)

#20 C/O

#20 C/O

GRADE SEPARATION
IN R2R EIS

BELLS RD

DALE AVE



MATCHLINE SEE SHEET BVSO S-Line Freight-3D

MATCHLINE SEE SHEET BVSO S-Line Freight-3F

LEGEND

- DC2RVA TRACK —
- DC2RVA SHIFTED TRACK —
- DC2RVA STATION PLATFORM —
- R2R TRACK —
- MAINLINE RELOCATION TRACK —
- RETIRED TRACK —
- EXISTING TRACK —
- EXISTING R/W —

Revisions		
No.	Description	Date

DESIGNED BY			
DRAWN BY	Virginia Department of Rail and Public Transportation		
CHECKED BY	Washington D.C. to Richmond Southeast High Speed Rail		
DATE	11/17/2015		
SCALE	As Shown		
PROJECT NO.	DRAWING NO.	SHEET NO.	
	MM	19	

THESE PLANS ARE UNFINISHED AND UNAPPROVED AND ARE NOT TO BE USED FOR ANY TYPE OF CONSTRUCTION OR THE ACQUISITION OF RIGHT OF WAY.

BVSO S-Line Freight-3F

TRENTON AVE

DUPONT

TO MAIN ST STATION

TO CENTRALIA

2 - R2R TRACKS
(2 EXIST)

SCALE

0 150' 300'

MATCHLINE SEE SHEET BVSO S-Line Freight-3E


MATCHLINE SEE SHEET BVSO S-Line Freight-3G

THESE PLANS ARE UNFINISHED AND UNAPPROVED AND ARE NOT TO BE USED FOR ANY TYPE OF CONSTRUCTION OR THE ACQUISITION OF RIGHT OF WAY.

LEGEND

- DC2RVA TRACK —
- DC2RVA SHIFTED TRACK —
- DC2RVA STATION PLATFORM —
- R2R TRACK —
- MAINLINE RELOCATION TRACK - - -
- RETIRED TRACK —
- EXISTING TRACK —
- EXISTING RW —

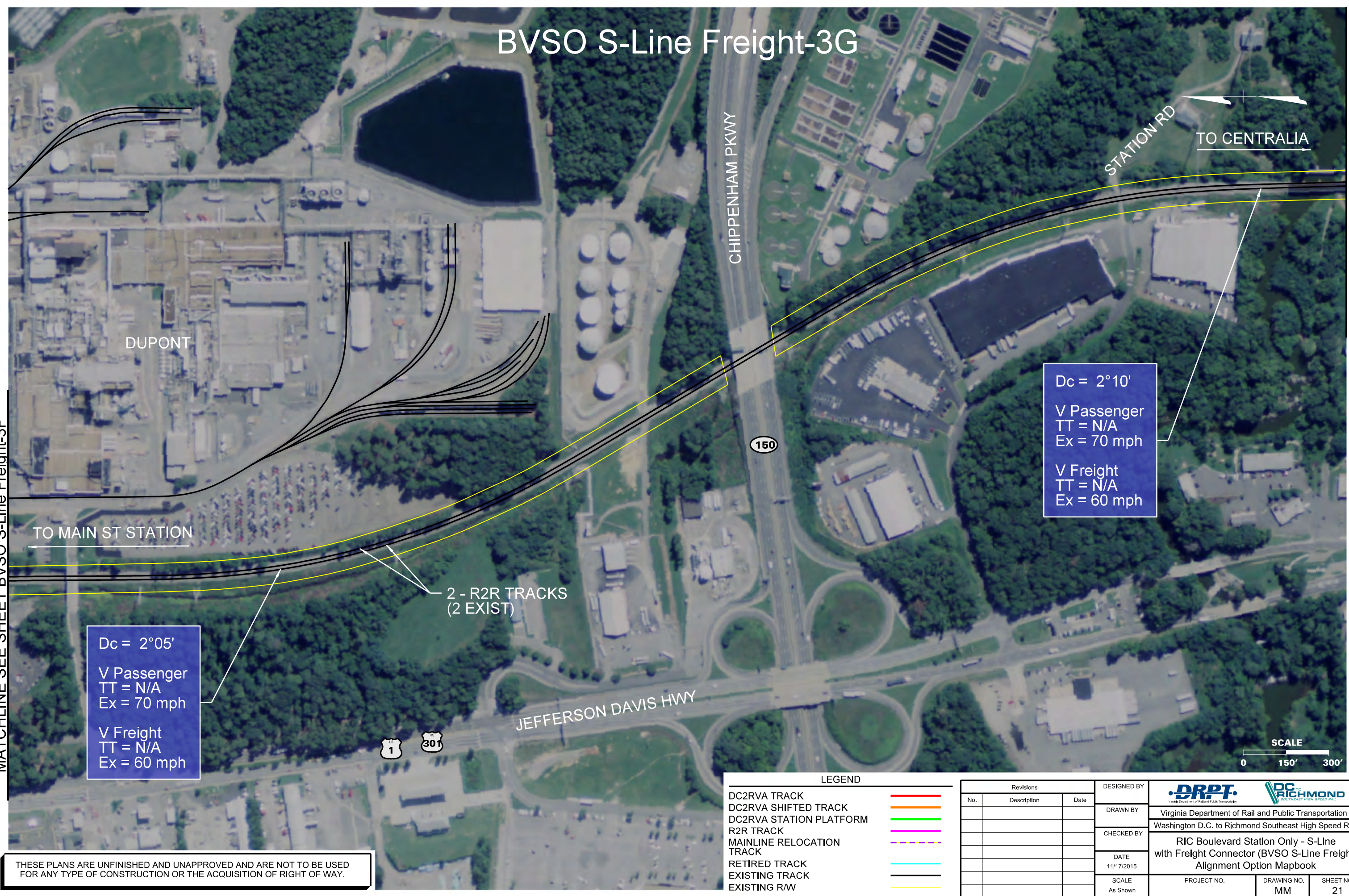
Revisions		
No.	Description	Date

DESIGNED BY	 Virginia Department of Rail and Public Transportation		
DRAWN BY	Virginia Department of Rail and Public Transportation Washington D.C. to Richmond Southeast High Speed Rail		
CHECKED BY	RIC Boulevard Station Only - S-Line with Freight Connector (BVSO S-Line Freight) Alignment Option Mapbook		
DATE	11/17/2015	PROJECT NO.	DRAWING NO.
SCALE	As Shown	MM	SHEET NO.
			20

BVSO S-Line Freight-3G

MATCHLINE SEE SHEET BVSO S-Line Freight-3F

MATCHLINE SEE SHEET BVSO S-Line Freight-3H



Dc = 2°05'
 V Passenger
 TT = N/A
 Ex = 70 mph

 V Freight
 TT = N/A
 Ex = 60 mph

Dc = 2°10'
 V Passenger
 TT = N/A
 Ex = 70 mph

 V Freight
 TT = N/A
 Ex = 60 mph

2 - R2R TRACKS
(2 EXIST)

TO MAIN ST STATION

STATION RD
 TO CENTRALIA



LEGEND	
DC2RVA TRACK	—
DC2RVA SHIFTED TRACK	—
DC2RVA STATION PLATFORM	—
R2R TRACK	—
MAINLINE RELOCATION TRACK	—
RETIRED TRACK	—
EXISTING TRACK	—
EXISTING RW	—

Revisions		
No.	Description	Date

DESIGNED BY			
DRAWN BY	Virginia Department of Rail and Public Transportation		
CHECKED BY	Washington D.C. to Richmond Southeast High Speed Rail		
DATE	11/17/2015		
SCALE	As Shown		
PROJECT NO.	DRAWING NO.	SHEET NO.	
	MM	21	

THESE PLANS ARE UNFINISHED AND UNAPPROVED AND ARE NOT TO BE USED FOR ANY TYPE OF CONSTRUCTION OR THE ACQUISITION OF RIGHT OF WAY.

Plotted by gmadlin 11/13/2015 4:36:29 PM BVSO S-Line-036.dgn

BVSO S-Line Freight-3H



TO CENTRALIA

MARINA DR



TO MAIN ST STATION

Dc = 2°00'
 V Passenger
 TT = N/A
 Ex = 70 mph
 Prop = 70 mph

 V Freight
 TT = N/A
 Ex = 60 mph
 Prop = 60 mph

2 - R2R TRACKS
(2 PROP)

2 - R2R TRACKS
(2 EXIST)

#20 C/O

#20 C/O

Dc = 2°05'
 V Passenger
 TT = N/A
 Ex = 70 mph
 Prop = 70 mph

 V Freight
 TT = N/A
 Ex = 60 mph
 Prop = 60 mph



MATCHLINE SEE SHEET BVSO S-Line Freight-3G

MATCHLINE SEE SHEET BVSO S-Line Freight-3I

LEGEND

- DC2RVA TRACK —
- DC2RVA SHIFTED TRACK —
- DC2RVA STATION PLATFORM —
- R2R TRACK —
- MAINLINE RELOCATION TRACK —
- RETIRED TRACK —
- EXISTING TRACK —
- EXISTING R/W —

Revisions		
No.	Description	Date

DESIGNED BY			
DRAWN BY	Virginia Department of Rail and Public Transportation		
CHECKED BY	Washington D.C. to Richmond Southeast High Speed Rail		
DATE	11/17/2015		
SCALE	As Shown		
PROJECT NO.	DRAWING NO.	SHEET NO.	
	MM	22	

THESE PLANS ARE UNFINISHED AND UNAPPROVED AND ARE NOT TO BE USED FOR ANY TYPE OF CONSTRUCTION OR THE ACQUISITION OF RIGHT OF WAY.

Plotted by: gmadlin 11/13/2015 4:36:35 PM BVSO S-Line-03H.dgn

BVSO S-Line Freight-3I

TO MAIN ST STATION

2 - R2R TRACKS
(2 PROP)

Dc = 2°00'
 V Passenger
 TT = N/A
 Ex = 70 mph
 Prop = 70 mph

 V Freight
 TT = N/A
 Ex = 60 mph
 Prop = 60 mph

Dc = 2°05'
 V Passenger
 TT = N/A
 Ex = 70 mph
 Prop = 70 mph

 V Freight
 TT = N/A
 Ex = 60 mph
 Prop = 60 mph

TO CENTRALIA

MATCHLINE SEE SHEET BVSO S-Line Freight-3H

MATCHLINE SEE SHEET BVSO S-Line Freight-3J

ELLIHAM AVE

JEFFERSON DAVIS HWY



LEGEND

- DC2RVA TRACK —
- DC2RVA SHIFTED TRACK —
- DC2RVA STATION PLATFORM —
- R2R TRACK —
- MAINLINE RELOCATION TRACK —
- RETIRED TRACK —
- EXISTING TRACK —
- EXISTING RW —

Revisions		
No.	Description	Date

DESIGNED BY	
DRAWN BY	
CHECKED BY	
DATE	11/17/2015
SCALE	As Shown

Virginia Department of Rail and Public Transportation

Richmond

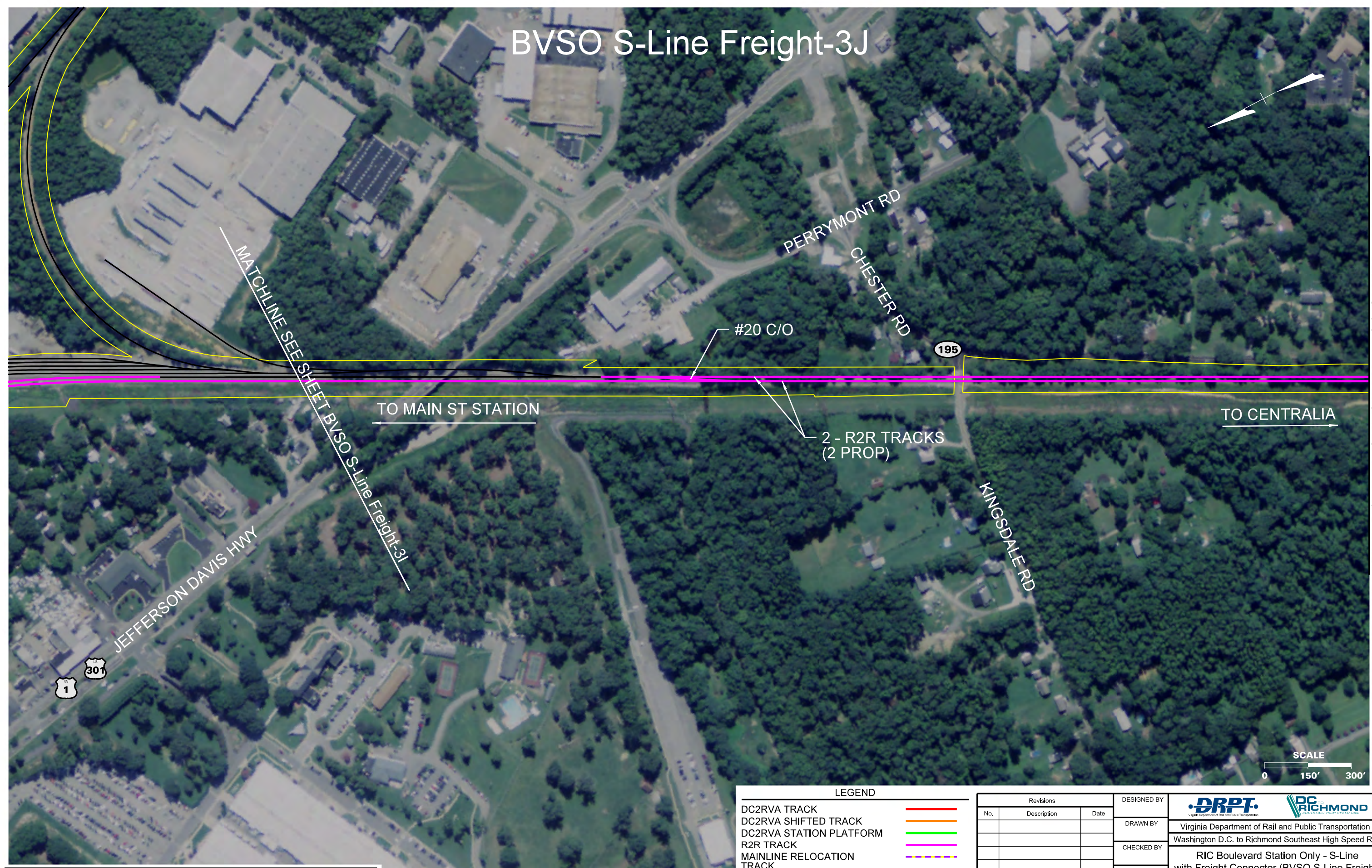
Washington D.C. to Richmond Southeast High Speed Rail

**RIC Boulevard Station Only - S-Line
with Freight Connector (BVSO S-Line Freight)
Alignment Option Mapbook**

PROJECT NO.	DRAWING NO. MM	SHEET NO. 23
-------------	-------------------	-----------------

THESE PLANS ARE UNFINISHED AND UNAPPROVED AND ARE NOT TO BE USED FOR ANY TYPE OF CONSTRUCTION OR THE ACQUISITION OF RIGHT OF WAY.

BVSO S-Line Freight-3J



MATCHLINE SEE SHEET BVSO S-Line Freight-3J

MATCHLINE SEE SHEET BVSO S-Line Freight-3K

TO MAIN ST STATION

TO CENTRALIA

#20 C/O

2 - R2R TRACKS
(2 PROP)

JEFFERSON DAVIS HWY

PERRYMONT RD
CHESTER RD

KINGSDALE RD



LEGEND	
DC2RVA TRACK	—
DC2RVA SHIFTED TRACK	—
DC2RVA STATION PLATFORM	—
R2R TRACK	—
MAINLINE RELOCATION TRACK	—
RETIRED TRACK	—
EXISTING TRACK	—
EXISTING R/W	—

Revisions		
No.	Description	Date

DESIGNED BY			
DRAWN BY	Virginia Department of Rail and Public Transportation		
CHECKED BY	Washington D.C. to Richmond Southeast High Speed Rail		
DATE	11/17/2015		
SCALE	As Shown		
PROJECT NO.	DRAWING NO.	SHEET NO.	
	MM	24	

THESE PLANS ARE UNFINISHED AND UNAPPROVED AND ARE NOT TO BE USED FOR ANY TYPE OF CONSTRUCTION OR THE ACQUISITION OF RIGHT OF WAY.

Plotted by gmadlin 11/13/2015 4:36:48 PM
 BVSO S-Line-03.dgn

BVSO S-Line Freight-3K

MATCHLINE SEE SHEET BVSO S-Line Freight-3J

MATCHLINE SEE SHEET BVSO S-Line Freight-3L

TO MAIN ST STATION

TO CENTRALIA

2 - R2R TRACKS
(2 PROP)

Dc = 2°30'
 V Passenger
 TT = N/A
 Ex = 70 mph
 Prop = 70 mph

 V Freight
 TT = N/A
 Ex = 60 mph
 Prop = 60 mph



LEGEND	
DC2RVA TRACK	
DC2RVA SHIFTED TRACK	
DC2RVA STATION PLATFORM	
R2R TRACK	
MAINLINE RELOCATION TRACK	
RETIRED TRACK	
EXISTING TRACK	
EXISTING R/W	

Revisions		
No.	Description	Date

DESIGNED BY			
DRAWN BY	Virginia Department of Rail and Public Transportation		
CHECKED BY	Washington D.C. to Richmond Southeast High Speed Rail		
DATE	11/17/2015		
SCALE	As Shown		
PROJECT NO.	DRAWING NO.	SHEET NO.	
	MM	25	

THESE PLANS ARE UNFINISHED AND UNAPPROVED AND ARE NOT TO BE USED FOR ANY TYPE OF CONSTRUCTION OR THE ACQUISITION OF RIGHT OF WAY.

Printed by gmadlin 11/13/2015 4:36:56 PM BVSO S-Line-03K.dgn

BVSO S-Line Freight-3L

145

CHESTER RD

288

WORLD WAR II VETERANS MEMORIAL HWY

MATCHLINE SEE SHEET BVSO S-Line Freight-3M

MATCHLINE SEE SHEET BVSO S-Line Freight-3K

TO MAIN ST STATION

2 - R2R TRACKS
(2 PROP)

#20 C/O

TO CENTRALIA

EXIST C/O

OLD LN

Dc = 2°30'
 V Passenger
 TT = N/A
 Ex = 70 mph
 Prop = 70 mph
 V Freight
 TT = N/A
 Ex = 60 mph
 Prop = 60 mph

Dc = 4°15'
 V Passenger
 TT = N/A
 Ex = 50 mph
 Prop = 50 mph
 V Freight
 TT = N/A
 Ex = 40 mph
 Prop = 40 mph



LEGEND	
DC2RVA TRACK	
DC2RVA SHIFTED TRACK	
DC2RVA STATION PLATFORM	
R2R TRACK	
MAINLINE RELOCATION TRACK	
RETIRED TRACK	
EXISTING TRACK	
EXISTING R/W	

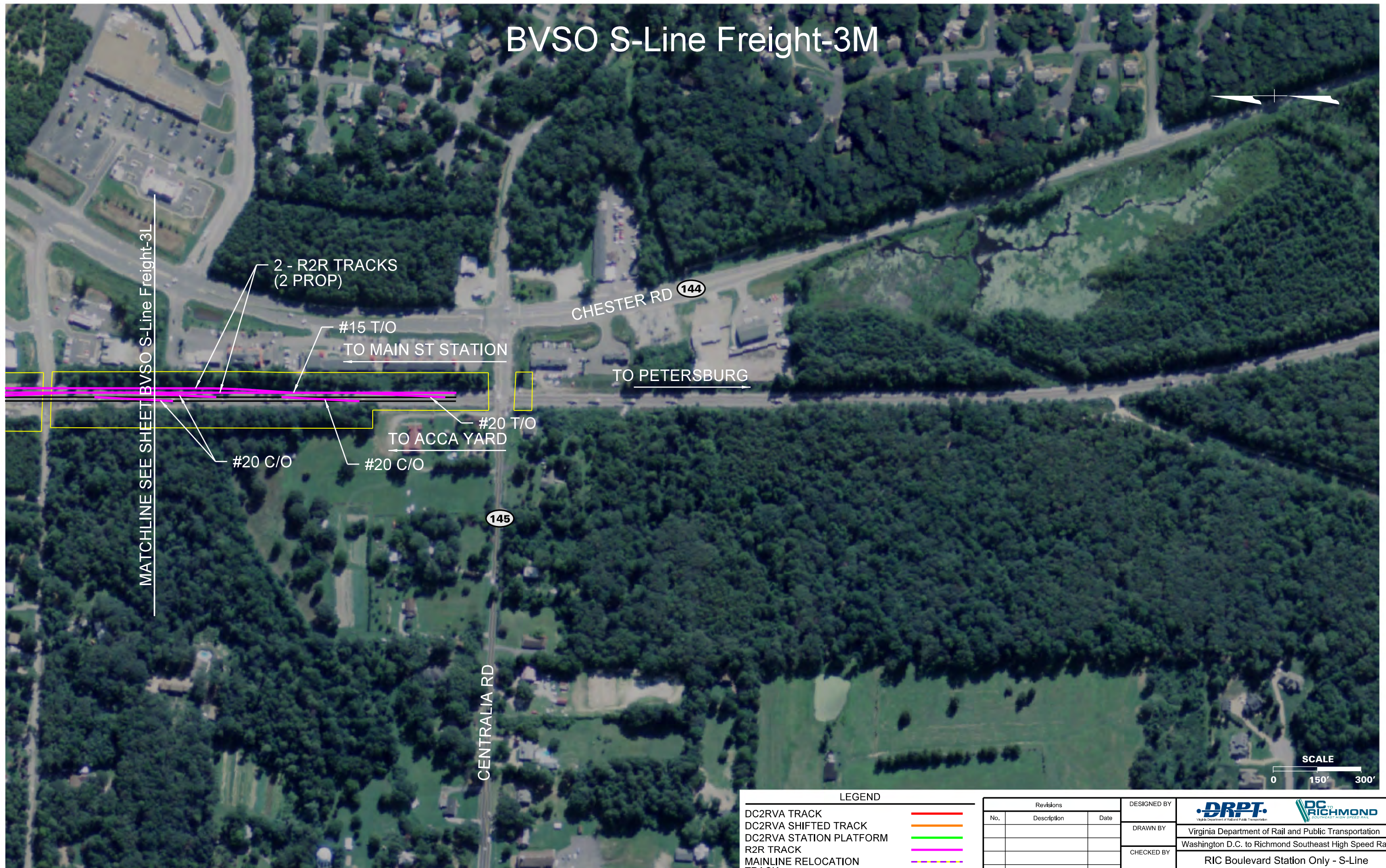
Revisions		
No.	Description	Date

DESIGNED BY	
DRAWN BY	Virginia Department of Rail and Public Transportation
CHECKED BY	Washington D.C. to Richmond Southeast High Speed Rail
DATE	11/17/2015
SCALE	As Shown
PROJECT NO.	DRAWING NO. MM
	SHEET NO. 26

THESE PLANS ARE UNFINISHED AND UNAPPROVED AND ARE NOT TO BE USED FOR ANY TYPE OF CONSTRUCTION OR THE ACQUISITION OF RIGHT OF WAY.

Plotted by gmadlin 11/13/2015 4:37:05 PM
 BVSO S-Line-03L.dgn

BVSO S-Line Freight-3M



THESE PLANS ARE UNFINISHED AND UNAPPROVED AND ARE NOT TO BE USED FOR ANY TYPE OF CONSTRUCTION OR THE ACQUISITION OF RIGHT OF WAY.

LEGEND

- DC2RVA TRACK —
- DC2RVA SHIFTED TRACK —
- DC2RVA STATION PLATFORM —
- R2R TRACK —
- MAINLINE RELOCATION TRACK - - -
- RETIRED TRACK —
- EXISTING TRACK —
- EXISTING R/W —

Revisions		
No.	Description	Date

DESIGNED BY			
DRAWN BY			
CHECKED BY	Virginia Department of Rail and Public Transportation Washington D.C. to Richmond Southeast High Speed Rail		
DATE	RIC Boulevard Station Only - S-Line with Freight Connector (BVSO S-Line Freight) Alignment Option Mapbook		
SCALE	PROJECT NO.	DRAWING NO.	SHEET NO.
As Shown		MM	27