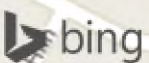


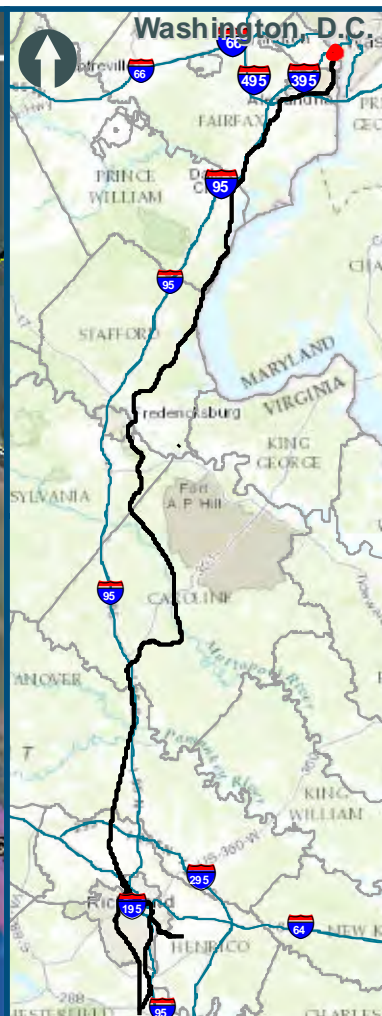
# Appendix A: Build Alternatives 1A, 1B, 1C

## Index Sheet 1 of 1



\\delman\GIS\_DATA\GIS\Projects\011645\_VA\DeptofRails-PublicTransportation\0230056\_RAPS-4\Map-Concept\Eng\map\_dosm\del\DEIS\Ch\_2\Ch\_2\_Appendices\Appendix\_C\DC2RVA\_AppendixC\Index\_11x17.mxd | Last Updated: 05-31-2017





0 100 200  
 Feet  
 1 inch = 200 feet  
 @ 11 x 17 inches  
 Projection: Lambert Conformal Conic  
 State Plane Virginia North FIPS 4501 Feet  
 North American Datum of 1983  
 Imagery/Basemap Source: 2015 Bing  
 Aerial Imagery; ESRI World Transportation

**Legend**

- Permanent Limits of Disturbance
- Temporary Limits of Disturbance
- CSXT Mileposts
- Track - Existing
- Stations
- Culverts
- Delineated Stream Impacts
- Delineated Streams
- Major River Impacts
- Waterbodies
- Delineated Wetlands
- Delineated Wetland Impacts
- Resource Protection Areas
- Resource Protection Area Impacts  
*(Virginia Department of Environmental Quality)*
- Impaired Waters
- CSXT ROW (County Parcel Data)
- City/County Parcels
- City/County Boundary

**Mapbook A-1  
 Potential Impacts to  
 Wetlands and Streams  
 Build Alternative 1A  
 Add Two Tracks  
 on the East**

\\dcis-main\gis\_data\GIS\Projects\0115-46\_VA Dept of Rail-Public Transportation\0239056\_RAPS-4AltDev-Concept\Eng\map\_docs\mxd\01EIS\Tech\_Reports\Natural\_Resources\Appendices\Appendix\_A\_Arlington\Mapbook\_11x17\_WEB.mxd | Last Updated: 08.22.2017



0 100 200  
 Feet  
 1 inch = 200 feet  
 @ 11 x 17 inches  
 Projection: Lambert Conformal Conic  
 State Plane Virginia North FIPS 4501 Feet  
 North American Datum of 1983  
 Imagery/Basemap Source: 2015 Bing  
 Aerial Imagery; ESRI World Transportation

**Legend**

- Permanent Limits of Disturbance
  - Temporary Limits of Disturbance
  - CSXT Mileposts
  - Track - Existing
  - Stations
  - Culverts
  - Delineated Stream Impacts
  - Delineated Streams
  - Major River Impacts
  - Waterbodies
  - Delineated Wetlands
  - Delineated Wetland Impacts
  - Resource Protection Areas
  - Resource Protection Area Impacts
  - Impaired Waters
  - CSXT ROW (County Parcel Data)
  - City/County Parcels
  - City/County Boundary
- (Virginia Department of Environmental Quality)*

**Mapbook A-1  
 Potential Impacts to  
 Wetlands and Streams  
 Build Alternative 1A  
 Add Two Tracks  
 on the East**

\\dcis-main\gis\_data\GIS\Projects\0115-45\_VA\_Dep\Rail-Public\Transportation\0239056\_RAPS-4\IT-Dev-Concept\Eng\map\_docs\mxd\01\Tech\_Reports\Natural\_Resources\Appendices\Appendix\_A\_Arlington\Web\_Version\Wetlands\_AppA\_RO2E\_Mapbook\_11x17\_WEB.mxd | Last Updated: 08.22.2017



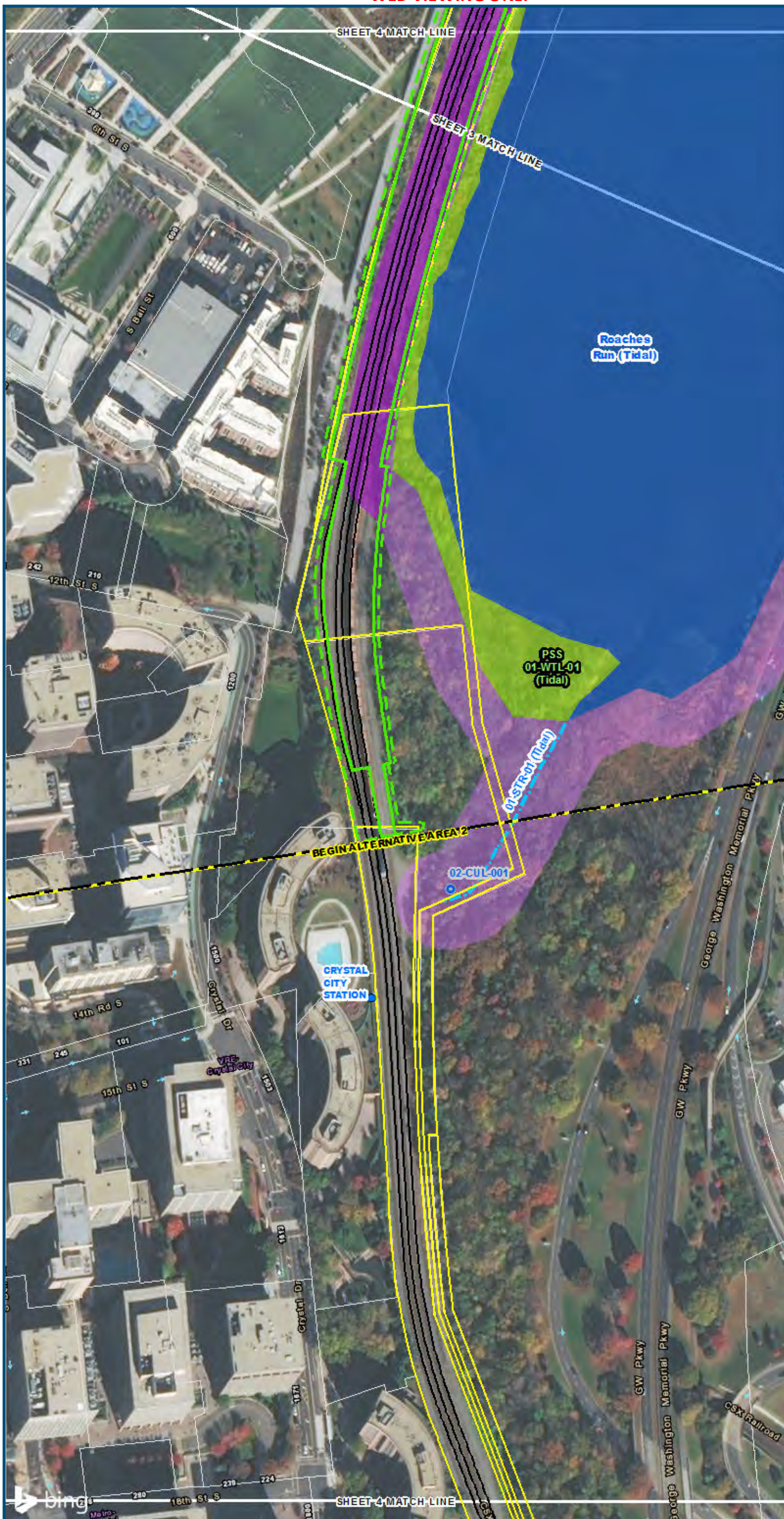
0 100 200  
 Feet  
 1 inch = 200 feet  
 @ 11 x 17 inches  
 Projection: Lambert Conformal Conic  
 State Plane Virginia North FIPS 4501 Feet  
 North American Datum of 1983  
 Imagery/Basemap Source: 2015 Bing  
 Aerial Imagery; ESRI World Transportation

**Legend**

- Permanent Limits of Disturbance
  - Temporary Limits of Disturbance
  - CSXT Mileposts
  - Track - Existing
  - Stations
  - Culverts
  - Delineated Stream Impacts
  - Delineated Streams
  - Major River Impacts
  - Waterbodies
  - Delineated Wetlands
  - Delineated Wetland Impacts
  - Resource Protection Areas
  - Resource Protection Area Impacts
  - Impaired Waters
  - CSXT ROW (County Parcel Data)
  - City/County Parcels
  - City/County Boundary
- (Virginia Department of Environmental Quality)*

**Mapbook A-1  
 Potential Impacts to  
 Wetlands and Streams  
 Build Alternative 1B  
 Add Two Tracks  
 on the West**

\\dcis-main\gis\_data\GIS\Projects\0115-46\_VA Dept of Rail-Public Transportation\0239056\_RAPS-4AltDev-Concept\Eng\map\_docs\mxd\0115-46\_VA Dept of Rail-Public Transportation\Natural Resources\Appendices\Appendix\_A\_Arlington\Mapbook\_11x17\_WEB.mxd | Last Updated: 08.22.2017



0 100 200  
 Feet  
 1 inch = 200 feet  
 @ 11 x 17 inches  
 Projection: Lambert Conformal Conic  
 State Plane Virginia North FIPS 4501 Feet  
 North American Datum of 1983  
 Imagery/Basemap Source: 2015 Bing  
 Aerial Imagery; ESRI World Transportation

**Legend**

- Permanent Limits of Disturbance
- Temporary Limits of Disturbance
- CSXT Mileposts
- Track - Existing
- Stations
- Culverts
- Delineated Stream Impacts
- Delineated Streams
- Major River Impacts
- Waterbodies
- Delineated Wetlands
- Delineated Wetland Impacts
- Resource Protection Areas
- Resource Protection Area Impacts
- Impaired Waters  
*(Virginia Department of Environmental Quality)*
- CSXT ROW (County Parcel Data)
- City/County Parcels
- City/County Boundary

**Mapbook A-1  
 Potential Impacts to  
 Wetlands and Streams  
 Build Alternative 1B  
 Add Two Tracks  
 on the West**

\\dcis-main\gis\_data\GIS\Projects\0115-46\_VA\_Dep\Rail-Public\Transportation\0239056\_RAPS-4\ITDev-Concept\Eng\map\_docs\mxd\01EIS\Tech\_Reports\Natural\_Resources\Appendices\Appendix\_A\_Arlington\Mapbook\_11x17\_WEB.mxd | Last Updated: 08.22.2017

**\*WEB VIEWING ONLY\***



0 100 200  
 Feet  
 1 inch = 200 feet  
 @ 11 x 17 inches  
 Projection: Lambert Conformal Conic  
 State Plane Virginia North FIPS 4501 Feet  
 North American Datum of 1983  
 Imagery/Basemap Source: 2015 Bing  
 Aerial Imagery; ESRI World Transportation

**Legend**

- Permanent Limits of Disturbance
  - Temporary Limits of Disturbance
  - CSXT Mileposts
  - Track - Existing
  - Stations
  - Culverts
  - Delineated Stream Impacts
  - Delineated Streams
  - Major River Impacts
  - Waterbodies
  - Delineated Wetlands
  - Delineated Wetland Impacts
  - Resource Protection Areas
  - Resource Protection Area Impacts
  - Impaired Waters
  - CSXT ROW (County Parcel Data)
  - City/County Parcels
  - City/County Boundary
- (Virginia  
 Department of  
 Environmental  
 Quality)*

**Mapbook A-1  
 Potential Impacts to  
 Wetlands and Streams  
 Build Alternative 1C  
 Add One Track East  
 and One Track West**

Sheet 5 of 6

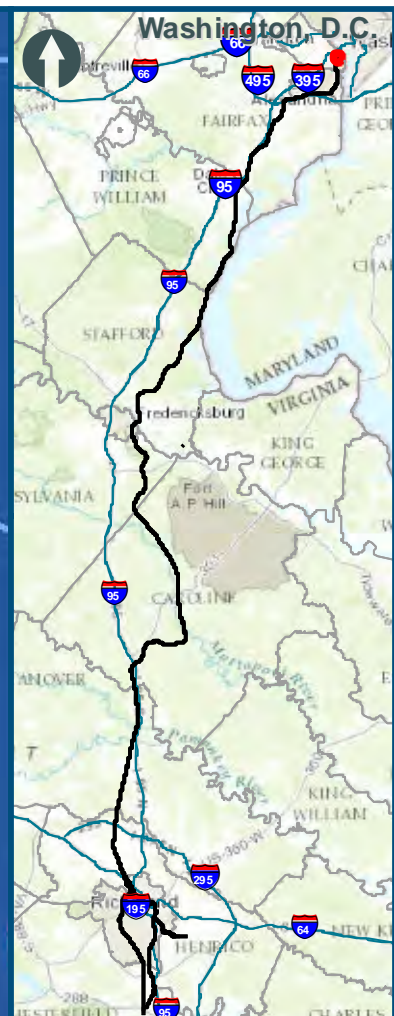
\\dc\is-main\gis\_data\GIS\Projects\0115-46\_VA\Dev\Rail-Public\Transportation\0239056\_RAPS-4\IT\Dev-Concept\Eng\map\_docs\mxd\01\IS\Tech\_Reports\Natural\_Resources\Appendices\Appendix\_A\_Arlington\Mapbook\_11x17\_WEB.mxd | Last Updated: 08/14/2017



[www.DC2RVArail.com](http://www.DC2RVArail.com)



**\*WEB VIEWING ONLY\***



0 100 200  
 Feet  
 1 inch = 200 feet  
 @ 11 x 17 inches  
 Projection: Lambert Conformal Conic  
 State Plane Virginia North FIPS 4501 Feet  
 North American Datum of 1983  
 Imagery/Basemap Source: 2015 Bing  
 Aerial Imagery; ESRI World Transportation

- Legend**
- Permanent Limits of Disturbance
  - Temporary Limits of Disturbance
  - CSXT Mileposts
  - Track - Existing
  - Stations
  - Culverts
  - Delineated Stream Impacts
  - Delineated Streams
  - Major River Impacts
  - Waterbodies
  - Delineated Wetlands
  - Delineated Wetland Impacts
  - Resource Protection Areas
  - Resource Protection Area Impacts
  - Impaired Waters
  - CSXT ROW (County Parcel Data)
  - City/County Parcels
  - City/County Boundary
- (Virginia Department of Environmental Quality)*

**Mapbook A-1**  
**Potential Impacts to Wetlands and Streams**  
**Build Alternative 1C**  
**Add One Track East and One Track West**

\\dcis-main\gis\_data\GIS\Projects\0115-46\_VA Dept of Rail-Public Transportation\02390566\_RAPS-4AltDev-Concept\Eng\map\_docs\mxd\01EIS\Tech\_Reports\Natural\_Resources\Appendices\Appendix\_A\_Arlington\Mapbook\_11X17\_WEB.mxd | Last Updated: 08/14/2017