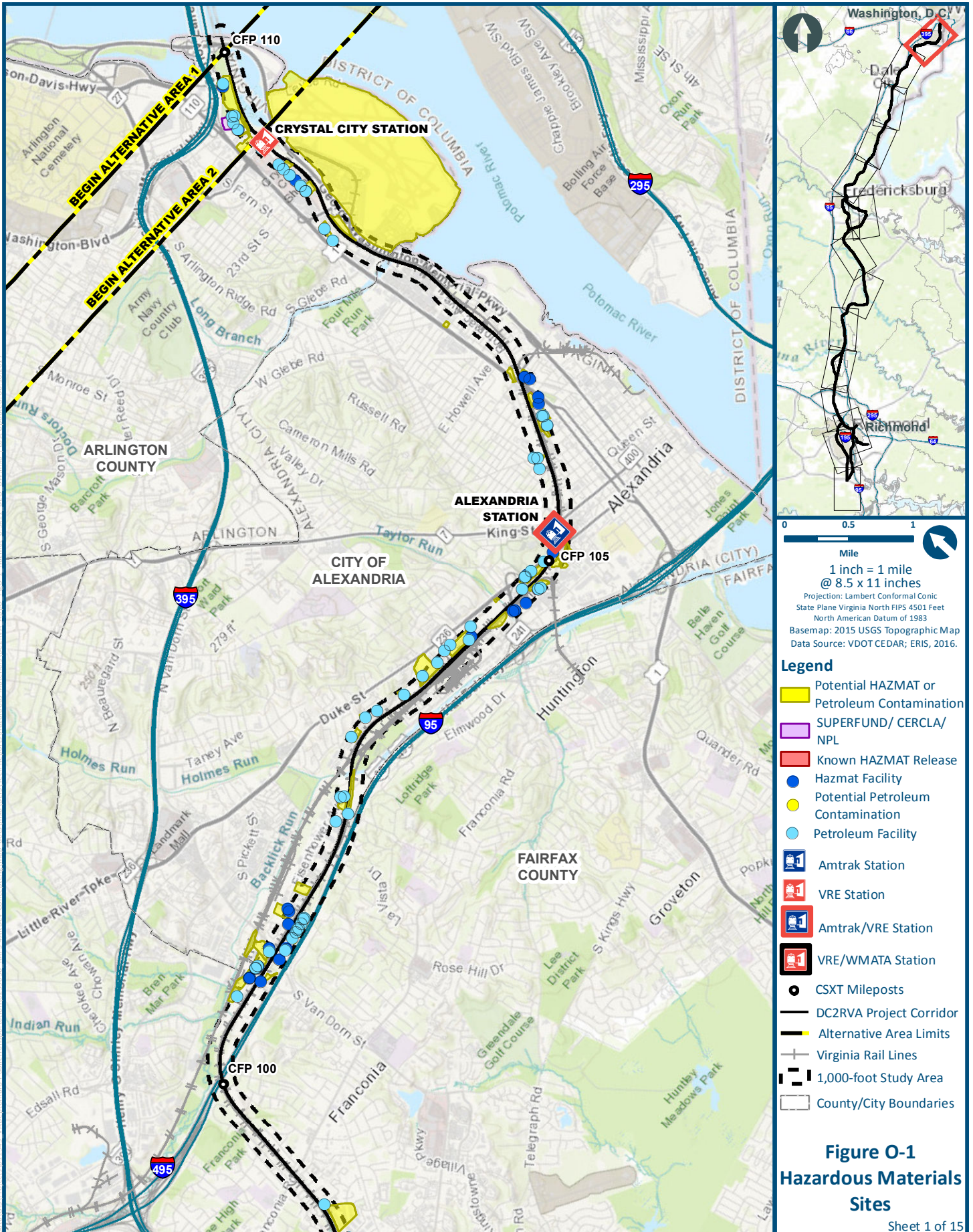


O HAZARDOUS MATERIALS SITE INFORMATION

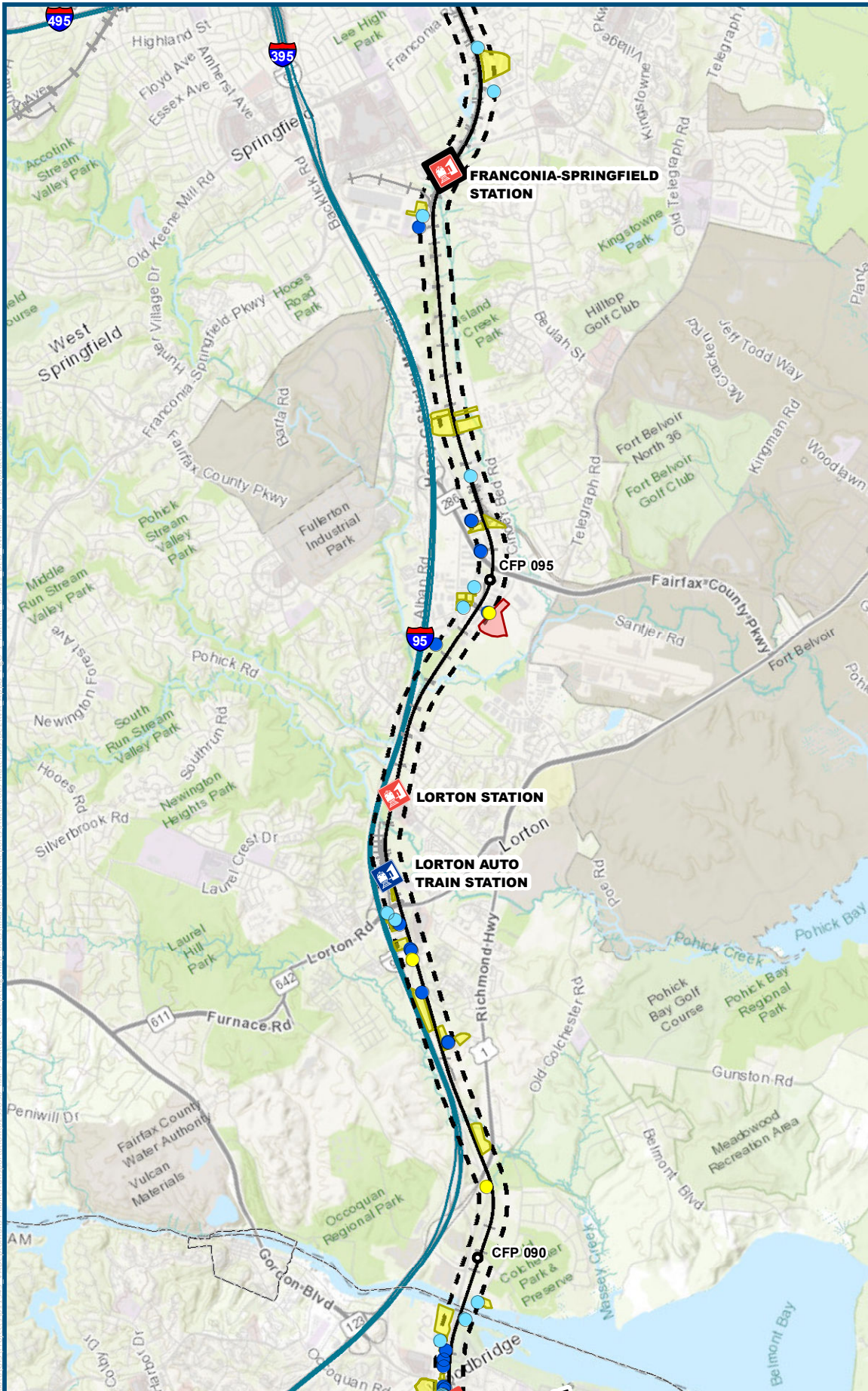




- Legend**
- Potential HAZMAT or Petroleum Contamination
 - SUPERFUND/ CERCLA/ NPL
 - Known HAZMAT Release
 - Hazmat Facility
 - Potential Petroleum Contamination
 - Petroleum Facility
 - Amtrak Station
 - VRE Station
 - Amtrak/VRE Station
 - VRE/WMATA Station
 - CSXT Mileposts
 - DC2RVA Project Corridor
 - Alternative Area Limits
 - Virginia Rail Lines
 - 1,000-foot Study Area
 - County/City Boundaries

Figure O-1
Hazardous Materials
Sites

Sheet 1 of 15

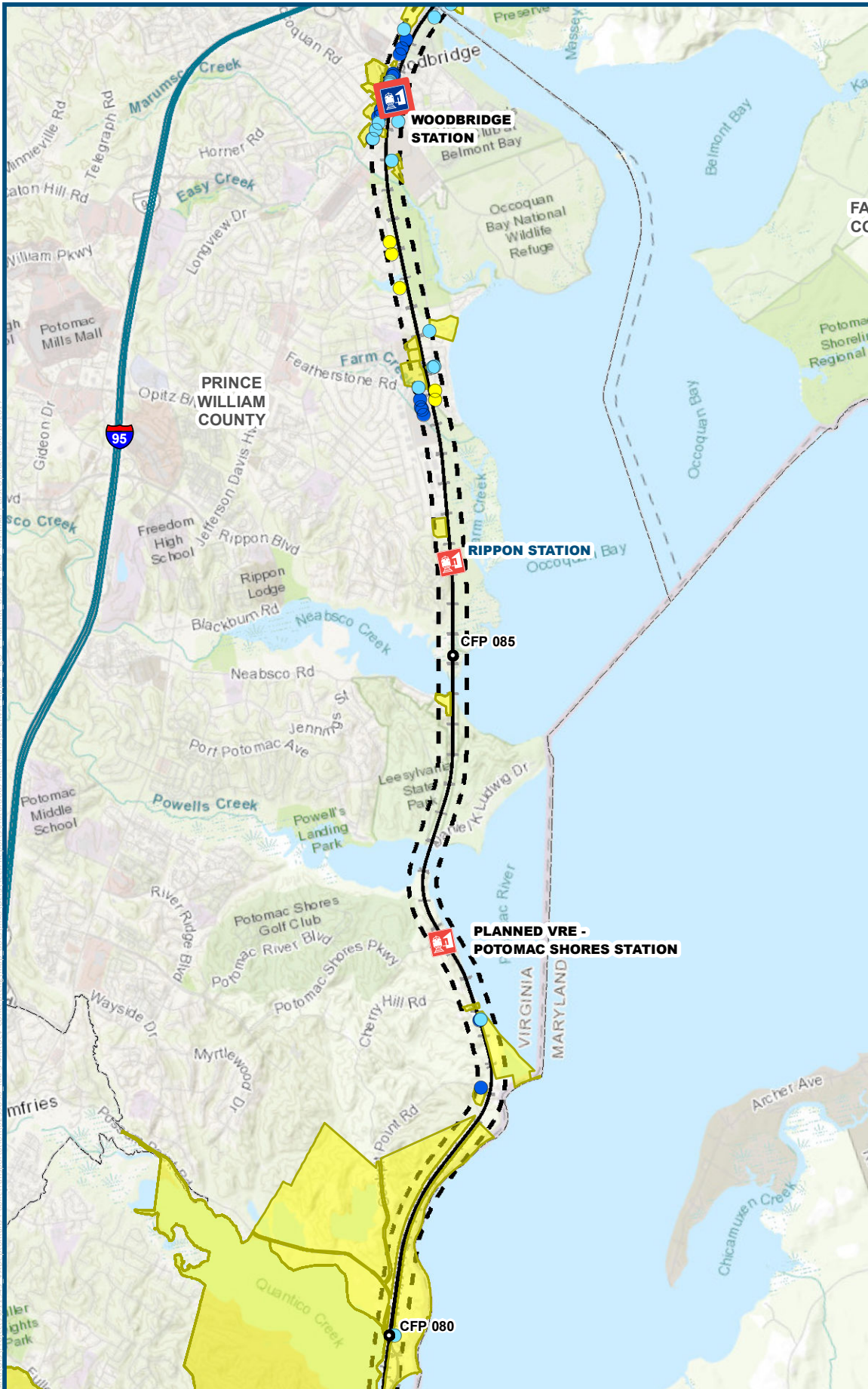


0 0.5 1
Mile
1 inch = 1 mile
@ 8.5 x 11 inches
Projection: Lambert Conformal Conic
State Plane Virginia North FIPS 4501 Feet
North American Datum of 1983
Basemap: 2015 USGS Topographic Map
Data Source: VDOT CEDAR; ERI5, 2016.

- Legend**
- Potential HAZMAT or Petroleum Contamination
 - SUPERFUND/ CERCLA/ NPL
 - Known HAZMAT Release
 - Hazmat Facility
 - Potential Petroleum Contamination
 - Petroleum Facility
 - Amtrak Station
 - VRE Station
 - Amtrak/VRE Station
 - VRE/WMATA Station
 - CSXT Mileposts
 - DC2RVA Project Corridor
 - Alternative Area Limits
 - Virginia Rail Lines
 - 1,000-foot Study Area
 - County/City Boundaries

Figure O-1
Hazardous Materials Sites

Sheet 2 of 15

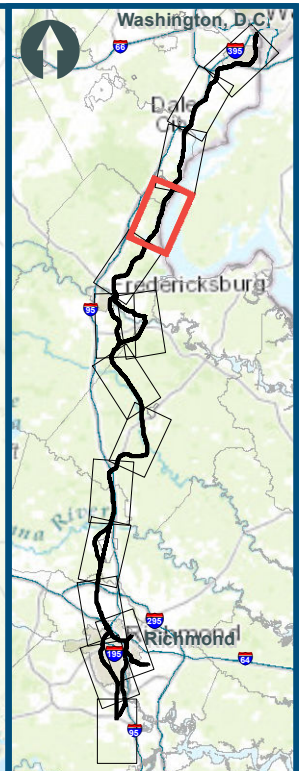
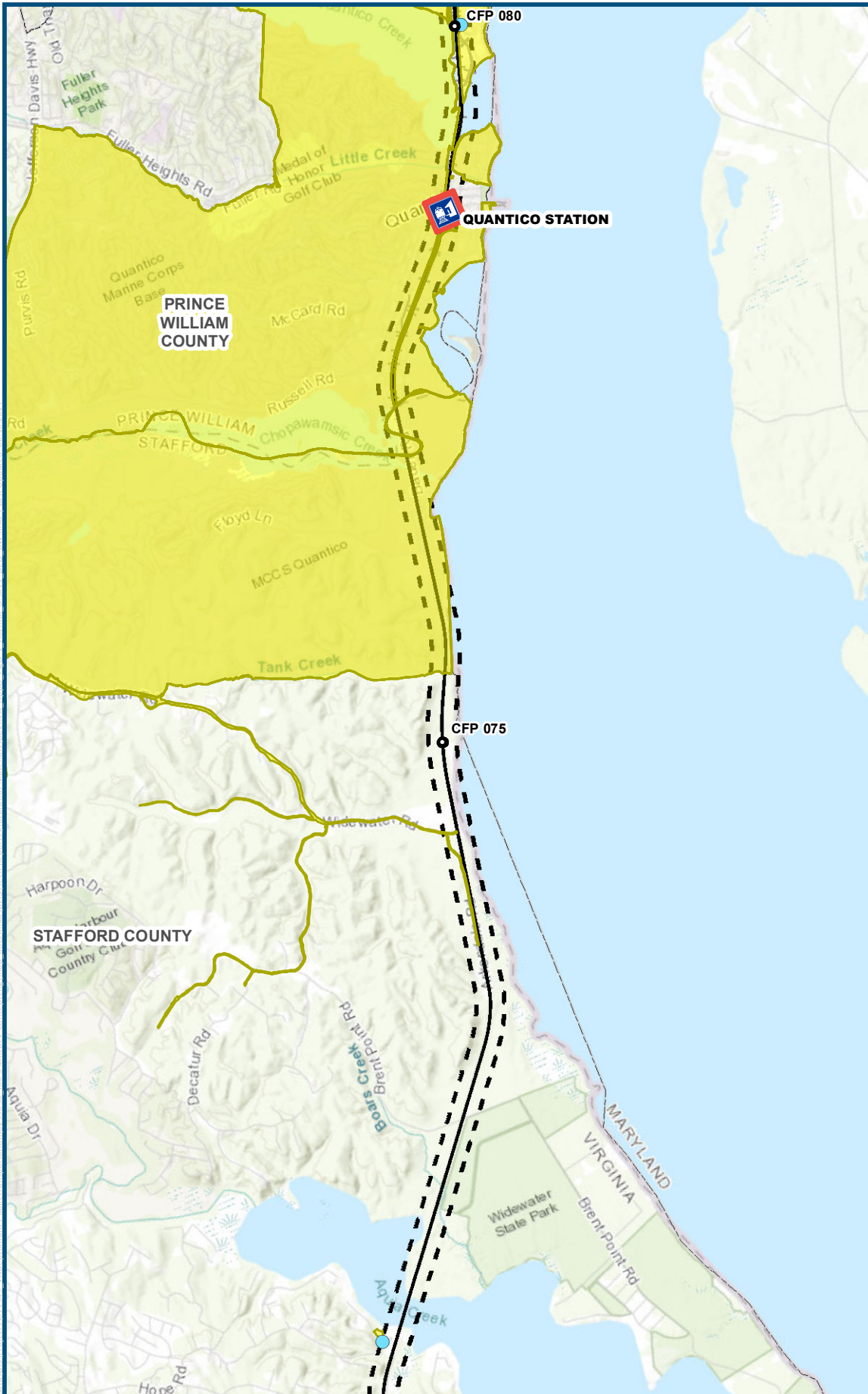


0 0.5 1
 Mile
 1 inch = 1 mile
 @ 8.5 x 11 inches
 Projection: Lambert Conformal Conic
 State Plane Virginia North FIPS 4501 Feet
 North American Datum of 1983
 Basemap: 2015 USGS Topographic Map
 Data Source: VDOT CEDAR; ERSI, 2016.

- Legend**
- Potential HAZMAT or Petroleum Contamination
 - SUPERFUND/ CERCLA/ NPL
 - Known HAZMAT Release
 - Hazmat Facility
 - Potential Petroleum Contamination
 - Petroleum Facility
 - Amtrak Station
 - VRE Station
 - Amtrak/VRE Station
 - VRE/WMATA Station
 - CSXT Mileposts
 - DC2RVA Project Corridor
 - Alternative Area Limits
 - Virginia Rail Lines
 - 1,000-foot Study Area
 - County/City Boundaries

**Figure O-1
 Hazardous Materials
 Sites**

Sheet 3 of 15

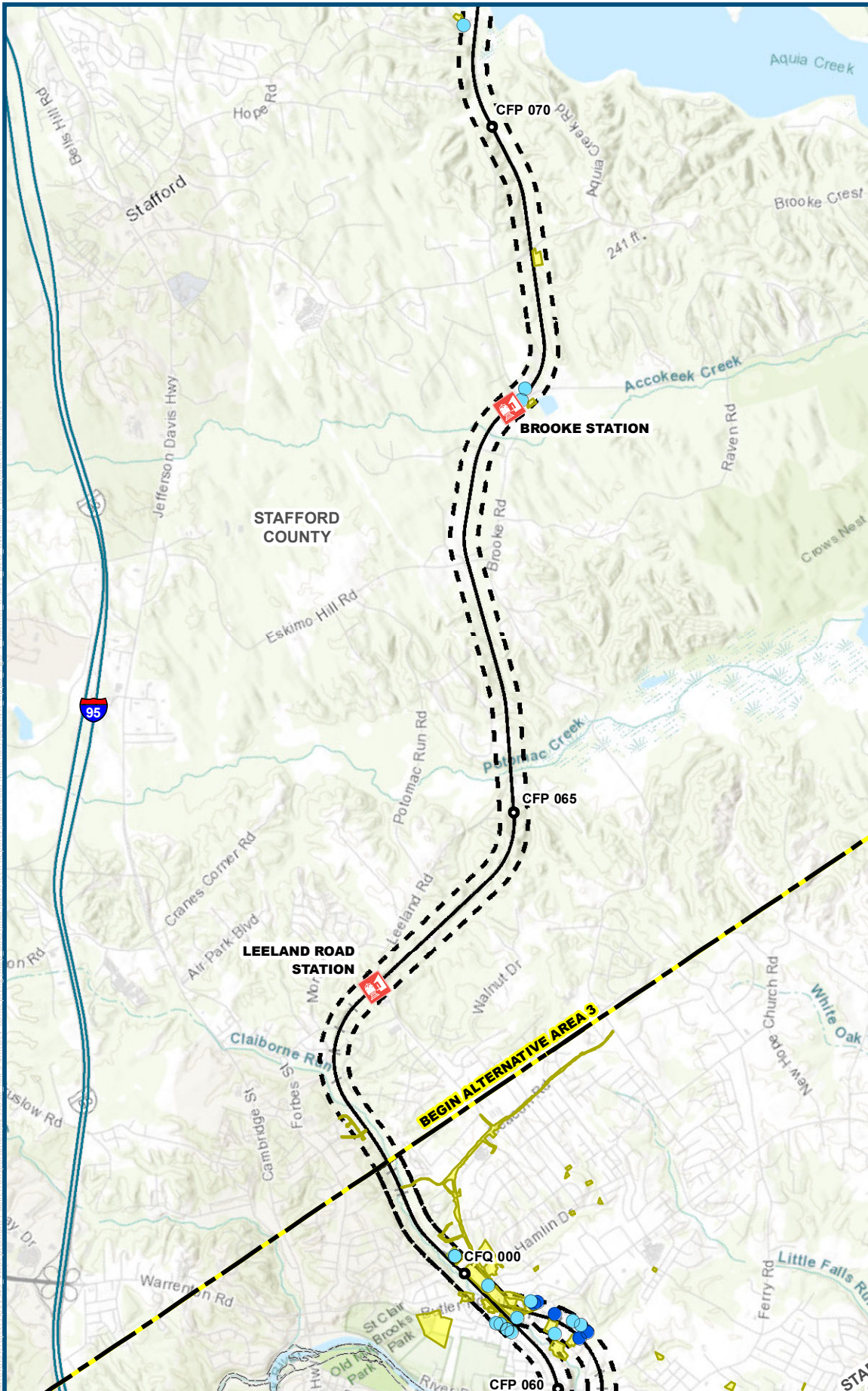


0 0.5 1
Mile
1 inch = 1 mile
@ 8.5 x 11 inches
Projection: Lambert Conformal Conic
State Plane Virginia North FIPS 4501 Feet
North American Datum of 1983
Basemap: 2015 USGS Topographic Map
Data Source: VDOT CEDAR; ERIS, 2016.

- Legend**
- Potential HAZMAT or Petroleum Contamination
 - SUPERFUND/ CERCLA/ NPL
 - Known HAZMAT Release
 - Hazmat Facility
 - Potential Petroleum Contamination
 - Petroleum Facility
 - Amtrak Station
 - VRE Station
 - Amtrak/VRE Station
 - VRE/WMATA Station
 - CSXT Mileposts
 - DC2RVA Project Corridor
 - Alternative Area Limits
 - Virginia Rail Lines
 - 1,000-foot Study Area
 - County/City Boundaries

Figure O-1
Hazardous Materials Sites

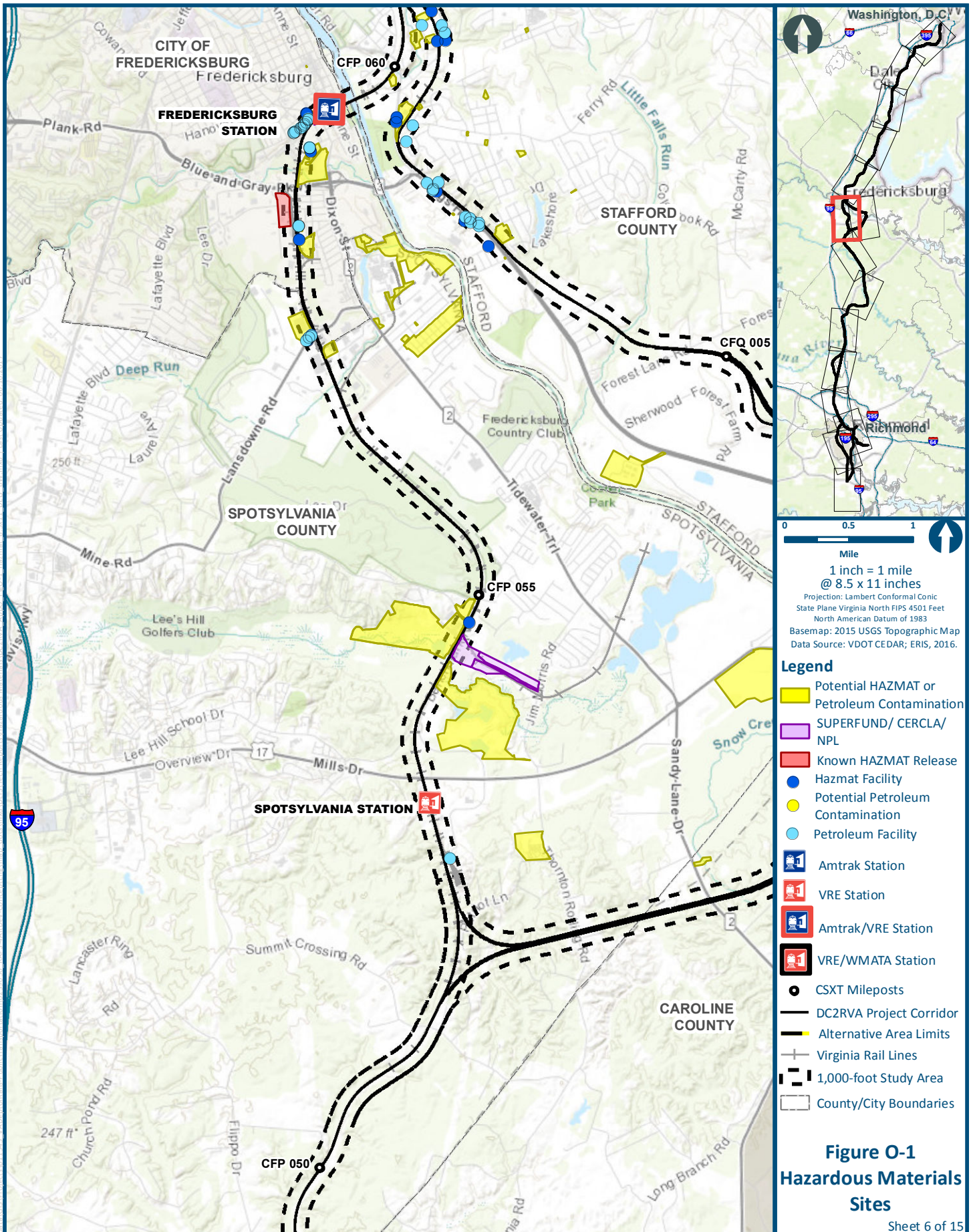
Sheet 4 of 15



0 0.5 1
Mile
1 inch = 1 mile
@ 8.5 x 11 inches
Projection: Lambert Conformal Conic
State Plane Virginia North FIPS 4501 Feet
North American Datum of 1983
Basemap: 2015 USGS Topographic Map
Data Source: VDOT CEDAR; ERIS, 2016.

- Legend**
- Potential HAZMAT or Petroleum Contamination
 - SUPERFUND/ CERCLA/ NPL
 - Known HAZMAT Release
 - Hazmat Facility
 - Potential Petroleum Contamination
 - Petroleum Facility
 - Amtrak Station
 - VRE Station
 - Amtrak/VRE Station
 - VRE/WMATA Station
 - CSXT Mileposts
 - DC2RVA Project Corridor
 - Alternative Area Limits
 - Virginia Rail Lines
 - 1,000-foot Study Area
 - County/City Boundaries

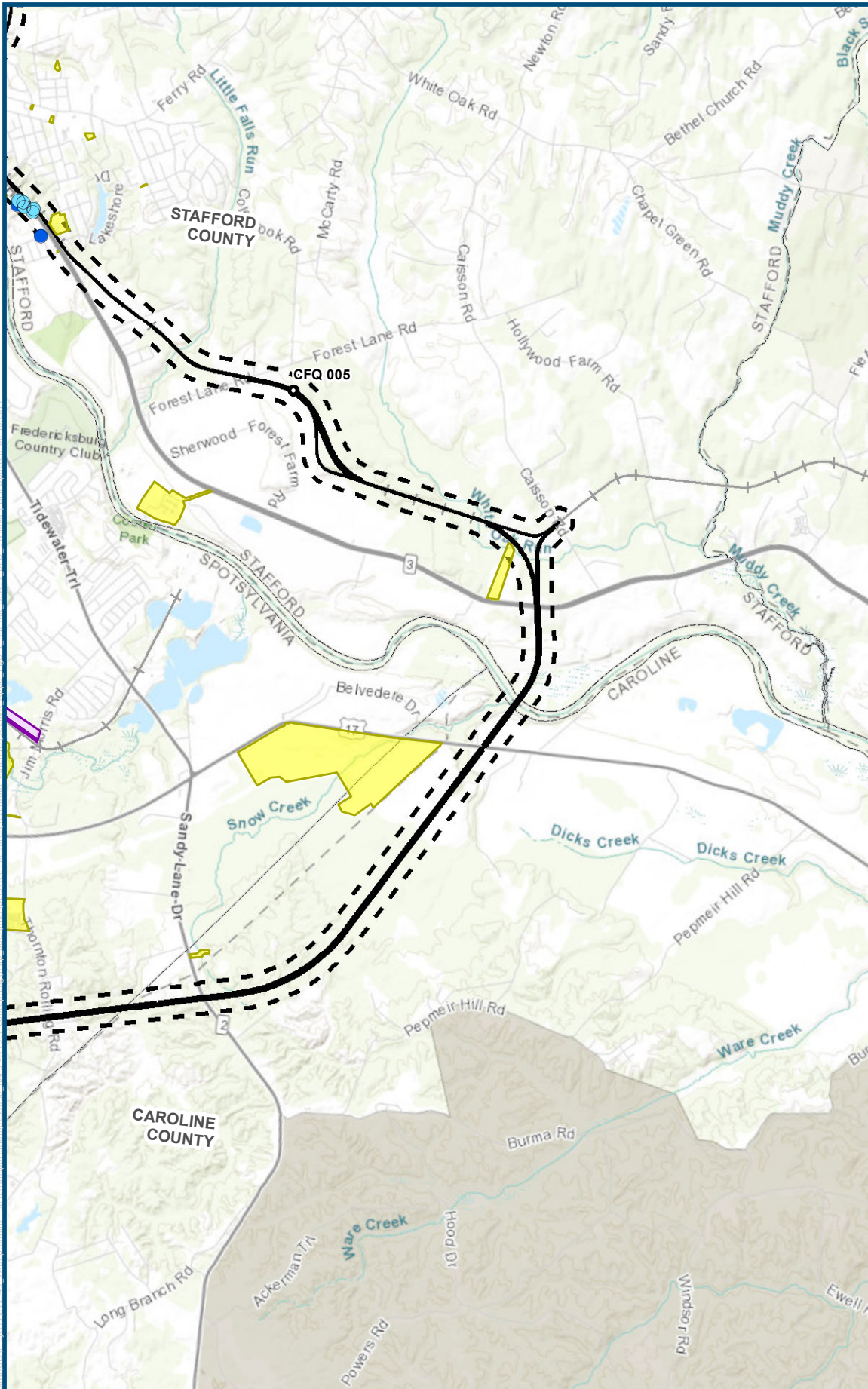
Figure O-1
Hazardous Materials Sites



- Legend**
- Potential HAZMAT or Petroleum Contamination
 - SUPERFUND/ CERCLA/ NPL
 - Known HAZMAT Release
 - Hazmat Facility
 - Potential Petroleum Contamination
 - Petroleum Facility
 - Amtrak Station
 - VRE Station
 - Amtrak/VRE Station
 - VRE/WMATA Station
 - CSXT Mileposts
 - DC2RVA Project Corridor
 - Alternative Area Limits
 - Virginia Rail Lines
 - 1,000-foot Study Area
 - County/City Boundaries

Figure O-1
Hazardous Materials Sites

Sheet 6 of 15

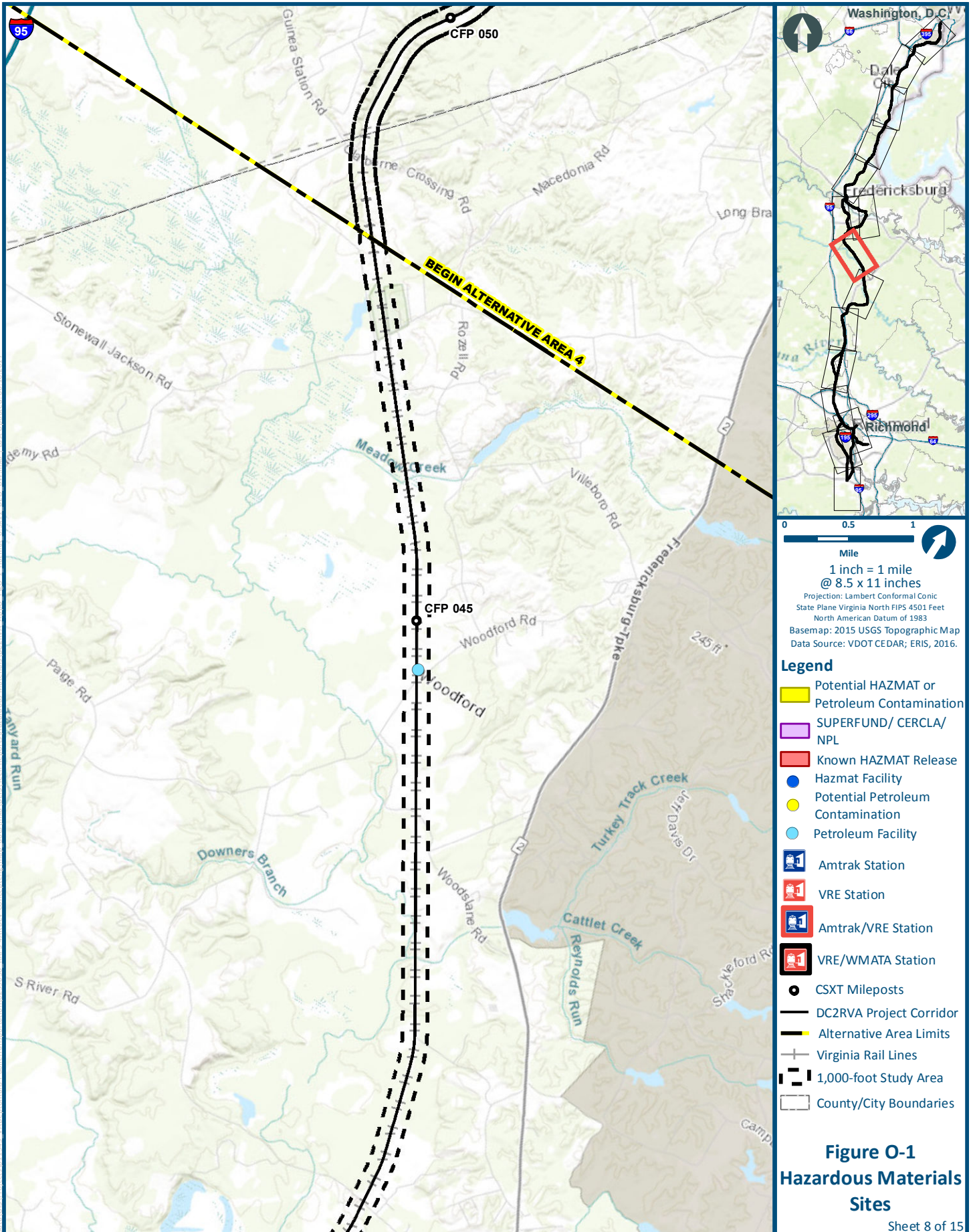


0 0.5 1
Mile
1 inch = 1 mile
@ 8.5 x 11 inches
Projection: Lambert Conformal Conic
State Plane Virginia North FIPS 4501 Feet
North American Datum of 1983
Basemap: 2015 USGS Topographic Map
Data Source: VDOT CEDAR; ERSI, 2016.

- Legend**
- Potential HAZMAT or Petroleum Contamination
 - SUPERFUND/ CERCLA/ NPL
 - Known HAZMAT Release
 - Hazmat Facility
 - Potential Petroleum Contamination
 - Petroleum Facility
 - Amtrak Station
 - VRE Station
 - Amtrak/VRE Station
 - VRE/WMATA Station
 - CSXT Mileposts
 - DC2RVA Project Corridor
 - Alternative Area Limits
 - Virginia Rail Lines
 - 1,000-foot Study Area
 - County/City Boundaries

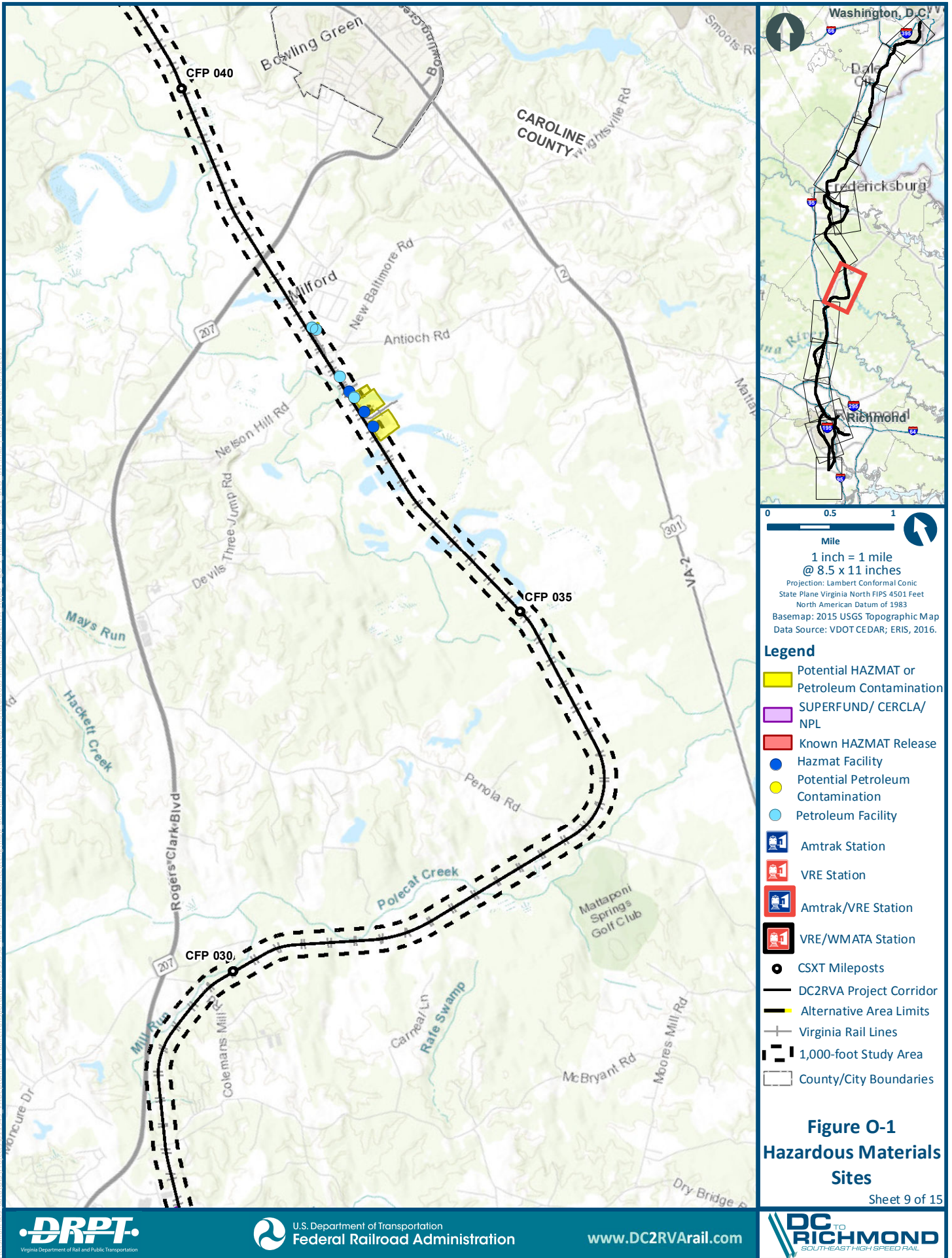
Figure O-1
Hazardous Materials Sites

Sheet 7 of 15



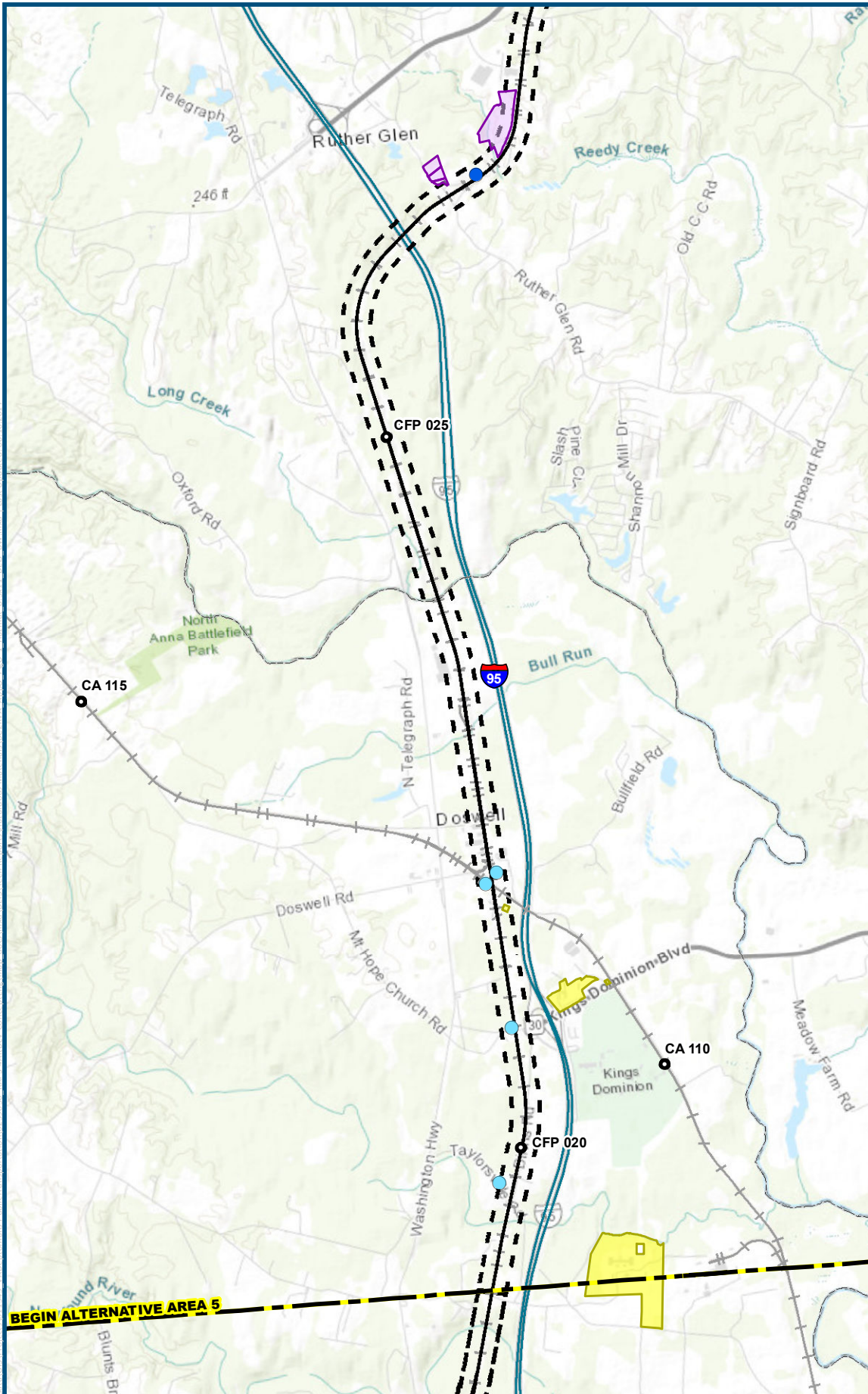
0 0.5 1
Mile
1 inch = 1 mile
@ 8.5 x 11 inches
Projection: Lambert Conformal Conic
State Plane Virginia North FIPS 4501 Feet
North American Datum of 1983
Basemap: 2015 USGS Topographic Map
Data Source: VDOT CEDAR; ERSI, 2016.

- Legend**
- Potential HAZMAT or Petroleum Contamination
 - SUPERFUND/ CERCLA/ NPL
 - Known HAZMAT Release
 - Hazmat Facility
 - Potential Petroleum Contamination
 - Petroleum Facility
 - Amtrak Station
 - VRE Station
 - Amtrak/VRE Station
 - VRE/WMATA Station
 - CSXT Mileposts
 - DC2RVA Project Corridor
 - Alternative Area Limits
 - Virginia Rail Lines
 - 1,000-foot Study Area
 - County/City Boundaries



- Legend**
- Potential HAZMAT or Petroleum Contamination
 - SUPERFUND/ CERCLA/ NPL
 - Known HAZMAT Release
 - Hazmat Facility
 - Potential Petroleum Contamination
 - Petroleum Facility
 - Amtrak Station
 - VRE Station
 - Amtrak/VRE Station
 - VRE/WMATA Station
 - CSXT Mileposts
 - DC2RVA Project Corridor
 - Alternative Area Limits
 - Virginia Rail Lines
 - 1,000-foot Study Area
 - County/City Boundaries

Figure O-1
Hazardous Materials Sites



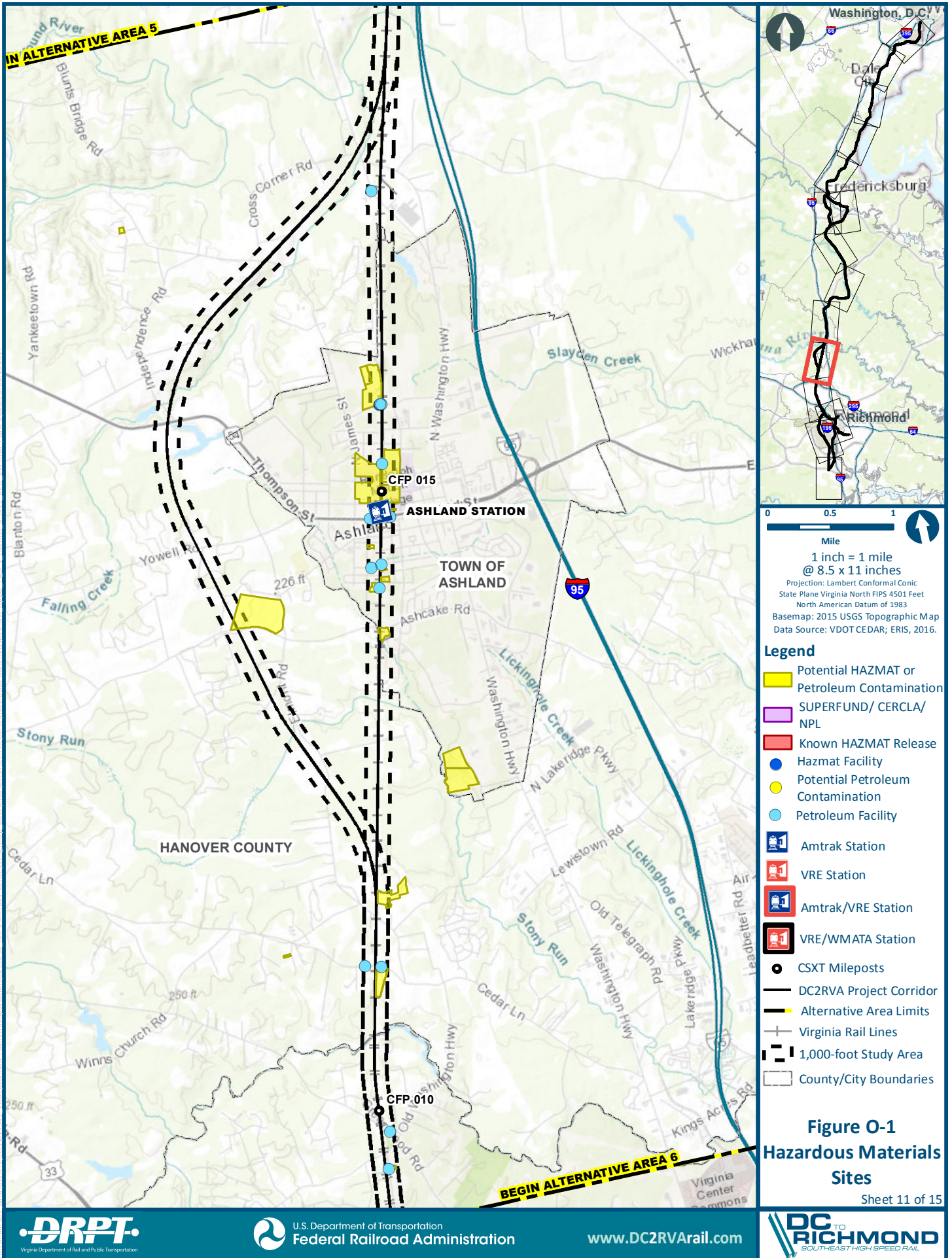
0 0.5 1

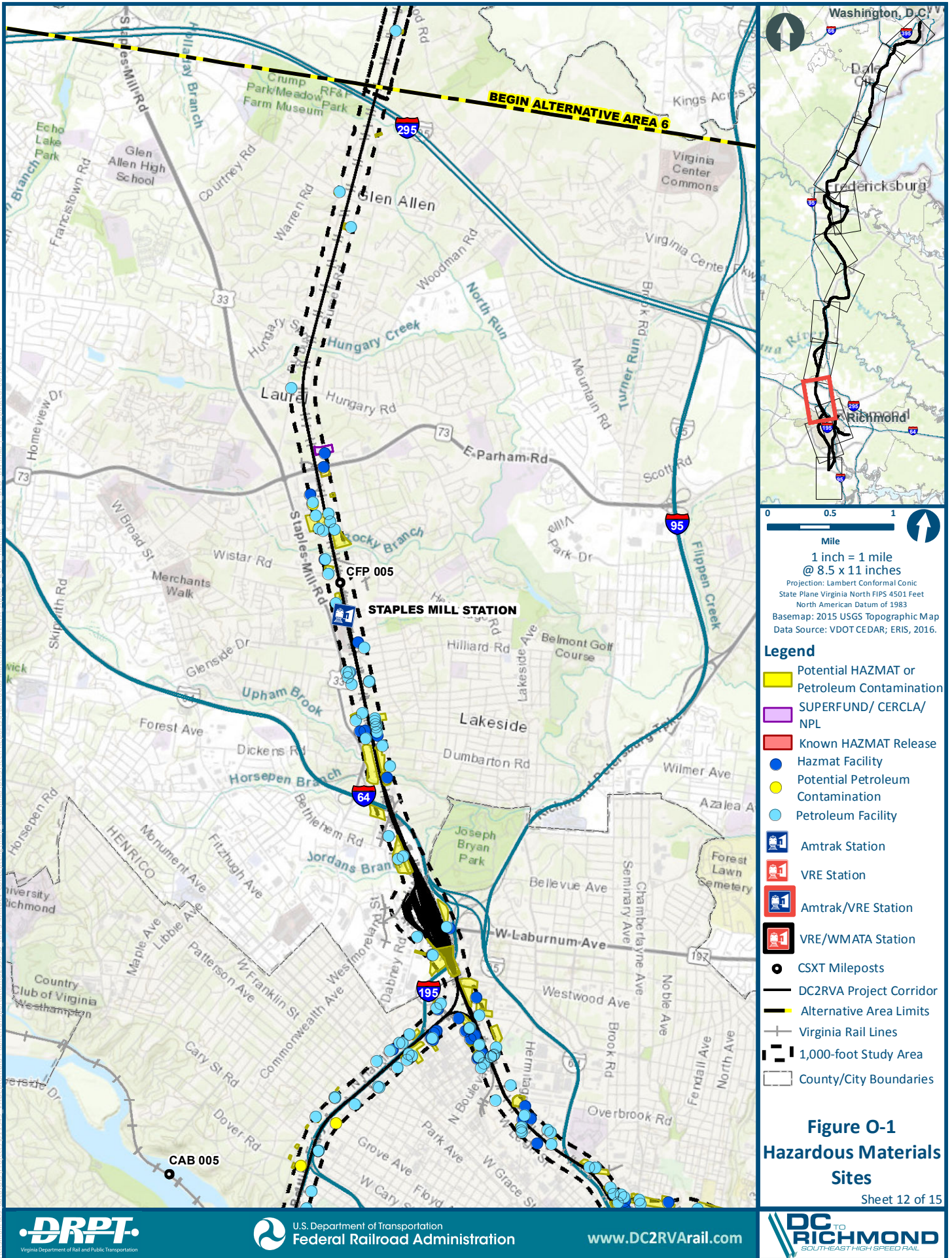
Mile
1 inch = 1 mile
@ 8.5 x 11 inches

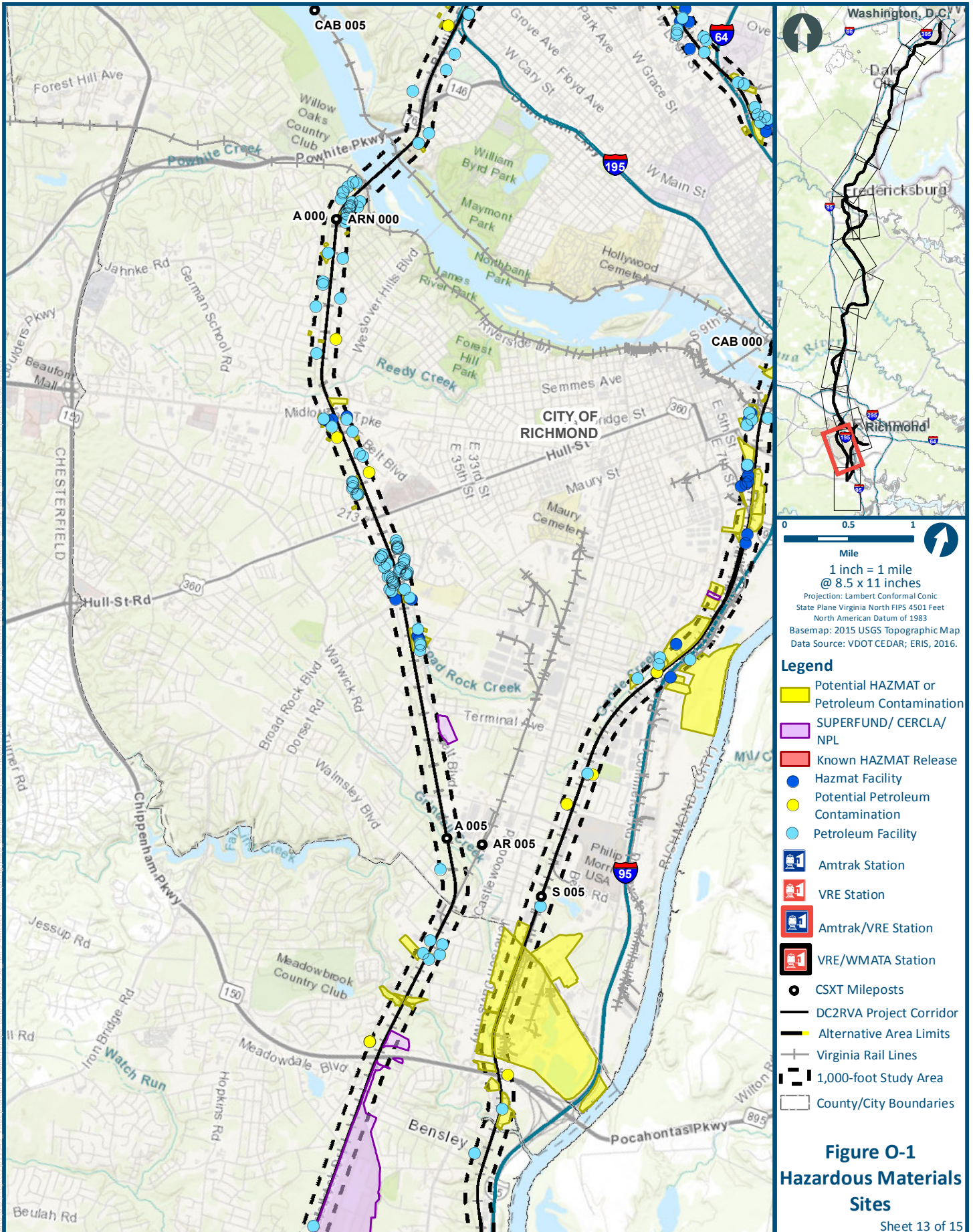
Projection: Lambert Conformal Conic
State Plane Virginia North FIPS 4501 Feet
North American Datum of 1983
Basemap: 2015 USGS Topographic Map
Data Source: VDOT CEDAR; ERSI, 2016.

- Legend**
- Potential HAZMAT or Petroleum Contamination
 - SUPERFUND/ CERCLA/ NPL
 - Known HAZMAT Release
 - Hazmat Facility
 - Potential Petroleum Contamination
 - Petroleum Facility
 - Amtrak Station
 - VRE Station
 - Amtrak/VRE Station
 - VRE/WMATA Station
 - CSXT Mileposts
 - DC2RVA Project Corridor
 - Alternative Area Limits
 - Virginia Rail Lines
 - 1,000-foot Study Area
 - County/City Boundaries

Figure O-1
Hazardous Materials Sites
Sheet 10 of 15







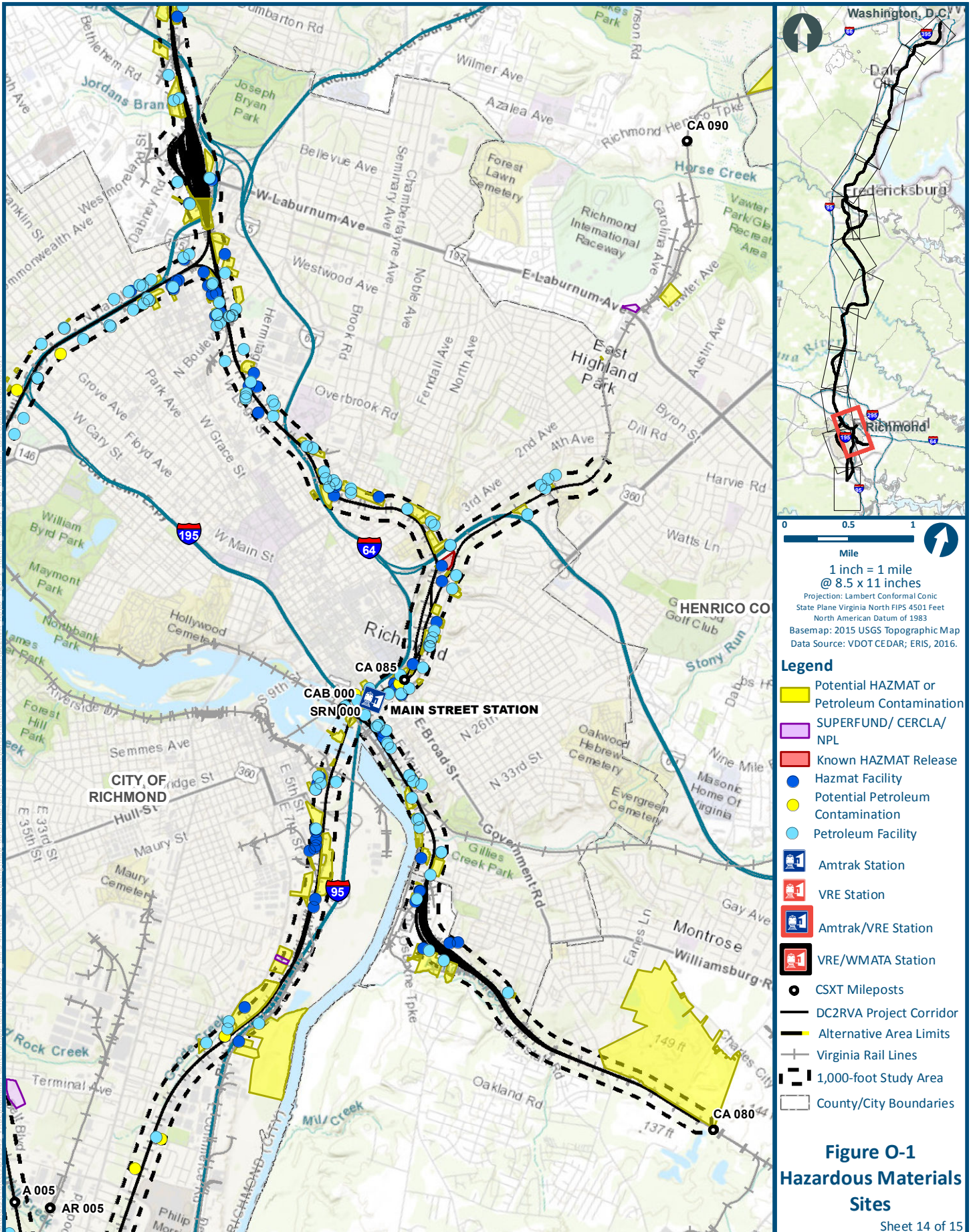
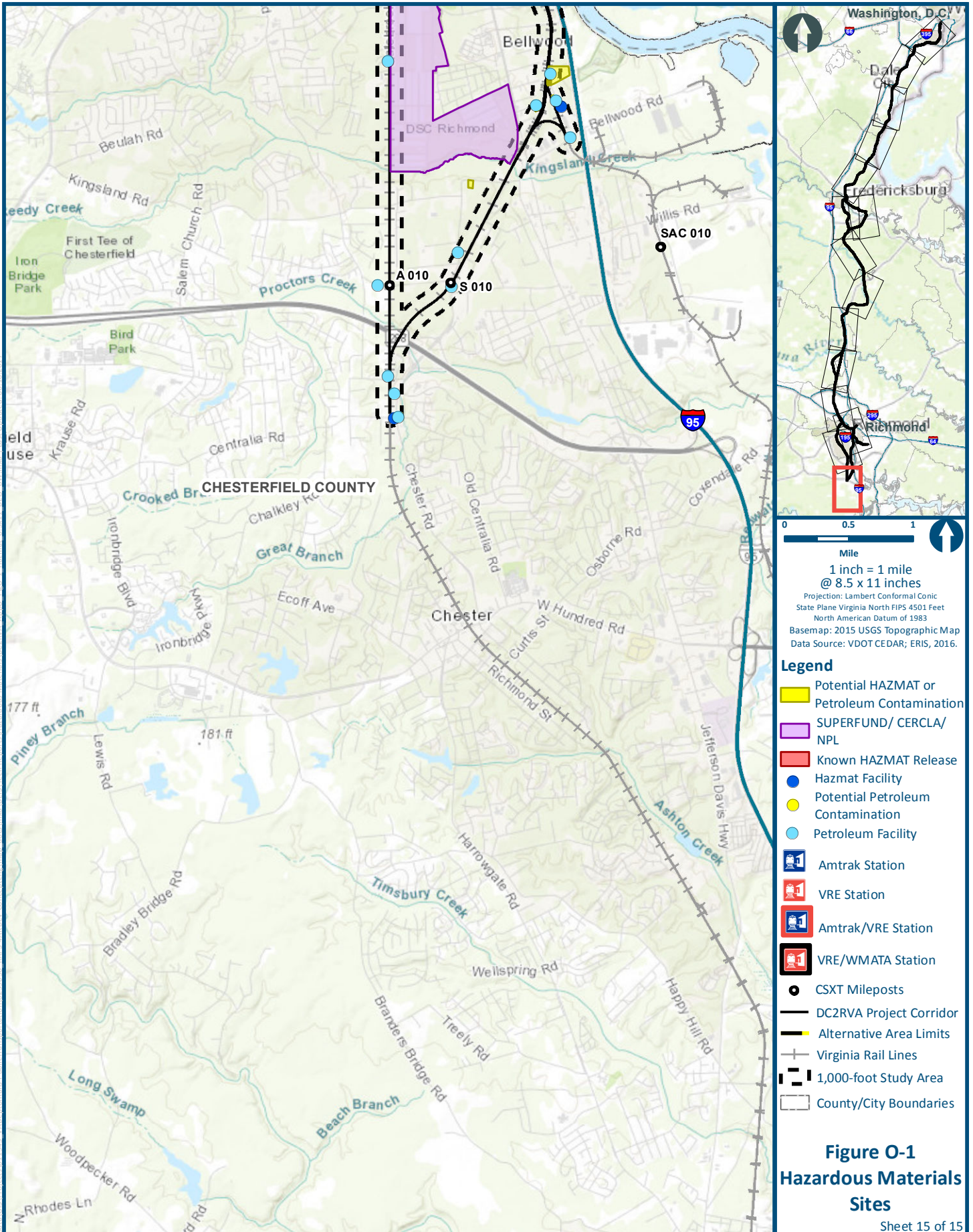


Figure O-1
Hazardous Materials
Sites

Sheet 14 of 15



- Legend**
- Potential HAZMAT or Petroleum Contamination
 - SUPERFUND/ CERCLA/ NPL
 - Known HAZMAT Release
 - Hazmat Facility
 - Potential Petroleum Contamination
 - Petroleum Facility
 - Amtrak Station
 - VRE Station
 - Amtrak/VRE Station
 - VRE/WMATA Station
 - CSXT Mileposts
 - DC2RVA Project Corridor
 - Alternative Area Limits
 - Virginia Rail Lines
 - 1,000-foot Study Area
 - County/City Boundaries

Figure O-1
Hazardous Materials Sites
 Sheet 15 of 15

TABLE O-1: PETROLEUM FACILITIES POTENTIALLY IMPACTED

Area	Company	Alt	Address	Database
2. Northern Virginia	Verizon Business WDBRVA	A	13604 Dawson Beach Rd, Woodbridge, VA	UST, VDEQ_PERTO_REGISTER_FACIL
3. Fredericksburg	BASSETT BEDDING - FREDERICKSBURG	B	309 Lansdowne Rd, Fredericksburg, VA	UST, VDEQ_PERTO_REGISTER_FACIL
	HUTTIG SASH & DOOR CO	B	400 Lansdowne Rd, Fredericksburg, VA	UST, VDEQ_PERTO_REGISTER_FACIL
	Lee Hill Limited Partnership Property	B	502 Lansdowne Rd, Fredericksburg, VA	LST
	Todd Gas Station	C	123 White Oak Rd, Fredericksburg, VA	VDEQ_PTROLM_RLS_SITES, VDEQ_PERTO_REGISTER_FACIL
5. Ashland	Ashland Town Shop	B, D	100 Vaughn Rd, Ashland, VA	UST, VDEQ_PERTO_REGISTER_FACIL
	Berry John Residence	D, D	1000 Center St, Ashland, VA	LST, VDEQ_PTROLM_RLS_SITES
	Dew and Beane Incorporated	B, D	102 England St, Ashland, VA	UST, VDEQ_PERTO_REGISTER_FACIL
	Hopkins Patrick Property	C	12038 Ashcake Rd, Ashland, VA	LST
	Iron Horse Restaurant	A, B, D	100 S Railroad Ave, Ashland, VA	LST, VDEQ_PTROLM_RLS_SITES
	Laniewicz Stephen J Residence	C	14310 Washington Hwy, Ashland, VA	LST
	Pecora Theresa Residence	D	805 S Center St, Ashland, VA	LST, VDEQ_PTROLM_RLS_SITES
6. Richmond	B&J CABINET SHOP	A, B-A, C, E	Richmond, VA	VDEQ_PERTO_REGISTER_FACIL
	Bills Quality Auto Care	A, B-A, B- S, C, D, E, F, G	9411 Old Staples Mill Rd, Richmond, VA	LST, UST, VDEQ_PTROLM_RLS_SITES
	Bowden Property	A, B-A, C, E	2 E Belt Blvd, Richmond, VA	LST, VDEQ_PTROLM_RLS_SITES
	COMMERCIAL SHOPPING CENTER	A, B-A, C, E	1732-1808 BROAD ROCK BLVD., Richmond, VA	SPL, LST
	DGS Fleet Management Services	B-A	Richmond, VA	VDEQ_PERTO_REGISTER_FACIL

TABLE O-1: PETROLEUM FACILITIES POTENTIALLY IMPACTED

Area	Company	Alt	Address	Database
6. Richmond (continued)	ELECTRICAL EQUIPMENT COMPANY	B-A, C	1807 W Boulevard, Richmond, VA	UST, VDEQ_PERTO_REGISTER_FACIL
	E M Todd Company Inc	B-S, C	1128 Hermitage Rd, Richmond, VA	UST, VDEQ_PERTO_REGISTER_FACIL
	Froehling and Robertson Incorporated - Dumbarton	B-A, B-S, C, D, F, G	3015 Dumbarton Rd, Richmond, VA	LST, UST, VDEQ_PTROLM_RLS_SITES
	Greyhound Garage	B-A, C	2710 N Boulevard St, Richmond, VA	LST
	GRINNELL FIRE PROTECTION SYSTEM	B-S, D, F, G	2110 Ruffin Rd, Richmond, VA	UST
	IMPERIAL COATINGS	B-A, C	Richmond, VA	VDEQ_PERTO_REGISTER_FACIL
	Loveland Distributing Company Inc	B-A, C	1855 W Boulevard, Richmond, VA	UST, VDEQ_PERTO_REGISTER_FACIL
	LOVING'S PRODUCE AMMONIA ER	D	1601 E GRACE STREET, Richmond, VA	CERC, CNFR, SPL, LST, UST, VDEQ_PTROLM_RLS_SITES, VDEQ_PERTO_REGISTER_FACIL
	MacTavish Machine Manufacturing Company	A, B-A, B- S, C, D, E, F, G	9001 Hermitage Rd, Richmond, VA	UST
	McGuire Motors Incorporated	A, B-A, C, E	1740 E Belt Blvd, Richmond, VA	LST, UST, VDEQ_PTROLM_RLS_SITES, VDEQ_PERTO_REGISTER_FACIL
	N W Martin and Brothers Inc	B-S, D, F, G	1531 Saint James St, Richmond, VA	LST, UST, VDEQ_PERTO_REGISTER_FACIL, VDEQ_PTROLM_RLS_SITES
	PM Specialty Foods	B-S, C	1603 Ownby Ln, Richmond, VA	UST
	Richmond City - Vehicle Mainenance Facility	B-A, C	Richmond, VA	VDEQ_PERTO_REGISTER_FACIL
	Richmond Foundry Manufacturing Company	B-S, C	1100 Hermitage Rd, Richmond, VA	LST, UST, VDEQ_PTROLM_RLS_SITES
Verizon Business-CTRLVA	A, B-A, C, E	Chesterfield, VA	VDEQ_PERTO_REGISTER_FACIL	

Note: For Area 5, Ashcake and non-Ashcake alternatives affect the same sites.

TABLE O-2: HAZMAT FACILITIES POTENTIALLY IMPACTED

Area	Company	Alt	Address	Database
2. Northern Virginia	DOMINION X-RAY & MEDICAL SUPPLY INC	A	13536 JEFFERSON DAVIS HWY, Woodbridge, VA	RGEN, SQG
	DERWENT NORTH AMERICA	A	1725 DUKE ST STE 250, Alexandria, VA	SQG
3. Fredericksburg	CVS OF DC AND VA, INC.	B	500 LANSDOWNE ROAD, Fredericksburg, VA	RGEN, UST
	Elim Cleaners, LEES CLEANERS	B	314 Butler Rd Ste 104, Fredericksburg, VA	DRYC, ICIS, RGEN, FRS
	HOOVEN DAYTON CO	B	400B LANSDOWNE RD, Fredericksburg, VA	RNGN
	J AND B AUTOBODY AND CUSTOM REFINISHING	C	101 PINE RD, Fredericksburg, VA	FRS
	MOORE BUSINESS FORMS	B	300 LANSDOWNE RD, Fredericksburg, VA	RGEN, UST, VDEQ_PERTO_REGISTER_FACIL
5. Ashland	Randolph Macon College Physical Plant and Maintenance	B, D	115 N Railroad Ave, Ashland, VA	FRS, LST, AST, UST, VDEQ_PTROLM_RLS_SITES
6. Richmond	AMOCO #1923-TANKS	A, B-A, C, E	#1 WEST BELT BLVD, Richmond, VA	SQG
	BUHRMAN & SONS INC	B-S, C	2405 HERMITAGE RD, Richmond, VA	RNGN
	COLONIAL PIPELINE-RICHMOND DELIVERY FAC.	B-S, D, E, G	1400 GOODES STREET, Richmond, VA	FRS, SPL, LST
	David J Joseph Co, STRATTON METALS LLC	B-S, D, F, G	900 Brook Rd, Richmond, VA	SPL, FRS, UST
	Halifax Paper Board Company	A, B-A, B-S, C, D, E, F, G	711 Hospital St, Richmond, VA	FRS, RNGN, LST, UST, VDEQ_PTROLM_RLS_SITES, VDEQ_PERTO_REGISTER_FACIL
	MONTEITH USAR CTR	A, B-A, C, E	1741 E BELT BLVD, Richmond, VA	RGEN, UST, VDEQ_PERTO_REGISTER_FACIL
	RECO Industries, Inc., Aqua Clean Environmental of Virginia	B-S, D, E, F, G	710 Hospital Street, Richmond, VA	VEDP_ACT_LANDFILL, RNGN, AST, VEDP_SOLID_WASTE_MNG_FCLTY, SPL

TABLE O-2: HAZMAT FACILITIES POTENTIALLY IMPACTED

Area	Company	Alt	Address	Database
6. Richmond (continued)	RICHMOND HEAT TREATING CO.	B-S, C, D, F, G	1136 HERMITAGE RD., Richmond, VA	FRS, RGEN
	SBB REALTY T/A BROAD ROCK CLEANERS	A, B-A, C, E	1804 BROAD ROCK RD, Richmond, VA	RGEN, SQG
	TOTAL CLEANING POWER, R S DAY & SONS	B-S, D, F, G	2107 COMMERCE RD, Richmond, VA	FRS, RGEN
	VDOT Shockoe Valley Headquater	E	1603 Valley Rd, Richmond, VA	RGEN, LST, VDEQ_PTROLM_RLS_SITES

Note: For Area 5, Ashcake and non-Ashcake alternatives affect the same sites.

TABLE O-3: PARCELS WITH POTENTIAL PETROLEUM CONTAMINATION WITHIN THE ROW

Area	Owner	Alt	Parcel Number	Parcel Address	Company Name	Company Address	Database
1. Arlington	ARLINGTON COUNTY BOARD	B, C	34024350	475 JEFFERSON DAVIS HWY	Cardinal Concrete	450 Old Jefferson Davis Hwy	VDEQ_PTROLM_RLS_SITES
				475 JEFFERSON DAVIS HWY	RF and P Facility/Yard	400 Blk Old Jefferson Davis Hwy	VDEQ_PTROLM_RLS_SITES
2. Northern Virginia	BACHMANN MICHAEL C &	A	34020PCA	<Null>	Crystal Park Condominiums	1805 Crystal Dr, Arlington, VA	LST, VDEQ_PTROLM_RLS_SITES
	UNITED STATES OF AMERICA	A	34027023	JEFFERSON DAVIS HWY	NPS - Maintenance Yard	2700 George Washington Memorial Pkwy, Arlington, VA	VDEQ_PTROLM_RLS_SITES
	WASHINGTON METROPOLITAN AREA TRANSIT AUTHORITY	A	069.02-02-01	4450 EISENHOWER AV	Wilbar and Arnold Incorporated, VDOT - Alexandria City, FLIPPO CONSTRUCTION INC	5500 Clermont Dr, Alexandria, VA	LST, VDEQ_PTROLM_RLS_SITES, UST, VDEQ_PERTO_REGISTER_FACIL
	CRO HOLDING LLC	A	8392-94-7936	13611 JEFFERSON DAVIS HY	Woodbridge Auto Sales, RF and P Facility - Woodbridge Auto	13609 Jefferson Davis Hwy, Woodbridge, VA	LST, VDEQ_PTROLM_RLS_SITES
3. Fredericksburg	CITY OF FREDERICKSBURG	A, B	7789-10-5871	201 FERDINAND ST	Atlantic Oil (former) (YELLOW)	Gunnery and Dunmore Rds, Fredericksburg, VA	UST, LST, VDEQ_PERTO_REGISTER_FACIL, VDEQ_PTROLM_RLS_SITES
	COMMONWEALTH OF VIRGINIA VIRGINIA DE	A, B, C	54 43	86 DEACON RD	VDOT Fredericksburg District Complex	87 Deacon Rd, Falmouth, VA	VDEQ_PTROLM_RLS_SITES, VDEQ_PERTO_REGISTER_FACIL
	STEUART-FERRY FARM SHOPPING CENTER L	C	54 94A	205 KINGS HWY	Ferry Farms Shopping Center	Ferry Farms Rd and Kings Hwy, Fredericksburg, VA	PetroleumRLS-CEDAR
	WEC 2001 A-DC-5 LLC	B	7878-14-3645	501 Lansdowne RD	Lee Hill Limited Partnership Property	502 Lansdowne Rd, Fredericksburg, VA	LST
	WILLETTE PROPERTIES LLC	C	54E 2 11	47 COOL SPRING RD	C W Wright Construction Company Incorporated	47 Cool Spring Rd, Falmouth, VA	PetroleumRLS-CEDAR

TABLE O-3: PARCELS WITH POTENTIAL PETROLEUM CONTAMINATION WITHIN THE ROW

Area	Owner	Alt	Parcel Number	Parcel Address	Company Name	Company Address	Database
5. Ashland	Ashland (TOWN OF ASHLAND)	A, B, C, D	7870-86-2718	100 WEST VAUGHAN ROAD	Ashland Maintenance Shop	Ashland, VA	VDEQ_PTROLM_RLS_SITES
	DELILLE, ROBERT P & CARRIE J R/S	D	7779-68-5631	1000 SOUTH CENTER STREET	Berry John Residence	1000 Center St, Ashland, VA	LST, VDEQ_PTROLM_RLS_SITES
	LAWRENCE TRANSPORTATION SYSTEMS,	A, B, C, D	7779-66-5609	105 ASHCAKE ROAD	Southern International	Route 657, Ashland, VA	VDEQ_PTROLM_RLS_SITES
	LEACHMAN, SUSAN W	A, B, D	7779-78-0836	905 SOUTH CENTER STREET	Ashland WWTP	905 South Center Street, Ashland, VA	SPL
	PECORA, THERESA	D	7779-79-0277	805 SOUTH CENTER STREET	Pecora Theresa Residence	805 S Center St, Ashland, VA	LST, VDEQ_PTROLM_RLS_SITES
	RAILROAD MALL PROPERTIES, LLC	D	7870-71-3307	100 SOUTH RAILROAD AVENUE	Iron Horse Restaurant	100 S Railroad Ave, Ashland, VA	LST, VDEQ_PTROLM_RLS_SITES
	RANDOLPH MACON COLLEGE TRUSTEES	A, B, C, D	7870-82-0580	104 COLLEGE AVENUE	Randolph Macon College	505 N Center St, Ashland, VA	LST, VDEQ_PTROLM_RLS_SITES
6. Richmond	ACOSTA ARTURO	D, F, G	7926768259	2507 DWIGHT AV	Spain Ronald Property	2507 Dwight Ave, Richmond, VA	LST, VDEQ_PTROLM_RLS_SITES
	Bowden E L Jr C/o J Hope Property Mgmt	A, B-A, C, E	C0060450028	6 Belt Blvd	Bowden Property	2 E Belt Blvd, Richmond, VA	LST, VDEQ_PTROLM_RLS_SITES
	Carter Robert H	B-S, D, F, G	S0070940033	738 A Goodes St	Chevron Bulk Storage Facility 4036109	700 Goodes St, Richmond, VA	VDEQ_PTROLM_RLS_SITES
	City Of Richmond Public Works	B-A, B-S, C, D, F, G	N0001292004	2400 Hermitage Road	McEwen Lumber Company	2508 Hermitage Rd, Richmond, VA	VDEQ_PTROLM_RLS_SITES

TABLE O-3: PARCELS WITH POTENTIAL PETROLEUM CONTAMINATION WITHIN THE ROW

Area	Owner	Alt	Parcel Number	Parcel Address	Company Name	Company Address	Database
	City Of Richmond Public Utilities	B-S, D, F, G	E0000073003	1601 E Byrd St	U S Army Corp	14th and Byrd St, Richmond, VA	VDEQ_PTROLM_RLS_SITES
	City Of Richmond Public Works	B-A, B-S, C, D, F, G	N0001292004	2400 Hermitage Road	VDOT Ditch Marathon Oil	Marathon Oil Lebanon Chemical, Richmond, VA	VDEQ_PTROLM_RLS_SITES
	C S X Transportation Inc Tax Department J910	A, B-A, B-S, C, D, E, F, G	E0000452071	723 Hospital St	Halifax Paper Board Company	711 Hospital St, Richmond, VA	FRS, RNGN, LST, UST, VDEQ_PTROLM_RLS_SITES, VDEQ_PERTO_REGISTER_FACIL
	Dakota Territory Inc	A, B-A, C, E	C0090374003	1740 Belt Blvd	McGuire Motors Incorporated	1740 E Belt Blvd, Richmond, VA	LST, UST, VDEQ_PTROLM_RLS_SITES, VDEQ_PERTO_REGISTER_FACIL
	Demolition & Asbestos Removal Inc C/o Debbie Atkinson	B-S, D, E, F, G	N0000233005	1405 Valley Road	Rex Lumber Company Former	1405 Valley Rd, Richmond, VA	VDEQ_PTROLM_RLS_SITES
	Edmunds Richard C Jr	B-S, D, F, G	S0080211002	2100 Commerce Road	MG Industries (Relocated &Former), Luck Stone - South Richmond Plant	2100 Commerce Rd, Richmond, VA	LST, UST, VDEQ_PERTO_REGISTER_FACIL, VDEQ_PTROLM_RLS_SITES
	Fenyas Stephen	B-A, B-S, D, F, G	N0001875016	2031 Westwood Ave	Industrial Supply Corporation	1905 Westwood Ave, Richmond, VA	VDEQ_PTROLM_RLS_SITES
	FROEHLING & ROBERTSON INC	B-A, B-S, C, D, F, G	775-744-9936	3015 DUMBARTON RD	Froehling and Robertson Incorporated - Dumbarton	3015 Dumbarton Rd, Richmond, VA	LST, UST, VDEQ_PTROLM_RLS_SITES
	GENERAL ELECTRIC COMPANY	B-A, B-S, C, D, F, G	775-744-4921	5401 STAPLES MILL RD	General Electric Co	5401 Staples Mill Rd, Richmond, VA	VDEQ_PTROLM_RLS_SITES
	G L I Realty Co C/o Tax Dept	B-A, C	N0001601002	2910 N Boulevard	Greyhound Garage/Terminal	2710 N Boulevard, Richmond, VA	LST, VDEQ_PTROLM_RLS_SITES
	Hungerford Coal Co Inc	A, B-A, B-S, C, D, E, F, G	E0000245003	501 N 16th St	Hungerford Oil Company Incorporated	501 N 16th St, Richmond, VA	FRS, AST, UST, LST

TABLE O-3: PARCELS WITH POTENTIAL PETROLEUM CONTAMINATION WITHIN THE ROW

Area	Owner	Alt	Parcel Number	Parcel Address	Company Name	Company Address	Database
	Huss Alex And Athena Rebecca	C	C0050729019	813 Boroughbridge Road	Johnson Garnett Property	813 Boroughbridge Rd, Richmond, VA	VDEQ_PTROLM_RLS_SITES
	Martin N W & Bros Inc	B-S, D, F, G	N0000262005	1531 St James St	N W Martin and Brothers Inc	1531 Saint James St, Richmond, VA	LST, UST, VDEQ_PERTO_REGISTER_FACIL , VDEQ_PTROLM_RLS_SITES
	Mayos Island Lc	B-S, D, F, G	E0000095005	501 R S 14th St	Cxpress	Mayo Is, Richmond, VA	VDEQ_PTROLM_RLS_SITES
	M B S & Associates Inc	A, B-A, C, E	C0060450018	5000 Old Midlothian Tpke	American Paper and Chemical Company	5000 Old Midlothian Tpke, Richmond, VA	LST
	Mincz Kenneth W & Sandra H Trs	B-A, C	N0001598010	1725 Altamont Ave	Highway Machinery and Supply Company Inc	1725 Altamont Ave, Richmond, VA	LST, UST
	New Y Capp Inc The	B-S, D, F, G	N0000313009	1416 Webster St	Town and Country Mechanical	1416 Webster St, Richmond, VA	LST, UST, VDEQ_PTROLM_RLS_SITES
	PURYEAR JOHN G & J C	A, B-A, B-S, C, D, E, F, G	769-759-9415	9411 OLD STAPLES MILL RD	Bills Quality Auto Care	9411 Old Staples Mill Rd, Richmond, VA	LST, UST, VDEQ_PTROLM_RLS_SITES
	Sonoco Products Co Tax B04	B-S, D, F, G	S0080211001	1860 Commerce Road	BC Architects Engineers Property	1850 Commerce Rd, Richmond, VA	VDEQ_PTROLM_RLS_SITES
	Southern Warehouses Inc C/o Harrison & Bates	B-S, D, F, G	N0000472025	1510 Webster St	Southern Warehouses Inc, Tidewater Warehouses Inc	1510 Webster St, Richmond, VA	LST, VDEQ_PTROLM_RLS_SITES, UST, VDEQ_PERTO_REGISTER_FACIL
	Tallent Robert Jr	A, B-A, C, E	C0050869008	707 Boroughbridge Road	Miller Reginald Residence	707 Boroughbridge Rd, Richmond, VA	LST, VDEQ_PTROLM_RLS_SITES
	Todd Lp	B-S, C, D, F, G	N0001295001	1128 Hermitage Road	Richmond Foundry Manufacturing Company	1100 Hermitage Rd, Richmond, VA	LST, UST, VDEQ_PTROLM_RLS_SITES

TABLE O-3: PARCELS WITH POTENTIAL PETROLEUM CONTAMINATION WITHIN THE ROW

Area	Owner	Alt	Parcel Number	Parcel Address	Company Name	Company Address	Database
	WILTON APARTMENTS INC	A, B-A, B-S, C, D, E, F, G	771-753-9383	8421 SANFORD DR	Wilton Properties	8430 Sanford Dr, Richmond, VA	LST, UST, VDEQ_PERTO_REGISTER_FACIL, VDEQ_PTROLM_RLS_SITES
	YOUNG MICHAEL WAYNE	B-A, B-S, C, D, F, G	775-744-2599	3131 SOUTHSIDE AVE	Solomon Louis Property	3131 Southside Ave, Richmond, VA	LST, VDEQ_PTROLM_RLS_SITES
	Virginia Electric & Power Co	B-S, D, E, F	N0000233014	1601 Valley Road	VDOT Shockoe Valley Headquater	1603 Valley Rd, Richmond, VA	RGEN, LST, VDEQ_PTROLM_RLS_SITES
	VDOT c/o L E Brett – Commonwealth of Virginia	B-S, D, F, G	E0000072015	1660 Dock St	VDOT 17th and Dock St	17th and Dock St, Richmond, VA	LST, UST, VDEQ_PTROLM_RLS_SITES, VDEQ_PERTO_REGISTER_FACIL

Note: For Area 5, Ashcake and non-Ashcake alternatives affect the same sites.

TABLE O-4: PARCELS WITH POTENTIAL HAZMAT CONTAMINATION WITHIN THE RIGHT-OF-WAY

Area	Owner	Alt	Parcel Number	Parcel Address	Company Name	Company Address	Database
2. Northern Virginia	ESKANDARI ROSE B	A	8392-94-9792	13601 JEFFERSON DAVIS HY	Auto Gallery, EXXON CO USA #23903	13601 Jefferson Davis Highway, Woodbridge, VA	SPL, RGEN, LST, VDEQ_PTROLM_RLS_SITES, UST, VDEQ_PERTO_REGISTER_FACIL
	PARTNERSHIP ACQUISITION INC	A	8392-93-8115	13750 DABNEY RD	Belmont PS: L-17	13760 Dabney Rd, Woodbridge, VA	SPL
	CESC PARK FOUR LAND LLC	A	34020245	2345 CRYSTAL DR	Crystal Park 6	2451 Crystal Drive, Arlington, VA	SPL
	WOODBIDGE SHOPPING CENTER LLC	A	8392-95-6020	13538 JEFFERSON DAVIS HY	CVS PHARMACY #1404	13600 JEFFERSON DAVIS HIGHWAY, Woodbridge, VA	RGEN, SQG, SPL
	HART ROBERT BROWN	A	8390-73-8261	16245 NEABSCO RD	Harris Residence	16247 Neabsco Road, Woodbridge, VA	SPL
	HART ROBERT BROWN	A	8390-73-8261	16245 NEABSCO RD	Neabsco Creek @ Easy Cruz Marina - Oil Leak	16245 Neabsco Rd, Woodbridge, VA	SPL
	PARTNERSHIP ACQUISITION INC	A	8392-93-9439	13740 DABNEY RD	POTOMAC AIRGAS	13740 DABNEY RD. , Woodbridge, VA	TRIS
	PURVIS STEVE	A	8391-95-7661	14708 FEATHERSTONE RD	Purvis Residence	14708 Featherstone Rd, Woodbridge, VA	HMIR, SPL, LST, VDEQ_PTROLM_RLS_SITE
3. Fredericksburg	ALBERTINE JOHN M & MONA D	C	58A 3 4	100 FEDERAL DR	<Null>	100 FEDERAL DRIVE, Stafford, VA	ERNS
	CLEAN CAR LIMITED PARTNERSHIP	B, C	54 48C	50 WHITE OAK RD	VDOT interchange Construction	Cool Springs Rd & White Oak Rd, Fredericksburg, VA	SPL
	DESHAZO THOMAS	A, B, C	54 76B	63 NAOMI RD	Old Route 3 Pump Station #68	49 Naomi Rd, Fredericksburg, VA	SPL

TABLE O-4: PARCELS WITH POTENTIAL HAZMAT CONTAMINATION WITHIN THE RIGHT-OF-WAY

Area	Owner	Alt	Parcel Number	Parcel Address	Company Name	Company Address	Database
	GOLDEN ARCH LIMITED PARTNERSHIP	C	54 94B	545 FERRY RD	Ferry Road - Force Main, SSO	545 Ferry Rd, Fredericksburg, VA	SPL
	KINGS HIGHWAY BAPTIST CHURCH	C	54E 2 19	15 PINE RD	CSX Dahlgren Spur (former)/Kings Highway Baptist Church	15 Pine Road, Fredericksburg, VA	INST, VRP
	L C SMITH INC	A, B, C	54 26A	29 SYNAN RD	Ryan Homes Incorporated, L.C. SMITH; INC	29 Synan Rd, Fredericksburg, VA	HMIR, LST, UST, VDEQ_PERTO_REGISTER_FACIL, UST, VDEQ_PERTO_REGISTER_FACIL
	MITCHELL THOMAS H	A, B, C	7789-23-2444	200 LAFAYETTE BLVD	<Null>	VRE STATION, Fredericksburg, VA	ERNS
	None given	A, B, C	54 ROW	None given	UNMAPPED - VDOT interchange Construction	Cool Springs Rd & White Oak Rd, Fredericksburg, VA	SPL
	WAWA INC	B	54LL 3	275 BUTLER RD	King Motors/Dihatszu	350 Butler Road, Fredericksburg, VA	SPL
	5. Ashland	RANDOLPH MACON COLLEGE	A, B, C, D	7870-73-2227	312 NORTH CENTER STREET	Ashland WWTP	320 North Center Street, Ashland, VA
STANLEY, HOWARD L		C	7779-18-6611	None given	Anderson Clyde Residence	11414 Ashcake Rd, Ashland, VA	SPL, DLST
6. Richmond	Chewing W C	B-S, D, F, G	E0000072009	1521 E Cary St	American Stripping Co	1521 W Cary St	SPL
	City Of Richmond Dept Of Public Works	D, F, G	E0000107025	1500 E Main St	MAIN STREET I	1500 E. MAIN ST./1520 E. MAIN	FBFL, FRS, BROWNFIELD S PROPERTY

TABLE O-4: PARCELS WITH POTENTIAL HAZMAT CONTAMINATION WITHIN THE RIGHT-OF-WAY

Area	Owner	Alt	Parcel Number	Parcel Address	Company Name	Company Address	Database
						ST./1500 E. FRANKLI.	
	City Of Richmond General Services	B-S, D, E, F, G	E0000127020	1615 E Broad St	Main Street Station II, Spur Station (Former)- East Broad Street	1615 E. Broad Street	BROWNFIELD S PROPERTY, FRS, FBFL, LST, UST, VDEQ_PTROL M_RLS_SITES, VDEQ_PERTO _REGISTER_FA CIL
	City Of Richmond Public Works	B-A, B-S, C, D, F, G	N000129200 4	2400 Hermitage Road	Old Foundry Site- Hermitage Road	2400 Hermitage Road	BFLD, FBFL
	City Of Richmond Public Works	A, B-A, B- S, C, D, E, F, G	E0000452029	703 Hospital St	Reco Biotechnology Reg # 50257	701 Hospital Street	SPL
	COUNTY OF CHESTERFIELD	A, B-A, C, E	7876884369	3000 COGBILL RD	Norton Concrete	3136 Cogbill Rd	SPL
	CSX TRANSPORTATION INC	B-A, B-S, C, D, F, G	780-736- 1836	WESTWOOD AVE	ACCA Yard, BROKEN RAIL CAR (CSX)	2100 Westwood Avenue	SPL, HMIR
	HANKINS & JOHANN INC	A, B-S, C, D, E, F, G	773-750- 1376	7609 COMPTON RD	HANKINS & JOHANN INC	7609 COMPTON RD	TRIS
	Lee James E & Jung H	A, B-A, C, E	C006037003 0	1800 Broad Rock Blvd	COMMERCIAL SHOPPING CENTER	1732-1808 BROAD ROCK BLVD.	SPL, LST

TABLE O-4: PARCELS WITH POTENTIAL HAZMAT CONTAMINATION WITHIN THE RIGHT-OF-WAY

Area	Owner	Alt	Parcel Number	Parcel Address	Company Name	Company Address	Database
	Liphart Steel Co Inc	B-A, B-S, C, D, F, G	N0001875017	3308 Rosedale Ave	LIPHART STEEL CO. INC.	3308 ROSEDALE AVENUE	TRIS, RGEN, UST, SQG, LST, VDEQ_PERTO_REGISTER_FACIL, VDEQ_PTROLL_M_RLS_SITES
	Lyttle Belt Boulevard Llc	A, B-A, C, E	C0090374020	2210 Belt Blvd	RICHMOND WWTP	2200 E. BELT BOULEVARD	SPL
	M & L Llc	B-S, D, F, G	N0000262008	1320 Valley Road	Simon Recovery, LLC	1320 Valley Road	SPL
	Magellan Terminals Holdings L P C/o Becky Spence	B-S, D, F, G	S0000134002	204 E 1st St	Magellan Terminals Holdings LP - Richmond Terminal	204 E First St	RGEN, SPL, LST, AST
	None given	B-S, D, F, G	None given	None given	COMMERCIAL POWER CLEANERS	Richmond, VA	ERNS
	Phoenix Management L L C C/o David J Joseph Co Lessee	B-S, D, F, G	N0000313001	900 Brook Road	David J Joseph Co, STRATTON METALS LLC	900 Brook Rd	SPL, FRS, UST
	Sonoco Products Co Tax B04	B-S, D, F, G	S0080211001	1860 Commerce Road	BELLEMEADE POWER STATION	1860 COMMERCE ROAD	SQG, TRIS
	Vcu Holdings Llc	B-S, D, F, G	N0000317001	1415 Chamberlayne Pkwy	Usry Properties Building, 1402 Roan Street	1415 Chamberlayne Ave	SPL, LST, VDEQ_PTROLL_M_RLS_SITES,

TABLE O-4: PARCELS WITH POTENTIAL HAZMAT CONTAMINATION WITHIN THE RIGHT-OF-WAY

Area	Owner	Alt	Parcel Number	Parcel Address	Company Name	Company Address	Database
							UST, VDEQ_PERTO _REGISTER_FA CIL
	Williams Frank E Jr	B-S, D	S0070292001	700 E 4th St	PRIVATE PROPERTY	700 EAST 4TH STREET	SPL
	Williams Frank E Jr	B-S, D	S0070292006	1500 Goodes St	VULCAN CONSTRUCTION MATERIALS LP - RICHMOND QUARRY, TARMAC - RICHMOND QUARRY	1500 GOODES ST.	ERNS, FRS, AST, VDEQ_PERTO _REGISTER_FA CIL
	WILLIAMSON & WILMER INC	B-A, B-S, C, D, F, G	776-743- 2847	5110 BYRDHILL RD	DUCTS UNLIMITED HVAC	5110 BIRD HILL ROAD	SPL

Note: For Area 5, Ashcake and non-Ashcake alternatives affect the same sites.

TABLE O-5: PARCELS WITH POTENTIAL PETROLEUM CONTAMINATION WITHIN THE RIGHT-OF-WAY

Area	Owner	Alt	Parcel Number	Parcel Address	Company Name	Company Address	Database
6. Richmond	Hospital Street Holdings LLC	B-S, D, E, F, G	N0000233010	710 Hospital St, Richmond, VA	RECO Industries, Inc., Aqua Clean Environmental of Virginia	710 Hospital St, Richmond, VA	VEDP_ACT_LANDFIL L, RNGN, AST, SPL, VEDP_SOLID_WASTE_MNG_FCLTY

TABLE O-6: SUPERFUND/CERCLA/NPL PARCELS WITHIN THE RIGHT-OF-WAY

Area	Owner	Alt	Parcel Number	Parcel Address	Company Name	Company Address	Database
3. Fredericksburg	AFM LLC	A	7789-12-7994	400 CHARLES ST	FREDERICKSBURG TOWN GAS	400 CHARLES ST, Fredericksburg, VA	CERC, CNFR, VRP
4. Central Virginia	R207 LLC	A	83-A-41	None given	R207 LLC DRUM SITE	None given	FRS, CERCLIS, SUPERFUND (NON-NPL)
6. Richmond	Loving Harry & Betty Llc C/o Wright Dunn & Co Llc	D, E, F, G	E0000129029	1601 E Grace St	LOVING'S PRODUCE AMMONIA ER	1601 E GRACE STREET, Richmond, VA	CERC, CNFR, SPL, LST, UST, VDEQ_PTOLM_ RLS_SITES, VDEQ_PERTO_R EGISTER_FACIL