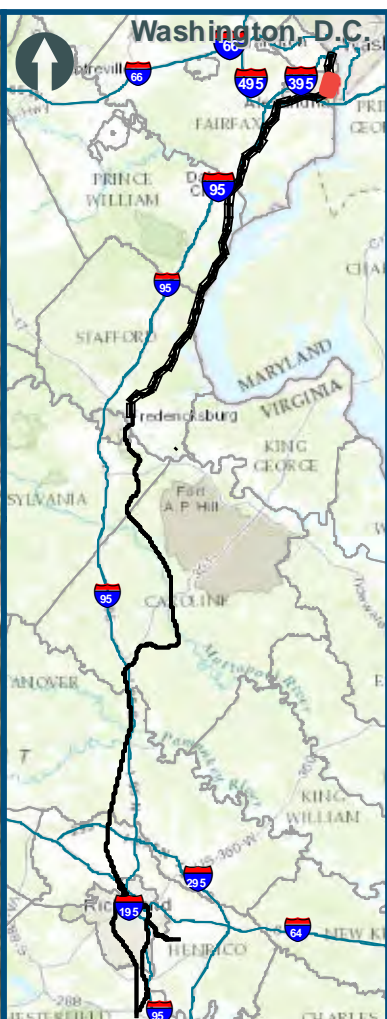


0 250 500
 Feet
 1 inch = 500 feet
 @ 11 x 17 inches
 Projection: Lambert Conformal Conic
 State Plane Virginia North FIPS 4501 Feet
 North American Datum of 1983
 Imagery/Basemap Source: 2015 Bing
 Aerial Imagery; ESRI World Transportation

- Legend**
- - - Category 1 Moderate Noise Impact Contour
 - Category 1 Severe Noise Impact Contour
 - Category 1 Moderate Noise Impacts
 - Category 1 Severe Noise Impacts
 - - - Category 2 Moderate Noise Impact Contour
 - Category 2 Severe Noise Impact Contour
 - Category 2 Moderate Noise Impacts
 - Category 2 Severe Noise Impacts
 - - - Category 3 Moderate Noise Impact Contour
 - Category 3 Severe Noise Impact Contour
 - Category 3 Moderate Noise Impacts
 - Category 3 Severe Noise Impacts
 - CSXT Mileposts
 - Track - Existing
 - Stations
 - Proposed Stations
 - CSXT ROW (County Parcel Data)
 - City/County Boundary

**Appendix B
 Noise Analysis
 Area 2:
 Northern Virginia**

\\dcis-main\gis_data\GIS\Projects\0115-46_VA_Depot\Rail-Public\T-transportation\0239056_RAPS-4\IT-Dev-Concept\Eng\map_docs\mxd\0115-46_VA_Depot\Rail-Public\T-transportation\0239056_Versions\NoiseVib_Area2_Mapbook_11x17_WEB.mxd | Last Updated: 08/15/2017

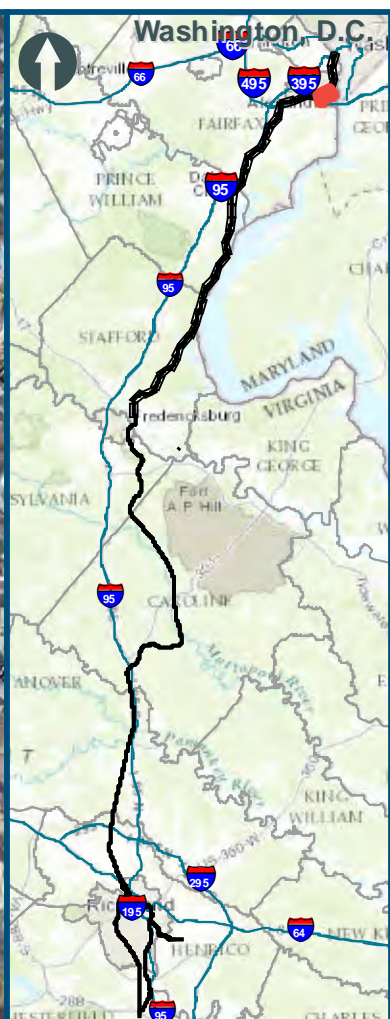


0 250 500
 Feet
 1 inch = 500 feet
 @ 11 x 17 inches
 Projection: Lambert Conformal Conic
 State Plane Virginia North FIPS 4501 Feet
 North American Datum of 1983
 Imagery/Basemap Source: 2015 Bing
 Aerial Imagery; ESRI World Transportation

- Legend**
- Category 1 Moderate Noise Impact Contour
 - Category 1 Severe Noise Impact Contour
 - Category 1 Moderate Noise Impacts
 - Category 1 Severe Noise Impacts
 - Category 2 Moderate Noise Impact Contour
 - Category 2 Severe Noise Impact Contour
 - Category 2 Moderate Noise Impacts
 - Category 2 Severe Noise Impacts
 - Category 3 Moderate Noise Impact Contour
 - Category 3 Severe Noise Impact Contour
 - Category 3 Moderate Noise Impacts
 - Category 3 Severe Noise Impacts
 - CSXT Mileposts
 - Track - Existing
 - Stations
 - Proposed Stations
 - CSXT ROW (County Parcel Data)
 - City/County Boundary

**Appendix B
 Noise Analysis
 Area 2:
 Northern Virginia**

\\dcis-main\gis_data\GIS\Projects\0115-45_VA_Depot\Rail\Public\GIS\Tech_Reports\Noise\Area2_Mapbook_11x17_WEB.mxd | Last Updated: 08/15/2017

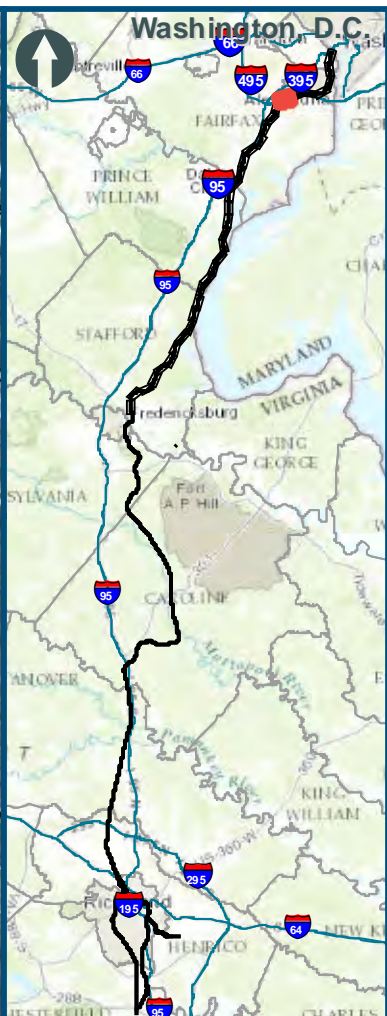
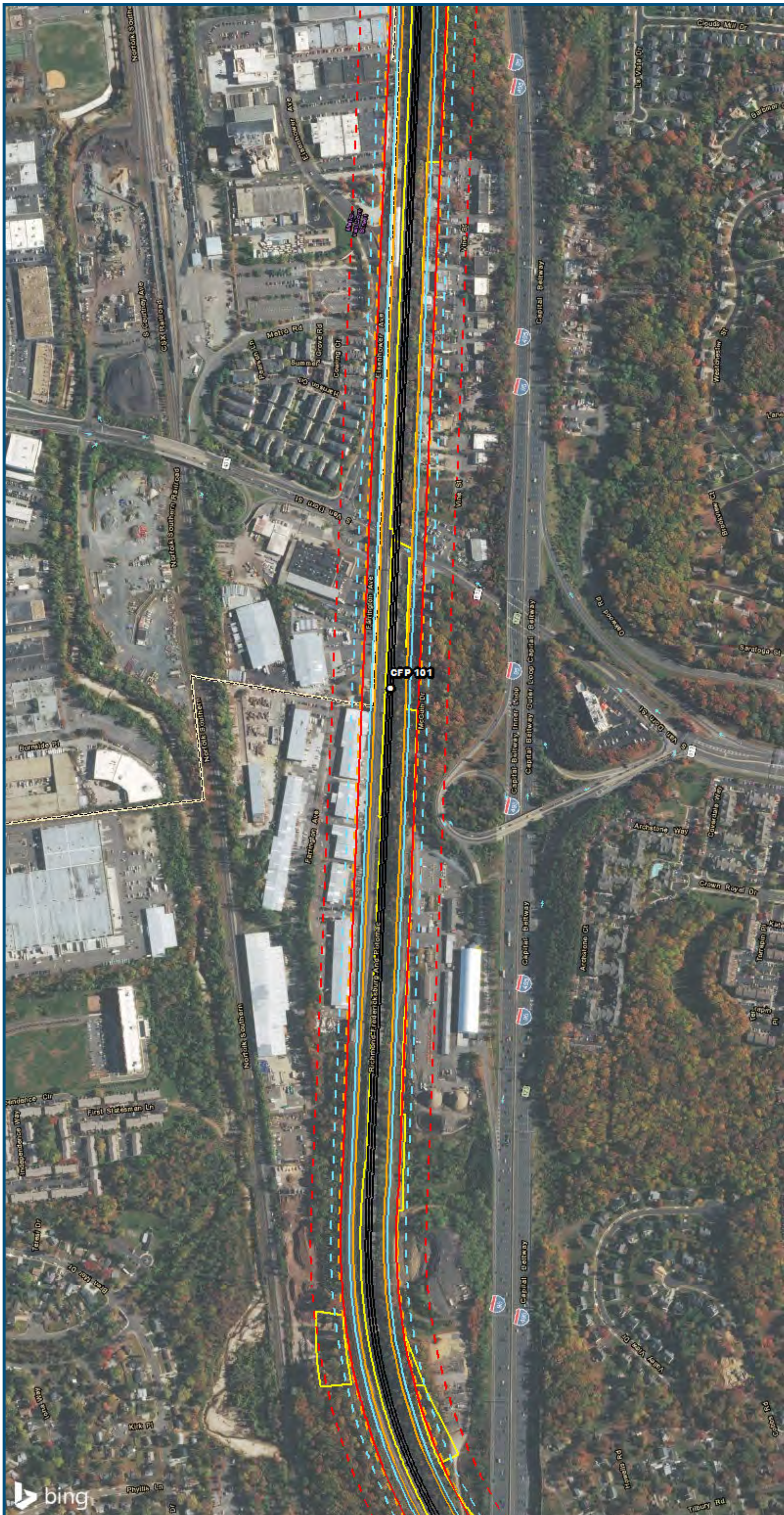


0 250 500
 Feet
 1 inch = 500 feet
 @ 11 x 17 inches
 Projection: Lambert Conformal Conic
 State Plane Virginia North FIPS 4501 Feet
 North American Datum of 1983
 Imagery/Basemap Source: 2015 Bing
 Aerial Imagery; ESRI World Transportation

- Legend**
- Category 1 Moderate Noise Impact Contour
 - Category 1 Severe Noise Impact Contour
 - Category 1 Moderate Noise Impacts
 - Category 1 Severe Noise Impacts
 - Category 2 Moderate Noise Impact Contour
 - Category 2 Severe Noise Impact Contour
 - Category 2 Moderate Noise Impacts
 - Category 2 Severe Noise Impacts
 - Category 3 Moderate Noise Impact Contour
 - Category 3 Severe Noise Impact Contour
 - Category 3 Moderate Noise Impacts
 - Category 3 Severe Noise Impacts
 - CSXT Mileposts
 - Track - Existing
 - Stations
 - Proposed Stations
 - CSXT ROW (County Parcel Data)
 - City/County Boundary

**Appendix B
 Noise Analysis
 Area 2:
 Northern Virginia**

\\dcis-main\gis_data\GIS\Projects\0115-46_VA_Depot\Rail-Public\T-transportation\0239056_RAPS-4\IT-Dev-Concept\Eng\map_docs\mxd\0115-46_VA_Depot\Rail-Public\T-transportation\0239056_Versions\NoiseVib_Area2_Mapbook_11x17_WEB.mxd | Last Updated: 08/15/2017

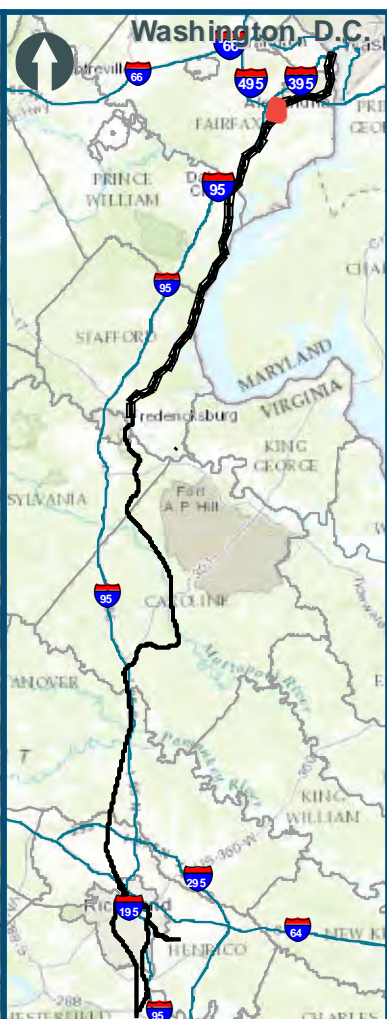
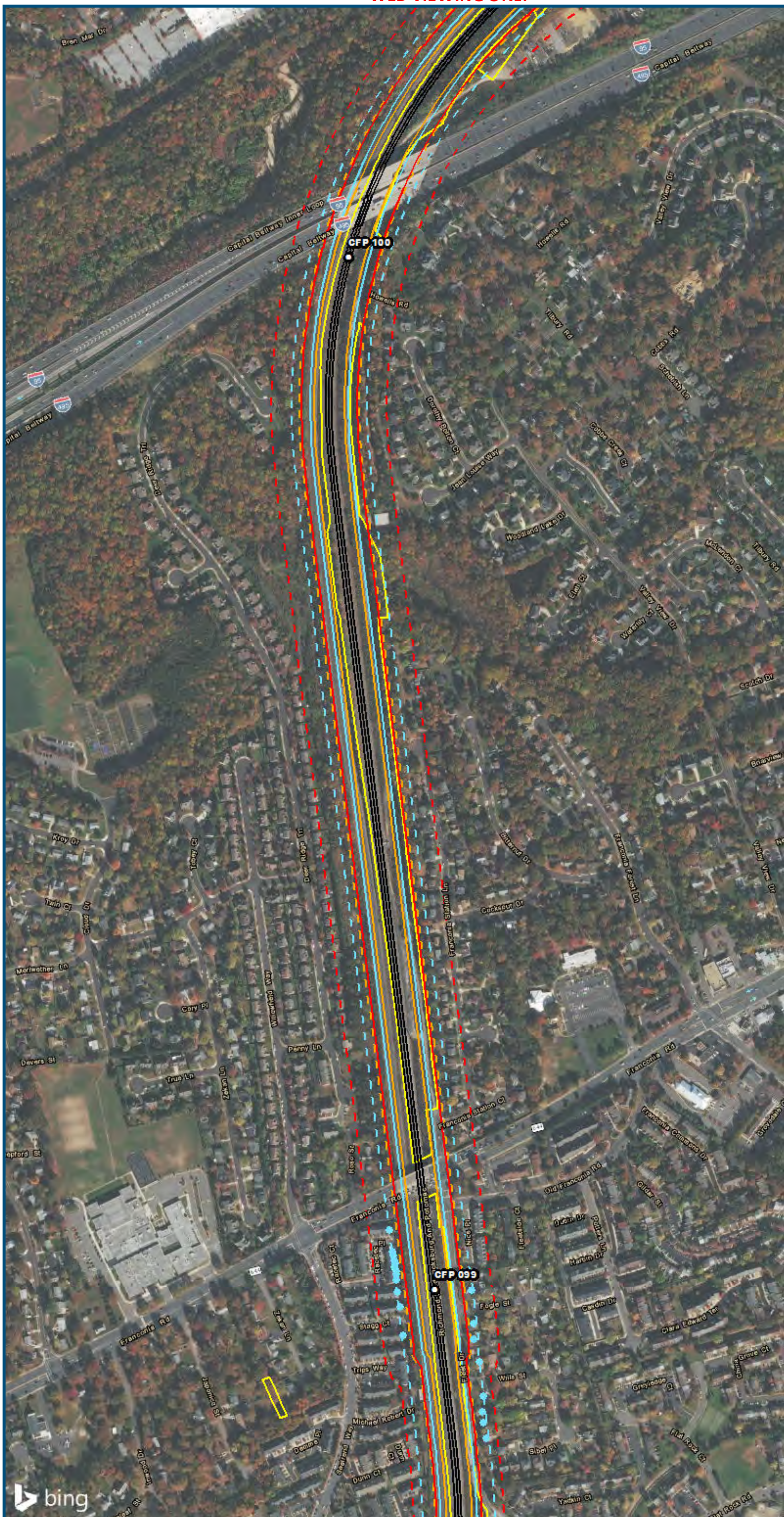


0 250 500
 Feet
 1 inch = 500 feet
 @ 11 x 17 inches
 Projection: Lambert Conformal Conic
 State Plane Virginia North FIPS 4501 Feet
 North American Datum of 1983
 Imagery/Basemap Source: 2015 Bing
 Aerial Imagery; ESRI World Transportation

Legend

- Category 1 Moderate Noise Impact Contour
- Category 1 Severe Noise Impact Contour
- Category 1 Moderate Noise Impacts
- Category 1 Severe Noise Impacts
- Category 2 Moderate Noise Impact Contour
- Category 2 Severe Noise Impact Contour
- Category 2 Moderate Noise Impacts
- Category 2 Severe Noise Impacts
- Category 3 Moderate Noise Impact Contour
- Category 3 Severe Noise Impact Contour
- Category 3 Moderate Noise Impacts
- Category 3 Severe Noise Impacts
- CSXT Mileposts
- Track - Existing
- Stations
- Proposed Stations
- CSXT ROW (County Parcel Data)
- City/County Boundary

**Appendix B
 Noise Analysis
 Area 2:
 Northern Virginia**

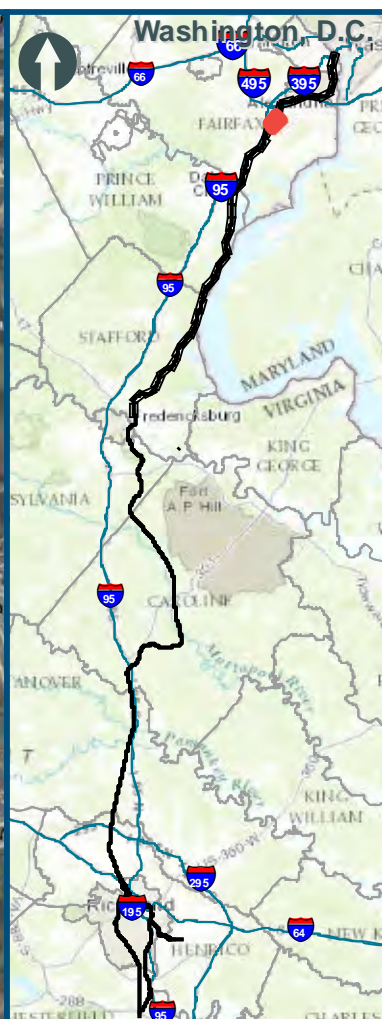


0 250 500
 Feet
 1 inch = 500 feet
 @ 11 x 17 inches
 Projection: Lambert Conformal Conic
 State: Plane Virginia North FIPS 4501 Feet
 North American Datum of 1983
 Imagery/Basemap Source: 2015 Bing
 Aerial Imagery; ESRI World Transportation

- Legend**
- - - Category 1 Moderate Noise Impact Contour
 - Category 1 Severe Noise Impact Contour
 - Category 1 Moderate Noise Impacts
 - Category 1 Severe Noise Impacts
 - - - Category 2 Moderate Noise Impact Contour
 - Category 2 Severe Noise Impact Contour
 - Category 2 Moderate Noise Impacts
 - Category 2 Severe Noise Impacts
 - - - Category 3 Moderate Noise Impact Contour
 - Category 3 Severe Noise Impact Contour
 - Category 3 Moderate Noise Impacts
 - Category 3 Severe Noise Impacts
 - CSXT Mileposts
 - Track - Existing
 - Stations
 - Proposed Stations
 - CSXT ROW (County Parcel Data)
 - City/County Boundary

**Appendix B
 Noise Analysis
 Area 2:
 Northern Virginia**

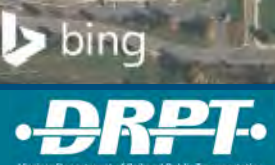
\\dcis-main\gis_data\GIS\Projects\0115-46_VA_Dep\Rail-Public\Transportation\0239056_RAPS-4\ITDev-Concept\Eng\map_docs\mxd\0239056_Versions\NoiseVib_Area2_Mapbook_11x17_WEB.mxd | Last Updated: 08/15/2017



0 250 500
 Feet
 1 inch = 500 feet
 @ 11 x 17 inches
 Projection: Lambert Conformal Conic
 State Plane Virginia North FIPS 4501 Feet
 North American Datum of 1983
 Imagery/Basemap Source: 2015 Bing
 Aerial Imagery; ESRI World Transportation

- Legend**
- Category 1 Moderate Noise Impact Contour
 - Category 1 Severe Noise Impact Contour
 - Category 1 Moderate Noise Impacts
 - Category 1 Severe Noise Impacts
 - Category 2 Moderate Noise Impact Contour
 - Category 2 Severe Noise Impact Contour
 - Category 2 Moderate Noise Impacts
 - Category 2 Severe Noise Impacts
 - Category 3 Moderate Noise Impact Contour
 - Category 3 Severe Noise Impact Contour
 - Category 3 Moderate Noise Impacts
 - Category 3 Severe Noise Impacts
 - CSXT Mileposts
 - Track - Existing
 - Stations
 - Proposed Stations
 - CSXT ROW (County Parcel Data)
 - City/County Boundary

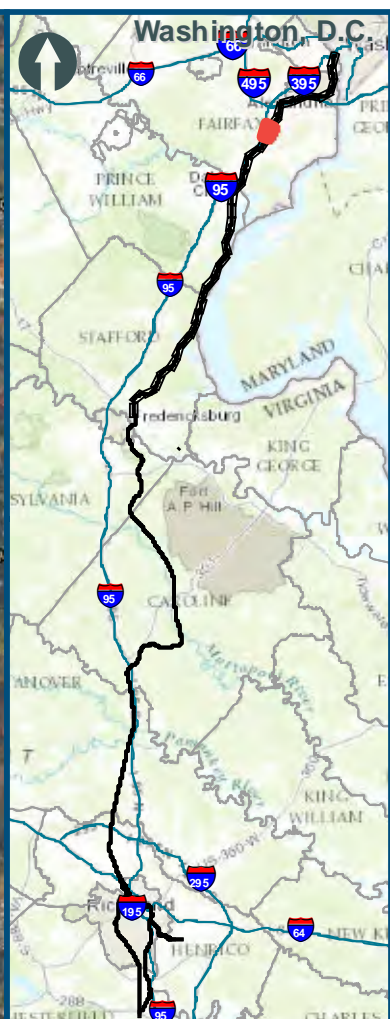
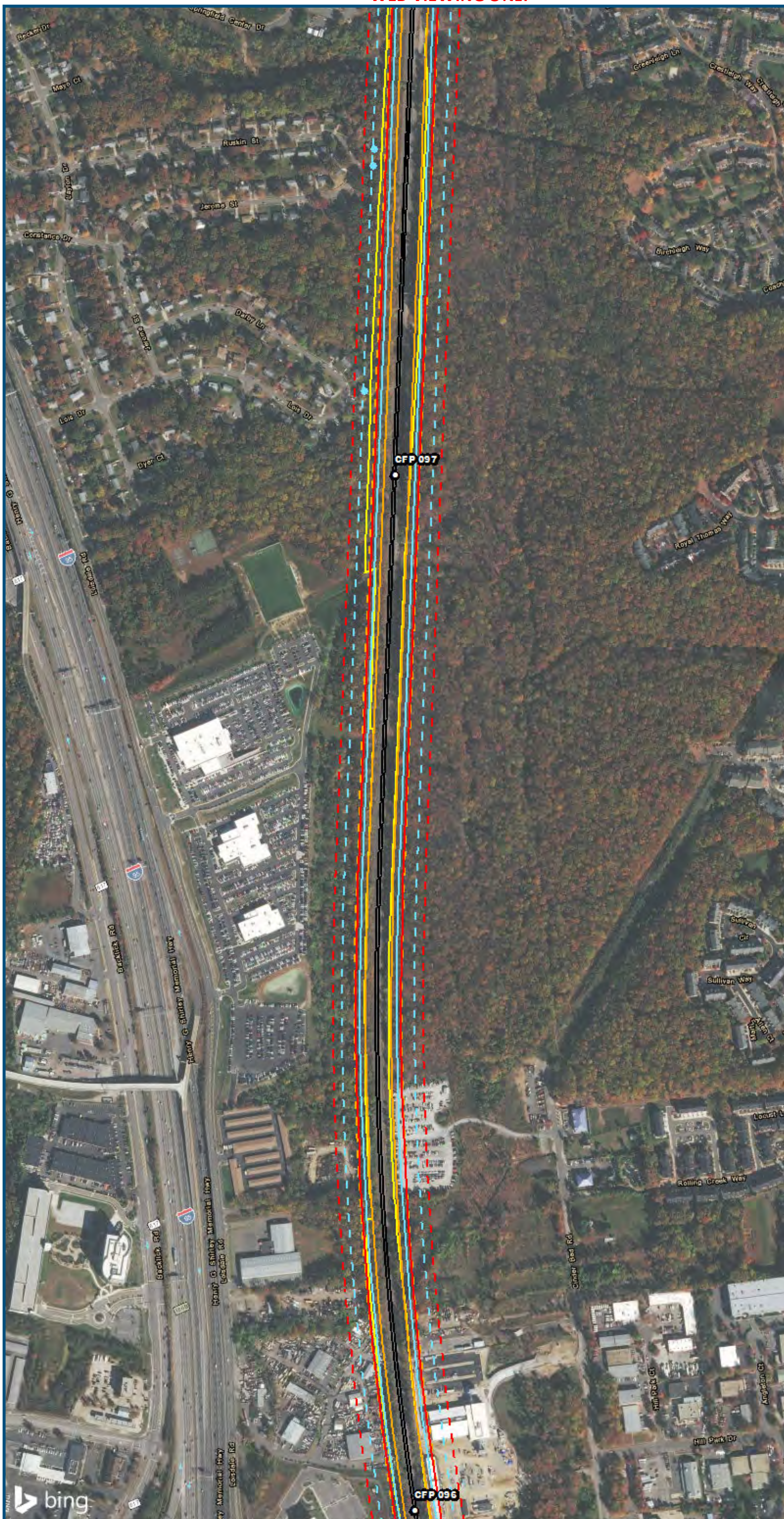
**Appendix B
 Noise Analysis
 Area 2:
 Northern Virginia**



www.DC2RVArail.com



\\dcis-main\gis_data\GIS\Projects\0115-46_VA\DeptofRails-Public\Transportation\0239056_RAPS-4\ITDev-Concept\Eng\map_docs\mxd\01EIS\Tech_Reports\Noise\Area2_Mapbook_11x17_WEB.mxd | Last Updated: 08/15/2017

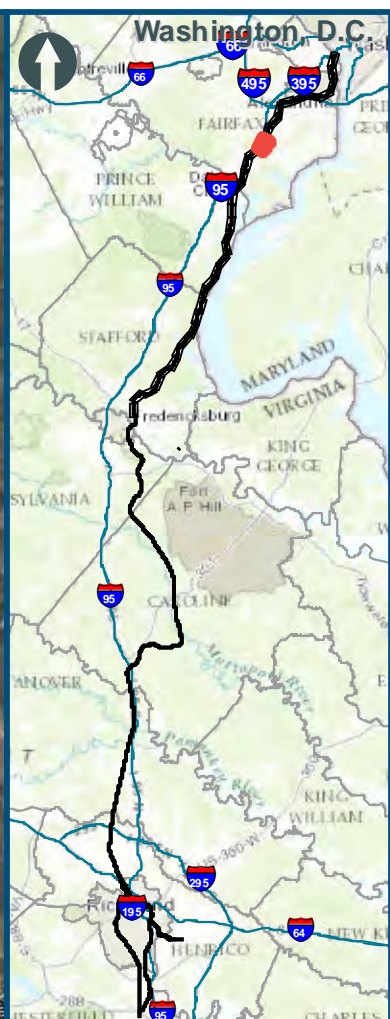


0 250 500
 Feet
 1 inch = 500 feet
 @ 11 x 17 inches
 Projection: Lambert Conformal Conic
 State Plane Virginia North FIPS 4501 Feet
 North American Datum of 1983
 Imagery/Basemap Source: 2015 Bing
 Aerial Imagery; ESRI World Transportation

- Legend**
- Category 1 Moderate Noise Impact Contour
 - Category 1 Severe Noise Impact Contour
 - Category 1 Moderate Noise Impacts
 - Category 1 Severe Noise Impacts
 - Category 2 Moderate Noise Impact Contour
 - Category 2 Severe Noise Impact Contour
 - Category 2 Moderate Noise Impacts
 - Category 2 Severe Noise Impacts
 - Category 3 Moderate Noise Impact Contour
 - Category 3 Severe Noise Impact Contour
 - Category 3 Moderate Noise Impacts
 - Category 3 Severe Noise Impacts
 - CSXT Mileposts
 - Track - Existing
 - Stations
 - Proposed Stations
 - CSXT ROW (County Parcel Data)
 - City/County Boundary

**Appendix B
 Noise Analysis
 Area 2:
 Northern Virginia**

\\dcis-main\gis_data\GIS\Projects\0115-45_VA_Depot\Rail-Public\Transportation\02393056_RAPS-4\IT\Dev-Concept\Eng\map_docs\mxd\01EIS\Tech_Reports\Noise\NoiseVib_Area2_Mapbook_11x17_WEB.mxd | Last Updated: 08/15/2017

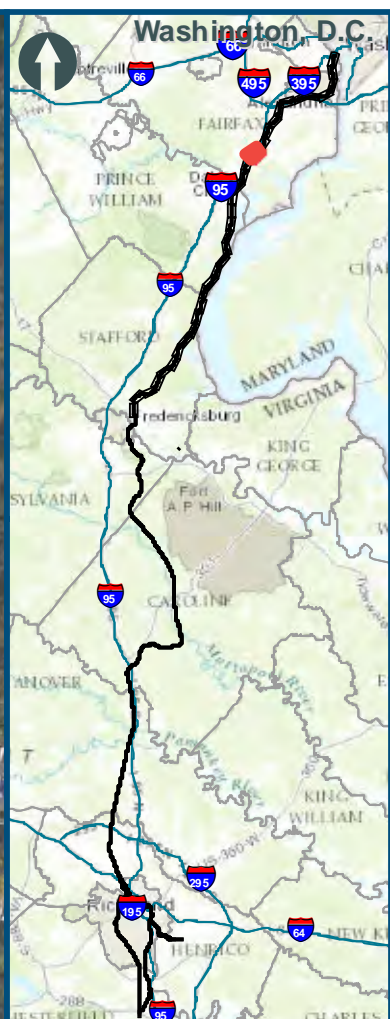
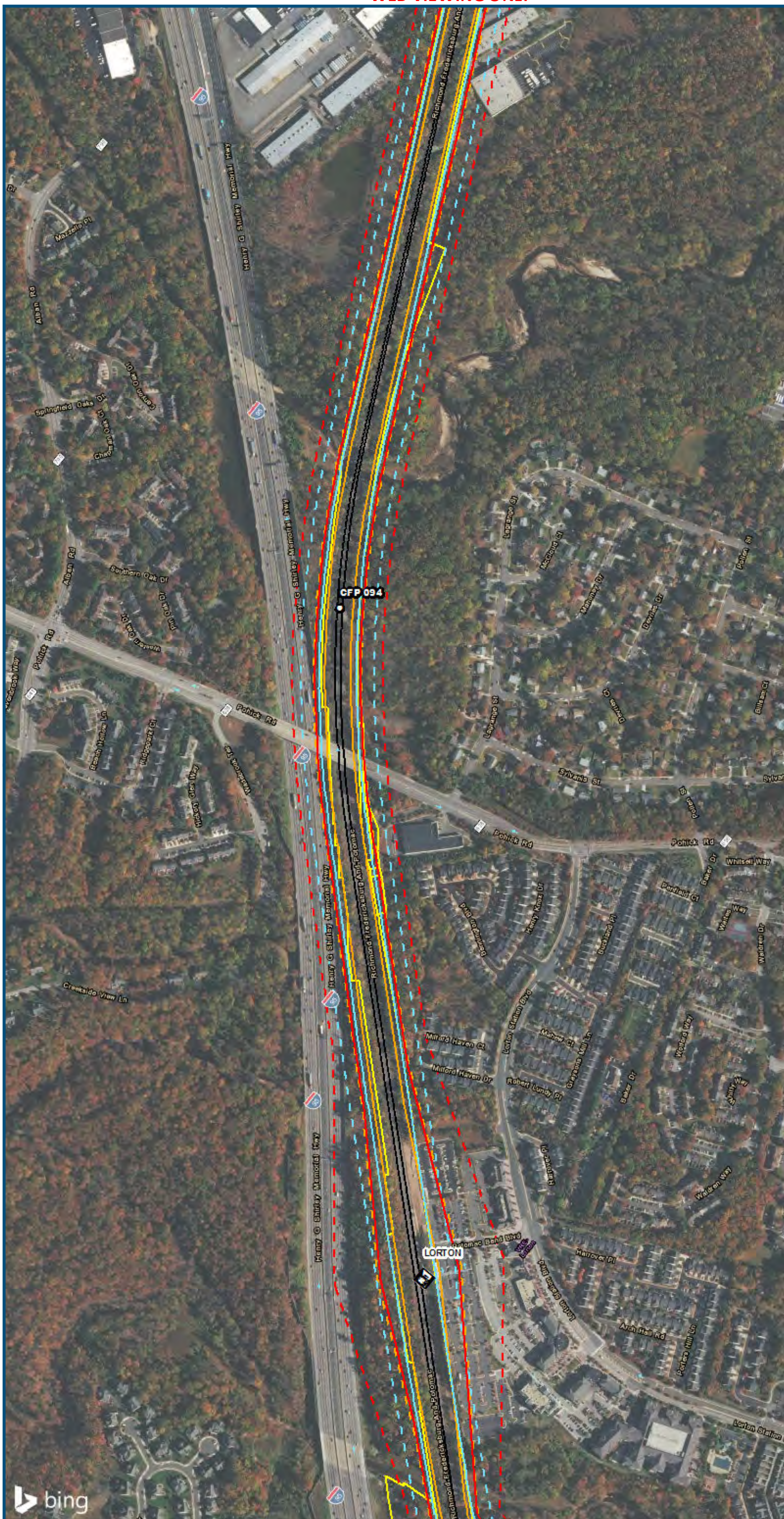


0 250 500
 Feet
 1 inch = 500 feet
 @ 11 x 17 inches
 Projection: Lambert Conformal Conic
 State Plane Virginia North FIPS 4501 Feet
 North American Datum of 1983
 Imagery/Basemap Source: 2015 Bing
 Aerial Imagery; ESRI World Transportation

- Legend**
- - - Category 1 Moderate Noise Impact Contour
 - Category 1 Severe Noise Impact Contour
 - Category 1 Moderate Noise Impacts
 - Category 1 Severe Noise Impacts
 - - - Category 2 Moderate Noise Impact Contour
 - Category 2 Severe Noise Impact Contour
 - Category 2 Moderate Noise Impacts
 - Category 2 Severe Noise Impacts
 - - - Category 3 Moderate Noise Impact Contour
 - Category 3 Severe Noise Impact Contour
 - Category 3 Moderate Noise Impacts
 - Category 3 Severe Noise Impacts
 - CSXT Mileposts
 - Track - Existing
 - Stations
 - Proposed Stations
 - CSXT ROW (County Parcel Data)
 - City/County Boundary

**Appendix B
 Noise Analysis
 Area 2:
 Northern Virginia**

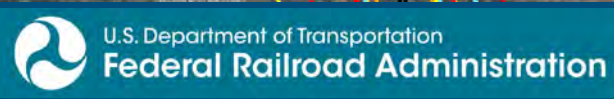
\\dcis-main\gis_data\GIS\Projects\0115-46_VA Dept of Rail-Public Transportation\02309056_RAPS-4\ITDev-Concep\Eng\map_docs\mxd\01EIS\Tech_Reports\Noise\NoiseVib_Area2_Mapbook_11x17_WEB.mxd | Last Updated: 08/15/2017



0 250 500
 Feet
 1 inch = 500 feet
 @ 11 x 17 inches
 Projection: Lambert Conformal Conic
 State: Plane Virginia North FIPS 4501 Feet
 North American Datum of 1983
 Imagery/Basemap Source: 2015 Bing
 Aerial Imagery; ESRI World Transportation

- Legend**
- - - Category 1 Moderate Noise Impact Contour
 - Category 1 Severe Noise Impact Contour
 - Category 1 Moderate Noise Impacts
 - Category 1 Severe Noise Impacts
 - - - Category 2 Moderate Noise Impact Contour
 - Category 2 Severe Noise Impact Contour
 - Category 2 Moderate Noise Impacts
 - Category 2 Severe Noise Impacts
 - - - Category 3 Moderate Noise Impact Contour
 - Category 3 Severe Noise Impact Contour
 - Category 3 Moderate Noise Impacts
 - Category 3 Severe Noise Impacts
 - CSXT Mileposts
 - Track - Existing
 - S Stations
 - S Proposed Stations
 - CSXT ROW (County Parcel Data)
 - City/County Boundary

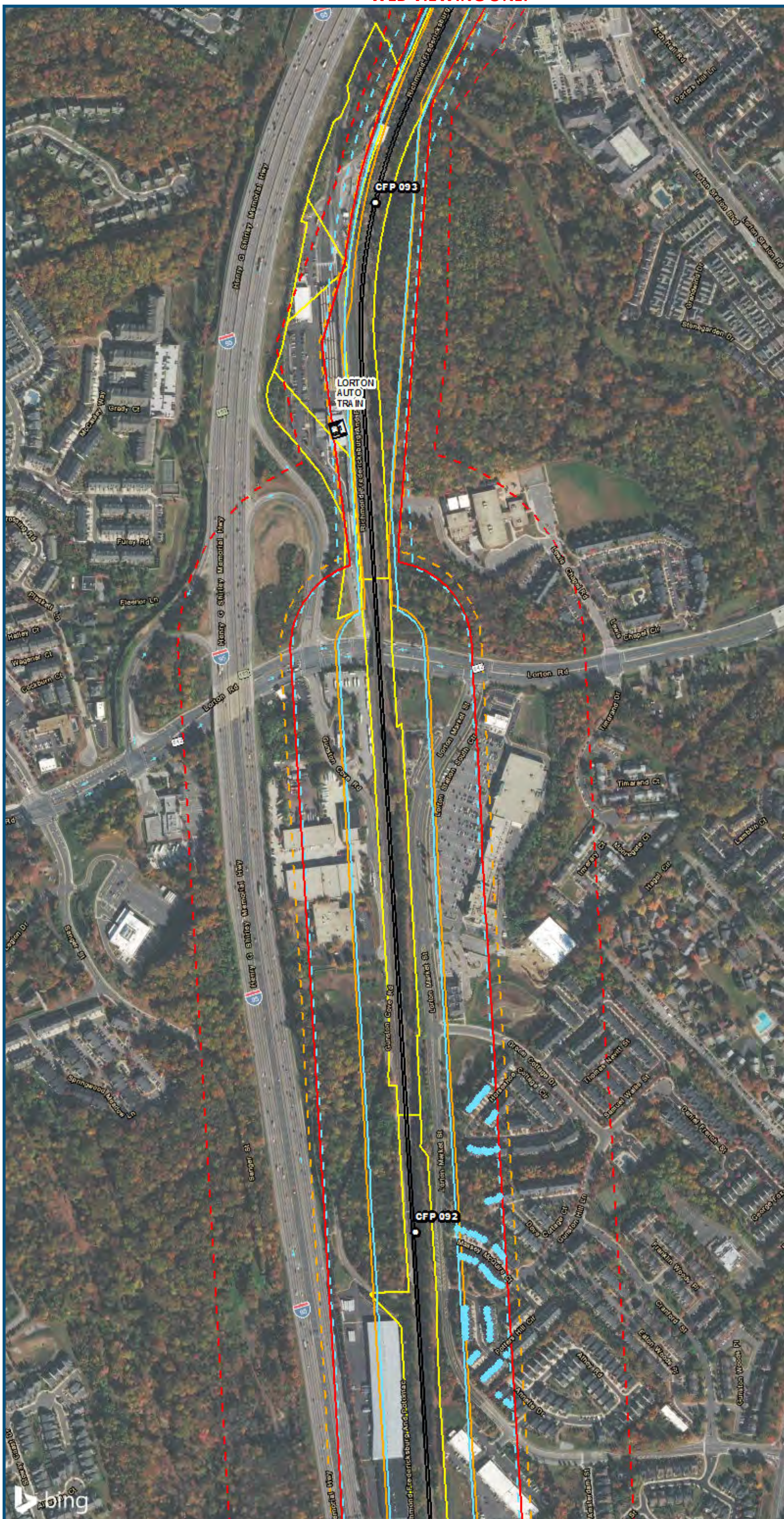
**Appendix B
 Noise Analysis
 Area 2:
 Northern Virginia**



www.DC2RVArail.com



\\dcis-main\gis_data\GIS\Projects\0115-46_VA_Dep\Rail-Public\Transportation\0239056_RAPS-4\ITDev-Concept\Eng\map_docs\mxd\0115-46_VA_Dep\Rail-Public\Transportation\0239056_Versions\Noise\Area2_Mapbook_11x17_WEB.mxd | Last Updated: 08/15/2017

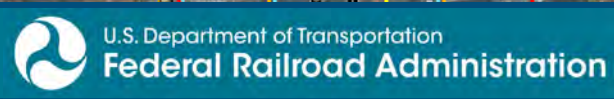


0 250 500
 Feet
 1 inch = 500 feet
 @ 11 x 17 inches
 Projection: Lambert Conformal Conic
 State Plane Virginia North FIPS 4501 Feet
 North American Datum of 1983
 Imagery/Basemap Source: 2015 Bing
 Aerial Imagery; ESRI World Transportation

- Legend**
- - - Category 1 Moderate Noise Impact Contour
 - Category 1 Severe Noise Impact Contour
 - Category 1 Moderate Noise Impacts
 - Category 1 Severe Noise Impacts
 - - - Category 2 Moderate Noise Impact Contour
 - Category 2 Severe Noise Impact Contour
 - Category 2 Moderate Noise Impacts
 - Category 2 Severe Noise Impacts
 - - - Category 3 Moderate Noise Impact Contour
 - Category 3 Severe Noise Impact Contour
 - Category 3 Moderate Noise Impacts
 - Category 3 Severe Noise Impacts
 - CSXT Mileposts
 - Track - Existing
 - Stations
 - Proposed Stations
 - CSXT ROW (County Parcel Data)
 - City/County Boundary

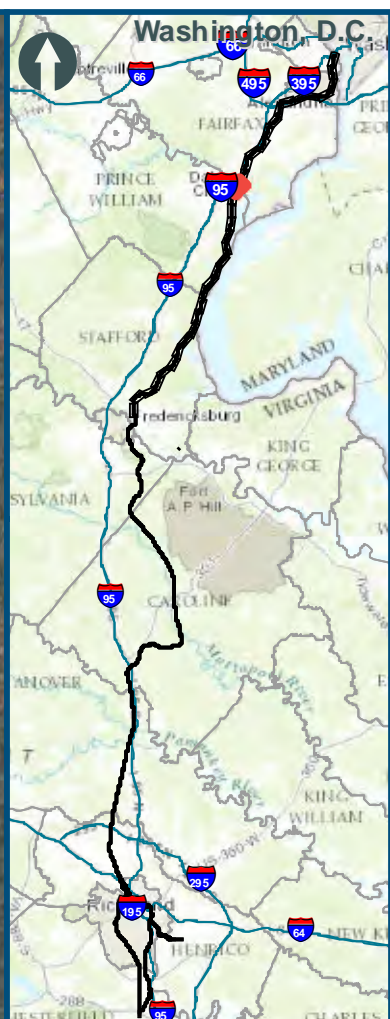
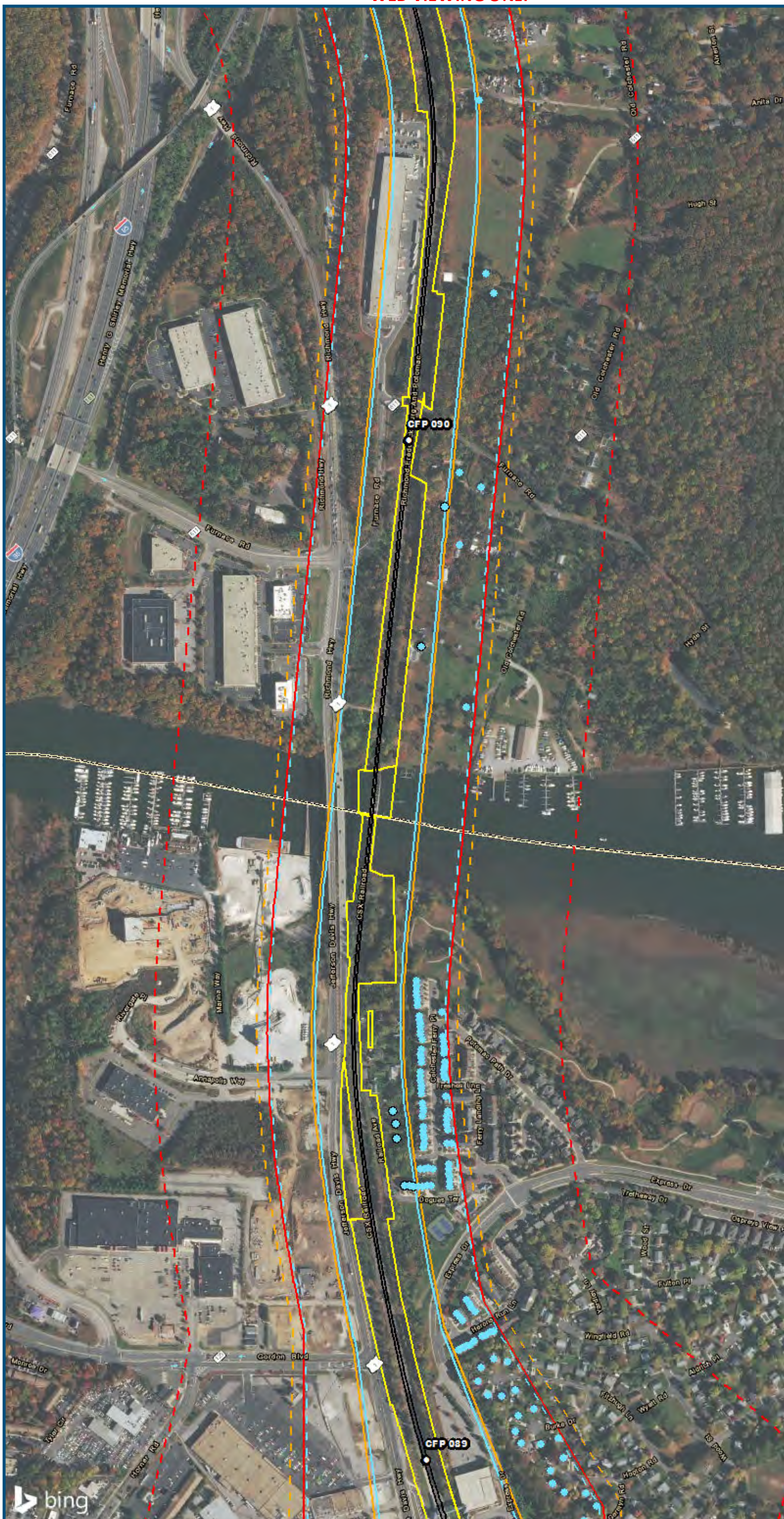
**Appendix B
 Noise Analysis
 Area 2:
 Northern Virginia**

\\dcis-main\gis_data\GIS\Projects\0115-46_VA_Depot\Rail-Public\Tech_Reports\Noise\NoiseVib_Area2_Mapbook_11x17_WEB.mxd | Last Updated: 08/15/2017



www.DC2RVArail.com



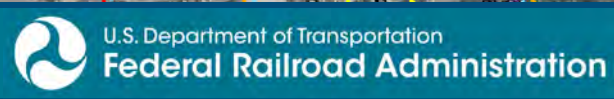


0 250 500
 Feet
 1 inch = 500 feet
 @ 11 x 17 inches
 Projection: Lambert Conformal Conic
 State Plane Virginia North FIPS 4501 Feet
 North American Datum of 1983
 Imagery/Basemap Source: 2015 Bing
 Aerial Imagery; ESRI World Transportation

- Legend**
- - - Category 1 Moderate Noise Impact Contour
 - Category 1 Severe Noise Impact Contour
 - Category 1 Moderate Noise Impacts
 - Category 1 Severe Noise Impacts
 - - - Category 2 Moderate Noise Impact Contour
 - Category 2 Severe Noise Impact Contour
 - Category 2 Moderate Noise Impacts
 - Category 2 Severe Noise Impacts
 - - - Category 3 Moderate Noise Impact Contour
 - Category 3 Severe Noise Impact Contour
 - Category 3 Moderate Noise Impacts
 - Category 3 Severe Noise Impacts
 - CSXT Mileposts
 - Track - Existing
 - Stations
 - Proposed Stations
 - CSXT ROW (County Parcel Data)
 - City/County Boundary

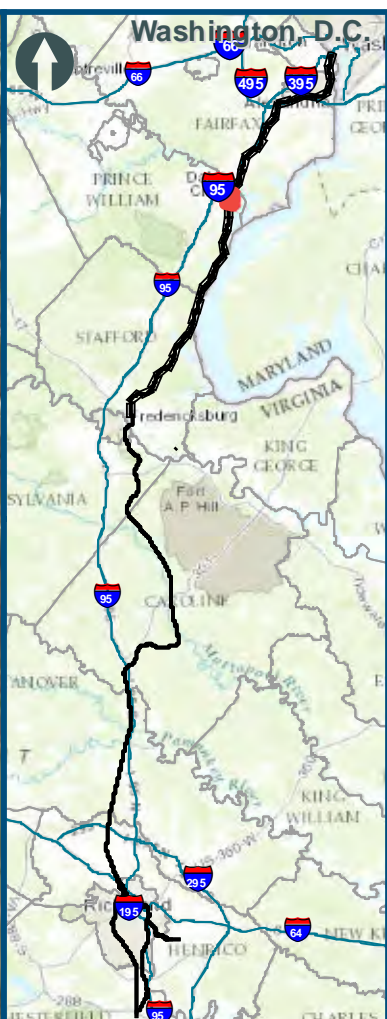
**Appendix B
 Noise Analysis
 Area 2:
 Northern Virginia**

\\dcis-main\gis_data\GIS\Projects\0115-46_VA Dept of Rail\Public\Transportation\0239056_RAPS-4\IT\Dev-Concept\Eng\map_docs\mxd\01EIS\Tech_Reports\Noise\Area2_Mapbook_11x17_WEB.mxd | Last Updated: 08/15/2017



www.DC2RVArail.com



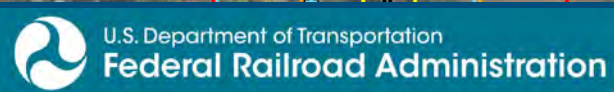


0 250 500
 Feet
 1 inch = 500 feet
 @ 11 x 17 inches
 Projection: Lambert Conformal Conic
 State Plane Virginia North FIPS 4501 Feet
 North American Datum of 1983
 Imagery/Basemap Source: 2015 Bing
 Aerial Imagery; ESRI World Transportation

- Legend**
- Category 1 Moderate Noise Impact Contour
 - Category 1 Severe Noise Impact Contour
 - Category 1 Moderate Noise Impacts
 - Category 1 Severe Noise Impacts
 - Category 2 Moderate Noise Impact Contour
 - Category 2 Severe Noise Impact Contour
 - Category 2 Moderate Noise Impacts
 - Category 2 Severe Noise Impacts
 - Category 3 Moderate Noise Impact Contour
 - Category 3 Severe Noise Impact Contour
 - Category 3 Moderate Noise Impacts
 - Category 3 Severe Noise Impacts
 - CSXT Mileposts
 - Track - Existing
 - Stations
 - Proposed Stations
 - CSXT ROW (County Parcel Data)
 - City/County Boundary

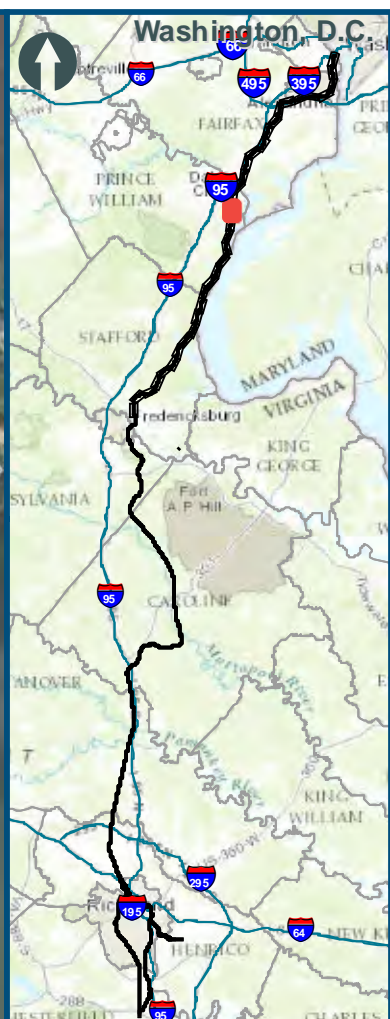
**Appendix B
 Noise Analysis
 Area 2:
 Northern Virginia**

\\dcis-main\gis_data\GIS\Projects\0115-46_VA_Depot\Rail-Public\GIS\Tech_Reports\Noise\Noise and Vibration\Mapbook_Versions\NoiseVib_Area2_Mapbook_11x17_WEB.mxd | Last Updated: 08/15/2017



www.DC2RVArail.com



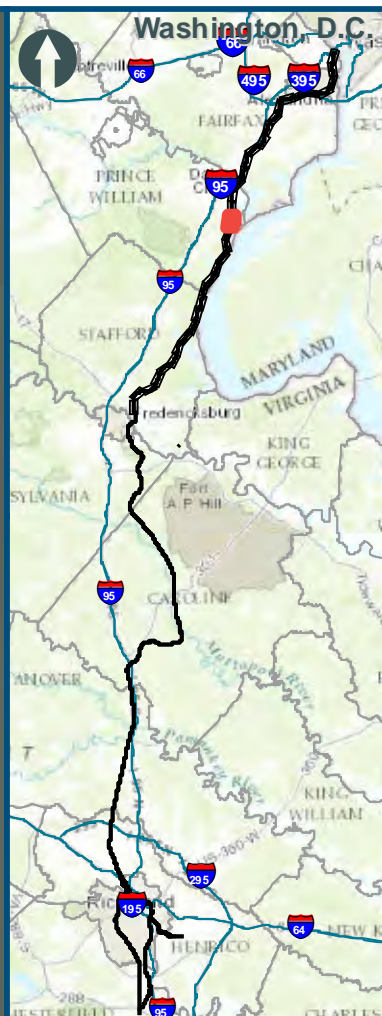


0 250 500
 Feet
 1 inch = 500 feet
 @ 11 x 17 inches
 Projection: Lambert Conformal Conic
 State Plane Virginia North FIPS 4501 Feet
 North American Datum of 1983
 Imagery/Basemap Source: 2015 Bing
 Aerial Imagery; ESRI World Transportation

- Legend**
- - - Category 1 Moderate Noise Impact Contour
 - Category 1 Severe Noise Impact Contour
 - Category 1 Moderate Noise Impacts
 - Category 1 Severe Noise Impacts
 - - - Category 2 Moderate Noise Impact Contour
 - Category 2 Severe Noise Impact Contour
 - Category 2 Moderate Noise Impacts
 - Category 2 Severe Noise Impacts
 - - - Category 3 Moderate Noise Impact Contour
 - Category 3 Severe Noise Impact Contour
 - Category 3 Moderate Noise Impacts
 - Category 3 Severe Noise Impacts
 - CSXT Mileposts
 - Track - Existing
 - Stations
 - Proposed Stations
 - CSXT ROW (County Parcel Data)
 - City/County Boundary

**Appendix B
 Noise Analysis
 Area 2:
 Northern Virginia**

\\dcis-main\gis_data\GIS\Projects\0115-46_VA_Depot\Rail-Public\Transportation\0239056_RAPS-4\ITDev-Concept\Eng\map_docs\mxd\01EIS\Tech_Reports\Noise\Area2_Mapbook_11x17_WEB.mxd | Last Updated: 08/15/2017

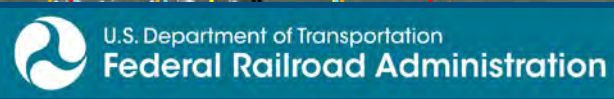


0 250 500
 Feet
 1 inch = 500 feet
 @ 11 x 17 inches
 Projection: Lambert Conformal Conic
 State: Plane Virginia North FIPS 4501 Feet
 North American Datum of 1983
 Imagery/Basemap Source: 2015 Bing
 Aerial Imagery; ESRI World Transportation

- Legend**
- Category 1 Moderate Noise Impact Contour
 - Category 1 Severe Noise Impact Contour
 - Category 1 Moderate Noise Impacts
 - Category 1 Severe Noise Impacts
 - Category 2 Moderate Noise Impact Contour
 - Category 2 Severe Noise Impact Contour
 - Category 2 Moderate Noise Impacts
 - Category 2 Severe Noise Impacts
 - Category 3 Moderate Noise Impact Contour
 - Category 3 Severe Noise Impact Contour
 - Category 3 Moderate Noise Impacts
 - Category 3 Severe Noise Impacts
 - CSXT Mileposts
 - Track - Existing
 - Stations
 - Proposed Stations
 - CSXT ROW (County Parcel Data)
 - City/County Boundary

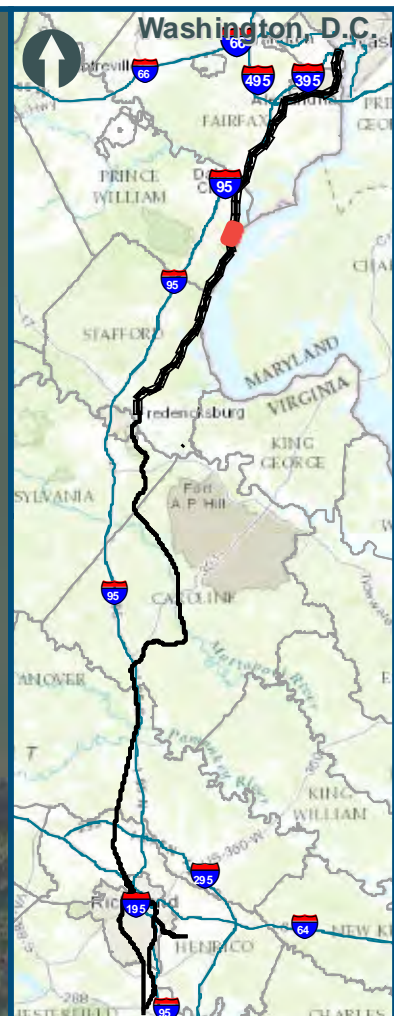
**Appendix B
 Noise Analysis
 Area 2:
 Northern Virginia**

\\dcis-main\gis_data\GIS\Projects\0115-46_VA_Dep\toRail-Public\Tech_Reports\Noise and Vibration\Map_Versions\NoiseVib_Area2_Mapbook_11x17_WEB.mxd | Last Updated: 08/15/2017



www.DC2RVArail.com



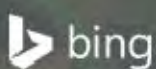


0 250 500
 Feet
 1 inch = 500 feet
 @ 11 x 17 inches
 Projection: Lambert Conformal Conic
 State Plane Virginia North FIPS 4501 Feet
 North American Datum of 1983
 Imagery/Basemap Source: 2015 Bing
 Aerial Imagery; ESRI World Transportation

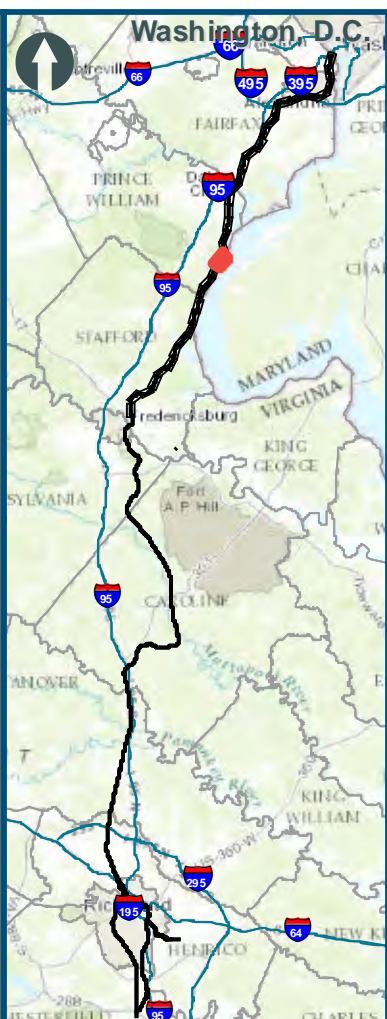
Legend

- Category 1 Moderate Noise Impact Contour
- Category 1 Severe Noise Impact Contour
- Category 1 Moderate Noise Impacts
- Category 1 Severe Noise Impacts
- Category 2 Moderate Noise Impact Contour
- Category 2 Severe Noise Impact Contour
- Category 2 Moderate Noise Impacts
- Category 2 Severe Noise Impacts
- Category 3 Moderate Noise Impact Contour
- Category 3 Severe Noise Impact Contour
- Category 3 Moderate Noise Impacts
- Category 3 Severe Noise Impacts
- CSXT Mileposts
- Track - Existing
- Stations
- Proposed Stations
- CSXT ROW (County Parcel Data)
- City/County Boundary

**Appendix B
 Noise Analysis
 Area 2:
 Northern Virginia**



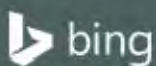
\\dcis-main\gis_data\GIS\Projects\0115-46_VA_DepotRail-PublicTransportation\0239056_RAPS-4AltDev-ConceptEng\map_docs\mxd\01EIS\Tech_Reports\NoiseandVibration\Web_Versions\NoiseVib_Area2_Mapbook_11x17_WEB.mxd | Last Updated: 08:15:2017



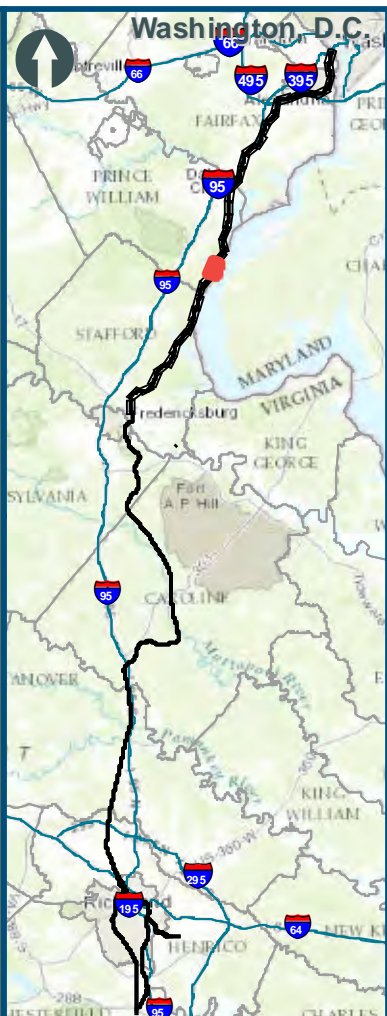
0 250 500
 Feet
 1 inch = 500 feet
 @ 11 x 17 inches
 Projection: Lambert Conformal Conic
 State Plane Virginia North FIPS 4501 Feet
 North American Datum of 1983
 Imagery/Basemap Source: 2015 Bing
 Aerial Imagery; ESRI World Transportation

- Legend**
- Category 1 Moderate Noise Impact Contour
 - Category 1 Severe Noise Impact Contour
 - Category 1 Moderate Noise Impacts
 - Category 1 Severe Noise Impacts
 - Category 2 Moderate Noise Impact Contour
 - Category 2 Severe Noise Impact Contour
 - Category 2 Moderate Noise Impacts
 - Category 2 Severe Noise Impacts
 - Category 3 Moderate Noise Impact Contour
 - Category 3 Severe Noise Impact Contour
 - Category 3 Moderate Noise Impacts
 - Category 3 Severe Noise Impacts
 - CSXT Mileposts
 - Track - Existing
 - Stations
 - Proposed Stations
 - CSXT ROW (County Parcel Data)
 - City/County Boundary

**Appendix B
 Noise Analysis
 Area 2:
 Northern Virginia**



\\dcis-main\gis_data\GIS\Projects\0115-46_VA.Dep.of.Rails-Pub\GIS\Tech_Reports\Noise and Vibration\Map_Web_Versions\NoiseVib_Area2_Mapbook_11x17_WEB.mxd | Last Updated: 08/15/2017



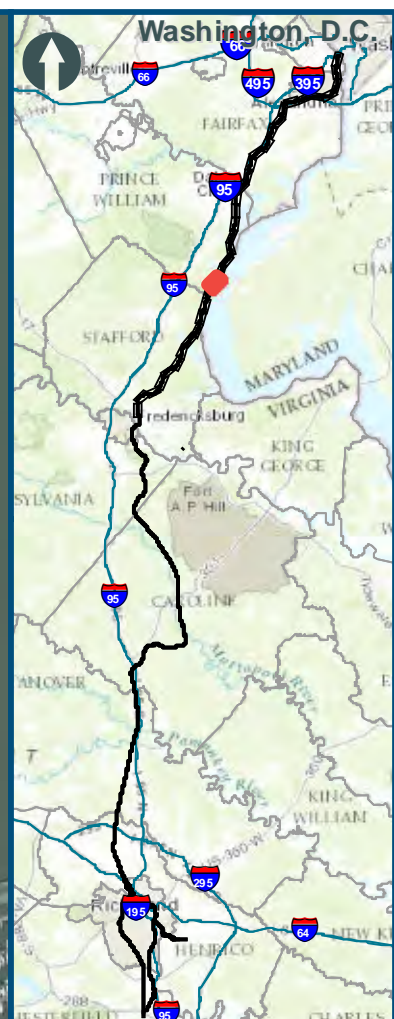
0 250 500
 Feet
 1 inch = 500 feet
 @ 11 x 17 inches
 Projection: Lambert Conformal Conic
 State Plane Virginia North FIPS 4501 Feet
 North American Datum of 1983
 Imagery/Basemap Source: 2015 Bing
 Aerial Imagery; ESRI World Transportation

- Legend**
- - - Category 1 Moderate Noise Impact Contour
 - Category 1 Severe Noise Impact Contour
 - Category 1 Moderate Noise Impacts
 - Category 1 Severe Noise Impacts
 - - - Category 2 Moderate Noise Impact Contour
 - Category 2 Severe Noise Impact Contour
 - Category 2 Moderate Noise Impacts
 - Category 2 Severe Noise Impacts
 - - - Category 3 Moderate Noise Impact Contour
 - Category 3 Severe Noise Impact Contour
 - Category 3 Moderate Noise Impacts
 - Category 3 Severe Noise Impacts
 - CSXT Mileposts
 - Track - Existing
 - Stations
 - Proposed Stations
 - CSXT ROW (County Parcel Data)
 - City/County Boundary

**Appendix B
 Noise Analysis
 Area 2:
 Northern Virginia**



\\dcis-main\gis_data\GIS\Projects\0115-46_VA_Depot\Rail-Public\Transportation\02309056_RAPS-4\IT\Dev-Concept\Eng\map_docs\mxd\01EIS\Tech_Reports\Noise and Vibration\Web_Versions\NoiseVib_Area2_Mapbook_11x17_WEB.mxd | Last Updated: 08/15/2017



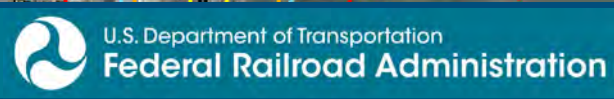
0 250 500
 Feet
 1 inch = 500 feet
 @ 11 x 17 inches
 Projection: Lambert Conformal Conic
 State: Plane Virginia North FIPS 4501 Feet
 North American Datum of 1983
 Imagery/Basemap Source: 2015 Bing
 Aerial Imagery; ESRI World Transportation

Legend

- - - Category 1 Moderate Noise Impact Contour
- Category 1 Severe Noise Impact Contour
- Category 1 Moderate Noise Impacts
- Category 1 Severe Noise Impacts
- - - Category 2 Moderate Noise Impact Contour
- Category 2 Severe Noise Impact Contour
- Category 2 Moderate Noise Impacts
- Category 2 Severe Noise Impacts
- - - Category 3 Moderate Noise Impact Contour
- Category 3 Severe Noise Impact Contour
- Category 3 Moderate Noise Impacts
- Category 3 Severe Noise Impacts
- CSXT Mileposts
- Track - Existing
- Stations
- Proposed Stations
- CSXT ROW (County Parcel Data)
- City/County Boundary

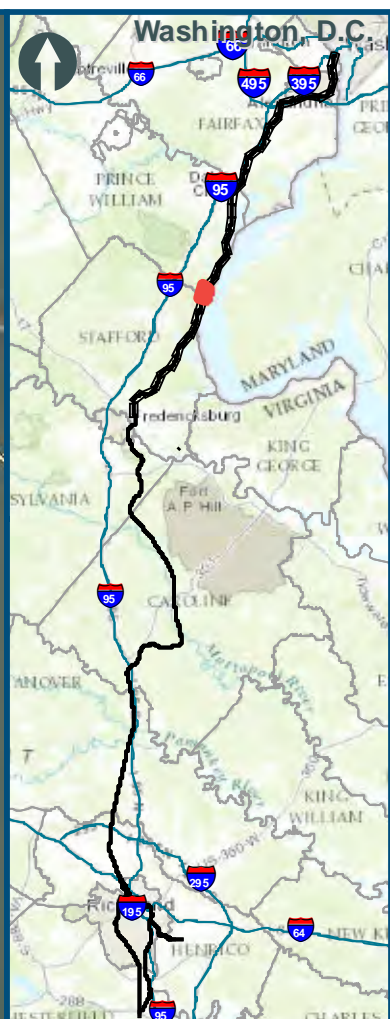
**Appendix B
 Noise Analysis
 Area 2:
 Northern Virginia**

\\dcis-main\gis_data\GIS\Projects\0115-46_VA\Deplo\Rail-Pub\fcT_ran\transportation\0239056_RAPS-4\ITDev-Concept\Eng\map_docs\mxd\0115-46_VA\Noise\NoiseandVbrat\onWeb_Versions\NoiseVib_Area2_Mapbook_11x17_WEB.mxd | Last Updated: 08/15/2017



www.DC2RVArail.com

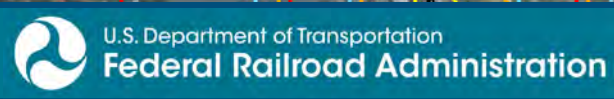




0 250 500
 Feet
 1 inch = 500 feet
 @ 11 x 17 inches
 Projection: Lambert Conformal Conic
 State Plane Virginia North FIPS 4501 Feet
 North American Datum of 1983
 Imagery/Basemap Source: 2015 Bing
 Aerial Imagery; ESRI World Transportation

- Legend**
- - - Category 1 Moderate Noise Impact Contour
 - Category 1 Severe Noise Impact Contour
 - Category 1 Moderate Noise Impacts
 - Category 1 Severe Noise Impacts
 - Category 2 Moderate Noise Impact Contour
 - Category 2 Severe Noise Impact Contour
 - Category 2 Moderate Noise Impacts
 - Category 2 Severe Noise Impacts
 - Category 3 Moderate Noise Impact Contour
 - Category 3 Severe Noise Impact Contour
 - Category 3 Moderate Noise Impacts
 - Category 3 Severe Noise Impacts
 - CSXT Mileposts
 - Track - Existing
 - Stations
 - Proposed Stations
 - CSXT ROW (County Parcel Data)
 - City/County Boundary

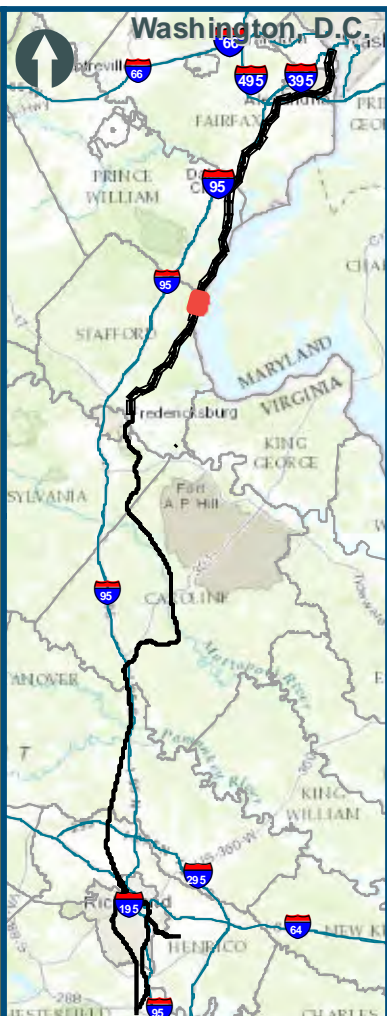
**Appendix B
 Noise Analysis
 Area 2:
 Northern Virginia**



www.DC2RVArail.com



\\dcis-main\gis_data\GIS\Projects\0115-46_VA_Dep\toRail-Pub\toT transportation\0239056_RAPS-4\ITDev-Con\cap\Eng\map_docs\mxd\01EIS\Tech_Reports\Noise and Vibration\Web_Versions\NoiseVib_Area2_Mapbook_11x17_WEB.mxd | Last Updated: 08.15.2017



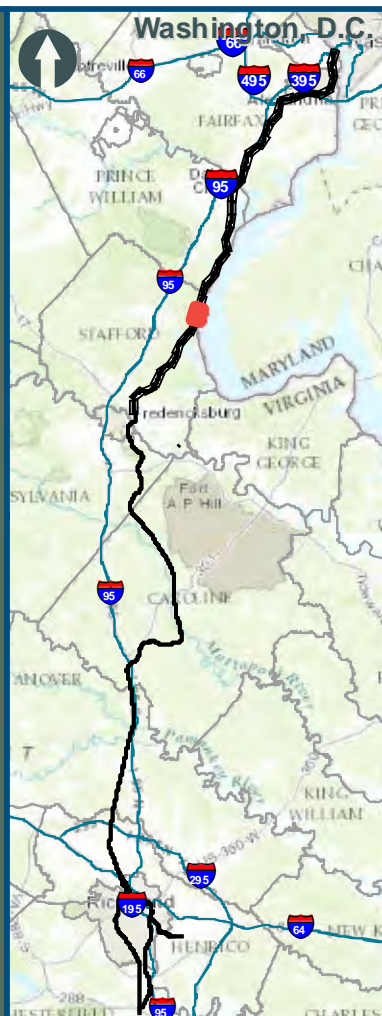
0 250 500
 Feet
 1 inch = 500 feet
 @ 11 x 17 inches
 Projection: Lambert Conformal Conic
 State Plane Virginia North FIPS 4501 Feet
 North American Datum of 1983
 Imagery/Basemap Source: 2015 Bing
 Aerial Imagery; ESRI World Transportation

- Legend**
- Category 1 Moderate Noise Impact Contour
 - Category 1 Severe Noise Impact Contour
 - Category 1 Moderate Noise Impacts
 - Category 1 Severe Noise Impacts
 - Category 2 Moderate Noise Impact Contour
 - Category 2 Severe Noise Impact Contour
 - Category 2 Moderate Noise Impacts
 - Category 2 Severe Noise Impacts
 - Category 3 Moderate Noise Impact Contour
 - Category 3 Severe Noise Impact Contour
 - Category 3 Moderate Noise Impacts
 - Category 3 Severe Noise Impacts
 - CSXT Mileposts
 - Track - Existing
 - Stations
 - Proposed Stations
 - CSXT ROW (County Parcel Data)
 - City/County Boundary

**Appendix B
 Noise Analysis
 Area 2:
 Northern Virginia**



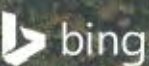
\\dcis-main\gis_data\GIS\Projects\0115-46_VA_Dep\toRail-Public\Transportation\0239056_RAPS-4AltDev-Concept\Eng\map_docs\mxd\01EIS\Tech_Reports\Noise and Vibration\Web_Versions\NoiseVib_Area2_Mapbook_11x17_WEB.mxd | Last Updated: 08:15:2017



0 250 500
 Feet
 1 inch = 500 feet
 @ 11 x 17 inches
 Projection: Lambert Conformal Conic
 State Plane Virginia North FIPS 4501 Feet
 North American Datum of 1983
 Imagery/Basemap Source: 2015 Bing
 Aerial Imagery; ESRI World Transportation

- Legend**
- Category 1 Moderate Noise Impact Contour
 - Category 1 Severe Noise Impact Contour
 - Category 1 Moderate Noise Impacts
 - Category 1 Severe Noise Impacts
 - Category 2 Moderate Noise Impact Contour
 - Category 2 Severe Noise Impact Contour
 - Category 2 Moderate Noise Impacts
 - Category 2 Severe Noise Impacts
 - Category 3 Moderate Noise Impact Contour
 - Category 3 Severe Noise Impact Contour
 - Category 3 Moderate Noise Impacts
 - Category 3 Severe Noise Impacts
 - CSXT Mileposts
 - Track - Existing
 - Stations
 - Proposed Stations
 - CSXT ROW (County Parcel Data)
 - City/County Boundary

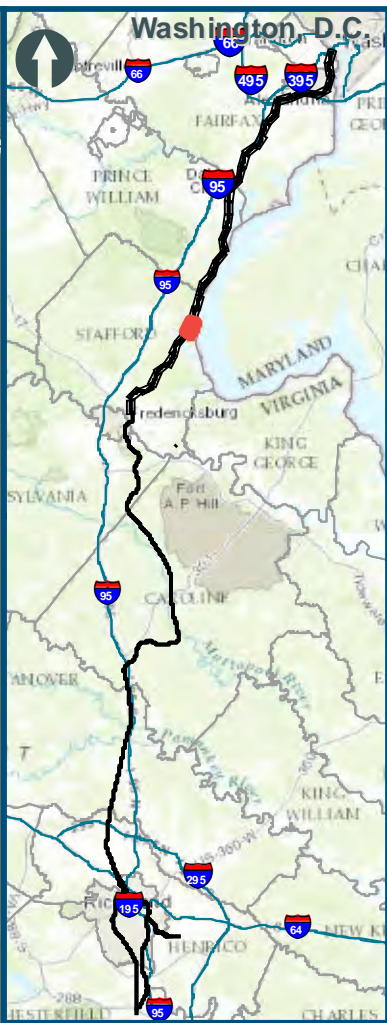
**Appendix B
 Noise Analysis
 Area 2:
 Northern Virginia**



www.DC2RVArail.com



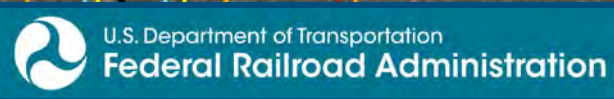
\\c:\main\gis_data\GIS\Projects\0115_46_VA\DeplofRail-Pub\fcT transportation\023075056_RAPS-4\ITDev-Concept\Eng\map_docs\mxd\01EIS\Tech_Reports\Noise and Vibration\Web_Versions\NoiseVib_Area2_Mapbook_11x17_WEB.mxd | Last Updated: 08/15/2017



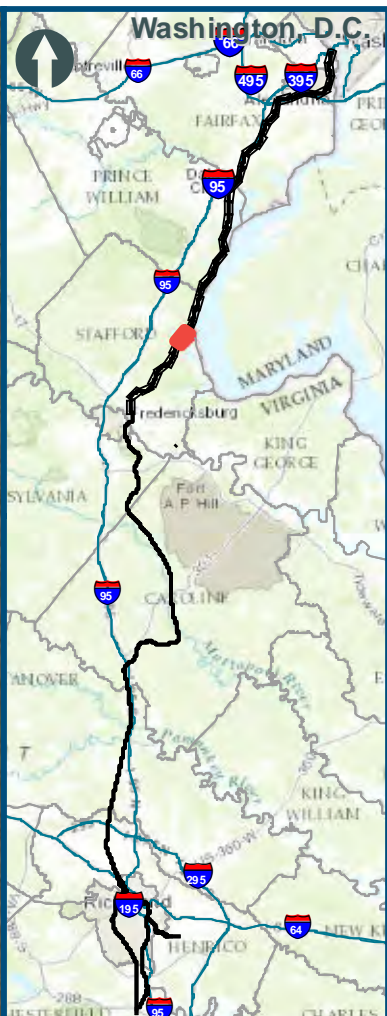
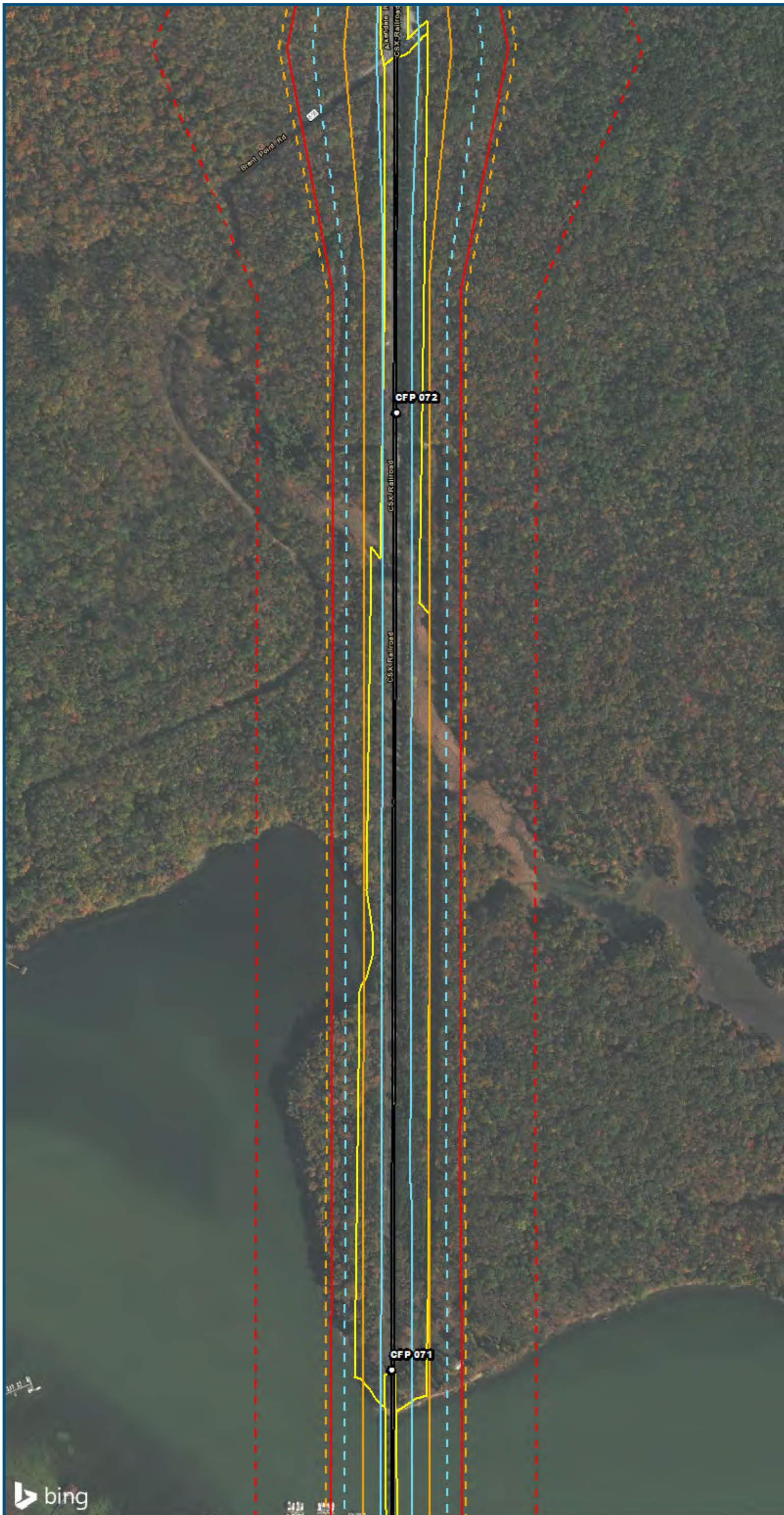
0 250 500
 Feet
 1 inch = 500 feet
 @ 11 x 17 inches
 Projection: Lambert Conformal Conic
 State Plane Virginia North FIPS 4501 Feet
 North American Datum of 1983
 Imagery/Basemap Source: 2015 Bing
 Aerial Imagery; ESRI World Transportation

- Legend**
- - - Category 1 Moderate Noise Impact Contour
 - Category 1 Severe Noise Impact Contour
 - Category 1 Moderate Noise Impacts
 - Category 1 Severe Noise Impacts
 - - - Category 2 Moderate Noise Impact Contour
 - Category 2 Severe Noise Impact Contour
 - Category 2 Moderate Noise Impacts
 - Category 2 Severe Noise Impacts
 - - - Category 3 Moderate Noise Impact Contour
 - Category 3 Severe Noise Impact Contour
 - Category 3 Moderate Noise Impacts
 - Category 3 Severe Noise Impacts
 - CSXT Mileposts
 - Track - Existing
 - Stations
 - Proposed Stations
 - CSXT ROW (County Parcel Data)
 - City/County Boundary

**Appendix B
 Noise Analysis
 Area 2:
 Northern Virginia**



\\dcis-main\gis_data\GIS\Projects\0115-46_VA_Dep\Rail\Rail-Public\Transportation\0239056_RAPS-4AltDev-Concept\Eng\map_docs\mxd\01EIS\Tech_Reports\Noise and Vibration\Web_Versions\NoiseVib_Area2_Mapbook_11x17_WEB.mxd | Last Updated: 08/15/2017

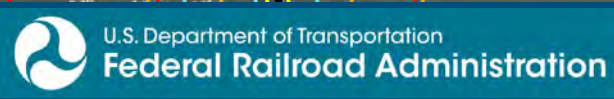


0 250 500
 Feet
 1 inch = 500 feet
 @ 11 x 17 inches
 Projection: Lambert Conformal Conic
 State Plane Virginia North FIPS 4501 Feet
 North American Datum of 1983
 Imagery/Basemap Source: 2015 Bing
 Aerial Imagery; ESRI World Transportation

- Legend**
- - - Category 1 Moderate Noise Impact Contour
 - Category 1 Severe Noise Impact Contour
 - Category 1 Moderate Noise Impacts
 - Category 1 Severe Noise Impacts
 - - - Category 2 Moderate Noise Impact Contour
 - Category 2 Severe Noise Impact Contour
 - Category 2 Moderate Noise Impacts
 - Category 2 Severe Noise Impacts
 - - - Category 3 Moderate Noise Impact Contour
 - Category 3 Severe Noise Impact Contour
 - Category 3 Moderate Noise Impacts
 - Category 3 Severe Noise Impacts
 - CSXT Mileposts
 - Track - Existing
 - Stations
 - Proposed Stations
 - CSXT ROW (County Parcel Data)
 - City/County Boundary

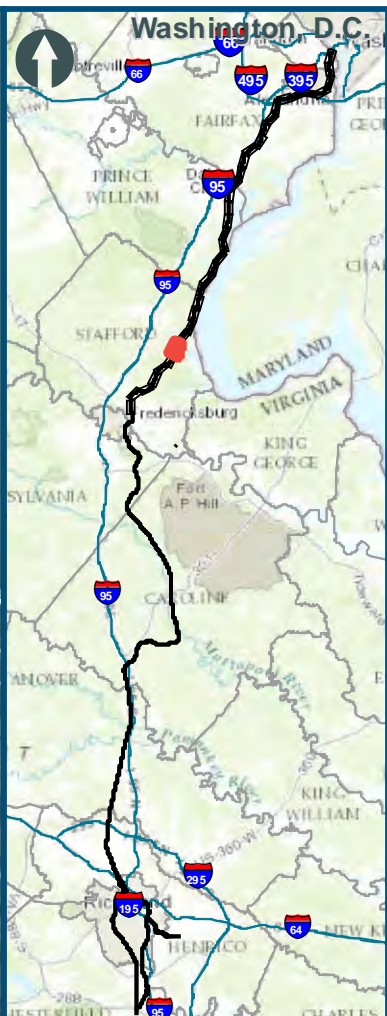
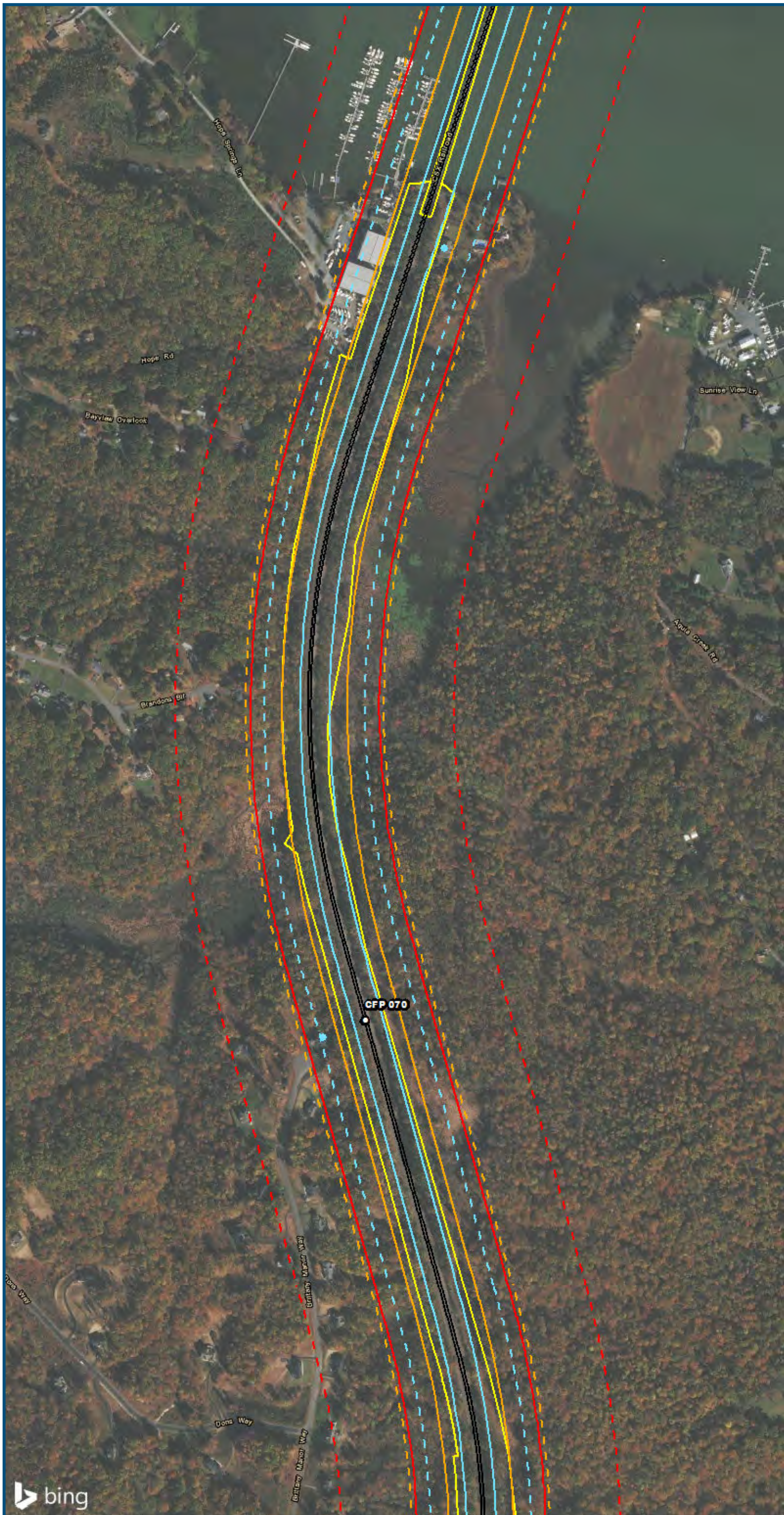
**Appendix B
 Noise Analysis
 Area 2:
 Northern Virginia**

\\cis-main\gis_data\GIS\Projects\0115-46_VA_Dep\toRail-Public\Transportation\0239056_RAPS-4AltDev-Concept\Eng\map_docs\mxd\0115-46_VA_Dep\toRail-Public\Transportation\0239056_RAPS-4AltDev-Concept\Noise and Vibration\Map_Web_Versions\NoiseVib_Area2_Mapbook_11x17_WEB.mxd | Last Updated: 08/15/2017



www.DC2RVArail.com





0 250 500
 Feet
 1 inch = 500 feet
 @ 11 x 17 inches
 Projection: Lambert Conformal Conic
 State Plane Virginia North FIPS 4501 Feet
 North American Datum of 1983
 Imagery/Basemap Source: 2015 Bing
 Aerial Imagery; ESRI World Transportation

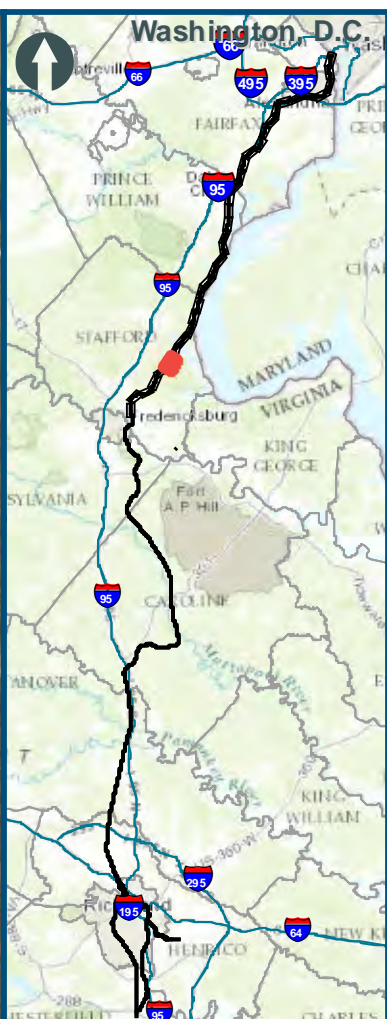
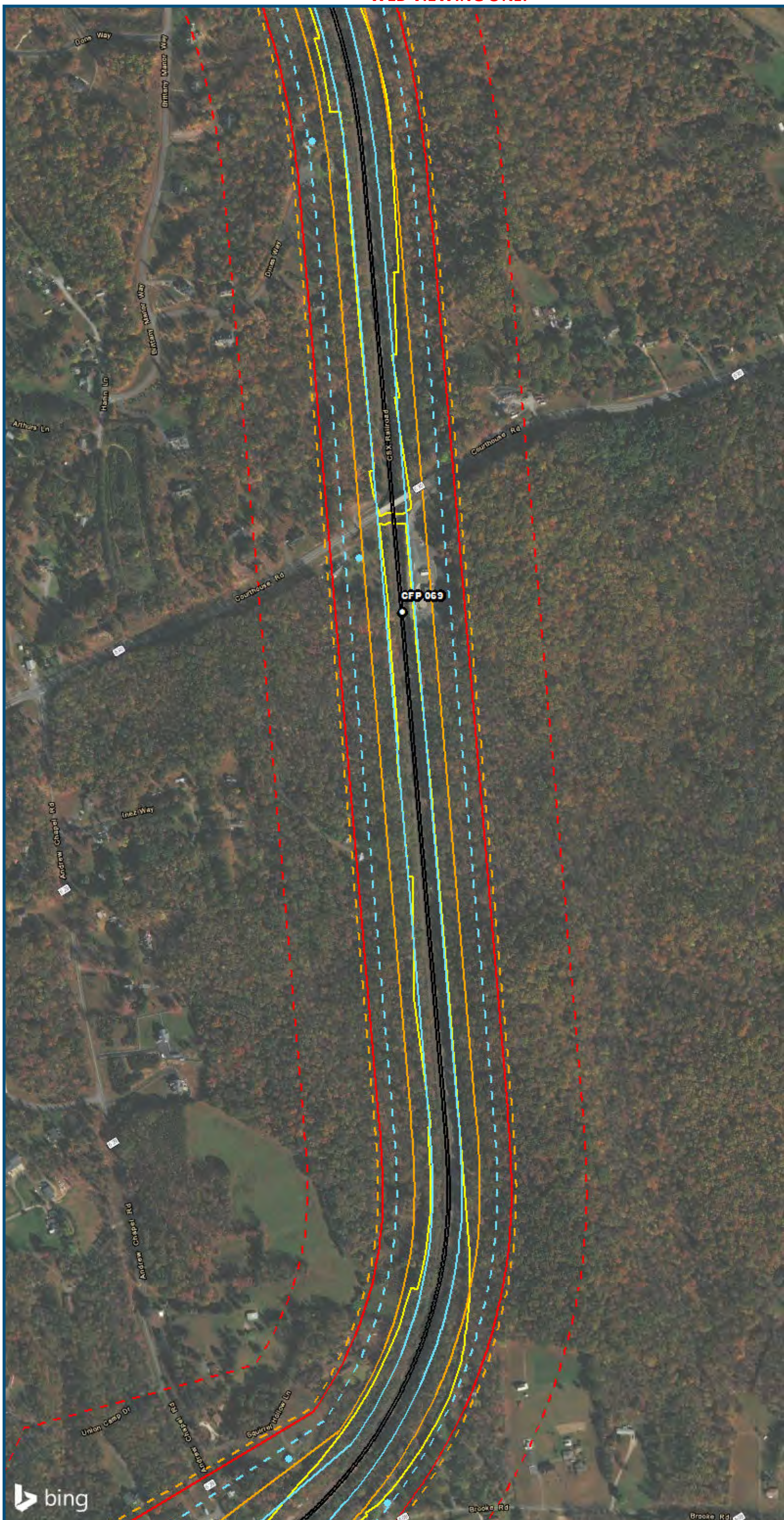
Legend

- Category 1 Moderate Noise Impact Contour
- Category 1 Severe Noise Impact Contour
- Category 1 Moderate Noise Impacts
- Category 1 Severe Noise Impacts
- Category 2 Moderate Noise Impact Contour
- Category 2 Severe Noise Impact Contour
- Category 2 Moderate Noise Impacts
- Category 2 Severe Noise Impacts
- Category 3 Moderate Noise Impact Contour
- Category 3 Severe Noise Impact Contour
- Category 3 Moderate Noise Impacts
- Category 3 Severe Noise Impacts
- CSXT Mileposts
- Track - Existing
- Stations
- Proposed Stations
- CSXT ROW (County Parcel Data)
- City/County Boundary

**Appendix B
 Noise Analysis
 Area 2:
 Northern Virginia**



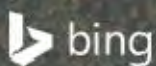
\\dcis-main\gis_data\GIS\Projects\0115-46_VA_Dep\Rail-Public\T transportation\0239056_RAPS-4\IT Dev-Con\cap\Eng\map_docs\mxd\01EIS\Tech_Reports\Noise and Vibration\Web_Versions\NoiseVib_Area2_Mapbook_11x17_WEB.mxd | Last Updated: 08/15/2017



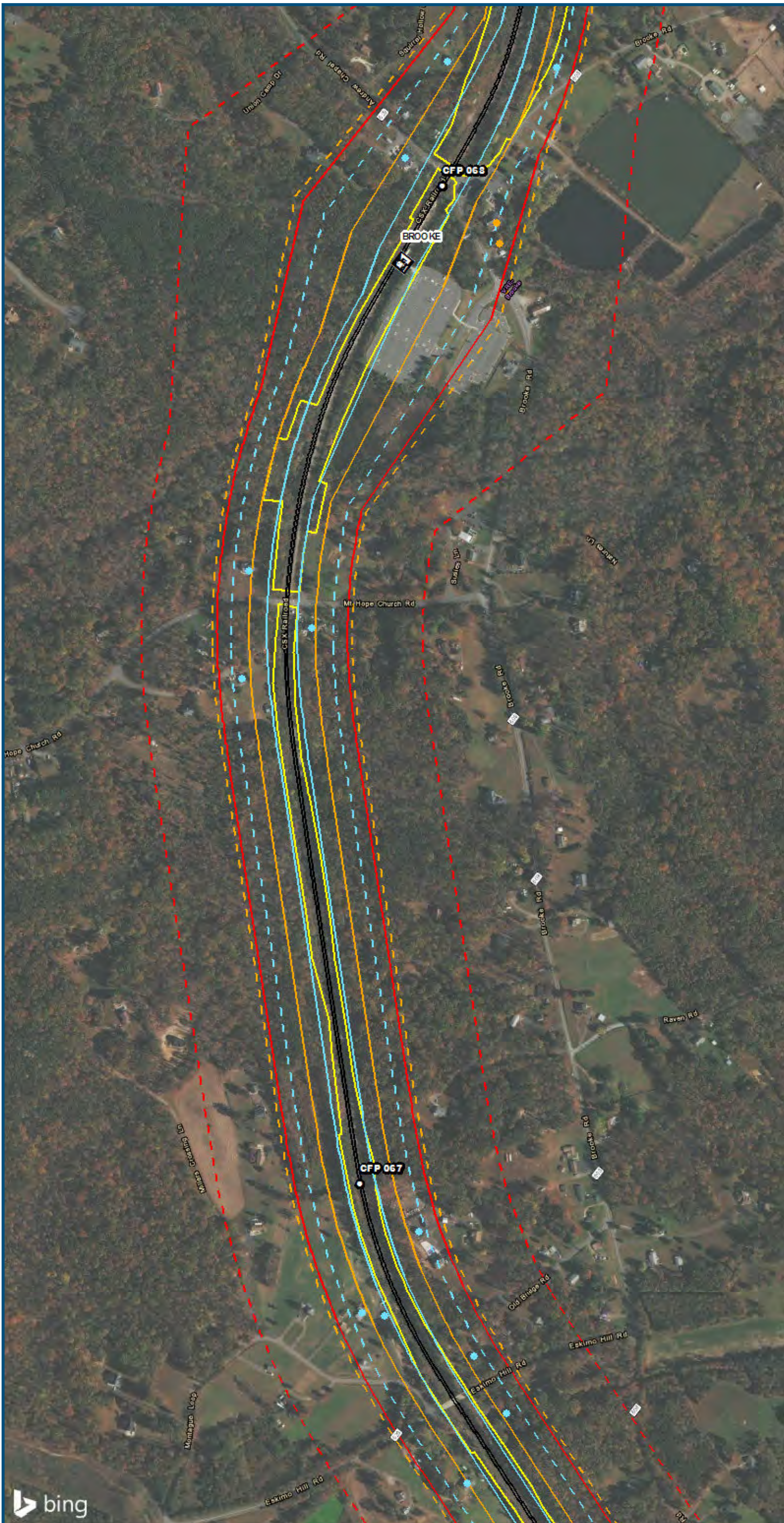
0 250 500
 Feet
 1 inch = 500 feet
 @ 11 x 17 inches
 Projection: Lambert Conformal Conic
 State Plane Virginia North FIPS 4501 Feet
 North American Datum of 1983
 Imagery/Basemap Source: 2015 Bing
 Aerial Imagery; ESRI World Transportation

- Legend**
- Category 1 Moderate Noise Impact Contour
 - Category 1 Severe Noise Impact Contour
 - Category 1 Moderate Noise Impacts
 - Category 1 Severe Noise Impacts
 - Category 2 Moderate Noise Impact Contour
 - Category 2 Severe Noise Impact Contour
 - Category 2 Moderate Noise Impacts
 - Category 2 Severe Noise Impacts
 - Category 3 Moderate Noise Impact Contour
 - Category 3 Severe Noise Impact Contour
 - Category 3 Moderate Noise Impacts
 - Category 3 Severe Noise Impacts
 - CSXT Mileposts
 - Track - Existing
 - Stations
 - Proposed Stations
 - CSXT ROW (County Parcel Data)
 - City/County Boundary

**Appendix B
 Noise Analysis
 Area 2:
 Northern Virginia**



\\dcis-main\gis_data\GIS\Projects\0115-45_VA_Dep\Rail-Public\T transportation\0239056_RAPS-4AltDev-Concept\Eng\map_docs\mxd\01EIS\Tech_Reports\Noise and Vibration\Map_Versions\NoiseVib_Area2_Mapbook_11x17_WEB.mxd | Last Updated: 08/15/2017



0 250 500
 Feet
 1 inch = 500 feet
 @ 11 x 17 inches
 Projection: Lambert Conformal Conic
 State Plane Virginia North FIPS 4501 Feet
 North American Datum of 1983
 Imagery/Basemap Source: 2015 Bing
 Aerial Imagery; ESRI World Transportation

- Legend**
- - - Category 1 Moderate Noise Impact Contour
 - Category 1 Severe Noise Impact Contour
 - Category 1 Moderate Noise Impacts
 - Category 1 Severe Noise Impacts
 - - - Category 2 Moderate Noise Impact Contour
 - Category 2 Severe Noise Impact Contour
 - Category 2 Moderate Noise Impacts
 - Category 2 Severe Noise Impacts
 - - - Category 3 Moderate Noise Impact Contour
 - Category 3 Severe Noise Impact Contour
 - Category 3 Moderate Noise Impacts
 - Category 3 Severe Noise Impacts
 - CSXT Mileposts
 - Track - Existing
 - Stations
 - Proposed Stations
 - CSXT ROW (County Parcel Data)
 - City/County Boundary

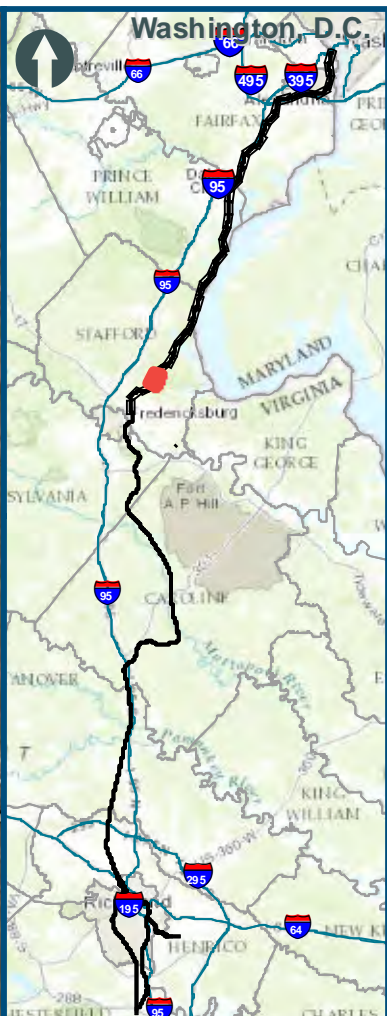
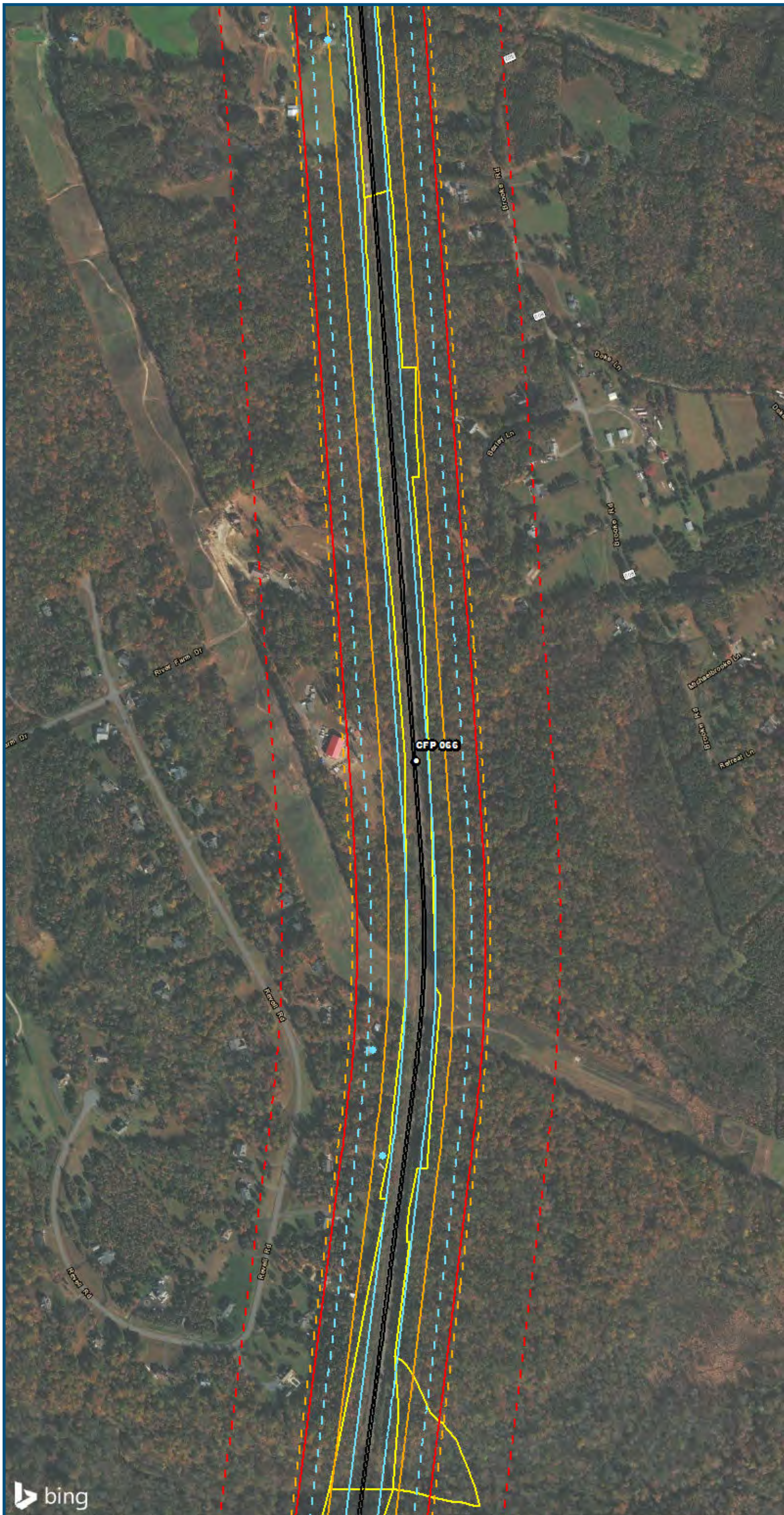
**Appendix B
 Noise Analysis
 Area 2:
 Northern Virginia**

\\dcis-main\gis_data\GIS\Projects\0115-46_VA\Depot\Rail-Public\Transportation\0239056_RAPS-4\ITDev-Concept\Eng\map_docs\mxd\01EIS\Tech_Reports\Noise and Vibration\Web_Versions\NoiseVib_Area2_Mapbook_11x17_WEB.mxd | Last Updated: 08/15/2017



www.DC2RVArail.com





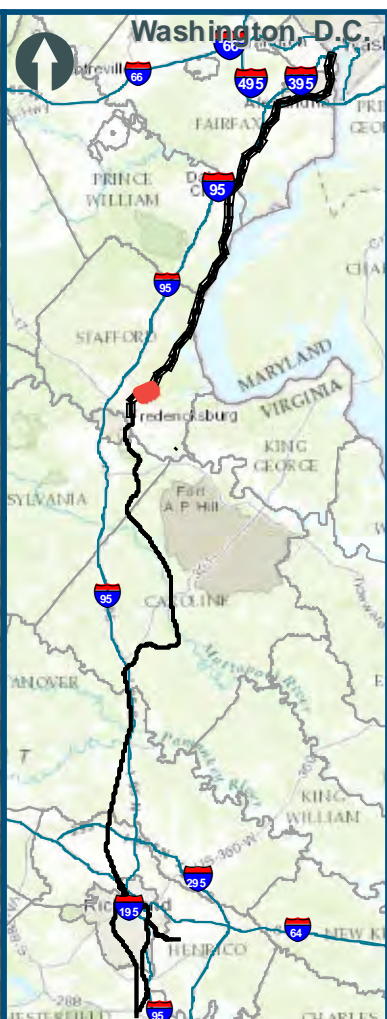
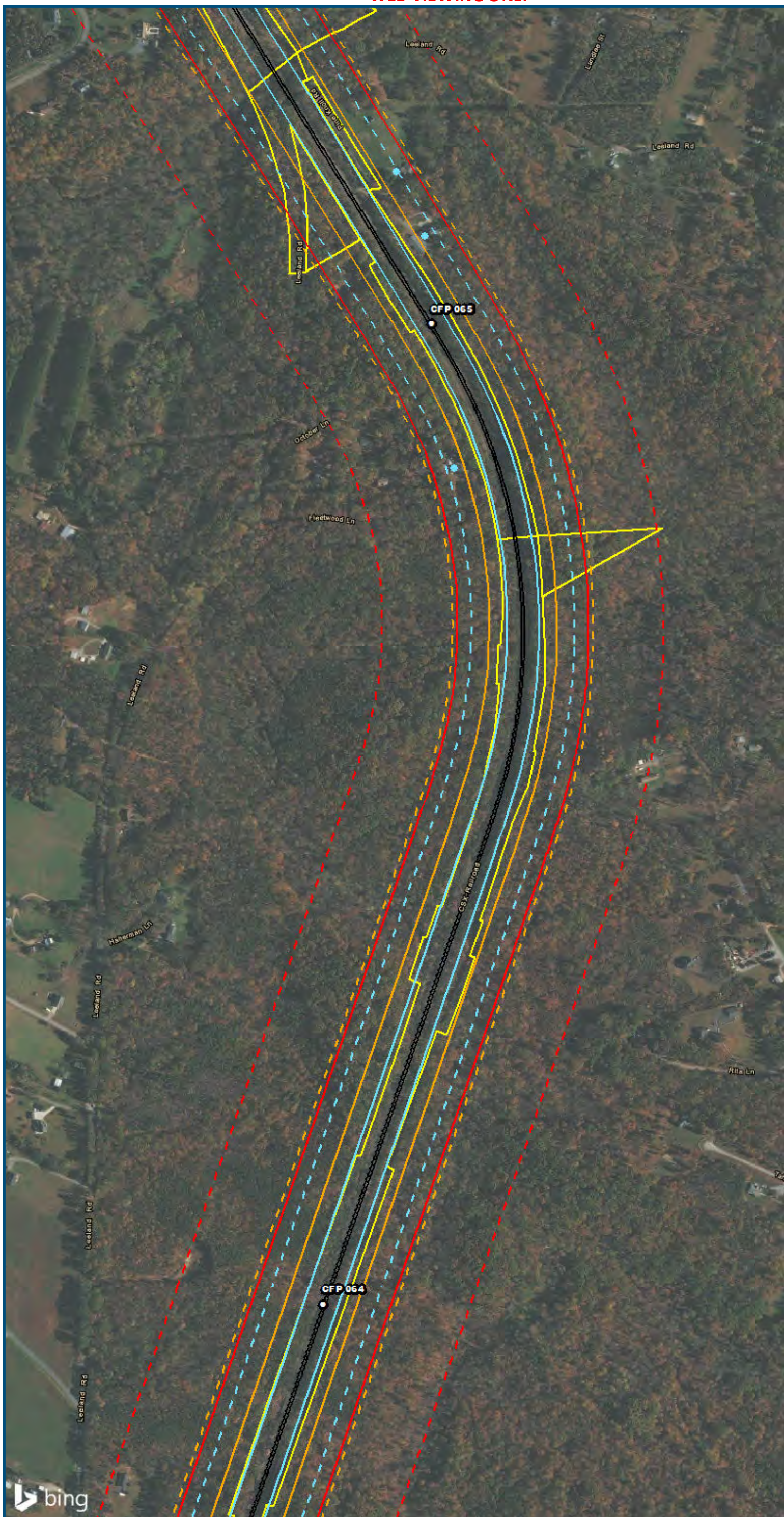
0 250 500
 Feet
 1 inch = 500 feet
 @ 11 x 17 inches
 Projection: Lambert Conformal Conic
 State Plane Virginia North FIPS 4501 Feet
 North American Datum of 1983
 Imagery/Basemap Source: 2015 Bing
 Aerial Imagery; ESRI World Transportation

- Legend**
- Category 1 Moderate Noise Impact Contour
 - Category 1 Severe Noise Impact Contour
 - Category 1 Moderate Noise Impacts
 - Category 1 Severe Noise Impacts
 - Category 2 Moderate Noise Impact Contour
 - Category 2 Severe Noise Impact Contour
 - Category 2 Moderate Noise Impacts
 - Category 2 Severe Noise Impacts
 - Category 3 Moderate Noise Impact Contour
 - Category 3 Severe Noise Impact Contour
 - Category 3 Moderate Noise Impacts
 - Category 3 Severe Noise Impacts
 - CSXT Mileposts
 - Track - Existing
 - Stations
 - Proposed Stations
 - CSXT ROW (County Parcel Data)
 - City/County Boundary

**Appendix B
 Noise Analysis
 Area 2:
 Northern Virginia**



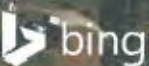
\\cds\main\gis_data\GIS\Projects\0115-46_VA Dept of Rail\Public Transportation\0230756_RAPS-4\IT Dev-Concept\Eng\map_docs\mxd\01EIS\Tech_Reports\Noise and Vibration\Map_Area2_Mapbook_11x17_WEB.mxd | Last Updated: 08/15/2017



0 250 500
 Feet
 1 inch = 500 feet
 @ 11 x 17 inches
 Projection: Lambert Conformal Conic
 State Plane Virginia North FIPS 4501 Feet
 North American Datum of 1983
 Imagery/Basemap Source: 2015 Bing
 Aerial Imagery; ESRI World Transportation

- Legend**
- - - Category 1 Moderate Noise Impact Contour
 - Category 1 Severe Noise Impact Contour
 - Category 1 Moderate Noise Impacts
 - Category 1 Severe Noise Impacts
 - - - Category 2 Moderate Noise Impact Contour
 - Category 2 Severe Noise Impact Contour
 - Category 2 Moderate Noise Impacts
 - Category 2 Severe Noise Impacts
 - - - Category 3 Moderate Noise Impact Contour
 - Category 3 Severe Noise Impact Contour
 - Category 3 Moderate Noise Impacts
 - Category 3 Severe Noise Impacts
 - CSXT Mileposts
 - Track - Existing
 - Stations
 - Proposed Stations
 - CSXT ROW (County Parcel Data)
 - City/County Boundary

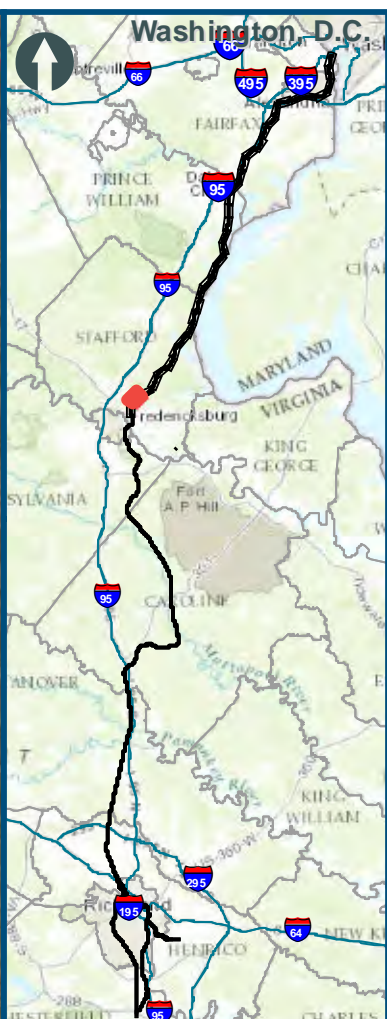
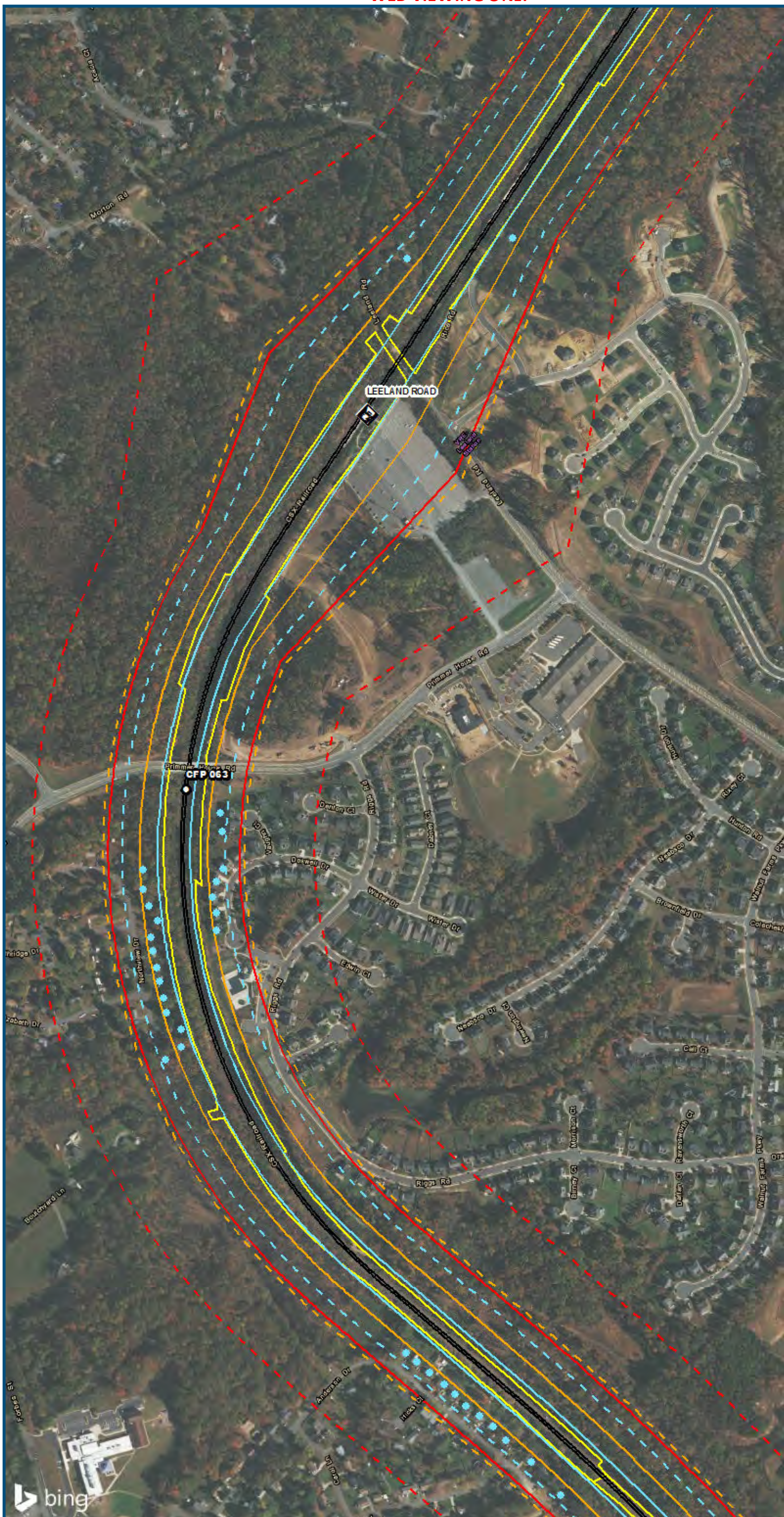
**Appendix B
 Noise Analysis
 Area 2:
 Northern Virginia**



www.DC2RVArail.com



\\dcis-main\gis_data\GIS\Projects\0115-46_VA_Depot\Rail-Pub\fcT\transportation\0239056_RAPS-4\ITDev-Concept\Eng\map_docs\mxd\01EIS\Tech_Reports\Noise\NoiseVib_Area2_Mapbook_11x17_WEB.mxd | Last Updated: 08:15:2017

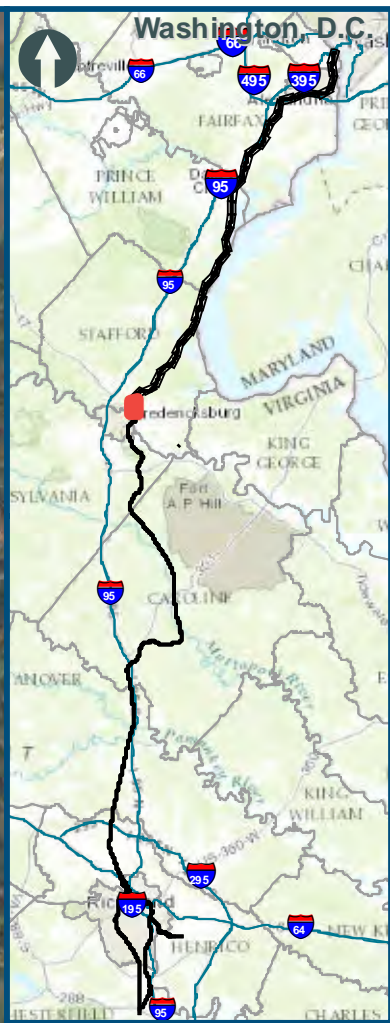


0 250 500
 Feet
 1 inch = 500 feet
 @ 11 x 17 inches
 Projection: Lambert Conformal Conic
 State Plane Virginia North FIPS 4501 Feet
 North American Datum of 1983
 Imagery/Basemap Source: 2015 Bing
 Aerial Imagery; ESRI World Transportation

- Legend**
- Category 1 Moderate Noise Impact Contour
 - Category 1 Severe Noise Impact Contour
 - Category 1 Moderate Noise Impacts
 - Category 1 Severe Noise Impacts
 - Category 2 Moderate Noise Impact Contour
 - Category 2 Severe Noise Impact Contour
 - Category 2 Moderate Noise Impacts
 - Category 2 Severe Noise Impacts
 - Category 3 Moderate Noise Impact Contour
 - Category 3 Severe Noise Impact Contour
 - Category 3 Moderate Noise Impacts
 - Category 3 Severe Noise Impacts
 - CSXT Mileposts
 - Track - Existing
 - Stations
 - Proposed Stations
 - CSXT ROW (County Parcel Data)
 - City/County Boundary

**Appendix B
 Noise Analysis
 Area 2:
 Northern Virginia**

\\dcis-main\gis_data\GIS\Projects\0115-46_VA_Dep\to\Rail-Public\Tech_Reports\Noise\Noise and Vibration\Web_Versions\NoiseVib_Area2_Mapbook_11x17_WEB.mxd | Last Updated: 08/15/2017



0 250 500
 Feet
 1 inch = 500 feet
 @ 11 x 17 inches
 Projection: Lambert Conformal Conic
 State Plane Virginia North FIPS 4501 Feet
 North American Datum of 1983
 Imagery/Basemap Source: 2015 Bing
 Aerial Imagery; ESRI World Transportation

- Legend**
- Category 1 Moderate Noise Impact Contour
 - Category 1 Severe Noise Impact Contour
 - Category 1 Moderate Noise Impacts
 - Category 1 Severe Noise Impacts
 - Category 2 Moderate Noise Impact Contour
 - Category 2 Severe Noise Impact Contour
 - Category 2 Moderate Noise Impacts
 - Category 2 Severe Noise Impacts
 - Category 3 Moderate Noise Impact Contour
 - Category 3 Severe Noise Impact Contour
 - Category 3 Moderate Noise Impacts
 - Category 3 Severe Noise Impacts
 - CSXT Mileposts
 - Track - Existing
 - Stations
 - Proposed Stations
 - CSXT ROW (County Parcel Data)
 - City/County Boundary

**Appendix B
 Noise Analysis
 Area 2:
 Northern Virginia**

