

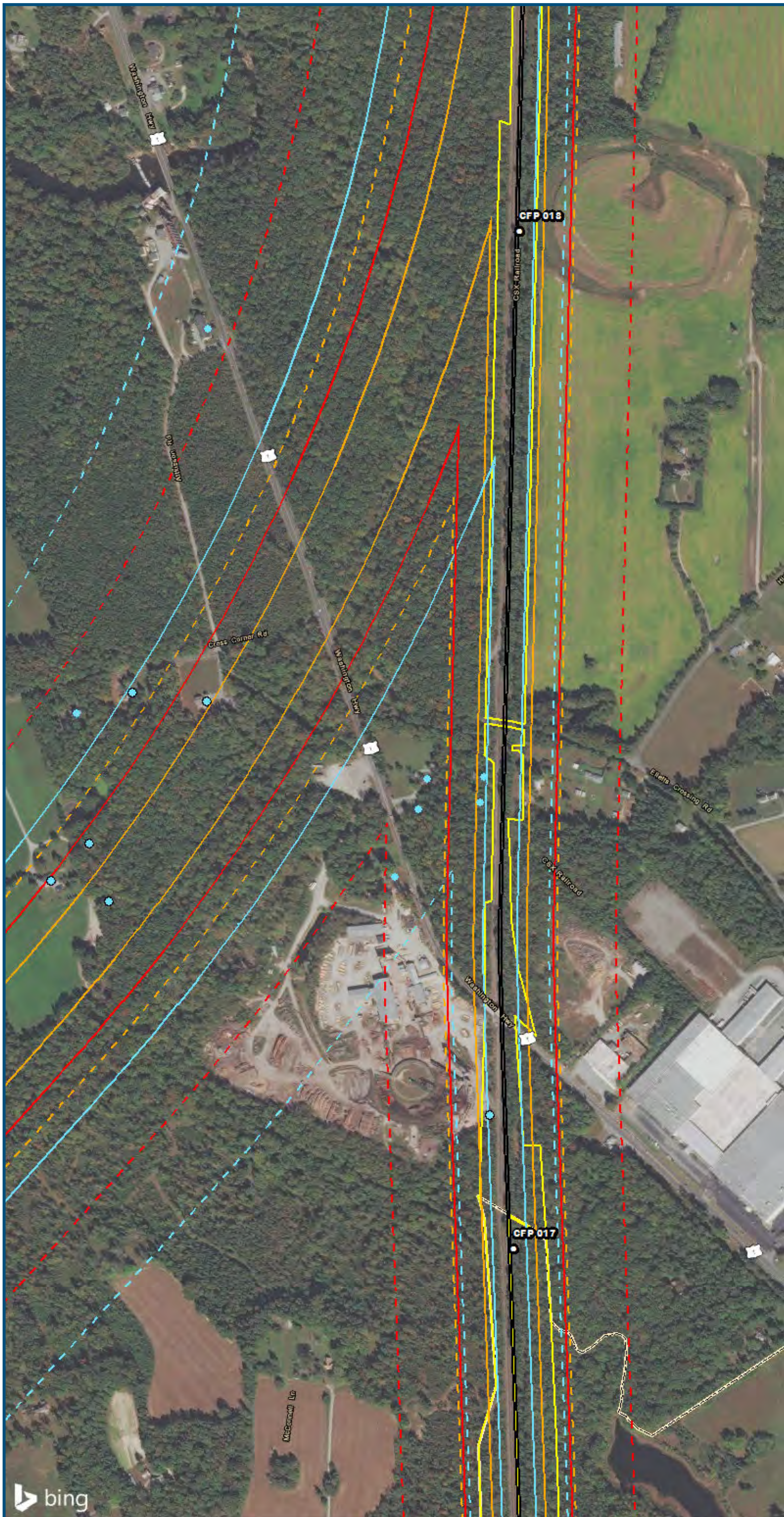
0 250 500
 Feet
 1 inch = 500 feet
 @ 11 x 17 inches
 Projection: Lambert Conformal Conic
 State Plane Virginia North FIPS 4501 Feet
 North American Datum of 1983
 Imagery/Basemap Source: 2015 Bing
 Aerial Imagery; ESRI World Transportation

Legend

- Category 1 Moderate Noise Impact Contour
- Category 1 Severe Noise Impact Contour
- Category 1 Moderate Noise Impacts
- Category 1 Severe Noise Impacts
- Category 2 Moderate Noise Impact Contour
- Category 2 Severe Noise Impact Contour
- Category 2 Moderate Noise Impacts
- Category 2 Severe Noise Impacts
- Category 3 Moderate Noise Impact Contour
- Category 3 Severe Noise Impact Contour
- Category 3 Moderate Noise Impacts
- Category 3 Severe Noise Impacts
- CSXT Mileposts
- Track - Existing
- Stations
- Proposed Stations
- CSXT ROW (County Parcel Data)
- City/County Boundary

**Appendix G
 Noise Analysis
 Area 5C:
 Ashland**

\\cis-main\gis_data\GIS\Projects\0115-46_VA_Dep\toRail-Public\Transportation\0239056_RAPS-4AltDev-Concept\Eng\map_docs\mxd\01EIS\Tech_Reports\Noise and Vibration\Mapbook_11x17_WEB.mxd | Last Updated: 08.15.2017

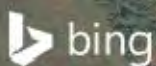


0 250 500
 Feet
 1 inch = 500 feet
 @ 11 x 17 inches
 Projection: Lambert Conformal Conic
 State Plane Virginia North FIPS 4501 Feet
 North American Datum of 1983
 Imagery/Basemap Source: 2015 Bing
 Aerial Imagery; ESRI World Transportation

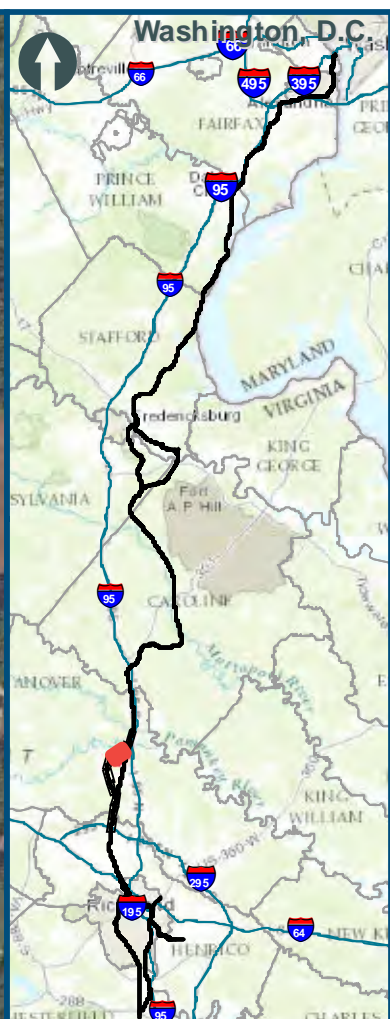
Legend

- Category 1 Moderate Noise Impact Contour
- Category 1 Severe Noise Impact Contour
- Category 1 Moderate Noise Impacts
- Category 1 Severe Noise Impacts
- Category 2 Moderate Noise Impact Contour
- Category 2 Severe Noise Impact Contour
- Category 2 Moderate Noise Impacts
- Category 2 Severe Noise Impacts
- Category 3 Moderate Noise Impact Contour
- Category 3 Severe Noise Impact Contour
- Category 3 Moderate Noise Impacts
- Category 3 Severe Noise Impacts
- CSXT Mileposts
- Track - Existing
- Stations
- Proposed Stations
- CSXT ROW (County Parcel Data)
- City/County Boundary

**Appendix G
 Noise Analysis
 Area 5C:
 Ashland**



\\dcis-main\gis_data\GIS\Projects\0115-46_VA_Dep\Rail\Public\T\Transportation\0239056_RAPS-4AltDev-Concep\Eng\map_docs\mxd\01EIS\Tech_Reports\Noise\Noise and Vibration\Web_Versions\NoiseVib_Area5C_Mapbook_11x17_WEB.mxd | Last Updated: 08.15.2017



0 250 500
 Feet
 1 inch = 500 feet
 @ 11 x 17 inches
 Projection: Lambert Conformal Conic
 State Plane Virginia North FIPS 4501 Feet
 North American Datum of 1983
 Imagery/Basemap Source: 2015 Bing
 Aerial Imagery; ESRI World Transportation

- Legend**
- Category 1 Moderate Noise Impact Contour
 - Category 1 Severe Noise Impact Contour
 - Category 1 Moderate Noise Impacts
 - Category 1 Severe Noise Impacts
 - Category 2 Moderate Noise Impact Contour
 - Category 2 Severe Noise Impact Contour
 - Category 2 Moderate Noise Impacts
 - Category 2 Severe Noise Impacts
 - Category 3 Moderate Noise Impact Contour
 - Category 3 Severe Noise Impact Contour
 - Category 3 Moderate Noise Impacts
 - Category 3 Severe Noise Impacts
 - CSXT Mileposts
 - Track - Existing
 - Stations
 - Proposed Stations
 - CSXT ROW (County Parcel Data)
 - City/County Boundary

**Appendix G
 Noise Analysis
 Area 5C:
 Ashland**

\\cis-main\gis_data\GIS\Projects\0115-46_VA_Dep\toRail-Public\Transportation\02309056_RAPS-4\AltDev-Concept\Eng\map_docs\mxd\01EIS\Tech_Reports\Noise and Vibration\Web_Versions\NoiseVib_Area5C_Mapbook_11x17_WEB.mxd | Last Updated: 08.15.2017



www.DC2RVArail.com



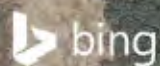


0 250 500
 Feet
 1 inch = 500 feet
 @ 11 x 17 inches
 Projection: Lambert Conformal Conic
 State Plane Virginia North FIPS 4501 Feet
 North American Datum of 1983
 Imagery/Basemap Source: 2015 Bing
 Aerial Imagery; ESRI World Transportation

Legend

- Category 1 Moderate Noise Impact Contour
- Category 1 Severe Noise Impact Contour
- Category 1 Moderate Noise Impacts
- Category 1 Severe Noise Impacts
- Category 2 Moderate Noise Impact Contour
- Category 2 Severe Noise Impact Contour
- Category 2 Moderate Noise Impacts
- Category 2 Severe Noise Impacts
- Category 3 Moderate Noise Impact Contour
- Category 3 Severe Noise Impact Contour
- Category 3 Moderate Noise Impacts
- Category 3 Severe Noise Impacts
- CSXT Mileposts
- Track - Existing
- Stations
- Proposed Stations
- CSXT ROW (County Parcel Data)
- City/County Boundary

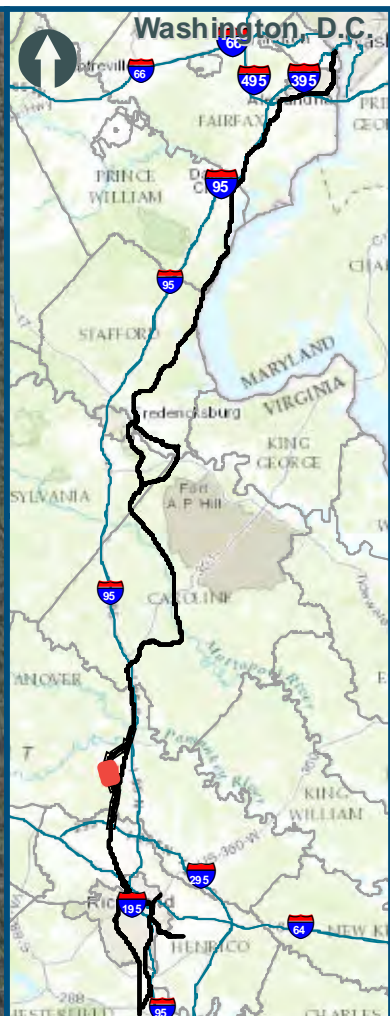
**Appendix G
 Noise Analysis
 Area 5C:
 Ashland**



www.DC2RVArail.com



\\dcis-main\gis_data\GIS\Projects\0115-46_VA_Dep_of_Rails-Public_Transportation\0239056_RAPS-4\ITDev-Concept\Eng\map_docs\mxd\02\GIS\Tech_Reports\Noise\Map\Area5C_Mapbook_11x17_WEB.mxd | Last Updated: 08.15.2017

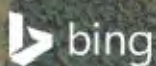


0 250 500
 Feet
 1 inch = 500 feet
 @ 11 x 17 inches
 Projection: Lambert Conformal Conic
 State Plane Virginia North FIPS 4501 Feet
 North American Datum of 1983
 Imagery/Basemap Source: 2015 Bing
 Aerial Imagery; ESRI World Transportation

Legend

- Category 1 Moderate Noise Impact Contour
- Category 1 Severe Noise Impact Contour
- Category 1 Moderate Noise Impacts
- Category 1 Severe Noise Impacts
- Category 2 Moderate Noise Impact Contour
- Category 2 Severe Noise Impact Contour
- Category 2 Moderate Noise Impacts
- Category 2 Severe Noise Impacts
- Category 3 Moderate Noise Impact Contour
- Category 3 Severe Noise Impact Contour
- Category 3 Moderate Noise Impacts
- Category 3 Severe Noise Impacts
- CSXT Mileposts
- Track - Existing
- Stations
- Proposed Stations
- CSXT ROW (County Parcel Data)
- City/County Boundary

**Appendix G
 Noise Analysis
 Area 5C:
 Ashland**

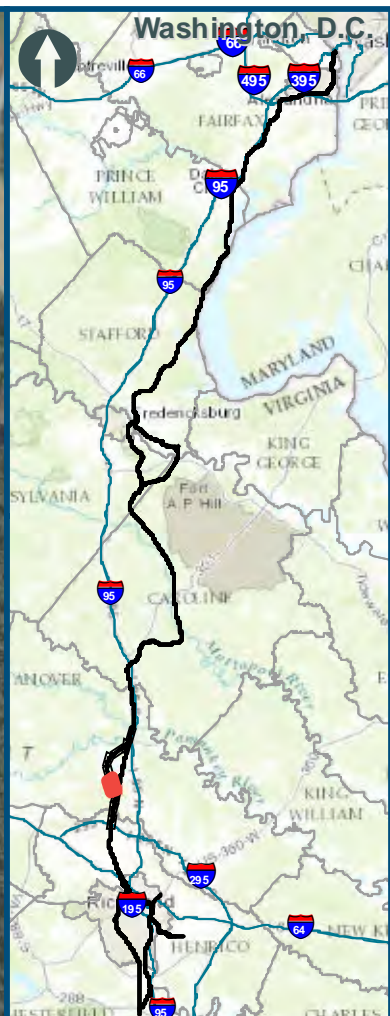
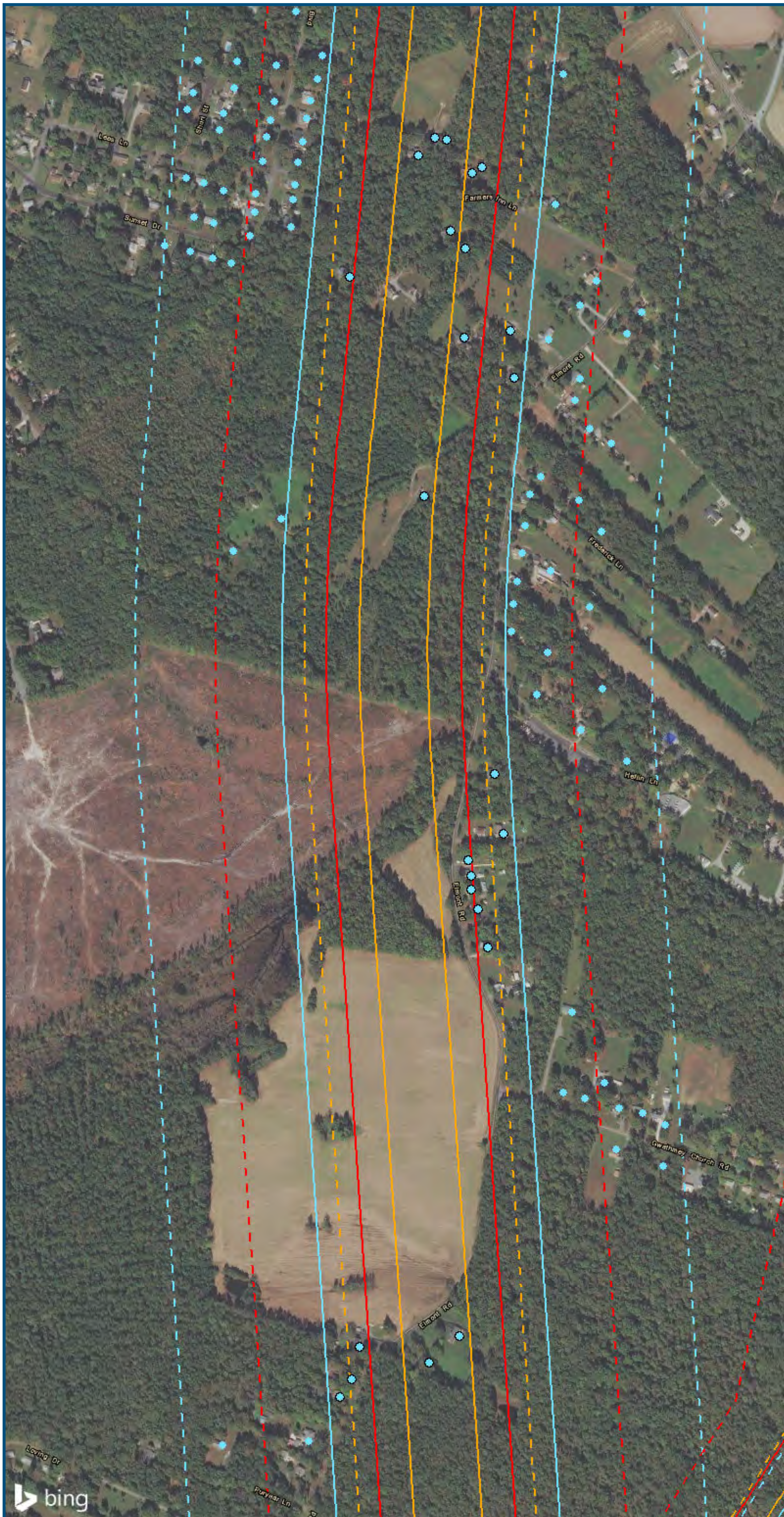


U.S. Department of Transportation
Federal Railroad Administration

www.DC2RVArail.com



\\dcis-main\gis_data\GIS\Projects\0115-46_VA Dept of Rail and Public Transportation\0239056_RAPS-4\IT Dev-Concept\Eng\map_docs\mxd\01EIS\Tech_Reports\Noise and Vibration\Map_Book_11x17_WEB.mxd | Last Updated: 08.15.2017

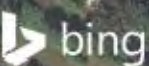


0 250 500
 Feet
 1 inch = 500 feet
 @ 11 x 17 inches
 Projection: Lambert Conformal Conic
 State Plane Virginia North FIPS 4501 Feet
 North American Datum of 1983
 Imagery/Basemap Source: 2015 Bing
 Aerial Imagery; ESRI World Transportation

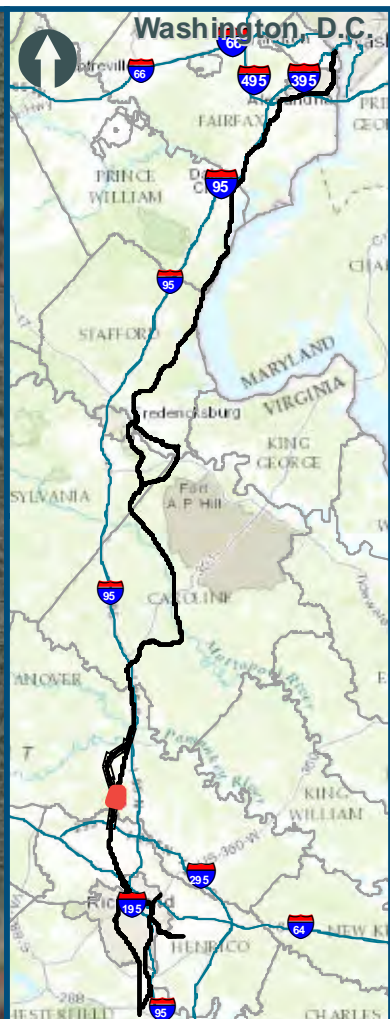
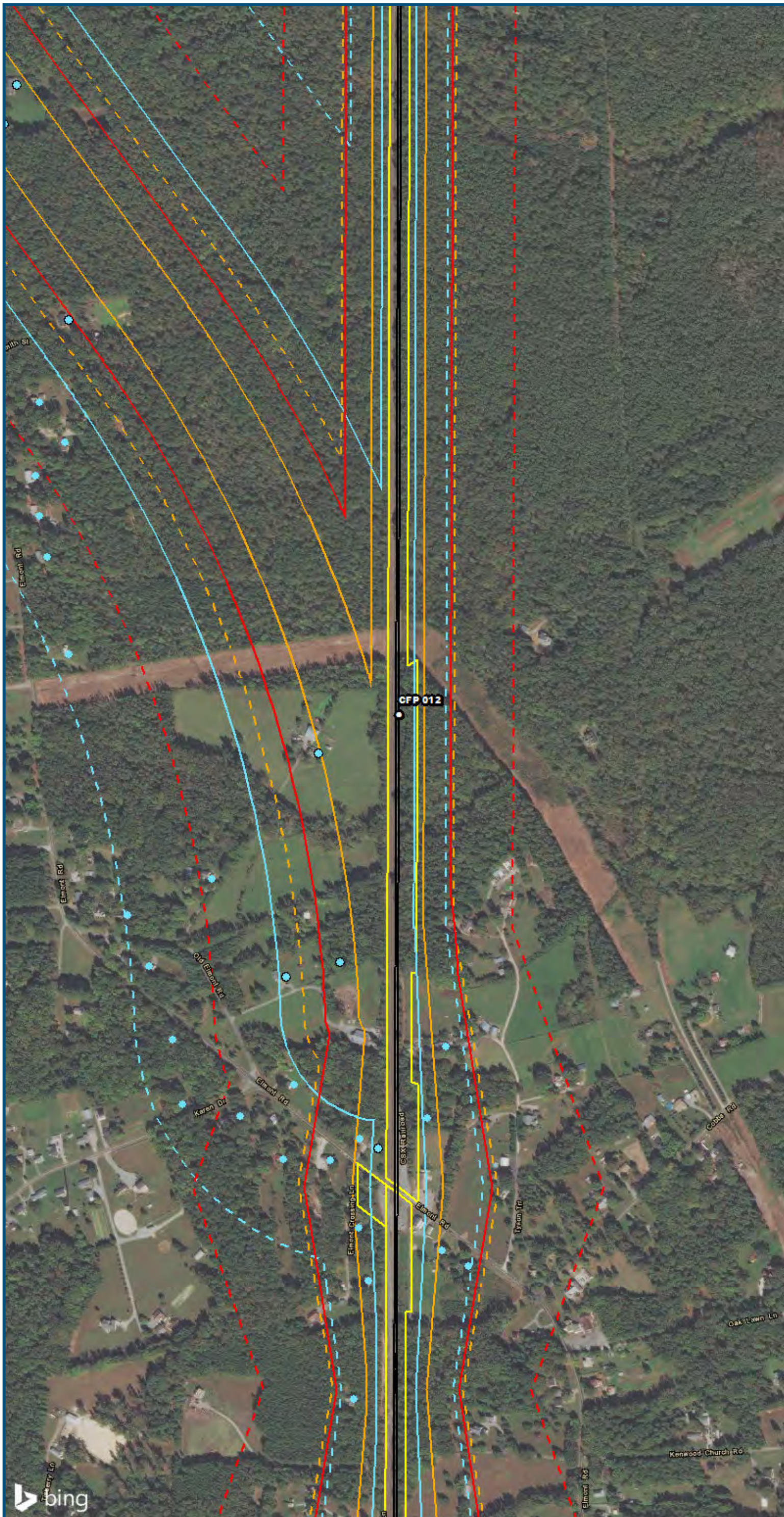
Legend

- Category 1 Moderate Noise Impact Contour
- Category 1 Severe Noise Impact Contour
- Category 1 Moderate Noise Impacts
- Category 1 Severe Noise Impacts
- Category 2 Moderate Noise Impact Contour
- Category 2 Severe Noise Impact Contour
- Category 2 Moderate Noise Impacts
- Category 2 Severe Noise Impacts
- Category 3 Moderate Noise Impact Contour
- Category 3 Severe Noise Impact Contour
- Category 3 Moderate Noise Impacts
- Category 3 Severe Noise Impacts
- CSXT Mileposts
- Track - Existing
- Stations
- Proposed Stations
- CSXT ROW (County Parcel Data)
- City/County Boundary

**Appendix G
 Noise Analysis
 Area 5C:
 Ashland**



\\dcis-main\gis_data\GIS\Projects\0115-46_VA_Dep\Rail\Public\Transportation\0239056_RAPS-4\ITDev-Concept\Eng\map_docs\mxd\01EIS\Tech_Reports\Noise and Vibration\Web_Versions\NoiseVib_Area5C_Mapbook_11x17_WEB.mxd | Last Updated: 08.15.2017



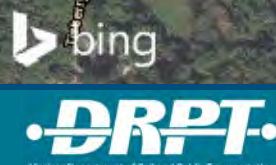
0 250 500
 Feet
 1 inch = 500 feet
 @ 11 x 17 inches
 Projection: Lambert Conformal Conic
 State Plane Virginia North FIPS 4501 Feet
 North American Datum of 1983
 Imagery/Basemap Source: 2015 Bing
 Aerial Imagery; ESRI World Transportation

Legend

- Category 1 Moderate Noise Impact Contour
- Category 1 Severe Noise Impact Contour
- Category 1 Moderate Noise Impacts
- Category 1 Severe Noise Impacts
- Category 2 Moderate Noise Impact Contour
- Category 2 Severe Noise Impact Contour
- Category 2 Moderate Noise Impacts
- Category 2 Severe Noise Impacts
- Category 3 Moderate Noise Impact Contour
- Category 3 Severe Noise Impact Contour
- Category 3 Moderate Noise Impacts
- Category 3 Severe Noise Impacts
- CSXT Mileposts
- Track - Existing
- Stations
- Proposed Stations
- CSXT ROW (County Parcel Data)
- City/County Boundary

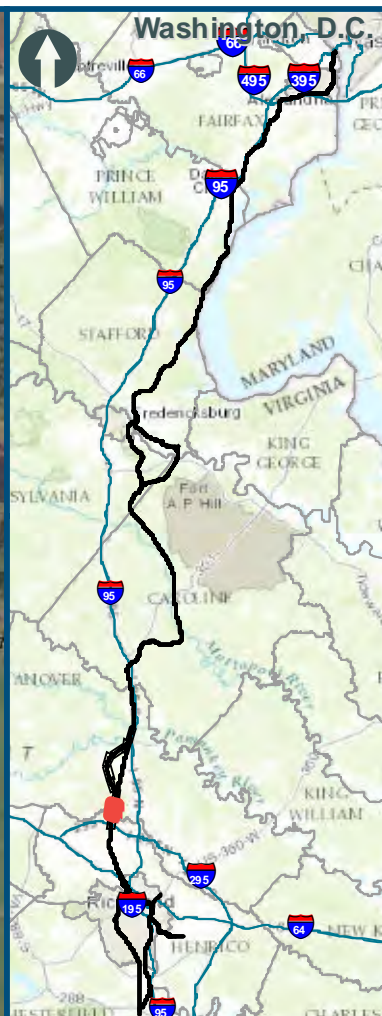
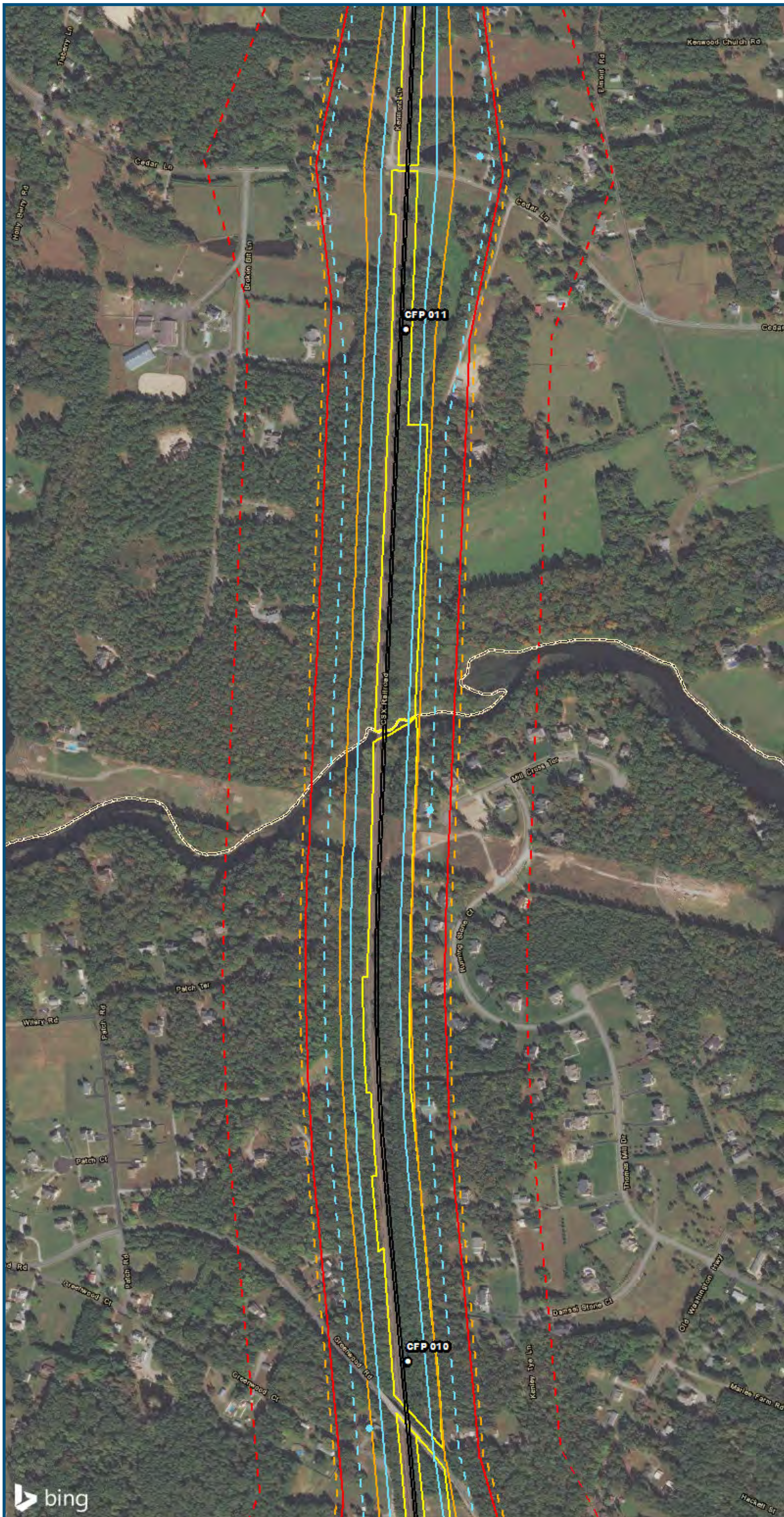
**Appendix G
 Noise Analysis
 Area 5C:
 Ashland**

\\dcis-main\gis_data\GIS\Projects\0115-46_VA_DepotRail-PublicTransportation\0239056_RAPS-4AltDev-ConceptEngng\map_docs\mxd\01EIS\Tech_Reports\NoiseandVibration\Map_11x17_WEB.mxd | Last Updated: 08.15.2017



www.DC2RVArail.com





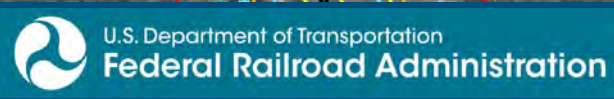
0 250 500
 Feet
 1 inch = 500 feet
 @ 11 x 17 inches
 Projection: Lambert Conformal Conic
 State Plane Virginia North FIPS 4501 Feet
 North American Datum of 1983
 Imagery/Basemap Source: 2015 Bing
 Aerial Imagery; ESRI World Transportation

Legend

- Category 1 Moderate Noise Impact Contour
- Category 1 Severe Noise Impact Contour
- Category 1 Moderate Noise Impacts
- Category 1 Severe Noise Impacts
- Category 2 Moderate Noise Impact Contour
- Category 2 Severe Noise Impact Contour
- Category 2 Moderate Noise Impacts
- Category 2 Severe Noise Impacts
- Category 3 Moderate Noise Impact Contour
- Category 3 Severe Noise Impact Contour
- Category 3 Moderate Noise Impacts
- Category 3 Severe Noise Impacts
- CSXT Mileposts
- Track - Existing
- Stations
- Proposed Stations
- CSXT ROW (County Parcel Data)
- City/County Boundary

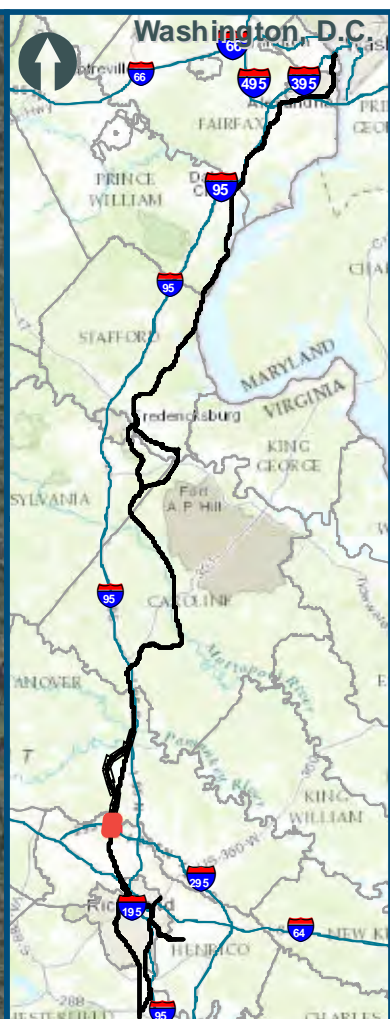
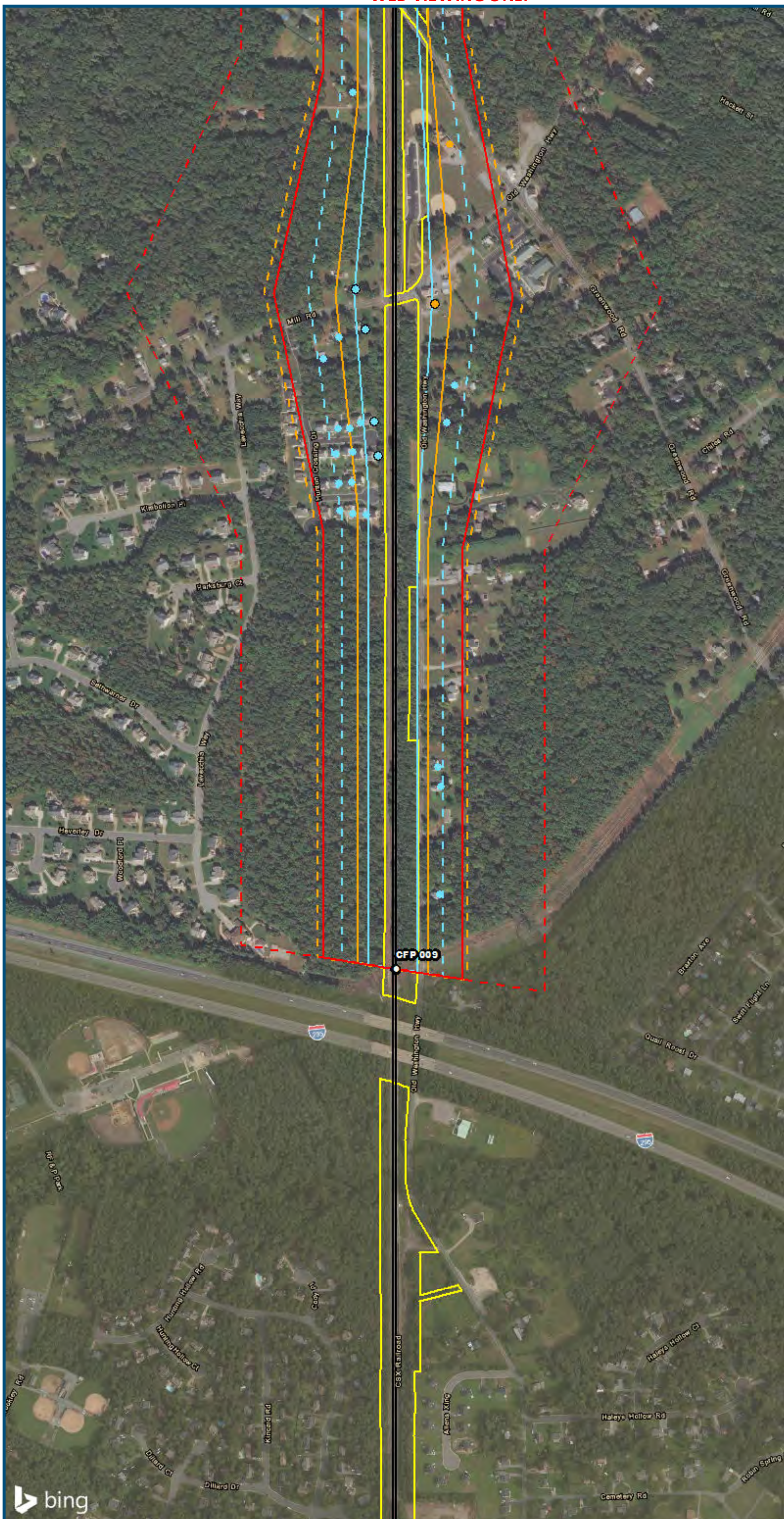
**Appendix G
 Noise Analysis
 Area 5C:
 Ashland**

\\dcis-main\gis_data\GIS\Projects\0115-46_VA_Depot\Rail-Public\Transportation\02305056_RAPS-4\ITDev-Concept\Eng\map_docs\mxd\01EIS\Tech_Reports\Noise\NoiseVib_Area5C_Mapbook_11x17_WEB.mxd | Last Updated: 08.15.2017



www.DC2RVArail.com





0 250 500
 Feet
 1 inch = 500 feet
 @ 11 x 17 inches
 Projection: Lambert Conformal Conic
 State Plane Virginia North FIPS 4501 Feet
 North American Datum of 1983
 Imagery/Basemap Source: 2015 Bing
 Aerial Imagery; ESRI World Transportation

Legend

- Category 1 Moderate Noise Impact Contour
- Category 1 Severe Noise Impact Contour
- Category 1 Moderate Noise Impacts
- Category 1 Severe Noise Impacts
- Category 2 Moderate Noise Impact Contour
- Category 2 Severe Noise Impact Contour
- Category 2 Moderate Noise Impacts
- Category 2 Severe Noise Impacts
- Category 3 Moderate Noise Impact Contour
- Category 3 Severe Noise Impact Contour
- Category 3 Moderate Noise Impacts
- Category 3 Severe Noise Impacts
- CSXT Mileposts
- Track - Existing
- Stations
- Proposed Stations
- CSXT ROW (County Parcel Data)
- City/County Boundary

**Appendix G
 Noise Analysis
 Area 5C:
 Ashland**



\\dcis-main\gis_data\GIS\Projects\0115-46_VA\Dep\Rail\Public\Transportation\0239056_RAPS-4\ITDev-Concept\Eng\map_docs\mxd\01EIS\Tech_Reports\Noise\Noise and Vibration\Map_Web_Versions\NoiseVib_Area5C_Mapbook_11x17_WEB.mxd | Last Updated: 08.15.2017