

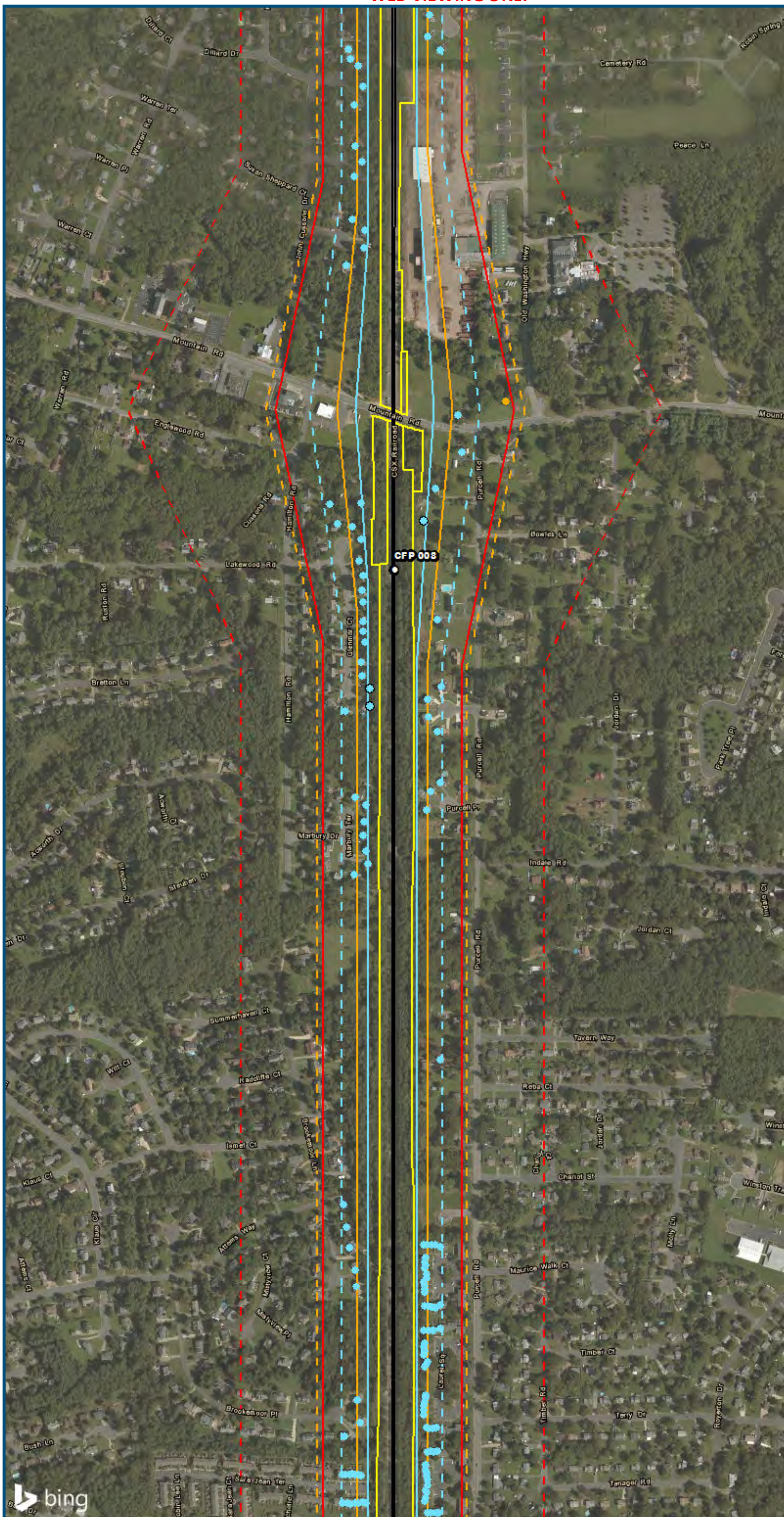
0 250 500
 Feet
 1 inch = 500 feet
 @ 11 x 17 inches
 Projection: Lambert Conformal Conic
 State Plane Virginia North FIPS 4501 Feet
 North American Datum of 1983
 Imagery/Basemap Source: 2015 Bing
 Aerial Imagery; ESRI World Transportation

- Legend**
- Category 1 Moderate Noise Impact Contour
 - Category 1 Severe Noise Impact Contour
 - Category 1 Moderate Noise Impacts
 - Category 1 Severe Noise Impacts
 - Category 2 Moderate Noise Impact Contour
 - Category 2 Severe Noise Impact Contour
 - Category 2 Moderate Noise Impacts
 - Category 2 Severe Noise Impacts
 - Category 3 Moderate Noise Impact Contour
 - Category 3 Severe Noise Impact Contour
 - Category 3 Moderate Noise Impacts
 - Category 3 Severe Noise Impacts
 - CSXT Mileposts
 - Track - Existing
 - Stations
 - Proposed Stations
 - CSXT ROW (County Parcel Data)
 - City/County Boundary

**Appendix H
 Noise Analysis
 Area 6A:
 Staples Mill
 Station Only**



\\dcis-main\gis_data\GIS\Projects\0115-46_VA_Depot\Rail-Public\Transportation\0239056_RAPS-4AltDev-Concept\Eng\map_docs\mxd\01EIS\Tech_Reports\Noise\NoiseVib_Area6A_Mapbook_11x17_WEB.mxd | Last Updated: 08.15.2017

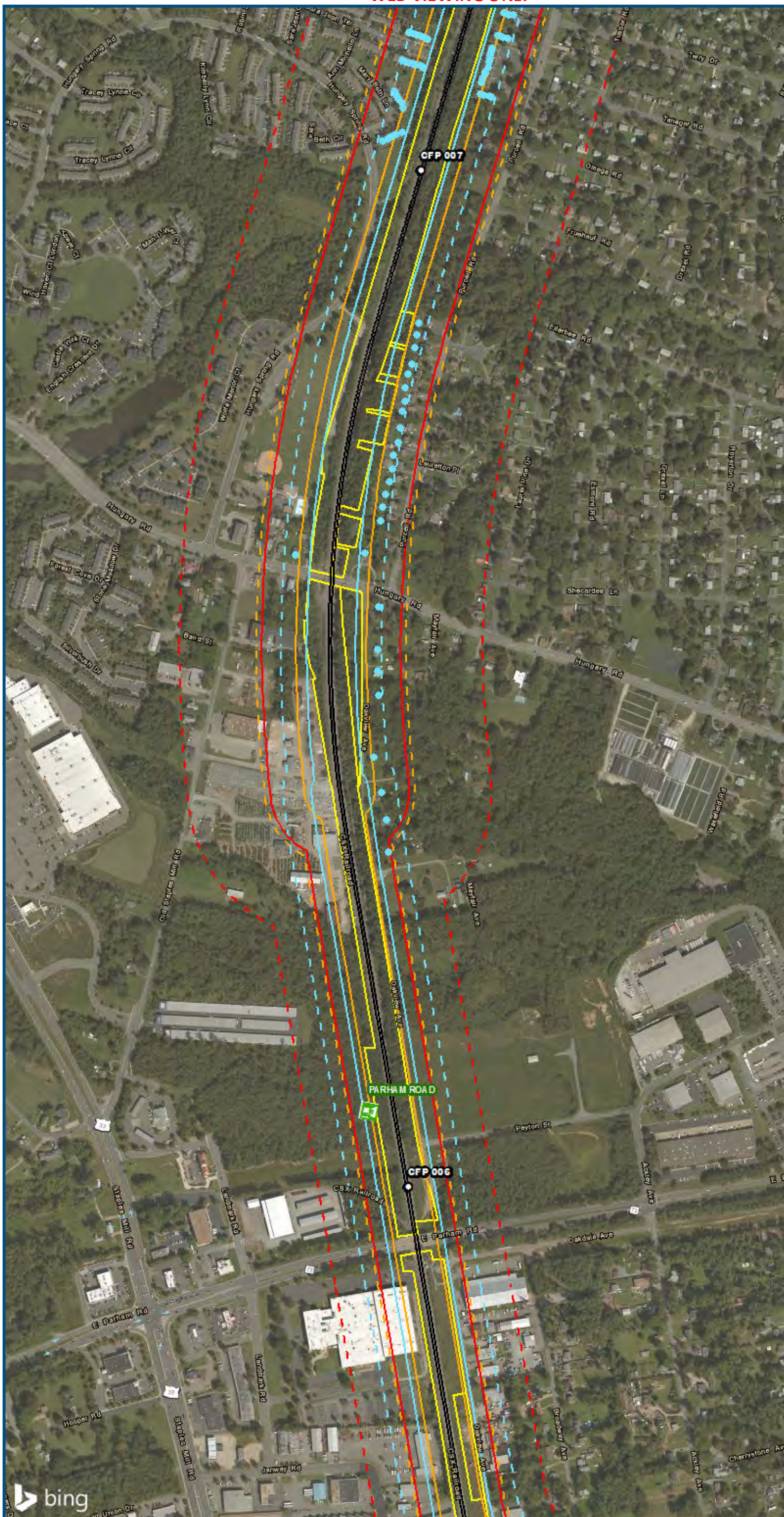


0 250 500
 Feet
 1 inch = 500 feet
 @ 11 x 17 inches
 Projection: Lambert Conformal Conic
 State Plane Virginia North FIPS 4501 Feet
 North American Datum of 1983
 Imagery/Basemap Source: 2015 Bing
 Aerial Imagery; ESRI World Transportation

Legend

- Category 1 Moderate Noise Impact Contour
- Category 1 Severe Noise Impact Contour
- Category 1 Moderate Noise Impacts
- Category 1 Severe Noise Impacts
- Category 2 Moderate Noise Impact Contour
- Category 2 Severe Noise Impact Contour
- Category 2 Moderate Noise Impacts
- Category 2 Severe Noise Impacts
- Category 3 Moderate Noise Impact Contour
- Category 3 Severe Noise Impact Contour
- Category 3 Moderate Noise Impacts
- Category 3 Severe Noise Impacts
- CSXT Mileposts
- Track - Existing
- Stations
- Proposed Stations
- CSXT ROW (County Parcel Data)
- City/County Boundary

**Appendix H
 Noise Analysis
 Area 6A:
 Staples Mill
 Station Only**



0 250 500
 Feet
 1 inch = 500 feet
 @ 11 x 17 inches
 Projection: Lambert Conformal Conic
 State Plane Virginia North FIPS 4501 Feet
 North American Datum of 1983
 Imagery/Basemap Source: 2015 Bing
 Aerial Imagery; ESRI World Transportation

Legend

- Category 1 Moderate Noise Impact Contour
- Category 1 Severe Noise Impact Contour
- Category 1 Moderate Noise Impacts
- Category 1 Severe Noise Impacts
- Category 2 Moderate Noise Impact Contour
- Category 2 Severe Noise Impact Contour
- Category 2 Moderate Noise Impacts
- Category 2 Severe Noise Impacts
- Category 3 Moderate Noise Impact Contour
- Category 3 Severe Noise Impact Contour
- Category 3 Moderate Noise Impacts
- Category 3 Severe Noise Impacts
- CSXT Mileposts
- Track - Existing
- Stations
- Proposed Stations
- CSXT ROW (County Parcel Data)
- City/County Boundary

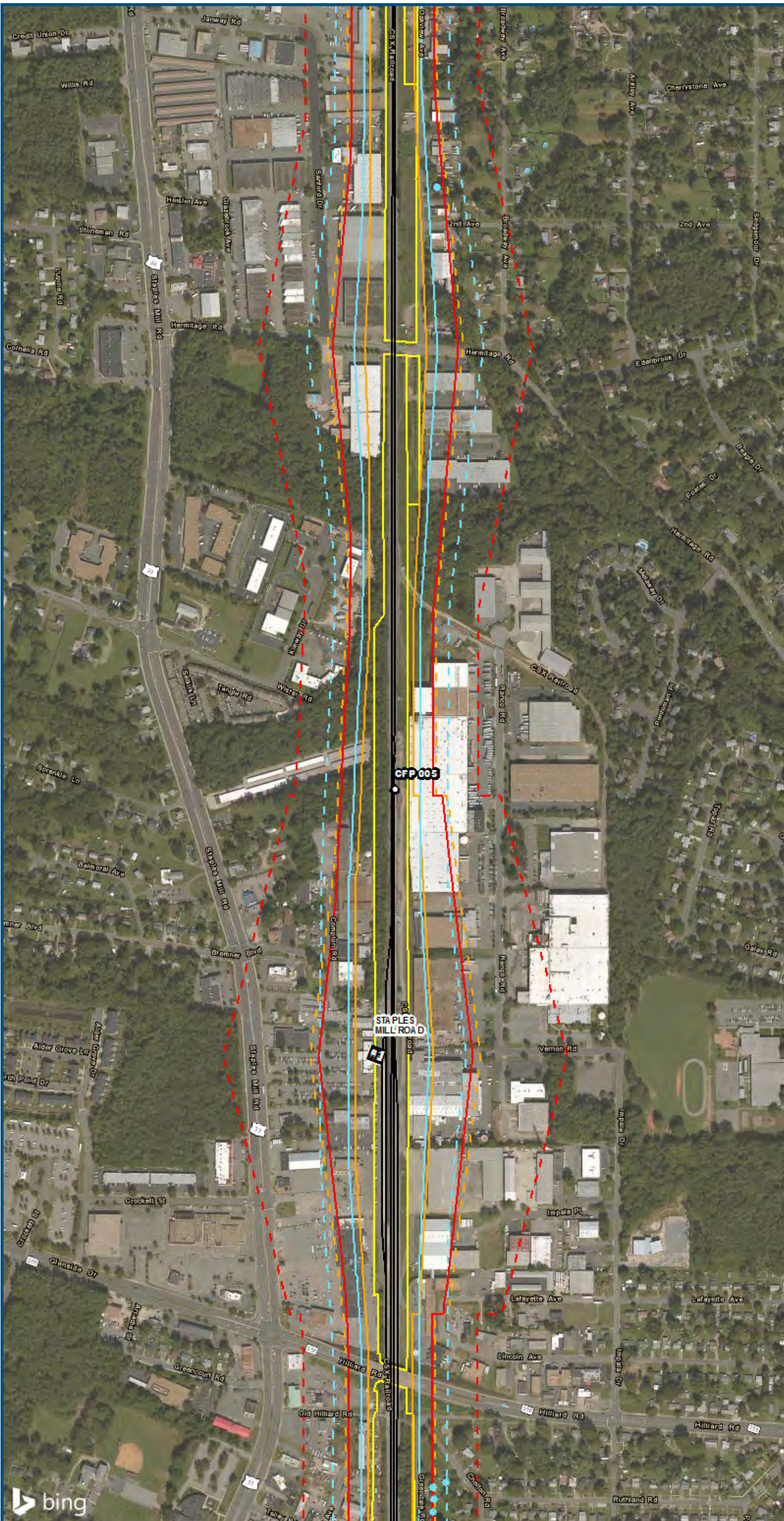
**Appendix H
 Noise Analysis
 Area 6A:
 Staples Mill
 Station Only**

\\dcis-main\gis_data\GIS\Projects\0115-45_VA_Depot\Rail-Public\Tech_Reports\Noise\Map\Area6A_Mapbook_11x17_WEB.mxd | Last Updated: 08.15.2017



www.DC2RVArail.com

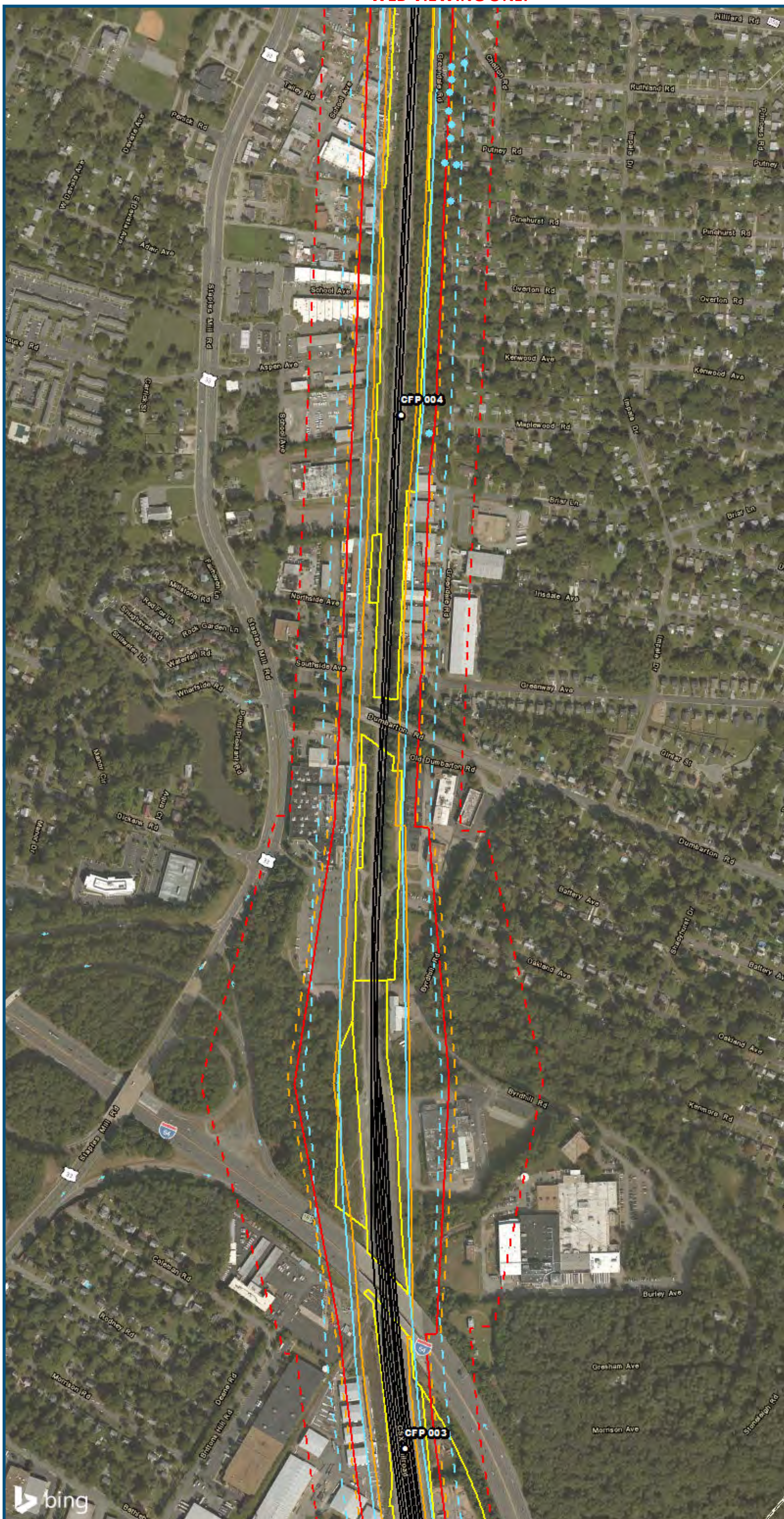




0 250 500
Feet
1 inch = 500 feet
@ 11 x 17 inches
Projection: Lambert Conformal Conic
State Plane Virginia North FIPS 4501 Feet
North American Datum of 1983
Imagery/Basemap Source: 2015 Bing
Aerial Imagery; ESRI World Transportation

- Legend**
- Category 1 Moderate Noise Impact Contour
 - Category 1 Severe Noise Impact Contour
 - Category 1 Moderate Noise Impacts
 - Category 1 Severe Noise Impacts
 - Category 2 Moderate Noise Impact Contour
 - Category 2 Severe Noise Impact Contour
 - Category 2 Moderate Noise Impacts
 - Category 2 Severe Noise Impacts
 - Category 3 Moderate Noise Impact Contour
 - Category 3 Severe Noise Impact Contour
 - Category 3 Moderate Noise Impacts
 - Category 3 Severe Noise Impacts
 - CSXT Mileposts
 - Track - Existing
 - Stations
 - Proposed Stations
 - CSXT ROW (County Parcel Data)
 - City/County Boundary

Appendix H
Noise Analysis
Area 6A:
Staples Mill
Station Only

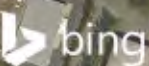


0 250 500
 Feet
 1 inch = 500 feet
 @ 11 x 17 inches
 Projection: Lambert Conformal Conic
 State Plane Virginia North FIPS 4501 Feet
 North American Datum of 1983
 Imagery/Basemap Source: 2015 Bing
 Aerial Imagery; ESRI World Transportation

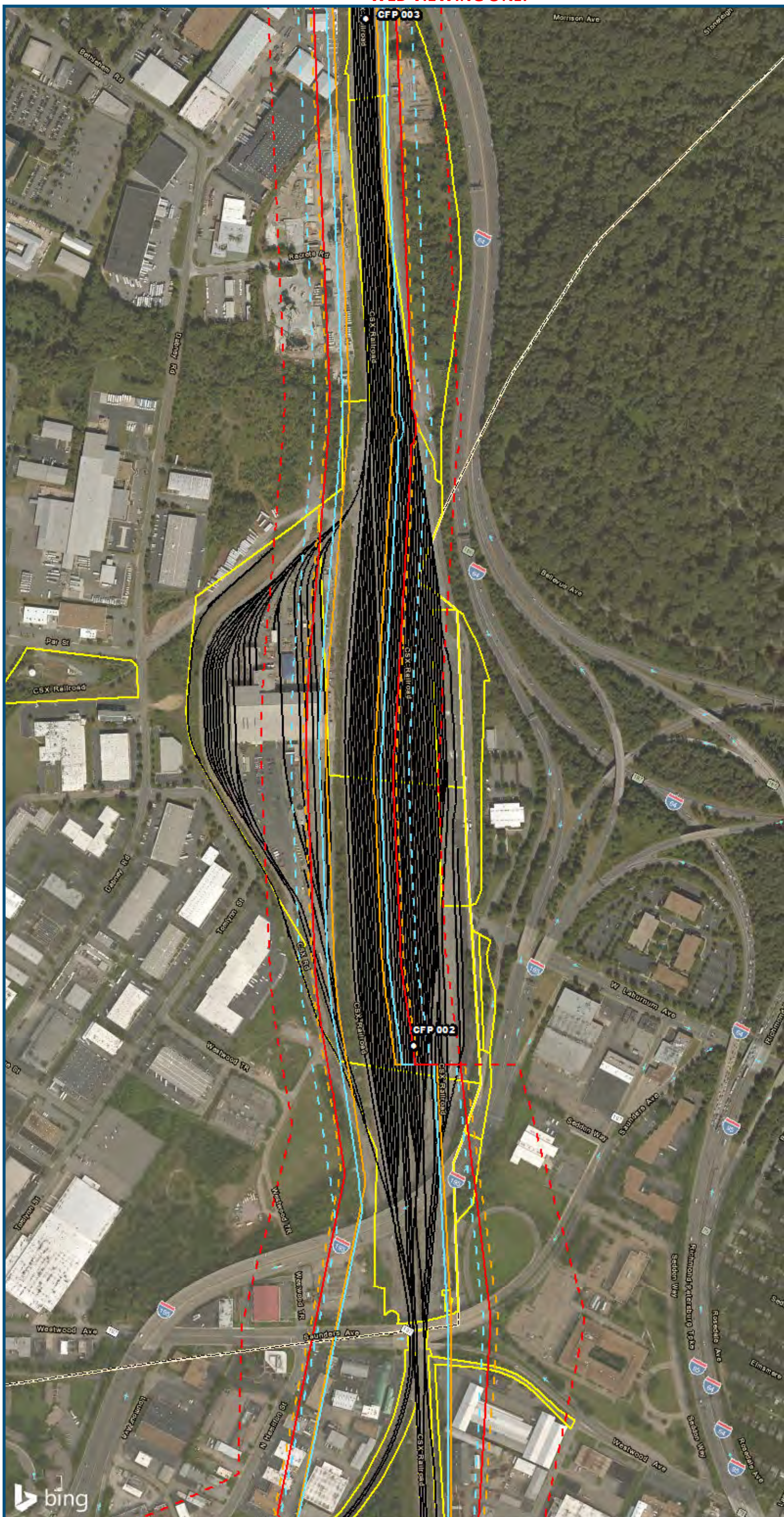
Legend

- Category 1 Moderate Noise Impact Contour
- Category 1 Severe Noise Impact Contour
- Category 1 Moderate Noise Impacts
- Category 1 Severe Noise Impacts
- Category 2 Moderate Noise Impact Contour
- Category 2 Severe Noise Impact Contour
- Category 2 Moderate Noise Impacts
- Category 2 Severe Noise Impacts
- Category 3 Moderate Noise Impact Contour
- Category 3 Severe Noise Impact Contour
- Category 3 Moderate Noise Impacts
- Category 3 Severe Noise Impacts
- CSXT Mileposts
- Track - Existing
- Stations
- Proposed Stations
- CSXT ROW (County Parcel Data)
- City/County Boundary

**Appendix H
 Noise Analysis
 Area 6A:
 Staples Mill
 Station Only**



\\dcis-main\gis_data\GIS\Projects\0115-46_VA Dept of Rail-Public Transportation\0239056_RAPS-4\IT\Dev-Concept\Eng\map_docs\mxd\01EIS\Tech_Reports\Noise and Vibration\Web_Area6A_Mapbook_11x17_WEB.mxd | Last Updated: 08.15.2017



0 250 500
 Feet
 1 inch = 500 feet
 @ 11 x 17 inches
 Projection: Lambert Conformal Conic
 State Plane Virginia North FIPS 4501 Feet
 North American Datum of 1983
 Imagery/Basemap Source: 2015 Bing
 Aerial Imagery; ESRI World Transportation

Legend

- Category 1 Moderate Noise Impact Contour
- Category 1 Severe Noise Impact Contour
- Category 1 Moderate Noise Impacts
- Category 1 Severe Noise Impacts
- Category 2 Moderate Noise Impact Contour
- Category 2 Severe Noise Impact Contour
- Category 2 Moderate Noise Impacts
- Category 2 Severe Noise Impacts
- Category 3 Moderate Noise Impact Contour
- Category 3 Severe Noise Impact Contour
- Category 3 Moderate Noise Impacts
- Category 3 Severe Noise Impacts
- CSXT Mileposts
- Track - Existing
- Stations
- Proposed Stations
- CSXT ROW (County Parcel Data)
- City/County Boundary

**Appendix H
 Noise Analysis
 Area 6A:
 Staples Mill
 Station Only**



\\dcis-main\gis_data\GIS\Projects\0115-45_VA_Dep\toRail-Public\Transportation\0239056_RAPS-4\ITDev-Concept\Eng\map_docs\mxd\01EIS\Tech_Reports\Noise\Area6A_Mapbook_11x17_WEB.mxd | Last Updated: 08.15.2017

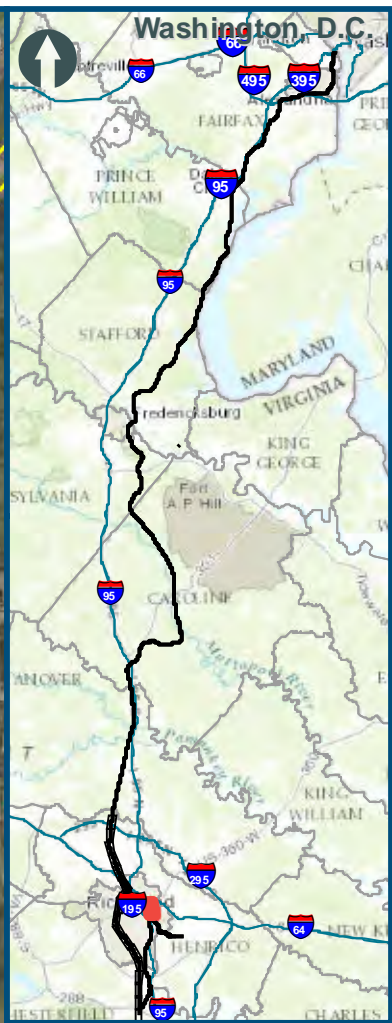
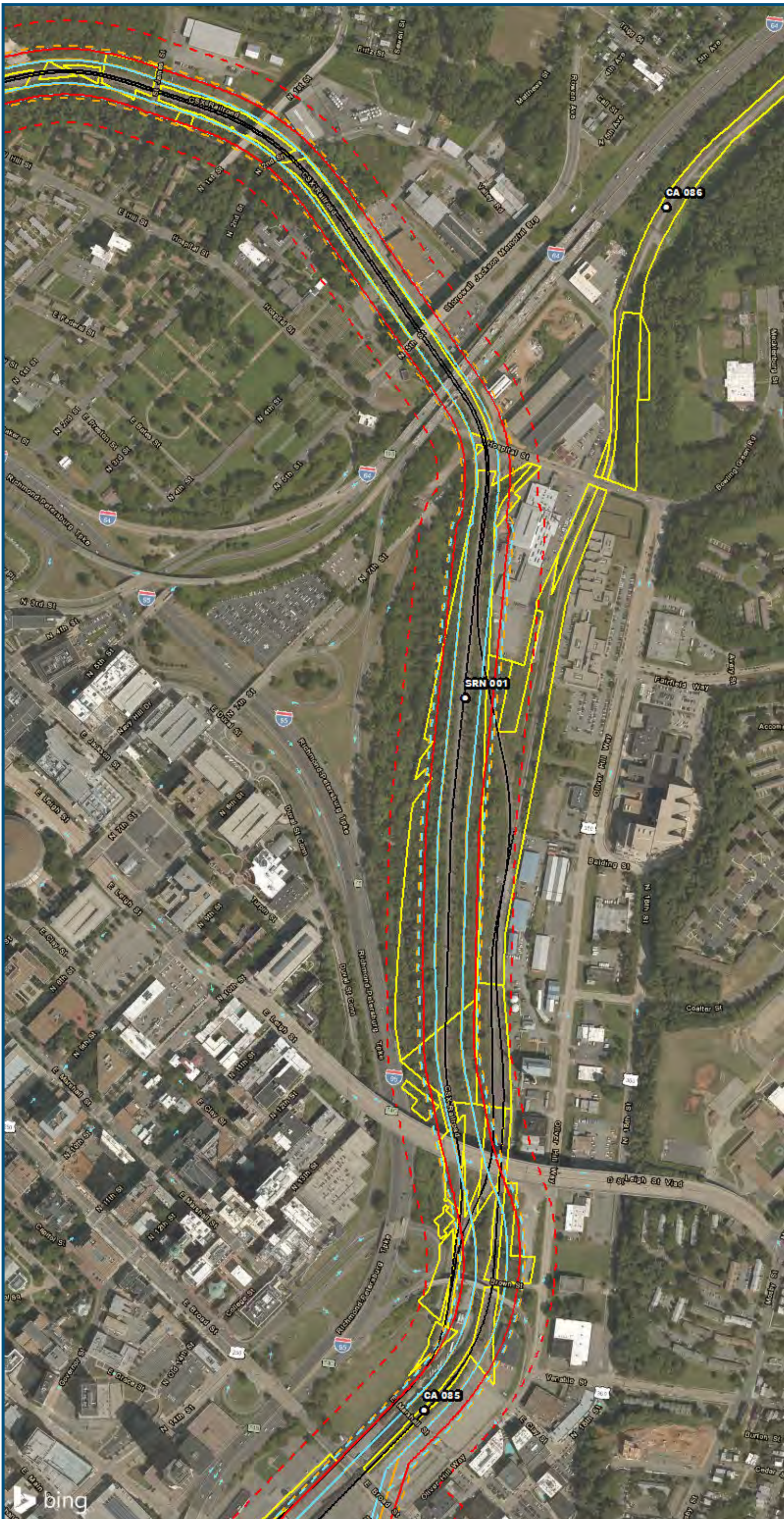


0 250 500
 Feet
 1 inch = 500 feet
 @ 11 x 17 inches
 Projection: Lambert Conformal Conic
 State Plane Virginia North FIPS 4501 Feet
 North American Datum of 1983
 Imagery/Basemap Source: 2015 Bing
 Aerial Imagery; ESRI World Transportation

Legend

- Category 1 Moderate Noise Impact Contour
- Category 1 Severe Noise Impact Contour
- Category 1 Moderate Noise Impacts
- Category 1 Severe Noise Impacts
- Category 2 Moderate Noise Impact Contour
- Category 2 Severe Noise Impact Contour
- Category 2 Moderate Noise Impacts
- Category 2 Severe Noise Impacts
- Category 3 Moderate Noise Impact Contour
- Category 3 Severe Noise Impact Contour
- Category 3 Moderate Noise Impacts
- Category 3 Severe Noise Impacts
- CSXT Mileposts
- Track - Existing
- Stations
- Proposed Stations
- CSXT ROW (County Parcel Data)
- City/County Boundary

**Appendix H
 Noise Analysis
 Area 6A:
 Staples Mill
 Station Only**



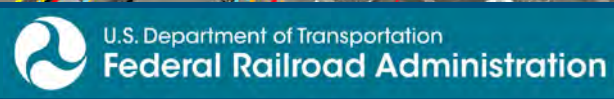
0 250 500
 Feet
 1 inch = 500 feet
 @ 11 x 17 inches
 Projection: Lambert Conformal Conic
 State Plane Virginia North FIPS 4501 Feet
 North American Datum of 1983
 Imagery/Basemap Source: 2015 Bing
 Aerial Imagery; ESRI World Transportation

Legend

- Category 1 Moderate Noise Impact Contour
- Category 1 Severe Noise Impact Contour
- Category 1 Moderate Noise Impacts
- Category 1 Severe Noise Impacts
- Category 2 Moderate Noise Impact Contour
- Category 2 Severe Noise Impact Contour
- Category 2 Moderate Noise Impacts
- Category 2 Severe Noise Impacts
- Category 3 Moderate Noise Impact Contour
- Category 3 Severe Noise Impact Contour
- Category 3 Moderate Noise Impacts
- Category 3 Severe Noise Impacts
- CSXT Mileposts
- Track - Existing
- Stations
- Proposed Stations
- CSXT ROW (County Parcel Data)
- City/County Boundary

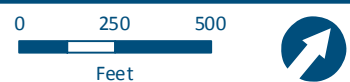
**Appendix H
 Noise Analysis
 Area 6A:
 Staples Mill
 Station Only**

\cds\main\gis_data\GIS\Projects\0115-45_VA_Depot\Rail-Public\GIS\Tech_Reports\Noise\Area6A_Mapbook_11x17_WEB.mxd | Last Updated: 08/15/2017



www.DC2RVArail.com





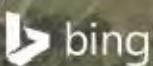
Feet
1 inch = 500 feet
@ 11 x 17 inches
Projection: Lambert Conformal Conic
State: Plane Virginia North FIPS 4501 Feet
North American Datum of 1983
Imagery/Basemap Source: 2015 Bing
Aerial Imagery; ESRI World Transportation

Legend

- Category 1 Moderate Noise Impact Contour
- Category 1 Severe Noise Impact Contour
- Category 1 Moderate Noise Impacts
- Category 1 Severe Noise Impacts
- Category 2 Moderate Noise Impact Contour
- Category 2 Severe Noise Impact Contour
- Category 2 Moderate Noise Impacts
- Category 2 Severe Noise Impacts
- Category 3 Moderate Noise Impact Contour
- Category 3 Severe Noise Impact Contour
- Category 3 Moderate Noise Impacts
- Category 3 Severe Noise Impacts
- CSXT Mileposts
- Track - Existing
- Stations
- Proposed Stations
- CSXT ROW (County Parcel Data)
- City/County Boundary

Appendix H Noise Analysis Area 6A: Staples Mill Station Only

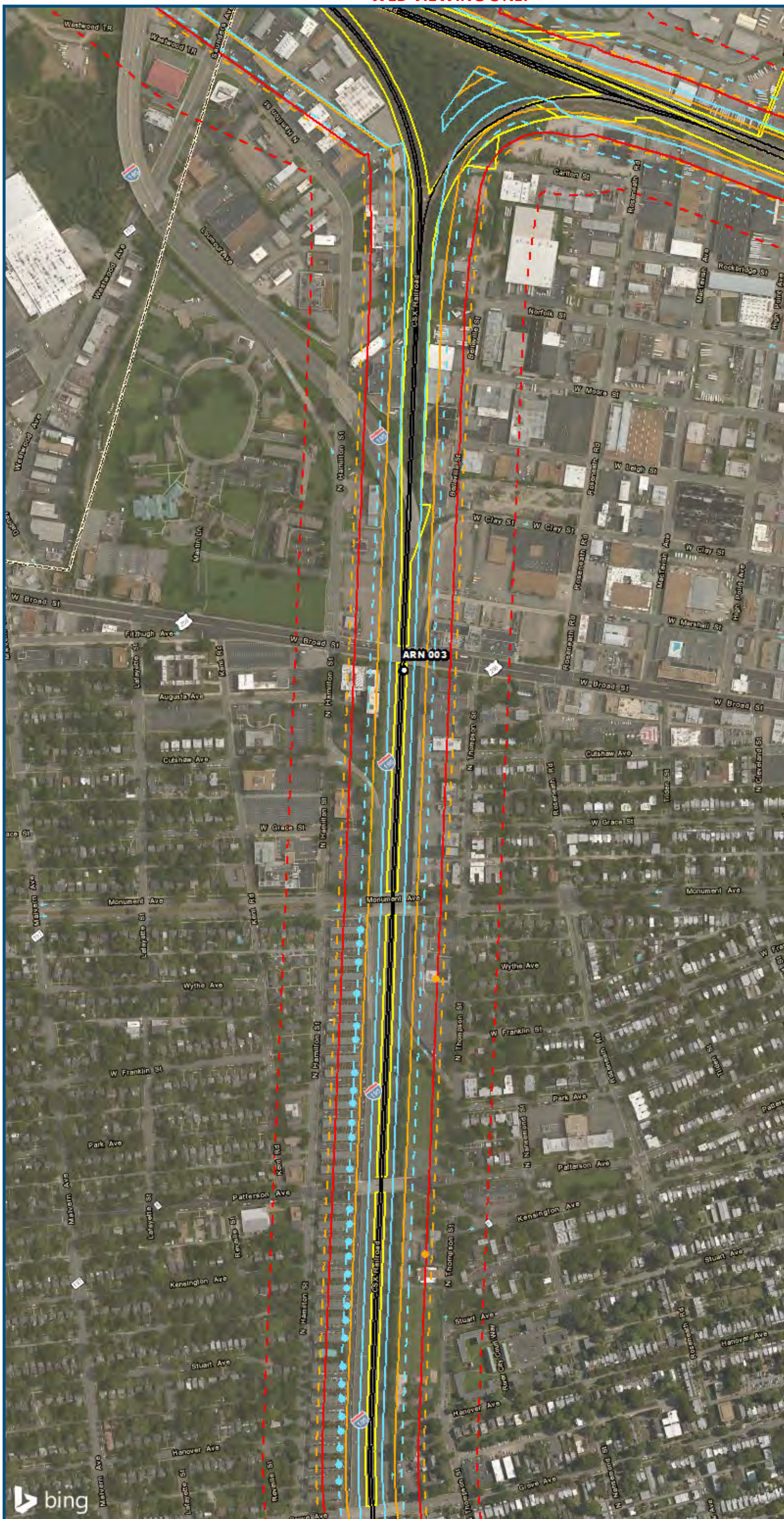
Sheet 10 of 21



U.S. Department of Transportation
Federal Railroad Administration

www.DC2RVArail.com



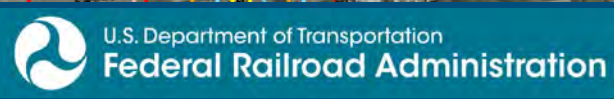


0 250 500
 Feet
 1 inch = 500 feet
 @ 11 x 17 inches
 Projection: Lambert Conformal Conic
 State Plane Virginia North FIPS 4501 Feet
 North American Datum of 1983
 Imagery/Basemap Source: 2015 Bing
 Aerial Imagery; ESRI World Transportation

- Legend**
- Category 1 Moderate Noise Impact Contour
 - Category 1 Severe Noise Impact Contour
 - Category 1 Moderate Noise Impacts
 - Category 1 Severe Noise Impacts
 - Category 2 Moderate Noise Impact Contour
 - Category 2 Severe Noise Impact Contour
 - Category 2 Moderate Noise Impacts
 - Category 2 Severe Noise Impacts
 - Category 3 Moderate Noise Impact Contour
 - Category 3 Severe Noise Impact Contour
 - Category 3 Moderate Noise Impacts
 - Category 3 Severe Noise Impacts
 - CSXT Mileposts
 - Track - Existing
 - Stations
 - Proposed Stations
 - CSXT ROW (County Parcel Data)
 - City/County Boundary

**Appendix H
 Noise Analysis
 Area 6A:
 Staples Mill
 Station Only**

\\dcis-main\gis_data\GIS\Projects\0115-46_VA_Depot\Rail-Public\T-transportation\0239056_RAPS-4\IT-Dev-Concept\Eng\map_docs\mxd\0239056_Versions\NoiseVib_Area6A_Mapbook_11x17_WEB.mxd | Last Updated: 08.15.2017



www.DC2RVArail.com





0 250 500
 Feet
 1 inch = 500 feet
 @ 11 x 17 inches
 Projection: Lambert Conformal Conic
 State Plane Virginia North FIPS 4501 Feet
 North American Datum of 1983
 Imagery/Basemap Source: 2015 Bing
 Aerial Imagery; ESRI World Transportation

Legend

- Category 1 Moderate Noise Impact Contour
- Category 1 Severe Noise Impact Contour
- Category 1 Moderate Noise Impacts
- Category 1 Severe Noise Impacts
- Category 2 Moderate Noise Impact Contour
- Category 2 Severe Noise Impact Contour
- Category 2 Moderate Noise Impacts
- Category 2 Severe Noise Impacts
- Category 3 Moderate Noise Impact Contour
- Category 3 Severe Noise Impact Contour
- Category 3 Moderate Noise Impacts
- Category 3 Severe Noise Impacts
- CSXT Mileposts
- Track - Existing
- Stations
- Proposed Stations
- CSXT ROW (County Parcel Data)
- City/County Boundary

**Appendix H
 Noise Analysis
 Area 6A:
 Staples Mill
 Station Only**

\\dcis-main\gis_data\GIS\Projects\0115-46_VA_Depot\Rail-Public\Transportation\0239056_RAPS-4\ITDev-Concept\Eng\map_docs\mxd\01EIS\Tech_Reports\Noise\NoiseVib_Area6A_Mapbook_11x17_WEB.mxd | Last Updated: 08.15.2017



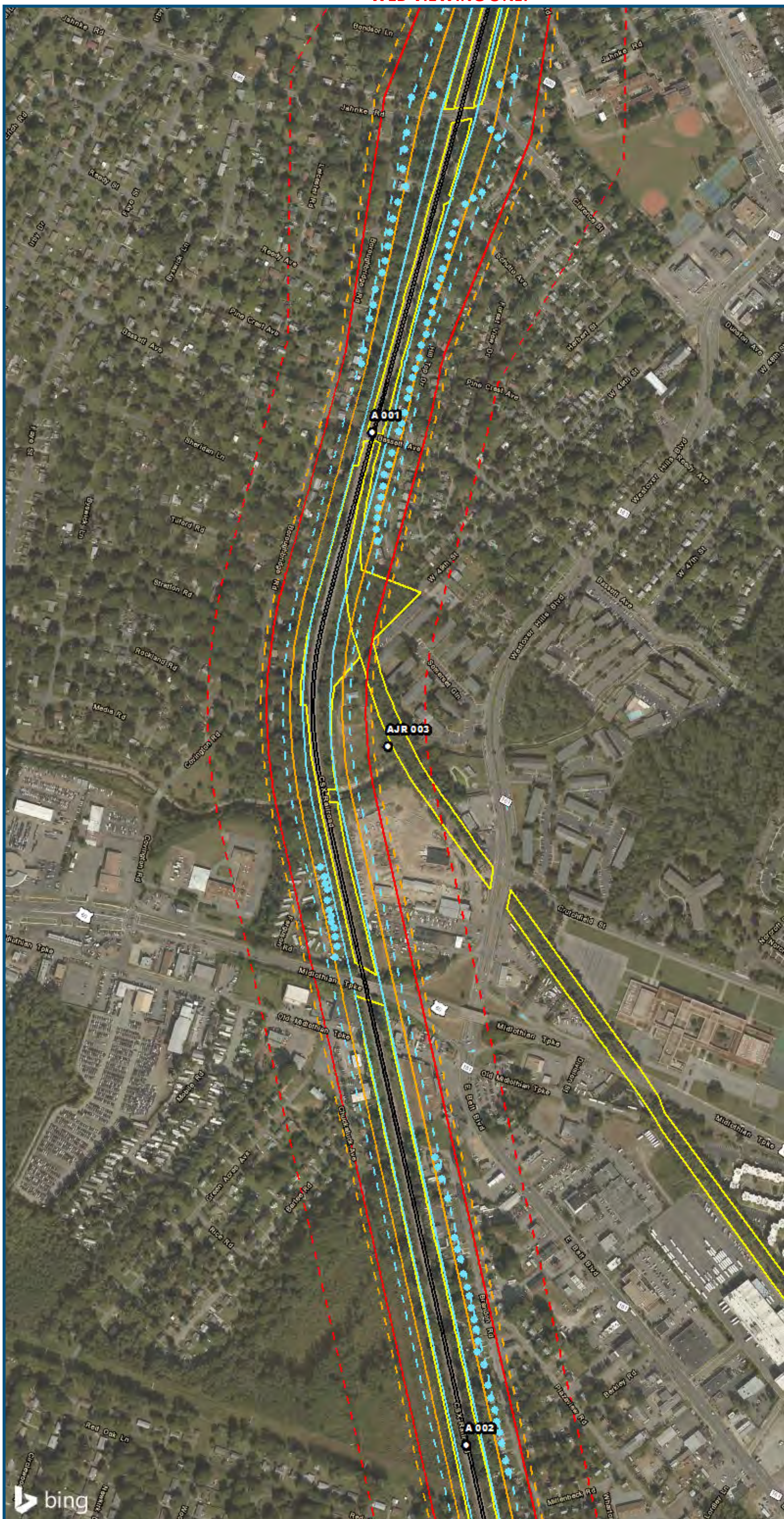
0 250 500
 Feet
 1 inch = 500 feet
 @ 11 x 17 inches
 Projection: Lambert Conformal Conic
 State Plane Virginia North FIPS 4501 Feet
 North American Datum of 1983
 Imagery/Basemap Source: 2015 Bing
 Aerial Imagery; ESRI World Transportation

Legend

- Category 1 Moderate Noise Impact Contour
- Category 1 Severe Noise Impact Contour
- Category 1 Moderate Noise Impacts
- Category 1 Severe Noise Impacts
- Category 2 Moderate Noise Impact Contour
- Category 2 Severe Noise Impact Contour
- Category 2 Moderate Noise Impacts
- Category 2 Severe Noise Impacts
- Category 3 Moderate Noise Impact Contour
- Category 3 Severe Noise Impact Contour
- Category 3 Moderate Noise Impacts
- Category 3 Severe Noise Impacts
- CSXT Mileposts
- Track - Existing
- Stations
- Proposed Stations
- CSXT ROW (County Parcel Data)
- City/County Boundary

**Appendix H
 Noise Analysis
 Area 6A:
 Staples Mill
 Station Only**

\\dcis-main\gis_data\GIS\Projects\0115-46_VA_Dep\toRail-Public\Transportation\0239056_RAPS-4AltDev-ConcepTEng\map_docs\mxd\01EIS\Tech_Reports\Noise\Area6A_Mapbook_11x17_WEB.mxd | Last Updated: 08.15.2017



0 250 500
 Feet
 1 inch = 500 feet
 @ 11 x 17 inches
 Projection: Lambert Conformal Conic
 State Plane Virginia North FIPS 4501 Feet
 North American Datum of 1983
 Imagery/Basemap Source: 2015 Bing
 Aerial Imagery; ESRI World Transportation

Legend

- Category 1 Moderate Noise Impact Contour
- Category 1 Severe Noise Impact Contour
- Category 1 Moderate Noise Impacts
- Category 1 Severe Noise Impacts
- Category 2 Moderate Noise Impact Contour
- Category 2 Severe Noise Impact Contour
- Category 2 Moderate Noise Impacts
- Category 2 Severe Noise Impacts
- Category 3 Moderate Noise Impact Contour
- Category 3 Severe Noise Impact Contour
- Category 3 Moderate Noise Impacts
- Category 3 Severe Noise Impacts
- CSXT Mileposts
- Track - Existing
- Stations
- Proposed Stations
- CSXT ROW (County Parcel Data)
- City/County Boundary

**Appendix H
 Noise Analysis
 Area 6A:
 Staples Mill
 Station Only**

\\dcis-main\gis_data\GIS\Projects\0115-46_VA\Depot\Rail-Public\Tech_Reports\Noise\Area6A_Mapbook_11x17_WEB.mxd | Last Updated: 08.15.2017

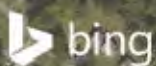


0 250 500
 Feet
 1 inch = 500 feet
 @ 11 x 17 inches
 Projection: Lambert Conformal Conic
 State Plane Virginia North FIPS 4501 Feet
 North American Datum of 1983
 Imagery/Basemap Source: 2015 Bing
 Aerial Imagery; ESRI World Transportation

Legend

- Category 1 Moderate Noise Impact Contour
- Category 1 Severe Noise Impact Contour
- Category 1 Moderate Noise Impacts
- Category 1 Severe Noise Impacts
- Category 2 Moderate Noise Impact Contour
- Category 2 Severe Noise Impact Contour
- Category 2 Moderate Noise Impacts
- Category 2 Severe Noise Impacts
- Category 3 Moderate Noise Impact Contour
- Category 3 Severe Noise Impact Contour
- Category 3 Moderate Noise Impacts
- Category 3 Severe Noise Impacts
- CSXT Mileposts
- Track - Existing
- Stations
- Proposed Stations
- CSXT ROW (County Parcel Data)
- City/County Boundary

**Appendix H
 Noise Analysis
 Area 6A:
 Staples Mill
 Station Only**

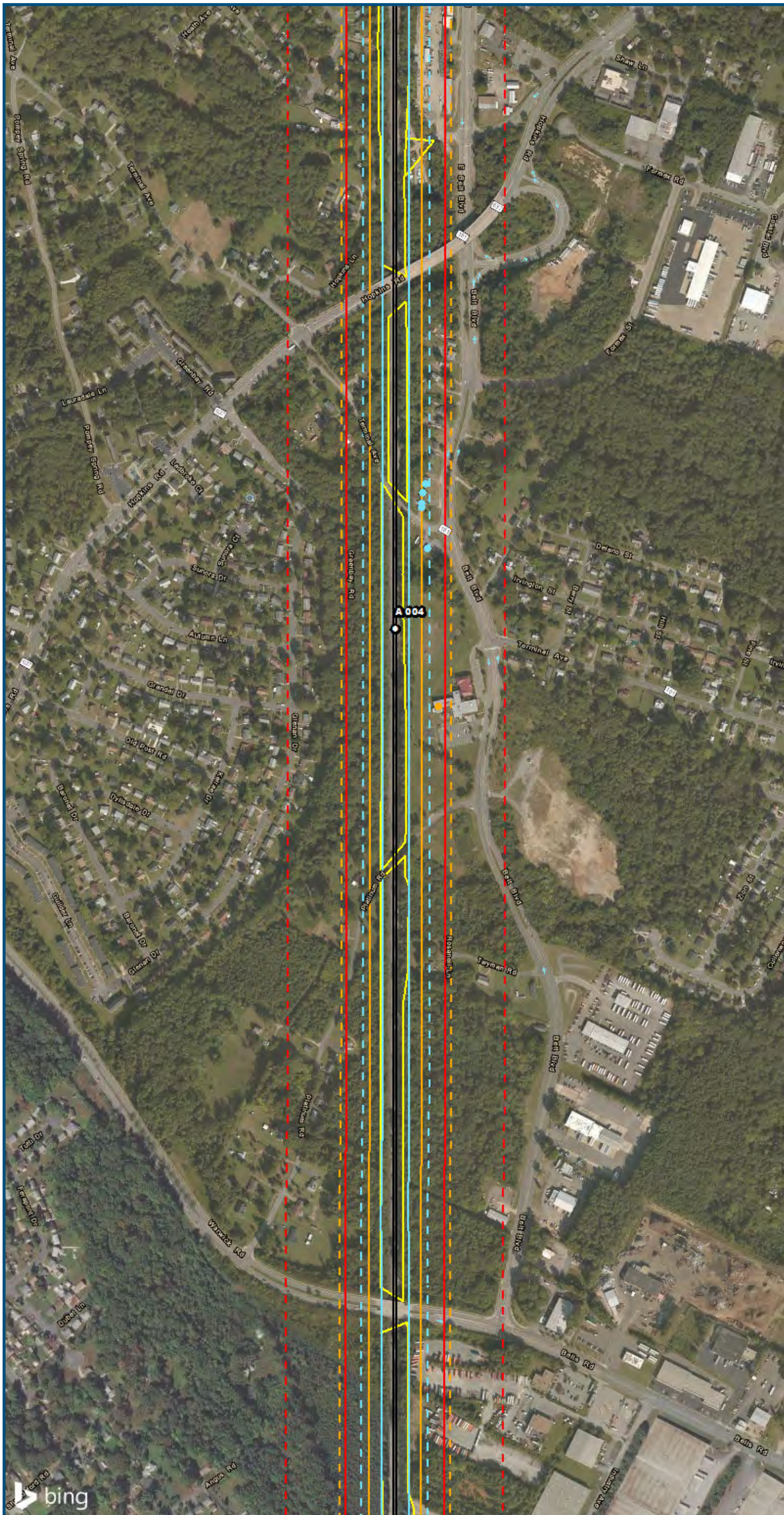


U.S. Department of Transportation
Federal Railroad Administration

www.DC2RVArail.com



\\dcis-main\gis_data\GIS\Projects\0115-46_VA\Depot\Railis-Public\Tech_Reports\Noise\Area6A_Mapbook_11x17_WEB.mxd | Last Updated: 08.15.2017

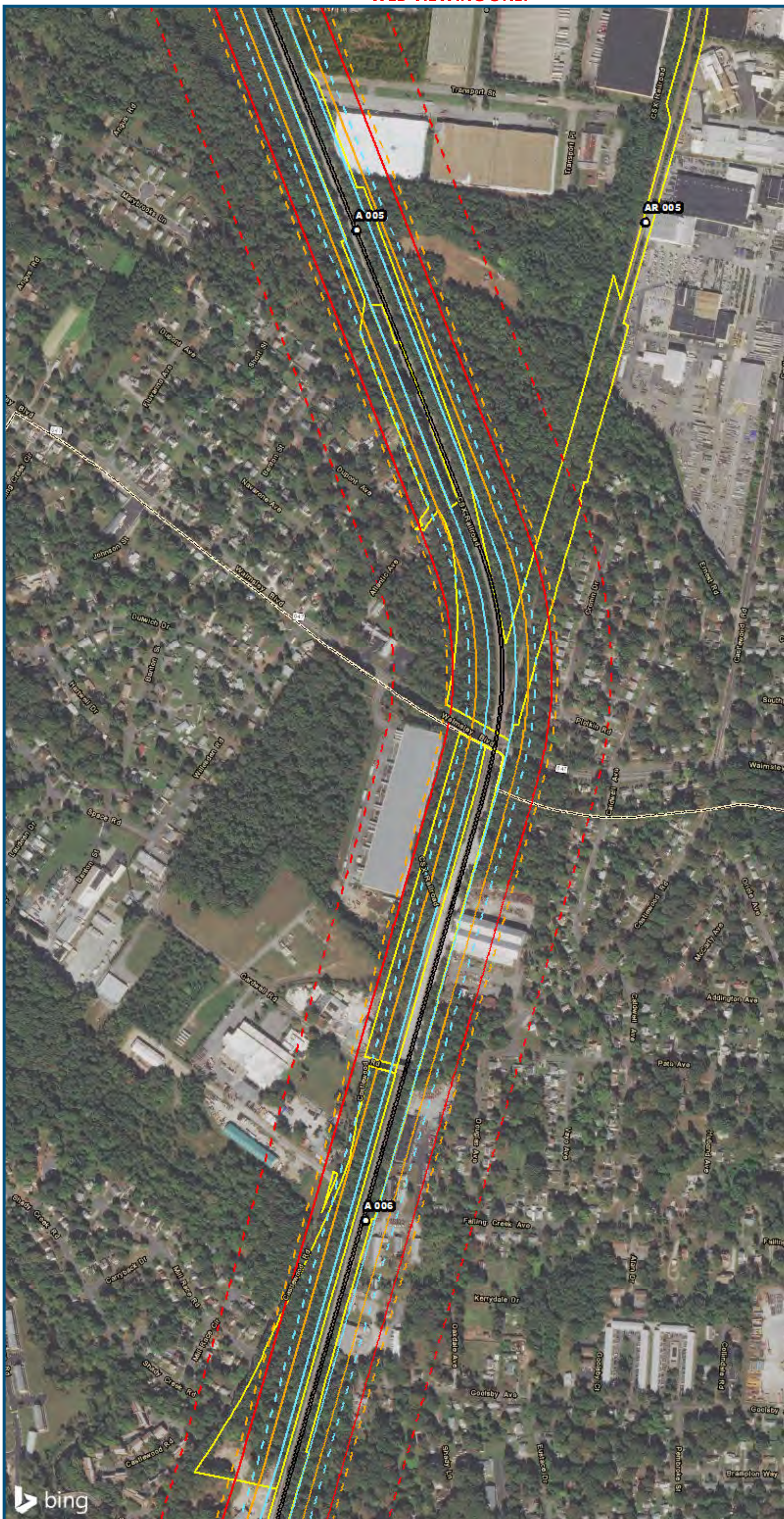


0 250 500
 Feet
 1 inch = 500 feet
 @ 11 x 17 inches
 Projection: Lambert Conformal Conic
 State Plane Virginia North FIPS 4501 Feet
 North American Datum of 1983
 Imagery/Basemap Source: 2015 Bing
 Aerial Imagery; ESRI World Transportation

- Legend**
- - - Category 1 Moderate Noise Impact Contour
 - Category 1 Severe Noise Impact Contour
 - Category 1 Moderate Noise Impacts
 - Category 1 Severe Noise Impacts
 - - - Category 2 Moderate Noise Impact Contour
 - Category 2 Severe Noise Impact Contour
 - Category 2 Moderate Noise Impacts
 - Category 2 Severe Noise Impacts
 - - - Category 3 Moderate Noise Impact Contour
 - Category 3 Severe Noise Impact Contour
 - Category 3 Moderate Noise Impacts
 - Category 3 Severe Noise Impacts
 - CSXT Mileposts
 - Track - Existing
 - Stations
 - Proposed Stations
 - CSXT ROW (County Parcel Data)
 - City/County Boundary

**Appendix H
 Noise Analysis
 Area 6A:
 Staples Mill
 Station Only**

\\dcis-main\gis_data\GIS\Projects\0115-46_VA_Depot\RailtoRich-Public\Transportation\0239056_RAPS-4A\Dev-Concept\Eng\map_docs\mxd\01EIS\Tech_Reports\Noise\NoiseandVibration\Map_Versions\NoiseVib_Area6A_Mapbook_11x17_WEB.mxd | Last Updated: 08.15.2017



0 250 500
 Feet
 1 inch = 500 feet
 @ 11 x 17 inches
 Projection: Lambert Conformal Conic
 State Plane Virginia North FIPS 4501 Feet
 North American Datum of 1983
 Imagery/Basemap Source: 2015 Bing
 Aerial Imagery; ESRI World Transportation

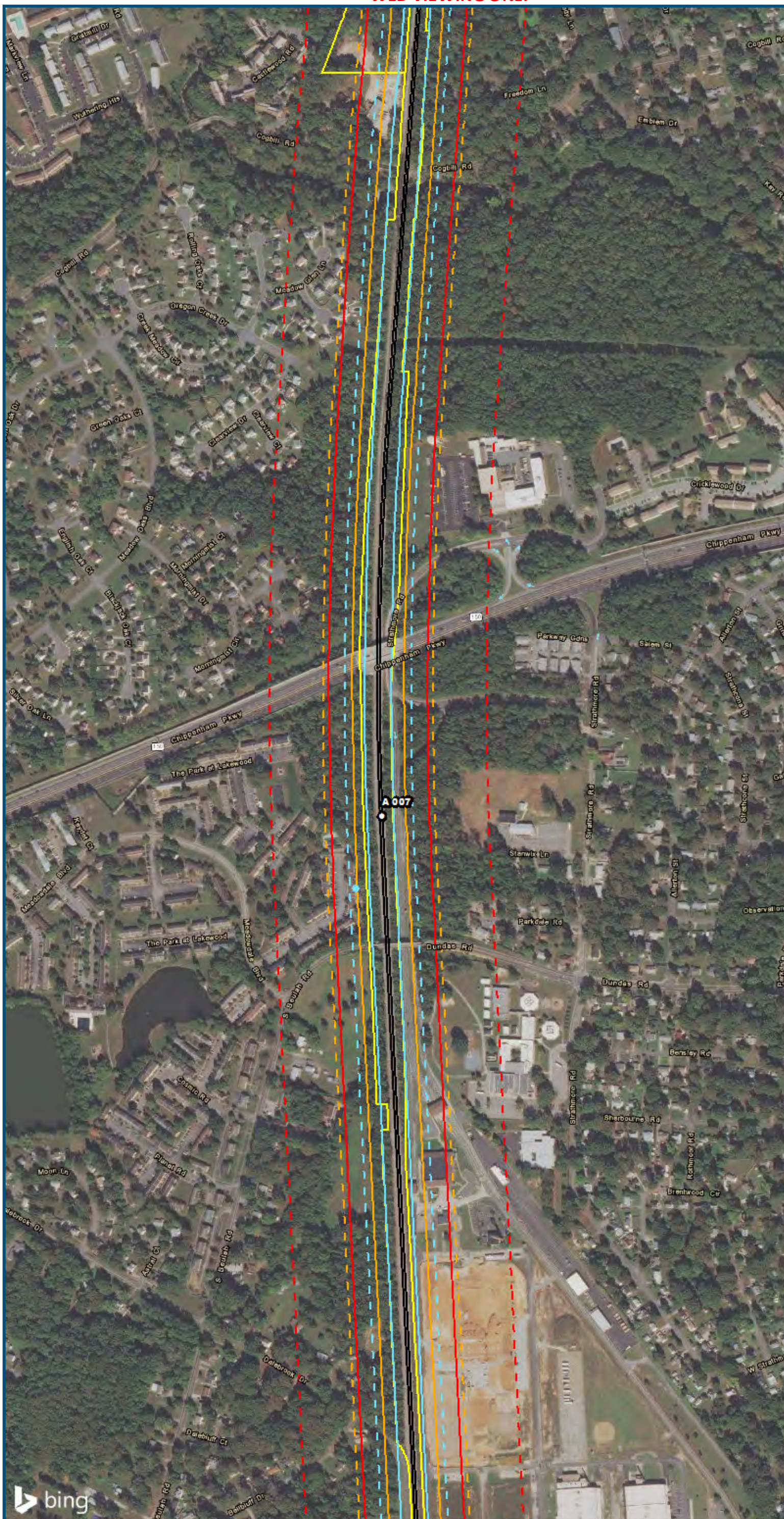
Legend

- Category 1 Moderate Noise Impact Contour
- Category 1 Severe Noise Impact Contour
- Category 1 Moderate Noise Impacts
- Category 1 Severe Noise Impacts
- Category 2 Moderate Noise Impact Contour
- Category 2 Severe Noise Impact Contour
- Category 2 Moderate Noise Impacts
- Category 2 Severe Noise Impacts
- Category 3 Moderate Noise Impact Contour
- Category 3 Severe Noise Impact Contour
- Category 3 Moderate Noise Impacts
- Category 3 Severe Noise Impacts
- CSXT Mileposts
- Track - Existing
- Stations
- Proposed Stations
- CSXT ROW (County Parcel Data)
- City/County Boundary

**Appendix H
 Noise Analysis
 Area 6A:
 Staples Mill
 Station Only**



\\dcis-main\gis_data\GIS\Projects\0115-46_VA_Depot\Rail-Public\T transportation\0239056_RAPS-4\ITDev-Concept\Eng\map_docs\mxd\01EIS\Tech_Reports\Noise\NoiseVib_Area6A_Mapbook_11x17_WEB.mxd | Last Updated: 08.15.2017

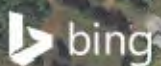


0 250 500
 Feet
 1 inch = 500 feet
 @ 11 x 17 inches
 Projection: Lambert Conformal Conic
 State Plane Virginia North FIPS 4501 Feet
 North American Datum of 1983
 Imagery/Basemap Source: 2015 Bing
 Aerial Imagery; ESRI World Transportation

Legend

- Category 1 Moderate Noise Impact Contour
- Category 1 Severe Noise Impact Contour
- Category 1 Moderate Noise Impacts
- Category 1 Severe Noise Impacts
- Category 2 Moderate Noise Impact Contour
- Category 2 Severe Noise Impact Contour
- Category 2 Moderate Noise Impacts
- Category 2 Severe Noise Impacts
- Category 3 Moderate Noise Impact Contour
- Category 3 Severe Noise Impact Contour
- Category 3 Moderate Noise Impacts
- Category 3 Severe Noise Impacts
- CSXT Mileposts
- Track - Existing
- Stations
- Proposed Stations
- CSXT ROW (County Parcel Data)
- City/County Boundary

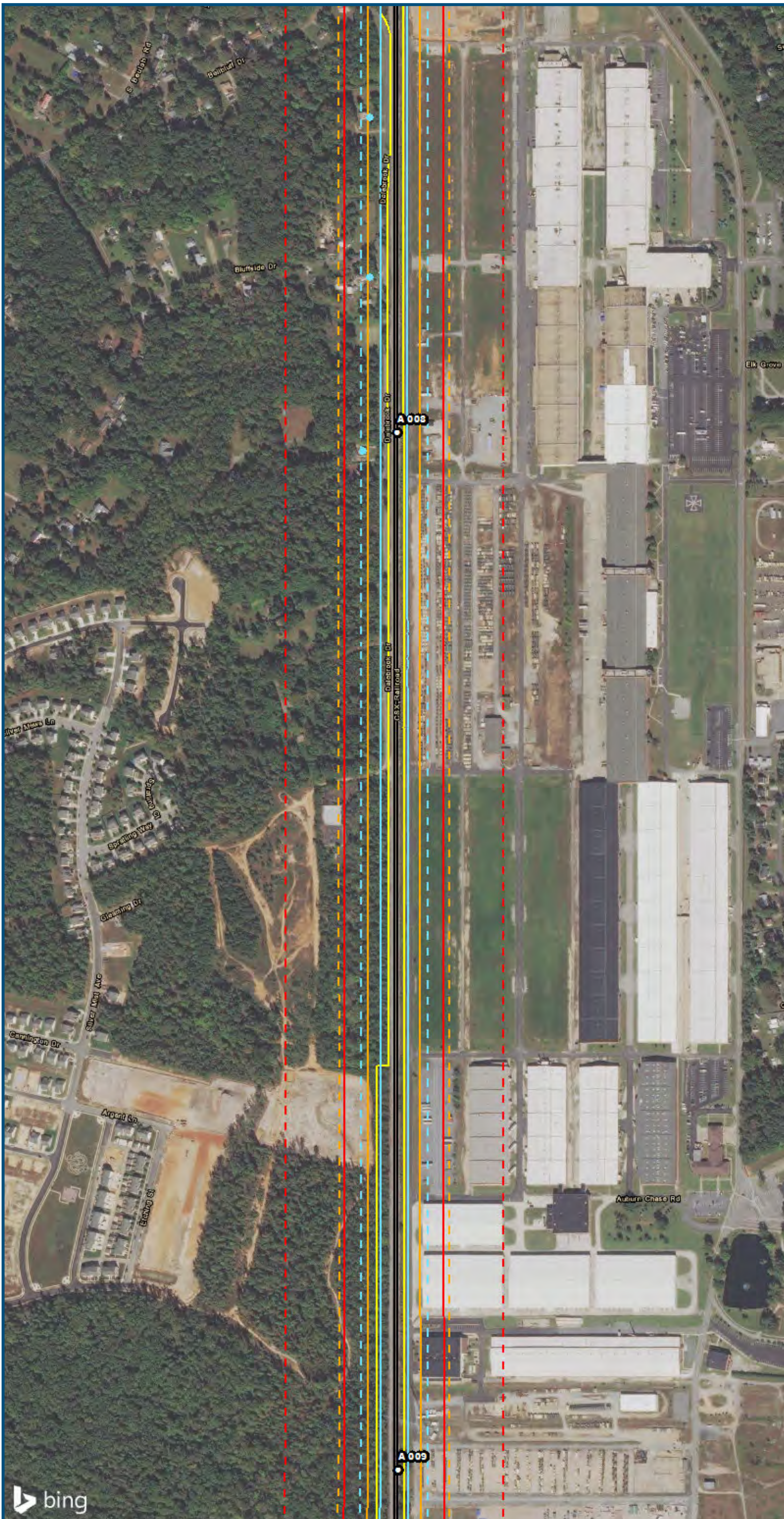
**Appendix H
 Noise Analysis
 Area 6A:
 Staples Mill
 Station Only**



U.S. Department of Transportation
Federal Railroad Administration

www.DC2RVArail.com



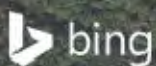


0 250 500
 Feet
 1 inch = 500 feet
 @ 11 x 17 inches
 Projection: Lambert Conformal Conic
 State Plane Virginia North FIPS 4501 Feet
 North American Datum of 1983
 Imagery/Basemap Source: 2015 Bing
 Aerial Imagery; ESRI World Transportation

- Legend**
- Category 1 Moderate Noise Impact Contour
 - Category 1 Severe Noise Impact Contour
 - Category 1 Moderate Noise Impacts
 - Category 1 Severe Noise Impacts
 - Category 2 Moderate Noise Impact Contour
 - Category 2 Severe Noise Impact Contour
 - Category 2 Moderate Noise Impacts
 - Category 2 Severe Noise Impacts
 - Category 3 Moderate Noise Impact Contour
 - Category 3 Severe Noise Impact Contour
 - Category 3 Moderate Noise Impacts
 - Category 3 Severe Noise Impacts
 - CSXT Mileposts
 - Track - Existing
 - Stations
 - Proposed Stations
 - CSXT ROW (County Parcel Data)
 - City/County Boundary

**Appendix H
 Noise Analysis
 Area 6A:
 Staples Mill
 Station Only**

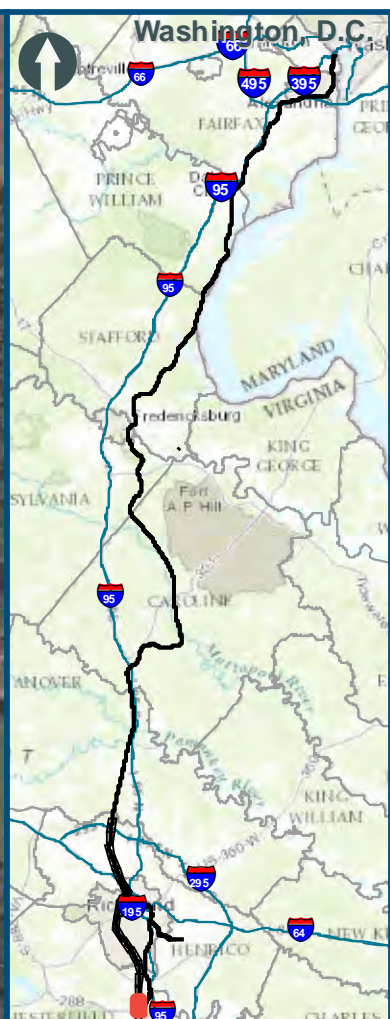
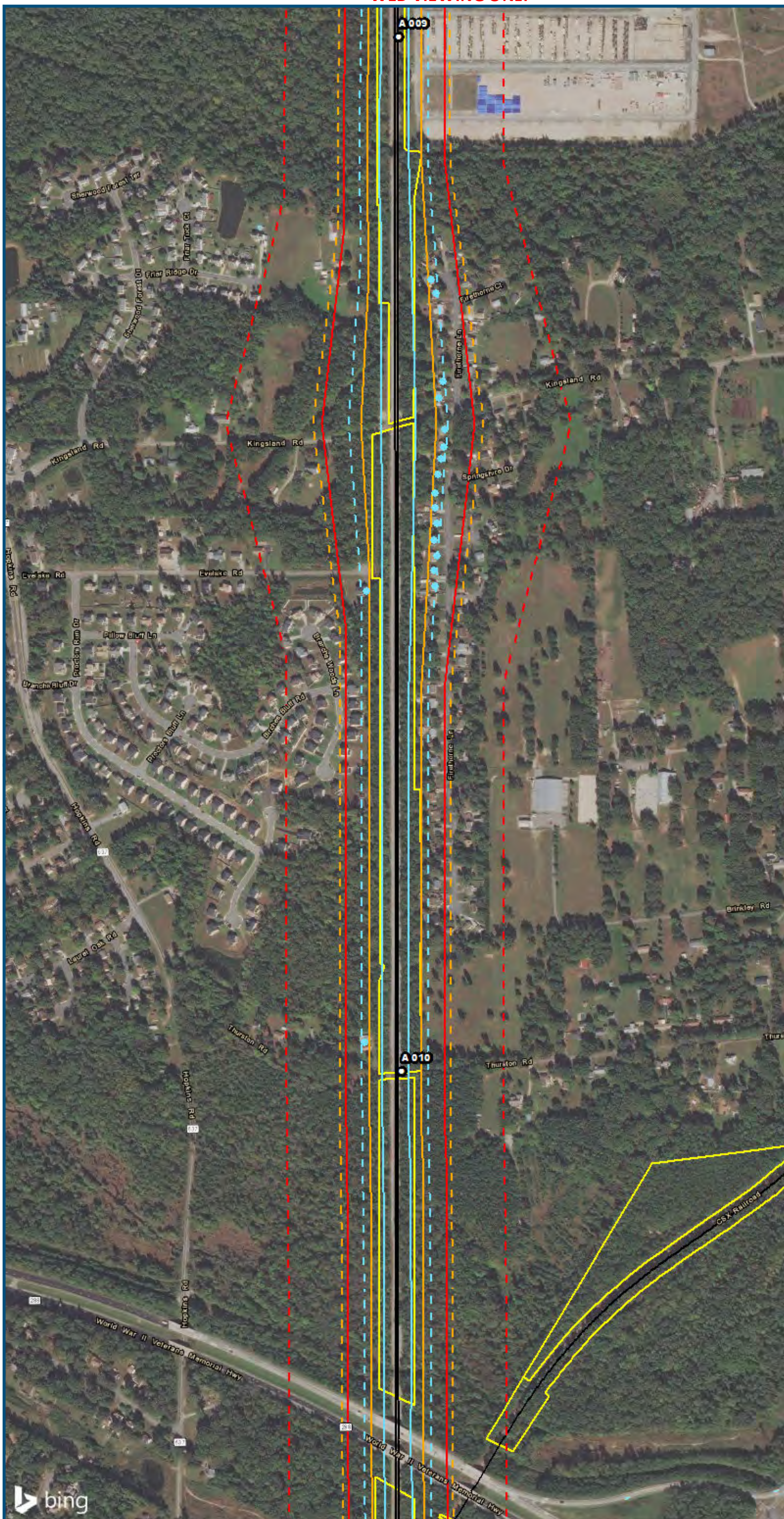
\\dcis-main\gis_data\GIS\Projects\0115-46_VA_DepotofRalls-PublicTransportation\02390566_VA_DepotofRalls-PublicTransportation\02390566_Versions\NoiseVib_Area6A_Mapbook_11x17_WEB.mxd | Last Updated: 08.15.2017



U.S. Department of Transportation
Federal Railroad Administration

www.DC2RVArail.com

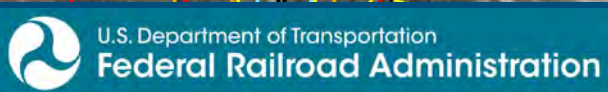
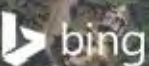




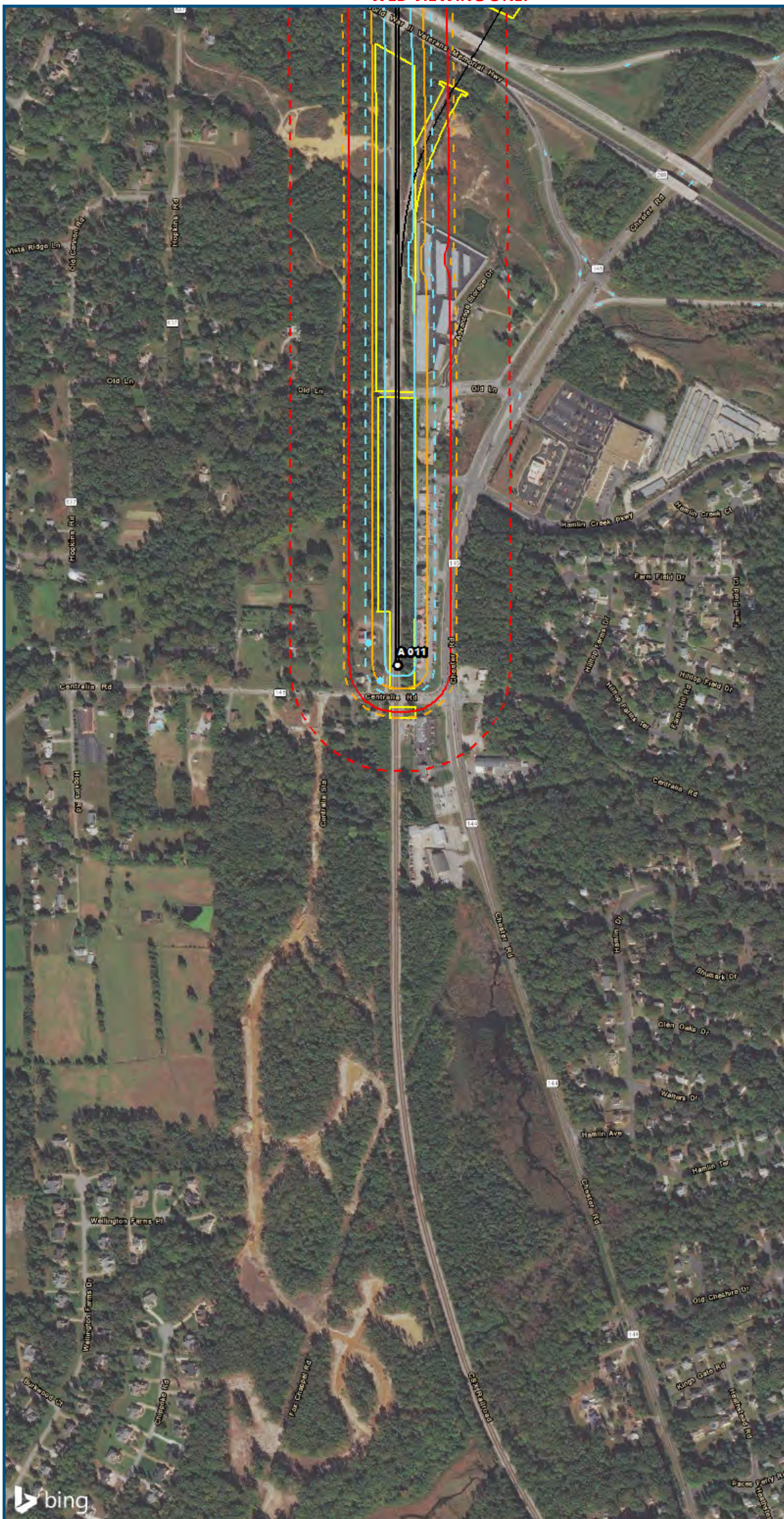
0 250 500
 Feet
 1 inch = 500 feet
 @ 11 x 17 inches
 Projection: Lambert Conformal Conic
 State Plane Virginia North FIPS 4501 Feet
 North American Datum of 1983
 Imagery/Basemap Source: 2015 Bing
 Aerial Imagery; ESRI World Transportation

- Legend**
- Category 1 Moderate Noise Impact Contour
 - Category 1 Severe Noise Impact Contour
 - Category 1 Moderate Noise Impacts
 - Category 1 Severe Noise Impacts
 - Category 2 Moderate Noise Impact Contour
 - Category 2 Severe Noise Impact Contour
 - Category 2 Moderate Noise Impacts
 - Category 2 Severe Noise Impacts
 - Category 3 Moderate Noise Impact Contour
 - Category 3 Severe Noise Impact Contour
 - Category 3 Moderate Noise Impacts
 - Category 3 Severe Noise Impacts
 - CSXT Mileposts
 - Track - Existing
 - Stations
 - Proposed Stations
 - CSXT ROW (County Parcel Data)
 - City/County Boundary

**Appendix H
 Noise Analysis
 Area 6A:
 Staples Mill
 Station Only**



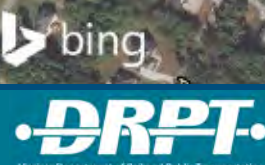
\\dcis-main\gis_data\GIS\Projects\0115-46_VA_Dep\Rail-Public\Transportation\02390566_RAPS-4A\Dev-Concept\Eng\map_docs\mxd\01EIS\Tech_Reports\Noise\Area6A_Mapbook_11x17_WEB.mxd | Last Updated: 08.15.2017



0 250 500
 Feet
 1 inch = 500 feet
 @ 11 x 17 inches
 Projection: Lambert Conformal Conic
 State Plane Virginia North FIPS 4501 Feet
 North American Datum of 1983
 Imagery/Basemap Source: 2015 Bing
 Aerial Imagery; ESRI World Transportation

- Legend**
- - - Category 1 Moderate Noise Impact Contour
 - Category 1 Severe Noise Impact Contour
 - Category 1 Moderate Noise Impacts
 - Category 1 Severe Noise Impacts
 - - - Category 2 Moderate Noise Impact Contour
 - Category 2 Severe Noise Impact Contour
 - Category 2 Moderate Noise Impacts
 - Category 2 Severe Noise Impacts
 - - - Category 3 Moderate Noise Impact Contour
 - Category 3 Severe Noise Impact Contour
 - Category 3 Moderate Noise Impacts
 - Category 3 Severe Noise Impacts
 - CSXT Mileposts
 - Track - Existing
 - 1 Stations
 - 1 Proposed Stations
 - CSXT ROW (County Parcel Data)
 - City/County Boundary

**Appendix H
 Noise Analysis
 Area 6A:
 Staples Mill
 Station Only**



www.DC2RVArail.com



\\dcis-main\gis_data\GIS\Projects\0115-46_VA\Depot\Rail-Public\T transportation\0239056_RAPS-4\IT\Dev-Concept\Eng\map_docs\mxd\01EIS\Tech_Reports\Noise and Vibration\Web_Versions\NoiseVib_Area6A_Mapbook_11x17_WEB.mxd | Last Updated: 08.15.2017