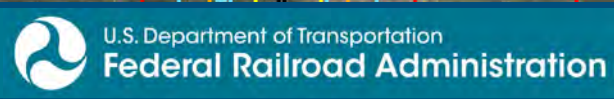


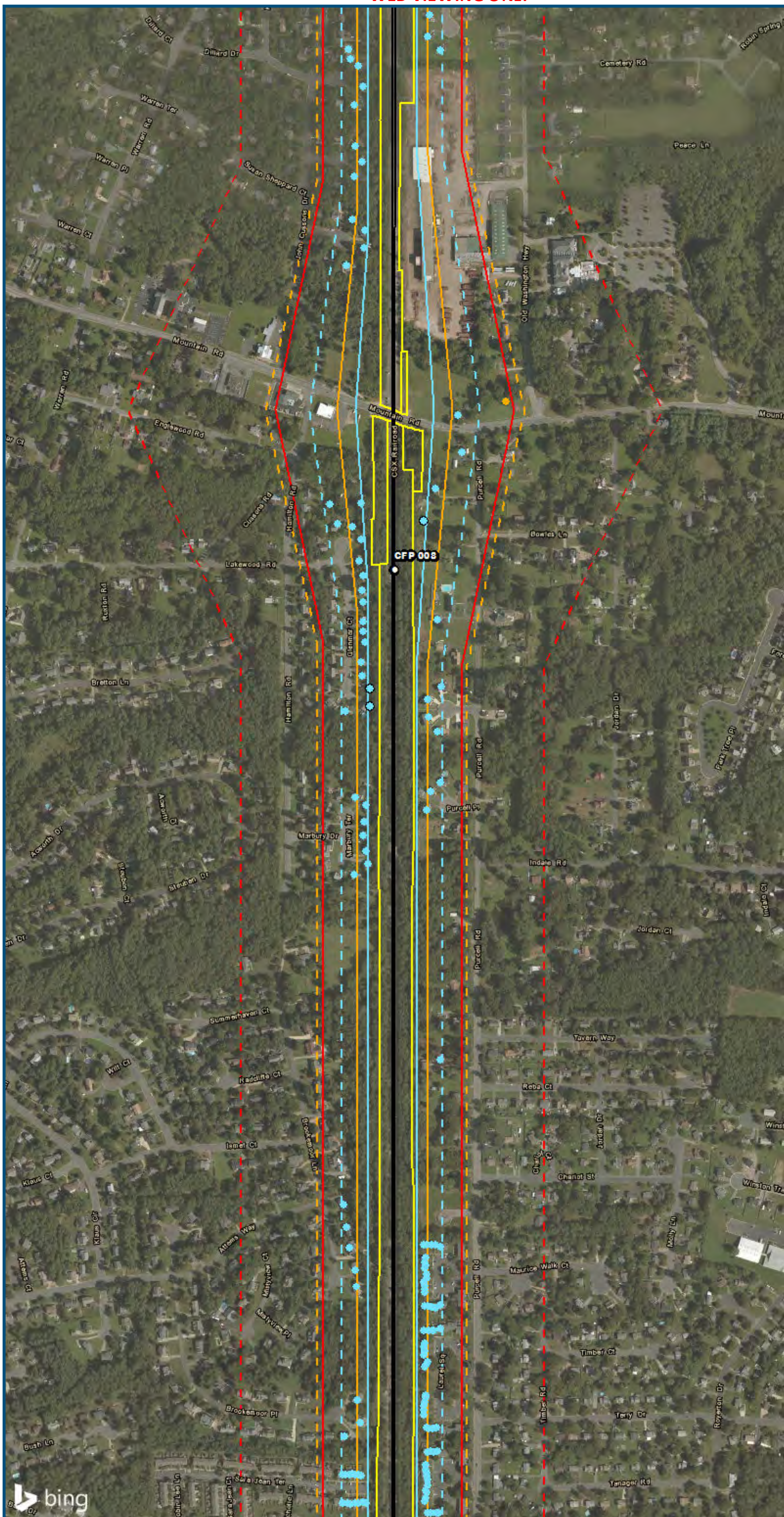
0 250 500  
 Feet  
 1 inch = 500 feet  
 @ 11 x 17 inches  
 Projection: Lambert Conformal Conic  
 State Plane Virginia North FIPS 4501 Feet  
 North American Datum of 1983  
 Imagery/Basemap Source: 2015 Bing  
 Aerial Imagery; ESRI World Transportation

- Legend**
- Category 1 Moderate Noise Impact Contour
  - Category 1 Severe Noise Impact Contour
  - Category 1 Moderate Noise Impacts
  - Category 1 Severe Noise Impacts
  - Category 2 Moderate Noise Impact Contour
  - Category 2 Severe Noise Impact Contour
  - Category 2 Moderate Noise Impacts
  - Category 2 Severe Noise Impacts
  - Category 3 Moderate Noise Impact Contour
  - Category 3 Severe Noise Impact Contour
  - Category 3 Moderate Noise Impacts
  - Category 3 Severe Noise Impacts
  - CSXT Mileposts
  - Track - Existing
  - Stations
  - Proposed Stations
  - CSXT ROW (County Parcel Data)
  - City/County Boundary

**Appendix I  
 Noise Analysis  
 Area 6B-A Line:  
 Boulevard Station  
 Only**



\\dcis-main\gis\_data\GIS\Projects\0115-46\_VA\_Depot\Rail-Public\Transportation\0239056\_RAPS-4\IT\Dev-Concept\Eng\map\_docs\mxd\01EIS\Tech\_Reports\Noise\NoiseVib\_Area6B\_Mapbook\_11x17\_WEB.mxd | Last Updated: 06.15.2017

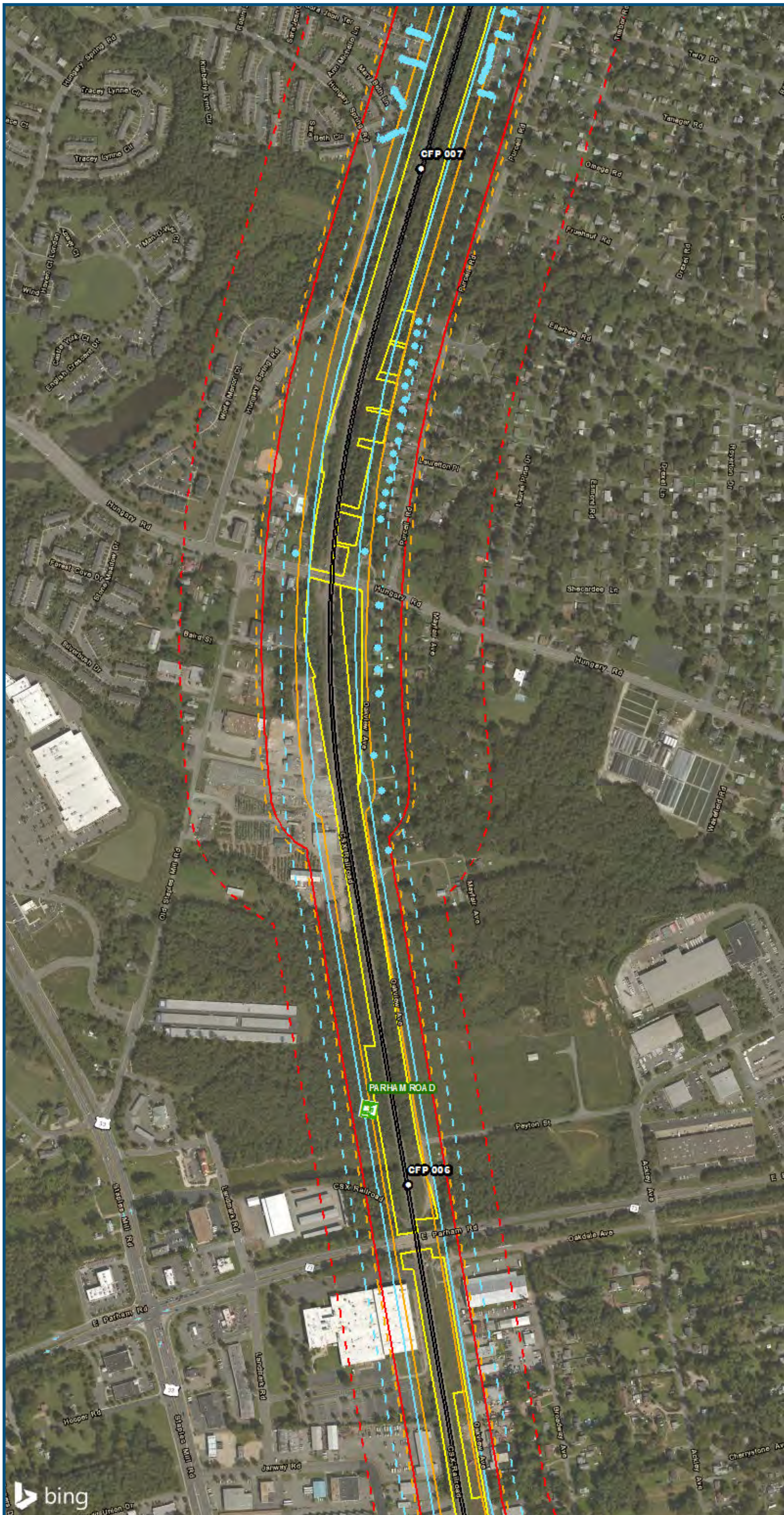


0 250 500  
 Feet  
 1 inch = 500 feet  
 @ 11 x 17 inches  
 Projection: Lambert Conformal Conic  
 State Plane Virginia North FIPS 4501 Feet  
 North American Datum of 1983  
 Imagery/Basemap Source: 2015 Bing  
 Aerial Imagery; ESRI World Transportation

- Legend**
- Category 1 Moderate Noise Impact Contour
  - Category 1 Severe Noise Impact Contour
  - Category 1 Moderate Noise Impacts
  - Category 1 Severe Noise Impacts
  - Category 2 Moderate Noise Impact Contour
  - Category 2 Severe Noise Impact Contour
  - Category 2 Moderate Noise Impacts
  - Category 2 Severe Noise Impacts
  - Category 3 Moderate Noise Impact Contour
  - Category 3 Severe Noise Impact Contour
  - Category 3 Moderate Noise Impacts
  - Category 3 Severe Noise Impacts
  - CSXT Mileposts
  - Track - Existing
  - Stations
  - Proposed Stations
  - CSXT ROW (County Parcel Data)
  - City/County Boundary

**Appendix I  
 Noise Analysis  
 Area 6B-A Line:  
 Boulevard Station  
 Only**

\\dcis-main\gis\_data\GIS\Projects\0115-46\_VA\_Depot\Rail-Public\Transportation\0239056\_RAPS-4\IT\Dev-Concept\Eng\map\_docs\mxd\0115-46\_VA\_Depot\Rail-Public\Transportation\0239056\_Versions\NoiseVib\_Area6B\_A\_Mapbook\_11x17\_WEB.mxd | Last Updated: 06.15.2017



0 250 500  
 Feet  
 1 inch = 500 feet  
 @ 11 x 17 inches  
 Projection: Lambert Conformal Conic  
 State Plane Virginia North FIPS 4501 Feet  
 North American Datum of 1983  
 Imagery/Basemap Source: 2015 Bing  
 Aerial Imagery; ESRI World Transportation

**Legend**

- Category 1 Moderate Noise Impact Contour
- Category 1 Severe Noise Impact Contour
- Category 1 Moderate Noise Impacts
- Category 1 Severe Noise Impacts
- Category 2 Moderate Noise Impact Contour
- Category 2 Severe Noise Impact Contour
- Category 2 Moderate Noise Impacts
- Category 2 Severe Noise Impacts
- Category 3 Moderate Noise Impact Contour
- Category 3 Severe Noise Impact Contour
- Category 3 Moderate Noise Impacts
- Category 3 Severe Noise Impacts
- CSXT Mileposts
- Track - Existing
- Stations
- Proposed Stations
- CSXT ROW (County Parcel Data)
- City/County Boundary

**Appendix I  
 Noise Analysis  
 Area 6B-A Line:  
 Boulevard Station  
 Only**

\\dcis-main\gis\_data\GIS\Projects\0115-46\_VA\_Depot\Rail-Public\GIS\Tech\_Reports\Noise\Noise and Vibration\Map\_Versions\NoiseVib\_Area6B\_A\_Mapbook\_11x17\_WEB.mxd | Last Updated: 06.15.2017



www.DC2RVArail.com



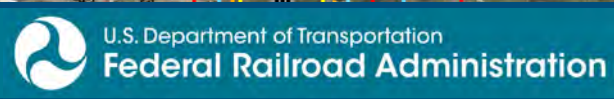


0 250 500  
 Feet  
 1 inch = 500 feet  
 @ 11 x 17 inches  
 Projection: Lambert Conformal Conic  
 State Plane Virginia North FIPS 4501 Feet  
 North American Datum of 1983  
 Imagery/Basemap Source: 2015 Bing  
 Aerial Imagery; ESRI World Transportation

- Legend**
- - - Category 1 Moderate Noise Impact Contour
  - Category 1 Severe Noise Impact Contour
  - Category 1 Moderate Noise Impacts
  - Category 1 Severe Noise Impacts
  - Category 2 Moderate Noise Impact Contour
  - Category 2 Severe Noise Impact Contour
  - Category 2 Moderate Noise Impacts
  - Category 2 Severe Noise Impacts
  - Category 3 Moderate Noise Impact Contour
  - Category 3 Severe Noise Impact Contour
  - Category 3 Moderate Noise Impacts
  - Category 3 Severe Noise Impacts
  - CSXT Mileposts
  - Track - Existing
  - Stations
  - Proposed Stations
  - CSXT ROW (County Parcel Data)
  - City/County Boundary

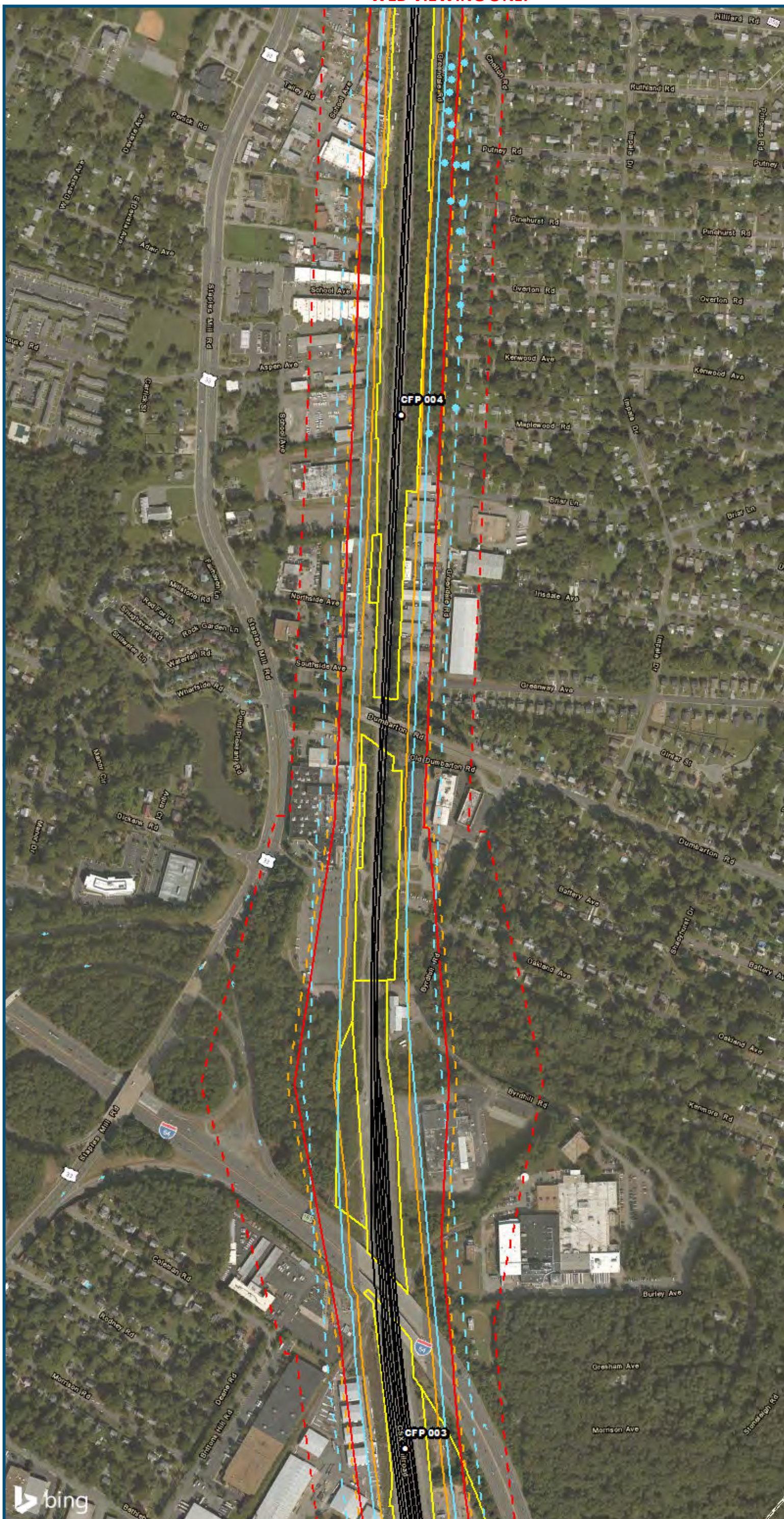
**Appendix I  
 Noise Analysis  
 Area 6B-A Line:  
 Boulevard Station  
 Only**

\\dcis-main\gis\_data\GIS\Projects\0115-45\_VA\_Depot\Rail-Public\GIS\Tech\_Reports\Noise\Noise and Vibration\Mapbook\_11x17\_WEB.mxd | Last Updated: 06.15.2017



[www.DC2RVArail.com](http://www.DC2RVArail.com)



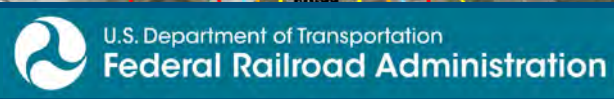


0 250 500  
 Feet  
 1 inch = 500 feet  
 @ 11 x 17 inches  
 Projection: Lambert Conformal Conic  
 State: Plane Virginia North FIPS 4501 Feet  
 North American Datum of 1983  
 Imagery/Basemap Source: 2015 Bing  
 Aerial Imagery; ESRI World Transportation

- Legend**
- - - Category 1 Moderate Noise Impact Contour
  - Category 1 Severe Noise Impact Contour
  - Category 1 Moderate Noise Impacts
  - Category 1 Severe Noise Impacts
  - - - Category 2 Moderate Noise Impact Contour
  - Category 2 Severe Noise Impact Contour
  - Category 2 Moderate Noise Impacts
  - Category 2 Severe Noise Impacts
  - - - Category 3 Moderate Noise Impact Contour
  - Category 3 Severe Noise Impact Contour
  - Category 3 Moderate Noise Impacts
  - Category 3 Severe Noise Impacts
  - CSXT Mileposts
  - Track - Existing
  - Stations
  - Proposed Stations
  - CSXT ROW (County Parcel Data)
  - City/County Boundary

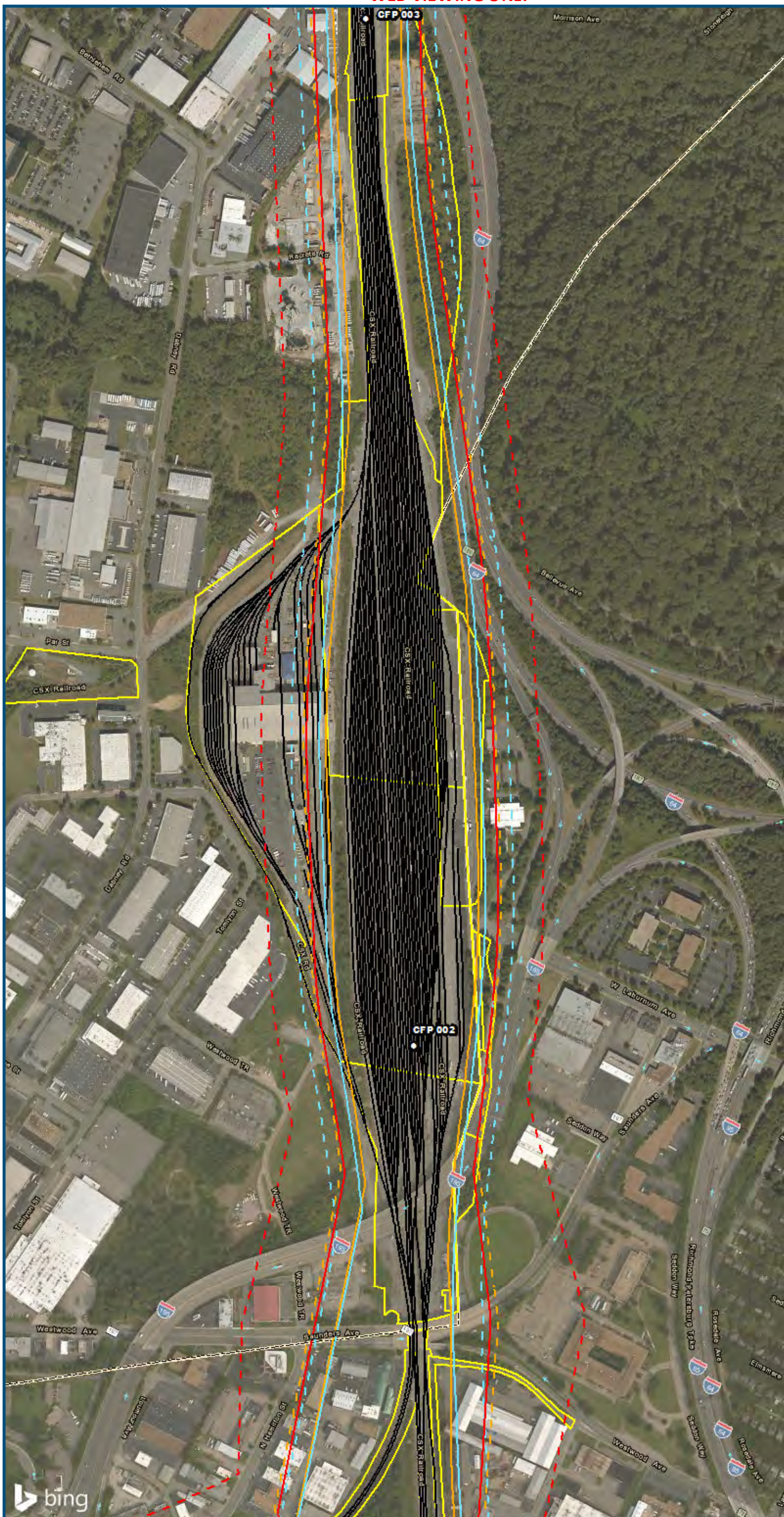
**Appendix I  
 Noise Analysis  
 Area 6B-A Line:  
 Boulevard Station  
 Only**

\\dcis-main\gis\_data\GIS\Projects\0115-46\_VA Dept of Rail\GIS\Public\Transportation\0239056\_RAPS-4\IT\Dev-Concept\Eng\map\_docs\mxd\01EIS\Tech\_Reports\Noise and Vibration\Web\_Versions\NoiseVib\_Area6B\_A\_Mapbook\_11x17\_WEB.mxd | Last Updated: 06.15.2017



www.DC2RVArail.com



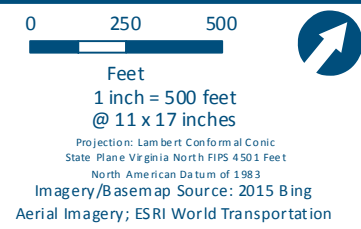


0 250 500  
Feet  
1 inch = 500 feet  
@ 11 x 17 inches  
Projection: Lambert Conformal Conic  
State: Plane Virginia North FIPS 4501 Feet  
North American Datum of 1983  
Imagery/Basemap Source: 2015 Bing  
Aerial Imagery; ESRI World Transportation

- Legend**
- Category 1 Moderate Noise Impact Contour
  - Category 1 Severe Noise Impact Contour
  - Category 1 Moderate Noise Impacts
  - Category 1 Severe Noise Impacts
  - Category 2 Moderate Noise Impact Contour
  - Category 2 Severe Noise Impact Contour
  - Category 2 Moderate Noise Impacts
  - Category 2 Severe Noise Impacts
  - Category 3 Moderate Noise Impact Contour
  - Category 3 Severe Noise Impact Contour
  - Category 3 Moderate Noise Impacts
  - Category 3 Severe Noise Impacts
  - CSXT Mileposts
  - Track - Existing
  - Stations
  - Proposed Stations
  - CSXT ROW (County Parcel Data)
  - City/County Boundary

**Appendix I  
Noise Analysis  
Area 6B-A Line:  
Boulevard Station  
Only**

\\dcis-main\gis\_data\GIS\Projects\0115-45\_VA\DeploRail\Public\Tech\_Reports\Noise\NoiseVib\_Area6B\Mapbook\_11x17\_WEB.mxd | Last Updated: 06.15.2017

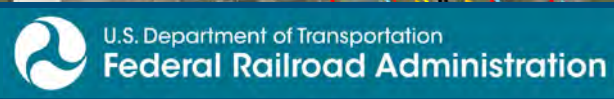


- Legend**
- Category 1 Moderate Noise Impact Contour
  - Category 1 Severe Noise Impact Contour
  - Category 1 Moderate Noise Impacts
  - Category 1 Severe Noise Impacts
  - Category 2 Moderate Noise Impact Contour
  - Category 2 Severe Noise Impact Contour
  - Category 2 Moderate Noise Impacts
  - Category 2 Severe Noise Impacts
  - Category 3 Moderate Noise Impact Contour
  - Category 3 Severe Noise Impact Contour
  - Category 3 Moderate Noise Impacts
  - Category 3 Severe Noise Impacts
  - CSXT Mileposts
  - Track - Existing
  - Stations
  - Proposed Stations
  - CSXT ROW (County Parcel Data)
  - City/County Boundary

**Appendix I  
Noise Analysis  
Area 6B-A Line:  
Boulevard Station  
Only**

Sheet 7 of 21

\\dcis-main\gis\_data\GIS\Projects\0115-45\_VA\_Depot\Rail-Pub\Tech\_Reports\Noise\Area6B\_A\_Line\11x17\_WEB.mxd | Last Updated: 06.15.2017



[www.DC2RVArail.com](http://www.DC2RVArail.com)





0 250 500  
 Feet  
 1 inch = 500 feet  
 @ 11 x 17 inches  
 Projection: Lambert Conformal Conic  
 State: Plane Virginia North FIPS 4501 Feet  
 North American Datum of 1983  
 Imagery/Basemap Source: 2015 Bing  
 Aerial Imagery; ESRI World Transportation

- Legend**
- Category 1 Moderate Noise Impact Contour
  - Category 1 Severe Noise Impact Contour
  - Category 1 Moderate Noise Impacts
  - Category 1 Severe Noise Impacts
  - Category 2 Moderate Noise Impact Contour
  - Category 2 Severe Noise Impact Contour
  - Category 2 Moderate Noise Impacts
  - Category 2 Severe Noise Impacts
  - Category 3 Moderate Noise Impact Contour
  - Category 3 Severe Noise Impact Contour
  - Category 3 Moderate Noise Impacts
  - Category 3 Severe Noise Impacts
  - CSXT Mileposts
  - Track - Existing
  - Stations
  - Proposed Stations
  - CSXT ROW (County Parcel Data)
  - City/County Boundary

**Appendix I  
 Noise Analysis  
 Area 6B-A Line:  
 Boulevard Station  
 Only**

\\dcis-main\gis\_data\GIS\Projects\0115-46\_VA\_Depot\Rail-Public\Transportation\0239056\_RAPS-4\Dev-Concept\Eng\map\_docs\mxd\0115-46\_WEB\WEB.mxd | Last Updated: 06.15.2017







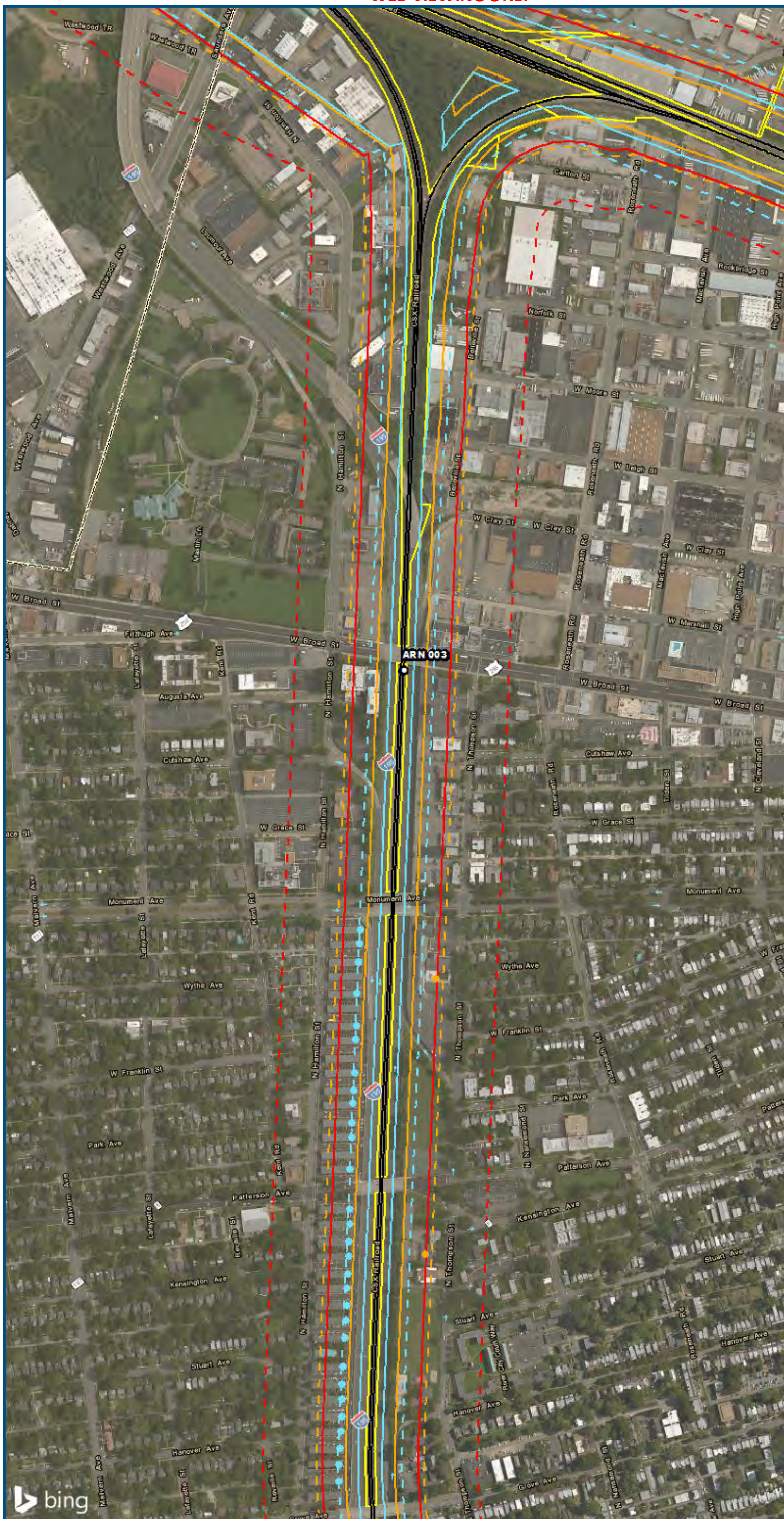
0 250 500  
 Feet  
 1 inch = 500 feet  
 @ 11 x 17 inches  
 Projection: Lambert Conformal Conic  
 State Plane Virginia North FIPS 4501 Feet  
 North American Datum of 1983  
 Imagery/Basemap Source: 2015 Bing  
 Aerial Imagery; ESRI World Transportation

- Legend**
- - - Category 1 Moderate Noise Impact Contour
  - Category 1 Severe Noise Impact Contour
  - Category 1 Moderate Noise Impacts
  - Category 1 Severe Noise Impacts
  - - - Category 2 Moderate Noise Impact Contour
  - Category 2 Severe Noise Impact Contour
  - Category 2 Moderate Noise Impacts
  - Category 2 Severe Noise Impacts
  - - - Category 3 Moderate Noise Impact Contour
  - Category 3 Severe Noise Impact Contour
  - Category 3 Moderate Noise Impacts
  - Category 3 Severe Noise Impacts
  - CSXT Mileposts
  - Track - Existing
  - Stations
  - Proposed Stations
  - CSXT ROW (County Parcel Data)
  - City/County Boundary

**Appendix I  
 Noise Analysis  
 Area 6B-A Line:  
 Boulevard Station  
 Only**

Sheet 10 of 21

\\dcis-main\gis\_data\GIS\Projects\0115-46\_VA\_Depot\RailtoRails-Public\Transportation\02390566\_RAPS-4\AI\Dev-Concept\Eng\map\_docs\mxd\01EIS\Tech\_Reports\Noise\NoiseVib\_Area6B\_A\_Mapbook\_11x17\_WEB.mxd | Last Updated: 06.15.2017

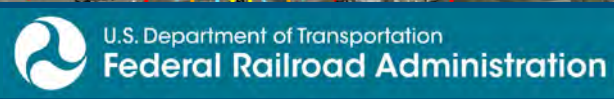


0 250 500  
 Feet  
 1 inch = 500 feet  
 @ 11 x 17 inches  
 Projection: Lambert Conformal Conic  
 State Plane Virginia North FIPS 4501 Feet  
 North American Datum of 1983  
 Imagery/Basemap Source: 2015 Bing  
 Aerial Imagery; ESRI World Transportation

- Legend**
- - - Category 1 Moderate Noise Impact Contour
  - Category 1 Severe Noise Impact Contour
  - Category 1 Moderate Noise Impacts
  - Category 1 Severe Noise Impacts
  - - - Category 2 Moderate Noise Impact Contour
  - Category 2 Severe Noise Impact Contour
  - Category 2 Moderate Noise Impacts
  - Category 2 Severe Noise Impacts
  - - - Category 3 Moderate Noise Impact Contour
  - Category 3 Severe Noise Impact Contour
  - Category 3 Moderate Noise Impacts
  - Category 3 Severe Noise Impacts
  - CSXT Mileposts
  - Track - Existing
  - Stations
  - Proposed Stations
  - CSXT ROW (County Parcel Data)
  - City/County Boundary

**Appendix I  
 Noise Analysis  
 Area 6B-A Line:  
 Boulevard Station  
 Only**

\\dcis-main\gis\_data\GIS\Projects\0115-46\_VA\_Depot\Rail-Public\Transportation\0239056\_RAPS-4\ITDev-Concept\Eng\map\_docs\mxd\01EIS\Tech\_Reports\Noise\Area6B\_Versions\NoiseVib\_Area6B\_Mapbook\_11x17\_WEB.mxd | Last Updated: 06.15.2017



www.DC2RVArail.com



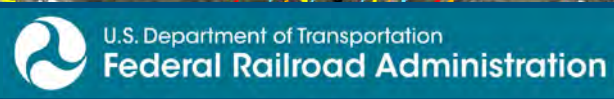


0 250 500  
 Feet  
 1 inch = 500 feet  
 @ 11 x 17 inches  
 Projection: Lambert Conformal Conic  
 State Plane Virginia North FIPS 4501 Feet  
 North American Datum of 1983  
 Imagery/Basemap Source: 2015 Bing  
 Aerial Imagery; ESRI World Transportation

- Legend**
- - - Category 1 Moderate Noise Impact Contour
  - Category 1 Severe Noise Impact Contour
  - Category 1 Moderate Noise Impacts
  - Category 1 Severe Noise Impacts
  - - - Category 2 Moderate Noise Impact Contour
  - Category 2 Severe Noise Impact Contour
  - Category 2 Moderate Noise Impacts
  - Category 2 Severe Noise Impacts
  - - - Category 3 Moderate Noise Impact Contour
  - Category 3 Severe Noise Impact Contour
  - Category 3 Moderate Noise Impacts
  - Category 3 Severe Noise Impacts
  - CSXT Mileposts
  - Track - Existing
  - Stations
  - Proposed Stations
  - CSXT ROW (County Parcel Data)
  - City/County Boundary

**Appendix I  
 Noise Analysis  
 Area 6B-A Line:  
 Boulevard Station  
 Only**

\\dcis-main\gis\_data\GIS\Projects\0115-46\_VA\Depot\Rail-Public\Transportation\0239056\_RAPS-4\ITDev-Concept\Eng\map\_docs\mxd\0115-46\_VA\Depot\Rail-Public\Transportation\0239056\_Versions\NoiseVib\_Area6B\_A\_Mapbook\_11x17\_WEB.mxd | Last Updated: 06.15.2017



[www.DC2RVArail.com](http://www.DC2RVArail.com)

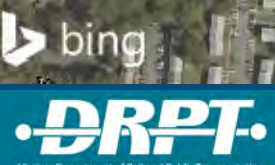




0 250 500  
 Feet  
 1 inch = 500 feet  
 @ 11 x 17 inches  
 Projection: Lambert Conformal Conic  
 State Plane Virginia North FIPS 4501 Feet  
 North American Datum of 1983  
 Imagery/Basemap Source: 2015 Bing  
 Aerial Imagery; ESRI World Transportation

- Legend**
- - - Category 1 Moderate Noise Impact Contour
  - Category 1 Severe Noise Impact Contour
  - Category 1 Moderate Noise Impacts
  - Category 1 Severe Noise Impacts
  - - - Category 2 Moderate Noise Impact Contour
  - Category 2 Severe Noise Impact Contour
  - Category 2 Moderate Noise Impacts
  - Category 2 Severe Noise Impacts
  - - - Category 3 Moderate Noise Impact Contour
  - Category 3 Severe Noise Impact Contour
  - Category 3 Moderate Noise Impacts
  - Category 3 Severe Noise Impacts
  - CSXT Mileposts
  - Track - Existing
  - Stations
  - Proposed Stations
  - CSXT ROW (County Parcel Data)
  - City/County Boundary

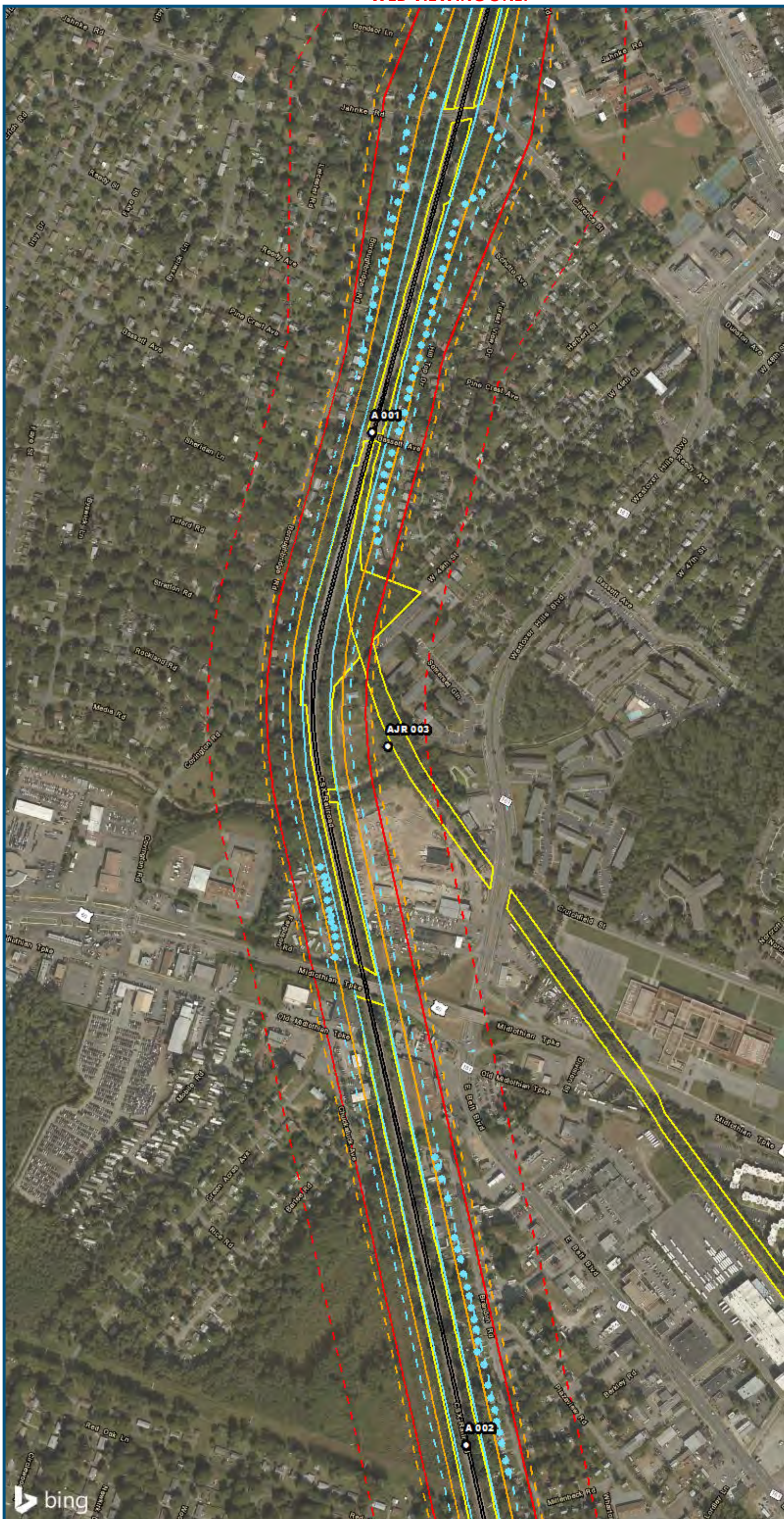
**Appendix I  
 Noise Analysis  
 Area 6B-A Line:  
 Boulevard Station  
 Only**



[www.DC2RVArail.com](http://www.DC2RVArail.com)



\\dcis-main\gis\_data\GIS\Projects\0115-46\_VA\_Dep\toRail\Public\Tech\_Reports\Noise\Area6B\_A\_Line\117\_WEB.mxd | Last Updated: 06.15.2017

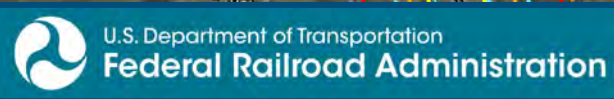


0 250 500  
 Feet  
 1 inch = 500 feet  
 @ 11 x 17 inches  
 Projection: Lambert Conformal Conic  
 State Plane Virginia North FIPS 4501 Feet  
 North American Datum of 1983  
 Imagery/Basemap Source: 2015 Bing  
 Aerial Imagery; ESRI World Transportation

- Legend**
- - - Category 1 Moderate Noise Impact Contour
  - Category 1 Severe Noise Impact Contour
  - Category 1 Moderate Noise Impacts
  - Category 1 Severe Noise Impacts
  - - - Category 2 Moderate Noise Impact Contour
  - Category 2 Severe Noise Impact Contour
  - Category 2 Moderate Noise Impacts
  - Category 2 Severe Noise Impacts
  - - - Category 3 Moderate Noise Impact Contour
  - Category 3 Severe Noise Impact Contour
  - Category 3 Moderate Noise Impacts
  - Category 3 Severe Noise Impacts
  - CSXT Mileposts
  - Track - Existing
  - Stations
  - Proposed Stations
  - CSXT ROW (County Parcel Data)
  - City/County Boundary

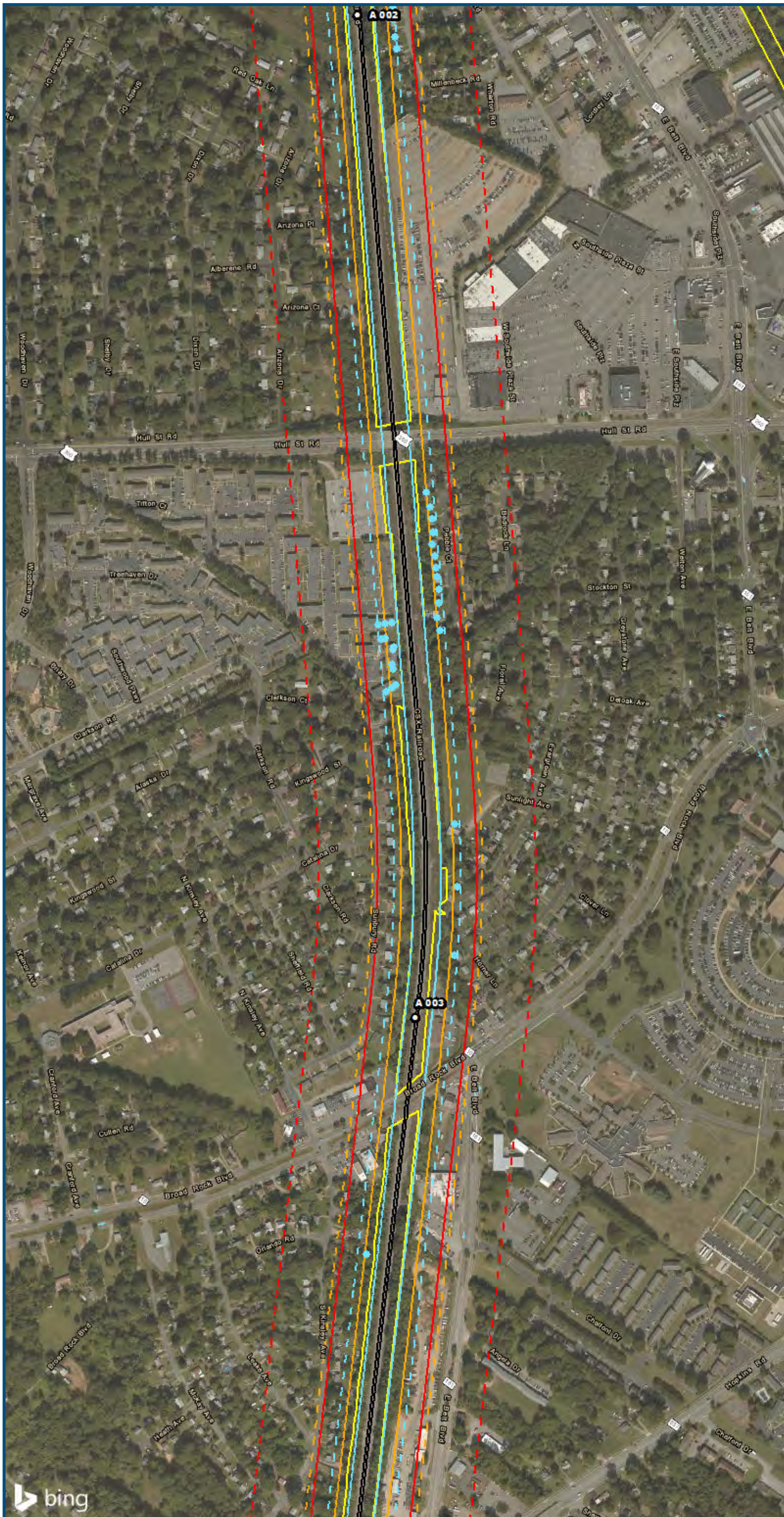
**Appendix I  
 Noise Analysis  
 Area 6B-A Line:  
 Boulevard Station  
 Only**

\\dcis-main\gis\_data\GIS\Projects\0115-46\_VA\Depot\Rail-Public\Tech\_Reports\Noise\Area6B\_Area6B\_A\Mapbook\_11x17\_WEB.mxd | Last Updated: 06.15.2017



[www.DC2RVArail.com](http://www.DC2RVArail.com)



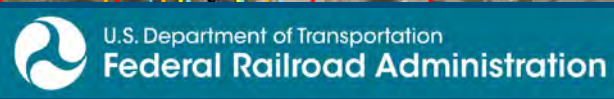
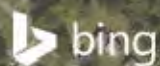


0 250 500  
 Feet  
 1 inch = 500 feet  
 @ 11 x 17 inches  
 Projection: Lambert Conformal Conic  
 State Plane Virginia North FIPS 4501 Feet  
 North American Datum of 1983  
 Imagery/Basemap Source: 2015 Bing  
 Aerial Imagery; ESRI World Transportation

- Legend**
- - - Category 1 Moderate Noise Impact Contour
  - Category 1 Severe Noise Impact Contour
  - Category 1 Moderate Noise Impacts
  - Category 1 Severe Noise Impacts
  - - - Category 2 Moderate Noise Impact Contour
  - Category 2 Severe Noise Impact Contour
  - Category 2 Moderate Noise Impacts
  - Category 2 Severe Noise Impacts
  - - - Category 3 Moderate Noise Impact Contour
  - Category 3 Severe Noise Impact Contour
  - Category 3 Moderate Noise Impacts
  - Category 3 Severe Noise Impacts
  - CSXT Mileposts
  - Track - Existing
  - Stations
  - Proposed Stations
  - CSXT ROW (County Parcel Data)
  - City/County Boundary

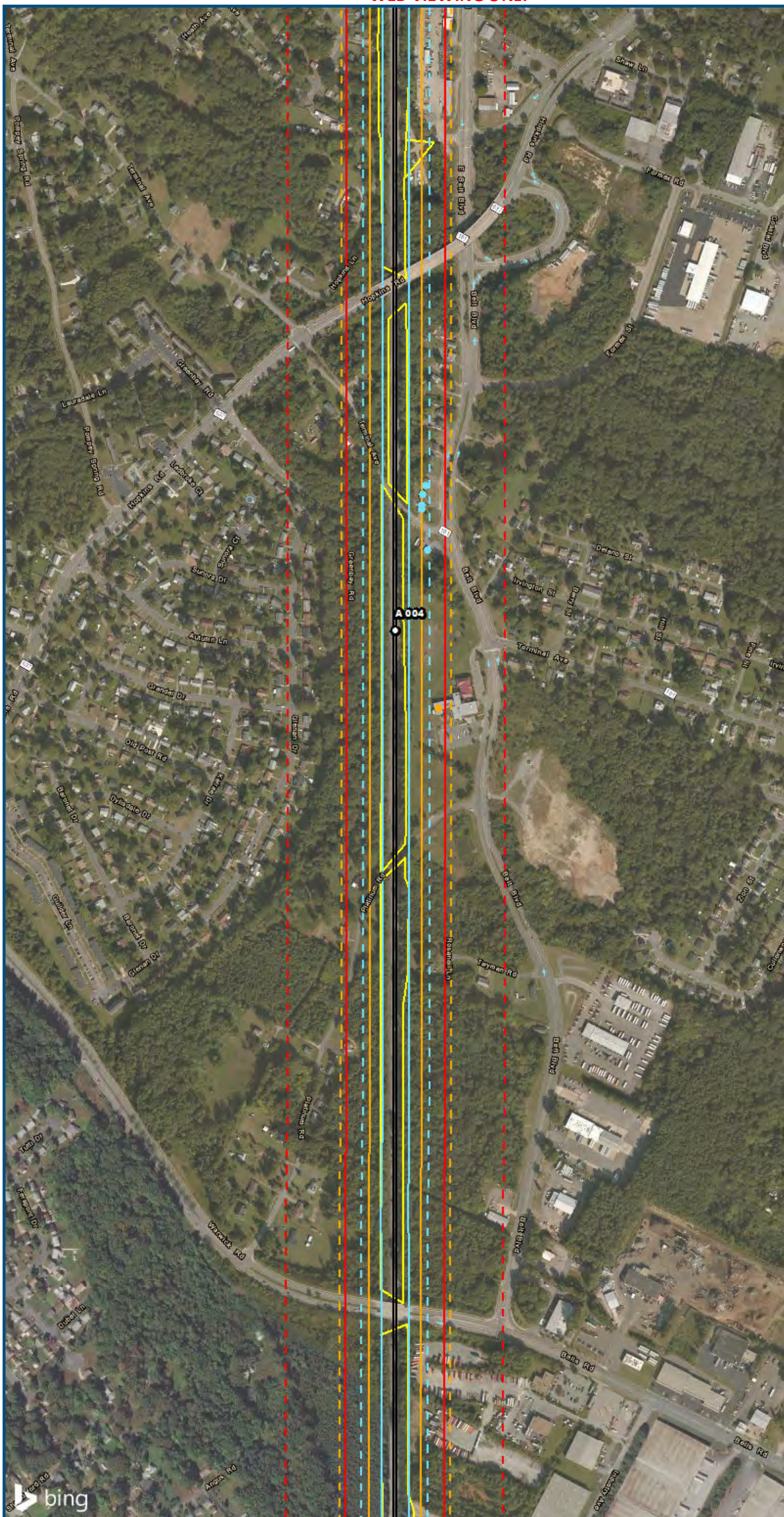
**Appendix I  
 Noise Analysis  
 Area 6B-A Line:  
 Boulevard Station  
 Only**

V:\GIS\main\gis\_data\GIS\Projects\0115-46\_VA\Depot\Railis-Public\T transportation\0239056\_RAPS-4\ITDev-Concept\Eng\map\_docs\mxd\01EIS\Tech\_Reports\Noise\Noise and Vibration\Map\_Versions\NoiseVib\_Area6B\_A\_Line.mxd | Last Updated: 06.15.2017



[www.DC2RVArail.com](http://www.DC2RVArail.com)



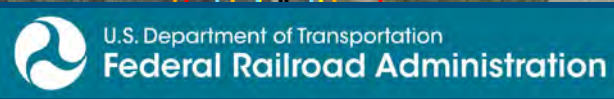


0 250 500  
 Feet  
 1 inch = 500 feet  
 @ 11 x 17 inches  
 Projection: Lambert Conformal Conic  
 State: Plane Virginia North FIPS 4501 Feet  
 North American Datum of 1983  
 Imagery/Basemap Source: 2015 Bing  
 Aerial Imagery; ESRI World Transportation

- Legend**
- - - Category 1 Moderate Noise Impact Contour
  - Category 1 Severe Noise Impact Contour
  - Category 1 Moderate Noise Impacts
  - Category 1 Severe Noise Impacts
  - - - Category 2 Moderate Noise Impact Contour
  - Category 2 Severe Noise Impact Contour
  - Category 2 Moderate Noise Impacts
  - Category 2 Severe Noise Impacts
  - - - Category 3 Moderate Noise Impact Contour
  - Category 3 Severe Noise Impact Contour
  - Category 3 Moderate Noise Impacts
  - Category 3 Severe Noise Impacts
  - CSXT Mileposts
  - Track - Existing
  - Stations
  - Proposed Stations
  - CSXT ROW (County Parcel Data)
  - City/County Boundary

**Appendix I  
 Noise Analysis  
 Area 6B-A Line:  
 Boulevard Station  
 Only**

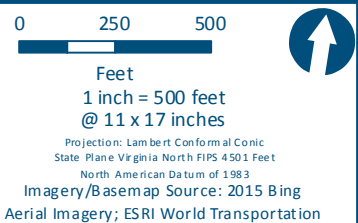
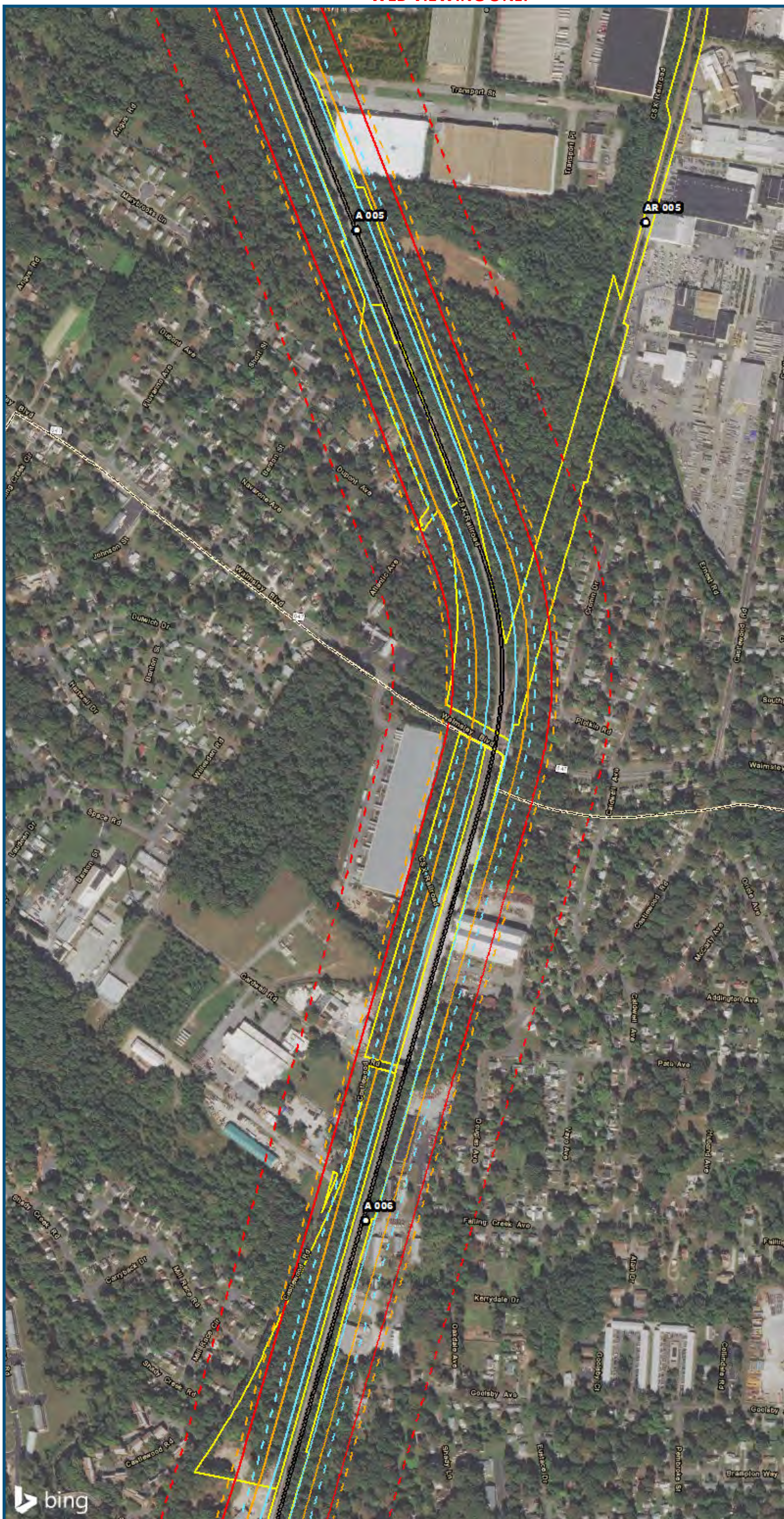
\\dcis-main\gis\_data\GIS\Projects\0115-46\_VA\_Depot\RailtoRich-Public\Transportation\02309056\_RAPS-4A\Dev-Concept\Eng\map\_docs\mxd\01EIS\Tech\_Reports\Noise\Noise and Vibration\Map\_Versions\NoiseVib\_Area6B\_A\_Mapbook\_11x17\_WEB.mxd | Last Updated: 06.15.2017



www.DC2RVArail.com



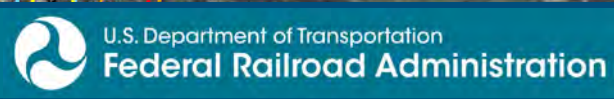




- Legend**
- Category 1 Moderate Noise Impact Contour
  - Category 1 Severe Noise Impact Contour
  - Category 1 Moderate Noise Impacts
  - Category 1 Severe Noise Impacts
  - Category 2 Moderate Noise Impact Contour
  - Category 2 Severe Noise Impact Contour
  - Category 2 Moderate Noise Impacts
  - Category 2 Severe Noise Impacts
  - Category 3 Moderate Noise Impact Contour
  - Category 3 Severe Noise Impact Contour
  - Category 3 Moderate Noise Impacts
  - Category 3 Severe Noise Impacts
  - CSXT Mileposts
  - Track - Existing
  - Stations
  - Proposed Stations
  - CSXT ROW (County Parcel Data)
  - City/County Boundary

**Appendix I  
Noise Analysis  
Area 6B-A Line:  
Boulevard Station  
Only**

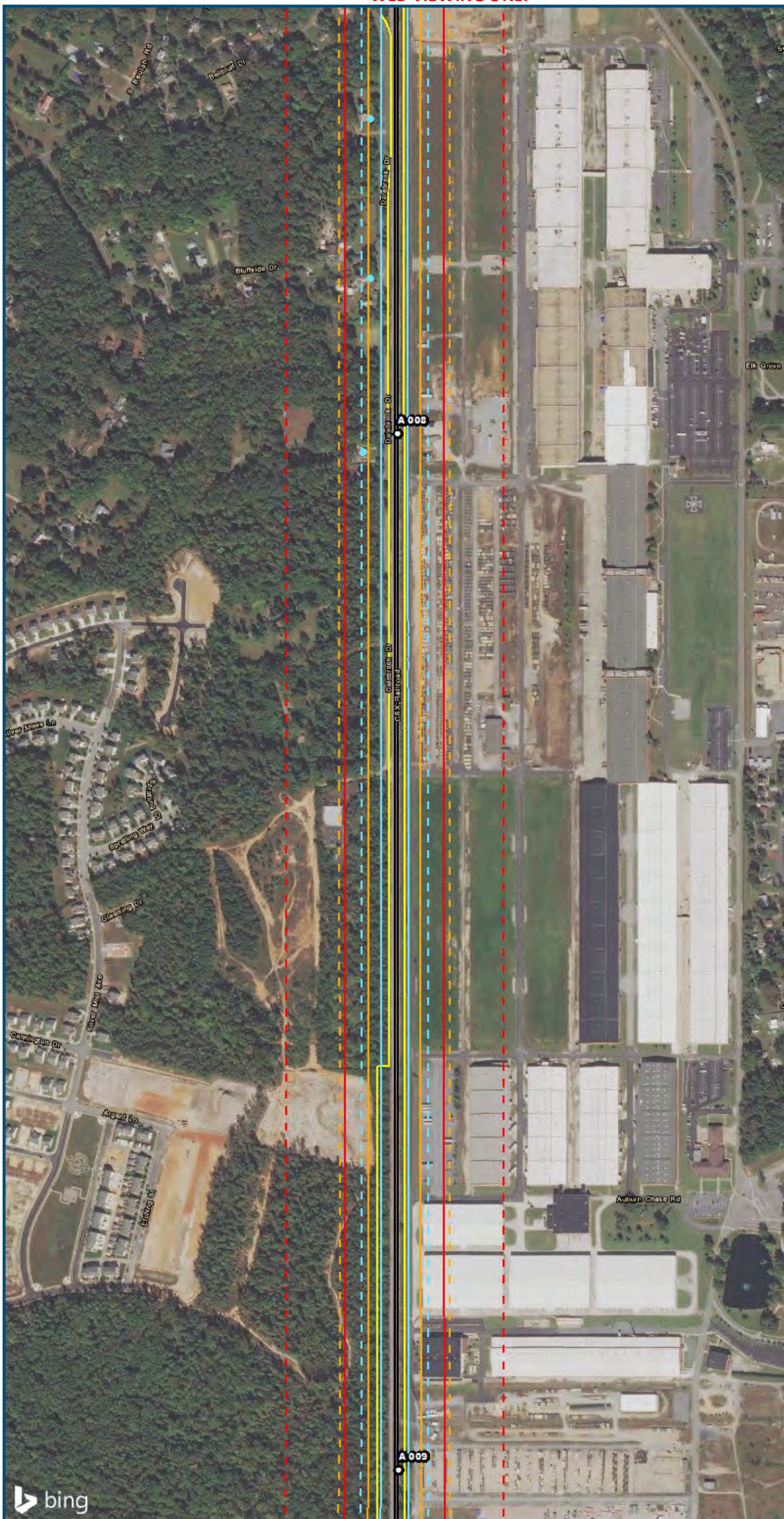
\\dcis-main\gis\_data\GIS\Projects\0115-46\_VA\_Depot\Rail-Public\T-transportation\0239056\_RAPS-4\IT-Dev-Concept\Eng\map\_docs\mxd\01EIS\Tech\_Reports\Noise\Noise and Vibration\Map\_Versions\NoiseVib\_Area6B\_A\_Mapbook\_11x17\_WEB.mxd | Last Updated: 06.15.2017



[www.DC2RVArail.com](http://www.DC2RVArail.com)





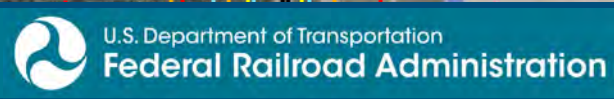


0 250 500  
 Feet  
 1 inch = 500 feet  
 @ 11 x 17 inches  
 Projection: Lambert Conformal Conic  
 State Plane Virginia North FIPS 4501 Feet  
 North American Datum of 1983  
 Imagery/Basemap Source: 2015 Bing  
 Aerial Imagery; ESRI World Transportation

- Legend**
- - - Category 1 Moderate Noise Impact Contour
  - Category 1 Severe Noise Impact Contour
  - Category 1 Moderate Noise Impacts
  - Category 1 Severe Noise Impacts
  - - - Category 2 Moderate Noise Impact Contour
  - Category 2 Severe Noise Impact Contour
  - Category 2 Moderate Noise Impacts
  - Category 2 Severe Noise Impacts
  - - - Category 3 Moderate Noise Impact Contour
  - Category 3 Severe Noise Impact Contour
  - Category 3 Moderate Noise Impacts
  - Category 3 Severe Noise Impacts
  - CSXT Mileposts
  - Track - Existing
  - Stations
  - Proposed Stations
  - CSXT ROW (County Parcel Data)
  - City/County Boundary

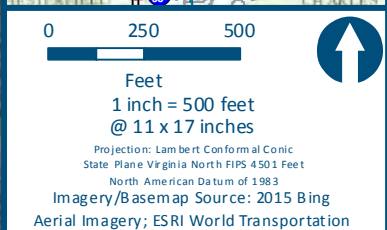
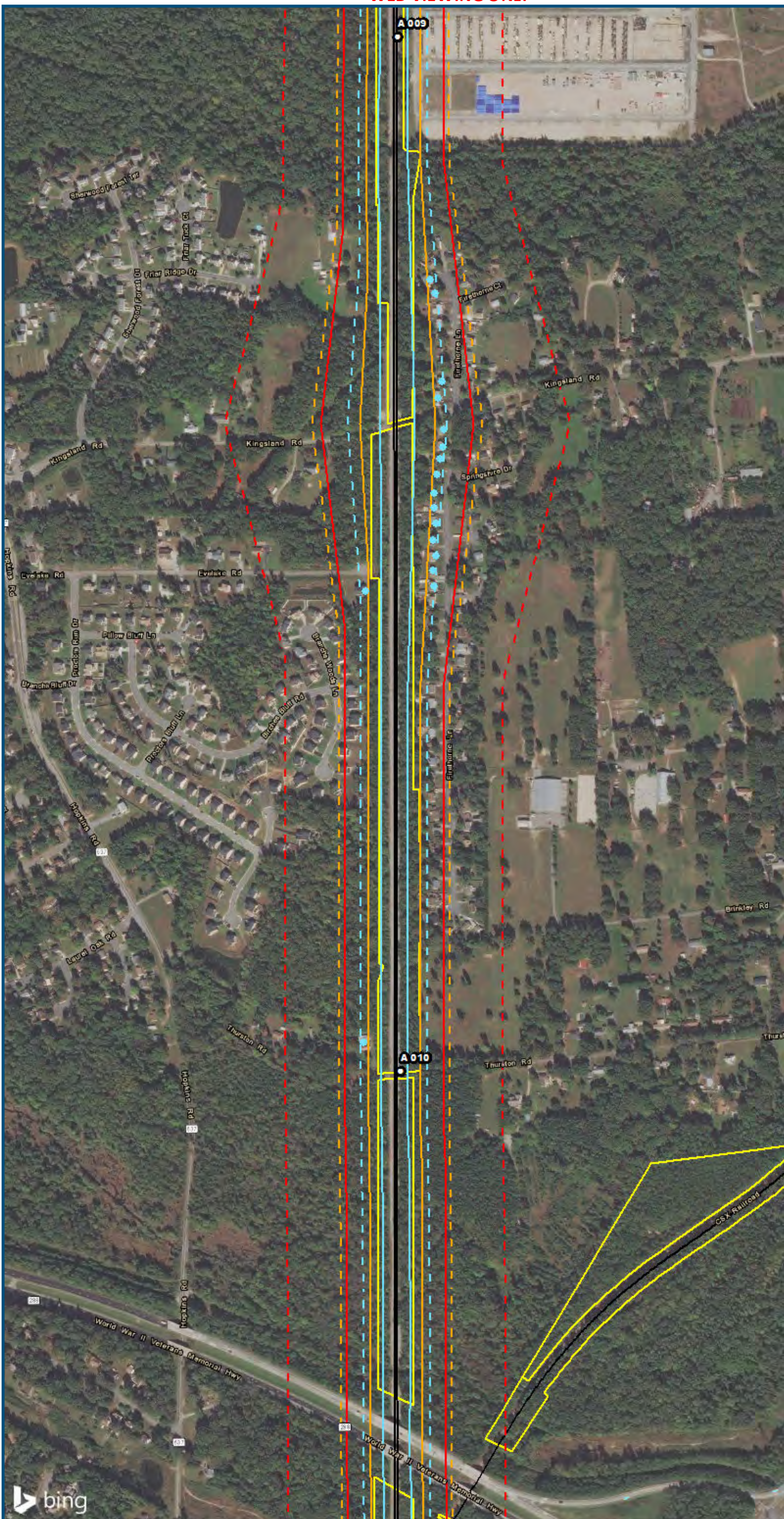
**Appendix I  
 Noise Analysis  
 Area 6B-A Line:  
 Boulevard Station  
 Only**

\\dcis-main\gis\_data\GIS\Projects\0115-46\_VA\_Depot\Rail-Public\Transportation\02390566\_VA\_Depot\Rail-Public\Transportation\02390566\_RAPS-4\IT\Dev-Concept\Eng\map\_docs\mxd\0115-46\_VA\_Depot\Rail-Public\Transportation\02390566\_Versions\NoiseVib\_Area6B\_A\_Mapbook\_11x17\_WEB.mxd | Last Updated: 06.15.2017



[www.DC2RVArail.com](http://www.DC2RVArail.com)

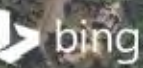


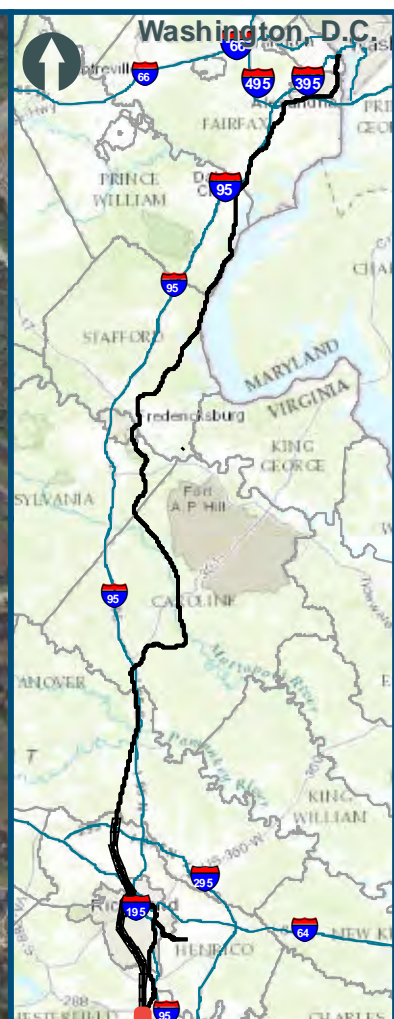
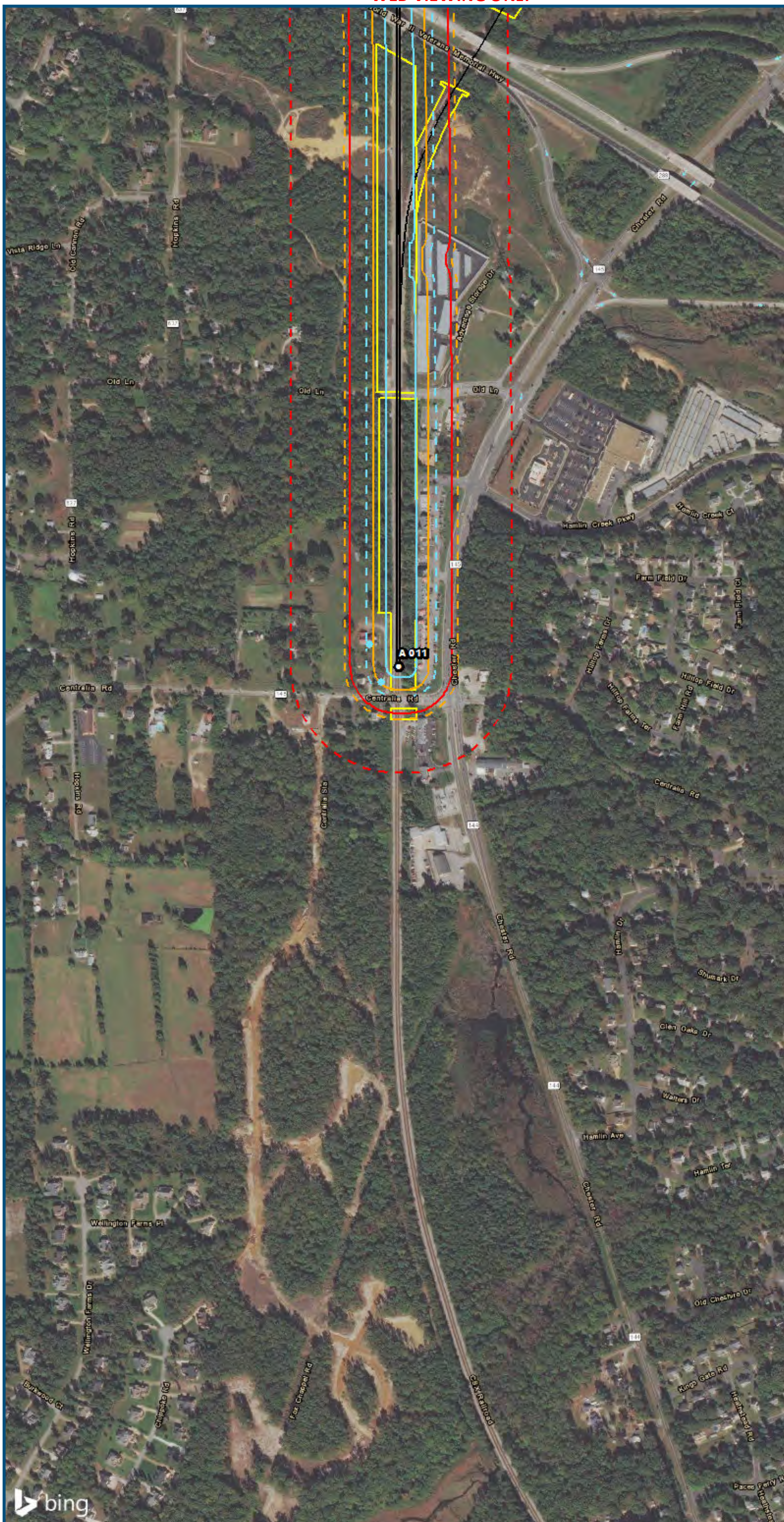


**Legend**

- Category 1 Moderate Noise Impact Contour
- Category 1 Severe Noise Impact Contour
- Category 1 Moderate Noise Impacts
- Category 1 Severe Noise Impacts
- Category 2 Moderate Noise Impact Contour
- Category 2 Severe Noise Impact Contour
- Category 2 Moderate Noise Impacts
- Category 2 Severe Noise Impacts
- Category 3 Moderate Noise Impact Contour
- Category 3 Severe Noise Impact Contour
- Category 3 Moderate Noise Impacts
- Category 3 Severe Noise Impacts
- CSXT Mileposts
- Track - Existing
- Stations
- Proposed Stations
- CSXT ROW (County Parcel Data)
- City/County Boundary

**Appendix I  
Noise Analysis  
Area 6B-A Line:  
Boulevard Station  
Only**





0 250 500  
 Feet  
 1 inch = 500 feet  
 @ 11 x 17 inches  
 Projection: Lambert Conformal Conic  
 State Plane Virginia North FIPS 4501 Feet  
 North American Datum of 1983  
 Imagery/Basemap Source: 2015 Bing  
 Aerial Imagery; ESRI World Transportation

- Legend**
- - - Category 1 Moderate Noise Impact Contour
  - Category 1 Severe Noise Impact Contour
  - Category 1 Moderate Noise Impacts
  - Category 1 Severe Noise Impacts
  - - - Category 2 Moderate Noise Impact Contour
  - Category 2 Severe Noise Impact Contour
  - Category 2 Moderate Noise Impacts
  - Category 2 Severe Noise Impacts
  - - - Category 3 Moderate Noise Impact Contour
  - Category 3 Severe Noise Impact Contour
  - Category 3 Moderate Noise Impacts
  - Category 3 Severe Noise Impacts
  - CSXT Mileposts
  - Track - Existing
  - Stations
  - Proposed Stations
  - CSXT ROW (County Parcel Data)
  - City/County Boundary

**Appendix I  
 Noise Analysis  
 Area 6B-A Line:  
 Boulevard Station  
 Only**

\\dcis-main\gis\_data\GIS\Projects\0115-46\_VA\Depot\Rail-Public\T-transportation\0239056\_RAPS-4\IT-Dev-Concept\Eng\map\_docs\mxd\01EIS\Tech\_Reports\Noise\Noise and Vibration\Map\_Versions\NoiseVib\_Area6B\_A\_Mapbook\_11x17\_WEB.mxd | Last Updated: 06.15.2017



[www.DC2RVArail.com](http://www.DC2RVArail.com)

