

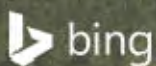


0 250 500  
 Feet  
 1 inch = 500 feet  
 @ 11 x 17 inches  
 Projection: Lambert Conformal Conic  
 State Plane Virginia North FIPS 4501 Feet  
 North American Datum of 1983  
 Imagery/Basemap Source: 2015 Bing  
 Aerial Imagery; ESRI World Transportation

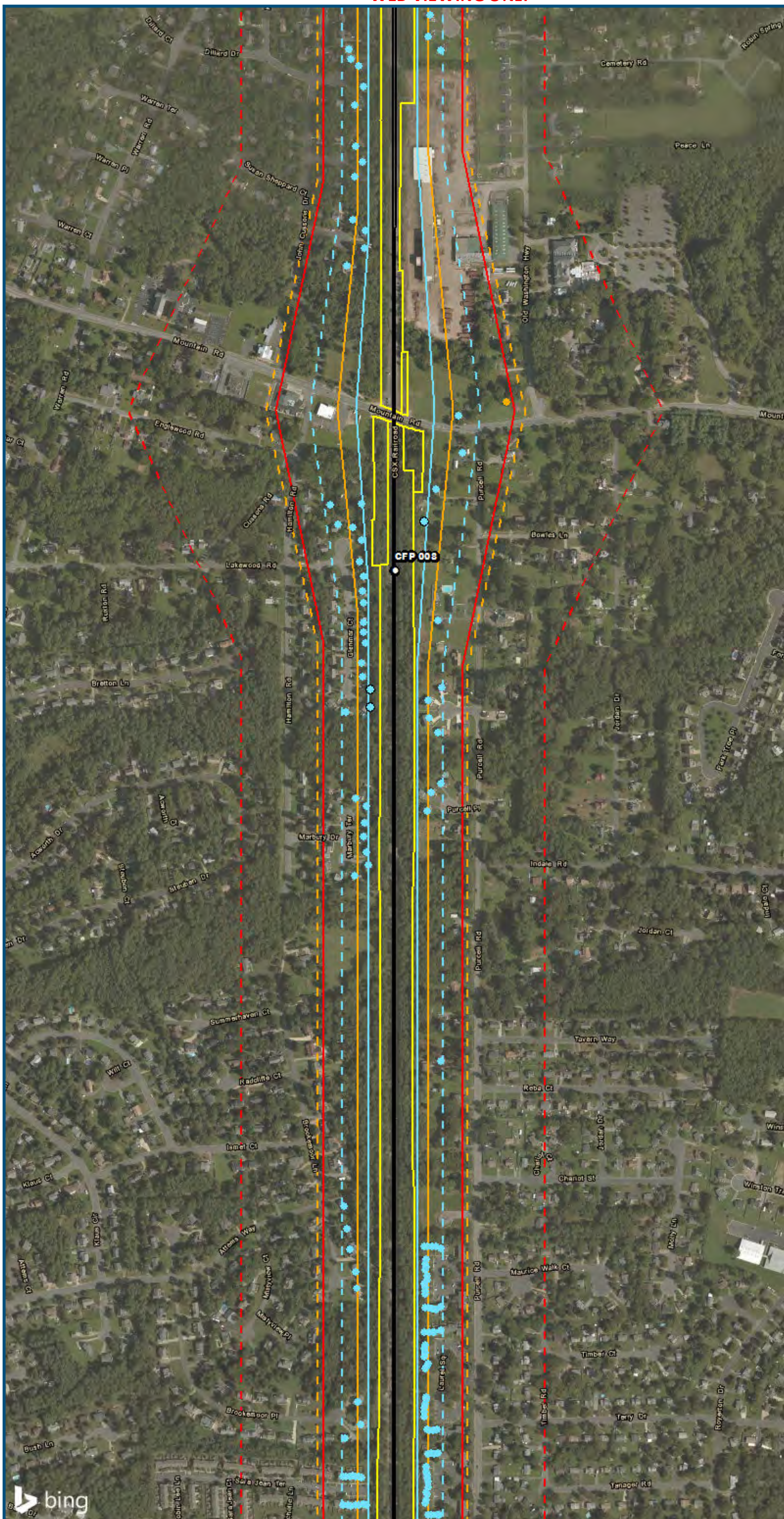
**Legend**

- Category 1 Moderate Noise Impact Contour
- Category 1 Severe Noise Impact Contour
- Category 1 Moderate Noise Impacts
- Category 1 Severe Noise Impacts
- Category 2 Moderate Noise Impact Contour
- Category 2 Severe Noise Impact Contour
- Category 2 Moderate Noise Impacts
- Category 2 Severe Noise Impacts
- Category 3 Moderate Noise Impact Contour
- Category 3 Severe Noise Impact Contour
- Category 3 Moderate Noise Impacts
- Category 3 Severe Noise Impacts
- CSXT Mileposts
- Track - Existing
- Stations
- Proposed Stations
- CSXT ROW (County Parcel Data)
- City/County Boundary

**Appendix L  
 Noise Analysis  
 Area 6B-S Line:  
 Boulevard  
 Station Only**



\\dcis-main\gis\_data\GIS\Projects\0115-46\_VA\Depot\Rail-Public\T-transportation\0239056\_RAPS-4\IT-Dev-Concept\Eng\map\_docs\mxd\01EIS\Tech\_Reports\Noise\NoiseVib\_Area6BS\_Mapbook\_11x17\_WEB.mxd | Last Updated: 06.15.2017



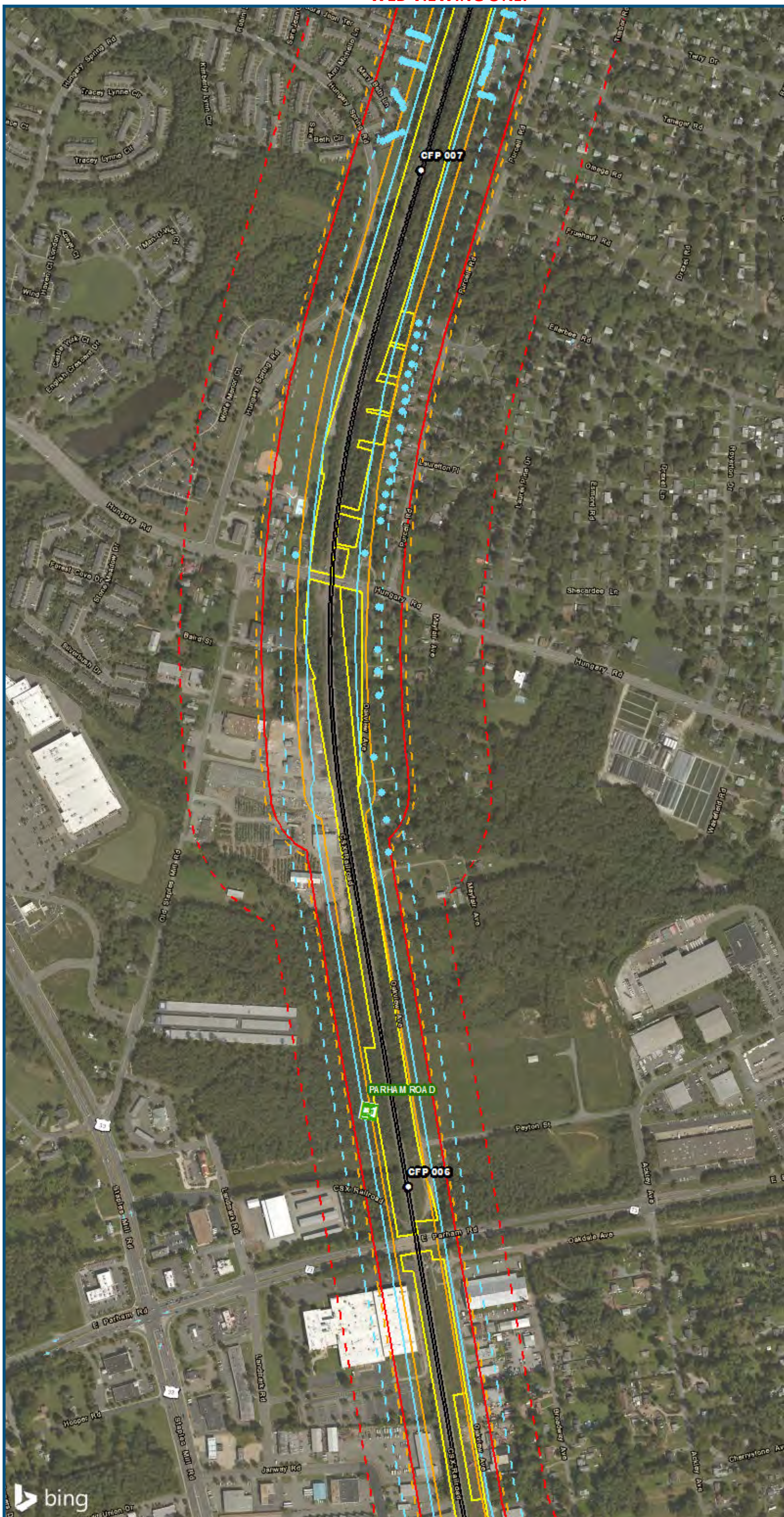
0 250 500  
 Feet  
 1 inch = 500 feet  
 @ 11 x 17 inches  
 Projection: Lambert Conformal Conic  
 State Plane Virginia North FIPS 4501 Feet  
 North American Datum of 1983  
 Imagery/Basemap Source: 2015 Bing  
 Aerial Imagery; ESRI World Transportation

**Legend**

- Category 1 Moderate Noise Impact Contour
- Category 1 Severe Noise Impact Contour
- Category 1 Moderate Noise Impacts
- Category 1 Severe Noise Impacts
- Category 2 Moderate Noise Impact Contour
- Category 2 Severe Noise Impact Contour
- Category 2 Moderate Noise Impacts
- Category 2 Severe Noise Impacts
- Category 3 Moderate Noise Impact Contour
- Category 3 Severe Noise Impact Contour
- Category 3 Moderate Noise Impacts
- Category 3 Severe Noise Impacts
- CSXT Mileposts
- Track - Existing
- Stations
- Proposed Stations
- CSXT ROW (County Parcel Data)
- City/County Boundary

**Appendix L  
 Noise Analysis  
 Area 6B-S Line:  
 Boulevard  
 Station Only**

\\dcis-main\gis\_data\GIS\Projects\0115-46\_VA\_Depot\Rail-Public\Transportation\0239056\_RAPS-4\IT\Dev-Concept\Eng\map\_docs\mxd\0239056\_Versions\NoiseVib\_Area6BS\_Mapbook\_11x17\_WEB.mxd | Last Updated: 06.15.2017



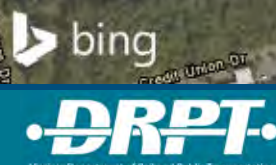
0 250 500  
 Feet  
 1 inch = 500 feet  
 @ 11 x 17 inches  
 Projection: Lambert Conformal Conic  
 State Plane Virginia North FIPS 4501 Feet  
 North American Datum of 1983  
 Imagery/Basemap Source: 2015 Bing  
 Aerial Imagery; ESRI World Transportation

**Legend**

- Category 1 Moderate Noise Impact Contour
- Category 1 Severe Noise Impact Contour
- Category 1 Moderate Noise Impacts
- Category 1 Severe Noise Impacts
- Category 2 Moderate Noise Impact Contour
- Category 2 Severe Noise Impact Contour
- Category 2 Moderate Noise Impacts
- Category 2 Severe Noise Impacts
- Category 3 Moderate Noise Impact Contour
- Category 3 Severe Noise Impact Contour
- Category 3 Moderate Noise Impacts
- Category 3 Severe Noise Impacts
- CSXT Mileposts
- Track - Existing
- Stations
- Proposed Stations
- CSXT ROW (County Parcel Data)
- City/County Boundary

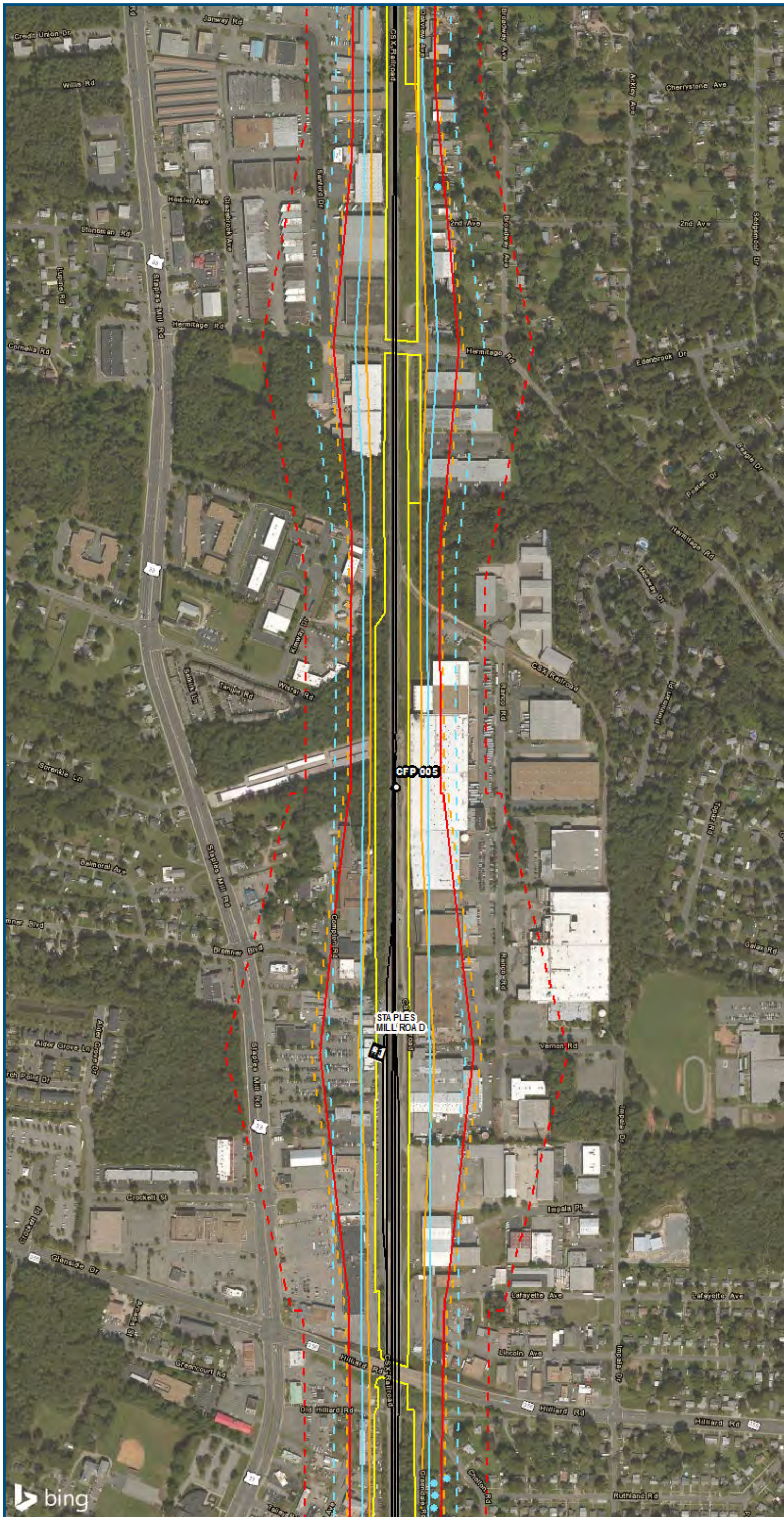
**Appendix L  
 Noise Analysis  
 Area 6B-S Line:  
 Boulevard  
 Station Only**

\\dcis-main\gis\_data\GIS\Projects\0115-45\_VA\_Depot\Rail-Public\Tech\_Reports\Noise\Map\Area6BS\_Mapbook\_11x17\_WEB.mxd | Last Updated: 06.15.2017



[www.DC2RVArail.com](http://www.DC2RVArail.com)





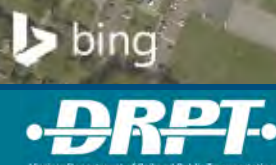
0 250 500  
 Feet  
 1 inch = 500 feet  
 @ 11 x 17 inches  
 Projection: Lambert Conformal Conic  
 State Plane Virginia North FIPS 4501 Feet  
 North American Datum of 1983  
 Imagery/Basemap Source: 2015 Bing  
 Aerial Imagery; ESRI World Transportation

**Legend**

- Category 1 Moderate Noise Impact Contour
- Category 1 Severe Noise Impact Contour
- Category 1 Moderate Noise Impacts
- Category 1 Severe Noise Impacts
- Category 2 Moderate Noise Impact Contour
- Category 2 Severe Noise Impact Contour
- Category 2 Moderate Noise Impacts
- Category 2 Severe Noise Impacts
- Category 3 Moderate Noise Impact Contour
- Category 3 Severe Noise Impact Contour
- Category 3 Moderate Noise Impacts
- Category 3 Severe Noise Impacts
- CSXT Mileposts
- Track - Existing
- Stations
- Proposed Stations
- CSXT ROW (County Parcel Data)
- City/County Boundary

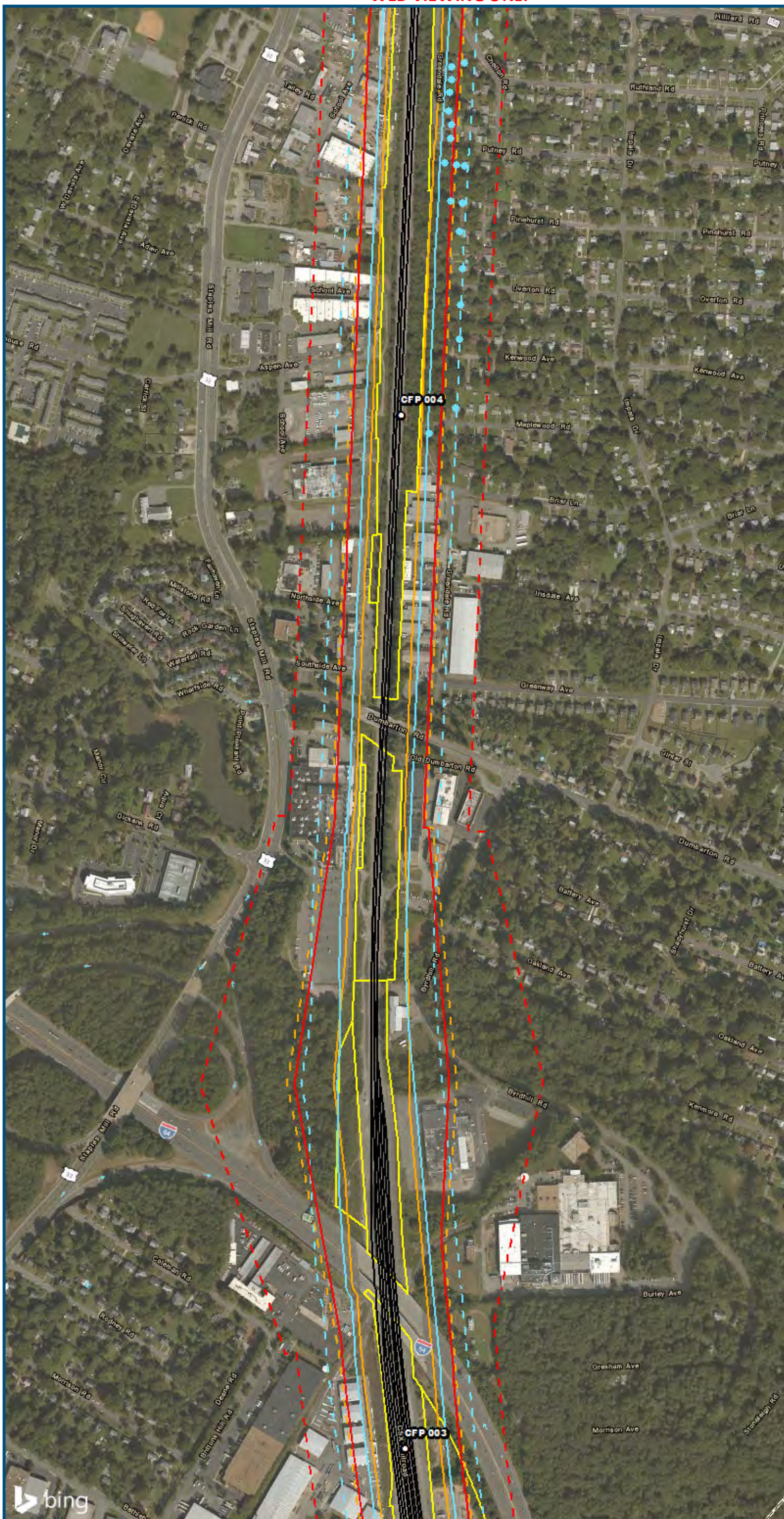
**Appendix L  
 Noise Analysis  
 Area 6B-S Line:  
 Boulevard  
 Station Only**

\\dcis-main\gis\_data\GIS\Projects\0115-46\_VA\_Depot\Rail-Public\Tech\_Reports\Noise\NoiseVib\_Area6BS\_Mapbook\_11x17\_WEB.mxd | Last Updated: 06.15.2017



www.DC2RVArail.com



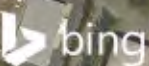


0 250 500  
 Feet  
 1 inch = 500 feet  
 @ 11 x 17 inches  
 Projection: Lambert Conformal Conic  
 State: Plane Virginia North FIPS 4501 Feet  
 North American Datum of 1983  
 Imagery/Basemap Source: 2015 Bing  
 Aerial Imagery; ESRI World Transportation

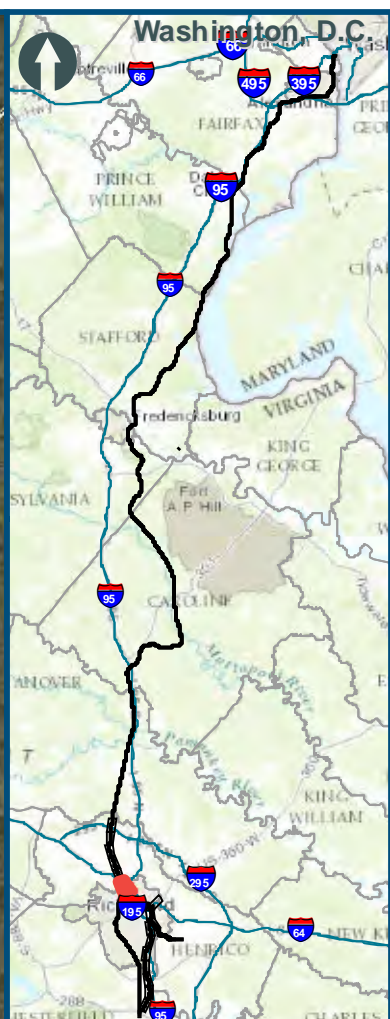
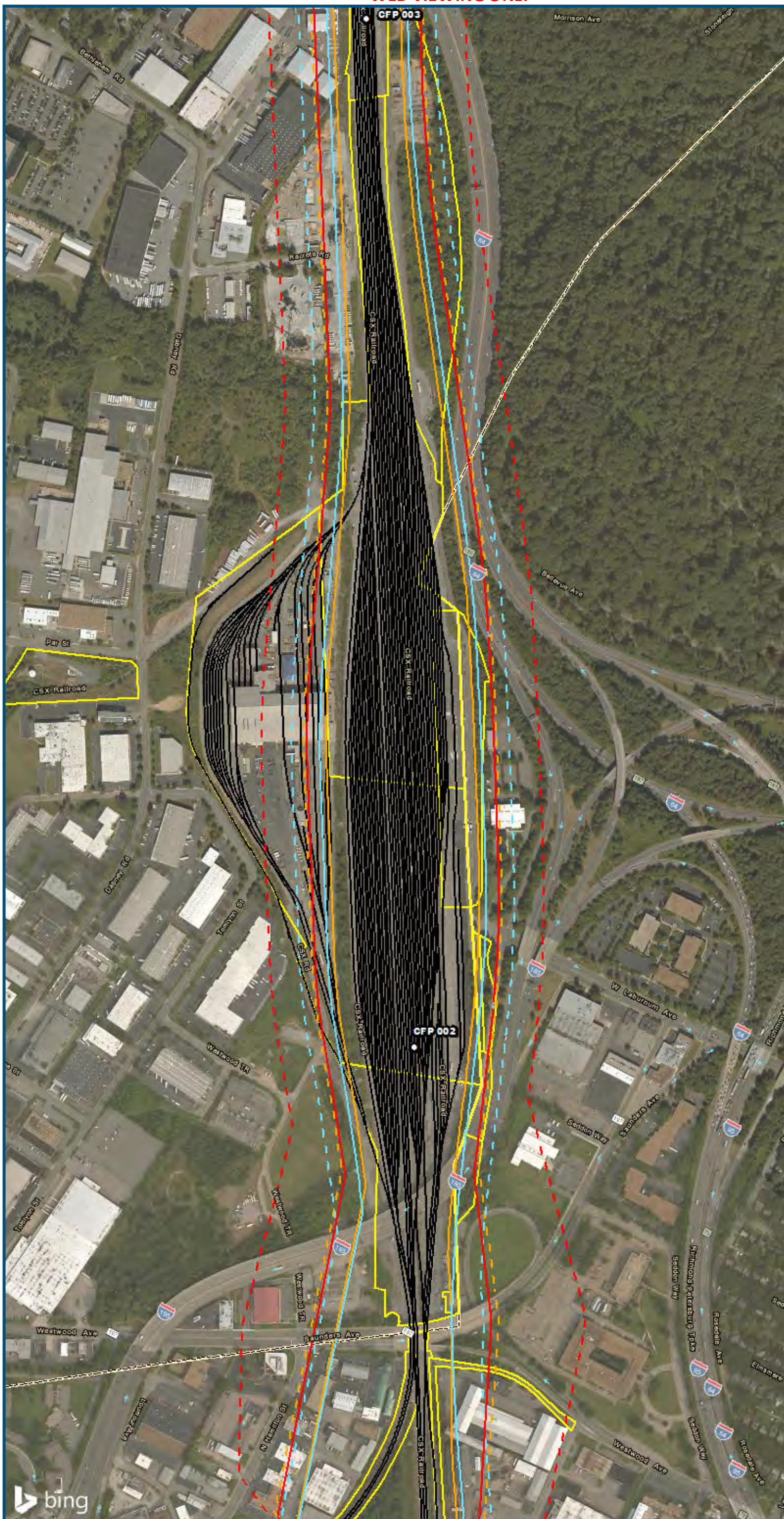
**Legend**

- Category 1 Moderate Noise Impact Contour
- Category 1 Severe Noise Impact Contour
- Category 1 Moderate Noise Impacts
- Category 1 Severe Noise Impacts
- Category 2 Moderate Noise Impact Contour
- Category 2 Severe Noise Impact Contour
- Category 2 Moderate Noise Impacts
- Category 2 Severe Noise Impacts
- Category 3 Moderate Noise Impact Contour
- Category 3 Severe Noise Impact Contour
- Category 3 Moderate Noise Impacts
- Category 3 Severe Noise Impacts
- CSXT Mileposts
- Track - Existing
- Stations
- Proposed Stations
- CSXT ROW (County Parcel Data)
- City/County Boundary

**Appendix L  
 Noise Analysis  
 Area 6B-S Line:  
 Boulevard  
 Station Only**



\\dcis-main\gis\_data\GIS\Projects\0115-46\_VA\Depot\Rail-Public\T\Transportation\0239056\_RAPS-4\IT\Dev-Concept\Eng\map\_docs\mxd\01EIS\Tech\_Reports\Noise\Noise and Vibration\Map\_Versions\NoiseVib\_Area6BS\_Mapbook\_11x17\_WEB.mxd | Last Updated: 06.15.2017



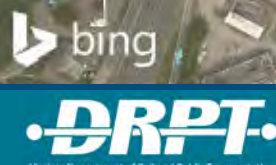
0 250 500  
 Feet  
 1 inch = 500 feet  
 @ 11 x 17 inches  
 Projection: Lambert Conformal Conic  
 State Plane Virginia North FIPS 4501 Feet  
 North American Datum of 1983  
 Imagery/Basemap Source: 2015 Bing  
 Aerial Imagery; ESRI World Transportation

**Legend**

- Category 1 Moderate Noise Impact Contour
- Category 1 Severe Noise Impact Contour
- Category 1 Moderate Noise Impacts
- Category 1 Severe Noise Impacts
- Category 2 Moderate Noise Impact Contour
- Category 2 Severe Noise Impact Contour
- Category 2 Moderate Noise Impacts
- Category 2 Severe Noise Impacts
- Category 3 Moderate Noise Impact Contour
- Category 3 Severe Noise Impact Contour
- Category 3 Moderate Noise Impacts
- Category 3 Severe Noise Impacts
- CSXT Mileposts
- Track - Existing
- Stations
- Proposed Stations
- CSXT ROW (County Parcel Data)
- City/County Boundary

**Appendix L  
 Noise Analysis  
 Area 6B-S Line:  
 Boulevard  
 Station Only**

\\dcis-main\gis\_data\GIS\Projects\0115-45\_VA Dept of Rail\Public\Tech Reports\Noise and Vibration\Mapbook\_11x17\_WEB.mxd | Last Updated: 06.15.2017



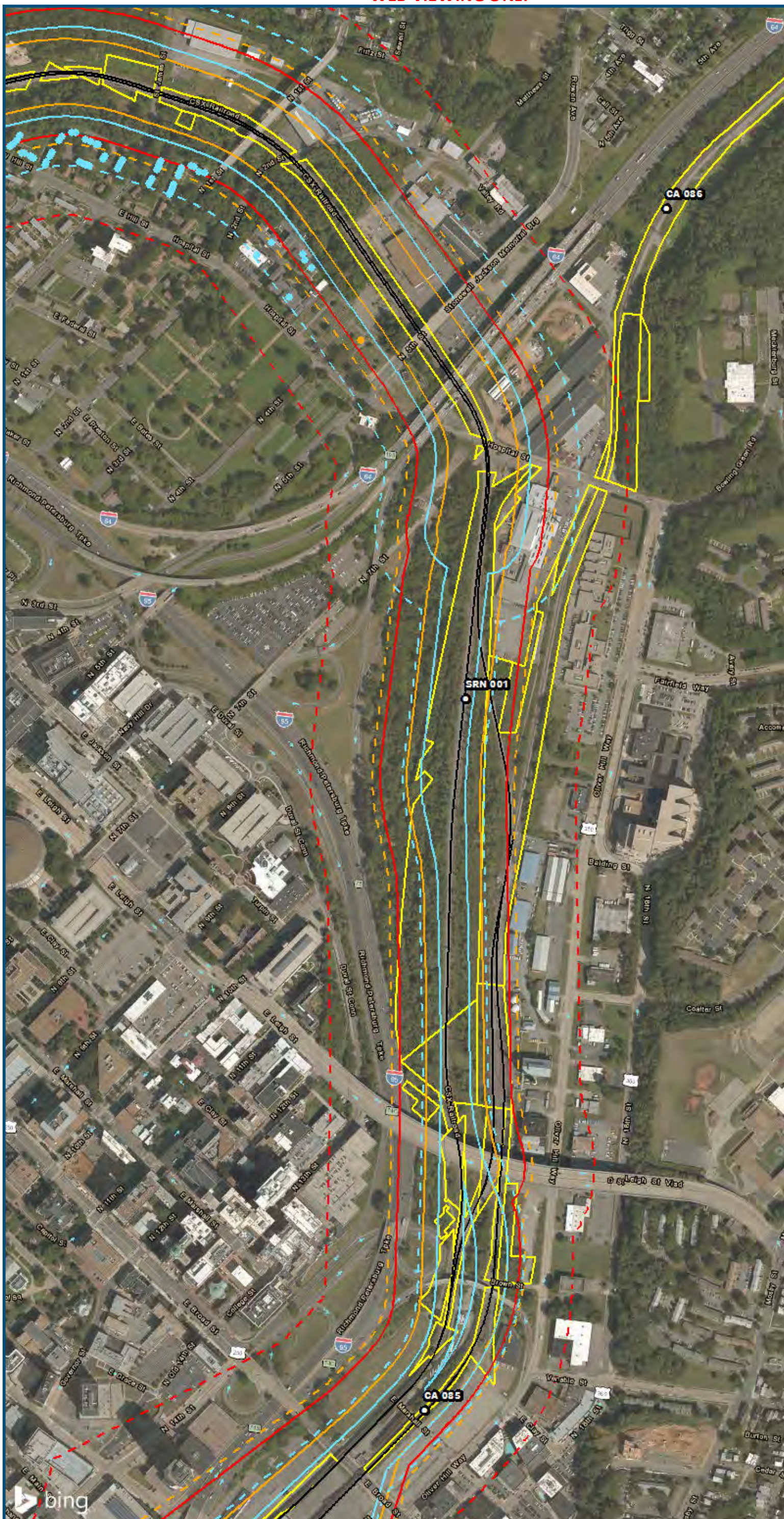
[www.DC2RVArail.com](http://www.DC2RVArail.com)











0 250 500  
 Feet  
 1 inch = 500 feet  
 @ 11 x 17 inches  
 Projection: Lambert Conformal Conic  
 State Plane Virginia North FIPS 4501 Feet  
 North American Datum of 1983  
 Imagery/Basemap Source: 2015 Bing  
 Aerial Imagery; ESRI World Transportation

**Legend**

- Category 1 Moderate Noise Impact Contour
- Category 1 Severe Noise Impact Contour
- Category 1 Moderate Noise Impacts
- Category 1 Severe Noise Impacts
- Category 2 Moderate Noise Impact Contour
- Category 2 Severe Noise Impact Contour
- Category 2 Moderate Noise Impacts
- Category 2 Severe Noise Impacts
- Category 3 Moderate Noise Impact Contour
- Category 3 Severe Noise Impact Contour
- Category 3 Moderate Noise Impacts
- Category 3 Severe Noise Impacts
- CSXT Mileposts
- Track - Existing
- Stations
- Proposed Stations
- CSXT ROW (County Parcel Data)
- City/County Boundary

**Appendix L  
 Noise Analysis  
 Area 6B-S Line:  
 Boulevard  
 Station Only**

\\dcis-main\gis\_data\GIS\Projects\0115-45\_VA\_Depot\Rail-Public\GIS\Tech\_Reports\Noise\Area6BS\_Mapbook\_11x17\_WEB.mxd | Last Updated: 06.15.2017

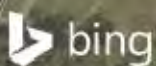


0 250 500  
 Feet  
 1 inch = 500 feet  
 @ 11 x 17 inches  
 Projection: Lambert Conformal Conic  
 State Plane Virginia North FIPS 4501 Feet  
 North American Datum of 1983  
 Imagery/Basemap Source: 2015 Bing  
 Aerial Imagery; ESRI World Transportation

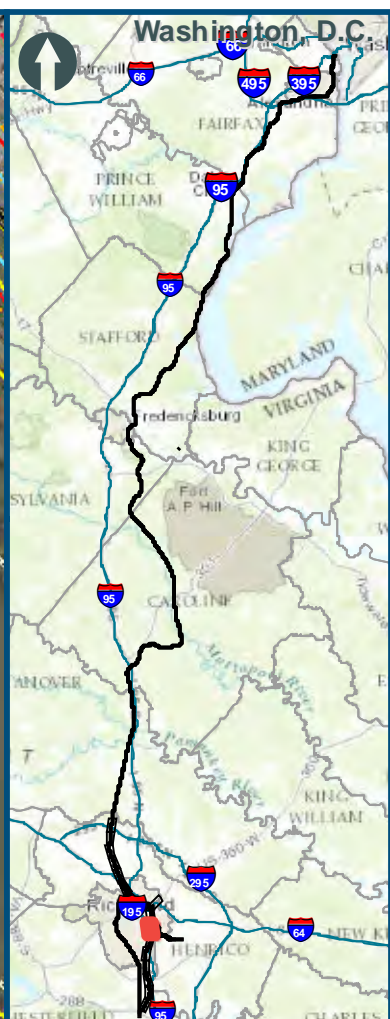
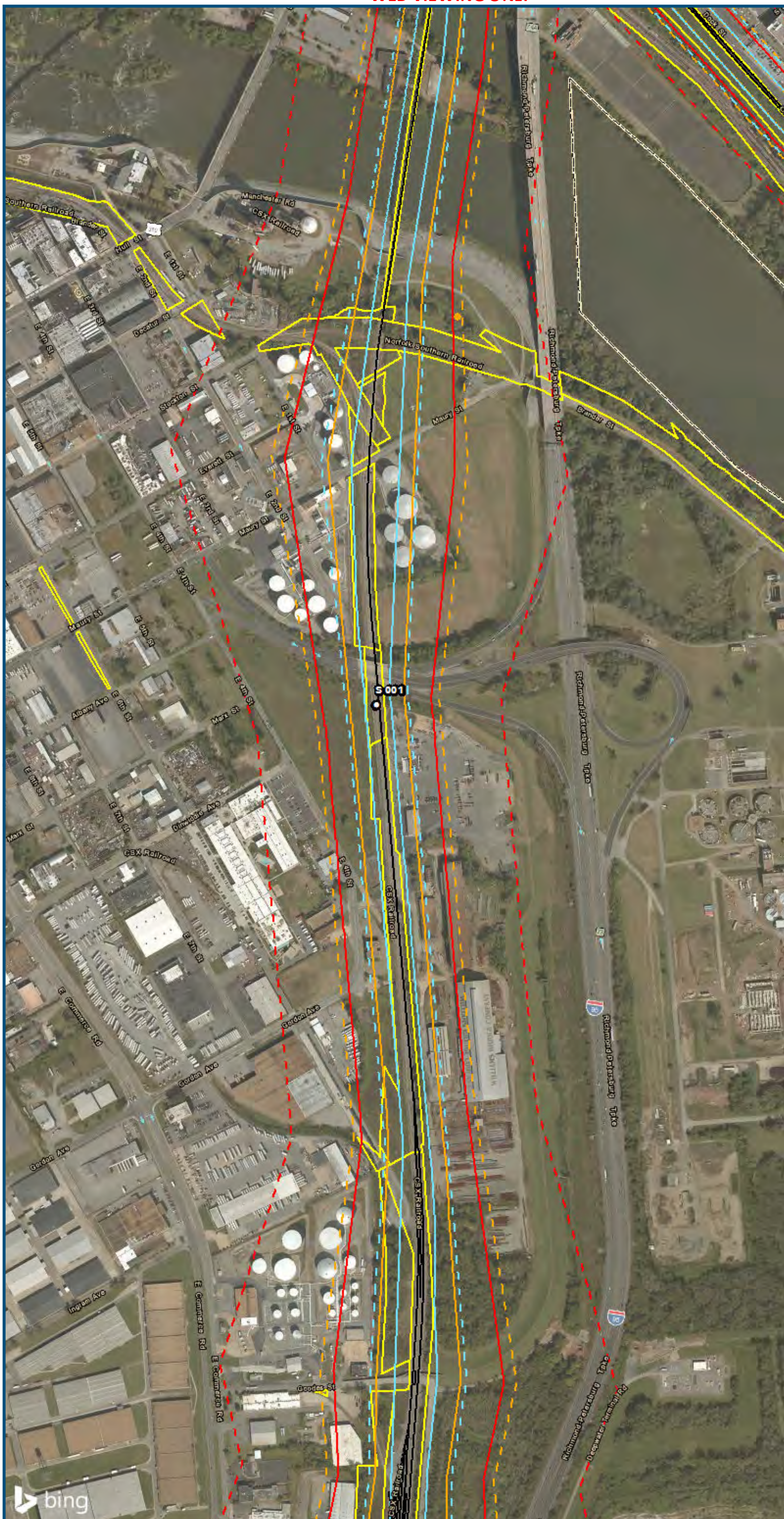
**Legend**

- Category 1 Moderate Noise Impact Contour
- Category 1 Severe Noise Impact Contour
- Category 1 Moderate Noise Impacts
- Category 1 Severe Noise Impacts
- Category 2 Moderate Noise Impact Contour
- Category 2 Severe Noise Impact Contour
- Category 2 Moderate Noise Impacts
- Category 2 Severe Noise Impacts
- Category 3 Moderate Noise Impact Contour
- Category 3 Severe Noise Impact Contour
- Category 3 Moderate Noise Impacts
- Category 3 Severe Noise Impacts
- CSXT Mileposts
- Track - Existing
- Stations
- Proposed Stations
- CSXT ROW (County Parcel Data)
- City/County Boundary

**Appendix L  
 Noise Analysis  
 Area 6B-S Line:  
 Boulevard  
 Station Only**



\\dcis-main\gis\_data\GIS\Projects\0115-46\_VA\_Depot\RailtoRVA\Public\Transportation\0239056\_RAPS-4\11Dev-Concept\Eng\map\_docs\mxd\01EIS\Tech\_Reports\Noise\NoiseVib\_Area6BS\_Mapbook\_11x17\_WEB.mxd | Last Updated: 06.15.2017



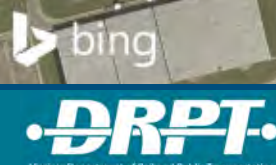
0 250 500  
 Feet  
 1 inch = 500 feet  
 @ 11 x 17 inches  
 Projection: Lambert Conformal Conic  
 State Plane Virginia North FIPS 4501 Feet  
 North American Datum of 1983  
 Imagery/Basemap Source: 2015 Bing  
 Aerial Imagery; ESRI World Transportation

**Legend**

- Category 1 Moderate Noise Impact Contour
- Category 1 Severe Noise Impact Contour
- Category 1 Moderate Noise Impacts
- Category 1 Severe Noise Impacts
- Category 2 Moderate Noise Impact Contour
- Category 2 Severe Noise Impact Contour
- Category 2 Moderate Noise Impacts
- Category 2 Severe Noise Impacts
- Category 3 Moderate Noise Impact Contour
- Category 3 Severe Noise Impact Contour
- Category 3 Moderate Noise Impacts
- Category 3 Severe Noise Impacts
- CSXT Mileposts
- Track - Existing
- Stations
- Proposed Stations
- CSXT ROW (County Parcel Data)
- City/County Boundary

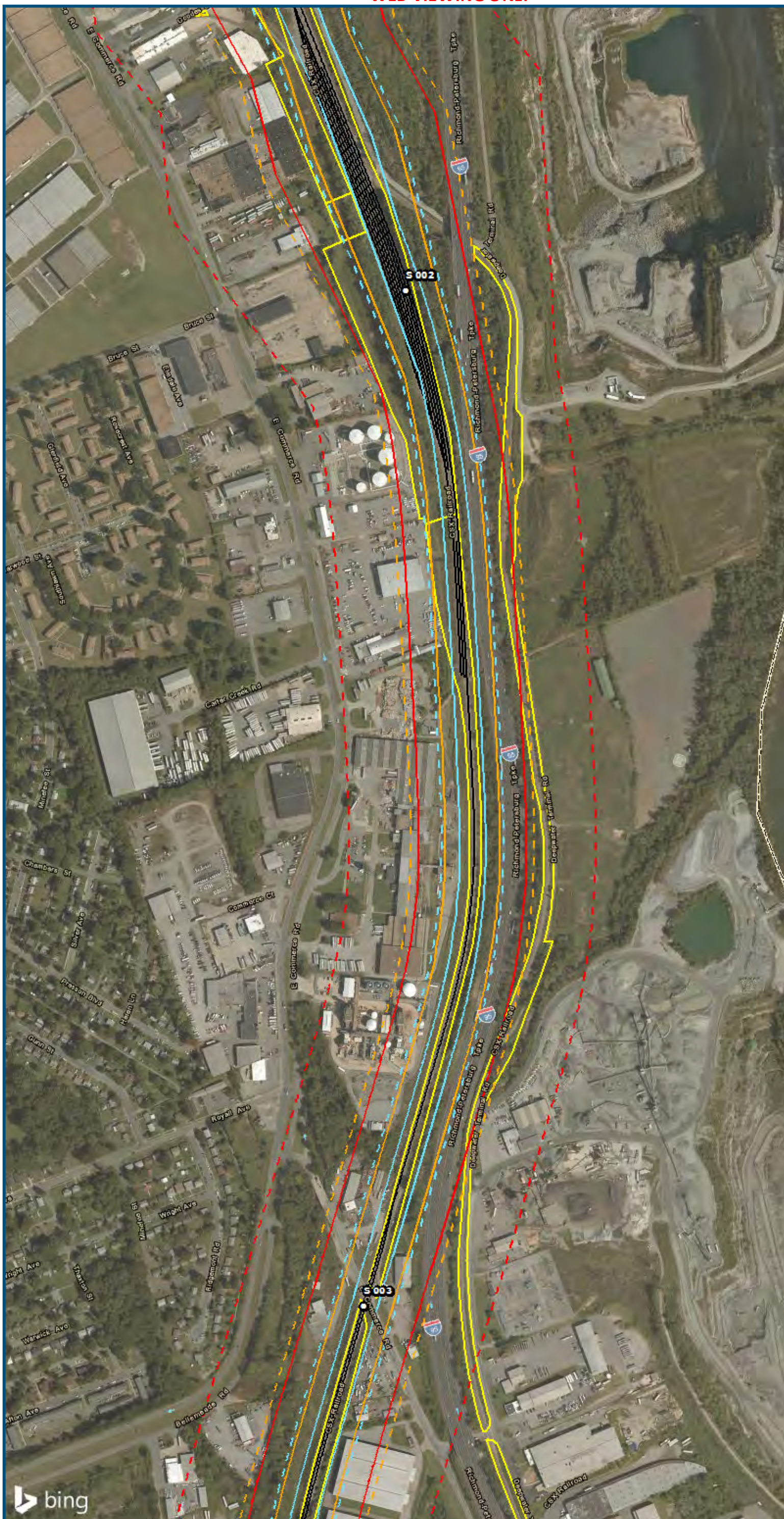
**Appendix L  
 Noise Analysis  
 Area 6B-S Line:  
 Boulevard  
 Station Only**

V:\GIS\main\gis\_data\GIS\Projects\0115-46\_VA\Deplo\Railis-Pub\T\Transportation\0239056\_RAPS-4\AllDev-Concept\Eng\map\_docs\mxd\01EIS\Tech\_Reports\Noise\Area6B\_S\_Mapbook\_11x17\_WEB.mxd | Last Updated: 06.15.2017



www.DC2RVArail.com





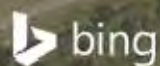
0 250 500  
 Feet  
 1 inch = 500 feet  
 @ 11 x 17 inches  
 Projection: Lambert Conformal Conic  
 State Plane Virginia North FIPS 4501 Feet  
 North American Datum of 1983  
 Imagery/Basemap Source: 2015 Bing  
 Aerial Imagery; ESRI World Transportation

**Legend**

- Category 1 Moderate Noise Impact Contour
- Category 1 Severe Noise Impact Contour
- Category 1 Moderate Noise Impacts
- Category 1 Severe Noise Impacts
- Category 2 Moderate Noise Impact Contour
- Category 2 Severe Noise Impact Contour
- Category 2 Moderate Noise Impacts
- Category 2 Severe Noise Impacts
- Category 3 Moderate Noise Impact Contour
- Category 3 Severe Noise Impact Contour
- Category 3 Moderate Noise Impacts
- Category 3 Severe Noise Impacts
- CSXT Mileposts
- Track - Existing
- Stations
- Proposed Stations
- CSXT ROW (County Parcel Data)
- City/County Boundary

**Appendix L  
 Noise Analysis  
 Area 6B-S Line:  
 Boulevard  
 Station Only**

\\dcis-main\gis\_data\GIS\Projects\0115-46\_VA\_Depot\Rail-PublicTransportation\02309056\_RAPS-4\ITDev-Concept\Eng\map\_docs\mxd\01EIS\Tech\_Reports\Noise\NoiseandVibrationWeb\_Versions\NoiseVib\_Area6BS\_Mapbook\_11x17\_WEB.mxd | Last Updated: 06.15.2017



www.DC2RVArail.com





0 250 500  
 Feet  
 1 inch = 500 feet  
 @ 11 x 17 inches  
 Projection: Lambert Conformal Conic  
 State Plane Virginia North FIPS 4501 Feet  
 North American Datum of 1983  
 Imagery/Basemap Source: 2015 Bing  
 Aerial Imagery; ESRI World Transportation

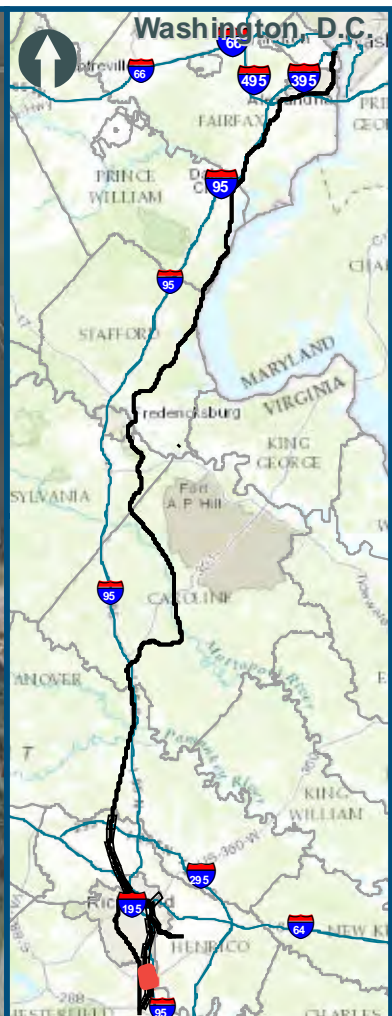
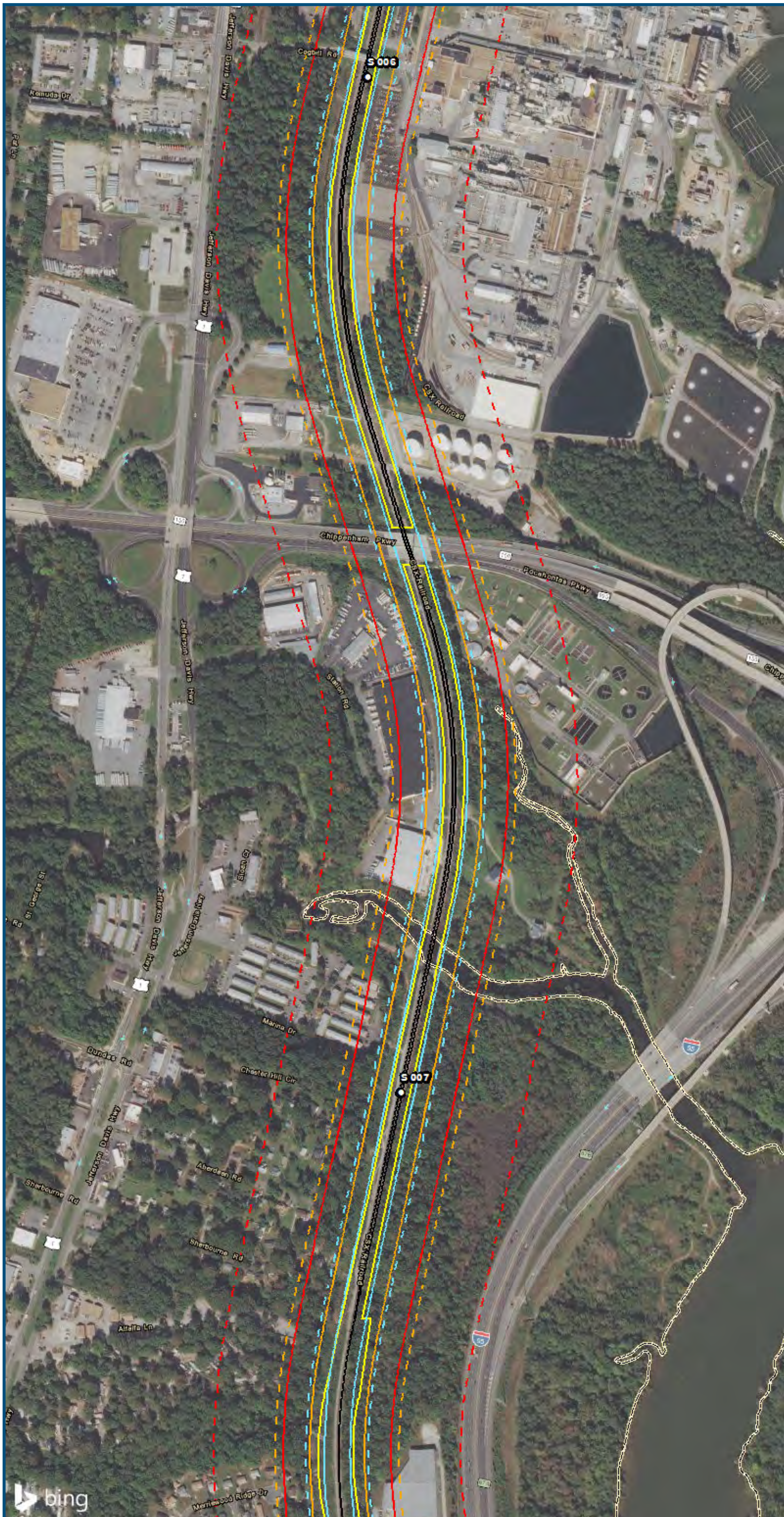
**Legend**

- Category 1 Moderate Noise Impact Contour
- Category 1 Severe Noise Impact Contour
- Category 1 Moderate Noise Impacts
- Category 1 Severe Noise Impacts
- Category 2 Moderate Noise Impact Contour
- Category 2 Severe Noise Impact Contour
- Category 2 Moderate Noise Impacts
- Category 2 Severe Noise Impacts
- Category 3 Moderate Noise Impact Contour
- Category 3 Severe Noise Impact Contour
- Category 3 Moderate Noise Impacts
- Category 3 Severe Noise Impacts
- CSXT Mileposts
- Track - Existing
- Stations
- Proposed Stations
- CSXT ROW (County Parcel Data)
- City/County Boundary

**Appendix L  
 Noise Analysis  
 Area 6B-S Line:  
 Boulevard  
 Station Only**

\\dcis-main\gis\_data\GIS\Projects\0115-45\_VA\_Dep\toRails-Pub\toT transportation\02309056\_RAPS-4\ItDev-Concept\Eng\map\_docs\mxd\011545\_VA\_Dep\toRails-Pub\toT transportation\02309056\_Versions\NoiseVib\_Area6BS\_Mapbook\_11x17\_WEB.mxd | Last Updated: 06.15.2017





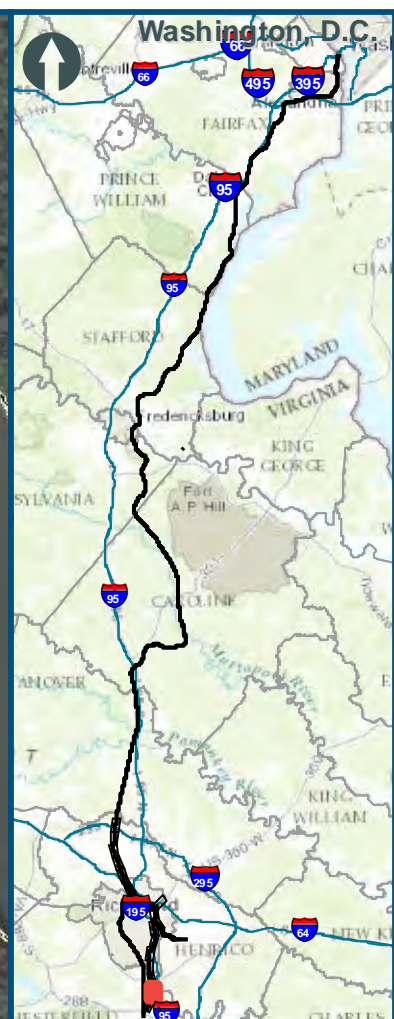
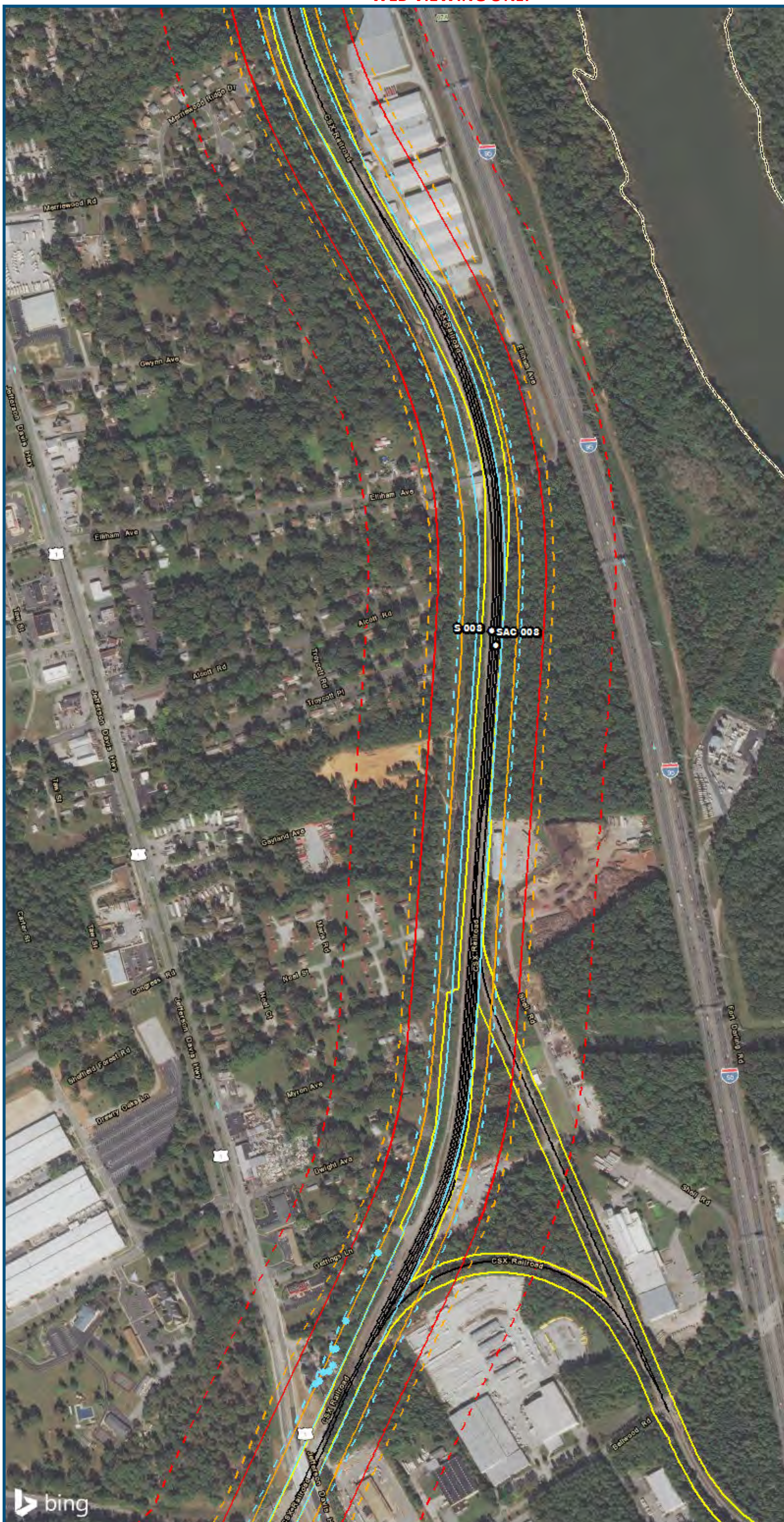
0 250 500  
Feet  
1 inch = 500 feet  
@ 11 x 17 inches  
Projection: Lambert Conformal Conic  
State Plane Virginia North FIPS 4501 Feet  
North American Datum of 1983  
Imagery/Basemap Source: 2015 Bing  
Aerial Imagery; ESRI World Transportation

**Legend**

- Category 1 Moderate Noise Impact Contour
- Category 1 Severe Noise Impact Contour
- Category 1 Moderate Noise Impacts
- Category 1 Severe Noise Impacts
- Category 2 Moderate Noise Impact Contour
- Category 2 Severe Noise Impact Contour
- Category 2 Moderate Noise Impacts
- Category 2 Severe Noise Impacts
- Category 3 Moderate Noise Impact Contour
- Category 3 Severe Noise Impact Contour
- Category 3 Moderate Noise Impacts
- Category 3 Severe Noise Impacts
- CSXT Mileposts
- Track - Existing
- Stations
- Proposed Stations
- CSXT ROW (County Parcel Data)
- City/County Boundary

**Appendix L  
Noise Analysis  
Area 6B-S Line:  
Boulevard  
Station Only**

Sheet 15 of 18



0 250 500  
 Feet  
 1 inch = 500 feet  
 @ 11 x 17 inches  
 Projection: Lambert Conformal Conic  
 State Plane Virginia North FIPS 4501 Feet  
 North American Datum of 1983  
 Imagery/Basemap Source: 2015 Bing  
 Aerial Imagery; ESRI World Transportation

**Legend**

- Category 1 Moderate Noise Impact Contour
- Category 1 Severe Noise Impact Contour
- Category 1 Moderate Noise Impacts
- Category 1 Severe Noise Impacts
- Category 2 Moderate Noise Impact Contour
- Category 2 Severe Noise Impact Contour
- Category 2 Moderate Noise Impacts
- Category 2 Severe Noise Impacts
- Category 3 Moderate Noise Impact Contour
- Category 3 Severe Noise Impact Contour
- Category 3 Moderate Noise Impacts
- Category 3 Severe Noise Impacts
- CSXT Mileposts
- Track - Existing
- Stations
- Proposed Stations
- CSXT ROW (County Parcel Data)
- City/County Boundary

**Appendix L  
 Noise Analysis  
 Area 6B-S Line:  
 Boulevard  
 Station Only**

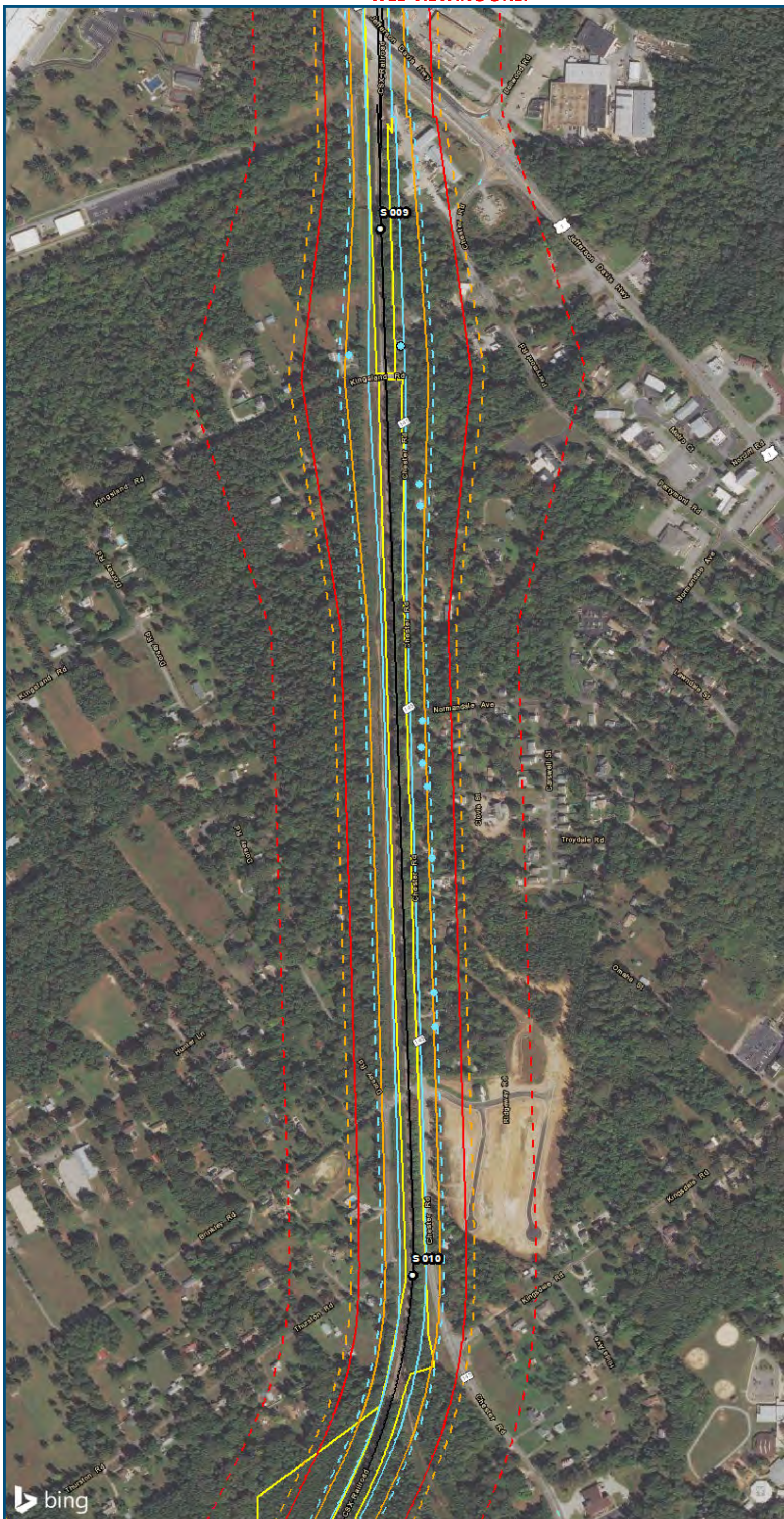
\\dcis-main\gis\_data\GIS\Projects\0115-46\_VA\_Depot\Rail-Public\T-transportation\02390566\_RAPS-4\AllDev-Concept\Eng\map\_docs\mxd\0115-46\_VA\_Depot\Rail-Public\T-transportation\02390566\_RAPS-4\AllDev-Concept\NoiseVib\_Area6BS\_Mapbook\_11x17\_WEB.mxd | Last Updated: 06.15.2017



www.DC2RVArail.com





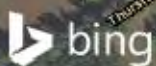


0 250 500  
 Feet  
 1 inch = 500 feet  
 @ 11 x 17 inches  
 Projection: Lambert Conformal Conic  
 State: Plane Virginia North FIPS 4501 Feet  
 North American Datum of 1983  
 Imagery/Basemap Source: 2015 Bing  
 Aerial Imagery; ESRI World Transportation

**Legend**

- Category 1 Moderate Noise Impact Contour
- Category 1 Severe Noise Impact Contour
- Category 1 Moderate Noise Impacts
- Category 1 Severe Noise Impacts
- Category 2 Moderate Noise Impact Contour
- Category 2 Severe Noise Impact Contour
- Category 2 Moderate Noise Impacts
- Category 2 Severe Noise Impacts
- Category 3 Moderate Noise Impact Contour
- Category 3 Severe Noise Impact Contour
- Category 3 Moderate Noise Impacts
- Category 3 Severe Noise Impacts
- CSXT Mileposts
- Track - Existing
- Stations
- Proposed Stations
- CSXT ROW (County Parcel Data)
- City/County Boundary

**Appendix L  
 Noise Analysis  
 Area 6B-S Line:  
 Boulevard  
 Station Only**



\\dcis-main\gis\_data\GIS\Projects\0115-46\_VA\_DepotofRalls-Public\Tech\_Reports\Noise\Area6B\_S\_Line\1x17\_WEB.mxd | Last Updated: 06.15.2017

