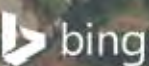


0 250 500  
 Feet  
 1 inch = 500 feet  
 @ 11 x 17 inches  
 Projection: Lambert Conformal Conic  
 State Plane Virginia North FIPS 4501 Feet  
 North American Datum of 1983  
 Imagery/Basemap Source: 2015 Bing  
 Aerial Imagery; ESRI World Transportation

**Legend**

- Category 2 Vibration Impact Contour
- Category 3 Vibration Impact Contour
- Category 2 Vibration Impacts
- Category 3 Vibration Impacts
- CSXT Mileposts
- Track - Existing
- Stations
- Proposed Stations
- CSXT ROW (County Parcel Data)
- City/County Boundary

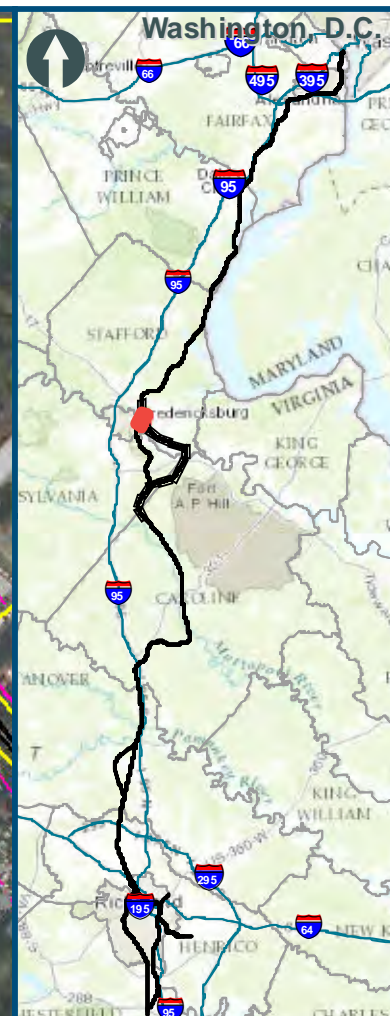
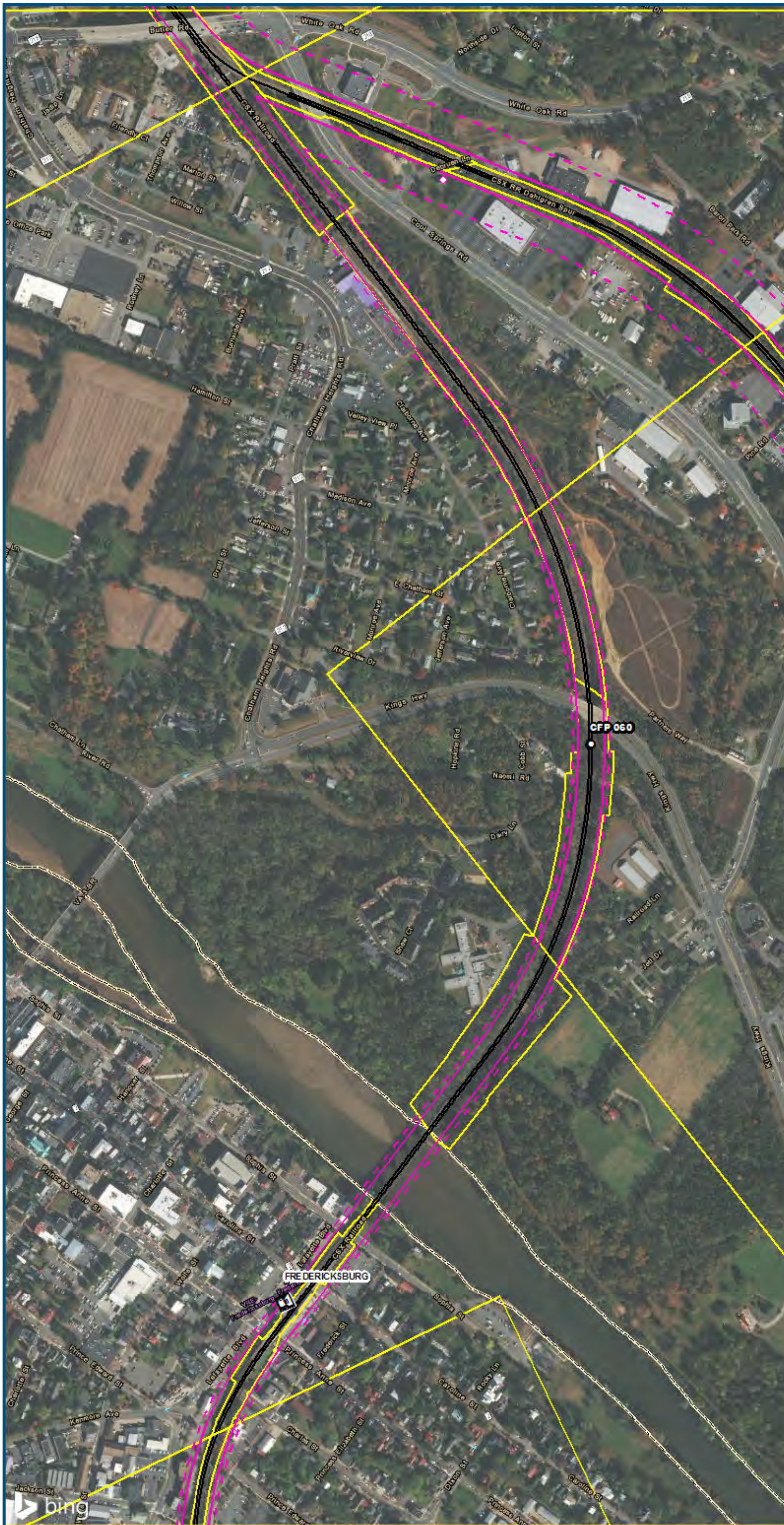
**Appendix R  
 Vibration Analysis  
 Area 3C:  
 Fredericksburg**



[www.DC2RVArail.com](http://www.DC2RVArail.com)



\\dcis-main\gis\_data\GIS\Projects\0115-45\_VA\Depot\Rail-Public\Transportation\0239056\_RAPS-4\ITDev-Concept\Eng\map\_docs\mxd\01EIS\Tech\_Reports\Noise and Vibration\Web\_Versions\Noise and Vibration\Area3C\_Mapbook\_11x17\_WEB.mxd | Last Updated: 08.16.2017



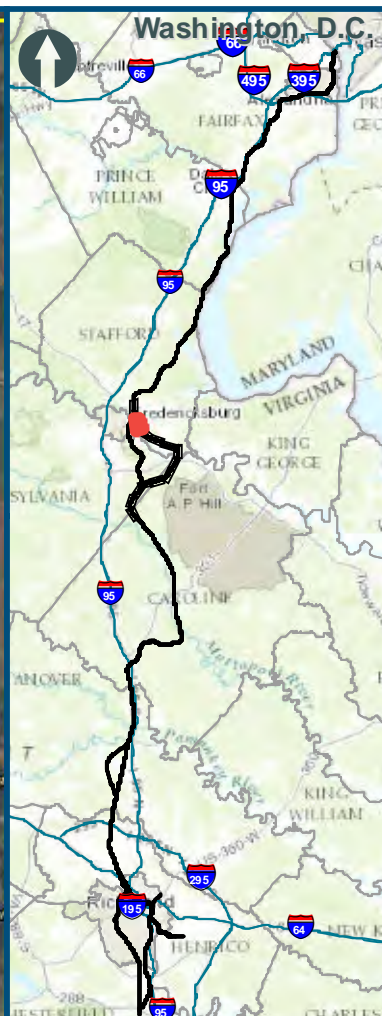
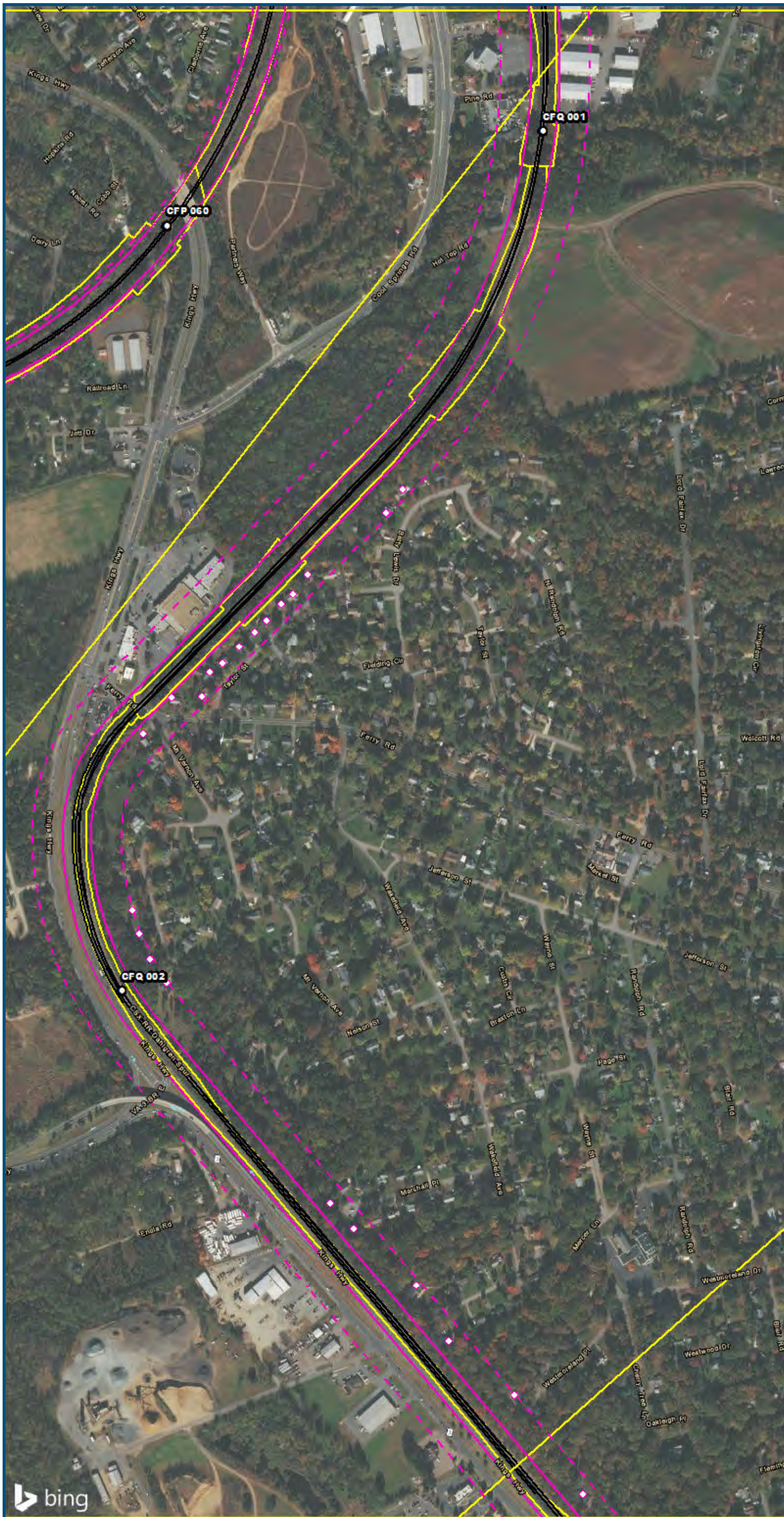
0 250 500  
 Feet  
 1 inch = 500 feet  
 @ 11 x 17 inches  
 Projection: Lambert Conformal Conic  
 State Plane Virginia North FIPS 4501 Feet  
 North American Datum of 1983  
 Imagery/Basemap Source: 2015 Bing  
 Aerial Imagery; ESRI World Transportation

**Legend**

- Category 2 Vibration Impact Contour
- Category 3 Vibration Impact Contour
- Category 2 Vibration Impacts
- Category 3 Vibration Impacts
- CSXT Mileposts
- Track - Existing
- Stations
- Proposed Stations
- CSXT ROW (County Parcel Data)
- City/County Boundary

**Appendix R  
 Vibration Analysis  
 Area 3C:  
 Fredericksburg**

\\dcis-main\gis\_data\GIS\Projects\0115-46\_VA\_Depot\Rail-Public\T transportation\0239056\_RAPS-4\ITDev-Concept\Eng\map\_docs\mxd\01EIS\Tech\_Reports\Noise and Vibration\Web\_Versions\01EIS\_Vibration\_Area3C\_Mapbook\_11x17\_WEB.mxd | Last Updated: 08.16.2017



0 250 500  
 Feet  
 1 inch = 500 feet  
 @ 11 x 17 inches  
 Projection: Lambert Conformal Conic  
 State Plane Virginia North FIPS 4501 Feet  
 North American Datum of 1983  
 Imagery/Basemap Source: 2015 Bing  
 Aerial Imagery; ESRI World Transportation

- Legend**
- Category 2 Vibration Impact Contour
  - Category 3 Vibration Impact Contour
  - Category 2 Vibration Impacts
  - Category 3 Vibration Impacts
  - CSXT Mileposts
  - Track - Existing
  - Stations
  - Proposed Stations
  - CSXT ROW (County Parcel Data)
  - City/County Boundary

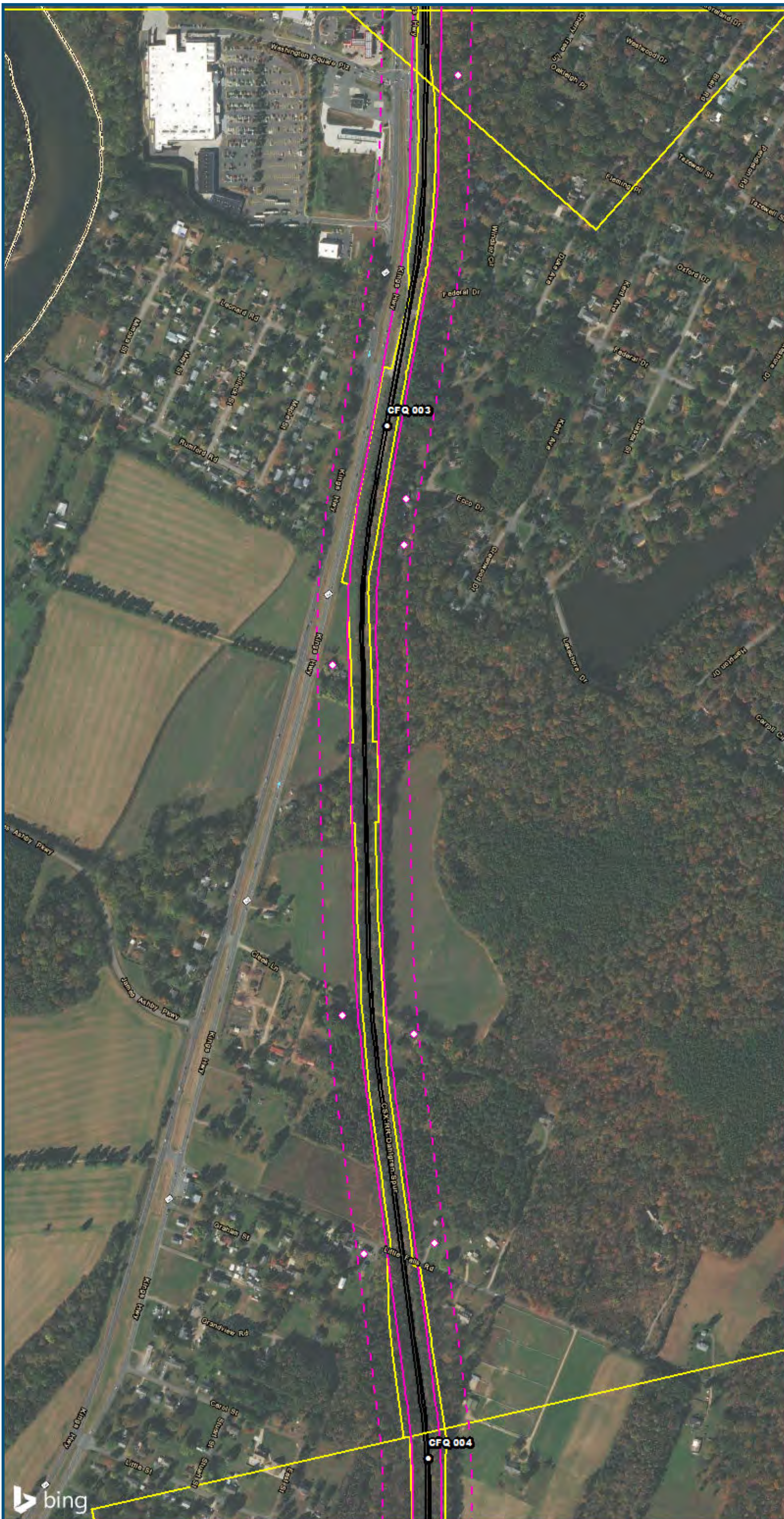
**Appendix R**  
**Vibration Analysis**  
**Area 3C:**  
**Fredericksburg**



[www.DC2RVArail.com](http://www.DC2RVArail.com)



\\dcis-main\gis\_data\GIS\Projects\0115-46\_VA\_Depot\Rail-Public\Transportation\0239056\_RAPS-4\ITDev-Concept\Eng\map\_docs\mxd\01EIS\Tech\_Reports\NoiseandVibration\Web\_Versions\NoiseandVibration\Area3C\_Mapbook\_11x17\_WEB.mxd | Last Updated: 08.16.2017



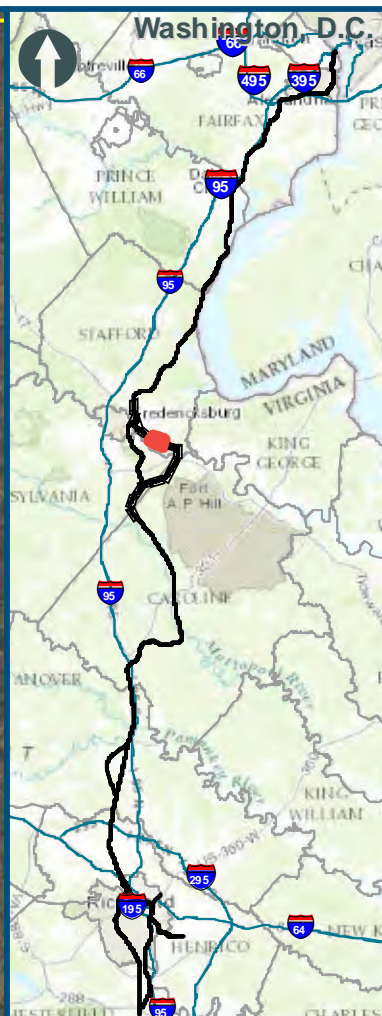
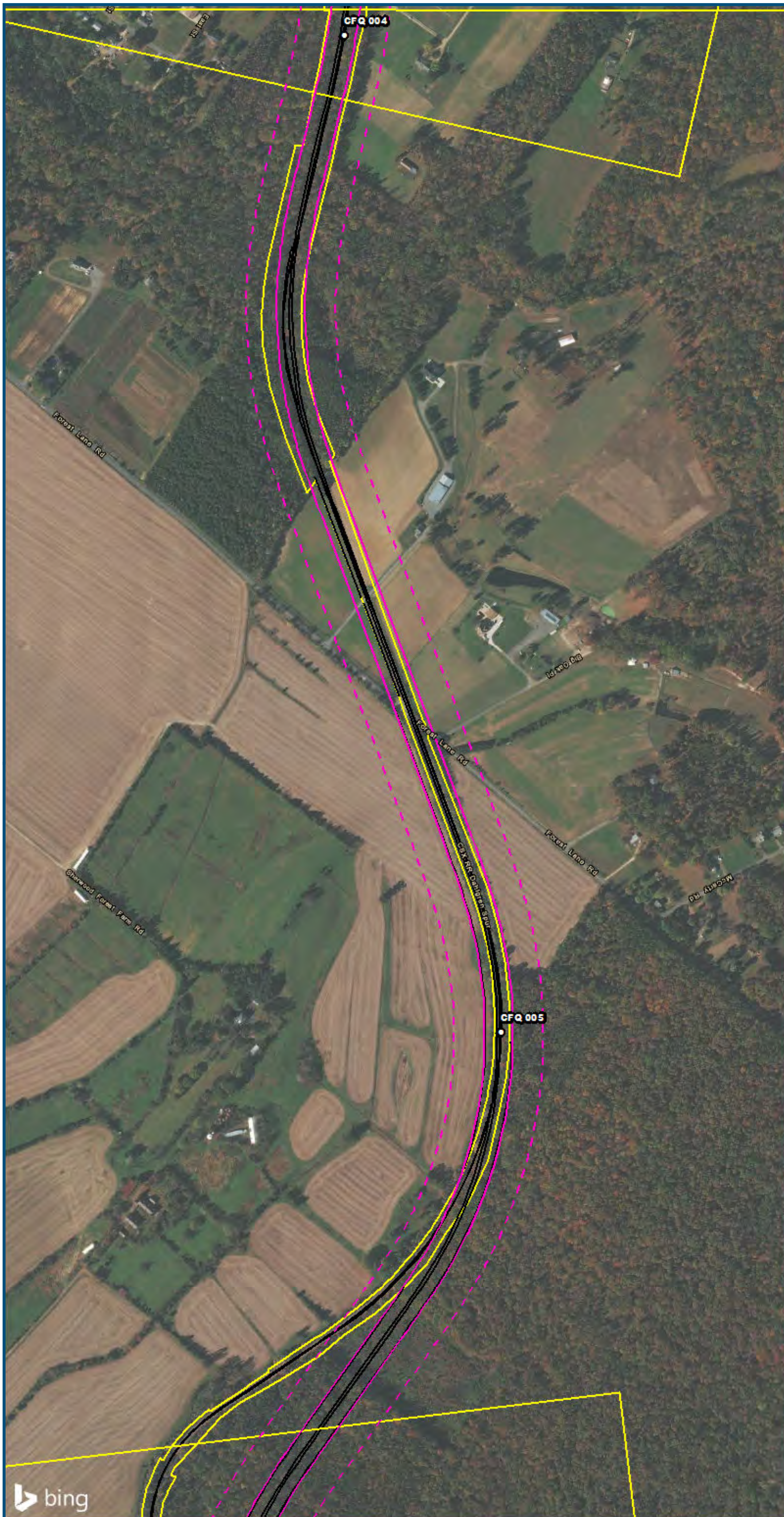
0 250 500  
 Feet  
 1 inch = 500 feet  
 @ 11 x 17 inches  
 Projection: Lambert Conformal Conic  
 State Plane Virginia North FIPS 4501 Feet  
 North American Datum of 1983  
 Imagery/Basemap Source: 2015 Bing  
 Aerial Imagery; ESRI World Transportation

**Legend**

- Category 2 Vibration Impact Contour
- Category 3 Vibration Impact Contour
- Category 2 Vibration Impacts
- Category 3 Vibration Impacts
- CSXT Mileposts
- Track - Existing
- Stations
- Proposed Stations
- CSXT ROW (County Parcel Data)
- City/County Boundary

**Appendix R  
 Vibration Analysis  
 Area 3C:  
 Fredericksburg**

\\dcis-main\gis\_data\GIS\Projects\0115-46\_VA\_Depot\Rail-Public\Transportation\0230756\_RAPS-4\ITDev-Concept\Eng\map\_docs\mxd\01EIS\Tech\_Reports\Noise and Vibration\Web\_Versions\Noise and Vibration\Area3C\_Mapbook\_11x17\_WEB.mxd | Last Updated: 08.16.2017



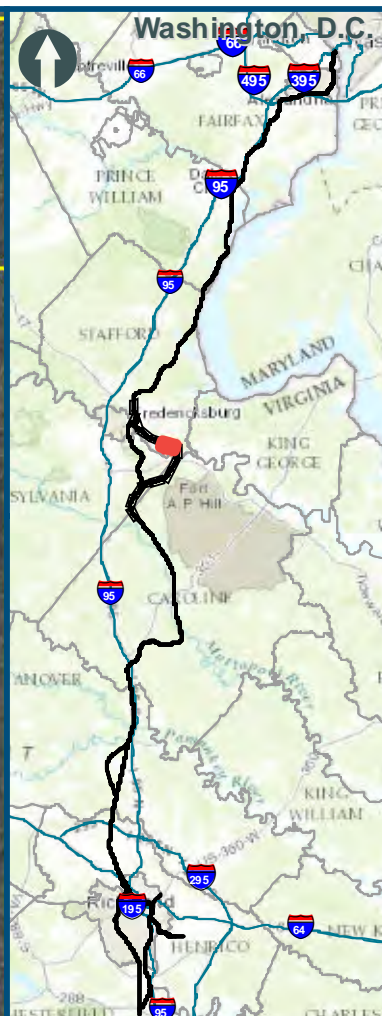
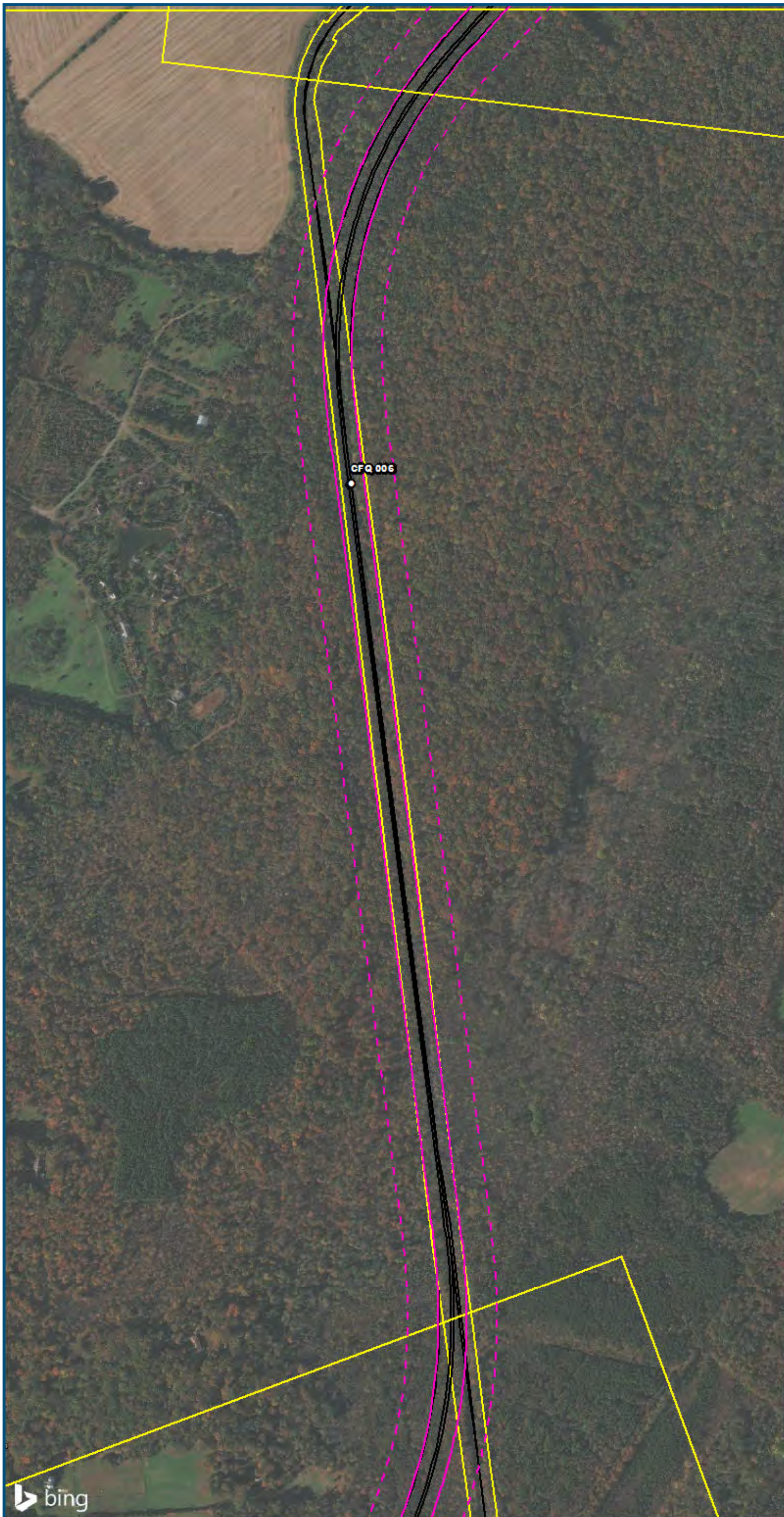
0 250 500  
 Feet  
 1 inch = 500 feet  
 @ 11 x 17 inches  
 Projection: Lambert Conformal Conic  
 State Plane Virginia North FIPS 4501 Feet  
 North American Datum of 1983  
 Imagery/Basemap Source: 2015 Bing  
 Aerial Imagery; ESRI World Transportation

- Legend**
- Category 2 Vibration Impact Contour
  - Category 3 Vibration Impact Contour
  - Category 2 Vibration Impacts
  - Category 3 Vibration Impacts
  - CSXT Mileposts
  - Track - Existing
  - Stations
  - Proposed Stations
  - CSXT ROW (County Parcel Data)
  - City/County Boundary

**Appendix R  
 Vibration Analysis  
 Area 3C:  
 Fredericksburg**



\\vlis-main\gis\_data\GIS\Projects\0115-46\_VA\_Dep\Rail-Public\T\_ran\transportation\0239056\_RAPS-4\ITDev-Concept\Eng\map\_docs\mxd\01EIS\Tech\_Reports\Noise and Vibration\Web\_Versions\Vibration\_Area3C\_Mapbook\_11x17\_WEB.mxd | Last Updated: 08.16.2017

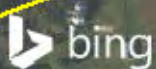


0 250 500  
 Feet  
 1 inch = 500 feet  
 @ 11 x 17 inches  
 Projection: Lambert Conformal Conic  
 State Plane Virginia North FIPS 4501 Feet  
 North American Datum of 1983  
 Imagery/Basemap Source: 2015 Bing  
 Aerial Imagery; ESRI World Transportation

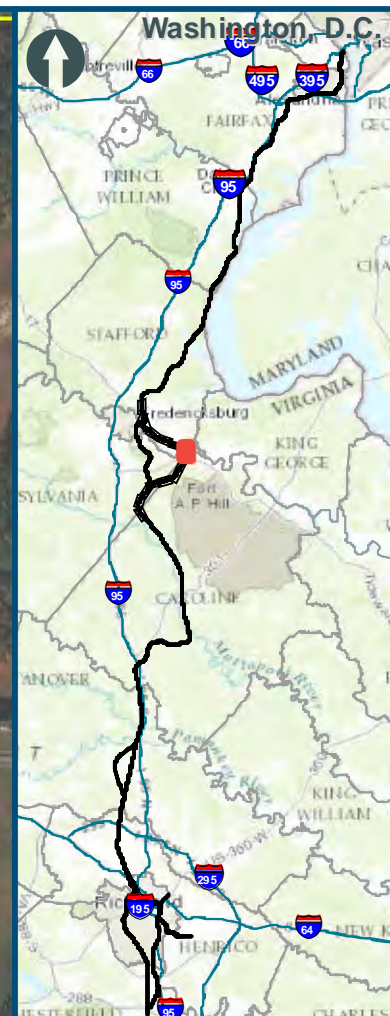
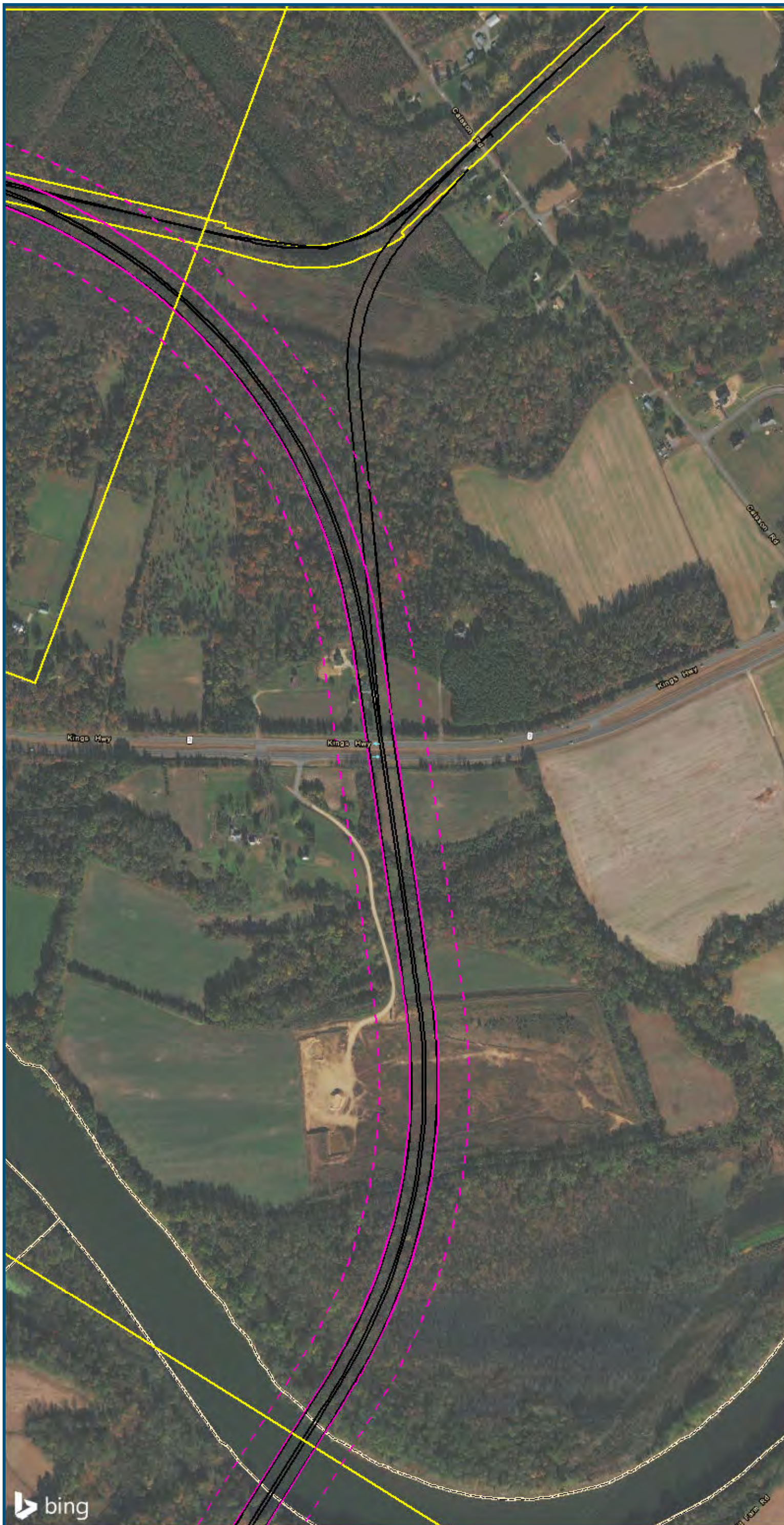
**Legend**

- Category 2 Vibration Impact Contour
- Category 3 Vibration Impact Contour
- Category 2 Vibration Impacts
- Category 3 Vibration Impacts
- CSXT Mileposts
- Track - Existing
- Stations
- Proposed Stations
- CSXT ROW (County Parcel Data)
- City/County Boundary

**Appendix R**  
**Vibration Analysis**  
**Area 3C:**  
**Fredericksburg**



\\cis-main\gis\_data\GIS\Projects\0115-46\_VA\_Dep\Rail-Public\Transportation\0239056\_RAPS-4AltDev-Concept\Eng\map\_docs\mxd\01EIS\Tech\_Reports\Noise and Vibration\Web\_Versions\Vibration\_Area3C\_Mapbook\_11x17\_WEB.mxd | Last Updated: 08.16.2017



0 250 500  
 Feet  
 1 inch = 500 feet  
 @ 11 x 17 inches  
 Projection: Lambert Conformal Conic  
 State Plane Virginia North FIPS 4501 Feet  
 North American Datum of 1983  
 Imagery/Basemap Source: 2015 Bing  
 Aerial Imagery; ESRI World Transportation

- Legend**
- Category 2 Vibration Impact Contour
  - Category 3 Vibration Impact Contour
  - Category 2 Vibration Impacts
  - Category 3 Vibration Impacts
  - CSXT Mileposts
  - Track - Existing
  - Stations
  - Proposed Stations
  - CSXT ROW (County Parcel Data)
  - City/County Boundary

**Appendix R**  
**Vibration Analysis**  
**Area 3C:**  
**Fredericksburg**

\\dcis-main\gis\_data\GIS\Projects\0115-46\_VA\_Dep\of\Rail-Public\Transportation\0239056\_RAPS-4AltDev-Concept\Eng\map\_docs\mxd\01EIS\Tech\_Reports\Noise and Vibration\Web\_Versions\Noise and Vibration\Area3C\_Mapbook\_11x17\_WEB.mxd | Last Updated: 08.16.2017



www.DC2RVArail.com

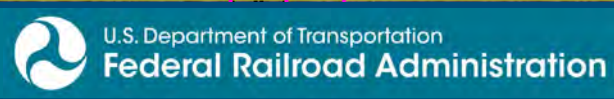




0 250 500  
 Feet  
 1 inch = 500 feet  
 @ 11 x 17 inches  
 Projection: Lambert Conformal Conic  
 State Plane Virginia North FIPS 4501 Feet  
 North American Datum of 1983  
 Imagery/Basemap Source: 2015 Bing  
 Aerial Imagery; ESRI World Transportation

- Legend**
- Category 2 Vibration Impact Contour
  - Category 3 Vibration Impact Contour
  - Category 2 Vibration Impacts
  - Category 3 Vibration Impacts
  - CSXT Mileposts
  - Track - Existing
  - Stations
  - Proposed Stations
  - CSXT ROW (County Parcel Data)
  - City/County Boundary

**Appendix R  
 Vibration Analysis  
 Area 3C:  
 Fredericksburg**

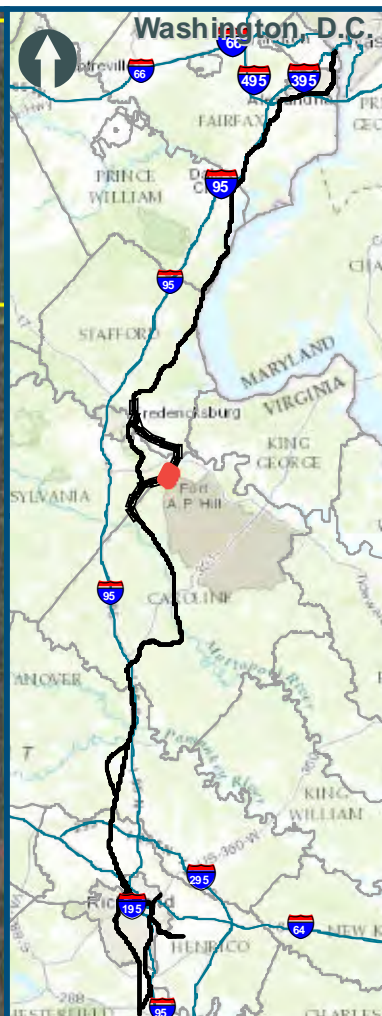


[www.DC2RVArail.com](http://www.DC2RVArail.com)



\\cis-main\gis\_data\GIS\Projects\0115-46\_VA\_Dep\Rail-Public\Transportation\02390566\_RAPS-4AltDev-Concept\Eng\map\_docs\mxd\01EIS\Tech\_Reports\Noise and Vibration\Web\_Versions\Vibration\_Area3C\_Mapbook\_11x17\_WEB.mxd | Last Updated: 08\_16\_2017





0 250 500  
 Feet  
 1 inch = 500 feet  
 @ 11 x 17 inches  
 Projection: Lambert Conformal Conic  
 State Plane Virginia North FIPS 4501 Feet  
 North American Datum of 1983  
 Imagery/Basemap Source: 2015 Bing  
 Aerial Imagery; ESRI World Transportation

- Legend**
- Category 2 Vibration Impact Contour
  - Category 3 Vibration Impact Contour
  - Category 2 Vibration Impacts
  - Category 3 Vibration Impacts
  - CSXT Mileposts
  - Track - Existing
  - Stations
  - Proposed Stations
  - CSXT ROW (County Parcel Data)
  - City/County Boundary

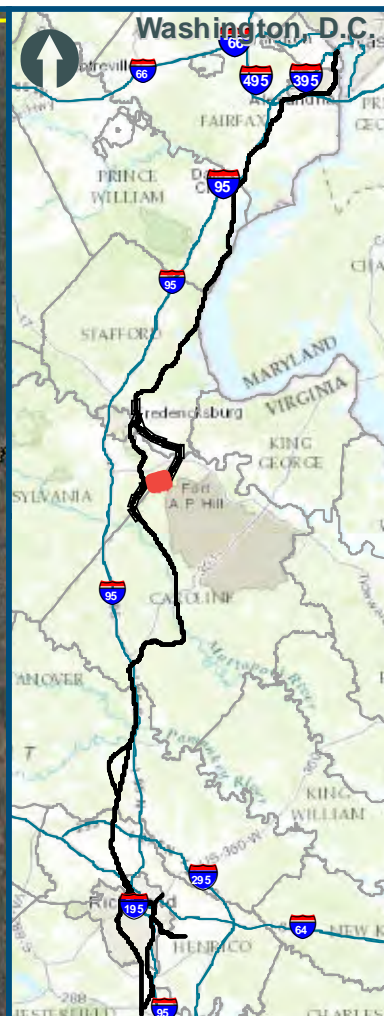
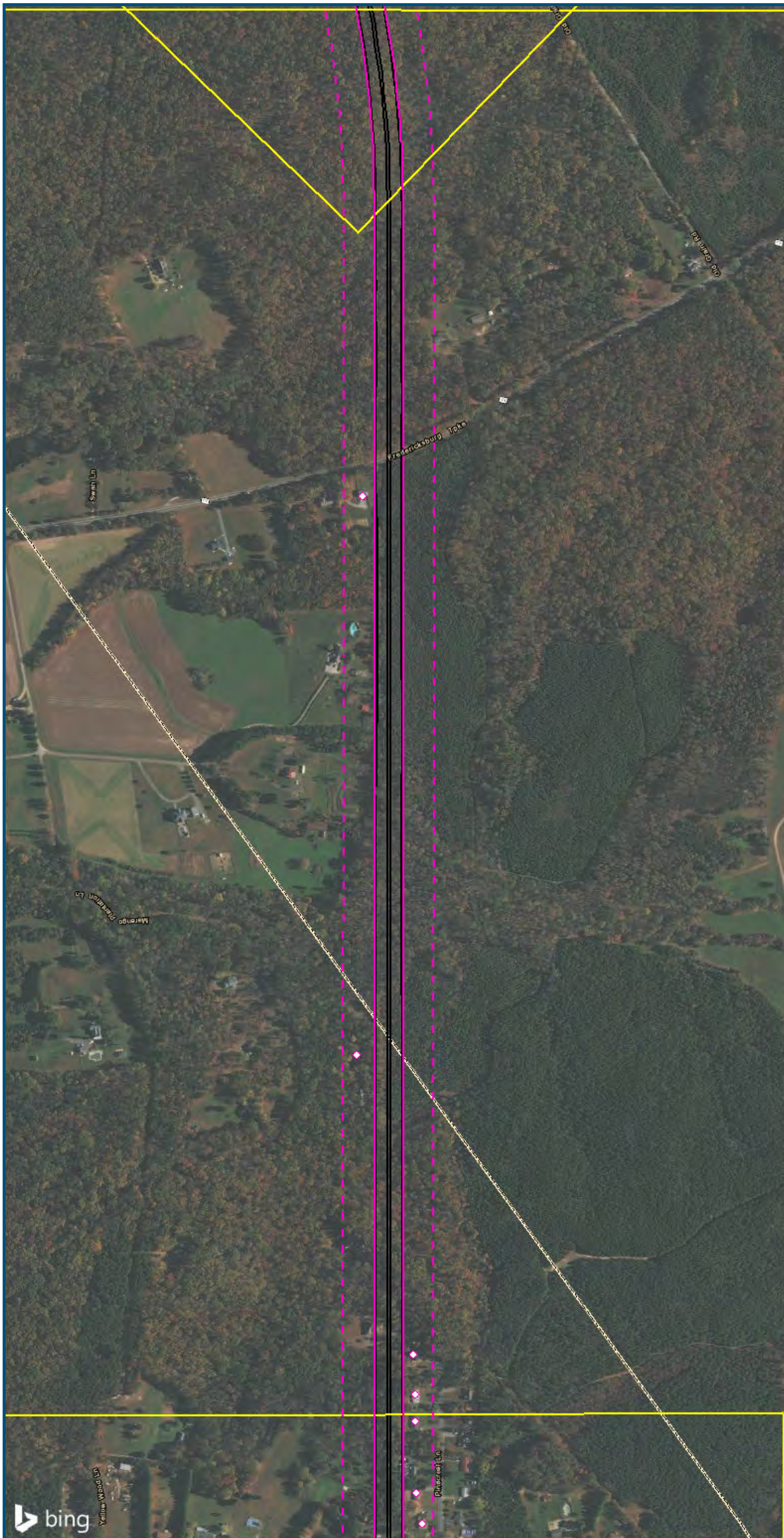
**Appendix R**  
**Vibration Analysis**  
**Area 3C:**  
**Fredericksburg**

\\cis-main\gis\_data\GIS\Projects\0115-46\_VA\_Dep\ofRail-Public\Transportation\0239056\_RAPS-4AltDev-Concept\Eng\map\_docs\mxd\01EIS\Tech\_Reports\Noise and Vibration\Web\_Versions\Vibration\_Area3C\_Mapbook\_11x17\_WEB.mxd | Last Updated: 08.16.2017



[www.DC2RVArail.com](http://www.DC2RVArail.com)



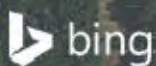


0 250 500  
 Feet  
 1 inch = 500 feet  
 @ 11 x 17 inches  
 Projection: Lambert Conformal Conic  
 State Plane Virginia North FIPS 4501 Feet  
 North American Datum of 1983  
 Imagery/Basemap Source: 2015 Bing  
 Aerial Imagery; ESRI World Transportation

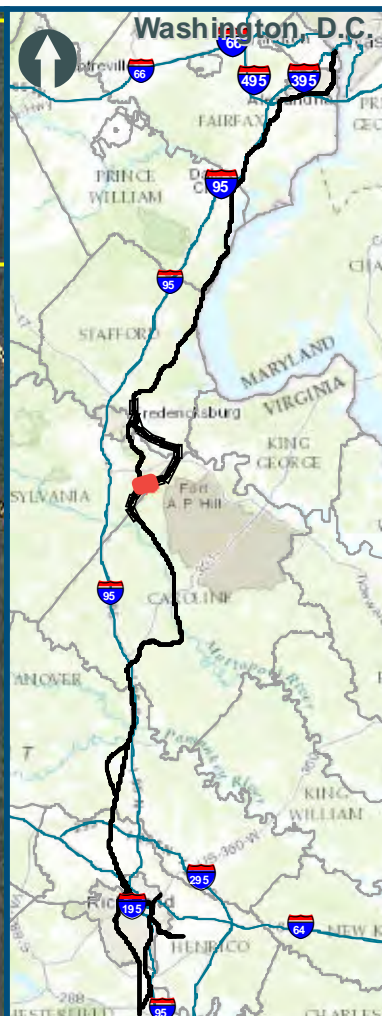
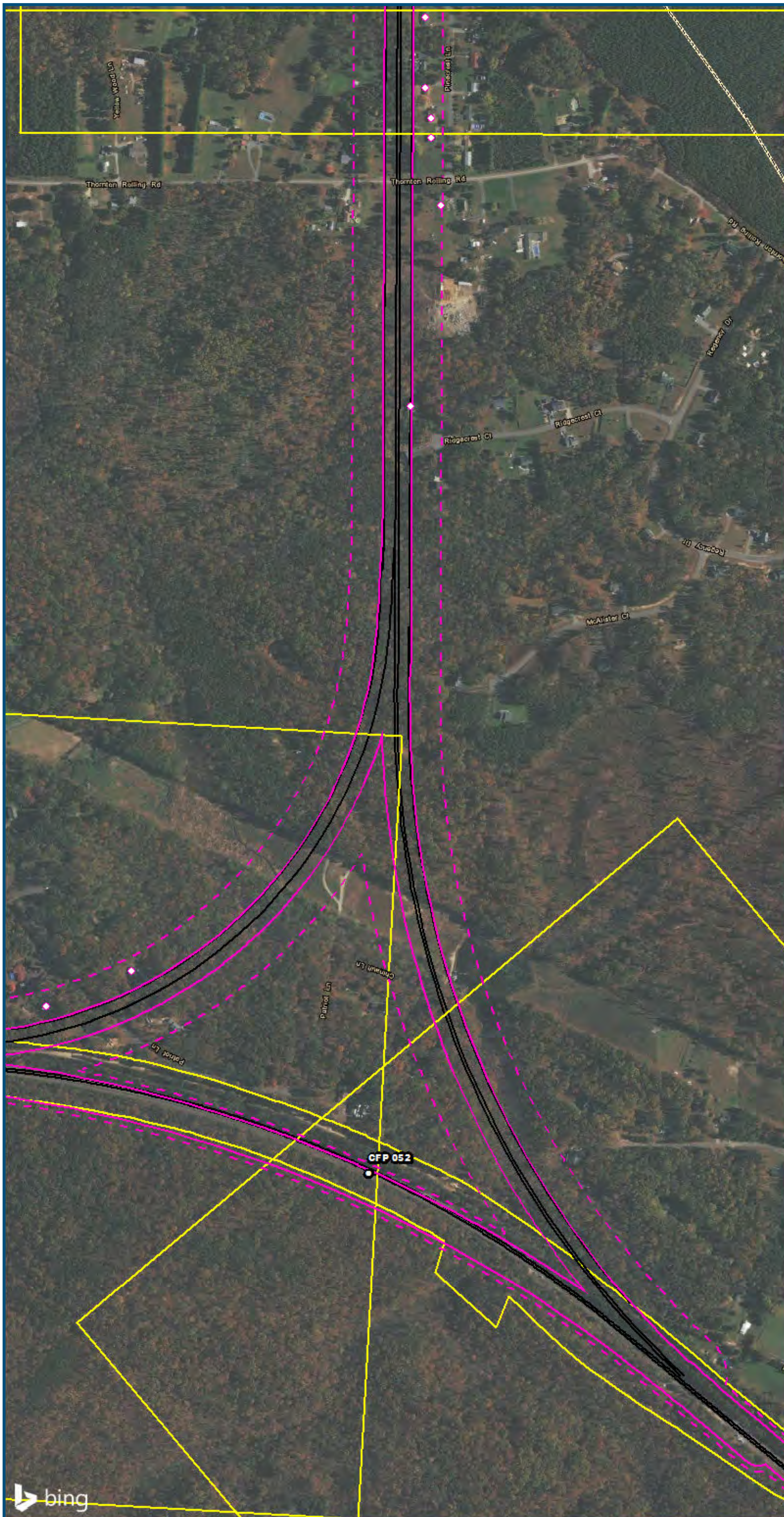
**Legend**

- Category 2 Vibration Impact Contour
- Category 3 Vibration Impact Contour
- Category 2 Vibration Impacts
- Category 3 Vibration Impacts
- CSXT Mileposts
- Track - Existing
- Stations
- Proposed Stations
- CSXT ROW (County Parcel Data)
- City/County Boundary

**Appendix R  
 Vibration Analysis  
 Area 3C:  
 Fredericksburg**



\\dcis-main\gis\_data\GIS\Projects\0115-46\_VA\_Dep\Rail\PublicTransportation\0239056\_RAPS-4AltDev-Concept\Eng\map\_docs\mxd\01EIS\Tech\_Reports\Noise and Vibration\Web\_Versions\Vibration\_Area3C\_Mapbook\_11x17\_WEB.mxd | Last Updated: 08.16.2017



0 250 500  
 Feet  
 1 inch = 500 feet  
 @ 11 x 17 inches  
 Projection: Lambert Conformal Conic  
 State Plane Virginia North FIPS 4501 Feet  
 North American Datum of 1983  
 Imagery/Basemap Source: 2015 Bing  
 Aerial Imagery; ESRI World Transportation

**Legend**

- Category 2 Vibration Impact Contour
- Category 3 Vibration Impact Contour
- Category 2 Vibration Impacts
- Category 3 Vibration Impacts
- CSXT Mileposts
- Track - Existing
- Stations
- Proposed Stations
- CSXT ROW (County Parcel Data)
- City/County Boundary

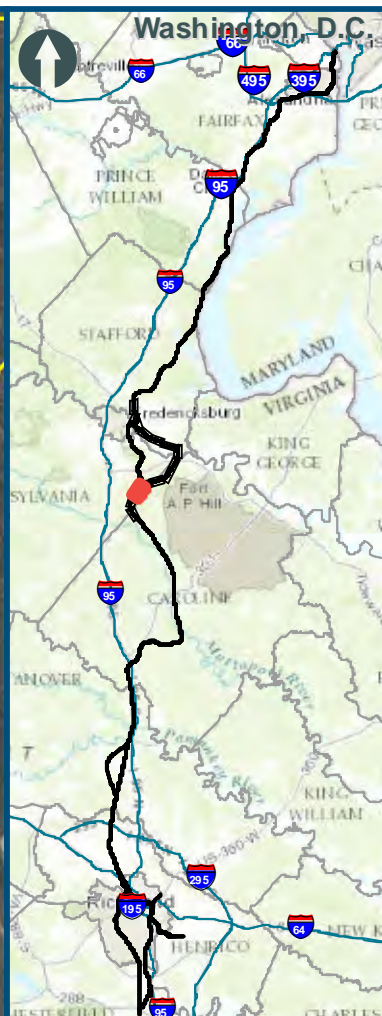
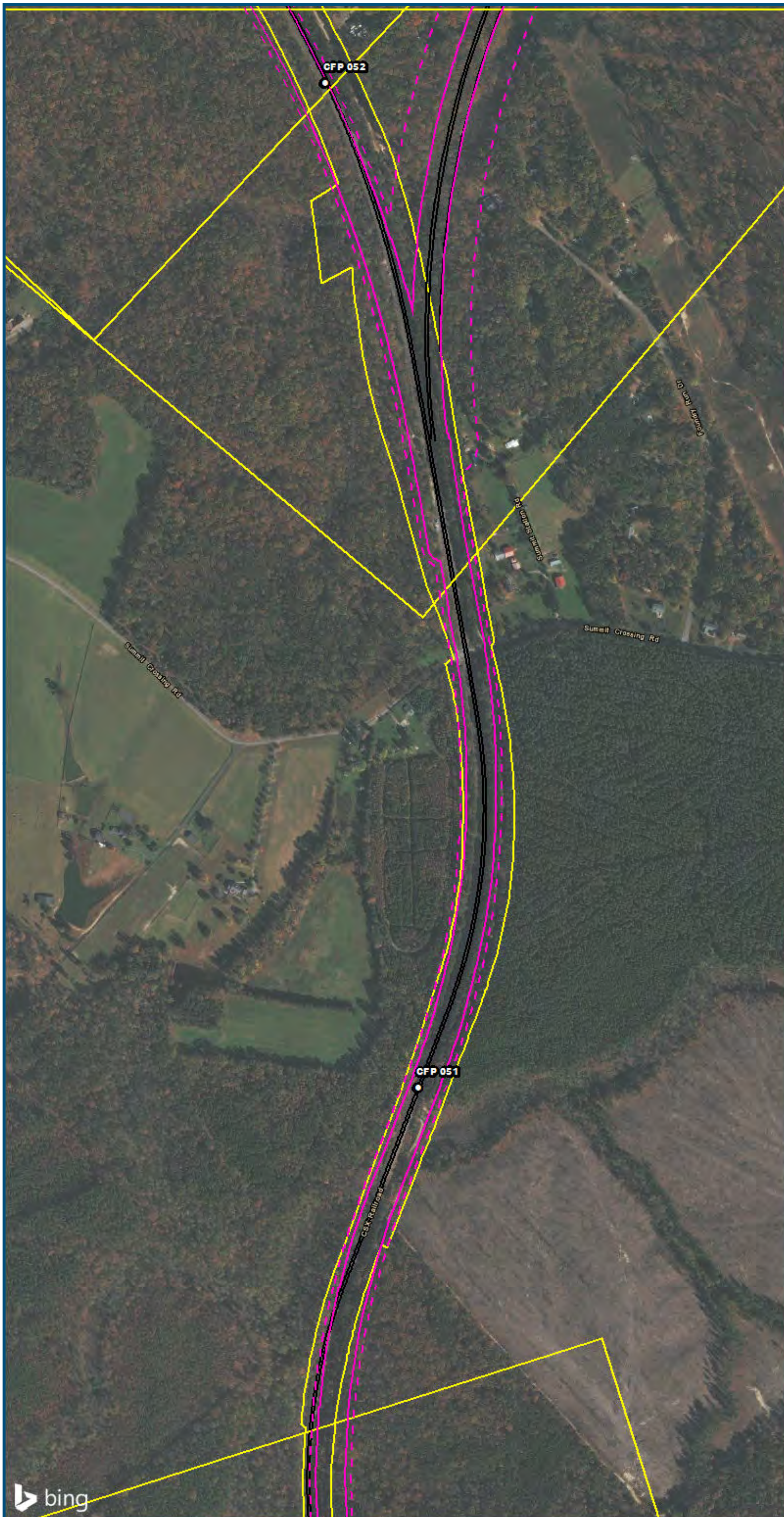
**Appendix R  
 Vibration Analysis  
 Area 3C:  
 Fredericksburg**



[www.DC2RVArail.com](http://www.DC2RVArail.com)



\\dcis-main\gis\_data\GIS\Projects\0115-46\_VA\_Dep\ofRail-Public\T-transportation\0239056\_RAPS-4AltDev-Concept\Eng\map\_docs\mxd\01EIS\Tech\_Reports\Noise and Vibration\Web\_Versions\Noise and Vibration\_Area3C\_Mapbook\_11x17\_WEB.mxd | Last Updated: 08.16.2017



0 250 500  
 Feet  
 1 inch = 500 feet  
 @ 11 x 17 inches  
 Projection: Lambert Conformal Conic  
 State Plane Virginia North FIPS 4501 Feet  
 North American Datum of 1983  
 Imagery/Basemap Source: 2015 Bing  
 Aerial Imagery; ESRI World Transportation

- Legend**
- Category 2 Vibration Impact Contour
  - Category 3 Vibration Impact Contour
  - Category 2 Vibration Impacts
  - Category 3 Vibration Impacts
  - CSXT Mileposts
  - Track - Existing
  - Stations
  - Proposed Stations
  - CSXT ROW (County Parcel Data)
  - City/County Boundary

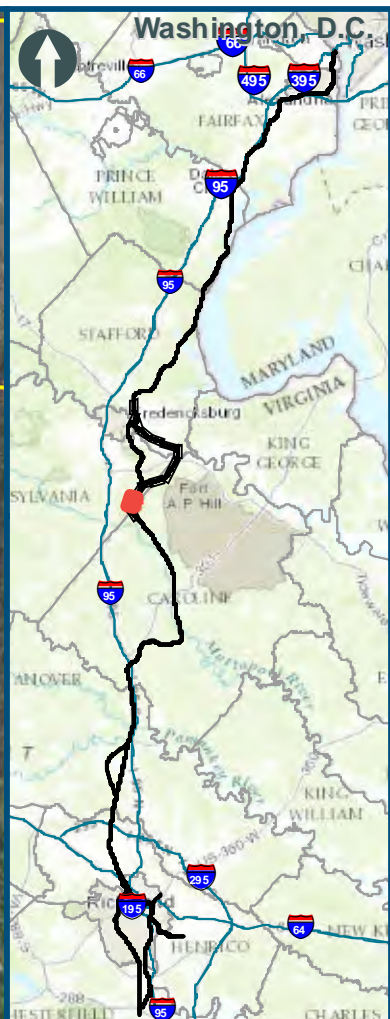
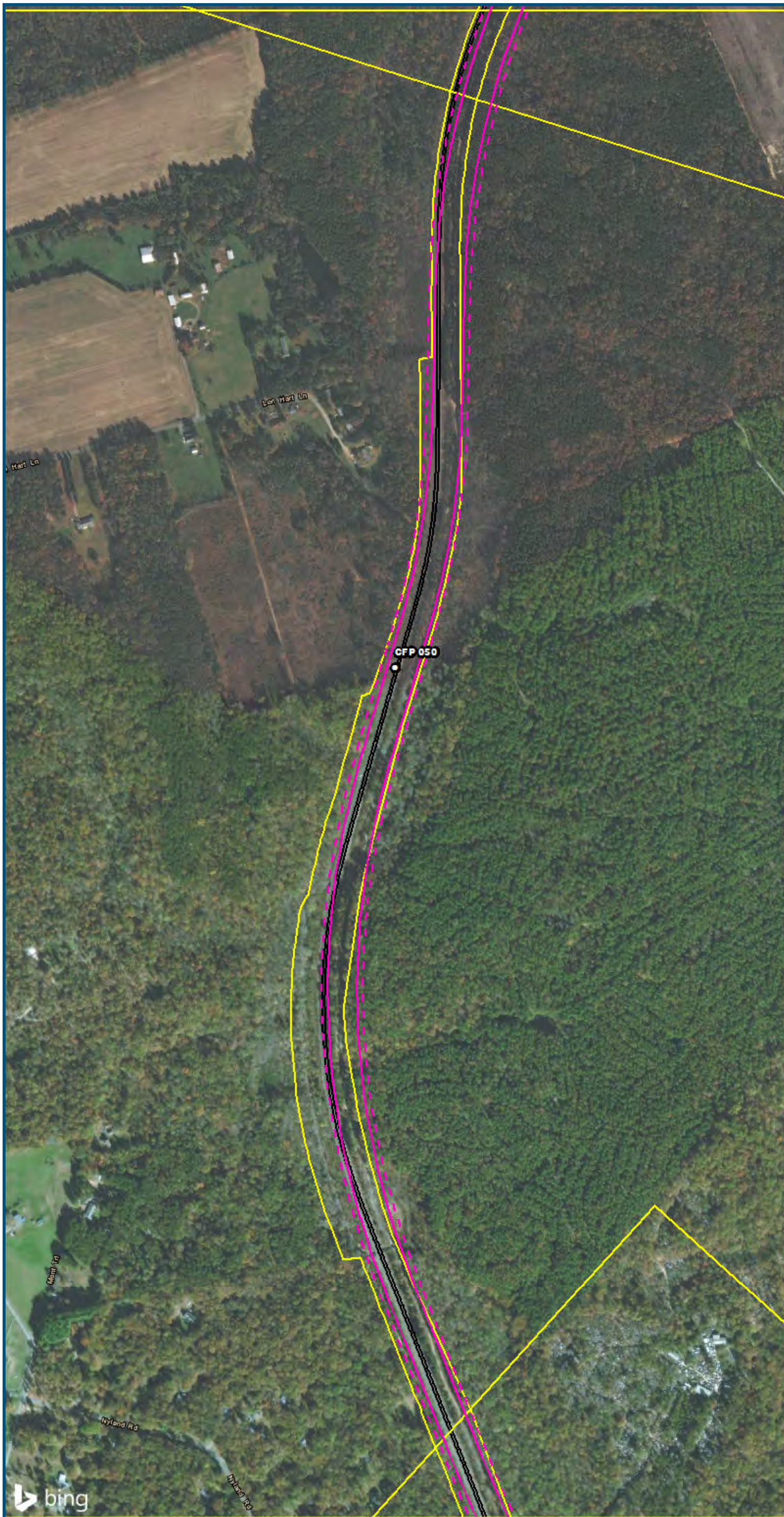
**Appendix R**  
**Vibration Analysis**  
**Area 3C:**  
**Fredericksburg**

\\vlis-main\gis\_data\GIS\Projects\0115-46\_VA\_Dep\toRail-Public\T-transportation\0239056\_RAPS-4AltDev-Concept\Eng\map\_docs\mxd\01EIS\Tech\_Reports\Noise and Vibration\Map\_Versions\Noise and Vibration\Map\_11x17\_WEB.mxd | Last Updated: 08.16.2017



[www.DC2RVArail.com](http://www.DC2RVArail.com)





0 250 500  
 Feet  
 1 inch = 500 feet  
 @ 11 x 17 inches  
 Projection: Lambert Conformal Conic  
 State Plane Virginia North FIPS 4501 Feet  
 North American Datum of 1983  
 Imagery/Basemap Source: 2015 Bing  
 Aerial Imagery; ESRI World Transportation

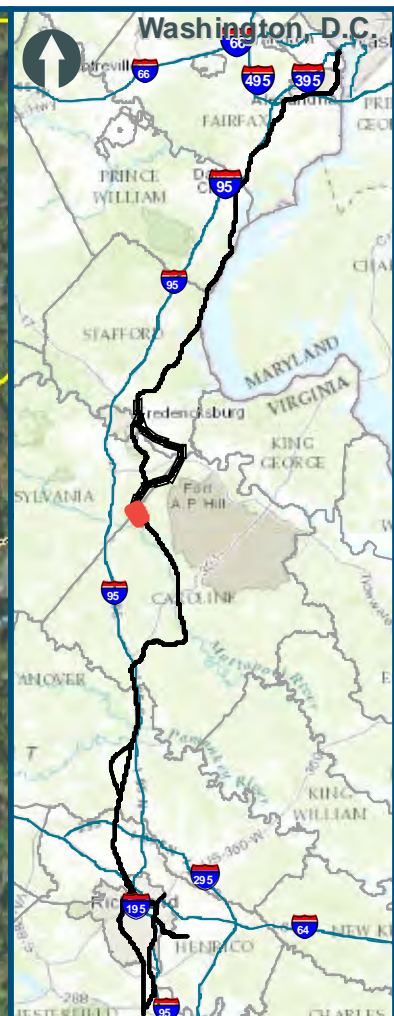
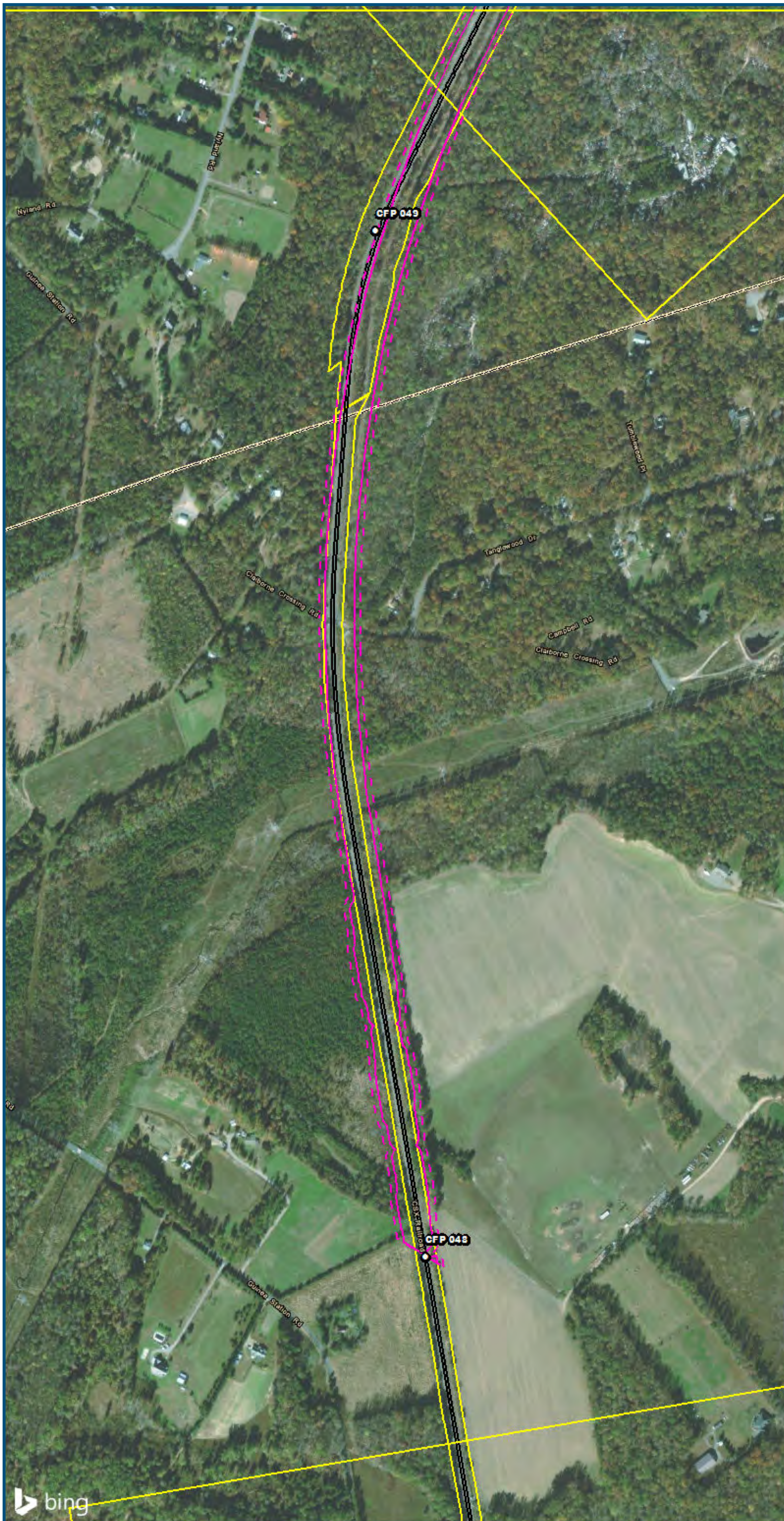
**Legend**

- Category 2 Vibration Impact Contour
- Category 3 Vibration Impact Contour
- Category 2 Vibration Impacts
- Category 3 Vibration Impacts
- CSXT Mileposts
- Track - Existing
- Stations
- Proposed Stations
- CSXT ROW (County Parcel Data)
- City/County Boundary

**Appendix R  
 Vibration Analysis  
 Area 3C:  
 Fredericksburg**



\\dcis-main\gis\_data\GIS\Projects\0115-46\_VA\_Dep\toRail-Public\Transportation\0239056\_RAPS-4\ITDev-Conn\cap\Eng\map\_docs\mxd\01EIS\Tech\_Reports\Noise and Vibration\Map\_Web\_Versions\Vibration\_Area3C\_Mapbook\_11x17\_WEB.mxd | Last Updated: 08.16.2017

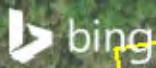


0 250 500  
 Feet  
 1 inch = 500 feet  
 @ 11 x 17 inches  
 Projection: Lambert Conformal Conic  
 State Plane Virginia North FIPS 4501 Feet  
 North American Datum of 1983  
 Imagery/Basemap Source: 2015 Bing  
 Aerial Imagery; ESRI World Transportation

**Legend**

- Category 2 Vibration Impact Contour
- Category 3 Vibration Impact Contour
- Category 2 Vibration Impacts
- Category 3 Vibration Impacts
- CSXT Mileposts
- Track - Existing
- Stations
- Proposed Stations
- CSXT ROW (County Parcel Data)
- City/County Boundary

**Appendix R  
 Vibration Analysis  
 Area 3C:  
 Fredericksburg**



\\dcis-main\gis\_data\GIS\Projects\0115-46\_VA\_Dep\_of\_Rails-Public\_Transportation\0239056\_RAPS-4\ITDev-Concept\Eng\map\_docs\mxd\01EIS\Tech\_Reports\Noise and Vibration\Web\_Versions\Noise and Vibration\Area3C\_Mapbook\_11x17\_WEB.mxd | Last Updated: 08.16.2017