

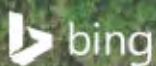


0 250 500
 Feet
 1 inch = 500 feet
 @ 11 x 17 inches
 Projection: Lambert Conformal Conic
 State Plane Virginia North FIPS 4501 Feet
 North American Datum of 1983
 Imagery/Basemap Source: 2015 Bing
 Aerial Imagery; ESRI World Transportation

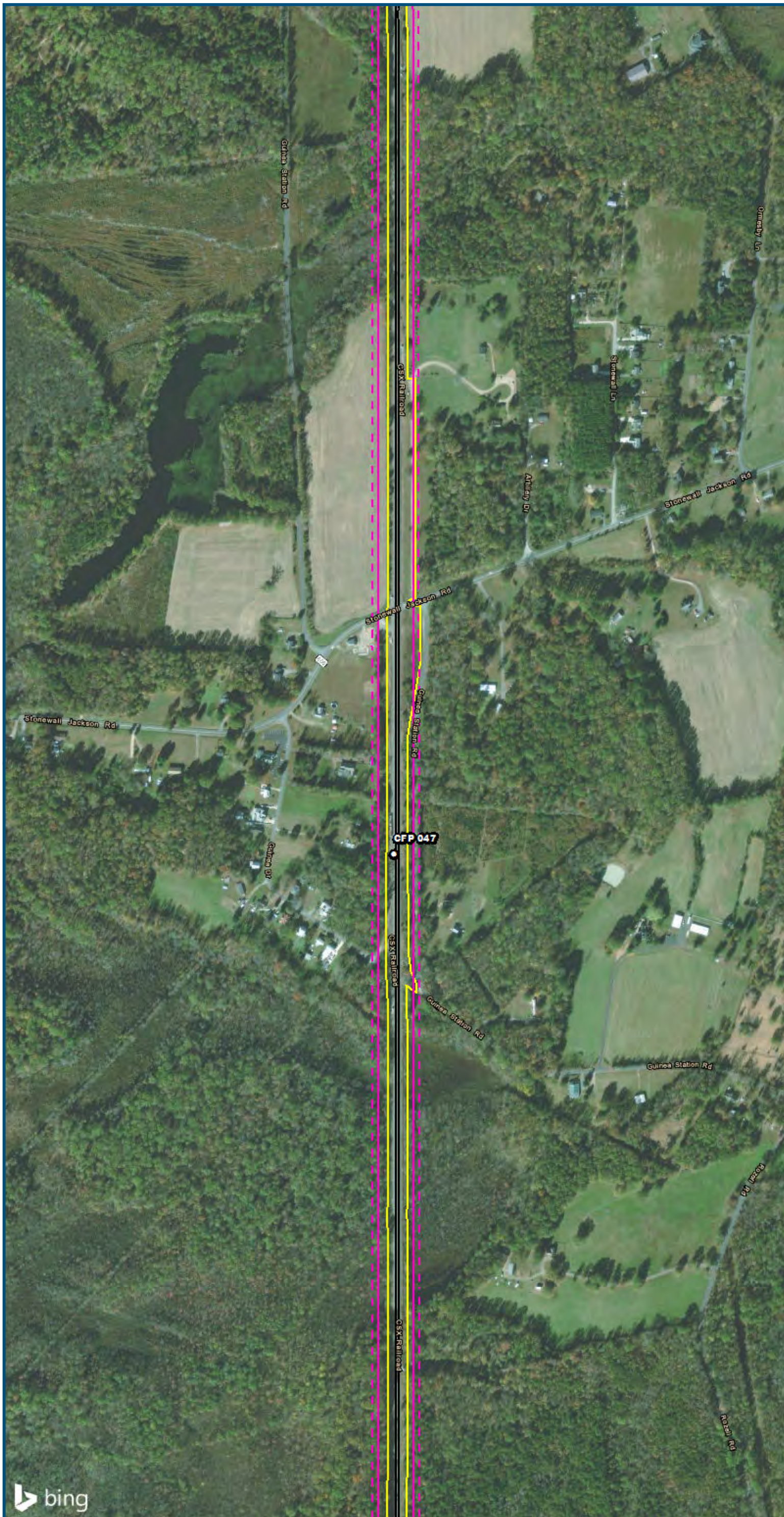
Legend

- Category 2 Vibration Impact Contour
- Category 3 Vibration Impact Contour
- Category 2 Vibration Impacts
- Category 3 Vibration Impacts
- CSXT Mileposts
- Track - Existing
- Stations
- Proposed Stations
- CSXT ROW (County Parcel Data)
- City/County Boundary

**Appendix S
 Vibration Analysis
 Area 4:
 Central Virginia**



\\dcis-main\gis_data\GIS\Projects\0115-46_VA.Dep.of.Rails-Public\Transportation\0230756_RAPS-4\IT-Dev-Concept\Eng\map_docs\mxd\01EIS\Tech_Reports\Noise and Vibration\Web_Versions\Noise and Vibration\Mapbook_11x17_WEB.mxd | Last Updated: 08/21/2017

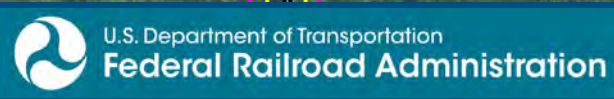


0 250 500
 Feet
 1 inch = 500 feet
 @ 11 x 17 inches
 Projection: Lambert Conformal Conic
 State Plane Virginia North FIPS 4501 Feet
 North American Datum of 1983
 Imagery/Basemap Source: 2015 Bing
 Aerial Imagery; ESRI World Transportation

Legend

- Category 2 Vibration Impact Contour
- Category 3 Vibration Impact Contour
- Category 2 Vibration Impacts
- Category 3 Vibration Impacts
- CSXT Mileposts
- Track - Existing
- Stations
- Proposed Stations
- CSXT ROW (County Parcel Data)
- City/County Boundary

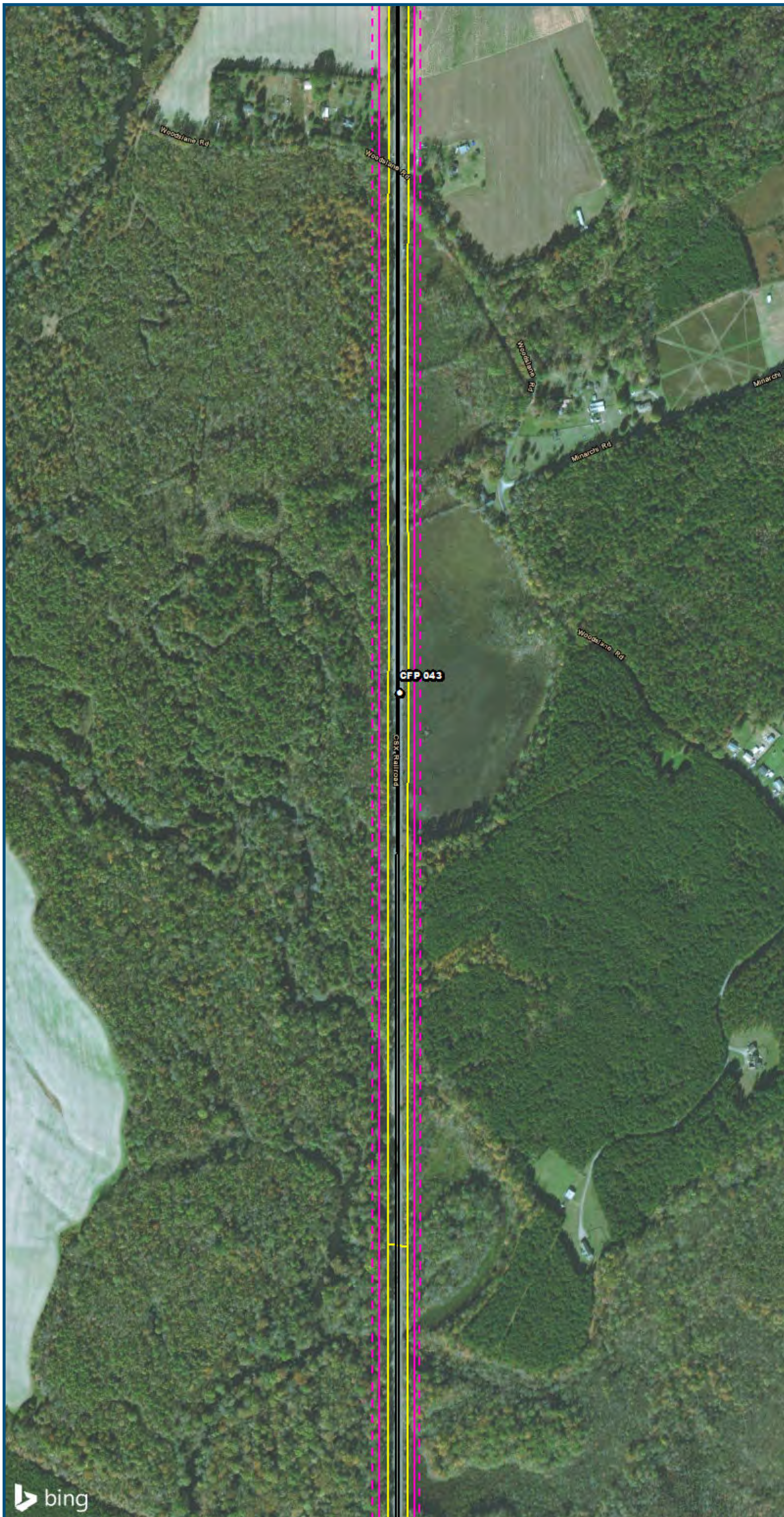
**Appendix S
 Vibration Analysis
 Area 4:
 Central Virginia**



www.DC2RVArail.com



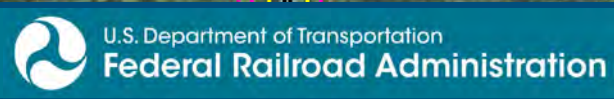
V:\GIS\main\gis_data\GIS\Projects\0115_46_VA\DeptofRail-PublicTransportation\0239056_RAPS-4AltDev-Concept\Eng\map_docs\mxd\01EIS\Tech_Reports\NoiseandVibration\Web_Versions\NoiseandVibration\Mapbook_11x17_WEB.mxd | Last Updated: 08/21/2017



0 250 500
 Feet
 1 inch = 500 feet
 @ 11 x 17 inches
 Projection: Lambert Conformal Conic
 State Plane Virginia North FIPS 4501 Feet
 North American Datum of 1983
 Imagery/Basemap Source: 2015 Bing
 Aerial Imagery; ESRI World Transportation

- Legend**
- Category 2 Vibration Impact Contour
 - Category 3 Vibration Impact Contour
 - Category 2 Vibration Impacts
 - Category 3 Vibration Impacts
 - CSXT Mileposts
 - Track - Existing
 - Stations
 - Proposed Stations
 - CSXT ROW (County Parcel Data)
 - City/County Boundary

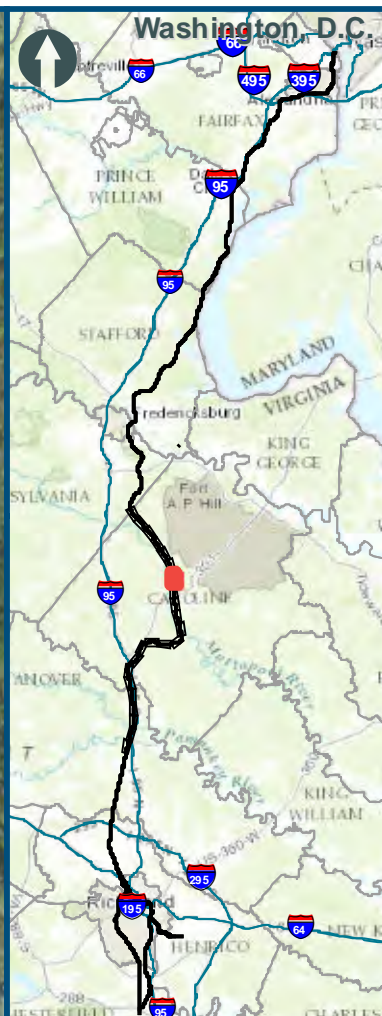
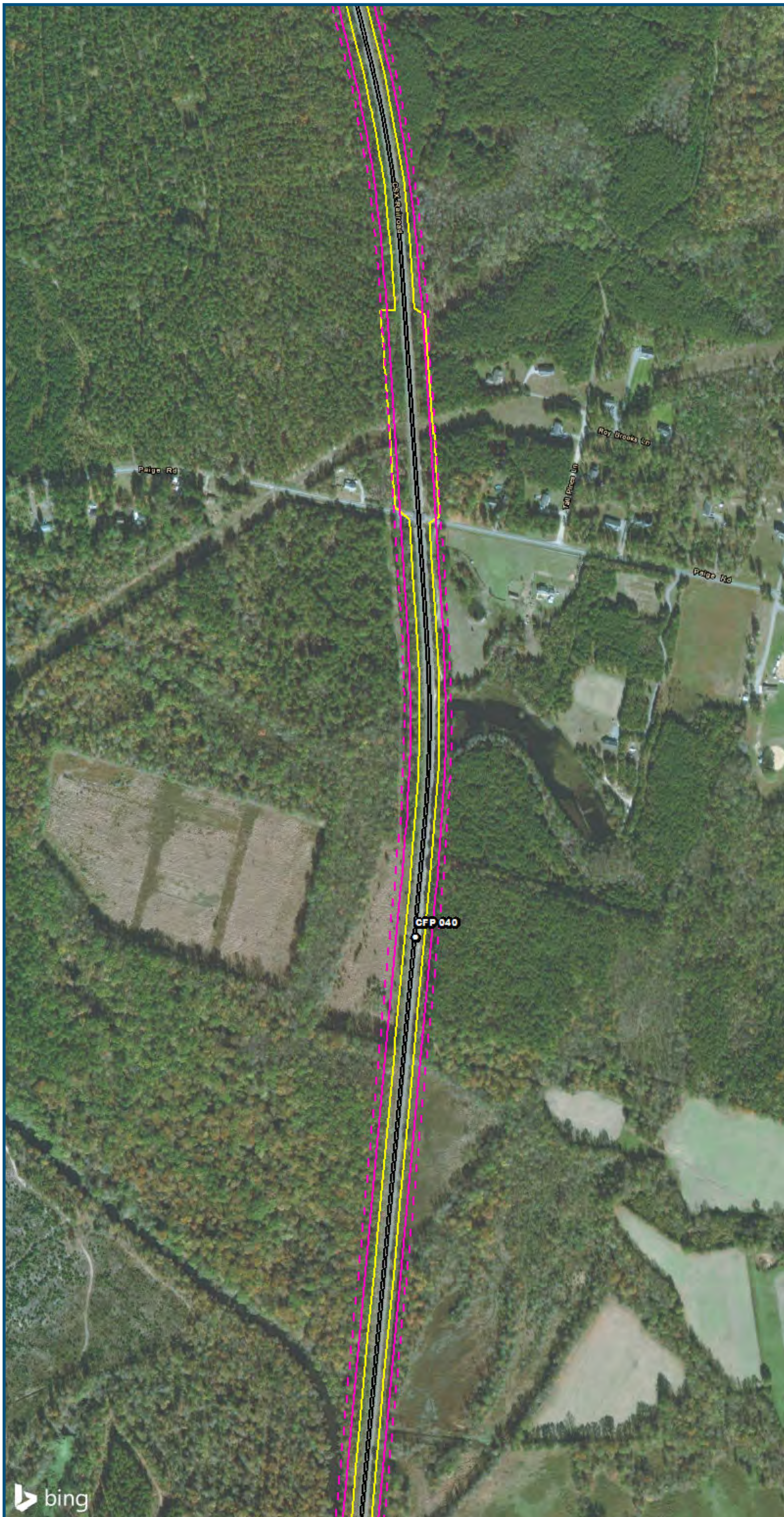
Appendix S
Vibration Analysis
Area 4:
Central Virginia



www.DC2RVArail.com



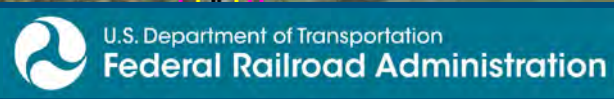
\\cis-main\gis_data\GIS\Projects\0115-46_VA Dept of Rail-Public Transportation\0239056_RAPS-4Alt Dev-Concept\Eng\map_docs\mxd\01EIS\Tech_Reports\Noise and Vibration\Web_Versions\Noise and Vibration\Area4_Mapbook_11x17_WEB.mxd | Last Updated: 08/21/2017



0 250 500
 Feet
 1 inch = 500 feet
 @ 11 x 17 inches
 Projection: Lambert Conformal Conic
 State Plane Virginia North FIPS 4501 Feet
 North American Datum of 1983
 Imagery/Basemap Source: 2015 Bing
 Aerial Imagery; ESRI World Transportation

- Legend**
- - - Category 2 Vibration Impact Contour
 - Category 3 Vibration Impact Contour
 - Category 2 Vibration Impacts
 - Category 3 Vibration Impacts
 - CSXT Mileposts
 - Track - Existing
 - Stations
 - Proposed Stations
 - CSXT ROW (County Parcel Data)
 - City/County Boundary

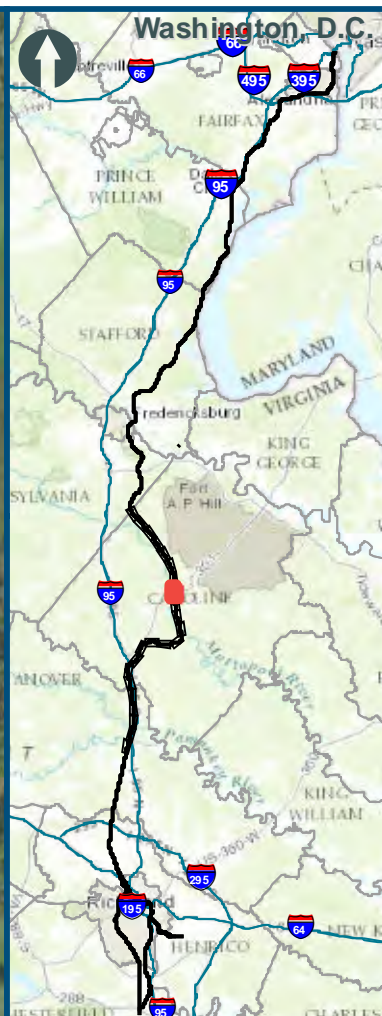
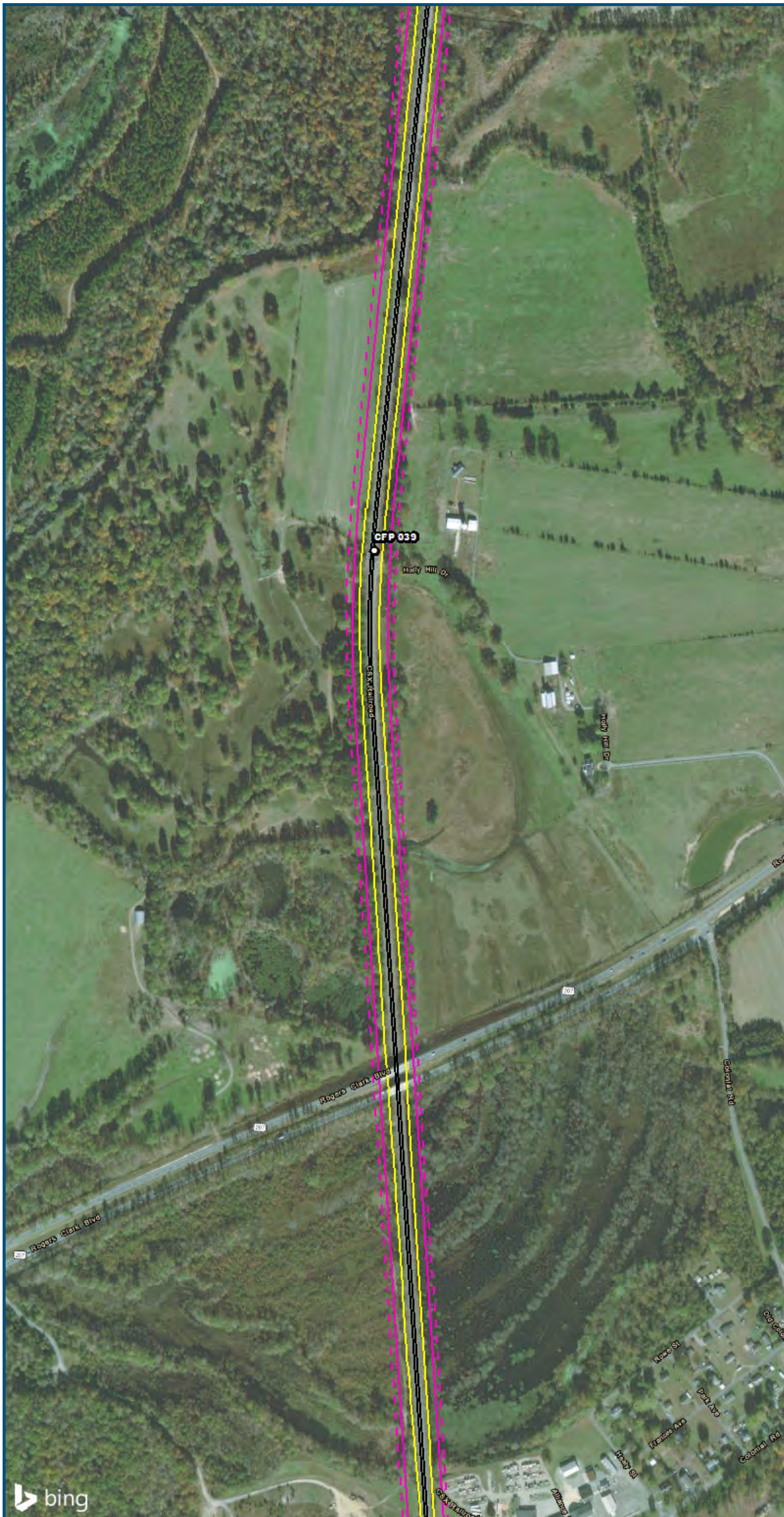
**Appendix S
 Vibration Analysis
 Area 4:
 Central Virginia**



www.DC2RVArail.com



\\c:\main\gis_data\GIS\Projects\0115_46_VA\Deplo\Rail\Public\Transportation\0239056_RAPS-4AltDev-Concept\Eng\map_docs\mxd\01EIS\Tech_Reports\NoiseandVibration\Web_Versions\NoiseandVibration\Area4_Mapbook_11x17_WEB.mxd | Last Updated: 08/21/2017



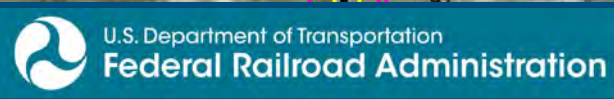
0 250 500
 Feet
 1 inch = 500 feet
 @ 11 x 17 inches
 Projection: Lambert Conformal Conic
 State Plane Virginia North FIPS 4501 Feet
 North American Datum of 1983
 Imagery/Basemap Source: 2015 Bing
 Aerial Imagery; ESRI World Transportation

Legend

- Category 2 Vibration Impact Contour
- Category 3 Vibration Impact Contour
- Category 2 Vibration Impacts
- Category 3 Vibration Impacts
- CSXT Mileposts
- Track - Existing
- Stations
- Proposed Stations
- CSXT ROW (County Parcel Data)
- City/County Boundary

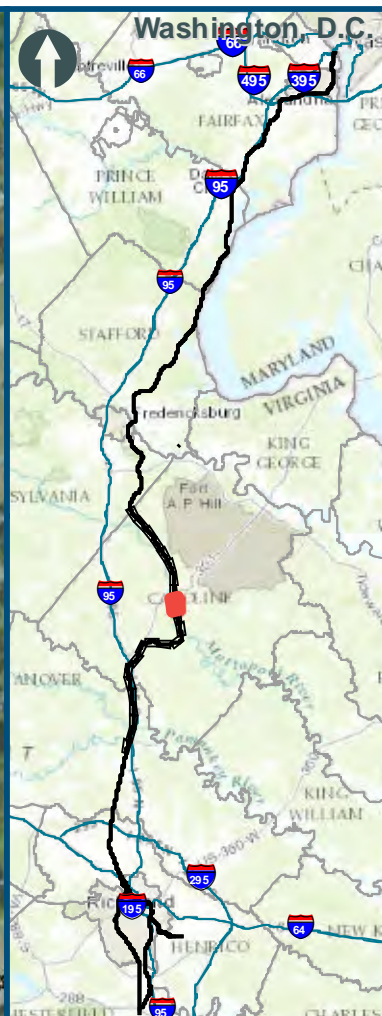
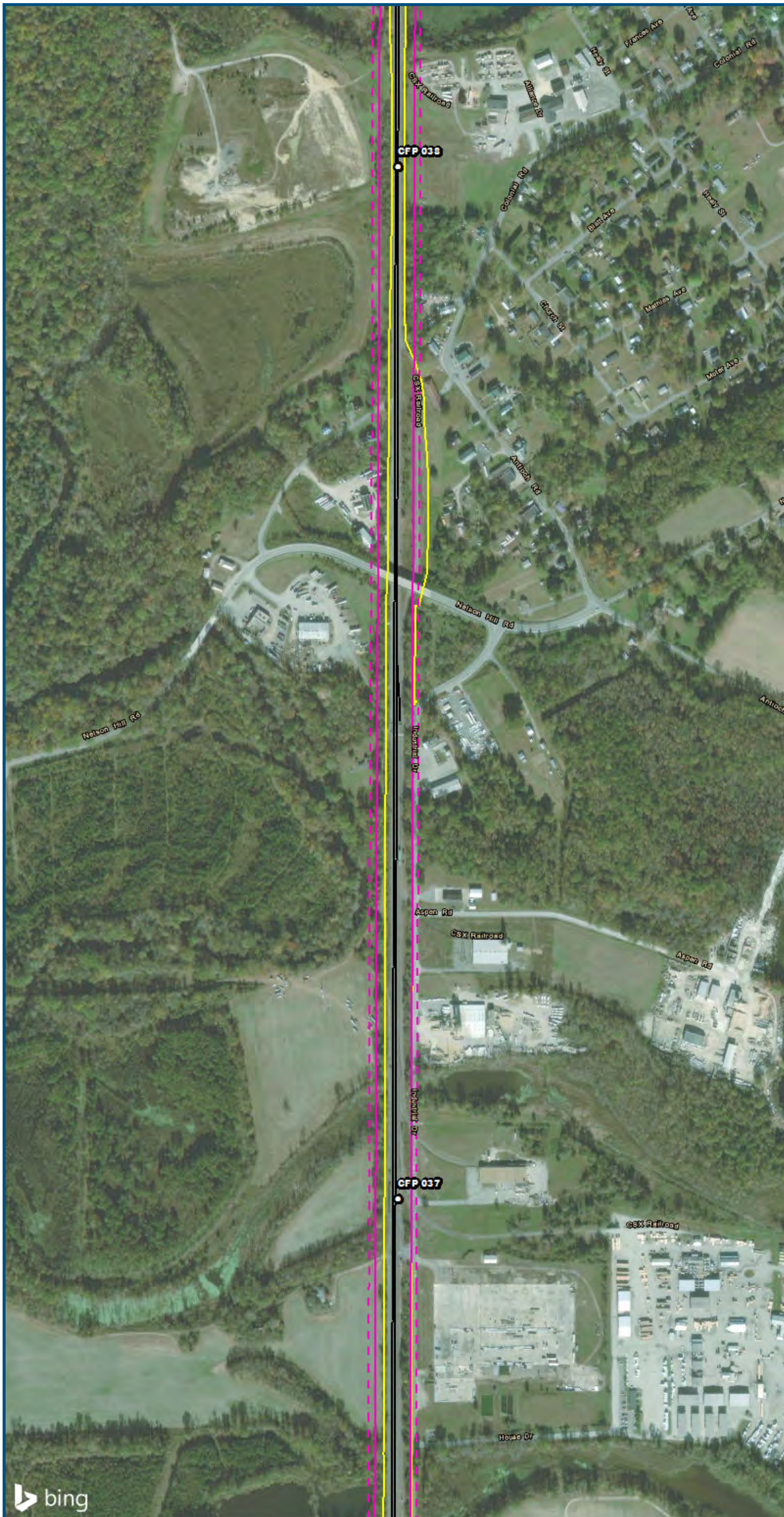
**Appendix S
 Vibration Analysis
 Area 4:
 Central Virginia**

\\dcis-main\gis_data\GIS\Projects\0115-46_VA\DeptofRails-PublicTransportation\0239056_RAPS-4AltDev-ConceptEng\map_docs\mxd\0115-46_VA\Versions\NoiseandVibration\Mapbook_11x17_WEB.mxd | Last Updated: 08/21/2017



www.DC2RVArail.com





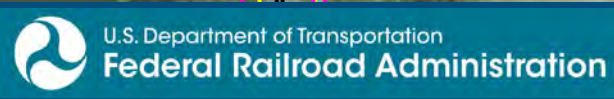
0 250 500
 Feet
 1 inch = 500 feet
 @ 11 x 17 inches
 Projection: Lambert Conformal Conic
 State Plane Virginia North FIPS 4501 Feet
 North American Datum of 1983
 Imagery/Basemap Source: 2015 Bing
 Aerial Imagery; ESRI World Transportation

Legend

- Category 2 Vibration Impact Contour
- Category 3 Vibration Impact Contour
- Category 2 Vibration Impacts
- Category 3 Vibration Impacts
- CSXT Mileposts
- Track - Existing
- Stations
- Proposed Stations
- CSXT ROW (County Parcel Data)
- City/County Boundary

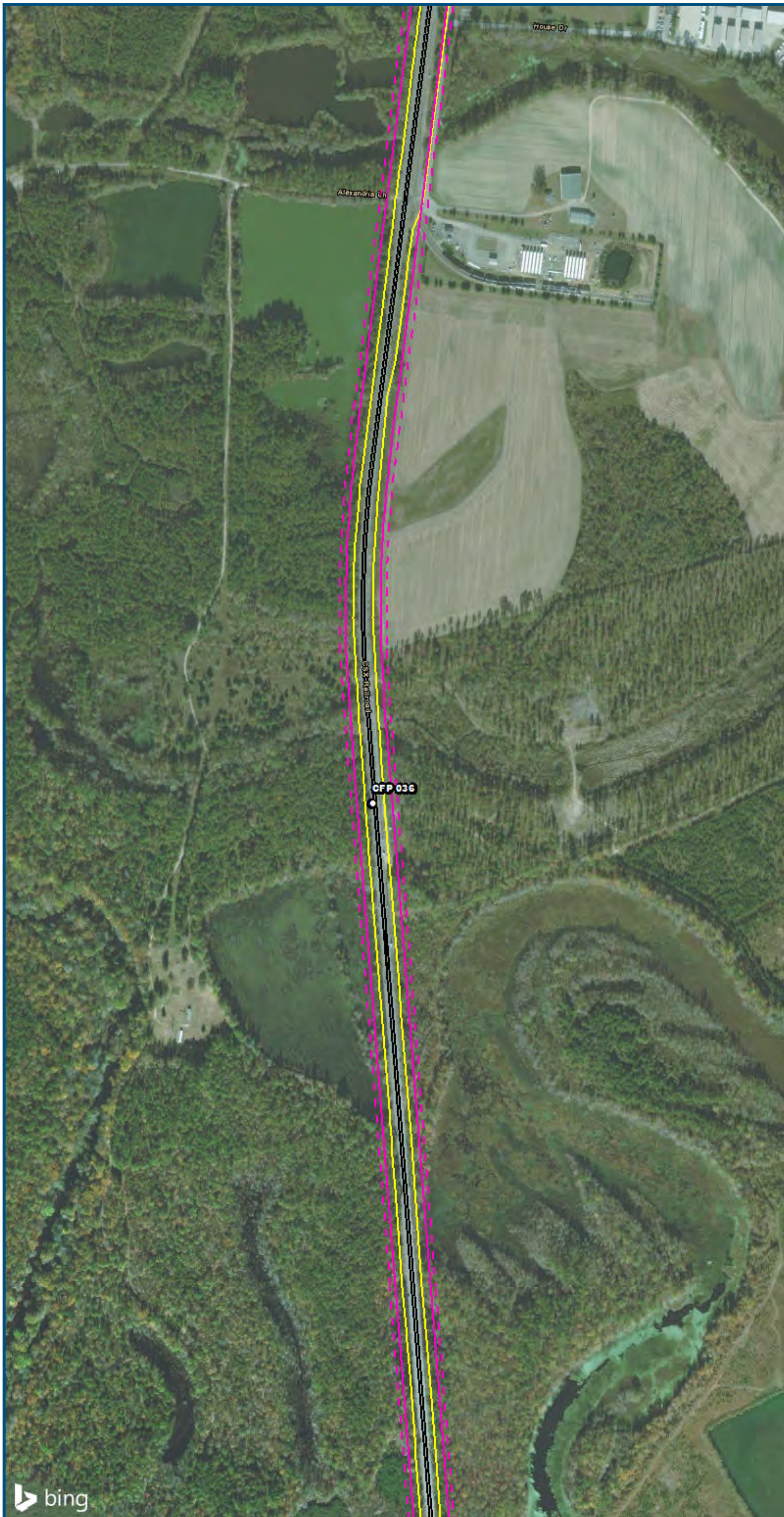
**Appendix S
 Vibration Analysis
 Area 4:
 Central Virginia**

\\dcis-main\gis_data\GIS\Projects\0115-46_VA_DepotRail-PublicTransportation\02309056_RAPS-4AltDev-ConceptEng\map_docs\mxd\01EIS\Tech_Reports\NoiseandVibration\Map_Web_Versions\Mapbook_11x17_WEB.mxd | Last Updated: 08/21/2017



www.DC2RVArail.com



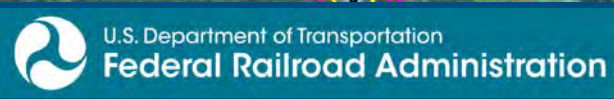


0 250 500
 Feet
 1 inch = 500 feet
 @ 11 x 17 inches
 Projection: Lambert Conformal Conic
 State Plane Virginia North FIPS 4501 Feet
 North American Datum of 1983
 Imagery/Basemap Source: 2015 Bing
 Aerial Imagery; ESRI World Transportation

Legend

- Category 2 Vibration Impact Contour
- Category 3 Vibration Impact Contour
- Category 2 Vibration Impacts
- Category 3 Vibration Impacts
- CSXT Mileposts
- Track - Existing
- Stations
- Proposed Stations
- CSXT ROW (County Parcel Data)
- City/County Boundary

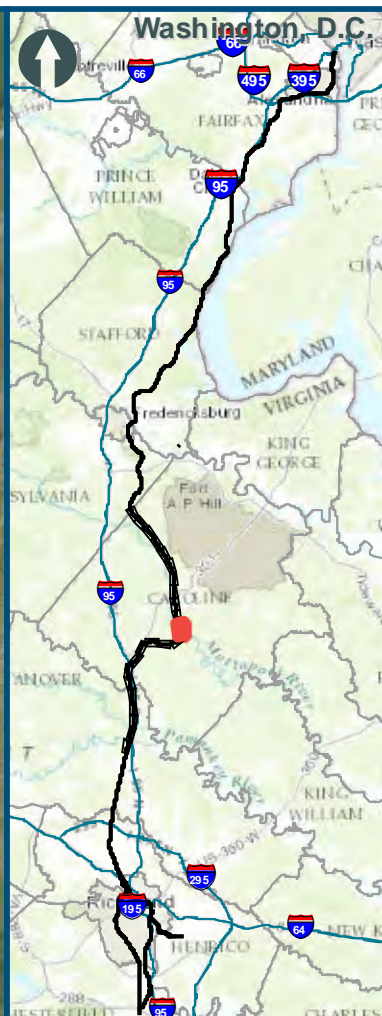
**Appendix S
 Vibration Analysis
 Area 4:
 Central Virginia**



www.DC2RVArail.com



\\vlis-main\gis_data\GIS\Projects\0115-46_VA_Dep\toRail-Public\Transportation\0239056_RAPS-4\ITDev-Concept\Eng\map_docs\mxd\01EIS\Tech_Reports\Noise and Vibration\Web_Versions\Noise and Vibration\Mapbook_11x17_WEB.mxd | Last Updated: 08/21/2017

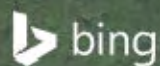


0 250 500
 Feet
 1 inch = 500 feet
 @ 11 x 17 inches
 Projection: Lambert Conformal Conic
 State Plane Virginia North FIPS 4501 Feet
 North American Datum of 1983
 Imagery/Basemap Source: 2015 Bing
 Aerial Imagery; ESRI World Transportation

- Legend**
- Category 2 Vibration Impact Contour
 - Category 3 Vibration Impact Contour
 - Category 2 Vibration Impacts
 - Category 3 Vibration Impacts
 - CSXT Mileposts
 - Track - Existing
 - Stations
 - Proposed Stations
 - CSXT ROW (County Parcel Data)
 - City/County Boundary

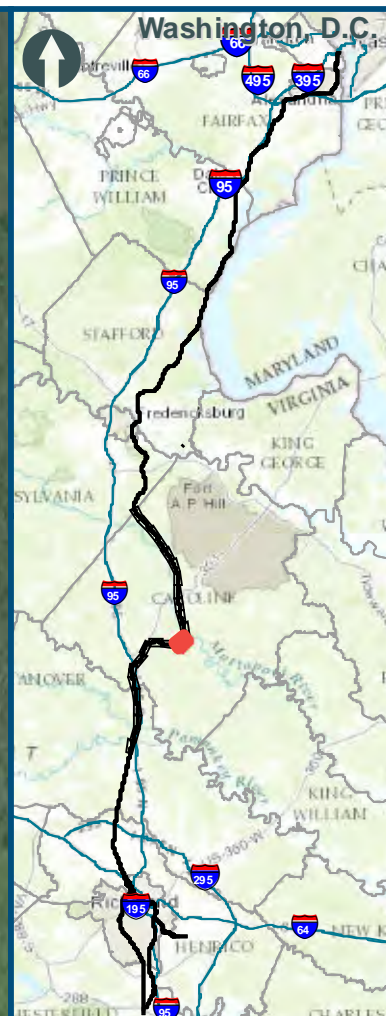
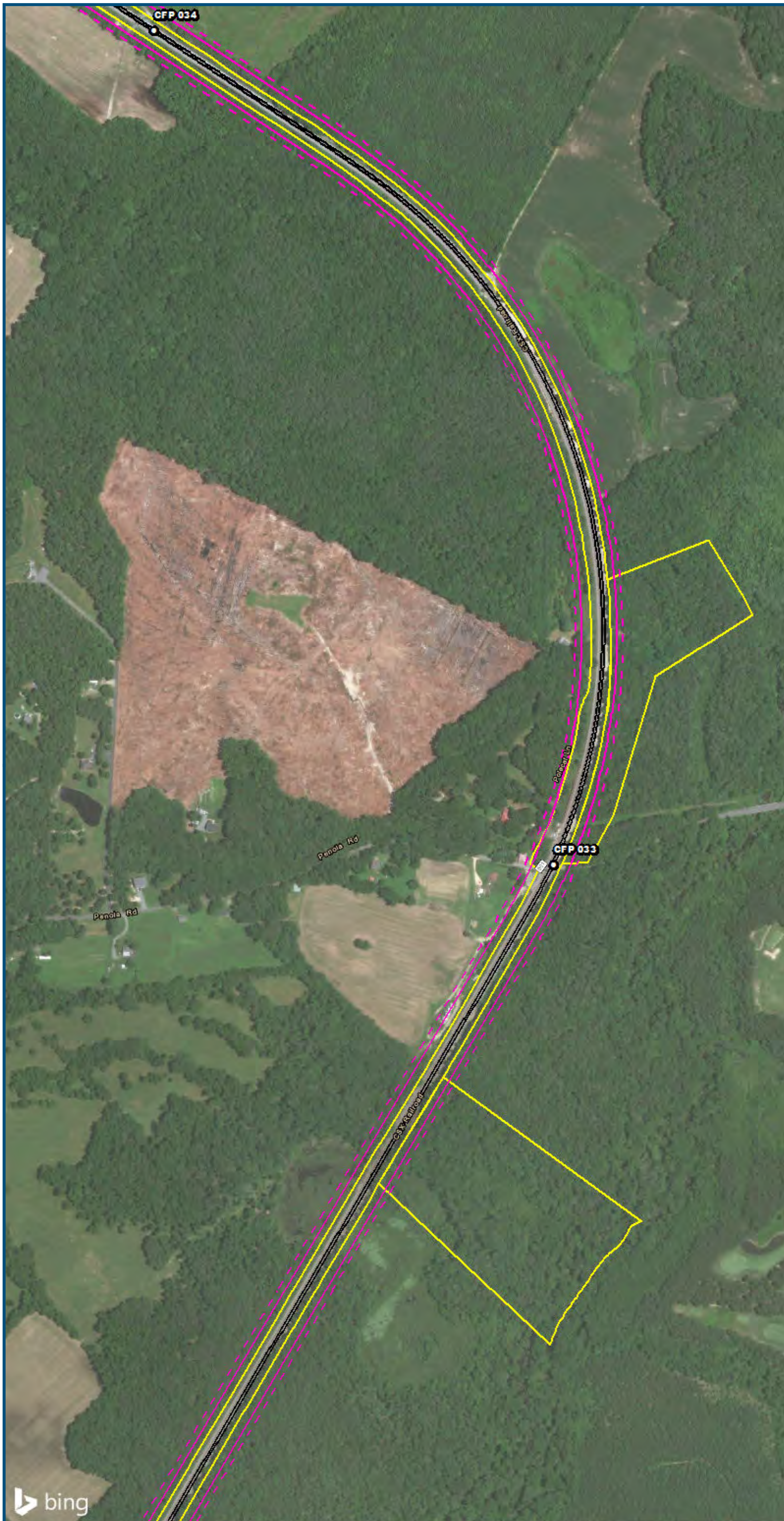
Appendix S
Vibration Analysis
Area 4:
Central Virginia

\\c:\main\gis_data\GIS\Projects\0115-46_VA\DeptofRalls-Public\Transportation\0239056_RAPS-4AltDev-Concept\Eng\map_docs\mxd\0115-46_VA\WEB.mxd | Last Updated: 08/21/2017



www.DC2RVArail.com



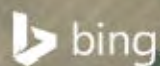


0 250 500
 Feet
 1 inch = 500 feet
 @ 11 x 17 inches
 Projection: Lambert Conformal Conic
 State: Plane Virginia North FIPS 4501 Feet
 North American Datum of 1983
 Imagery/Basemap Source: 2015 Bing
 Aerial Imagery; ESRI World Transportation

- Legend**
- Category 2 Vibration Impact Contour
 - Category 3 Vibration Impact Contour
 - Category 2 Vibration Impacts
 - Category 3 Vibration Impacts
 - CSXT Mileposts
 - Track - Existing
 - Stations
 - Proposed Stations
 - CSXT ROW (County Parcel Data)
 - City/County Boundary

**Appendix S
 Vibration Analysis
 Area 4:
 Central Virginia**

\\c:\main\gis_data\GIS\Projects\0115_46_VA\DeptofRalls-PublicTransportation\0239056_RAPS-4AltDev-ConceptEngng\map_docs\mxd\01EIS\Tech_Reports\NoiseandVibrationWeb_Versions\Vibration_Area4_Mapbook_11x17_WEB.mxd | Last Updated: 08/21/2017



www.DC2RVArail.com





0 250 500
 Feet
 1 inch = 500 feet
 @ 11 x 17 inches
 Projection: Lambert Conformal Conic
 State Plane Virginia North FIPS 4501 Feet
 North American Datum of 1983
 Imagery/Basemap Source: 2015 Bing
 Aerial Imagery; ESRI World Transportation

Legend

- Category 2 Vibration Impact Contour
- Category 3 Vibration Impact Contour
- Category 2 Vibration Impacts
- Category 3 Vibration Impacts
- CSXT Mileposts
- Track - Existing
- Stations
- Proposed Stations
- CSXT ROW (County Parcel Data)
- City/County Boundary

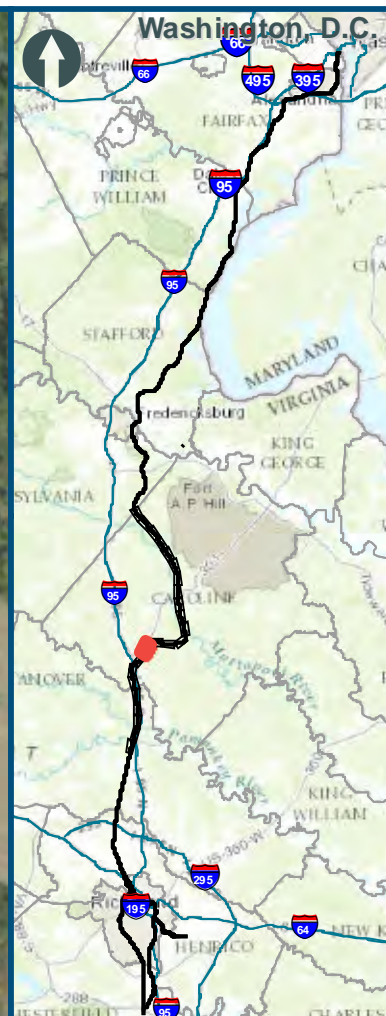
Appendix S
Vibration Analysis
Area 4:
Central Virginia

\\cis-main\gis_data\GIS\Projects\0115-46_VA_Dep\ofRail-Public\Transportation\0239056_RAPS-4AltDev-Concep\Eng\map_docs\mxd\01EIS\Tech_Reports\Noise and Vibration\Web_Versions\Mapbook_11x17_WEB.mxd | Last Updated: 08/21/2017



www.DC2RVArail.com





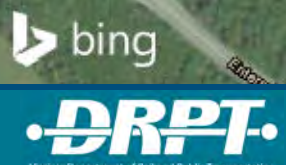
0 250 500
 Feet
 1 inch = 500 feet
 @ 11 x 17 inches
 Projection: Lambert Conformal Conic
 State Plane Virginia North FIPS 4501 Feet
 North American Datum of 1983
 Imagery/Basemap Source: 2015 Bing
 Aerial Imagery; ESRI World Transportation

Legend

- Category 2 Vibration Impact Contour
- Category 3 Vibration Impact Contour
- Category 2 Vibration Impacts
- Category 3 Vibration Impacts
- CSXT Mileposts
- Track - Existing
- Stations
- Proposed Stations
- CSXT ROW (County Parcel Data)
- City/County Boundary

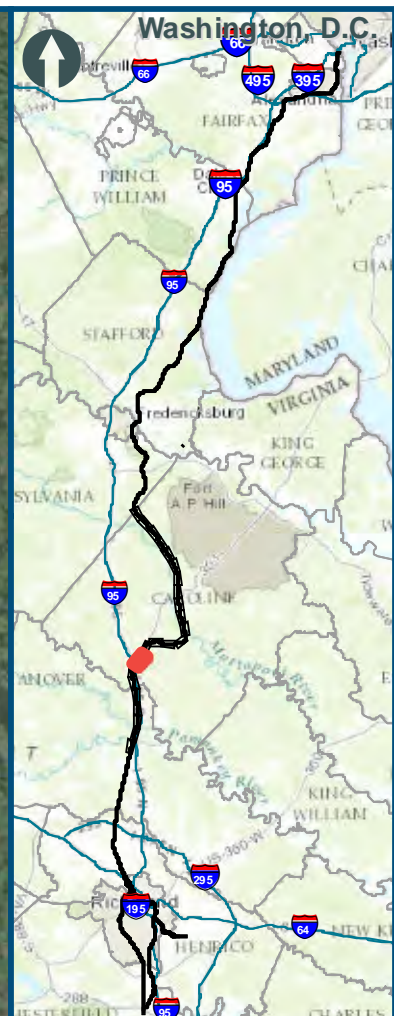
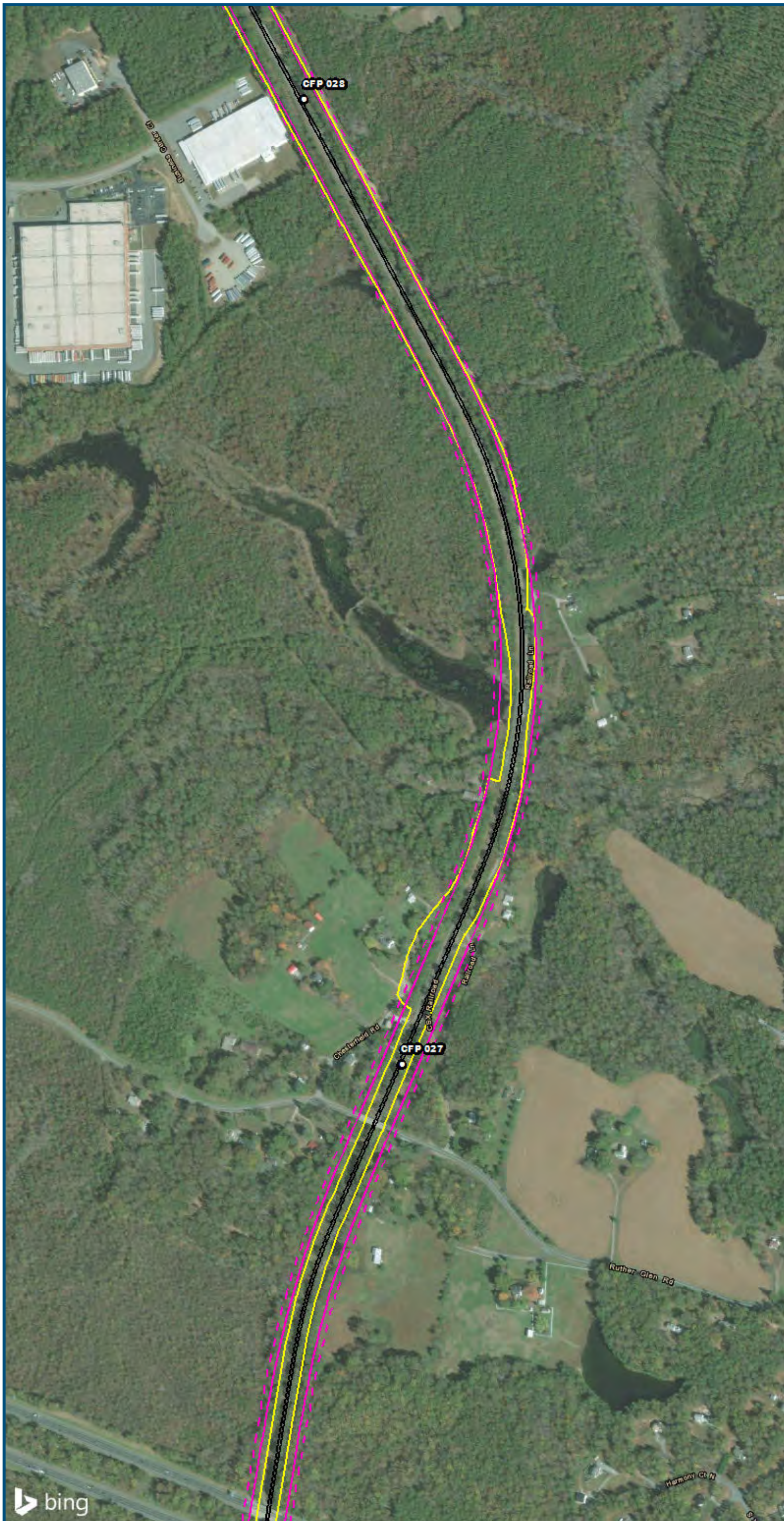
Appendix S
Vibration Analysis
Area 4:
Central Virginia

\\cis-main\gis_data\GIS\Projects\0115-46_VA\DeptofRalls-PublicTransportation\0230756_RAPS-4AltDev-ConceptEng\map_docs\mxd\01EIS\Tech_Reports\NoiseandVibration\Web_Versions\NoiseandVibration\Mapbook_11x17_WEB.mxd | Last Updated: 08/21/2017



www.DC2RVArail.com





0 250 500
 Feet
 1 inch = 500 feet
 @ 11 x 17 inches
 Projection: Lambert Conformal Conic
 State Plane Virginia North FIPS 4501 Feet
 North American Datum of 1983
 Imagery/Basemap Source: 2015 Bing
 Aerial Imagery; ESRI World Transportation

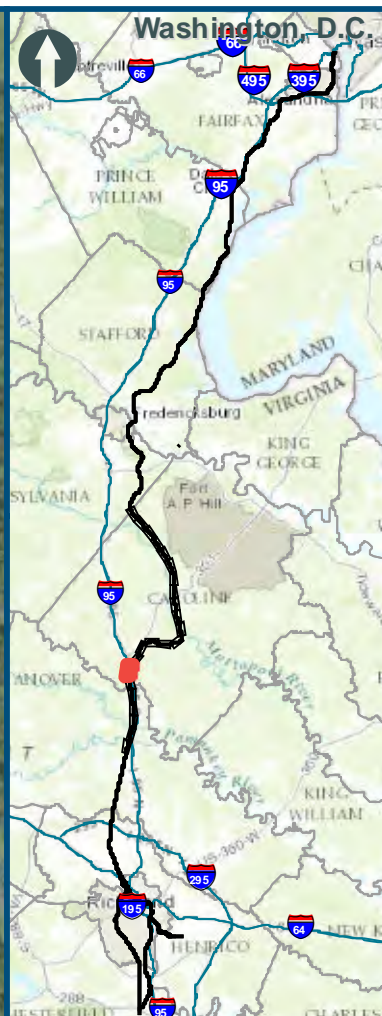
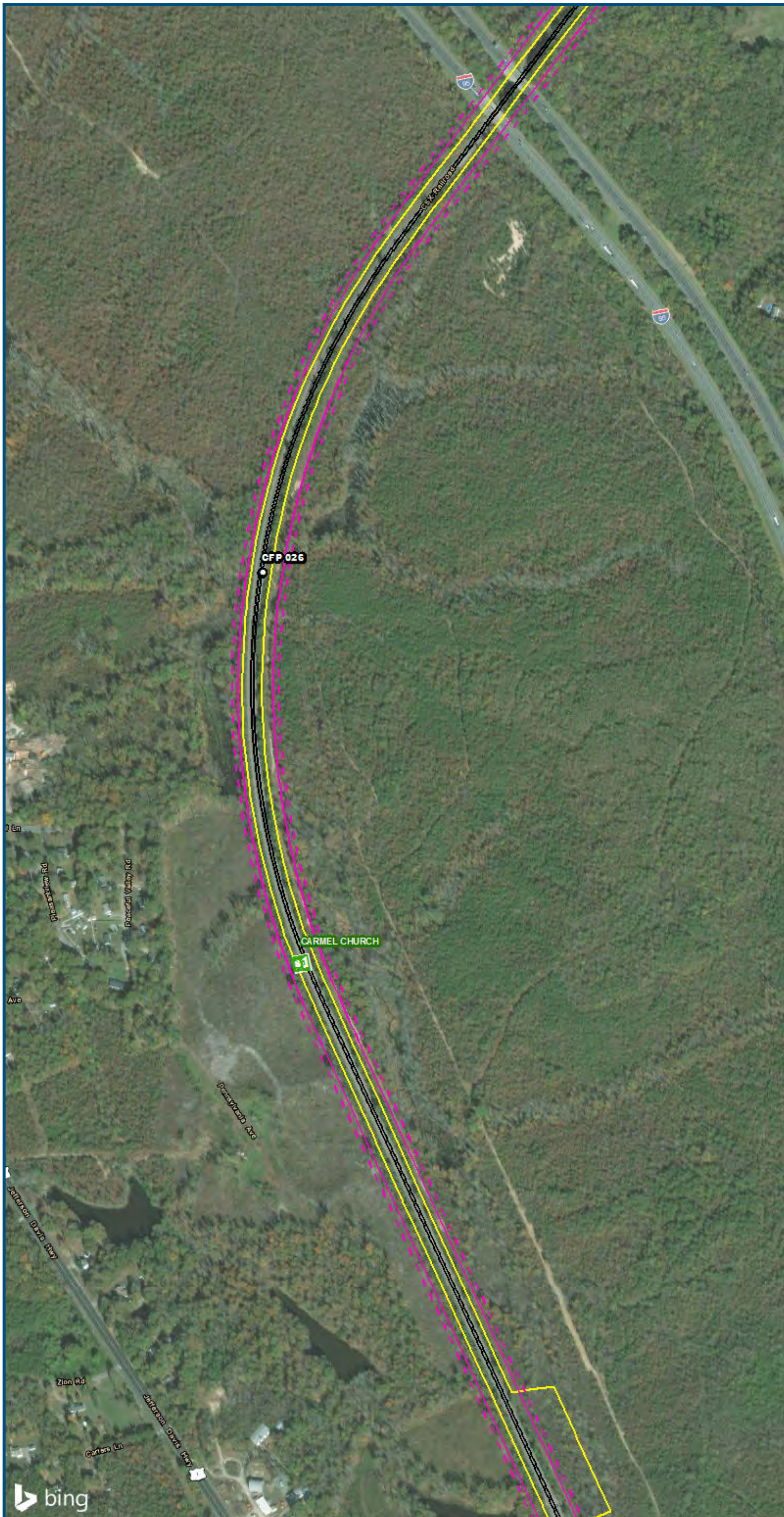
Legend

- Category 2 Vibration Impact Contour
- Category 3 Vibration Impact Contour
- Category 2 Vibration Impacts
- Category 3 Vibration Impacts
- CSXT Mileposts
- Track - Existing
- Stations
- Proposed Stations
- CSXT ROW (County Parcel Data)
- City/County Boundary

**Appendix S
 Vibration Analysis
 Area 4:
 Central Virginia**



\\dcis-main\gis_data\GIS\Projects\0115-46_VA_Dep\ofRail-Public\Transportation\0239056_RAPS-4AltDev-Concept\Eng\map_docs\mxd\01EIS\Tech_Reports\Noise and Vibration\Web_Versions\Noise and Vibration\Mapbook_11x17_WEB.mxd | Last Updated: 08/21/2017



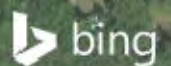
0 250 500
 Feet
 1 inch = 500 feet
 @ 11 x 17 inches
 Projection: Lambert Conformal Conic
 State Plane Virginia North FIPS 4501 Feet
 North American Datum of 1983
 Imagery/Basemap Source: 2015 Bing
 Aerial Imagery; ESRI World Transportation

Legend

- Category 2 Vibration Impact Contour
- Category 3 Vibration Impact Contour
- Category 2 Vibration Impacts
- Category 3 Vibration Impacts
- CSXT Mileposts
- Track - Existing
- Stations
- Proposed Stations
- CSXT ROW (County Parcel Data)
- City/County Boundary

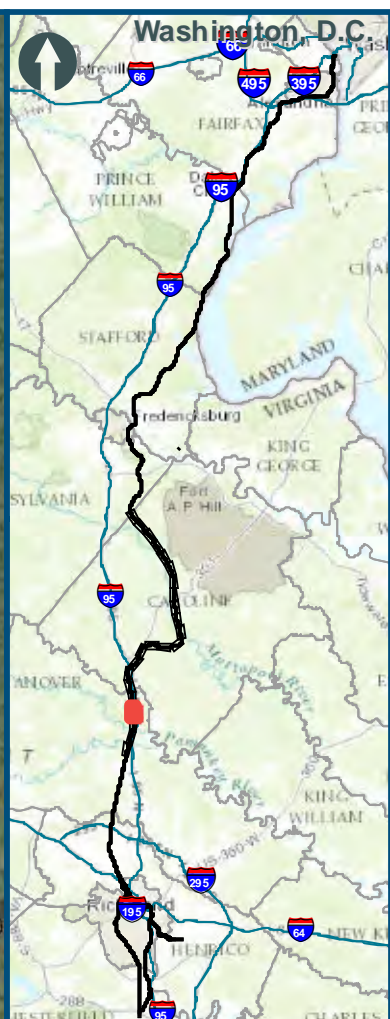
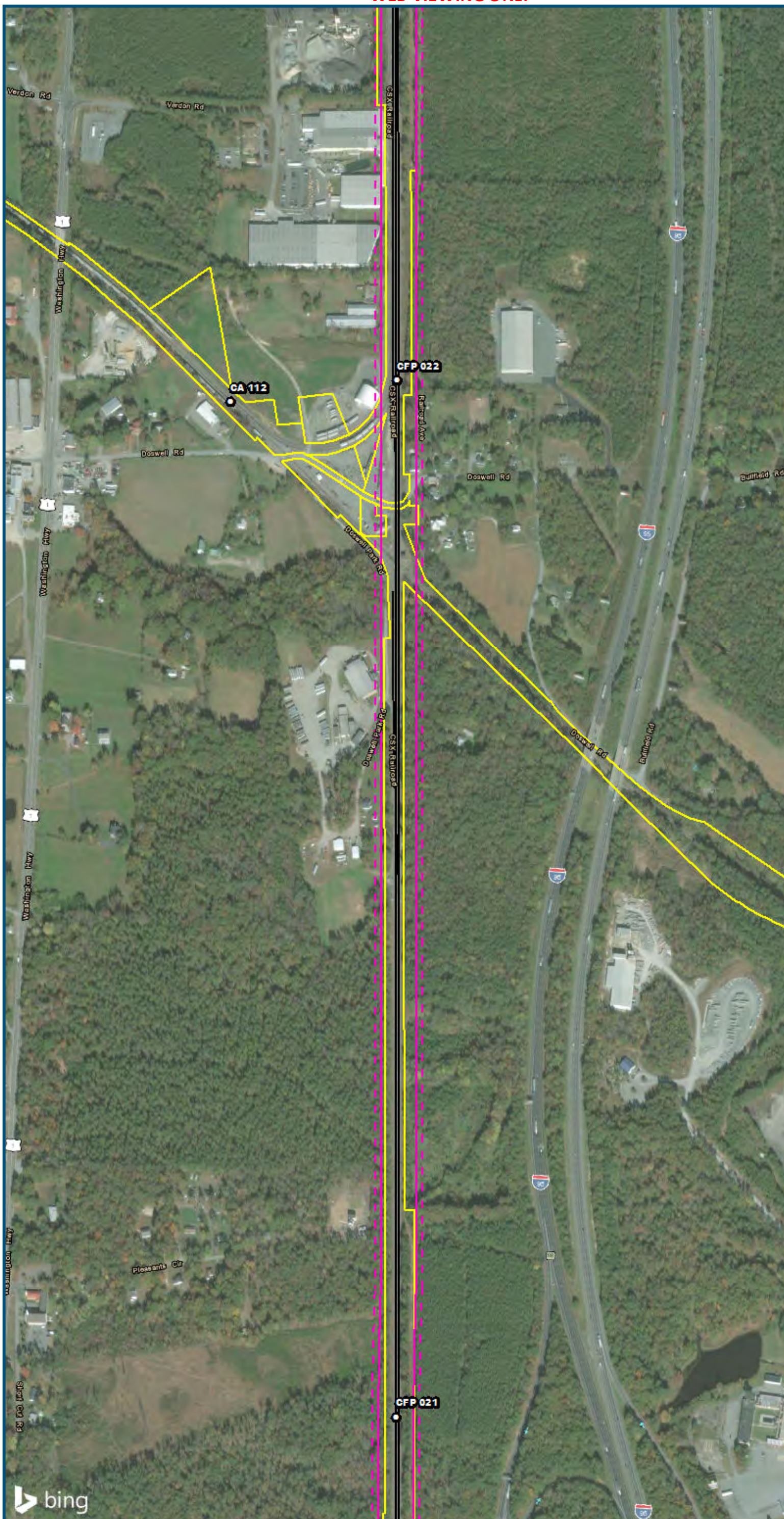
**Appendix S
 Vibration Analysis
 Area 4:
 Central Virginia**

\\vlis-main\gis_data\GIS\Projects\0115-46_VA_DeptoRail-PublicTransportation\0239056_RAPS-4AltDev-ConceptEng\map_docs\mxd\01EIS\Tech_Reports\NoiseandVibration\Web_Versions\NoiseandVibration\Area4_Mapbook_11x17_WEB.mxd | Last Updated: 08/21/2017



www.DC2RVArail.com

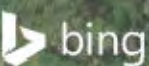




0 250 500
 Feet
 1 inch = 500 feet
 @ 11 x 17 inches
 Projection: Lambert Conformal Conic
 State Plane Virginia North FIPS 4501 Feet
 North American Datum of 1983
 Imagery/Basemap Source: 2015 Bing
 Aerial Imagery; ESRI World Transportation

- Legend**
- Category 2 Vibration Impact Contour
 - Category 3 Vibration Impact Contour
 - Category 2 Vibration Impacts
 - Category 3 Vibration Impacts
 - CSXT Mileposts
 - Track - Existing
 - Stations
 - Proposed Stations
 - CSXT ROW (County Parcel Data)
 - City/County Boundary

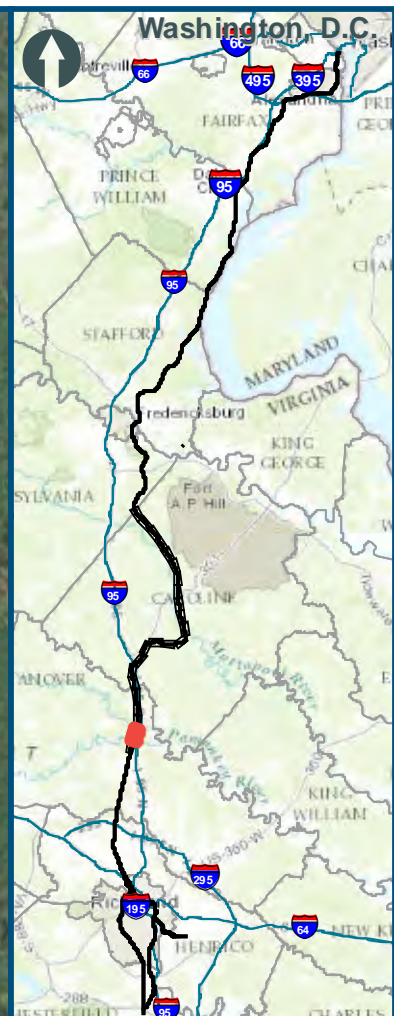
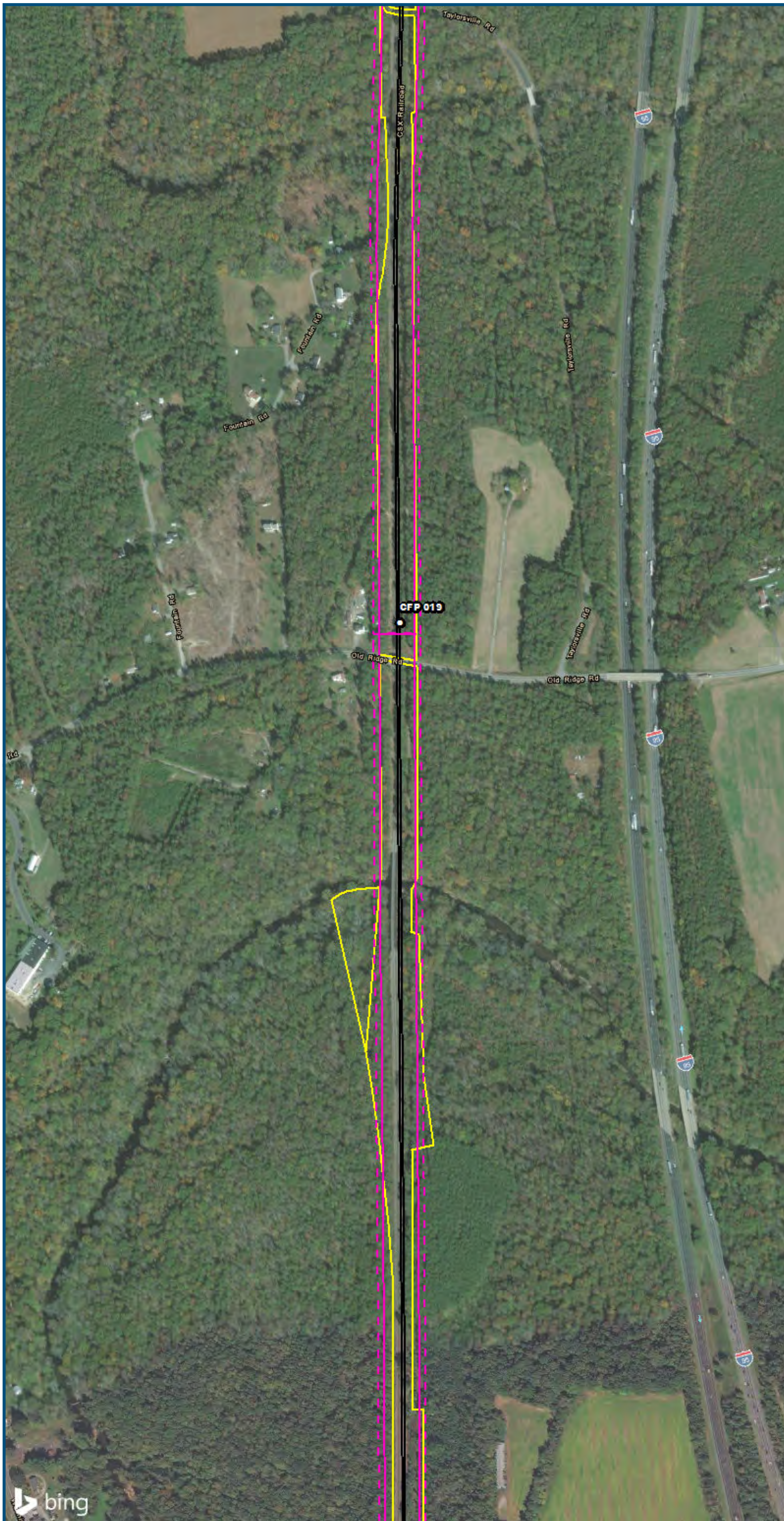
Appendix S
Vibration Analysis
Area 4:
Central Virginia



www.DC2RVArail.com



\\dcis-main\gis_data\GIS\Projects\0115-46_VA\Depot\Rail-Public\Transportation\0239056_RAPS-4\IT\Dev-Concept\Eng\map_docs\mxd\01EIS\Tech_Reports\Noise and Vibration\Web_Versions\Noise and Vibration\Mapbook_11x17_WEB.mxd | Last Updated: 08/21/2017



0 250 500
 Feet
 1 inch = 500 feet
 @ 11 x 17 inches
 Projection: Lambert Conformal Conic
 State Plane Virginia North FIPS 4501 Feet
 North American Datum of 1983
 Imagery/Basemap Source: 2015 Bing
 Aerial Imagery; ESRI World Transportation

Legend

- Category 2 Vibration Impact Contour
- Category 3 Vibration Impact Contour
- Category 2 Vibration Impacts
- Category 3 Vibration Impacts
- CSXT Mileposts
- Track - Existing
- Stations
- Proposed Stations
- CSXT ROW (County Parcel Data)
- City/County Boundary

**Appendix S
 Vibration Analysis
 Area 4:
 Central Virginia**

\\c:\main\gis_data\GIS\Projects\0115-46_VA_DepotRail-PublicTransportation\0239056_RAPS-4AltDev-ConceptEng\map_docs\mxd\01EIS\Tech_Reports\NoiseandVibration\Map_Book_11x17_WEB.mxd | Last Updated: 08/21/2017

