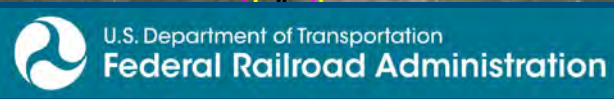


0 250 500
 Feet
 1 inch = 500 feet
 @ 11 x 17 inches
 Projection: Lambert Conformal Conic
 State Plane Virginia North FIPS 4501 Feet
 North American Datum of 1983
 Imagery/Basemap Source: 2015 Bing
 Aerial Imagery; ESRI World Transportation

- Legend**
- Category 2 Vibration Impact Contour
 - Category 3 Vibration Impact Contour
 - Category 2 Vibration Impacts
 - Category 3 Vibration Impacts
 - CSXT Mileposts
 - Track - Existing
 - 1 Stations
 - 1 Proposed Stations
 - CSXT ROW (County Parcel Data)
 - City/County Boundary

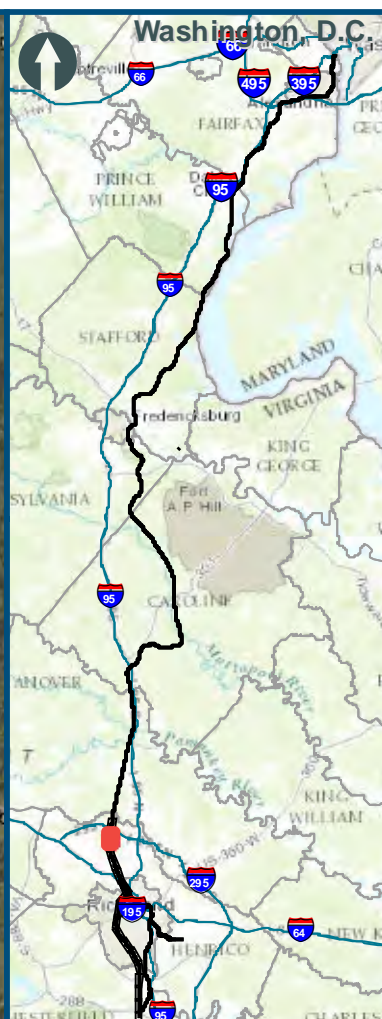
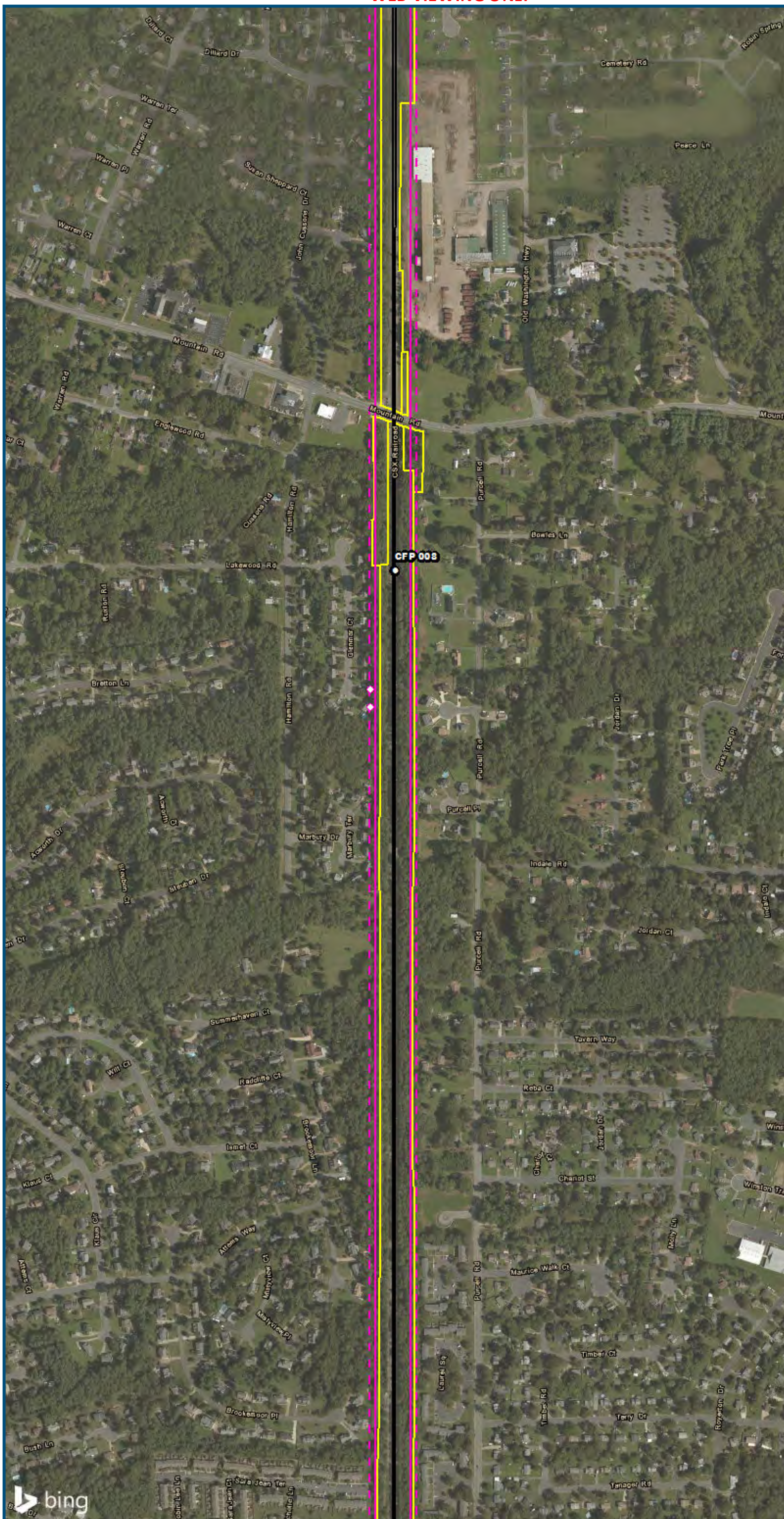
**Appendix V
 Vibration Analysis
 Alternative Areas
 6A, 6B-A Line, 6C, 6E**



www.DC2RVArail.com



\\dcis-main\gis_data\GIS\Projects\0115-46_VA\Depot\Rail-Public\Transportation\02309056_RAPS-4AltDev-Concept\Eng\map_docs\mxd\01EIS\Tech_Reports\NoiseandVibration\Web_Versions\Mapbook_11x17_WEB.mxd | Last Updated: 08.21.2017

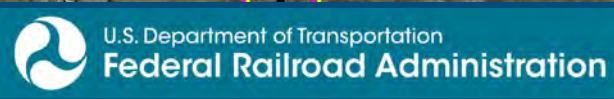


0 250 500
 Feet
 1 inch = 500 feet
 @ 11 x 17 inches
 Projection: Lambert Conformal Conic
 State Plane Virginia North FIPS 4501 Feet
 North American Datum of 1983
 Imagery/Basemap Source: 2015 Bing
 Aerial Imagery; ESRI World Transportation

- Legend**
- Category 2 Vibration Impact Contour
 - Category 3 Vibration Impact Contour
 - Category 2 Vibration Impacts
 - Category 3 Vibration Impacts
 - CSXT Mileposts
 - Track - Existing
 - Stations
 - Proposed Stations
 - CSXT ROW (County Parcel Data)
 - City/County Boundary

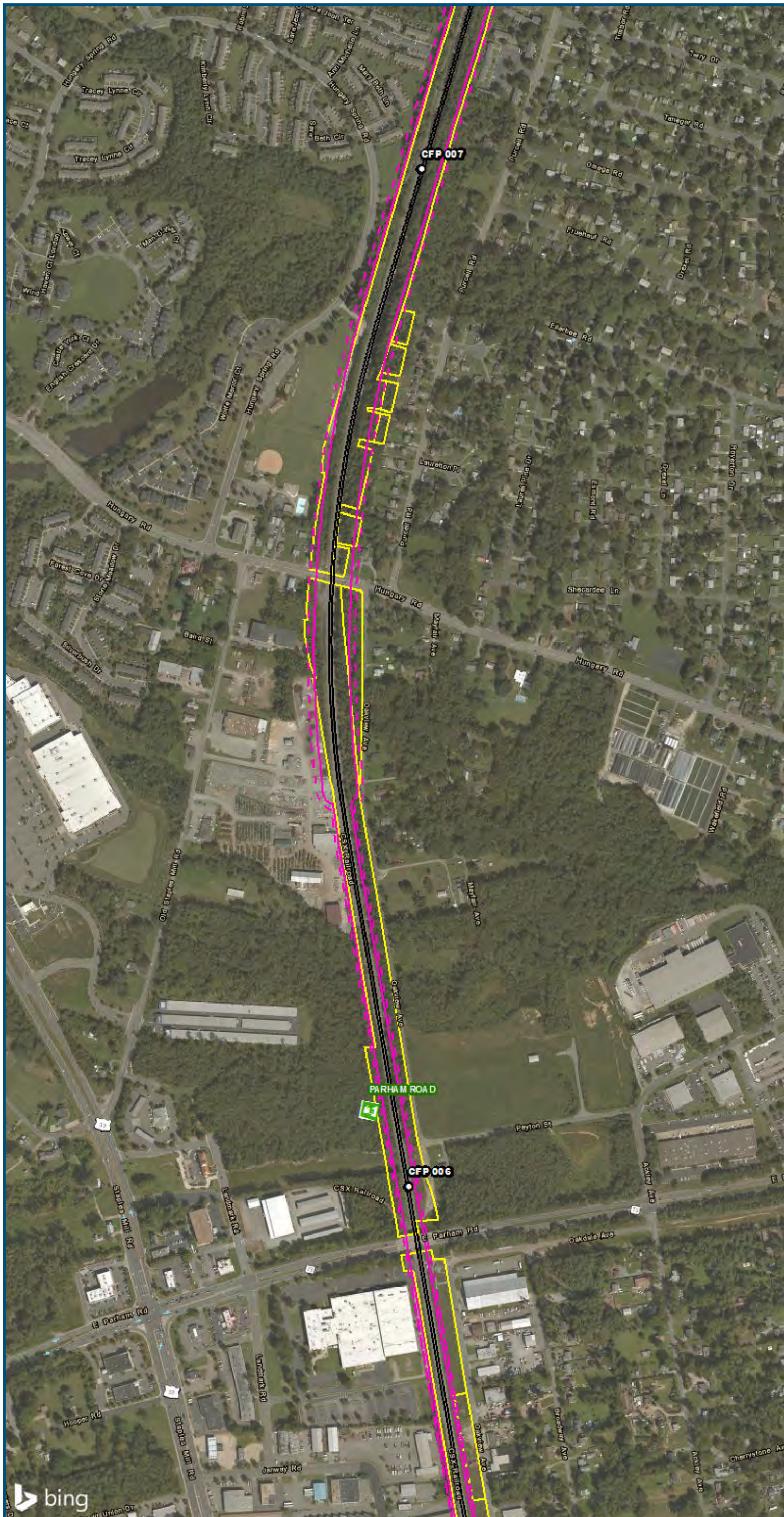
Appendix V
Vibration Analysis
Alternative Areas
6A, 6B-A Line, 6C, 6E

\\dcis-main\gis_data\GIS\Projects\0115-46_VA\Depot\Rail-Public\Transportation\0230756_RAPS-4\11Dev-Concept\Eng\map_docs\mxd\01EIS\Tech_Reports\NoiseandVibration\Web_Versions\NoiseandVibration\Map_11x17_WEB.mxd | Last Updated: 08.21.2017



www.DC2RVArail.com





0 250 500
 Feet
 1 inch = 500 feet
 @ 11 x 17 inches
 Projection: Lambert Conformal Conic
 State Plane Virginia North FIPS 4501 Feet
 North American Datum of 1983
 Imagery/Basemap Source: 2015 Bing
 Aerial Imagery; ESRI World Transportation

Legend

- Category 2 Vibration Impact Contour
- Category 3 Vibration Impact Contour
- Category 2 Vibration Impacts
- Category 3 Vibration Impacts
- CSXT Mileposts
- Track - Existing
- Stations
- Proposed Stations
- CSXT ROW (County Parcel Data)
- City/County Boundary

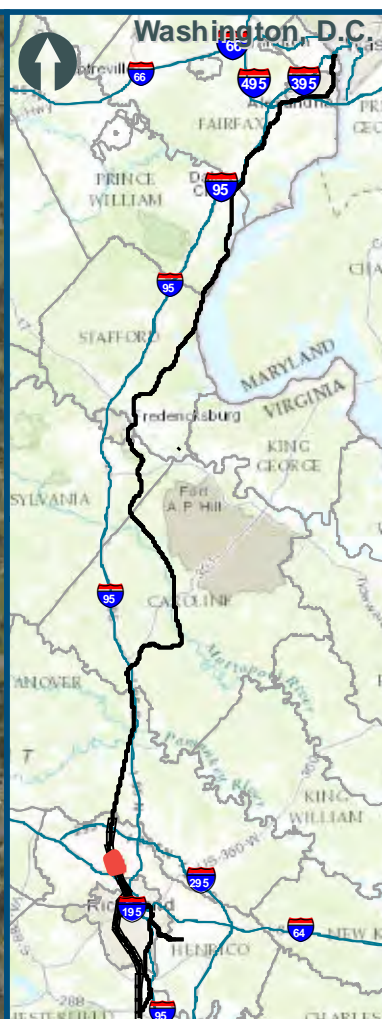
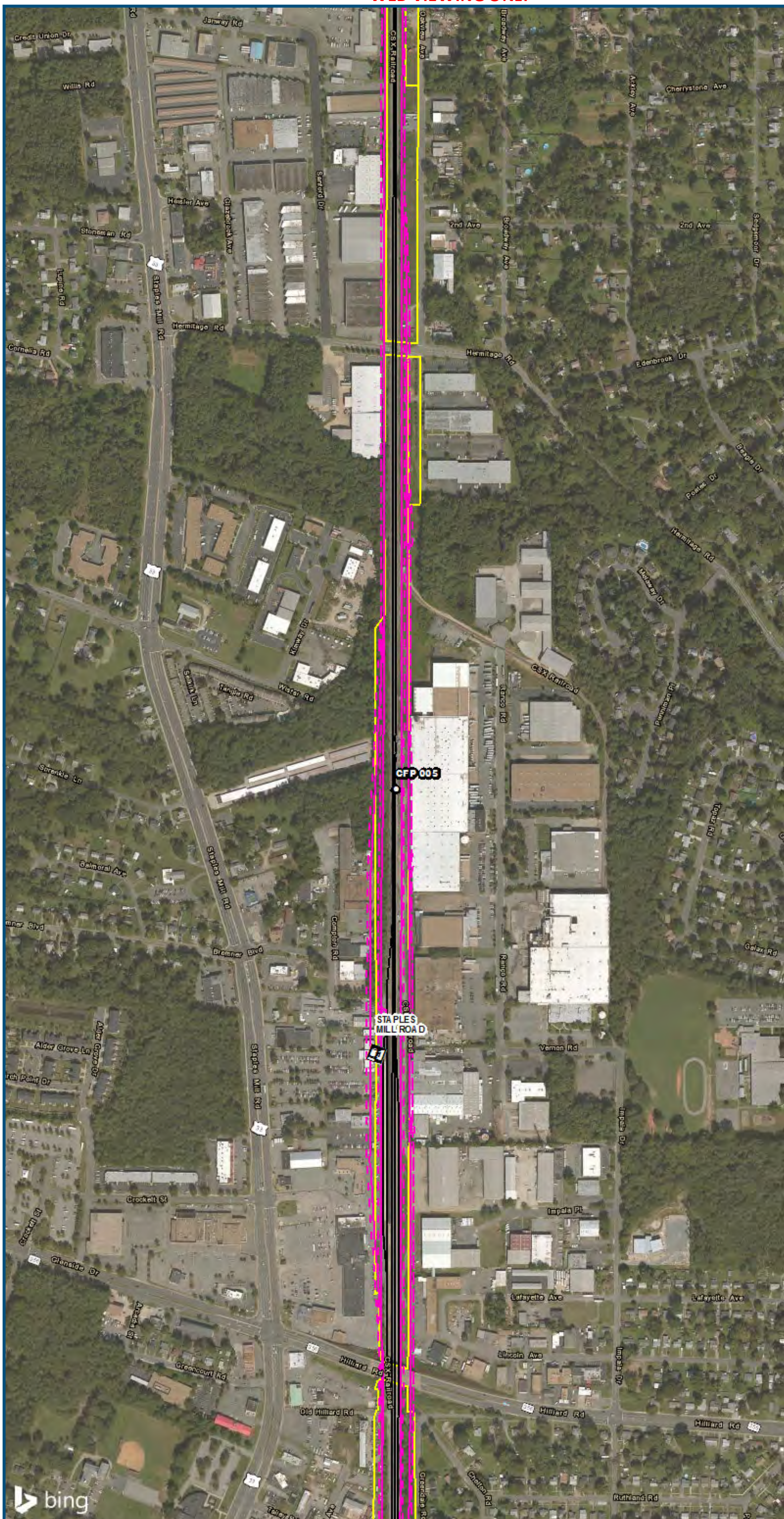
**Appendix V
 Vibration Analysis
 Alternative Areas
 6A, 6B-A Line, 6C, 6E**

\\dcis-main\gis_data\GIS\Projects\0115-45_VA_Depot\Rail-Public\GIS\Tech_Reports\Noise and Vibration\Map_Versions\Noise and Vibration\Map_Versions\Noise and Vibration\11X17_WEB.mxd | Last Updated: 08.21.2017



www.DC2RVArail.com



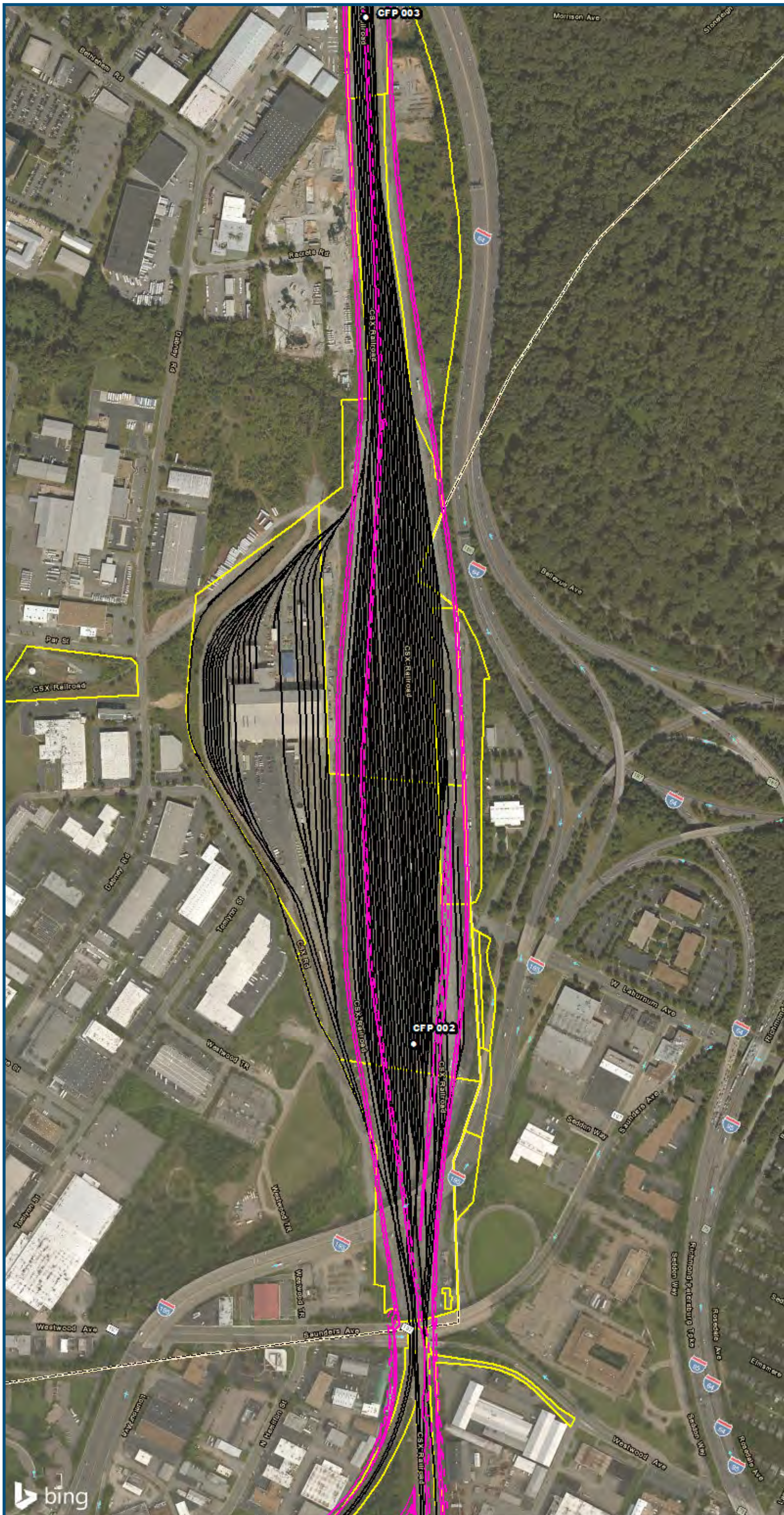


0 250 500
 Feet
 1 inch = 500 feet
 @ 11 x 17 inches
 Projection: Lambert Conformal Conic
 State Plane Virginia North FIPS 4501 Feet
 North American Datum of 1983
 Imagery/Basemap Source: 2015 Bing
 Aerial Imagery; ESRI World Transportation

- Legend**
- Category 2 Vibration Impact Contour
 - Category 3 Vibration Impact Contour
 - Category 2 Vibration Impacts
 - Category 3 Vibration Impacts
 - CSXT Mileposts
 - Track - Existing
 - Stations
 - Proposed Stations
 - CSXT ROW (County Parcel Data)
 - City/County Boundary

Appendix V
Vibration Analysis
Alternative Areas
6A, 6B-A Line, 6C, 6E

\\dcis-main\gis_data\GIS\Projects\0115-45_VA_Depot\RailtoPub\fcT_ran\transportation\02309056_RAPS-4\11Dev-Concept\Eng\map_docs\mxd\01EIS\Tech_Reports\NoiseandVibration\Web_Versions\NoiseandVibration\11X17_WEB.mxd | Last Updated: 08.21.2017

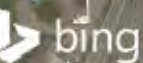


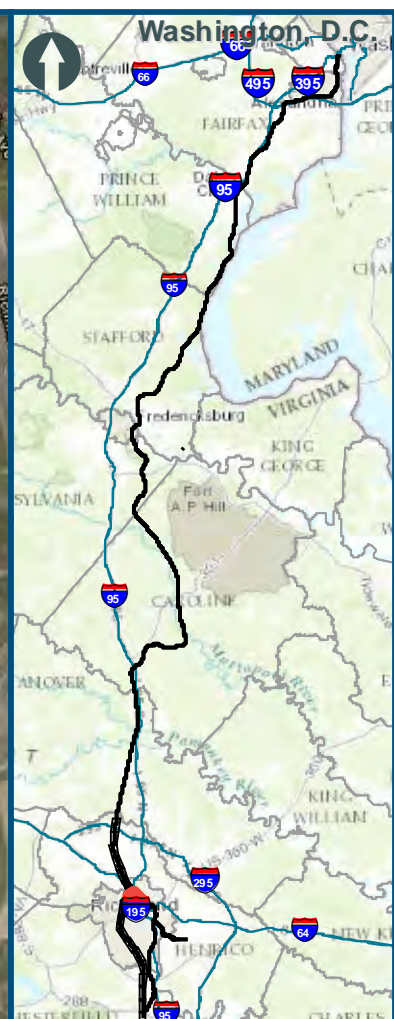
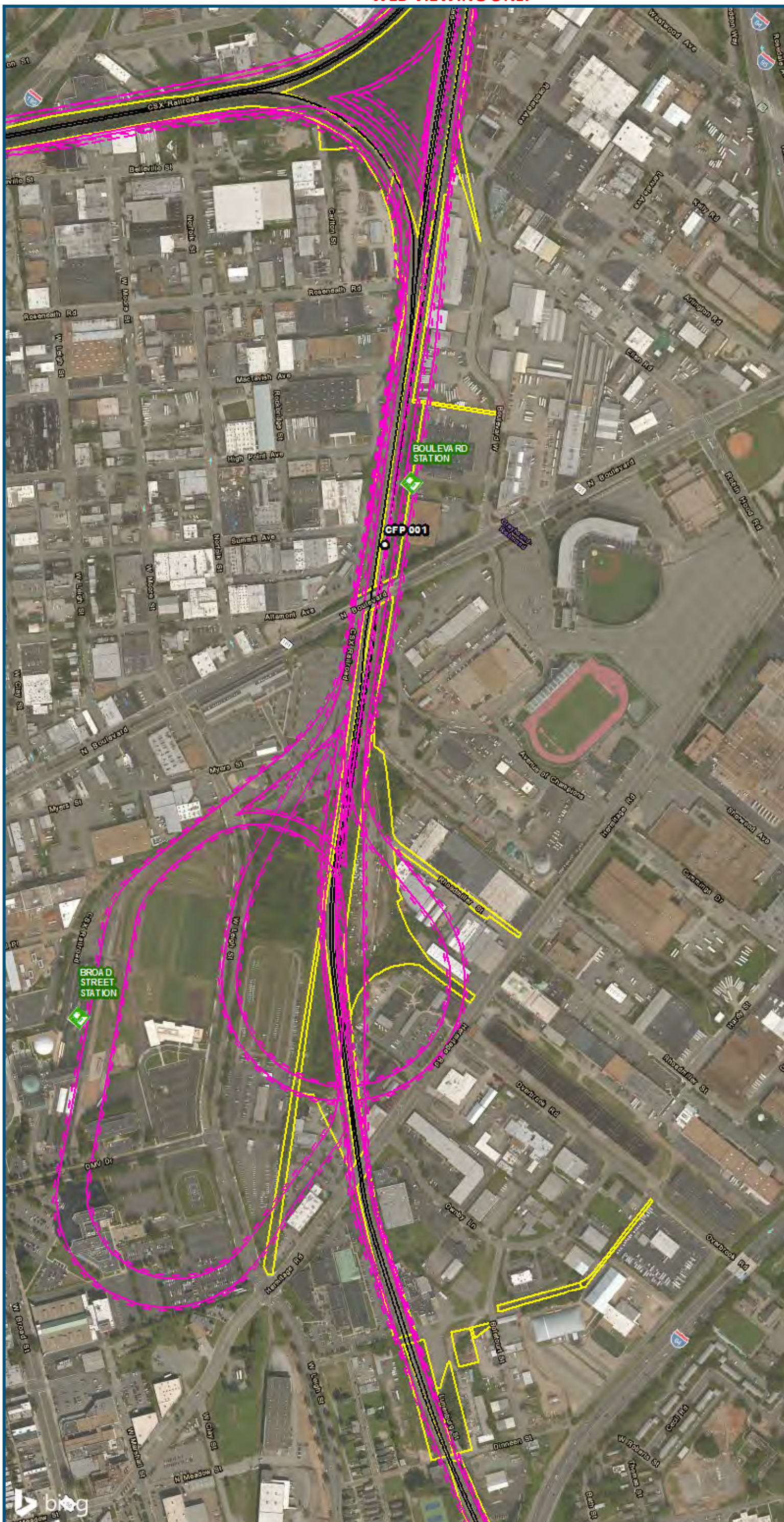
0 250 500
 Feet
 1 inch = 500 feet
 @ 11 x 17 inches
 Projection: Lambert Conformal Conic
 State Plane Virginia North FIPS 4501 Feet
 North American Datum of 1983
 Imagery/Basemap Source: 2015 Bing
 Aerial Imagery; ESRI World Transportation

Legend

- Category 2 Vibration Impact Contour
- Category 3 Vibration Impact Contour
- Category 2 Vibration Impacts
- Category 3 Vibration Impacts
- CSXT Mileposts
- Track - Existing
- Stations
- Proposed Stations
- CSXT ROW (County Parcel Data)
- City/County Boundary

Appendix V
 Vibration Analysis
 Alternative Areas
 6A, 6B-A Line, 6C, 6E





0 250 500
 Feet
 1 inch = 500 feet
 @ 11 x 17 inches
 Projection: Lambert Conformal Conic
 State Plane Virginia North FIPS 4501 Feet
 North American Datum of 1983
 Imagery/Basemap Source: 2015 Bing
 Aerial Imagery; ESRI World Transportation

- Legend**
- Category 2 Vibration Impact Contour
 - Category 3 Vibration Impact Contour
 - Category 2 Vibration Impacts
 - Category 3 Vibration Impacts
 - CSXT Mileposts
 - Track - Existing
 - Stations
 - Proposed Stations
 - CSXT ROW (County Parcel Data)
 - City/County Boundary

Appendix V
Vibration Analysis
Alternative Areas
6A, 6B-A Line, 6C, 6E

\\dcis-main\gis_data\GIS\Projects\0115-46_VA\Depot\Rail-Public\GIS\Tech_Reports\Noise and Vibration\Map_Versions\Noise and Vibration\Map_Versions\Noise and Vibration\Area6A_6B_6C_6E_Mapbook_11x17_WEB.mxd | Last Updated: 08.21.2017

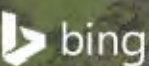




0 250 500
 Feet
 1 inch = 500 feet
 @ 11 x 17 inches
 Projection: Lambert Conformal Conic
 State Plane Virginia North FIPS 4501 Feet
 North American Datum of 1983
 Imagery/Basemap Source: 2015 Bing
 Aerial Imagery; ESRI World Transportation

- Legend**
- Category 2 Vibration Impact Contour
 - Category 3 Vibration Impact Contour
 - Category 2 Vibration Impacts
 - Category 3 Vibration Impacts
 - CSXT Mileposts
 - Track - Existing
 - Stations
 - Proposed Stations
 - CSXT ROW (County Parcel Data)
 - City/County Boundary

**Appendix V
 Vibration Analysis
 Alternative Areas
 6A, 6B-A Line, 6C, 6E**



www.DC2RVArail.com



\dc2rva\main\gis_data\GIS\Projects\0115-46_VA_Depot\Rail-Public Transportation\02307056_RAPS-4\11Dev-Concept\Eng\map_docs\mxd\01EIS\Tech_Reports\Noise and Vibration\Web_Versions\Noise and Vibration\11x17_WEB.mxd | Last Updated: 08.21.2017



0 250 500
 Feet
 1 inch = 500 feet
 @ 11 x 17 inches
 Projection: Lambert Conformal Conic
 State Plane Virginia North FIPS 4501 Feet
 North American Datum of 1983
 Imagery/Basemap Source: 2015 Bing
 Aerial Imagery; ESRI World Transportation

- Legend**
- Category 2 Vibration Impact Contour
 - Category 3 Vibration Impact Contour
 - Category 2 Vibration Impacts
 - Category 3 Vibration Impacts
 - CSXT Mileposts
 - Track - Existing
 - Stations
 - Proposed Stations
 - CSXT ROW (County Parcel Data)
 - City/County Boundary

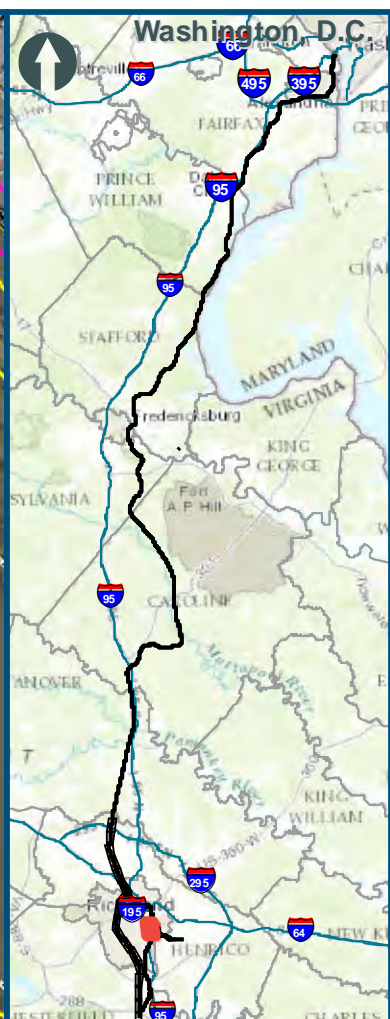
Appendix V
Vibration Analysis
Alternative Areas
6A, 6B-A Line, 6C, 6E

\\dcis-main\gis_data\GIS\Projects\0115-46_VA\DeptofRalls-Public\T transportation\0239056_RAPS-4AltDev-Concept\Eng\map_docs\mxd\01EIS\Tech_Reports\NoiseandVibration\Web_Versions\NoiseandVibration_Area6A_6BA_6C_6E_Mapbook_11x17_WEB.mxd | Last Updated: 08.21.2017



www.DC2RVArail.com



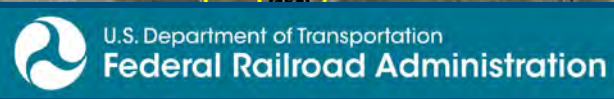


0 250 500
 Feet
 1 inch = 500 feet
 @ 11 x 17 inches
 Projection: Lambert Conformal Conic
 State Plane Virginia North FIPS 4501 Feet
 North American Datum of 1983
 Imagery/Basemap Source: 2015 Bing
 Aerial Imagery; ESRI World Transportation

- Legend**
- Category 2 Vibration Impact Contour
 - Category 3 Vibration Impact Contour
 - Category 2 Vibration Impacts
 - Category 3 Vibration Impacts
 - CSXT Mileposts
 - Track - Existing
 - Stations
 - Proposed Stations
 - CSXT ROW (County Parcel Data)
 - City/County Boundary

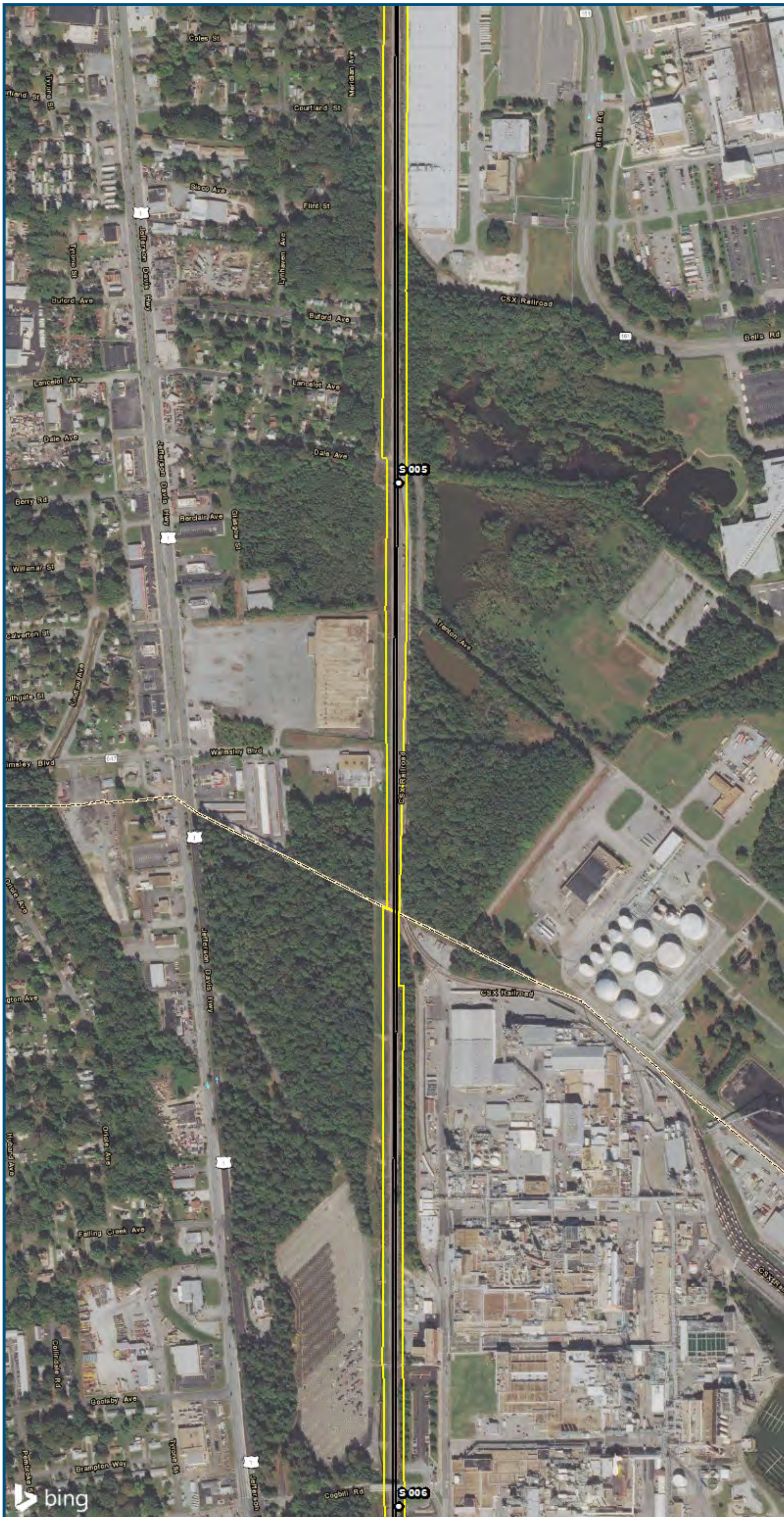
Appendix V
Vibration Analysis
Alternative Areas
6A, 6B-A Line, 6C, 6E

\\dcis-main\gis_data\GIS\Projects\0115-46_VA\Depot\RailtoPublicTransportation\0239056_RAPS-4\Dev-Concept\Eng\map_docs\mxd\01EIS\Tech_Reports\NoiseandVibration\Web_Versions\NoiseandVibration_Area6A_6B_6C_6E_Mapbook_11x17_WEB.mxd | Last Updated: 08.21.2017



www.DC2RVArail.com



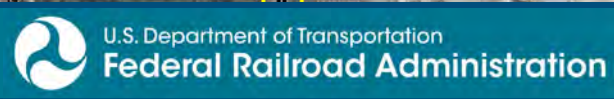


0 250 500
 Feet
 1 inch = 500 feet
 @ 11 x 17 inches
 Projection: Lambert Conformal Conic
 State Plane Virginia North FIPS 4501 Feet
 North American Datum of 1983
 Imagery/Basemap Source: 2015 Bing
 Aerial Imagery; ESRI World Transportation

- Legend**
- Category 2 Vibration Impact Contour
 - Category 3 Vibration Impact Contour
 - Category 2 Vibration Impacts
 - Category 3 Vibration Impacts
 - CSXT Mileposts
 - Track - Existing
 - Stations
 - Proposed Stations
 - CSXT ROW (County Parcel Data)
 - City/County Boundary

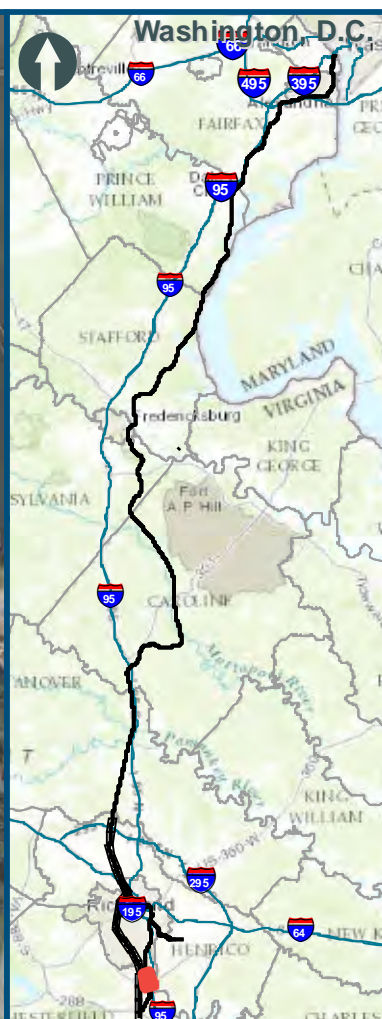
Appendix V
Vibration Analysis
Alternative Areas
6A, 6B-A Line, 6C, 6E

\\dcis-main\gis_data\GIS\Projects\0115-46_VA_Depot\RailtoRich-Pub\GIS\Transportation\0239056_RAPS-4AltDev-Concept\Eng\map_docs\mxd\01EIS\Tech_Reports\NoiseandVibration\Map_Versions\NoiseandVibration\Area6A_6B_6C_6E_Mapbook_11x17_WEB.mxd | Last Updated: 08.21.2017



www.DC2RVArail.com





0 250 500
 Feet
 1 inch = 500 feet
 @ 11 x 17 inches
 Projection: Lambert Conformal Conic
 State Plane Virginia North FIPS 4501 Feet
 North American Datum of 1983
 Imagery/Basemap Source: 2015 Bing
 Aerial Imagery; ESRI World Transportation

- Legend**
- Category 2 Vibration Impact Contour
 - Category 3 Vibration Impact Contour
 - Category 2 Vibration Impacts
 - Category 3 Vibration Impacts
 - CSXT Mileposts
 - Track - Existing
 - Stations
 - Proposed Stations
 - CSXT ROW (County Parcel Data)
 - City/County Boundary

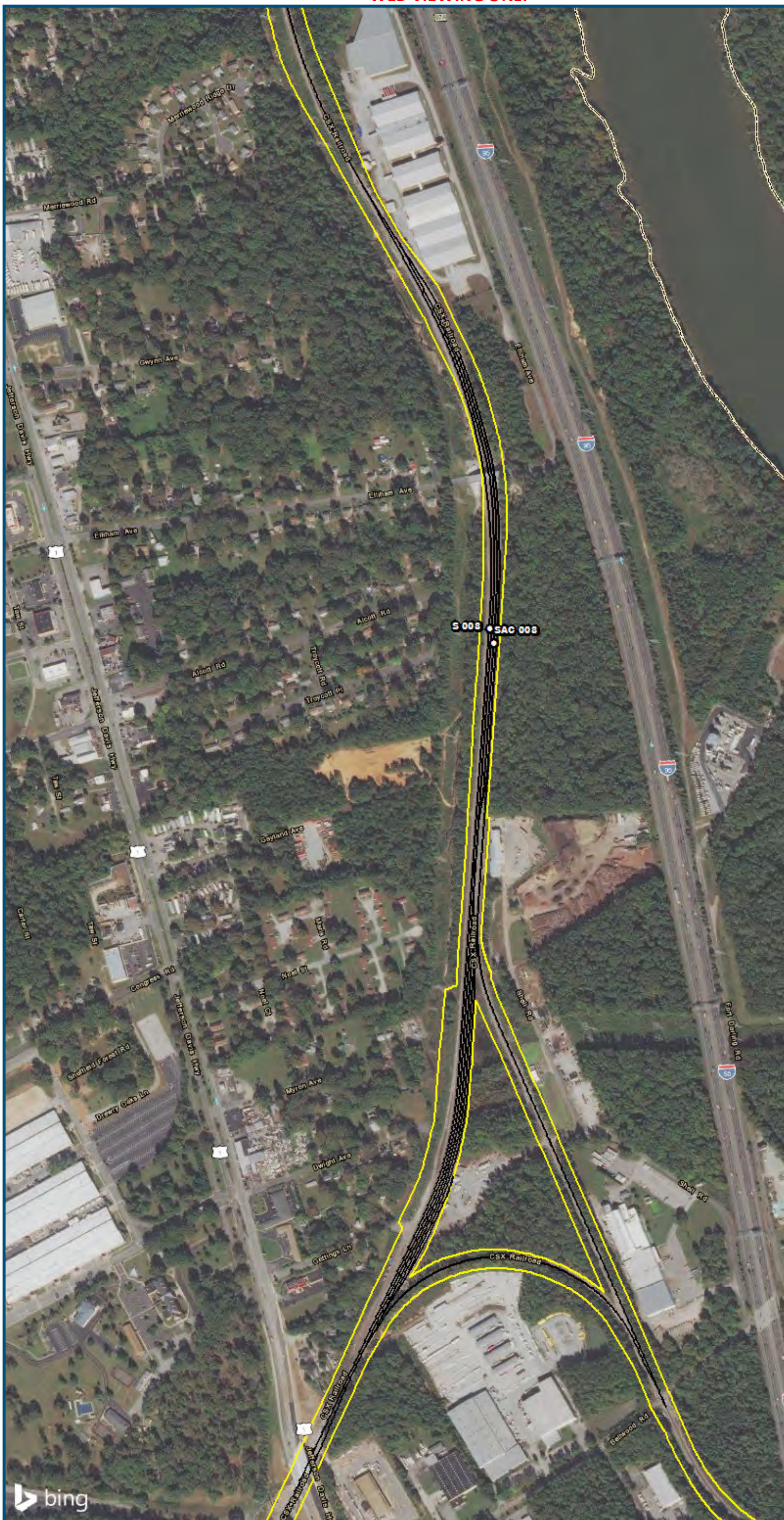
Appendix V
Vibration Analysis
Alternative Areas
6A, 6B-A Line, 6C, 6E

\\dcis-main\gis_data\GIS\Projects\0115-46_VA_Depot\Rail-Public\Transportation\0239056_RAPS-4\11Dev-Concept\Eng\map_docs\mxd\01EIS\Tech_Reports\NoiseandVibration\Web_Versions\NoiseandVibration\11x17_WEB.mxd | Last Updated: 08.21.2017



www.DC2RVArail.com





0 250 500
 Feet
 1 inch = 500 feet
 @ 11 x 17 inches
 Projection: Lambert Conformal Conic
 State Plane Virginia North FIPS 4501 Feet
 North American Datum of 1983
 Imagery/Basemap Source: 2015 Bing
 Aerial Imagery; ESRI World Transportation

Legend

- Category 2 Vibration Impact Contour
- Category 3 Vibration Impact Contour
- Category 2 Vibration Impacts
- Category 3 Vibration Impacts
- CSXT Mileposts
- Track - Existing
- Stations
- Proposed Stations
- CSXT ROW (County Parcel Data)
- City/County Boundary

**Appendix V
 Vibration Analysis
 Alternative Areas
 6A, 6B-A Line, 6C, 6E**



\\dcis-main\gis_data\GIS\Projects\0115-46_VA\Depot\Rail-Public\Transportation\0239056_RAPS-4\IT\Dev-Concept\Eng\map_docs\mxd\01EIS\Tech_Reports\NoiseandVibration\Map_Versions\NoiseandVibration\11X17_WEB.mxd | Last Updated: 08.21.2017

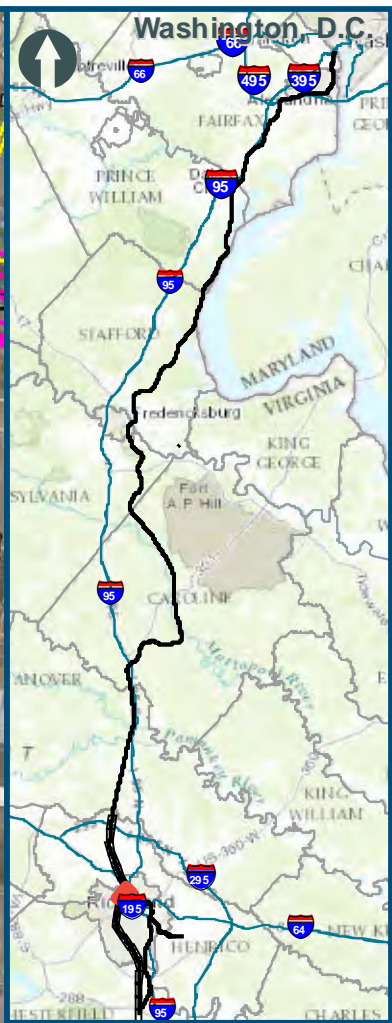
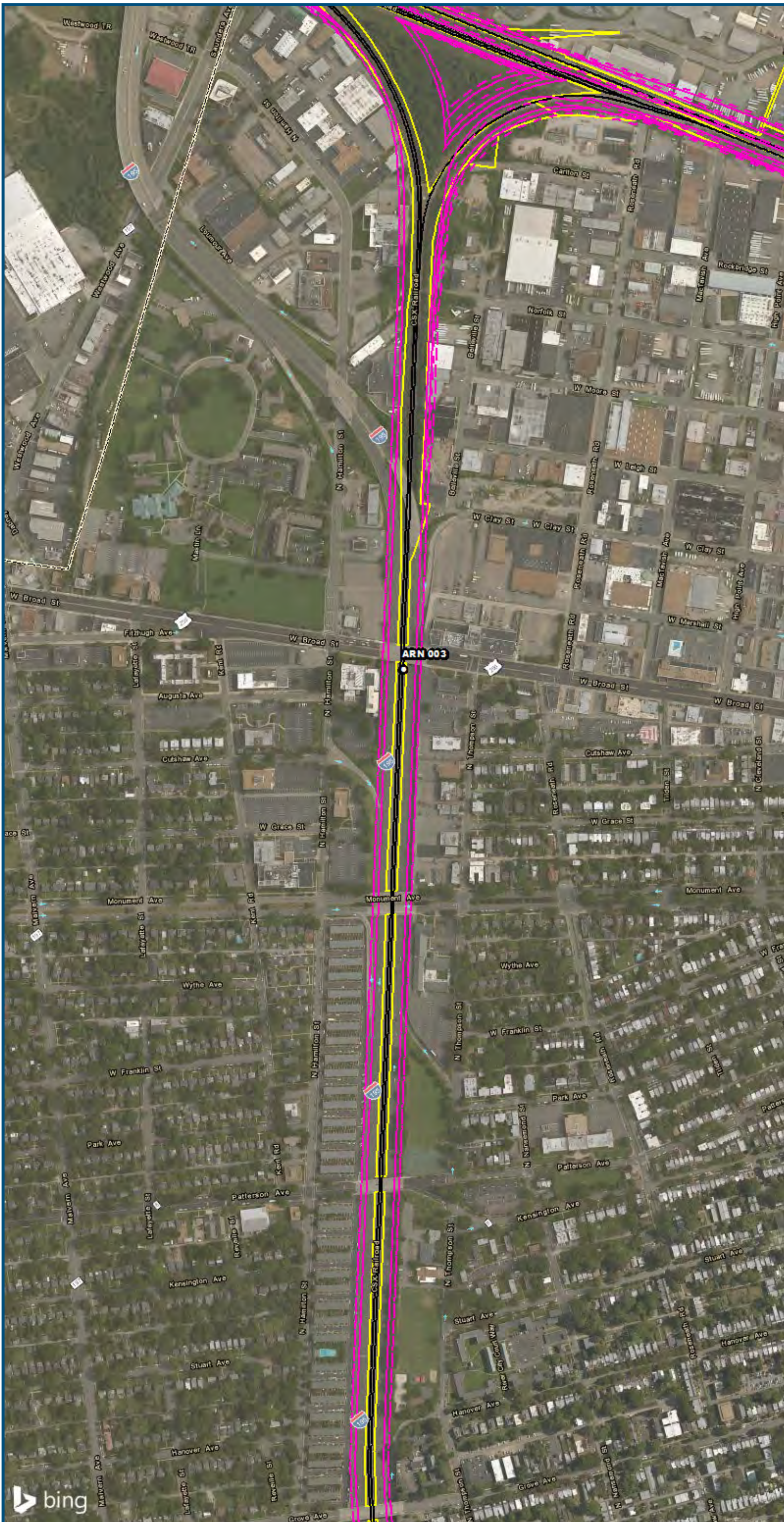


0 250 500
 Feet
 1 inch = 500 feet
 @ 11 x 17 inches
 Projection: Lambert Conformal Conic
 State Plane Virginia North FIPS 4501 Feet
 North American Datum of 1983
 Imagery/Basemap Source: 2015 Bing
 Aerial Imagery; ESRI World Transportation

- Legend**
- Category 2 Vibration Impact Contour
 - Category 3 Vibration Impact Contour
 - Category 2 Vibration Impacts
 - Category 3 Vibration Impacts
 - CSXT Mileposts
 - Track - Existing
 - Stations
 - Proposed Stations
 - CSXT ROW (County Parcel Data)
 - City/County Boundary

**Appendix V
 Vibration Analysis
 Alternative Areas
 6A, 6B-A Line, 6C, 6E**

\\cis-main\gis_data\GIS\Projects\0115-45_VA_Depot\Rail-Public\Transportation\0239056_RAPS-4AltDev-Concept\Eng\map_docs\mxd\01EIS\Tech_Reports\Noise and Vibration\Web_Versions\Noise and Vibration\11X17_WEB.mxd | Last Updated: 08.21.2017

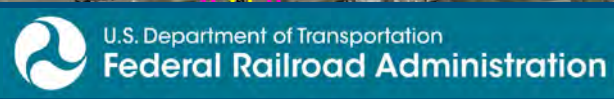


0 250 500
 Feet
 1 inch = 500 feet
 @ 11 x 17 inches
 Projection: Lambert Conformal Conic
 State Plane Virginia North FIPS 4501 Feet
 North American Datum of 1983
 Imagery/Basemap Source: 2015 Bing
 Aerial Imagery; ESRI World Transportation

- Legend**
- Category 2 Vibration Impact Contour
 - Category 3 Vibration Impact Contour
 - Category 2 Vibration Impacts
 - Category 3 Vibration Impacts
 - CSXT Mileposts
 - Track - Existing
 - Stations
 - Proposed Stations
 - CSXT ROW (County Parcel Data)
 - City/County Boundary

Appendix V
Vibration Analysis
Alternative Areas
6A, 6B-A Line, 6C, 6E

\\dcis-main-gis\data\GIS\Projects\0115-46_VA\Depot\Rail-Public\Transportation\0239056_RAPS-4\Dev-Concept\Eng\map_docs\mxd\01EIS\Tech_Reports\NoiseandVibration\Web_Versions\NoiseandVibration_Area6A_6BA_6C_6E_Mapbook_11x17_WEB.mxd | Last Updated: 08.21.2017



www.DC2RVArail.com





0 250 500
 Feet
 1 inch = 500 feet
 @ 11 x 17 inches
 Projection: Lambert Conformal Conic
 State Plane Virginia North FIPS 4501 Feet
 North American Datum of 1983
 Imagery/Basemap Source: 2015 Bing
 Aerial Imagery; ESRI World Transportation

- Legend**
- Category 2 Vibration Impact Contour
 - Category 3 Vibration Impact Contour
 - Category 2 Vibration Impacts
 - Category 3 Vibration Impacts
 - CSXT Mileposts
 - Track - Existing
 - Stations
 - Proposed Stations
 - CSXT ROW (County Parcel Data)
 - City/County Boundary

**Appendix V
 Vibration Analysis
 Alternative Areas
 6A, 6B-A Line, 6C, 6E**

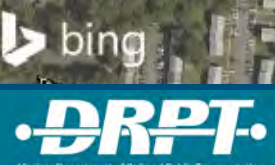
\\dcis-main\gis_data\GIS\Projects\0115-46_VA\Depot\Rail-Public\Transportation\0239056_RAPS-4\AltDev-Concept\Eng\map_docs\mxd\01EIS\Tech_Reports\Noise and Vibration\Map_Versions\Noise and Vibration\Map_Versions\Noise and Vibration\11x17_WEB.mxd | Last Updated: 08.21.2017



0 250 500
 Feet
 1 inch = 500 feet
 @ 11 x 17 inches
 Projection: Lambert Conformal Conic
 State Plane Virginia North FIPS 4501 Feet
 North American Datum of 1983
 Imagery/Basemap Source: 2015 Bing
 Aerial Imagery; ESRI World Transportation

- Legend**
- - - Category 2 Vibration Impact Contour
 - - - Category 3 Vibration Impact Contour
 - Category 2 Vibration Impacts
 - Category 3 Vibration Impacts
 - CSXT Mileposts
 - Track - Existing
 - Stations
 - Proposed Stations
 - CSXT ROW (County Parcel Data)
 - City/County Boundary

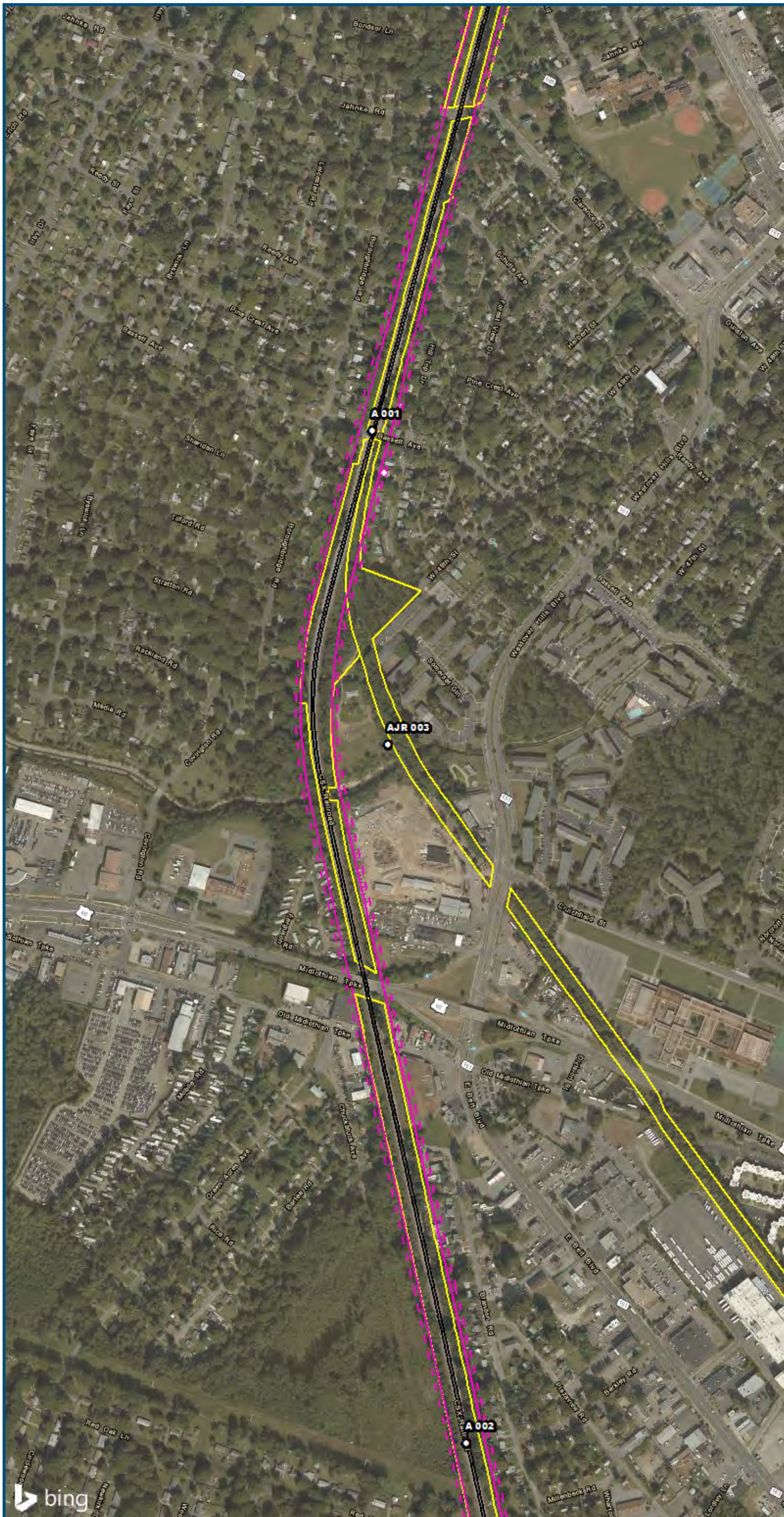
Appendix V
Vibration Analysis
Alternative Areas
6A, 6B-A Line, 6C, 6E



www.DC2RVArail.com



\\dcis-main\gis_data\GIS\Projects\0115-46_VA\Deplo\Rail-Pub\T\Transportation\0239056_RAPS-4\HDev-Concep\Eng\map_docs\mxd\01EIS\Tech_Reports\NoiseandVibration\Web_Versions\NoiseandVibration\11X17_WEB.mxd | Last Updated: 08.21.2017



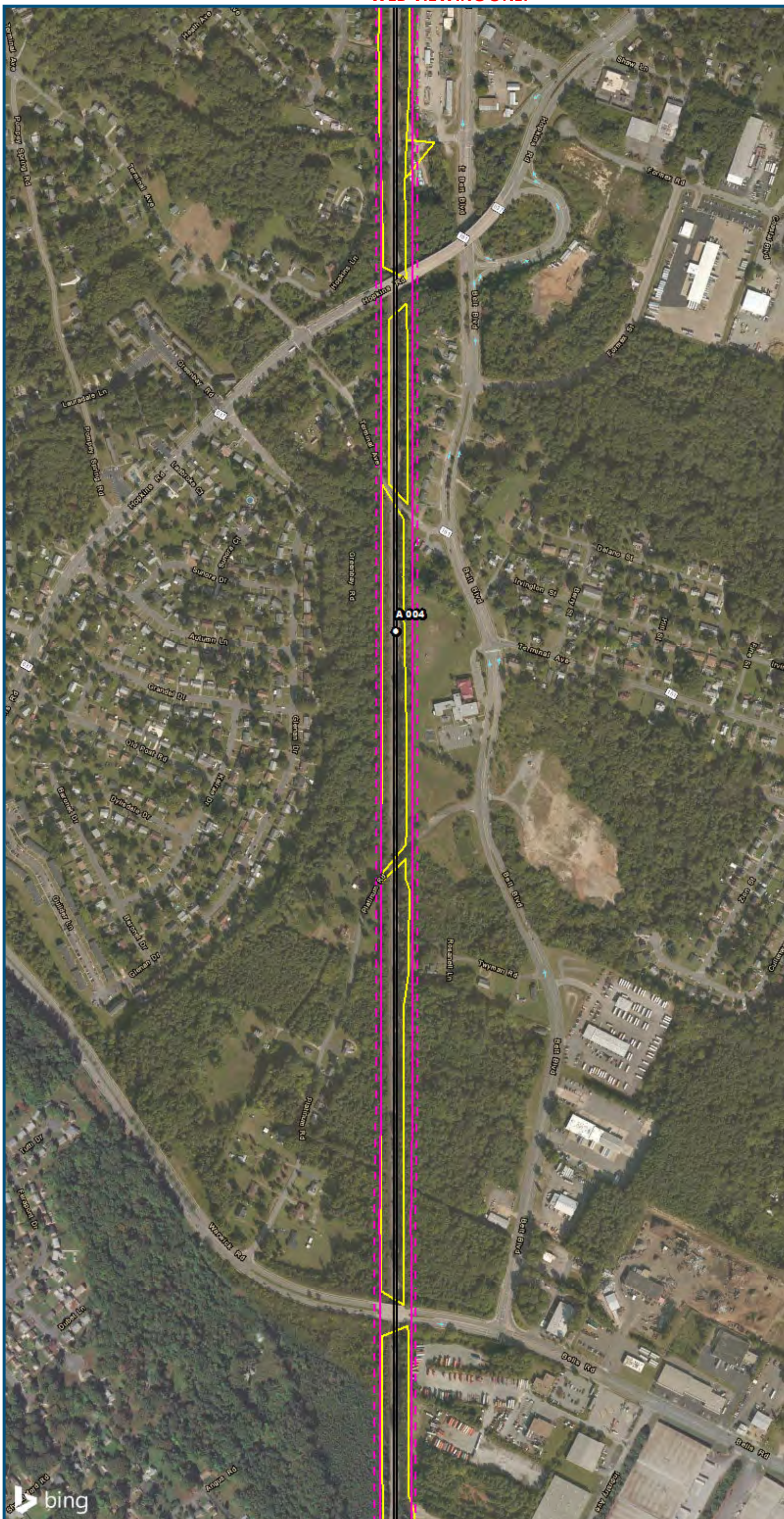
0 250 500
 Feet
 1 inch = 500 feet
 @ 11 x 17 inches
 Projection: Lambert Conformal Conic
 State Plane Virginia North FIPS 4501 Feet
 North American Datum of 1983
 Imagery/Basemap Source: 2015 Bing
 Aerial Imagery; ESRI World Transportation

Legend

- Category 2 Vibration Impact Contour
- Category 3 Vibration Impact Contour
- Category 2 Vibration Impacts
- Category 3 Vibration Impacts
- CSXT Mileposts
- Track - Existing
- Stations
- Proposed Stations
- CSXT ROW (County Parcel Data)
- City/County Boundary

**Appendix V
 Vibration Analysis
 Alternative Areas
 6A, 6B-A Line, 6C, 6E**

\\dcis-main\gis_data\GIS\Projects\0115-45_VA\Depot\Rail-Public\Tech_Reports\Noise and Vibration\Web_Versions\Noise and Vibration\Map_11x17_WEB.mxd | Last Updated: 08.21.2017

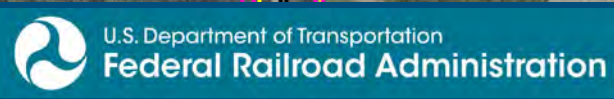


0 250 500
 Feet
 1 inch = 500 feet
 @ 11 x 17 inches
 Projection: Lambert Conformal Conic
 State Plane Virginia North FIPS 4501 Feet
 North American Datum of 1983
 Imagery/Basemap Source: 2015 Bing
 Aerial Imagery; ESRI World Transportation

- Legend**
- Category 2 Vibration Impact Contour
 - Category 3 Vibration Impact Contour
 - Category 2 Vibration Impacts
 - Category 3 Vibration Impacts
 - CSXT Mileposts
 - Track - Existing
 - Stations
 - Proposed Stations
 - CSXT ROW (County Parcel Data)
 - City/County Boundary

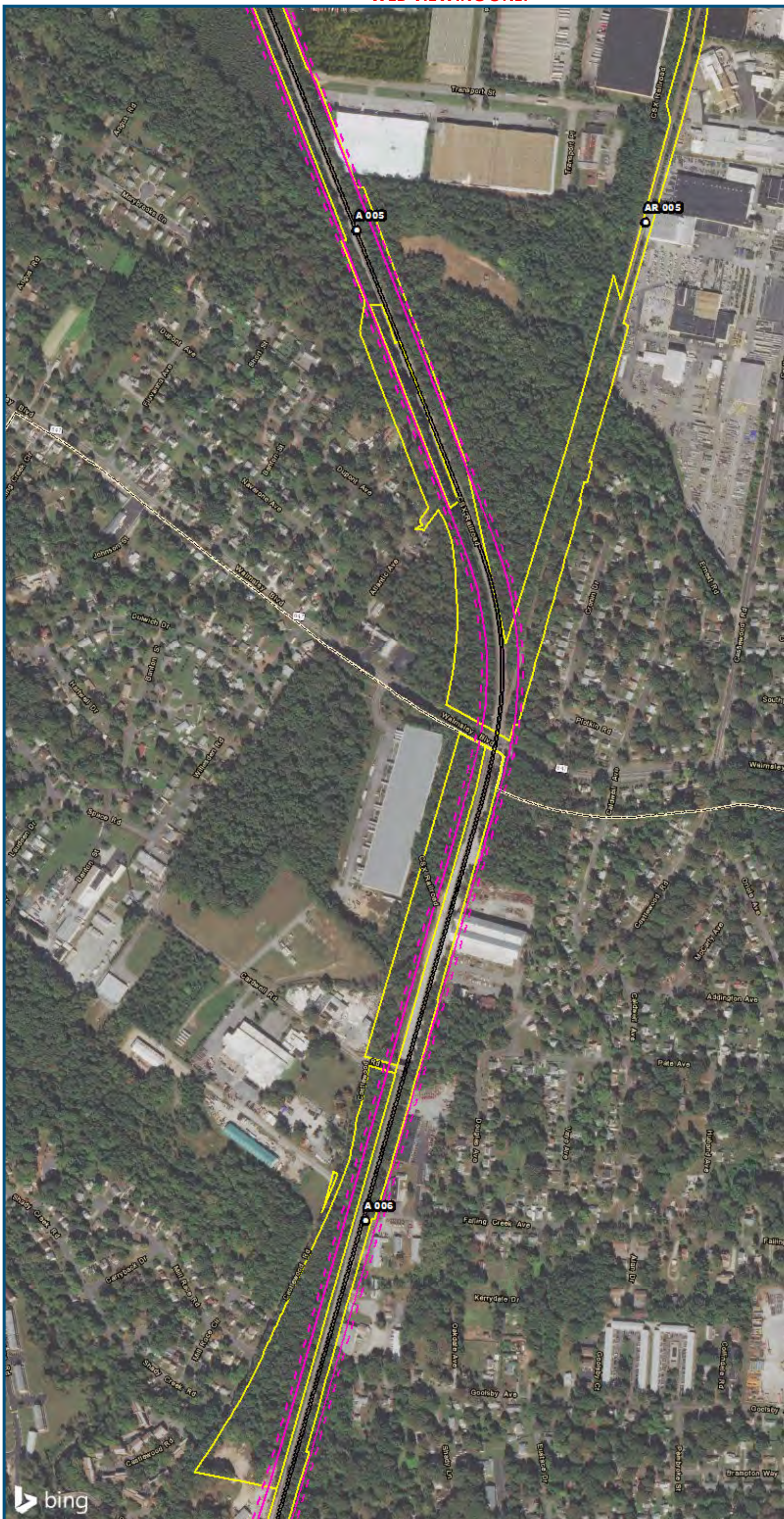
**Appendix V
 Vibration Analysis
 Alternative Areas
 6A, 6B-A Line, 6C, 6E**

\\dcis-main\gis_data\GIS\Projects\0115-46_VA\Depot\RailtoPub\T\Transportation\02309056_RAPS-4\ITDev-Concept\Eng\map_docs\mxd\01EIS\Tech_Reports\NoiseandVibration\Web_Versions\Mapbook_11x17_WEB.mxd | Last Updated: 08.21.2017



www.DC2RVArail.com

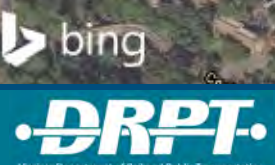




0 250 500
 Feet
 1 inch = 500 feet
 @ 11 x 17 inches
 Projection: Lambert Conformal Conic
 State Plane Virginia North FIPS 4501 Feet
 North American Datum of 1983
 Imagery/Basemap Source: 2015 Bing
 Aerial Imagery; ESRI World Transportation

- Legend**
- Category 2 Vibration Impact Contour
 - Category 3 Vibration Impact Contour
 - Category 2 Vibration Impacts
 - Category 3 Vibration Impacts
 - CSXT Mileposts
 - Track - Existing
 - Stations
 - Proposed Stations
 - CSXT ROW (County Parcel Data)
 - City/County Boundary

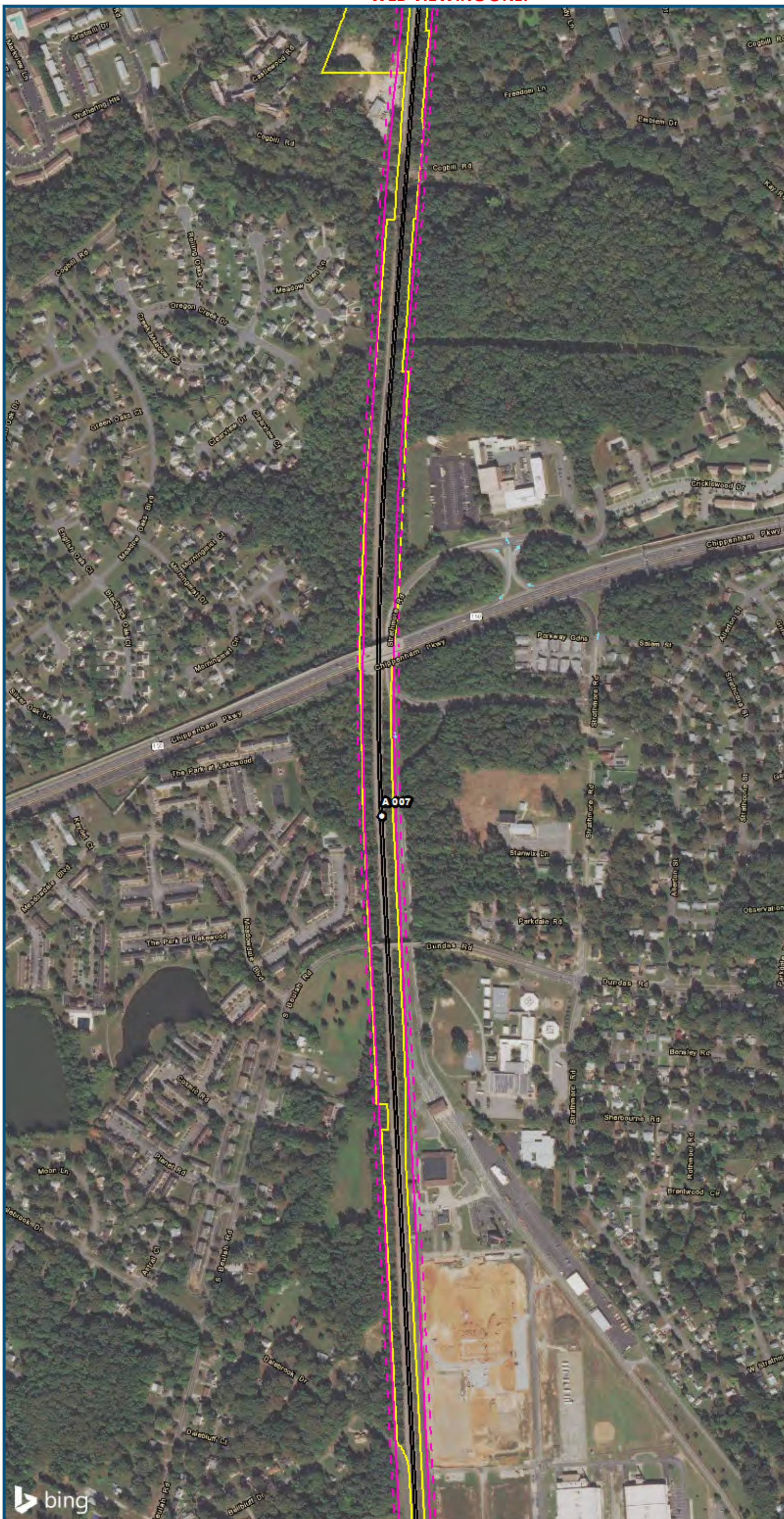
Appendix V
Vibration Analysis
Alternative Areas
6A, 6B-A Line, 6C, 6E



www.DC2RVArail.com



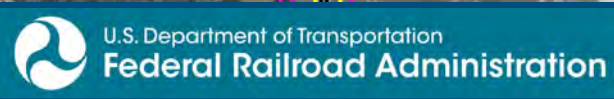
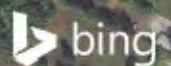
\\dcis-main\gis_data\GIS\Projects\0115-46_VA\Depot\Railis-Public\T transportation\0239056_RAPS-4\11Dev-Concept\Eng\map_docs\mxd\01EIS\Tech_Reports\Noise and Vibration\Web_Versions\Mapbook_11x17_WEB.mxd | Last Updated: 08.21.2017



0 250 500
 Feet
 1 inch = 500 feet
 @ 11 x 17 inches
 Projection: Lambert Conformal Conic
 State Plane Virginia North FIPS 4501 Feet
 North American Datum of 1983
 Imagery/Basemap Source: 2015 Bing
 Aerial Imagery; ESRI World Transportation

- Legend**
- Category 2 Vibration Impact Contour
 - Category 3 Vibration Impact Contour
 - Category 2 Vibration Impacts
 - Category 3 Vibration Impacts
 - CSXT Mileposts
 - Track - Existing
 - Stations
 - Proposed Stations
 - CSXT ROW (County Parcel Data)
 - City/County Boundary

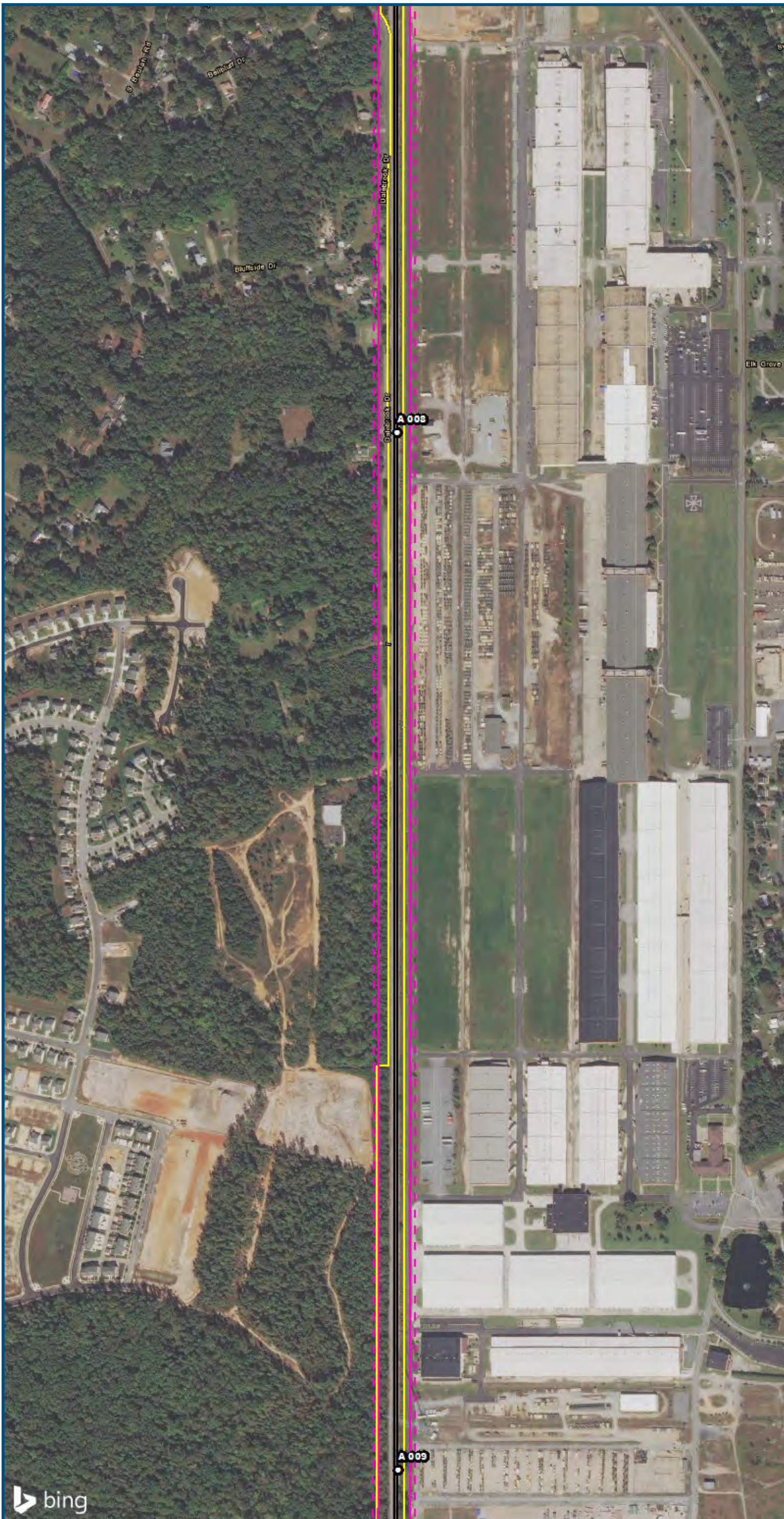
**Appendix V
 Vibration Analysis
 Alternative Areas
 6A, 6B-A Line, 6C, 6E**



www.DC2RVArail.com



\\dcis-main\gis_data\GIS\Projects\0115-46_VA\Deplo\Rail-Pub\T\transportation\02309056_RAPS-4\IT\Dev-Con\cap\Eng\map_docs\mxd\02309056_Versions\Noise and Vibration\Map_Versions\Noise and Vibration\11x17_WEB.mxd | Last Updated: 08.21.2017



0 250 500
 Feet
 1 inch = 500 feet
 @ 11 x 17 inches
 Projection: Lambert Conformal Conic
 State Plane Virginia North FIPS 4501 Feet
 North American Datum of 1983
 Imagery/Basemap Source: 2015 Bing
 Aerial Imagery; ESRI World Transportation

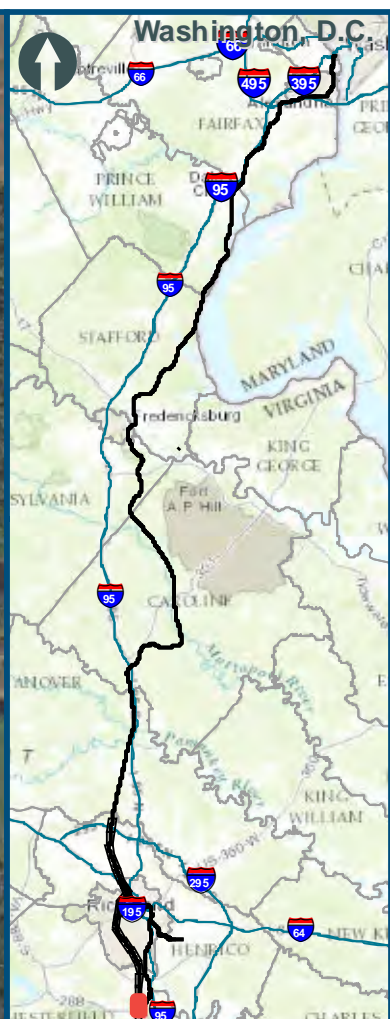
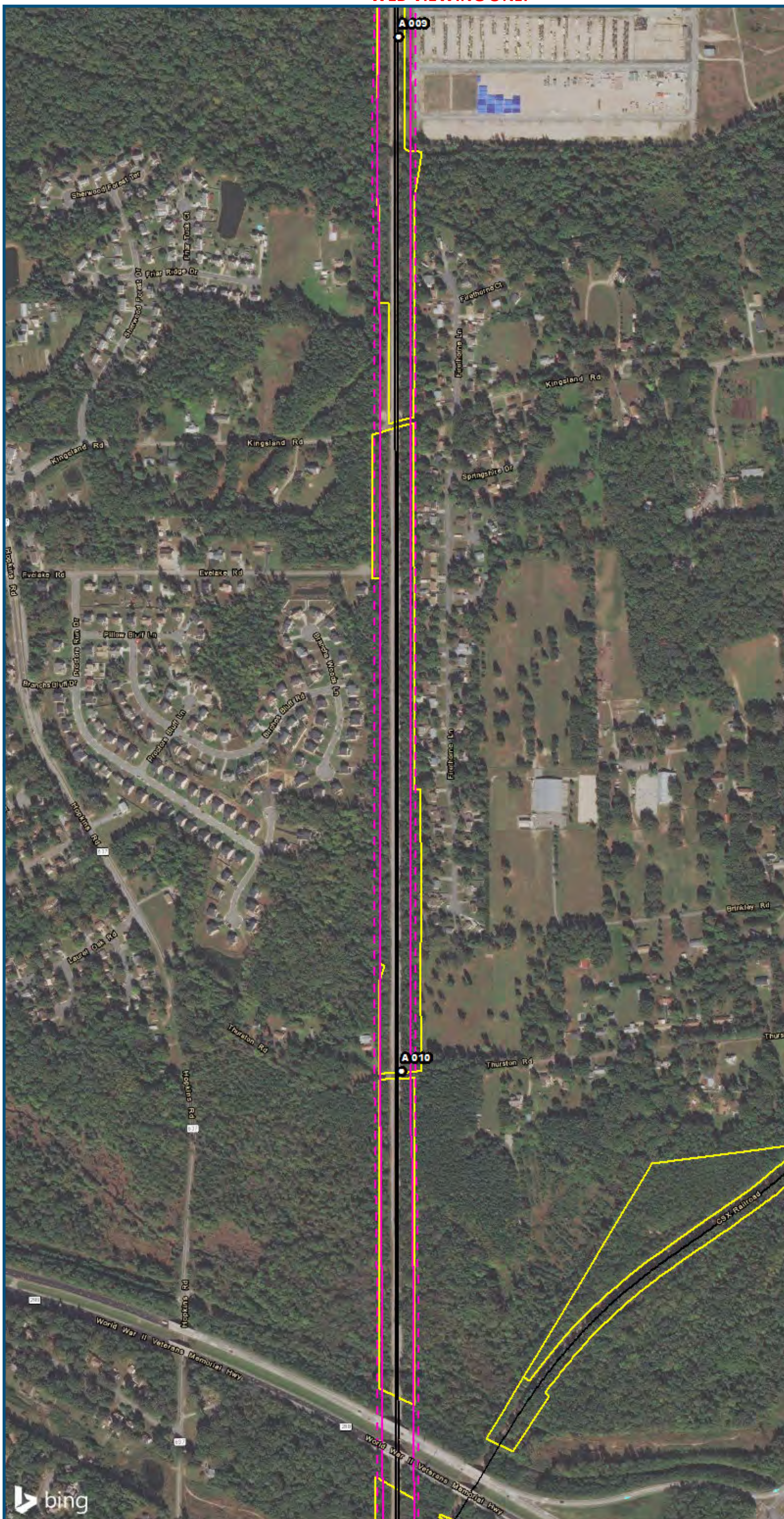
Legend

- Category 2 Vibration Impact Contour
- Category 3 Vibration Impact Contour
- Category 2 Vibration Impacts
- Category 3 Vibration Impacts
- CSXT Mileposts
- Track - Existing
- Stations
- Proposed Stations
- CSXT ROW (County Parcel Data)
- City/County Boundary

**Appendix V
 Vibration Analysis
 Alternative Areas
 6A, 6B-A Line, 6C, 6E**



\\cis-main\gis_data\GIS\Projects\0115-46_VA_Dep\toRail-Pub\toT_ran\transportation\02309056_RAPS-4AltDev-Concept\Eng\map_docs\mxd\01EIS\Tech_Reports\Noise and Vibration\Web_Versions\Noise and Vibration\Mapbook_11x17_WEB.mxd | Last Updated: 08.21.2017

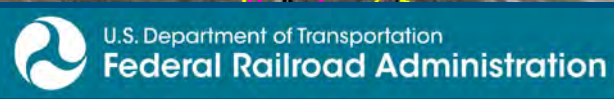


0 250 500
 Feet
 1 inch = 500 feet
 @ 11 x 17 inches
 Projection: Lambert Conformal Conic
 State Plane Virginia North FIPS 4501 Feet
 North American Datum of 1983
 Imagery/Basemap Source: 2015 Bing
 Aerial Imagery; ESRI World Transportation

- Legend**
- - - Category 2 Vibration Impact Contour
 - - - Category 3 Vibration Impact Contour
 - Category 2 Vibration Impacts
 - Category 3 Vibration Impacts
 - CSXT Mileposts
 - Track - Existing
 - Stations
 - Proposed Stations
 - CSXT ROW (County Parcel Data)
 - City/County Boundary

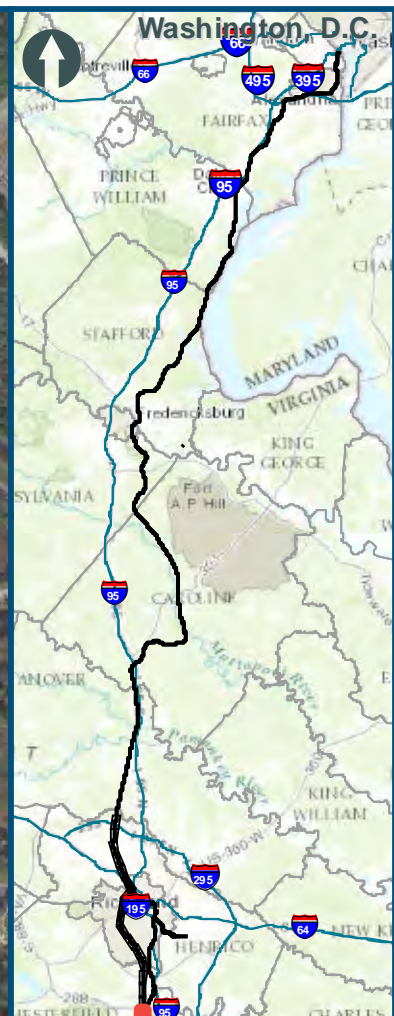
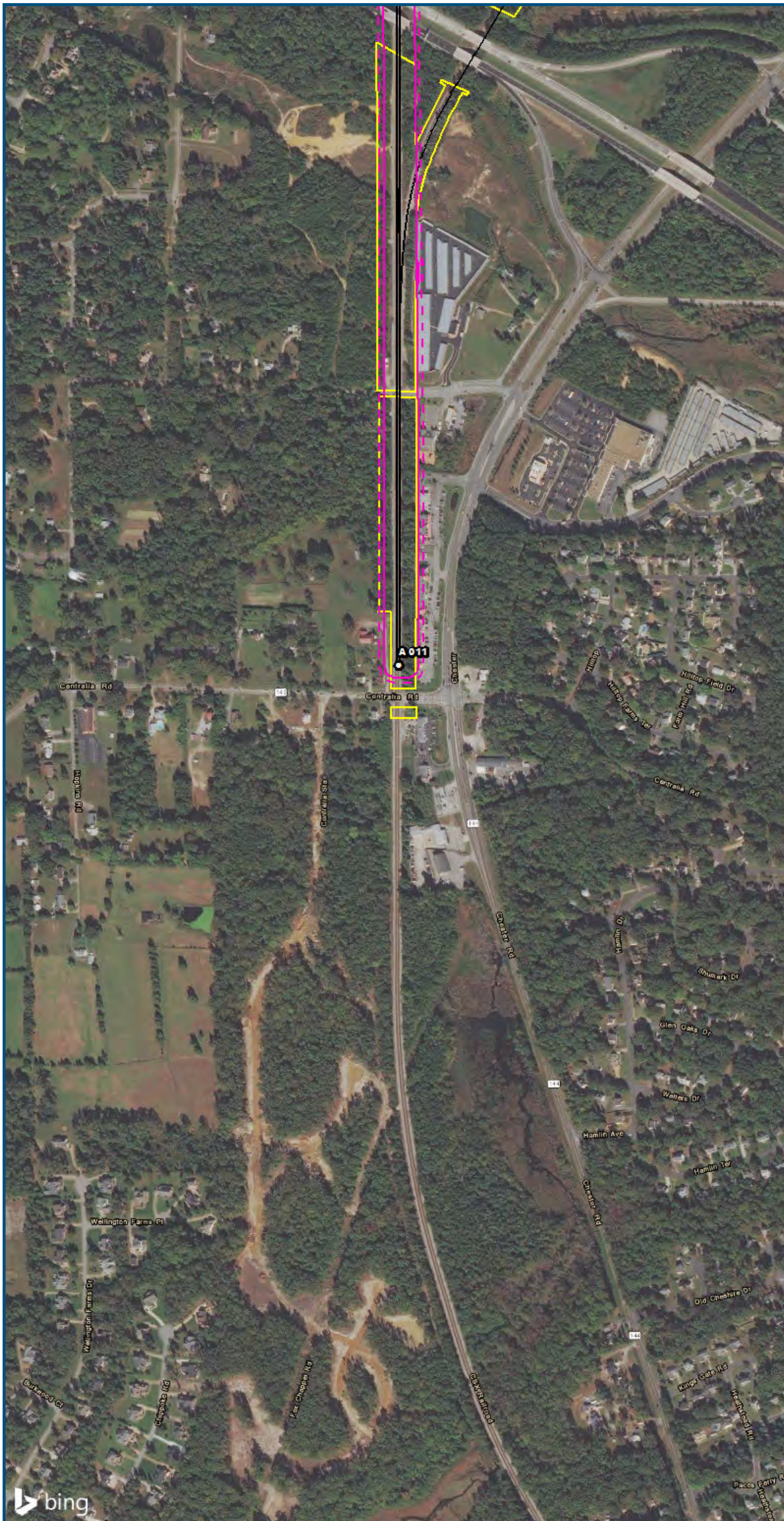
**Appendix V
 Vibration Analysis
 Alternative Areas
 6A, 6B-A Line, 6C, 6E**

\\dcis-main\gis_data\GIS\Projects\0115-46_VA\Depot\Rail-Public\Transportation\02309056_RAPS-4\IT\Dev-Concept\Eng\map_docs\mxd\01\IS\Tech_Reports\Noise and Vibration\Web_Versions\Noise and Vibration\Mapbook_11x17_WEB.mxd | Last Updated: 08.21.2017



www.DC2RVArail.com





0 250 500
 Feet
 1 inch = 500 feet
 @ 11 x 17 inches
 Projection: Lambert Conformal Conic
 State Plane Virginia North FIPS 4501 Feet
 North American Datum of 1983
 Imagery/Basemap Source: 2015 Bing
 Aerial Imagery; ESRI World Transportation

Legend

- Category 2 Vibration Impact Contour
- Category 3 Vibration Impact Contour
- Category 2 Vibration Impacts
- Category 3 Vibration Impacts
- CSXT Mileposts
- Track - Existing
- Stations
- Proposed Stations
- CSXT ROW (County Parcel Data)
- City/County Boundary

**Appendix V
 Vibration Analysis
 Alternative Areas
 6A, 6B-A Line, 6C, 6E**

\\dcis-main\gis_data\GIS\Projects\0115-45_VA\Depot\Rail-Public\Transportation\02307566_RAPS-4\IT\Dev-Concept\Eng\map_docs\mxd\01EIS\Tech_Reports\Noise and Vibration\Map_Versions\Noise and Vibration\11x17_WEB.mxd | Last Updated: 08.21.2017