

0 250 500  
 Feet  
 1 inch = 500 feet  
 @ 11 x 17 inches  
 Projection: Lambert Conformal Conic  
 State Plane Virginia North FIPS 4501 Feet  
 North American Datum of 1983  
 Imagery/Basemap Source: 2015 Bing  
 Aerial Imagery; ESRI World Transportation

**Legend**

- Category 2 Vibration Impact Contour
- Category 3 Vibration Impact Contour
- Category 2 Vibration Impacts
- Category 3 Vibration Impacts
- CSXT Mileposts
- Track - Existing
- Stations
- Proposed Stations
- CSXT ROW (County Parcel Data)
- City/County Boundary

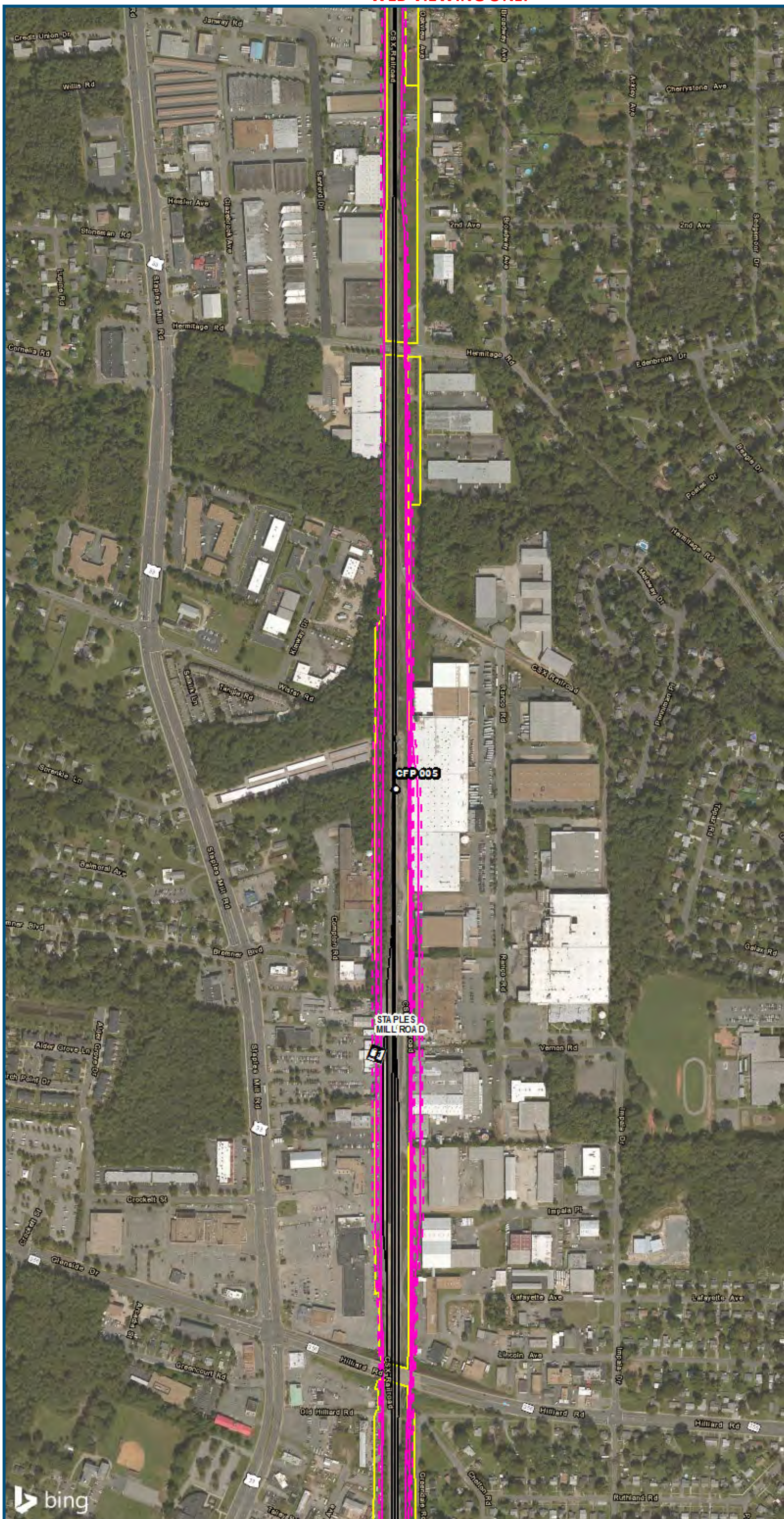
**Appendix W  
 Vibration Analysis  
 Alternative Areas  
 6B-S Line, 6D, 6F, 6G**



\\dcis-main\gis\_data\GIS\Projects\0115-45\_VA\Depot\Rail-Public\Transportation\0239056\_RAPS-4AltDev-Concept\Eng\map\_docs\mxd\01EIS\Tech\_Reports\NoiseandVibration\Web\_Versions\NoiseandVibration\11x17\_WEB.mxd | Last Updated: 08.21.2017





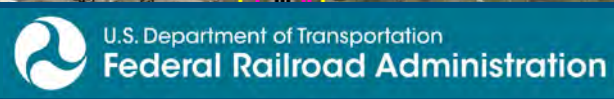


0 250 500  
 Feet  
 1 inch = 500 feet  
 @ 11 x 17 inches  
 Projection: Lambert Conformal Conic  
 State Plane Virginia North FIPS 4501 Feet  
 North American Datum of 1983  
 Imagery/Basemap Source: 2015 Bing  
 Aerial Imagery; ESRI World Transportation

- Legend**
- Category 2 Vibration Impact Contour
  - Category 3 Vibration Impact Contour
  - Category 2 Vibration Impacts
  - Category 3 Vibration Impacts
  - CSXT Mileposts
  - Track - Existing
  - Stations
  - Proposed Stations
  - CSXT ROW (County Parcel Data)
  - City/County Boundary

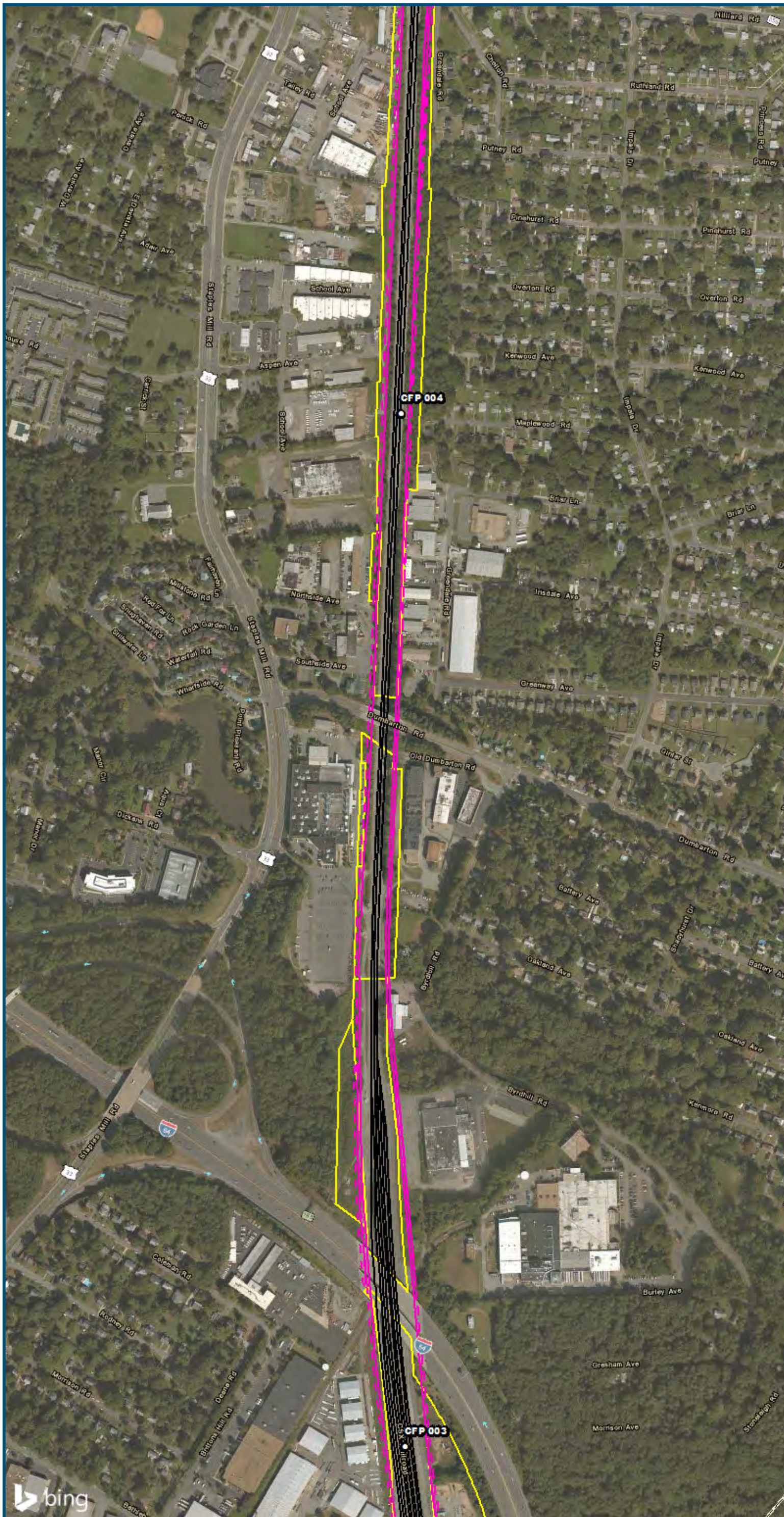
**Appendix W  
 Vibration Analysis  
 Alternative Areas  
 6B-S Line, 6D, 6F, 6G**

\\dcis-main\gis\_data\GIS\Projects\0115-45\_VA\Depot\RailtoPub\fcT transportation\02309056\_RAPS-4\11Dev-Concept\Eng\map\_docs\mxd\0115-45\_VA\Mapbook\_11x17\_WEB.mxd | Last Updated: 08.21.2017



www.DC2RVArail.com





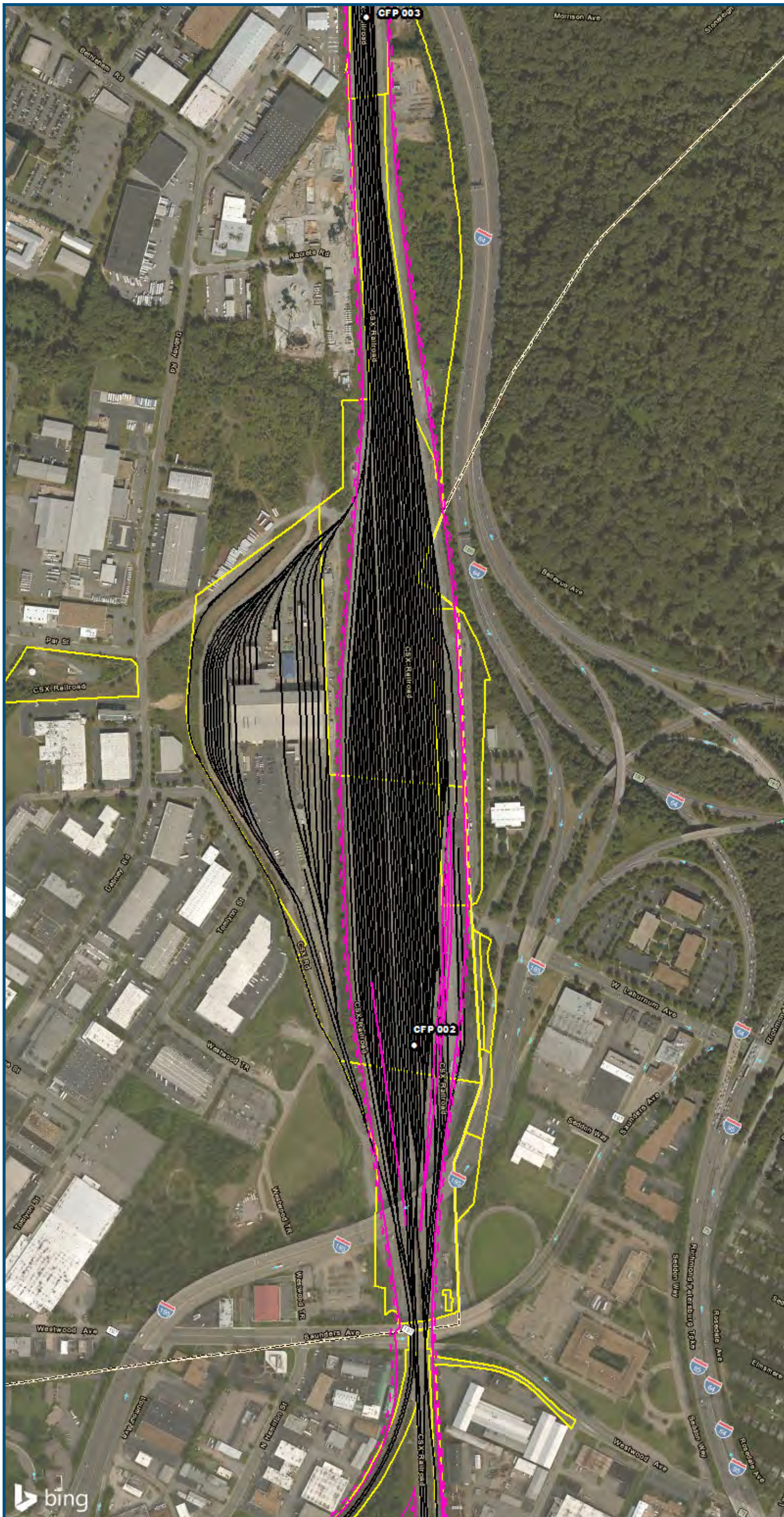
0 250 500  
 Feet  
 1 inch = 500 feet  
 @ 11 x 17 inches  
 Projection: Lambert Conformal Conic  
 State Plane Virginia North FIPS 4501 Feet  
 North American Datum of 1983  
 Imagery/Basemap Source: 2015 Bing  
 Aerial Imagery; ESRI World Transportation

**Legend**

- Category 2 Vibration Impact Contour
- Category 3 Vibration Impact Contour
- Category 2 Vibration Impacts
- Category 3 Vibration Impacts
- CSXT Mileposts
- Track - Existing
- Stations
- Proposed Stations
- CSXT ROW (County Parcel Data)
- City/County Boundary

**Appendix W  
 Vibration Analysis  
 Alternative Areas  
 6B-S Line, 6D, 6F, 6G**

\\dcis-main\gis\_data\GIS\Projects\0115-46\_VA Dept of Rail\Public\T Transportation\0239056\_RAPS-4\IT Dev-Concept\Eng\map\_docs\mxd\01EIS\Tech Reports\Noise and Vibration\Web\_Versions\Noise and Vibration\11x17\_WEB.mxd | Last Updated: 08.21.2017



0 250 500  
 Feet  
 1 inch = 500 feet  
 @ 11 x 17 inches  
 Projection: Lambert Conformal Conic  
 State Plane Virginia North FIPS 4501 Feet  
 North American Datum of 1983  
 Imagery/Basemap Source: 2015 Bing  
 Aerial Imagery; ESRI World Transportation

**Legend**

- Category 2 Vibration Impact Contour
- Category 3 Vibration Impact Contour
- Category 2 Vibration Impacts
- Category 3 Vibration Impacts
- CSXT Mileposts
- Track - Existing
- Stations
- Proposed Stations
- CSXT ROW (County Parcel Data)
- City/County Boundary

**Appendix W  
 Vibration Analysis  
 Alternative Areas  
 6B-S Line, 6D, 6F, 6G**





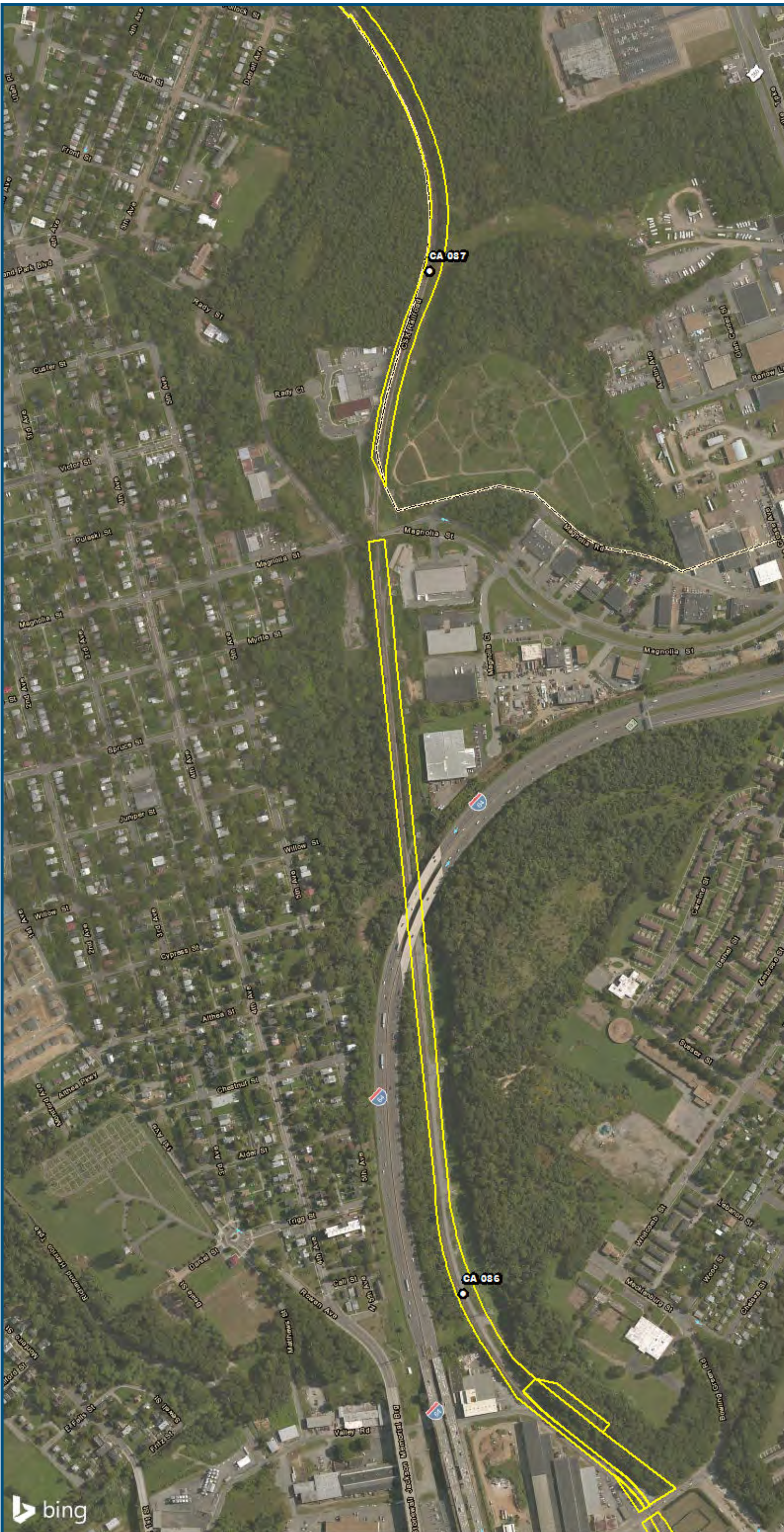
0 250 500  
 Feet  
 1 inch = 500 feet  
 @ 11 x 17 inches  
 Projection: Lambert Conformal Conic  
 State: Plane Virginia North FIPS 4501 Feet  
 North American Datum of 1983  
 Imagery/Basemap Source: 2015 Bing  
 Aerial Imagery; ESRI World Transportation

**Legend**

- Category 2 Vibration Impact Contour
- Category 3 Vibration Impact Contour
- Category 2 Vibration Impacts
- Category 3 Vibration Impacts
- CSXT Mileposts
- Track - Existing
- Stations
- Proposed Stations
- CSXT ROW (County Parcel Data)
- City/County Boundary

**Appendix W**  
**Vibration Analysis**  
**Alternative Areas**  
**6B-S Line, 6D, 6F, 6G**





0 250 500

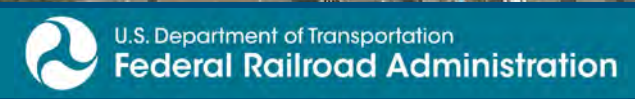
Feet  
1 inch = 500 feet  
@ 11 x 17 inches

Projection: Lambert Conformal Conic  
State Plane Virginia North FIPS 4501 Feet  
North American Datum of 1983  
Imagery/Basemap Source: 2015 Bing  
Aerial Imagery; ESRI World Transportation

- Legend**
- Category 2 Vibration Impact Contour
  - Category 3 Vibration Impact Contour
  - Category 2 Vibration Impacts
  - Category 3 Vibration Impacts
  - CSXT Mileposts
  - Track - Existing
  - Stations
  - Proposed Stations
  - CSXT ROW (County Parcel Data)
  - City/County Boundary

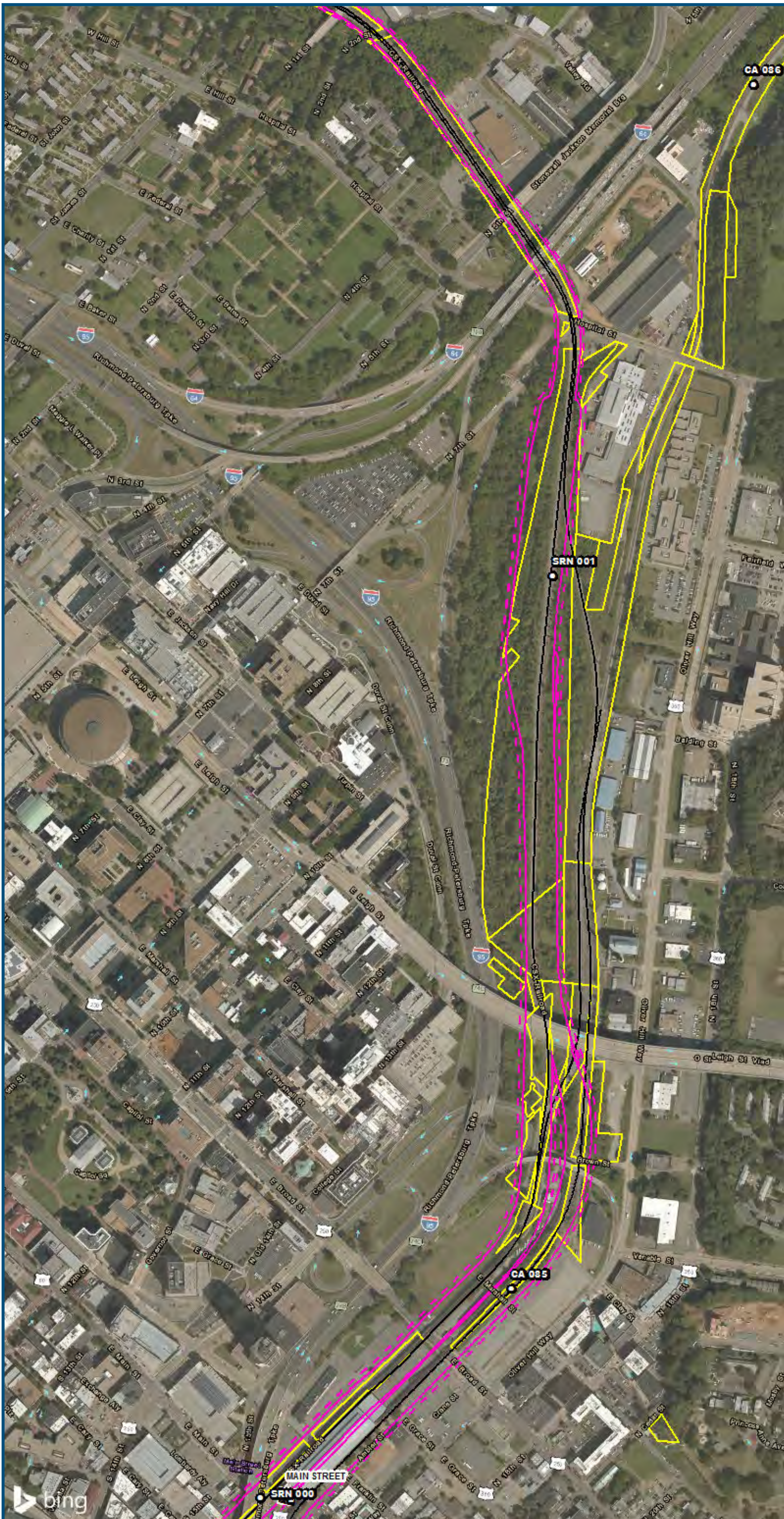
**Appendix W**  
**Vibration Analysis**  
**Alternative Areas**  
**6B-S Line, 6D, 6F, 6G**

\\dcis-main\gis\_data\GIS\Projects\0115-46\_VA\_Depot\Rail-Public\Transportation\0239056\_RAPS-4\Dev-Concept\Eng\map\_docs\mxd\02\GIS\Tech\_Reports\Noise and Vibration\Map\_Versions\Vibration\_Area6BS\_6D\_6F\_6G\_Mapbook\_11x17\_WEB.mxd | Last Updated: 08.21.2017



[www.DC2RVArail.com](http://www.DC2RVArail.com)





0 250 500  
 Feet  
 1 inch = 500 feet  
 @ 11 x 17 inches  
 Projection: Lambert Conformal Conic  
 State Plane Virginia North FIPS 4501 Feet  
 North American Datum of 1983  
 Imagery/Basemap Source: 2015 Bing  
 Aerial Imagery; ESRI World Transportation

**Legend**

- Category 2 Vibration Impact Contour
- Category 3 Vibration Impact Contour
- Category 2 Vibration Impacts
- Category 3 Vibration Impacts
- CSXT Mileposts
- Track - Existing
- Stations
- Proposed Stations
- CSXT ROW (County Parcel Data)
- City/County Boundary

**Appendix W  
 Vibration Analysis  
 Alternative Areas  
 6B-S Line, 6D, 6F, 6G**

V:\GIS\main\gis\_data\GIS\Projects\0115-45\_VA\_Depot\RailtoPublicTransportation\0239056\_RAPS-4\ITDev-Concept\Eng\map\_docs\mxd\01EIS\Tech\_Reports\NoiseandVibration\Map\_Versions\NoiseandVibration\_Area6BS\_6D\_6F\_6G\_Mapbook\_11x17\_WEB.mxd | Last Updated: 08.21.2017

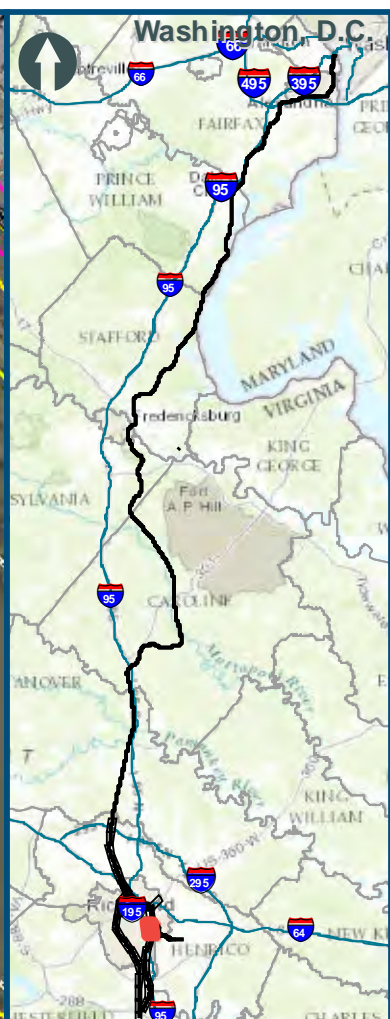
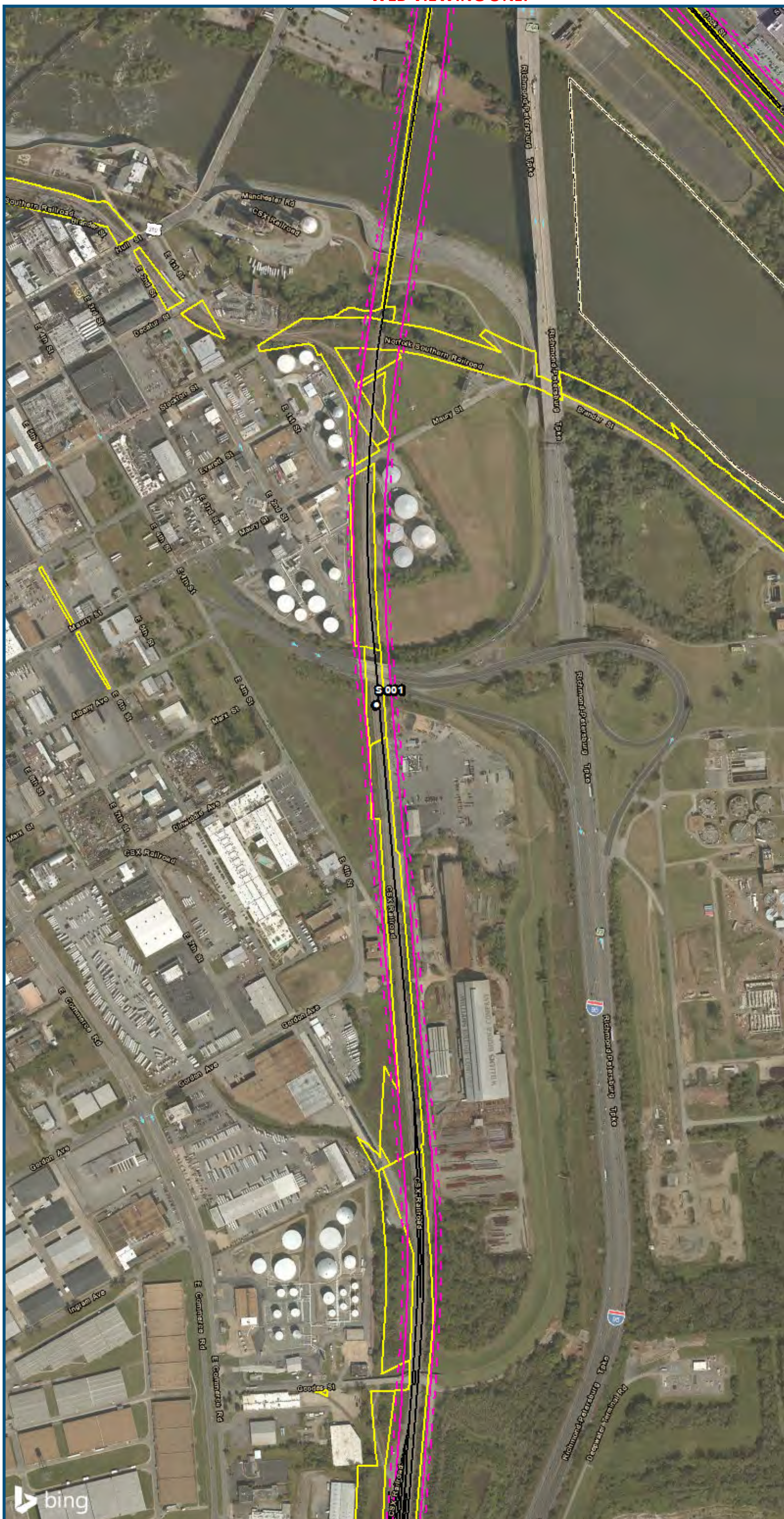


0 250 500  
 Feet  
 1 inch = 500 feet  
 @ 11 x 17 inches  
 Projection: Lambert Conformal Conic  
 State Plane Virginia North FIPS 4501 Feet  
 North American Datum of 1983  
 Imagery/Basemap Source: 2015 Bing  
 Aerial Imagery; ESRI World Transportation

**Legend**

- Category 2 Vibration Impact Contour
- Category 3 Vibration Impact Contour
- Category 2 Vibration Impacts
- Category 3 Vibration Impacts
- CSXT Mileposts
- Track - Existing
- Stations
- Proposed Stations
- CSXT ROW (County Parcel Data)
- City/County Boundary

**Appendix W  
 Vibration Analysis  
 Alternative Areas  
 6B-S Line, 6D, 6F, 6G**



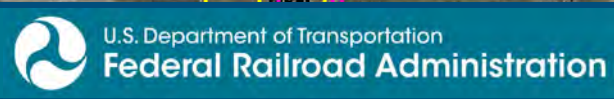
0 250 500  
 Feet  
 1 inch = 500 feet  
 @ 11 x 17 inches  
 Projection: Lambert Conformal Conic  
 State Plane Virginia North FIPS 4501 Feet  
 North American Datum of 1983  
 Imagery/Basemap Source: 2015 Bing  
 Aerial Imagery; ESRI World Transportation

**Legend**

- Category 2 Vibration Impact Contour
- Category 3 Vibration Impact Contour
- Category 2 Vibration Impacts
- Category 3 Vibration Impacts
- CSXT Mileposts
- Track - Existing
- Stations
- Proposed Stations
- CSXT ROW (County Parcel Data)
- City/County Boundary

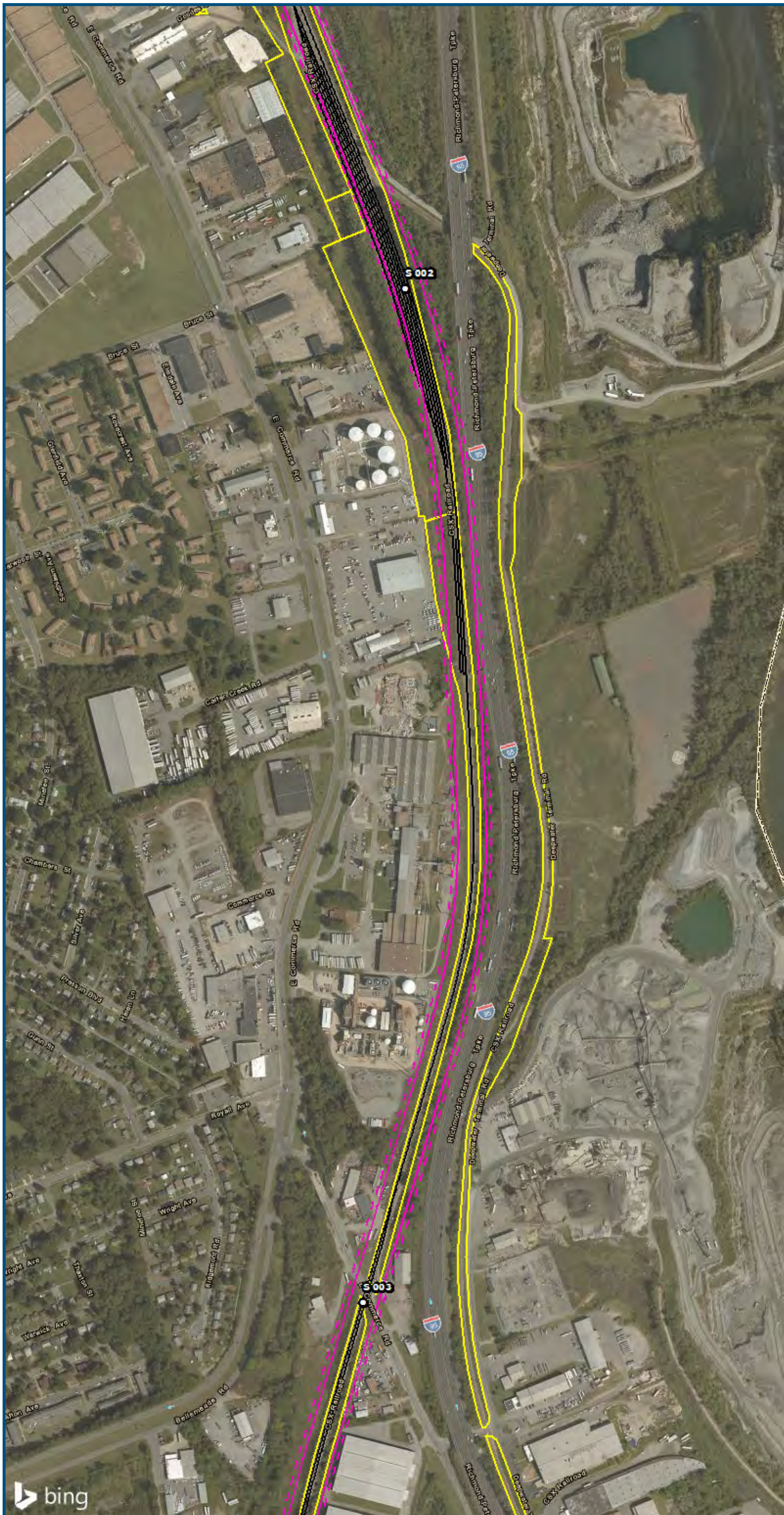
**Appendix W**  
**Vibration Analysis**  
**Alternative Areas**  
**6B-S Line, 6D, 6F, 6G**

\\dc1s-main\gis\_data\GIS\Projects\0115-46\_VA Dept of Rail-Public Transportation\0239056\_RAPS-4AltDev-Concept\Eng\map\_docs\mxd\01EIS\Tech\_Reports\Noise and Vibration\Map\_Versions\Noise and Vibration\_11x17\_WEB.mxd | Last Updated: 08.21.2017



[www.DC2RVArail.com](http://www.DC2RVArail.com)

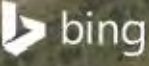




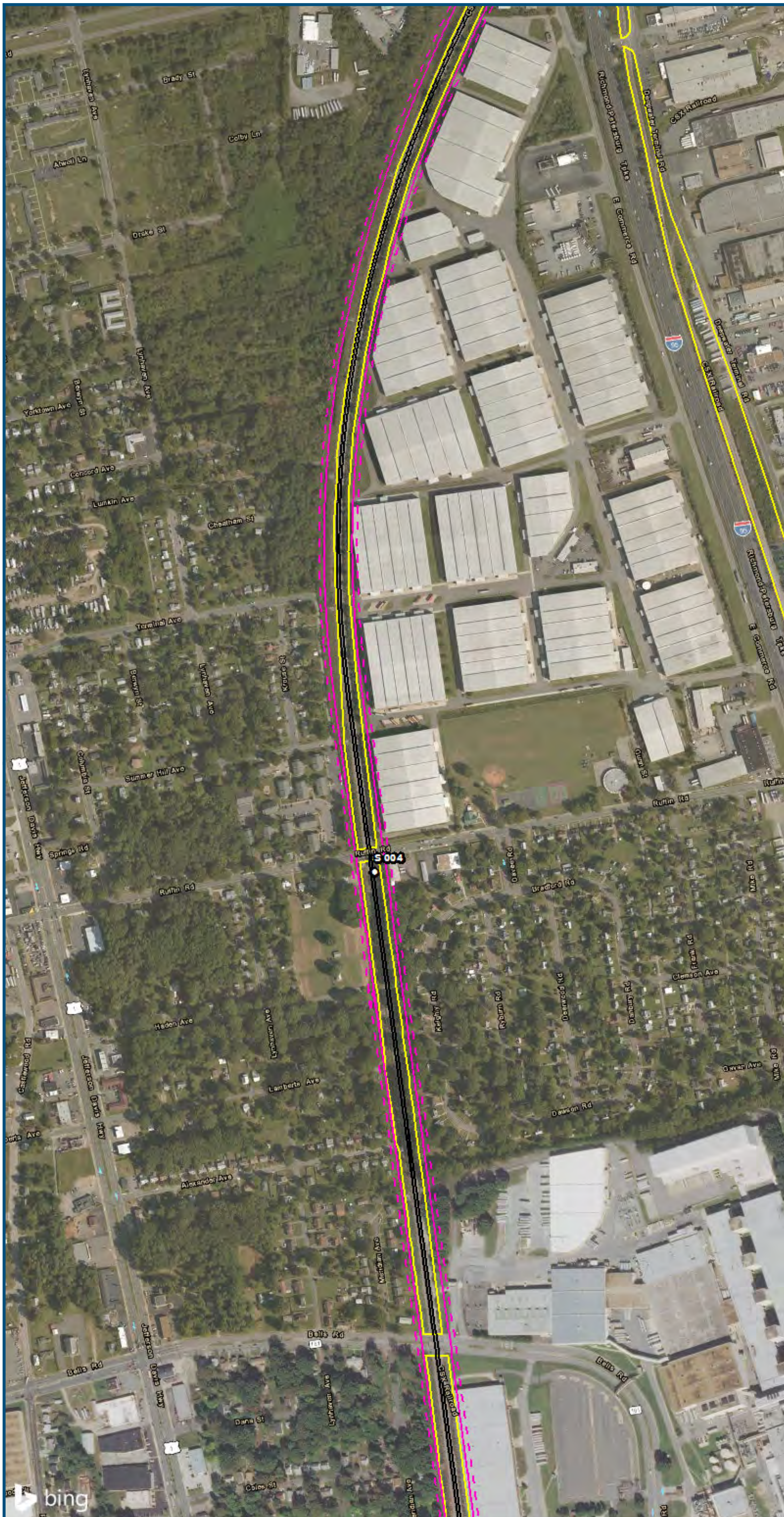
0 250 500  
 Feet  
 1 inch = 500 feet  
 @ 11 x 17 inches  
 Projection: Lambert Conformal Conic  
 State Plane Virginia North FIPS 4501 Feet  
 North American Datum of 1983  
 Imagery/Basemap Source: 2015 Bing  
 Aerial Imagery; ESRI World Transportation

- Legend**
- Category 2 Vibration Impact Contour
  - Category 3 Vibration Impact Contour
  - Category 2 Vibration Impacts
  - Category 3 Vibration Impacts
  - CSXT Mileposts
  - Track - Existing
  - Stations
  - Proposed Stations
  - CSXT ROW (County Parcel Data)
  - City/County Boundary

**Appendix W  
 Vibration Analysis  
 Alternative Areas  
 6B-S Line, 6D, 6F, 6G**



\\dcis-main\gis\_data\GIS\Projects\0115-45\_VA\Depot\Rail-Public\Transportation\02309056\_RAPS-4\ITDev-Concept\Eng\map\_docs\mxd\01EIS\Tech\_Reports\NoiseandVibration\Web\_Versions\NoiseandVibration\_Area6BS\_6D\_6F\_6G\_Mapbook\_11x17\_WEB.mxd | Last Updated: 08.21.2017



0 250 500  
 Feet  
 1 inch = 500 feet  
 @ 11 x 17 inches  
 Projection: Lambert Conformal Conic  
 State Plane Virginia North FIPS 4501 Feet  
 North American Datum of 1983  
 Imagery/Basemap Source: 2015 Bing  
 Aerial Imagery; ESRI World Transportation

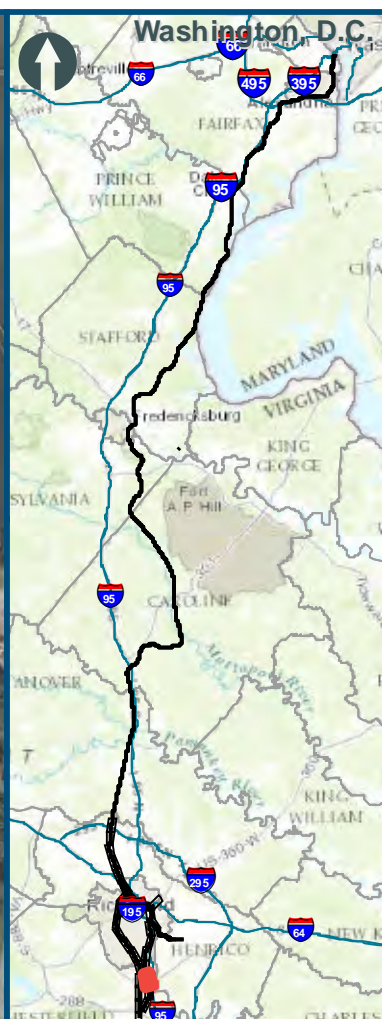
**Legend**

- Category 2 Vibration Impact Contour
- Category 3 Vibration Impact Contour
- Category 2 Vibration Impacts
- Category 3 Vibration Impacts
- CSXT Mileposts
- Track - Existing
- Stations
- Proposed Stations
- CSXT ROW (County Parcel Data)
- City/County Boundary

**Appendix W  
 Vibration Analysis  
 Alternative Areas  
 6B-S Line, 6D, 6F, 6G**

\\dcis-main\gis\_data\GIS\Projects\0115-46\_VA\Deplo\Rail-Pub\T\Transportation\0239056\_RAPS-4AltDev-Concept\Eng\map\_docs\mxd\0115-46\_WEB.mxd | Last Updated: 08.21.2017





0 250 500  
 Feet  
 1 inch = 500 feet  
 @ 11 x 17 inches  
 Projection: Lambert Conformal Conic  
 State Plane Virginia North FIPS 4501 Feet  
 North American Datum of 1983  
 Imagery/Basemap Source: 2015 Bing  
 Aerial Imagery; ESRI World Transportation

- Legend**
- Category 2 Vibration Impact Contour
  - Category 3 Vibration Impact Contour
  - Category 2 Vibration Impacts
  - Category 3 Vibration Impacts
  - CSXT Mileposts
  - Track - Existing
  - Stations
  - Proposed Stations
  - CSXT ROW (County Parcel Data)
  - City/County Boundary

**Appendix W**  
**Vibration Analysis**  
**Alternative Areas**  
**6B-S Line, 6D, 6F, 6G**

\\dcis-main\gis\_data\GIS\Projects\0115-46\_VA\_Depot\Rail-Public\Transportation\02309056\_RAPS-4AltDev-Concept\Eng\map\_docs\mxd\01\Mapbook\_11x17\_WEB.mxd | Last Updated: 08.21.2017



www.DC2RVArail.com



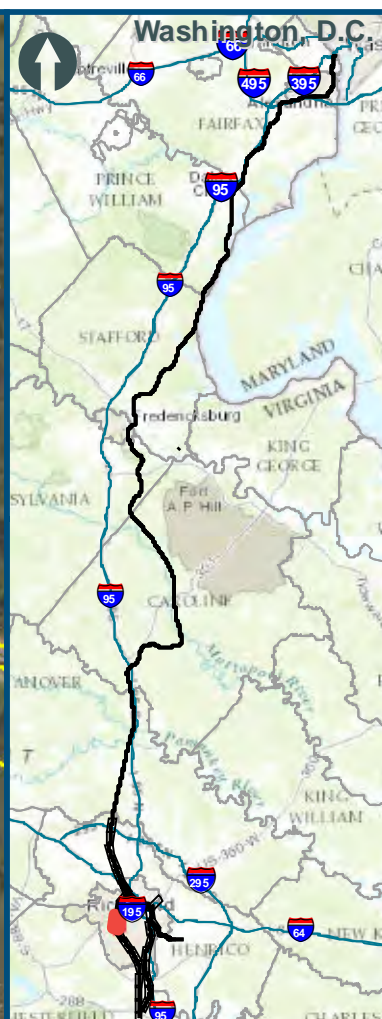












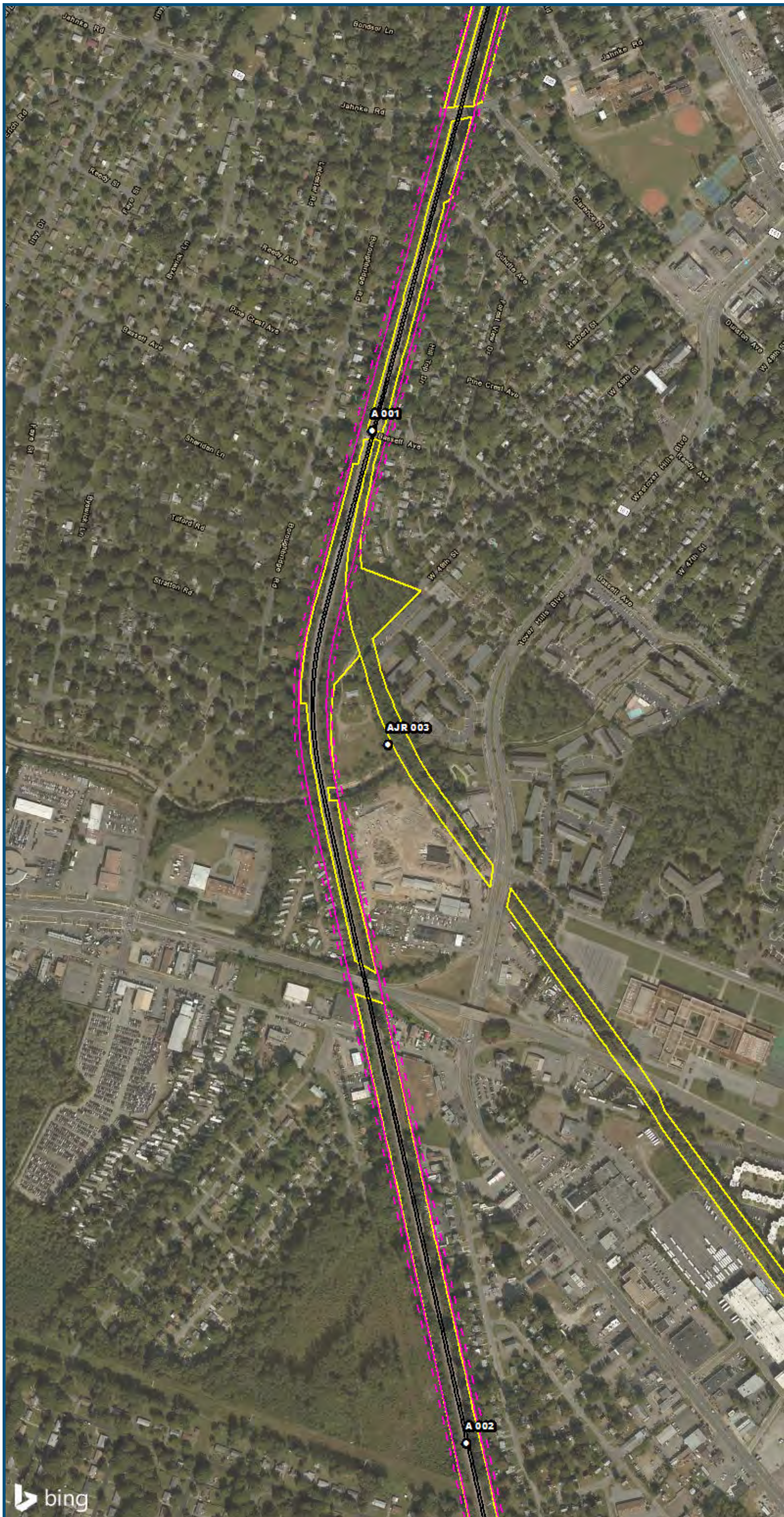
0 250 500  
 Feet  
 1 inch = 500 feet  
 @ 11 x 17 inches  
 Projection: Lambert Conformal Conic  
 State Plane Virginia North FIPS 4501 Feet  
 North American Datum of 1983  
 Imagery/Basemap Source: 2015 Bing  
 Aerial Imagery; ESRI World Transportation

**Legend**

- Category 2 Vibration Impact Contour
- Category 3 Vibration Impact Contour
- Category 2 Vibration Impacts
- Category 3 Vibration Impacts
- CSXT Mileposts
- Track - Existing
- Stations
- Proposed Stations
- CSXT ROW (County Parcel Data)
- City/County Boundary

**Appendix W**  
**Vibration Analysis**  
**Alternative Areas**  
**6B-S Line, 6D, 6F, 6G**

\\dcis-main\gis\_data\GIS\Projects\0115-46\_VA\_Dep\Rail-Public\T-Transportation\02309056\_RAPS-4\IT-Dev-Concept\Eng\map\_docs\mxd\01EIS\Tech\_Reports\Noise and Vibration\Web\_Versions\Vibration\_Area6BS\_6D\_6F\_6G\_Mapbook\_11x17\_WEB.mxd | Last Updated: 08.21.2017

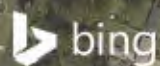


0 250 500  
 Feet  
 1 inch = 500 feet  
 @ 11 x 17 inches  
 Projection: Lambert Conformal Conic  
 State Plane Virginia North FIPS 4501 Feet  
 North American Datum of 1983  
 Imagery/Basemap Source: 2015 Bing  
 Aerial Imagery; ESRI World Transportation

**Legend**

- Category 2 Vibration Impact Contour
- Category 3 Vibration Impact Contour
- Category 2 Vibration Impacts
- Category 3 Vibration Impacts
- CSXT Mileposts
- Track - Existing
- Stations
- Proposed Stations
- CSXT ROW (County Parcel Data)
- City/County Boundary

**Appendix W  
 Vibration Analysis  
 Alternative Areas  
 6B-S Line, 6D, 6F, 6G**



U.S. Department of Transportation  
**Federal Railroad Administration**

[www.DC2RVArail.com](http://www.DC2RVArail.com)



\\dcis-main\gis\_data\GIS\Projects\0115-46\_VA\_DepotofRalls-Public\Tech\_Reports\NoiseandVibration\Map\_Versions\NoiseandVibration\Map\_Versions\NoiseandVibration\Area6BS\_6D\_6F\_6G\_Mapbook\_11x17\_WEB.mxd | Last Updated: 08.21.2017















