

California High-Speed Rail Authority
Fresno to Bakersfield Section

**Draft Supplemental
Environmental Impact Report / Environmental Impact Statement**

**Volume III:
Maintenance of Infrastructure Facility Plans, Profiles and Cross Sections**

March 2017



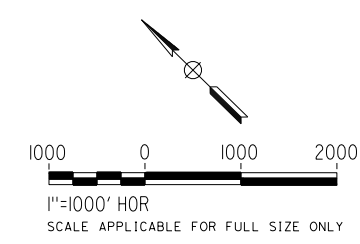
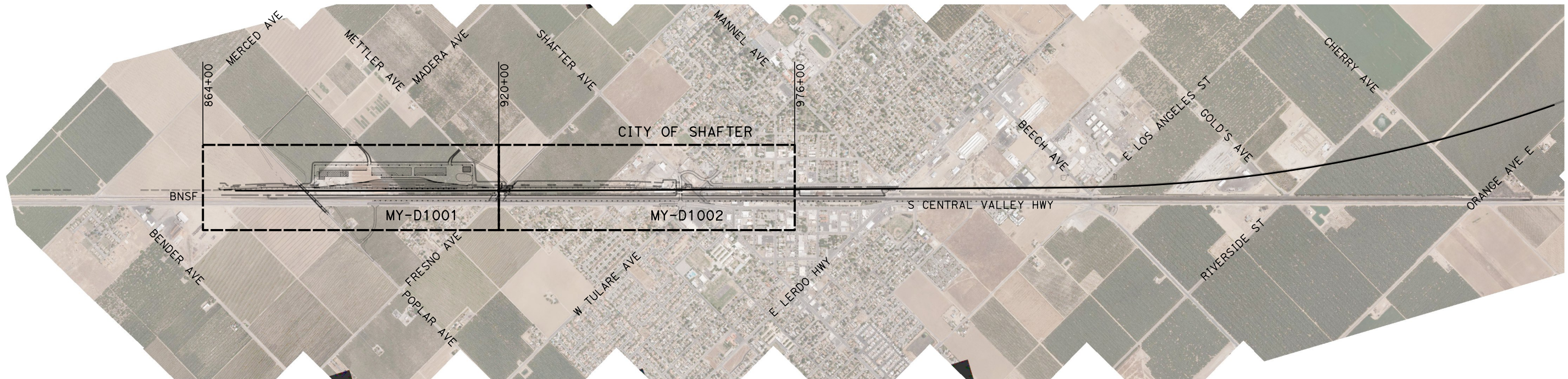
Projects\701206.N_BFSS\00_CADD\Sheet_Files\Maintenance_Sheets\BFSSA-MY-B0002_SHA.dgn

\$PLTDRVS\$

\$PENTBLS\$

10/26/2016:08:42 PM

TYLIN\jtrejo



REV	DATE	BY	CHK	APP	DESCRIPTION

DESIGNED BY
J. TREJO
DRAWN BY
J. TREJO
CHECKED BY
E. WINTERS
IN CHARGE
P. PIENTON
DATE
10/28/2016

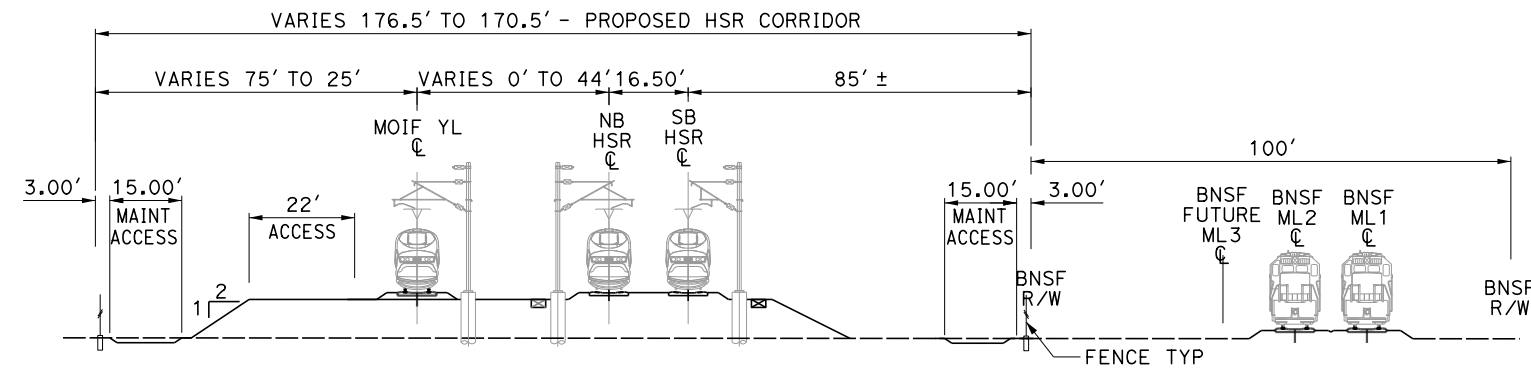
**RECORD SET
PEPD DESIGN
SUBMISSION**



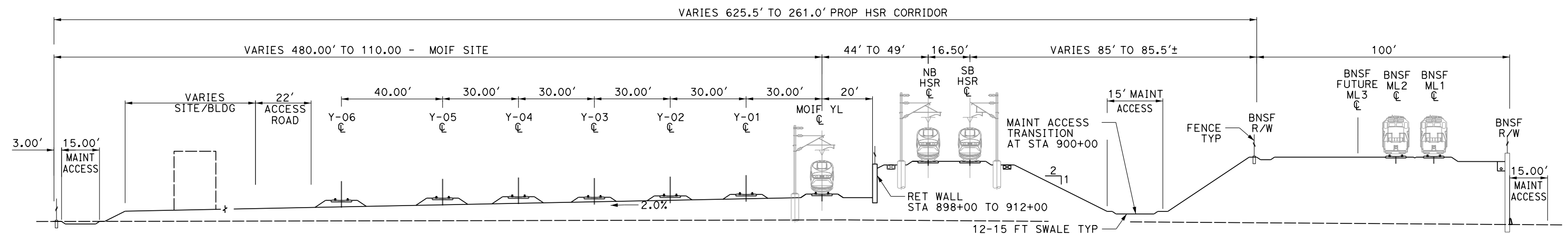
**CALIFORNIA HIGH-SPEED RAIL PROJECT
FRESNO TO BAKERSFIELD**
LOCALLY GENERATED ALTERNATIVE
MAINTENANCE OF INFRASTRUCTURE FACILITY
KEY MAP

CONTRACT NO.
HSR13-44
DRAWING NO.
MY-B0002
SCALE
AS SHOWN
SHEET NO.

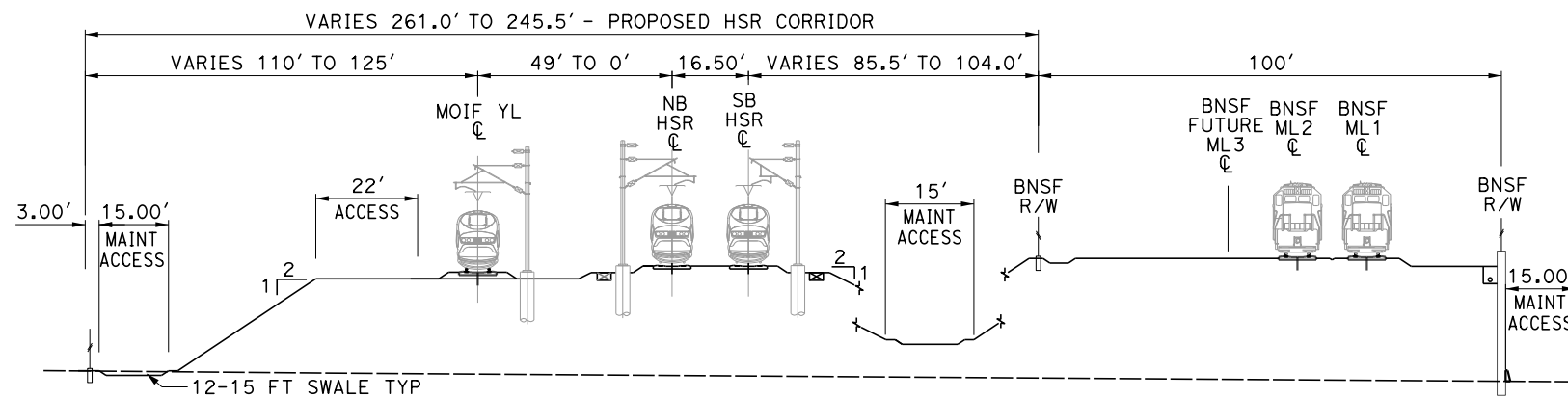
- NOTES:**
1. TRACKFORM IS INDICATIVE.
 2. FOR STRUCTURE DIMENSIONS SEE STRUCTURAL CROSS SECTIONS.
 3. SEE DWG TT-B0013 FOR YARD LEAD BRIDGE TYPICAL SECTION BETWEEN YL STA 920+51 TO 922+63.
 4. DISTANCE BETWEEN HSR SB TRACK AND EXISTING BNSF R/W VARIES FROM 85' AT STA 5880+00 TO 102' AT STA 5952+20.



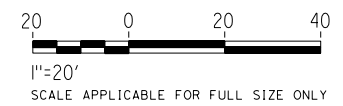
SECTION M1
 HSR AND MOIF YL1 TRACK
 YL STA 867+06 TO 884+74



SECTION M2
 HSR AND MOIF YARD
 YL STA 884+74 TO 918+00



SECTION M3
 HSR AND MOIF YARD
 YL STA 918+00 TO 920+51
 STA 922+63 TO 953+30



Projects\701206.N_BFSS\00_CADD\Sheet_Files\Maintenance_Sheets\BFSSA-MY-B0003_SHA.dgn
 \$PLTDRVS\$
 \$PENTBL\$
 10/26/2016 1:18:43 PM
 TYLIN\jtrejo

REV	DATE	BY	CHK	APP	DESCRIPTION

DESIGNED BY
J. TREJO
 DRAWN BY
J. TREJO
 CHECKED BY
E. WINTERS
 IN CHARGE
P. PIENTON
 DATE
10/28/2016

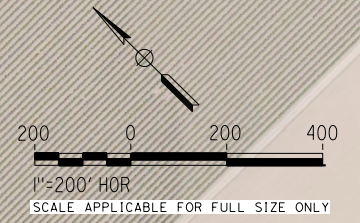
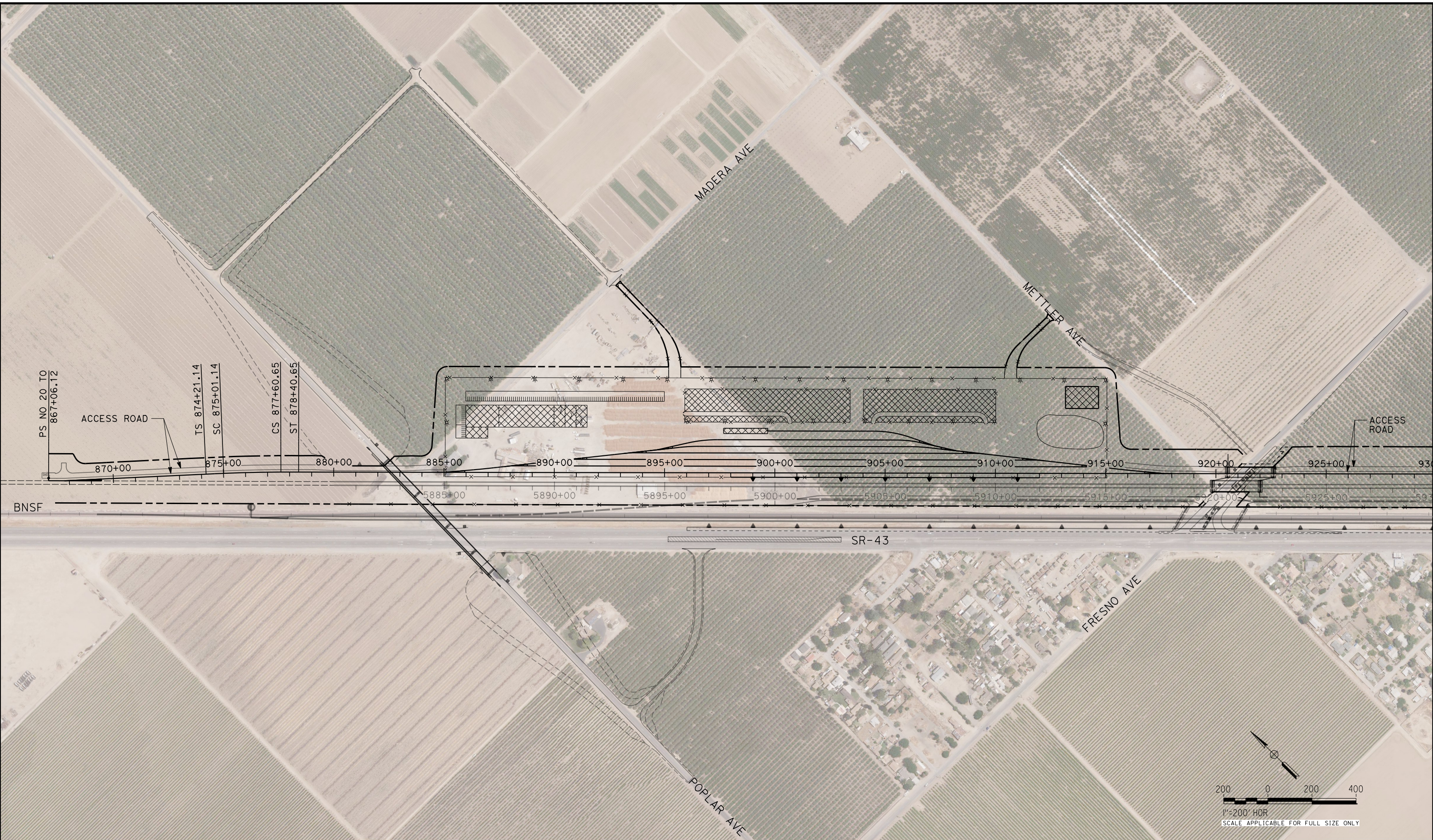
RECORD SET
PEPD DESIGN
SUBMISSION



CALIFORNIA HIGH-SPEED RAIL PROJECT
FRESNO TO BAKERSFIELD
 LOCALLY GENERATED ALTERNATIVE
 MAINTENANCE OF INFRASTRUCTURE FACILITY
 TYPICAL SECTIONS M1 TO M3

CONTRACT NO.
HSR13-44
 DRAWING NO.
MY-B0003
 SCALE
AS SHOWN
 SHEET NO.

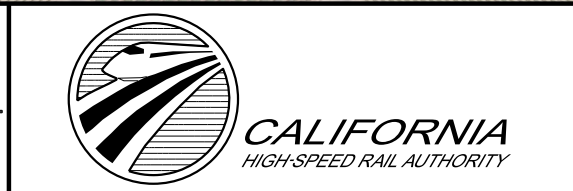
TYLIN\jtrejo 10/26/2016 10:09:20 PM \$PENTBL.S\$ \$PLTDRVS\$ Projects\701206.N_BFSS\00_CADD\Sheet Files\Maintenance Sheets\BFSSA-MY-C1001_SHA.dgn



REV	DATE	BY	CHK	APP	DESCRIPTION

DESIGNED BY
J. TREJO
DRAWN BY
J. TREJO
CHECKED BY
E. WINTERS
IN CHARGE
P. PIENTON
DATE
10/28/2016

**RECORD SET
PEPD DESIGN
SUBMISSION**



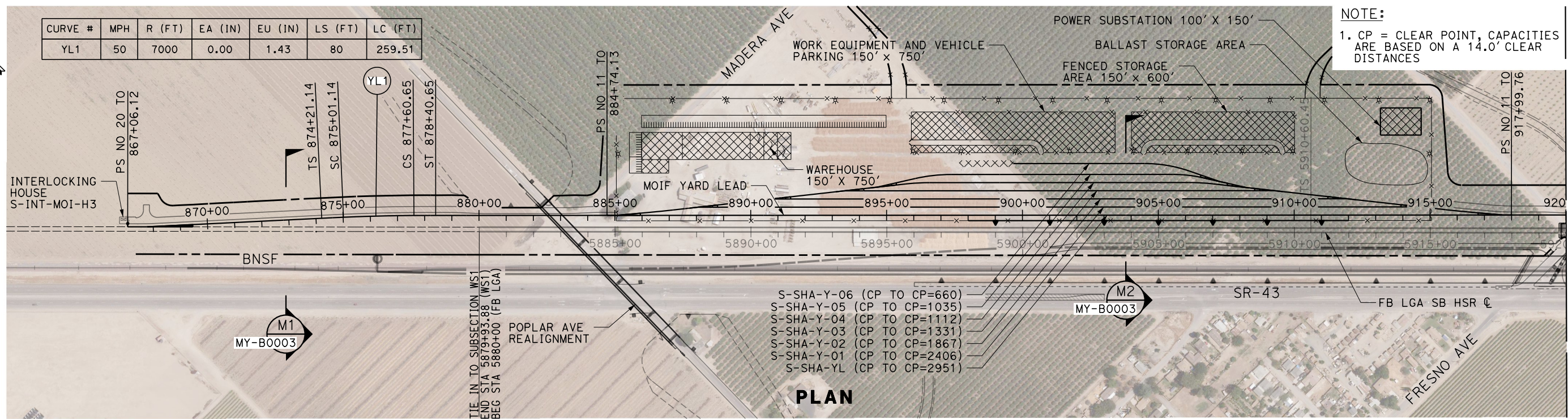
**CALIFORNIA HIGH-SPEED RAIL PROJECT
FRESNO TO BAKERSFIELD**
LOCALLY GENERATED ALTERNATIVE
MAINTENANCE OF INFRASTRUCTURE FACILITY
SITE PLAN

CONTRACT NO.
HSR13-44
DRAWING NO.
MY-C1001
SCALE
AS SHOWN
SHEET NO.

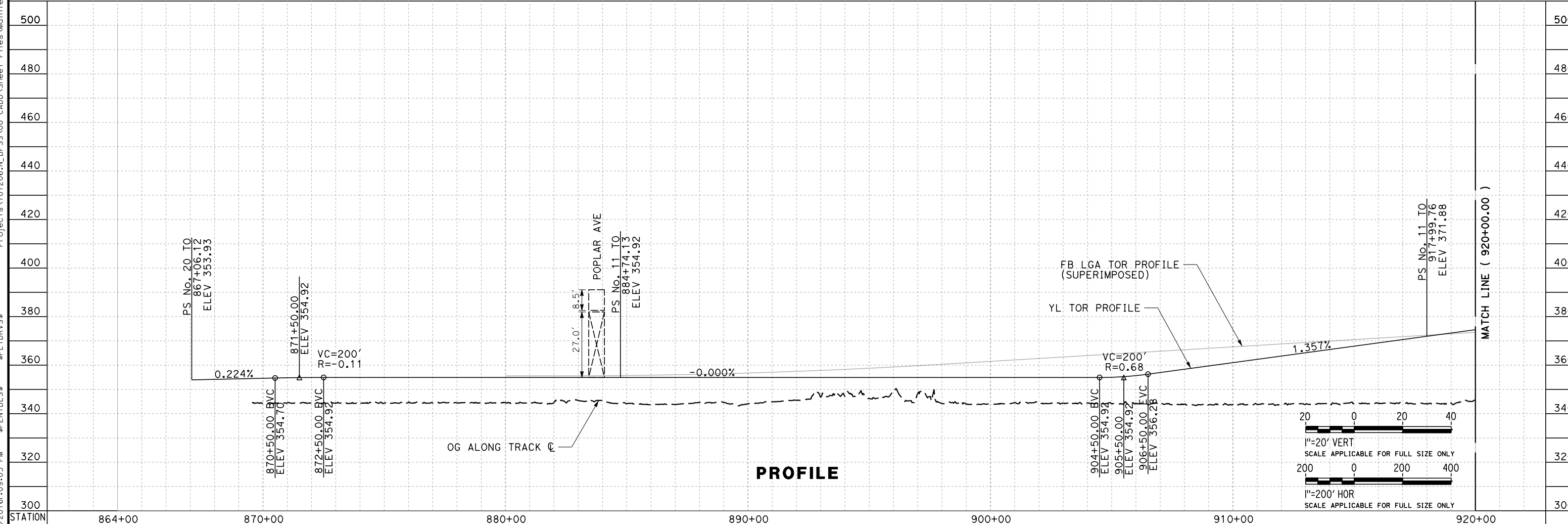
TYLIN\jtrejo 10/26/2016 10:09:03 PM \$PENTBL.S\$ \$PLTDRVS\$ Projects\701206.N.BFSS\00_CADD\Sheet Files\Maintenance Sheets\BFSSA-MY-D1001_SHA.dgn

CURVE #	MPH	R (FT)	EA (IN)	EU (IN)	LS (FT)	LC (FT)
YL1	50	7000	0.00	1.43	80	259.51

NOTE:
1. CP = CLEAR POINT, CAPACITIES ARE BASED ON A 14.0' CLEAR DISTANCES



PLAN



PROFILE

REV	DATE	BY	CHK	APP	DESCRIPTION

DESIGNED BY
J. TREJO
DRAWN BY
N. OLINO
CHECKED BY
E. WINTERS
IN CHARGE
P. PIENTON
DATE
10/28/2016

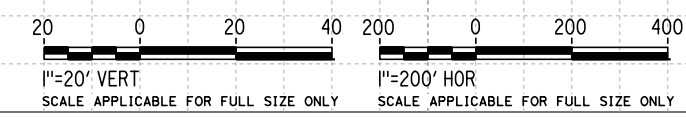
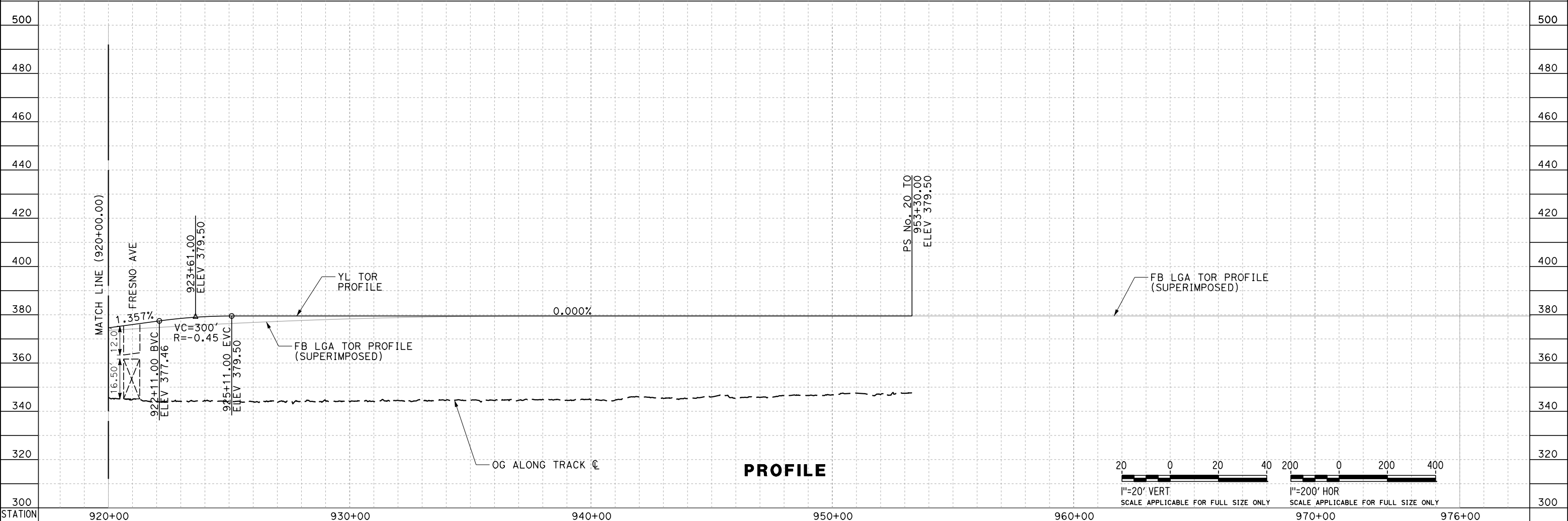
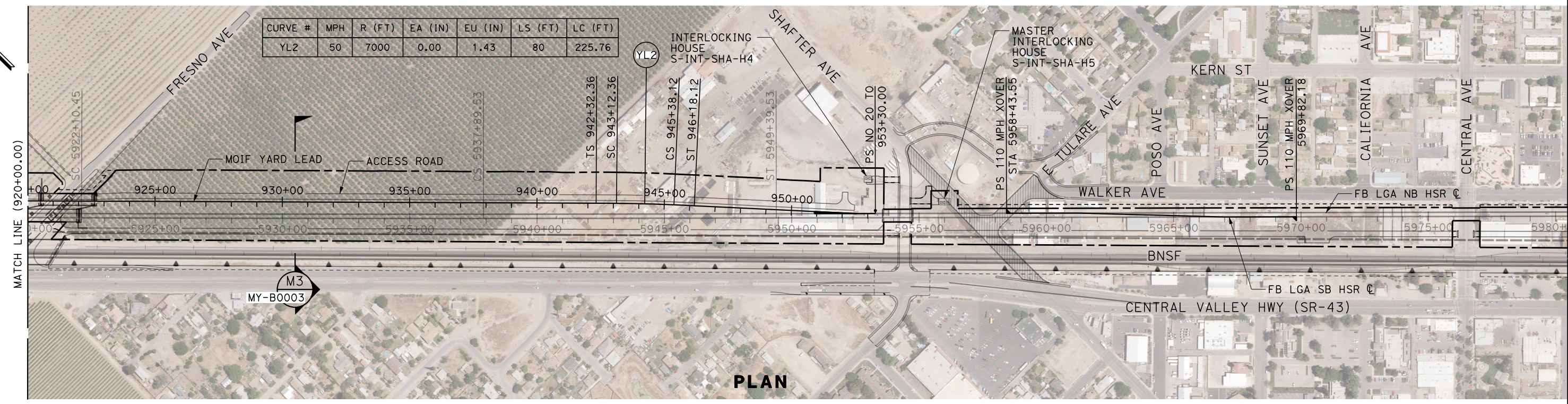
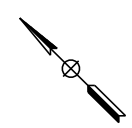
**RECORD SET
PEPD DESIGN
SUBMISSION**



**CALIFORNIA HIGH-SPEED RAIL PROJECT
FRESNO TO BAKERSFIELD**
LOCALLY GENERATED ALTERNATIVE
MAINTENANCE OF INFRASTRUCTURE FACILITY
MOIF STA 867+06 TO 920+00
PLAN AND PROFILE

CONTRACT NO.
HSR13-44
DRAWING NO.
MY-D1001
SCALE
AS SHOWN
SHEET NO.

TYLIN\jtrejo 10/26/2016 10:09:47 PM \$PENTBL.S\$ \$PLTDRVS\$ Projects\701206.N_BFSS\00_CADD\Sheet Files\Maintenance Sheets\BFSSA-MY-D1002_SHA.dgn



REV	DATE	BY	CHK	APP	DESCRIPTION

DESIGNED BY
J. TREJO
DRAWN BY
J. TREJO
CHECKED BY
E. WINTERS
IN CHARGE
P. PIENTON
DATE
10/28/2016

**RECORD SET
PEPD DESIGN
SUBMISSION**



**CALIFORNIA HIGH-SPEED RAIL PROJECT
FRESNO TO BAKERSFIELD**
LOCALLY GENERATED ALTERNATIVE
MAINTENANCE OF INFRASTRUCTURE FACILITY
YL STA 920+00 TO 953+30
PLAN AND PROFILE

CONTRACT NO.
HSR13-44
DRAWING NO.
MY-D1002
SCALE
AS SHOWN
SHEET NO.

