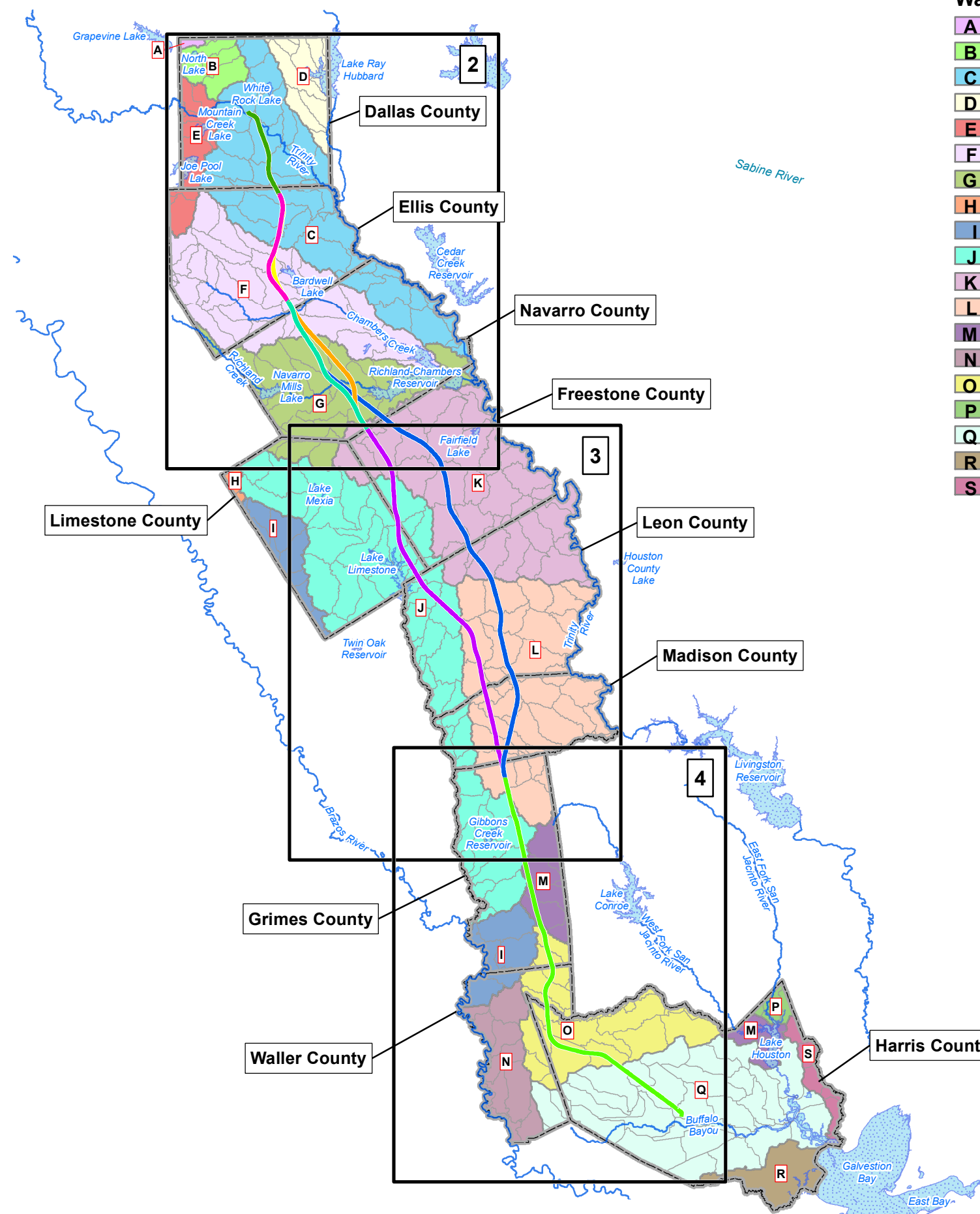


**Dallas to Houston High-Speed Rail
Draft Environmental Impact Statement**

**Appendix D:
Surface Water Resources**

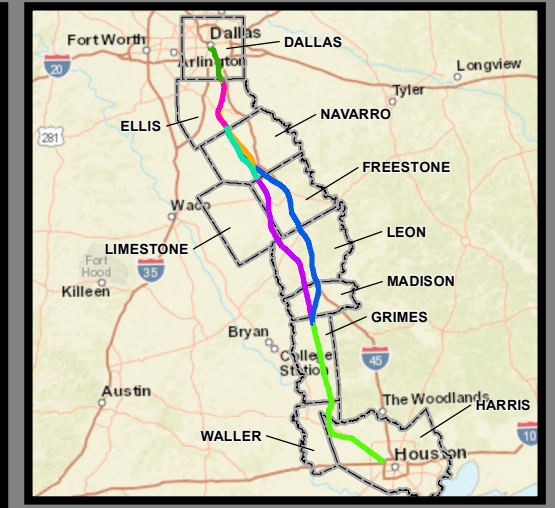


**Federal Railroad
Administration**



Watersheds (HUC 8)

- A** Denton
- B** Elm Fork Trinity
- C** Upper Trinity
- D** East Fork Trinity
- E** Lower West Fork Trinity
- F** Chambers
- G** Richland
- H** Middle Brazos-Lake Whitney
- I** Lower Brazos-Little Brazos
- J** Navasota
- K** Lower Trinity-Tehuacana
- L** Lower Trinity-Kickapoo
- M** West Fork San Jacinto
- N** Lower Brazos
- O** Spring
- P** East Fork San Jacinto
- Q** Buffalo-San Jacinto
- R** West Galveston Bay
- S** North Galveston Bay



**Dallas to Houston
High-Speed Rail Project
Surface Water Resources**

Sheet 1 of 4

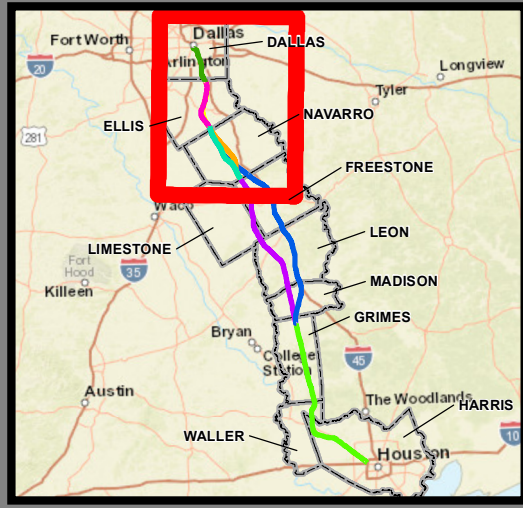
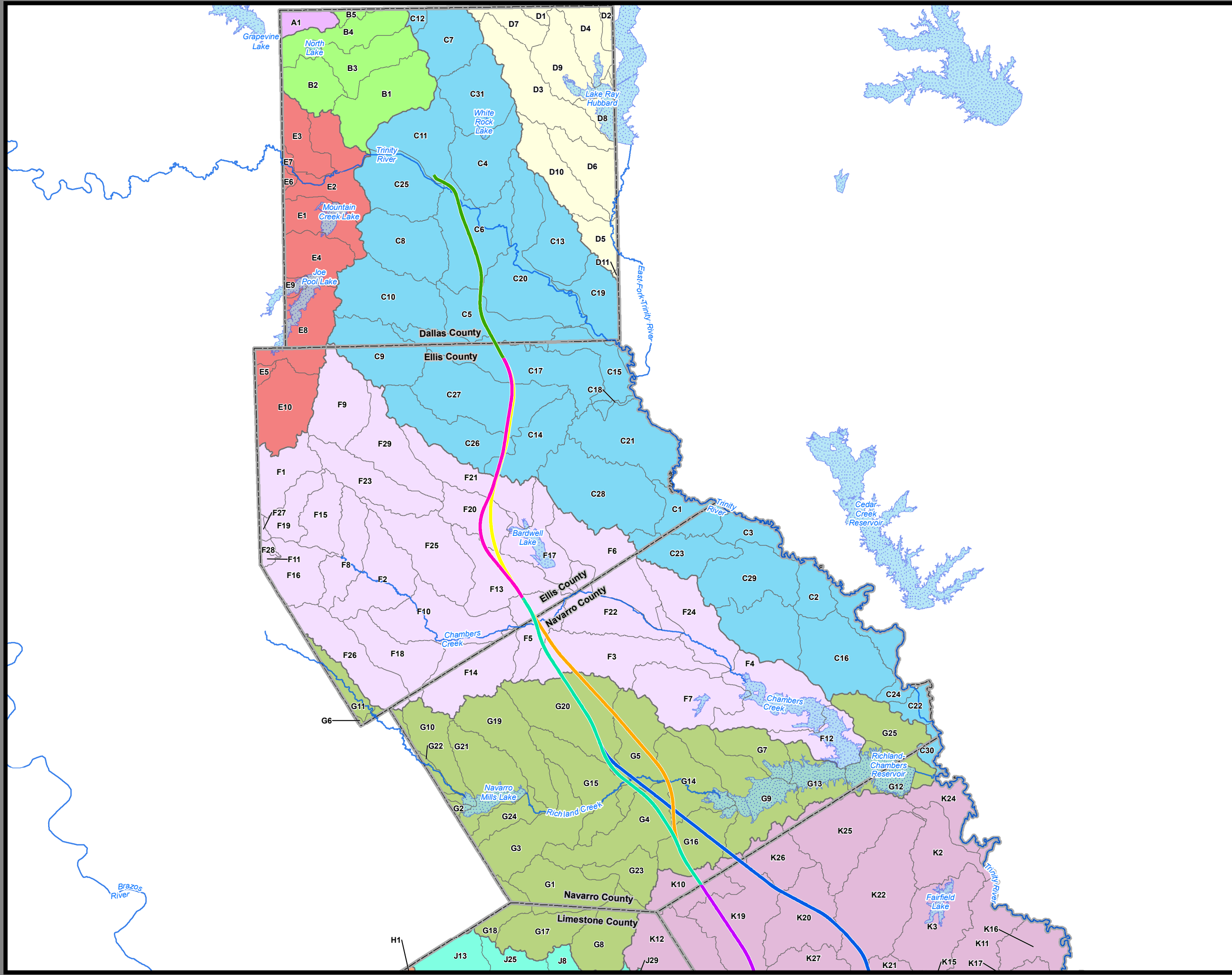
Legend

- Map Index
- Alternative Segments**
- Segment 1
- Segment 2A
- Segment 2B
- Segment 3A
- Segment 3B
- Segment 3C
- Segment 4
- Segment 5
- Subwatershed (HUC 12) Boundary
- River/Stream
- County Boundary
- Waterbody

Data Sources: TWDB, TCEQ, USGS

1 inch = 25 miles

0 12.5 25 Miles



**Dallas to Houston
High-Speed Rail Project
Surface Water Resources**

Sheet 2 of 4

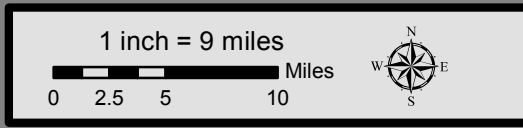
Legend

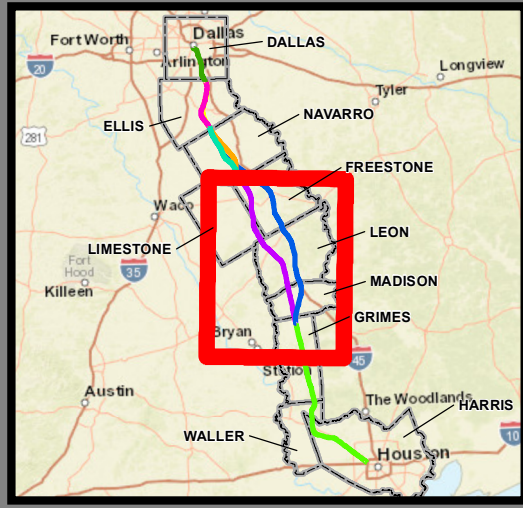
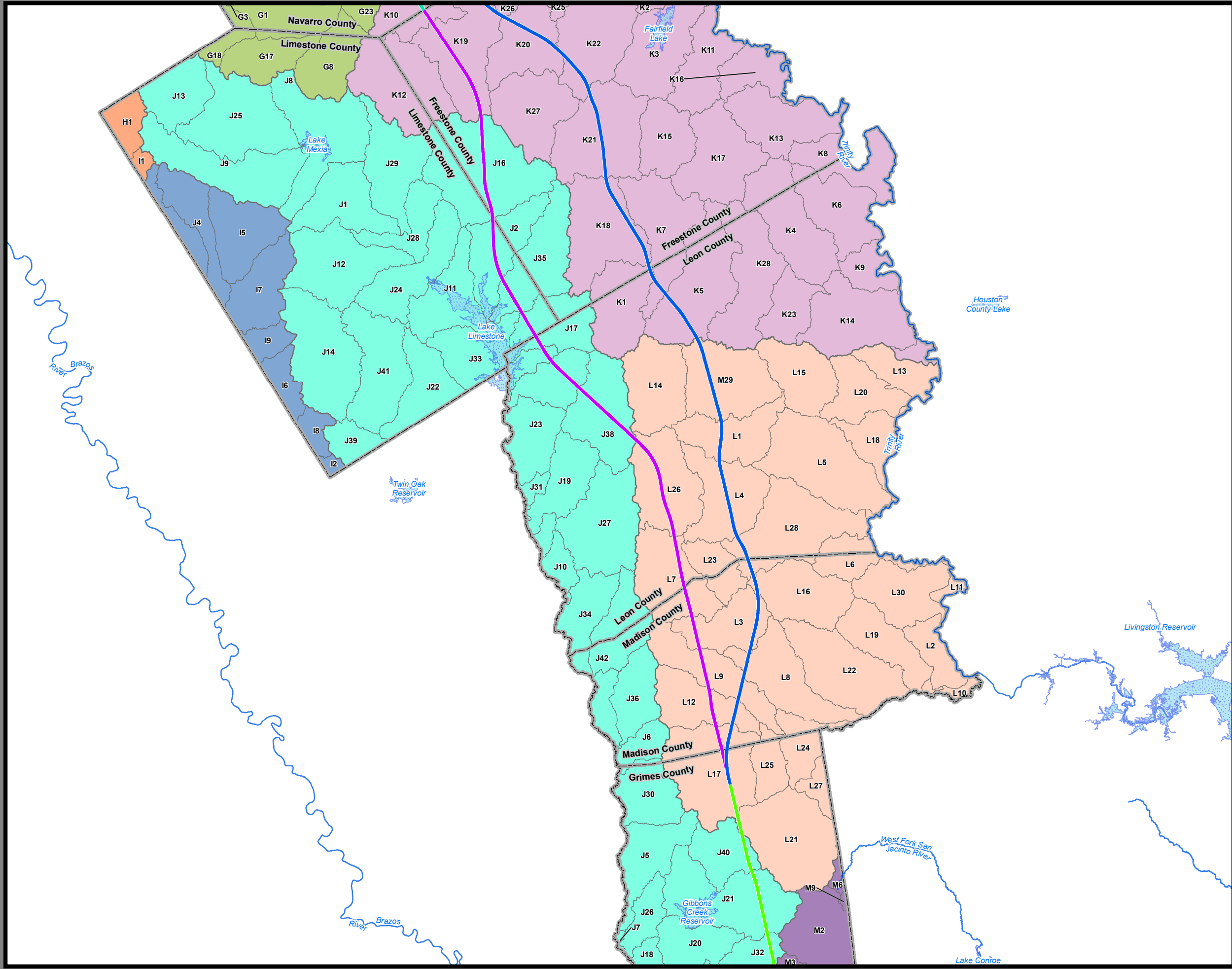
Alternative Segments

- Segment 1
- Segment 2A
- Segment 2B
- Segment 3A
- Segment 3B
- Segment 3C
- Segment 4
- Segment 5

- Subwatershed (HUC 12) Boundary
- River/Stream
- Waterbody
- County Boundary

Data Sources: TWDB, TCEQ, USGS





**Dallas to Houston
High-Speed Rail Project
Surface Water Resources**

Sheet 3 of 4

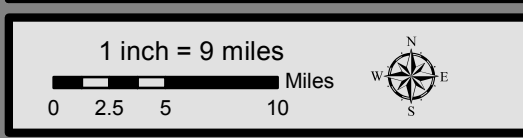
Legend

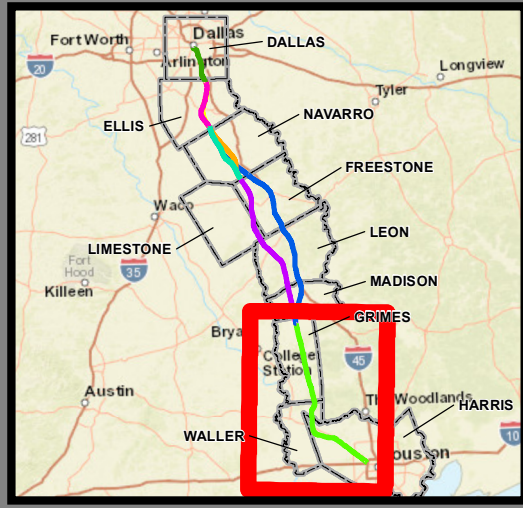
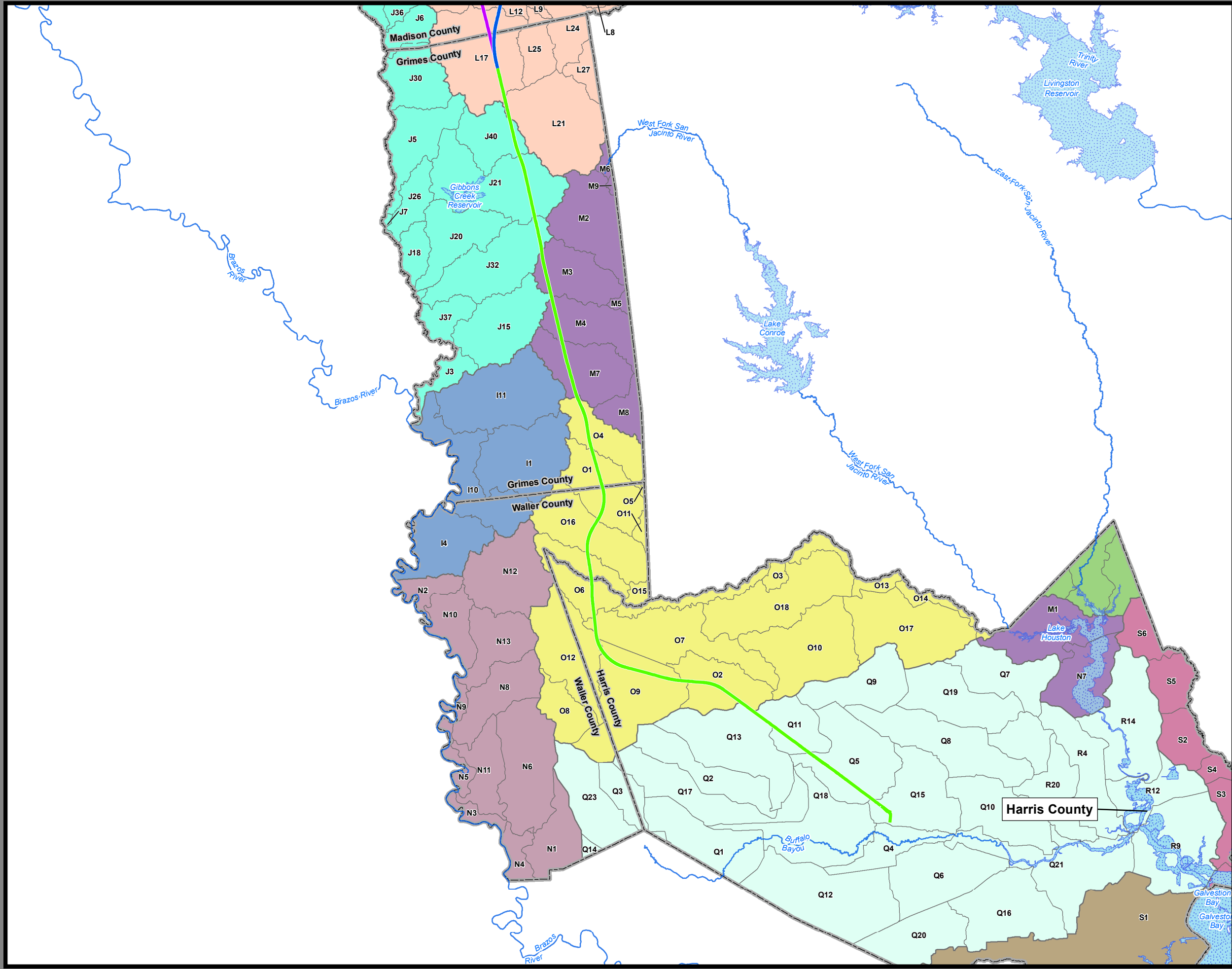
Alternative Segments

- Segment 1
- Segment 2A
- Segment 2B
- Segment 3A
- Segment 3B
- Segment 3C
- Segment 4
- Segment 5

- Subwatershed (HUC 12) Boundary
- River/Stream
- Waterbody
- County Boundary

Data Sources: TWDB, TCEQ, USGS





**Dallas to Houston
High-Speed Rail Project
Surface Water Resources**

Sheet 4 of 4

Legend

Alternative Segments

- Segment 1
- Segment 2A
- Segment 2B
- Segment 3A
- Segment 3B
- Segment 3C
- Segment 4
- Segment 5

- Subwatershed (HUC 12) Boundary
- River/Stream
- Waterbody
- County Boundary

Data Sources: TWDB, TCEQ, USGS

