

APPENDIX 3.19-A

Planned and Potential Projects and Plans

Contents

Tables

- 3.19A-1 City of Merced Planned and Potential Projects and Plans
- 3.19A-2 Merced County Planned and Potential Projects and Plans
- 3.19A-3 Madera County Planned and Potential Projects and Plans
- 3.19A-4 City of Chowchilla Planned and Potential Projects and Plans
- 3.19A-5 City of Madera Planned and Potential Projects and Plans
- 3.19A-6 City of Fresno Planned and Potential Projects and Plans
- 3.19A-7 BNSF Planned and Potential Projects
- 3.19A-8 Bureau of Reclamation Planned Project

Figures

- 3.19A-1 Planned and Potential Projects and Plans – Merced Vicinity
- 3.19A-2 Planned and Potential Projects and Plans – Merced to Fresno Overall Project Area
- 3.19A-3 Planned and Potential Projects and Plans – Chowchilla Vicinity
- 3.19A-4 Planned and Potential Projects and Plans – Madera Vicinity
- 3.19A-5 Planned and Potential Projects and Plans – Fresno Vicinity
- 3.19A-6 Planned and Potential Projects – BNSF

Table 3.19A-1
City of Merced Planned and Potential Projects and Plans

Project (document type)	Planned Projects				
	Merced General Plan	Merced Wastewater Treatment Plant (EIR)	South Merced Specific Plan (Programmatic EIR)	Wal-Mart Distribution Center (EIR)	Mercy Medical Center (EIR)
Figure and Site	NA	Figure A-1, Site 1	Figure A-1, Site 2	Figure A-1, Site 3	Figure A-1, Site 4
Status/Timing ^a	Final EIR adopted 2011 and plan adopted on January 3, 2012	Completed	No substantial development	EIR approved, litigation in process, construction anticipated 2012-2013	Opened May 2010
Description	Update not available at this time – planning manager requested use of adopted plan	Plant expansion to 12 mgd. Upgrade to 20 mgd anticipated but no timeline	2,052 acres bounded by Childs Ave, SR 99 Mission Ave/Dickenson Ferry Road, and West Ave and Merced Airport	1.1 million sf to store and distribute nongrocery goods, no retail commercial included, 24 hours/day, 1,200 employees	8-story hospital, 607,000-sf and 200,000-sf medical offices, 17,000-sf power plant, help pad, surface parking, and parking garage
Potential Significant Impacts after Mitigation					
Agriculture		Yes		Yes	Yes
Air Quality	Yes		Yes	Yes	Yes
Economics					
Land Use					
Fisheries					
Geology and Soils					
Hazardous Materials					
Historic and Arch					
Noise and Vibration				Yes	Yes
Parklands					

Project (document type)	Planned Projects				
	Merced General Plan	Merced Wastewater Treatment Plant (EIR)	South Merced Specific Plan (Programmatic EIR)	Wal-Mart Distribution Center (EIR)	Mercy Medical Center (EIR)
Public Services/Safety					
Social, Community, Neighborhood					Yes
Transportation	Yes		Yes		
Visual				Yes	Yes
Water Resources					
Wetlands					Construction impacts
Wildlife					Cumulative impact

Table 3.19A-1 (continued)
City of Merced Planned and Potential Projects and Plans

Project (document type)	Planned Projects			
	Bellevue Ranch (EIR)	NE Yosemite Specific Plan (EIR)	Campus North Specific Plan (EIR)	Water Wells 18 and 19
Figure and Site	Figure A-1, Site 5	Figure A-1, Site 6	NA	Figure A-1, Sites 7 and 8
Status/Timing ^a	Partially built	Partially developed	Built out	New groundwater wells, no impact/CEQA information
Description	6,000 to 7,000 single-family and multifamily dwelling units, 89 acres commercial, 23 acres office, and 188 acres open space, schools, fire station	Single-family and multifamily (approximately 2,500 units), 4 acres commercial, cancer center office	Single-family residential, offices, senior healthcare campus	
Potential Significant Impacts after Mitigation				
Agriculture	Yes			
Air Quality	Yes			
Economics				
Land Use				
Fisheries				
Geology and Soils				
Hazardous Materials				
Historic and Arch				
Noise and Vibration				
Parklands				
Public Services/Safety				
Social, Community, Neighborhood				
Transportation				

Project (document type)	Planned Projects			
	Bellevue Ranch (EIR)	NE Yosemite Specific Plan (EIR)	Campus North Specific Plan (EIR)	Water Wells 18 and 19
Visual				
Water Resources				
Wetlands				
Wildlife		Yes		
Notes:	mgd = million gallons per day NA = not applicable sf = square feet EIR = Environmental Impact Report			
	No entry in a cell of the table = no impact. Yes = There is a potential impact. CEQA = California Environmental Quality Act			
	^a Kim Espinoza, City of Merced Planning Department, City of Merced, California. Personal Communication with Colleen Roberts, CH2M HILL, December 1, 2009, and Lauren Swift, CH2M HILL, January 26, 2010.			

Table 3.19A-2
 Merced County Planned and Potential Projects and Plans

Project (document type)	Planned Projects				
	Merced County General Plan Update (EIR)	Merced County Enterprise Zone (EIR)	Santa Fe Aggregates Snelling Tailings Project (EIR)	Joe Lourenco Dairy Expansion #2 (EIR)	Red Rock Dairy (EIR)
Figure and Site	NA	NA	Off the map – NE Merced County	Figure A-2, Site 1	Figure A-2, Site 2
Status/Timing	EIR expected in 1st quarter 2012	Completed EIR	Approved	Approved	Approved
Description		Replace expired EZ program, includes part of Atwater, Livingston, Merced, and Merced County	Surface mine and reclamation plan, processing 8 million tons dredger tailings from 624-acre site	Increase in 1,700 animals	Construct dairy with 5,636 animals in 2 phases
Potential Significant Impacts after Mitigation					
Agriculture					
Air Quality		Yes	Yes	Yes	Yes
Economics					
Land Use			Yes	Yes	
Fisheries					
Geology and Soils					
Hazardous Materials					
Historic and Arch					
Noise and Vibration			Yes		
Parklands					

Project (document type)	Planned Projects				
	Merced County General Plan Update (EIR)	Merced County Enterprise Zone (EIR)	Santa Fe Aggregates Snelling Tailings Project (EIR)	Joe Lourenco Dairy Expansion #2 (EIR)	Red Rock Dairy (EIR)
Public Services/Safety					
Social, Community, Neighborhood					
Transportation					
Visual					
Water Resources				Yes	Yes
Wetlands					
Wildlife				Yes	Yes

Table 3.19A-2 (continued)
 Merced County Planned and Potential Projects and Plans

Planned Projects					
Project (document type)	Jaxon Enterprises (EIR)	Yosemite Ranch Estates (Le Grand) (EIR)	Los Banos Bypass (EIR)	Castle Special Planning Zone (FEIR)	George Reed Inc Merced Quarry Project EIR (EIR expected spring 2011)
Figure and Site	Figure A-2, Site 3	Figure A-2, Site 4	See transportation map	Figure A-2, Site 5	Off map (Snelling)
Status/Timing	Approved	On hold in Final EIR stage, completion in question due to applicant	Approved, waiting on funding	Approved	EIR expected in 1st quarter 2012
Description	Excavate and process 6 million tons of aggregate by expanding existing mine acreage and depth	287 new single-family homes, average 7,500-sf lots	Construct a four-lane freeway bypass on a new alignment for SR 152 around the City of Los Banos	Land uses and goals outlined in the redevelopment plan include office and commercial development; new jobs promotion; air cargo, passenger, transient, flight training, and aircraft maintenance operations; blight elimination; underused areas redesign; investment stimulation	103-acre mine and asphalt concrete and Portland cement batch plant
Potential Significant Impacts after Mitigation					
Agriculture	Yes	Yes	Yes		Yes
Air Quality	Yes			Yes	Yes
Economics					
Land Use		Yes		Yes	
Fisheries					

Project (document type)	Planned Projects				
	Jaxon Enterprises (EIR)	Yosemite Ranch Estates (Le Grand) (EIR)	Los Banos Bypass (EIR)	Castle Special Planning Zone (FEIR)	George Reed Inc Merced Quarry Project EIR (EIR expected spring 2011)
Geology and Soils					
Hazardous Materials			Yes		Yes
Historic and Arch					
Noise and Vibration		Yes	Yes	Yes	Yes
Parklands					
Public Services/Safety					
Social, Community, Neighborhood					
Transportation				Yes	Yes
Visual		Yes			Yes
Water Resources	Yes	Yes		Yes	Yes
Wetlands			Yes		
Wildlife	Yes		Yes		Yes

Table 3.19A-2 (continued)
Merced County Planned and Potential Projects and Plans

Project (document type)	Planned Projects				
	Planada Community Plan (EIR)	Planada 15/Self Help (subdivision, zoning, and plan amendment)	Planada Wastewater Treatment Plant Improvement Project	New High School- Merced Union High School District	Le Grand Community Plan
Figure and Site	NA	Figure A-2, Site 18		NA	NA
Status/Timing	EIR to be completed 2012	Waiting on Planada Community Plan EIR to be completed this year, decision in 2012	Draft EIR released for public review September 2011	Property purchased, amendment to General Plan needed	EIR to be completed in 2012
Description		15.6 acres, 72 lot residential subdivision with 4 public use lots; zoning change from light industrial and R-1 to R-1-5000	Upgrade and expansion of Planada WWTP to comply with Central Valley Water Board order to meet applicable treated effluent disposal requirements	New high school at southwest corner of Gerard Avenue and Tyler Road	
Potential Significant Impacts after Mitigation					
Agriculture			Yes		
Air Quality					
Economics					
Land Use					
Fisheries					
Geology and Soils					
Hazardous Materials					
Historic and Arch					
Noise and Vibration					
Parklands					
Public Services/Safety					

Project (document type)	Planned Projects			
	Planada Community Plan (EIR)	Planada 15/Self Help (subdivision, zoning, and plan amendment)	Planada Wastewater Treatment Plant Improvement Project	New High School- Merced Union High School District
Social, Community, Neighborhood				Le Grand Community Plan
Transportation				
Visual				
Water Resources			Yes	
Wetlands				
Wildlife				
Notes: No entry in a cell of the table = no impact. Yes = There is a potential impact. EIR = Environmental Impact Report FEIR = Final Environmental Impact Report NA = not applicable NOP = Notice of Preparation sf = square feet				

Table 3.19A-3
 Madera County Planned and Potential Projects and Plans

Planned Projects					
Project (document type)	Madera County General Plan Update	Tesoro Viejo Specific Plan (EIR)	Madera Ranch Quarry (EIR)	Gunner Ranch West Specific Plan (EIR)	Madera County Dairy Standards (Programmatic EIR)
Figure and Site	NA	Figure A-2, Site 6	Figure A-2, Site 7	Figure A-2, Site 8	NA
Status/Timing ^a	2013	Adopted by Board of Supervisors 12/2008	Approved	Draft EIR issued May 2011.	Final EIR published
Description		Mixed-use development, 5,190 dwelling units, 3 million sf commercial, institutional, and light industrial, parks/open space, public facilities, and roads	900,000 ton hard rock quarry, aggregate processing, hot mix asphalt plant	2,840 dwelling units, 3.9 million sf commercial and community facilities	Provides guidance to Madera County and dairy industry for the development, expansion, and operation of milk cow dairies
Potential Significant Impacts after Mitigation					
Agriculture		Yes		Yes	
Air Quality		Yes	Yes	Yes	Yes
Economics					
Land Use				Yes	
Fisheries					
Geology and Soils					
Hazardous Materials					
Historic and Arch		Yes			Yes
Noise and Vibration			Yes	Yes	
Parklands					

Project (document type)	Planned Projects				
	Madera County General Plan Update	Tesoro Viejo Specific Plan (EIR)	Madera Ranch Quarry (EIR)	Gunner Ranch West Specific Plan (EIR)	Madera County Dairy Standards (Programmatic EIR)
Public Services/Safety					
Social, Community, Neighborhood					
Transportation	Yes			Yes	Yes
Visual					
Water Resources					
Wetlands					Yes
Wildlife					Yes

Table 3.19A-3 (continued)
Madera County Planned and Potential Projects and Plans

Planned Projects					
Project (document type)	Gateway Village (EIR)	North Shore at Millerton Lake (EIR)	Sierra Meadows (EIR)	Fairmead Specific Plan (IS and mitigated negative declaration)	Raymond Area Plan (IS and mitigated negative declaration)
Figure and Site	Figure A-2, Site 9	Figure A-2, Site 10	Figure A-2, Site 11	Figure A-3, Site 6	Figure A-2, Site 12
Status/Timing ^a	Approved by Board of Supervisors in September 2009	Approved	Adopted	In process, early 2011	Approved
Description	Master planned community, 5,836 low-density residential units, 132 acres of commercial and mixed use, 19 acres of neighborhood commercial	2,966 residential units, 1,500,000 sf commercial/mixed use, elementary school	315 single-family homes, onsite water reservoir, and water and wastewater treatment plants	Refine county general plan. Increase in 1,700 dwelling units, decrease in agricultural acreage, increase in commercial acreage	Refine county general plan; increase in units by approximately 130, decrease of 5,600 acres for agriculture
Potential Significant Impacts after Mitigation					
Agriculture	Yes	Yes			
Air Quality		Yes	Yes		
Economics					
Land Use					
Fisheries					
Geology and Soils		Yes			
Hazardous Materials					
Historic and Arch					
Noise and	Yes				

Project (document type)	Planned Projects					
	Gateway Village (EIR)	North Shore at Millerton Lake (EIR)	Sierra Meadows (EIR)	Fairmead Specific Plan (IS and mitigated negative declaration)	Raymond Area Plan (IS and mitigated negative declaration)	
Vibration						
Parklands		Yes				
Public Services/Safety	Yes					
Social, Community, Neighborhood						
Transportation	Yes					
Visual		Yes	Yes			
Water Resources		Yes				
Wetlands						
Wildlife	Yes	Yes				

Table 3.19A-3 (continued)
 Madera County Planned and Potential Projects and Plans

Project (document type)	Planned Projects				
	SE Madera County Area Plan (include Ave 12)	Madera Fossil Museum	Liberty Groves Specific Plan (EIR)	Hildreth Creek Quarry (EIR)	Austin Quarry (EIR)
Figure and Site	Figure A-2, Site 13	Figure A-3, Site 5	Figure A-2, Site 14	Figure A-2, Site 15	Figure A-2, Site 16
Status/Timing ^a	In process, complete 2010	Complete	EIR in process, complete 2011/2012	EIR in process, complete 2011	EIR in process, complete late 2011
Description	Environmental review under way, no documents to review	Portable buildings, attraction of children and visitors to view fossils, covered by tent	Master planned community with 7,500 residential units and 4,456,188 sf of commercial on 1,433 acres	3,000,000-ton hard rock quarry, and processing, hot mix asphalt and concrete facilities, construction material recycling plant	2,500,000-ton hard rock quarry, asphalt production, asphalt and concrete recycling
Potential Significant Impacts after Mitigation					
Agriculture			Yes	Yes	Yes
Air Quality					
Economics					
Land Use					
Fisheries					
Geology and Soils					
Hazardous Materials					
Historic and Arch					
Noise and Vibration					
Parklands					
Public					

Project (document type)	Planned Projects				
	SE Madera County Area Plan (include Ave 12)	Madera Fossil Museum	Liberty Groves Specific Plan (EIR)	Hildreth Creek Quarry (EIR)	Austin Quarry (EIR)
Services/Safety					
Social, Community, Neighborhood					
Transportation					
Visual					
Water Resources					
Wetlands					
Wildlife					

Table 3.19A-3 (continued)
Madera County Planned and Potential Projects and Plans

Project (document type)	Planned Projects				
	Tra Vigne Specific Plan (EIR)	San Joaquin River Ranch Specific Plan (application)	Tatham Specific Plan (application)	Morgan Specific Plan (application)	Shaw Specific Plan (application)
Figure and Site	Figure A-2, Site 18	Figure A-2, Site 19	Figure A-2, Site 20	Figure A-2, Site 21	Figure A-2, Site 22
Status/Timing ^a	Draft EIR issued April 2011	EIR in process, 2012	EIR in process, 2012	EIR in process, 2012	EIR in process, 2012
Description	432 residential lots on 162 acres	21,954 residential units (varying density), 100 acres commercial, 143 acres light industrial, 80 acres institutional, and 80 acres open space	9,040 residential units (varying density), 100 acres mixed use, 87 acres commercial, and 123 acres open space	700 residential units (varying density), 25 acres commercial, and 18 acres open space	996 residential units (varying density), 30 acres commercial
Potential Significant Impacts after Mitigation					
Agriculture	Yes				
Air Quality					
Economics					
Land Use					
Fisheries					
Geology and Soils					
Hazardous Materials					
Historic and Arch					
Noise and Vibration					
Parklands					
Public					

Project (document type)	Planned Projects				
	Tra Vigne Specific Plan (EIR)	San Joaquin River Ranch Specific Plan (application)	Tatham Specific Plan (application)	Morgan Specific Plan (application)	Shaw Specific Plan (application)
Services/Safety					
Social, Community, Neighborhood					
Transportation					
Visual	Yes				
Water Resources					
Wetlands					
Wildlife					
<p>Notes:</p> <p>This agency did not provide updated information on the status of projects for the Final EIR/EIS</p> <p>No entry in a cell of the table = no impact.</p> <p>Yes = There is a potential impact.</p> <p>EIR = Environmental Impact Report</p> <p>IS = Initial Study</p> <p>NA = not applicable</p> <p>sf = square feet</p>					
<p>^a Matthew Treber, Madera County Planning Department, Madera, California. Personal Communication with Lauren Swift, CH2M HILL, January 26, 2010.</p>					

Table 3.19A-4
City of Chowchilla Planned and Potential Projects and Plans

		Planned Projects			
Project (document type)	Chowchilla General Plan Update (EIR)	Sonoma Street PES Project (negative declaration)	Road 16 Pipeline Project (negative declaration)	Washington Road and Robertson Blvd Intersection (mitigated negative declaration)	Downtown Master Plan
Figure and Site	NA	Figure A-3, Site 1	Figure A-3, Site 2	Figure A-3, Site 3	Figure A-3, Site 7
Status/Timing ^a	Final EIR published April 2011, plan adopted in May 2011	Complete	Awaiting funding	Property acquisition	On hold
Description		Resurface Sonoma Street, curb improvements, new gutters NO PERMANENT IMPACTS (impacts listed below are temporary)	Installation of 920 feet of pipe for storm drainage to existing basin		
Potential Significant Impacts after Mitigation					
Agriculture	Yes				
Air Quality	Yes	Yes	Yes		
Economics					
Land Use	Yes				
Fisheries	Yes				
Geology and Soils					
Hazardous Materials					
Historic and Arch					
Noise and Vibration		Yes	Yes		
Parklands					

Project (document type)	Planned Projects				
	Chowchilla General Plan Update (EIR)	Sonoma Street PES Project (negative declaration)	Road 16 Pipeline Project (negative declaration)	Washington Road and Robertson Blvd Intersection (mitigated negative declaration)	Downtown Master Plan
Public Services/Safety	Yes				
Social, Community, Neighborhood					
Transportation					
Visual	Yes				
Water Resources	Yes				
Wetlands	Yes				
Wildlife	Yes				

Table 3.19A-4 (continued)
 City of Chowchilla Planned and Potential Projects and Plans

Project (document type)		Planned Projects	
Figure and Site	Water Well and Pipeline to Wastewater Treatment Plant	Figure A-3, Site 8	Rancho Calera (part of general plan update EIR)
Figure and Site	Figure A-3, Site 8	Figure A-3, Site 9	
Status/Timing ^a	No environmental data available	Final EIR published April 2011, adopted May 2011	
Description		2,042 homes, 495,000 sf of commercial on 576 acres in northeast Chowchilla	
Potential Significant Impacts after Mitigation			
Agriculture			Yes
Air Quality			Yes
Economics			
Land Use			Yes
Fisheries			
Geology and Soils			
Hazardous Materials			
Historic and Arch			
Noise and Vibration			
Parklands			
Public Services/Safety			Yes
Social, Community, Neighborhood			
Transportation			
Visual			Yes

Project (document type)	Planned Projects	
	Water Well and Pipeline to Wastewater Treatment Plant	Rancho Calera (part of general plan update EIR)
Water Resources		Yes
Wetlands		
Wildlife		
Notes: This agency did not provide updated information on the status of projects for the Final EIR/EIS No entry in a cell of the table = no impact. Yes = There is a potential impact. EIR = Environmental Impact Report NA = not applicable sf = square feet ^a Liz Wiederhold, Community Development Manager, City of Chowchilla, California. Personal Communication with Jennifer Daigre, CH2M HILL, October 25, 2010.		

Table 3.19A-5 (continued)
City of Madera Planned and Potential Projects and Plans

Project (document type)	Planned Projects		
	Madera General Plan Update (EIR)	Town Center (EIR)	Southeast Madera Development (EIR)
Figure and Site	NA	Figure A-4, Site 1	Figure A-4, Site 3
Status/Timing	Final EIR completed	EIR complete, potential construction 2013	EIR complete
Description		Ave 17 and SR 99, 850,000-sf shopping center	Ave 13 and SR 99, 1,375 single-family residential units, 81,675 sf commercial on 336 acres
			EIR expected 1st quarter 2012
			191,000 sf retail at Schnoor Street and Fox Glove Way
Potential Significant Impacts after Mitigation			
Agriculture	Yes	Yes	Yes
Air Quality	Yes	Yes	Yes
Economics			
Land Use	Yes		
Fisheries			
Geology and Soils			
Hazardous Materials			
Historic and Arch			
Noise and Vibration	Yes		
Parklands			
Public Services/Safety			
Social, Community, Neighborhood			

Project (document type)	Planned Projects			
	Madera General Plan Update (EIR)	Town Center (EIR)	Southeast Madera Development (EIR)	Fox Glove Retail Center
Transportation	Yes	Yes		
Visual	Yes	Yes		
Water Resources	Yes	Yes	Yes	
Wetlands				
Wildlife	Yes			

Notes:
 No entry in a cell of the table = no impact.
 Yes = There is a potential impact.
 CO_{2e} = carbon dioxide equivalent
 EIR = Environmental Impact Report
 sf = square feet

Table 3.19A-6
City of Fresno Planned and Potential Projects and Plans

Project (document type)	Planned Projects					Aquarius Aquarium Institute
	Fresno General Plan 2025	Figarden Mixed-Use Building (EIR)	El Paseo (1S, EIR)	Westlake (1S, EIR)	Fulton Corridor Specific Plan	
Figure and Site		Figure A-5, Site 1	Figure A-5, Site 2	Figure A-5, Site 3	Figure A-5, Site 5	Figure A-5, Site
Status/Timing	February 2002	EIR expected 1st quarter 2012	Conditional use permit issued for Phase 1 of 5.	EIR expected 1st quarter 2012	Draft plan issued in 2011. Draft EIR expected in 2012.	Project is conducting fundraising
Description		Six-story, 305 residential unit development on approximately 4 acres	238-acre project at the northwest gateway of the city; final development to include retail, office, hospitality, and entertainment uses. Phase 1 will include 906, 000 sf of retail	460-acre project with 2,600 dwelling units and 295,000 sf of commercial		10-acre site, a former sand and gravel mine and asphalt plant
Potential Significant Impacts after Mitigation						
Agriculture	Yes		Yes	Yes		
Air Quality	Yes		Yes	Yes		
Economics						
Land Use			Yes	Yes		
Fisheries						
Geology and Soils			Yes			
Hazardous Materials			Yes			
Historic and Arch						
Noise and Vibration	Yes		Yes	Yes		

Project (document type)	Planned Projects					
	Fresno General Plan 2025	Figarden Mixed-Use Building (EIR)	El Paseo (IS, EIR)	Westlake (IS, EIR)	Fulton Corridor Specific Plan	Aquarius Aquarium Institute
Parklands				Yes		
Public Services/Safety		Yes		Yes		
Social, Community, Neighborhood						
Transportation	Yes		Yes	Yes		
Visual			Yes	Yes		
Water Resources			Yes	Yes		
Wetlands				Yes		
Wildlife				Yes		

Table 3.19A-6 (continued)
 City of Fresno Planned and Potential Projects and Plans

Project (document type)		Planned Projects Fresno General Plan 2025		Downtown Neighborhoods Community Plan
Figure and Site				
Status/Timing		FEIS was completed and released to the public in June 2011		Draft plan issued 2011. Draft EIR expected in 2012.
Description		21 acre expansion for the Chaffee Zoo, expand Storyland and Playland in Roeding Park by 2 acres		Plan will guide regeneration of Downtown Fresno and surrounding neighborhoods.
Potential Significant Impacts after Mitigation				
Agriculture				
Air Quality				
Economics				
Land Use				
Fisheries				
Geology and Soils				
Hazardous Materials				
Historic and Arch		Yes (cumulative cultural impacts)		
Noise and Vibration				
Parklands				
Public Services/Safety				
Social, Community, Neighborhood				
Transportation		Yes		
Visual				
Water Resources				
Wetlands				

Planned Projects	
Project (document type)	Fresno General Plan 2025 Downtown Neighborhoods Community Plan
<p>Wildlife</p> <p>Notes:</p> <p>No entry in a cell of the table = no impact</p> <p>Yes = There is a potential impact.</p> <p>EIR = Environmental Impact Report</p> <p>IS = Initial Study</p> <p>NOP = Notice of Preparation</p> <p>sf = square feet</p>	

Table 3.19A-7
BNSF Planned and Potential Projects

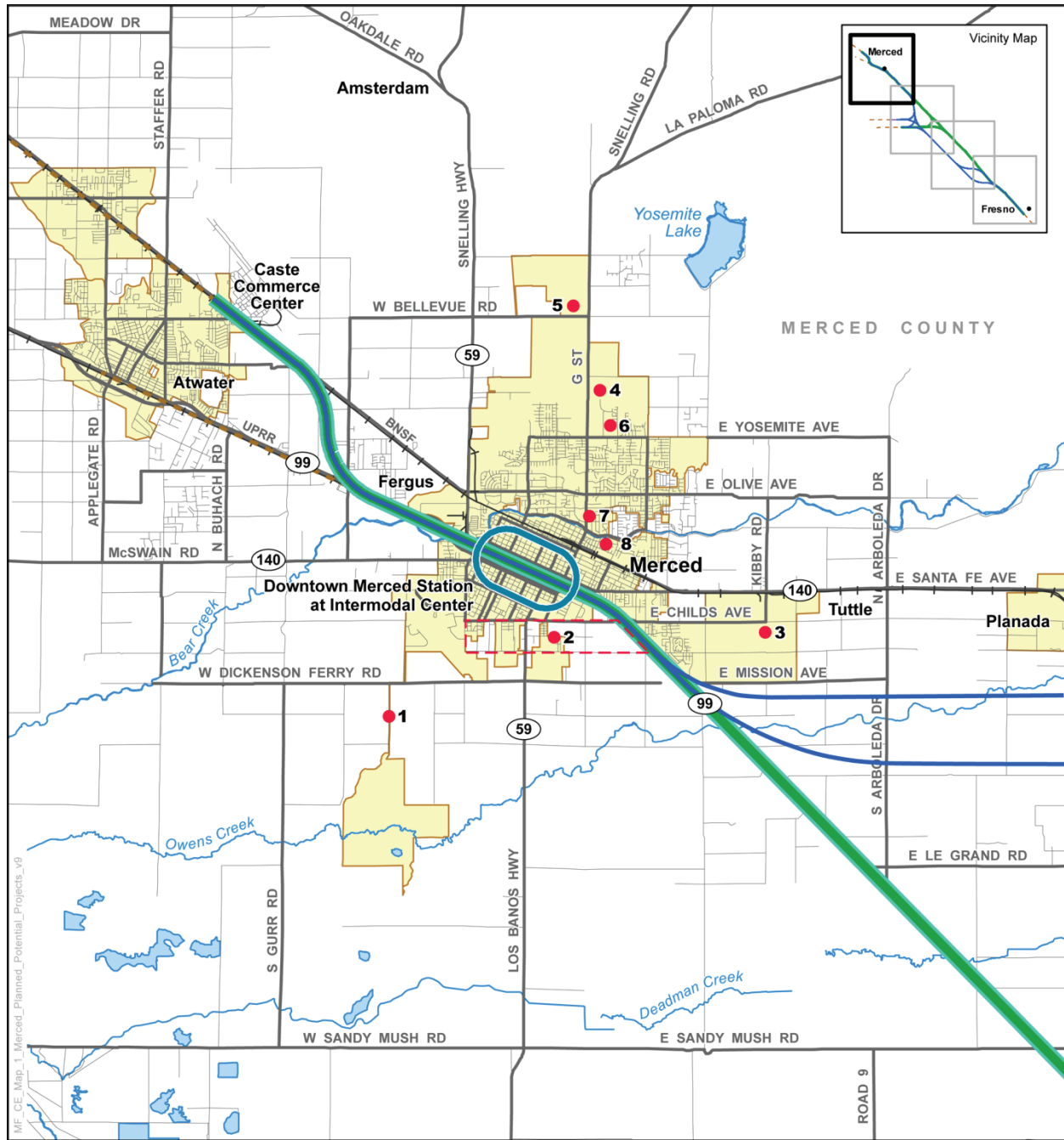
		Planned Projects ^a		
Project (document type)	Le Grand to Planada (FRA Class 4 ^a – Freight & Passenger)	Planada to Merced (FRA Class 4/5 ^a – Passenger)	Gregg Siding Extension (MP 1013.9-1018.1) to Madera (FRA Class 4/5 ^a – Passenger)	Gregg Siding Extension (MP 1008.9-1013.9) to Madera (FRA Class 4 ^a – Freight & Passenger)
Figure and Site	Figure B-6, Site 1	Figure B-6, Site 2	Figure B-6, Site 3	Figure B-6, Site 4
Status/Timing ^b	Agreed, funded, nearly constructed, or completed; 5- to 10-year schedule	25-year schedule	25-year schedule	Agreed, funded, nearly constructed or completed; 5- to 10-year schedule
Description	The first phase of the 17-mile extension of second main track from Merced east to Le Grand. This first phase extends two main tracks from west Le Grand (MP 1041.9) to west Planada (MP 1050.3).	A second main track between the west end of the extended siding at Gregg (MP 1013.9) and the east end foul at Madera (MP 1018.11), lapped with the east switch of the existing controlled siding at Madera, so that the siding remains, as at Shirley; two universals in between.	The second phase of the 17-mile extension of second main track from Merced east to Le Grand. This second phase extends two main tracks from west Planada (MP 1050.3) to Merced (MP 1056.36); four sets of crossovers.	An extension of the controlled siding at Gregg so that it becomes a second main track from MP 1008.9 to MP 1013.9, toward Madera.
Potential Significant Impacts after Mitigation^c				
Agriculture				
Air Quality				
Economics				
Land Use				
Fisheries				
Geology and Soils				
Hazardous Materials				
Historic and Arch				

Project (document type)	Planned Projects ^a		
	Le Grand to Planada (FRA Class 4 ^a – Freight & Passenger)	Planada to Merced (FRA Class 4/5 ^a – Passenger)	Gregg Siding Extension (MP 1013.9-1018.1) to Madera (FRA Class 4/5 ^a – Passenger)
Noise and Vibration			Gregg Siding Extension (MP 1008.9-1013.9) to Madera (FRA Class 4 ^a – Freight & Passenger)
Parklands			
Public Services/Safety			
Social, Community, Neighborhood			
Transportation			
Visual			
Water Resources			
Wetlands			
Wildlife			
Notes: No entry in a cell of the table = no impact			
^a Source: BNSF Interoffice Memoranda: Willard Keeney to Mitchell, Agnew, Depler, San Joaquin Valley RTC Simulations 2010, 1/30/2011.			
^b FRA Class 4 = 60 to 80 mph; FRA Class 5 = 80 to 90 mph.			
^c Projects are within existing right-of-way and adjacent to existing track.			

Table 3.19A-8
 Bureau of Reclamation Planned Project

Project (document type)	Planned Project
Figure and Site	
Status/Timing ^a	Draft Program EIR/EIS under public review
Description	Comprehensive long-term effort to restore flows to the San Joaquin River from Friant Dam to the confluence of Merced River and restore a self-sustaining Chinook salmon fishery in the river while reducing or avoiding adverse water supply impacts from Interim and Restoration flows.
Potential Significant Impacts after Mitigation	
Agriculture	
Air Quality	Yes
Economics	
Land Use	Yes
Fisheries	
Geology and Soils	Yes
Hazardous Materials	Yes
Historic and Arch	Yes – Cultural Impacts, Paleontological
Noise and Vibration	Yes
Parklands	
Public Services/Safety	Yes - utilities
Social, Community, Neighborhood	Yes – Recreation
Transportation	Yes
Visual	Yes

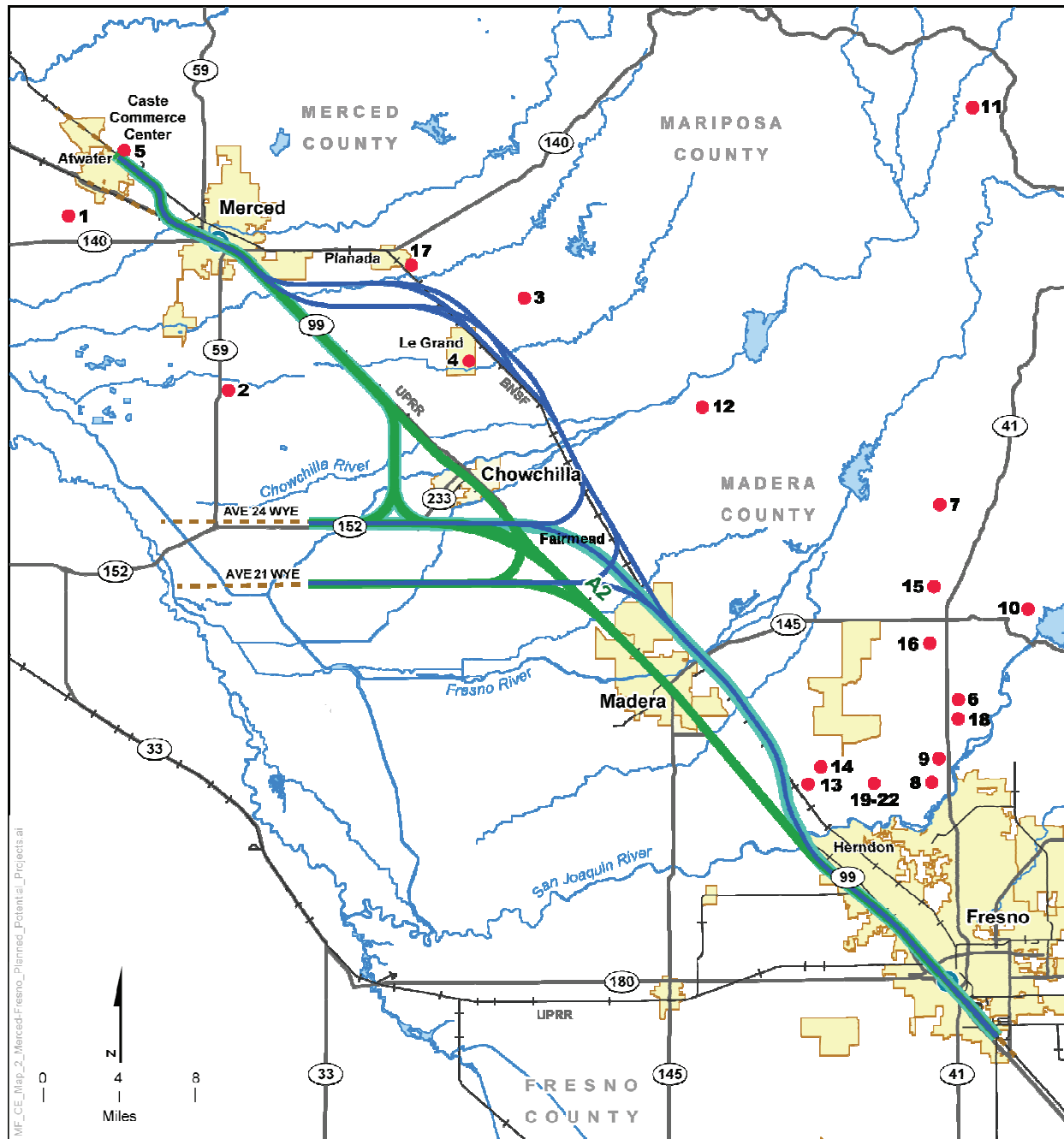
Project (document type)	Planned Project
Water Resources	San Joaquin River Restoration Program (Program EIR/EIS)
Wetlands	Yes – Hydrology, Groundwater
Wildlife	
Notes: No entry in a cell of the table = no impact	
^a Source: BNSF Interoffice Memoranda: Willard Keeney to Mitchell, Agnew, Depler, San Joaquin Valley RTC Simulations 2010 (1/30/2011).	



October 25, 2010

<ul style="list-style-type: none"> UPRR/SR 99/BNSF Hybrid Alternative UPRR/SR 99 Alternative BNSF Alternative Station Study Area City Limits 1 Planned or Potential Project (See List at Right) 	<ol style="list-style-type: none"> 1. Merced WWTP 2. South Merced Specific Plan 3. Walmart Distribution Center 4. Mercy Medical Center 5. Bellevue Ranch 6. NE Yosemite Specific Plan 7. Waterwell 18 8. Waterwell 19
--	---

Figure 3.19A-1
 Planned and Potential Projects and Plans – Merced Vicinity

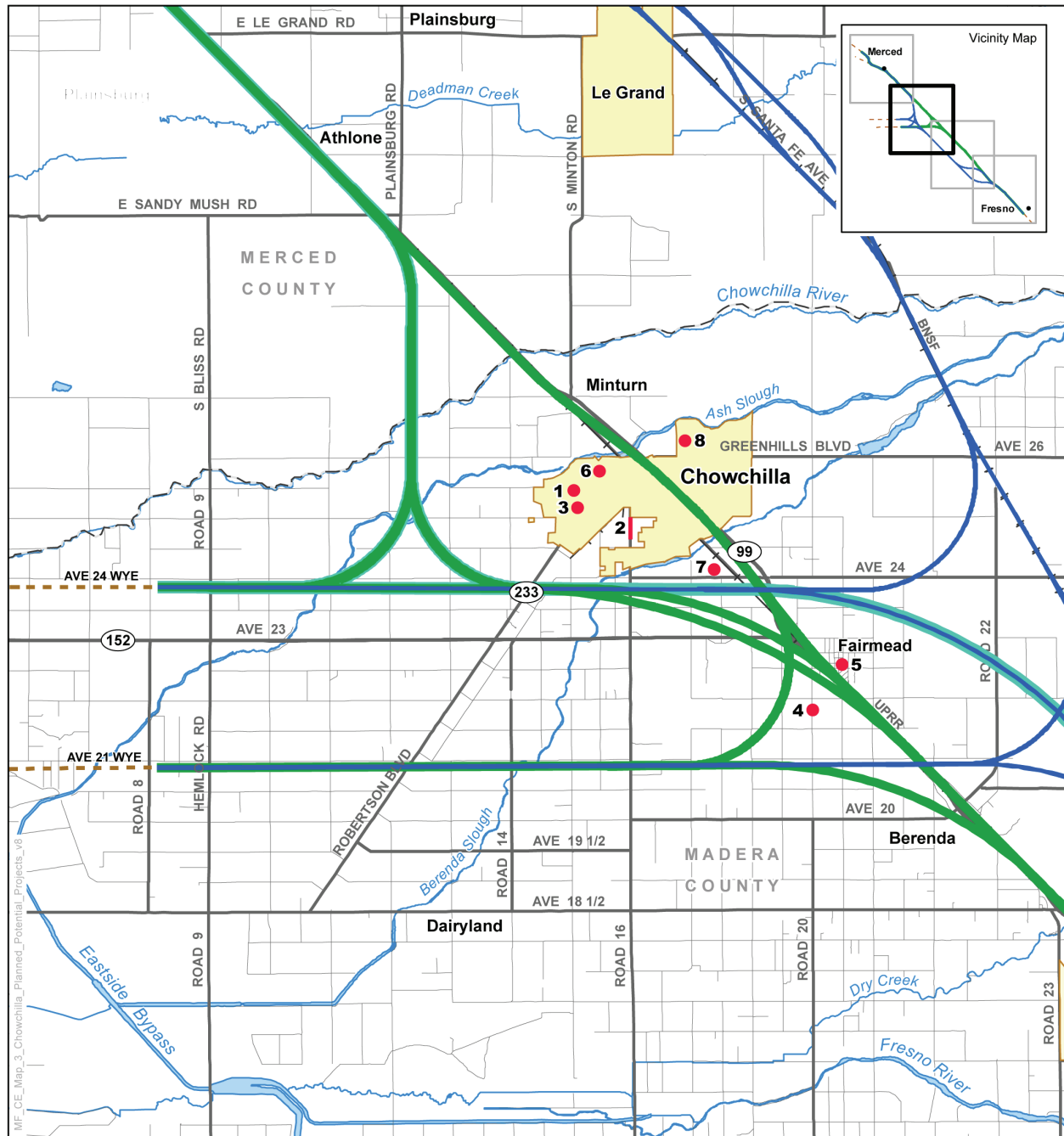


- UPRR/SR 99/BNSF Hybrid Alternative
- UPRR/SR 99 Alternative
- BNSF Alternative
- Other HST Project Section
- Station Study Area
- City Limits
- County Boundary
- 1 Planned or Potential Project (See List at Right)
- 23 Extent of Railroad Improvements

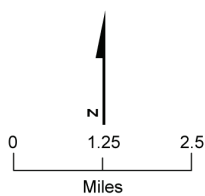
- 1. Joe Lourenco Dairy Expansion #2
- 2. Red Rock Dairy
- 3. Jaxon Enterprises
- 4. Le Grand Community Plan
- 5. Castle Special Planning Zone
- 6. Tesoro Viejo Specific Plan
- 7. Madera Ranch Quarry
- 8. Gunner Ranch West Specific Plan
- 9. Gateway Village
- 10. North Shore at Millerton Lake
- 11. Sierra Meadows
- 12. Raymond Area Plan
- 13. SE Madera Co. Plan
- 14. Liberty Grove Specific Plan
- 15. Hildreth Creek Quarry
- 16. Austin Quarry
- 17. Planada 15

- 18. Tra Vigne
- 19. San Joaquin River Ranch Specific Plan
- 20. Tatham Specific Plan
- 21. Morgan Specific Plan
- 22. Shaw Specific Plan

Figure 3.19A-2
 Planned and Potential
 Projects and Plans –
 Merced to Fresno Overall
 Project Area



September 30, 2010

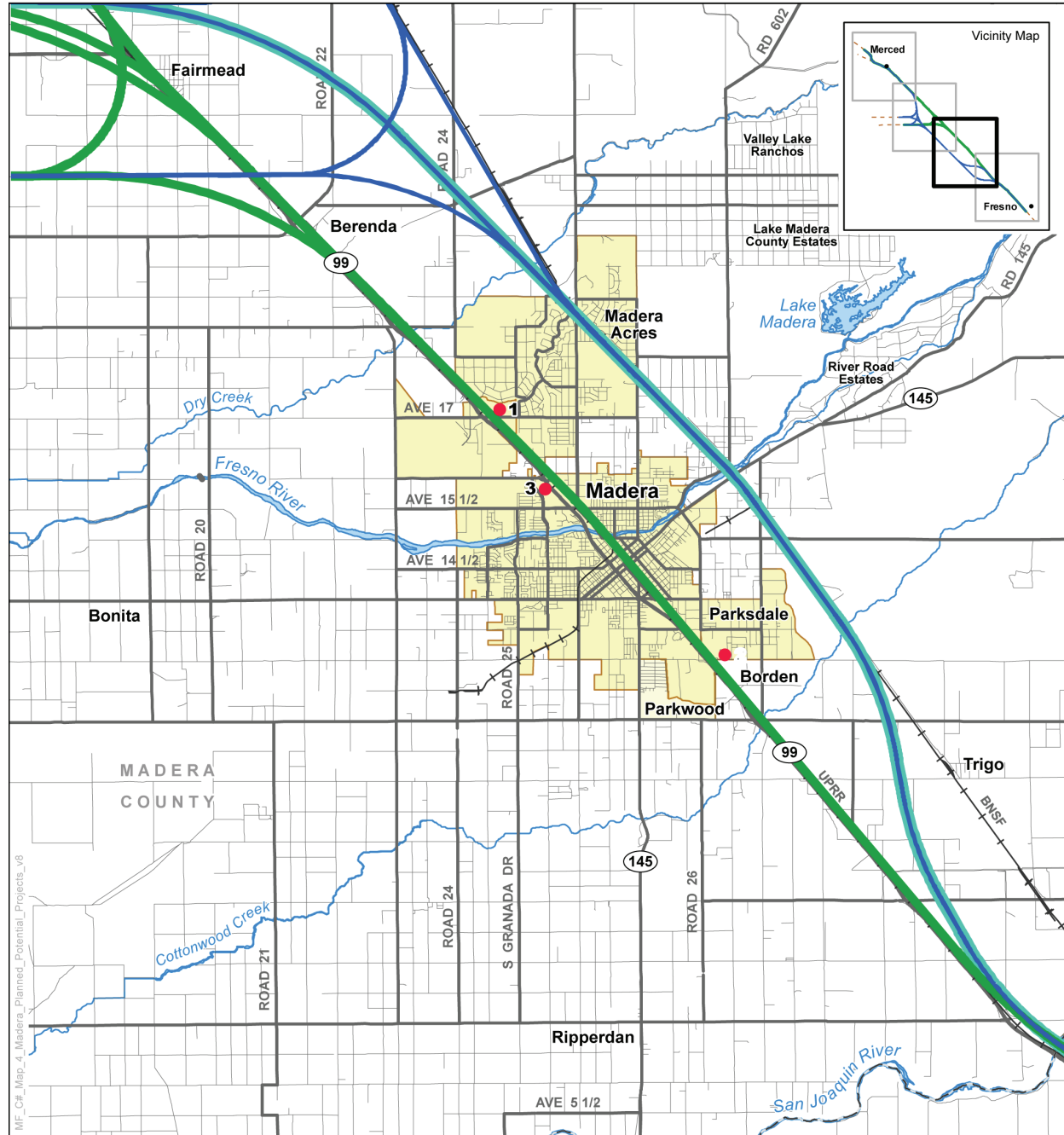


- UPRR/SR 99/BNSF Hybrid Alternative
- UPRR/SR 99 Alternative
- BNSF Alternative
- - - Other HST Project Section
- City Limits
- County Boundary
- **1** Planned or Potential Project (See List at Right)

- 1.** Sonoma Street PES
- 2.** Road 16 Pipeline
- 3.** Washington Road and Robertson Boulevard Intersection
- 4.** Madera Fossil Museum
- 5.** Fairmead Specific Plan
- 6.** Chowchilla Downtown Plan

- 7.** New Water Well and Pipeline to Wastewater Treatment Plant
- 8.** Rancho Calera Specific Plan

Figure 3.19A-3
 Planned and Potential Projects and Plans – Chowchilla Vicinity



October 25, 2010

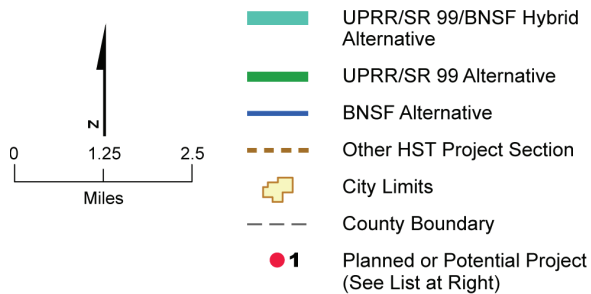
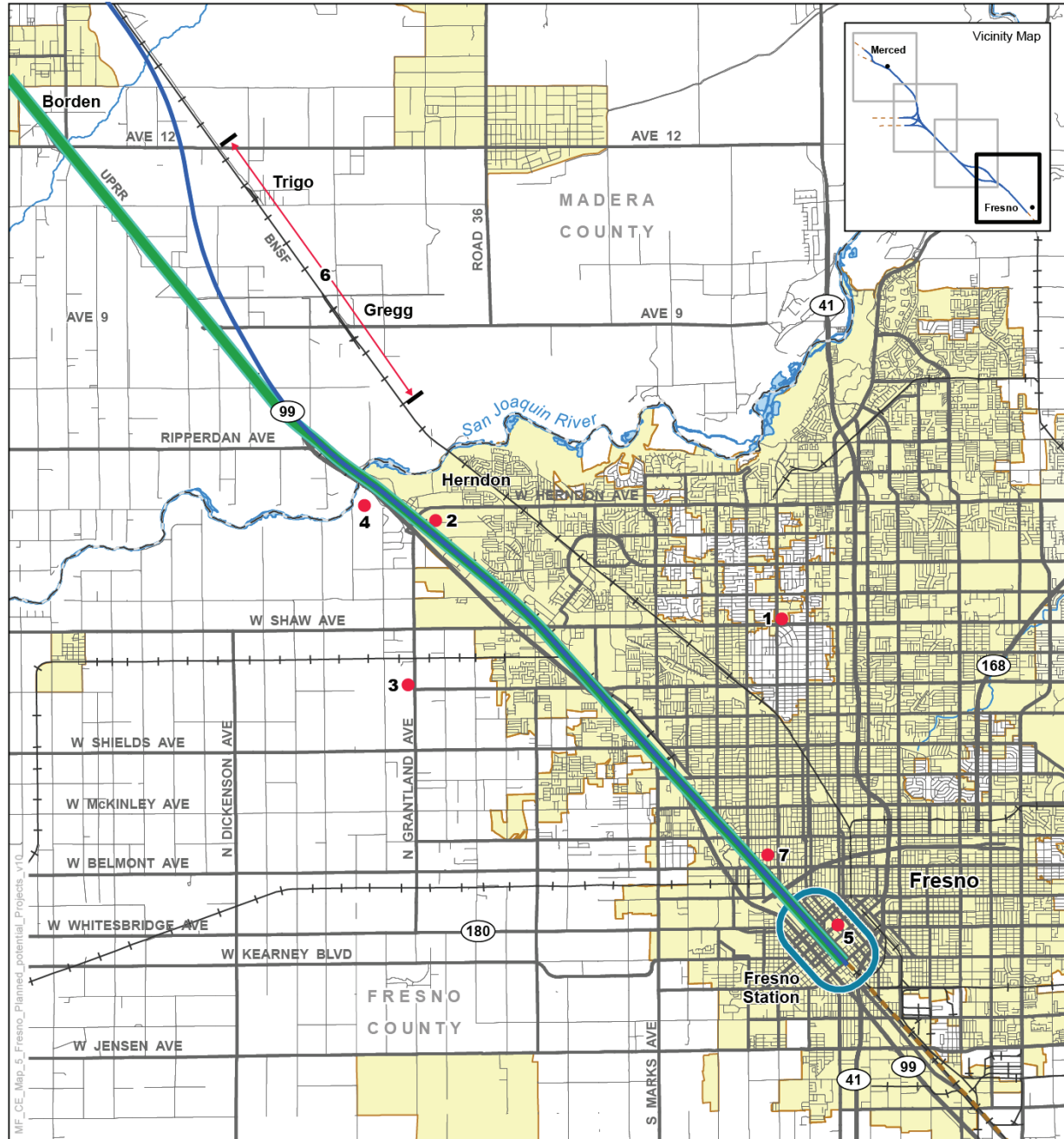


Figure 3.19A-4
 Planned and Potential Projects and Plans – Madera Vicinity



July 27, 2011

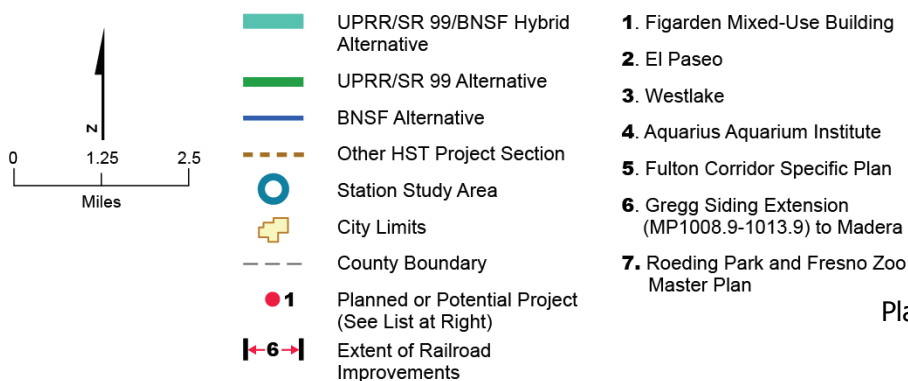
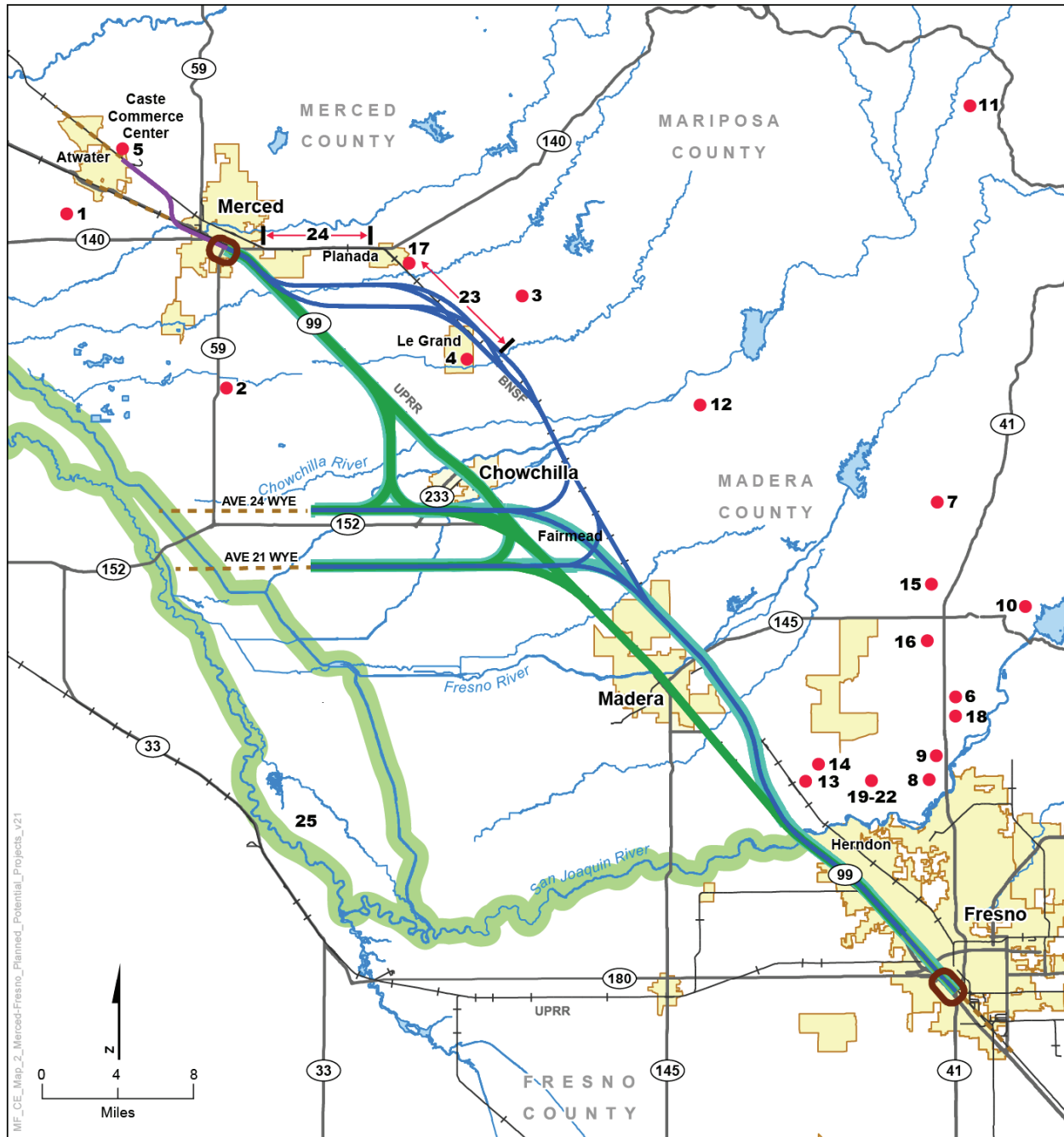


Figure 3.19A-5
 Planned and Potential Projects and Plans – Fresno Vicinity



- | | | | |
|---|--|---|---|
| <ul style="list-style-type: none"> — UPRR/SR 99/BNSF Hybrid Alternative — UPRR/SR 99 Alternative — BNSF Alternative — Potential Heavy Maintenance Trackway - - - Other HST Project Section Station Study Area City Limits - - - County Boundary | <ul style="list-style-type: none"> ● 1 Planned or Potential Project (See List) <23> Extent of Railroad Improvements 1. Joe Lourenco Dairy Expansion #2 2. Red Rock Dairy 3. Jaxon Enterprises 4. Yosemite Ranch Estates 5. Castle Special Planning Zone 6. Tesoro Viejo Specific Plan 7. Madera Ranch Quarry | <ul style="list-style-type: none"> 8. Gunner Ranch West Specific Plan 9. Gateway Village 10. North Shore at Millerton Lake 11. Sierra Meadows 12. Raymond Area Plan 13. SE Madera Co. Plan 14. Liberty Grove Specific Plan 15. Hildreth Creek Quarry 16. Austin Quarry 17. Planada 15 | <ul style="list-style-type: none"> 18. Tra Vigne 19. San Joaquin River Ranch Specific Plan 20. Tatham Specific Plan 21. Morgan Specific Plan 22. Shaw Specific Plan 23. Le Grand to Planada - BNSF 24. Planada to Merced - BNSF 25. San Joaquin River Restoration Program (entire green corridor) |
|---|--|---|---|

July 29, 2011

Figure 3.19A-6
 Planned and Potential Projects
 – BNSF