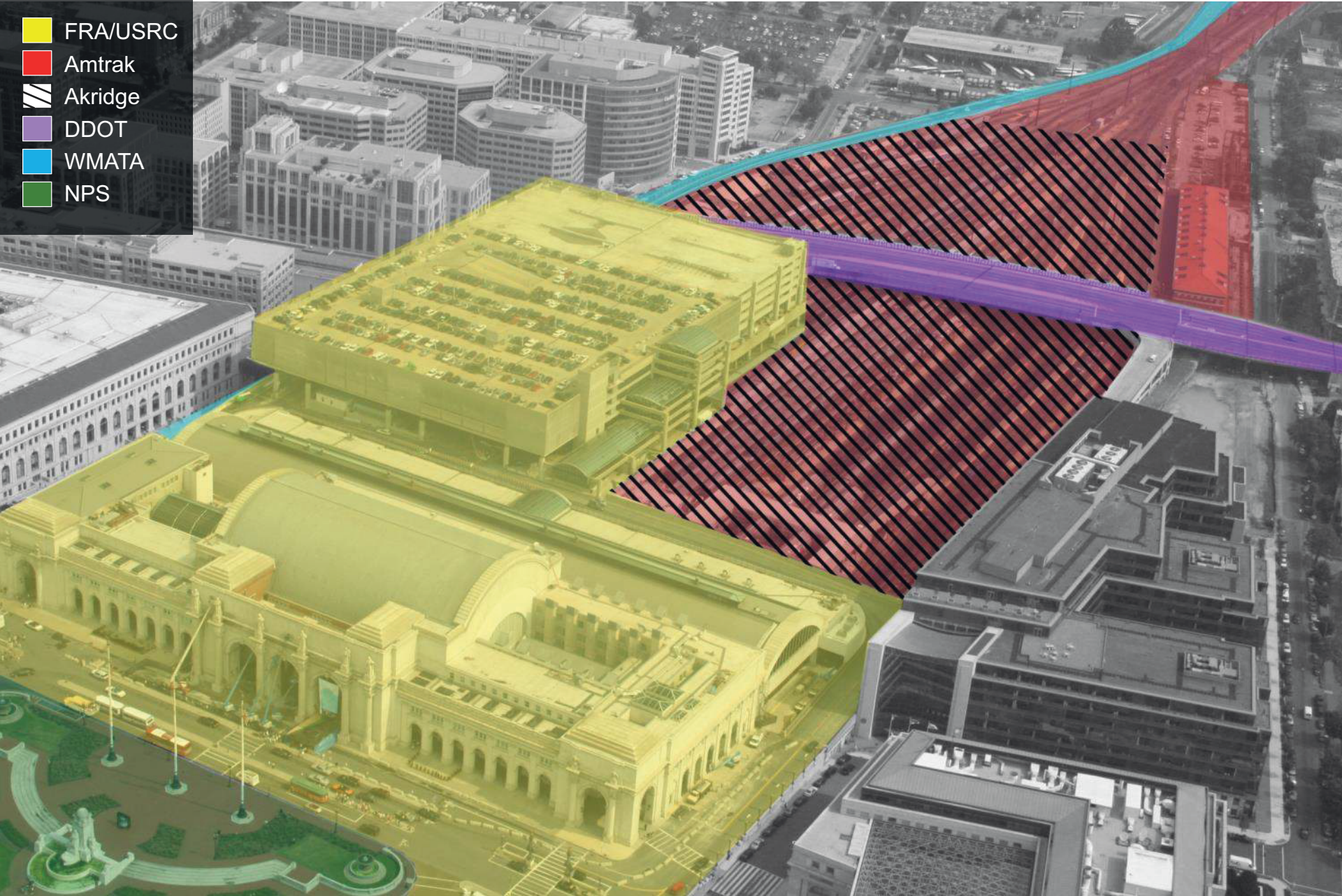


TODAY'S STATION

- FRA/USRC
- Amtrak
- Akridge
- DDOT
- WMATA
- NPS



WUS Project Area



NEW YORK AVE NE

FLORIDA AVE NE

1ST ST NE

K ST NE

H ST NE

MARYLAND AVE NE



Environmental Process

National Environmental Policy Act (NEPA)

- The National Environmental Policy Act of 1969 (NEPA) requires Federal agencies to assess the environmental effects of their proposed actions prior to making decisions.
- NEPA encourages integrated compliance with other environmental laws so that a proposed project's impacts are comprehensively evaluated before implementation.
- To comply with NEPA, FRA and DDOT are preparing an EIS that will be made available for public review and comment.

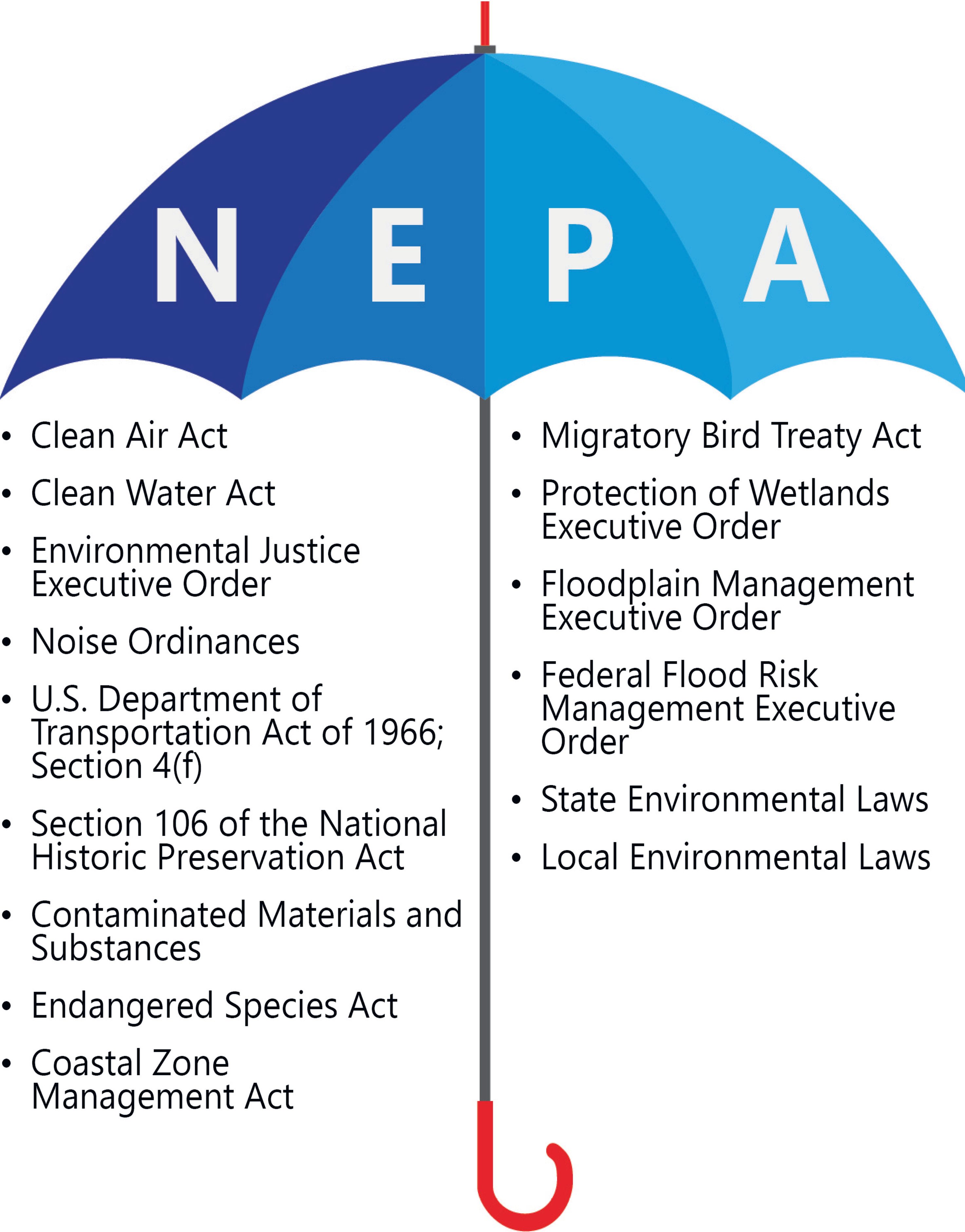
Section 106 of the National Historic Preservation Act

Requires Federal agencies to:

- Consider and determine the direct AND indirect effects of a proposed undertaking on historic properties.
- Consult with State Historic Preservation Offices, Tribes, and other consulting parties.
- Avoid, minimize, or mitigate adverse effects to historic properties.
- See: 36 CFR Part 800 (Protection of Historic Properties).

Section 4(f) of the US Department of Transportation Act

Requires that special effort be made to preserve publicly owned public parks and recreation areas, wildlife/waterfowl refuges and historic sites. No project which uses such lands may be approved unless 1) there is no feasible and prudent alternative to the use of the land and 2) the action includes all possible planning to minimize harm to the property resulting from such use.



Purpose and Need

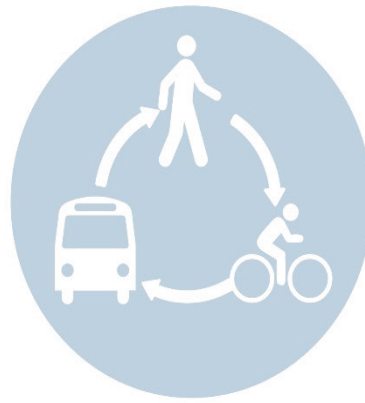
Project Purpose



Railroad
Growth



ADA, Safety,
and Security



Intermodal
Travel



Customer
Experience



Neighborhood/
Land Use
Integration

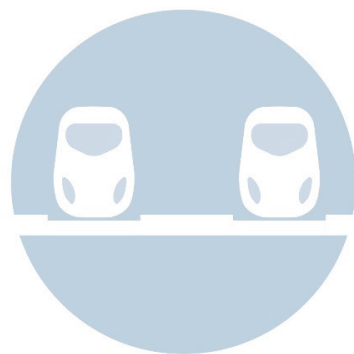


Station's
Economic
Viability

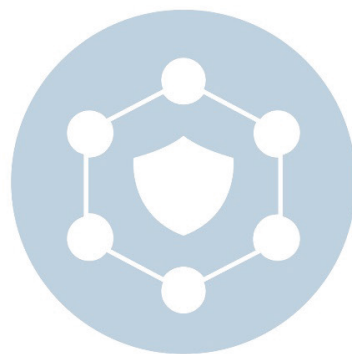


Station
Preservation

Project is Needed to Improve:



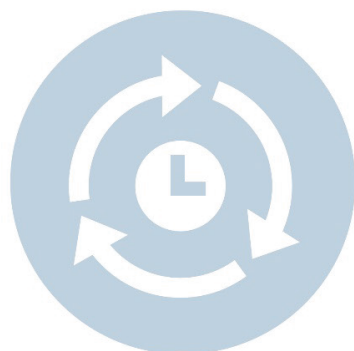
Rail
Capacity



Reliability



Safety



Efficiency



Accessibility



Security