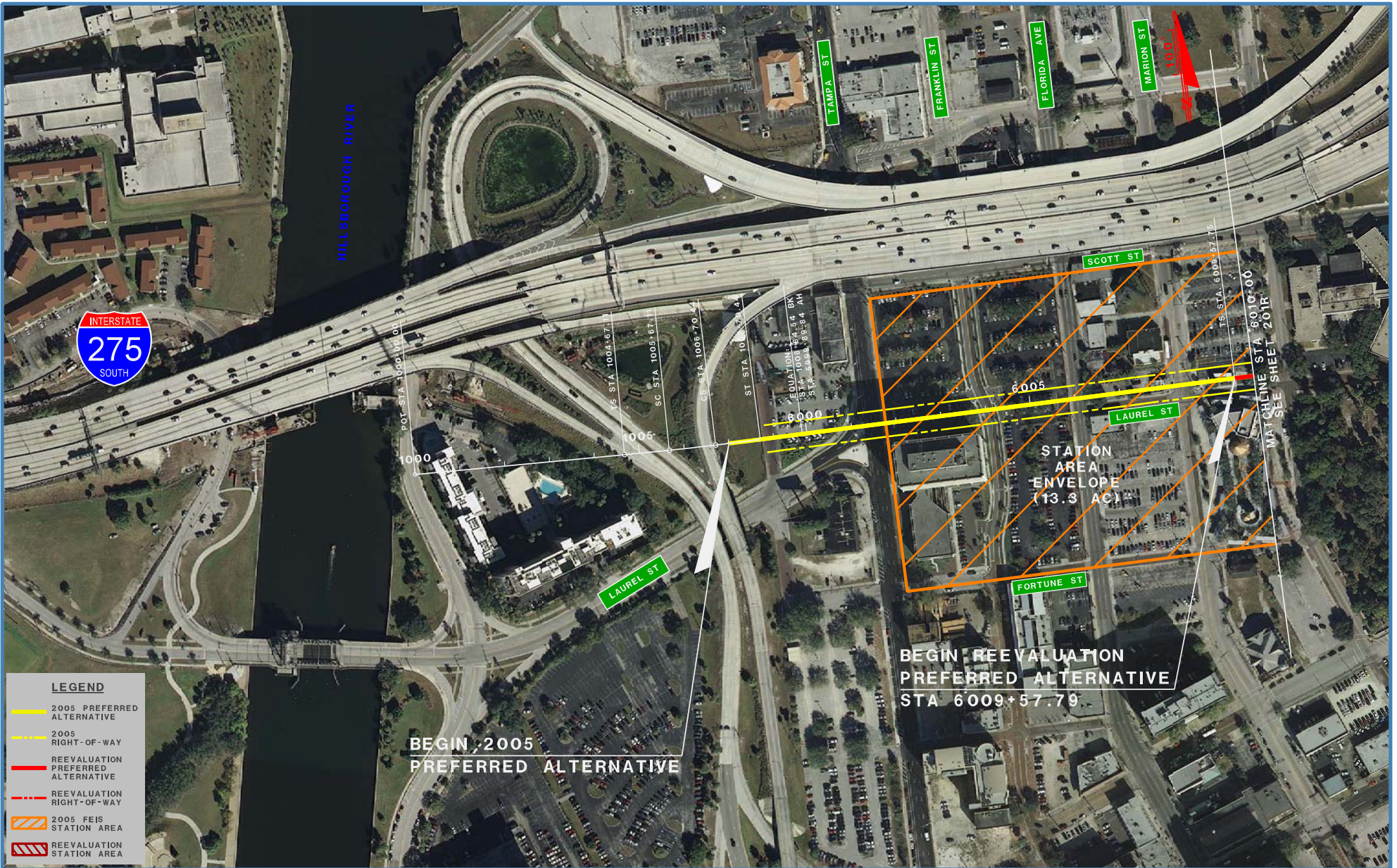




**APPENDIX B:  
PRELIMINARY ENGINEERING DRAWINGS**



9/30/2009 3:42:05 PM P:\644805\valley\Manual\_sheets\WDR\_dpmr160p.dgn



**LEGEND**

- 2005 PREFERRED ALTERNATIVE
- 2005 RIGHT-OF-WAY
- REEVALUATION PREFERRED ALTERNATIVE
- REEVALUATION RIGHT-OF-WAY
- 2005 FEIS STATION AREA
- REEVALUATION STATION AREA

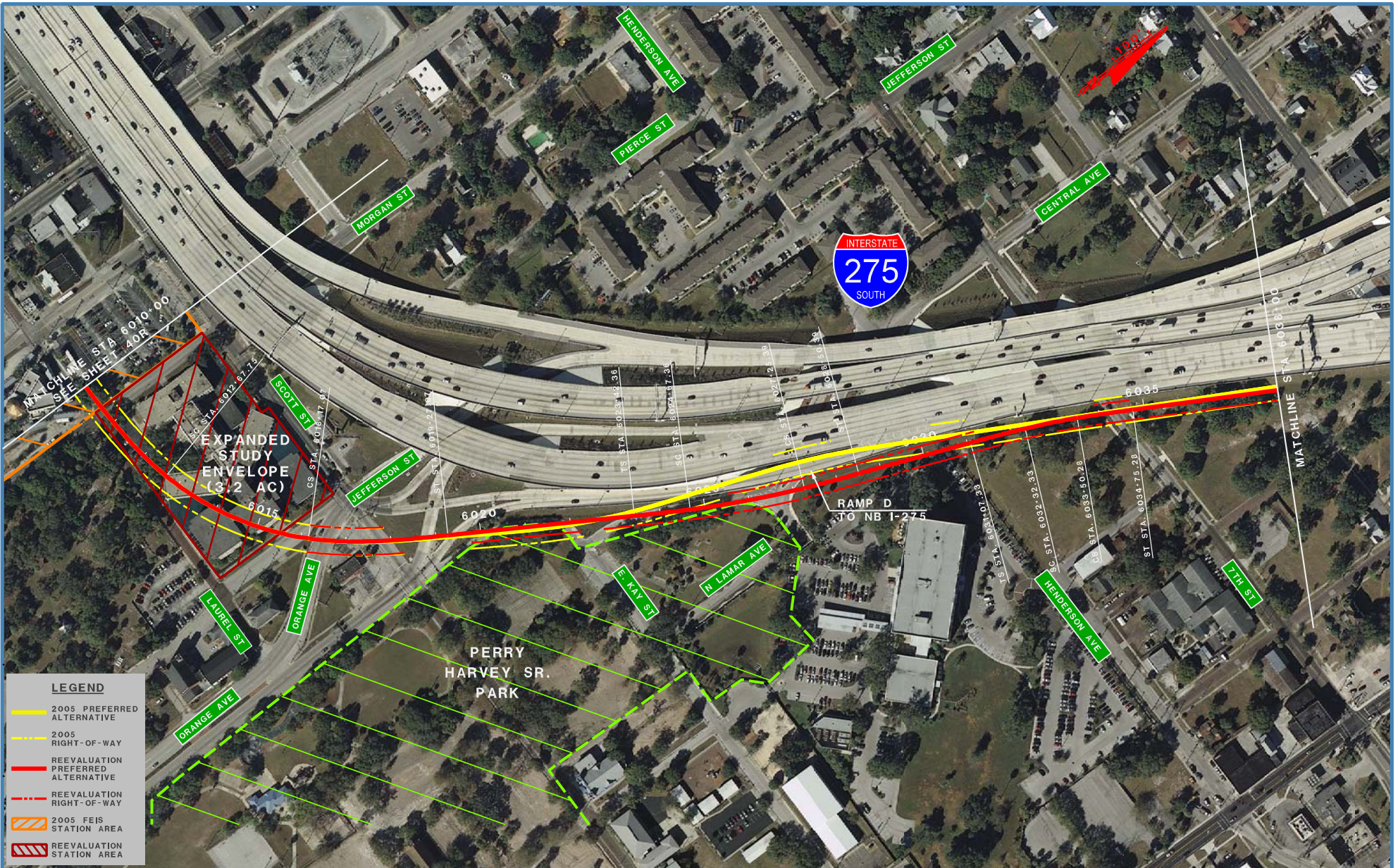
BEGIN 2005  
PREFERRED ALTERNATIVE

BEGIN REEVALUATION  
PREFERRED ALTERNATIVE  
STA 6009+57.79

STATION  
AREA  
ENVELOPE  
(13.3 AC)

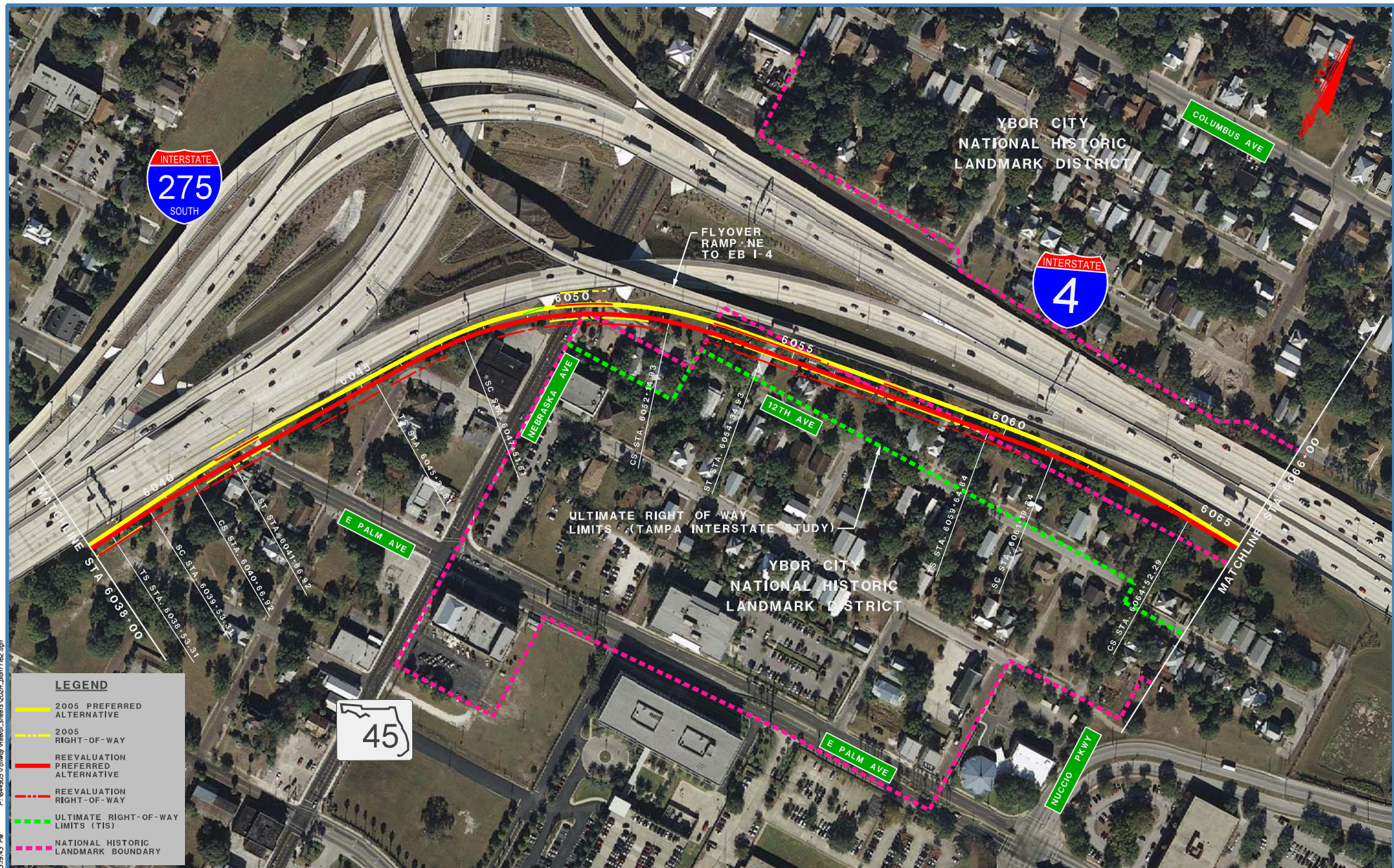


9/30/2009 3:17:45 PM P:\644905\Railway\Reeval\_Alt1\Sheet\201R\_Dem.r16.dgn



LEGEND	
	2005 PREFERRED ALTERNATIVE
	2005 RIGHT-OF-WAY
	REEVALUATION PREFERRED ALTERNATIVE
	REEVALUATION RIGHT-OF-WAY
	2005 FEIS STATION AREA
	REEVALUATION STATION AREA

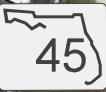




P:\644905\Railway\Aerial\_Images\2020\_2021\162.dgn  
 3/9/2020 3:59:43 PM

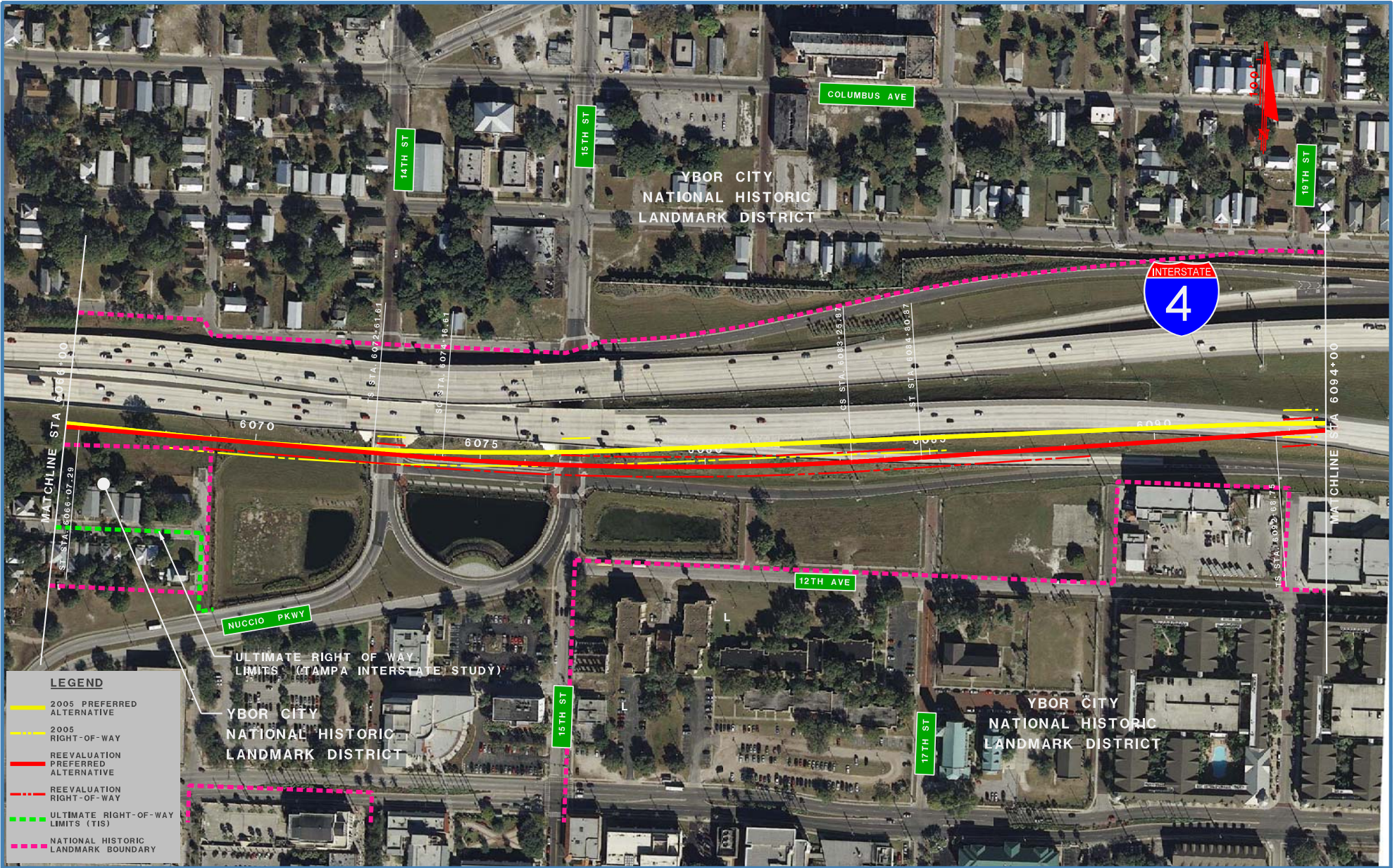
**LEGEND**

- 2005 PREFERRED ALTERNATIVE
- 2005 RIGHT-OF-WAY
- REEVALUATION PREFERRED ALTERNATIVE
- - - REEVALUATION RIGHT-OF-WAY
- - - ULTIMATE RIGHT-OF-WAY LIMITS (TIS)
- - - NATIONAL HISTORIC LANDMARK BOUNDARY





9/30/2009 3:29:35 PM P:\644905\Railway\Reval\_Aerials\033R\_Aerial\_163.dgn



**LEGEND**

- 2005 PREFERRED ALTERNATIVE
- - - 2005 RIGHT-OF-WAY
- REEVALUATION PREFERRED ALTERNATIVE
- - - REEVALUATION RIGHT-OF-WAY
- - - ULTIMATE RIGHT-OF-WAY LIMITS (TIS)
- - - NATIONAL HISTORIC LANDMARK BOUNDARY



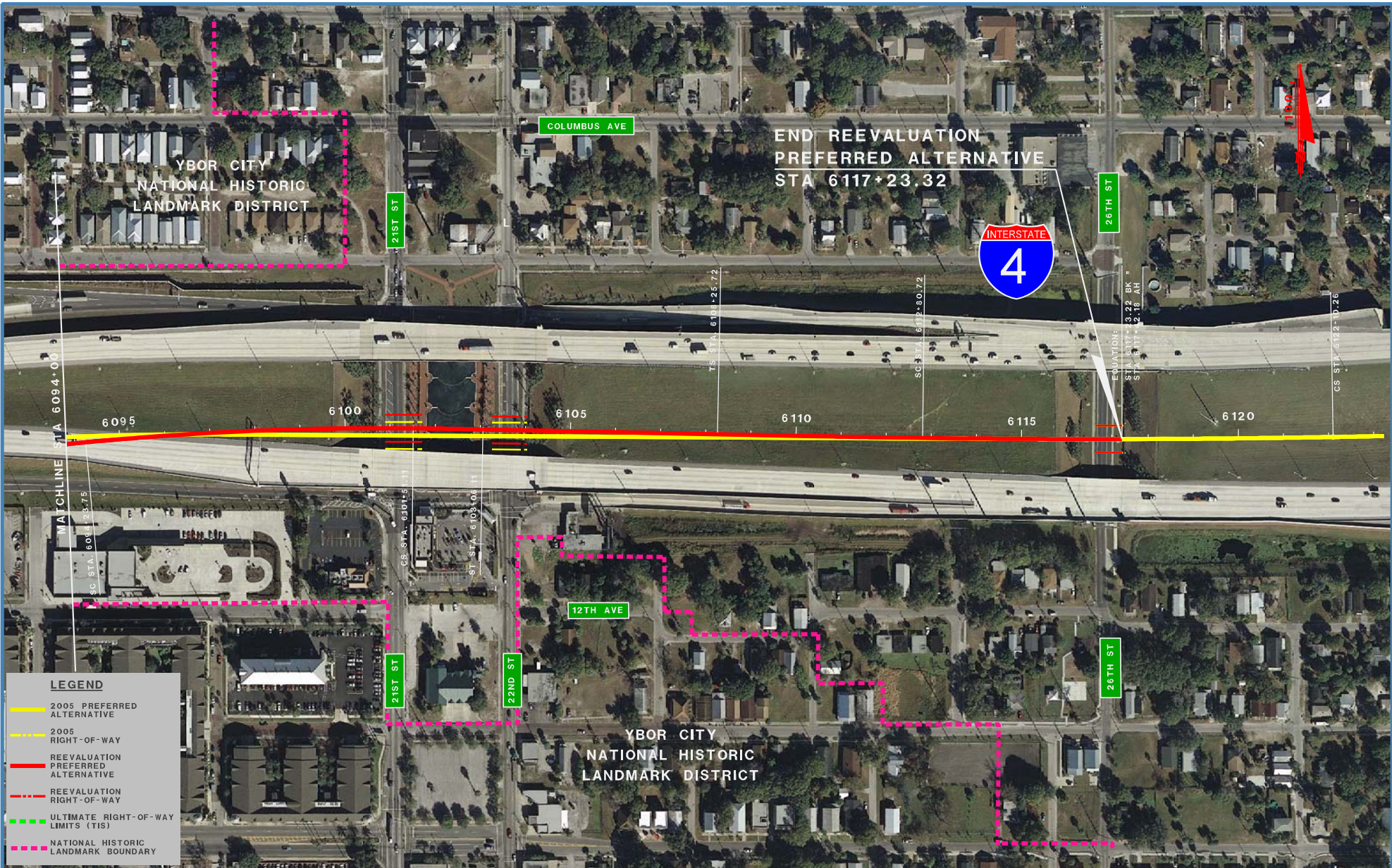
STATE OF FLORIDA  
DEPARTMENT OF TRANSPORTATION

FLORIDA HIGH SPEED RAIL  
REEVALUATION PLAN


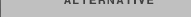


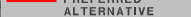

SHEET NO.  
203R



9/30/2009 3:23:34 PM P:\646025\highway\reval\_lines\52046\_2009.r64.dgn



**LEGEND**

-  2005 PREFERRED ALTERNATIVE
-  2005 RIGHT-OF-WAY
-  REEVALUATION PREFERRED ALTERNATIVE
-  REEVALUATION RIGHT-OF-WAY
-  ULTIMATE RIGHT-OF-WAY LIMITS (TIS)
-  NATIONAL HISTORIC LANDMARK BOUNDARY





RELOCATED  
COLUMBUS DRIVE  
(SEE REEVALUATION  
PROFILE SHEET 334R)

- LEGEND**
- 2005 PREFERRED ALTERNATIVE
  - 2005 RIGHT-OF-WAY
  - REEVALUATION PREFERRED ALTERNATIVE
  - REEVALUATION RIGHT-OF-WAY

9/30/2009 3:26:05 PM P:\644605\valway\reval\_sheets\207R\_207R.rvt.dgn





EMERGENCY EVACUATION  
CROSSOVER  
(SEE REEVALUATION  
PROFILE SHEETS  
334R AND 335R)

**LEGEND**

- 2005 PREFERRED ALTERNATIVE
- 2005 RIGHT-OF-WAY
- REEVALUATION PREFERRED ALTERNATIVE
- REEVALUATION RIGHT-OF-WAY

9/30/2009 3:30:43 PM P:\644905\Railway\Reeval\_Sheets\334R\_2009\_160.dgn

**PARSONS**

**PBS&J**

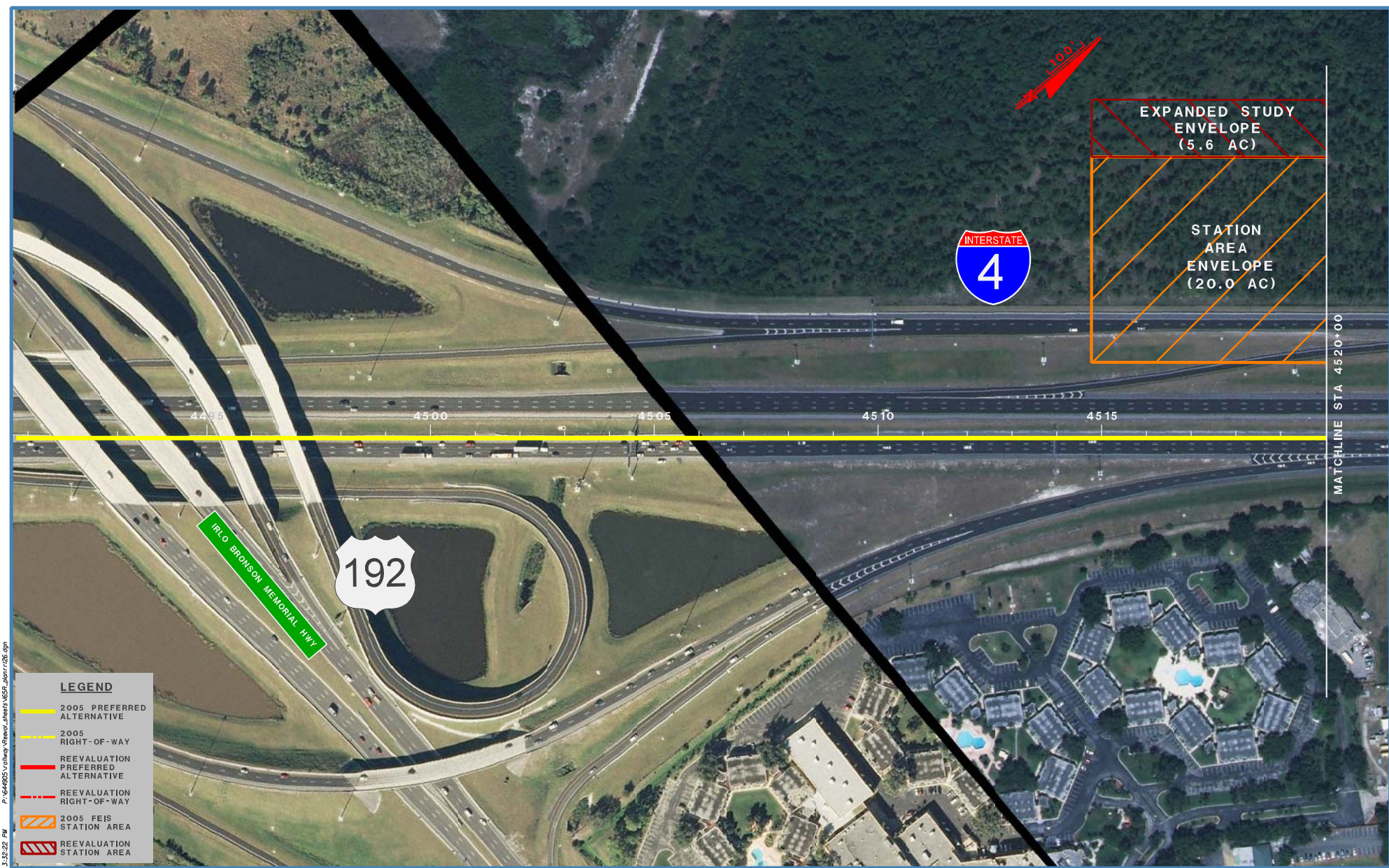
*STATE OF FLORIDA  
DEPARTMENT OF TRANSPORTATION*

**FLORIDA HIGH SPEED RAIL  
REEVALUATION PLAN**

SHEET NO.

209 R





P:\644805\Railway\General\_Sheets\655R\_0001126.dgn  
 3:32:22 PM  
 9/30/2009

LEGEND	
	2005 PREFERRED ALTERNATIVE
	2005 RIGHT-OF-WAY
	REEVALUATION PREFERRED ALTERNATIVE
	REEVALUATION RIGHT-OF-WAY
	2005 FEIS STATION AREA
	REEVALUATION STATION AREA

**PARSONS**

**PBSJ**

STATE OF FLORIDA  
 DEPARTMENT OF TRANSPORTATION

FLORIDA HIGH SPEED RAIL  
 REEVALUATION PLAN

SHEET NO.  
 165 R





**LEGEND**

- 2005 PREFERRED ALTERNATIVE
- 2005 RIGHT-OF-WAY
- REEVALUATION PREFERRED ALTERNATIVE
- REEVALUATION RIGHT-OF-WAY
- 2005 FEIS STATION AREA
- REEVALUATION STATION AREA

P:\644805\Railway\General\_Sheets\666\_Doc\1127.dgn  
 3:33:41 PM  
 9/30/2009

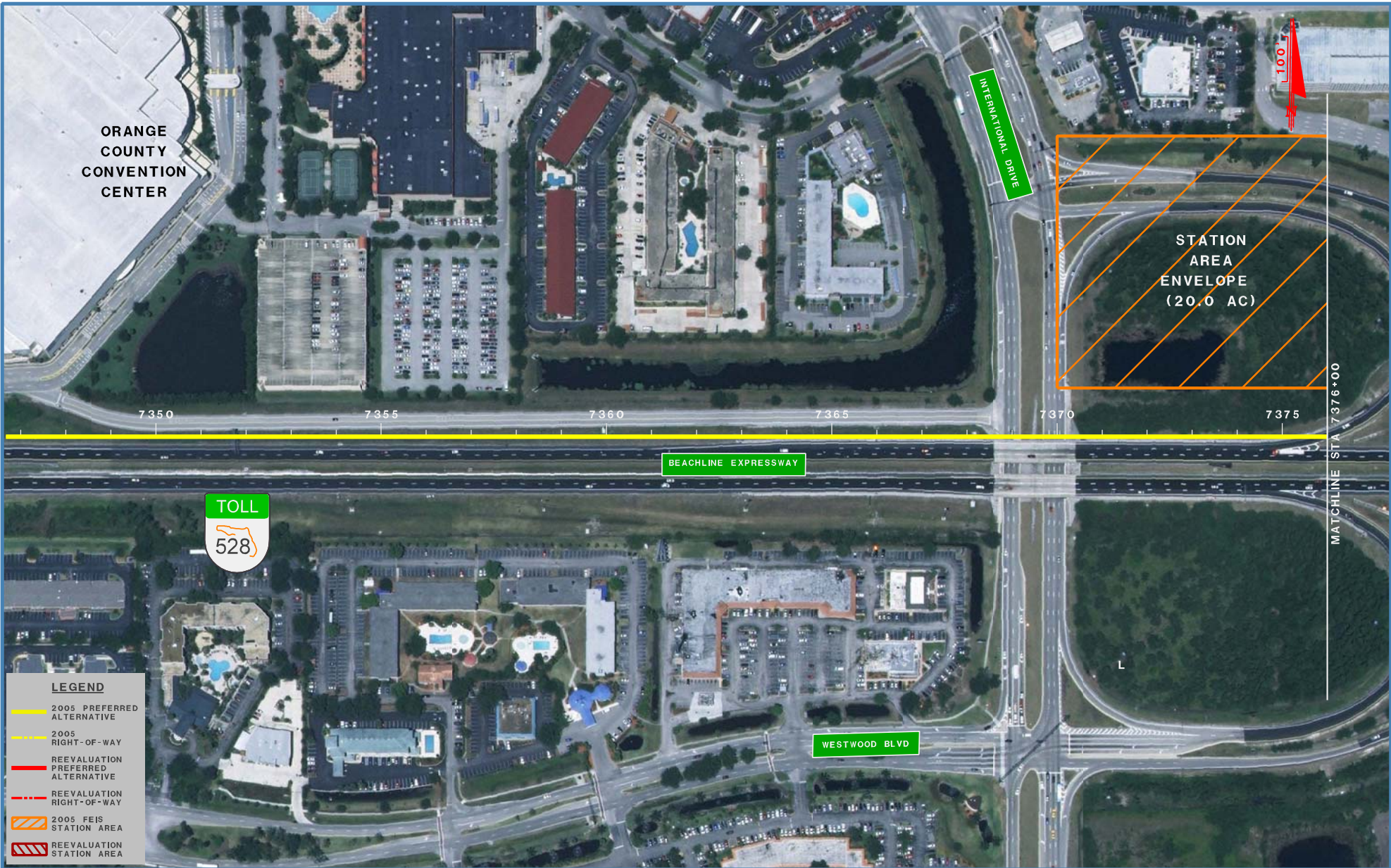


STATE OF FLORIDA  
 DEPARTMENT OF TRANSPORTATION

FLORIDA HIGH SPEED RAIL  
 REEVALUATION PLAN

SHEET NO.  
 166 R





ORANGE COUNTY CONVENTION CENTER

7350

7355

7360

7365

7370

7375

BEACHLINE EXPRESSWAY



**LEGEND**

- 2005 PREFERRED ALTERNATIVE
- 2005 RIGHT-OF-WAY
- REEVALUATION PREFERRED ALTERNATIVE
- REEVALUATION RIGHT-OF-WAY
- 2005 FEIS STATION AREA
- REEVALUATION STATION AREA

INTERNATIONAL DRIVE

STATION AREA ENVELOPE (20.0 AC)

MATCHLINE STA 7376+00

WESTWOOD BLVD



9/30/2009 3:35:36 PM P:\644605\Railway\General\_Sheets\230R\_Station190.dgn

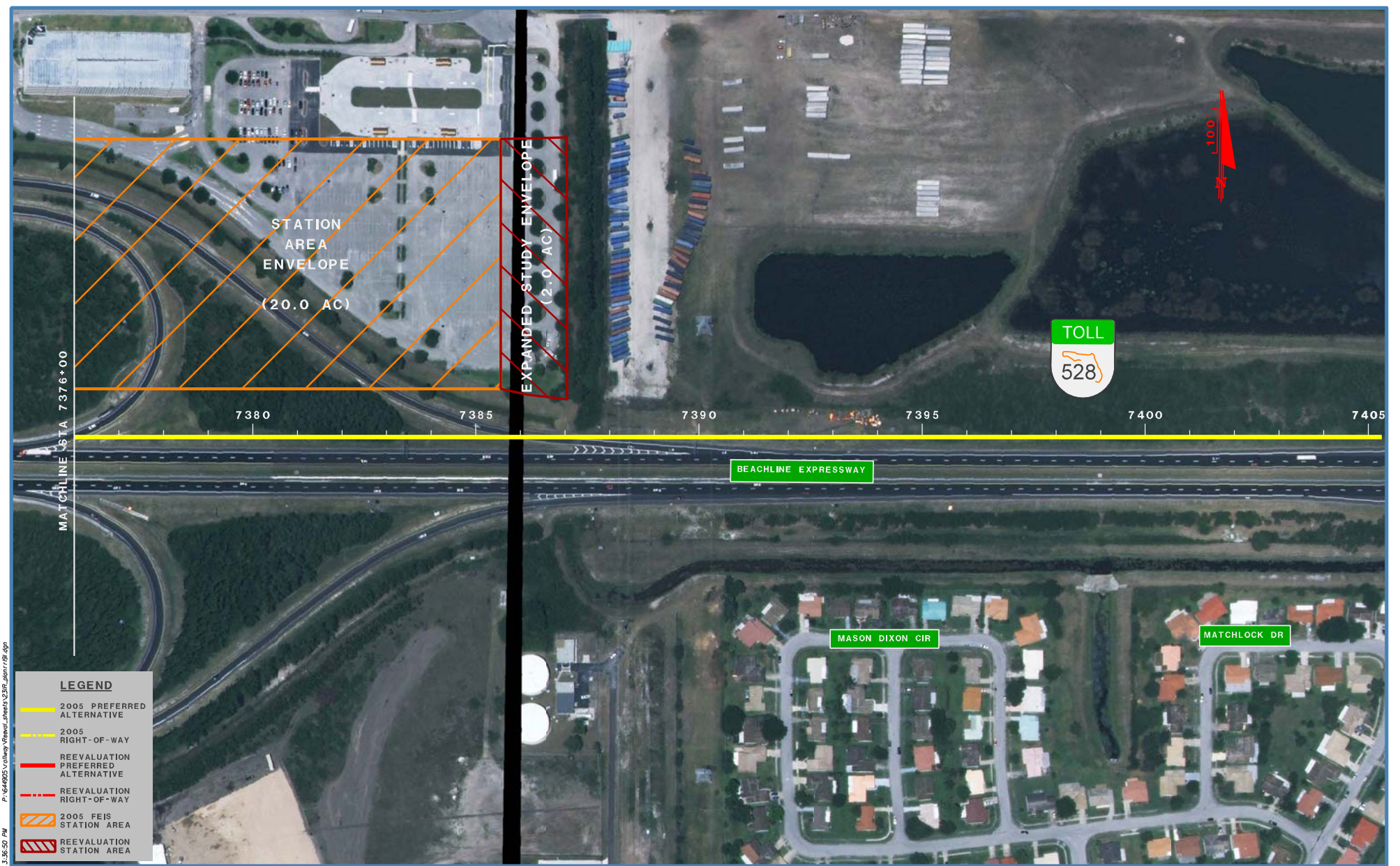


STATE OF FLORIDA  
DEPARTMENT OF TRANSPORTATION

FLORIDA HIGH SPEED RAIL  
REEVALUATION PLAN

SHEET NO.  
230R





MATCHLINE STA 7 376+00

STATION  
AREA  
ENVELOPE  
(20.0 AC)

EXPANDED STUDY ENVELOPE  
(2.0 AC)



BEACHLINE EXPRESSWAY

MASON DIXON CIR

MATCHLOCK DR

- LEGEND**
- 2005 PREFERRED ALTERNATIVE
  - 2005 RIGHT-OF-WAY
  - REEVALUATION PREFERRED ALTERNATIVE
  - REEVALUATION RIGHT-OF-WAY
  - 2005 FEIS STATION AREA
  - REEVALUATION STATION AREA

9/30/2009 3:36:50 PM P:\644805\Railway\General\_Sheets\231R\_231R1101.dgn

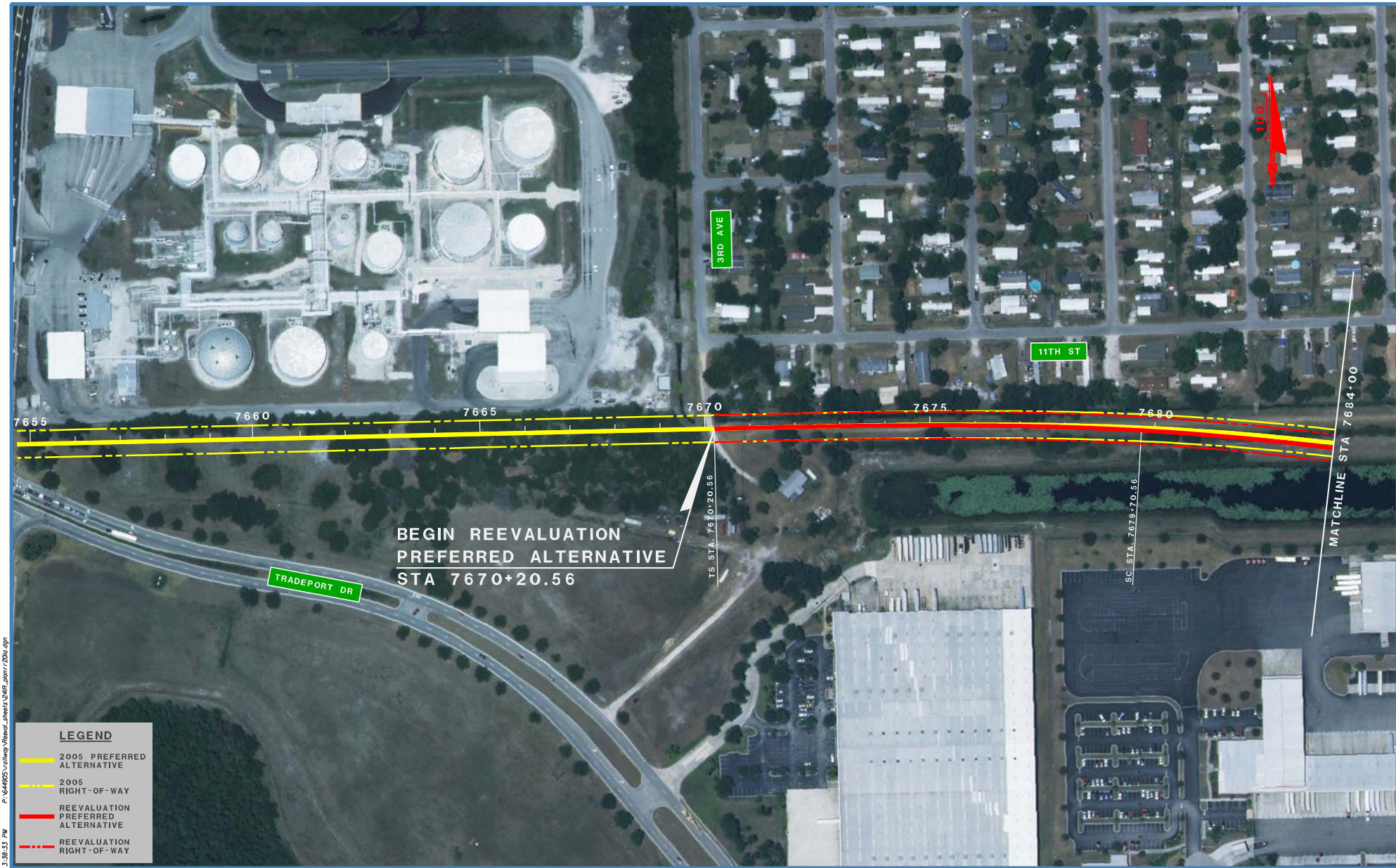


STATE OF FLORIDA  
DEPARTMENT OF TRANSPORTATION

FLORIDA HIGH SPEED RAIL  
REEVALUATION PLAN

SHEET NO.  
231R





9/30/2009 3:38:53 PM P:\64605\Highway Renewal\_Sheets\Sheet\_241R\_Demr120a.dgn

LEGEND	
	2005 PREFERRED ALTERNATIVE
	2005 RIGHT-OF-WAY
	REEVALUATION PREFERRED ALTERNATIVE
	REEVALUATION RIGHT-OF-WAY

**PARSONS**

**PBS&J**

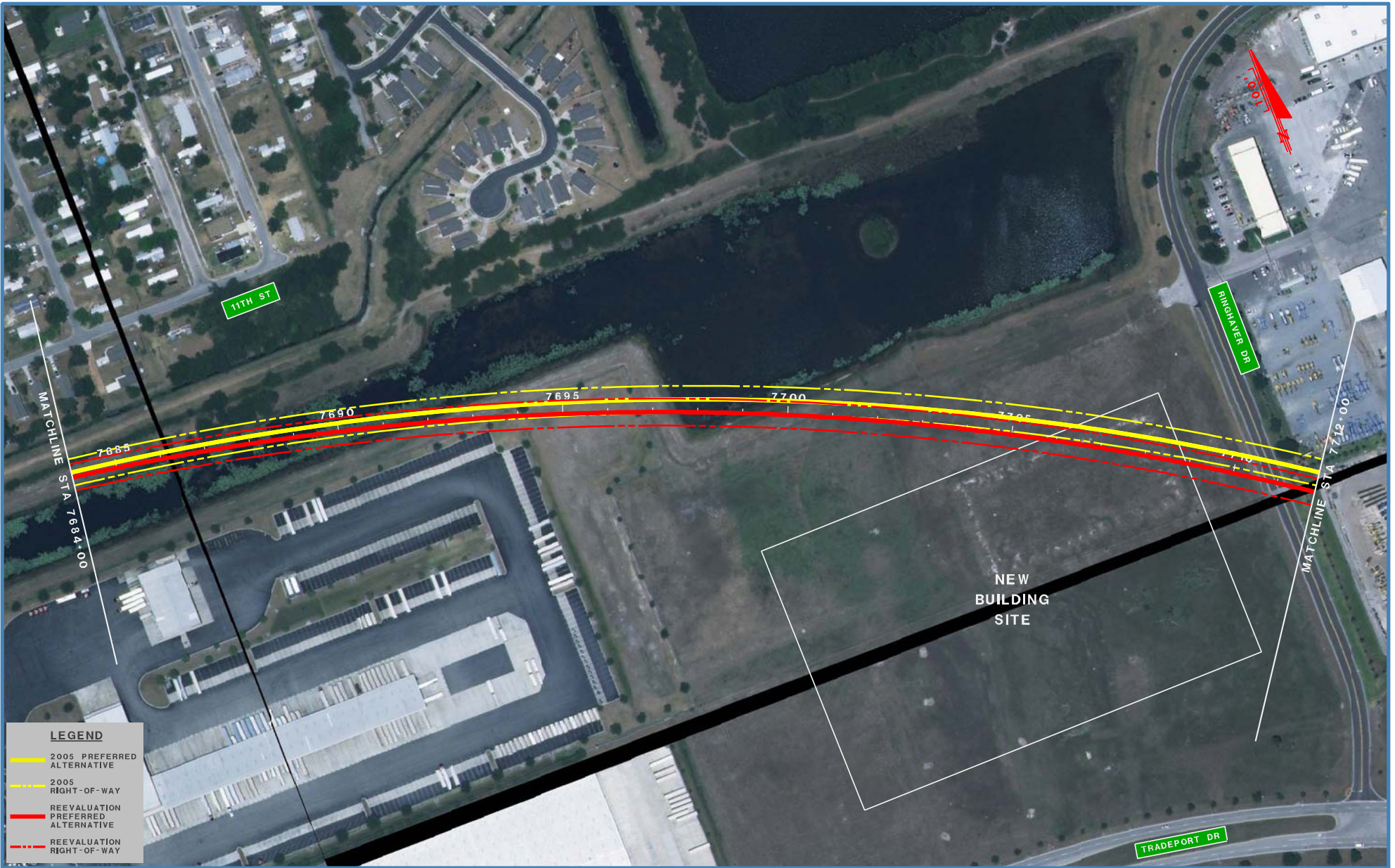
STATE OF FLORIDA  
DEPARTMENT OF TRANSPORTATION

FLORIDA HIGH SPEED RAIL  
REEVALUATION PLAN

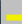

SHEET NO.  
241R



P:\644905\Valley View\General\_Sheets\242R\_2020.dgn  
3:44:45 PM  
9/30/2020



**LEGEND**

-  2005 PREFERRED ALTERNATIVE
-  2005 RIGHT-OF-WAY
-  REEVALUATION PREFERRED ALTERNATIVE
-  REEVALUATION RIGHT-OF-WAY

**PARSONS**

**PBS&J**

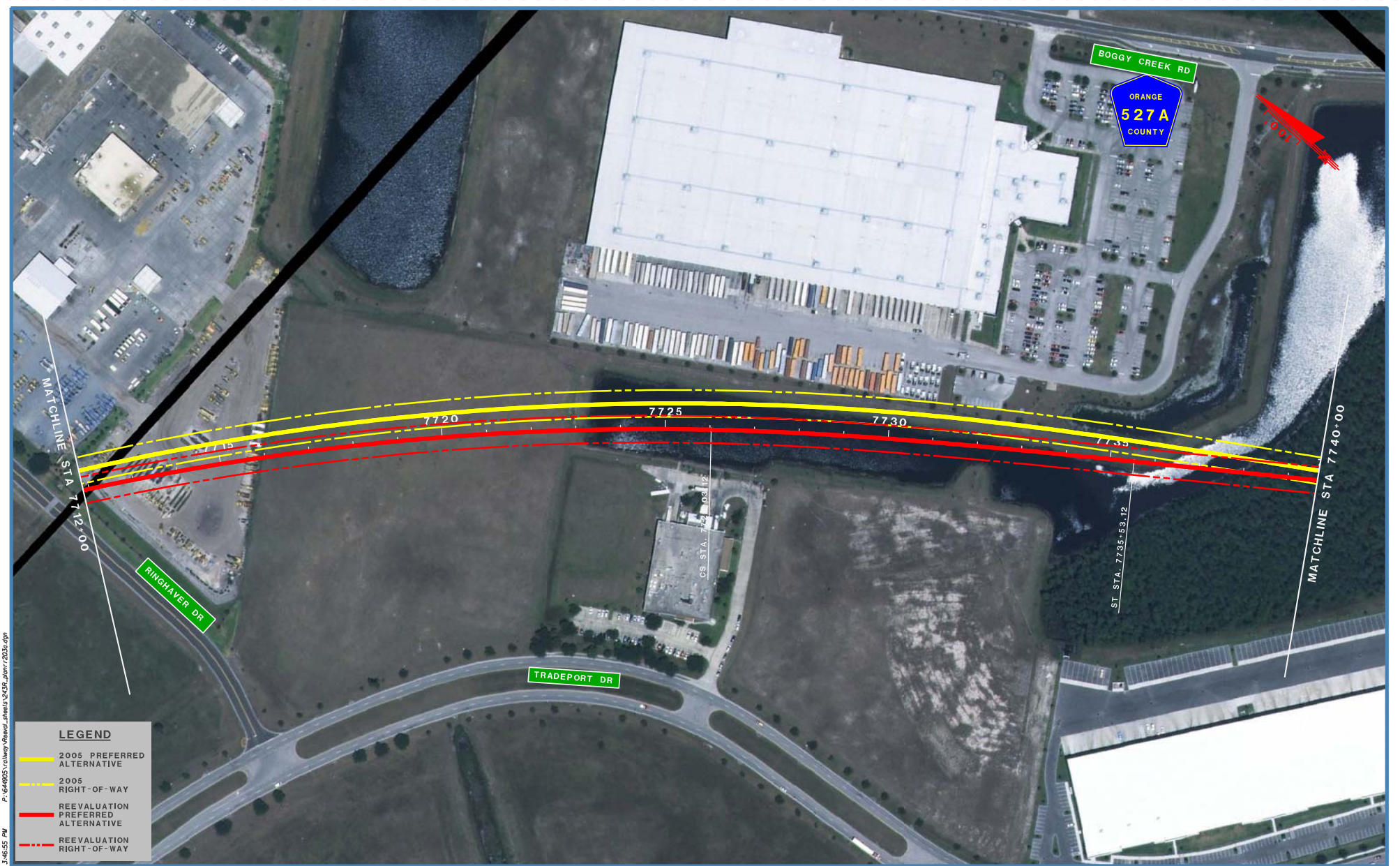
STATE OF FLORIDA  
DEPARTMENT OF TRANSPORTATION

FLORIDA HIGH SPEED RAIL  
REEVALUATION PLAN

SHEET NO.

242R





9/30/2009 3:45:55 PM P:\644905\Railway\Reeval\Sheet1\243R\_2009.dgn

LEGEND	
	2005 PREFERRED ALTERNATIVE
	2005 RIGHT-OF-WAY
	REEVALUATION PREFERRED ALTERNATIVE
	REEVALUATION RIGHT-OF-WAY

**PARSONS**

**PBS&J**

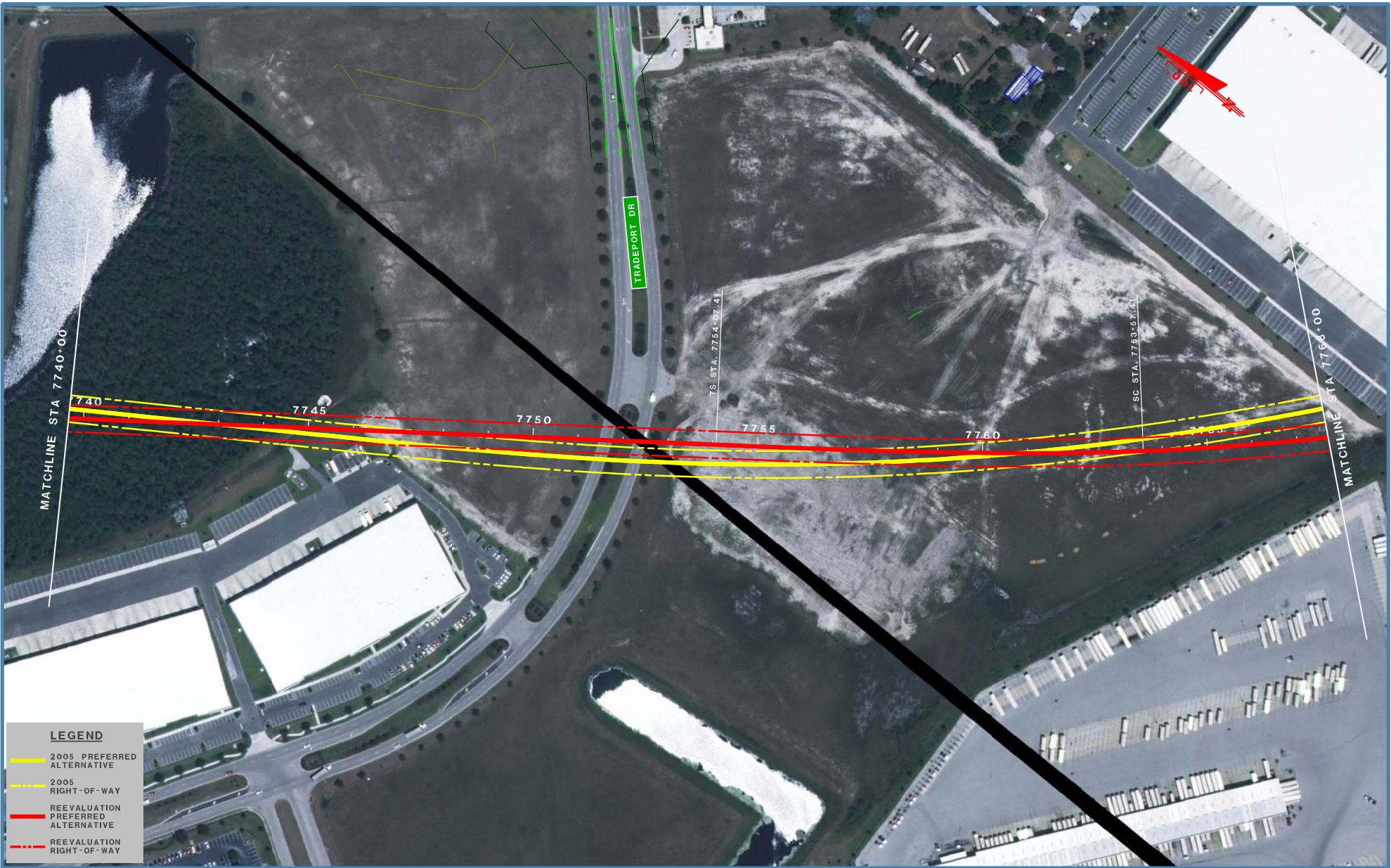
STATE OF FLORIDA  
DEPARTMENT OF TRANSPORTATION

FLORIDA HIGH SPEED RAIL  
REEVALUATION PLAN

SHEET NO.  
243R



9/30/2009 3:46:36 PM P:\646025\Railway\Reeval\_Sheets\244R\_2009.dwg



LEGEND	
	2005 PREFERRED ALTERNATIVE
	2005 RIGHT-OF-WAY
	REEVALUATION PREFERRED ALTERNATIVE
	REEVALUATION RIGHT-OF-WAY

**PARSONS**

**PBSJ**

STATE OF FLORIDA  
DEPARTMENT OF TRANSPORTATION

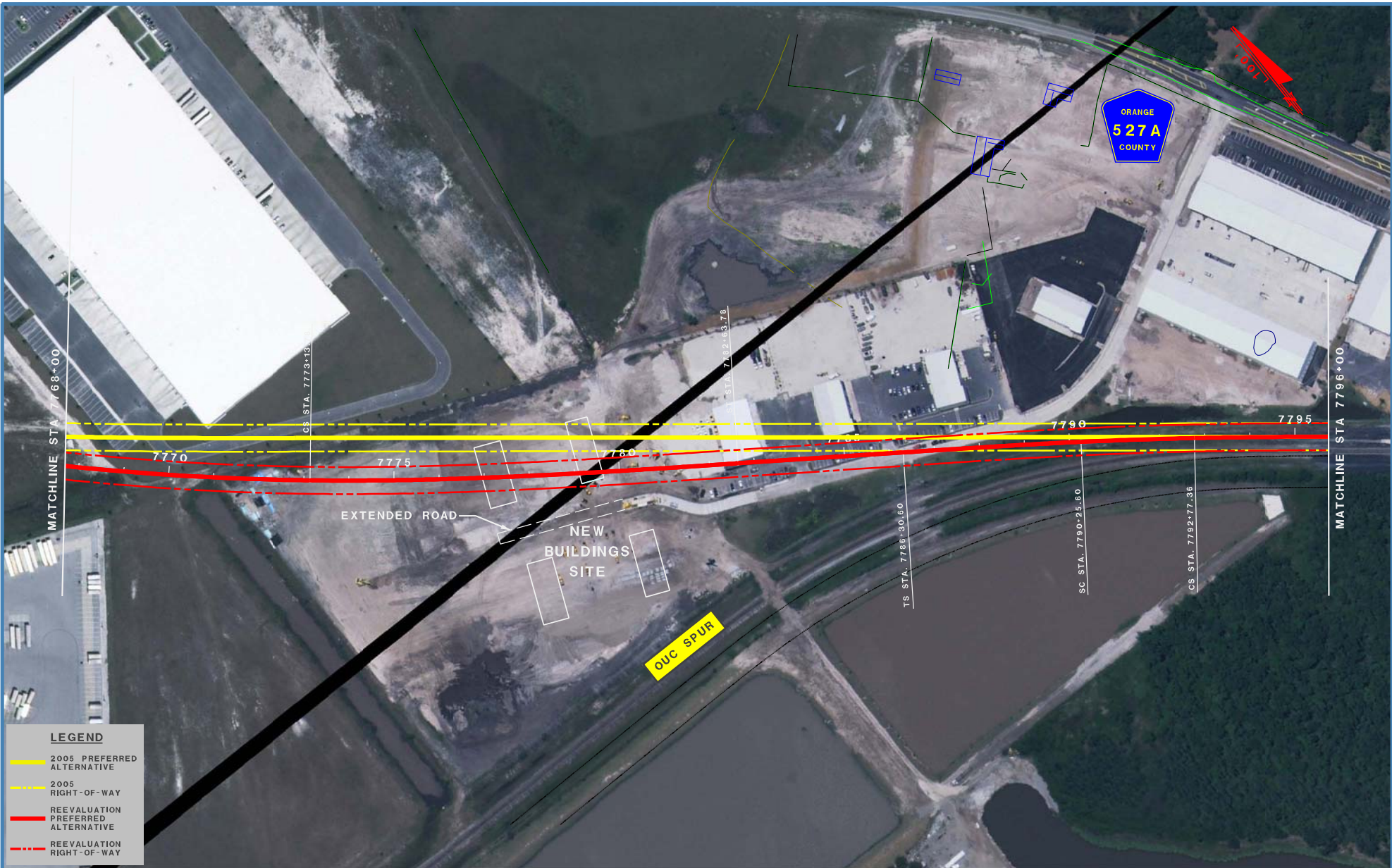
FLORIDA HIGH SPEED RAIL  
REEVALUATION PLAN

SHEET NO.

244R



9/30/2009 3:50:00 PM P:\644605\Railway\Reval\_Sheets\6456\_20091205.dgn



**LEGEND**

- 2005 PREFERRED ALTERNATIVE
- - - 2005 RIGHT-OF-WAY
- REEVALUATION PREFERRED ALTERNATIVE
- - - REEVALUATION RIGHT-OF-WAY

**PARSONS**

**PBS&J**

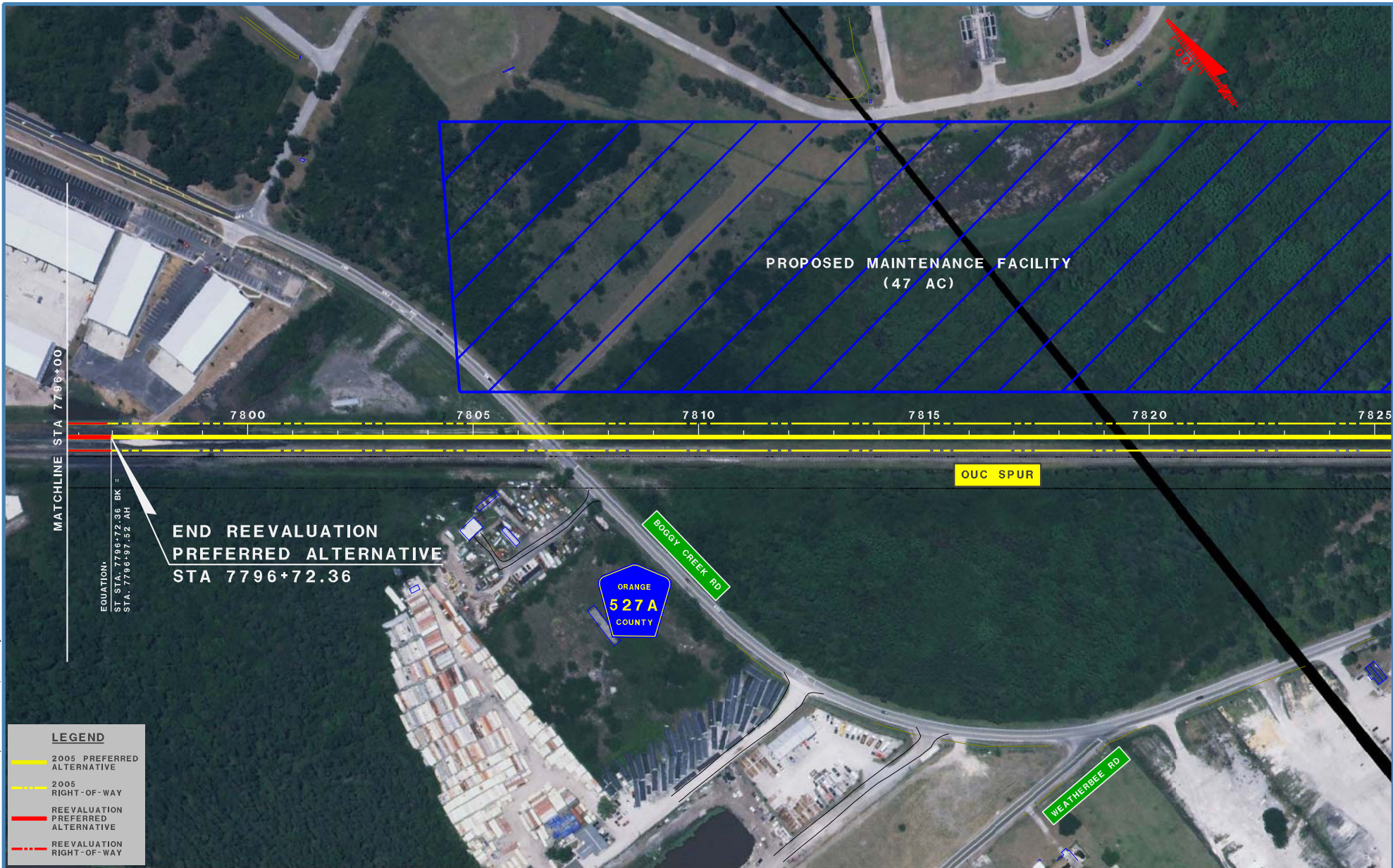
STATE OF FLORIDA  
DEPARTMENT OF TRANSPORTATION

FLORIDA HIGH SPEED RAIL  
REEVALUATION PLAN

SHEET NO.

245R





MATCHLINE STA 7796+00

EQUATION:  
 ST STA. 7796+72.36 BK =  
 STA. 7796+97.52 AH

END REEVALUATION  
 PREFERRED ALTERNATIVE  
 STA 7796+72.36

PROPOSED MAINTENANCE FACILITY  
 (47 AC)

OUC SPUR

ORANGE  
 527A  
 COUNTY

BOGGY CREEK RD

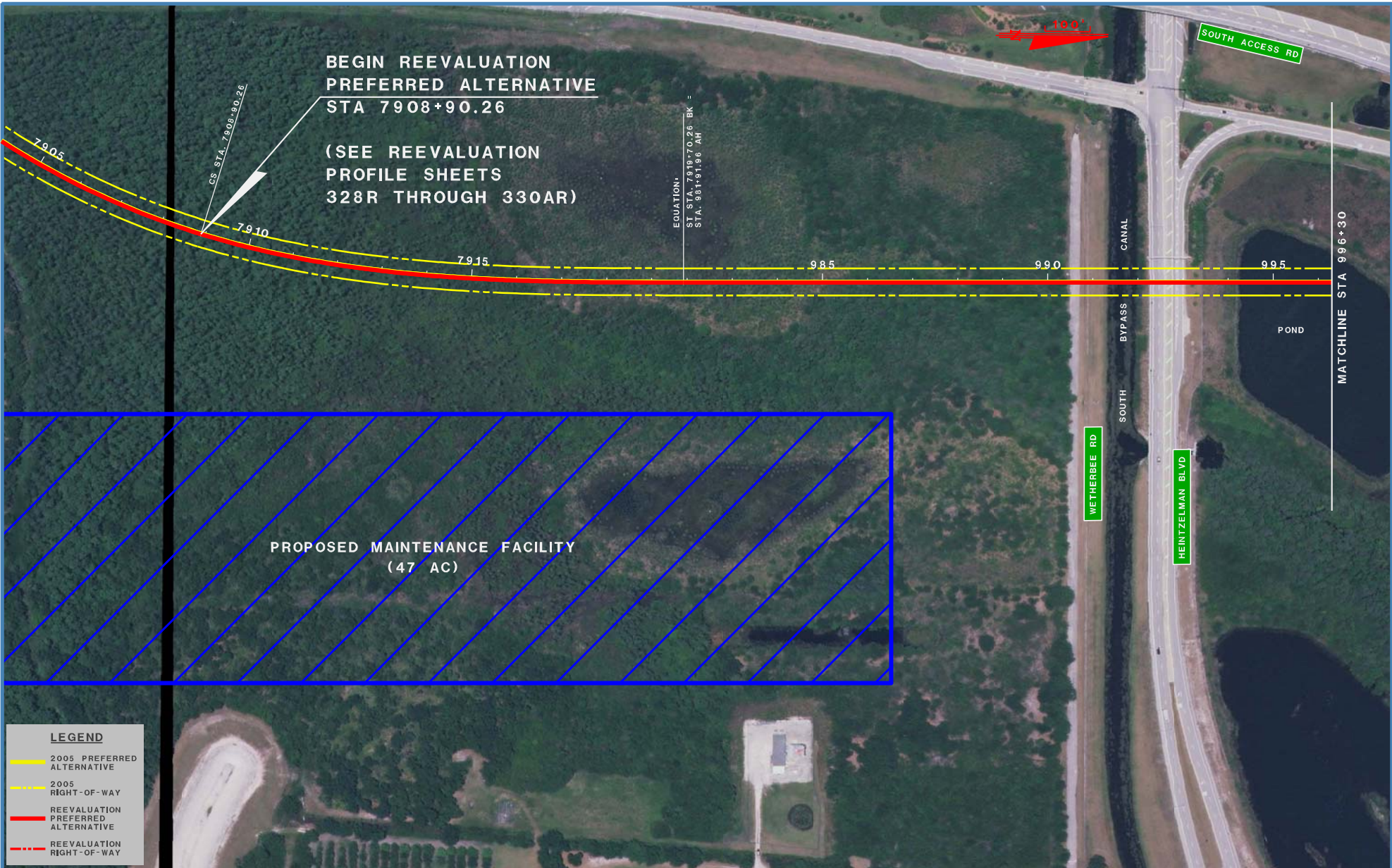
WEAT HERBEE RD

- LEGEND**
- 2005 PREFERRED ALTERNATIVE
  - - - 2005 RIGHT-OF-WAY
  - REEVALUATION PREFERRED ALTERNATIVE
  - - - REEVALUATION RIGHT-OF-WAY

9/30/2009 3:51:50 PM P:\644905\Railway\Reeval\_Sheets\246R\_2005.dgn

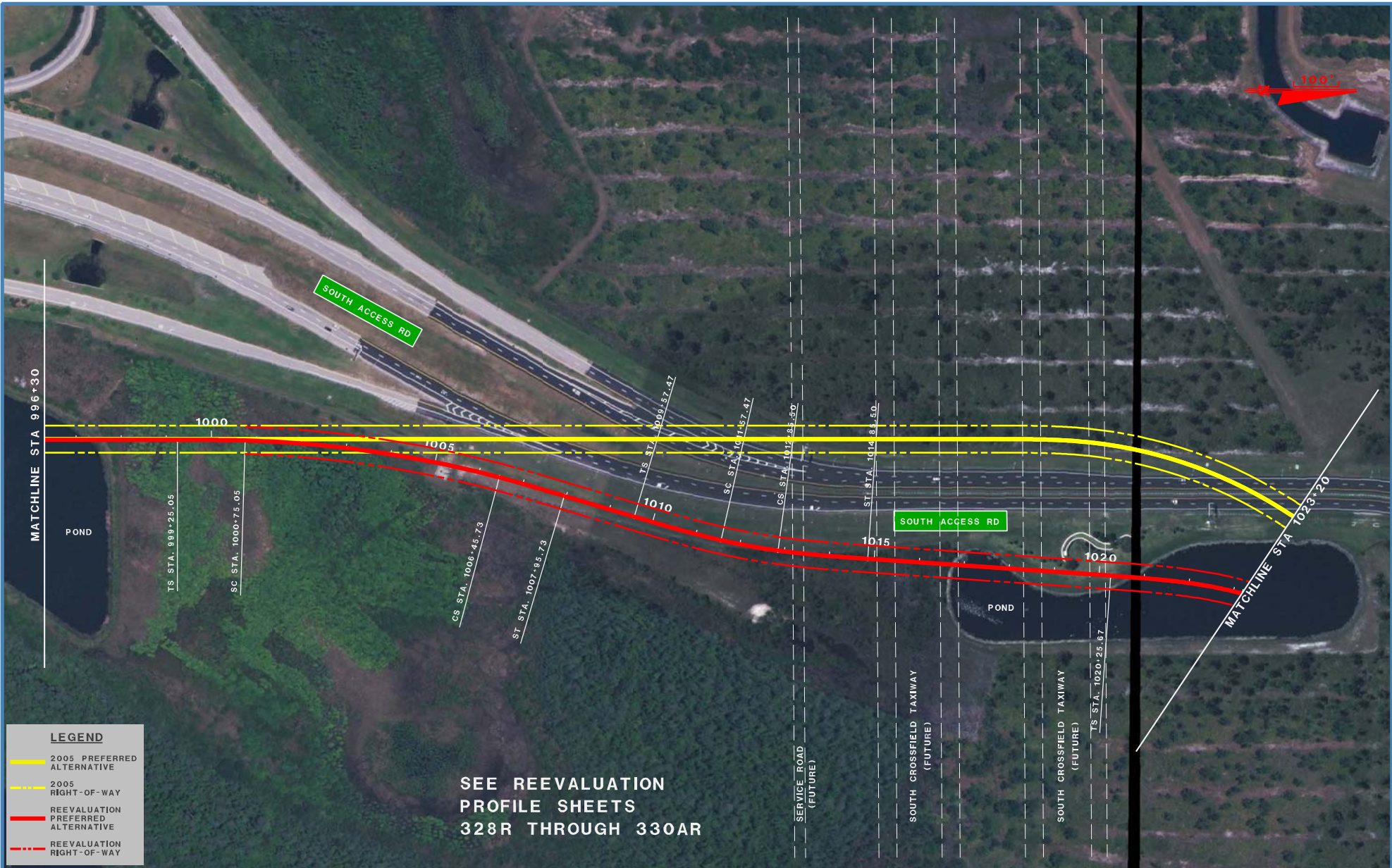


9/30/2009 3:54:20 PM P:\644905\Railway\General\_Sheets\97R\_Doc\1159.dgn





9/30/2009 3:56:44 PM P:\644905\Railway\Visual\_Sheets\08R1\Sheet\_V08R1\_D08r1109.dgn



**LEGEND**

- 2005 PREFERRED ALTERNATIVE
- - - 2005 RIGHT-OF-WAY
- REEVALUATION PREFERRED ALTERNATIVE
- - - REEVALUATION RIGHT-OF-WAY

SEE REEVALUATION  
PROFILE SHEETS  
328R THROUGH 330AR

**PARSONS**

**PBSJ**

STATE OF FLORIDA  
DEPARTMENT OF TRANSPORTATION

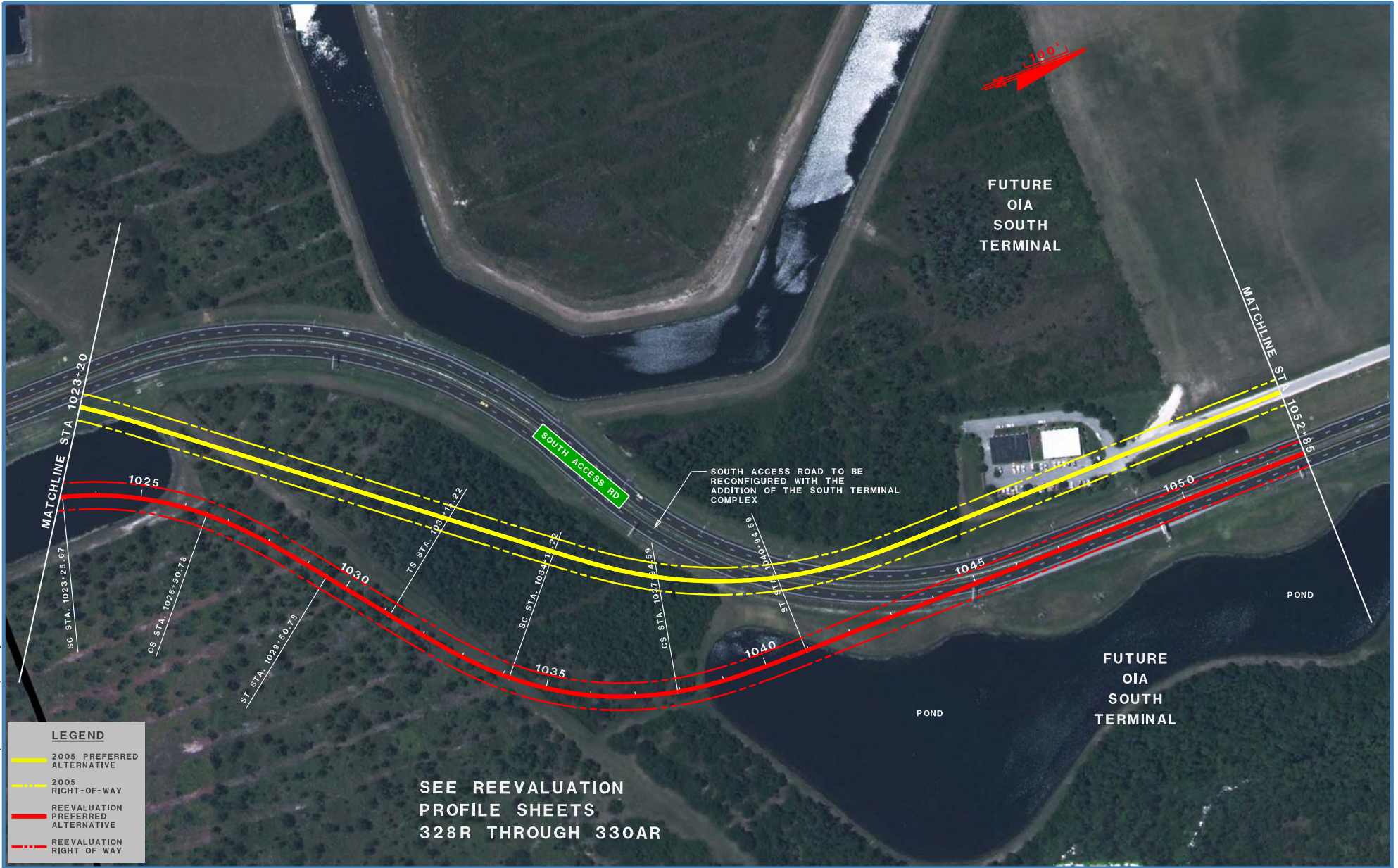
FLORIDA HIGH SPEED RAIL  
REEVALUATION PLAN

SHEET NO.

198 R



9/30/2009 3:58:05 PM P:\644905\Railway\Reeval\Sheet\Sheet\199R.dwg

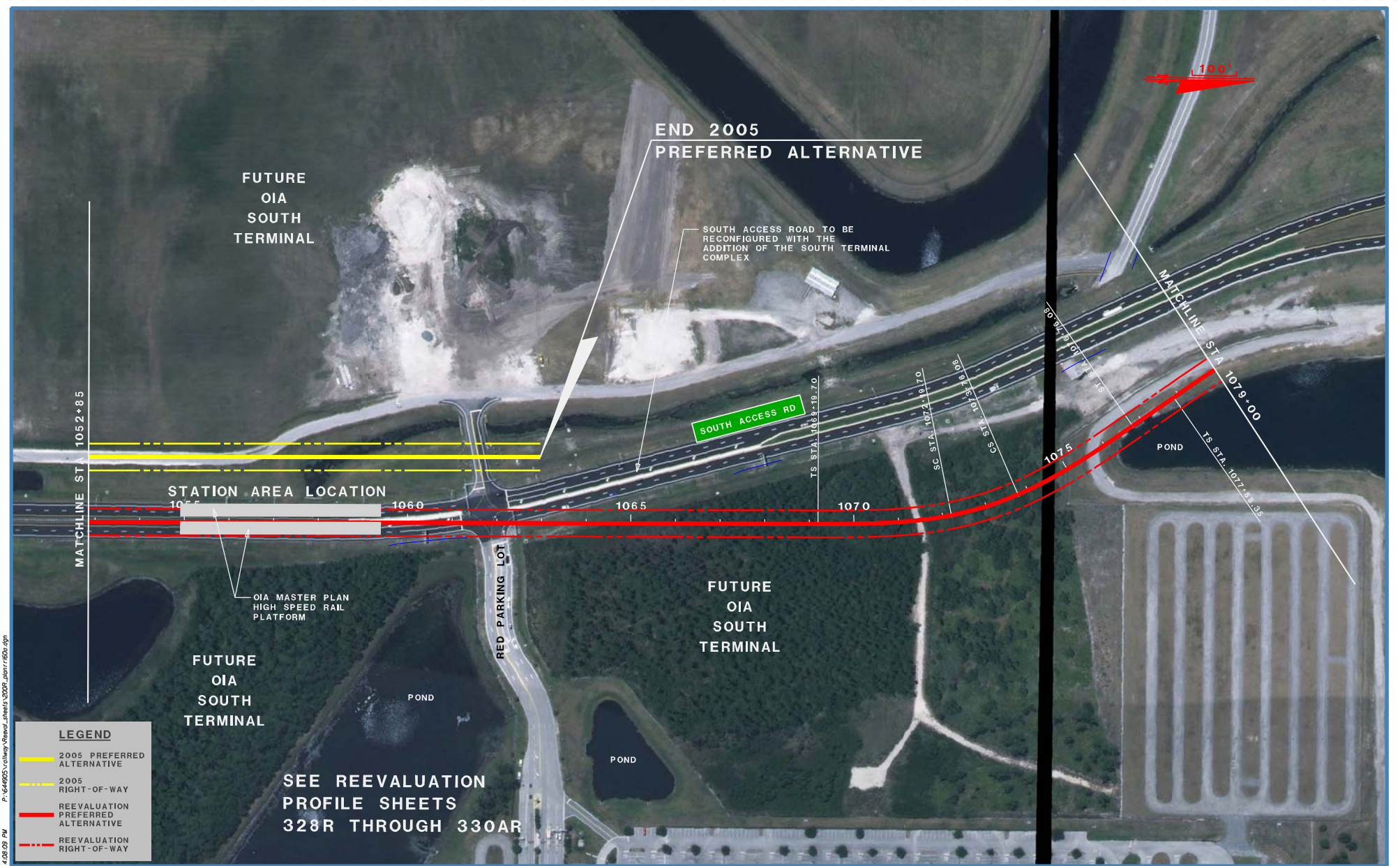


**LEGEND**

- 2005 PREFERRED ALTERNATIVE
- - - 2005 RIGHT-OF-WAY
- REEVALUATION PREFERRED ALTERNATIVE
- - - REEVALUATION RIGHT-OF-WAY

SEE REEVALUATION  
PROFILE SHEETS  
328R THROUGH 330AR

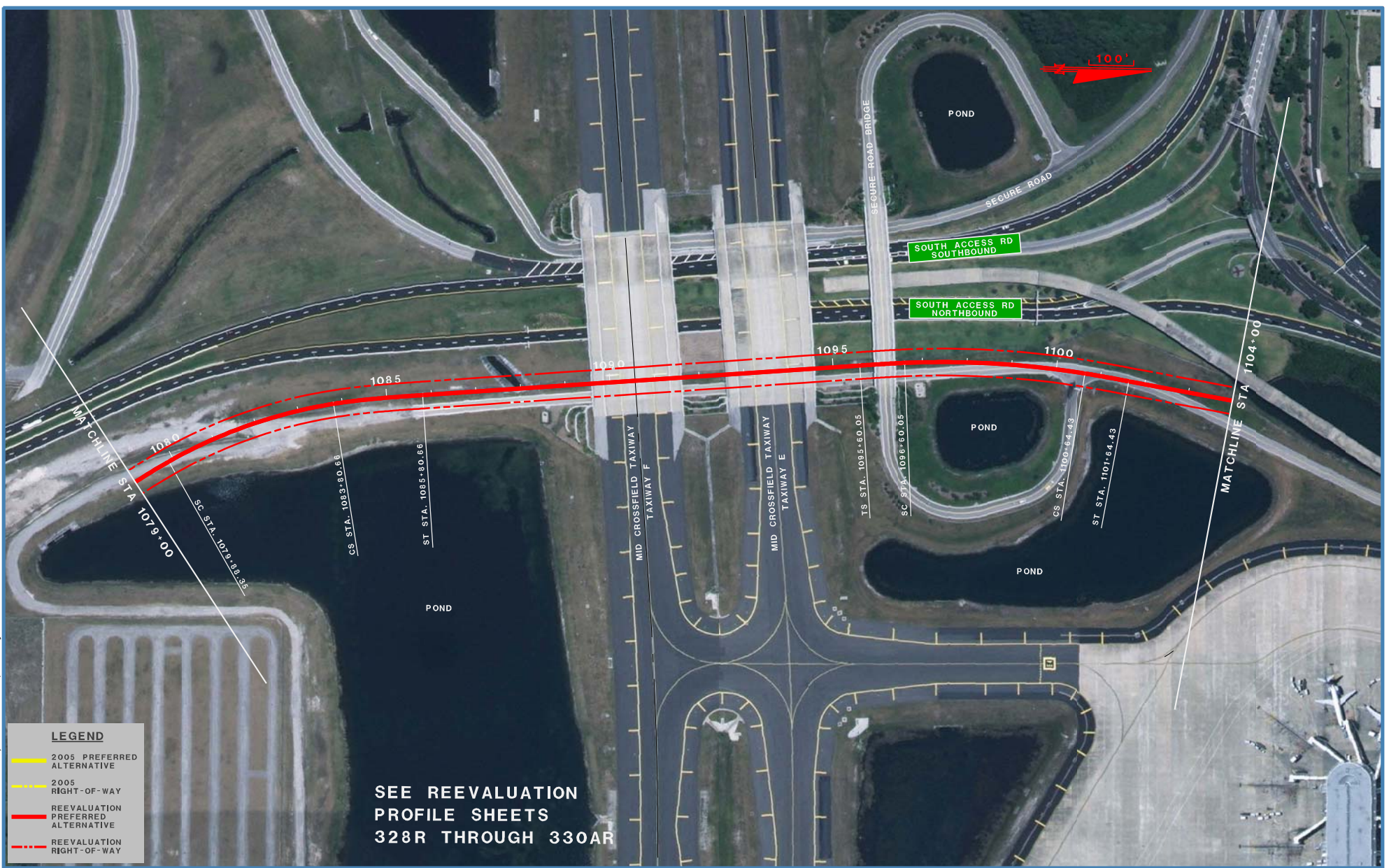




9/30/2009 4:00:09 PM P:\644605\Railway\Reeval\_Sheets\328R.dwg



9/30/2009 4:03:15 PM P:\644805\Railway\Reeval\_Sheets\200AR\_200R\_1600.dgn



SEE REEVALUATION  
 PROFILE SHEETS  
 328R THROUGH 330AR

LEGEND	
	2005 PREFERRED ALTERNATIVE
	2005 RIGHT-OF-WAY
	REEVALUATION PREFERRED ALTERNATIVE
	REEVALUATION RIGHT-OF-WAY



STATE OF FLORIDA  
 DEPARTMENT OF TRANSPORTATION

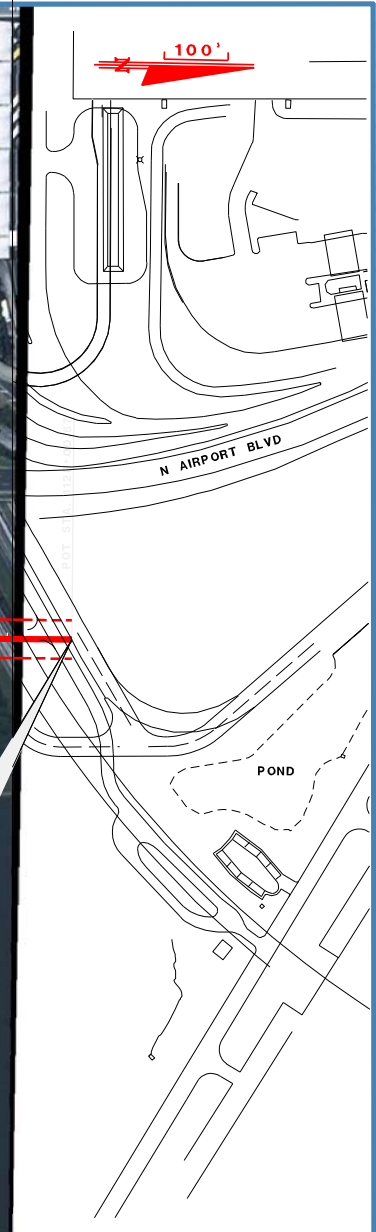
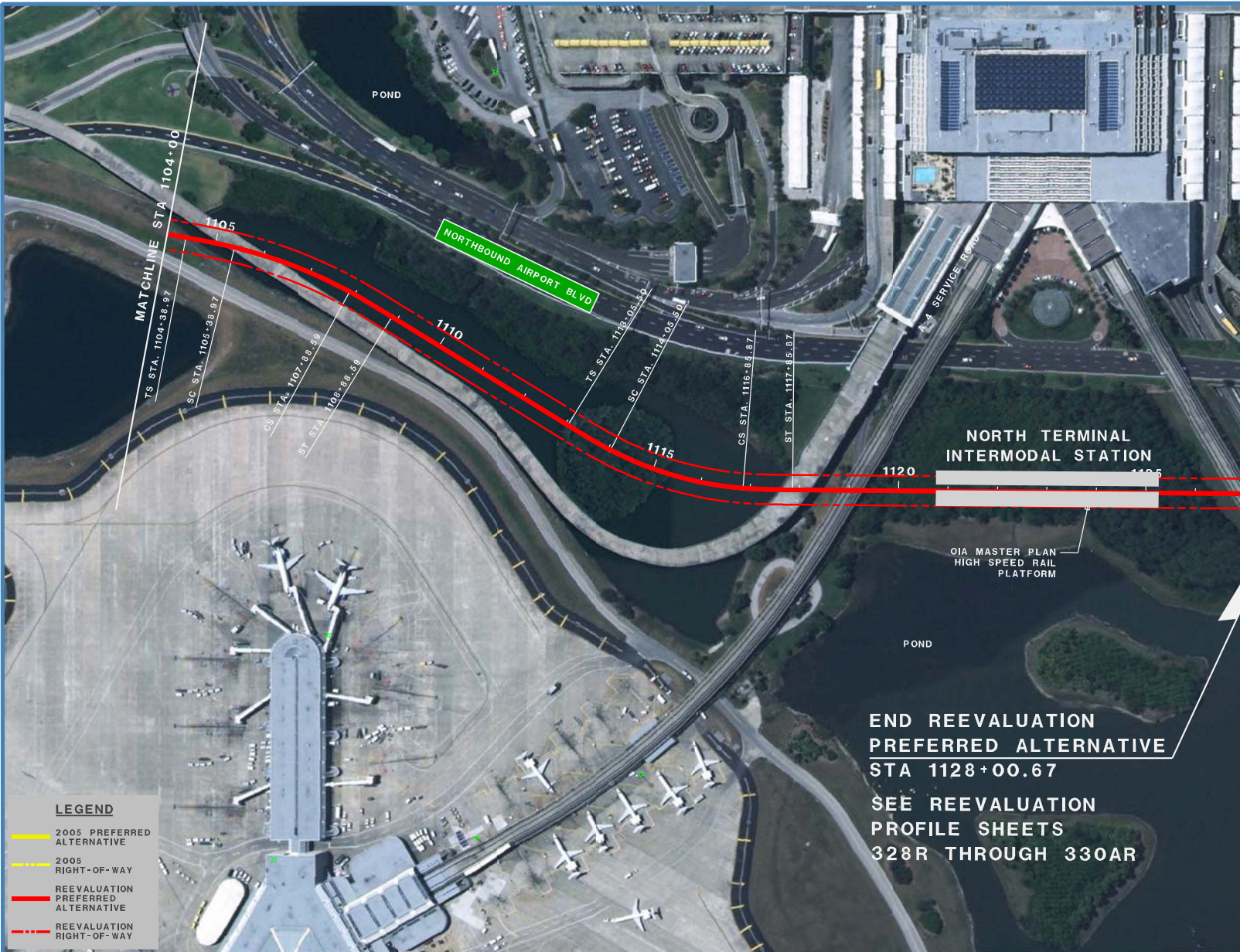
FLORIDA HIGH SPEED RAIL  
 REEVALUATION PLAN

SHEET NO.  
 200AR

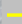
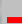
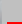


P:\644905\Railway\Reval\_Sheets\00089\_Station1600.dgn  
4/2/2012 PM

9/20/2009

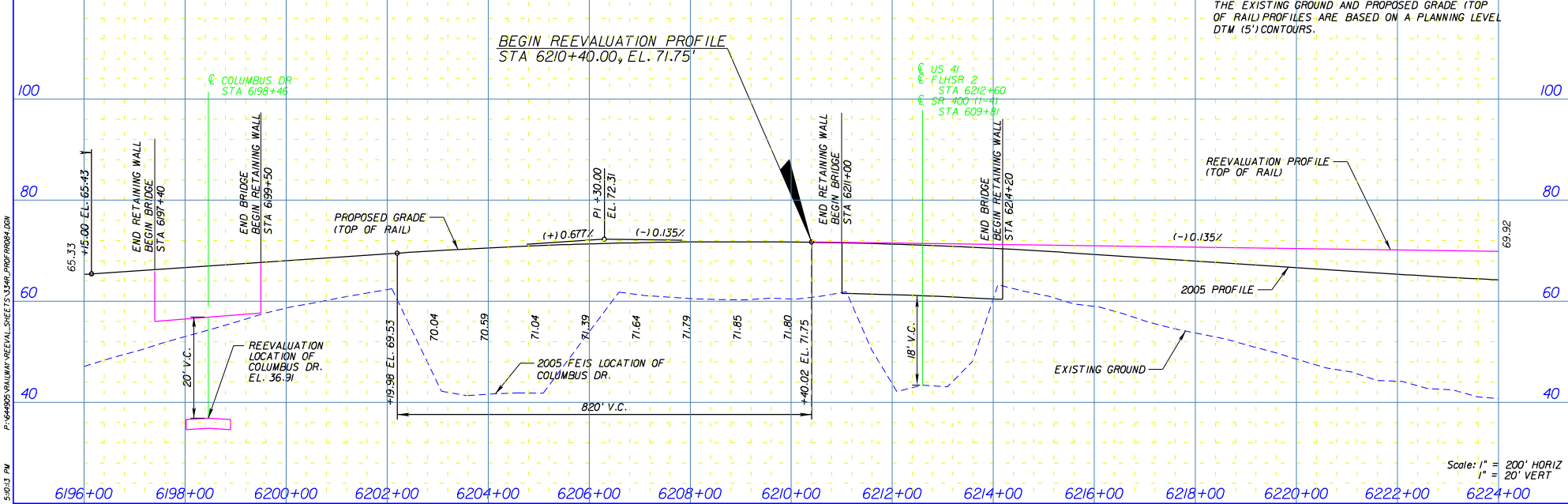
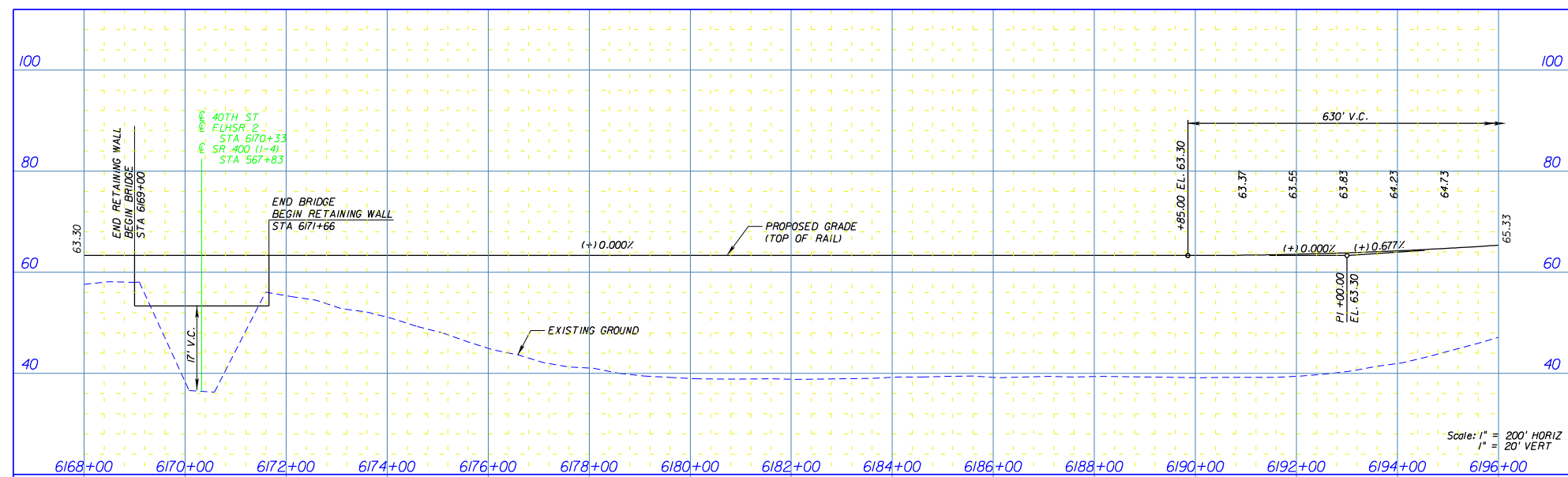


**LEGEND**

-  2005 PREFERRED ALTERNATIVE
-  2005 RIGHT-OF-WAY
-  REEVALUATION PREFERRED ALTERNATIVE
-  REEVALUATION RIGHT-OF-WAY

END REEVALUATION  
PREFERRED ALTERNATIVE  
STA 1128+00.67  
SEE REEVALUATION  
PROFILE SHEETS  
328R THROUGH 330AR



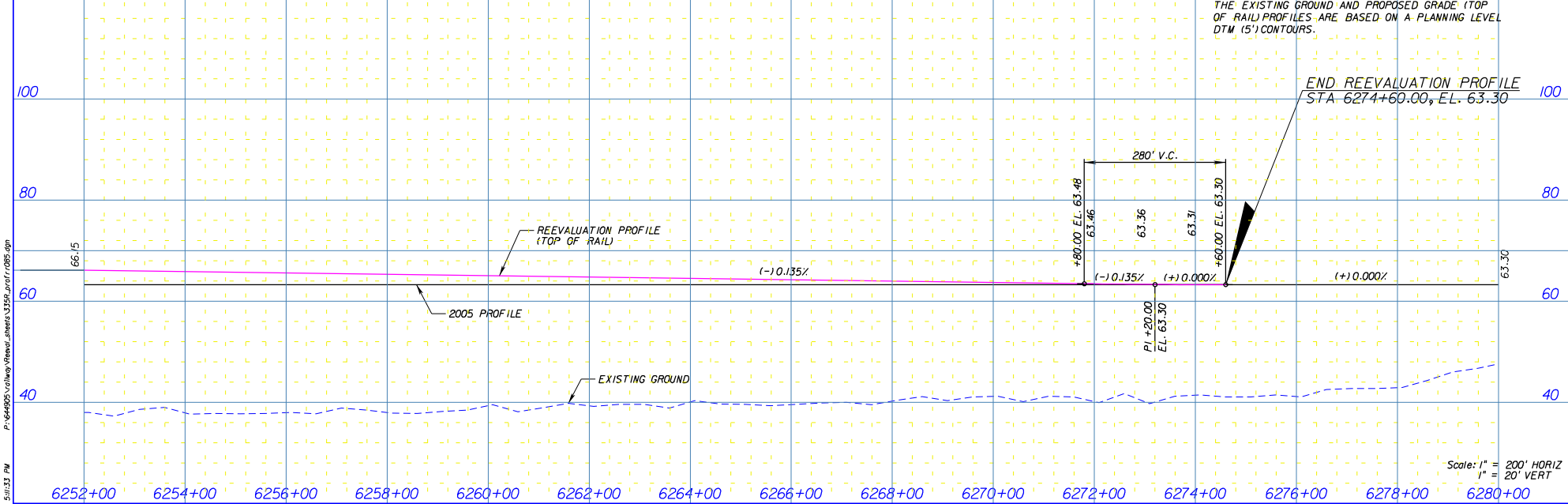
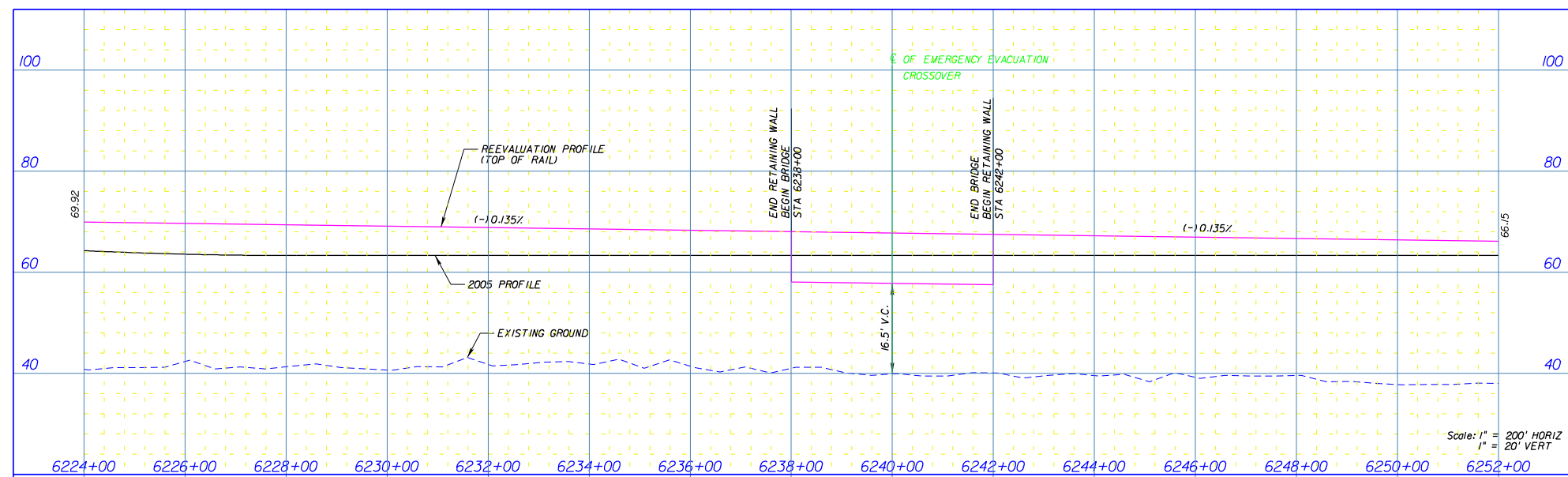


**STATE OF FLORIDA**  
**DEPARTMENT OF TRANSPORTATION**

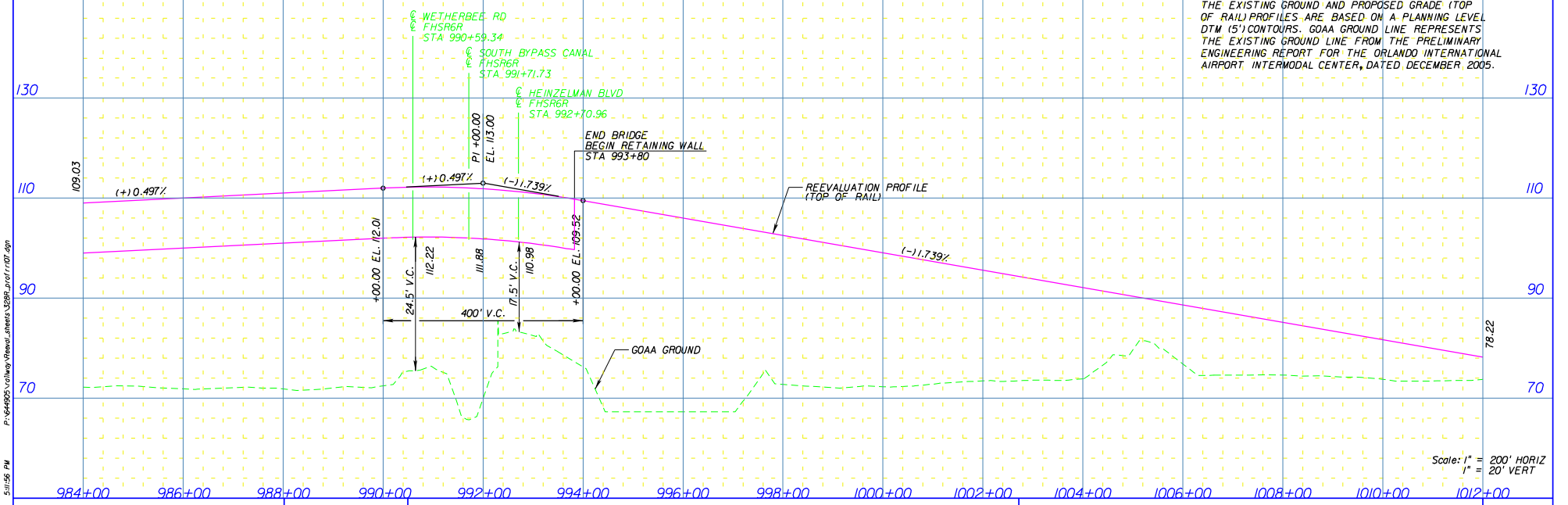
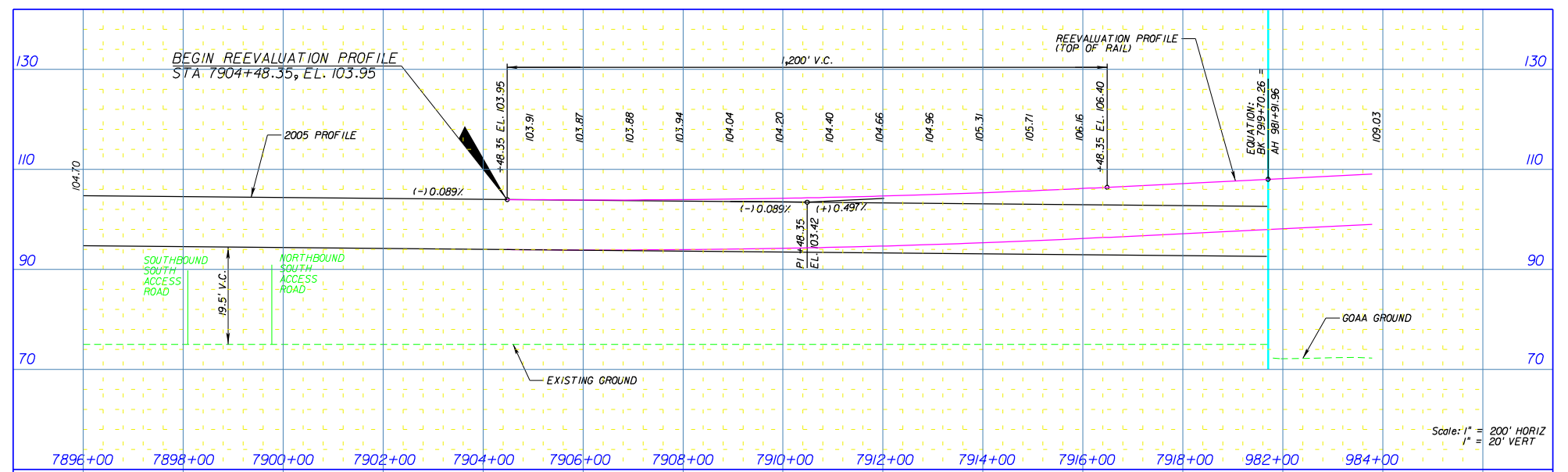
**FLORIDA HIGH SPEED RAIL**  
**REEVALUATION PROFILE**

SHEET NO.  
334R









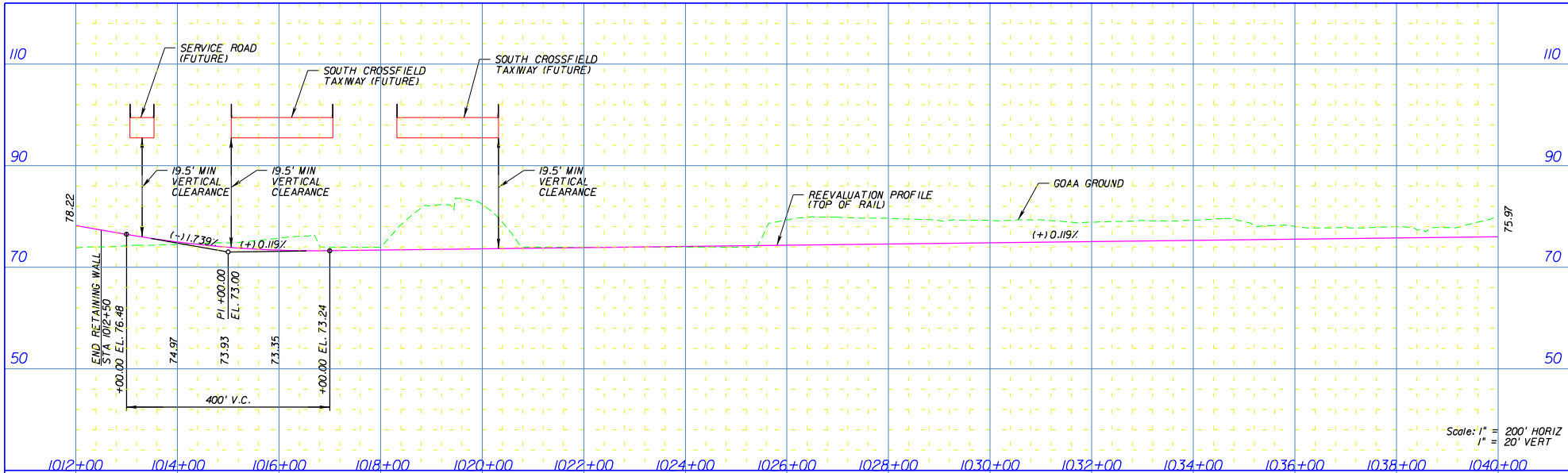
	<b>STATE OF FLORIDA</b> <b>DEPARTMENT OF TRANSPORTATION</b>		<b>FLORIDA HIGH SPEED RAIL</b> <b>REEVALUATION PROFILE</b>	SHEET NO. <b>328 R</b>

9:20:00 PM 5/11/06 P:\44905\HighSpeed\Drawings\328R.dwg

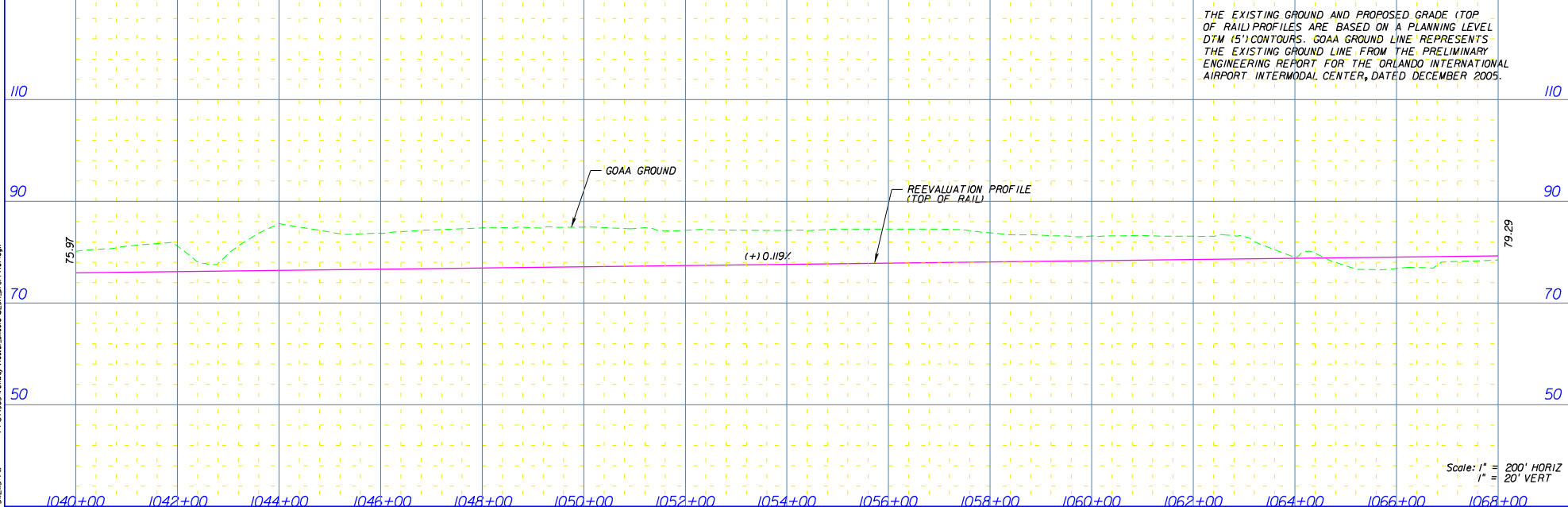
THE EXISTING GROUND AND PROPOSED GRADE (TOP OF RAIL) PROFILES ARE BASED ON A PLANNING LEVEL DTM (5' CONTOURS). GOAA GROUND LINE REPRESENTS THE EXISTING GROUND LINE FROM THE PRELIMINARY ENGINEERING REPORT FOR THE ORLANDO INTERNATIONAL AIRPORT INTERMODAL CENTER, DATED DECEMBER 2005.



9:20:09 PM 5/25/15 P:\44905\Highway\Reeval\Drawings\329R\_001.rvt.dwg



THE EXISTING GROUND AND PROPOSED GRADE (TOP OF RAIL) PROFILES ARE BASED ON A PLANNING LEVEL DTM (5') CONTOURS. GOAAA GROUND LINE REPRESENTS THE EXISTING GROUND LINE FROM THE PRELIMINARY ENGINEERING REPORT FOR THE ORLANDO INTERNATIONAL AIRPORT INTERMODAL CENTER, DATED DECEMBER 2005.



STATE OF FLORIDA  
DEPARTMENT OF TRANSPORTATION

FLORIDA HIGH SPEED RAIL  
REEVALUATION PROFILE

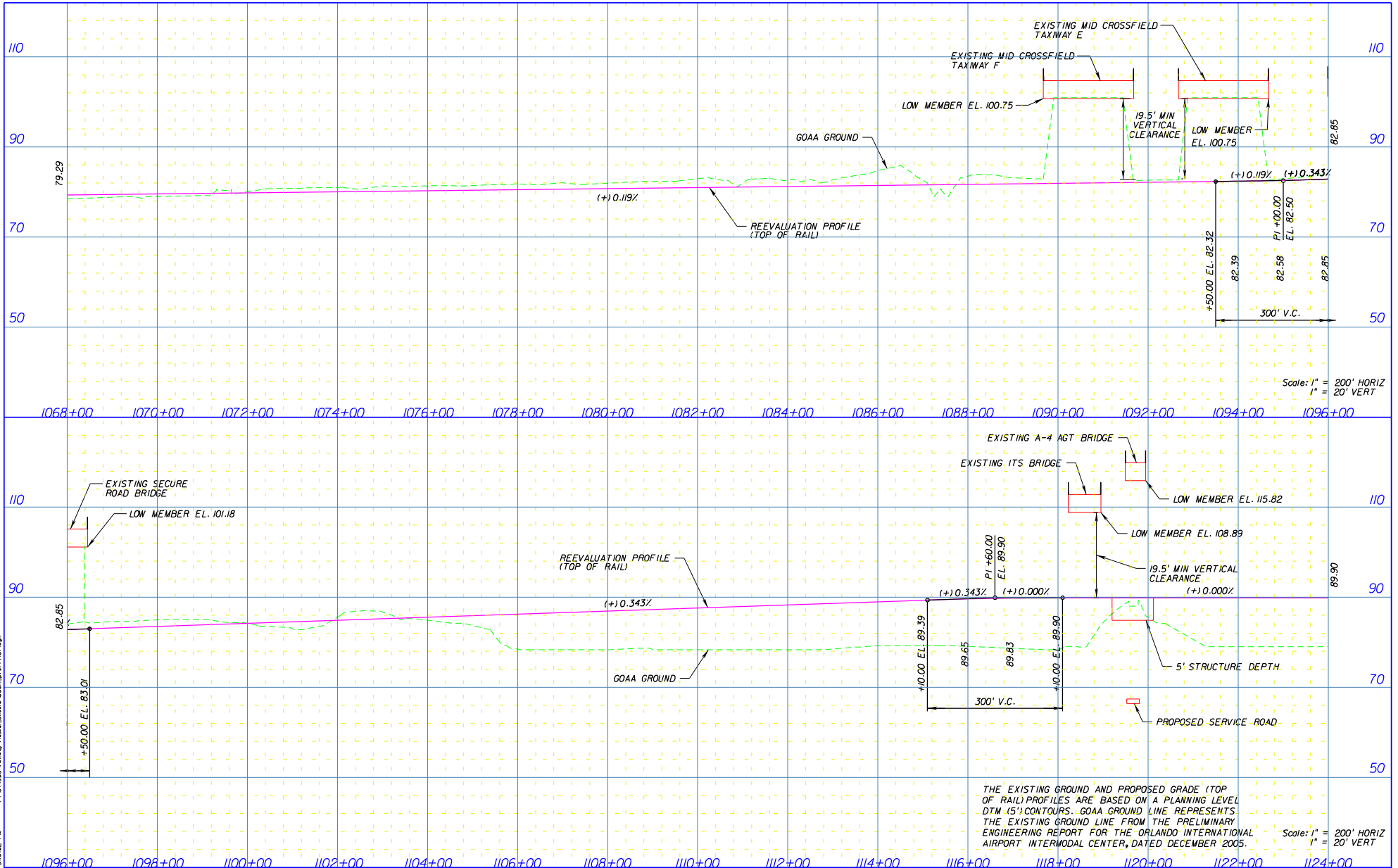
SHEET NO.  
329 R



9/20/2009

5:51:02 PM

P:\44905\Highway\Reeval\Drawings\330R\_dmf.rvt.dwg



Scale: 1" = 200' HORIZ  
1" = 20' VERT

THE EXISTING GROUND AND PROPOSED GRADE (TOP OF RAIL) PROFILES ARE BASED ON A PLANNING LEVEL DTM (5') CONTOURS. GOAA GROUND LINE REPRESENTS THE EXISTING GROUND LINE FROM THE PRELIMINARY ENGINEERING REPORT FOR THE ORLANDO INTERNATIONAL AIRPORT INTERMODAL CENTER, DATED DECEMBER 2005.

Scale: 1" = 200' HORIZ  
1" = 20' VERT



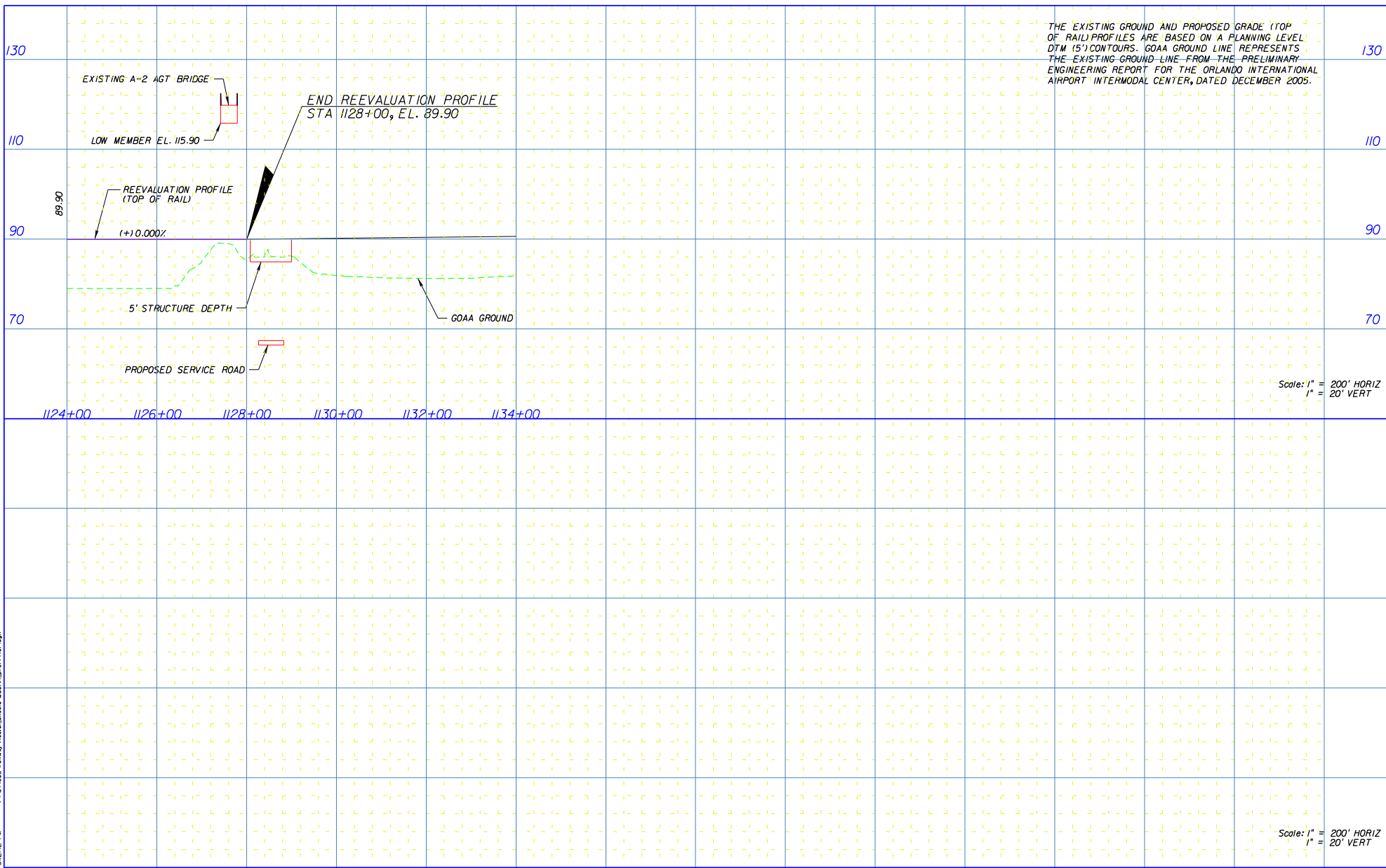
STATE OF FLORIDA  
DEPARTMENT OF TRANSPORTATION

FLORIDA HIGH SPEED RAIL  
REEVALUATION PROFILE

SHEET NO.  
330R



9/20/2009 5:52:42 PM P:\44905\Highway\Reeval\Drawings\330AR\_prof1.rvt.dgn



STATE OF FLORIDA  
DEPARTMENT OF TRANSPORTATION

FLORIDA HIGH SPEED RAIL  
REEVALUATION PROFILE

SHEET NO.  
330AR