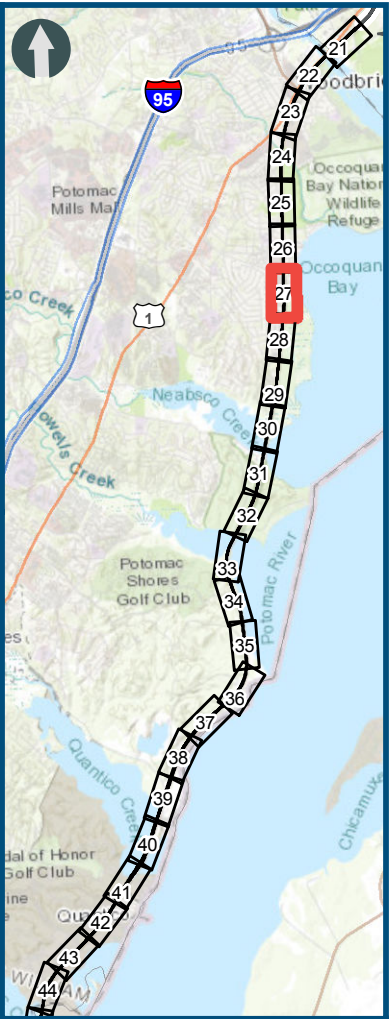
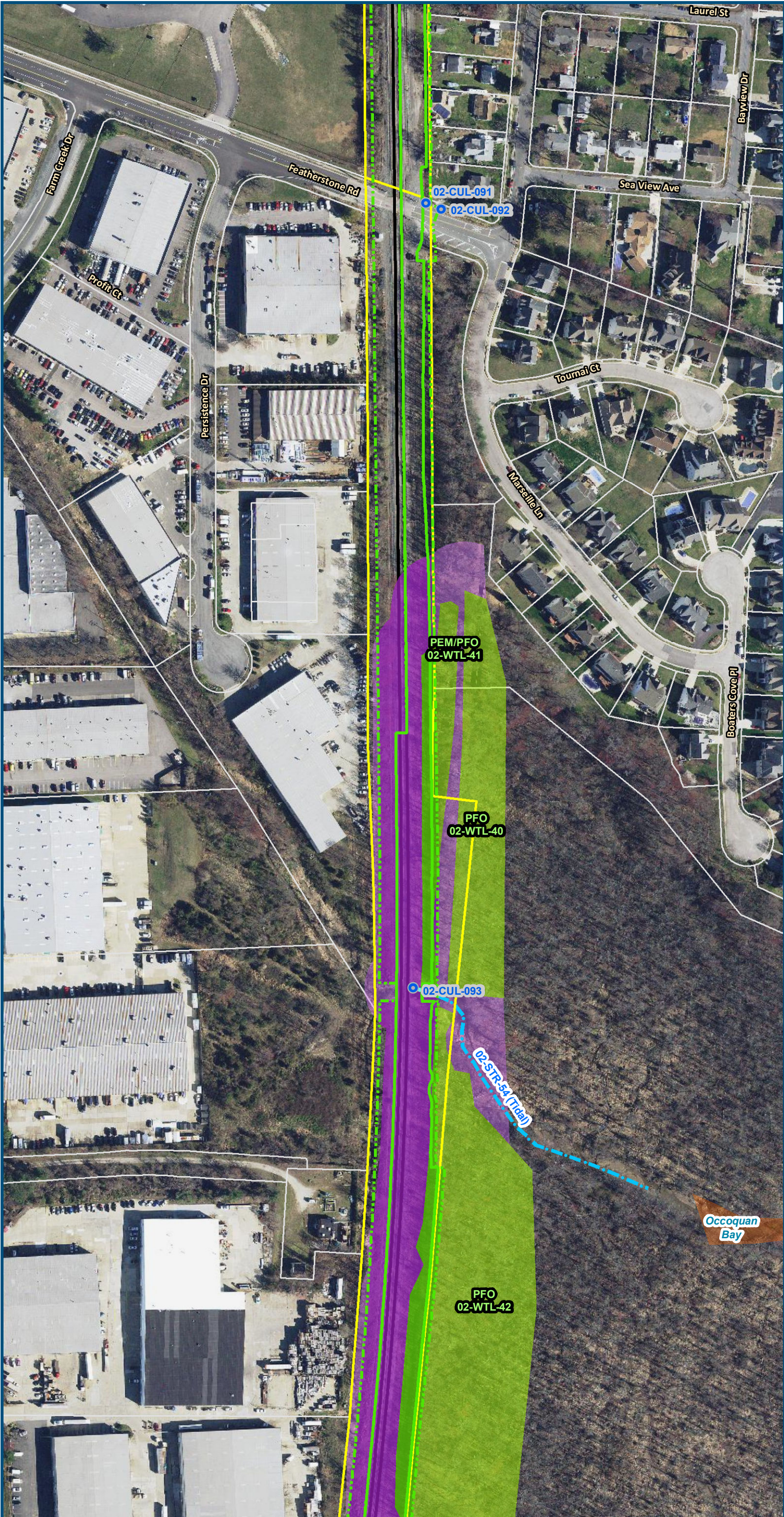


0 100 200  
Feet  
1 inch = 200 feet  
@ 11 x 17 inches  
Projection: Lambert Conformal Conic  
State Plane Virginia North FIPS 4501 Feet  
North American Datum of 1983  
Imagery/Basemap Source: 2015-2017 VGIN  
Aerial Imagery; ESRI World Transportation

- Legend**
- Permanent Limits of Disturbance
  - Temporary Limits of Disturbance
  - CSXT Mileposts
  - Track - Existing
  - Existing Stations
  - Culverts
  - Delineated Stream Impacts
  - Delineated Streams
  - Major River Impacts
  - Waterbodies
  - Delineated Wetlands
  - Delineated Wetland Impacts
  - Resource Protection Areas
  - Resource Protection Area Impacts
  - Impaired Waters
  - CSXT ROW (County Parcel Data)
  - City/County Parcels
  - City/County Boundary
- (Virginia Department of Environmental Quality)

**Figure M-1**  
**Preferred Alternative –**  
**Potential Impacts to**  
**Wetlands and Streams**  
**Sheet 26 of 217**





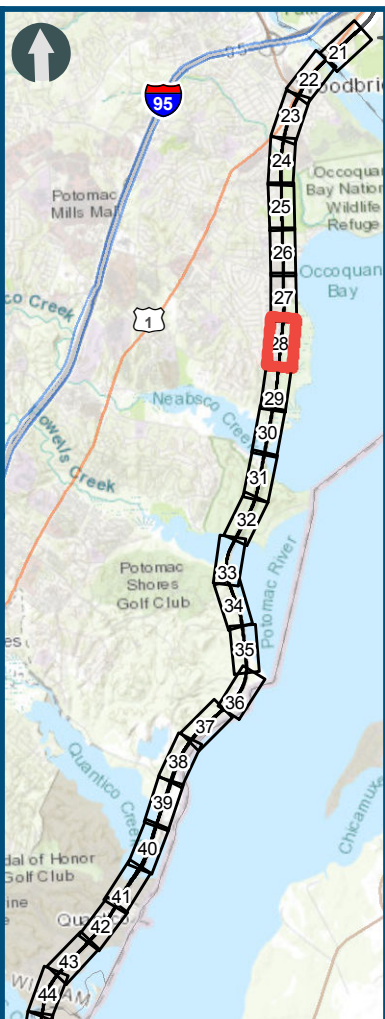
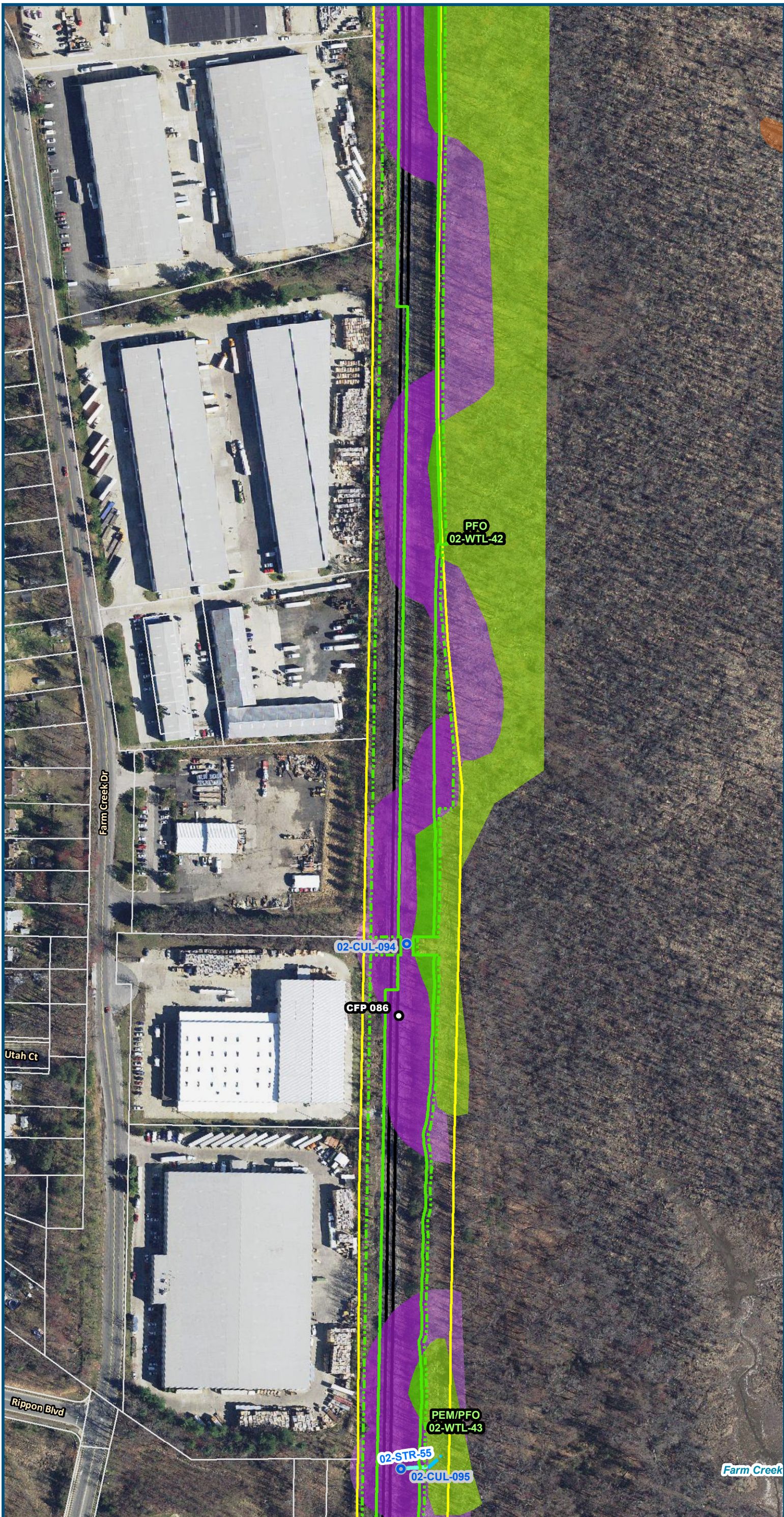
0 100 200  
Feet  
1 inch = 200 feet  
@ 11 x 17 inches  
Projection: Lambert Conformal Conic  
State Plane Virginia North FIPS 4501 Feet  
North American Datum of 1983  
Imagery/Basemap Source: 2015-2017 VGIN  
Aerial Imagery; ESRI World Transportation

- Legend**
- Permanent Limits of Disturbance
  - Temporary Limits of Disturbance
  - CSXT Mileposts
  - Track - Existing
  - Existing Stations
  - Culverts
  - Delineated Stream Impacts
  - Delineated Streams
  - Major River Impacts
  - Waterbodies
  - Delineated Wetlands
  - Delineated Wetland Impacts
  - Resource Protection Areas
  - Resource Protection Area Impacts
  - Impaired Waters (Virginia Department of Environmental Quality)
  - CSXT ROW (County Parcel Data)
  - City/County Parcels
  - City/County Boundary

**Figure M-1**  
**Preferred Alternative –**  
**Potential Impacts to**  
**Wetlands and Streams**  
**Sheet 27 of 217**



\\dismain\GIS\_DATA\GIS\Projects\011545\_VA Dept of Rail-Public Transportation\0239056\_RAPS-4\MapDev-Concept\Eng\map\_docs\mxd\FEIS\Map\_M-1\_WetlandsStreams\_11x17.mxd | Last Updated: 12.06.2018



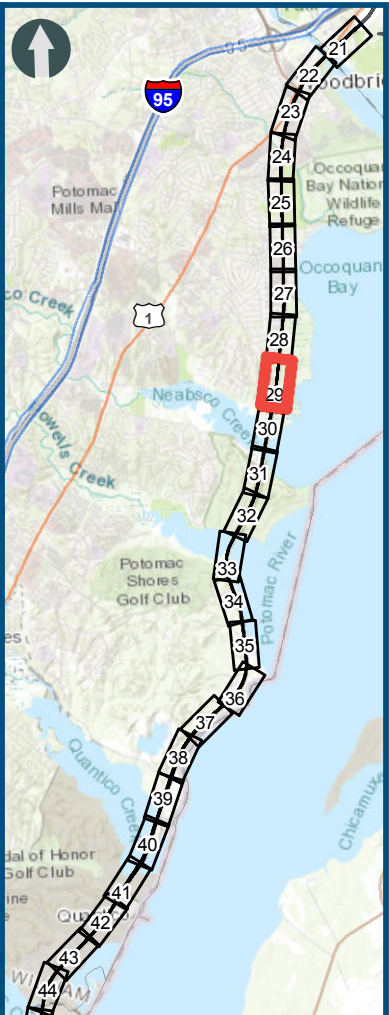
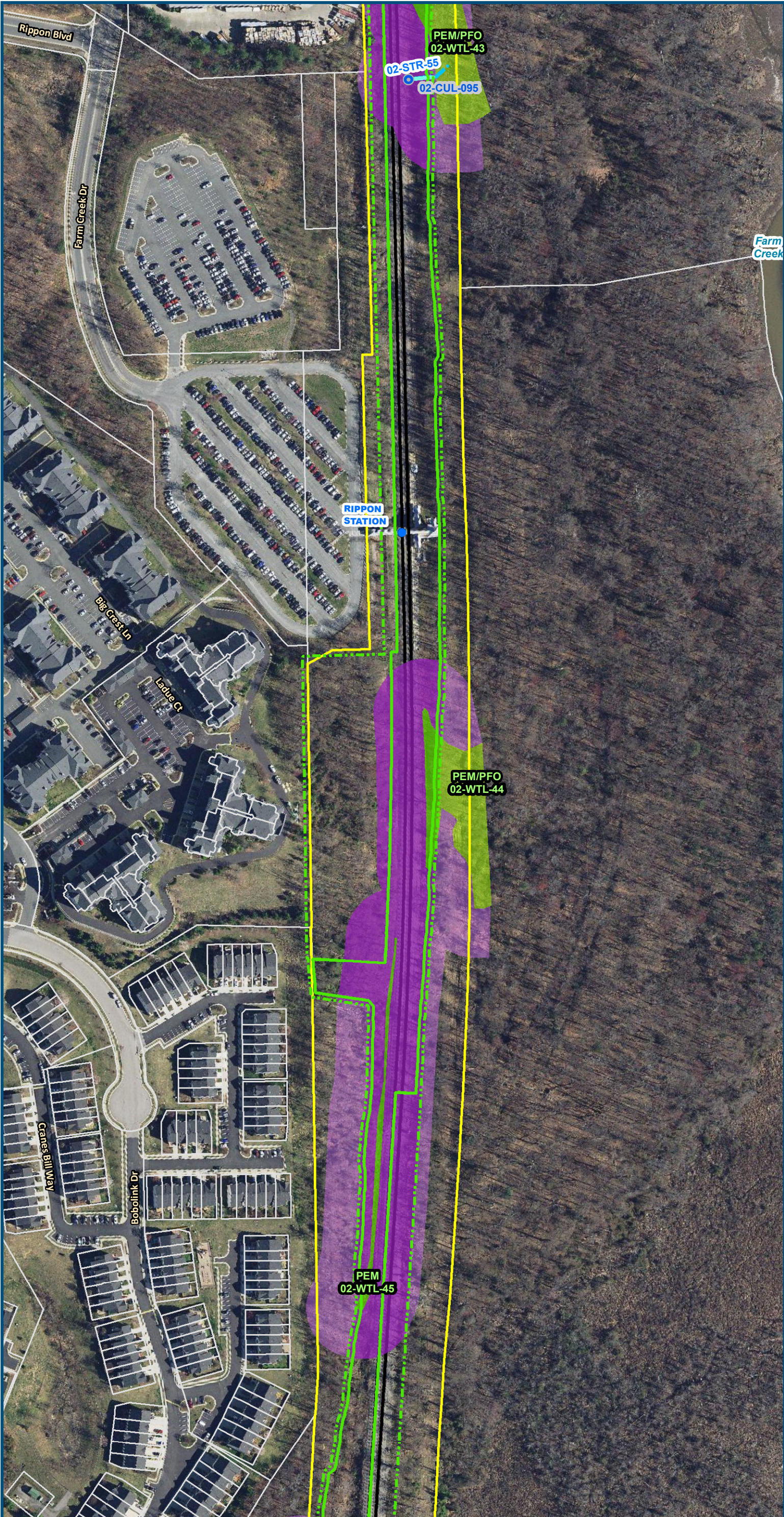
0 100 200  
Feet  
1 inch = 200 feet  
@ 11 x 17 inches  
Projection: Lambert Conformal Conic  
State Plane Virginia North FIPS 4501 Feet  
North American Datum of 1983  
Imagery/Basemap Source: 2015-2017 VGIN  
Aerial Imagery; ESRI World Transportation

#### Legend

- Permanent Limits of Disturbance
- Temporary Limits of Disturbance
- CSXT Mileposts
- Track - Existing
- Existing Stations
- Culverts
- Delineated Stream Impacts
- Delineated Streams
- Major River Impacts
- Waterbodies
- Delineated Wetlands
- Delineated Wetland Impacts
- Resource Protection Areas
- Resource Protection Area Impacts
- Impaired Waters (Virginia Department of Environmental Quality)
- CSXT ROW (County Parcel Data)
- City/County Parcels
- City/County Boundary

**Figure M-1**  
**Preferred Alternative –**  
**Potential Impacts to**  
**Wetlands and Streams**  
**Sheet 28 of 217**





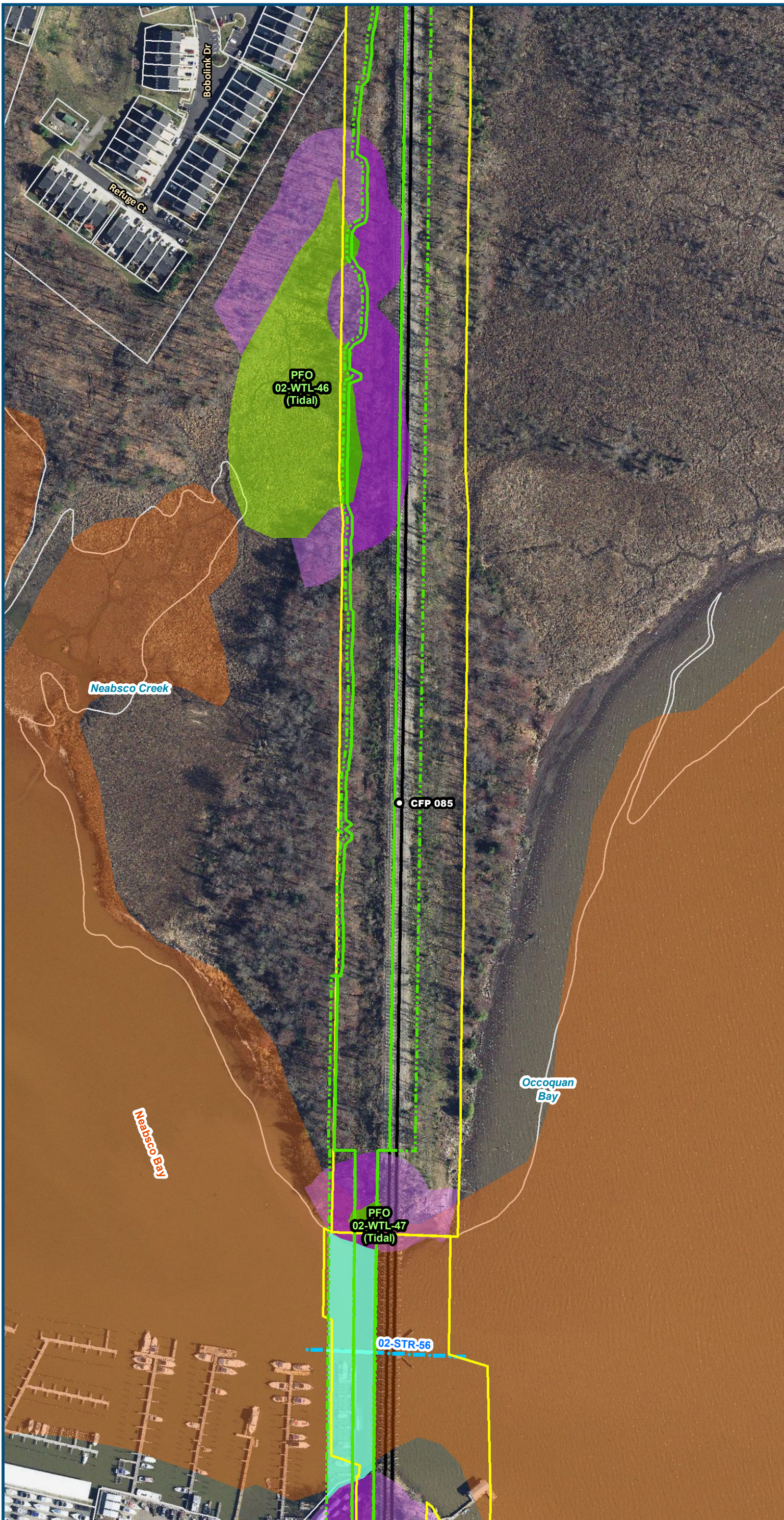
0 100 200  
Feet  
1 inch = 200 feet  
@ 11 x 17 inches  
Projection: Lambert Conformal Conic  
State Plane Virginia North FIPS 4501 Feet  
North American Datum of 1983  
Imagery/Basemap Source: 2015-2017 VGIN  
Aerial Imagery; ESRI World Transportation

- Legend**
- Permanent Limits of Disturbance
  - Temporary Limits of Disturbance
  - CSXT Mileposts
  - Track - Existing
  - Existing Stations
  - Culverts
  - Delineated Stream Impacts
  - Delineated Streams
  - Major River Impacts
  - Waterbodies
  - Delineated Wetlands
  - Delineated Wetland Impacts
  - Resource Protection Areas
  - Resource Protection Area Impacts
  - Impaired Waters (Virginia Department of Environmental Quality)
  - CSXT ROW (County Parcel Data)
  - City/County Parcels
  - City/County Boundary

**Figure M-1**  
**Preferred Alternative –**  
**Potential Impacts to**  
**Wetlands and Streams**  
**Sheet 29 of 217**



\\dismain\GIS\_DATA\GIS\Projects\011545\_VA Dept of Rail\Public Transportation\0239056\_RAPS-4\MapDev-Concept\Eng\map\_docs\mxd\FEIS\Map\_WFEIS\_M-1\_WetlandsStreams\_11x17.mxd | Last Updated: 12.06.2018



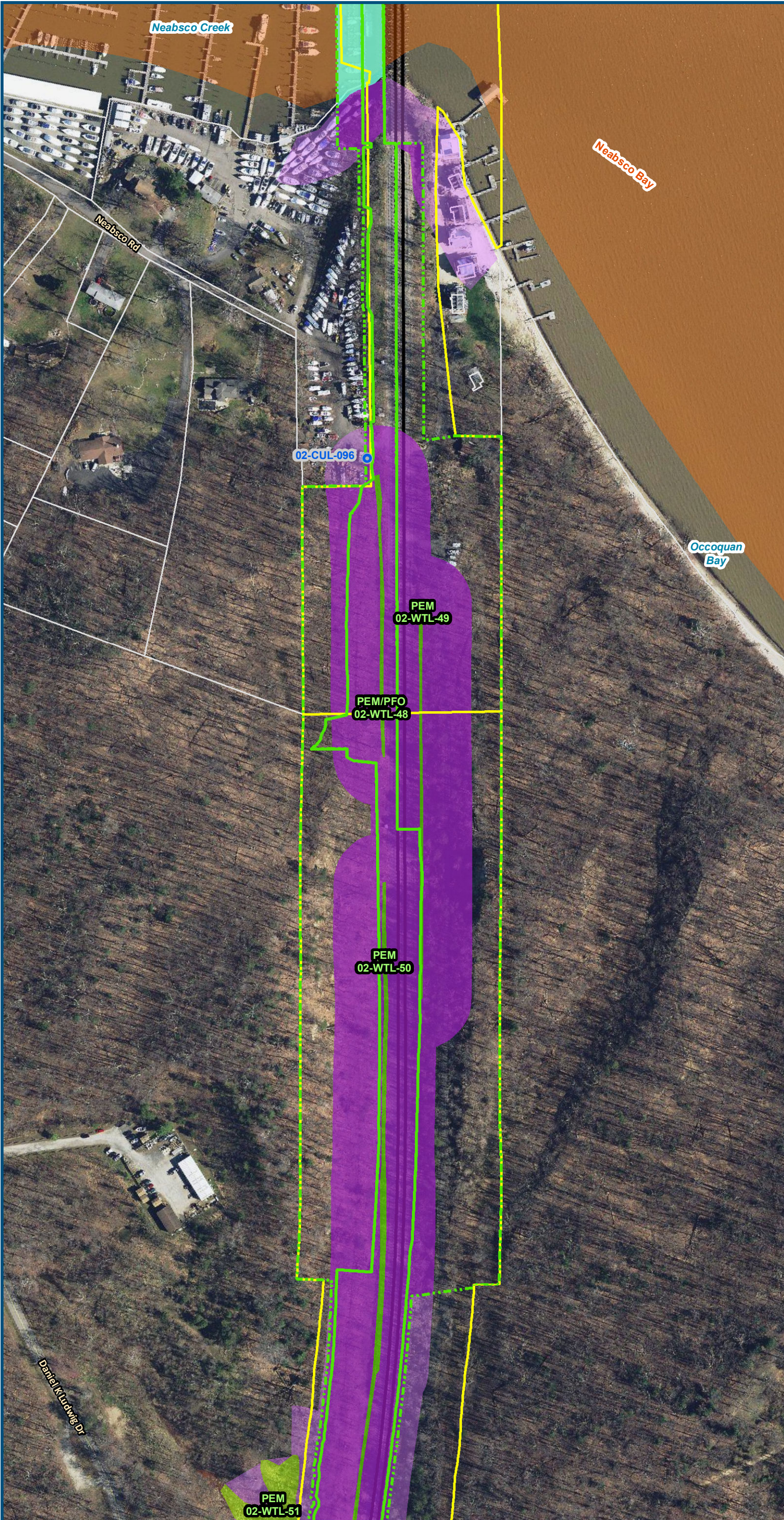
0 100 200  
Feet  
1 inch = 200 feet  
@ 11 x 17 inches  
Projection: Lambert Conformal Conic  
State Plane Virginia North FIPS 4501 Feet  
North American Datum of 1983  
Imagery/Basemap Source: 2015-2017 VGIN  
Aerial Imagery; ESRI World Transportation

#### Legend

- Permanent Limits of Disturbance
- Temporary Limits of Disturbance
- CSXT Mileposts
- Track - Existing
- Existing Stations
- Culverts
- Delineated Stream Impacts
- Delineated Streams
- Major River Impacts
- Waterbodies
- Delineated Wetlands
- Delineated Wetland Impacts
- Resource Protection Areas
- Resource Protection Area Impacts
- Impaired Waters (Virginia Department of Environmental Quality)
- CSXT ROW (County Parcel Data)
- City/County Parcels
- City/County Boundary

**Figure M-1**  
**Preferred Alternative –**  
**Potential Impacts to**  
**Wetlands and Streams**  
**Sheet 30 of 217**





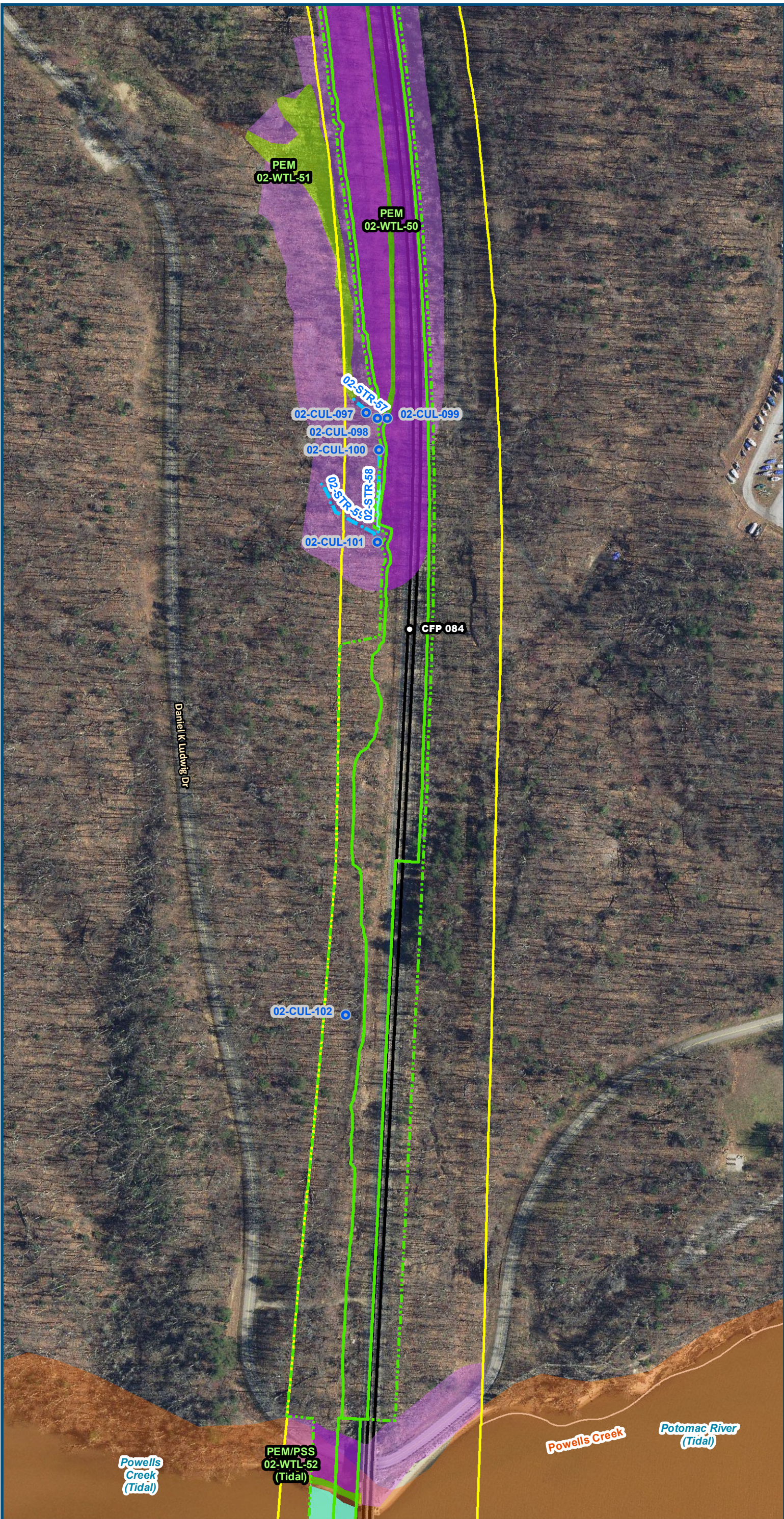
0 100 200  
Feet  
1 inch = 200 feet  
@ 11 x 17 inches  
Projection: Lambert Conformal Conic  
State Plane Virginia North FIPS 4501 Feet  
North American Datum of 1983  
Imagery/Basemap Source: 2015-2017 VGIN  
Aerial Imagery; ESRI World Transportation

- Legend**
- Permanent Limits of Disturbance
  - Temporary Limits of Disturbance
  - CSXT Mileposts
  - Track - Existing
  - Existing Stations
  - Culverts
  - Delineated Stream Impacts
  - Delineated Streams
  - Major River Impacts
  - Waterbodies
  - Delineated Wetlands
  - Delineated Wetland Impacts
  - Resource Protection Areas
  - Resource Protection Area Impacts
  - Impaired Waters (Virginia Department of Environmental Quality)
  - CSXT ROW (County Parcel Data)
  - City/County Parcels
  - City/County Boundary

**Figure M-1**  
**Preferred Alternative –**  
**Potential Impacts to**  
**Wetlands and Streams**  
**Sheet 31 of 217**



\\dlmain\GIS\_DATA\GIS\Projects\011545\_VA\DeptofRails-PublicTransportation\0239056\_RAPS-4\AIDev-ConceptEng\map\_docs\mxd\FEIS\Map\_M-1\_WetlandsStreams\_11x17.mxd | Last Updated: 12.06.2018



0 100 200  
Feet  
1 inch = 200 feet  
@ 11 x 17 inches  
Projection: Lambert Conformal Conic  
State Plane Virginia North FIPS 4501 Feet  
North American Datum of 1983  
Imagery/Basemap Source: 2015-2017 VGIN  
Aerial Imagery; ESRI World Transportation

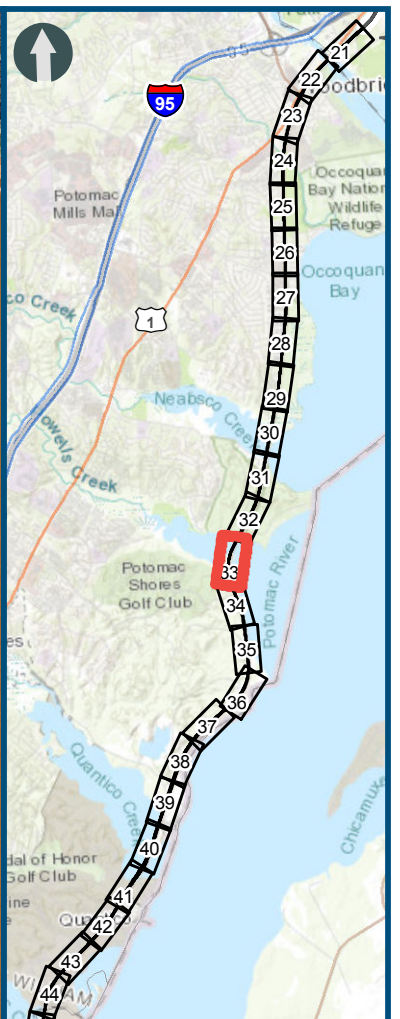
#### Legend

- Permanent Limits of Disturbance
- Temporary Limits of Disturbance
- CSXT Mileposts
- Track - Existing
- Existing Stations
- Culverts
- Delineated Stream Impacts
- Delineated Streams
- Major River Impacts
- Waterbodies
- Delineated Wetlands
- Delineated Wetland Impacts
- Resource Protection Areas
- Resource Protection Area Impacts
- Impaired Waters (Virginia Department of Environmental Quality)
- CSXT ROW (County Parcel Data)
- City/County Parcels
- City/County Boundary

**Figure M-1**  
**Preferred Alternative –**  
**Potential Impacts to**  
**Wetlands and Streams**  
**Sheet 32 of 217**



\\dlsmain\GIS\_DATA\GIS\Projects\011545\_VA Dept of Rail\Public Transportation\0239056\_RAPS-4\MapDev-Concept\Eng\map\_docs\mxd\FEIS\Map\_M-1\_WetlandsStreams\_11x17.mxd | Last Updated: 12.06.2018



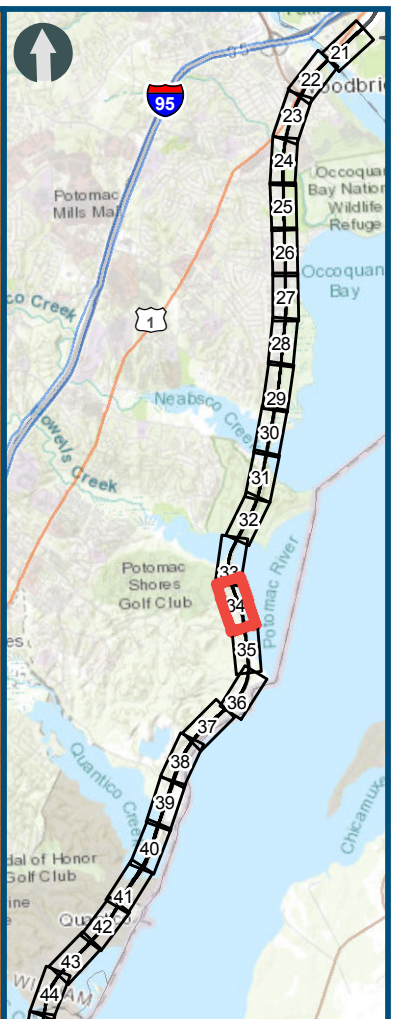
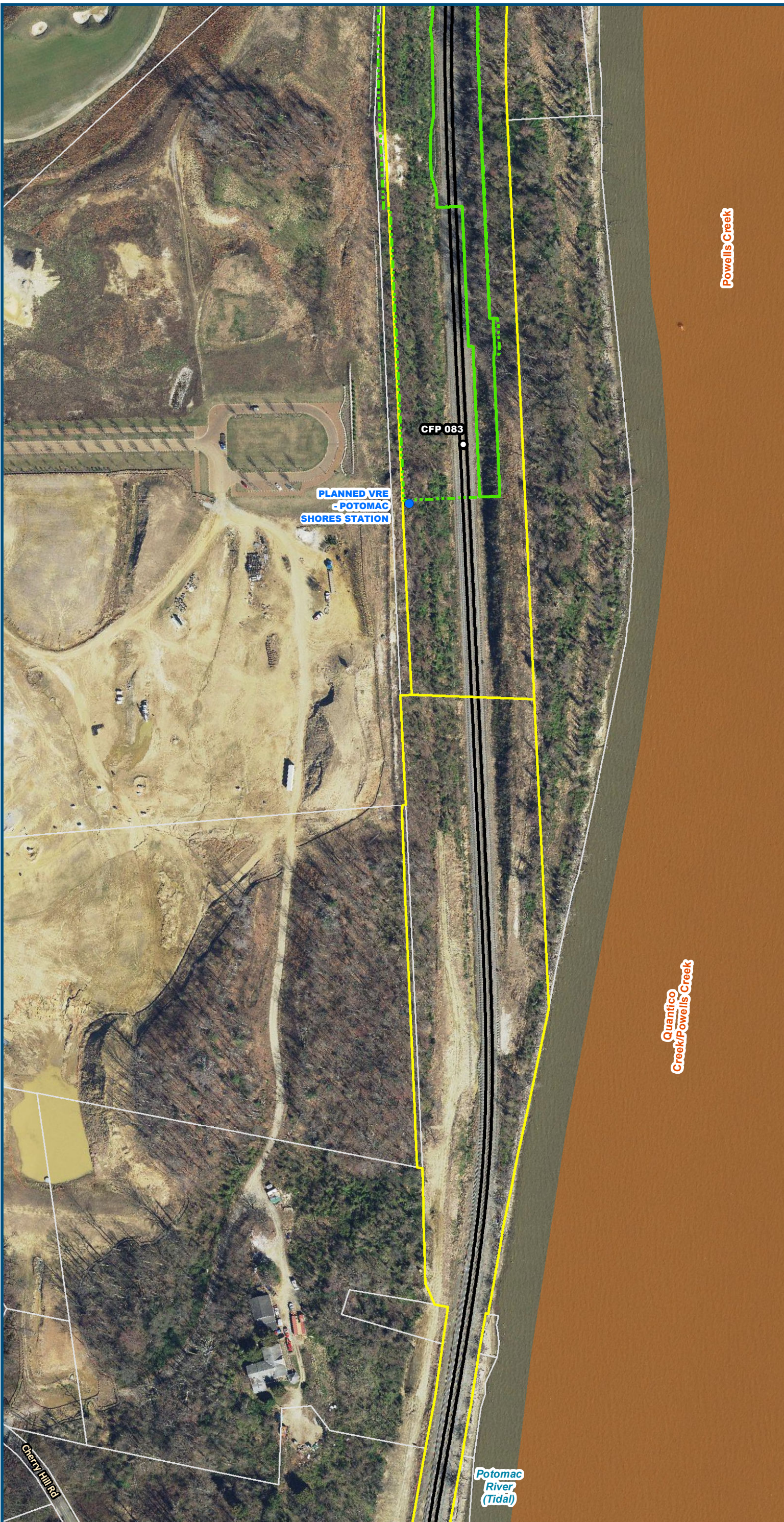
0 100 200  
Feet  
1 inch = 200 feet  
@ 11 x 17 inches  
Projection: Lambert Conformal Conic  
State Plane Virginia North FIPS 4501 Feet  
North American Datum of 1983  
Imagery/Basemap Source: 2015-2017 VGIN  
Aerial Imagery; ESRI World Transportation

- Legend**
- Permanent Limits of Disturbance
  - Temporary Limits of Disturbance
  - CSXT Mileposts
  - Track - Existing
  - Existing Stations
  - Culverts
  - Delinedated Stream Impacts
  - Delinedated Streams
  - Major River Impacts
  - Waterbodies
  - Delinedated Wetlands
  - Delinedated Wetland Impacts
  - Resource Protection Areas
  - Resource Protection Area Impacts
  - Impaired Waters (Virginia Department of Environmental Quality)
  - CSXT ROW (County Parcel Data)
  - City/County Parcels
  - City/County Boundary

**Figure M-1**  
**Preferred Alternative –**  
**Potential Impacts to**  
**Wetlands and Streams**  
**Sheet 33 of 217**



\\dlsmain\GIS\_DATA\GIS\Projects\011545\_VA Dept of Rail\Public Transportation\0239056\_RAPS-4\AI\Dev-Concept\Eng\map\_docs\mxd\FEIS\Map\_M-1\_WetlandsStreams\_11x17.mxd | Last Updated: 12.06.2018



0 100 200  
Feet  
1 inch = 200 feet  
@ 11 x 17 inches  
Projection: Lambert Conformal Conic  
State Plane Virginia North FIPS 4501 Feet  
North American Datum of 1983  
Imagery/Basemap Source: 2015-2017 VGIN  
Aerial Imagery; ESRI World Transportation

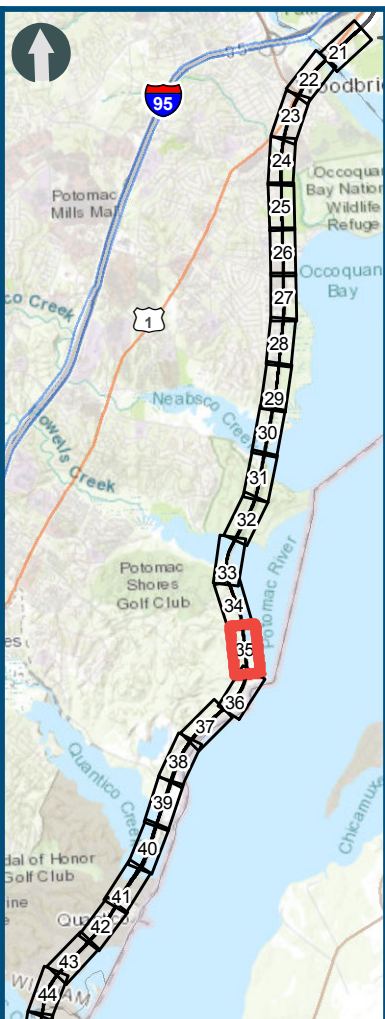
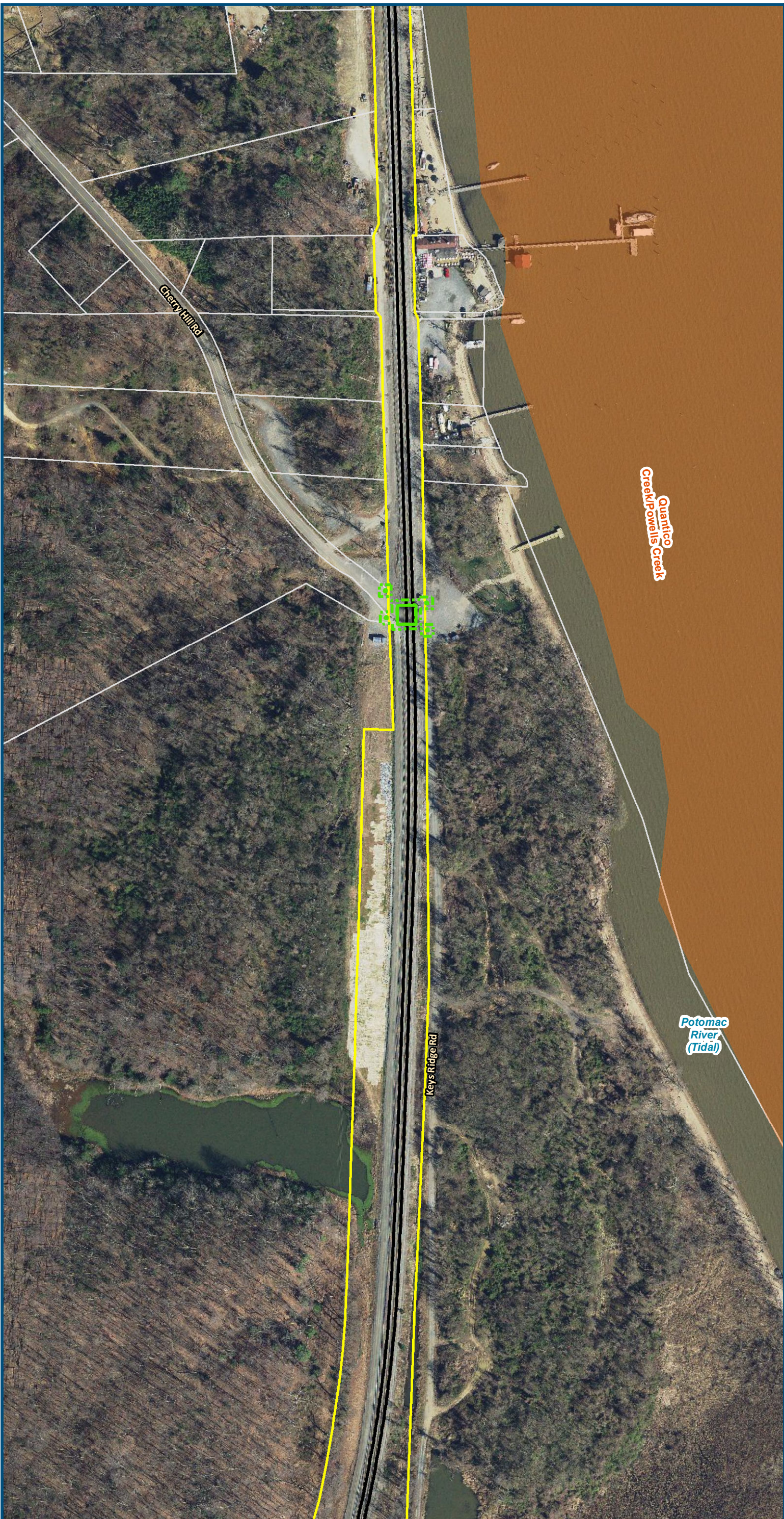
#### Legend

- Permanent Limits of Disturbance
- Temporary Limits of Disturbance
- CSXT Mileposts
- Track - Existing
- Existing Stations
- Culverts
- Delineated Stream Impacts
- Delineated Streams
- Major River Impacts
- Waterbodies
- Delineated Wetlands
- Delineated Wetland Impacts
- Resource Protection Areas
- Resource Protection Area Impacts
- Impaired Waters (Virginia Department of Environmental Quality)
- CSXT ROW (County Parcel Data)
- City/County Parcels
- City/County Boundary

**Figure M-1**  
**Preferred Alternative –**  
**Potential Impacts to**  
**Wetlands and Streams**  
**Sheet 34 of 217**



\\dlsmain\GIS\_DATA\GIS\Projects\011545\_VA Dept of Rails-Public\Transportation\0239056\_RAPS-4\AI\Dev-Concept\Eng\map\_docs\mxd\FEIS\Map\_M-1\_WetlandsStreams\_11x17.mxd | Last Updated: 12.06.2018



0 100 200  
Feet  
1 inch = 200 feet  
@ 11 x 17 inches  
Projection: Lambert Conformal Conic  
State Plane Virginia North FIPS 4501 Feet  
North American Datum of 1983  
Imagery/Basemap Source: 2015-2017 VGIN  
Aerial Imagery; ESRI World Transportation

#### Legend

- Permanent Limits of Disturbance
- Temporary Limits of Disturbance
- CSXT Mileposts
- Track - Existing
- Existing Stations
- Culverts
- Delineated Stream Impacts
- Delineated Streams
- Major River Impacts
- Waterbodies
- Delineated Wetlands
- Delineated Wetland Impacts
- Resource Protection Areas
- Resource Protection Area Impacts
- Impaired Waters (Virginia Department of Environmental Quality)
- CSXT ROW (County Parcel Data)
- City/County Parcels
- City/County Boundary

**Figure M-1**  
**Preferred Alternative –**  
**Potential Impacts to**  
**Wetlands and Streams**  
**Sheet 35 of 217**





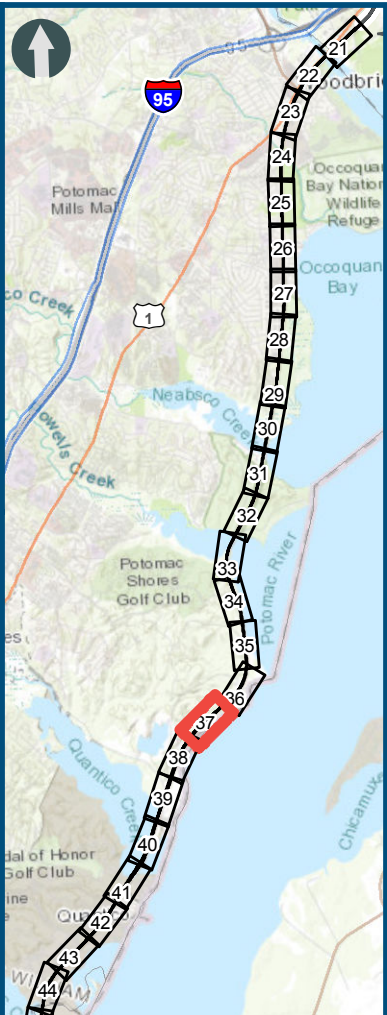
0 100 200  
Feet  
1 inch = 200 feet  
@ 11 x 17 inches  
Projection: Lambert Conformal Conic  
State Plane Virginia North FIPS 4501 Feet  
North American Datum of 1983  
Imagery/Basemap Source: 2015-2017 VGIN  
Aerial Imagery; ESRI World Transportation

- Legend**
- Permanent Limits of Disturbance
  - Temporary Limits of Disturbance
  - CSXT Mileposts
  - Track - Existing
  - Existing Stations
  - Culverts
  - Delineated Stream Impacts
  - Delineated Streams
  - Major River Impacts
  - Waterbodies
  - Delineated Wetlands
  - Delineated Wetland Impacts
  - Resource Protection Areas
  - Resource Protection Area Impacts
  - Impaired Waters (Virginia Department of Environmental Quality)
  - CSXT ROW (County Parcel Data)
  - City/County Parcels
  - City/County Boundary

**Figure M-1**  
**Preferred Alternative –**  
**Potential Impacts to**  
**Wetlands and Streams**  
**Sheet 36 of 217**



\\dlsmain\GIS\_DATA\GIS\Projects\011545\_VA Dept of Rails-Public\Transportation\0239056\_RAPS-4\AI\Dev-Concept\Eng\map\_docs\mxd\FEIS\Map\_M-1\_WetlandsStreams\_11x17.mxd | Last Updated: 12.06.2018



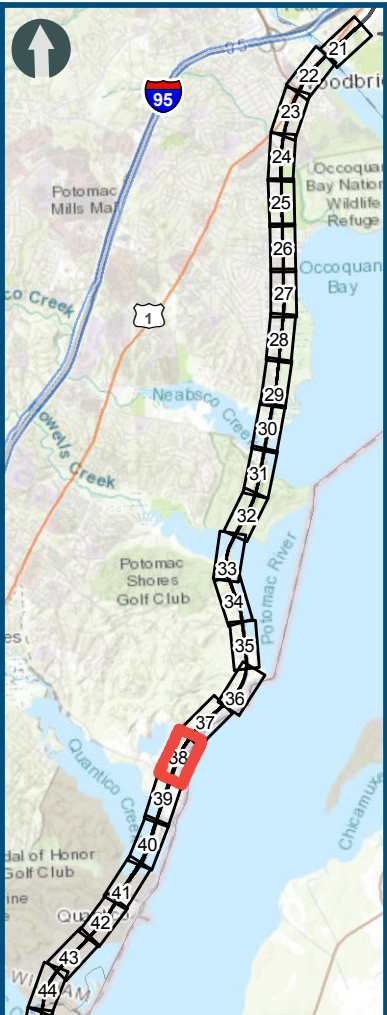
0 100 200  
Feet  
1 inch = 200 feet  
@ 11 x 17 inches  
Projection: Lambert Conformal Conic  
State Plane Virginia North FIPS 4501 Feet  
North American Datum of 1983  
Imagery/Basemap Source: 2015-2017 VGIN  
Aerial Imagery; ESRI World Transportation

#### Legend

- Permanent Limits of Disturbance
- Temporary Limits of Disturbance
- CSXT Mileposts
- Track - Existing
- Existing Stations
- Culverts
- Delineated Stream Impacts
- Delineated Streams
- Major River Impacts
- Waterbodies
- Delineated Wetlands
- Delineated Wetland Impacts
- Resource Protection Areas
- Resource Protection Area Impacts
- Impaired Waters (Virginia Department of Environmental Quality)
- CSXT ROW (County Parcel Data)
- City/County Parcels
- City/County Boundary

**Figure M-1**  
**Preferred Alternative –**  
**Potential Impacts to**  
**Wetlands and Streams**  
**Sheet 37 of 217**





0 100 200  
Feet  
1 inch = 200 feet  
@ 11 x 17 inches  
Projection: Lambert Conformal Conic  
State Plane Virginia North FIPS 4501 Feet  
North American Datum of 1983  
Imagery/Basemap Source: 2015-2017 VGIN  
Aerial Imagery; ESRI World Transportation

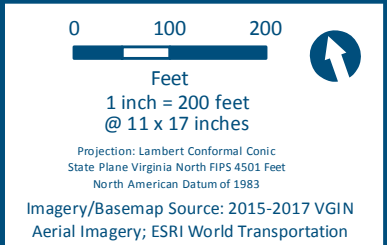
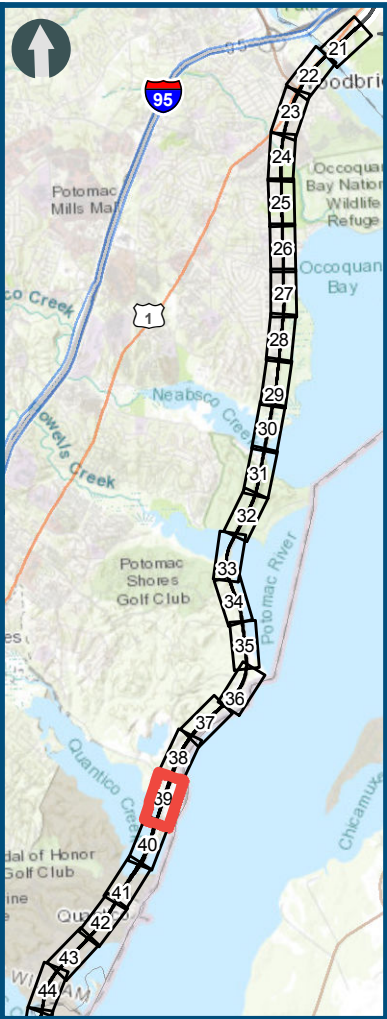
- Legend**
- Permanent Limits of Disturbance
  - Temporary Limits of Disturbance
  - CSXT Mileposts
  - Track - Existing
  - Existing Stations
  - Culverts
  - Delineated Stream Impacts
  - Delineated Streams
  - Major River Impacts
  - Waterbodies
  - Delineated Wetlands
  - Delineated Wetland Impacts
  - Resource Protection Areas
  - Resource Protection Area Impacts
  - Impaired Waters (Virginia Department of Environmental Quality)
  - CSXT ROW (County Parcel Data)
  - City/County Parcels
  - City/County Boundary

**Figure M-1**  
**Preferred Alternative –**  
**Potential Impacts to**  
**Wetlands and Streams**  
**Sheet 38 of 217**





IMPROVEMENTS "BY OTHERS" WERE COMPLETED UNDER A SEPARATE PROJECT BY CSXT BETWEEN CFP 81.3 (N. POSSUM POINT) AND CFP 72.1 (ARKENDALE)

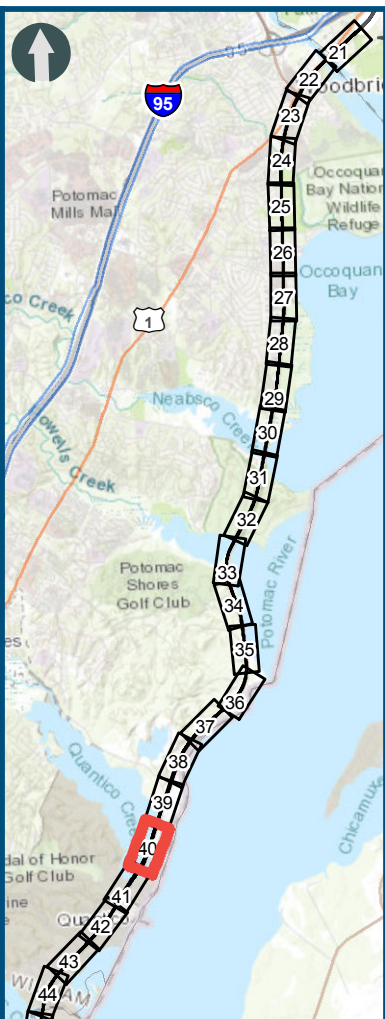


- Legend**
- Permanent Limits of Disturbance
  - Temporary Limits of Disturbance
  - CSXT Mileposts
  - Track - Existing
  - Existing Stations
  - Culverts
  - Delineated Stream Impacts
  - Delineated Streams
  - Major River Impacts
  - Waterbodies
  - Delineated Wetlands
  - Delineated Wetland Impacts
  - Resource Protection Areas
  - Resoure Protection Area Impacts
  - Impaired Waters (Virginia Department of Environmental Quality)
  - CSXT ROW (County Parcel Data)
  - City/County Parcels
  - City/County Boundary

**Figure M-1**  
**Preferred Alternative –**  
**Potential Impacts to**  
**Wetlands and Streams**  
**Sheet 39 of 217**



\\dlmain\GIS\_DATA\GIS\Projects\011545\_VA Dept of Rails-Public Transportation\0239056\_RAPS-4\AltDev-Concept\Eng\map\_docs\mxd\FEIS\Map\_M-1\_WetlandsStreams\_11x17.mxd | Last Updated: 12.06.2018



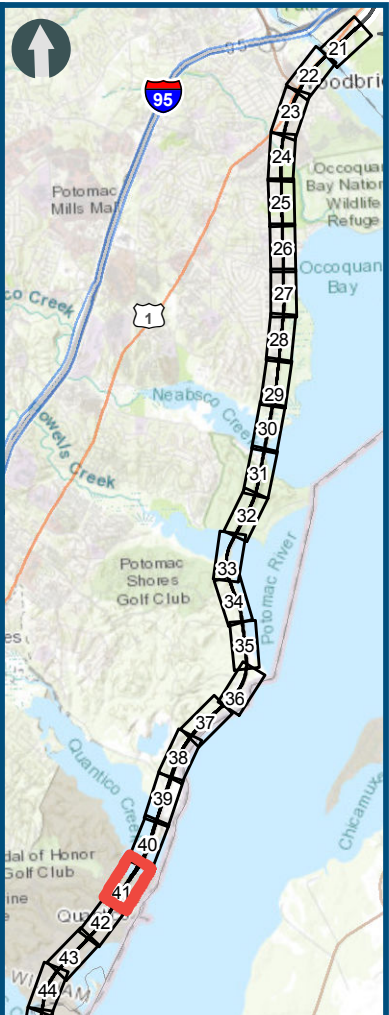
0 100 200  
Feet  
1 inch = 200 feet  
@ 11 x 17 inches  
Projection: Lambert Conformal Conic  
State Plane Virginia North FIPS 4501 Feet  
North American Datum of 1983  
Imagery/Basemap Source: 2015-2017 VGIN  
Aerial Imagery; ESRI World Transportation

#### Legend

- Permanent Limits of Disturbance
- Temporary Limits of Disturbance
- CSXT Mileposts
- Track - Existing
- Existing Stations
- Culverts
- Delineated Stream Impacts
- Delineated Streams
- Major River Impacts
- Waterbodies
- Delineated Wetlands
- Delineated Wetland Impacts
- Resource Protection Areas
- Resource Protection Area Impacts
- Impaired Waters (Virginia Department of Environmental Quality)
- CSXT ROW (County Parcel Data)
- City/County Parcels
- City/County Boundary

**Figure M-1**  
**Preferred Alternative –**  
**Potential Impacts to**  
**Wetlands and Streams**  
**Sheet 40 of 217**



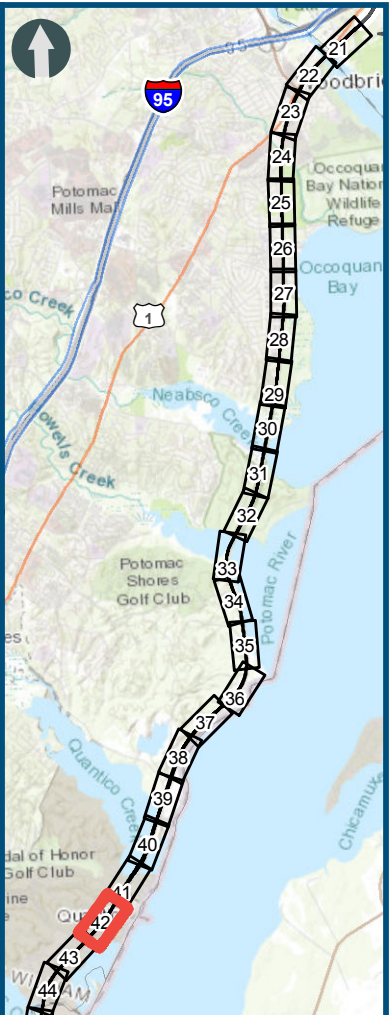
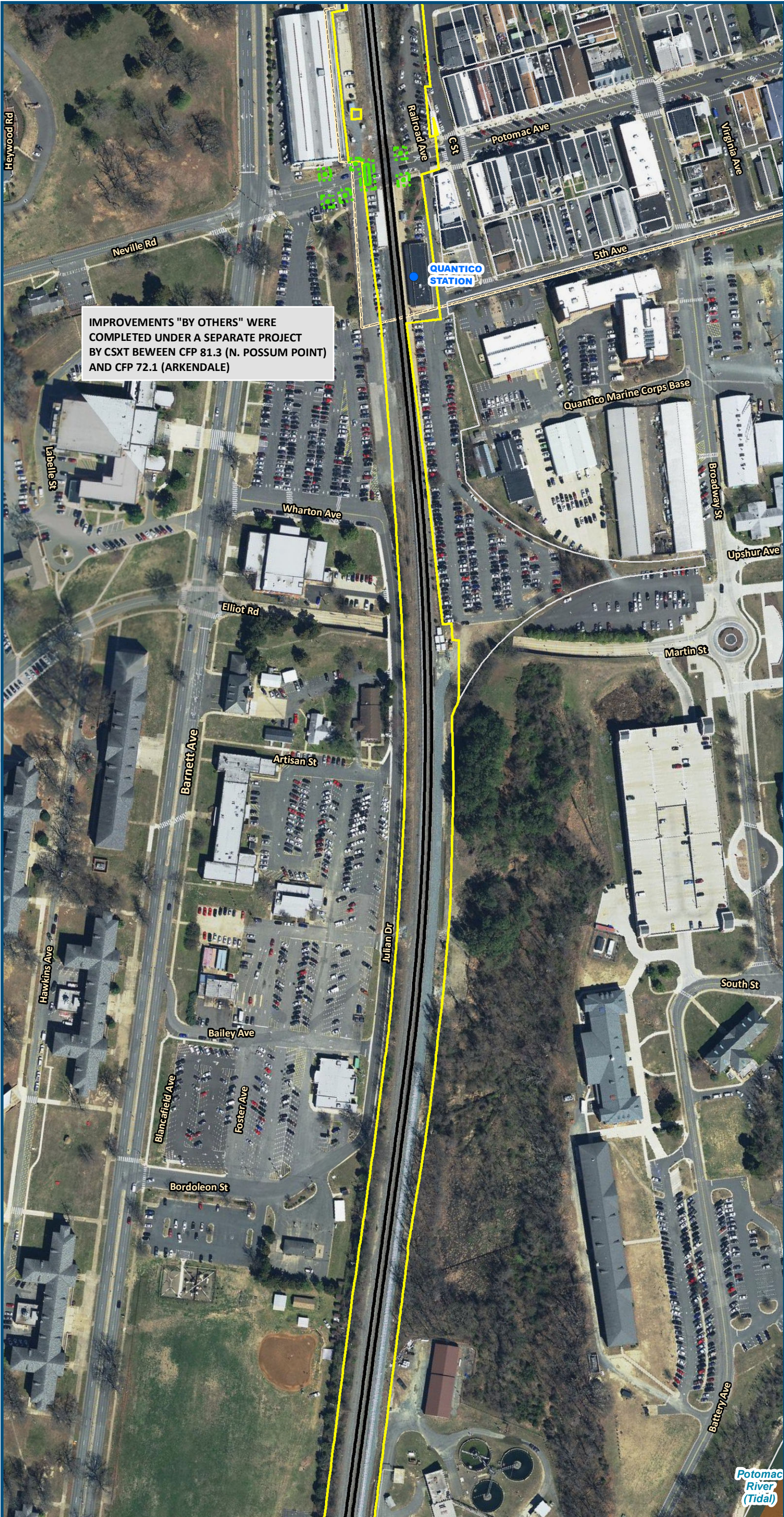


0 100 200  
Feet  
1 inch = 200 feet  
@ 11 x 17 inches  
Projection: Lambert Conformal Conic  
State Plane Virginia North FIPS 4501 Feet  
North American Datum of 1983  
Imagery/Basemap Source: 2015-2017 VGIN  
Aerial Imagery; ESRI World Transportation

- Legend**
- Permanent Limits of Disturbance
  - Temporary Limits of Disturbance
  - CSXT Mileposts
  - Track - Existing
  - Existing Stations
  - Culverts
  - Delineated Stream Impacts
  - Delineated Streams
  - Major River Impacts
  - Waterbodies
  - Delineated Wetlands
  - Delineated Wetland Impacts
  - Resource Protection Areas
  - Resoure Protection Area Impacts
  - Impaired Waters
  - CSXT ROW (County Parcel Data)
  - City/County Parcels
  - City/County Boundary
- (Virginia Department of Environmental Quality)

**Figure M-1**  
**Preferred Alternative –**  
**Potential Impacts to**  
**Wetlands and Streams**  
**Sheet 41 of 217**





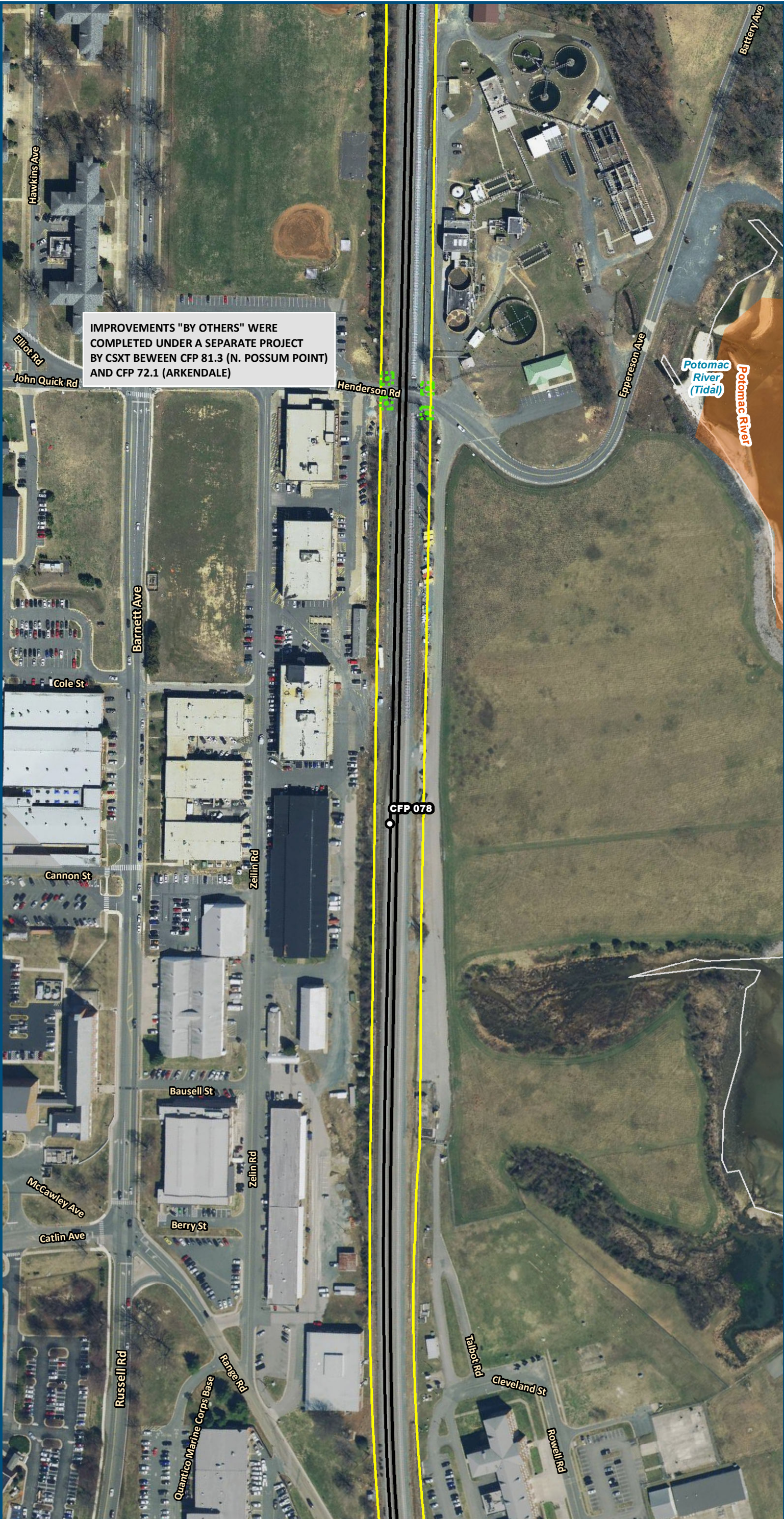
0 100 200  
Feet  
1 inch = 200 feet  
@ 11 x 17 inches  
Projection: Lambert Conformal Conic  
State Plane Virginia North FIPS 4501 Feet  
North American Datum of 1983  
Imagery/Basemap Source: 2015-2017 VGIN  
Aerial Imagery; ESRI World Transportation

#### Legend

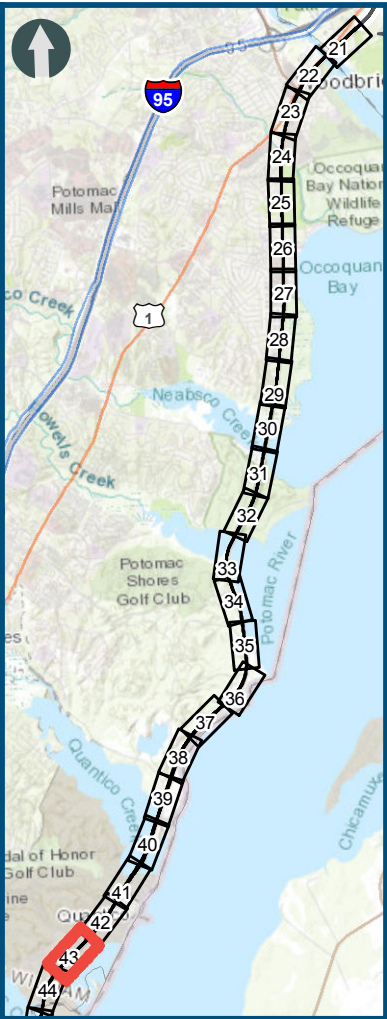
- Permanent Limits of Disturbance
- Temporary Limits of Disturbance
- CSXT Mileposts
- Track - Existing
- Existing Stations
- Culverts
- Delineated Stream Impacts
- Delineated Streams
- Major River Impacts
- Waterbodies
- Delineated Wetlands
- Delineated Wetland Impacts
- Resource Protection Areas
- Resource Protection Area Impacts
- Impaired Waters
- CSXT ROW (County Parcel Data)
- City/County Parcels
- City/County Boundary

Figure M-1  
Preferred Alternative –  
Potential Impacts to  
Wetlands and Streams  
Sheet 42 of 217





IMPROVEMENTS "BY OTHERS" WERE COMPLETED UNDER A SEPARATE PROJECT BY CSXT BETWEEN CFP 81.3 (N. POSSUM POINT) AND CFP 72.1 (ARKENDALE)

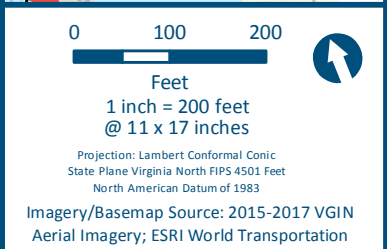
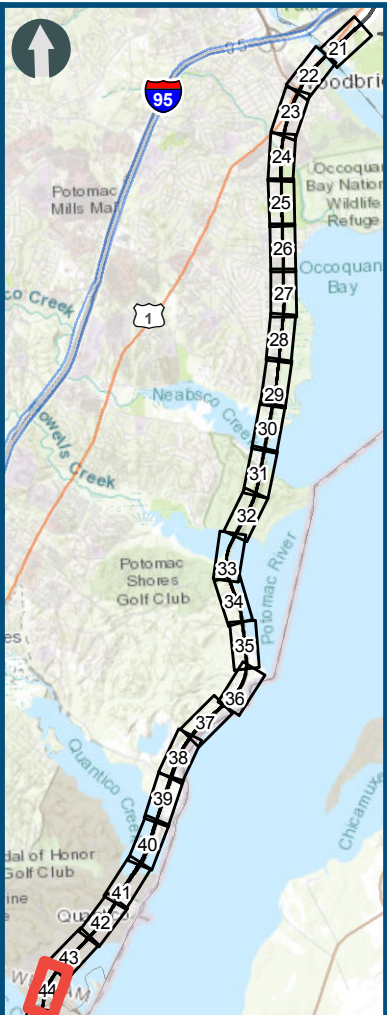
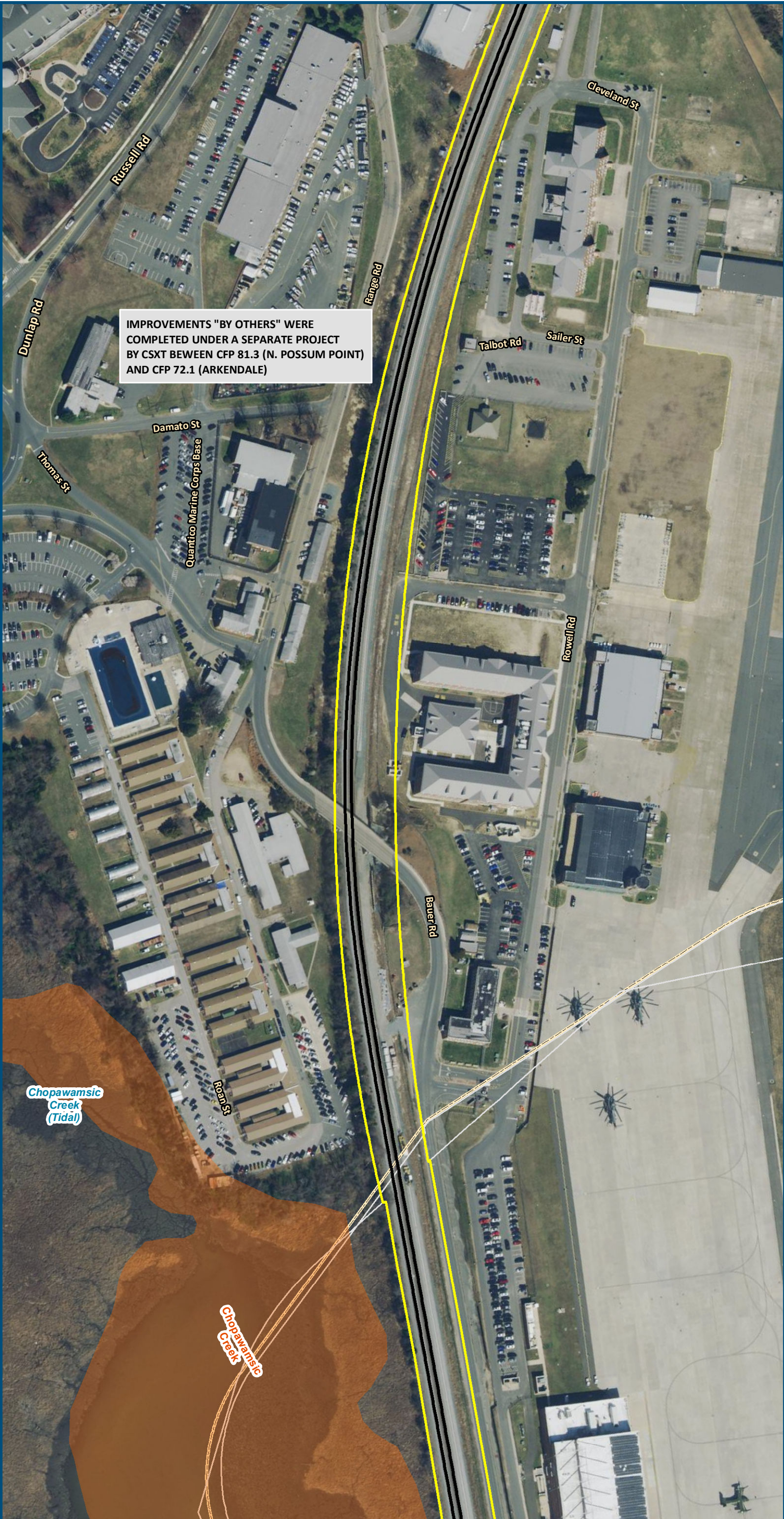


0 100 200  
Feet  
1 inch = 200 feet  
@ 11 x 17 inches  
Projection: Lambert Conformal Conic  
State Plane Virginia North FIPS 4501 Feet  
North American Datum of 1983  
Imagery/Basemap Source: 2015-2017 VGIN  
Aerial Imagery; ESRI World Transportation

- Legend**
- Permanent Limits of Disturbance
  - Temporary Limits of Disturbance
  - CSXT Mileposts
  - Track - Existing
  - Existing Stations
  - Culverts
  - Delineated Stream Impacts
  - Delineated Streams
  - Major River Impacts
  - Waterbodies
  - Delineated Wetlands
  - Delineated Wetland Impacts
  - Resource Protection Areas
  - Resoure Protection Area Impacts
  - Impaired Waters (Virginia Department of Environmental Quality)
  - CSXT ROW (County Parcel Data)
  - City/County Parcels
  - City/County Boundary

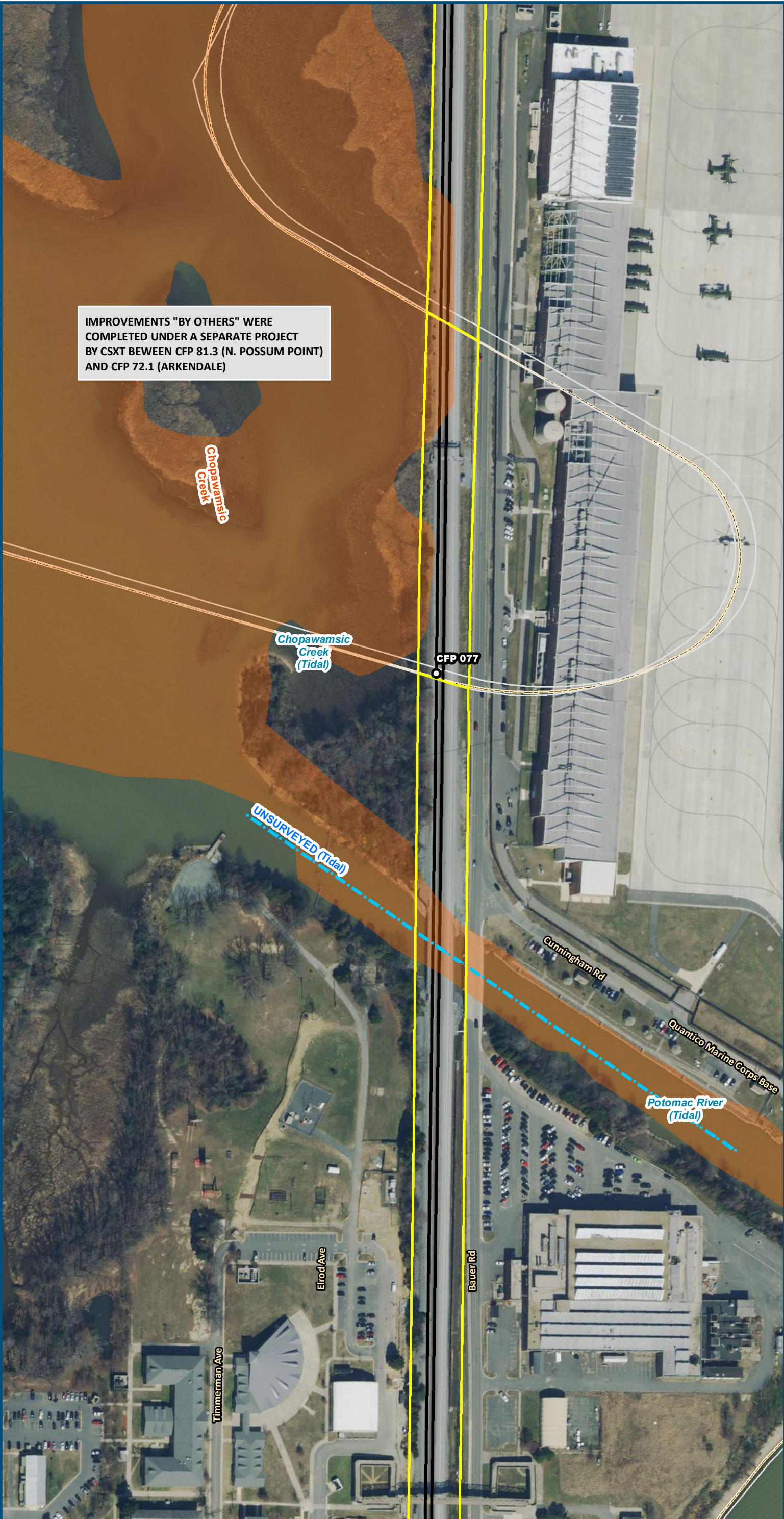
**Figure M-1**  
**Preferred Alternative –**  
**Potential Impacts to**  
**Wetlands and Streams**  
**Sheet 43 of 217**





**Figure M-1**  
**Preferred Alternative –**  
**Potential Impacts to**  
**Wetlands and Streams**  
**Sheet 44 of 217**





IMPROVEMENTS "BY OTHERS" WERE COMPLETED UNDER A SEPARATE PROJECT BY CSXT BETWEEN CFP 81.3 (N. POSSUM POINT) AND CFP 72.1 (ARKENDALE)



0 100 200  
Feet  
1 inch = 200 feet  
@ 11 x 17 inches  
Projection: Lambert Conformal Conic  
State Plane Virginia North FIPS 4501 Feet  
North American Datum of 1983  
Imagery/Basemap Source: 2015-2017 VGIN  
Aerial Imagery; ESRI World Transportation

- Legend**
- Permanent Limits of Disturbance
  - Temporary Limits of Disturbance
  - CSXT Mileposts
  - Track - Existing
  - Existing Stations
  - Culverts
  - Delineated Stream Impacts
  - Delineated Streams
  - Major River Impacts
  - Waterbodies
  - Delineated Wetlands
  - Delineated Wetland Impacts
  - Resource Protection Areas
  - Resoure Protection Area Impacts
  - Impaired Waters
  - CSXT ROW (County Parcel Data)
  - City/County Parcels
  - City/County Boundary
- (Virginia Department of Environmental Quality)

**Figure M-1**  
**Preferred Alternative –**  
**Potential Impacts to**  
**Wetlands and Streams**  
**Sheet 45 of 217**



\\dlmain\GIS\_DATA\GIS\Projects\011545\_VA Dept of Rail\Public Transportation\0239056\_RAPS-4\AI\Dev-Concept\Eng\map\_docs\mxd\FEIS\Map\_M-1\_WetlandsStreams\_11x17.mxd | Last Updated: 12.06.2018



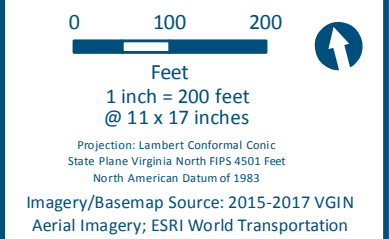
0 100 200  
Feet  
1 inch = 200 feet  
@ 11 x 17 inches  
Projection: Lambert Conformal Conic  
State Plane Virginia North FIPS 4501 Feet  
North American Datum of 1983  
Imagery/Basemap Source: 2015-2017 VGIN  
Aerial Imagery; ESRI World Transportation

- Legend**
- Permanent Limits of Disturbance
  - Temporary Limits of Disturbance
  - CSXT Mileposts
  - Track - Existing
  - Existing Stations
  - Culverts
  - Delineated Stream Impacts
  - Delineated Streams
  - Major River Impacts
  - Waterbodies
  - Delineated Wetlands
  - Delineated Wetland Impacts
  - Resource Protection Areas
  - Resource Protection Area Impacts
  - Impaired Waters
  - CSXT ROW (County Parcel Data)
  - City/County Parcels
  - City/County Boundary
- (Virginia Department of Environmental Quality)

**Figure M-1**  
**Preferred Alternative –**  
**Potential Impacts to**  
**Wetlands and Streams**  
**Sheet 46 of 217**



\\dlmain\GIS\_DATA\GIS\Projects\011545\_VA Dept of Railis-Public\Transportation\0239056\_RAPS-4\AI\Dev-Concept\Eng\map\_docs\mxd\FEIS\Map\_M-1\_WetlandsStreams\_11x17.mxd | Last Updated: 12.06.2018



**Figure M-1**  
**Preferred Alternative –**  
**Potential Impacts to**  
**Wetlands and Streams**  
**Sheet 47 of 217**



IMPROVEMENTS "BY OTHERS" WERE COMPLETED UNDER A SEPARATE PROJECT BY CSXT BETWEEN CFP 81.3 (N. POSSUM POINT) AND CFP 72.1 (ARKENDALE)

Potomac River  
(Tidal)



0 100 200  
Feet

1 inch = 200 feet  
@ 11 x 17 inches

Projection: Lambert Conformal Conic  
State Plane Virginia North FIPS 4501 Feet  
North American Datum of 1983

Imagery/Basemap Source: 2015-2017 VGIN  
Aerial Imagery; ESRI World Transportation

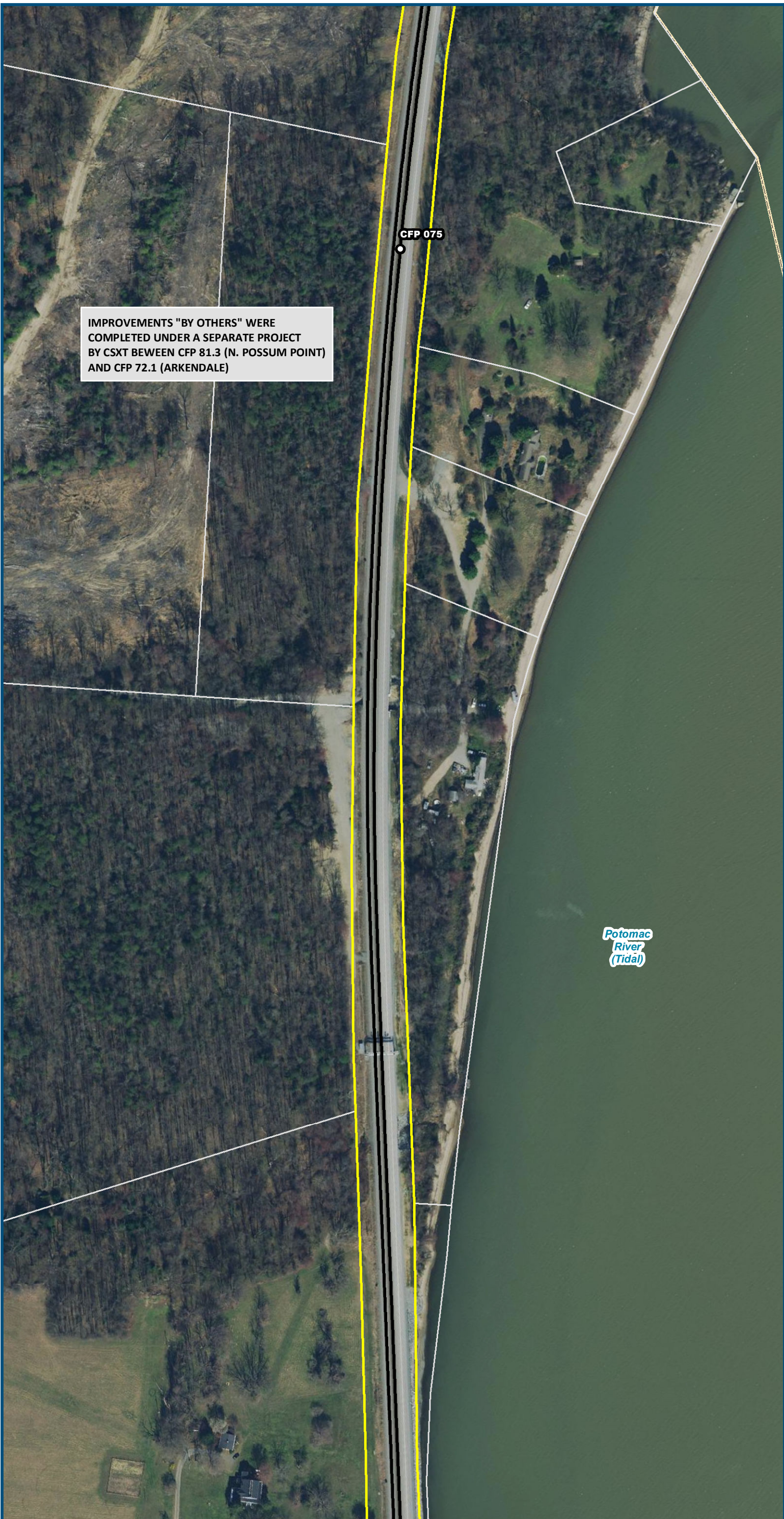
Legend

- Permanent Limits of Disturbance
- Temporary Limits of Disturbance
- CSXT Mileposts
- Track - Existing
- Existing Stations
- Culverts
- Delineated Stream Impacts
- Delineated Streams
- Major River Impacts
- Waterbodies
- Delineated Wetlands
- Delineated Wetland Impacts
- Resource Protection Areas
- Resource Protection Area Impacts
- Impaired Waters (Virginia Department of Environmental Quality)
- CSXT ROW (County Parcel Data)
- City/County Parcels
- City/County Boundary

Figure M-1  
Preferred Alternative –  
Potential Impacts to  
Wetlands and Streams  
Sheet 48 of 217



\\dlmain\GIS\_DATA\GIS\Projects\011545\_VA Dept of Rail\Public Transportation\0239056\_RAPS-4\AI Dev-Concept\Eng\map\_docs\mxd\FEIS\Map\_M-1\_WetlandsStreams\_11x17.mxd | Last Updated: 12.06.2018



0 100 200  
Feet  
1 inch = 200 feet  
@ 11 x 17 inches  
Projection: Lambert Conformal Conic  
State Plane Virginia North FIPS 4501 Feet  
North American Datum of 1983  
Imagery/Basemap Source: 2015-2017 VGIN  
Aerial Imagery; ESRI World Transportation

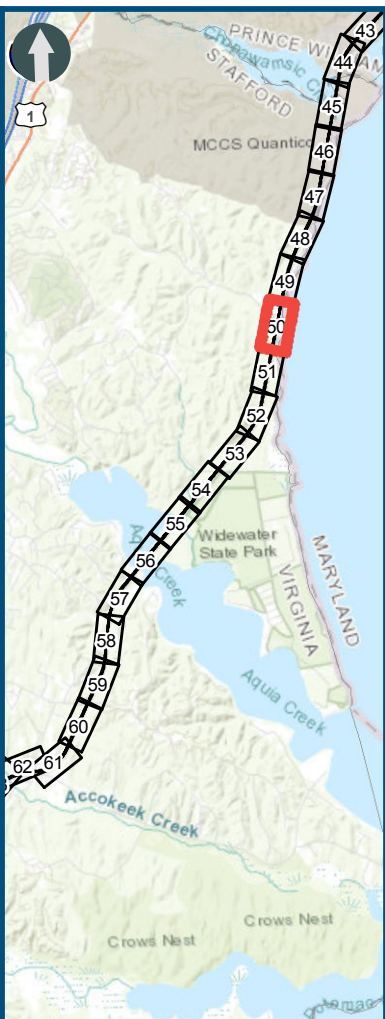
#### Legend

- Permanent Limits of Disturbance
- Temporary Limits of Disturbance
- CSXT Mileposts
- Track - Existing
- Existing Stations
- Culverts
- Delineated Stream Impacts
- Delineated Streams
- Major River Impacts
- Waterbodies
- Delineated Wetlands
- Delineated Wetland Impacts
- Resource Protection Areas
- Resource Protection Area Impacts
- Impaired Waters (Virginia Department of Environmental Quality)
- CSXT ROW (County Parcel Data)
- City/County Parcels
- City/County Boundary

**Figure M-1**  
**Preferred Alternative –**  
**Potential Impacts to**  
**Wetlands and Streams**  
**Sheet 49 of 217**



\\dlsmain\GIS\_DATA\GIS\Projects\011545\_VA Dept of Rails-Public\Transportation\0239056\_RAPS-4\AI\Dev-Concept\Eng\map\_docs\mxd\FEIS\Map\_M-1\_WetlandsStreams\_11x17.mxd | Last Updated: 12.06.2018



0 100 200  
Feet  
1 inch = 200 feet  
@ 11 x 17 inches  
Projection: Lambert Conformal Conic  
State Plane Virginia North FIPS 4501 Feet  
North American Datum of 1983  
Imagery/Basemap Source: 2015-2017 VGIN  
Aerial Imagery; ESRI World Transportation

#### Legend

- Permanent Limits of Disturbance
- Temporary Limits of Disturbance
- CSXT Mileposts
- Track - Existing
- Existing Stations
- Culverts
- Delineated Stream Impacts
- Delineated Streams
- Major River Impacts
- Waterbodies
- Delineated Wetlands
- Delineated Wetland Impacts
- Resource Protection Areas
- Resource Protection Area Impacts
- Impaired Waters (Virginia Department of Environmental Quality)
- CSXT ROW (County Parcel Data)
- City/County Parcels
- City/County Boundary

**Figure M-1**  
**Preferred Alternative –**  
**Potential Impacts to**  
**Wetlands and Streams**  
**Sheet 50 of 217**