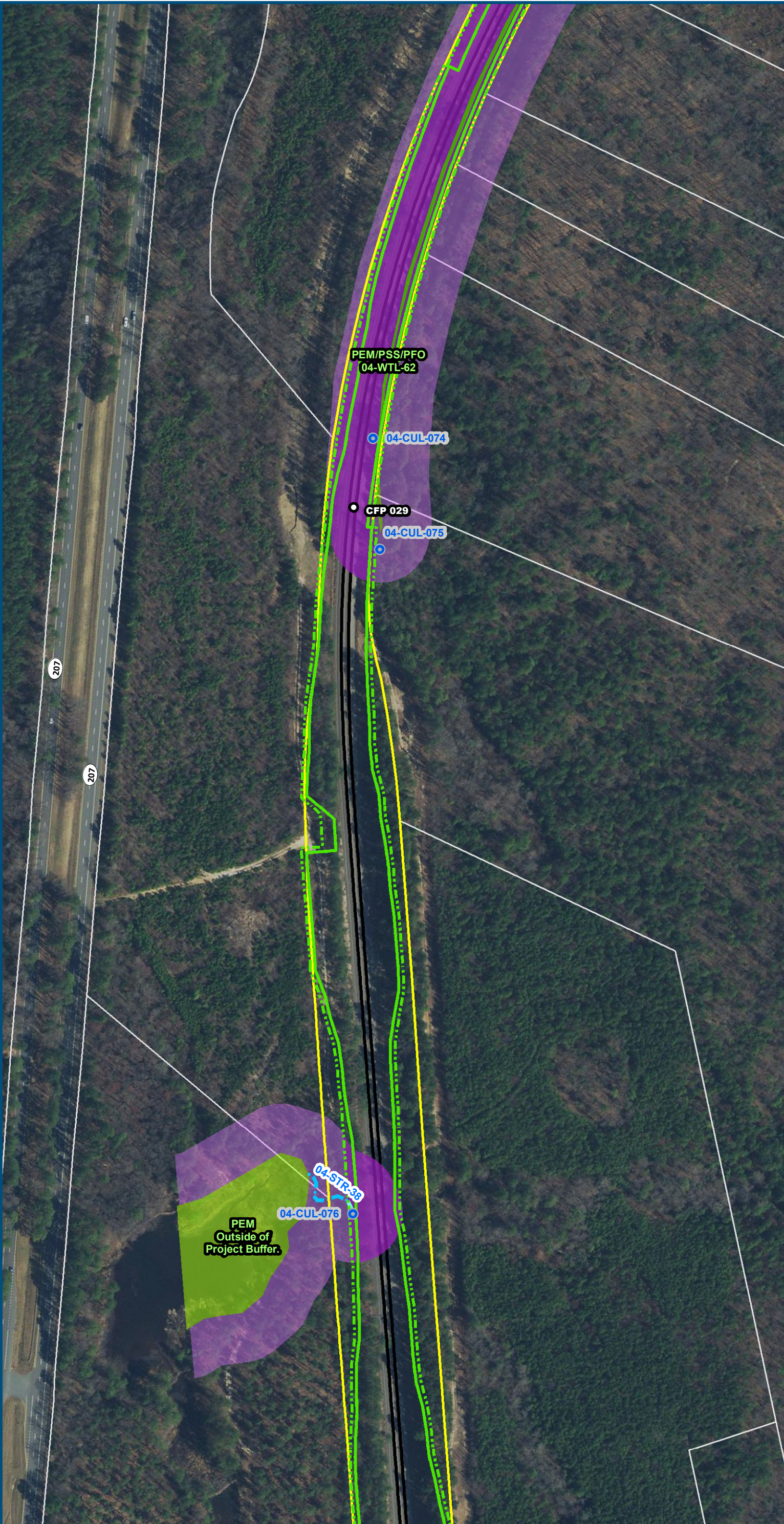


\\dlmain\GIS_DATA\GIS\Projects\011545_VA\DeptofRails-PublicTransportation\0239056_RAPS-4\AIIDev-ConceptEng\map_docs\mxd\FEIS\Map_M-1_WetlandsStreams_11x17.mxd | Last Updated: 12.06.2018

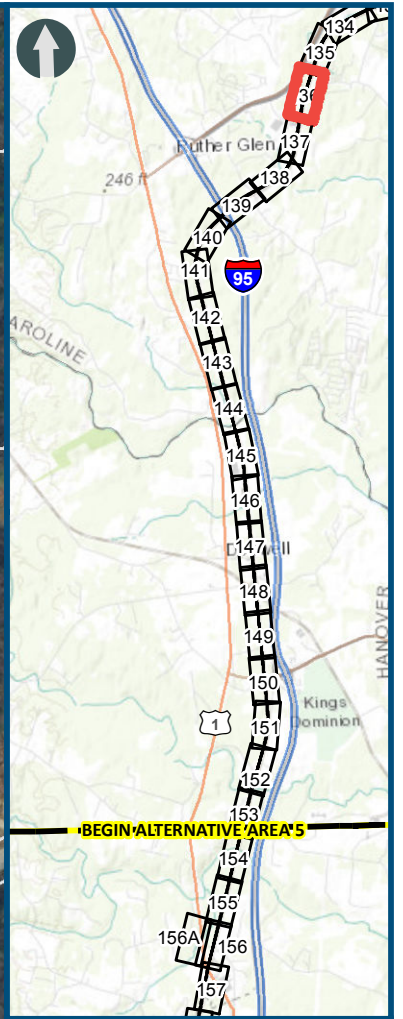
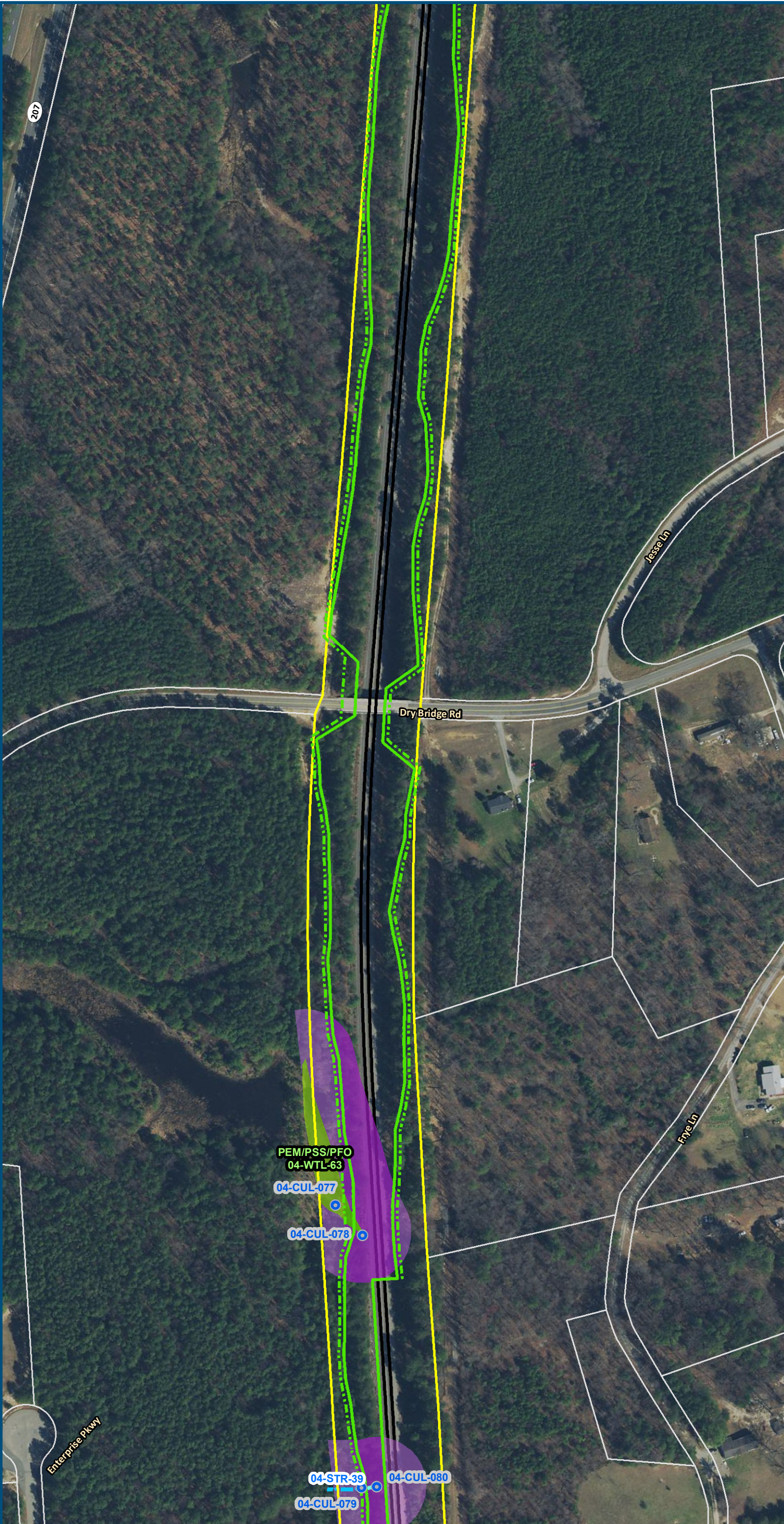


0 100 200
Feet
1 inch = 200 feet
@ 11 x 17 inches
Projection: Lambert Conformal Conic
State Plane Virginia North FIPS 4501 Feet
North American Datum of 1983
Imagery/Basemap Source: 2015-2017 VGIN
Aerial Imagery; ESRI World Transportation

- Legend**
- Permanent Limits of Disturbance
 - Temporary Limits of Disturbance
 - CSXT Mileposts
 - Track - Existing
 - Existing Stations
 - Culverts
 - Delineated Stream Impacts
 - Delineated Streams
 - Major River Impacts
 - Waterbodies
 - Delineated Wetlands
 - Delineated Wetland Impacts
 - Resource Protection Areas
 - Resource Protection Area Impacts
 - Impaired Waters *(Virginia Department of Environmental Quality)*
 - CSXT ROW (County Parcel Data)
 - City/County Parcels
 - City/County Boundary

Figure M-1
Preferred Alternative –
Potential Impacts to
Wetlands and Streams
Sheet 135 of 217

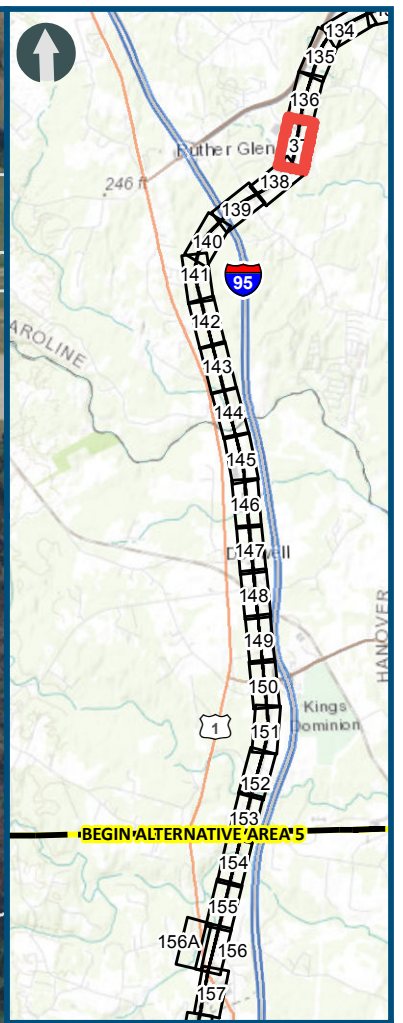
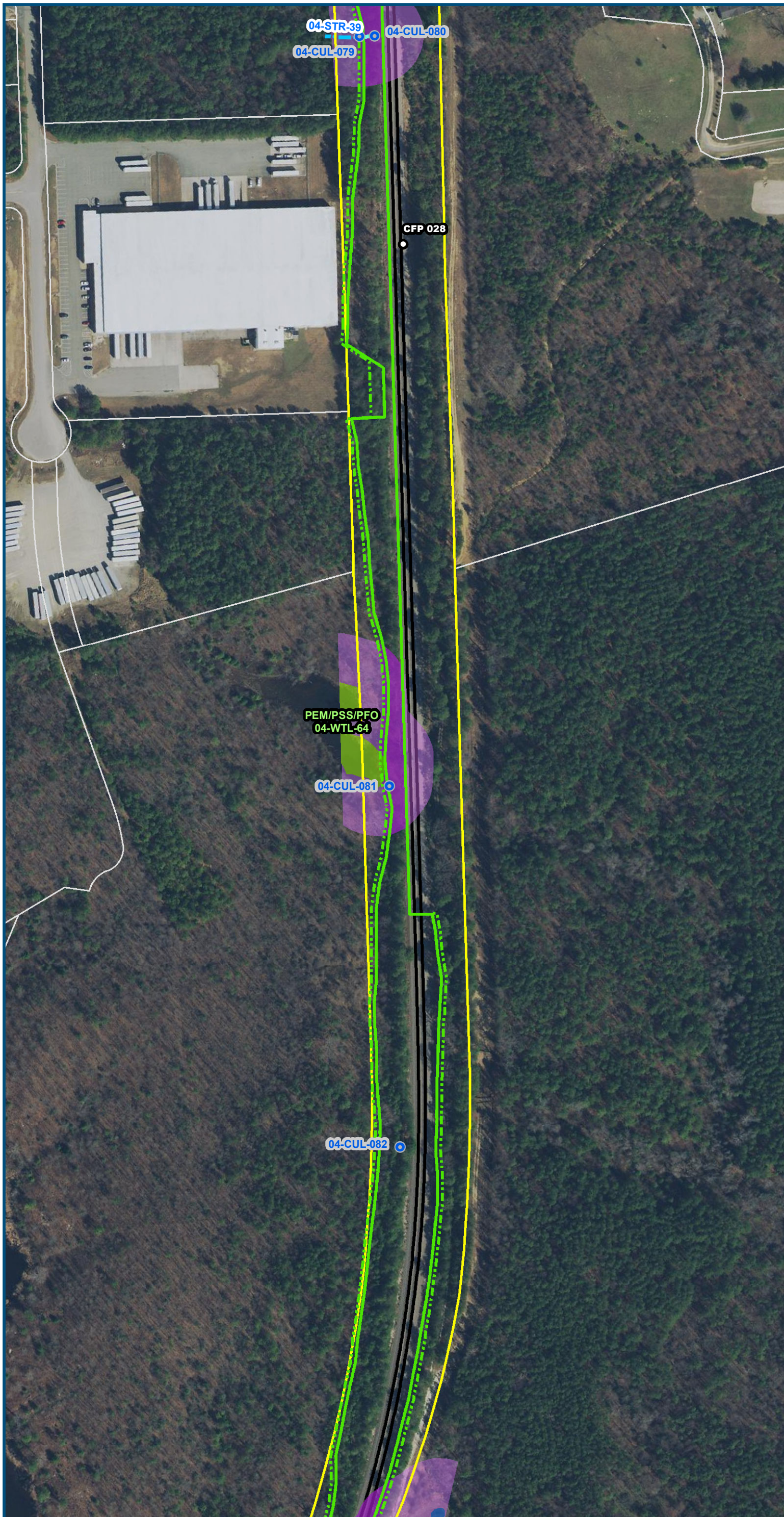
\\dlmain\GIS_DATA\GIS\Projects\011545_VA\DeptofRails-PublicTransportation\0239056_RAPS-4\AIDev-Concept\Eng\map_docs\mxd\FEIS\Map_M-1_WetlandsStreams_11x17.mxd | Last Updated: 12.06.2018



0 100 200
Feet
1 inch = 200 feet
@ 11 x 17 inches
Projection: Lambert Conformal Conic
State Plane Virginia North FIPS 4501 Feet
North American Datum of 1983
Imagery/Basemap Source: 2015-2017 VGIN
Aerial Imagery; ESRI World Transportation

- Legend**
- Permanent Limits of Disturbance
 - Temporary Limits of Disturbance
 - CSXT Mileposts
 - Track - Existing
 - Existing Stations
 - Culverts
 - Delineated Stream Impacts
 - Delineated Streams
 - Major River Impacts
 - Waterbodies
 - Delineated Wetlands
 - Delineated Wetland Impacts
 - Resource Protection Areas
 - Resource Protection Area Impacts
 - Impaired Waters (Virginia Department of Environmental Quality)
 - CSXT ROW (County Parcel Data)
 - City/County Parcels
 - City/County Boundary

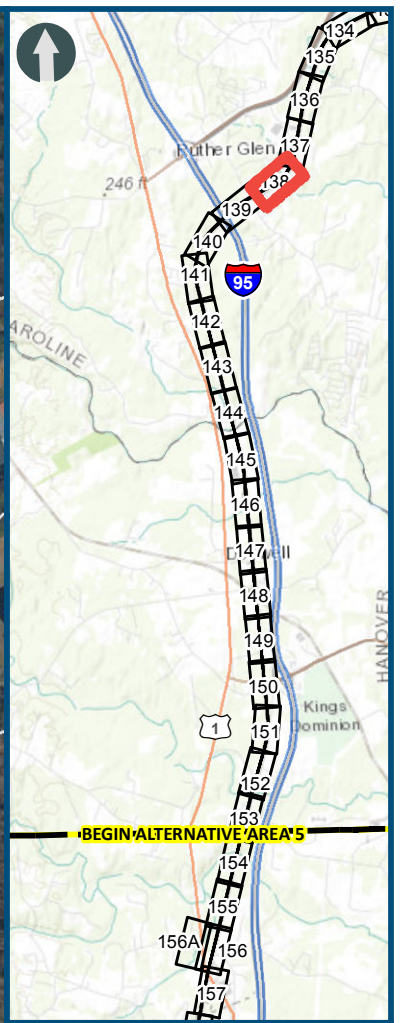
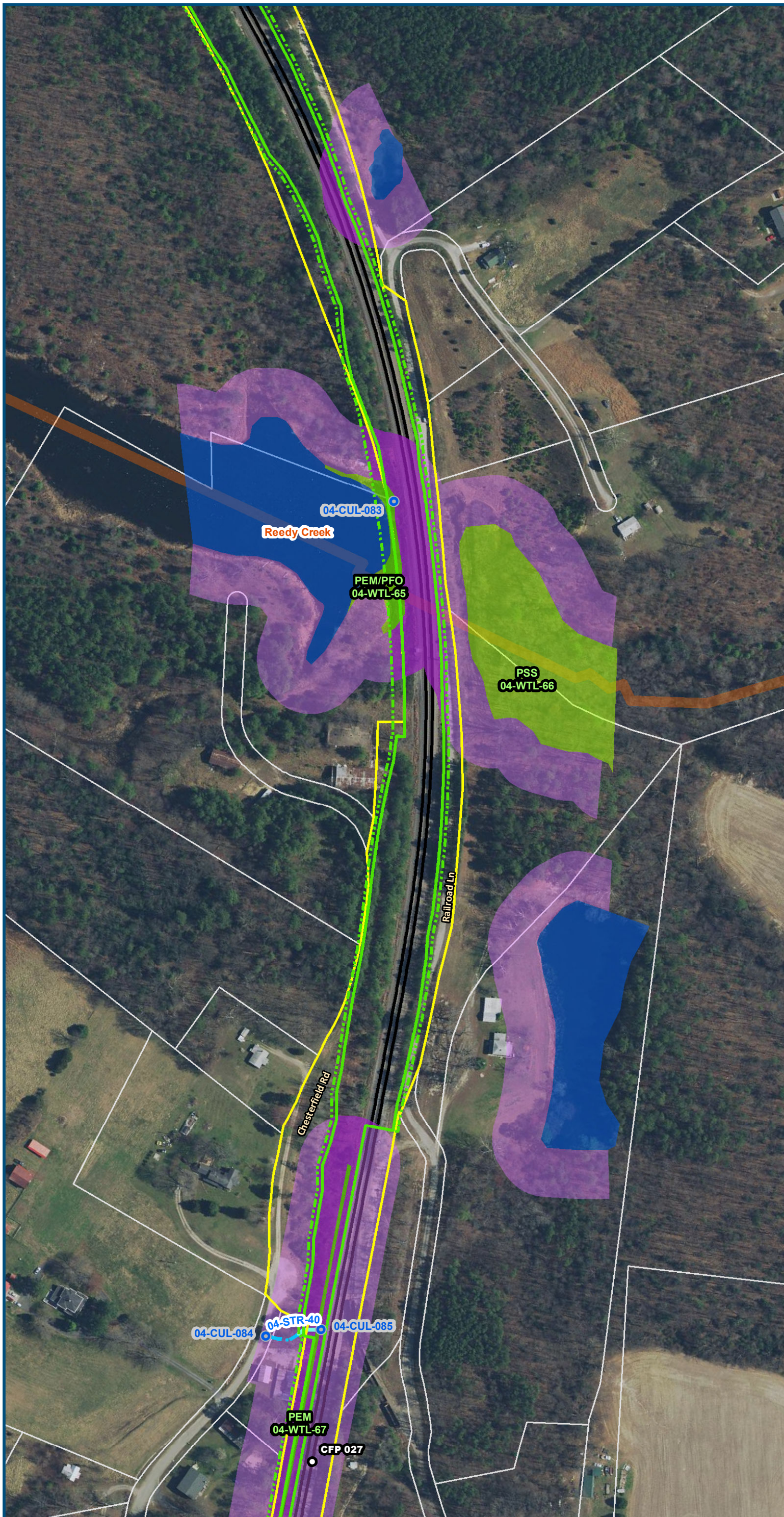
Figure M-1
Preferred Alternative –
Potential Impacts to
Wetlands and Streams
Sheet 136 of 217



- Legend**
- Permanent Limits of Disturbance
 - Temporary Limits of Disturbance
 - CSXT Mileposts
 - Track - Existing
 - Existing Stations
 - Culverts
 - Delineated Stream Impacts
 - - - Delineated Streams
 - Major River Impacts
 - Waterbodies
 - Delineated Wetlands
 - Delineated Wetland Impacts
 - Resource Protection Areas
 - Resource Protection Area Impacts
 - Impaired Waters (Virginia Department of Environmental Quality)
 - CSXT ROW (County Parcel Data)
 - City/County Parcels
 - City/County Boundary

Figure M-1
Preferred Alternative –
Potential Impacts to
Wetlands and Streams
Sheet 137 of 217

\\dlmain\GIS_DATA\GIS\Projects\011545_VA\DeptofRails-PublicTransportation\0239056_RAPS-4\AIDev-Concept\Eng\map_docs\mxd\FEIS\Map_M-1_WetlandsStreams_11x17.mxd | Last Updated: 12.06.2018

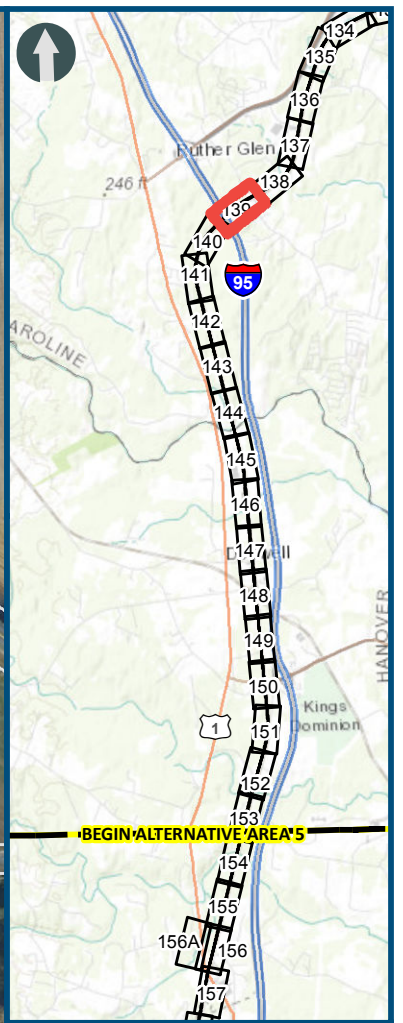
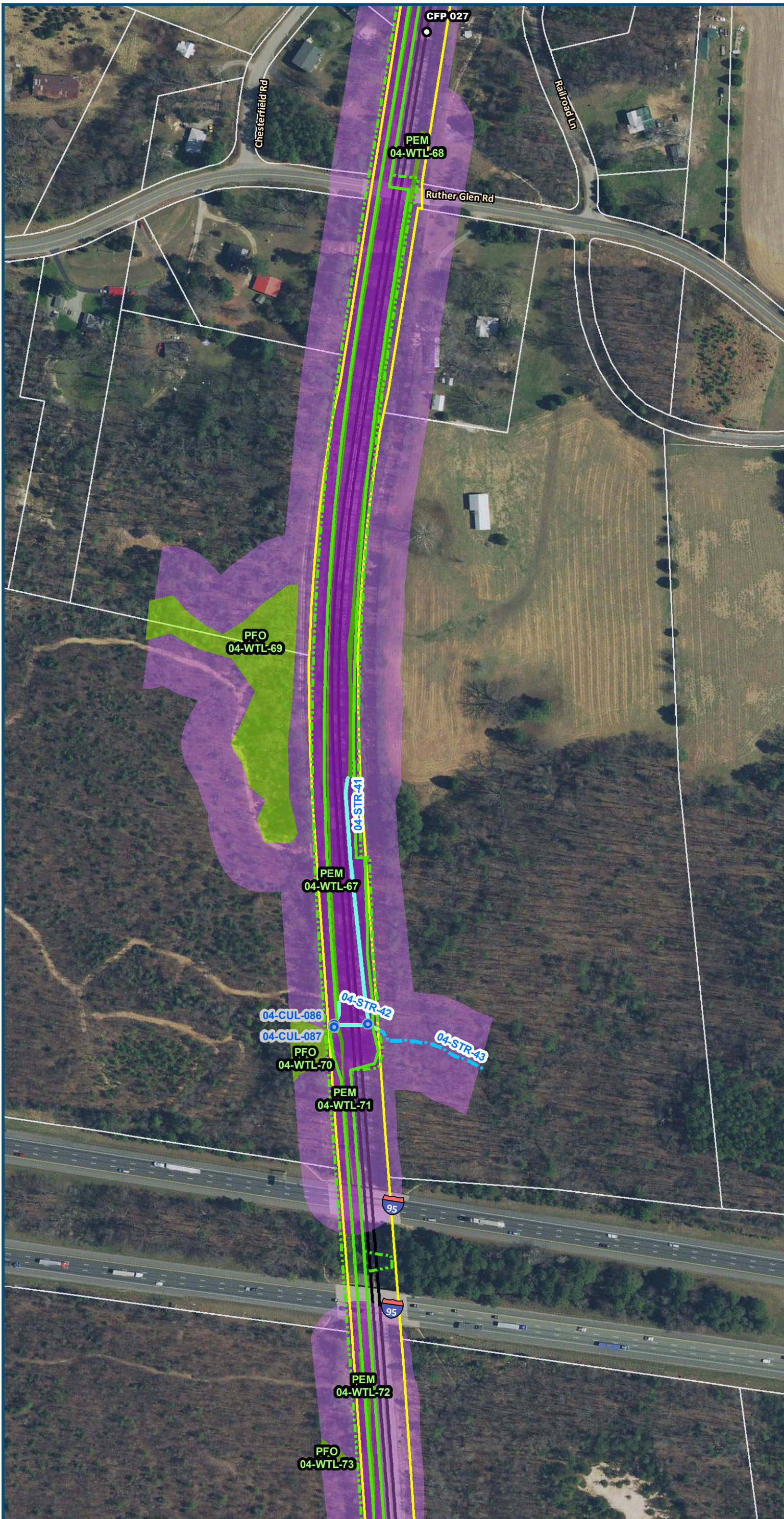


0 100 200
 Feet
 1 inch = 200 feet
 @ 11 x 17 inches
 Projection: Lambert Conformal Conic
 State Plane Virginia North FIPS 4501 Feet
 North American Datum of 1983
 Imagery/Basemap Source: 2015-2017 VGIN
 Aerial Imagery; ESRI World Transportation

- Legend**
- Permanent Limits of Disturbance
 - Temporary Limits of Disturbance
 - CSXT Mileposts
 - Track - Existing
 - Existing Stations
 - Culverts
 - Delineated Stream Impacts
 - · — · — · Delineated Streams
 - Major River Impacts
 - Waterbodies
 - Delineated Wetlands
 - Delineated Wetland Impacts
 - Resource Protection Areas
 - Resource Protection Area Impacts
 - Impaired Waters (Virginia Department of Environmental Quality)
 - CSXT ROW (County Parcel Data)
 - City/County Parcels
 - City/County Boundary

Figure M-1
Preferred Alternative –
Potential Impacts to
Wetlands and Streams
 Sheet 138 of 217

\\dlismain\GIS_DATA\GIS\Projects\011545_VA\DeptofRails-PublicTransportation\0239056_RAPS-4\AIDev-ConceptEng\map_docs\mxd\FEIS\Map_11x17.mxd | Last Updated: 12.06.2018



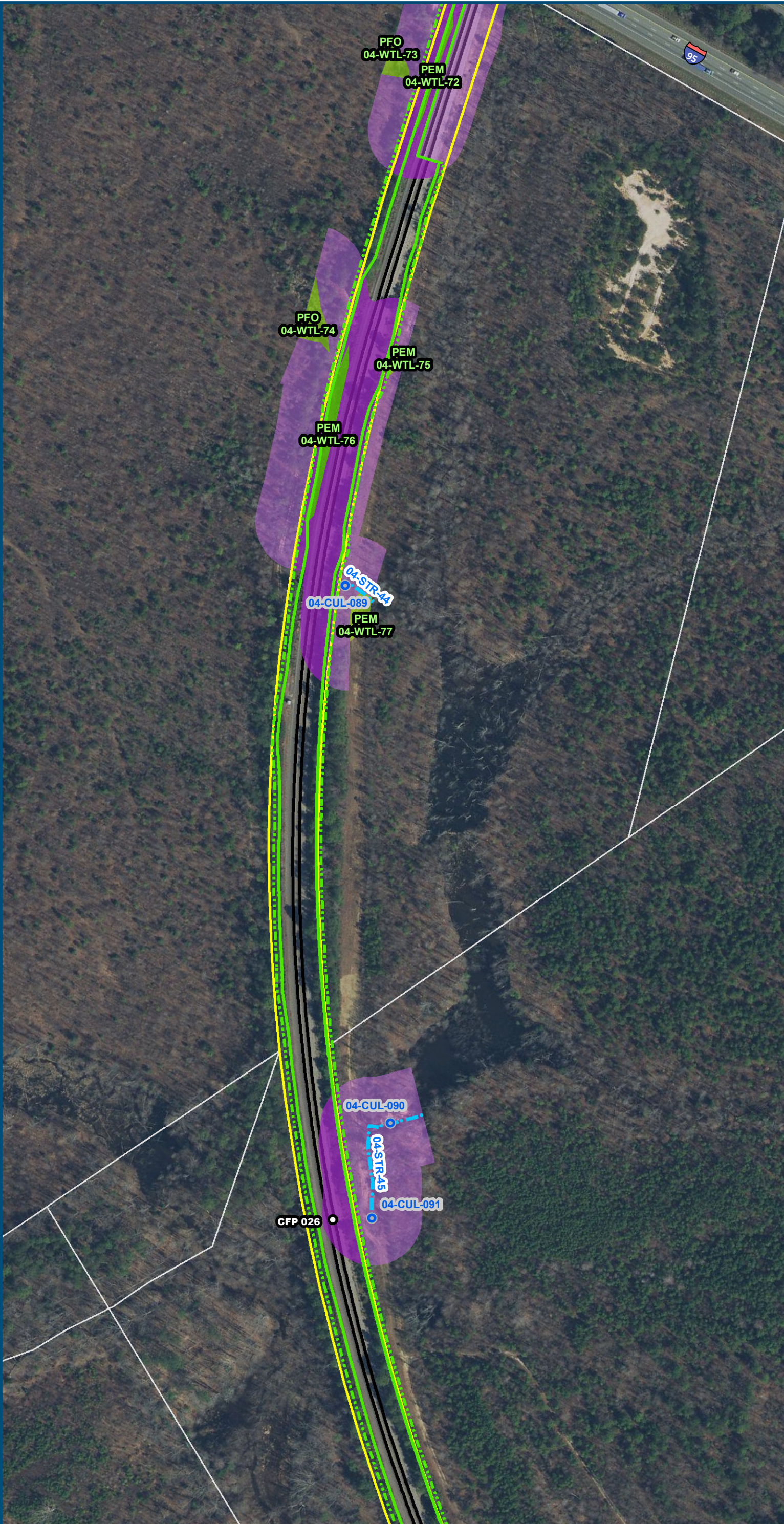
0 100 200
 Feet
 1 inch = 200 feet
 @ 11 x 17 inches
 Projection: Lambert Conformal Conic
 State Plane Virginia North FIPS 4501 Feet
 North American Datum of 1983
 Imagery/Basemap Source: 2015-2017 VGIN
 Aerial Imagery; ESRI World Transportation

- Legend**
- Permanent Limits of Disturbance
 - Temporary Limits of Disturbance
 - CSXT Mileposts
 - Track - Existing
 - Existing Stations
 - Culverts
 - Delineated Stream Impacts
 - Delineated Streams
 - Major River Impacts
 - Waterbodies
 - Delineated Wetlands
 - Delineated Wetland Impacts
 - Resource Protection Areas
 - Resource Protection Area Impacts
 - Impaired Waters
 - CSXT ROW (County Parcel Data)
 - City/County Parcels
 - City/County Boundary
- (Virginia Department of Environmental Quality)

Figure M-1
Preferred Alternative –
Potential Impacts to
Wetlands and Streams
 Sheet 139 of 217

\\dlmain\GIS_DATA\GIS\Projects\011545_VA\DeptofRails-PublicTransportation\0239056_RAPS-4AIDev-ConceptEngngmap_docs\mxd\FEIS\Map_11x17.mxd | Last Updated: 12.06.2018

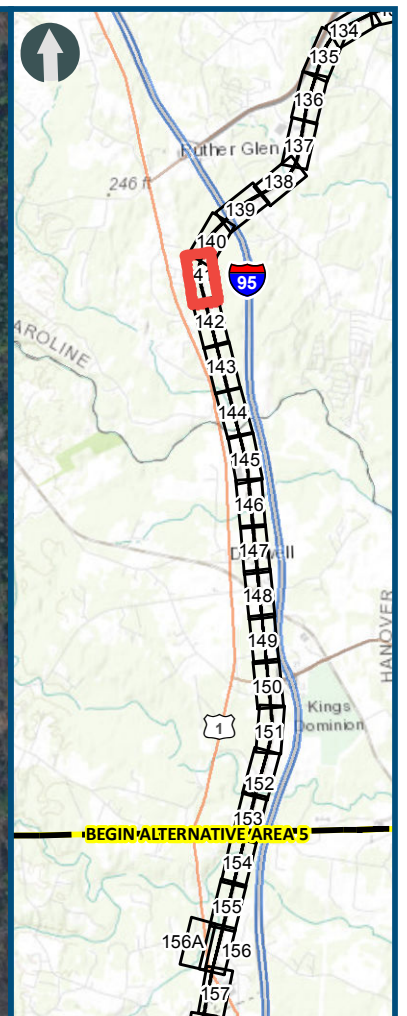
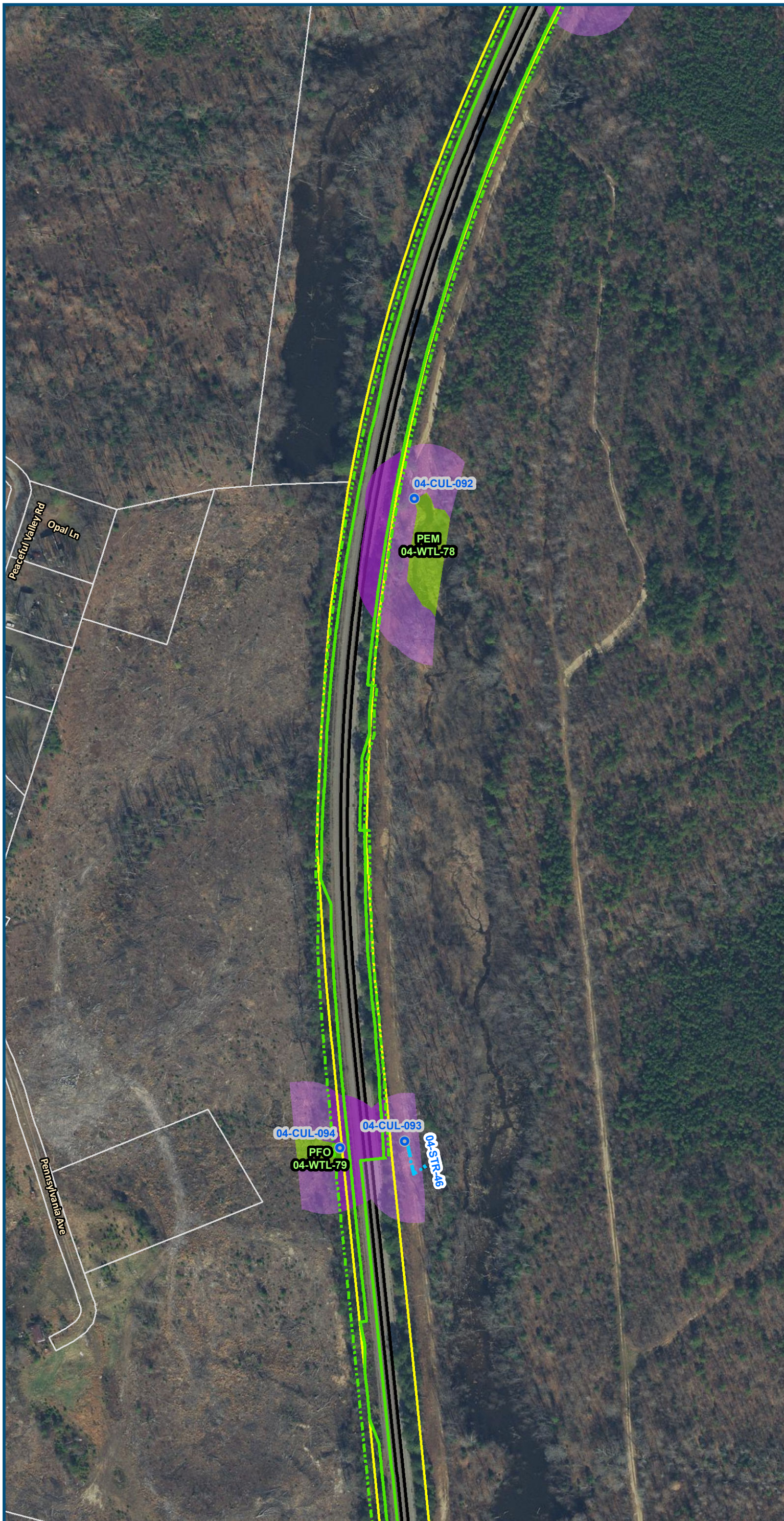
\\dlismain\GIS_DATA\GIS\Projects\011545_VA\DeptofRails-PublicTransportation\0239056_RAPS-4\AIDev-ConceptEng\map_docs\mxd\FEIS\Map_M-1_WetlandsStreams_11x17.mxd | Last Updated: 12.06.2018



0 100 200
Feet
1 inch = 200 feet
@ 11 x 17 inches
Projection: Lambert Conformal Conic
State Plane Virginia North FIPS 4501 Feet
North American Datum of 1983
Imagery/Basemap Source: 2015-2017 VGIN
Aerial Imagery; ESRI World Transportation

- Legend**
- Permanent Limits of Disturbance
 - Temporary Limits of Disturbance
 - CSXT Mileposts
 - Track - Existing
 - Existing Stations
 - Culverts
 - Delineated Stream Impacts
 - Delineated Streams
 - Major River Impacts
 - Waterbodies
 - Delineated Wetlands
 - Delineated Wetland Impacts
 - Resource Protection Areas
 - Resource Protection Area Impacts
 - Impaired Waters (Virginia Department of Environmental Quality)
 - CSXT ROW (County Parcel Data)
 - City/County Parcels
 - City/County Boundary

Figure M-1
Preferred Alternative –
Potential Impacts to
Wetlands and Streams
Sheet 140 of 217



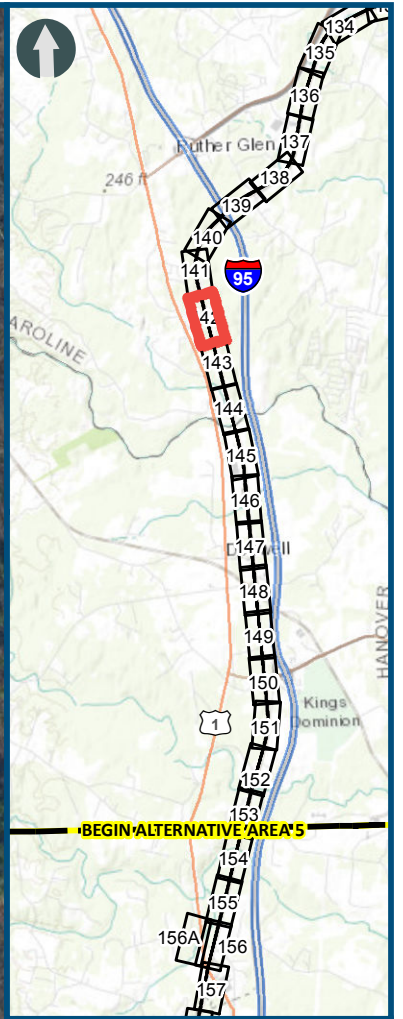
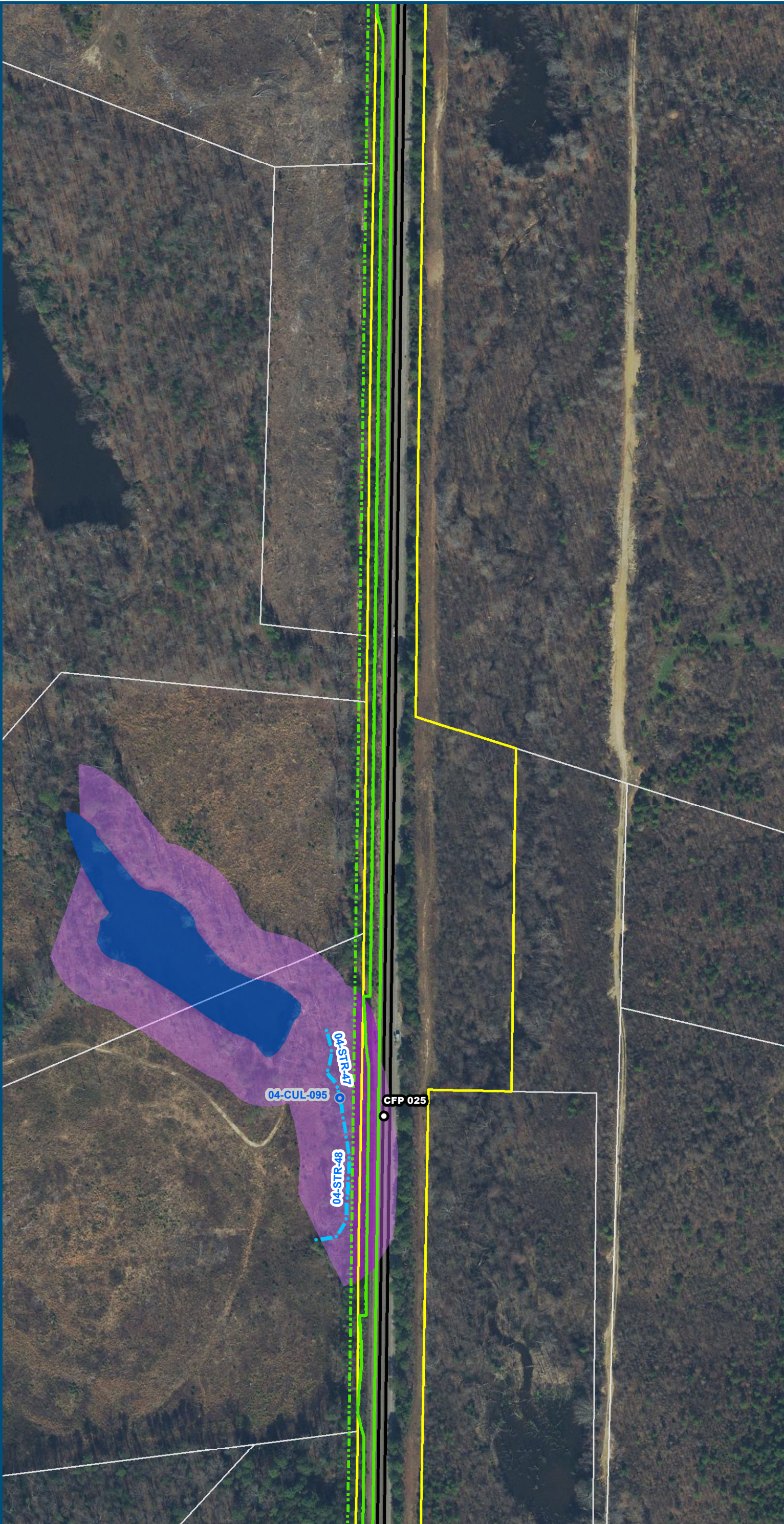
0 100 200
 Feet
 1 inch = 200 feet
 @ 11 x 17 inches
 Projection: Lambert Conformal Conic
 State Plane Virginia North FIPS 4501 Feet
 North American Datum of 1983
 Imagery/Basemap Source: 2015-2017 VGIN
 Aerial Imagery; ESRI World Transportation

- Legend**
- Permanent Limits of Disturbance
 - Temporary Limits of Disturbance
 - CSXT Mileposts
 - Track - Existing
 - Existing Stations
 - Culverts
 - Delineated Stream Impacts
 - Delineated Streams
 - Major River Impacts
 - Waterbodies
 - Delineated Wetlands
 - Delineated Wetland Impacts
 - Resource Protection Areas
 - Resource Protection Area Impacts
 - Impaired Waters (Virginia Department of Environmental Quality)
 - CSXT ROW (County Parcel Data)
 - City/County Parcels
 - City/County Boundary

Figure M-1
Preferred Alternative –
Potential Impacts to
Wetlands and Streams
 Sheet 141 of 217

\\dlmain\GIS_DATA\GIS\Projects\011545_VA\DeptofRails-PublicTransportation\0239056_RAPS-4\AIDev-Concept\Eng\map_docs\mxd\FEIS\Map_M-1_WetlandsStreams_11x17.mxd | Last Updated: 12.06.2018

\\dlmain\GIS_DATA\GIS\Projects\011545_VA\DeptofRails-PublicTransportation\0239056_RAPS-4\AIDev-Concept\Eng\map_docs\mxd\FEIS\Map_M-1_WetlandsStreams_11x17.mxd | Last Updated: 12.06.2018

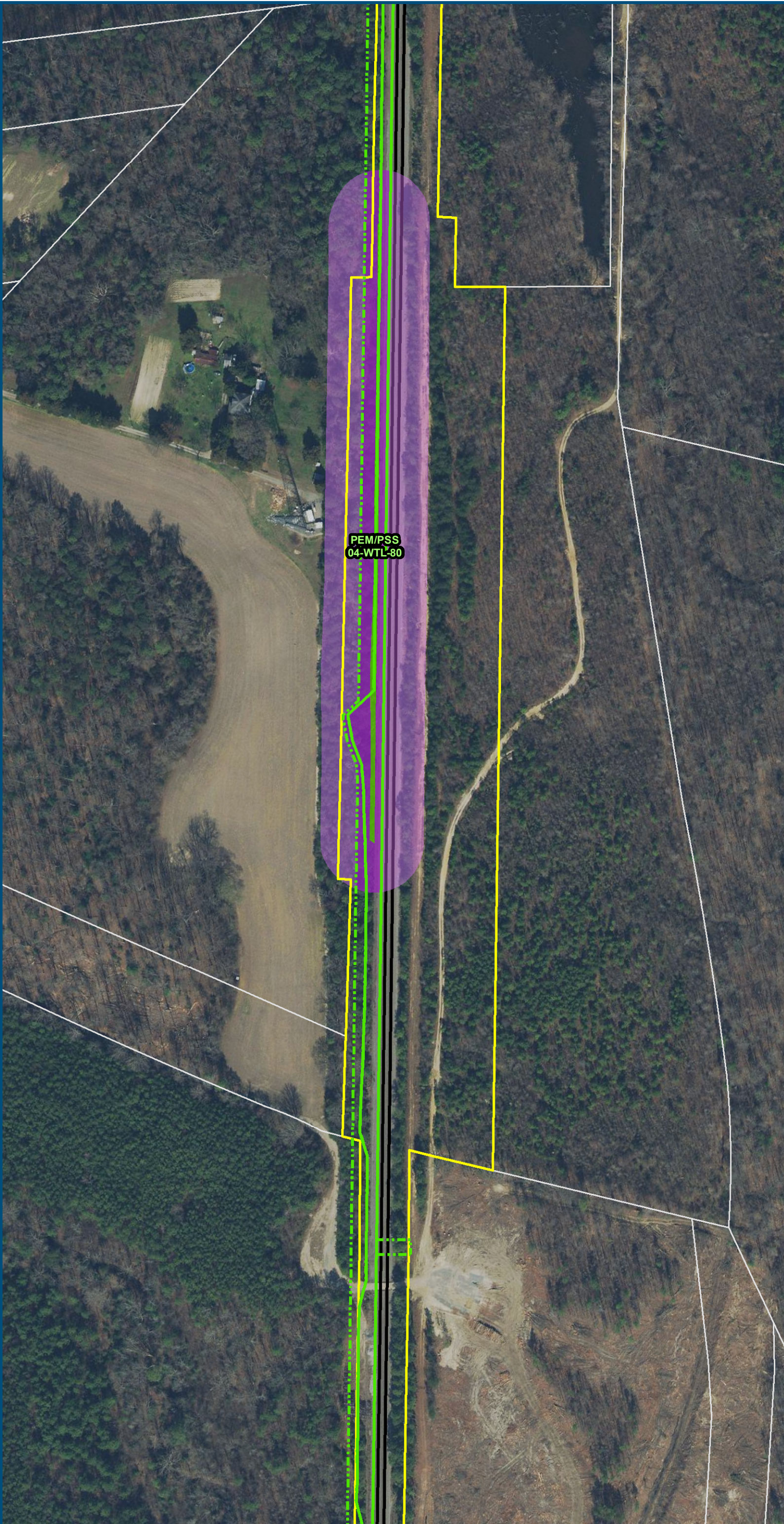


0 100 200
Feet
1 inch = 200 feet
@ 11 x 17 inches
Projection: Lambert Conformal Conic
State Plane Virginia North FIPS 4501 Feet
North American Datum of 1983
Imagery/Basemap Source: 2015-2017 VGIN
Aerial Imagery; ESRI World Transportation

- Legend**
- Permanent Limits of Disturbance
 - Temporary Limits of Disturbance
 - CSXT Mileposts
 - Track - Existing
 - Existing Stations
 - Culverts
 - Delineated Stream Impacts
 - Delineated Streams
 - Major River Impacts
 - Waterbodies
 - Delineated Wetlands
 - Delineated Wetland Impacts
 - Resource Protection Areas
 - Resource Protection Area Impacts
 - Impaired Waters (Virginia Department of Environmental Quality)
 - CSXT ROW (County Parcel Data)
 - City/County Parcels
 - City/County Boundary

Figure M-1
Preferred Alternative –
Potential Impacts to
Wetlands and Streams
Sheet 142 of 217

\\dlismain\GIS_DATA\GIS\Projects\011545_VA\DeptofRails-PublicTransportation\0239056_RAPS-4AIDev-ConceptEng\map_docs\mxd\FEIS\Map_11x17.mxd | Last Updated: 12.06.2018

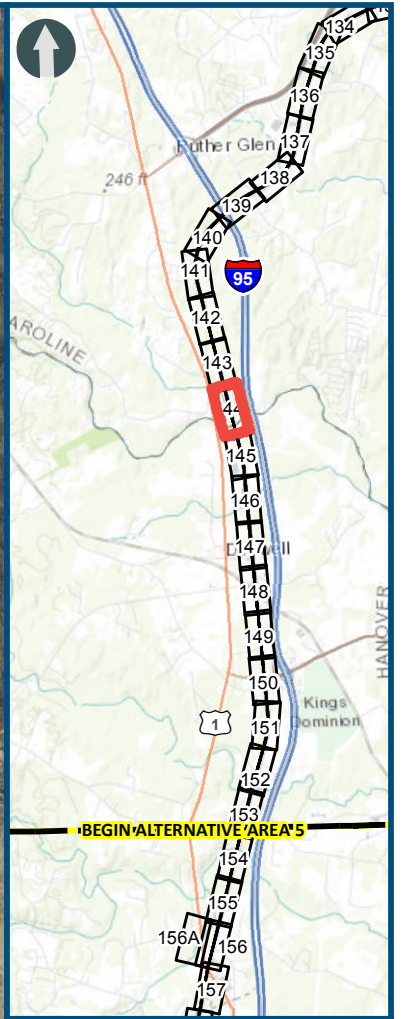


0 100 200
Feet
1 inch = 200 feet
@ 11 x 17 inches
Projection: Lambert Conformal Conic
State Plane Virginia North FIPS 4501 Feet
North American Datum of 1983
Imagery/Basemap Source: 2015-2017 VGIN
Aerial Imagery; ESRI World Transportation

- Legend**
- Permanent Limits of Disturbance
 - Temporary Limits of Disturbance
 - CSXT Mileposts
 - Track - Existing
 - Existing Stations
 - Culverts
 - Delineated Stream Impacts
 - Delineated Streams
 - Major River Impacts
 - Waterbodies
 - Delineated Wetlands
 - Delineated Wetland Impacts
 - Resource Protection Areas
 - Resource Protection Area Impacts
 - Impaired Waters *(Virginia Department of Environmental Quality)*
 - CSXT ROW (County Parcel Data)
 - City/County Parcels
 - City/County Boundary

Figure M-1
Preferred Alternative –
Potential Impacts to
Wetlands and Streams
Sheet 143 of 217

\\dlmain\GIS_DATA\GIS\Projects\011545_VA\DeptofRails-PublicTransportation\0239056_RAPS-4\AIDev-Concept\Enginemap_docs\mxd\FEIS\Map_M-1_WetlandsStreams_11x17.mxd | Last Updated: 12.06.2018

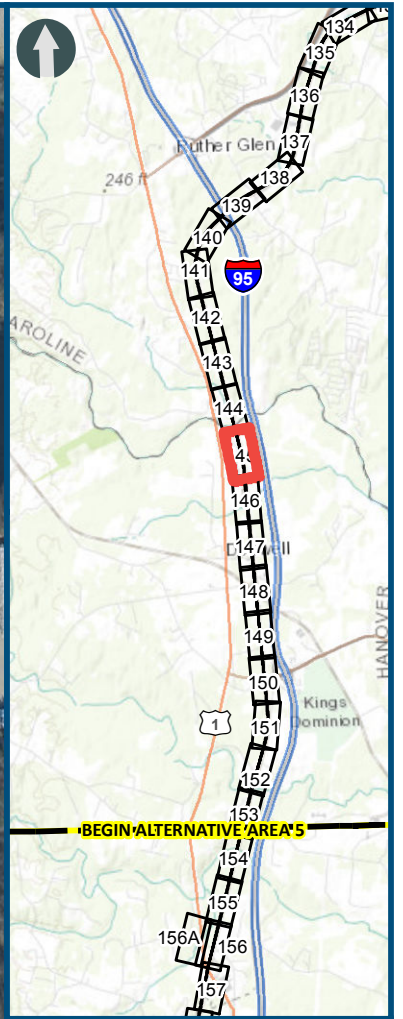
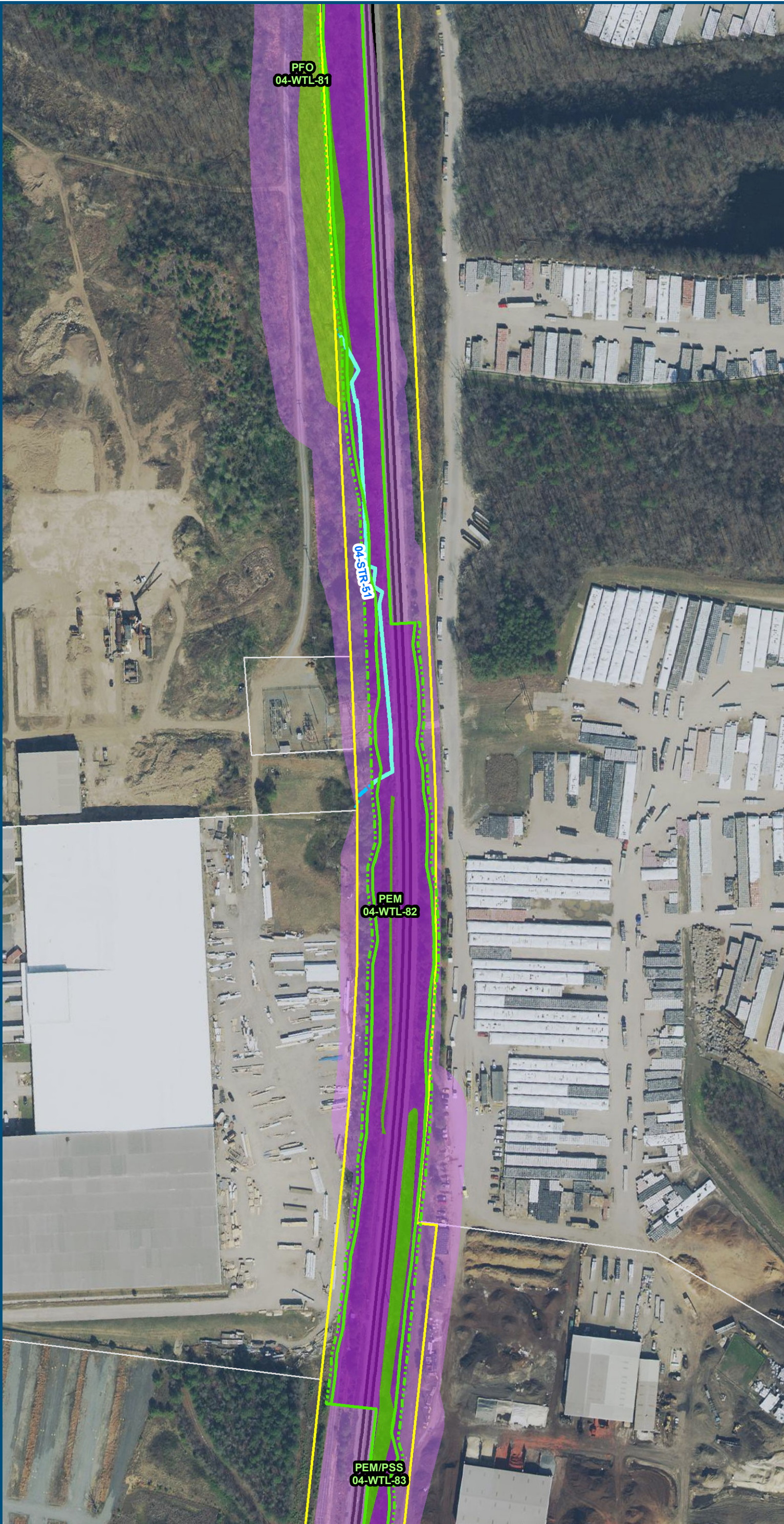


0 100 200
Feet
1 inch = 200 feet
@ 11 x 17 inches
Projection: Lambert Conformal Conic
State Plane Virginia North FIPS 4501 Feet
North American Datum of 1983
Imagery/Basemap Source: 2015-2017 VGIN
Aerial Imagery; ESRI World Transportation

- Legend**
- Permanent Limits of Disturbance
 - Temporary Limits of Disturbance
 - CSXT Mileposts
 - Track - Existing
 - Existing Stations
 - Culverts
 - Delineated Stream Impacts
 - Delineated Streams
 - Major River Impacts
 - Waterbodies
 - Delineated Wetlands
 - Delineated Wetland Impacts
 - Resource Protection Areas
 - Resource Protection Area Impacts
 - Impaired Waters (Virginia Department of Environmental Quality)
 - CSXT ROW (County Parcel Data)
 - City/County Parcels
 - City/County Boundary

Figure M-1
Preferred Alternative –
Potential Impacts to
Wetlands and Streams
Sheet 144 of 217

\\dlmain\GIS_DATA\GIS\Projects\011545_VA\DeptofRails-PublicTransportation\0239056_RAPS-4\AIDev-ConceptEng\map_docs\mxd\FEIS\Map_M-1_WetlandsStreams_11x17.mxd | Last Updated: 12.06.2018

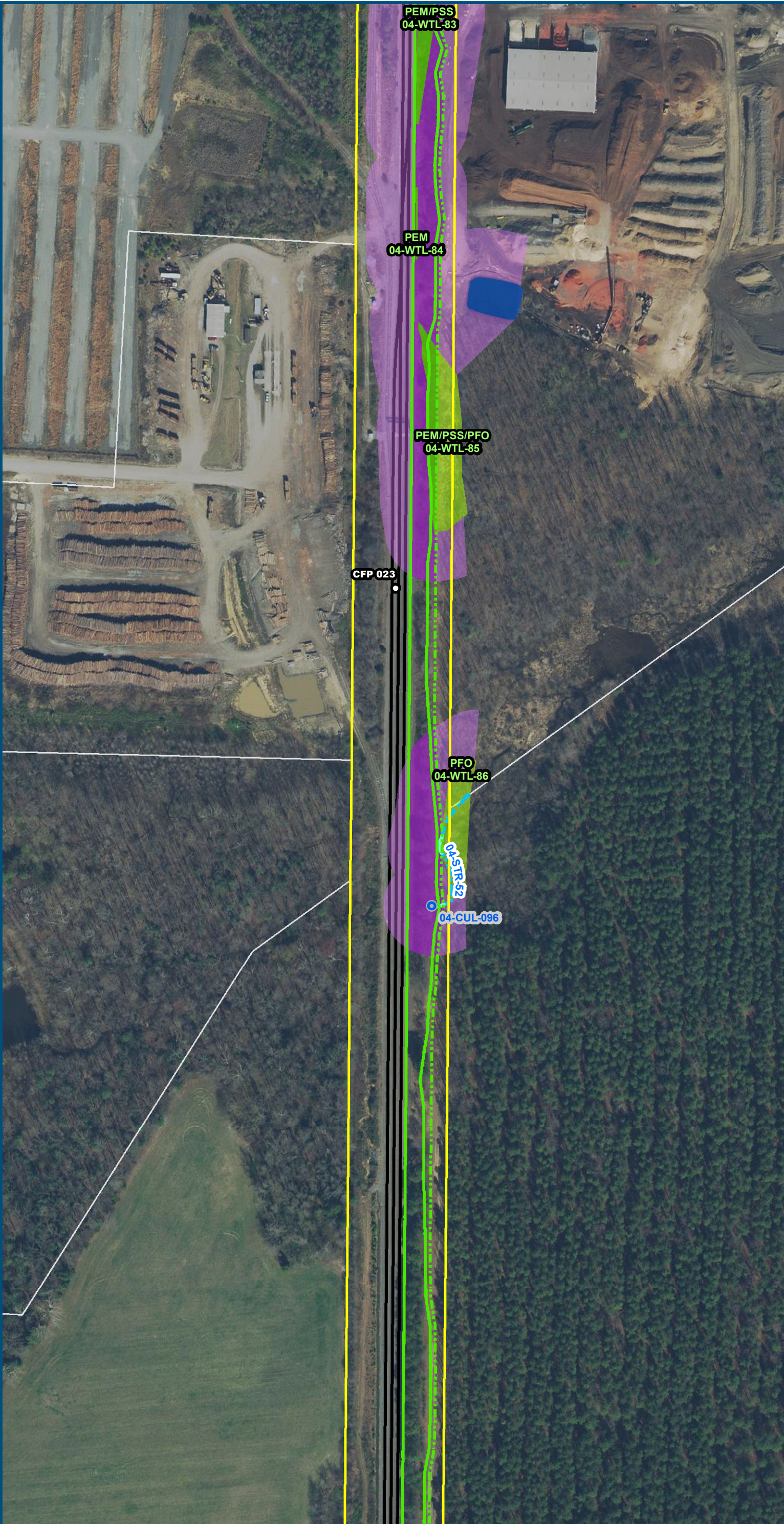


0 100 200
 Feet
 1 inch = 200 feet
 @ 11 x 17 inches
 Projection: Lambert Conformal Conic
 State Plane Virginia North FIPS 4501 Feet
 North American Datum of 1983
 Imagery/Basemap Source: 2015-2017 VGIN
 Aerial Imagery; ESRI World Transportation

- Legend**
- Permanent Limits of Disturbance
 - Temporary Limits of Disturbance
 - CSXT Mileposts
 - Track - Existing
 - Existing Stations
 - Culverts
 - Delineated Stream Impacts
 - Delineated Streams
 - Major River Impacts
 - Waterbodies
 - Delineated Wetlands
 - Delineated Wetland Impacts
 - Resource Protection Areas
 - Resource Protection Area Impacts
 - Impaired Waters *(Virginia Department of Environmental Quality)*
 - CSXT ROW (County Parcel Data)
 - City/County Parcels
 - City/County Boundary

Figure M-1
Preferred Alternative –
Potential Impacts to
Wetlands and Streams
Sheet 145 of 217

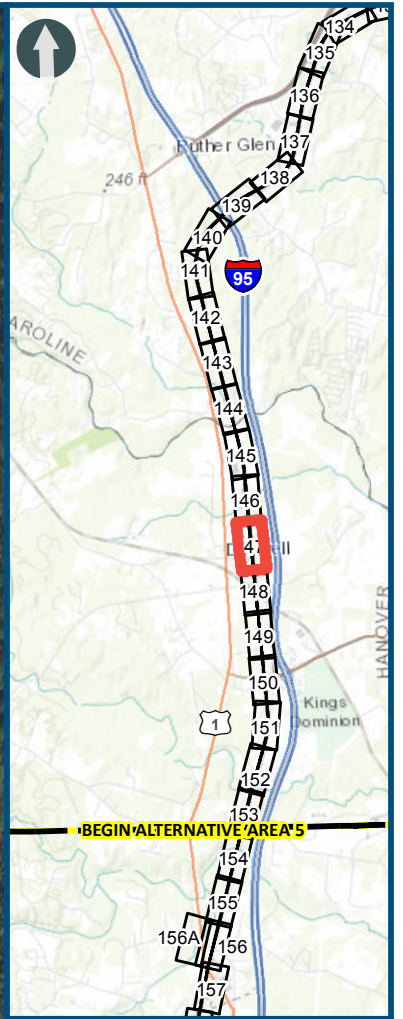
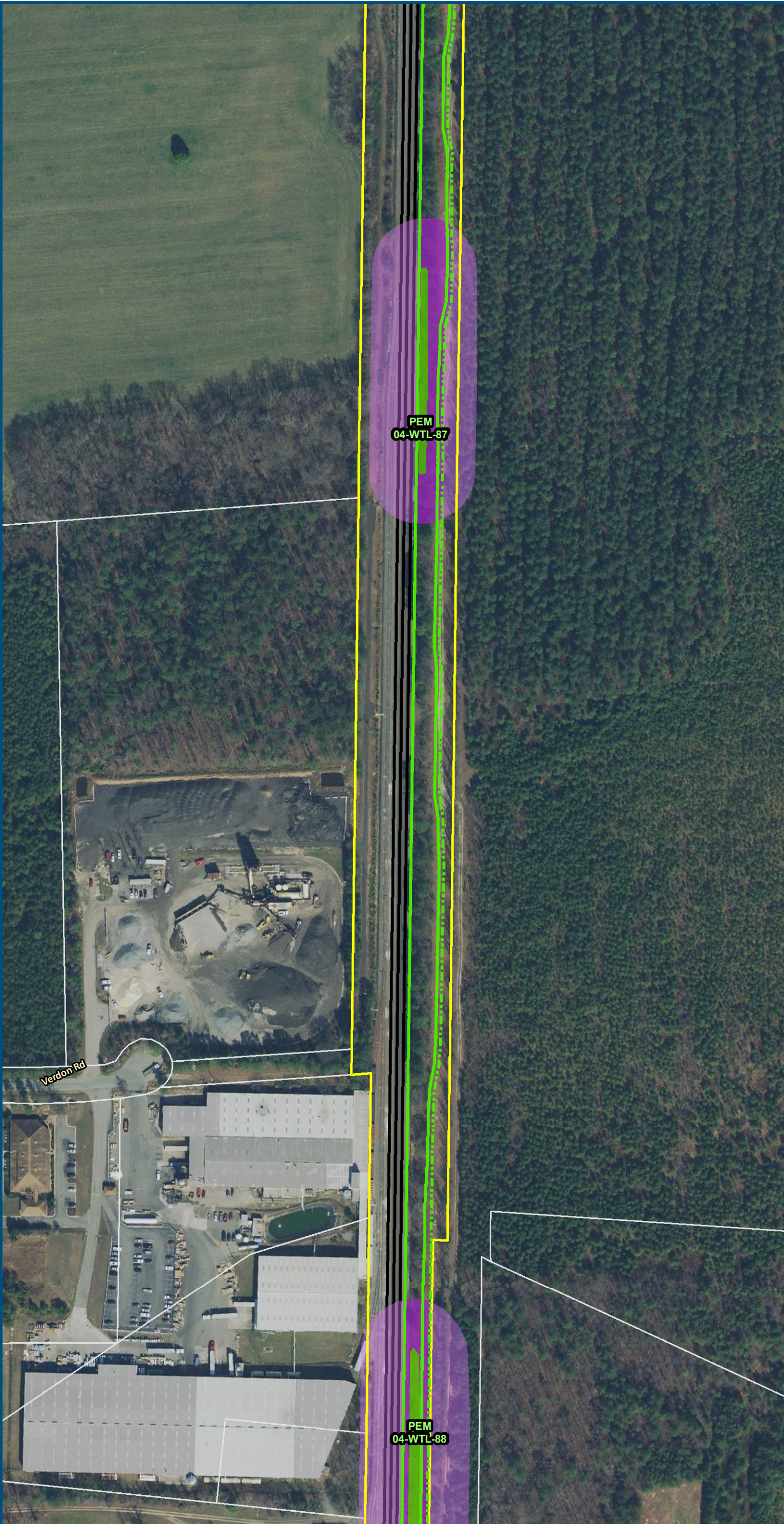
\\dlmain\GIS_DATA\GIS\Projects\011545_VA\DeptofRails-PublicTransportation\0239056_RAPS-4\AIDev-Concept\Eng\map_docs\mxd\FEIS\Map_M-1_WetlandsStreams_11x17.mxd | Last Updated: 12.06.2018



- Legend**
- Permanent Limits of Disturbance
 - Delimited Wetlands
 - Delimited Wetland Impacts
 - Resource Protection Areas
 - Resource Protection Area Impacts
 - Impaired Waters
 - CSXT ROW (County Parcel Data)
 - City/County Parcels
 - City/County Boundary
 - Track - Existing
 - Existing Stations
 - Culverts
 - Delimited Stream Impacts
 - Delimited Streams
 - Major River Impacts
 - Waterbodies
- (Virginia Department of Environmental Quality)*

Figure M-1
Preferred Alternative –
Potential Impacts to
Wetlands and Streams
Sheet 146 of 217

\\dlmain\GIS_DATA\GIS\Projects\011545_VA\DeptofRails-PublicTransportation\0239056_RAPS-4A\Dev-Concept\Eng\map_docs\mxd\FEIS\Map_M-1_WetlandsStreams_11x17.mxd | Last Updated: 12.06.2018

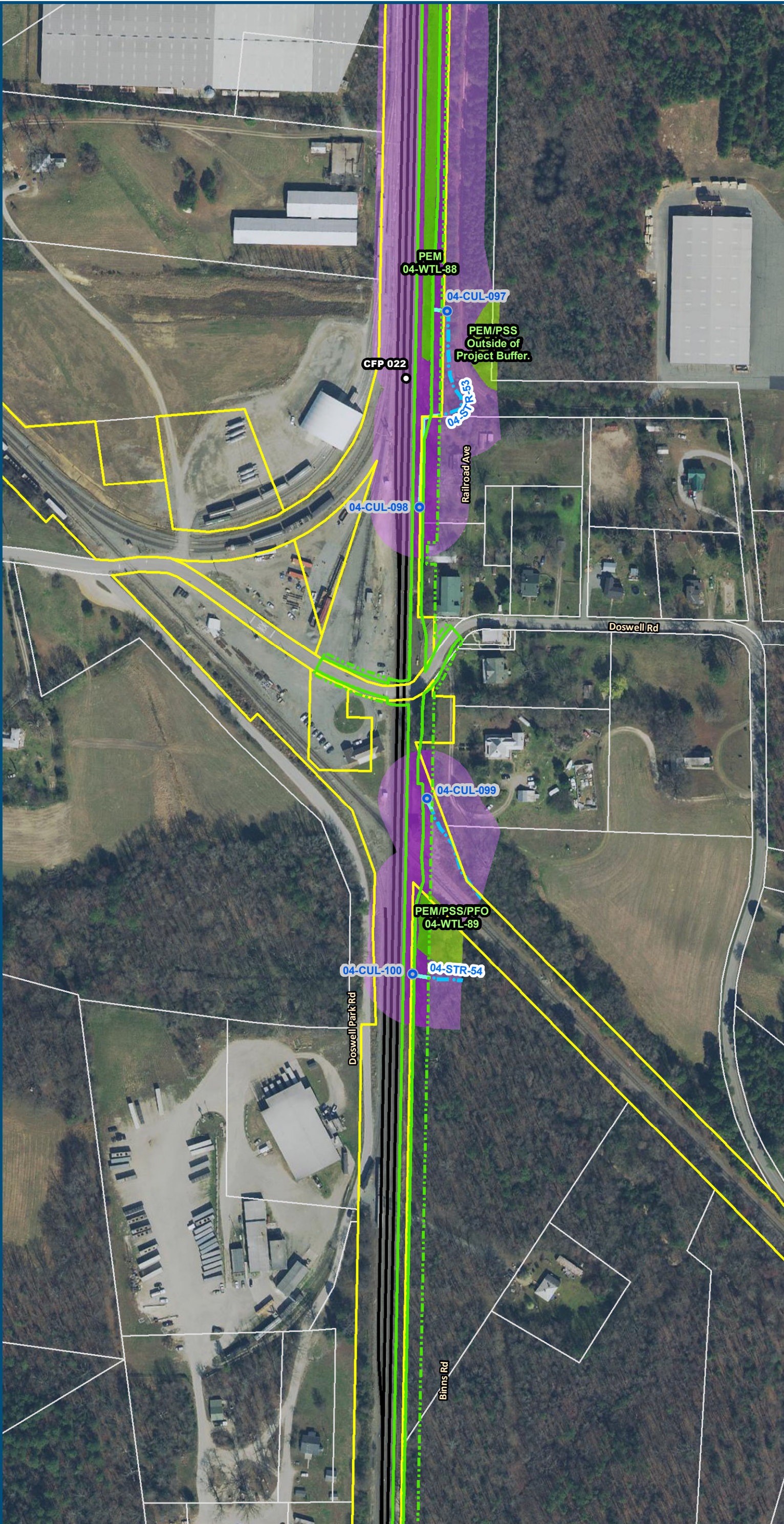


0 100 200
Feet
1 inch = 200 feet
@ 11 x 17 inches
Projection: Lambert Conformal Conic
State Plane Virginia North FIPS 4501 Feet
North American Datum of 1983
Imagery/Basemap Source: 2015-2017 VGIN
Aerial Imagery; ESRI World Transportation

- Legend**
- Permanent Limits of Disturbance
 - Temporary Limits of Disturbance
 - CSXT Mileposts
 - Track - Existing
 - Existing Stations
 - Culverts
 - Delineated Stream Impacts
 - Delineated Streams
 - Major River Impacts
 - Waterbodies
 - Delineated Wetlands
 - Delineated Wetland Impacts
 - Resource Protection Areas
 - Resource Protection Area Impacts
 - Impaired Waters *(Virginia Department of Environmental Quality)*
 - CSXT ROW (County Parcel Data)
 - City/County Parcels
 - City/County Boundary

Figure M-1
Preferred Alternative –
Potential Impacts to
Wetlands and Streams
Sheet 147 of 217

\\dlmain\GIS_DATA\GIS\Projects\011545_VA\DeptofRalls-PublicTransportation\0239056_RAPS-4\AIDev-ConceptEng\map_docs\mxd\FEIS\Map_11x17.mxd | Last Updated: 12.06.2018

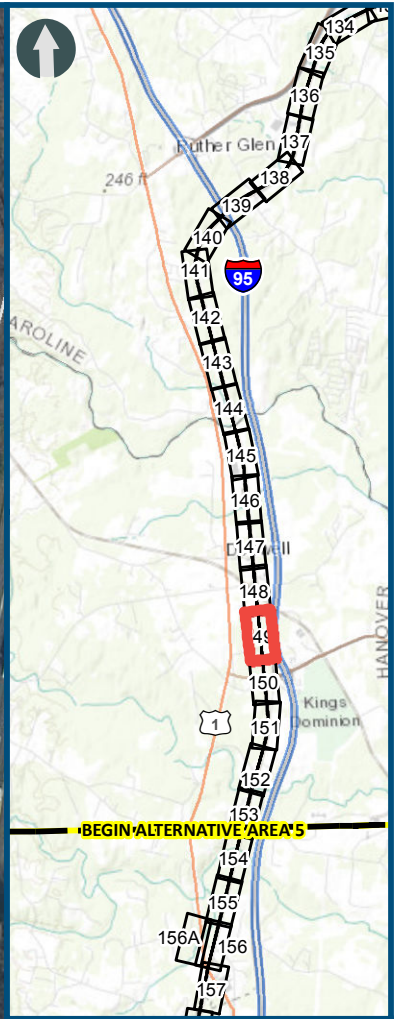
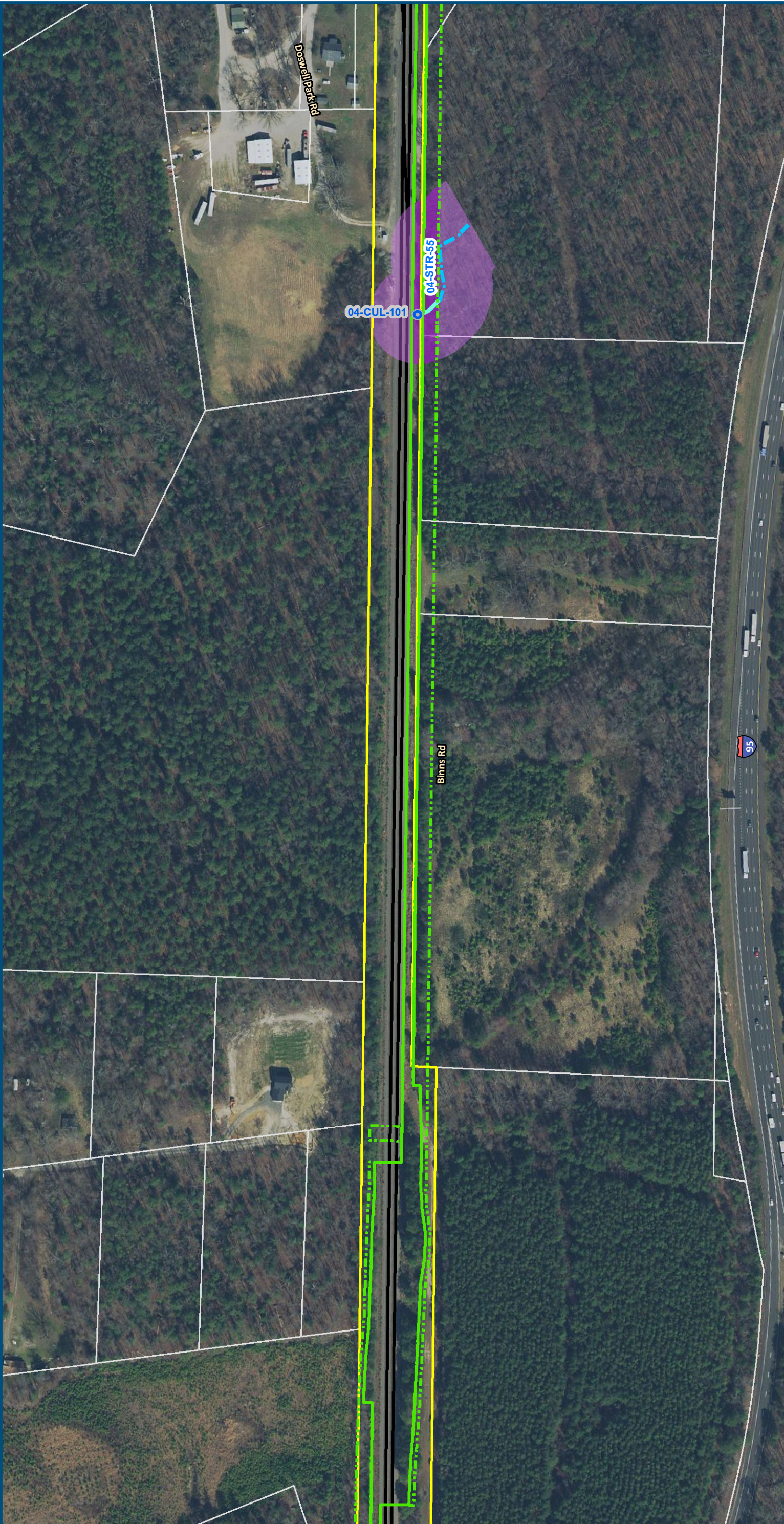


0 100 200
 Feet
 1 inch = 200 feet
 @ 11 x 17 inches
 Projection: Lambert Conformal Conic
 State Plane Virginia North FIPS 4501 Feet
 North American Datum of 1983
 Imagery/Basemap Source: 2015-2017 VGIN
 Aerial Imagery; ESRI World Transportation

- Legend**
- Permanent Limits of Disturbance
 - Temporary Limits of Disturbance
 - CSXT Mileposts
 - Track - Existing
 - Existing Stations
 - Culverts
 - Delineated Stream Impacts
 - Delineated Streams
 - Major River Impacts
 - Waterbodies
 - Delineated Wetlands
 - Delineated Wetland Impacts
 - Resource Protection Areas
 - Resource Protection Area Impacts
 - Impaired Waters (Virginia Department of Environmental Quality)
 - CSXT ROW (County Parcel Data)
 - City/County Parcels
 - City/County Boundary

Figure M-1
Preferred Alternative –
Potential Impacts to
Wetlands and Streams
 Sheet 148 of 217

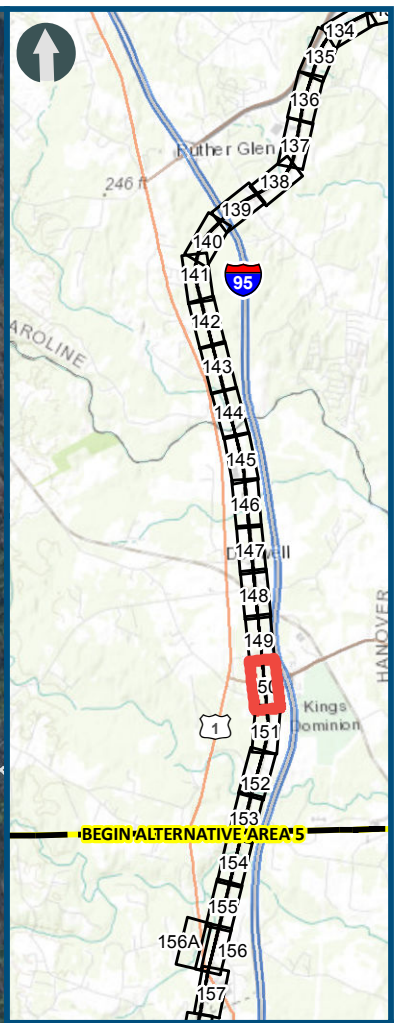
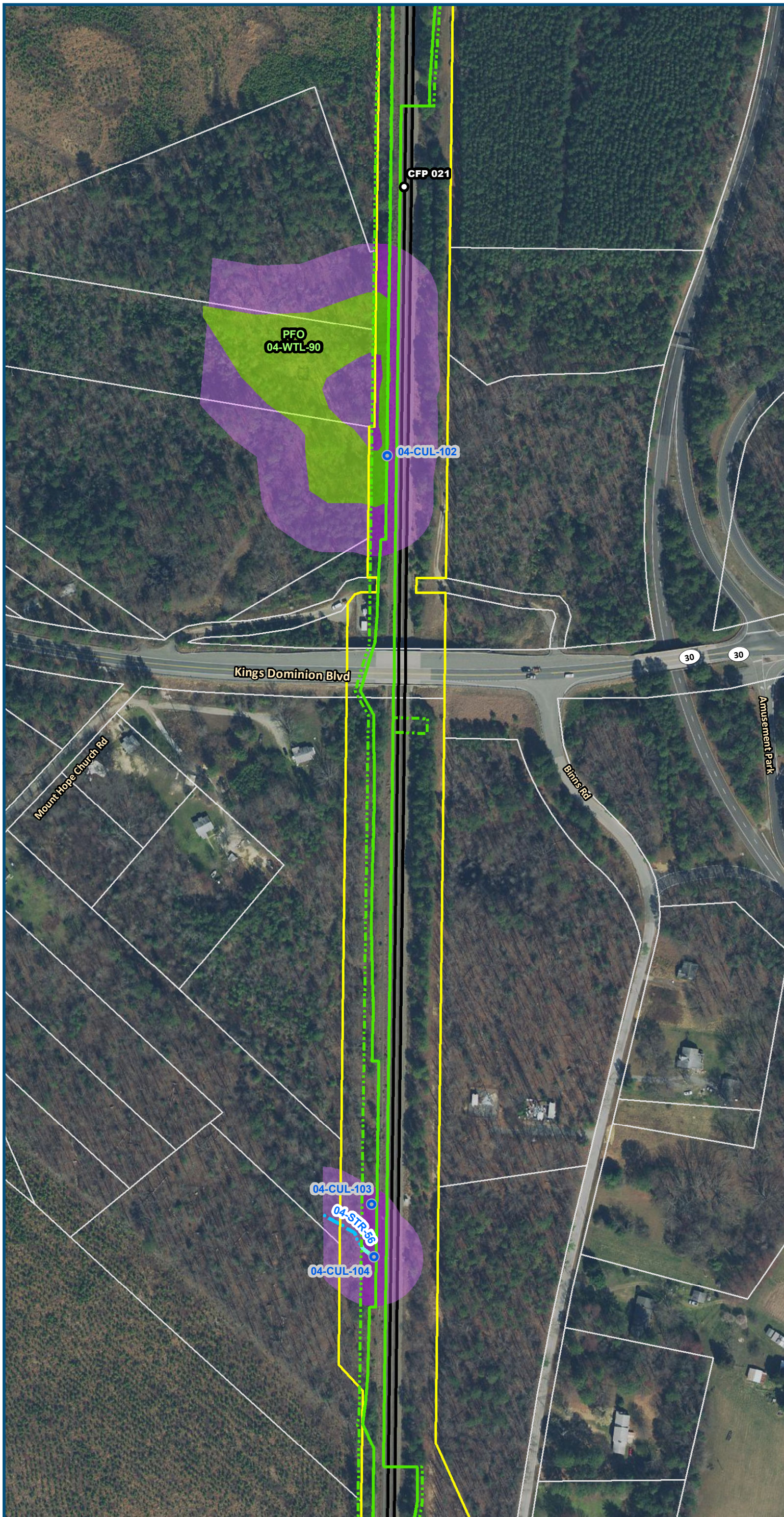
\\dlmain\GIS_DATA\GIS\Projects\011545_VA\DeptofRails-PublicTransportation\0239056_RAPS-4\AIDev-ConceptEng\map_docs\mxd\FEIS\Map_M-1_WetlandsStreams_11x17.mxd | Last Updated: 12.06.2018



0 100 200
Feet
1 inch = 200 feet
@ 11 x 17 inches
Projection: Lambert Conformal Conic
State Plane Virginia North FIPS 4501 Feet
North American Datum of 1983
Imagery/Basemap Source: 2015-2017 VGIN
Aerial Imagery; ESRI World Transportation

- Legend**
- Permanent Limits of Disturbance
 - Temporary Limits of Disturbance
 - CSXT Mileposts
 - Track - Existing
 - Existing Stations
 - Culverts
 - Delineated Stream Impacts
 - Delineated Streams
 - Major River Impacts
 - Waterbodies
 - Delineated Wetlands
 - Delineated Wetland Impacts
 - Resource Protection Areas
 - Resource Protection Area Impacts
 - Impaired Waters (Virginia Department of Environmental Quality)
 - CSXT ROW (County Parcel Data)
 - City/County Parcels
 - City/County Boundary

Figure M-1
Preferred Alternative –
Potential Impacts to
Wetlands and Streams
Sheet 149 of 217



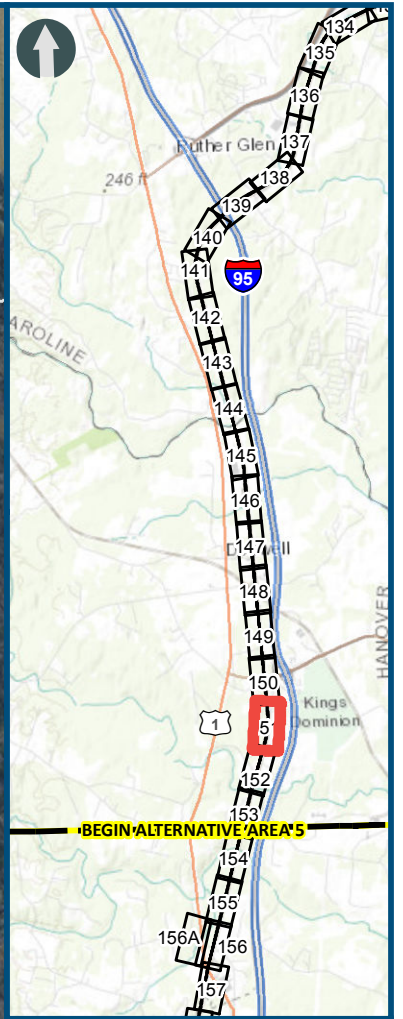
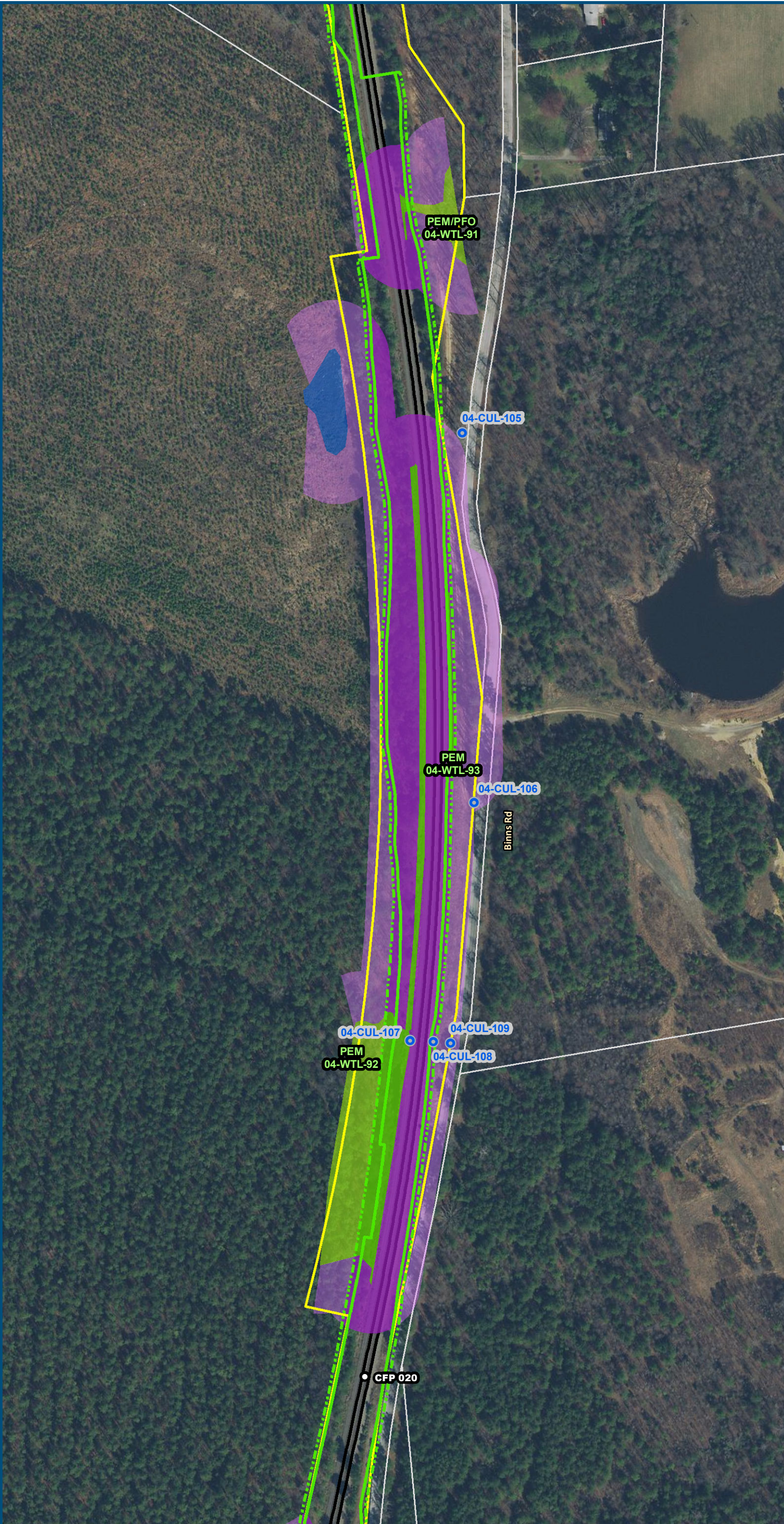
0 100 200
 Feet
 1 inch = 200 feet
 @ 11 x 17 inches
 Projection: Lambert Conformal Conic
 State Plane Virginia North FIPS 4501 Feet
 North American Datum of 1983
 Imagery/Basemap Source: 2015-2017 VGIN
 Aerial Imagery; ESRI World Transportation

- Legend**
- Permanent Limits of Disturbance
 - Temporary Limits of Disturbance
 - CSXT Mileposts
 - Track - Existing
 - Existing Stations
 - Culverts
 - Delineated Stream Impacts
 - Delineated Streams
 - Major River Impacts
 - Waterbodies
 - Delineated Wetlands
 - Delineated Wetland Impacts
 - Resource Protection Areas
 - Resource Protection Area Impacts
 - Impaired Waters (Virginia Department of Environmental Quality)
 - CSXT ROW (County Parcel Data)
 - City/County Parcels
 - City/County Boundary

Figure M-1
Preferred Alternative –
Potential Impacts to
Wetlands and Streams
Sheet 150 of 217

\\vlsmain\GIS_DATA\GIS\Projects\011545_VA\DeptofRails-PublicTransportation\0239056_RAPS-4\AIDev-Concept\Eng\map_docs\mxd\FEIS\Map_M-1_WetlandsStreams_11x17.mxd | Last Updated: 12.06.2018

\\dlmain\GIS_DATA\GIS\Projects\011545_VA\DeptofRails-PublicTransportation\0239056_RAPS-4\AIDev-ConceptEng\map_docs\mxd\FEIS\Map_11x17.mxd | Last Updated: 12.06.2018

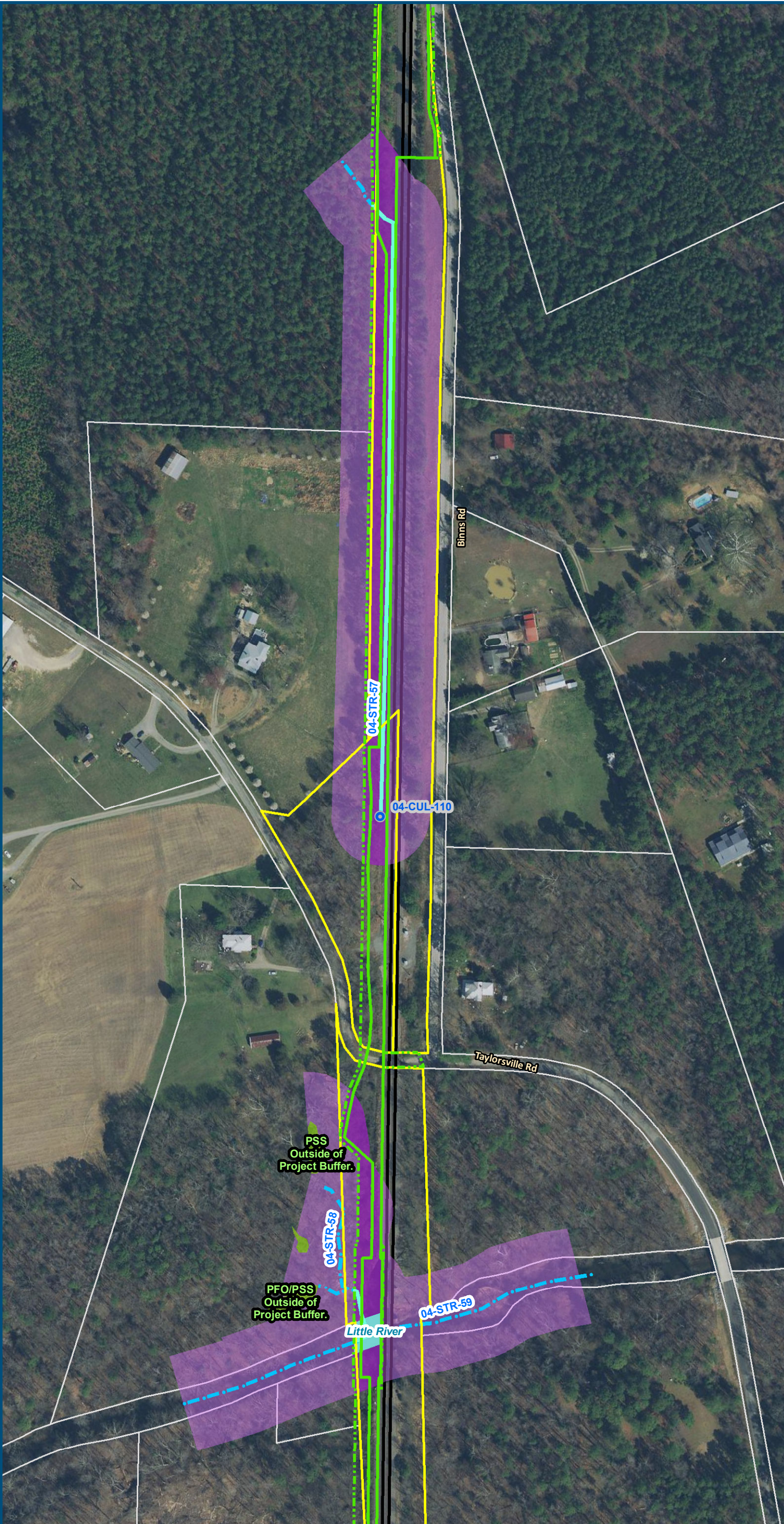


0 100 200
Feet
1 inch = 200 feet
@ 11 x 17 inches
Projection: Lambert Conformal Conic
State Plane Virginia North FIPS 4501 Feet
North American Datum of 1983
Imagery/Basemap Source: 2015-2017 VGIN
Aerial Imagery; ESRI World Transportation

- Legend**
- Permanent Limits of Disturbance
 - Temporary Limits of Disturbance
 - CSXT Mileposts
 - Track - Existing
 - Existing Stations
 - Culverts
 - Delineated Stream Impacts
 - Delineated Streams
 - Major River Impacts
 - Waterbodies
 - Delineated Wetlands
 - Delineated Wetland Impacts
 - Resource Protection Areas
 - Resource Protection Area Impacts
 - Impaired Waters (Virginia Department of Environmental Quality)
 - CSXT ROW (County Parcel Data)
 - City/County Parcels
 - City/County Boundary

Figure M-1
Preferred Alternative –
Potential Impacts to
Wetlands and Streams
Sheet 151 of 217

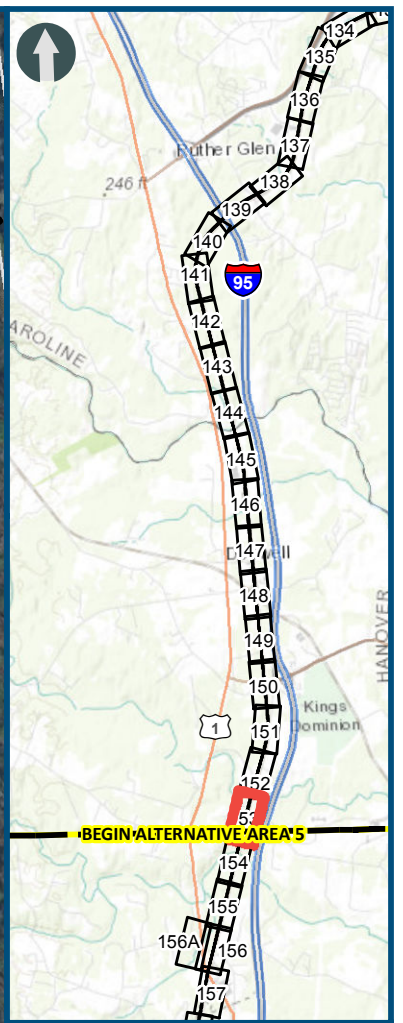
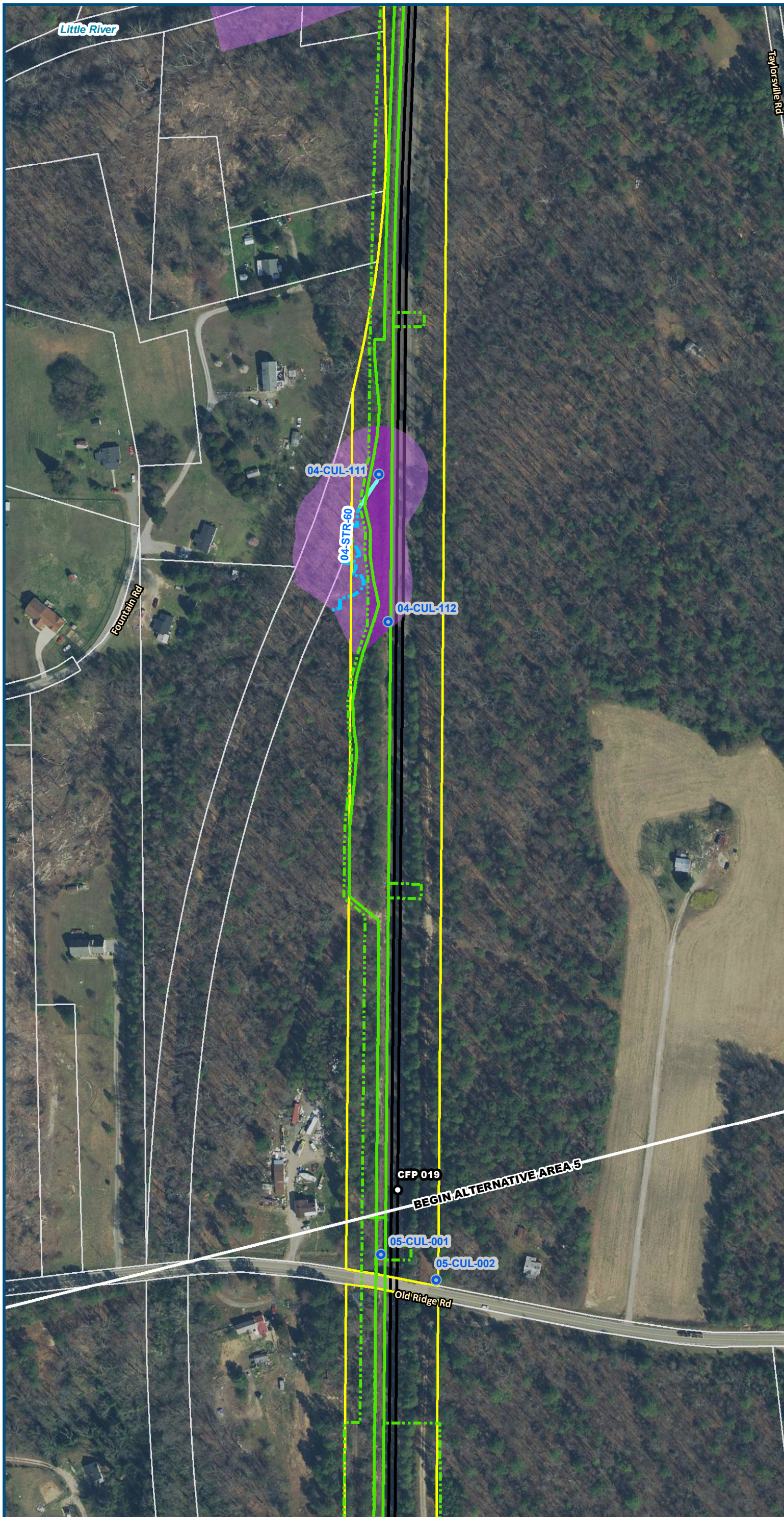
\\dlismain\GIS_DATA\GIS\Projects\011545_VA\DeptofRails-PublicTransportation\0239056_RAPS-4\AIDev-ConceptEng\map_docs\mxd\FEIS\Map_11x17.mxd | Last Updated: 12.06.2018



0 100 200
Feet
1 inch = 200 feet
@ 11 x 17 inches
Projection: Lambert Conformal Conic
State Plane Virginia North FIPS 4501 Feet
North American Datum of 1983
Imagery/Basemap Source: 2015-2017 VGIN
Aerial Imagery; ESRI World Transportation

- Legend**
- Permanent Limits of Disturbance
 - Temporary Limits of Disturbance
 - CSXT Mileposts
 - Track - Existing
 - Existing Stations
 - Culverts
 - Delineated Stream Impacts
 - Delineated Streams
 - Major River Impacts
 - Waterbodies
 - Delineated Wetlands
 - Delineated Wetland Impacts
 - Resource Protection Areas
 - Resource Protection Area Impacts
 - Impaired Waters *(Virginia Department of Environmental Quality)*
 - CSXT ROW (County Parcel Data)
 - City/County Parcels
 - City/County Boundary

Figure M-1
Preferred Alternative –
Potential Impacts to
Wetlands and Streams
Sheet 152 of 217



0 100 200
 Feet
 1 inch = 200 feet
 @ 11 x 17 inches
 Projection: Lambert Conformal Conic
 State Plane Virginia North FIPS 4501 Feet
 North American Datum of 1983
 Imagery/Basemap Source: 2015-2017 VGIN
 Aerial Imagery; ESRI World Transportation

- Legend**
- Permanent Limits of Disturbance
 - Temporary Limits of Disturbance
 - CSXT Mileposts
 - Track - Existing
 - Existing Stations
 - Culverts
 - Delineated Stream Impacts
 - Delineated Streams
 - Major River Impacts
 - Waterbodies
 - Delineated Wetlands
 - Delineated Wetland Impacts
 - Resource Protection Areas
 - Resource Protection Area Impacts
 - Impaired Waters (Virginia Department of Environmental Quality)
 - CSXT ROW (County Parcel Data)
 - City/County Parcels
 - City/County Boundary

Figure M-1
Preferred Alternative –
Potential Impacts to
Wetlands and Streams
 Sheet 153 of 217

\\dlmain\GIS_DATA\GIS\Projects\011545_VA Dept of Rail - Public Transportation\0239056_RAPS-4\AIDev-Concept\Eng\map_docs\mxd\FEIS\Map_M-1_WetlandsStreams_11x17.mxd | Last Updated: 12.06.2018