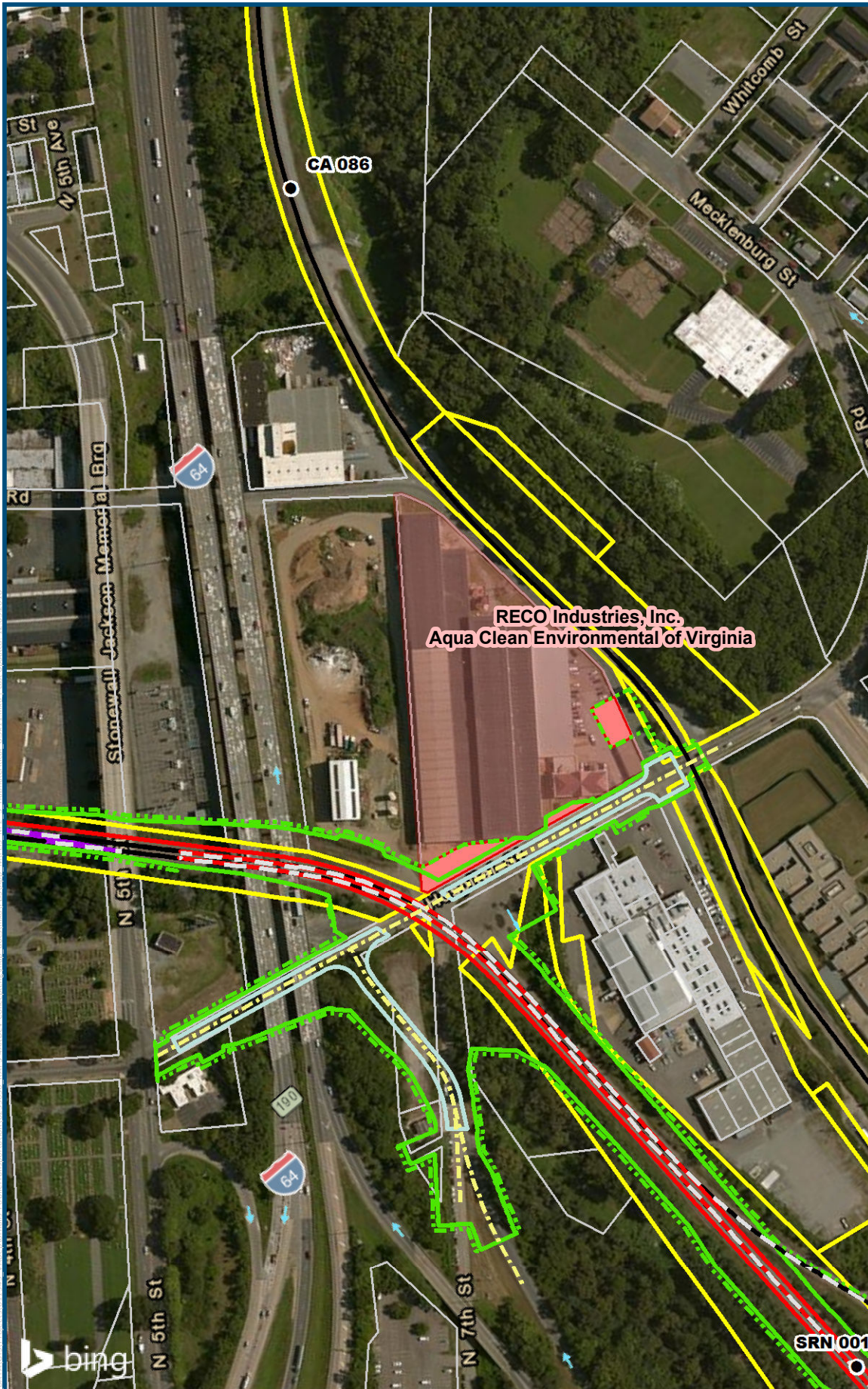


APPENDIX M2

PREFERRED ALTERNATIVE POTENTIAL IMPACTS TO HAZARDOUS MATERIAL SITES



D.C. TO RICHMOND SOUTHEAST HIGH SPEED RAIL



0 150 300
 Feet
 1 inch = 300 feet
 @ 8.5 x 11 inches
 Projection: Lambert Conformal Conic
 State Plane Virginia North FIPS 4501 Feet
 North American Datum of 1983
 Basemap: 2015 Bing Aerial Imagery,
 ESRI World Transportation.
 Data Source: VDOT CEDAR; ERIS, 2016.

- Legend**
- CSXT Mileposts
 - Existing Stations
 - Track - Existing
 - Track - Improve Existing
 - Track - Proposed
 - Track - Remove
 - Crossover - Proposed
 - Edge of Pavement
 - Roadway Centerline
 - SUPERFUND/
CERCLA/NPL
 - Known HAZMAT Release
 - SUPERFUND/CERCLA/
NPL Impact Area
 - Known HAZMAT Release
Impact Area
 - Permanent Limits of
Disturbance
 - Temporary Limits of
Disturbance
 - CSXT Right-of-Way
 - County/City Parcel
Boundaries
 - County/City Boundaries

Figure M-2
Preferred Alternative –
Potential Impacts to
Critical Hazardous
Materials Sites
Sheet 3 of 3