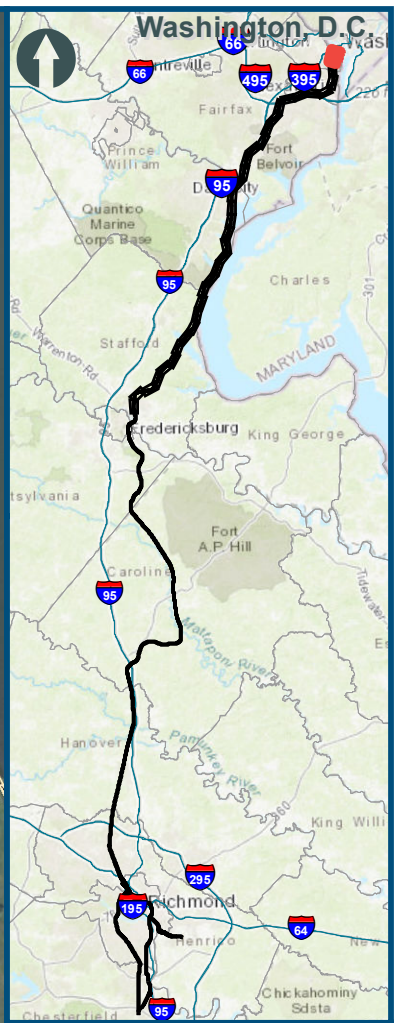
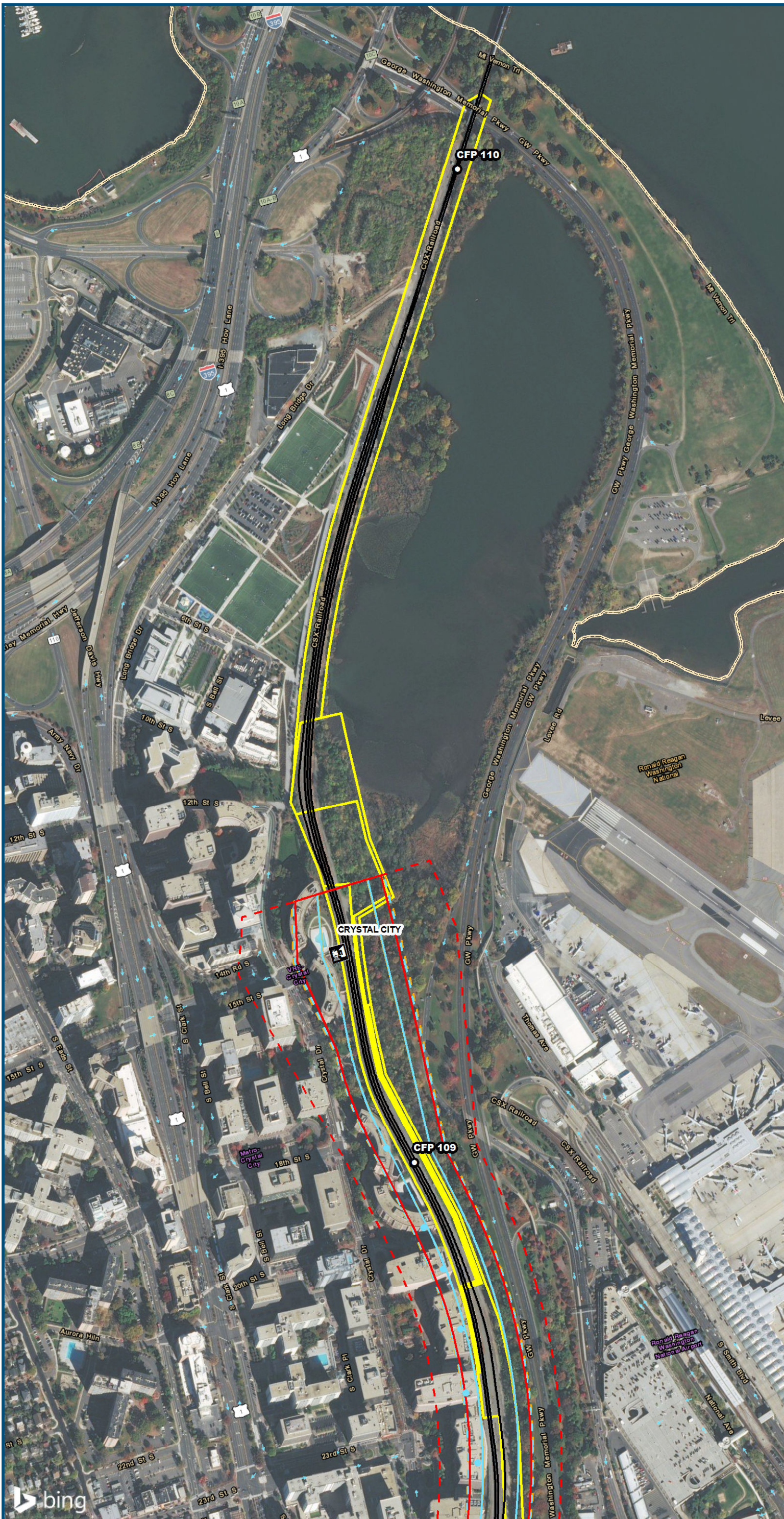


APPENDIX M3

UPDATES TO DRAFT EIS NOISE ANALYSIS MAPBOOK



D.C. TO RICHMOND SOUTHEAST HIGH SPEED RAIL

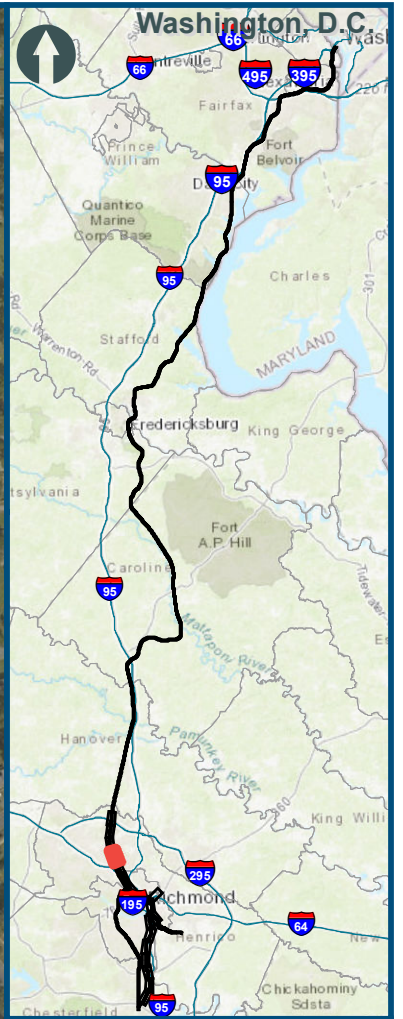
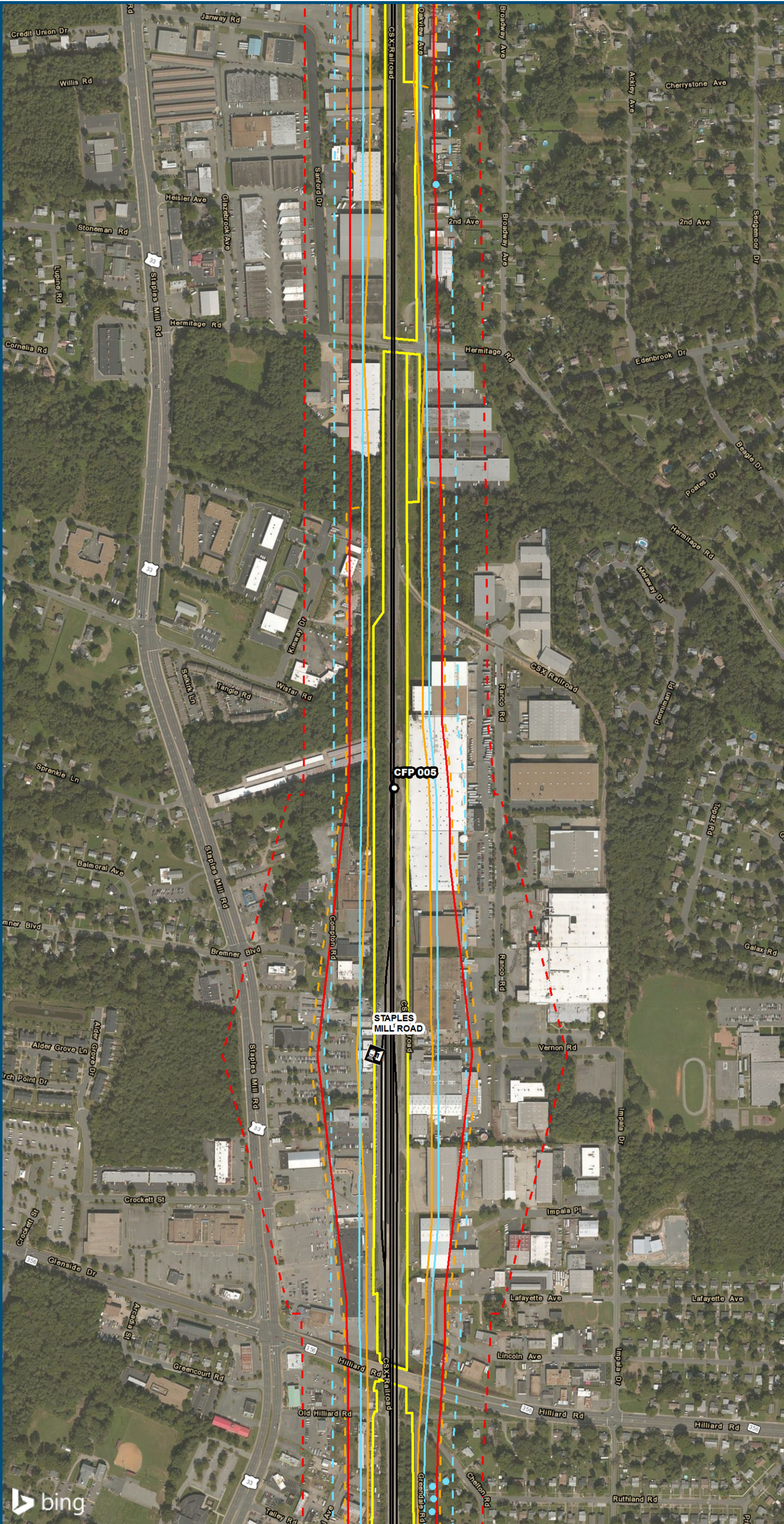


0 250 500
 Feet
 1 inch = 500 feet
 @ 11 x 17 inches
 Projection: Lambert Conformal Conic
 State Plane Virginia North FIPS 4501 Feet
 North American Datum of 1983
 Imagery/Basemap Source: 2015 Bing
 Aerial Imagery; ESRI World Transportation

- Legend**
- - - Category 1 Moderate Noise Impact Contour
 - Category 1 Severe Noise Impact Contour
 - Category 1 Moderate Noise Impacts
 - Category 1 Severe Noise Impacts
 - - - Category 2 Moderate Noise Impact Contour
 - Category 2 Severe Noise Impact Contour
 - Category 2 Moderate Noise Impacts
 - Category 2 Severe Noise Impacts
 - - - Category 3 Moderate Noise Impact Contour
 - Category 3 Severe Noise Impact Contour
 - Category 3 Moderate Noise Impacts
 - Category 3 Severe Noise Impacts
 - CSXT Mileposts
 - Track - Existing
 - Stations
 - Proposed Stations
 - CSXT ROW (County Parcel Data)
 - City/County Boundary

Figure M-3
Updates to Draft EIS
Noise Analysis Mapbook
Area 2:
Northern Virginia
Sheet 1 of 35

\\dlmain\GIS_DATA\GIS\Projects\011545_VA\DeptofRails-PublicTransportation\0239056_RAPS-4AIDev-ConceptEng\map_docs\mxd\FEISApp_MFEIS_M-3_NoiseVib_Area2_Mapbook_11x17.mxd | Last Updated: 12.03.2018



0 250 500
 Feet
 1 inch = 500 feet
 @ 11 x 17 inches
 Projection: Lambert Conformal Conic
 State Plane Virginia North FIPS 4501 Feet
 North American Datum of 1983
 Imagery/Basemap Source: 2015 Bing
 Aerial Imagery; ESRI World Transportation

- Legend**
- - - Category 1 Moderate Noise Impact Contour
 - Category 1 Severe Noise Impact Contour
 - Category 1 Moderate Noise Impacts
 - Category 1 Severe Noise Impacts
 - - - Category 2 Moderate Noise Impact Contour
 - Category 2 Severe Noise Impact Contour
 - Category 2 Moderate Noise Impacts
 - Category 2 Severe Noise Impacts
 - - - Category 3 Moderate Noise Impact Contour
 - Category 3 Severe Noise Impact Contour
 - Category 3 Moderate Noise Impacts
 - Category 3 Severe Noise Impacts
 - CSXT Mileposts
 - Track - Existing
 - Stations
 - Proposed Stations
 - CSXT ROW (County Parcel Data)
 - City/County Boundary

Figure M-3
Updates to Draft EIS
Noise Analysis Mapbook
Area 6F:
Main Street and
Staples Mill Road
Full Service
Sheet 4 of 18

\\dlmain\GIS_DATA\GIS\Projects\011545_VA\DeptofRails-PublicTransportation\0239056_RAPS-4AIDev-ConceptEng\map_docs\mxd\FEISApp_MFEIS_M-3_NoiseVib_Area6F_Mapbook_11x17.mxd | Last Updated: 12.05.2018