

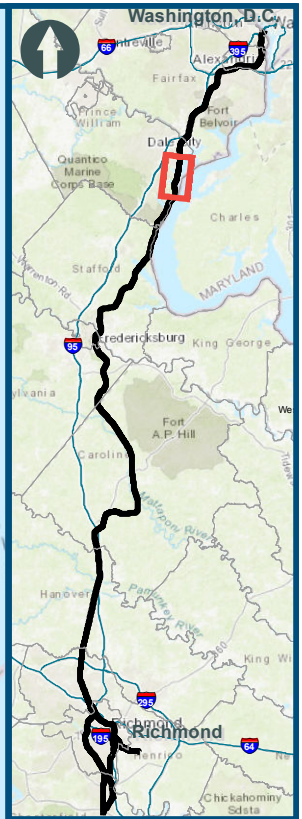
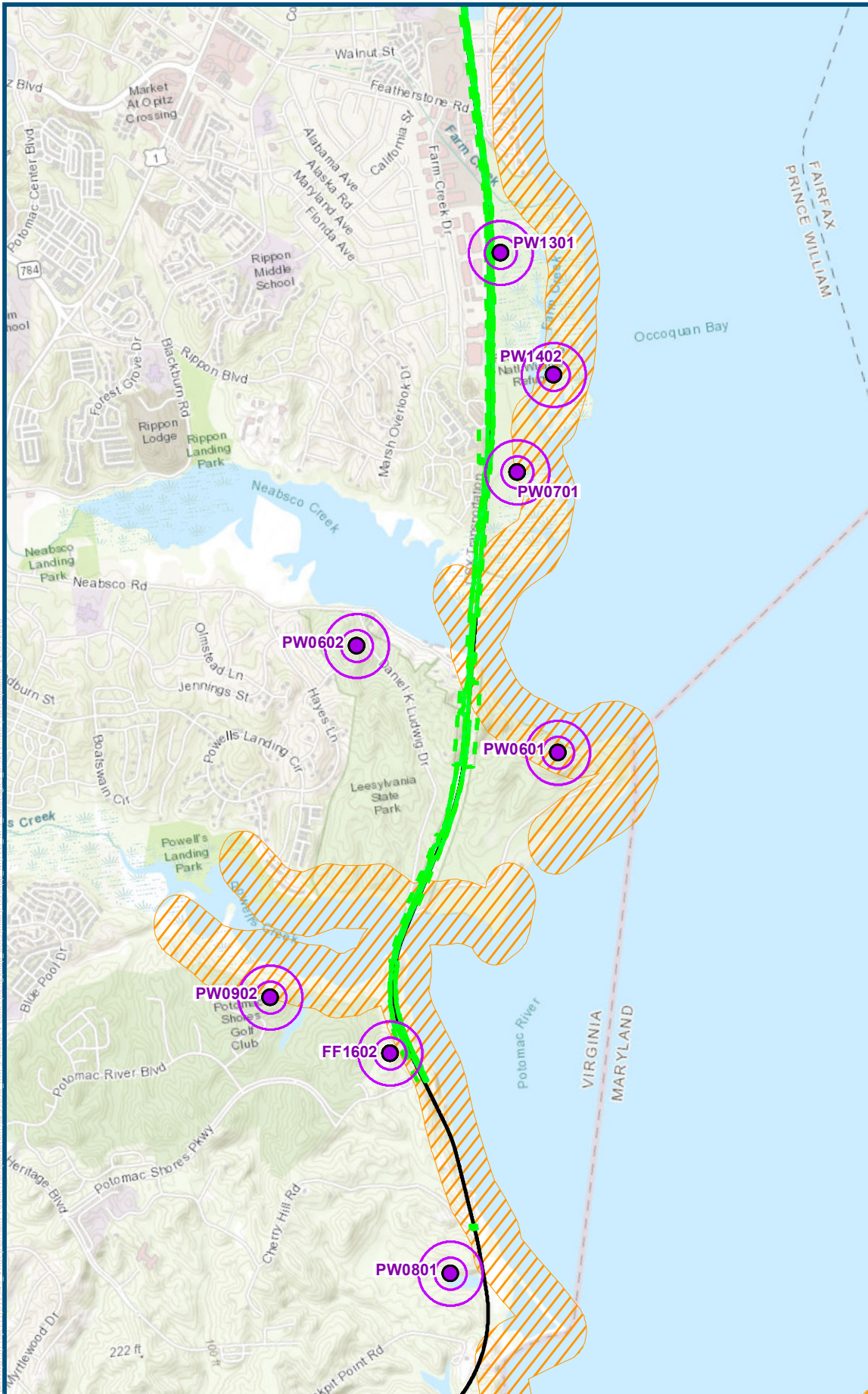
APPENDIX M5

PREFERRED ALTERNATIVE

POTENTIAL IMPACTS TO BALD EAGLE NESTS



D.C. TO RICHMOND SOUTHEAST HIGH SPEED RAIL



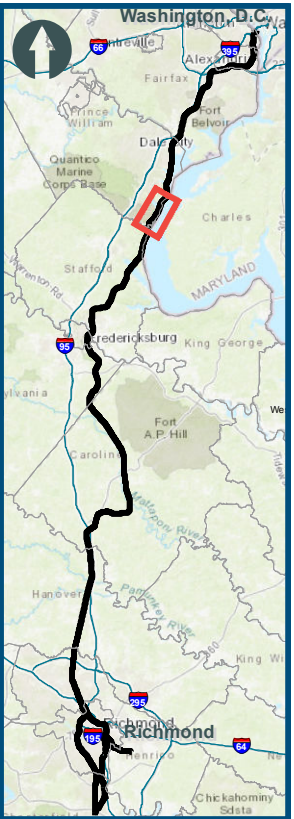
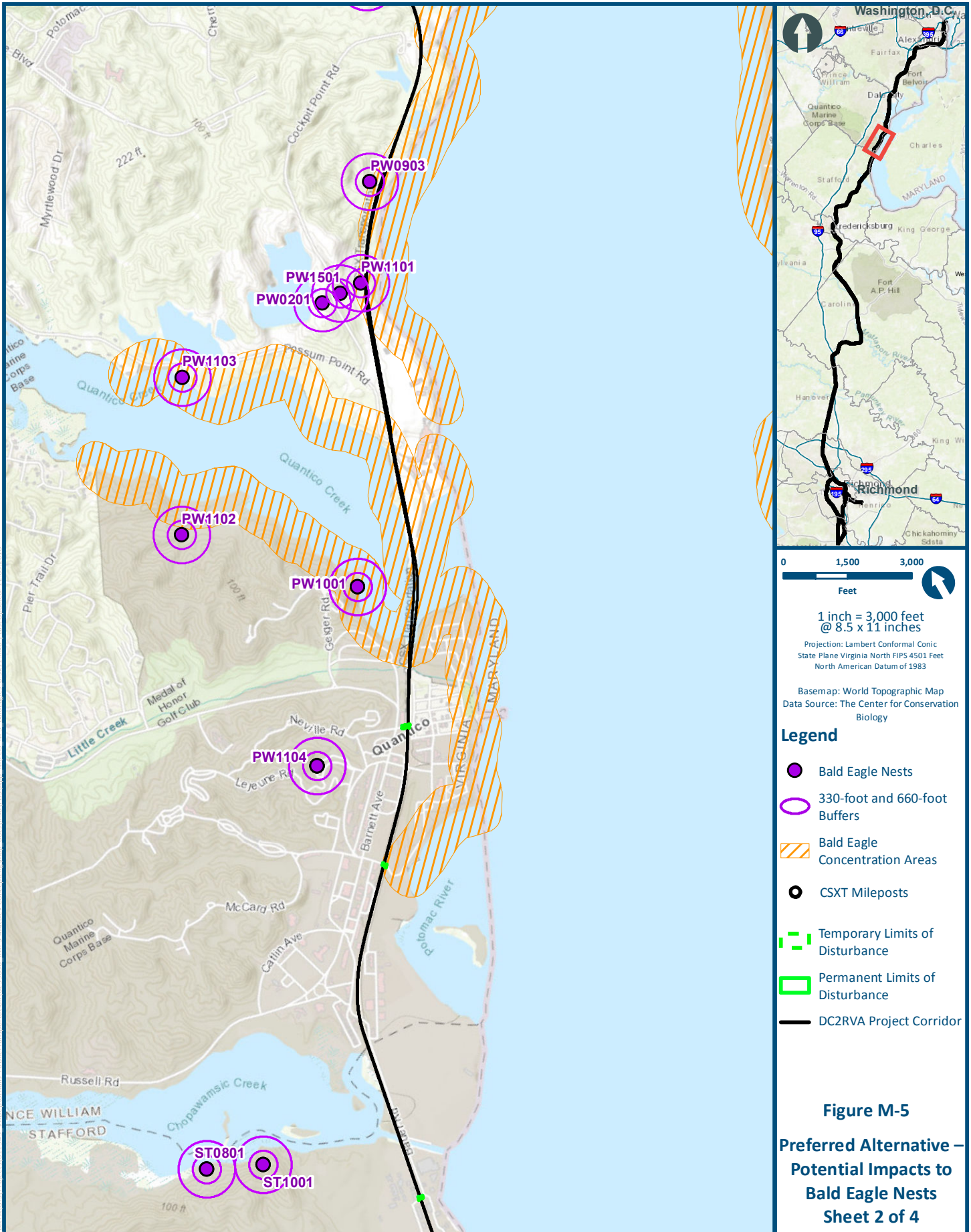
1 inch = 3,000 feet
@ 8.5 x 11 inches

Projection: Lambert Conformal Conic
State Plane Virginia North FIPS 4501 Feet
North American Datum of 1983

Basemap: World Topographic Map
Data Source: The Center for Conservation
Biology

- Legend**
- Bald Eagle Nests
 - 330-foot and 660-foot Buffers
 - Bald Eagle Concentration Areas
 - CSXT Mileposts
 - Temporary Limits of Disturbance
 - Permanent Limits of Disturbance
 - DC2RVA Project Corridor

Figure M-5
Preferred Alternative –
Potential Impacts to
Bald Eagle Nests
Sheet 1 of 4

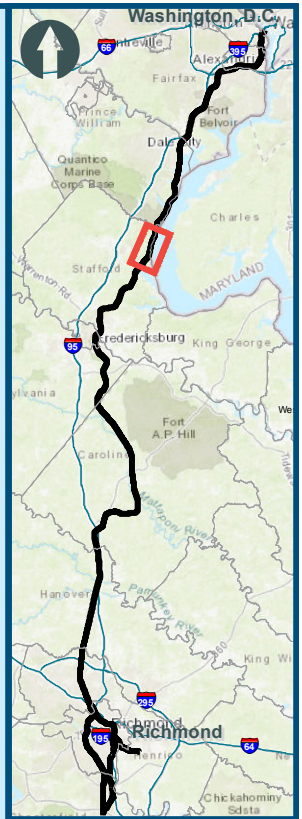
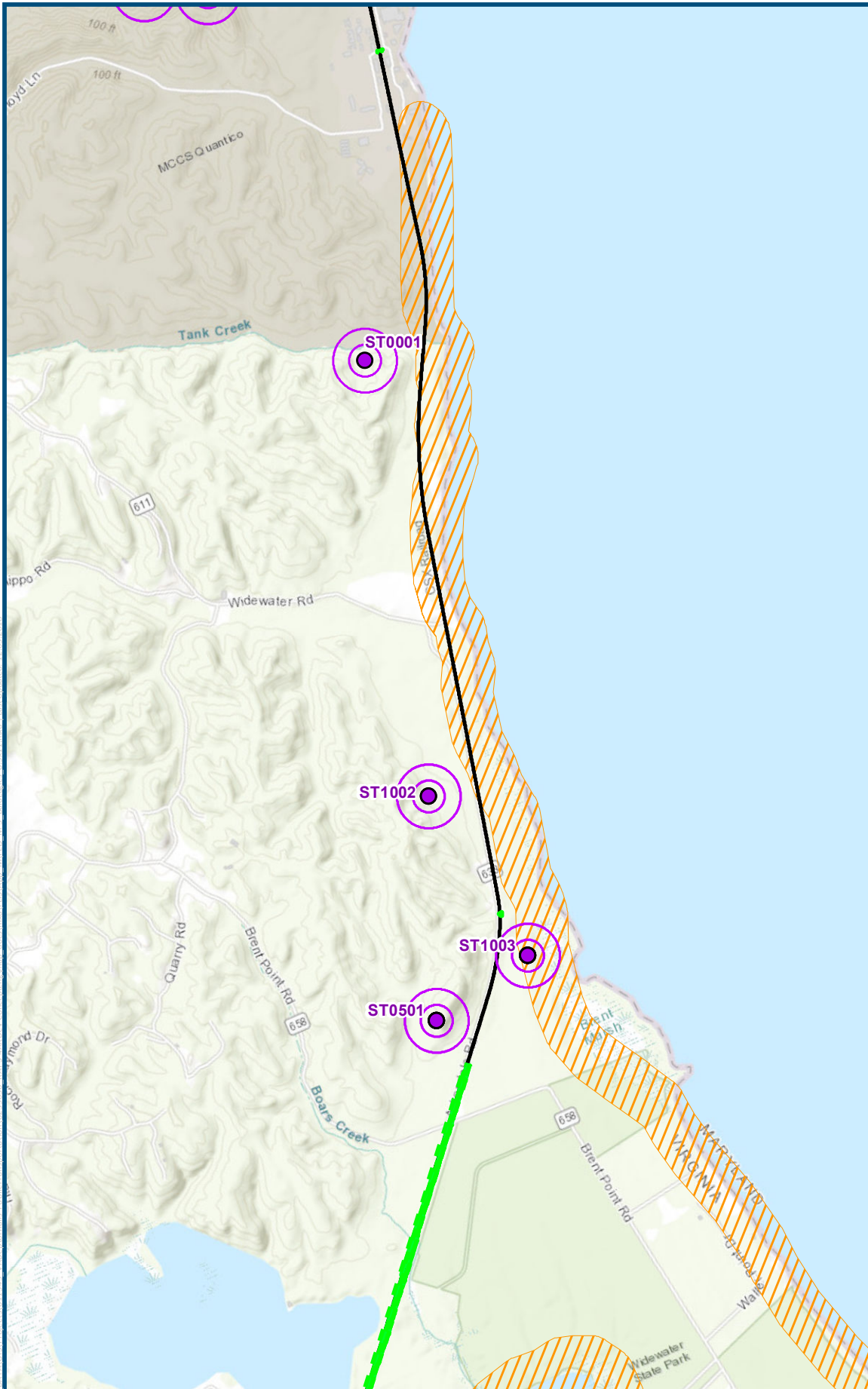


1 inch = 3,000 feet
@ 8.5 x 11 inches
Projection: Lambert Conformal Conic
State Plane Virginia North FIPS 4501 Feet
North American Datum of 1983

Basemap: World Topographic Map
Data Source: The Center for Conservation
Biology

- Legend**
- Bald Eagle Nests
 - 330-foot and 660-foot Buffers
 - Bald Eagle Concentration Areas
 - CSXT Mileposts
 - Temporary Limits of Disturbance
 - Permanent Limits of Disturbance
 - DC2RVA Project Corridor

Figure M-5
Preferred Alternative –
Potential Impacts to
Bald Eagle Nests
Sheet 2 of 4



1 inch = 3,000 feet
@ 8.5 x 11 inches

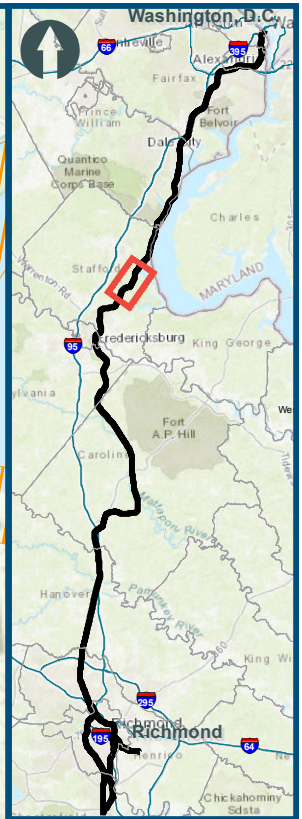
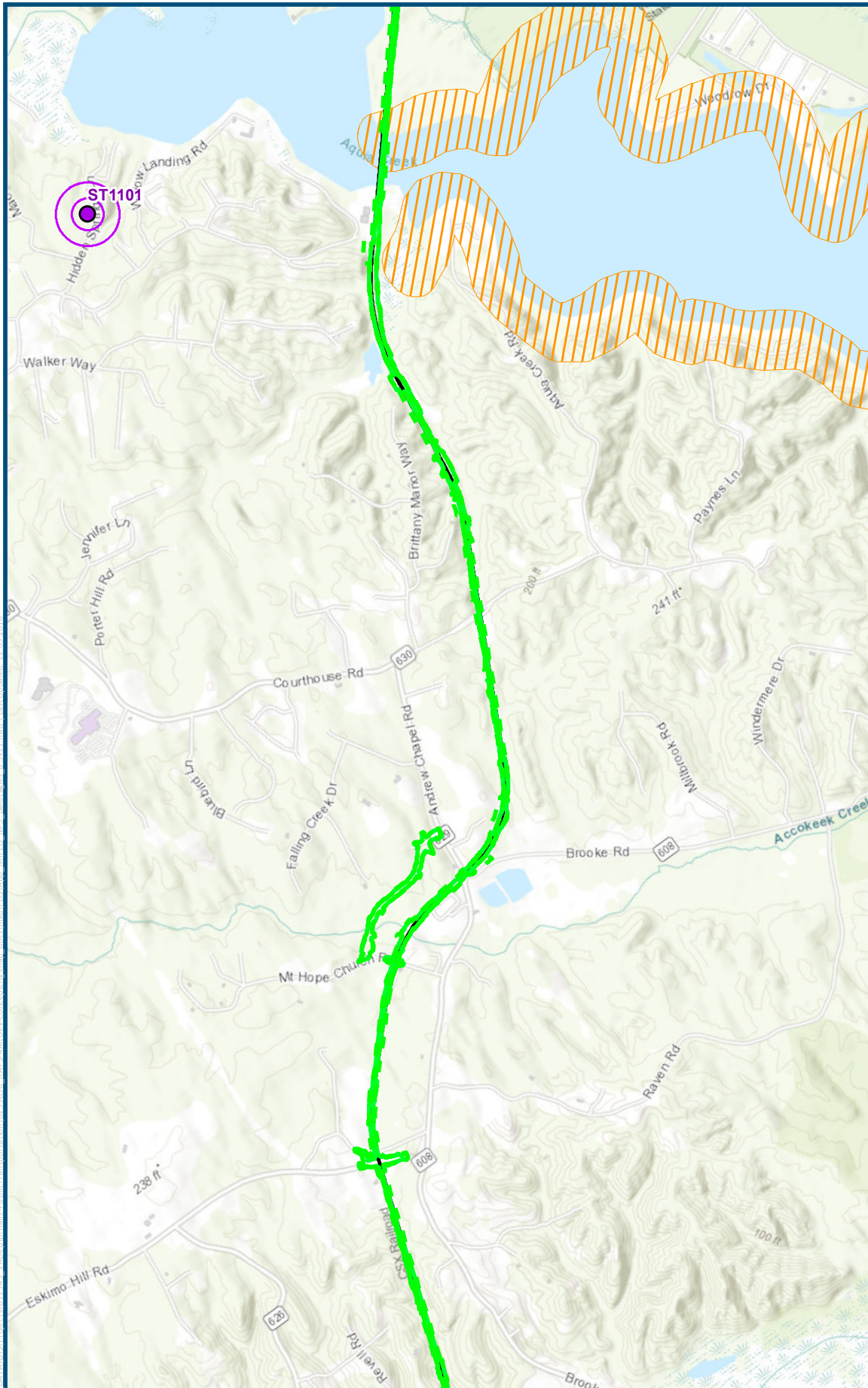
Projection: Lambert Conformal Conic
State Plane Virginia North FIPS 4501 Feet
North American Datum of 1983

Basemap: World Topographic Map
Data Source: The Center for Conservation Biology

- Legend**
- Bald Eagle Nests
 - 330-foot and 660-foot Buffers
 - Bald Eagle Concentration Areas
 - CSXT Mileposts
 - Temporary Limits of Disturbance
 - Permanent Limits of Disturbance
 - DC2RVA Project Corridor

Figure M-5
Preferred Alternative –
Potential Impacts to
Bald Eagle Nests
Sheet 3 of 4

M:\Information Systems\GIS\Projects\DC2RVA\Map_Series\DC2RVA_Potential_Impacts_to_Bald_Eagle_Nests_Series\DC2RVA_Potential_Impacts_to_Bald_Eagle_Nests_Series_17_05_2018.aprx



0 1,500 3,000
Feet

1 inch = 3,000 feet
@ 8.5 x 11 inches

Projection: Lambert Conformal Conic
State Plane Virginia North FIPS 4501 Feet
North American Datum of 1983

Basemap: World Topographic Map
Data Source: The Center for Conservation
Biology

Legend

- Bald Eagle Nests
- 330-foot and 660-foot Buffers
- Bald Eagle Concentration Areas
- CSXT Mileposts
- Temporary Limits of Disturbance
- Permanent Limits of Disturbance
- DC2RVA Project Corridor

Figure M-5
Preferred Alternative –
Potential Impacts to
Bald Eagle Nests
Sheet 4 of 4

M:\Information Systems\GIS\Projects\10111455_VAD\Info\BaldEagle\PublicTransportation\10111455_BaldEagle\GIS\DC2RVArail\Map_VADER.dwg, 8/5/11, Local Update: 12/25/2014